



DUAL INDUCTION LOG

Company **BLUERIDGE PETROLEUM CORPORATION**
 Well **BACON #1-16**
 Field **WILDCAT**
 County **MORRIS** State **KANSAS**

Location: **API # : 15-127-20603-0000**
423' FNL & 1194' FWL
SE NENWNW
 Permanent Datum **GROUND LEVEL** Elevation **1396**
 Log Measured From **KELLY BUSHING 12' A.G.L**
 Drilling Measured From **KELLY BUSHING**

Other Services
 CDL/CNL/PE
 MEL/SON
 Elevation
 K.B. 1408
 D.F. 1406
 G.L. 1396

| | |
|------------------------------|-------------------|
| Date | 10/1/21 |
| Run Number | ONE |
| Depth Driller | 3330 |
| Depth Logger | 3331 |
| Bottom Logged Interval | 3329 |
| Top Log Interval | 00 |
| Casing Driller | 8 5/8" @ 244 |
| Casing Logger | 244 |
| Bit Size | 7 7/8 |
| Type Fluid in Hole | CHEMICAL MUD |
| Density / Viscosity | 9.0/48 |
| pH / Fluid Loss | 10.5/9.9 |
| Source of Sample | FLOWLINE |
| Rm @ Meas. Temp | 1.20 @ 72F |
| Rmf @ Meas. Temp | 0.90 @ 72F |
| Rmc @ Meas. Temp | 1.44 @ 72F |
| Source of Rmf / Rmc | MEASUREMENT |
| Rm @ BHT | 0.78 @ 110F |
| Time Circulation Stopped | 2 HOURS |
| Time Logger on Bottom | //// |
| Maximum Recorded Temperature | 110F |
| Equipment Number | 3802 |
| Location | HAYS, KANSAS |
| Recorded By | JASON CAPPELLUCCI |
| Witnessed By | JIM MUSGROVE |

<<< Fold Here >>>

All interpretations are opinions based on inferences from electrical or other measurements and we cannot and do not guarantee the accuracy or correctness of any interpretation, and we shall not, except in the case of gross or willful negligence on our part, be liable or responsible for any loss, costs, damages, or expenses incurred or sustained by anyone resulting from any interpretation made by any of our officers, agents or employees. These interpretations are also subject to our general terms and conditions set out in our current Price Schedule.

Comments

THANK YOU FOR USING ELI WIRELINE SERVICES, HAYS, KS. (785) 628-6395
 DIRECTIONS
 COUNCIL GROVE, KS. - 6 NORTH ON HWY 177 TO RD. K - 1 3/4 WEST - SOUTH INTO

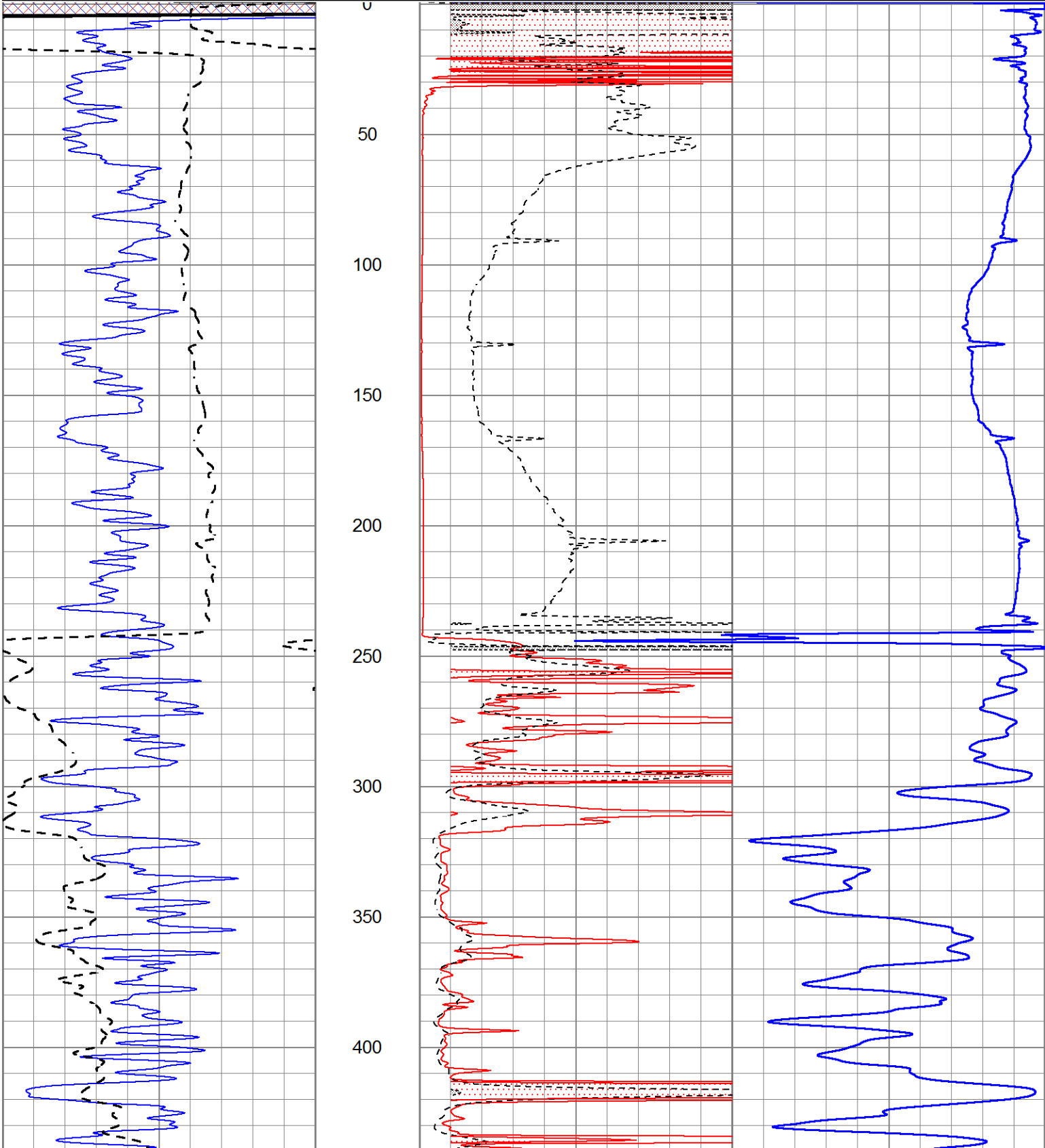


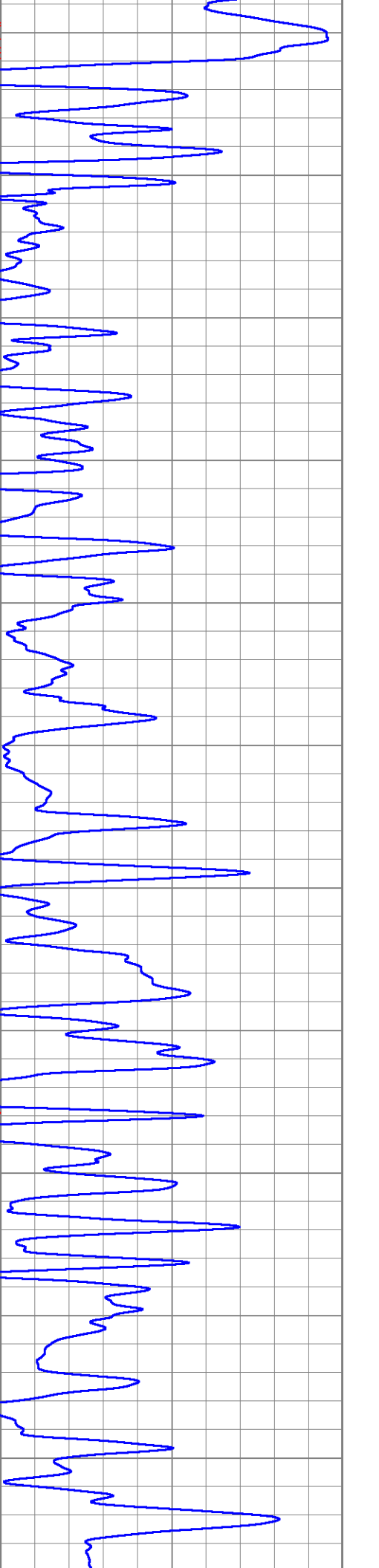
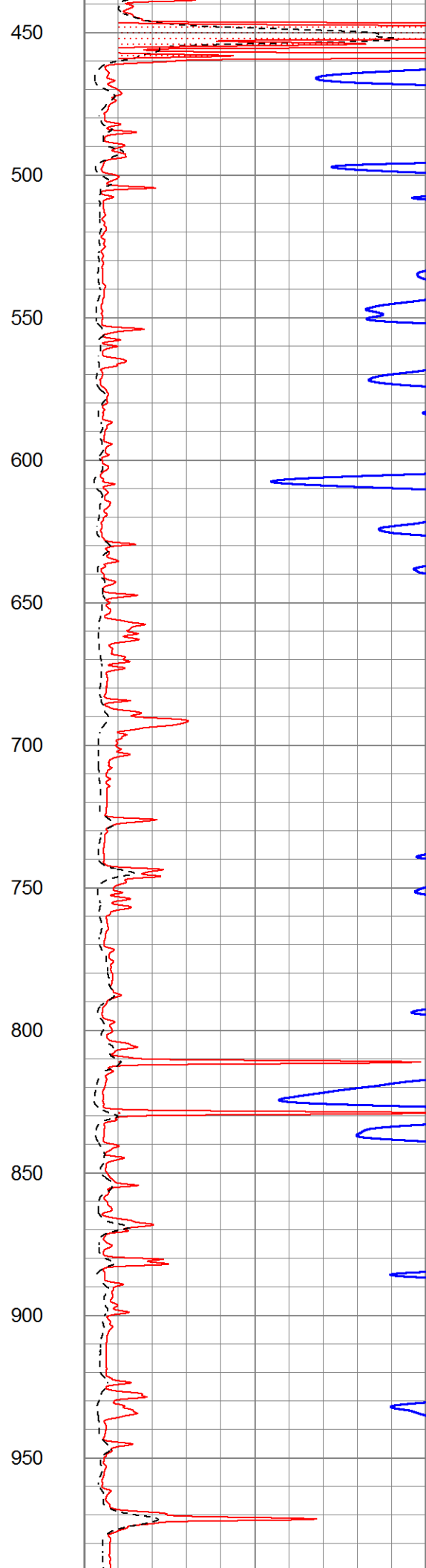
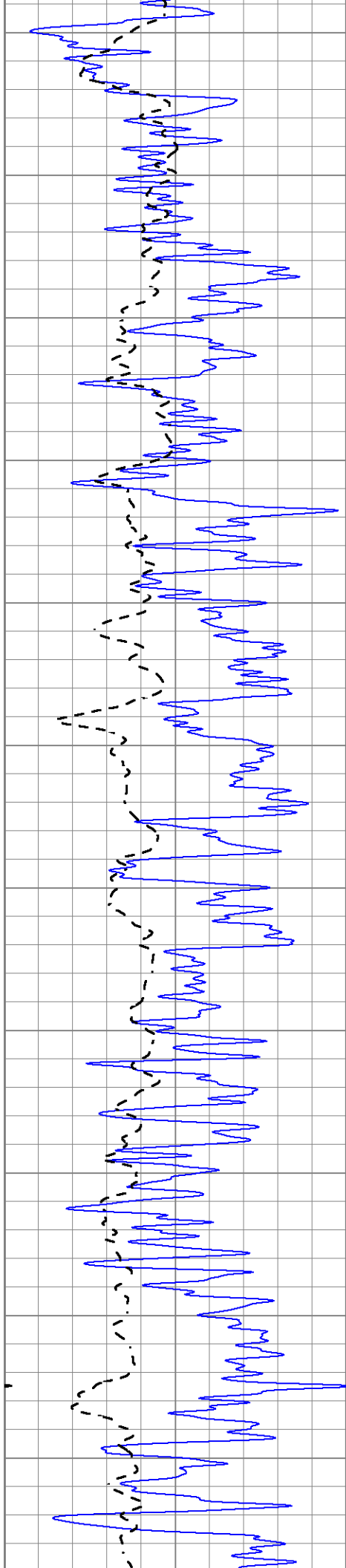
MAIN SECTION

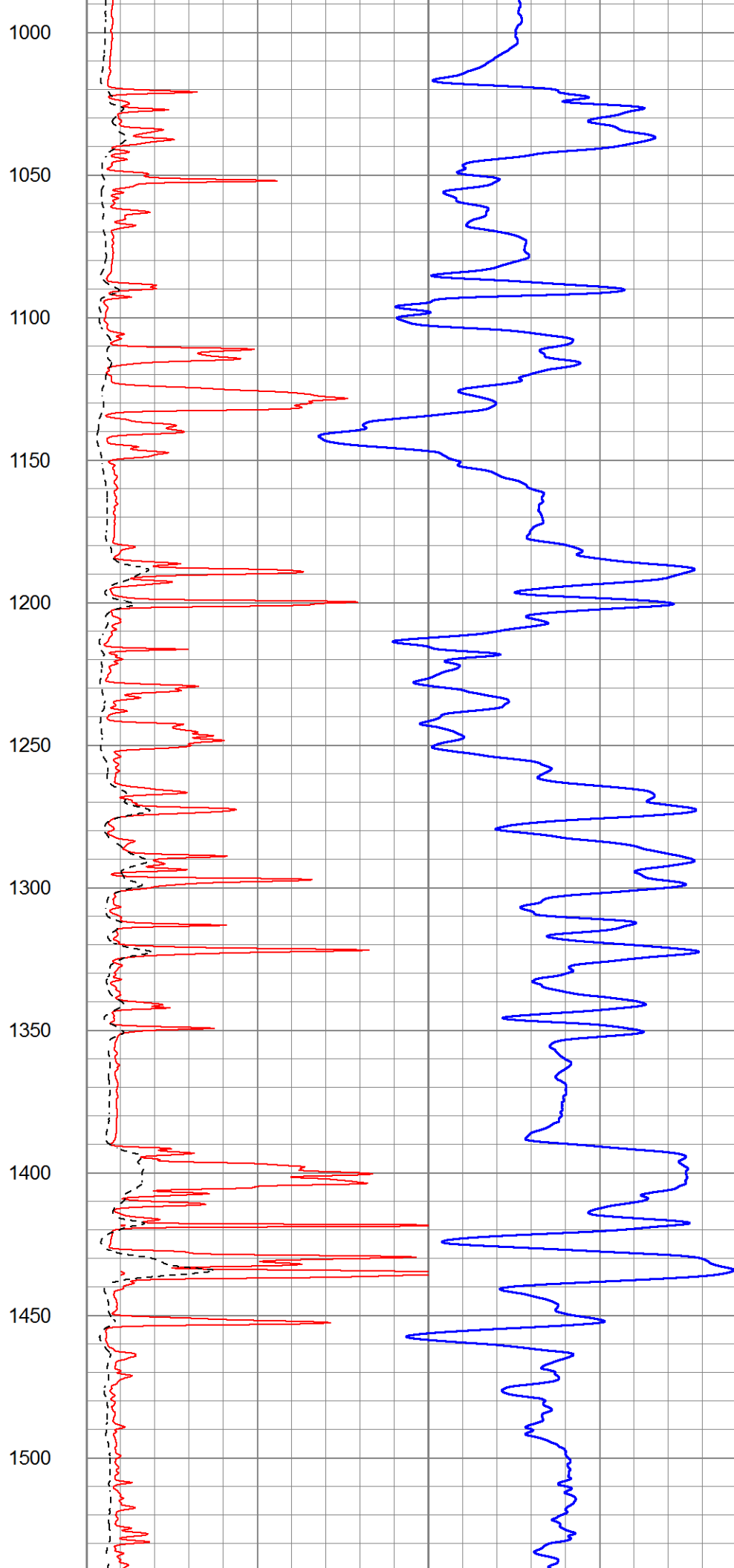
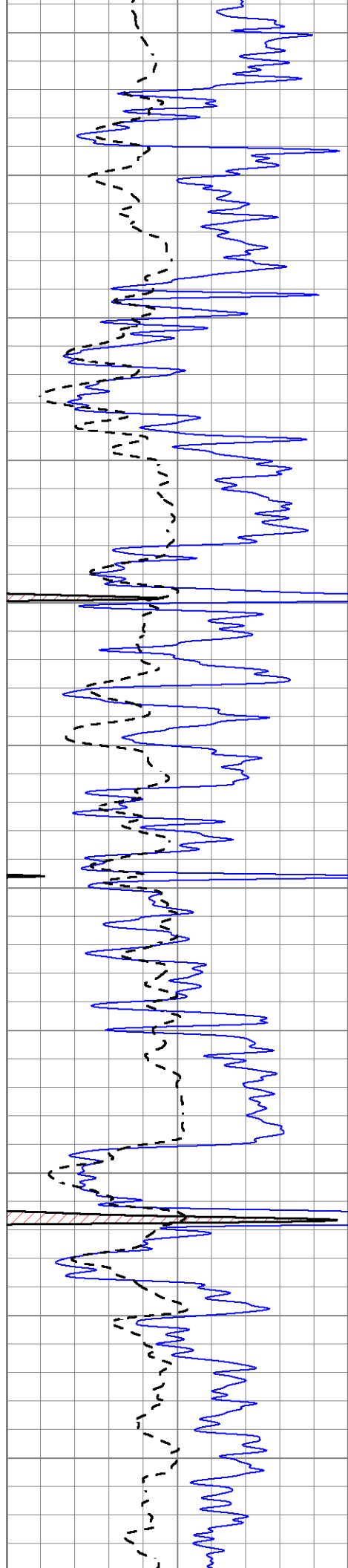
Database File 5858ddn.db
 Dataset Pathname pass3.2
 Presentation Format _dil2
 Dataset Creation Fri Oct 01 03:18:54 2021
 Charted by Depth in Feet scaled 1:600

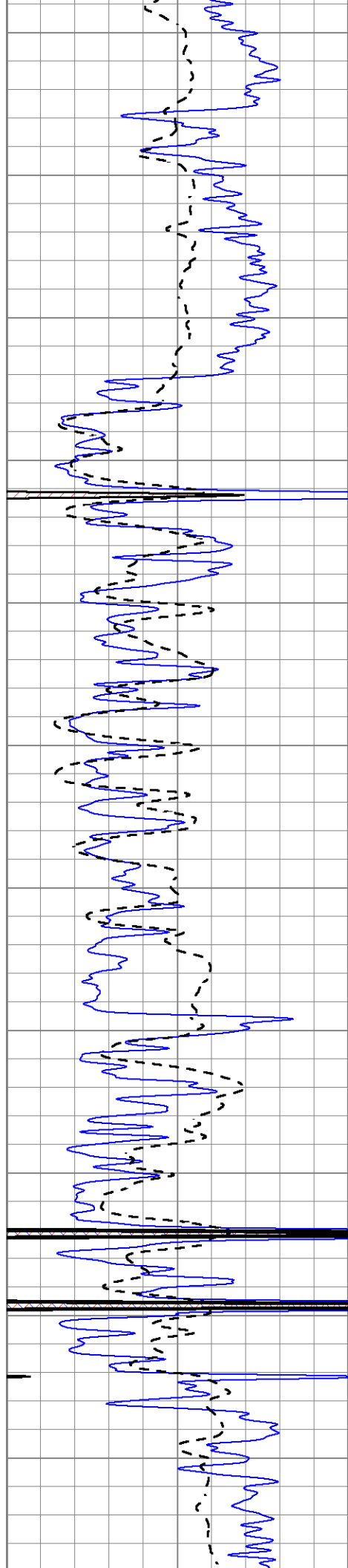
0 Gamma Ray (GAPI) 150
 -100 SP (mV) 100

1000 CILD (mmho/m) 0
 0 RLL3 (Ohm-m) 50
 0 Deep Induction (Ohm-m) 50
 50 RILD X10 (Ohm-m) 500
 50 RLL3 X10 (Ohm-m) 500









1550

1600

1650

1700

1750

1800

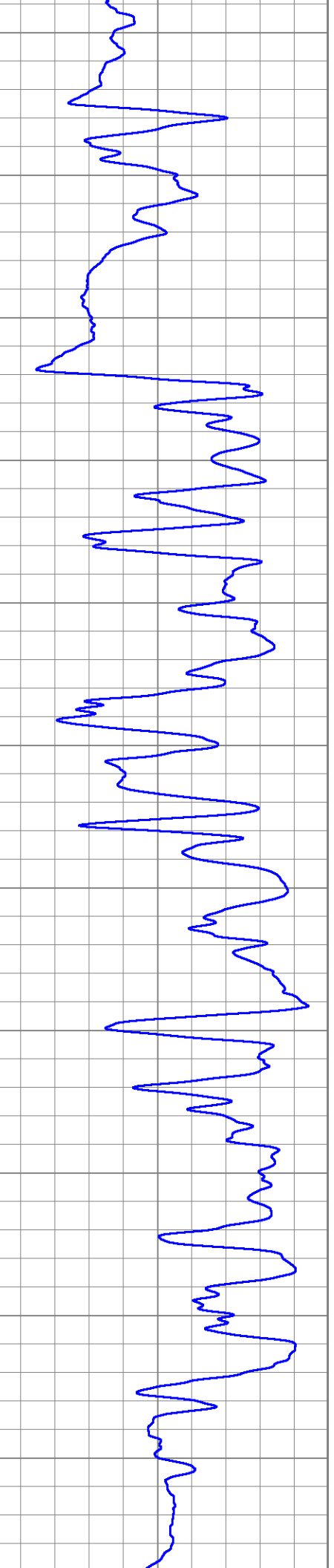
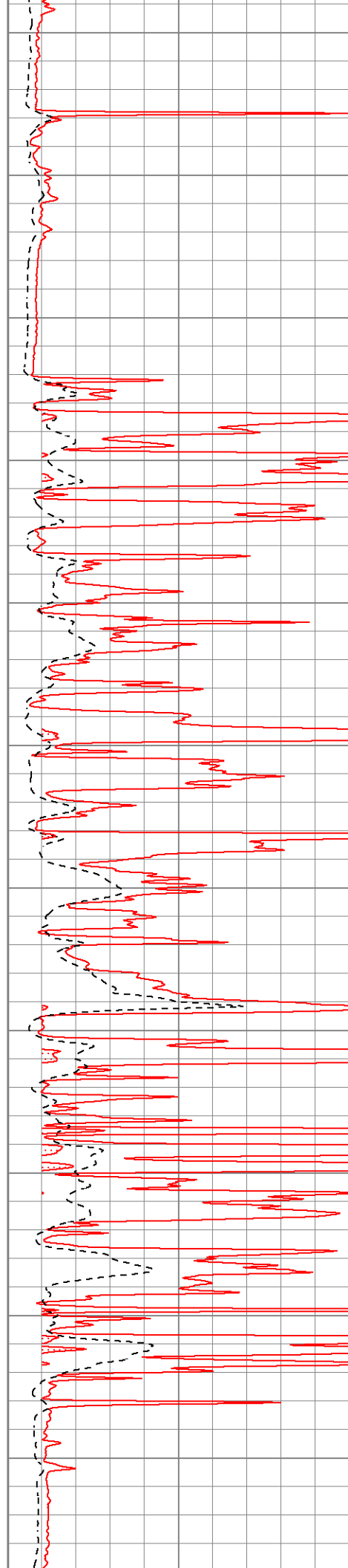
1850

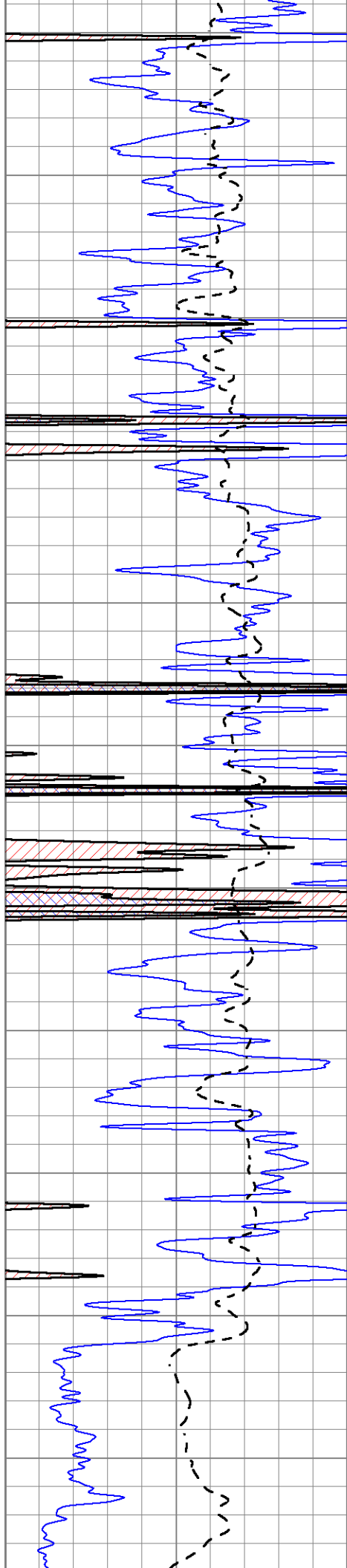
1900

1950

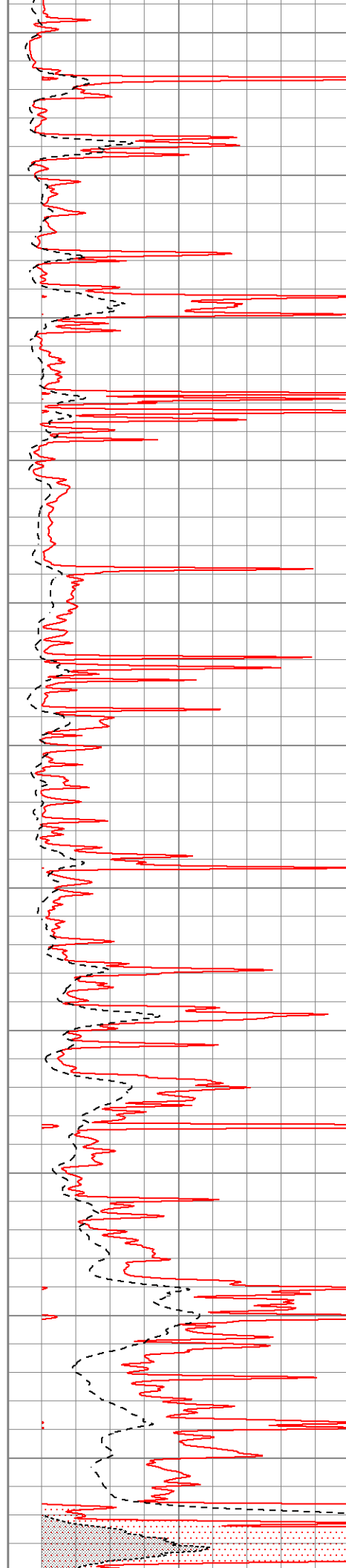
2000

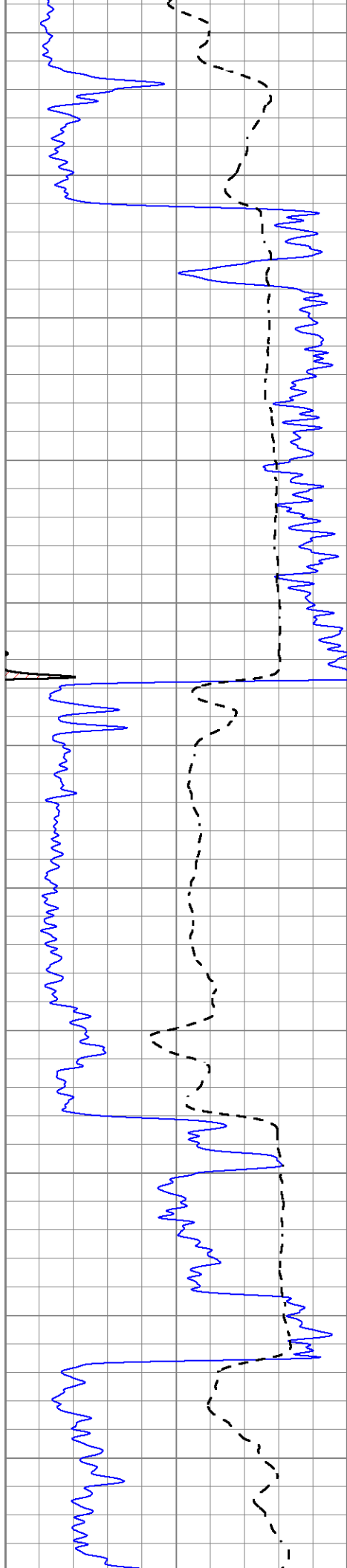
2050





2100
2150
2200
2250
2300
2350
2400
2450
2500
2550
2600





2650

2700

2750

2800

2850

2900

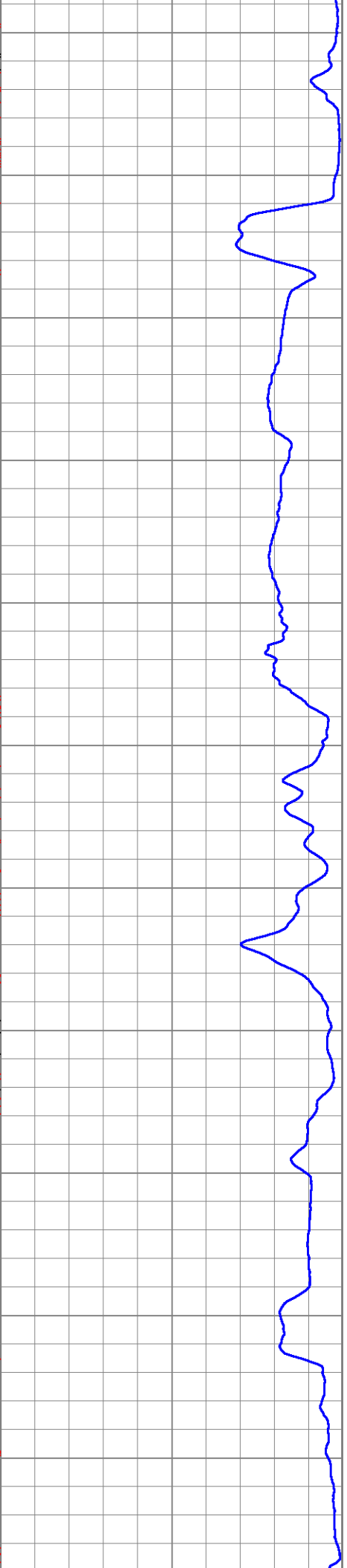
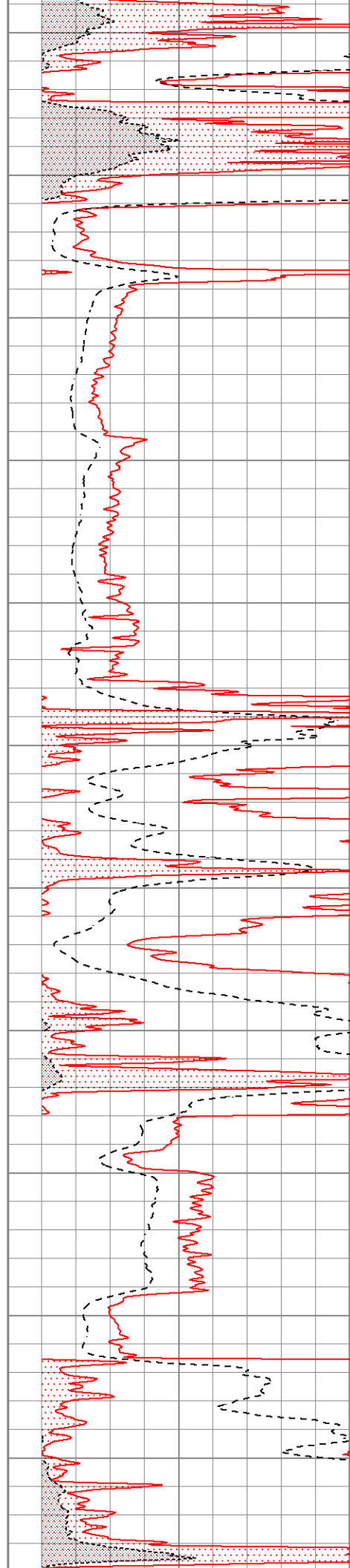
2950

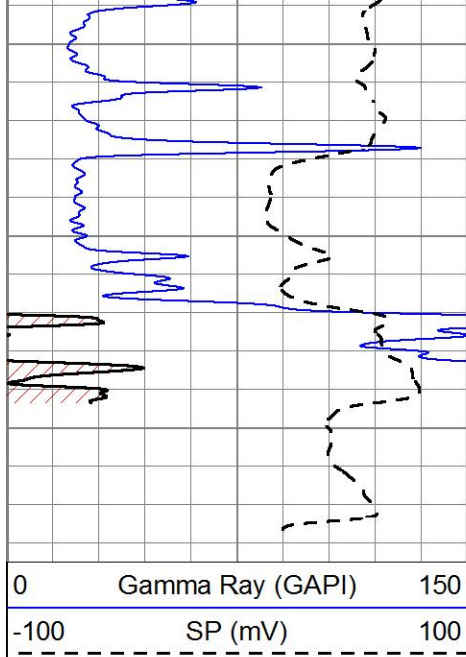
3000

3050

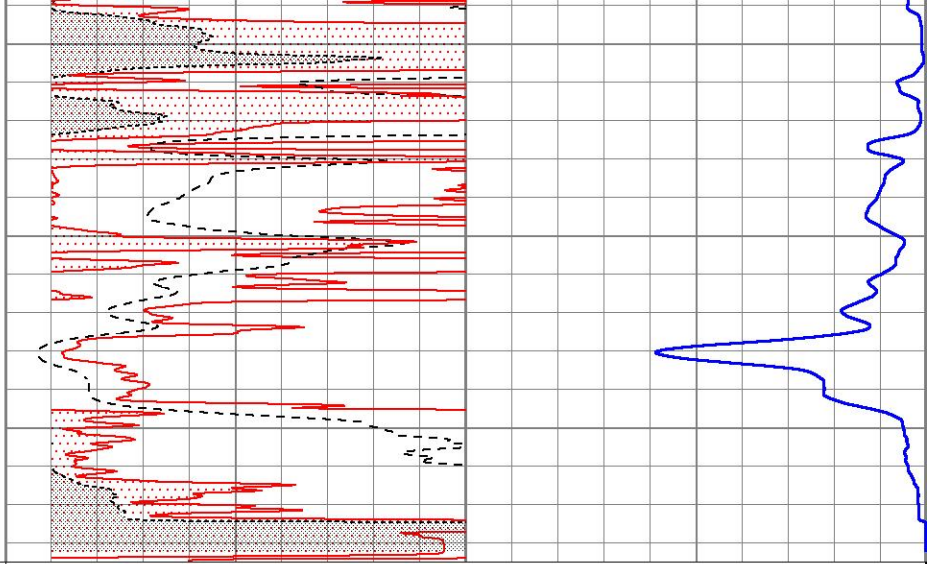
3100

3150





3200
3250
3300



| | | |
|------|------------------------|-----|
| 1000 | CILD (mmho/m) | 0 |
| 0 | RLL3 (Ohm-m) | 50 |
| 0 | Deep Induction (Ohm-m) | 50 |
| 50 | RILD X10 (Ohm-m) | 500 |
| 50 | RLL3 X10 (Ohm-m) | 500 |

| | | |
|------|------------------|-----|
| 0 | Gamma Ray (GAPI) | 150 |
| -100 | SP (mV) | 100 |

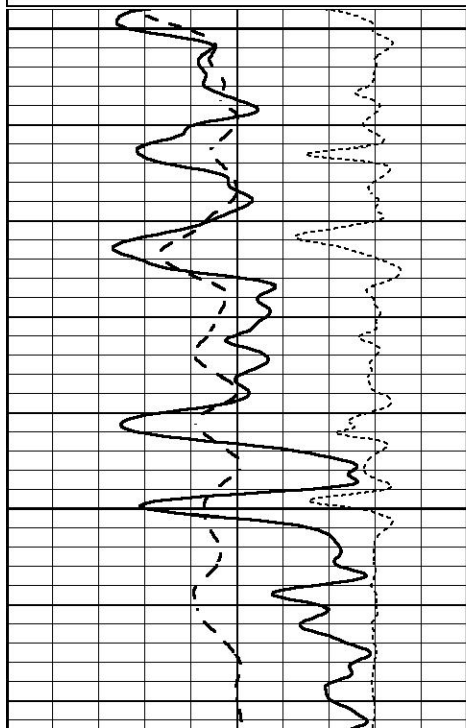


MAIN SECTION

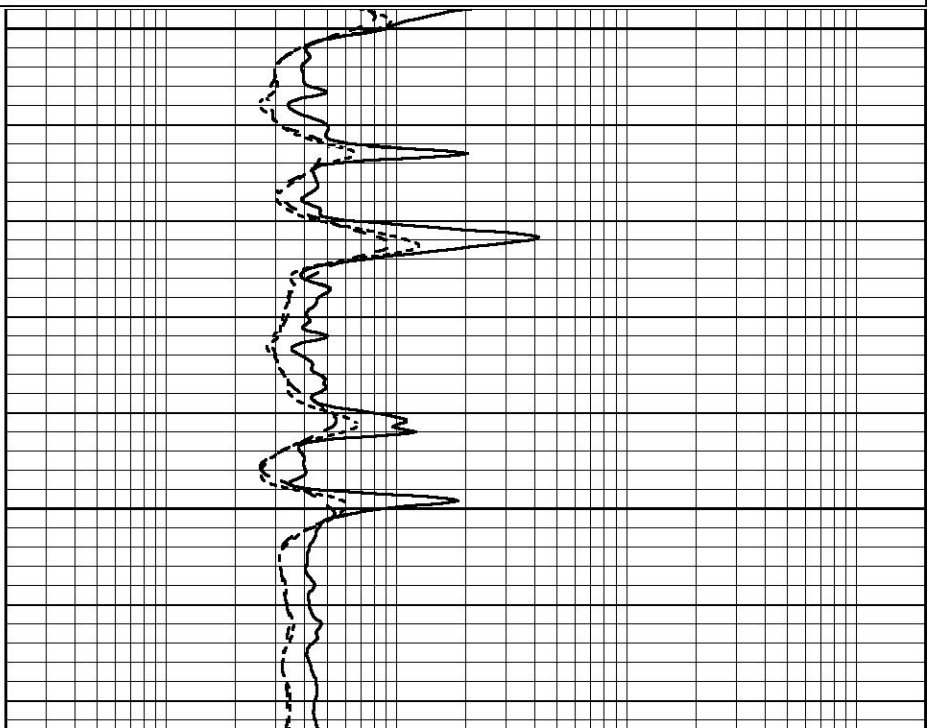
Database File 5858ddn.db
 Dataset Pathname pass3.1
 Presentation Format _dil
 Dataset Creation Fri Oct 01 02:04:59 2021
 Charted by Depth in Feet scaled 1:240

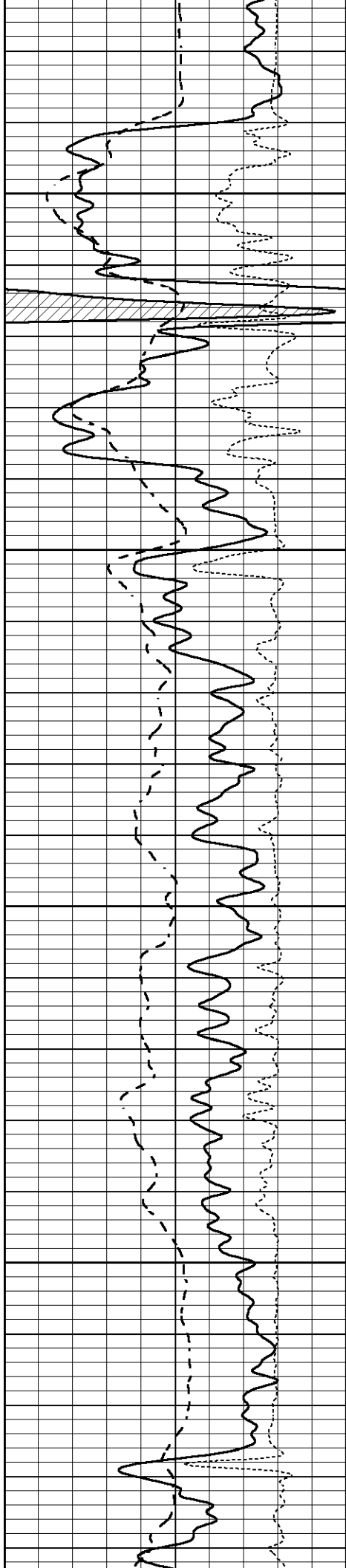
| | | |
|------|------------------|-----|
| 0 | GAMMA RAY (GAPI) | 150 |
| -100 | SP (mV) | 100 |
| -250 | Rxo/Rt | 50 |

| | | |
|-----|--------------------------|------|
| 0.2 | SHALLOW GUARD (Ohm-m) | 2000 |
| 0.2 | MEDIUM INDUCTION (Ohm-m) | 2000 |
| 0.2 | DEEP INDUCTION (Ohm-m) | 2000 |



1300
1350



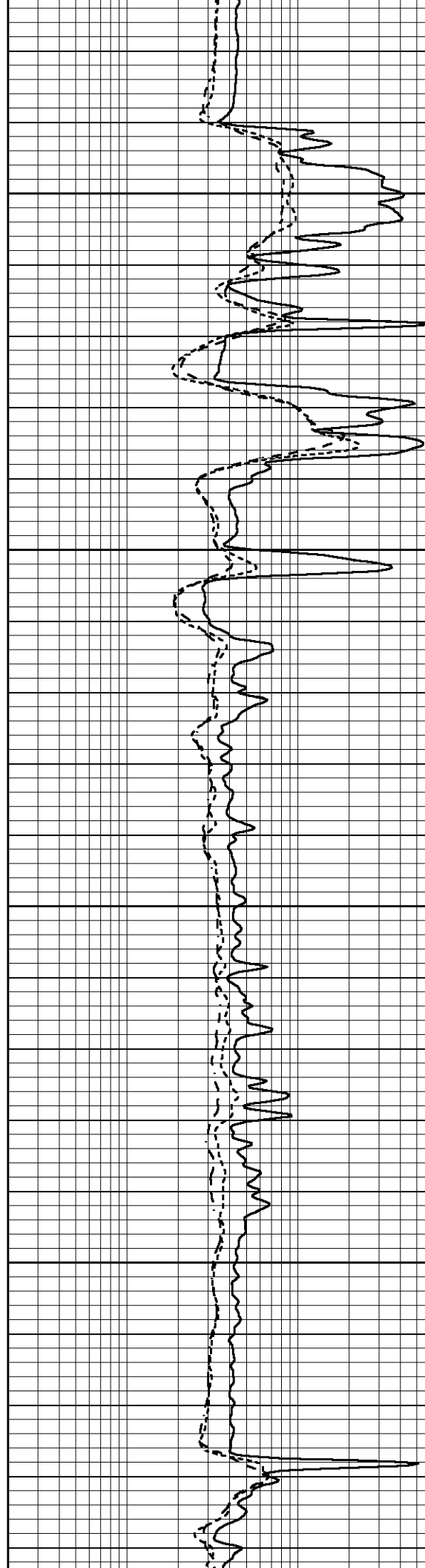


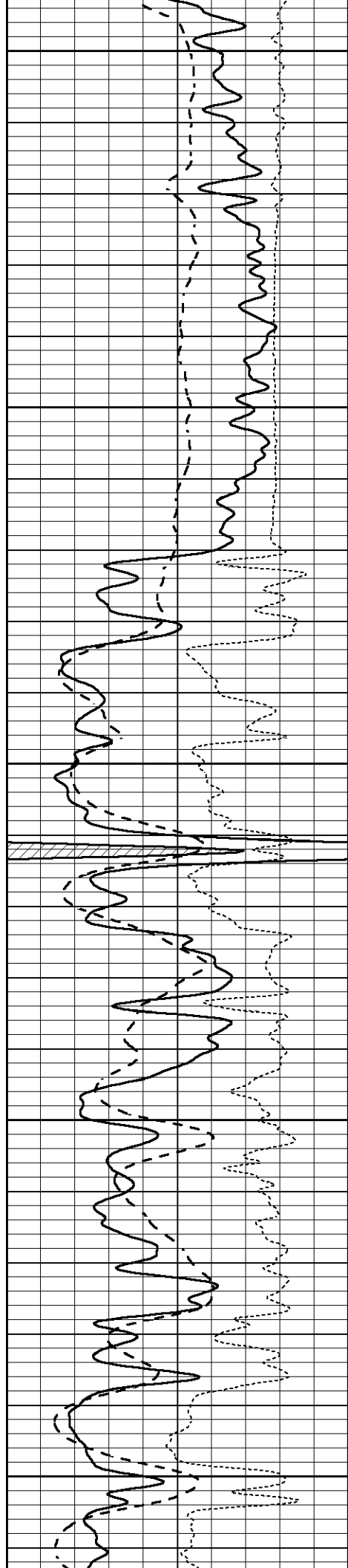
1400

1450

1500

1550





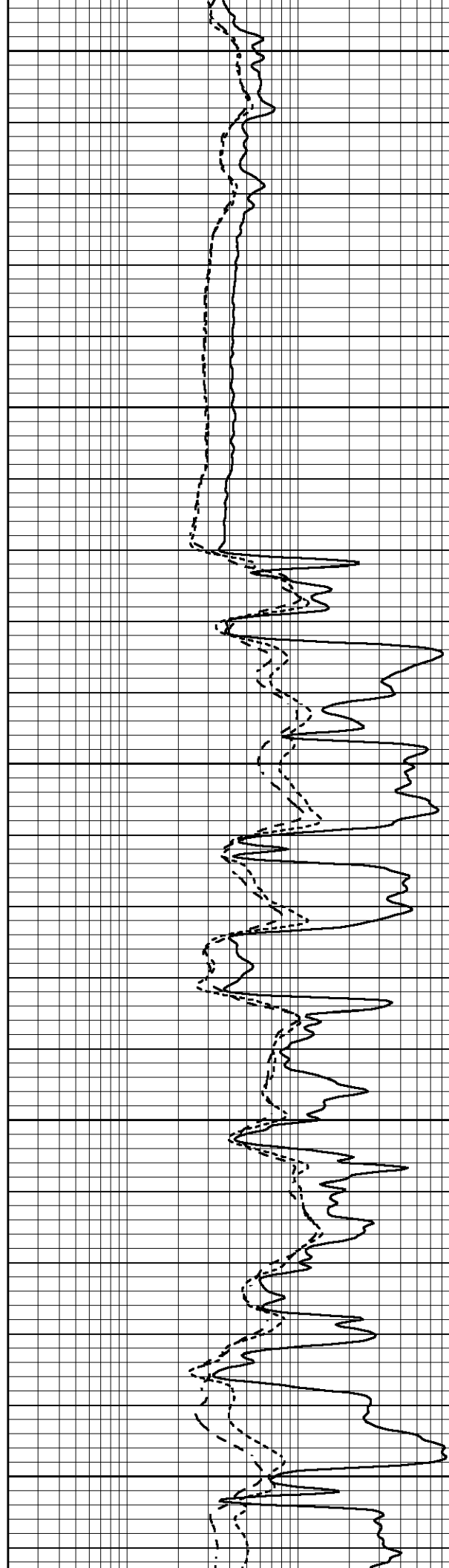
1600

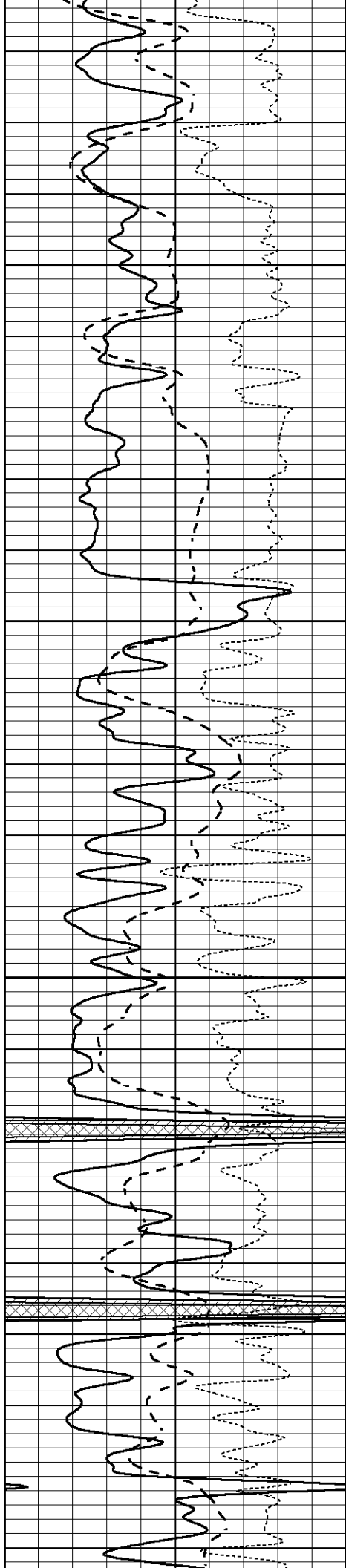
1650

1700

1750

1800



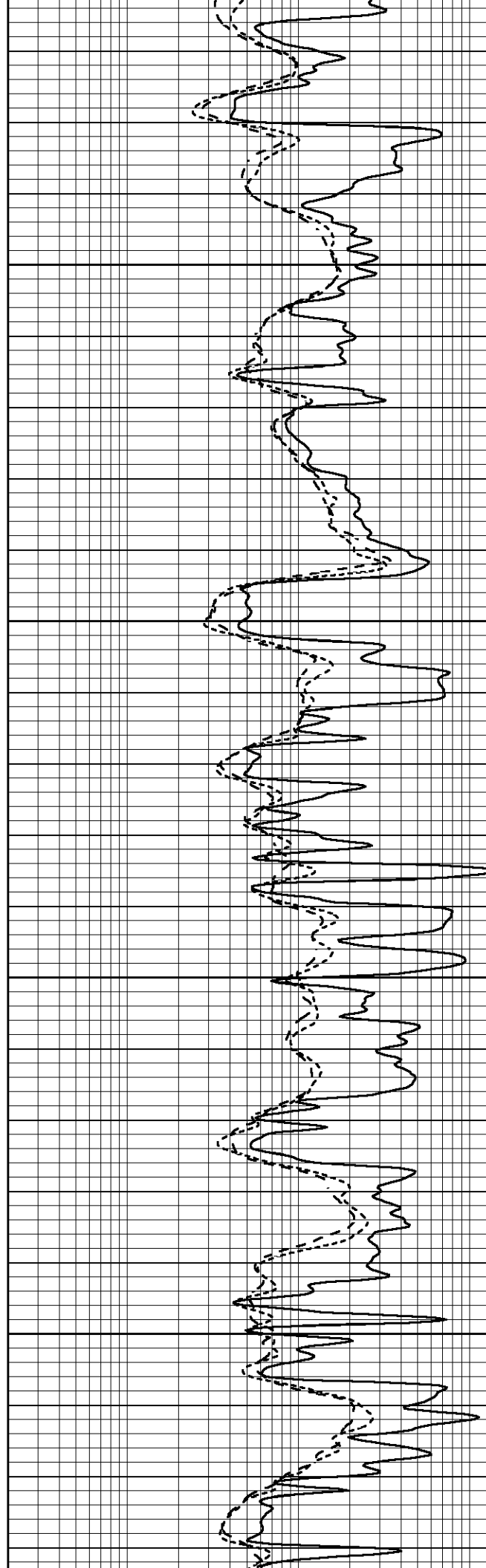


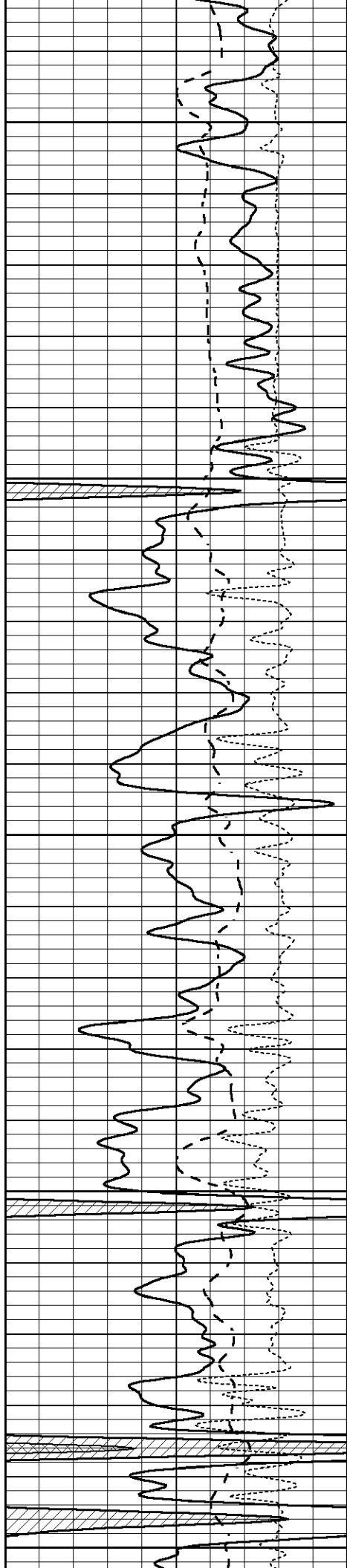
1850

1900

1950

2000





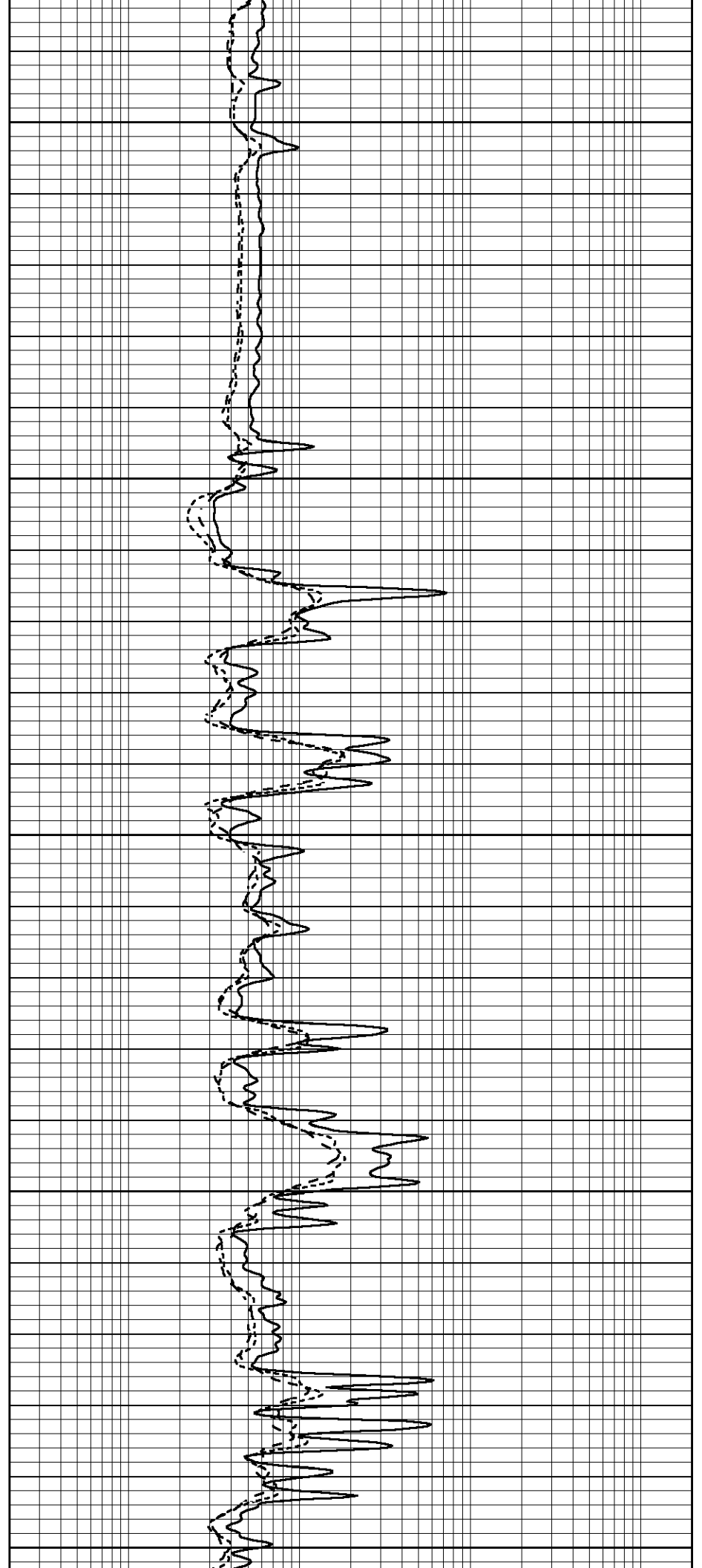
2050

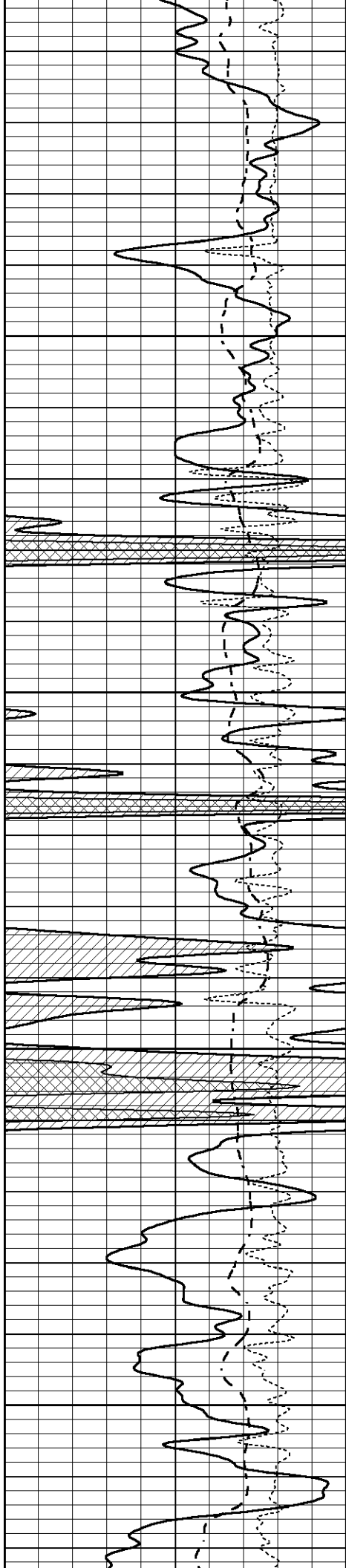
2100

2150

2200

2250



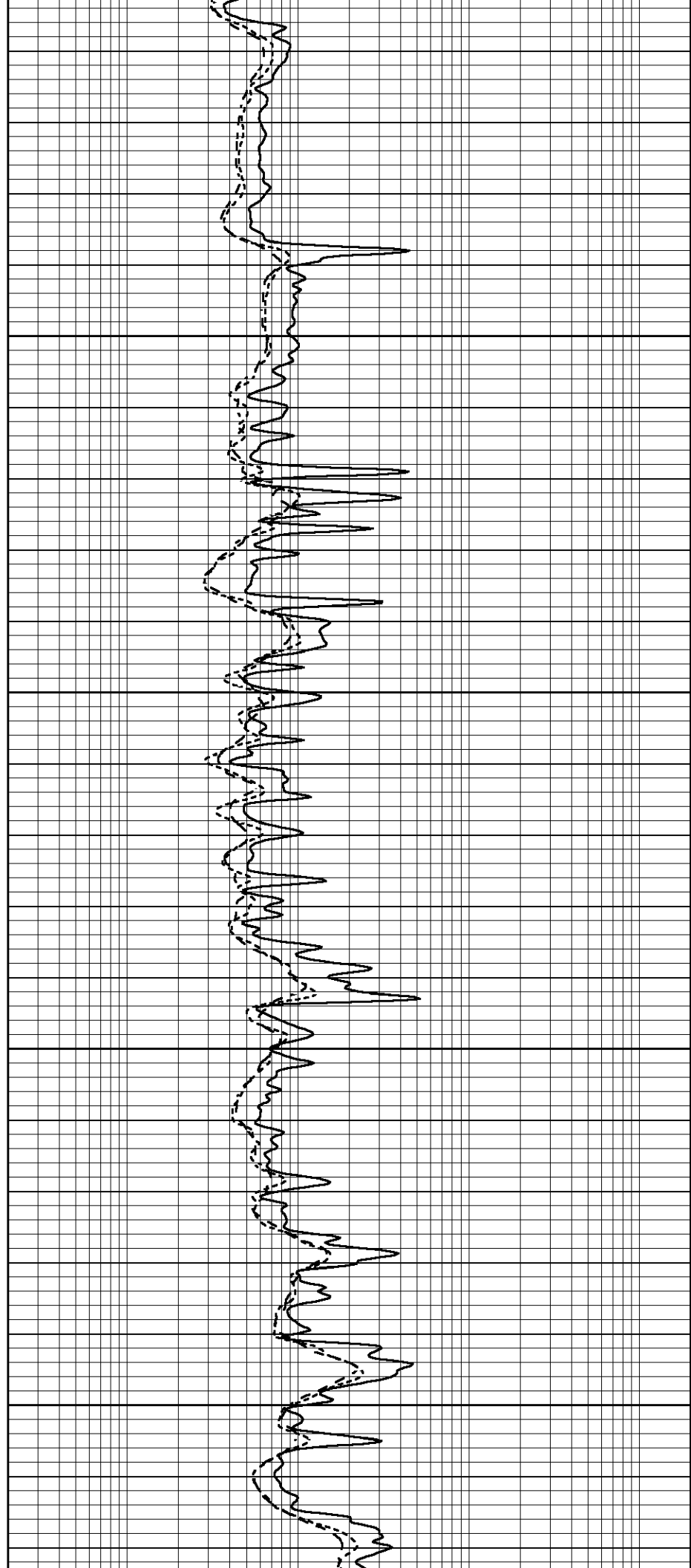


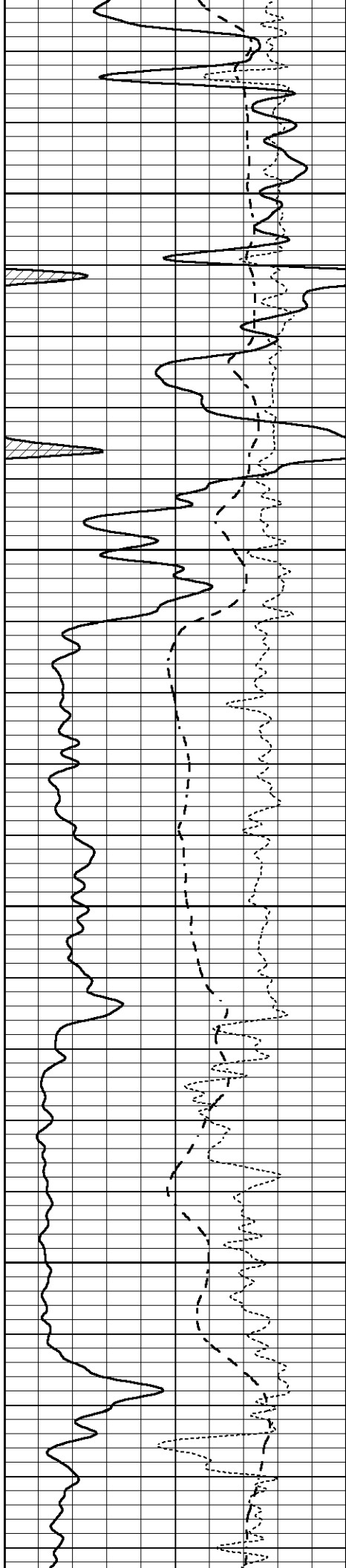
2300

2350

2400

2450



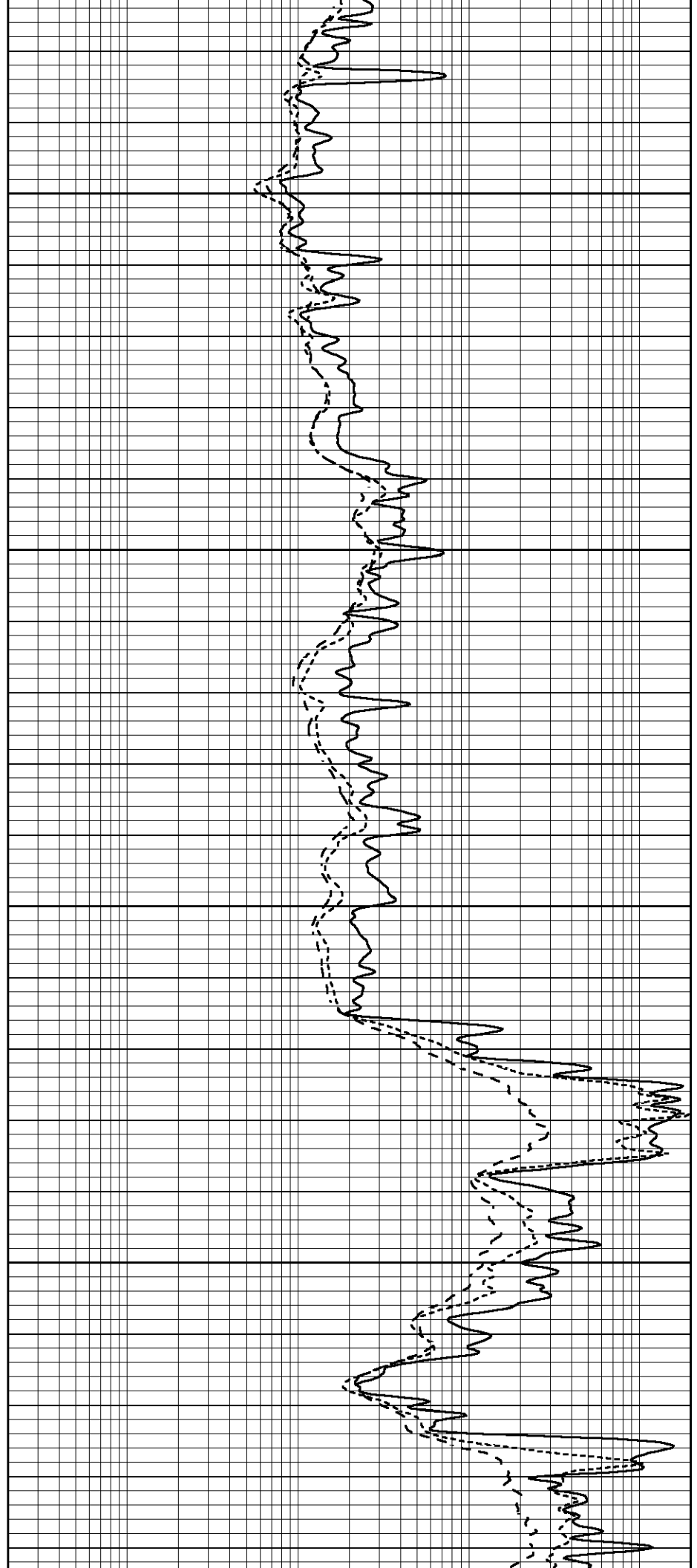


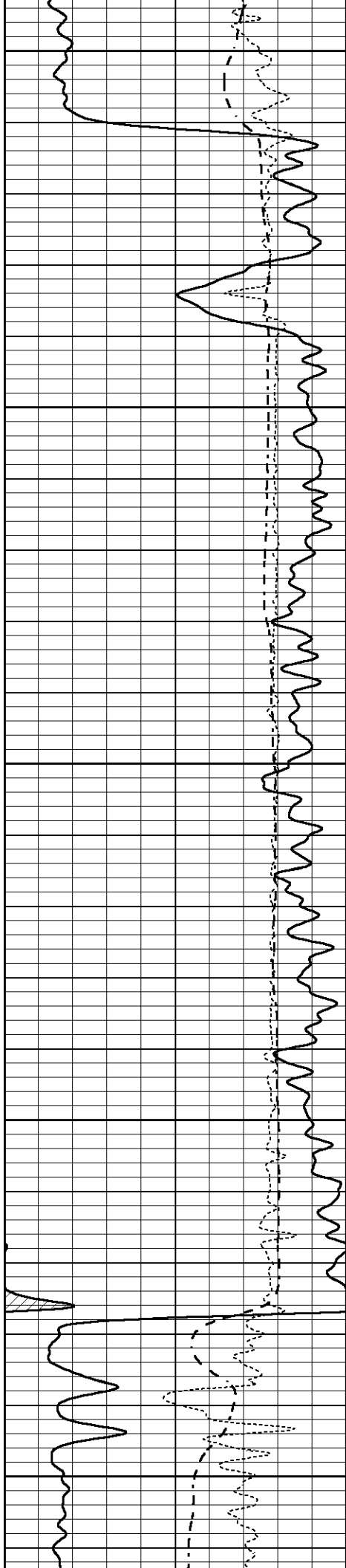
2500

2550

2600

2650





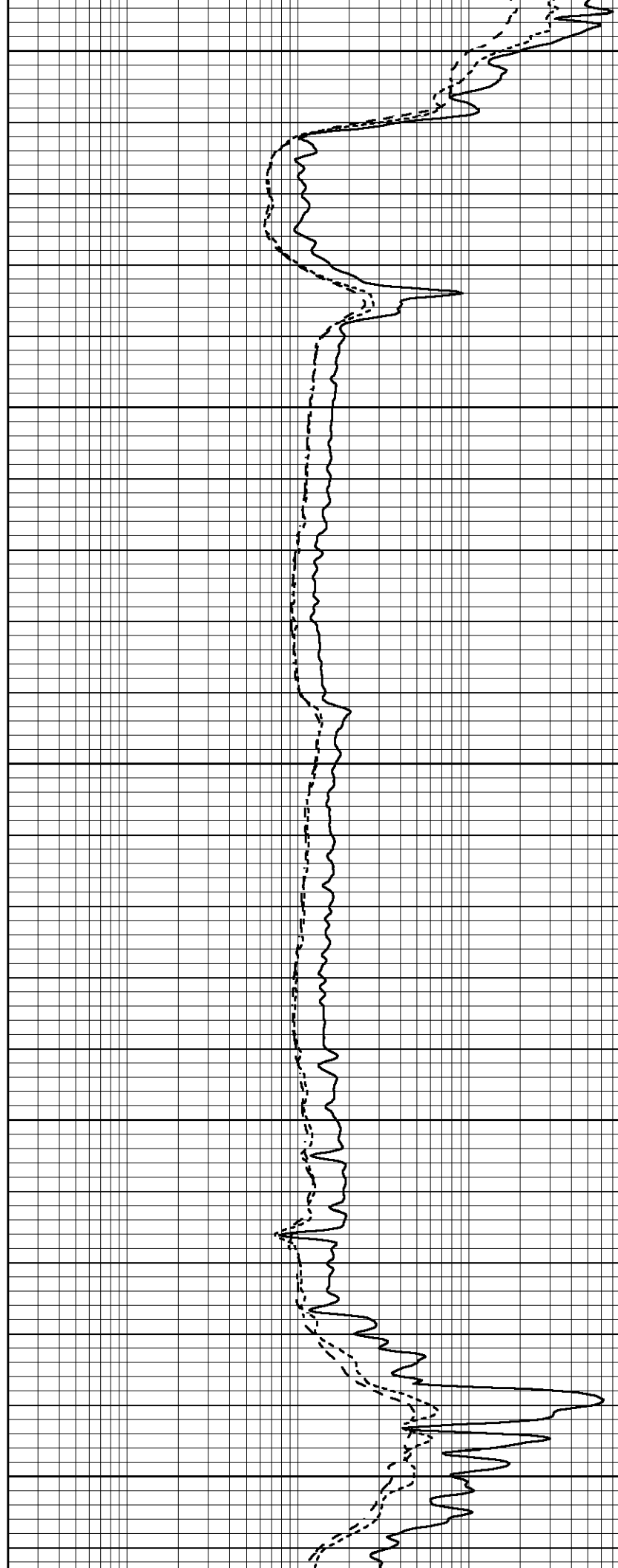
2700

2750

2800

2850

2900



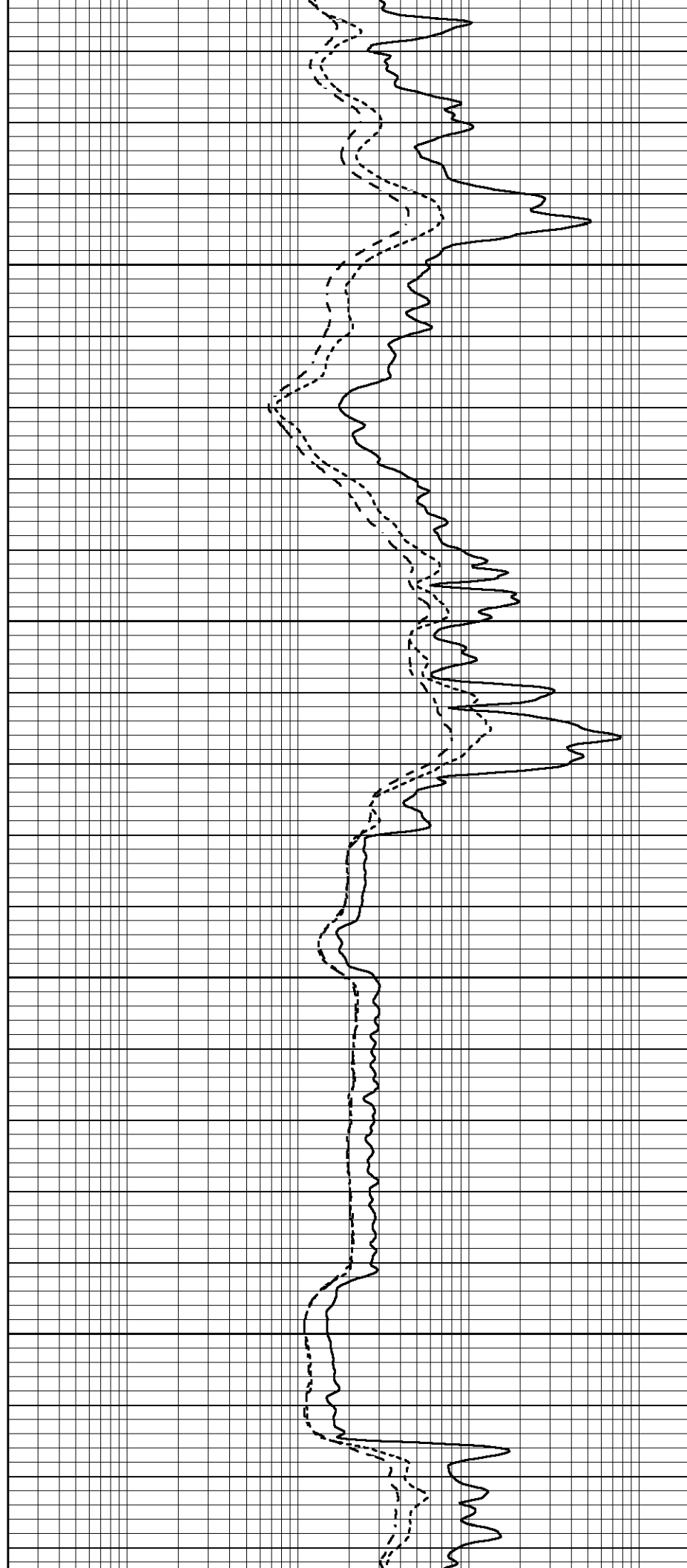


2950

3000

3050

3100





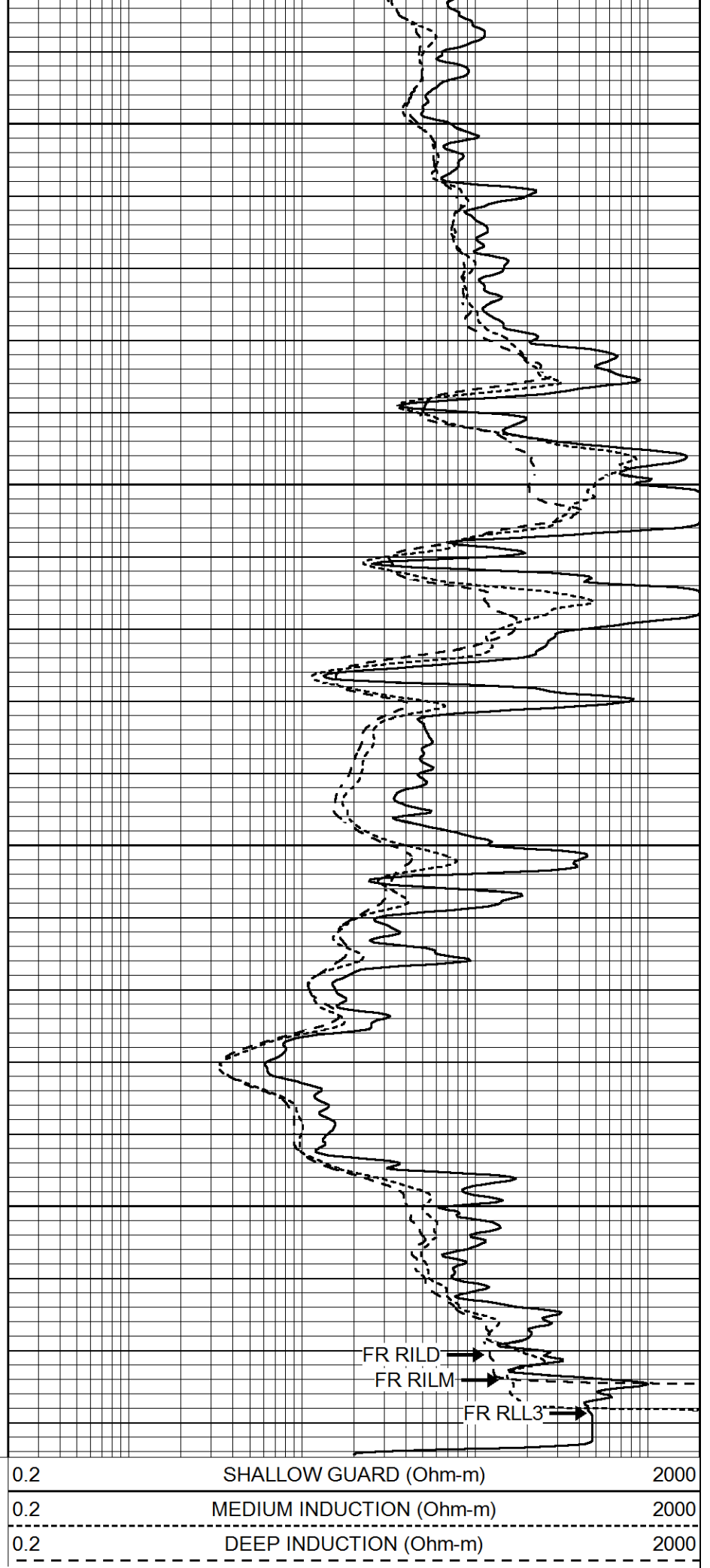
3150

3200

3250

3300

LTD 3331



3150

3200

3250

3300

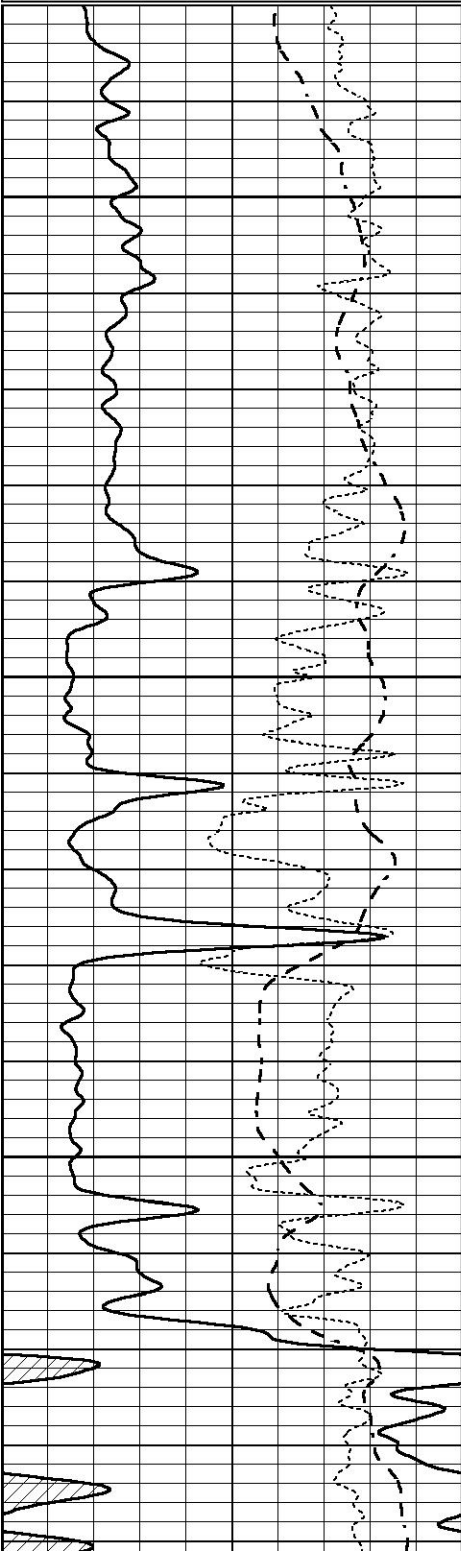


REPEAT SECTION

Database File 5858ddn.db
 Dataset Pathname pass2.2
 Presentation Format _dil
 Dataset Creation Fri Oct 01 02:10:15 2021
 Charted by Depth in Feet scaled 1:240

| | | |
|------|------------------|-----|
| 0 | GAMMA RAY (GAPI) | 150 |
| -100 | SP (mV) | 100 |
| -250 | Rxo/Rt | 50 |

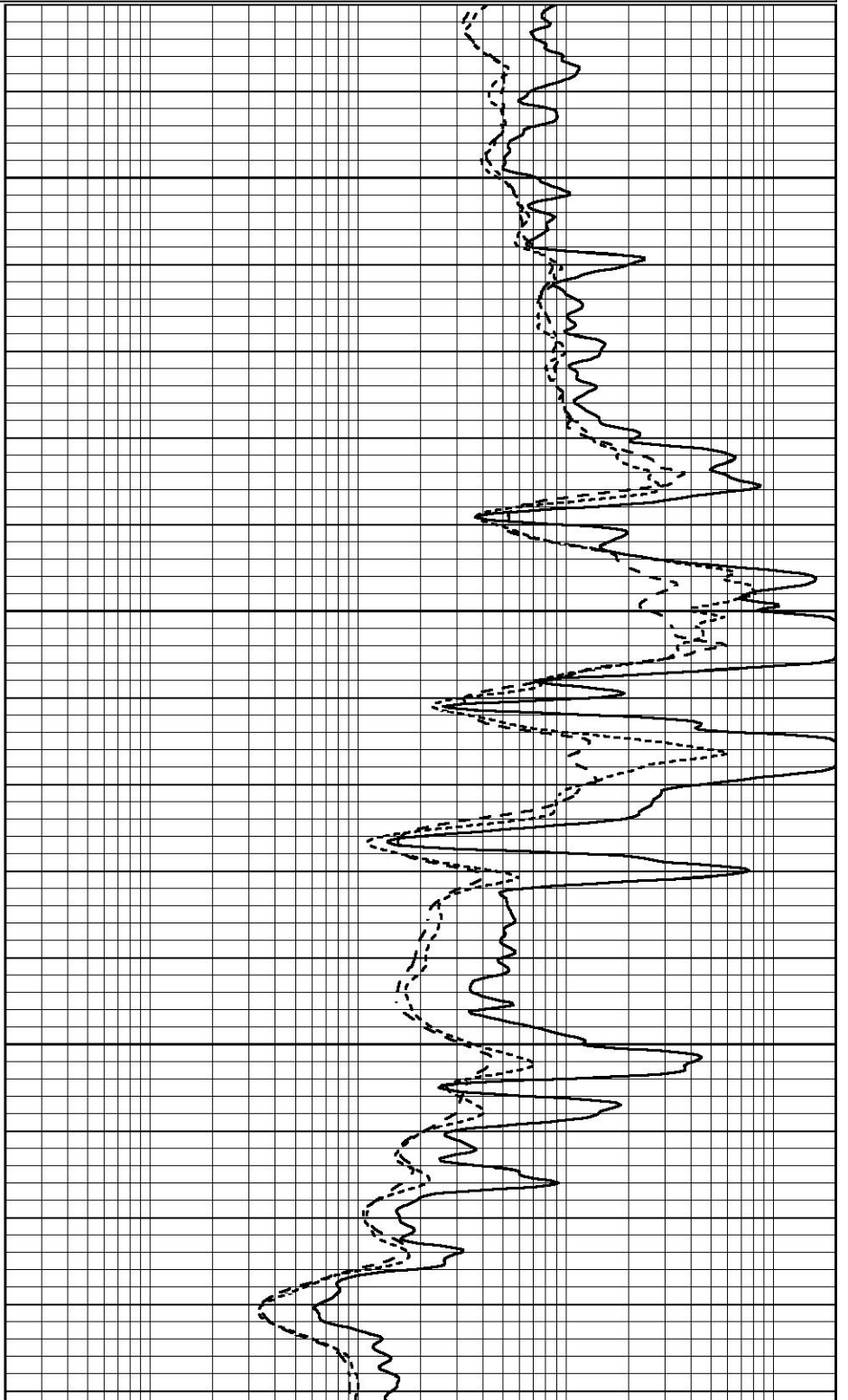
| | | |
|-----|--------------------------|------|
| 0.2 | SHALLOW GUARD (Ohm-m) | 2000 |
| 0.2 | MEDIUM INDUCTION (Ohm-m) | 2000 |
| 0.2 | DEEP INDUCTION (Ohm-m) | 2000 |

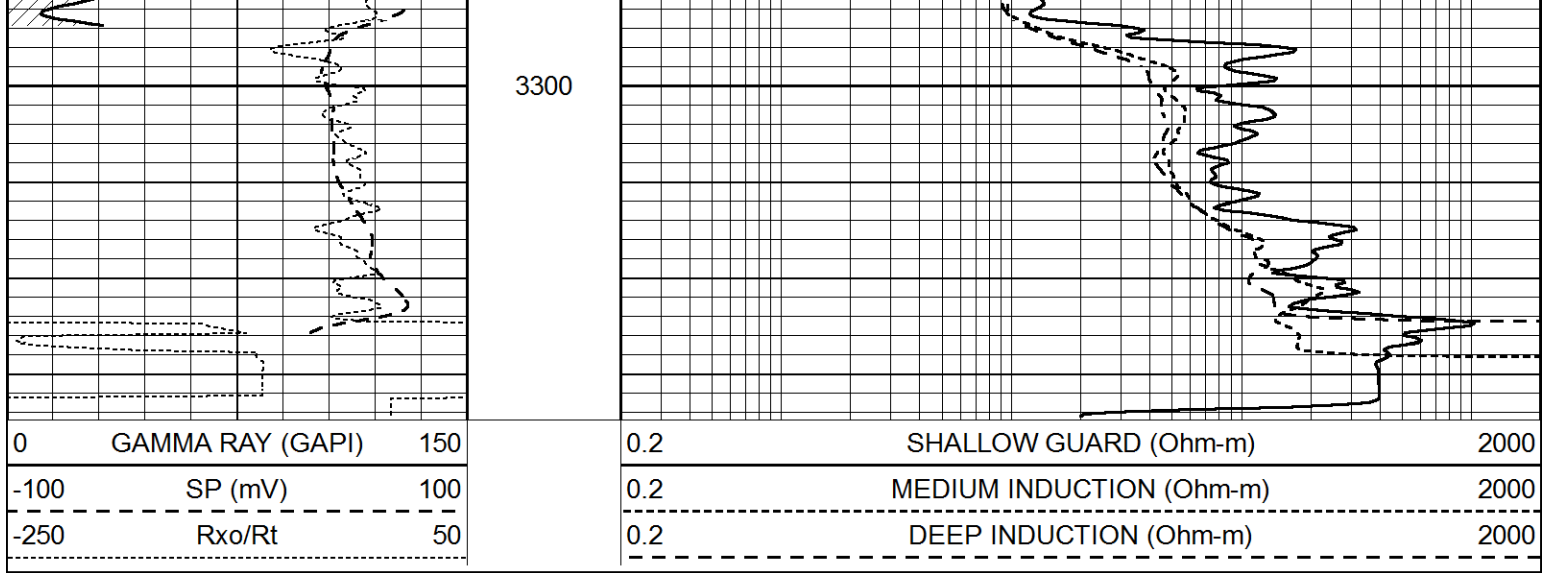


3150

3200

3250





Calibration Report

Database File 5858ddn.db
 Dataset Pathname pass2.2
 Dataset Creation Fri Oct 01 02:10:15 2021

Dual Induction Calibration Report

Serial-Model: FW1410-55-Probe
 Surface Cal Performed: Tue Feb 19 11:44:18 2019
 Downhole Cal Performed: Tue Feb 19 11:44:24 2019
 After Survey Verification Performed: Tue Feb 19 11:44:27 2019

Surface Calibration

| Loop: | Readings | | | | References | | | Results | |
|-----------|----------|-------|---|-------|------------|--------|---------|---------|---|
| | Air | Loop | | | Air | Loop | | m | b |
| Deep | 0.011 | 0.656 | V | 1.000 | 400.000 | mmho/m | 618.595 | -5.524 | |
| Medium | -0.000 | 0.731 | V | 1.000 | 400.000 | mmho/m | 545.377 | 1.170 | |
| Internal: | Zero | | | | Cal | | | | |
| Deep | 0.007 | 0.649 | V | 0.000 | 400.000 | mmho/m | 623.784 | -4.595 | |
| Medium | 0.004 | 0.743 | V | 0.000 | 464.000 | mmho/m | 627.284 | -2.251 | |

Downhole Calibration

| | Readings | | | | References | | | Results | |
|--------|----------|---------|--------|--------|------------|--------|-------|---------|----|
| | Zero | Cal | | | Zero | Cal | | m' | b' |
| Deep | -0.824 | 395.917 | mmho/m | -0.976 | 397.550 | mmho/m | 1.004 | -0.149 | |
| Medium | 3.565 | 471.327 | mmho/m | 3.468 | 471.590 | mmho/m | 1.001 | -0.099 | |
| LL3 | | 7.503 | V | | 1500.000 | Ohm-m | | | |
| | | 0.001 | V | | 20.000 | Ohm-m | | | |
| | | -7.481 | V | | 3745.000 | mmho-m | | | |

After Survey Verification

| | Readings | | | | Targets | | | Results | |
|--------|----------|-------|--------|--------|----------|--------|-------|---------|----|
| | Zero | Cal | | | Zero | Cal | | m' | b' |
| Deep | 0.000 | 0.000 | mmho/m | -0.824 | 395.917 | mmho/m | 1.000 | 0.000 | |
| Medium | 0.000 | 0.000 | mmho/m | 3.565 | 471.327 | mmho/m | 1.000 | 0.000 | |
| LL3 | | 0.000 | Ohm-m | | 1500.000 | Ohm-m | | | |
| | | 0.000 | Ohm-m | | 20.000 | Ohm-m | | | |
| | | 0.000 | mmho-m | | 3745.000 | mmho-m | | | |

Litho Density Calibration Report

Master Calibration Performed: Mon Dec 07 12:12:14 2020

| | Background | Aluminum | Magnesium | |
|--------------|---------------|-----------|--------------|----------|
| Window 1 | 557.73 | 5525.14 | 24361.20 | cps |
| Window 2 | 47.08 | 1245.09 | 5901.17 | cps |
| Window 4 | 239.06 | 1250.70 | 5456.76 | cps |
| Window 5 | 564.08 | 8300.56 | 16134.07 | cps |
| Window 6 | 44.21 | 1356.78 | 2705.40 | cps |
| Window 8 | 267.87 | 2686.97 | 5150.30 | cps |
| Bulk Density | - | 2.6020 | 1.6830 | g/cc |
| Pe | - | 3.0000 | 2.5070 | b/e |
| LS Alpha: | : -1.8719 | SS Alpha: | : -0.8000 | LS CPE: |
| LS Beta: | : 135562.6841 | SS Beta: | : 20128.7209 | SS CPE: |
| | | | | : 1.1424 |
| | | | | : 1.5489 |

Before Survey Background Counts Verification Performed: Wed Dec 31 18:00:00 1969

| | | |
|----------|------|-----|
| Window 1 | 0.00 | cps |
| Window 2 | 0.00 | cps |
| Window 4 | 0.00 | cps |
| Window 5 | 0.00 | cps |
| Window 6 | 0.00 | cps |
| Window 8 | 0.00 | cps |

After Survey Background Counts Verification Performed: Wed Dec 31 18:00:00 1969

| | | |
|----------|------|-----|
| Window 1 | 0.00 | cps |
| Window 2 | 0.00 | cps |
| Window 4 | 0.00 | cps |
| Window 5 | 0.00 | cps |
| Window 6 | 0.00 | cps |
| Window 8 | 0.00 | cps |

Lithodensity Caliper Calibration Performed: Mon Dec 07 12:12:14 2020

| Results | Readings | | References (in) | | Gain | Offset |
|---------|----------|-----|-----------------|------|--------|--------|
| Low | High | Low | High | Gain | Offset | |
| 5852.8 | 8972.7 | 8.0 | 14.0 | 0.0 | -3.3 | |

Before Survey Caliper Verification Performed:

| | Reference | Reading |
|--------------|-----------|---------|
| Caliper (in) | _____ | _____ |

After Survey Caliper Verification Performed:

| | Reference | Reading |
|--------------|-----------|---------|
| Caliper (in) | _____ | _____ |

Serial Number: 080621PMC
 Tool Model: NABORS

PRE-SURVEY VERIFICATION

| Detector | Readings | Measured | Target |
|-------------|----------|----------|--------|
| Short Space | cps | | |
| Long Space | cps | pu | pu |

POST-SURVEY VERIFICATION

| Detector | Readings | Measured | Target |
|-------------|----------|----------|--------|
| Short Space | cps | | |
| Long Space | cps | pu | pu |

Gamma Ray Calibration Report

| | | |
|---------------------|--------------------------|----------|
| Serial Number: | 7 | |
| Tool Model: | Probe1 | |
| Performed: | Tue Jan 19 17:50:08 2021 | |
| Calibrator Value: | 1.0 | GAPI |
| Background Reading: | 0.0 | cps |
| Calibrator Reading: | 1.0 | cps |
| Sensitivity: | 0.5300 | GAPI/cps |