

MICRO LOG



Company ARCADIAN RESOURCES, LLC.  
 Well LYNN #12-1  
 Field UNNAMED  
 County CHEYENNE  
 State KANSAS

Company ARCADIAN RESOURCES, LLC.  
 Well LYNN #12-1  
 Field UNNAMED  
 County CHEYENNE State KANSAS

Location: API #: 15-023-21615-0000  
 1550' FNL & 1090' FWL  
 NE - NE - SW - NW  
 Permanent Datum GROUND LEVEL Elevation 3381  
 Log Measured From KELLY BUSHING 6' A.G.L.  
 Drilling Measured From KELLY BUSHING  
 SEC 12 TWP 5S RGE 37W  
 Other Services  
 CDL/CNL/PE  
 DIL  
 Elevation  
 K.B. 3387  
 D.F. 3385  
 G.L. 3381

|                              |               |                     |
|------------------------------|---------------|---------------------|
| Date                         | 5/14/23       |                     |
| Run Number                   | TWO           |                     |
| Depth Driller                | 4980          |                     |
| Depth Logger                 | 4980          |                     |
| Bottom Logged Interval       | 4978          |                     |
| Top Log Interval             | 3800          |                     |
| Casing Driller               | 8 5/8"@355'   |                     |
| Casing Logger                | 355           |                     |
| Bit Size                     | 7 7/8"        |                     |
| Type Fluid in Hole           | CHEMICAL MUD  | CHLORIDES 1,400 PPM |
| Density / Viscosity          | 9.4/57        |                     |
| pH / Fluid Loss              | 9.5/8.0       |                     |
| Source of Sample             | FLOWLINE      |                     |
| Rm @ Meas. Temp              | 1.60@74F      |                     |
| Rmf @ Meas. Temp             | 1.20@74F      |                     |
| Rmc @ Meas. Temp             | 1.92@74F      |                     |
| Source of Rmf / Rmc          | MEASUREMENT   |                     |
| Rm @ BHT                     | .947@125F     |                     |
| Time Circulation Stopped     | 5 HOURS       |                     |
| Time Logger on Bottom        | 4:45 P.M.     |                     |
| Maximum Recorded Temperature | 125F          |                     |
| Equipment Number             | 922339        |                     |
| Location                     | HAYS, KANSAS  |                     |
| Recorded By                  | JEFF LUEBBERS |                     |
| Witnessed By                 | SEAN DEENIHAN |                     |

<<< Fold Here >>>

All interpretations are opinions based on inferences from electrical or other measurements and we cannot and do not guarantee the accuracy or correctness of any interpretation, and we shall not, except in the case of gross or willful negligence on our part, be liable or responsible for any loss, costs, damages, or expenses incurred or sustained by anyone resulting from any interpretation made by any of our officers, agents or employees. These interpretations are also subject to our general terms and conditions set out in our current Price Schedule.

15-023-21615-0000

Comments

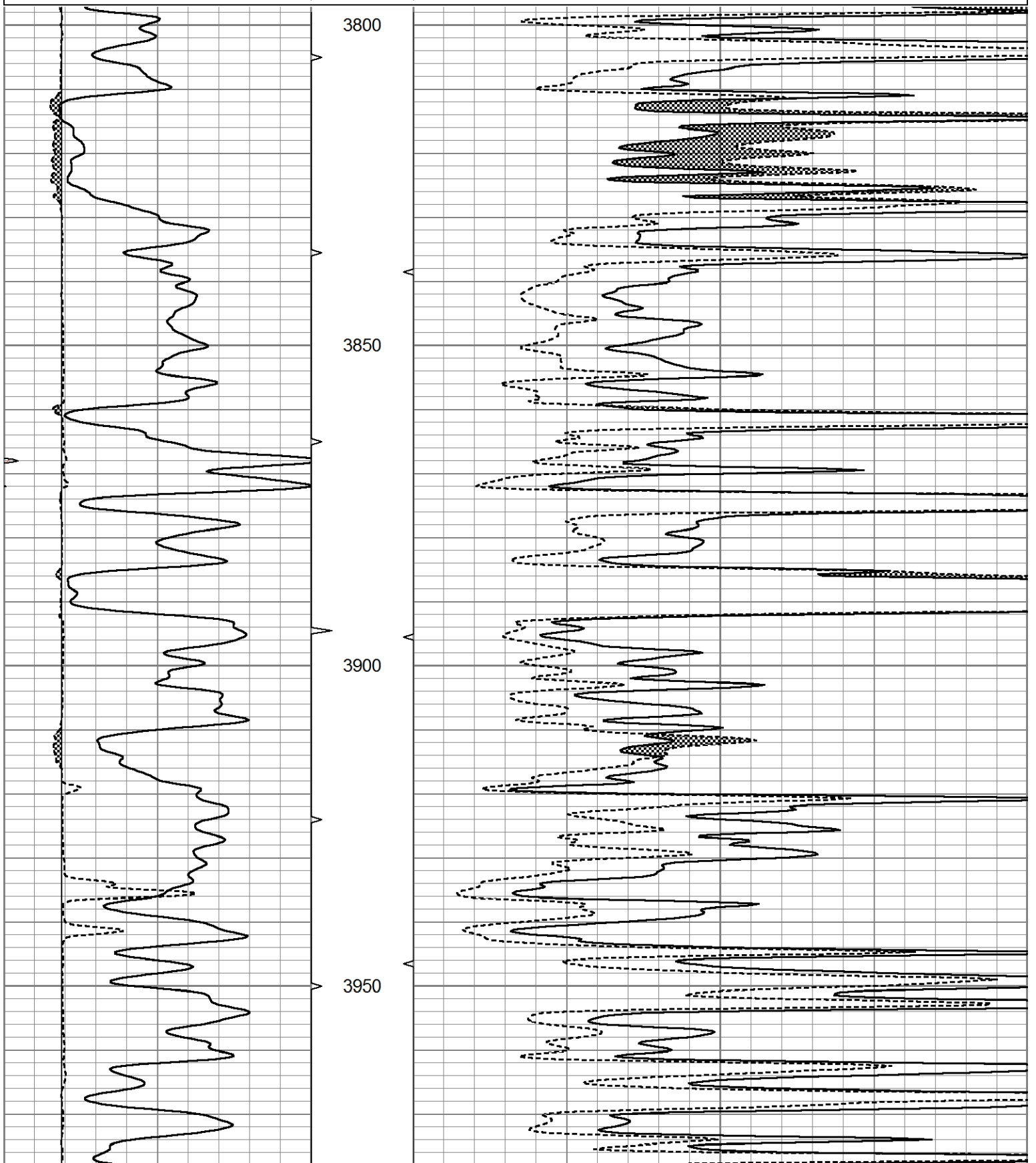
THANK YOU FOR USING ELI WIRELINE HAYS, KANSAS (785) 628-6395  
 DIRECTIONS  
 BREWSTER, KS. & I-70, N. TO COUNTY LINE, W. TO "RD. 34", 3N., E. INTO  
 NOTE: (DUE TO HOLE CONDITIONS, NO REPEAT WAS RAN)

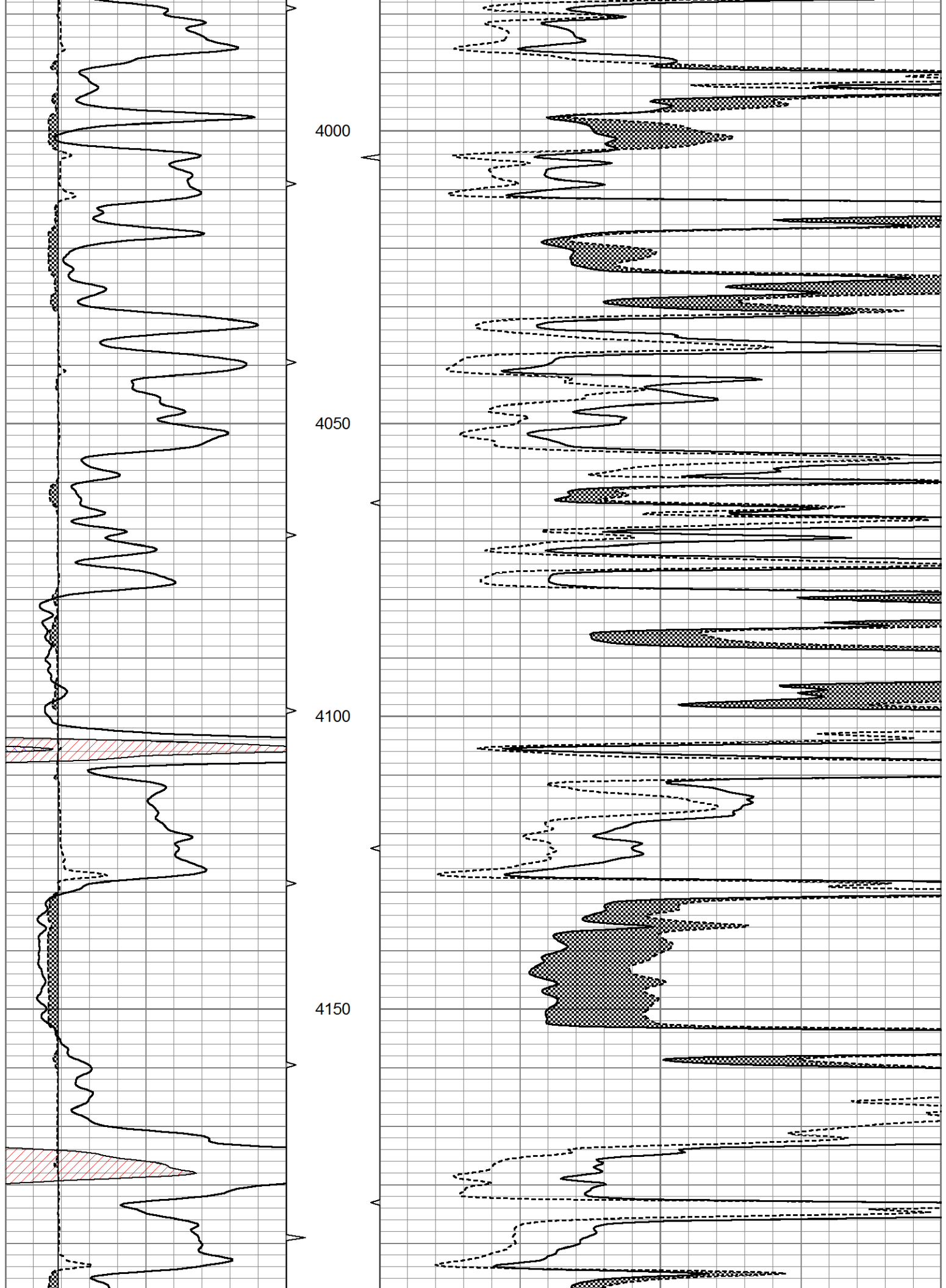


MAIN SECTION

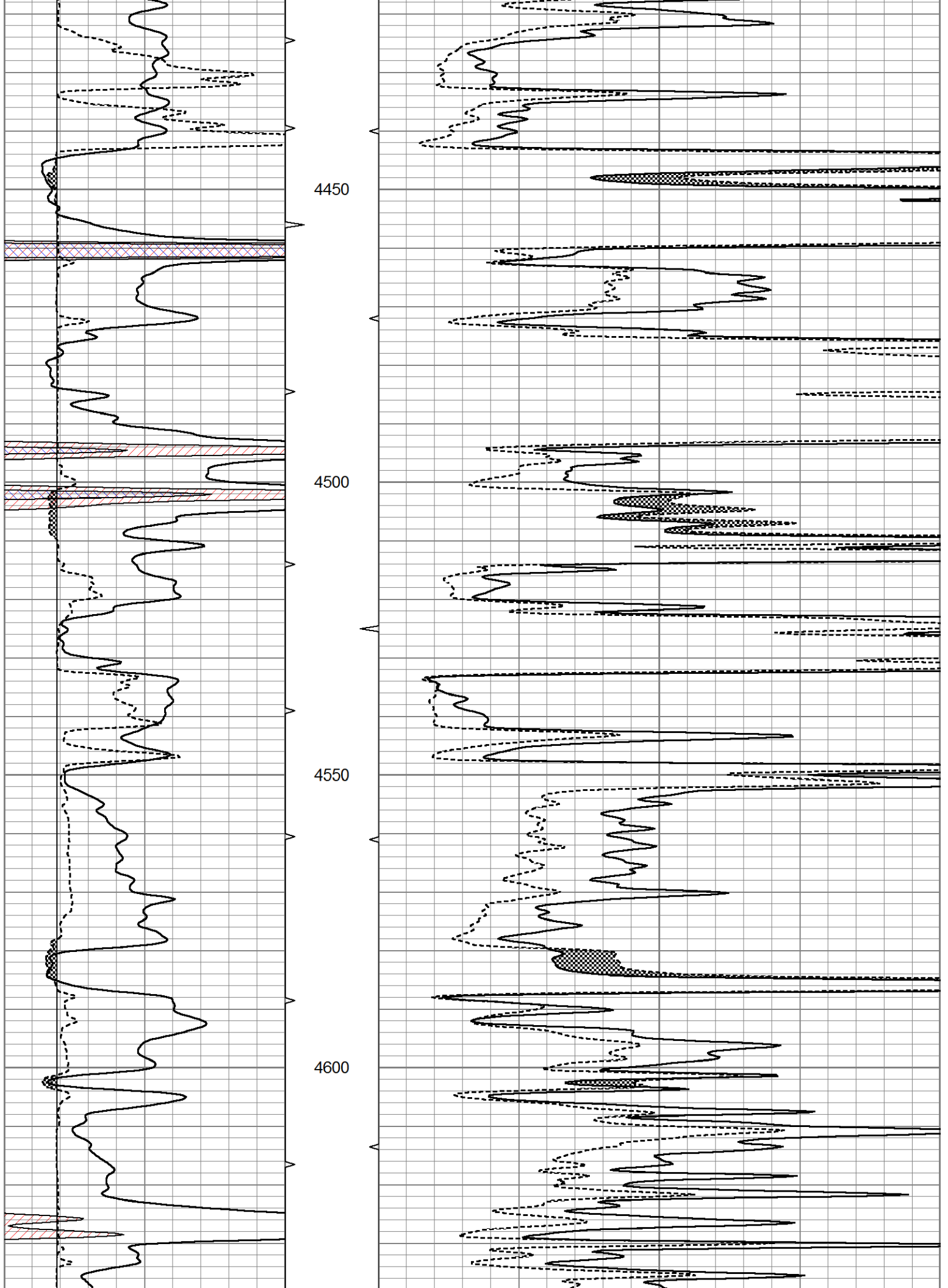
Database File 7884pe.db  
 Dataset Pathname pass6.1  
 Presentation Format micro  
 Dataset Creation Sun May 14 17:32:31 2023  
 Charted by Depth in Feet scaled 1:240

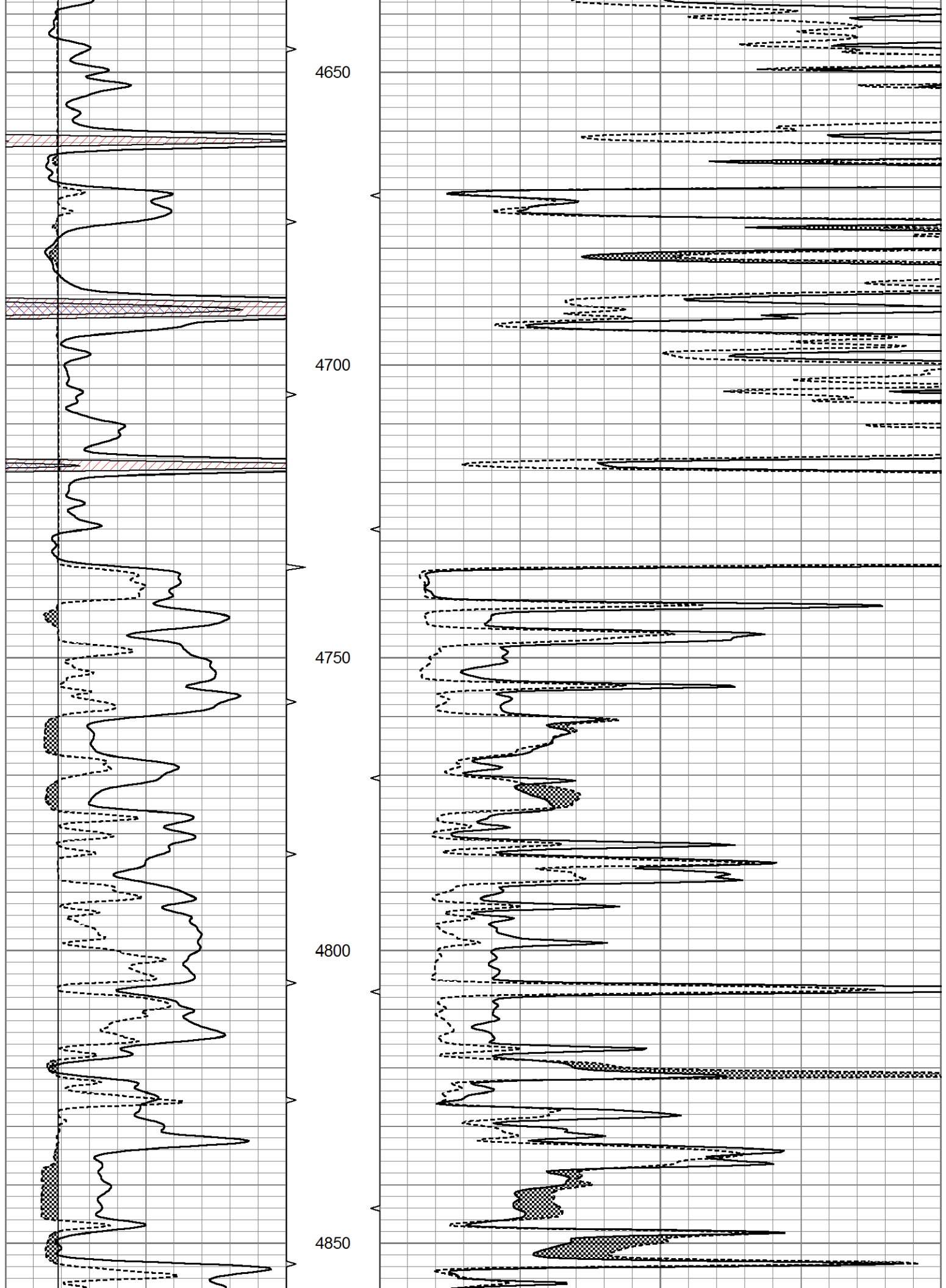
|   |             |     |          |    |               |    |
|---|-------------|-----|----------|----|---------------|----|
| 0 | GR (GAPI)   | 150 | ABHV     | 0  | MEL20 (Ohm-m) | 40 |
| 6 | MELCAL (in) | 16  | 10 (ft3) | 0  | MEL15 (Ohm-m) | 40 |
|   |             |     | ABHV     |    |               |    |
|   |             |     | 0 (ft3)  | 10 |               |    |

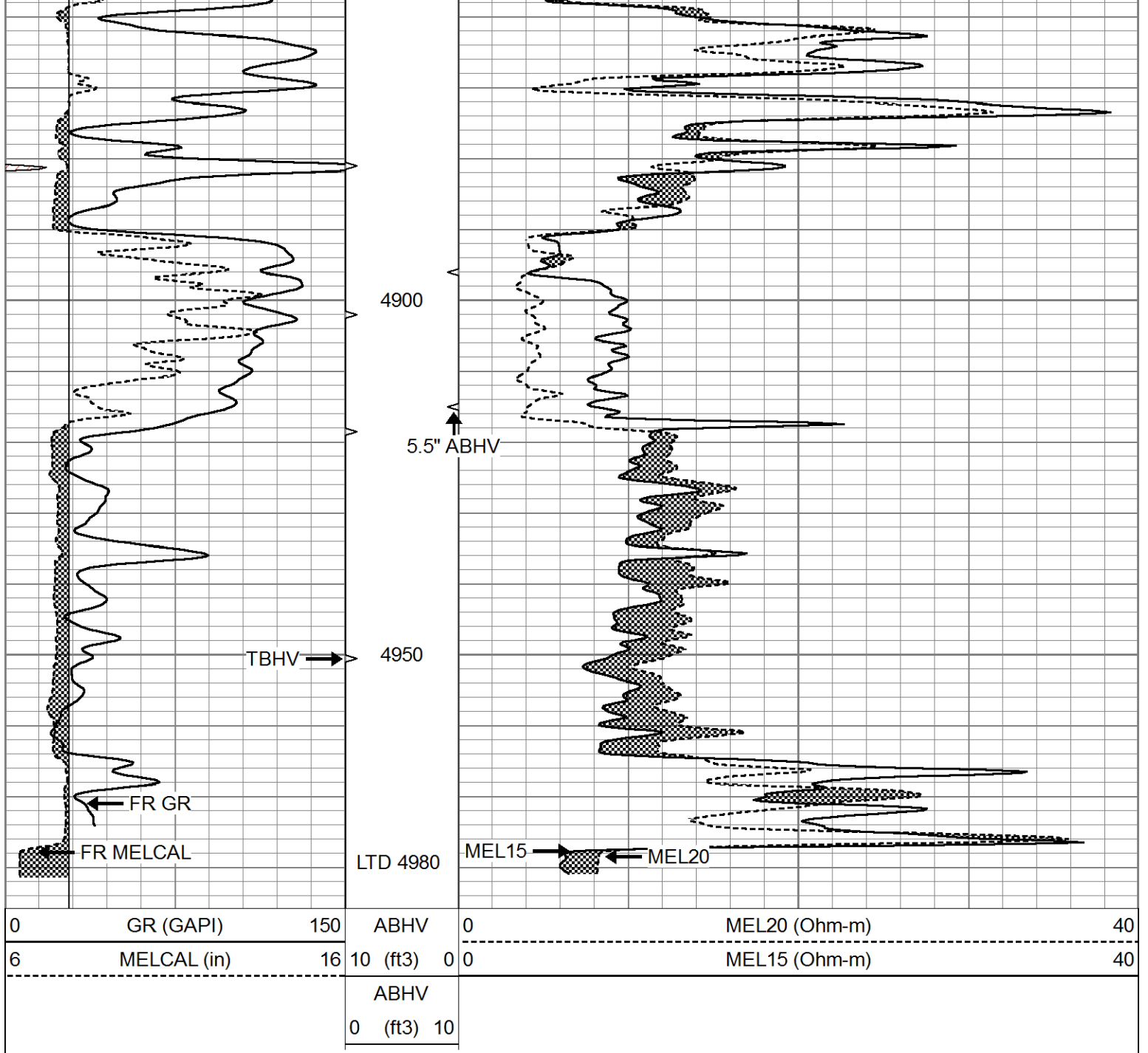












### Calibration Report

Database File 7884pe.db  
 Dataset Pathname pass6.1  
 Dataset Creation Sun May 14 17:32:31 2023

### MICRO Calibration Report

Serial Number: 070912  
 Tool Model: ProbeN  
 Performed: Tue May 09 09:11:38 2023

Caliper Calibration: Gain=3.774 Offset=-0.226

References Low Cal 8.000 High Cal 16.000  
 Readings 2.180 4.300

1.5" Calibration: Gain=44.000 Offset=-2.000

Low Cal High Cal

|            |       |        |
|------------|-------|--------|
| References | 0.000 | 20.000 |
| Readings   | 0.002 | 1.239  |

|                 |             |               |
|-----------------|-------------|---------------|
| 2" Calibration: | Gain=55.000 | Offset=-0.500 |
|                 | Low Cal     | High Cal      |
| References      | 0.000       | 20.000        |
| Readings        | 0.003       | 1.075         |

Gamma Ray Calibration Report

|                |                          |  |
|----------------|--------------------------|--|
| Serial Number: | 070559                   |  |
| Tool Model:    | OPEN_GR                  |  |
| Performed:     | Sun May 14 16:49:25 2023 |  |

|                   |     |      |
|-------------------|-----|------|
| Calibrator Value: | 1.0 | GAPI |
|-------------------|-----|------|

|                     |     |     |
|---------------------|-----|-----|
| Background Reading: | 0.0 | cps |
| Calibrator Reading: | 1.0 | cps |

|              |        |          |
|--------------|--------|----------|
| Sensitivity: | 0.3000 | GAPI/cps |
|--------------|--------|----------|