



**DUAL RECEIVER
CEMENT BOND
LOG**

Company ARCADIAN RESOURCES, LLC.
 Well LYNN #12-1
 Field
 County RAWLINS
 State KANSAS
 Country USA

Company ARCADIAN RESOURCES, LLC.
 Well LYNN #12-1
 Field
 County RAWLINS
 State KANSAS
 Country USA

Location: API #: 15-153-21615-00-00
 1550' FNL & 1090' FWL
 NE - NE - SW - NW
 SEC 3 TWP 5S RGE 37W
 Permanent Datum GROUND LEVEL Elevation 3381
 Log Measured From KELLY BUSHING 6' A.G.L.
 Drilling Measured From KELLY BUSHING
 Other Services
 Elevation
 K.B. 3387
 D.F. 3385
 G.L. 3381

Date	7/11/2023	
Run Number	ONE	TWO
Depth Driller	4980	
Depth Logger	4932	
Bottom Logged Interval	4931	1000
Top Log Interval	3900	0
Open Hole Size		
Type Fluid	WATER	
Density / Viscosity		
Max. Recorded Temp.		
Estimated Cement Top		
Time Well Ready		
Time Logger on Bottom		
Equipment Number	3362	
Location	HAYS, KANSAS	
Recorded By	DANGOTTSCHALK	
Witnessed By	BUTCH DRYLIE	
Borehole Record		
Run Number	Bit	From
ONE	12-1/4"	0
TWO	7-7/8"	355
		4980
Tubing Record		
	Size	Weight
		From
		To
Casing Record	Size	Wgt/Ft
Surface String	8-5/8"	0
Prot. String	5-1/2"	0
Production String		
Liner		

<<< Fold Here >>>

All interpretations are opinions based on inferences from electrical or other measurements and we cannot and do not guarantee the accuracy or correctness of any interpretation, and we shall not, except in the case of gross or willful negligence on our part, be liable or responsible for any loss, costs, damages, or expenses incurred or sustained by anyone resulting from any interpretation made by any of our officers, agents or employees. These interpretations are also subject to our general terms and conditions set out in our current Price Schedule.

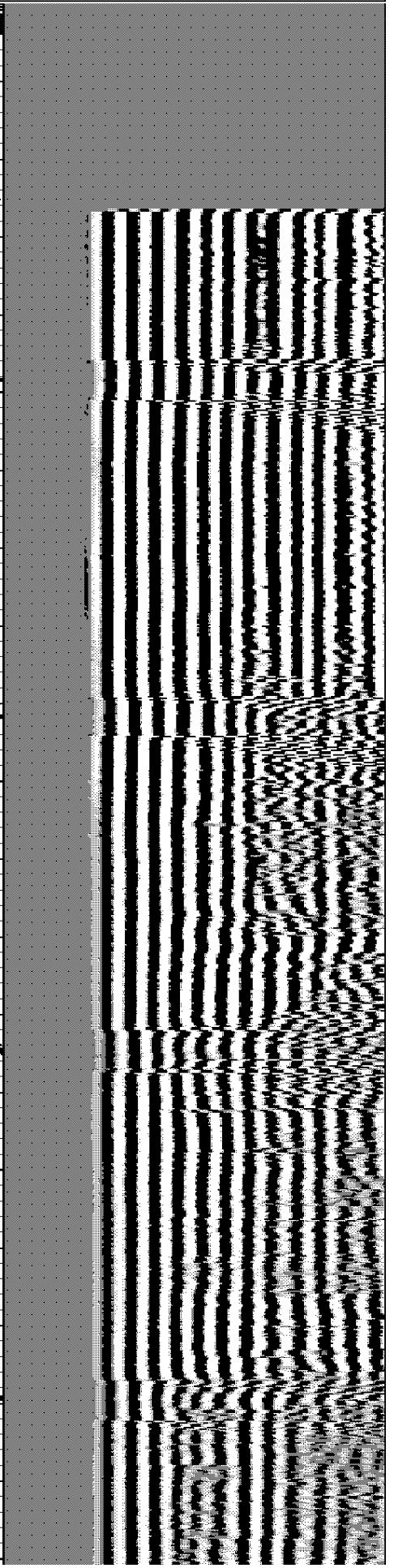
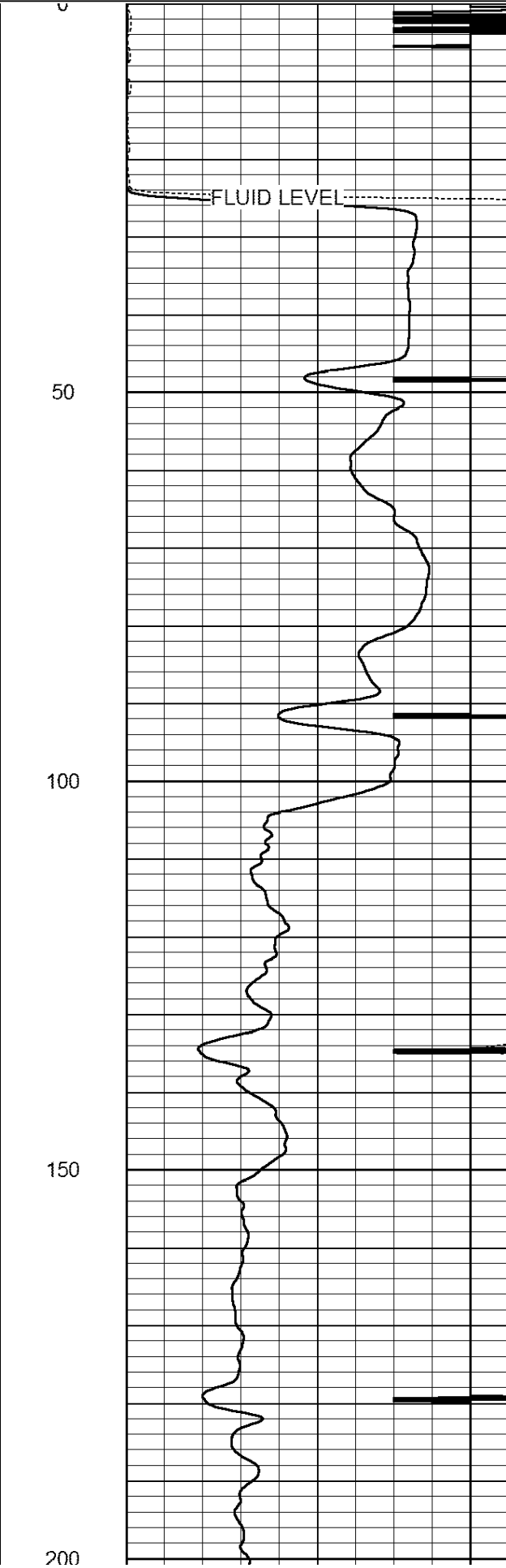
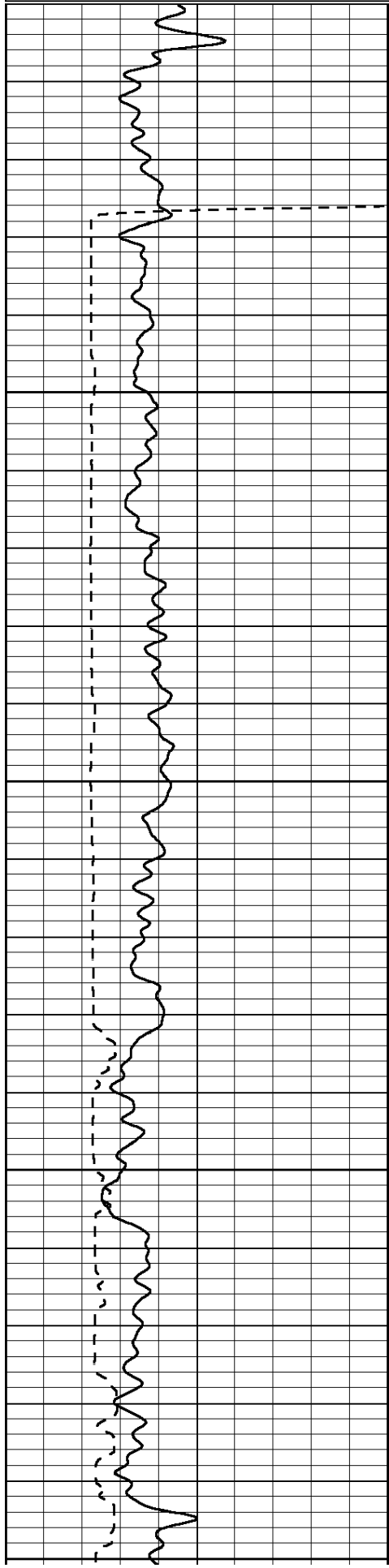
Comments

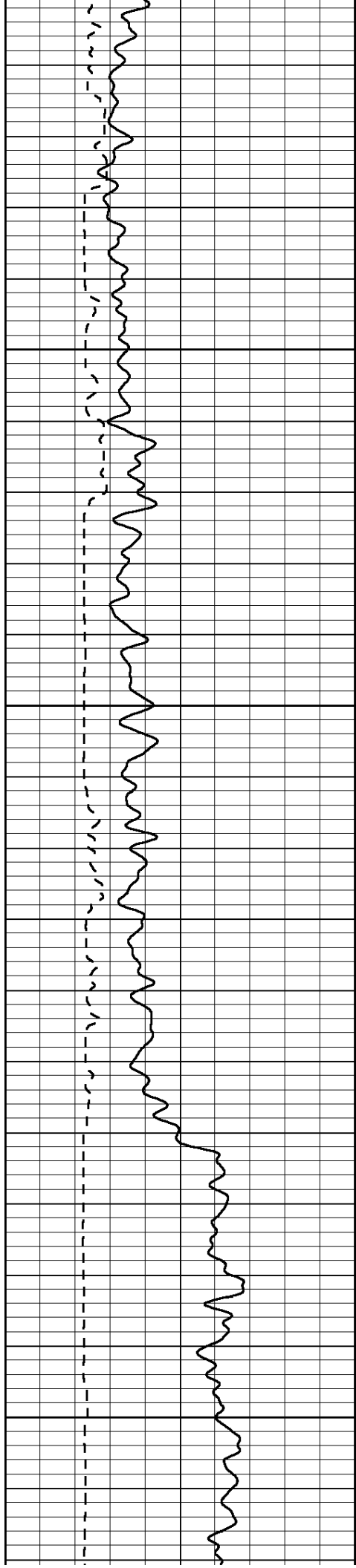
THANK YOU FOR USING ELI WIRELINE SERVICES
HAYS, KANSAS (785)628-6395
DIRECTIONS: BREWSTER - NORTH ON BLACKTOP TO COUNTY LINE -
WEST TO RD. 34 - 4 NORTH - EAST INTO

0	Gamma Ray (GAPI)	150
200	5' Travel Time (usec)	1000

0	3' Amplitude (mV)	100
9	CCL	-1
0	Amplified Amplitude (mV)	20

200	5FT VDL	1000
-----	---------	------



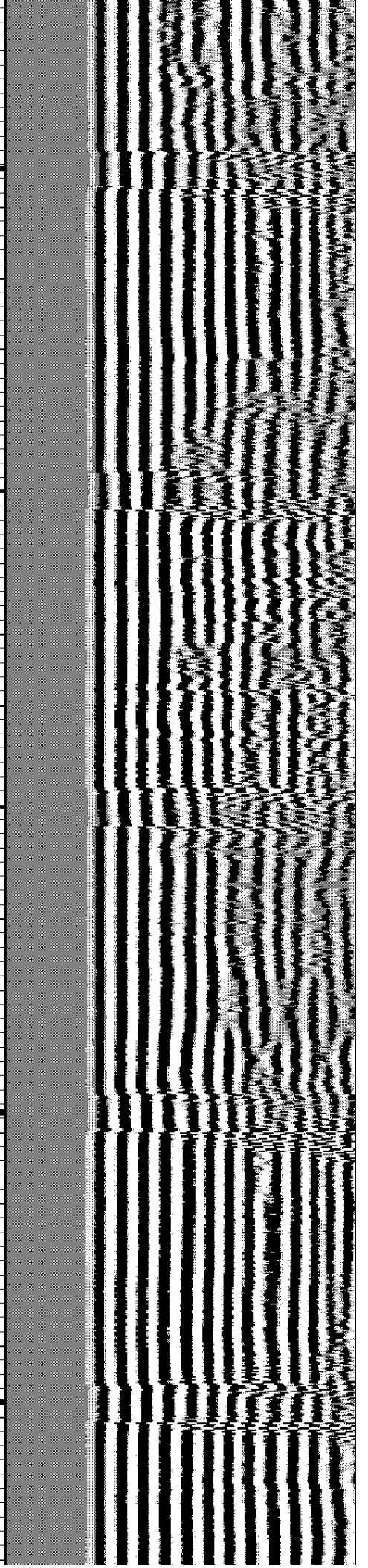
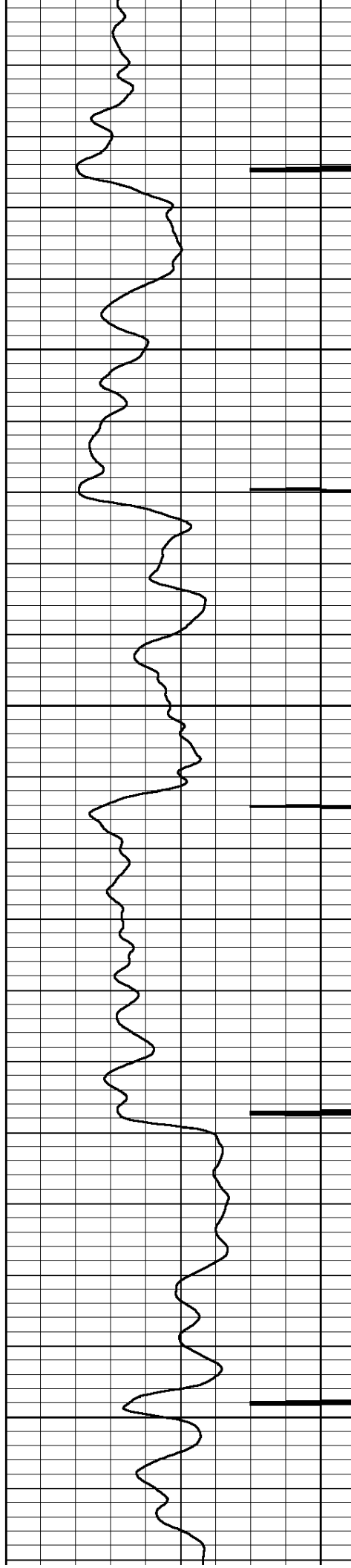


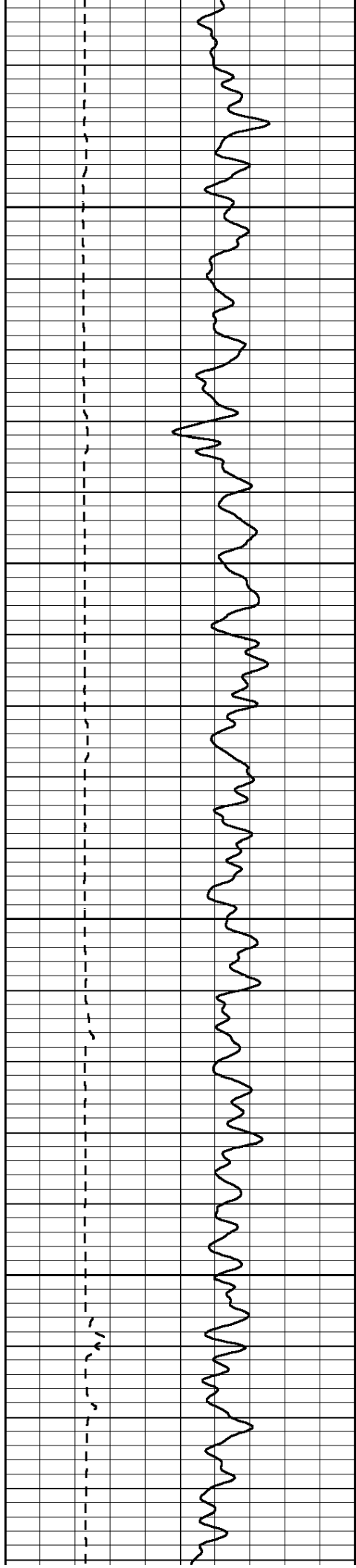
250

300

350

400



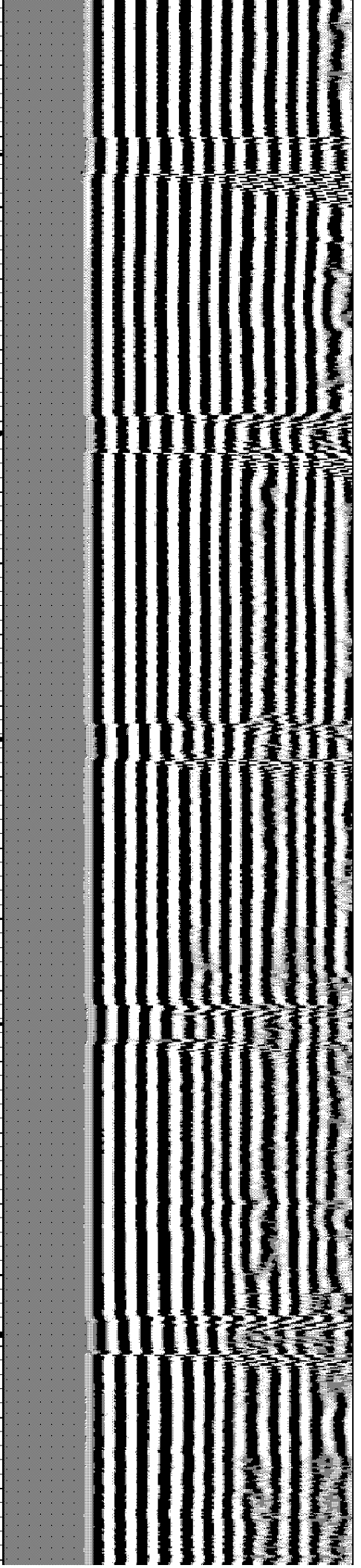
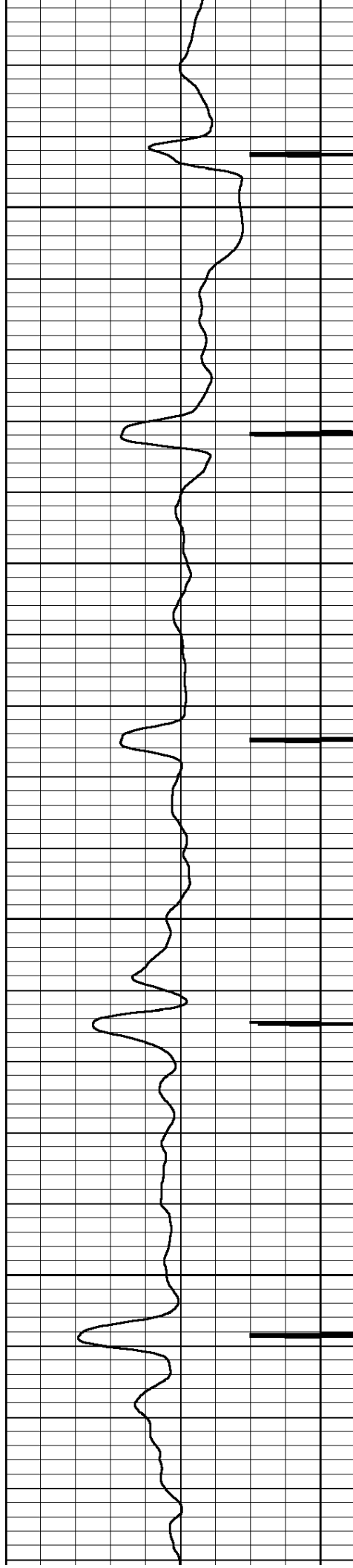


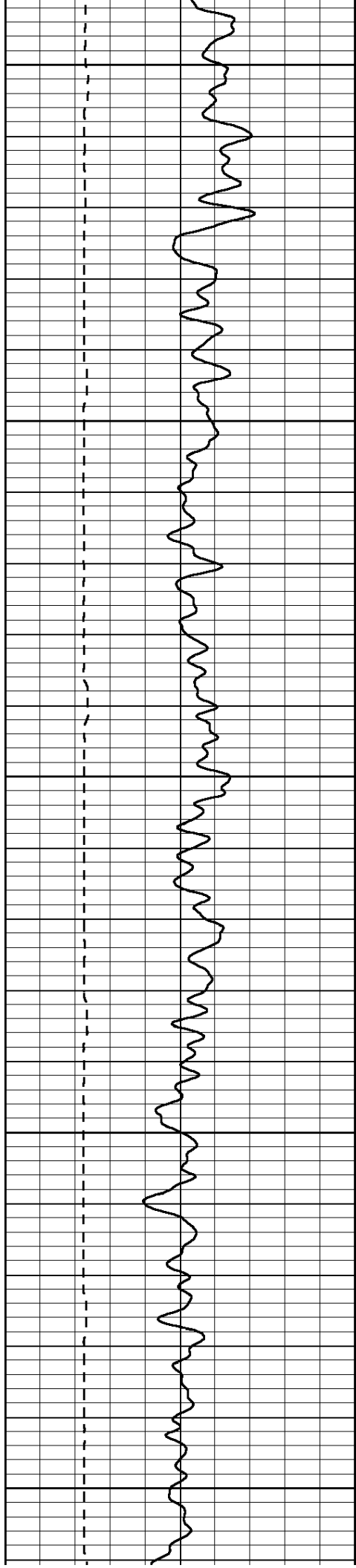
450

500

550

600





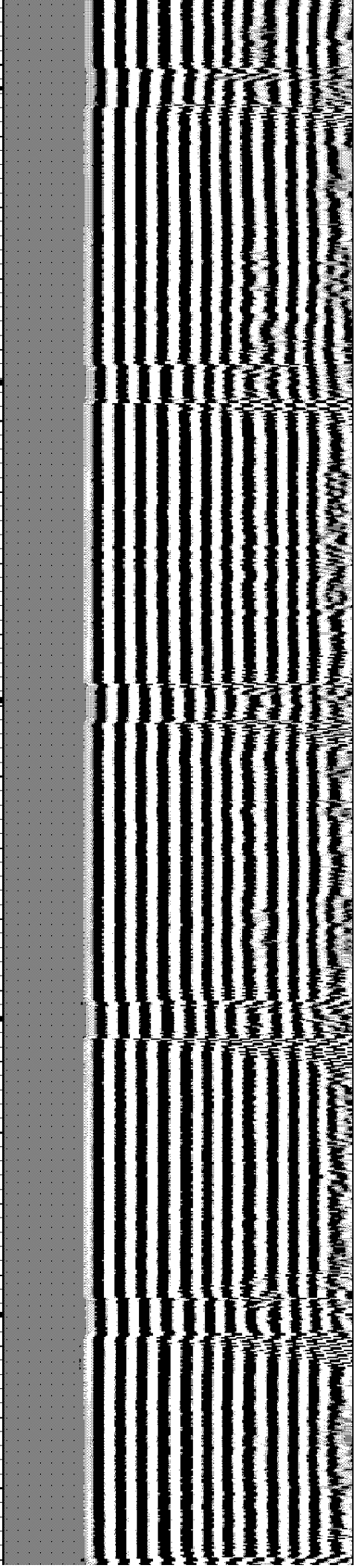
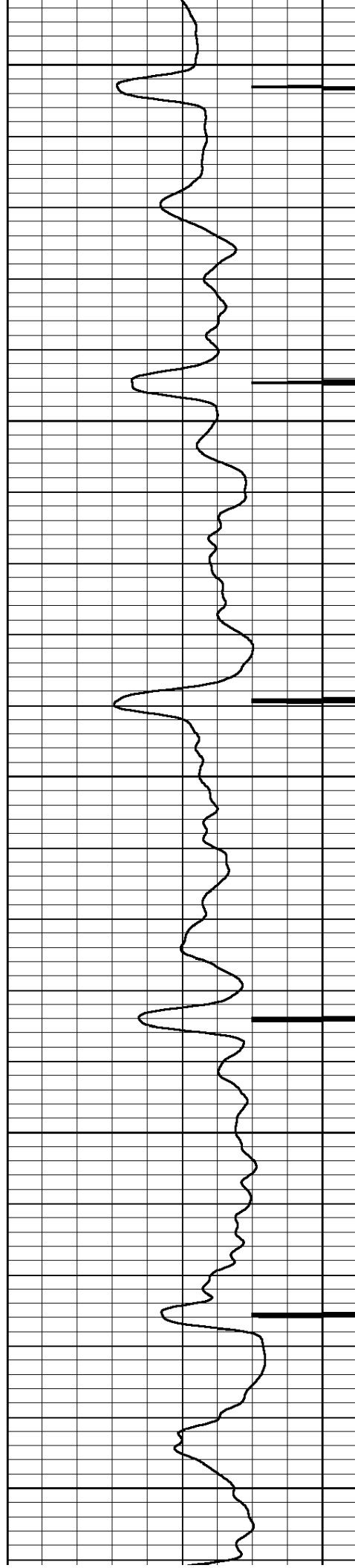
650

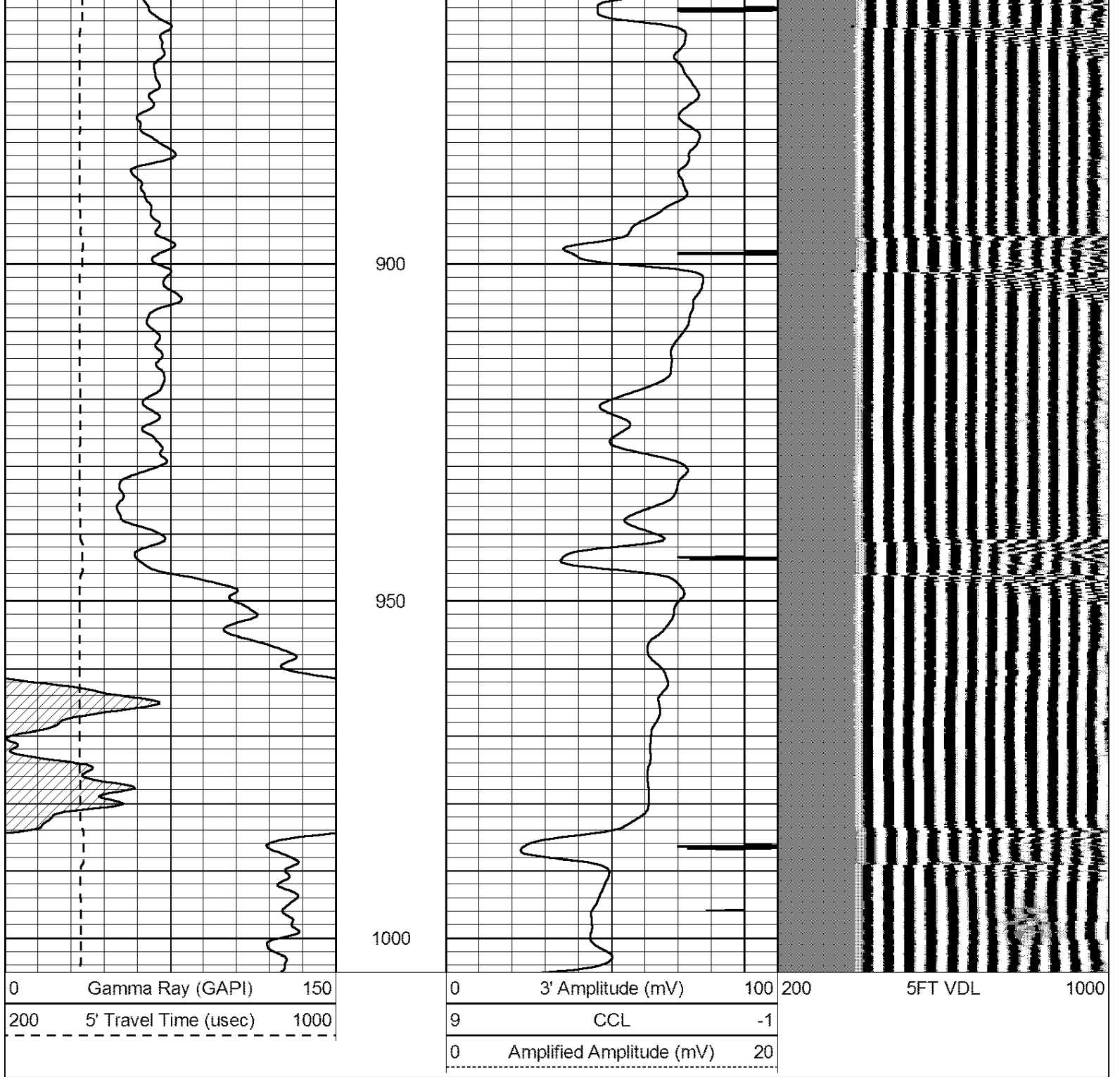
700

750

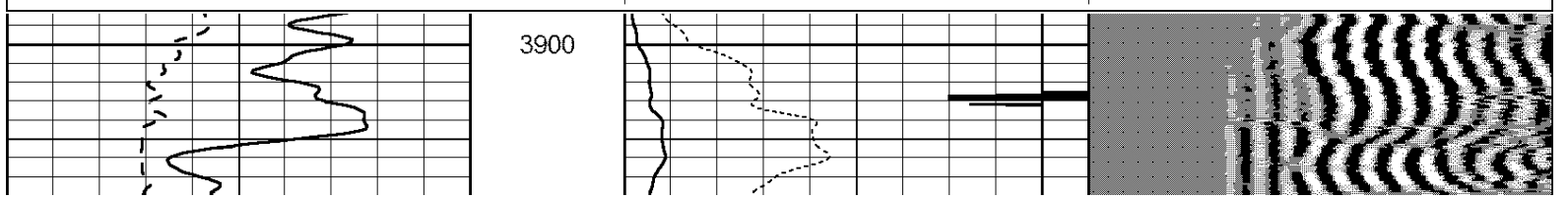
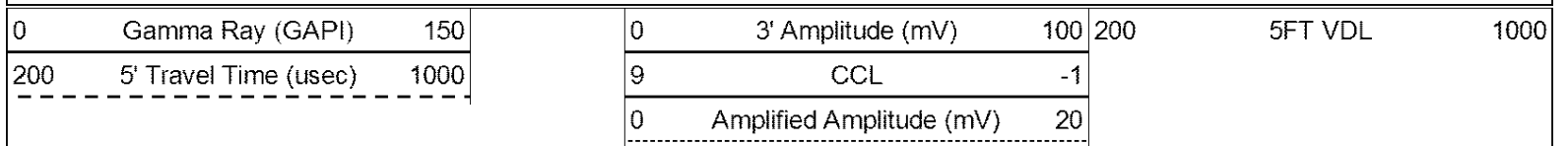
800

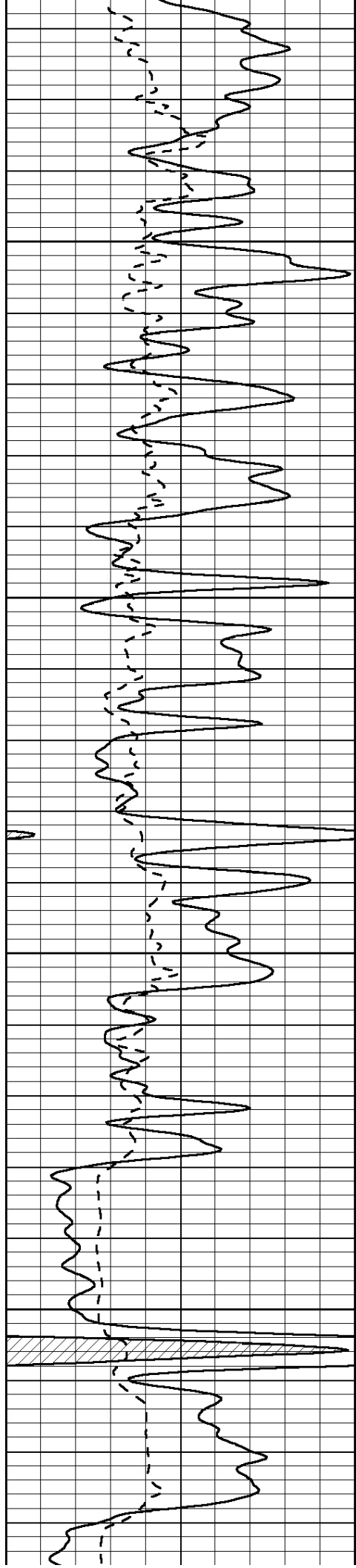
850





Database File: 7697bgr.db
 Dataset Pathname: pass3.3
 Presentation Format: dcbl02
 Dataset Creation: Tue Jul 11 09:16:04 2023 by Calc 7.0 B1
 Charted by: Depth in Feet scaled 1:240



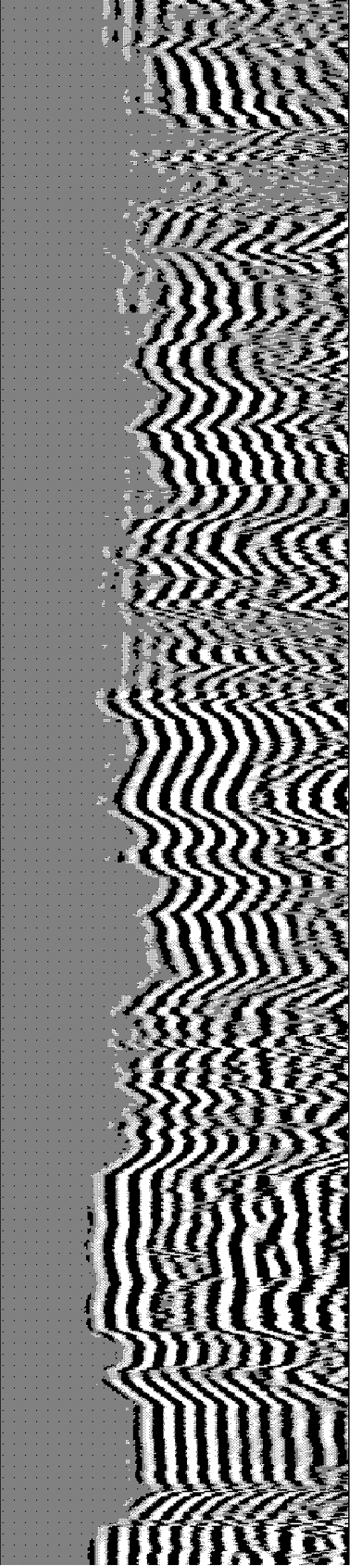
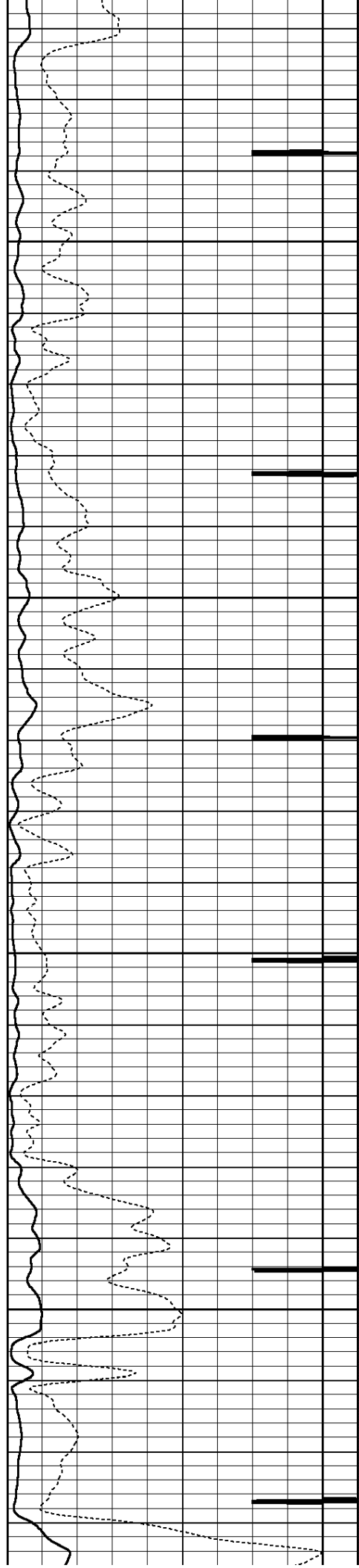


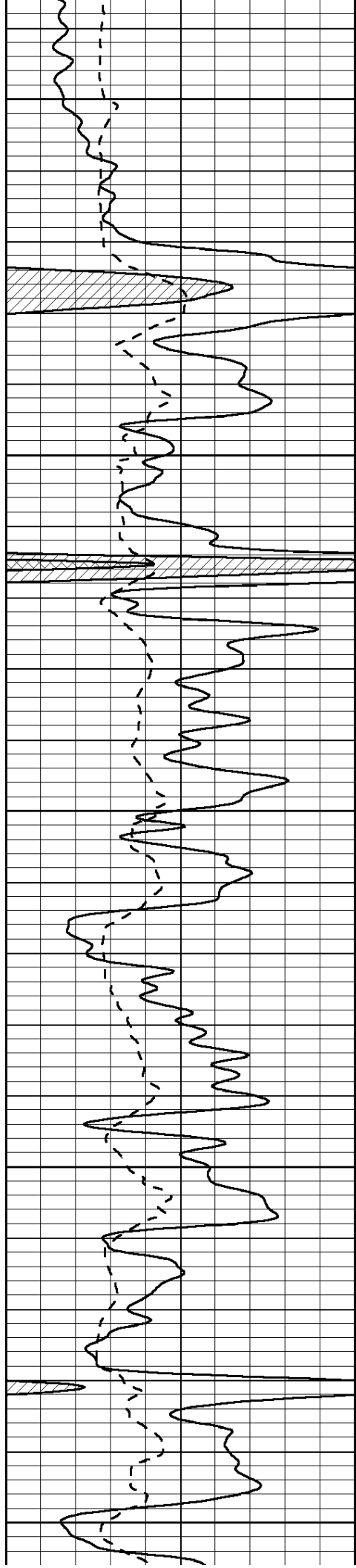
3950

4000

4050

4100





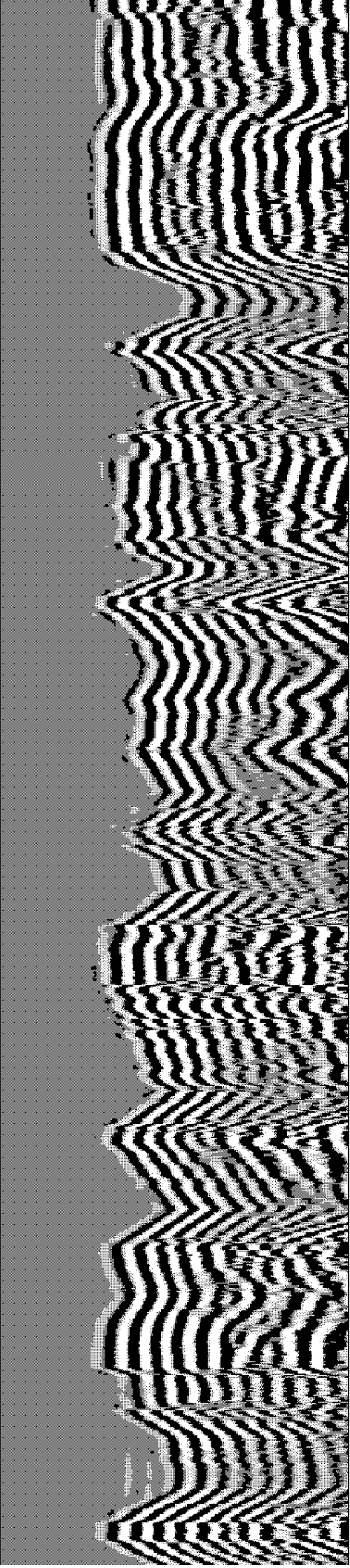
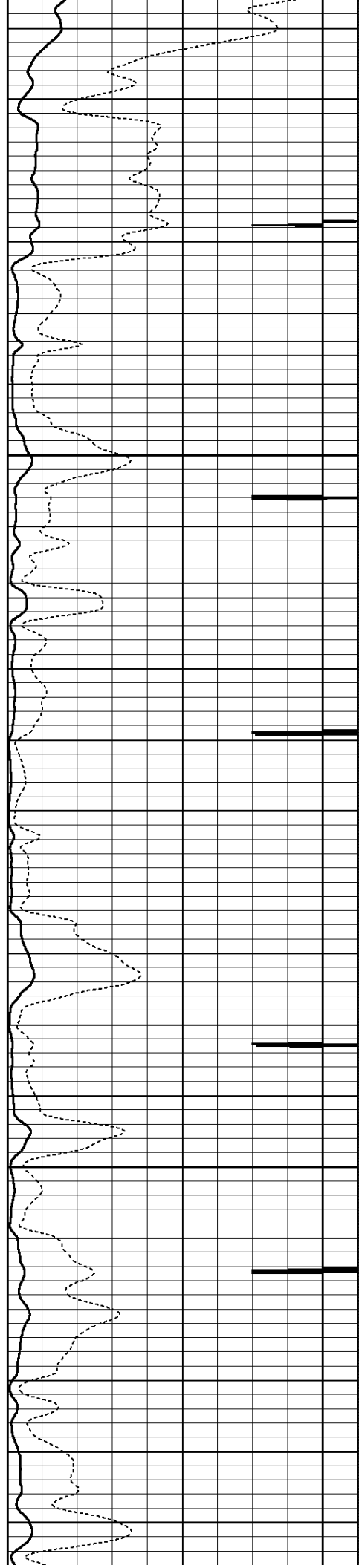
4150

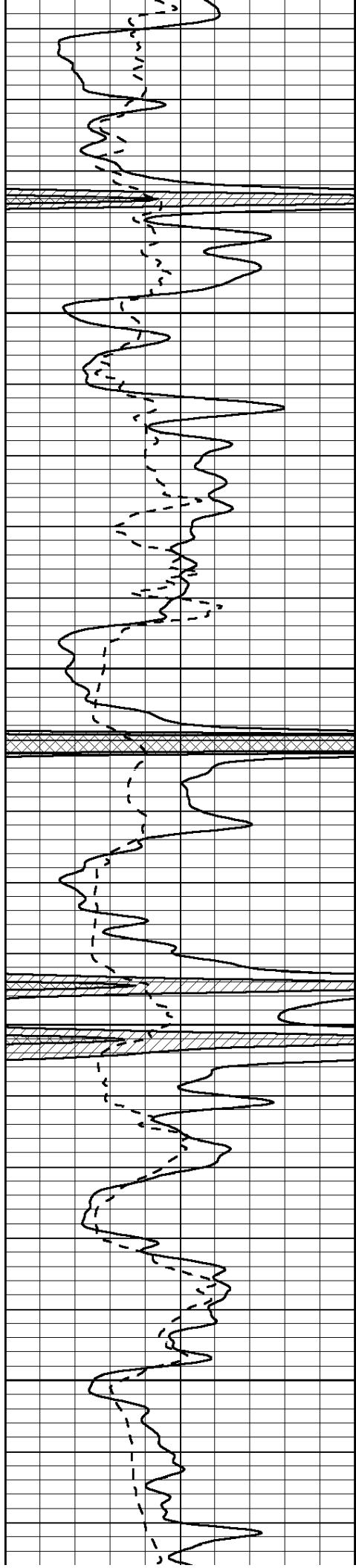
4200

4250

4300

4350



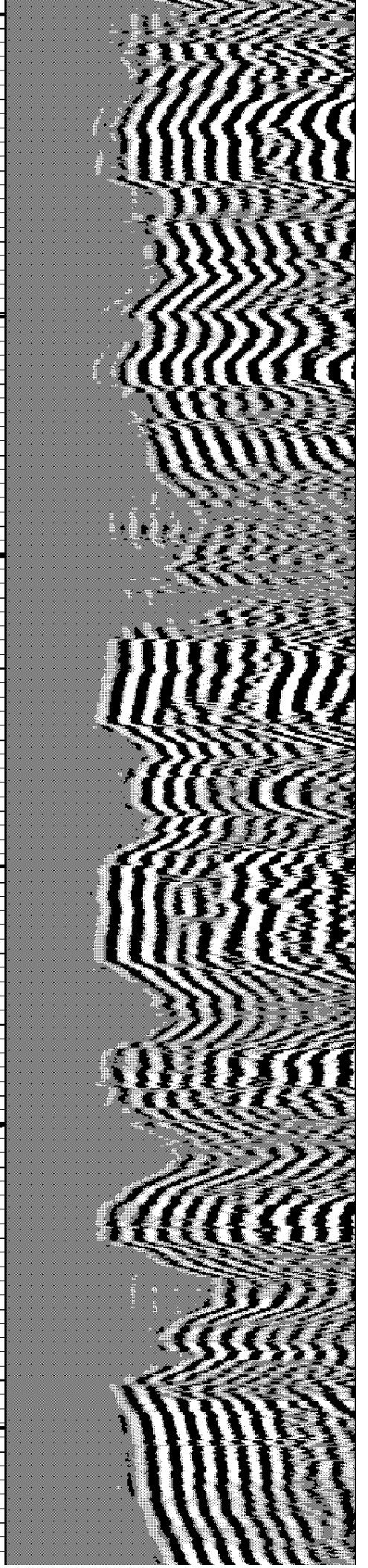
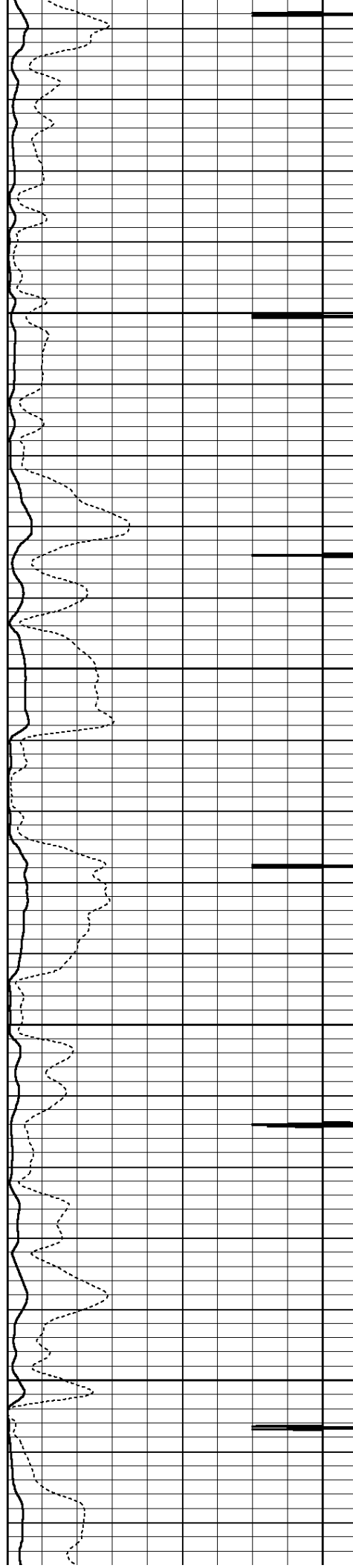


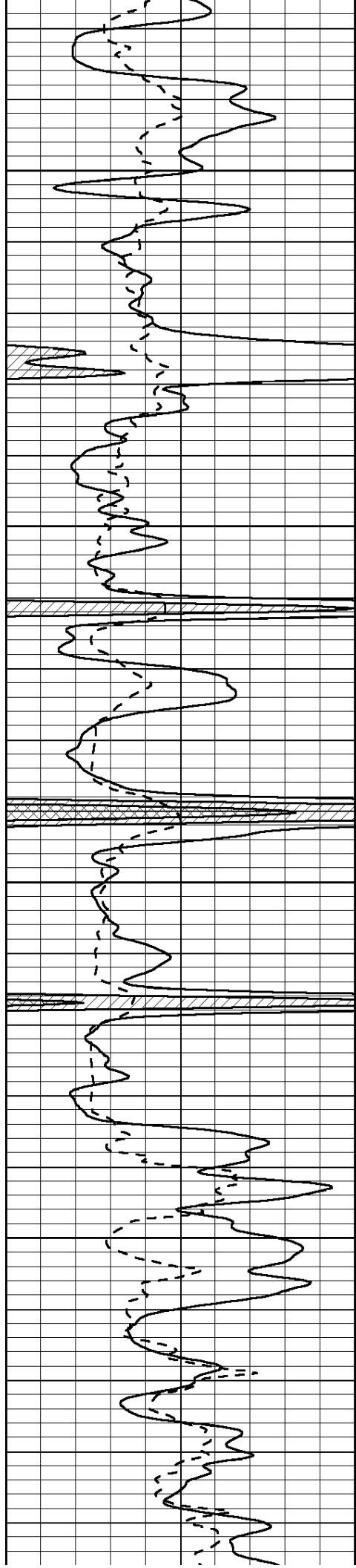
4400

4450

4500

4550





4600

4650

4700

4750

