



# DUAL INDUCTION LOG

Company ARCADIAN RESOURCES, LLC.

Well LYNN #12-1

Field UNNAMED

County CHEYENNE State KANSAS

Company ARCADIAN RESOURCES, LLC.  
Well LYNN #12-1  
Field UNNAMED  
County CHEYENNE  
State KANSAS

Location: AP1 #: 15-023-21615-0000  
1550' FNL & 1090' FWL  
NE - NE - SW - NW

SEC 12 TWP 5S RGE 37W

Permanent Datum GROUND LEVEL Elevation 3381  
Log Measured From KELLY BUSHING 6' A.G.L.  
Drilling Measured From KELLY BUSHING

Other Services  
CDL/CNL/PE  
MEL  
Elevation  
K.B. 3387  
D.F. 3385  
G.L. 3381

Date	5/14/23
Run Number	ONE
Depth Driller	4980
Depth Logger	4980
Bottom Logged Interval	4978
Top Log Interval	00
Casing Driller	8 5/8"@355'
Casing Logger	355
Bit Size	7 7/8"
Type Fluid in Hole	CHEMICAL MUD
Density / Viscosity	9.4/57
pH / Fluid Loss	9.5/8.0
Source of Sample	FLOWLINE
Rm @ Meas. Temp	1.60@74F
Rmf @ Meas. Temp	1.20@74F
Rmc @ Meas. Temp	1.92@74F
Source of Rmf / Rmc	MEASUREMENT
Rm @ BHT	.947@125F
Time Circulation Stopped	3 HOURS
Time Logger on Bottom	2:30 P.M.
Maximum Recorded Temperature	125F
Equipment Number	922339
Location	HAYS, KANSAS
Recorded By	JEFF LUEBBERS
Witnessed By	SEAN DEENIHAN

<<< Fold Here >>>

All interpretations are opinions based on inferences from electrical or other measurements and we cannot and do not guarantee the accuracy or correctness of any interpretation, and we shall not, except in the case of gross or willful negligence on our part, be liable or responsible for any loss, costs, damages, or expenses incurred or sustained by anyone resulting from any interpretation made by any of our officers, agents or employees. These interpretations are also subject to our general terms and conditions set out in our current Price Schedule.

15-023-21615-0000

Comments

THANK YOU FOR USING ELI WIRELINE HAYS, KANSAS (785) 628-6395  
DIRECTIONS  
BREWSTER, KS. & I-70, N. TO COUNTY LINE, W. TO "RD. 34", 3N., E. INTO  
NOTE: (DUE TO HOLE CONDITIONS, NO REPEAT WAS RAN)

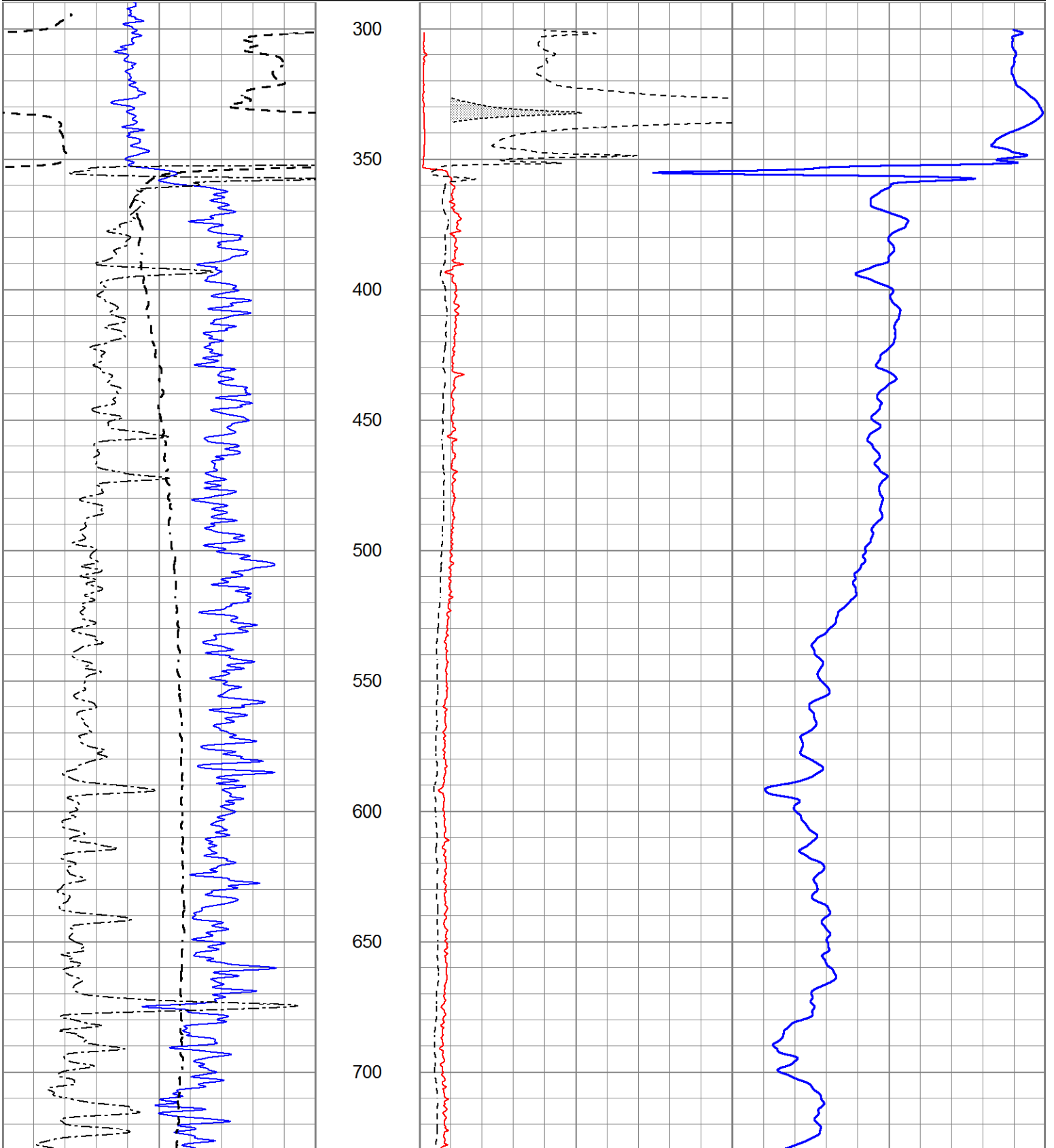


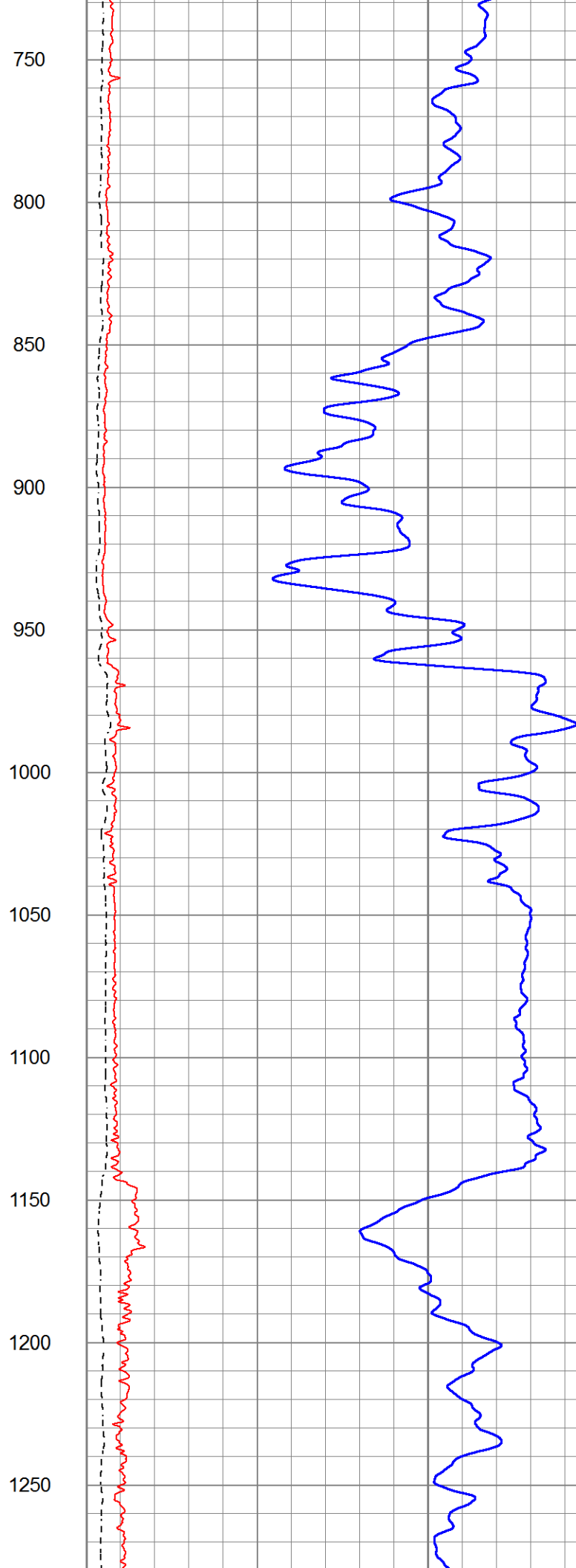
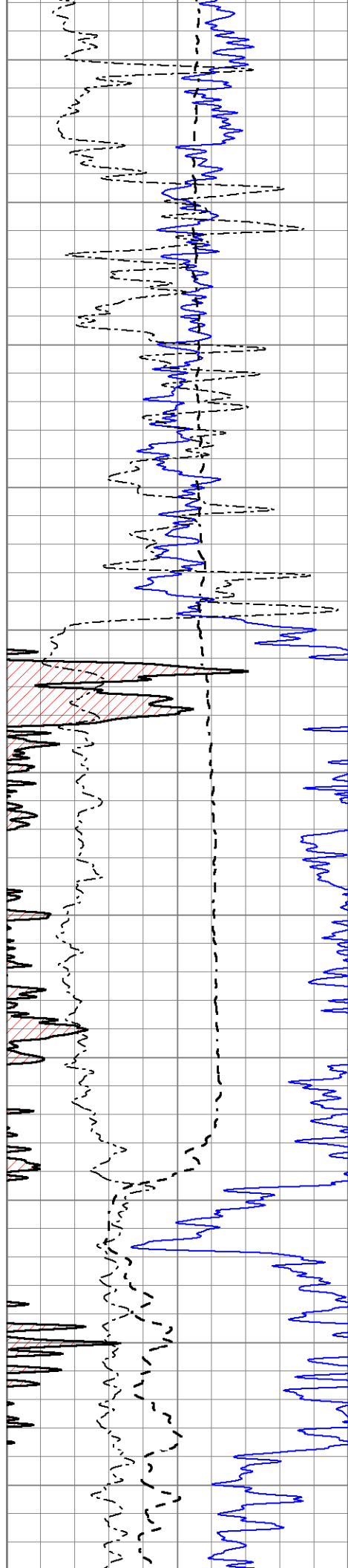
# MAIN SECTION

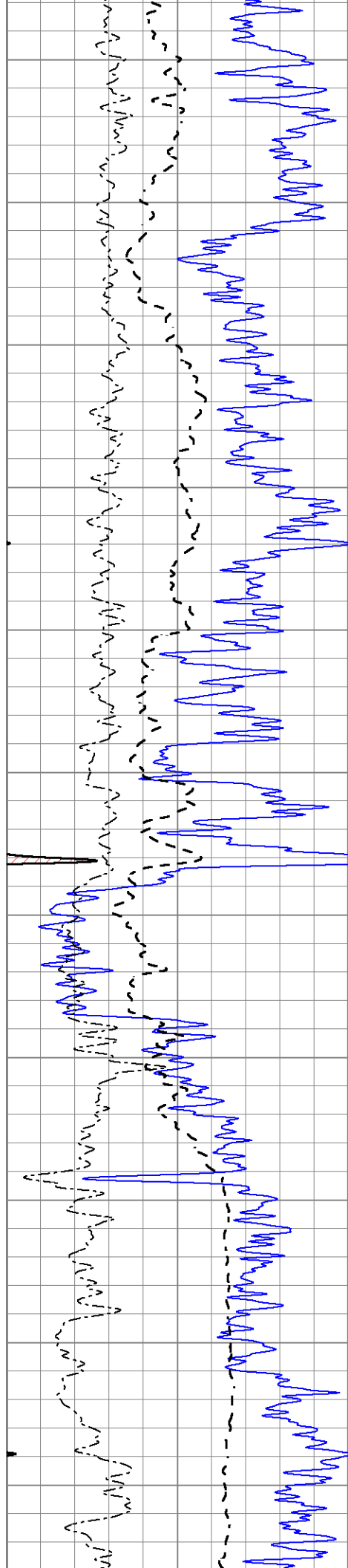
Database File 7884pe.db  
 Dataset Pathname pass4.1M  
 Presentation Format \_dil2  
 Dataset Creation Sun May 14 16:23:25 2023  
 Charted by Depth in Feet scaled 1:600

0	Gamma Ray (GAPI)	150
-100	SP (mV)	100
0	RWA (Ohm-m)	1

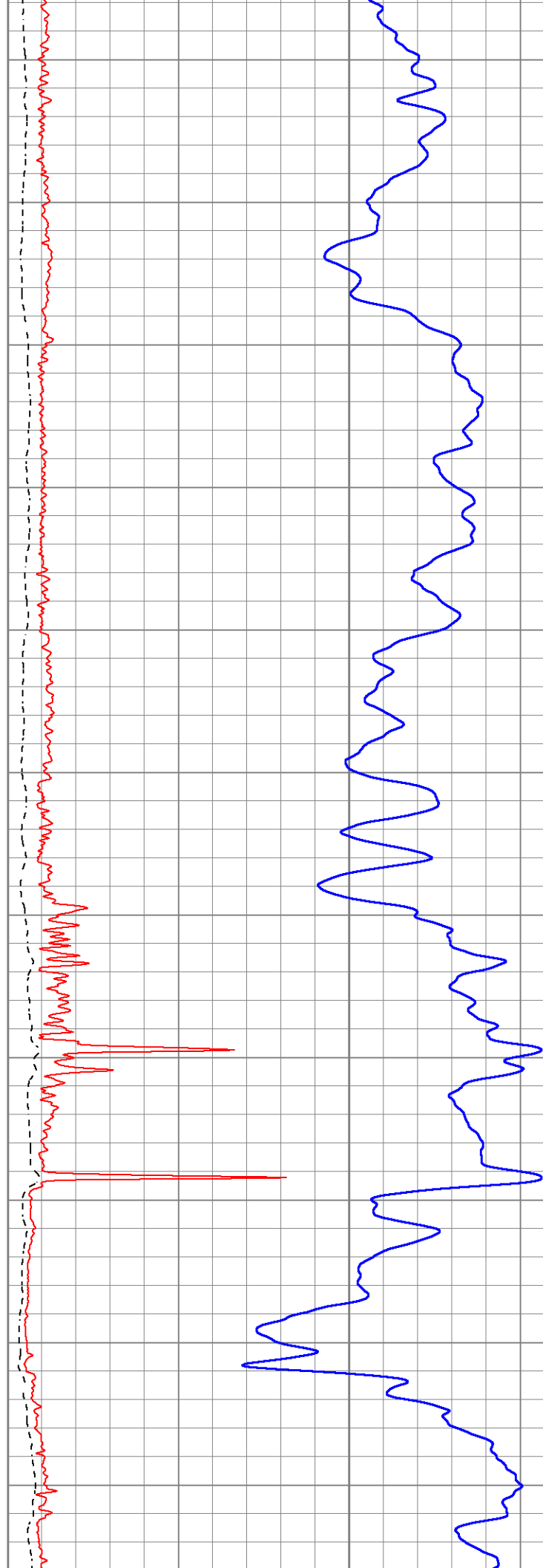
1000	CILD (mmho/m)	0
0	RLL3 (Ohm-m)	50
0	RILD (Ohm-m)	50
50	RILD X10 (Ohm-m)	500
50	RLL3 X10 (Ohm-m)	500

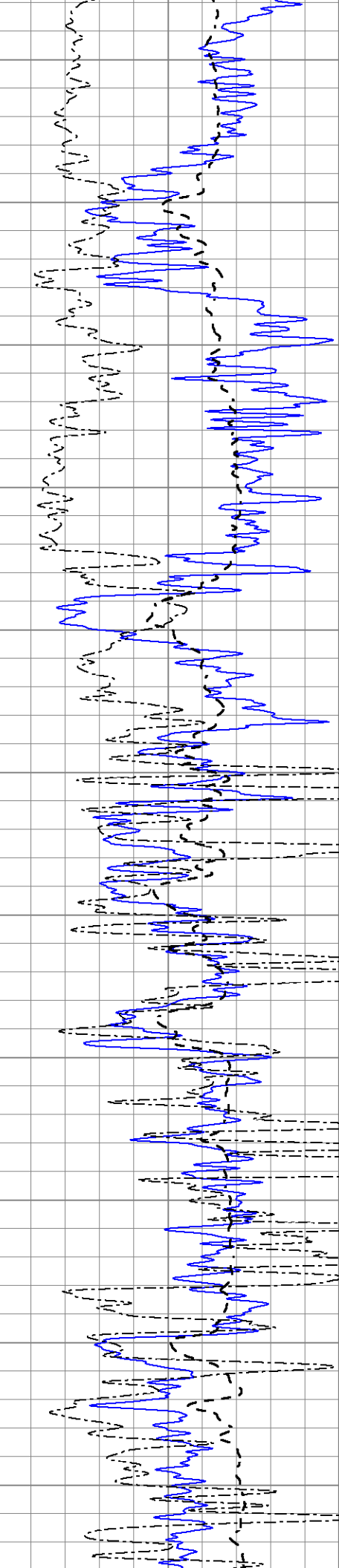






1300  
1350  
1400  
1450  
1500  
1550  
1600  
1650  
1700  
1750  
1800





1850

1900

1950

2000

2050

2100

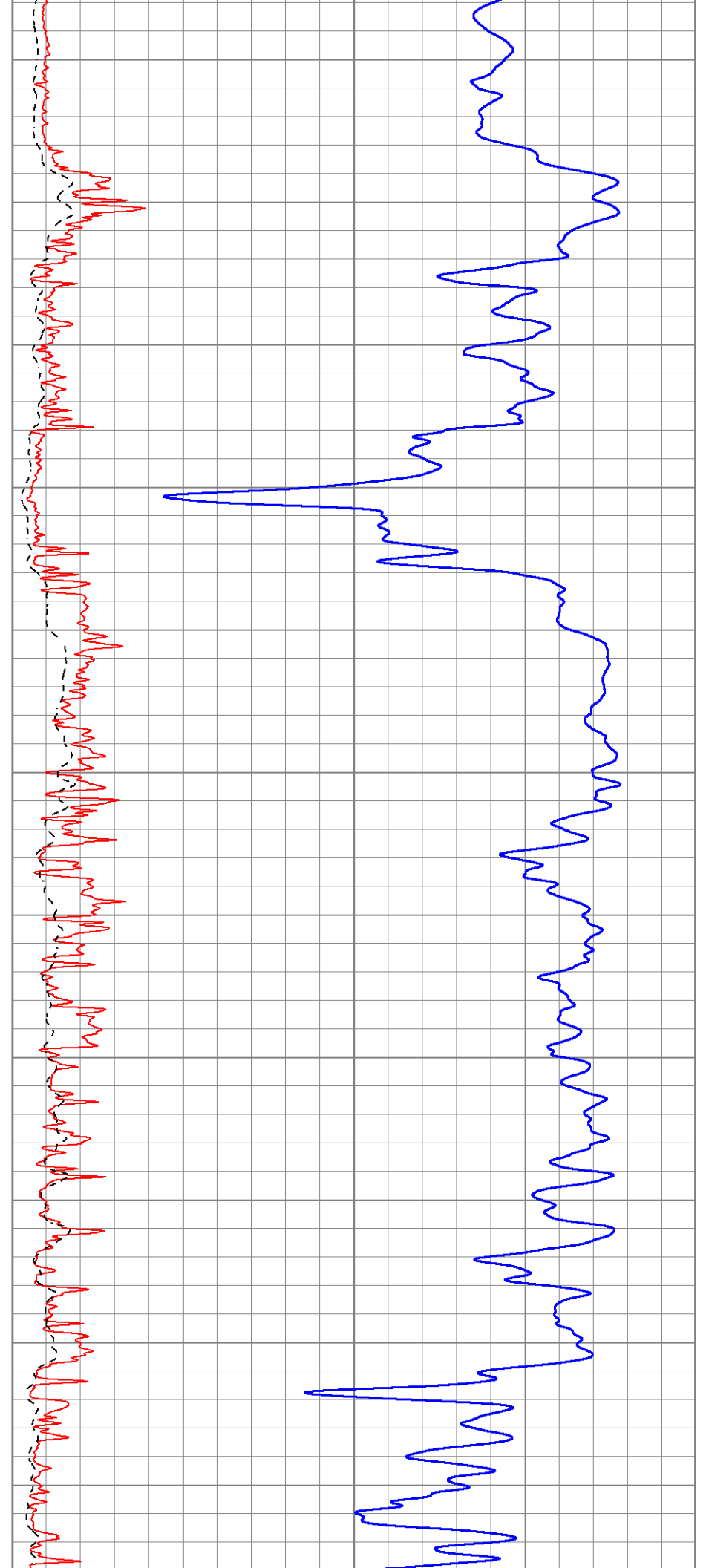
2150

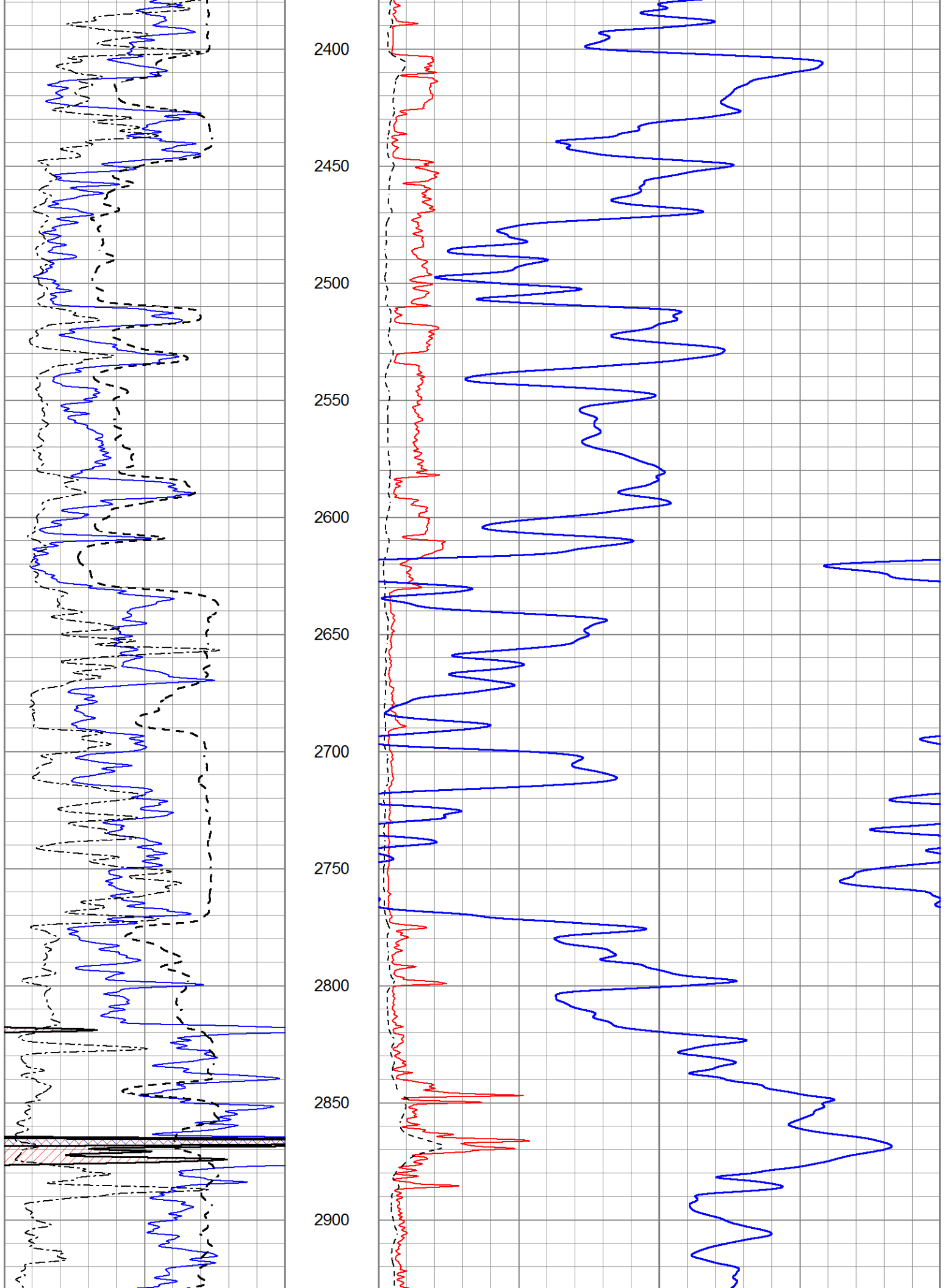
2200

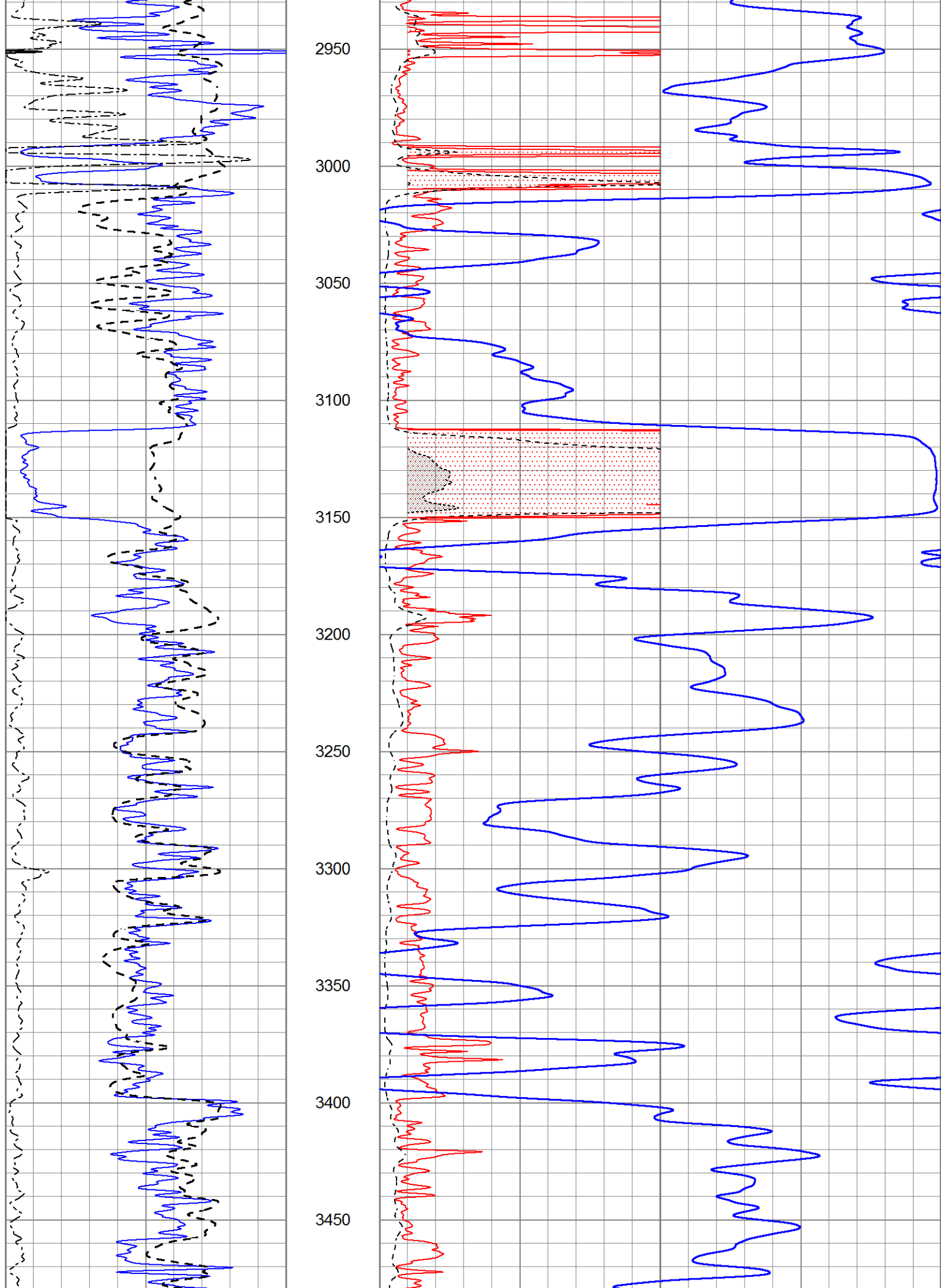
2250

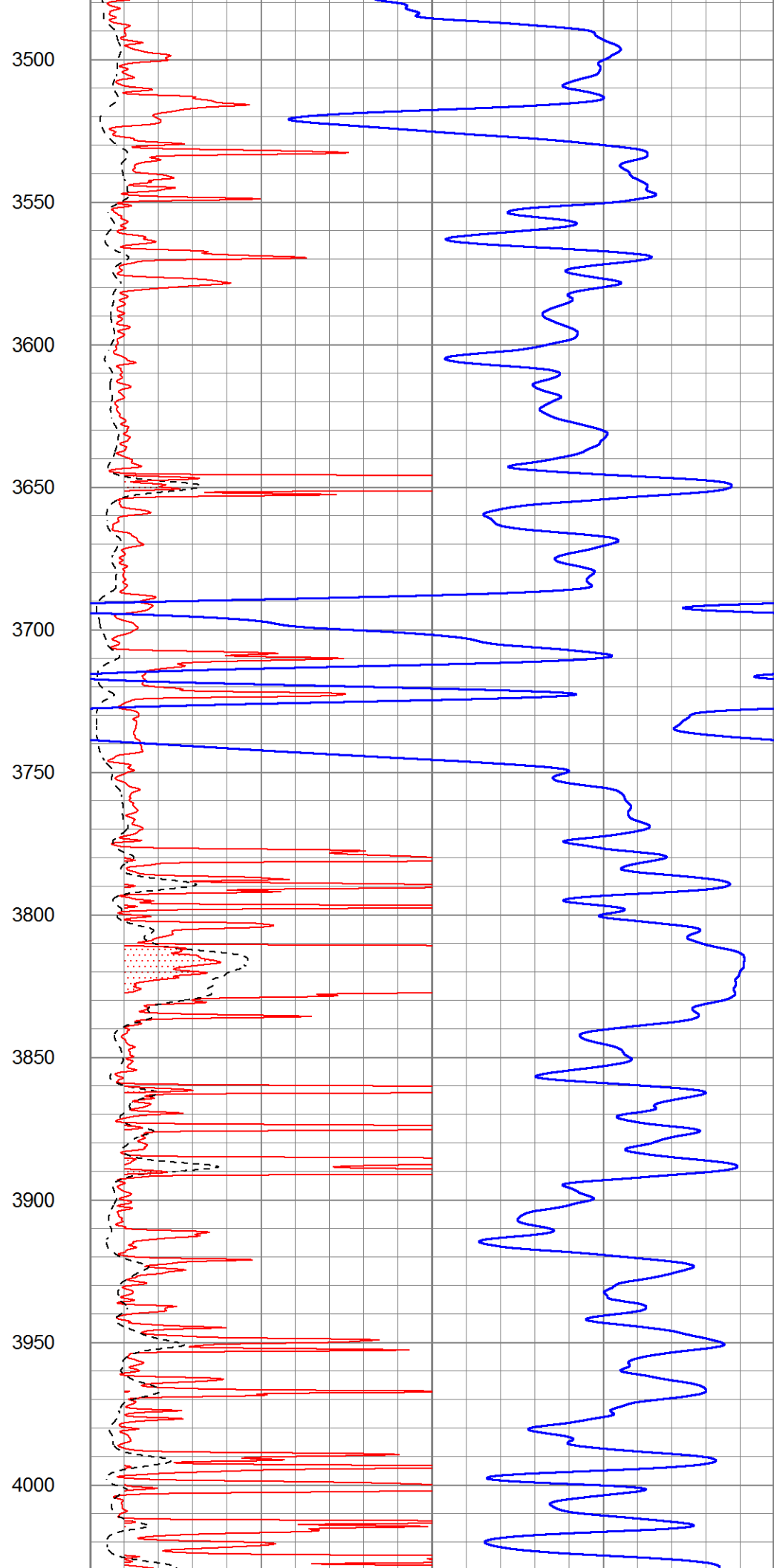
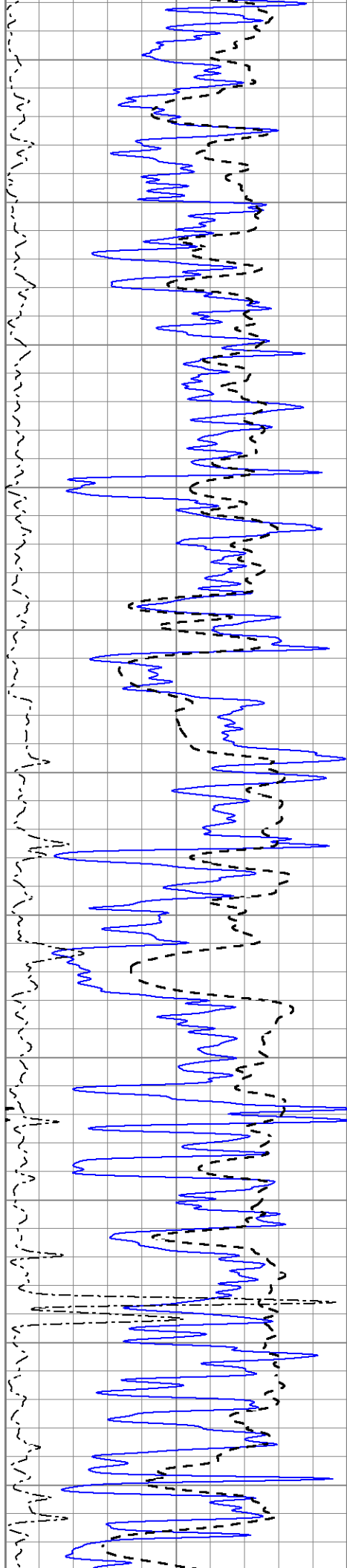
2300

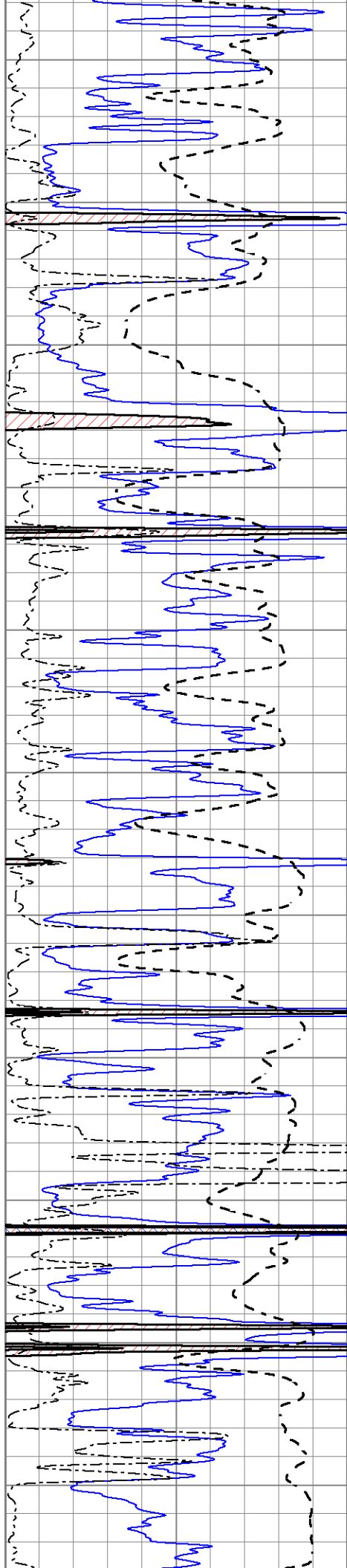
2350











4050

4100

4150

4200

4250

4300

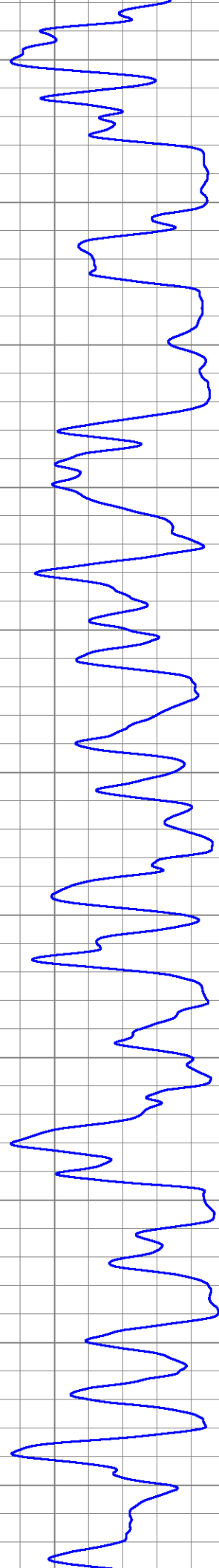
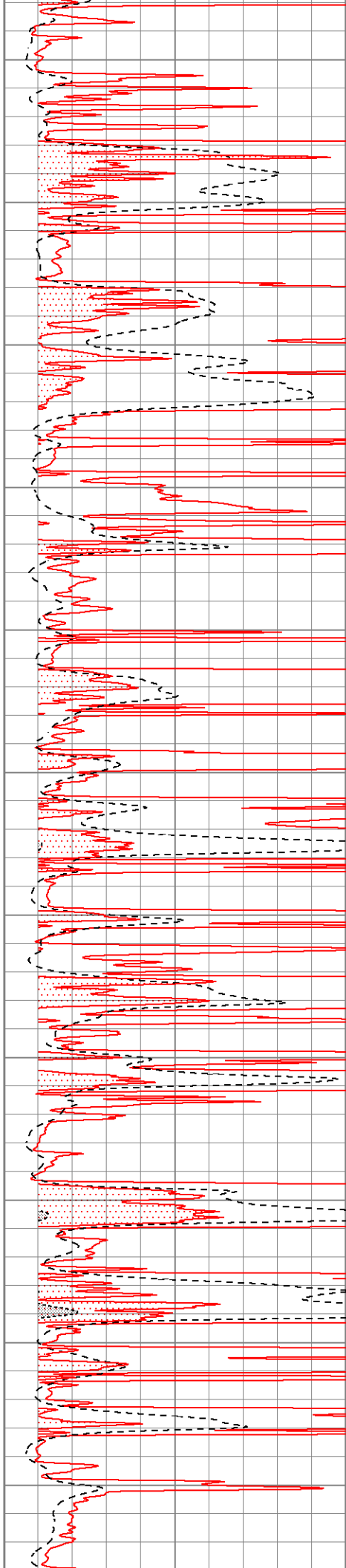
4350

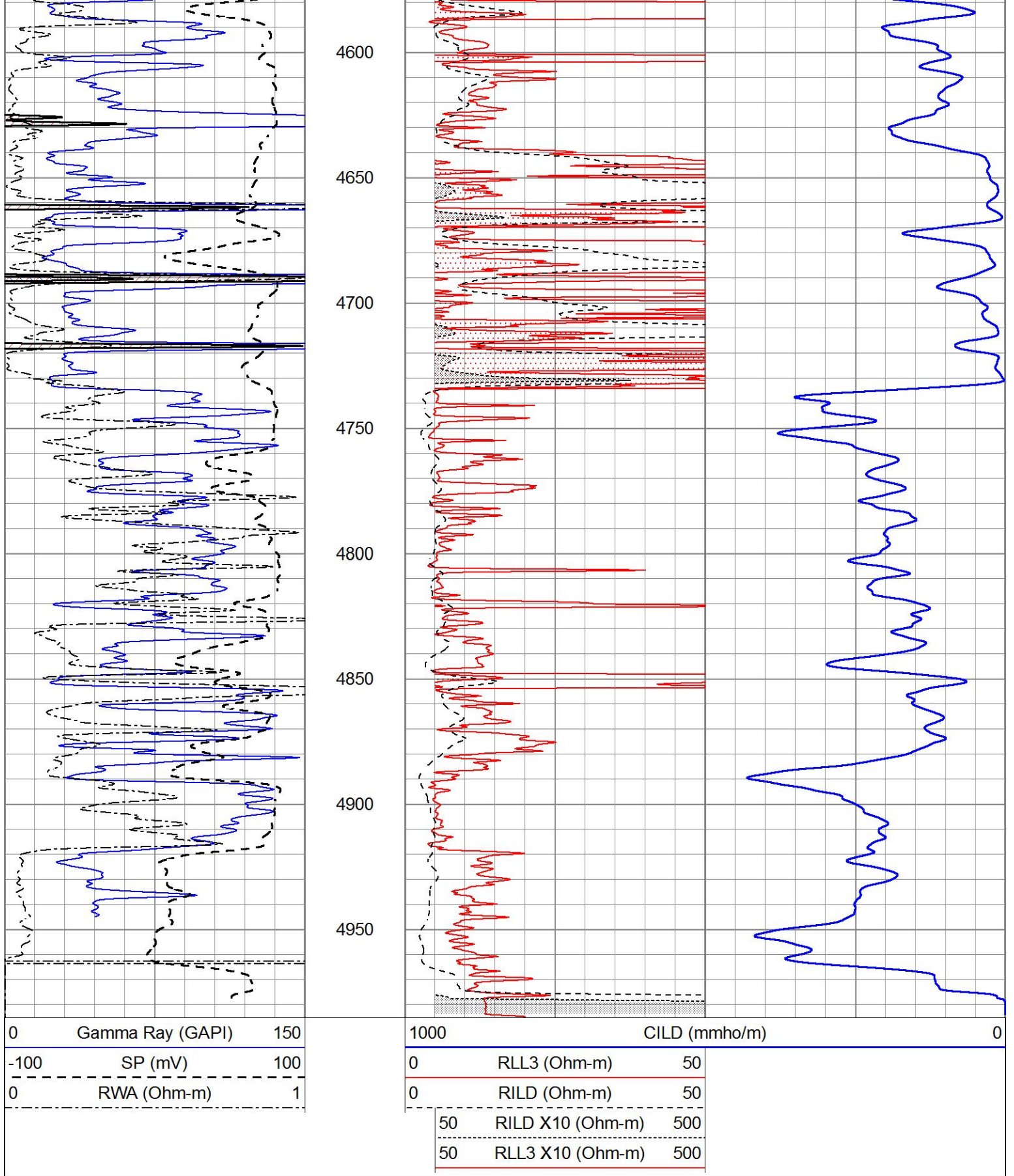
4400

4450

4500

4550

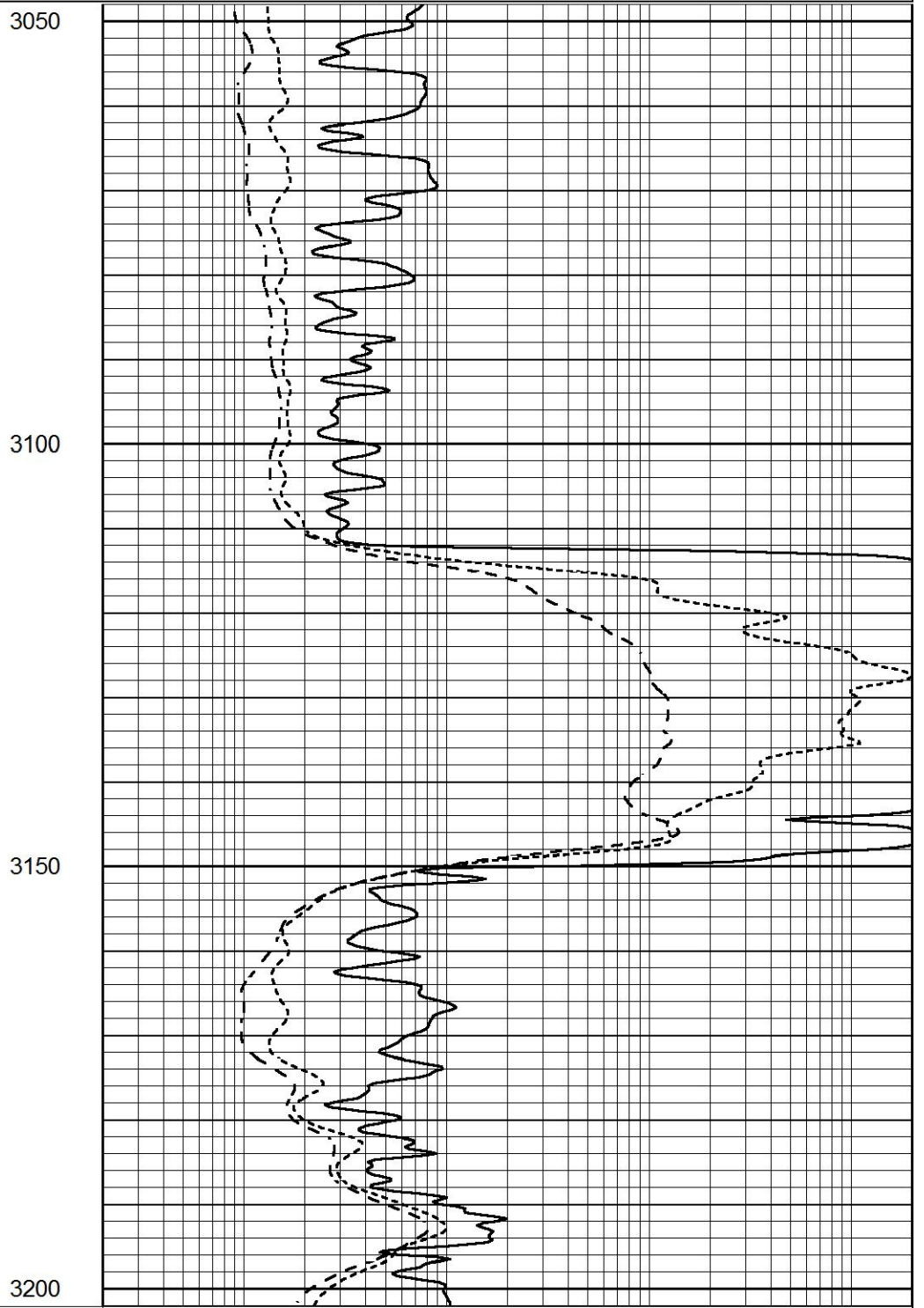
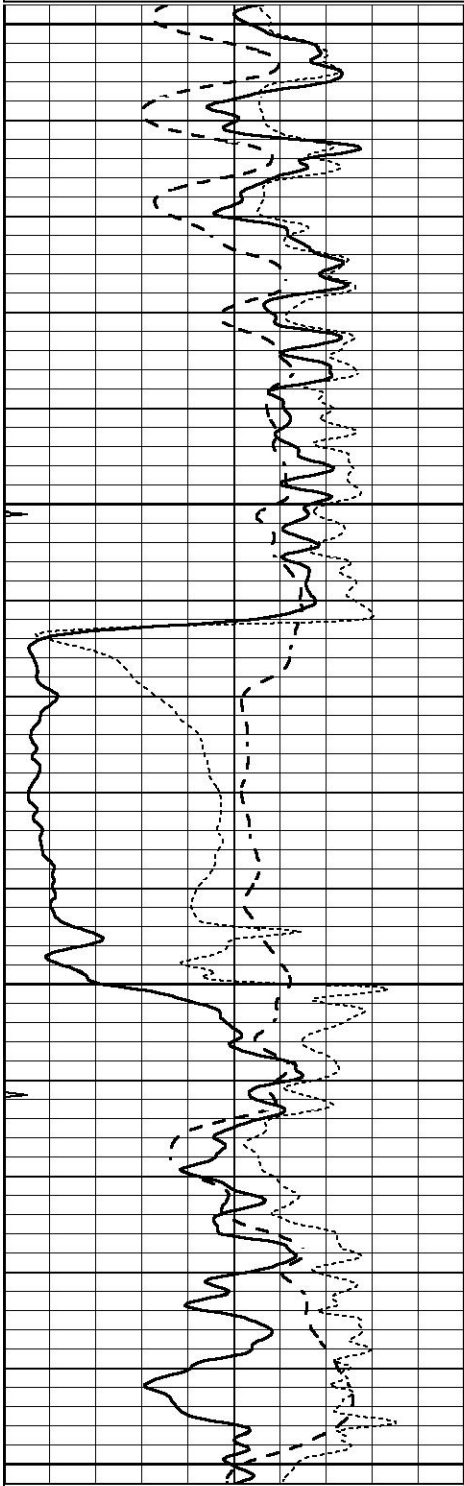




# ANHYDRITE

0	GAMMA RAY (GAPI)	150
-100	SP (mV)	100
-250	Rxo/Rt	50
0	MINMK	20

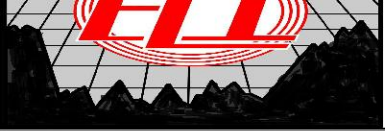
0.2	SHALLOW GUARD (Ohm-m)	2000
0.2	DEEP INDUCTION (Ohm-m)	2000
0.2	MEDIUM INDUCTION (Ohm-m)	2000



0	GAMMA RAY (GAPI)	150
-100	SP (mV)	100
-250	Rxo/Rt	50
0	MINMK	20

0.2	SHALLOW GUARD (Ohm-m)	2000
0.2	DEEP INDUCTION (Ohm-m)	2000
0.2	MEDIUM INDUCTION (Ohm-m)	2000



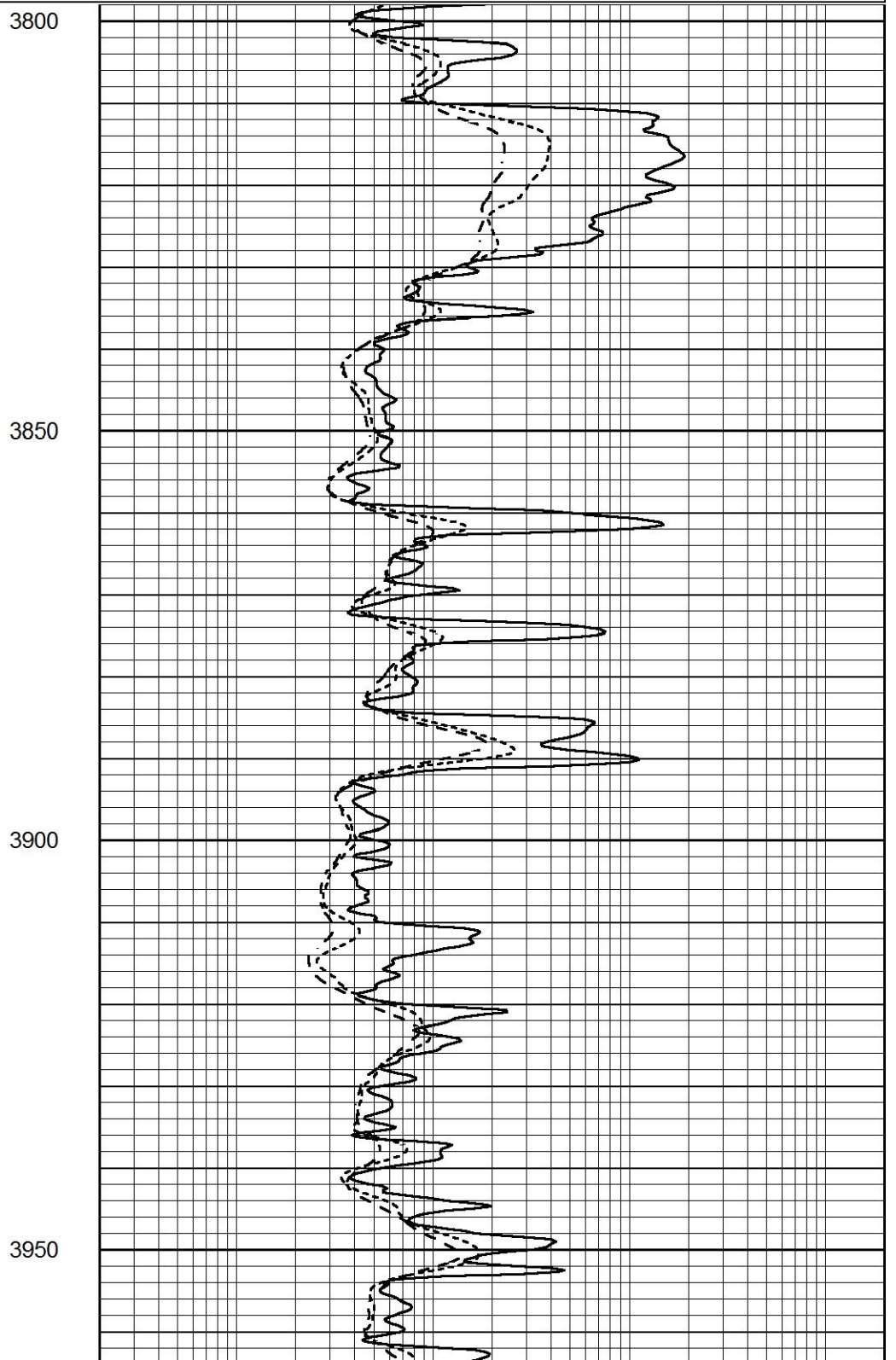
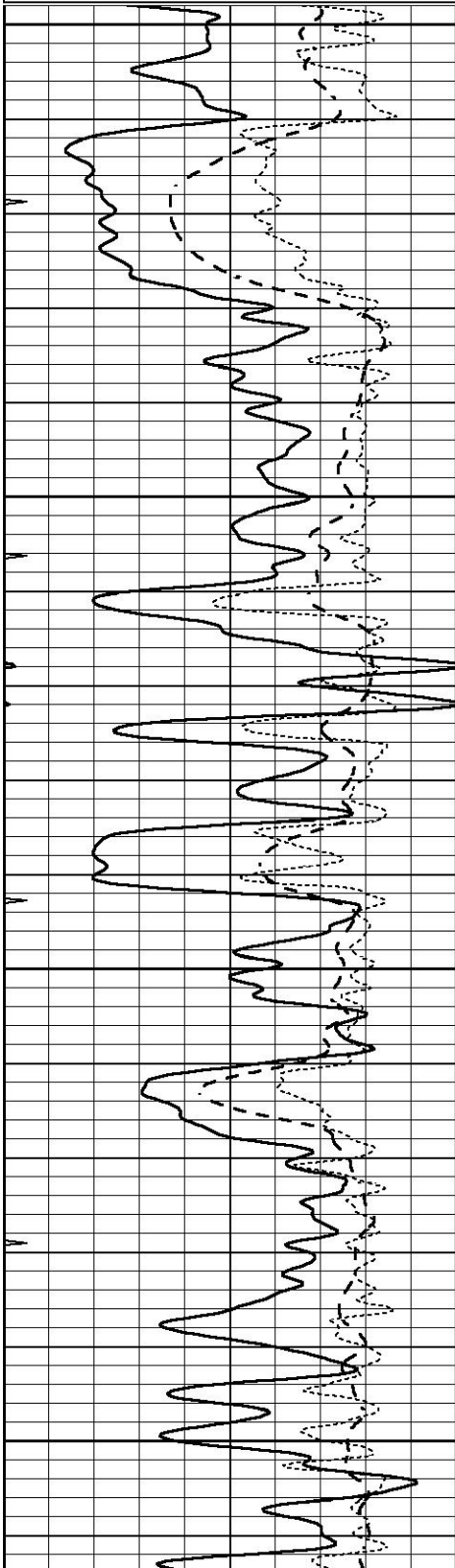


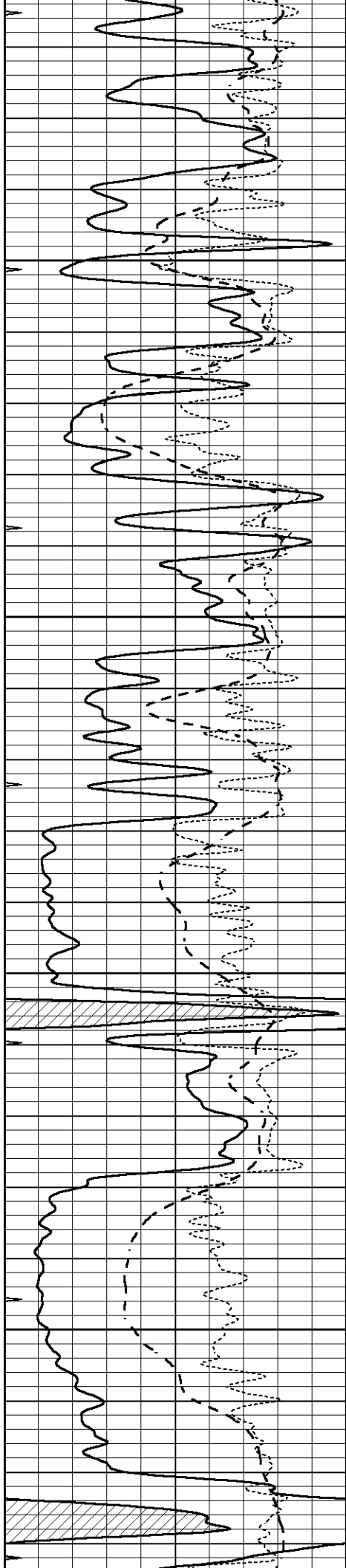
# MAIN SECTION

Database File 7884pe.db  
Dataset Pathname pass4.1M  
Presentation Format \_dil  
Dataset Creation Sun May 14 16:23:25 2023  
Charted by Depth in Feet scaled 1:240

0	GAMMA RAY (GAPI)	150
-100	SP (mV)	100
-250	Rxo/Rt	50
0	MINMK	20

0.2	SHALLOW GUARD (Ohm-m)	2000
0.2	DEEP INDUCTION (Ohm-m)	2000
0.2	MEDIUM INDUCTION (Ohm-m)	2000



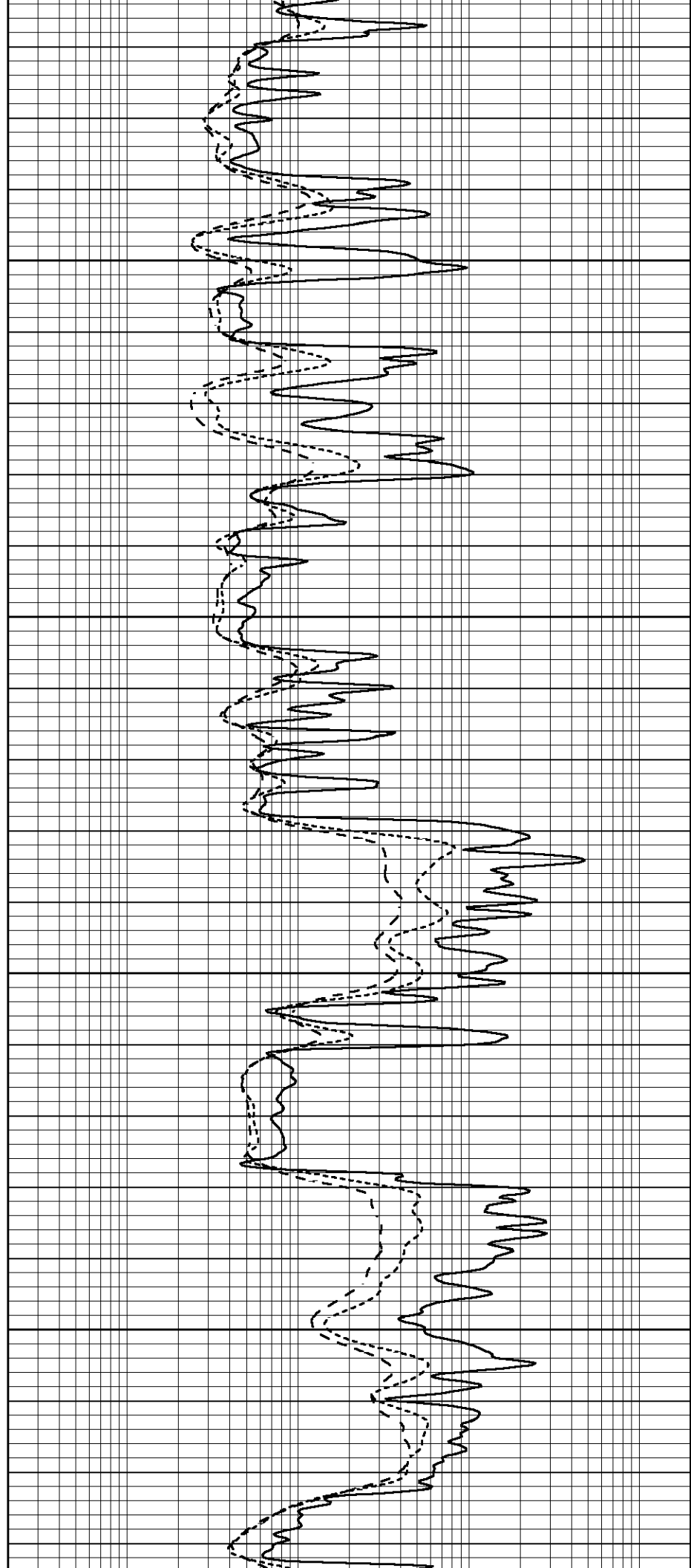


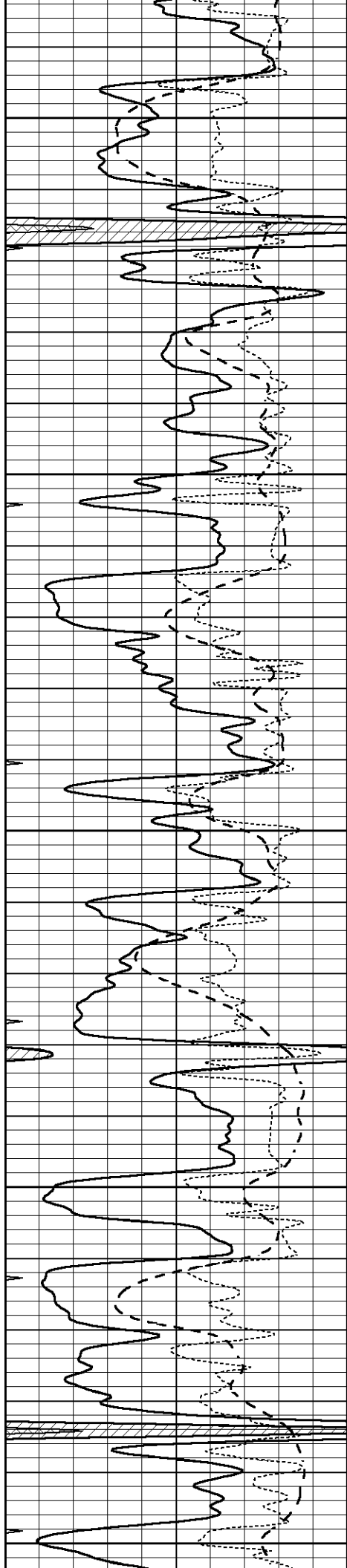
4000

4050

4100

4150





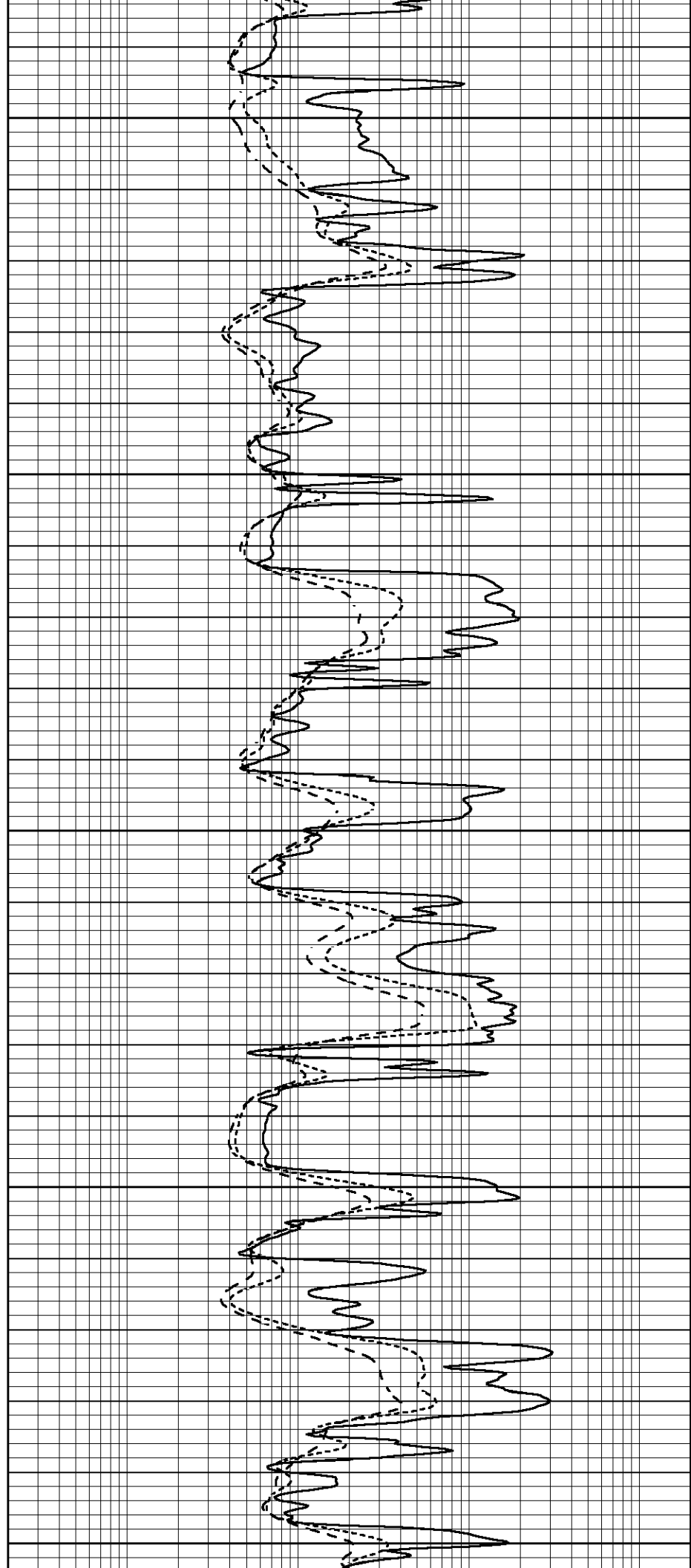
4200

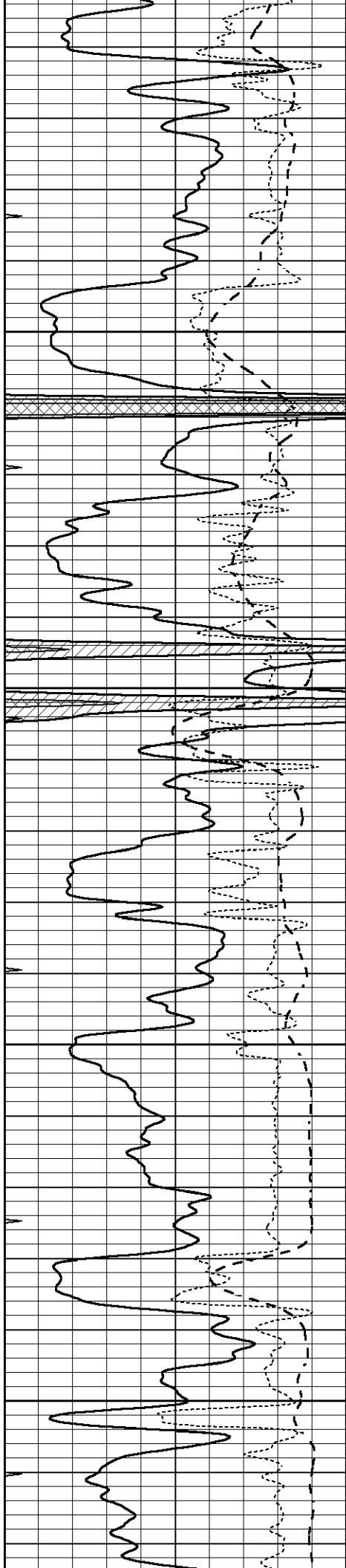
4250

4300

4350

4400



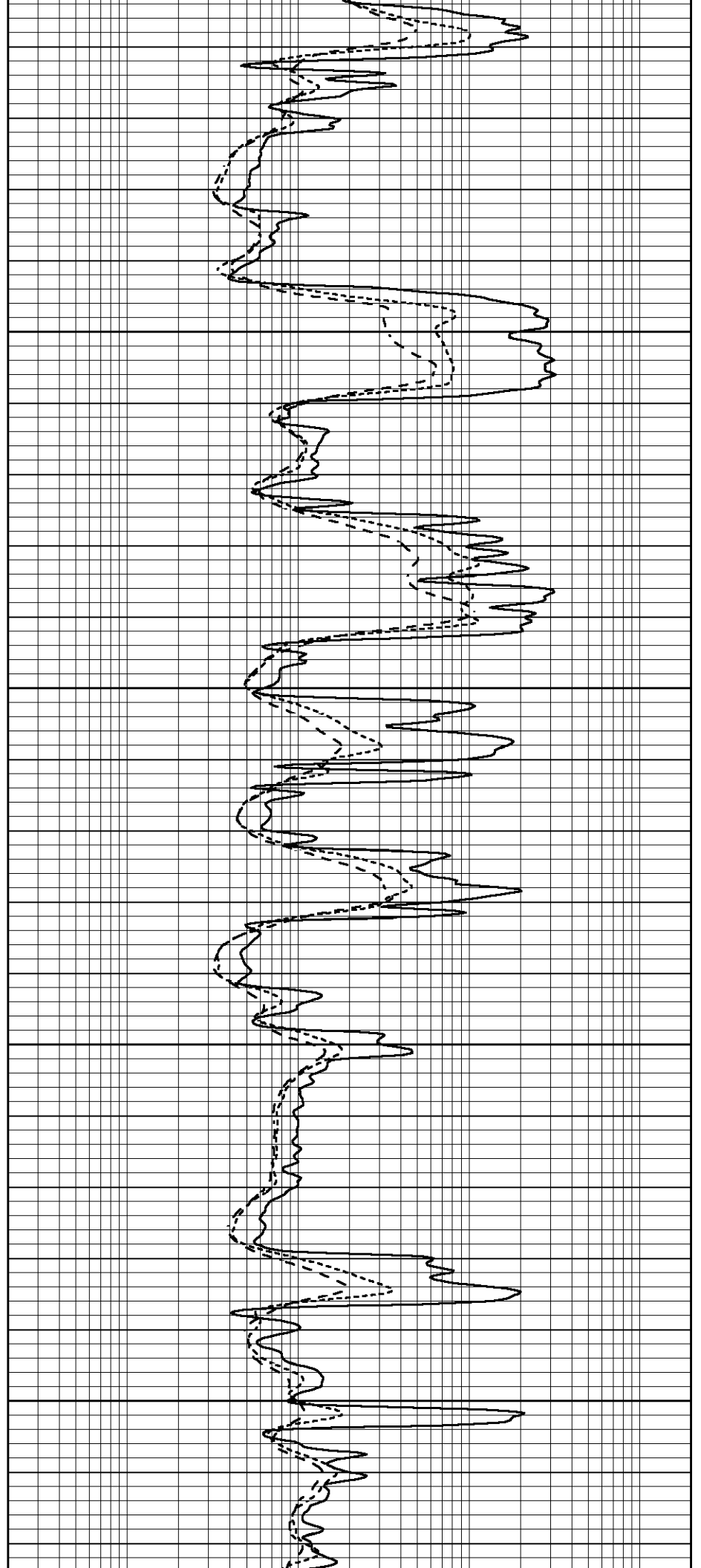


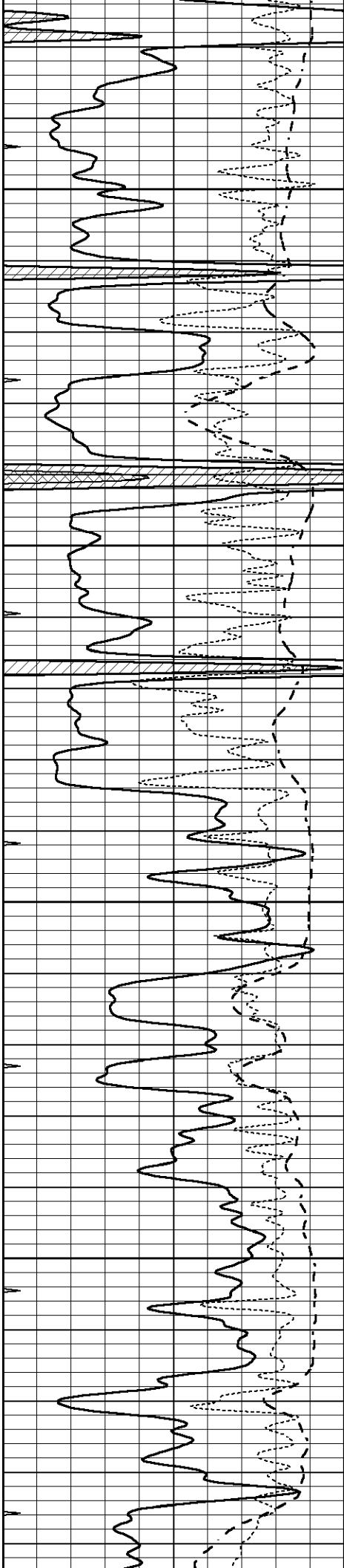
4450

4500

4550

4600



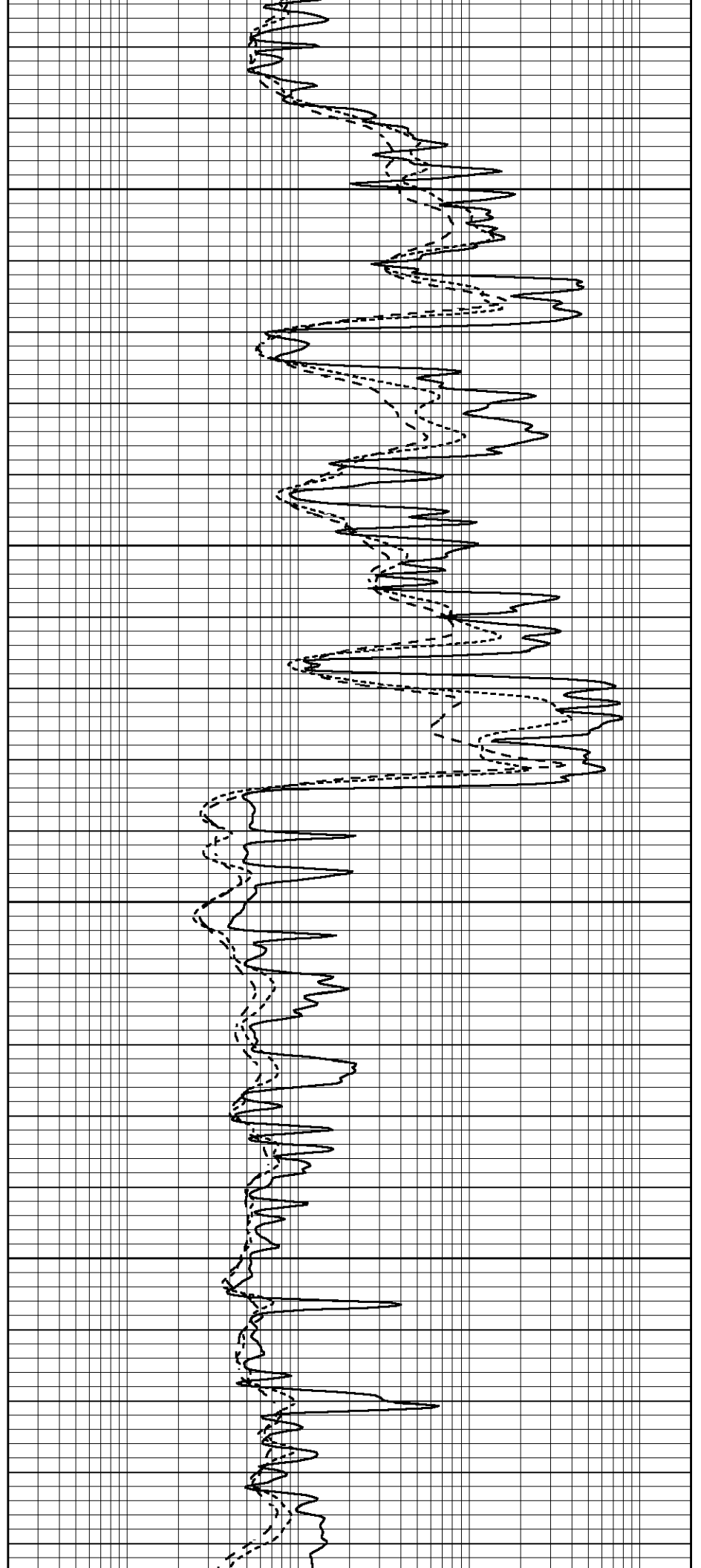


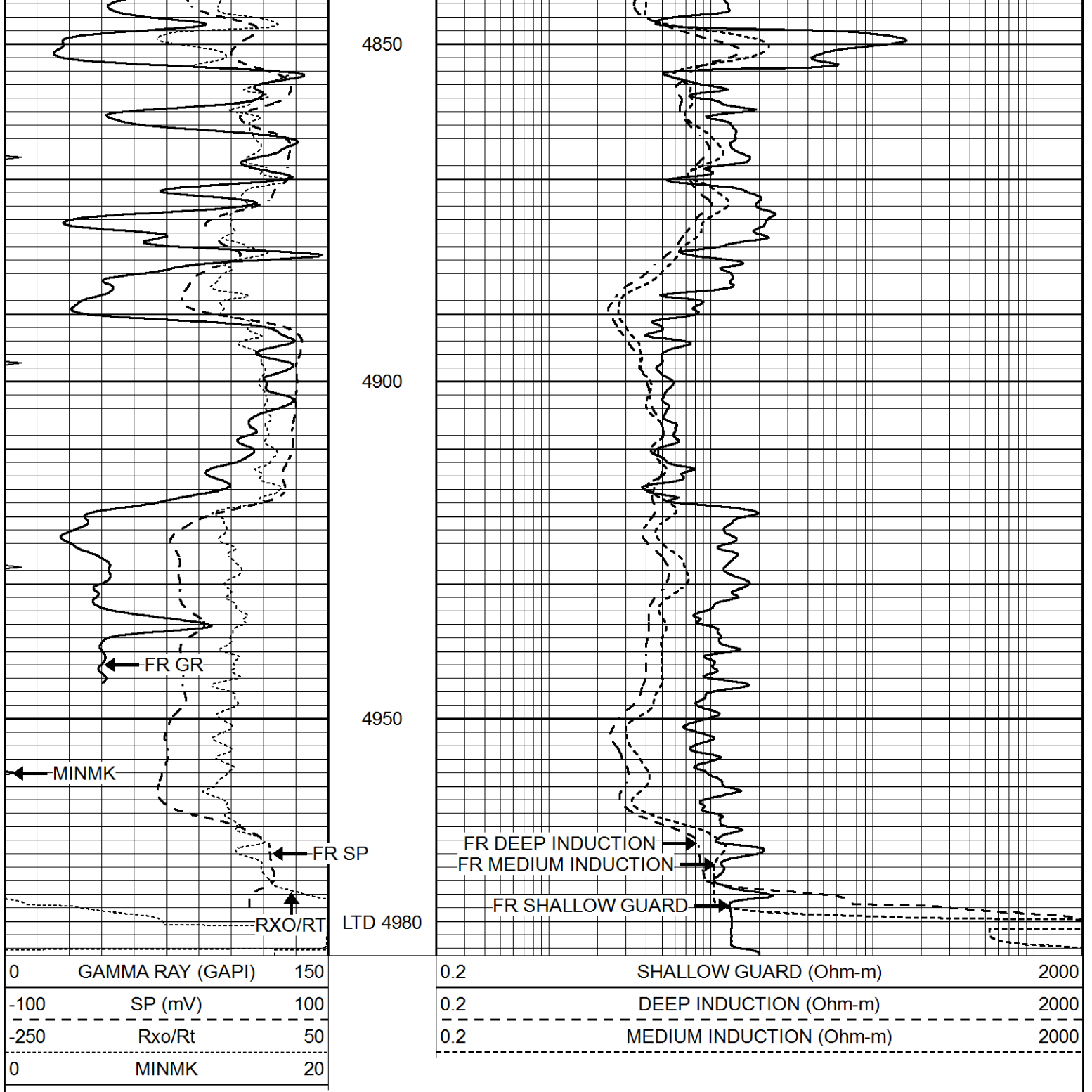
4650

4700

4750

4800





### Calibration Report

Database File 7884pe.db  
 Dataset Pathname pass4.1M  
 Dataset Creation Sun May 14 16:23:25 2023

### Dual Induction Calibration Report

Serial-Model: PROBE8-DILG  
 Surface Cal Performed: Tue May 09 08:05:37 2023  
 Downhole Cal Performed: Mon Jul 28 11:08:27 2008  
 After Survey Verification Performed: Mon Jul 28 11:08:27 2008

### Surface Calibration

Readings		References		Results	
Loop	Air	Loop	Air	m	b

Deep	0.015	0.648	V	0.000	400.000	mmho/m	640.000	8.000
Medium	0.029	0.796	V	0.000	464.000	mmho/m	600.000	-4.000
Internal:	Zero	Cal		Zero	Cal		m	b
Deep	0.017	0.657	V	0.000	400.000	mmho/m	625.153	-10.619
Medium	0.016	0.757	V	0.000	464.000	mmho/m	625.992	-9.739

Downhole Calibration								
	Readings			References			Results	
	Zero	Cal		Zero	Cal		m'	b'
Deep	0.000	0.000	mmho/m	2.011	405.777	mmho/m	1.000	0.000
Medium	0.000	0.000	mmho/m	7.590	503.393	mmho/m	1.000	0.000
LL3		7.500	V		1500.000	Ohm-m		
		0.000	V		20.000	Ohm-m		
		-7.200	V		3800.000	mmho-m		

After Survey Verification								
	Readings			Targets			Results	
	Zero	Cal		Zero	Cal		m'	b'
Deep	0.000	0.000	mmho/m	0.000	0.000	mmho/m	0.000	0.000
Medium	0.000	0.000	mmho/m	0.000	0.000	mmho/m	0.000	0.000
LL3		1.000	Ohm-m		1.000	Ohm-m		
		0.000	Ohm-m		0.000	Ohm-m		
		1.000	mmho-m		1.000	mmho-m		

Litho Density Calibration Report  
Serial: 004      Model: PRB

Master Calibration					Performed Tue Aug 02 11:29:35 2022			
	Background	Magnesium	Aluminum	Aluminum+Fe				
Window 1	1154.2	10019.5	3137.9	2795.6				cps
Window 2	1054.4	8597.6	2733.4	2469.5				cps
Window 3	902.3	5241.4	1832.1	1719.3				cps
Window 4	251.9	261.1	255.8	252.9				cps
Long Space	0.0	7543.2	1679.0	1415.0				cps
Short Space	4.4	2049.3	1321.7	1116.8				cps
Rho		1.7100	2.5900	0.0000				g/cc
Pe		2.0000	2.7500	5.7900				
Rib Angle	: 43.7	Rib Slope	: 0.957	Density/Spine Ratio				: 0.562
Spine Angle	: 73.7	Spine Slope	: 3.426	Spine Intercept				: -17.2

Before Survey Verification					Performed Wed Dec 31 18:00:00 1969			
	Background	Magnesium	Aluminum	Aluminum+Fe				
Window 1	0.0	0.0	0.0	0.0				cps
Window 2	0.0	0.0	0.0	0.0				cps
Window 3	0.0	0.0	0.0	0.0				cps
Window 4	0.0	0.0	0.0	0.0				cps
Long Space	0.0	0.0	0.0	0.0				cps
Short Space	0.0	0.0	0.0	0.0				cps
Measured Rho		0.0000	0.0000	0.0000				g/cc
Measured Correction		0.0000	0.0000	0.0000				g/cc
Measured Pe			0.0000	0.0000				

After Survey Verification					Performed Wed Dec 31 18:00:00 1969			
---------------------------	--	--	--	--	------------------------------------	--	--	--

Window 1	0.0	0.0	0.0	0.0	cps
Window 2	0.0	0.0	0.0	0.0	cps
Window 3	0.0	0.0	0.0	0.0	cps
Window 4	0.0	0.0	0.0	0.0	cps
Long Space	0.0	0.0	0.0	0.0	cps
Short Space	0.0	0.0	0.0	0.0	cps
Measured Rho		0.0000	0.0000	0.0000	g/cc
Measured Correction		0.0000	0.0000	0.0000	g/cc
Measured Pe			0.0000	0.0000	

Compensated Neutron Calibration Report

Serial Number: 070808PMC  
Tool Model: NABORS

PRE-SURVEY VERIFICATION

Detector	Readings	Measured	Target
Short Space	cps		
Long Space	cps	pu	pu

POST-SURVEY VERIFICATION

Detector	Readings	Measured	Target
Short Space	cps		
Long Space	cps	pu	pu

Gamma Ray Calibration Report

Serial Number: 070558  
Tool Model: OPEN\_GR  
Performed: Tue May 09 09:11:42 2023

Calibrator Value: 1.0 GAPI

Background Reading: 0.0 cps  
Calibrator Reading: 1.0 cps

Sensitivity: 0.3000 GAPI/cps