



**COMPENSATED
DENSITY / NEUTRON
PE LOG**

Company ARCADIAN RESOURCES, LLC.
Well LYNN #12-1
Field UNNAMED
County CHEYENNE
State KANSAS

Company ARCADIAN RESOURCES, LLC.
Well LYNN #12-1
Field UNNAMED
County CHEYENNE State KANSAS

Location: API #: 15-023-21615-0000
1550' FNL & 1090' FWL
NE - NE - SW - NW
Permanent Datum GROUND LEVEL Elevation 3381
Log Measured From KELLY BUSHING 6' A.G.L.
Drilling Measured From KELLY BUSHING
Other Services DILMEL
Elevation
SEC 12 TWP 5S RGE 37W

Date	5/14/23
Run Number	ONE
Depth Driller	4980
Depth Logger	4980
Bottom Logged Interval	4956
Top Log Interval	3800
Casing Driller	8 5/8"@355'
Casing Logger	355
Bit Size	7 7/8"
Type Fluid in Hole	CHEMICAL MUD
Density / Viscosity	9.4/57
pH / Fluid Loss	9.5/8.0
Source of Sample	FLOWLINE
Rm @ Meas. Temp	1.60@74F
Rmf @ Meas. Temp	1.20@74F
Rmc @ Meas. Temp	1.92@74F
Source of Rmf / Rmc	MEASUREMENT
Rm @ BHT	.947@125F
Time Circulation Stopped	3 HOURS
Time Logger on Bottom	2:30 P.M.
Maximum Recorded Temperature	125F
Equipment Number	922339
Location	HAYS, KANSAS
Recorded By	JEFF LUEBBERS
Witnessed By	SEAN DEENIHAN

<<< Fold Here >>>

All interpretations are opinions based on inferences from electrical or other measurements and we cannot and do not guarantee the accuracy or correctness of any interpretation, and we shall not, except in the case of gross or willful negligence on our part, be liable or responsible for any loss, costs, damages, or expenses incurred or sustained by anyone resulting from any interpretation made by any of our officers, agents or employees. These interpretations are also subject to our general terms and conditions set out in our current Price Schedule.

15-023-21615-0000 Comments

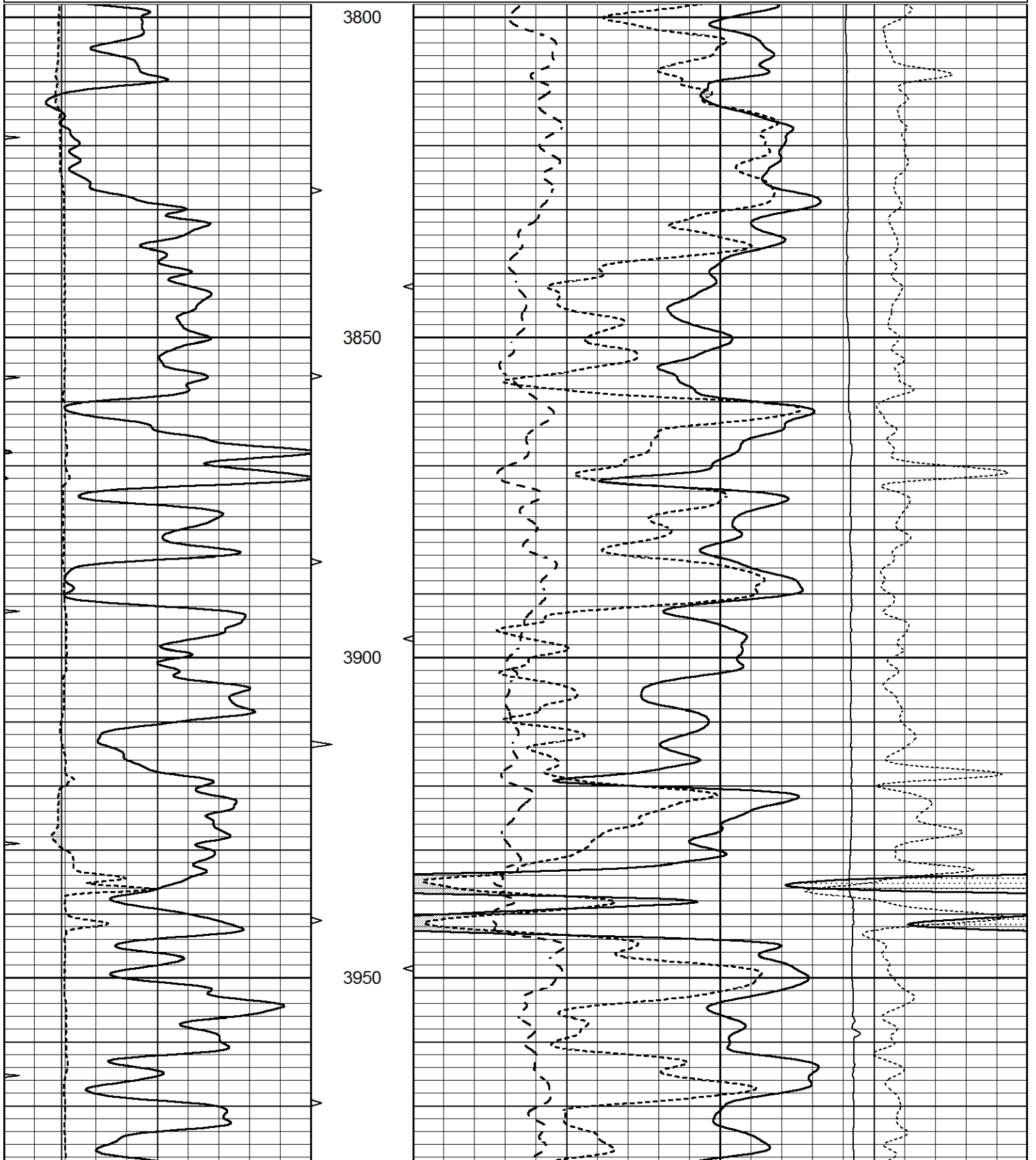
THANK YOU FOR USING ELI WIRELINE HAYS, KANSAS (785) 628-6395
DIRECTIONS
BREWSTER, KS. & I-70, N. TO COUNTY LINE, W. TO "RD. 34", 3N., E. INTO
NOTE: (DUE TO HOLE CONDITIONS, NO REPEAT WAS RAN)

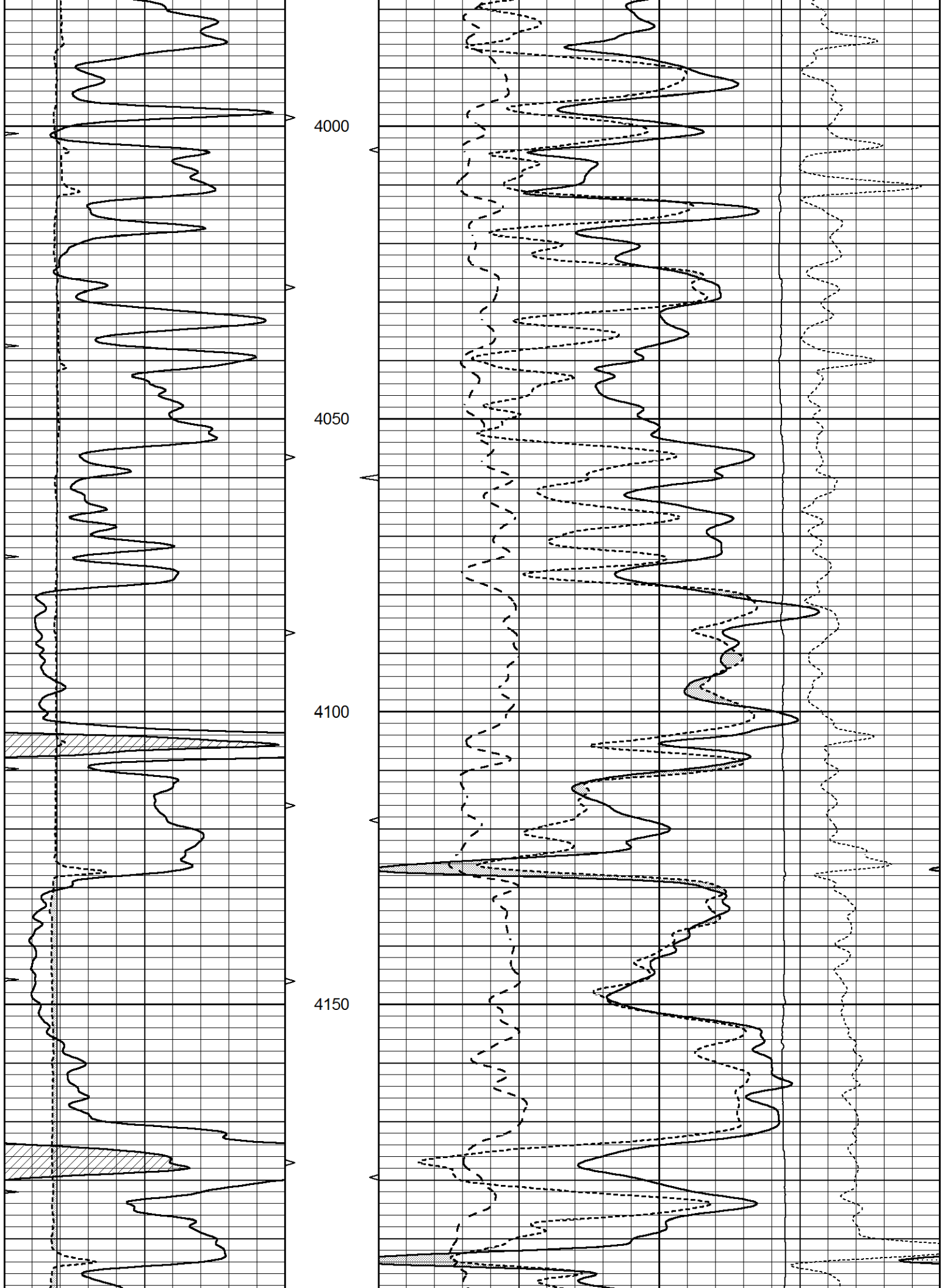


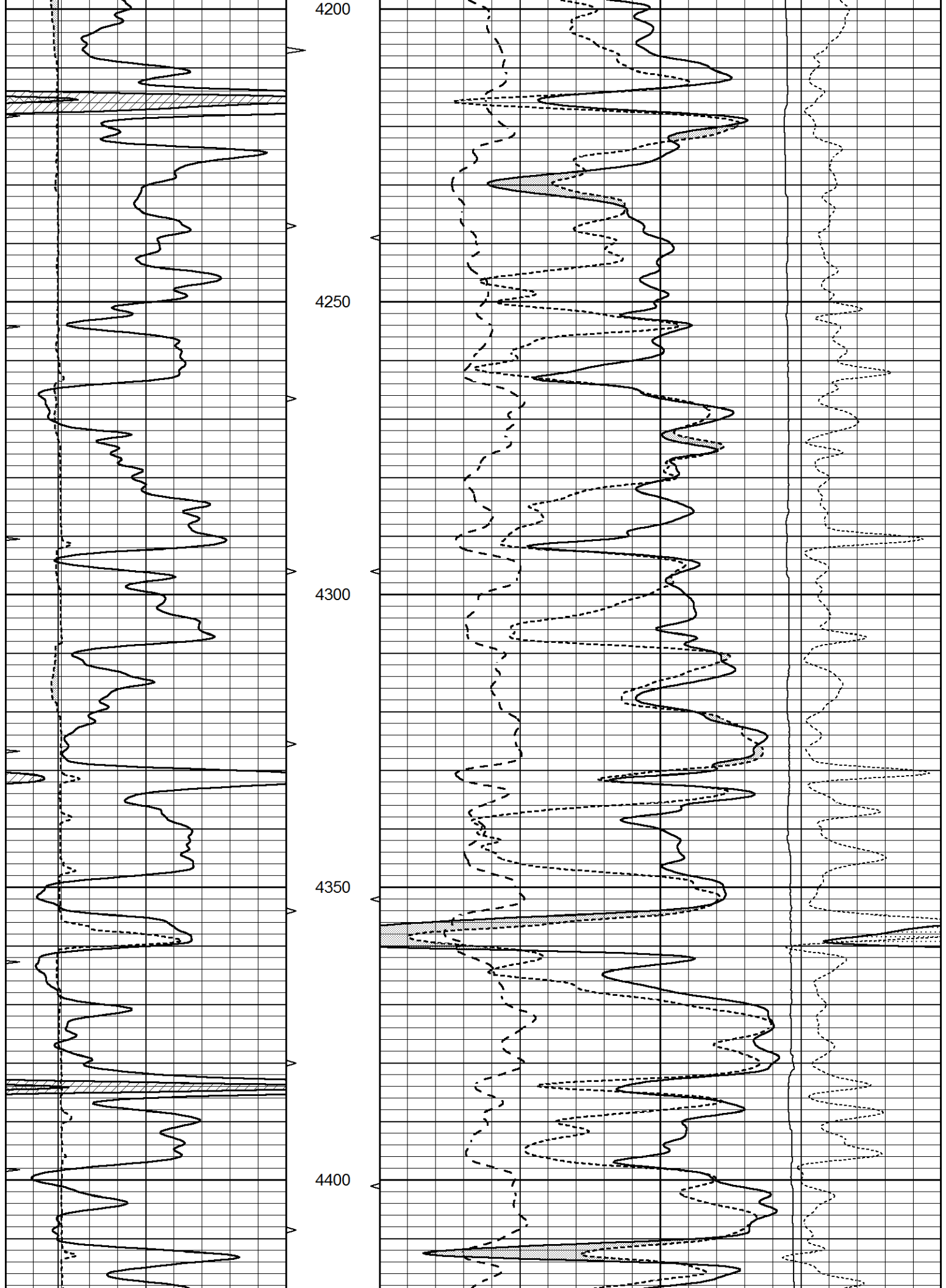
MAIN SECTION

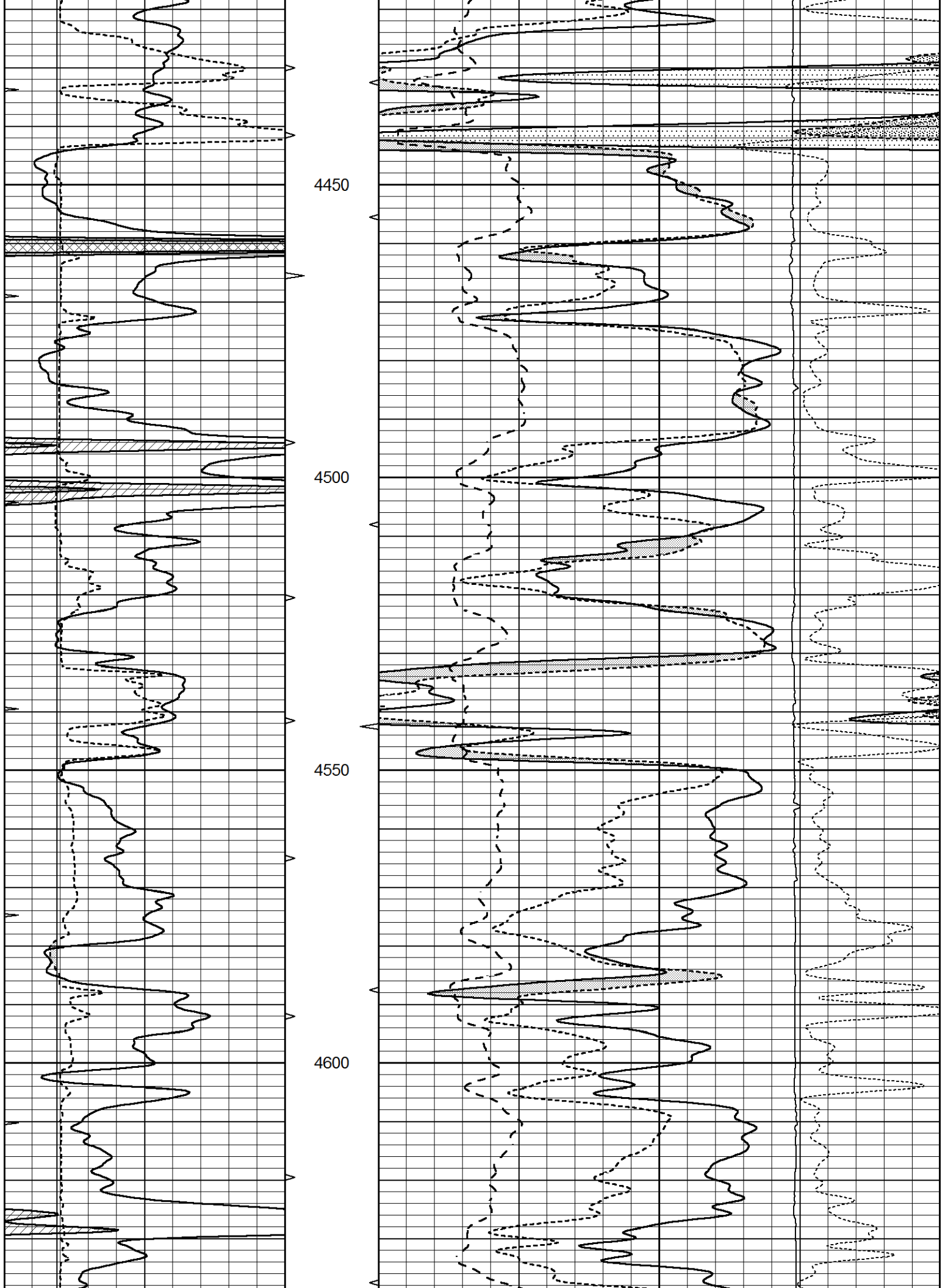
Database File 7884pe.db
 Dataset Pathname pass4.1M
 Presentation Format _ldt_neu
 Dataset Creation Sun May 14 16:23:25 2023
 Charted by Depth in Feet scaled 1:240

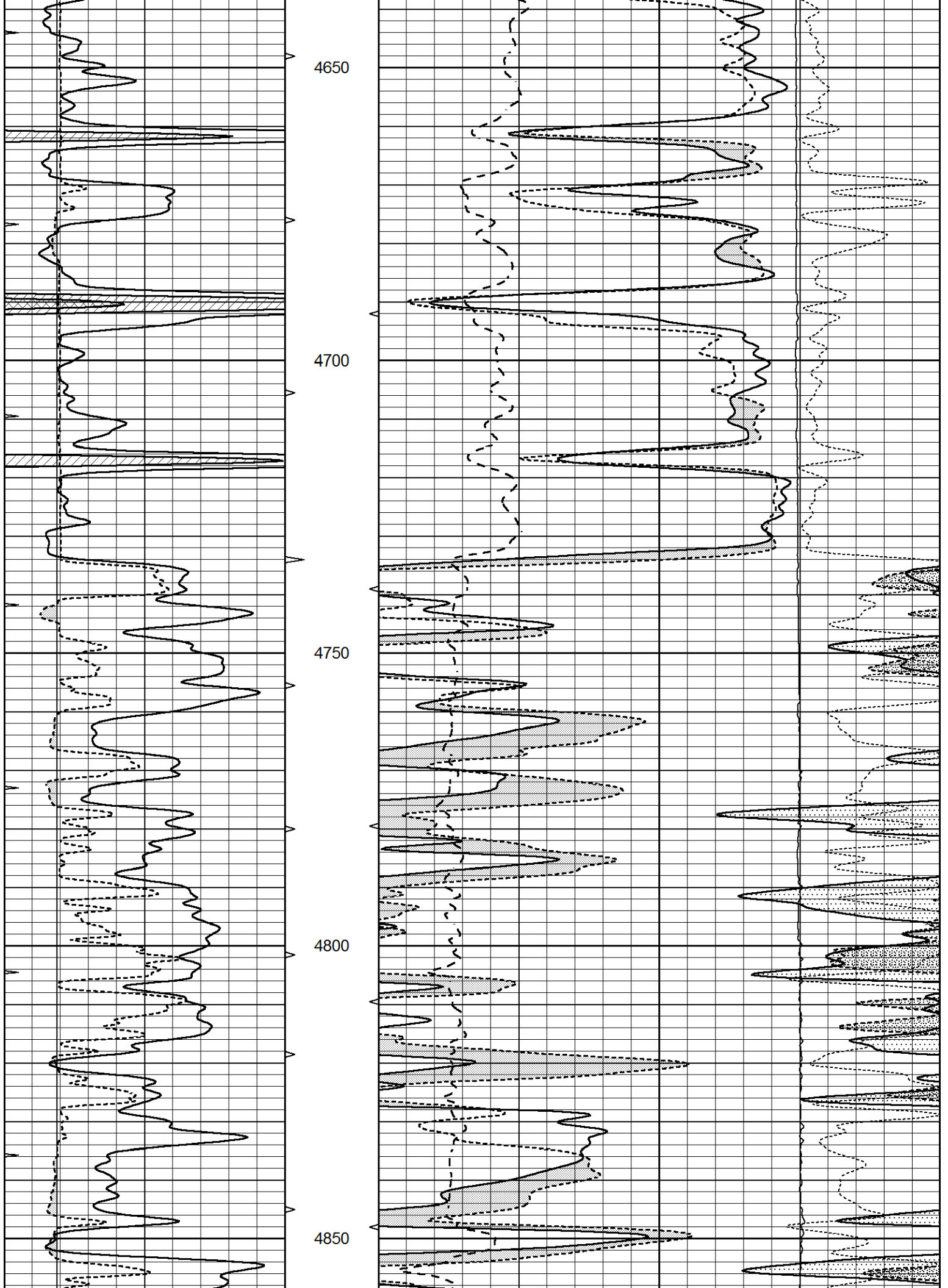
0	GAMMA RAY (GAPI)	150	ABHV	30	COMPENSATED DENSITY (pu)		-10
6	CALIPER (in)	16	10 (ft3)	0	COMPENSATED NEUTRON (pu)		-10
0	MINMK	20	TBHV	0	PE	10	-0.25 CORRECTION (g/cc) 0.25
			0 (ft3)	10		0	LTEN (lb) 5000

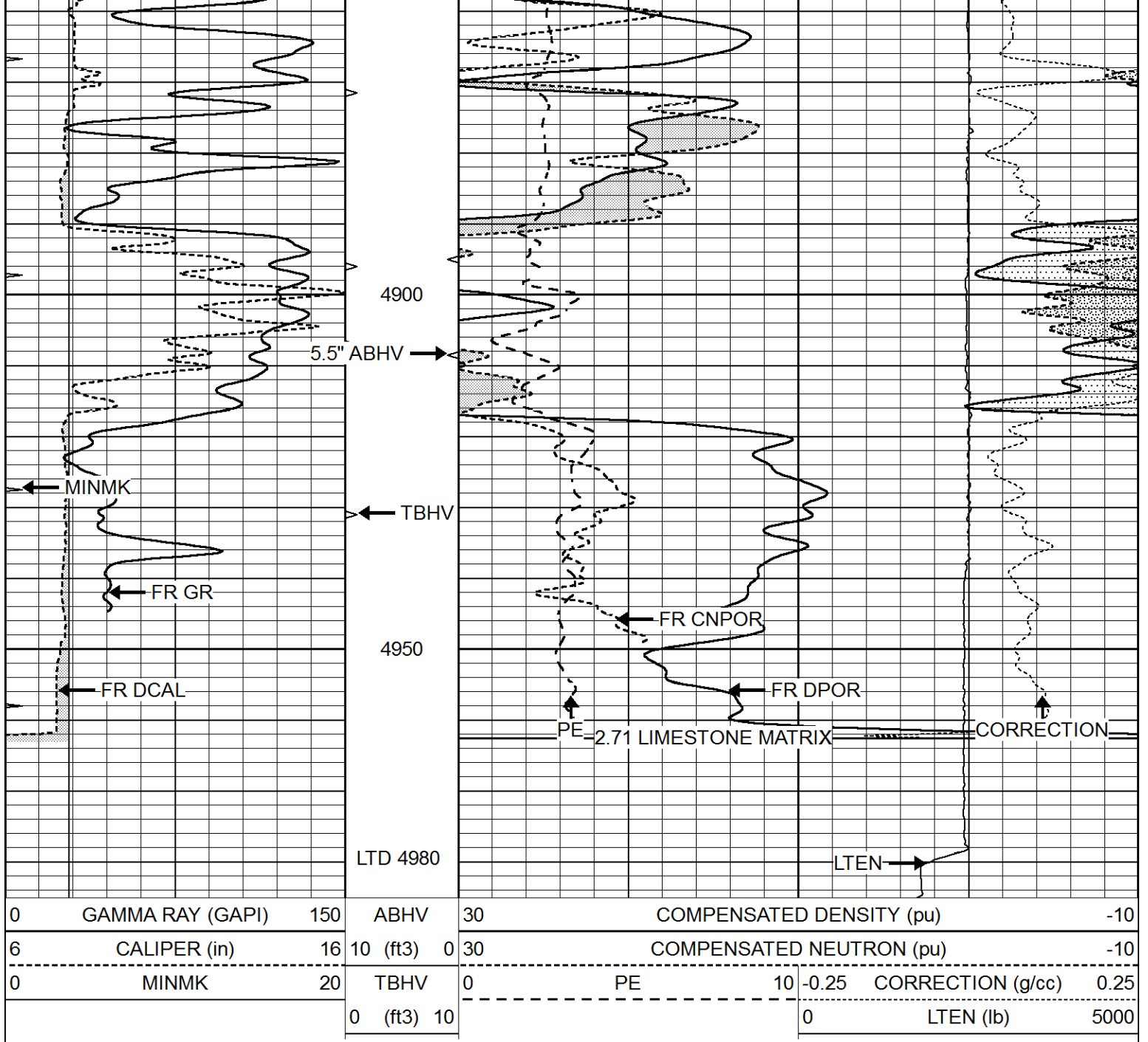












Calibration Report

Database File 7884pe.db
 Dataset Pathname pass4.1M
 Dataset Creation Sun May 14 16:23:25 2023

Dual Induction Calibration Report

Serial-Model: PROBE8-DILG
 Surface Cal Performed: Tue May 09 08:05:37 2023
 Downhole Cal Performed: Mon Jul 28 11:08:27 2008
 After Survey Verification Performed: Mon Jul 28 11:08:27 2008

Surface Calibration

Loop:	Readings			V	References			Results	
	Air	Loop			Air	Loop	mmho/m	m	b
Deep	0.015	0.648		0.000	400.000	mmho/m	640.000	8.000	
Medium	0.029	0.796		0.000	464.000	mmho/m	600.000	-4.000	
Internal:	Zero	Cal		Zero	Cal		m	b	

Internal.	Zero	Cal		Zero	Cal		m	b
Deep	0.017	0.657	V	0.000	400.000	mmho/m	625.153	-10.619
Medium	0.016	0.757	V	0.000	464.000	mmho/m	625.992	-9.739

Downhole Calibration								
	Readings			References			Results	
	Zero	Cal		Zero	Cal		m'	b'
Deep	0.000	0.000	mmho/m	2.011	405.777	mmho/m	1.000	0.000
Medium	0.000	0.000	mmho/m	7.590	503.393	mmho/m	1.000	0.000
LL3		7.500	V		1500.000	Ohm-m		
		0.000	V		20.000	Ohm-m		
		-7.200	V		3800.000	mmho-m		

After Survey Verification								
	Readings			Targets			Results	
	Zero	Cal		Zero	Cal		m'	b'
Deep	0.000	0.000	mmho/m	0.000	0.000	mmho/m	0.000	0.000
Medium	0.000	0.000	mmho/m	0.000	0.000	mmho/m	0.000	0.000
LL3		1.000	Ohm-m		1.000	Ohm-m		
		0.000	Ohm-m		0.000	Ohm-m		
		1.000	mmho-m		1.000	mmho-m		

Litho Density Calibration Report
Serial: 004 Model: PRB

Master Calibration					Performed Tue Aug 02 11:29:35 2022			
	Background	Magnesium	Aluminum	Aluminum+Fe				
Window 1	1154.2	10019.5	3137.9	2795.6				cps
Window 2	1054.4	8597.6	2733.4	2469.5				cps
Window 3	902.3	5241.4	1832.1	1719.3				cps
Window 4	251.9	261.1	255.8	252.9				cps
Long Space	0.0	7543.2	1679.0	1415.0				cps
Short Space	4.4	2049.3	1321.7	1116.8				cps
Rho		1.7100	2.5900	0.0000				g/cc
Pe		2.0000	2.7500	5.7900				
Rib Angle	: 43.7	Rib Slope	: 0.957	Density/Spine Ratio				: 0.562
Spine Angle	: 73.7	Spine Slope	: 3.426	Spine Intercept				: -17.2

Before Survey Verification					Performed Wed Dec 31 18:00:00 1969			
	Background	Magnesium	Aluminum	Aluminum+Fe				
Window 1	0.0	0.0	0.0	0.0				cps
Window 2	0.0	0.0	0.0	0.0				cps
Window 3	0.0	0.0	0.0	0.0				cps
Window 4	0.0	0.0	0.0	0.0				cps
Long Space	0.0	0.0	0.0	0.0				cps
Short Space	0.0	0.0	0.0	0.0				cps
Measured Rho		0.0000	0.0000	0.0000				g/cc
Measured Correction		0.0000	0.0000	0.0000				g/cc
Measured Pe			0.0000	0.0000				

After Survey Verification					Performed Wed Dec 31 18:00:00 1969			
	Background	Magnesium	Aluminum	Aluminum+Fe				
Window 1	0.0	0.0	0.0	0.0				cps
Window 2	0.0	0.0	0.0	0.0				cps
Window 3	0.0	0.0	0.0	0.0				cps

Window 4	0.0	0.0	0.0	0.0	cps
Long Space	0.0	0.0	0.0	0.0	cps
Short Space	0.0	0.0	0.0	0.0	cps
Measured Rho		0.0000	0.0000	0.0000	g/cc
Measured Correction		0.0000	0.0000	0.0000	g/cc
Measured Pe			0.0000	0.0000	

Compensated Neutron Calibration Report

Serial Number: 070808PMC
Tool Model: NABORS

PRE-SURVEY VERIFICATION

Detector	Readings	Measured	Target
Short Space	cps		
Long Space	cps	pu	pu

POST-SURVEY VERIFICATION

Detector	Readings	Measured	Target
Short Space	cps		
Long Space	cps	pu	pu

Gamma Ray Calibration Report

Serial Number: 070558
Tool Model: OPEN_GR
Performed: Tue May 09 09:11:42 2023

Calibrator Value: 1.0 GAPI

Background Reading: 0.0 cps
Calibrator Reading: 1.0 cps

Sensitivity: 0.3000 GAPI/cps