



**COMPENSATED  
DENSITY/NEUTRON  
PE LOG**

Company **ARCADIAN RESOURCES, LLC.**

Well **VALLIN #2-1**

Field **UNNAMED**

County **CHEYENNE** State **KANSAS**

Location: **API # : 15-023-21611-0000**

**990' FSL & 2310' FWL  
NE - SE - SW**

**SEC 2 TWP 5S RGE 37W**

Other Services  
**DILMEL**

Permanent Datum **GROUND LEVEL Elevation 3398**  
Log Measured From **KELLY BUSHING 6' A.G.L**  
Drilling Measured From **KELLY BUSHING**

Elevation  
**K.B. 3404  
D.F. 3402  
G.L. 3398**

Company **ARCADIAN RESOURCES, LLC.**  
Well **VALLIN #2-1**  
Field **UNNAMED**  
County **CHEYENNE**  
State **KANSAS**

Date	6/2/23		
Run Number	ONE		
Depth Driller	4982		
Depth Logger	4982		
Bottom Logged Interval	4958		
Top Log Interval	3800		
Casing Driller	8 5/8 @ 367		
Casing Logger	367		
Bit Size	7 7/8		
Type Fluid in Hole	CHEMICAL MUD	CHLORIDES 1,000 PPM	
Density / Viscosity	9.4/56		
pH / Fluid Loss	10/8.0		
Source of Sample	FLOWLINE		
Rm @ Meas. Temp	1.40 @ 77F		
Rmf @ Meas. Temp	1.05 @ 77F		
Rmc @ Meas. Temp	1.68 @ 77F		
Source of Rmf / Rmc	MEASUREMENT		
Rm @ BHT	.862 @ 125F		
Time Circulation Stopped	2 HOURS		
Time Logger on Bottom	3:00 P.M.		
Maximum Recorded Temperature	125F		
Equipment Number	8916		
Location	HAYS, KANSAS		
Recorded By	COLE ROBBEN		
Witnessed By	SEAN DEENIHAN		

<<< Fold Here >>>

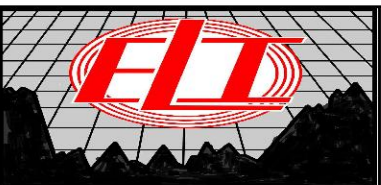
All interpretations are opinions based on inferences from electrical or other measurements and we cannot and do not guarantee the accuracy or correctness of any interpretation, and we shall not, except in the case of gross or willful negligence on our part, be liable or responsible for any loss, costs, damages, or expenses incurred or sustained by anyone resulting from any interpretation made by any of our officers, agents or employees. These interpretations are also subject to our general terms and conditions set out in our current Price Schedule.

**Comments**

**THANK YOU FOR USING ELI WIRELINE SERVICES, HAYS, KS. ( 785 ) 628-6395**

**DIRECTIONS:**

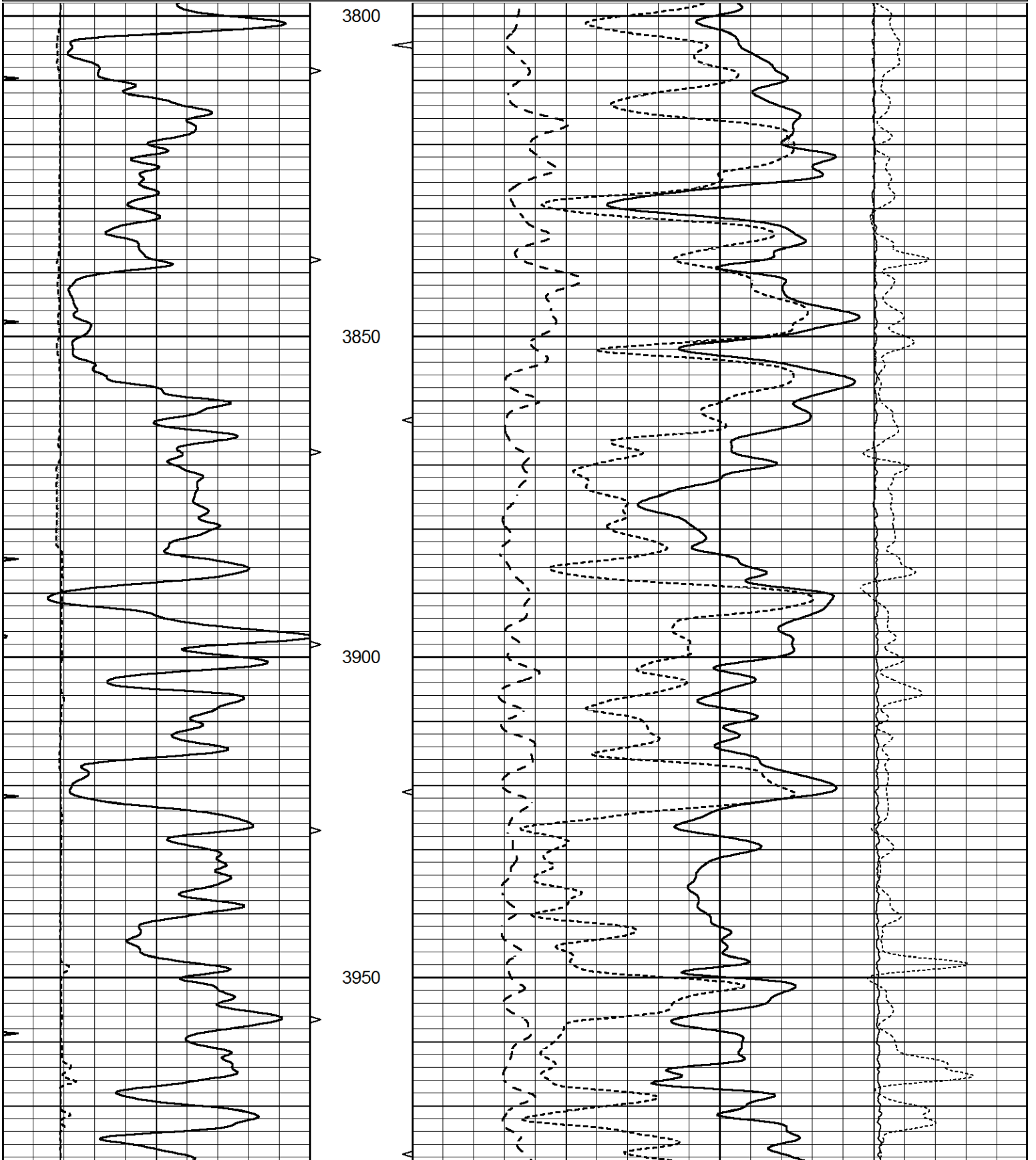
**FROM BREWSTER GO NORTH TO COUNTY LINE CORRECTION, WEST TO ROAD 34,  
NORTH TO ROAD 'F', WEST 1/2 MILE, NORTH INTO**

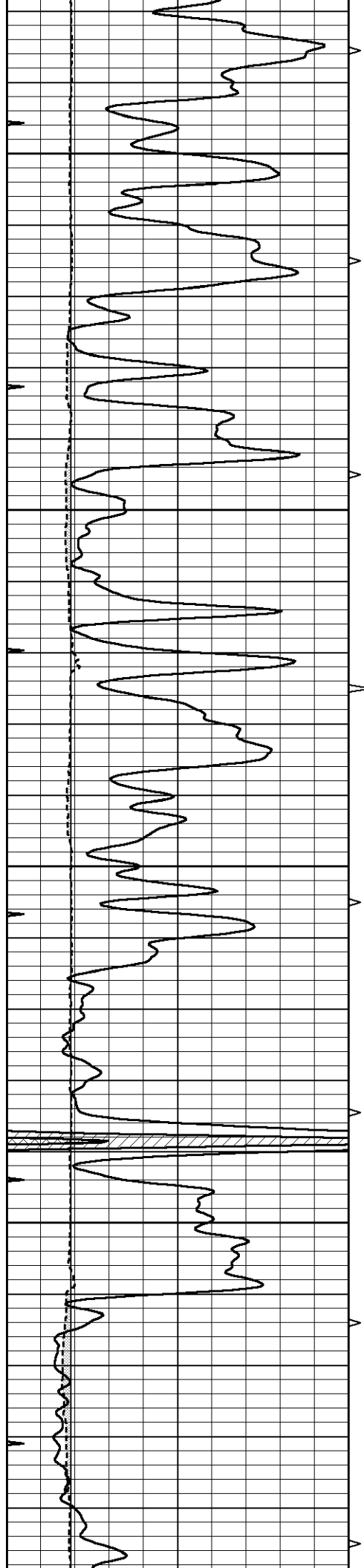


**MAIN SECTION**

Database File 7590pe.db  
 Dataset Pathname pass3.13  
 Presentation Format \_ldt\_neu  
 Dataset Creation Fri Jun 02 16:02:13 2023  
 Charted by Depth in Feet scaled 1:240

0	GAMMA RAY (GAPI)	150	ABHV	30	COMPENSATED DENSITY (pu)			-10	
6	CALIPER (in)	16	10 (ft3)	0	COMPENSATED NEUTRON (pu)			-10	
0	MINMK	20	TBHV	0	PE	10	-0.25	CORRECTION (g/cc)	0.25
			0 (ft3)	10			0	LTEN (lb)	5000



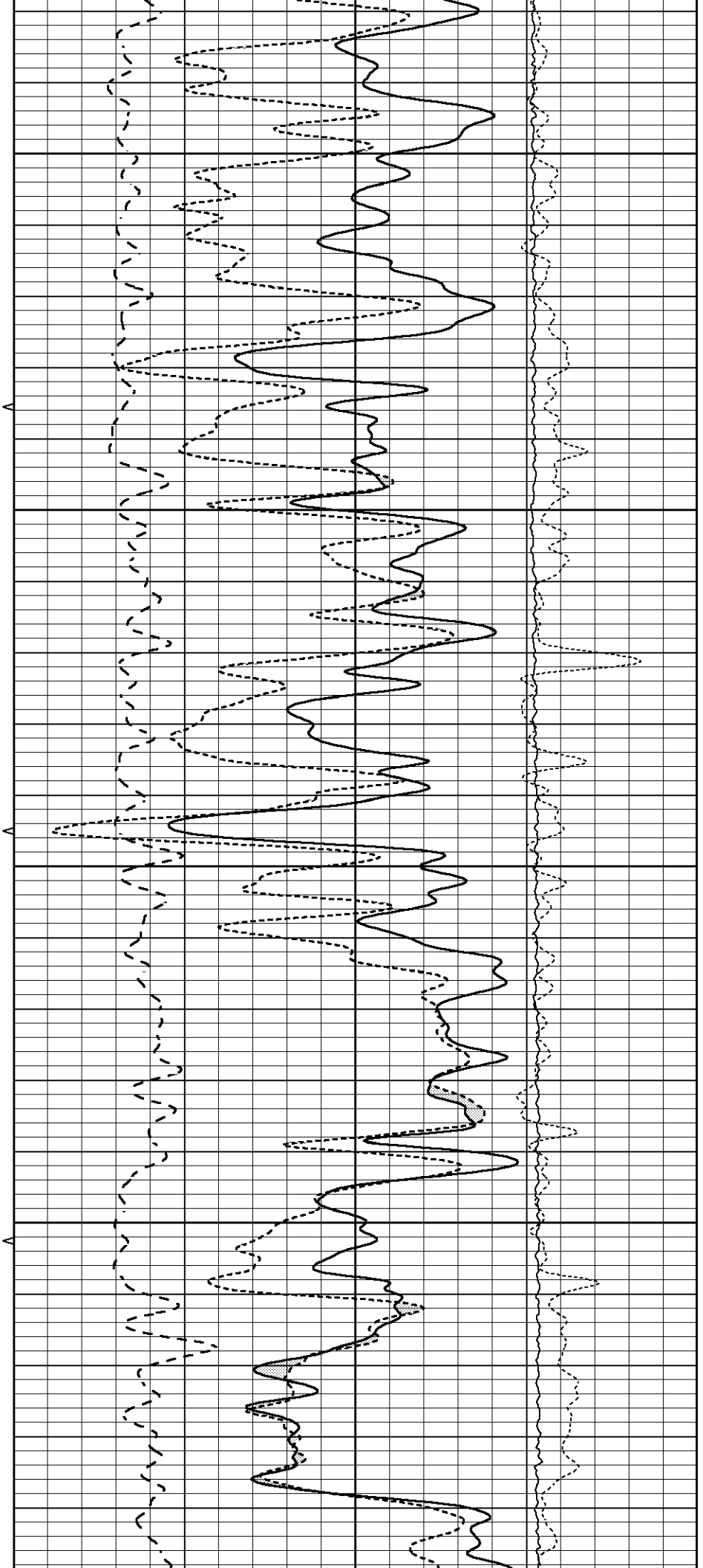


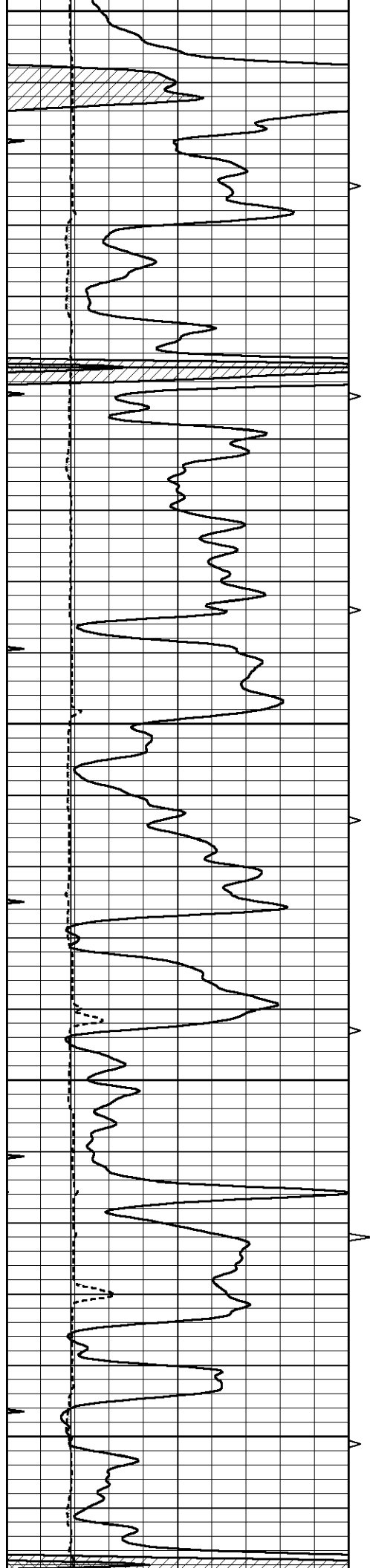
4000

4050

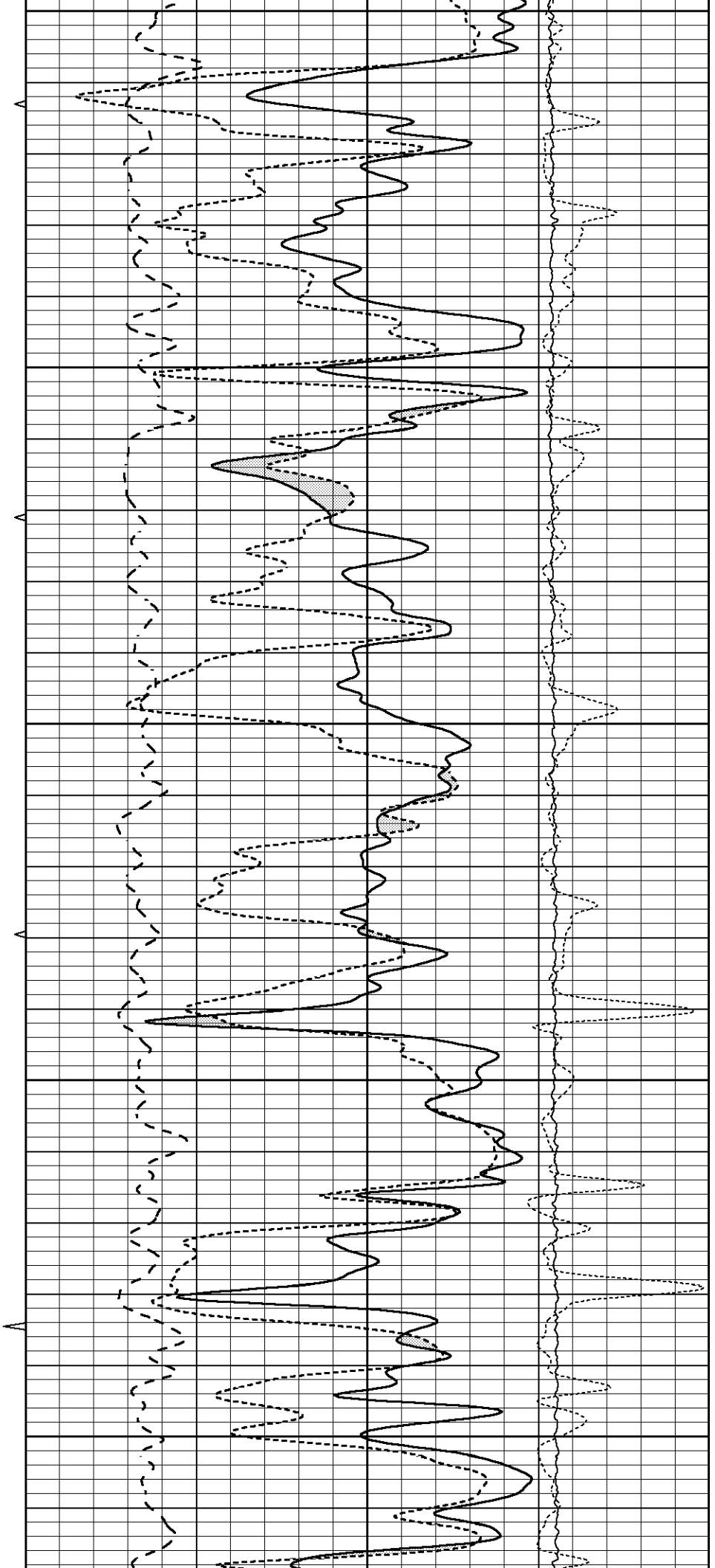
4100

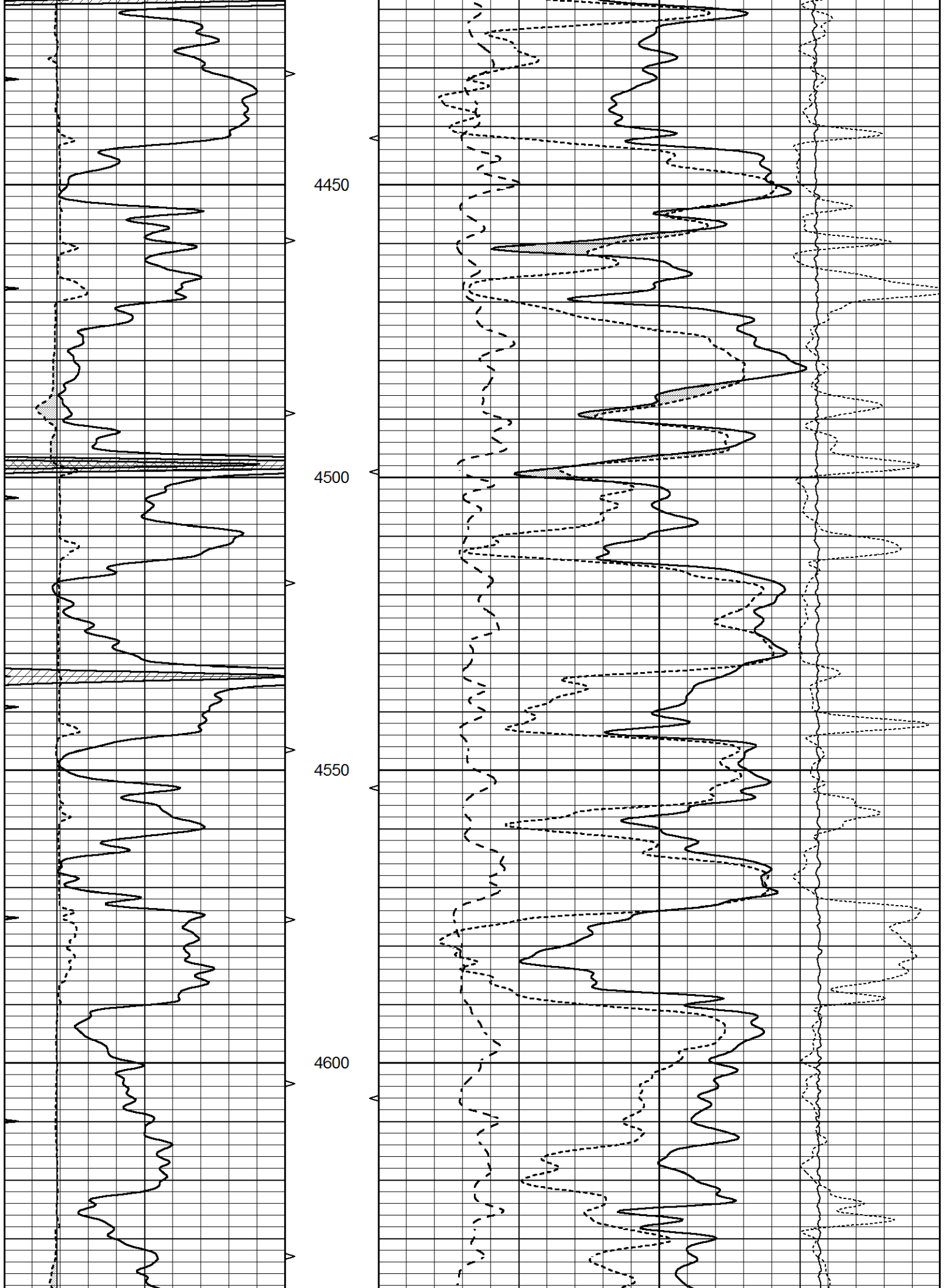
4150

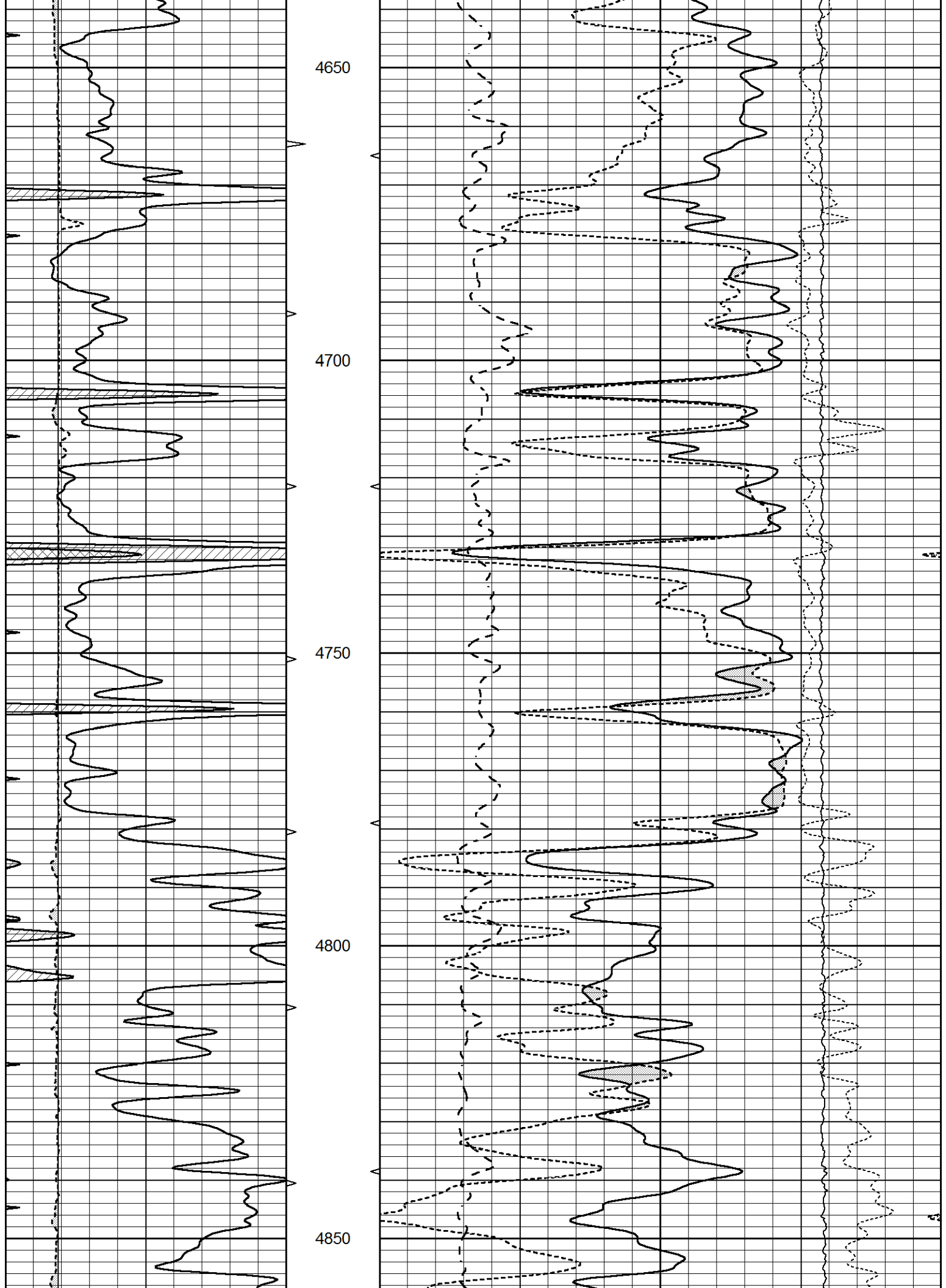


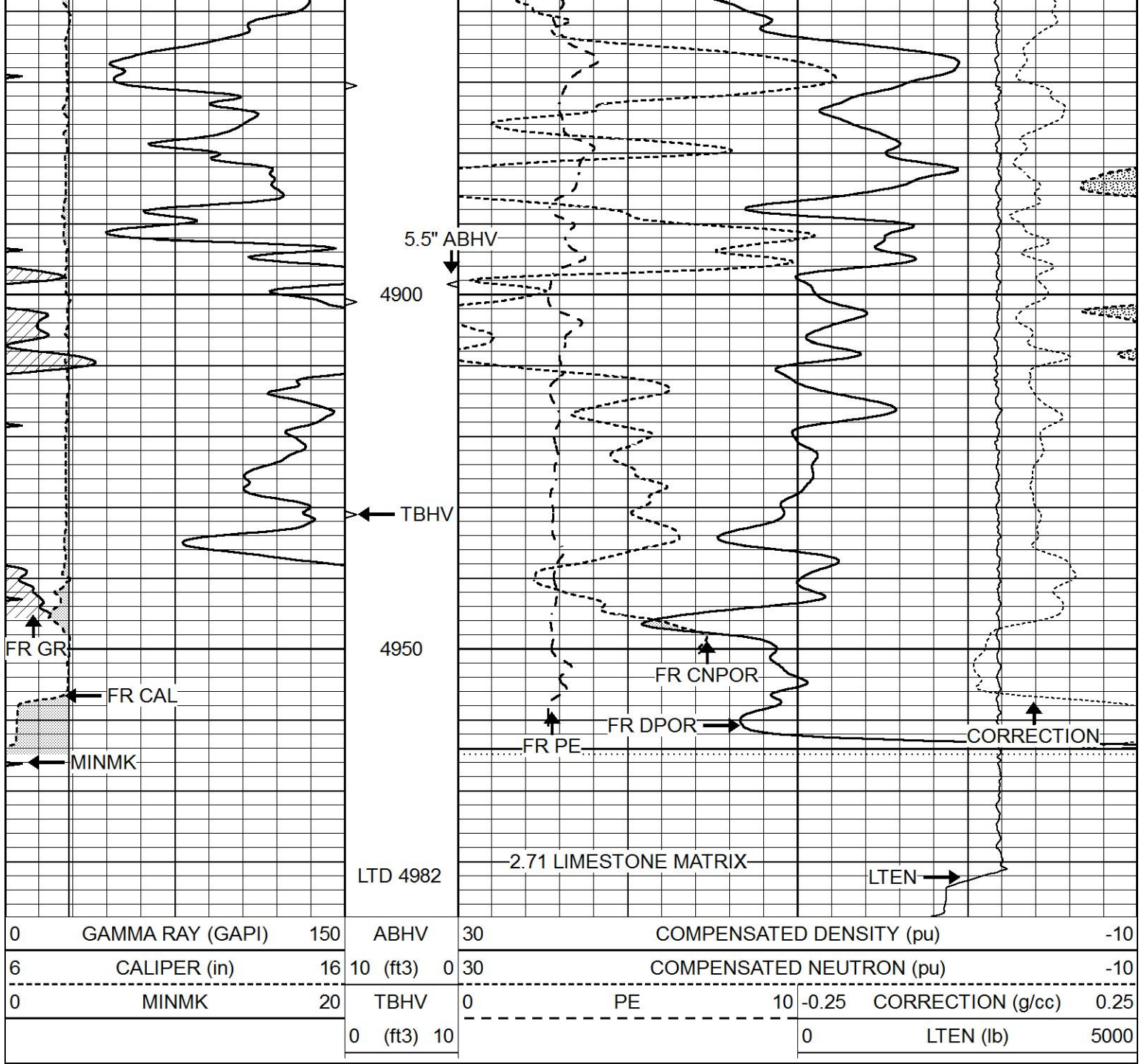


4200  
4250  
4300  
4350  
4400





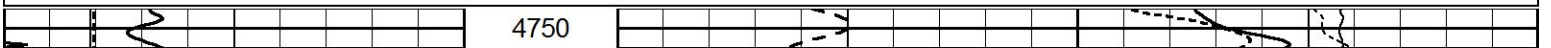


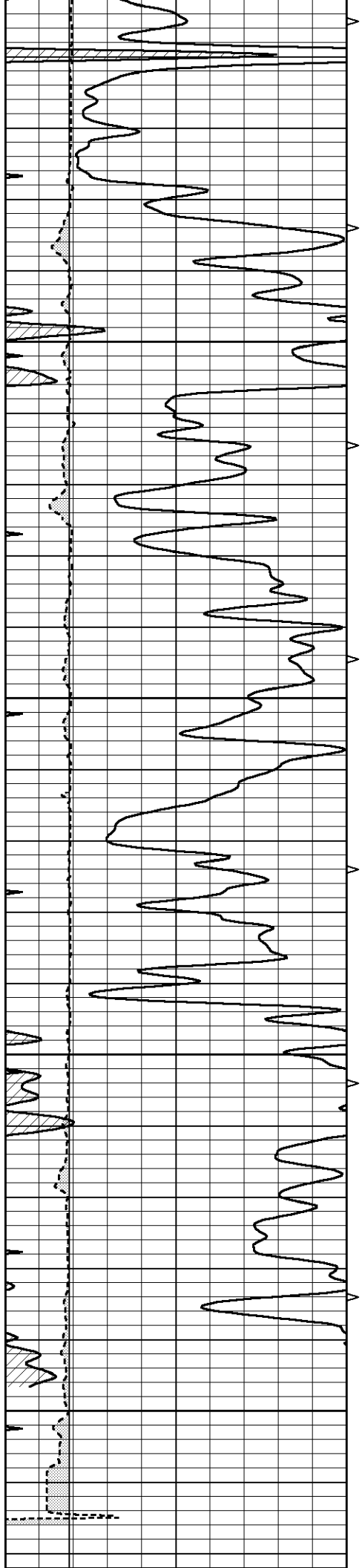


# REPEAT SECTION

Database File 7590pe.db  
 Dataset Pathname pass2R  
 Presentation Format \_ldt\_neu  
 Dataset Creation Fri Jun 02 16:26:43 2023  
 Charted by Depth in Feet scaled 1:240

0	GAMMA RAY (GAPI)	150	ABHV	30	COMPENSATED DENSITY (pu)	-10	
6	CALIPER (in)	16	10 (ft3)	0 30	COMPENSATED NEUTRON (pu)	-10	
0	MINMK	20	TBHV	0	PE	10 -0.25	
			0 (ft3)	10		CORRECTION (g/cc)	0.25
						LTEN (lb)	5000



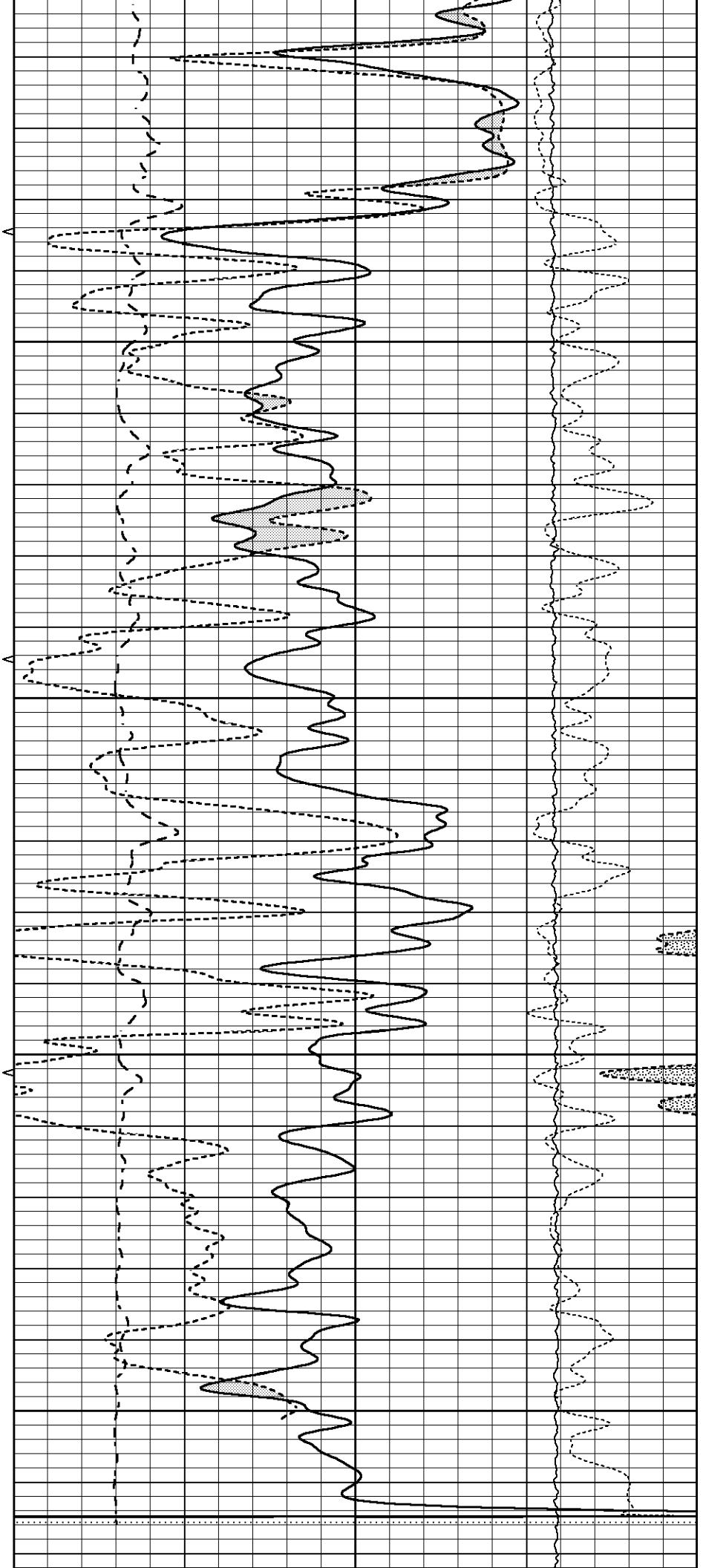


4800

4850

4900

4950



0	GAMMA RAY (GAPI)	150	ABHV	30	COMPENSATED DENSITY (pu)				-10	
6	CALIPER (in)	16	10 (ft3)	0	30	COMPENSATED NEUTRON (pu)				-10
0	MINMK	20	TBHV	0	PE	10	-0.25	CORRECTION (g/cc)	0.25	
			0 (ft3)	10			0	LTEN (lb)	5000	

**Calibration Report**

Database File 7590pe.db  
 Dataset Pathname pass3.13  
 Dataset Creation Fri Jun 02 16:02:13 2023

**Dual Induction Calibration Report**

Serial-Model: FW1410-55-Probe  
 Surface Cal Performed: Sun Apr 02 09:22:50 2023  
 Downhole Cal Performed: Tue Feb 19 11:44:24 2019  
 After Survey Verification Performed: Tue Feb 19 11:44:27 2019

**Surface Calibration**

Loop:	Readings			V	References			Results	
	Air	Loop			Air	Loop		m	b
Deep	0.011	0.656			1.000	400.000	mmho/m	550.000	-7.000
Medium	-0.000	0.731			1.000	464.000	mmho/m	550.000	-10.000
Internal:	Zero	Cal		Zero	Cal		m	b	
Deep	0.007	0.649			0.000	400.000	mmho/m	623.784	-4.595
Medium	0.004	0.743			0.000	464.000	mmho/m	627.284	-2.251

**Downhole Calibration**

	Readings			V	References			Results	
	Zero	Cal			Zero	Cal		m'	b'
Deep	-0.824	395.917	mmho/m		-0.976	397.550	mmho/m	1.004	-0.149
Medium	3.565	471.327	mmho/m		3.468	471.590	mmho/m	1.001	-0.099
LL3		7.503	V			1500.000	Ohm-m		
		0.001	V			20.000	Ohm-m		
		-7.481	V			3745.000	mmho-m		

**After Survey Verification**

	Readings			V	Targets			Results	
	Zero	Cal			Zero	Cal		m'	b'
Deep	0.000	0.000	mmho/m		-0.824	395.917	mmho/m	1.000	0.000
Medium	0.000	0.000	mmho/m		3.565	471.327	mmho/m	1.000	0.000
LL3		0.000	Ohm-m			1500.000	Ohm-m		
		0.000	Ohm-m			20.000	Ohm-m		
		0.000	mmho-m			3745.000	mmho-m		

**Litho Density Calibration Report**

Serial: 003 Model: PRB

**Master Calibration**

Performed Mon May 22 11:42:51 2023

Window 1	Background	Magnesium	Aluminum	Aluminum+Fe	cps
	1512.3	7465.7	2749.0	2519.6	

Window 1	1312.9	7188.7	2718.9	2318.9	cps
Window 2	1398.8	6705.7	2507.3	2313.8	cps
Window 3	1289.2	5259.5	2124.1	2009.6	cps
Window 4	351.1	351.6	351.8	353.2	cps
Long Space	0.0	5306.9	1108.5	915.0	cps
Short Space	3.3	2239.9	1441.2	1212.0	cps
Rho		1.7100	2.5900	0.0000	g/cc
Pe		2.0000	2.7500	5.7900	

Rib Angle : 44.3 Rib Slope : 0.975 Density/Spine Ratio : 0.541  
 Spine Angle : 74.3 Spine Slope : 3.551 Spine Intercept : -18.8

Before Survey Verification

Performed Wed Dec 31 18:00:00 1969

Window 1	0.0	0.0	0.0	0.0	cps
Window 2	0.0	0.0	0.0	0.0	cps
Window 3	0.0	0.0	0.0	0.0	cps
Window 4	0.0	0.0	0.0	0.0	cps
Long Space	0.0	0.0	0.0	0.0	cps
Short Space	0.0	0.0	0.0	0.0	cps
Measured Rho		0.0000	0.0000	0.0000	g/cc
Measured Correction		0.0000	0.0000	0.0000	g/cc
Measured Pe			0.0000	0.0000	

After Survey Verification

Performed Wed Dec 31 18:00:00 1969

Window 1	0.0	0.0	0.0	0.0	cps
Window 2	0.0	0.0	0.0	0.0	cps
Window 3	0.0	0.0	0.0	0.0	cps
Window 4	0.0	0.0	0.0	0.0	cps
Long Space	0.0	0.0	0.0	0.0	cps
Short Space	0.0	0.0	0.0	0.0	cps
Measured Rho		0.0000	0.0000	0.0000	g/cc
Measured Correction		0.0000	0.0000	0.0000	g/cc
Measured Pe			0.0000	0.0000	

Compensated Neutron Calibration Report

Serial Number: 080621PMC  
 Tool Model: NABORS

PRE-SURVEY VERIFICATION

Detector	Readings	Measured	Target
Short Space	cps		
Long Space	cps	pu	pu

POST-SURVEY VERIFICATION

Detector	Readings	Measured	Target
Short Space	cps		
Long Space	cps	pu	pu

Gamma Ray Calibration Report

Serial Number: 46001  
 Tool Model: Probe1  
 Performed: Thu Apr 20 09:55:57 2023

Calibrator Value:	1.0	GAPI
Background Reading:	0.0	cps
Calibrator Reading:	1.0	cps
Sensitivity:	0.4300	GAPI/cps