

MICRO LOG



Company ARCADIAN RESOURCES, LLC.
 Well VALLIN #2-1
 Field UNNAMED
 County CHEYENNE State KANSAS

Location: API #: 15-023-21611-0000
 990' FSL & 2310' FWL
 NE - SE - SW
 SEC 2 TWP 5S RGE 37W
 Permanent Datum GROUND LEVEL Elevation 3398
 Log Measured From KELLY BUSHING 6' A.G.L
 Drilling Measured From KELLY BUSHING
 Other Services
 CDL/CNL
 PE/DIL
 Elevation
 K.B. 3404
 D.F. 3402
 G.L. 3398

Date	6/2/23		
Run Number	TWO		
Depth Driller	4982		
Depth Logger	4982		
Bottom Logged Interval	4980		
Top Log Interval	3800		
Casing Driller	8 5/8 @ 367		
Casing Logger	367		
Bit Size	7 7/8		
Type Fluid in Hole	CHEMICAL MUD	CHLORIDES 1,000 PPM	
Density / Viscosity	9.4/56		
pH / Fluid Loss	10/8.0		
Source of Sample	FLOWLINE		
Rm @ Meas. Temp	1.40 @ 77F		
Rmf @ Meas. Temp	1.05 @ 77F		
Rmc @ Meas. Temp	1.68 @ 77F		
Source of Rmf / Rmc	MEASUREMENT		
Rm @ BHT	.862 @ 125F		
Time Circulation Stopped	4 HOURS		
Time Logger on Bottom	5:00 P.M.		
Maximum Recorded Temperature	125F		
Equipment Number	8916		
Location	HAYS, KANSAS		
Recorded By	COLE ROBBEN		
Witnessed By	SEAN DEENIHAN		

<<< Fold Here >>>

All interpretations are opinions based on inferences from electrical or other measurements and we cannot and do not guarantee the accuracy or correctness of any interpretation, and we shall not, except in the case of gross or willful negligence on our part, be liable or responsible for any loss, costs, damages, or expenses incurred or sustained by anyone resulting from any interpretation made by any of our officers, agents or employees. These interpretations are also subject to our general terms and conditions set out in our current Price Schedule.

Comments

THANK YOU FOR USING ELI WIRELINE SERVICES, HAYS, KS. (785) 628-6395

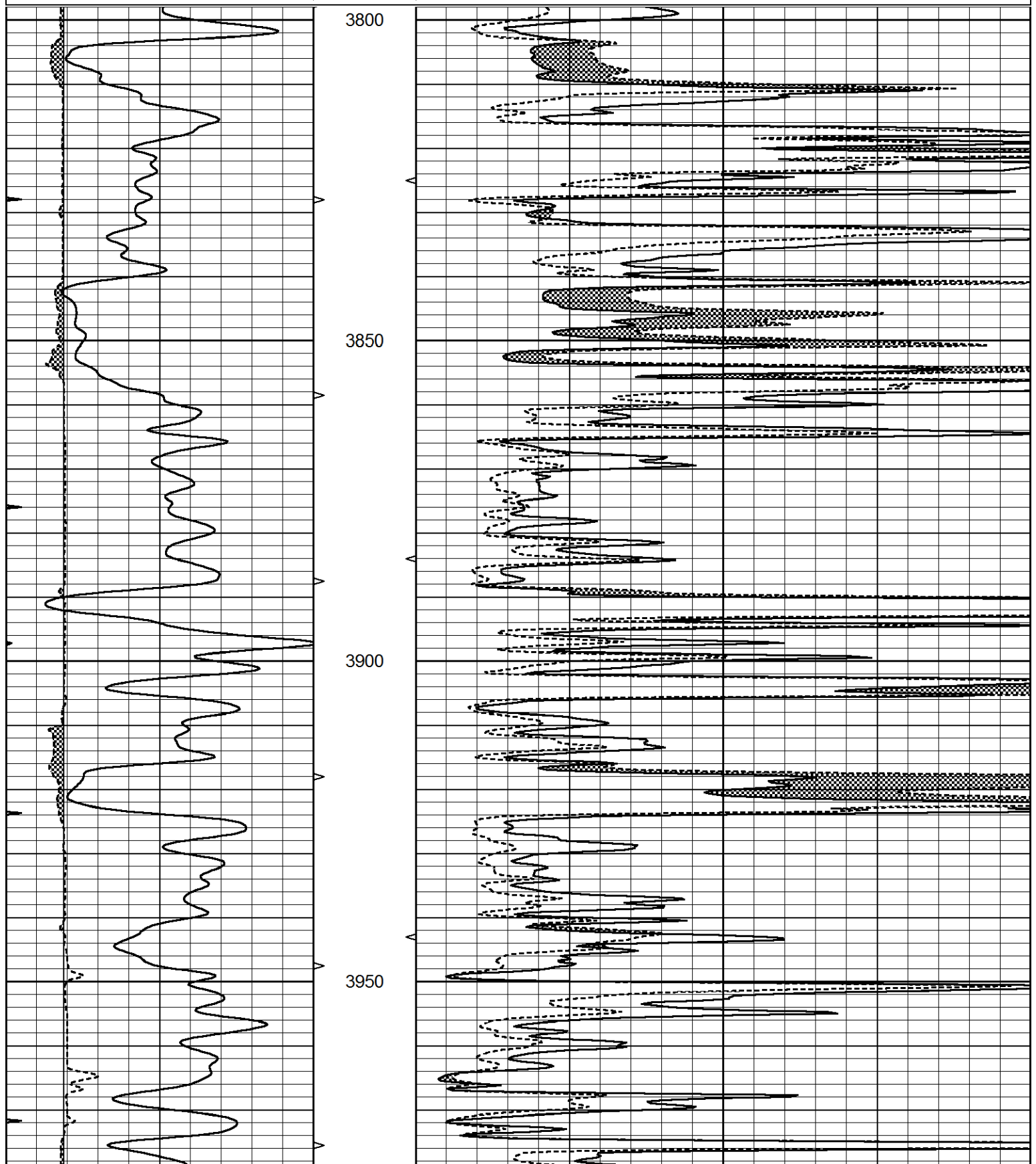
DIRECTIONS:
 FROM BREWSTER GO NORTH TO COUNTY LINE CORRECTION, WEST TO ROAD 34,
 NORTH TO ROAD 'F', WEST 1/2 MILE, NORTH INTO

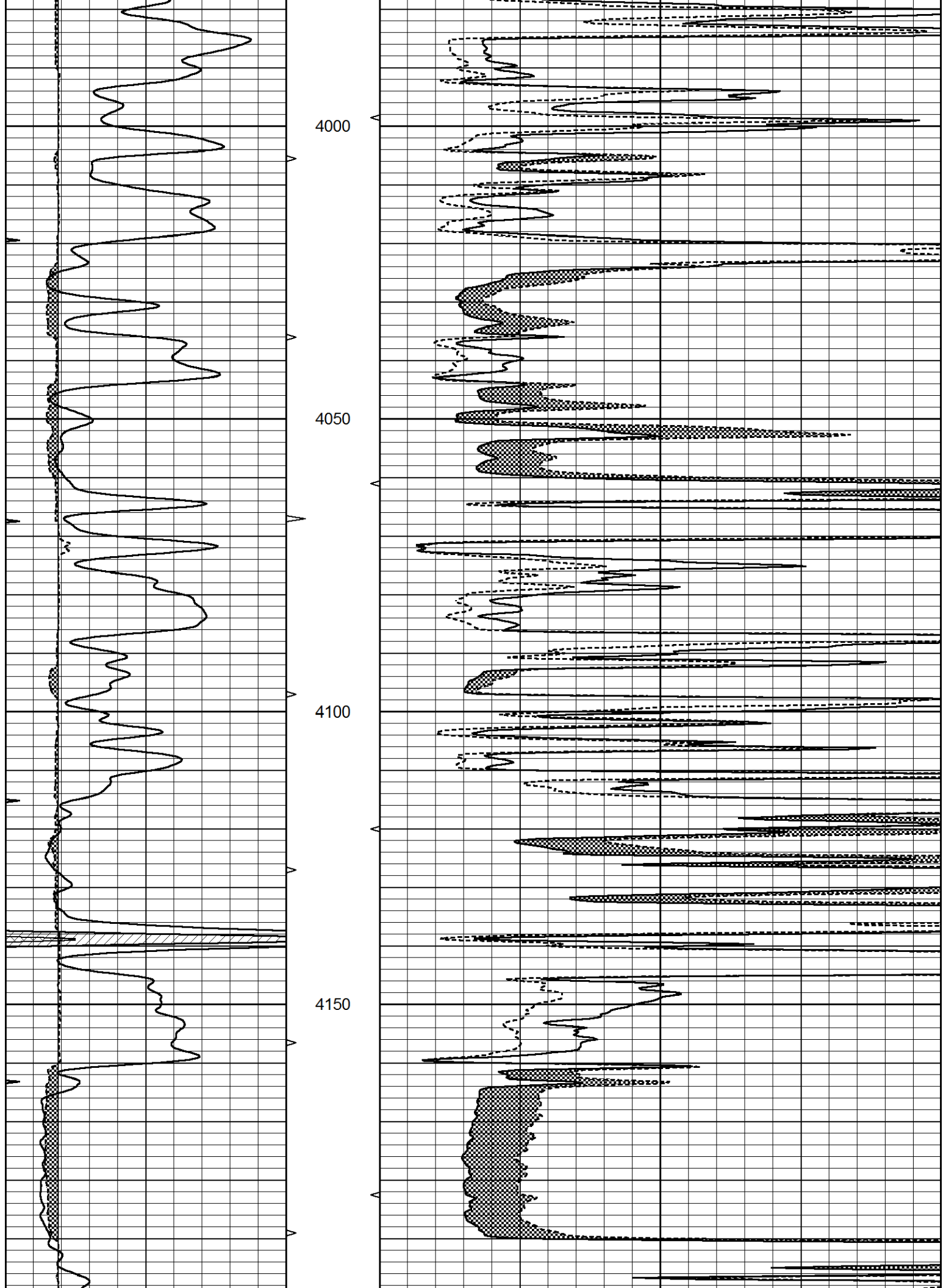


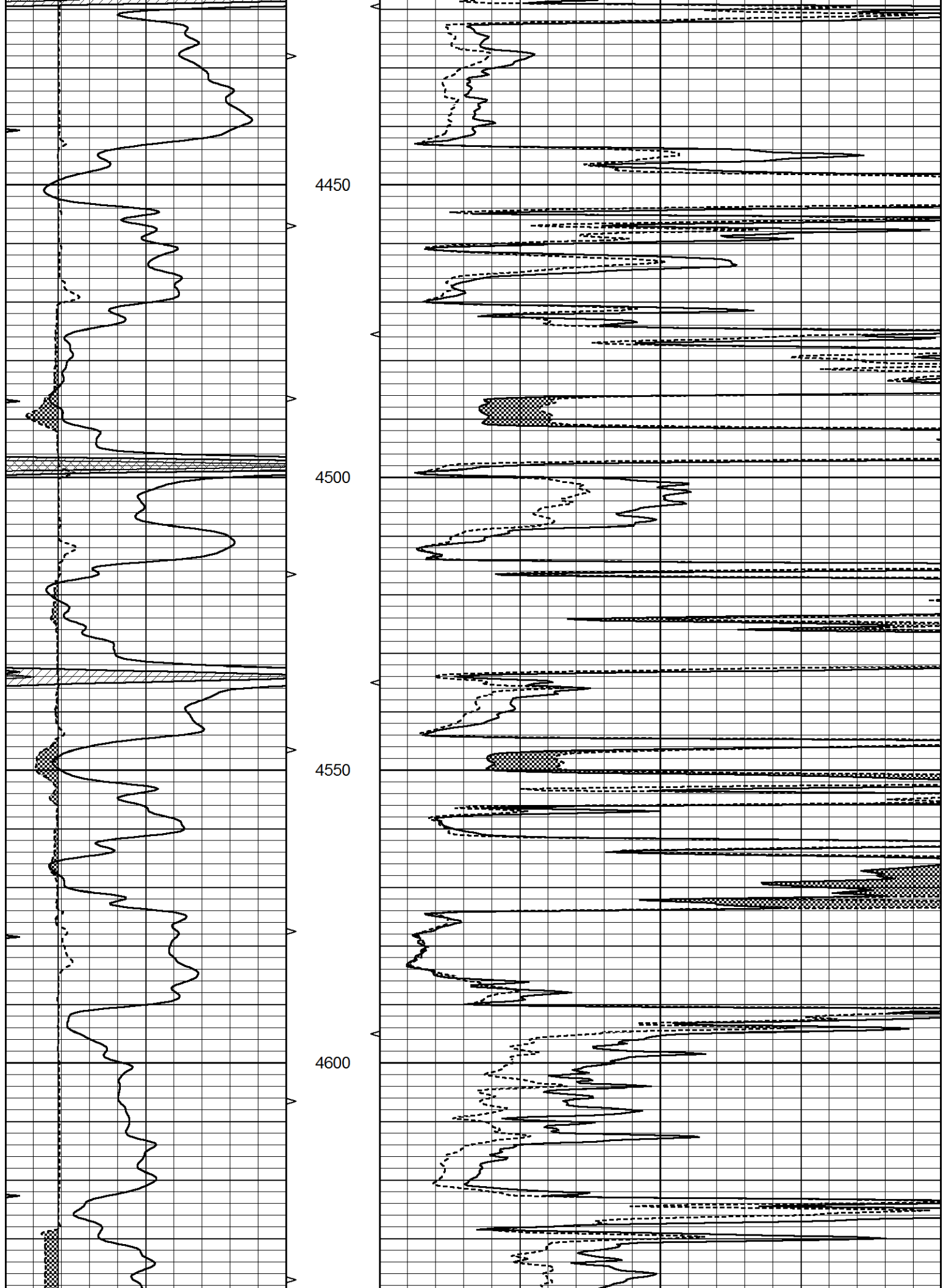
MAIN SECTION

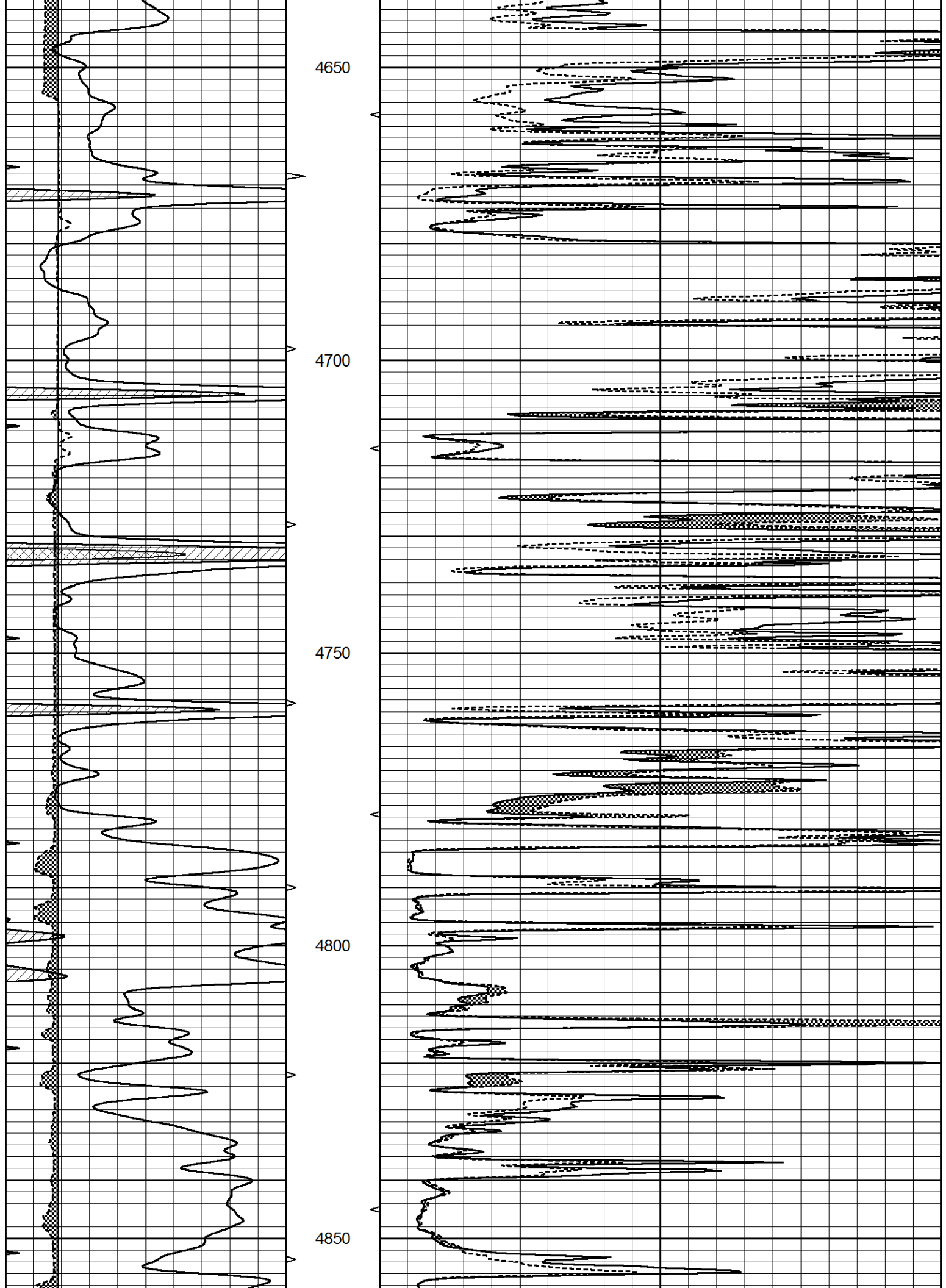
Database File 7590pe.db
 Dataset Pathname pass7D
 Presentation Format _micro
 Dataset Creation Fri Jun 02 18:01:09 2023
 Charted by Depth in Feet scaled 1:240

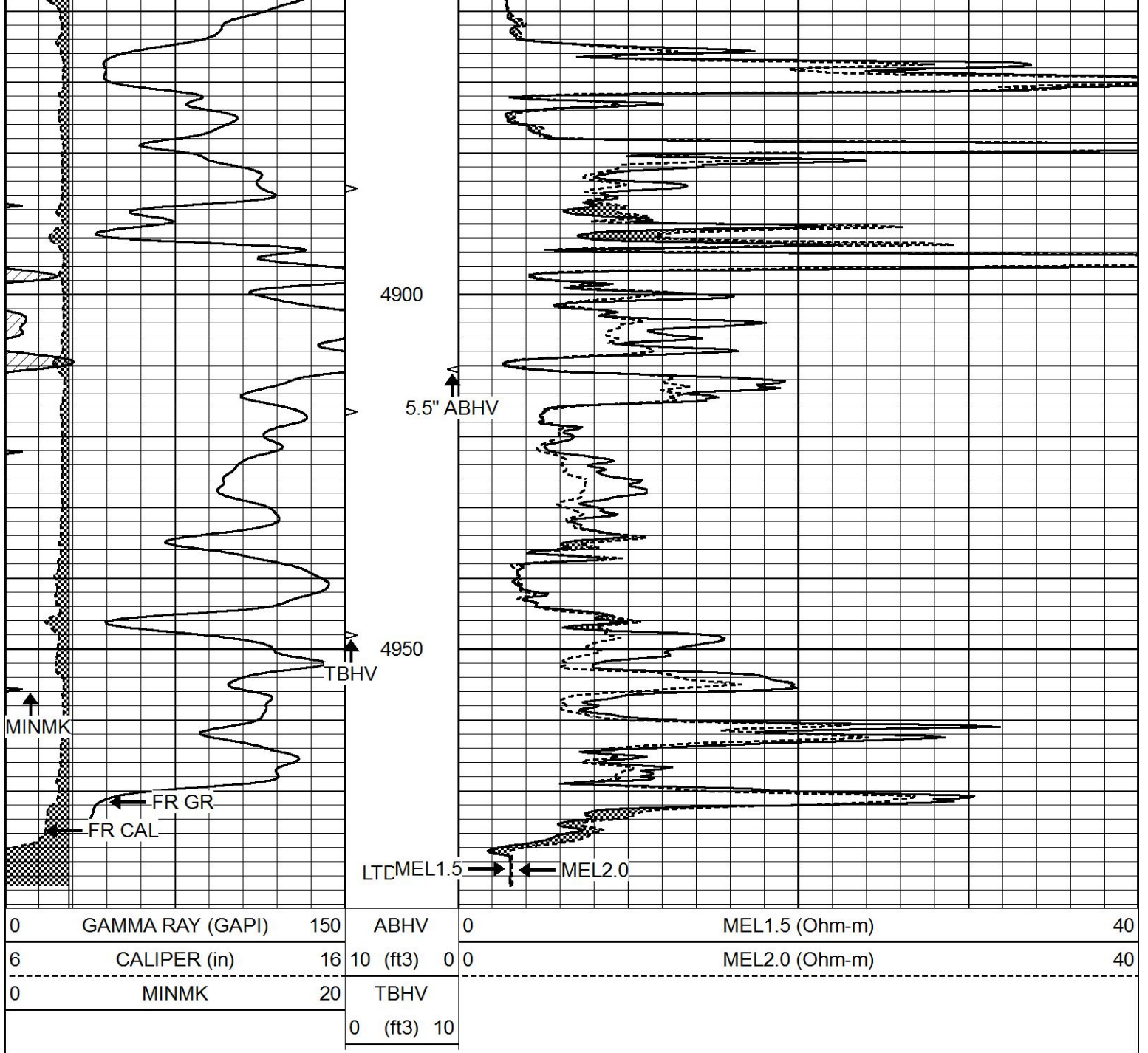
0	GAMMA RAY (GAPI)	150	ABHV	0	MEL1.5 (Ohm-m)	40
6	CALIPER (in)	16	10 (ft3)	0	MEL2.0 (Ohm-m)	40
0	MINMK	20	TBHV			
			0 (ft3)	10		







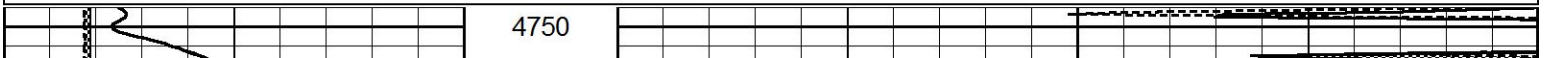


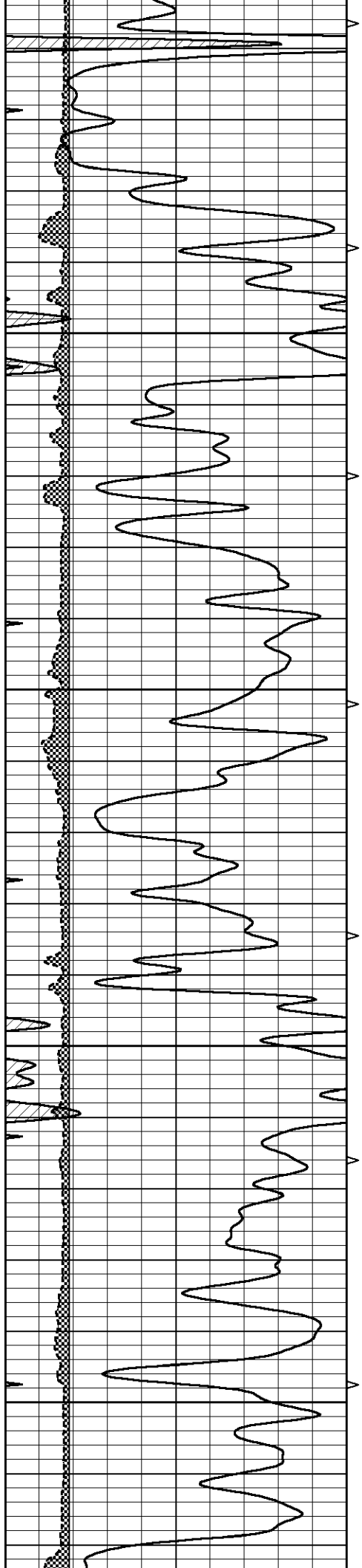


REPEAT SECTION

Database File 7590pe.db
 Dataset Pathname pass6.1
 Presentation Format _micro
 Dataset Creation Fri Jun 02 17:55:34 2023
 Charted by Depth in Feet scaled 1:240

0	GAMMA RAY (GAPI)	150	ABHV	0	MEL1.5 (Ohm-m)	40
6	CALIPER (in)	16	10 (ft3)	0 0	MEL2.0 (Ohm-m)	40
0	MINMK	20	TBHV			
			0 (ft3)	10		



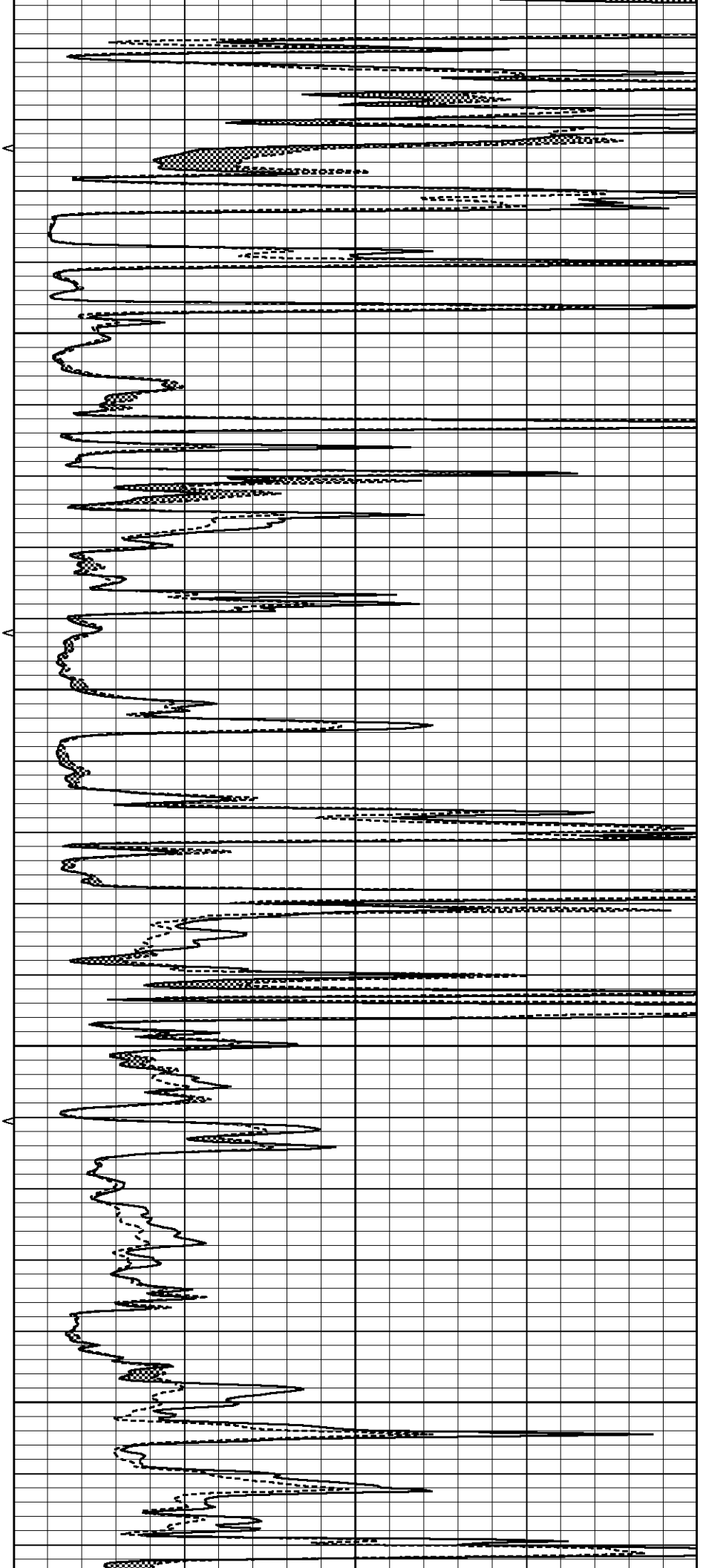


4800

4850

4900

4950



0	GAMMA RAY (GAPI)	150	ABHV	0	MEL1.5 (Ohm-m)	40
6	CALIPER (in)	16	10 (ft3)	0	MEL2.0 (Ohm-m)	40
0	MINMK	20	TBHV			
			0 (ft3)	10		

Calibration Report

Database File 7590pe.db
Dataset Pathname pass7D
Dataset Creation Fri Jun 02 18:01:09 2023

MICRO_USR Calibration Report

Serial Number: 070911
Tool Model: ProbeL
Performed: Thu Jan 19 05:57:00 2023

Caliper Calibration: Gain=4.500 Offset=0.250
References Low Cal High Cal
8.000 14.000
Readings 1.451 3.049

1.5" Calibration: Gain=30.000 Offset=-0.500
References Low Cal High Cal
0.000 20.000
Readings 0.004 0.843

2" Calibration: Gain=35.000 Offset=-0.500
References Low Cal High Cal
0.000 20.000
Readings 0.021 0.810

Microlog Calibration Report

Serial-Model: 070911-ProbeL
Performed: Sat May 14 04:48:25 2022

	Readings			References			Results	
	Zero	Cal		Zero	Cal		m	b
Normal	0.0002	0.4836	V	0.0000	10.0000	Ohm-m	20.6908	-0.0051
Inverse	0.0018	0.6297	V	0.0000	10.0000	Ohm-m	15.9263	-0.0282
Caliper	0.0000	1.0000	V	0.0000	1.0000	in	1.0000	0.0000

Gamma Ray Calibration Report

Serial Number: 070558
Tool Model: Probe1
Performed: Fri Mar 31 09:04:23 2023

Calibrator Value: 1.0 GAPI

Background Reading: 0.0 cps
Calibrator Reading: 1.0 cps

Sensitivity: 0.2700 GAPI/cps