



DUAL INDUCTION LOG

Company ARCADIAN RESOURCES, LLC.

Well VALLIN #2-1

Field UNNAMED

County CHEYENNE State KANSAS

Location: API #: 15-023-21611-0000

990' FSL & 2310' FWL
NE - SE - SW

SEC 2 TWP 5S RGE 37W

Other Services
CDL/CNL
PE/MEI

Permanent Datum GROUND LEVEL Elevation 3398
Log Measured From KELLY BUSHING 6' A.G.L
Drilling Measured From KELLY BUSHING

Elevation

K.B. 3404
D.F. 3402
G.L. 3398

Date	6/2/23
Run Number	ONE
Depth Driller	4982
Depth Logger	4982
Bottom Logged Interval	4980
Top Log Interval	00
Casing Driller	8 5/8 @ 367
Casing Logger	367
Bit Size	7 7/8
Type Fluid in Hole	CHEMICAL MUD
Density / Viscosity	9.4/56
pH / Fluid Loss	10/8.0
Source of Sample	FLOWLINE
Rm @ Meas. Temp	1.40 @ 77F
Rmf @ Meas. Temp	1.05 @ 77F
Rmc @ Meas. Temp	1.68 @ 77F
Source of Rmf / Rmc	MEASUREMENT
Rm @ BHT	.862 @ 125F
Time Circulation Stopped	2 HOURS
Time Logger on Bottom	3:00 P.M.
Maximum Recorded Temperature	125F
Equipment Number	8916
Location	HAYS, KANSAS
Recorded By	COLE ROBBEN
Witnessed By	SEAN DEENIHAN

<<< Fold Here >>>

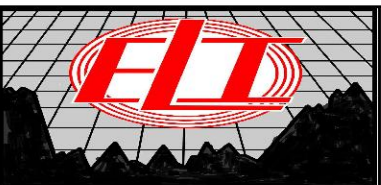
All interpretations are opinions based on inferences from electrical or other measurements and we cannot and do not guarantee the accuracy or correctness of any interpretation, and we shall not, except in the case of gross or willful negligence on our part, be liable or responsible for any loss, costs, damages, or expenses incurred or sustained by anyone resulting from any interpretation made by any of our officers, agents or employees. These interpretations are also subject to our general terms and conditions set out in our current Price Schedule.

Comments

THANK YOU FOR USING ELI WIRELINE SERVICES, HAYS, KS. (785) 628-6395

DIRECTIONS:

FROM BREWSTER GO NORTH TO COUNTY LINE CORRECTION, WEST TO ROAD 34,
NORTH TO ROAD 'F', WEST 1/2 MILE, NORTH INTO

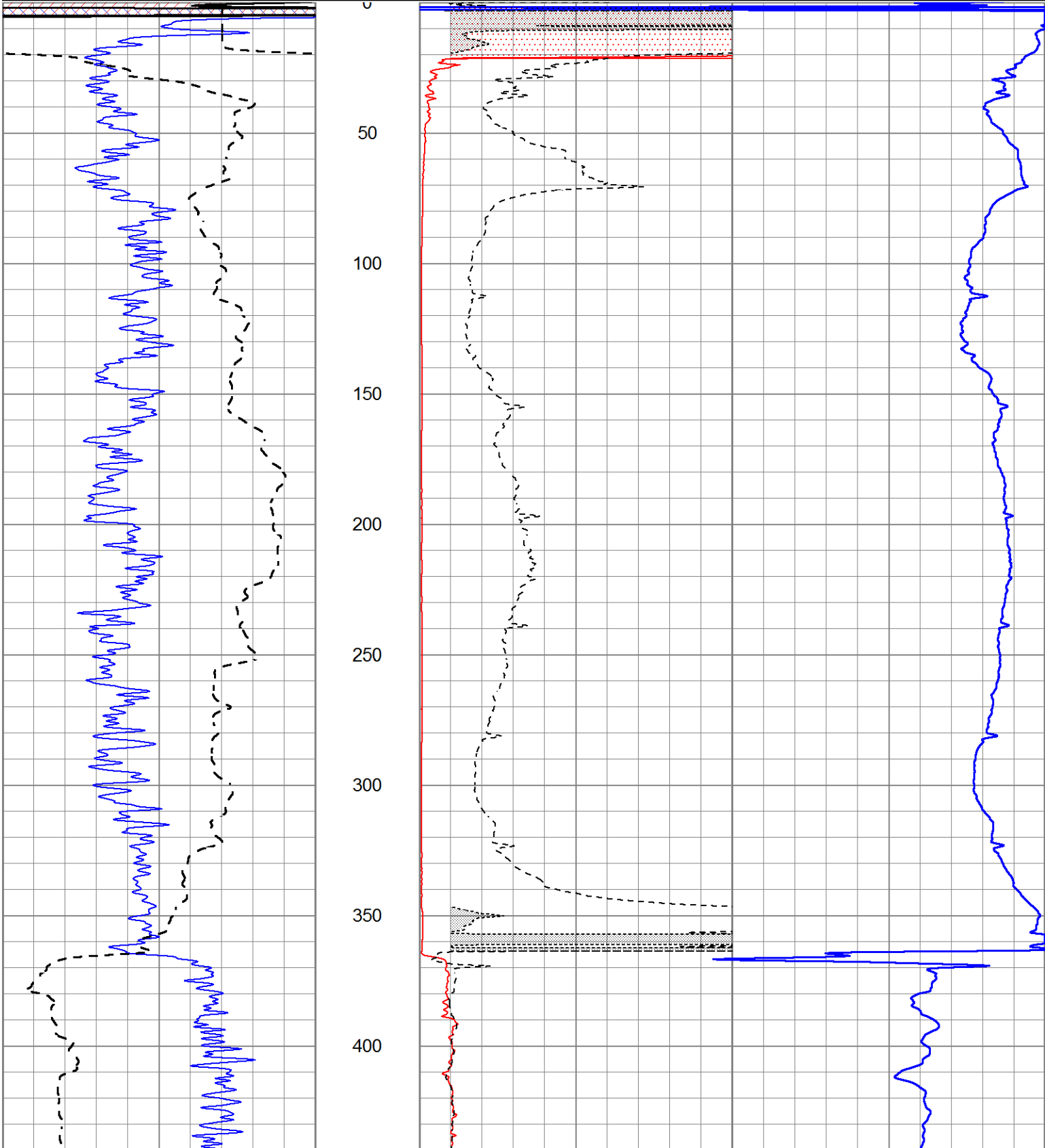


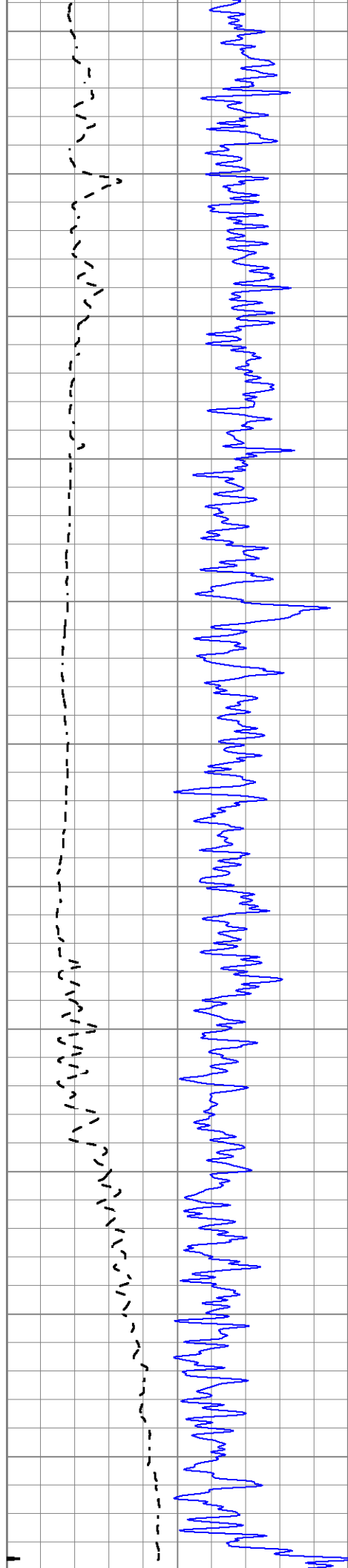
MAIN SECTION

Database File 7590pe.db
 Dataset Pathname pass3M
 Presentation Format _dil2
 Dataset Creation Fri Jun 02 16:43:07 2023
 Charted by Depth in Feet scaled 1:600

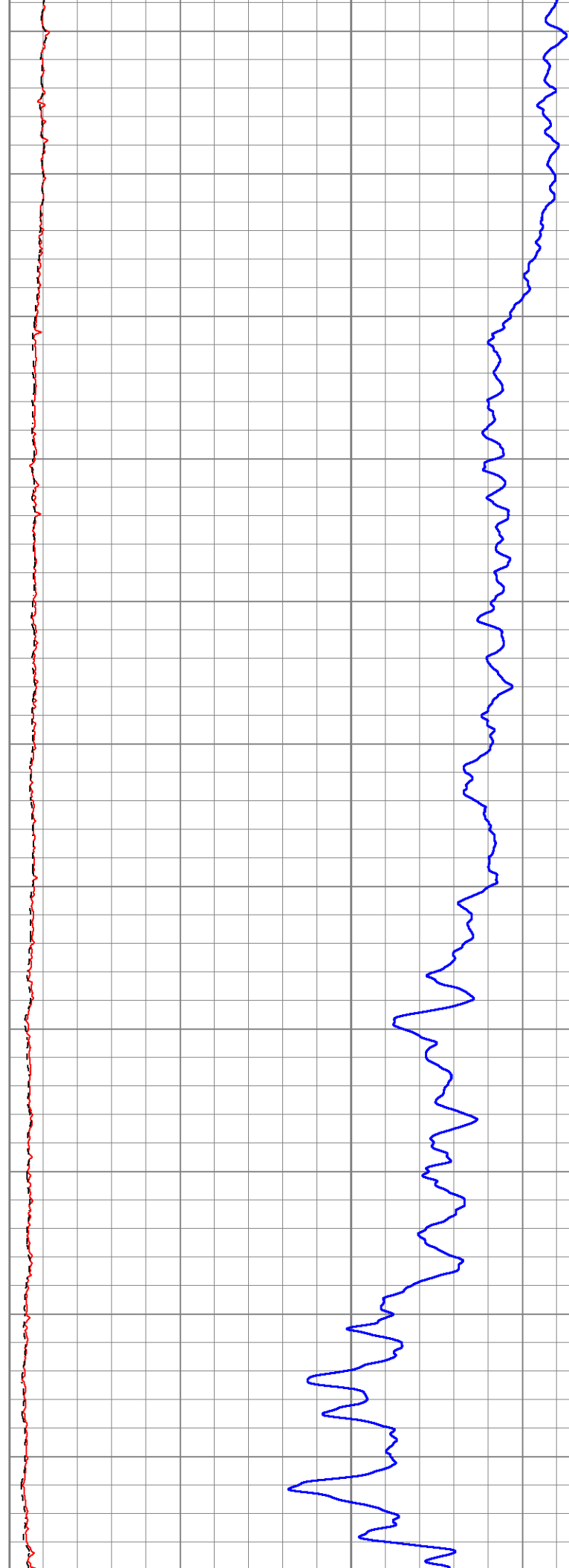
0	Gamma Ray (GAPI)	150
-100	SP (mV)	100

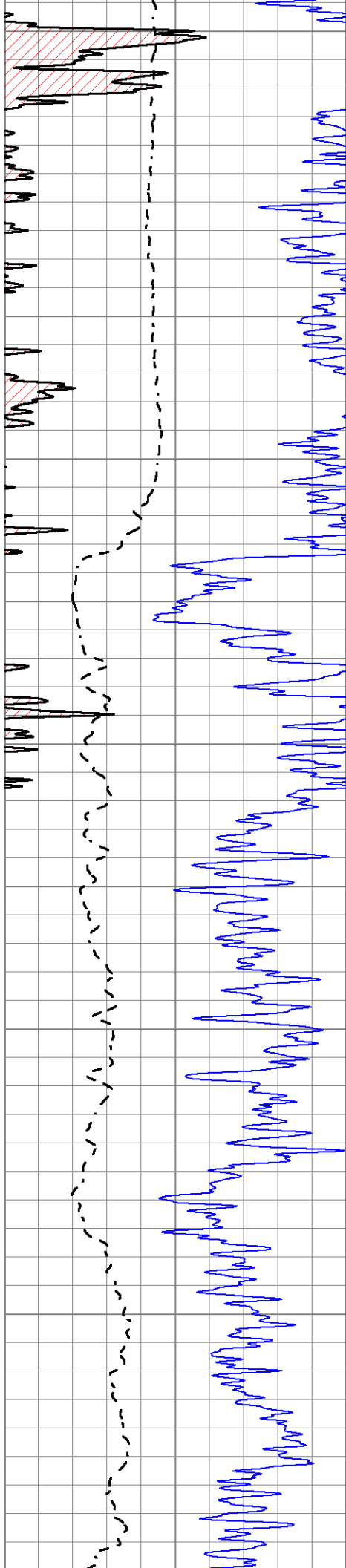
1000	CILD (mmho/m)	0
0	RLL3 (Ohm-m)	50
0	Deep Induction (Ohm-m)	50
50	RILD X10 (Ohm-m)	500
50	RLL3 X10 (Ohm-m)	500



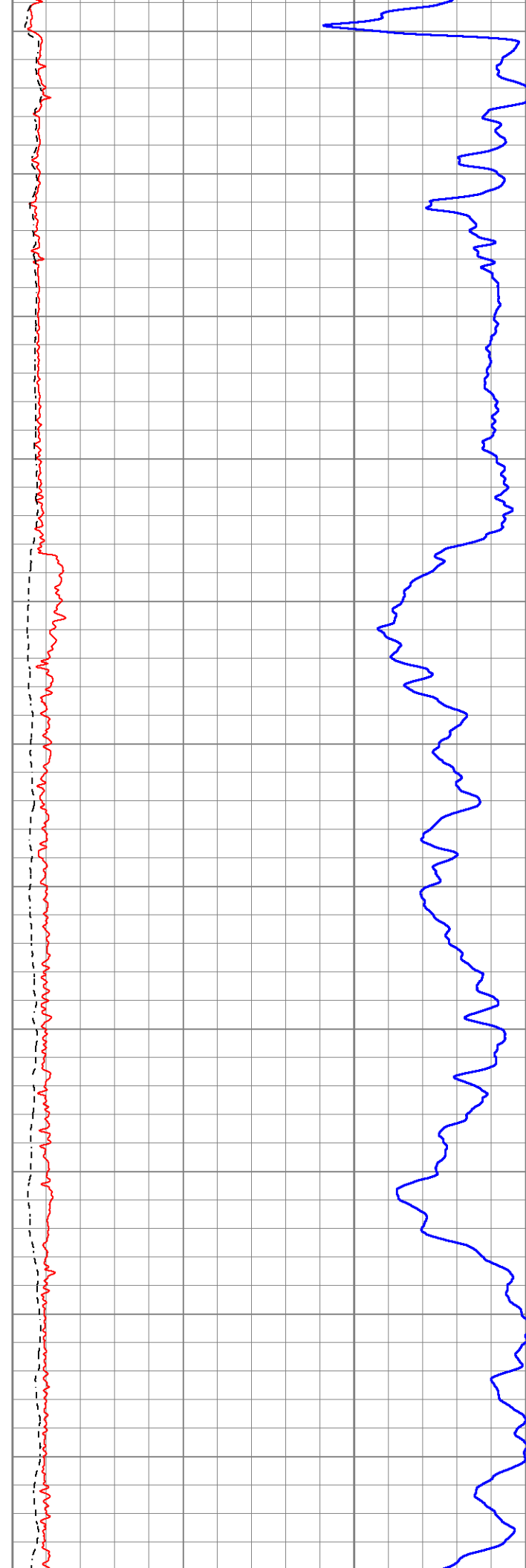


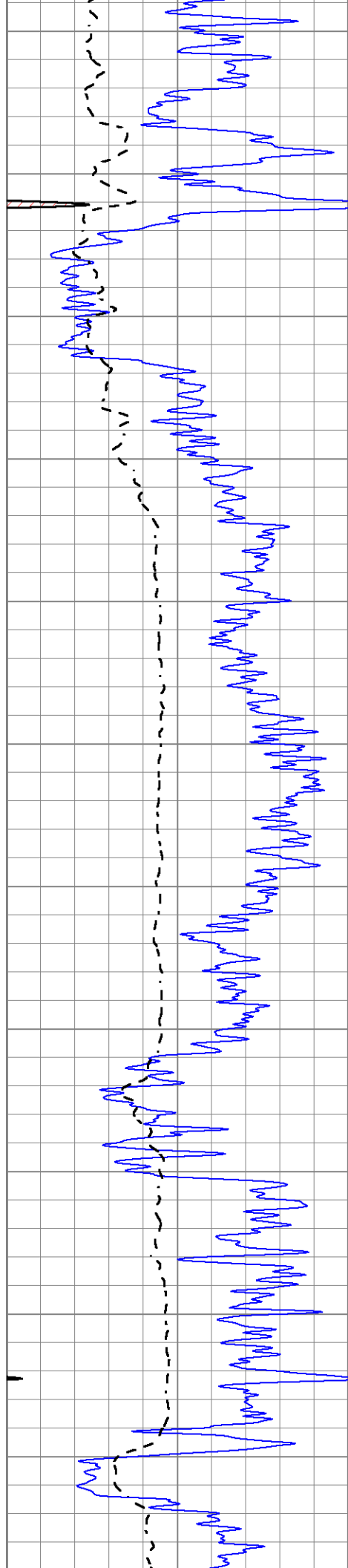
450
500
550
600
650
700
750
800
850
900
950



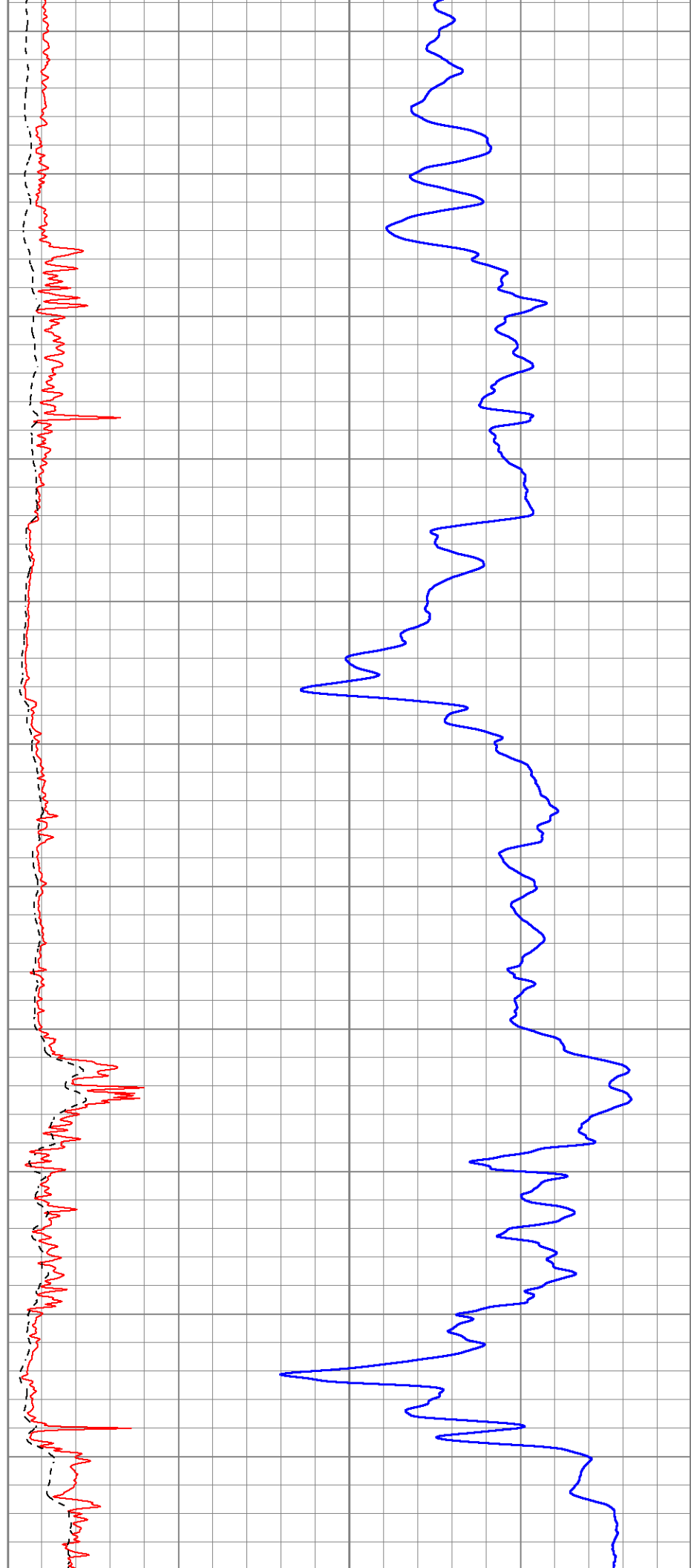


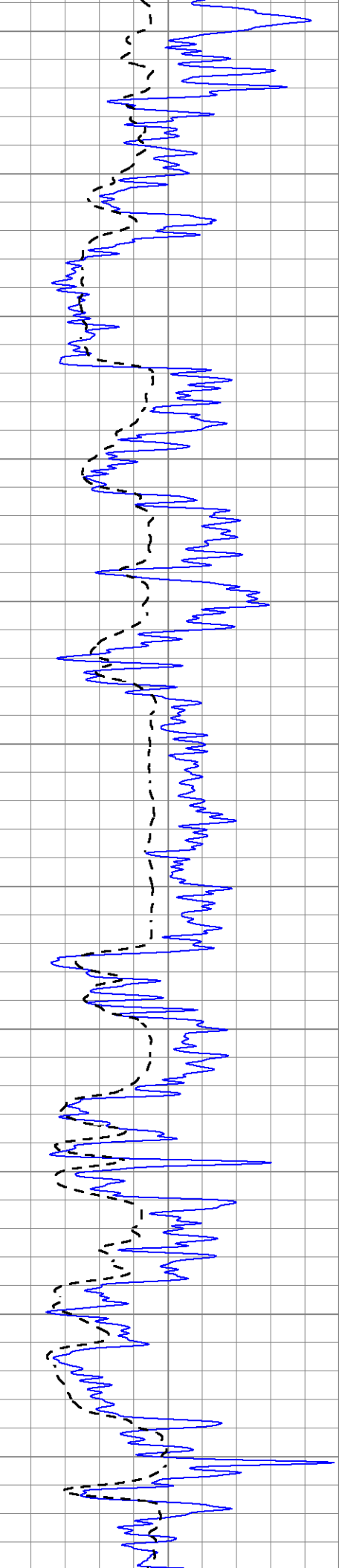
1000
1050
1100
1150
1200
1250
1300
1350
1400
1450
1500



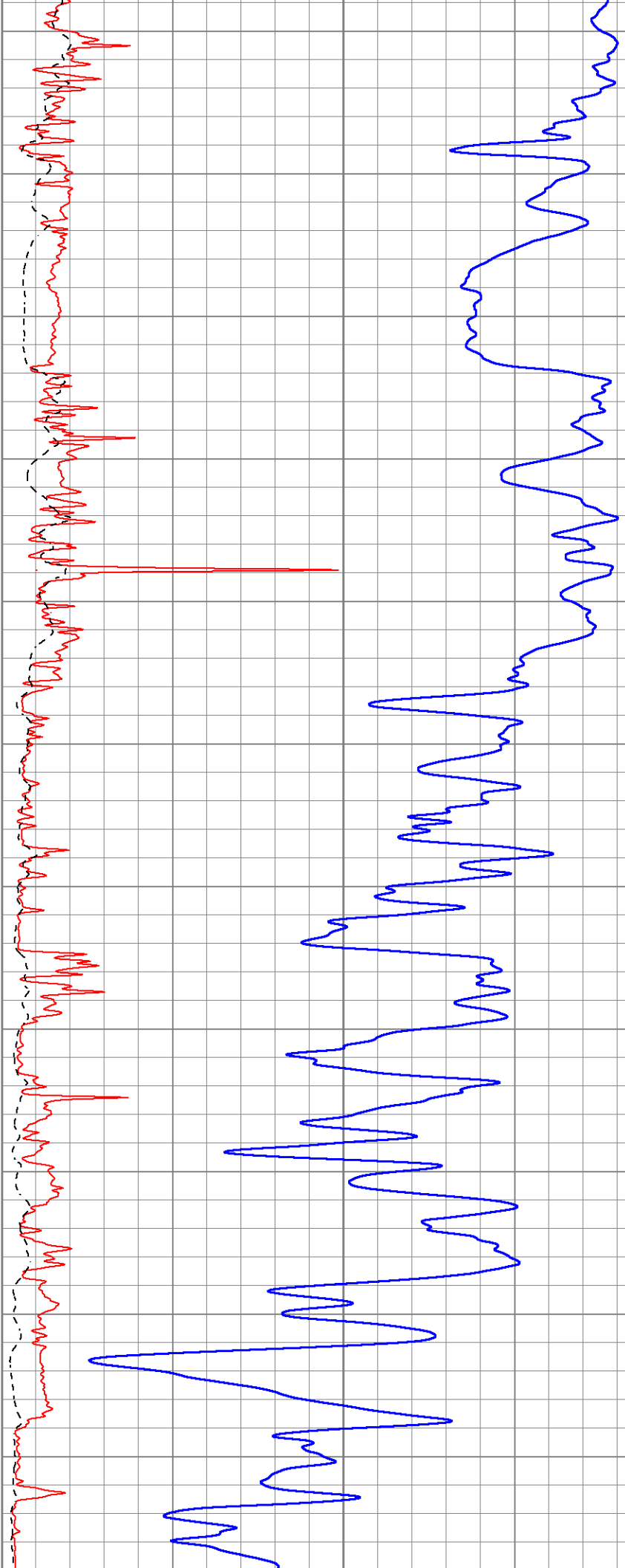


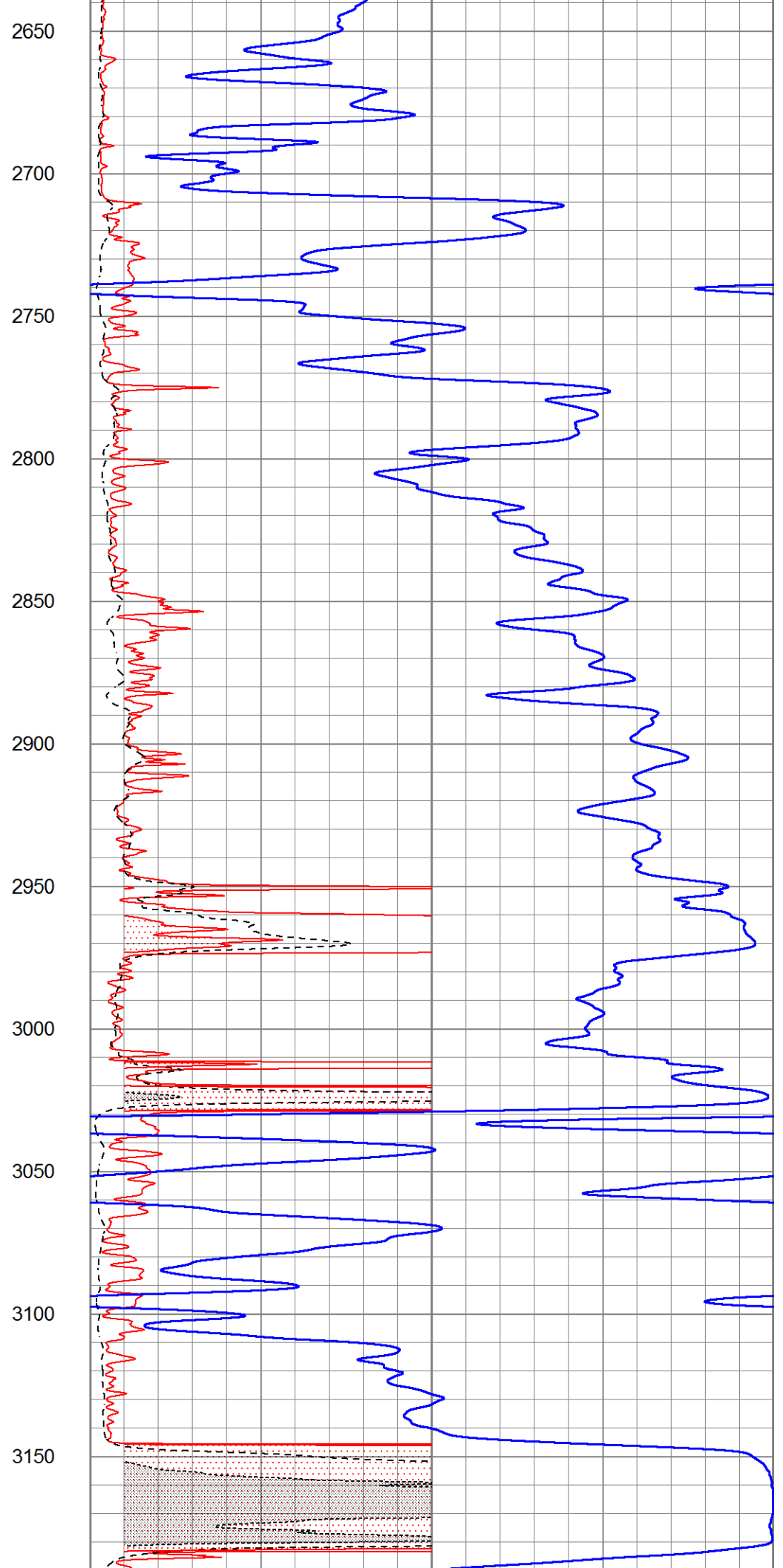
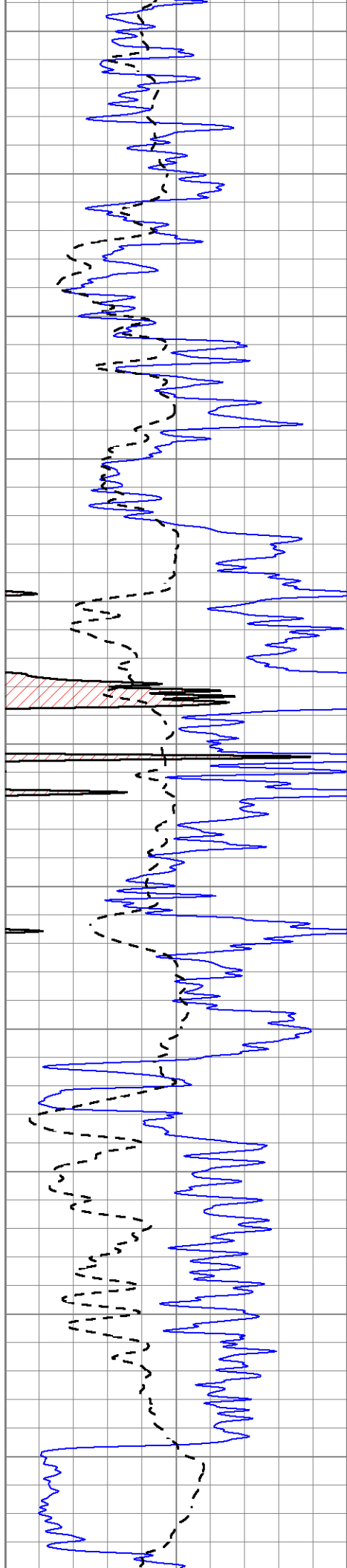
1550
1600
1650
1700
1750
1800
1850
1900
1950
2000
2050

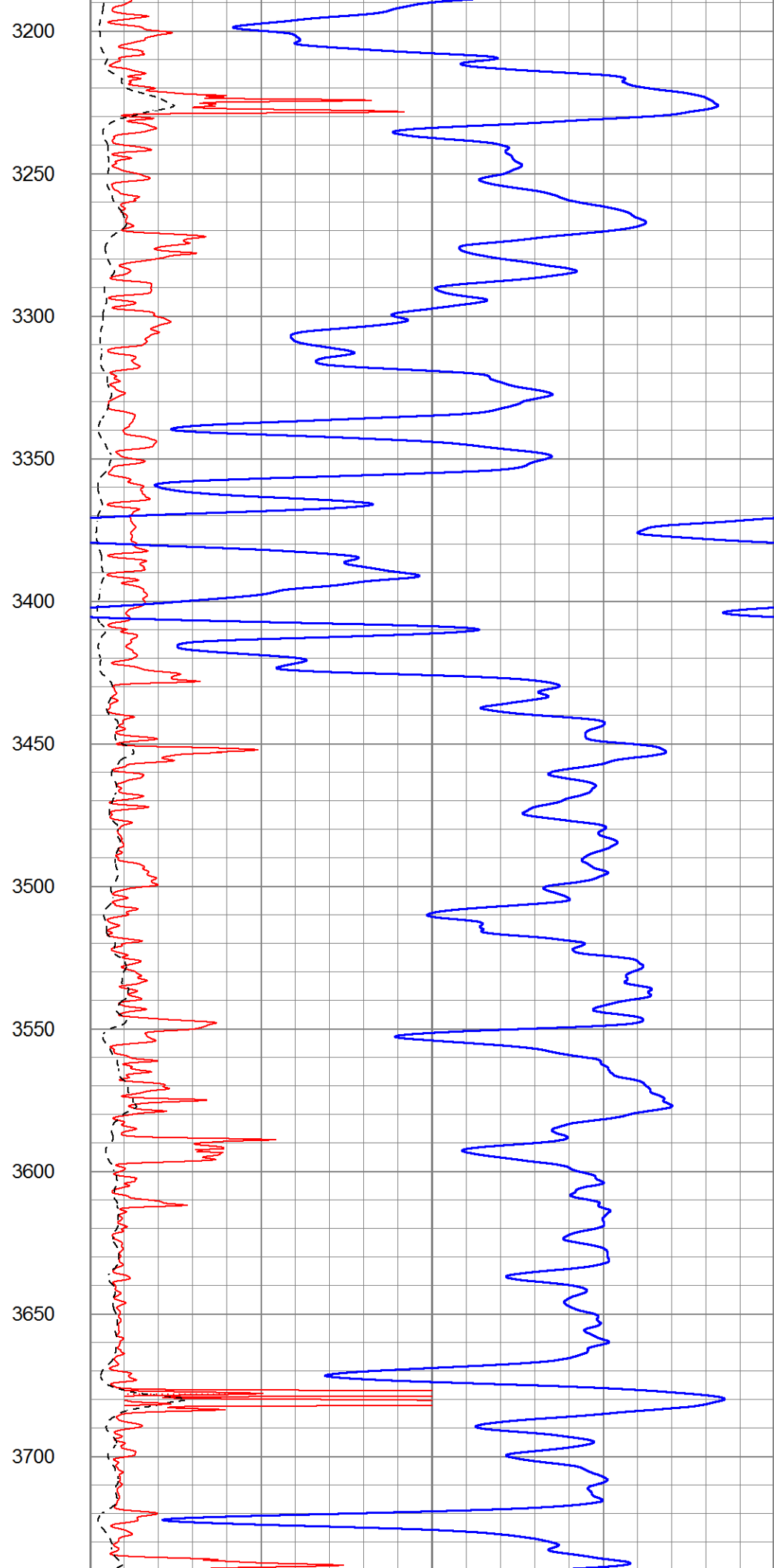
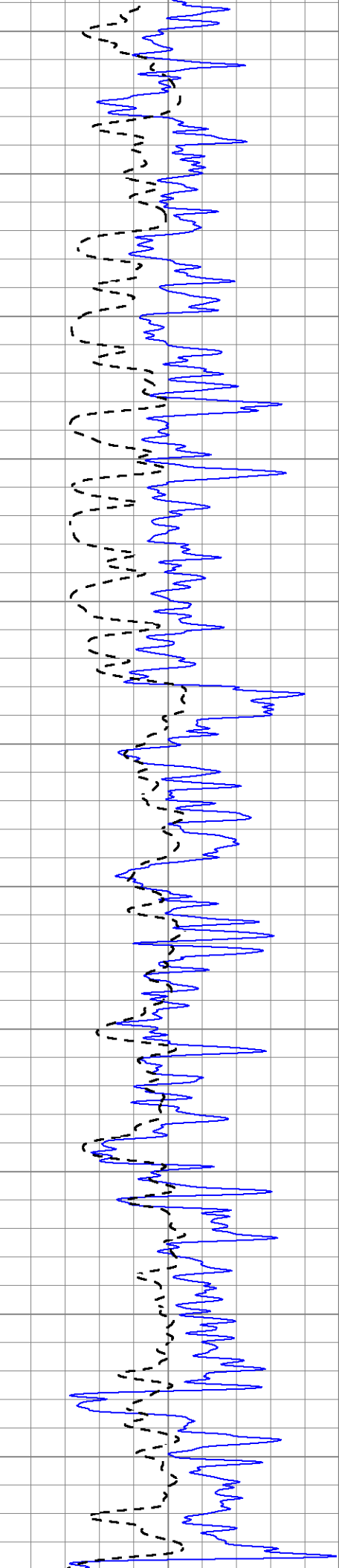


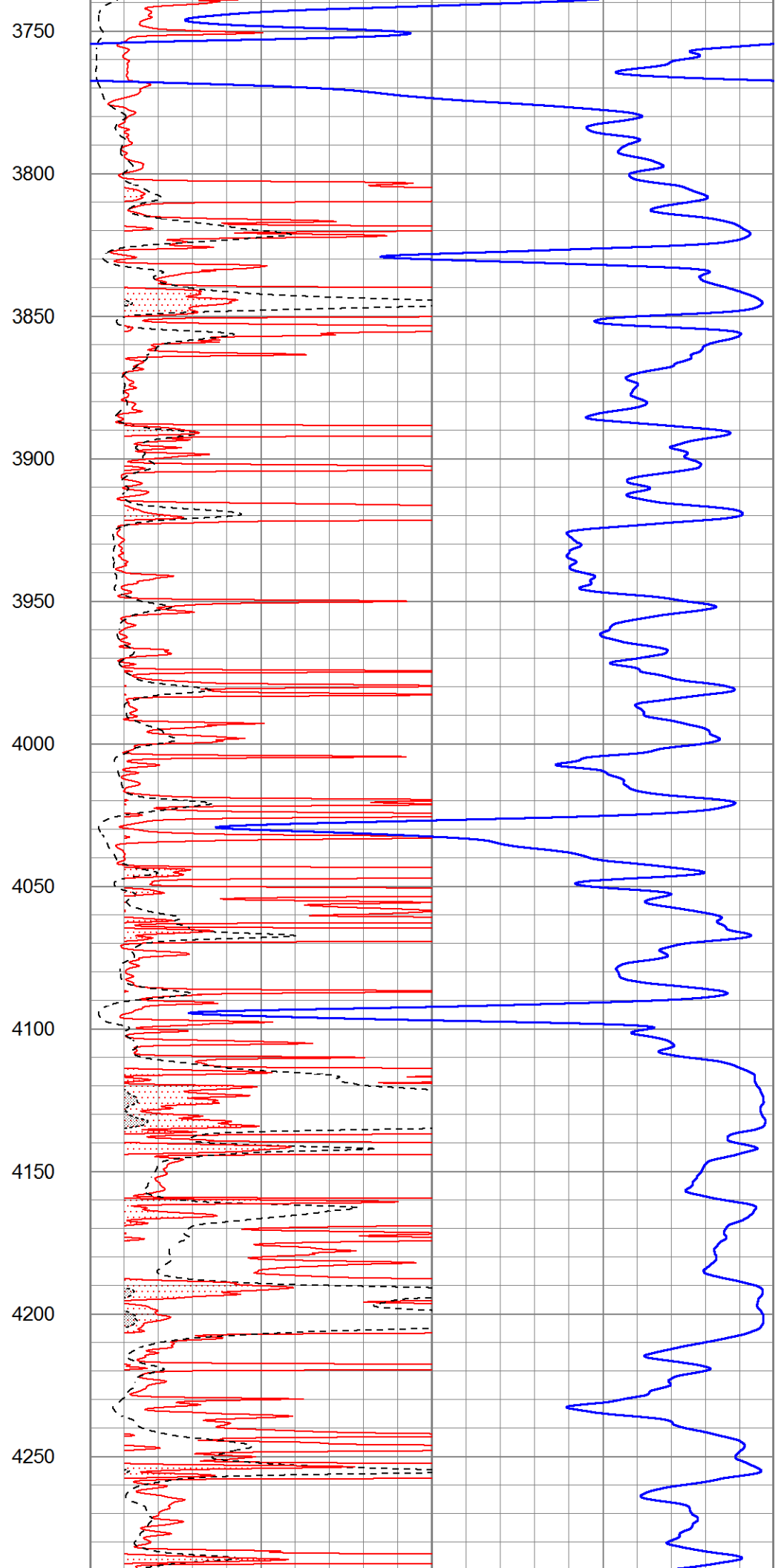
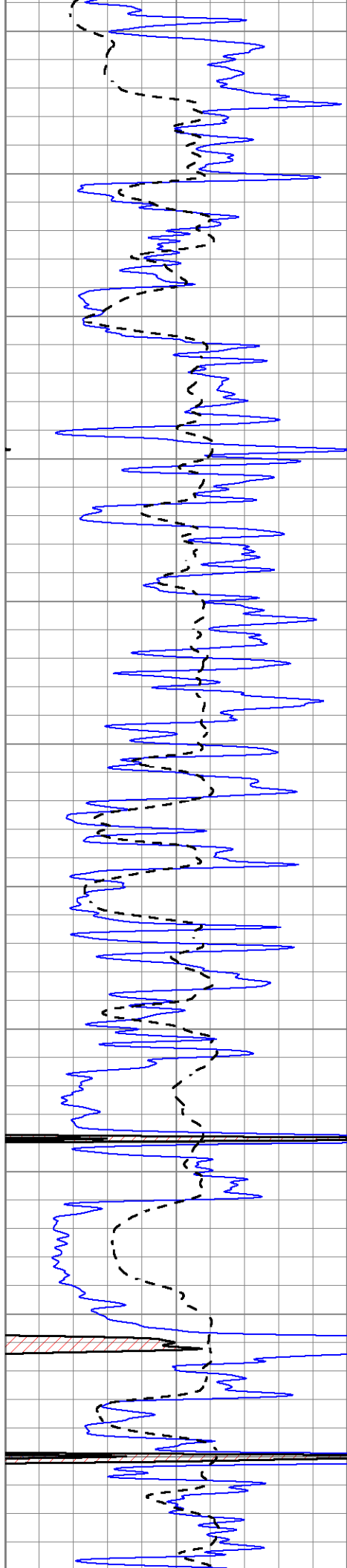


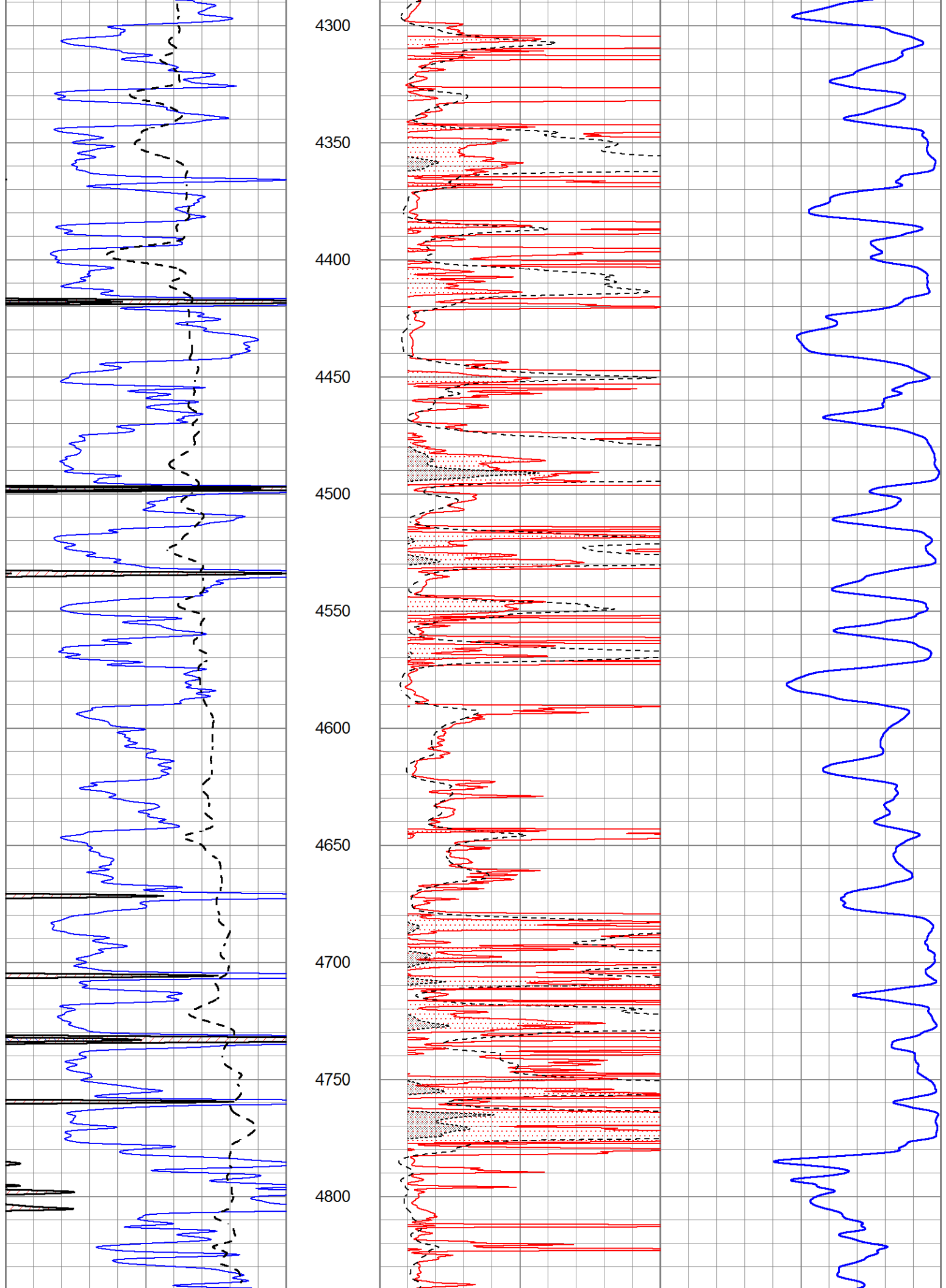
2100
2150
2200
2250
2300
2350
2400
2450
2500
2550
2600

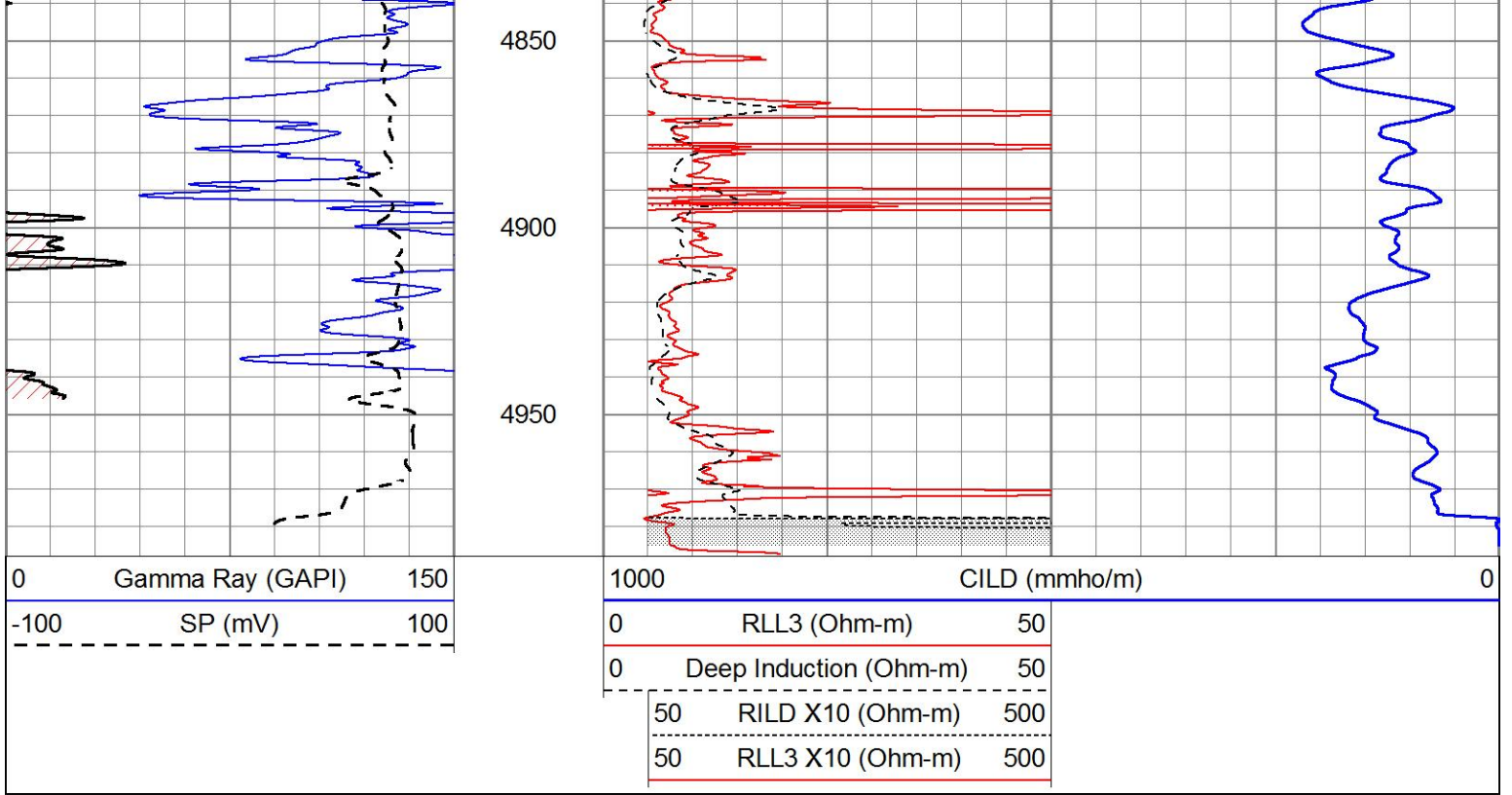








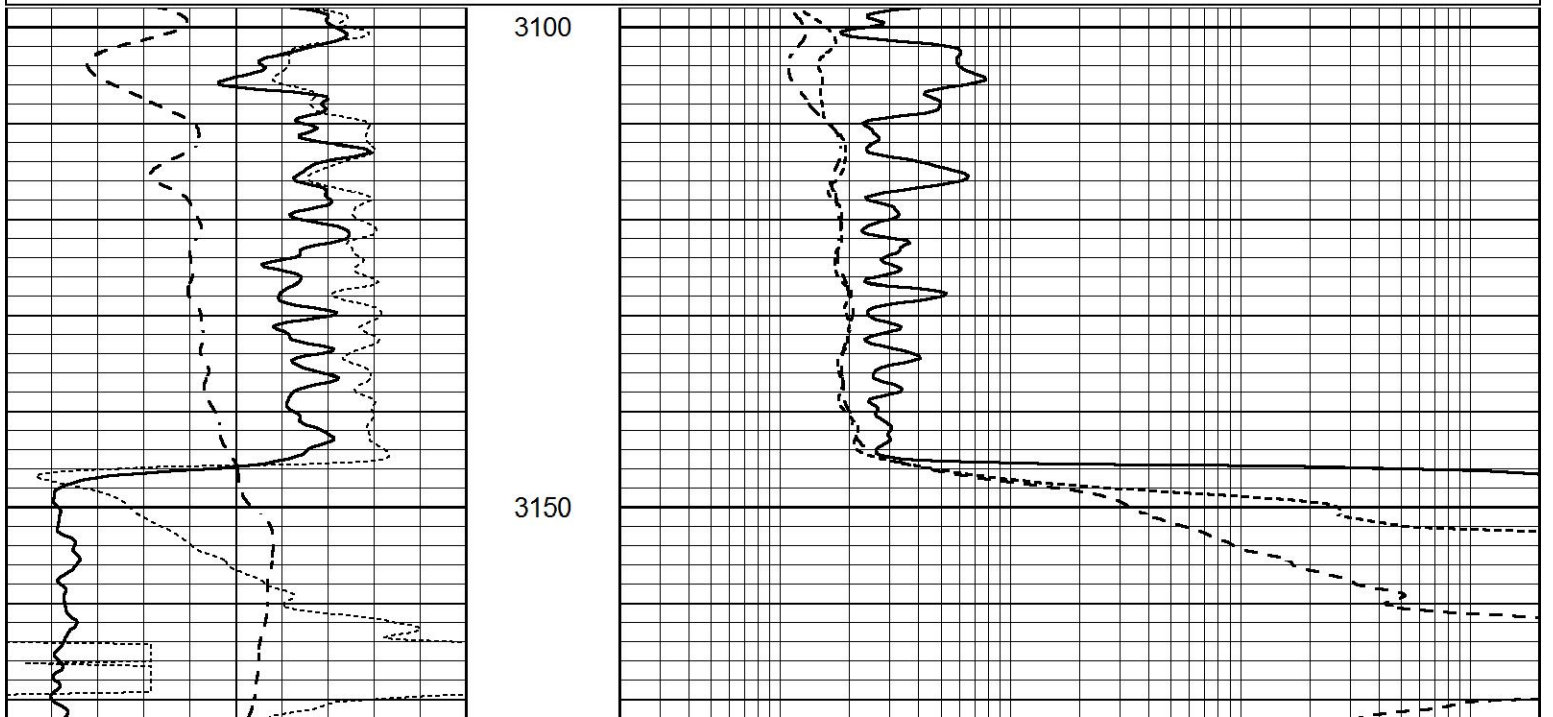


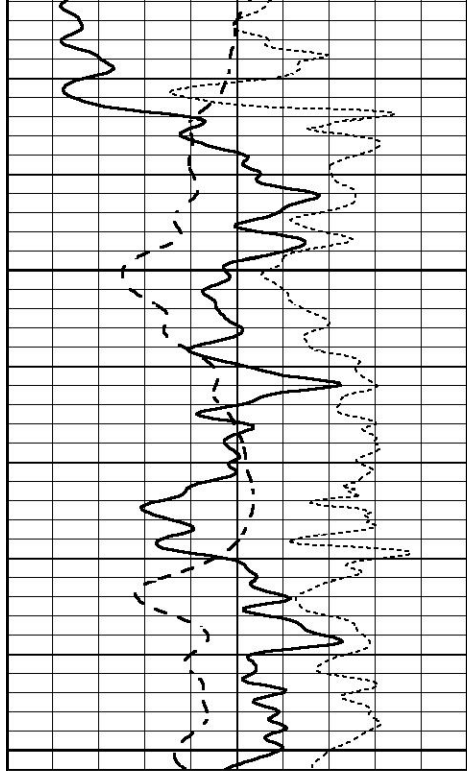


ANHYDRITE

Database File 7590pe.db
 Dataset Pathname pass3A
 Presentation Format _dil
 Dataset Creation Fri Jun 02 16:46:12 2023
 Charted by Depth in Feet scaled 1:240

0	GAMMA RAY (GAPI)	150	0.2	SHALLOW GUARD (Ohm-m)	2000
-100	SP (mV)	100	0.2	MEDIUM INDUCTION (Ohm-m)	2000
-250	Rxo/Rt	50	0.2	DEEP INDUCTION (Ohm-m)	2000

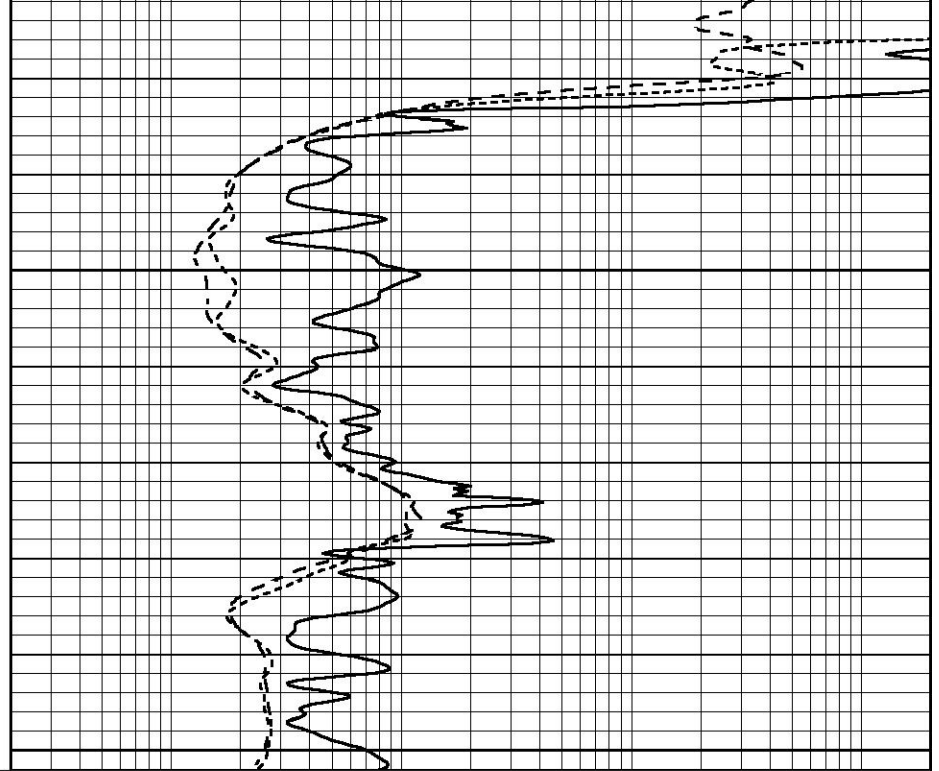




0	GAMMA RAY (GAPI)	150
-100	SP (mV)	100
-250	Rxo/Rt	50

3200

3250



0.2	SHALLOW GUARD (Ohm-m)	2000
0.2	MEDIUM INDUCTION (Ohm-m)	2000
0.2	DEEP INDUCTION (Ohm-m)	2000

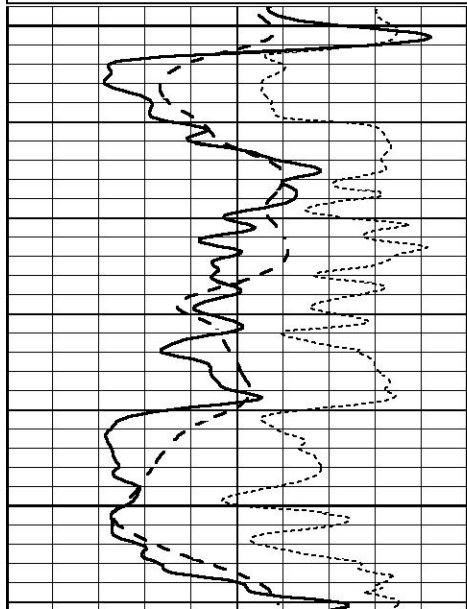


MAIN SECTION

Database File 7590pe.db
 Dataset Pathname pass3M
 Presentation Format _dil
 Dataset Creation Fri Jun 02 16:43:07 2023
 Charted by Depth in Feet scaled 1:240

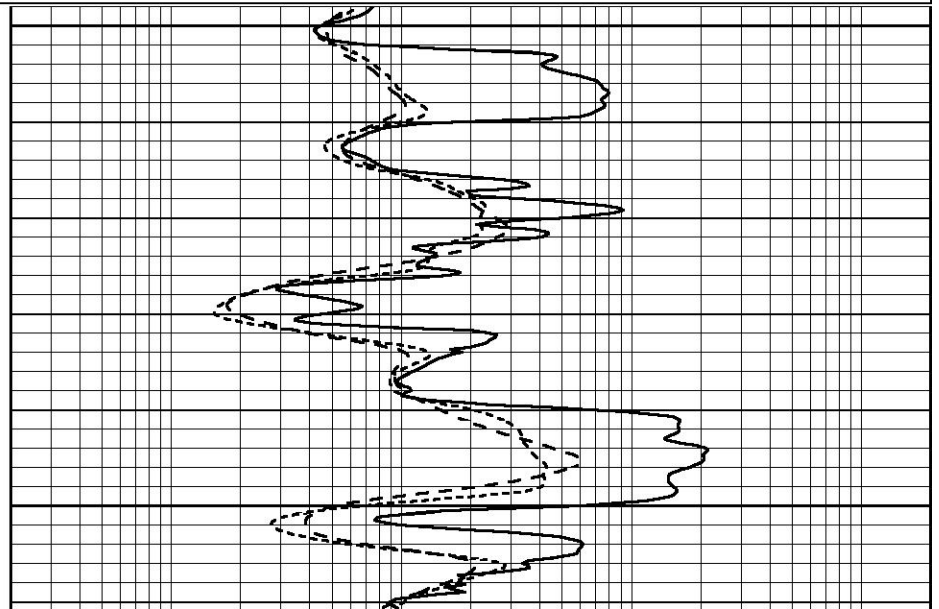
0	GAMMA RAY (GAPI)	150
-100	SP (mV)	100
-250	Rxo/Rt	50

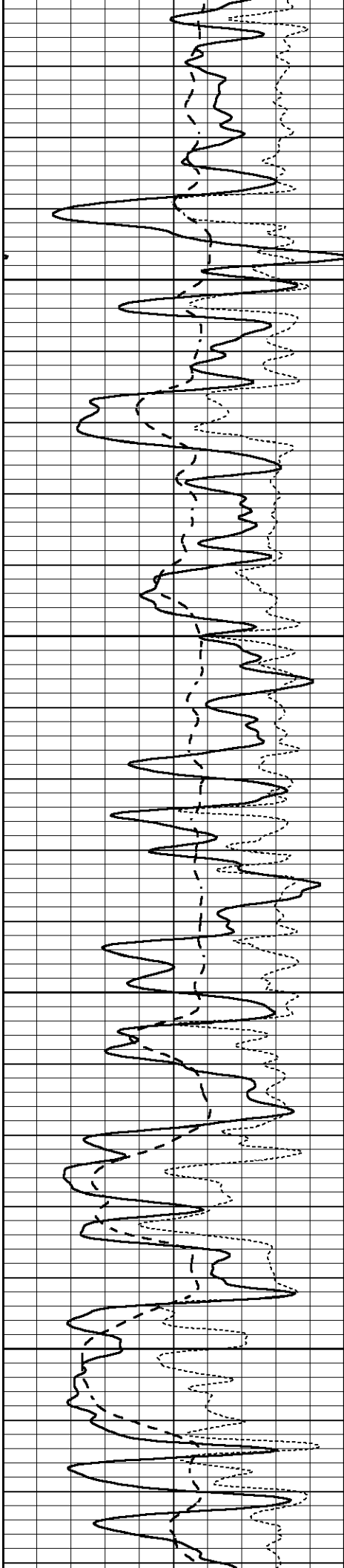
0.2	SHALLOW GUARD (Ohm-m)	2000
0.2	MEDIUM INDUCTION (Ohm-m)	2000
0.2	DEEP INDUCTION (Ohm-m)	2000



3800

3850



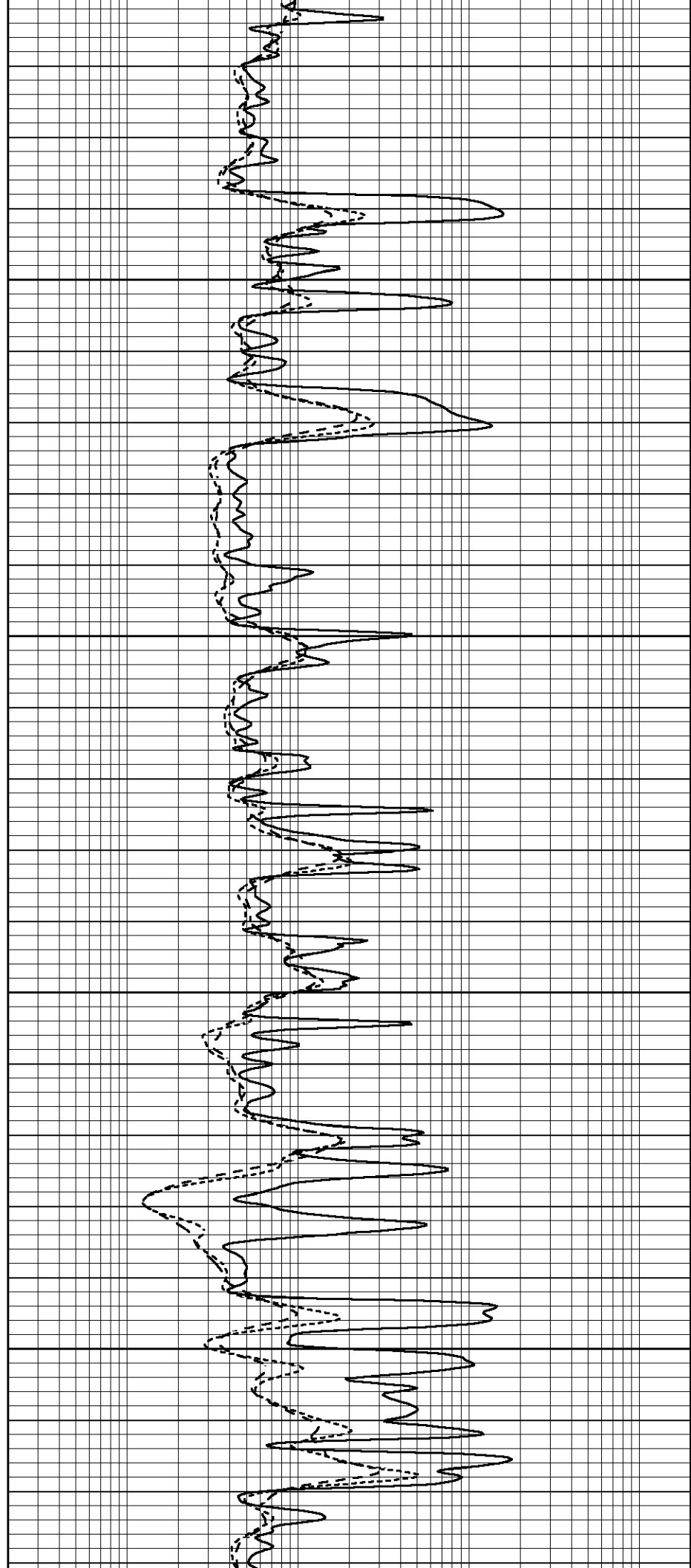


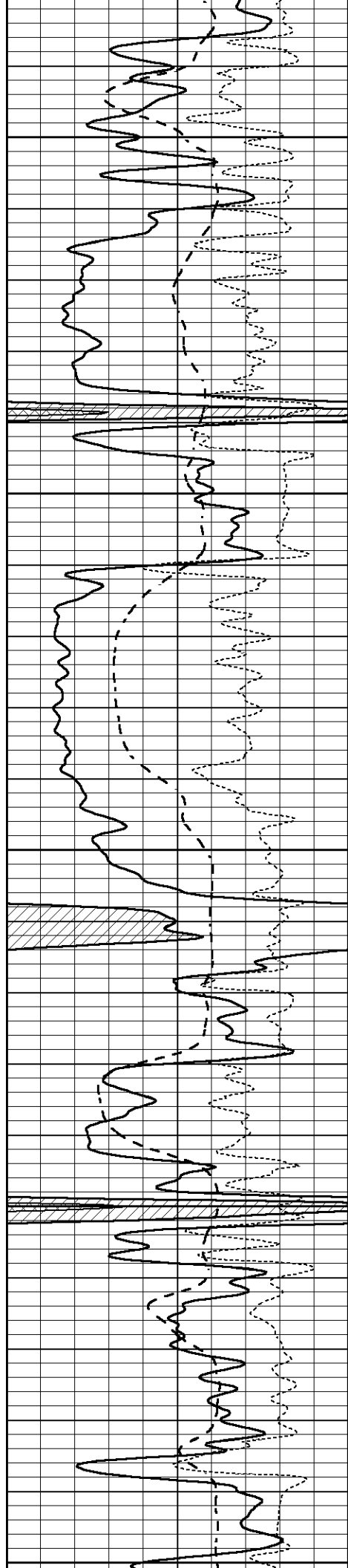
3900

3950

4000

4050





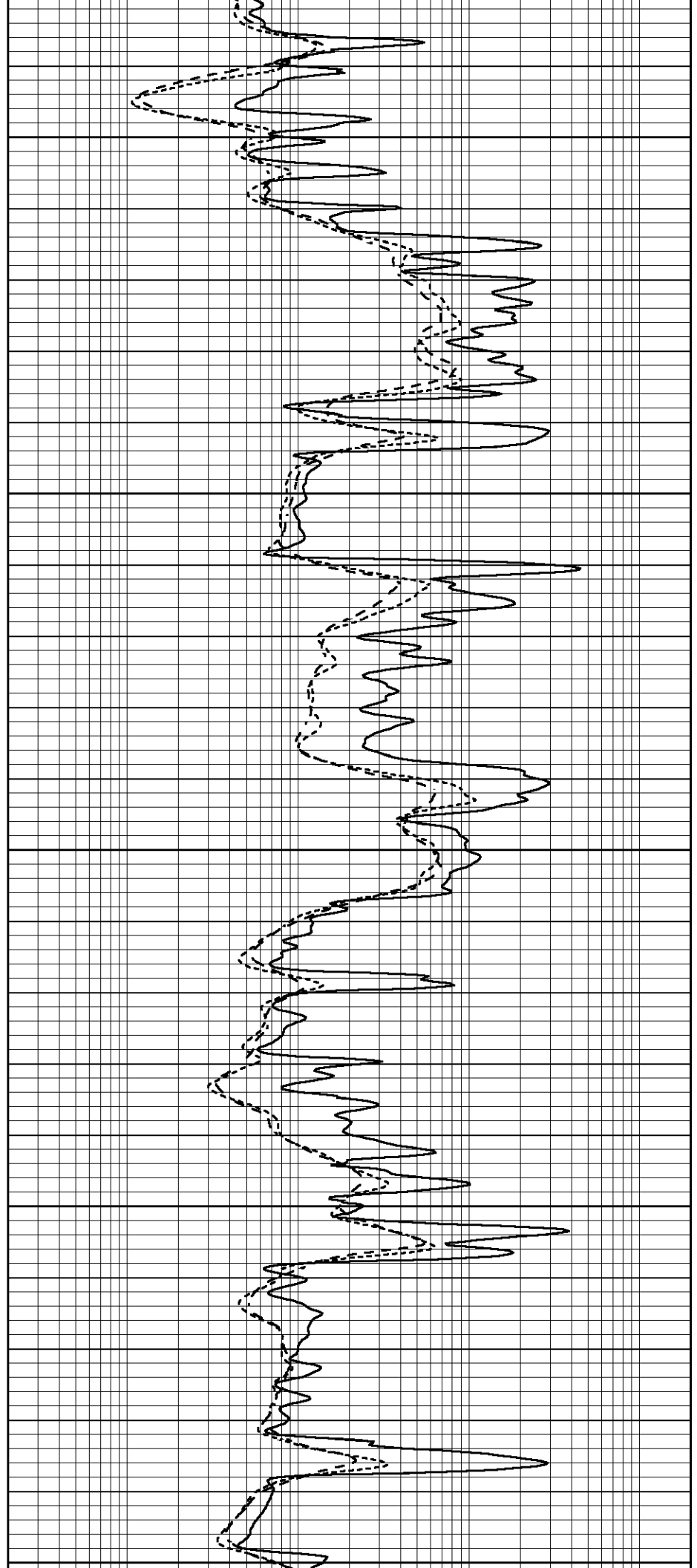
4100

4150

4200

4250

4300



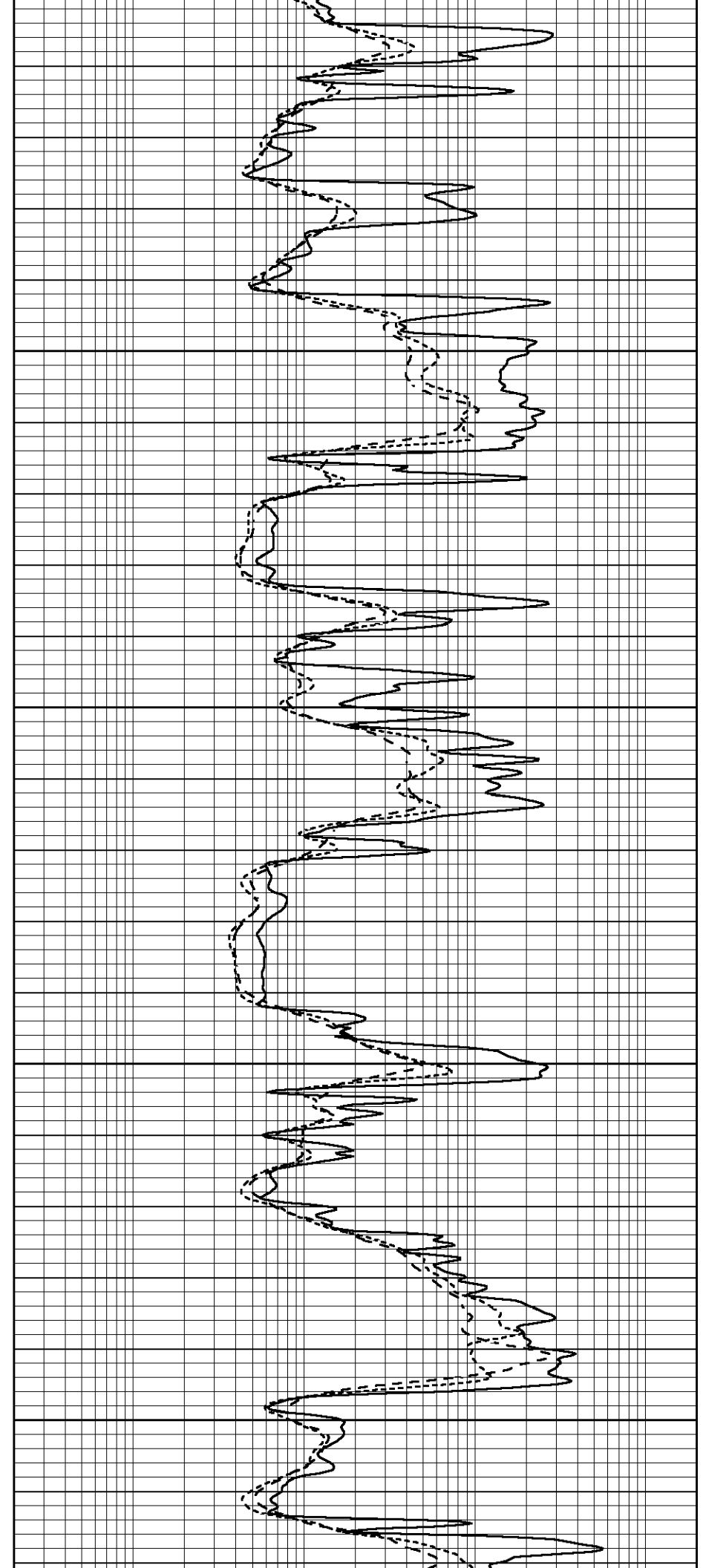
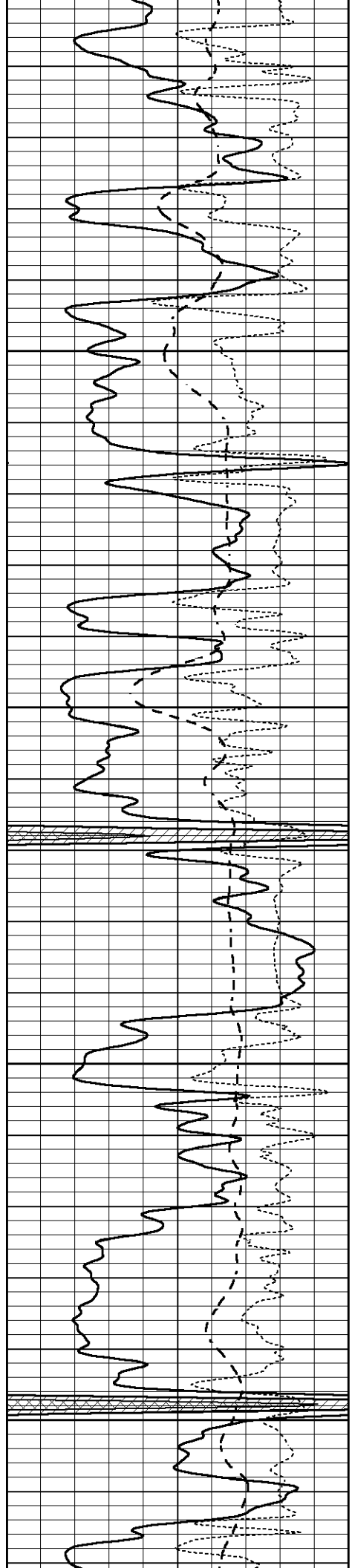
4300

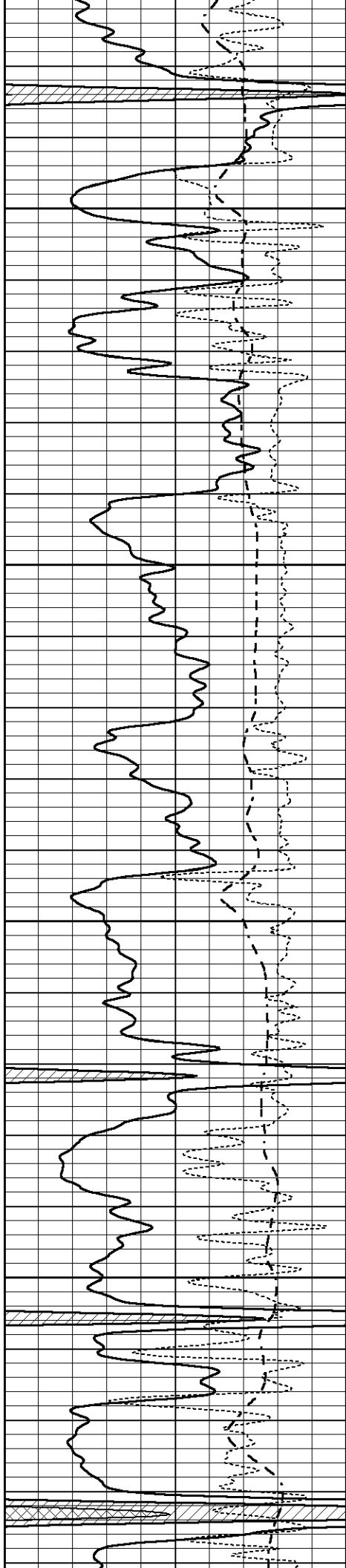
4350

4400

4450

4500



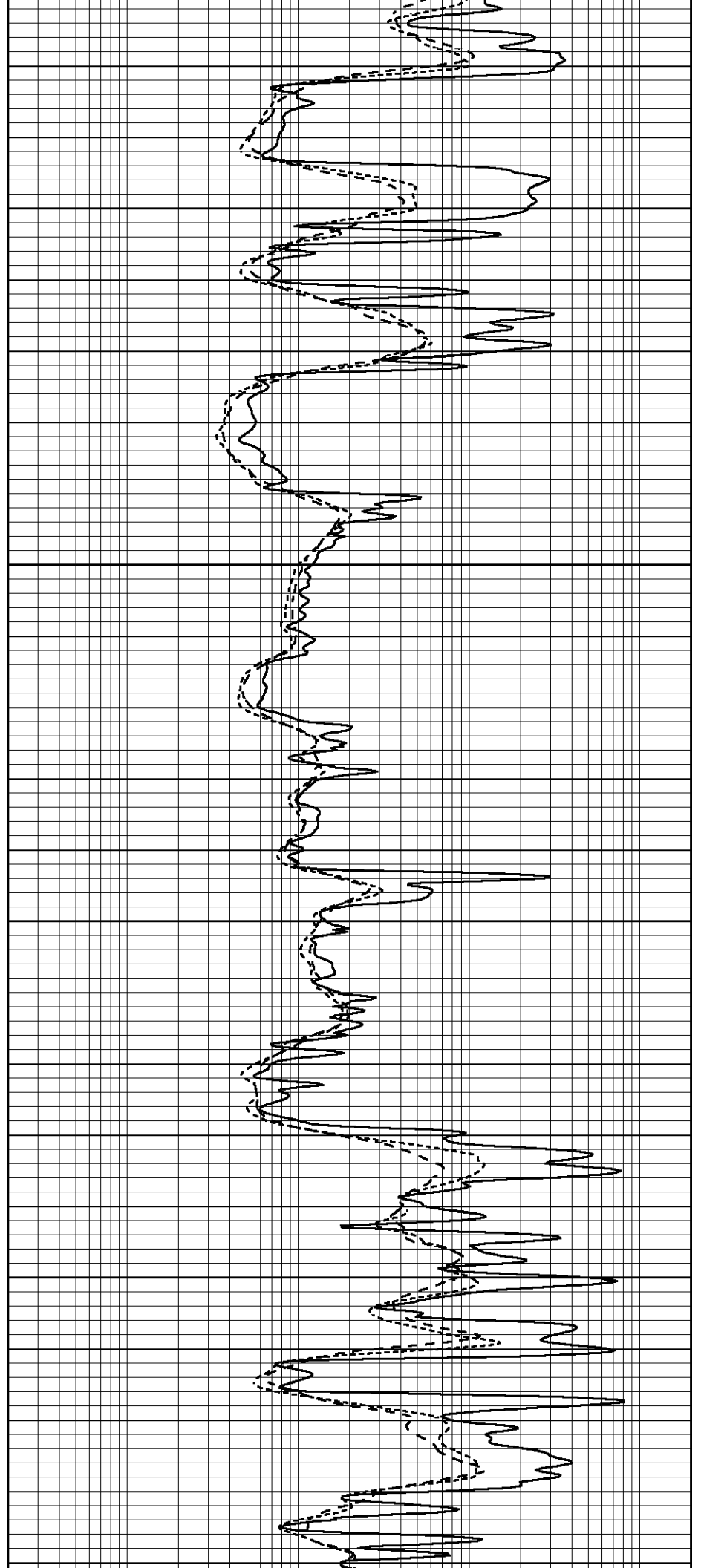


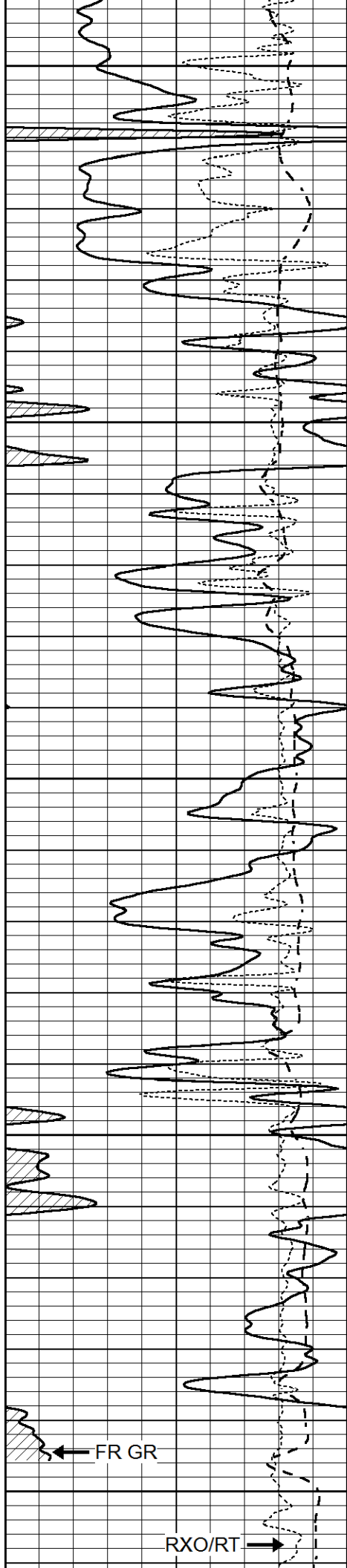
4550

4600

4650

4700





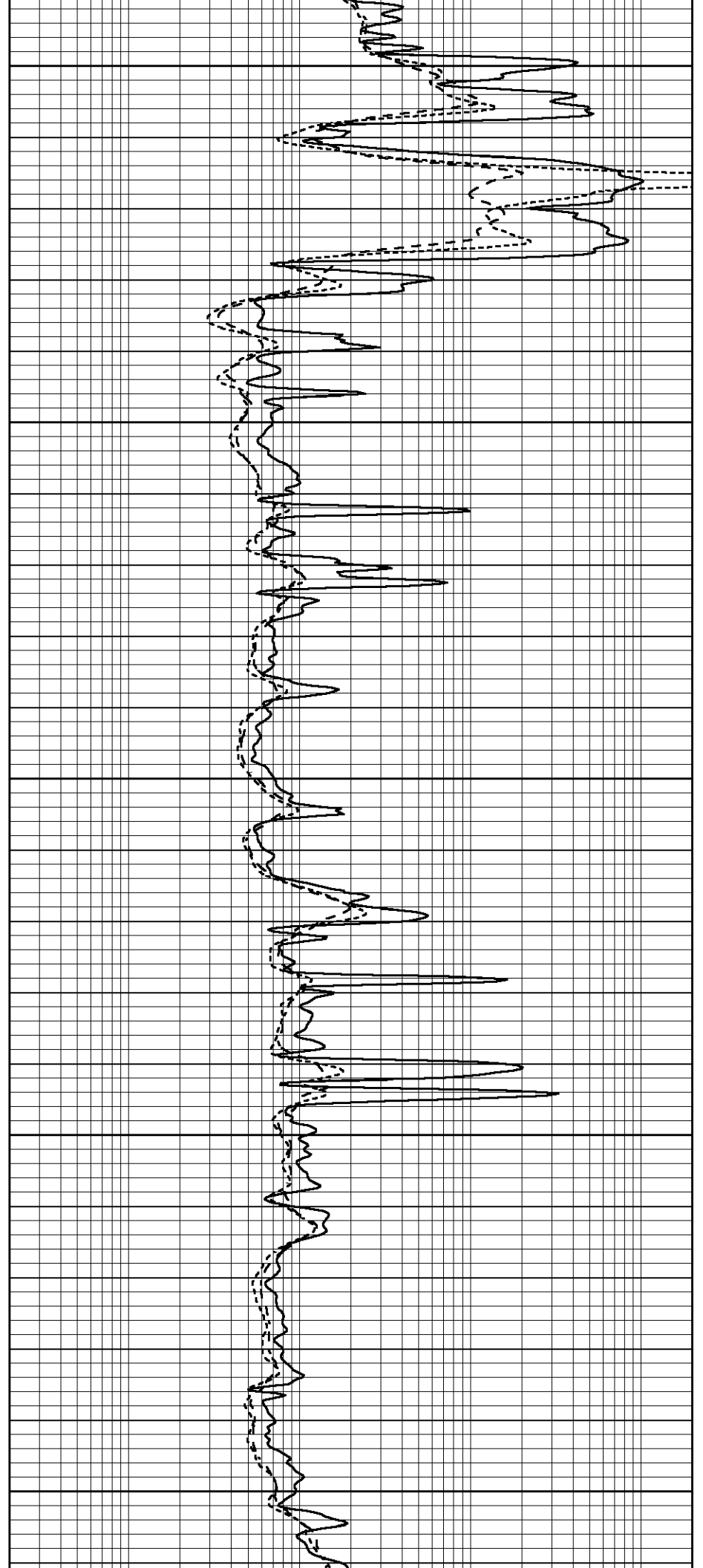
4750

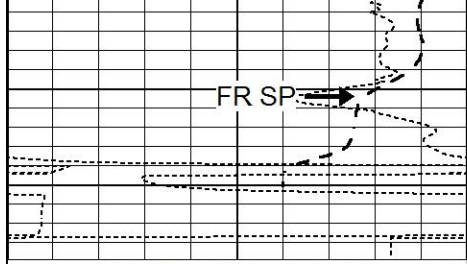
4800

4850

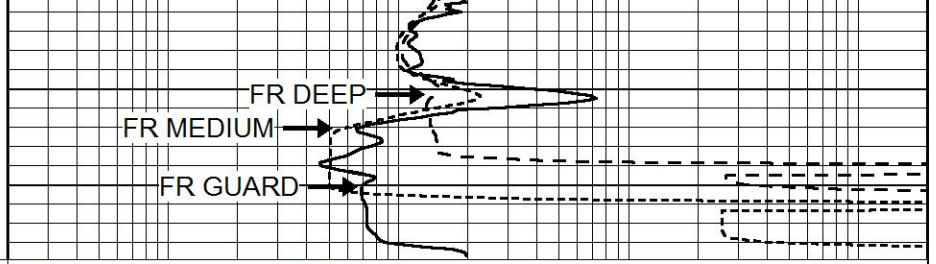
4900

4950





LTD 4982



0	GAMMA RAY (GAPI)	150
-100	SP (mV)	100
-250	Rxo/Rt	50

0.2	SHALLOW GUARD (Ohm-m)	2000
0.2	MEDIUM INDUCTION (Ohm-m)	2000
0.2	DEEP INDUCTION (Ohm-m)	2000

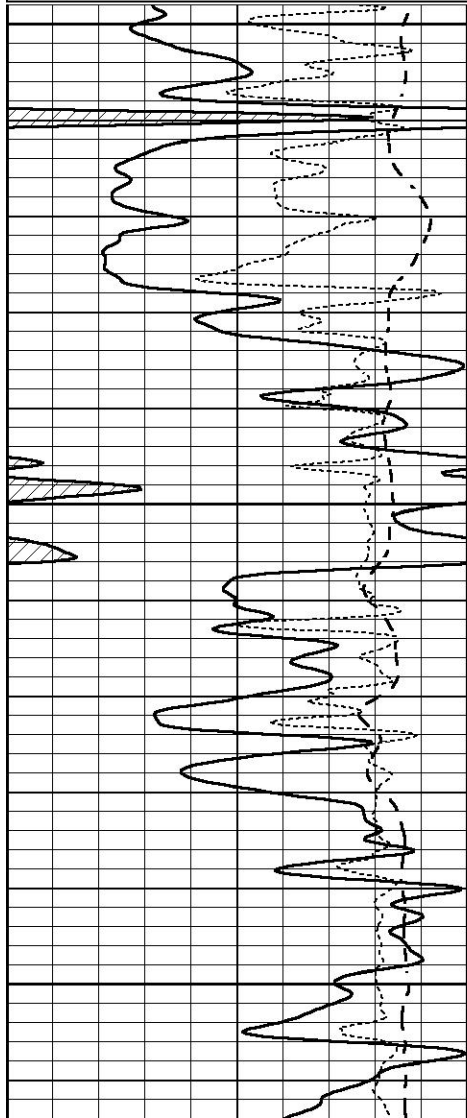


REPEAT SECTION

Database File 7590pe.db
 Dataset Pathname pass2R
 Presentation Format _dil
 Dataset Creation Fri Jun 02 16:26:43 2023
 Charted by Depth in Feet scaled 1:240

0	GAMMA RAY (GAPI)	150
-100	SP (mV)	100
-250	Rxo/Rt	50

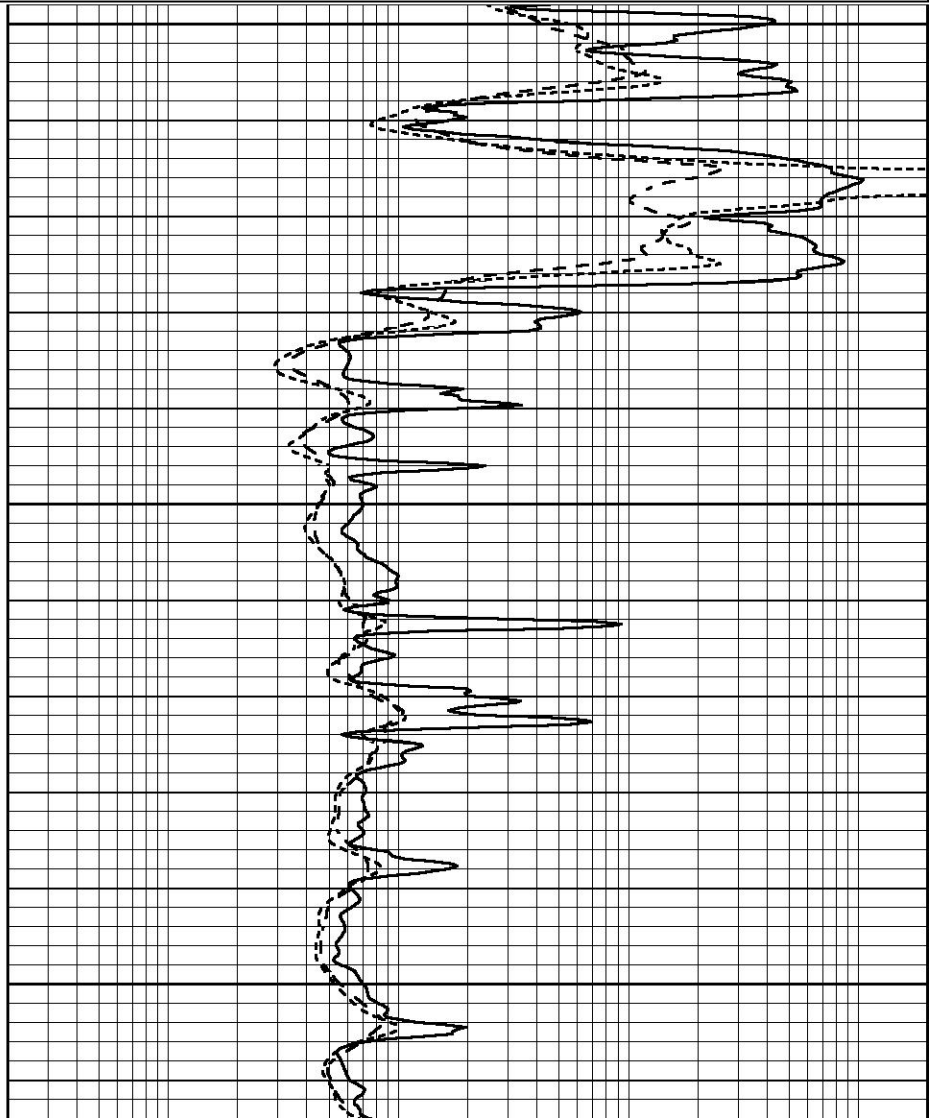
0.2	SHALLOW GUARD (Ohm-m)	2000
0.2	MEDIUM INDUCTION (Ohm-m)	2000
0.2	DEEP INDUCTION (Ohm-m)	2000

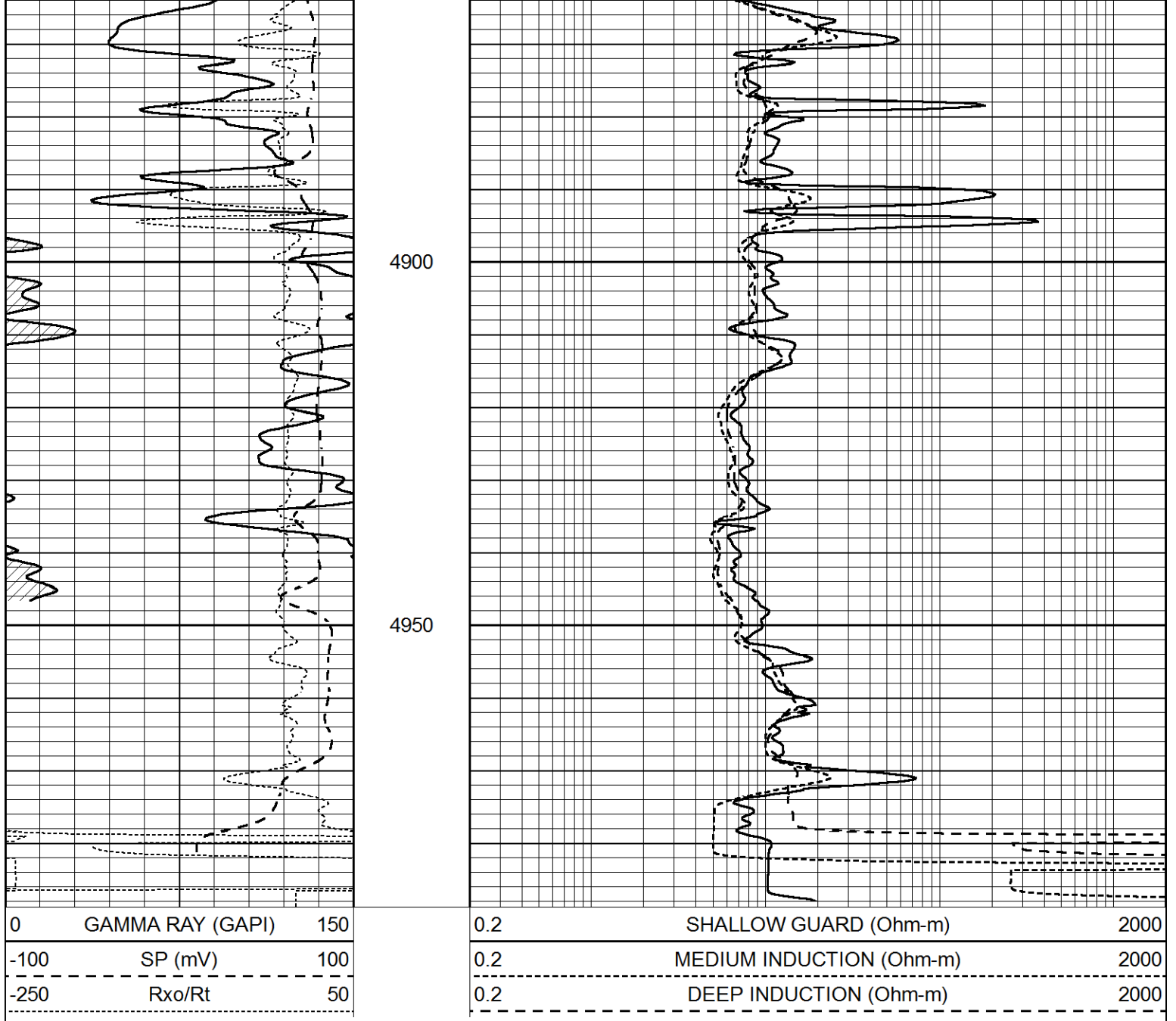


4750

4800

4850





Calibration Report

Database File 7590pe.db
 Dataset Pathname pass3M
 Dataset Creation Fri Jun 02 16:43:07 2023

Dual Induction Calibration Report

Serial-Model: FW1410-55-Probe
 Surface Cal Performed: Sun Apr 02 09:22:50 2023
 Downhole Cal Performed: Tue Feb 19 11:44:24 2019
 After Survey Verification Performed: Tue Feb 19 11:44:27 2019

Surface Calibration

Loop:	Readings			References			Results	
	Air	Loop	V	Air	Loop	mmho/m	m	b
Deep	0.011	0.656	V	1.000	400.000	mmho/m	550.000	-7.000
Medium	-0.000	0.731	V	1.000	464.000	mmho/m	550.000	-10.000
Internal:	Zero	Cal		Zero	Cal		m	b
Deep	0.007	0.649	V	0.000	400.000	mmho/m	623.784	4.505

Deep	0.007	0.649	V	0.000	464.000	mmho/m	627.284	-4.393
Medium	0.004	0.743	V	0.000	464.000	mmho/m	627.284	-2.251

Downhole Calibration								
	Readings			References			Results	
	Zero	Cal		Zero	Cal		m'	b'
Deep	-0.824	395.917	mmho/m	-0.976	397.550	mmho/m	1.004	-0.149
Medium	3.565	471.327	mmho/m	3.468	471.590	mmho/m	1.001	-0.099
LL3		7.503	V		1500.000	Ohm-m		
		0.001	V		20.000	Ohm-m		
		-7.481	V		3745.000	mmho-m		

After Survey Verification								
	Readings			Targets			Results	
	Zero	Cal		Zero	Cal		m'	b'
Deep	0.000	0.000	mmho/m	-0.824	395.917	mmho/m	1.000	0.000
Medium	0.000	0.000	mmho/m	3.565	471.327	mmho/m	1.000	0.000
LL3		0.000	Ohm-m		1500.000	Ohm-m		
		0.000	Ohm-m		20.000	Ohm-m		
		0.000	mmho-m		3745.000	mmho-m		

Litho Density Calibration Report
Serial: 003 Model: PRB

Master Calibration						Performed Mon May 22 11:42:40 AM '23		
	Background	Magnesium	Aluminum	Aluminum+Fe				
Window 1	1512.3	7465.7	2749.0	2519.6				cps
Window 2	1398.8	6705.7	2507.3	2313.8				cps
Window 3	1289.2	5259.5	2124.1	2009.6				cps
Window 4	351.1	351.6	351.8	353.2				cps
Long Space	0.0	5306.9	1108.5	915.0				cps
Short Space	3.3	2239.9	1441.2	1212.0				cps
Rho		1.7100	2.5900	0.0000				g/cc
Pe		2.0000	2.7500	5.7900				
Rib Angle	: 44.3	Rib Slope	: 0.975	Density/Spine Ratio			: 0.541	
Spine Angle	: 74.3	Spine Slope	: 3.551	Spine Intercept			: -18.8	

Before Survey Verification						Performed Wed Dec 31 18:00:00 1969		
	Background	Magnesium	Aluminum	Aluminum+Fe				
Window 1	0.0	0.0	0.0	0.0				cps
Window 2	0.0	0.0	0.0	0.0				cps
Window 3	0.0	0.0	0.0	0.0				cps
Window 4	0.0	0.0	0.0	0.0				cps
Long Space	0.0	0.0	0.0	0.0				cps
Short Space	0.0	0.0	0.0	0.0				cps
Measured Rho		0.0000	0.0000	0.0000				g/cc
Measured Correction		0.0000	0.0000	0.0000				g/cc
Measured Pe			0.0000	0.0000				

After Survey Verification						Performed Wed Dec 31 18:00:00 1969		
	Background	Magnesium	Aluminum	Aluminum+Fe				
Window 1	0.0	0.0	0.0	0.0				cps
Window 2	0.0	0.0	0.0	0.0				cps
Window 3	0.0	0.0	0.0	0.0				cps
Window 4	0.0	0.0	0.0	0.0				cps
Long Space	0.0	0.0	0.0	0.0				cps

Short Space	0.0	0.0	0.0	0.0	cps
Measured Rho		0.0000	0.0000	0.0000	g/cc
Measured Correction		0.0000	0.0000	0.0000	g/cc
Measured Pe			0.0000	0.0000	

Compensated Neutron Calibration Report

Serial Number: 080621PMC
Tool Model: NABORS

PRE-SURVEY VERIFICATION

Detector	Readings	Measured	Target
Short Space	cps		
Long Space	cps	pu	pu

POST-SURVEY VERIFICATION

Detector	Readings	Measured	Target
Short Space	cps		
Long Space	cps	pu	pu

Gamma Ray Calibration Report

Serial Number: 46001
Tool Model: Probe1
Performed: Thu Apr 20 09:55:57 2023

Calibrator Value: 1.0 GAPI

Background Reading: 0.0 cps
Calibrator Reading: 1.0 cps

Sensitivity: 0.4300 GAPI/cps