



MICRO LOG

Company PATERSON ENERGY
 Well MUCHMORE-THORNBURG #1
 Field CHAPMAN
 County GOVE State KANSAS

Location: 2310' FNL & 1650' FEL
 API #: 15 063 22430
 Other Services: POR, DIL
 Permanent Datum: SEC 34 TWP 15S RGE 19W
 Log Measured From: Ground Level Elevation 2591
 Drilling Measured From: KB 8' AGL
 KB
 Elevation: K.B. 2599, D.F. 2597, G.L. 2591

Date	6/17/23
Run Number	TWO
Depth Driller	4590
Depth Logger	4594
Bottom Logged Interval	4592
Top Log Interval	3600
Casing Driller	8 5/8"@223'
Casing Logger	223'
Bit Size	7 7/8"
Type Fluid in Hole	Chemical
Density / Viscosity	9.3/51
pH / Fluid Loss	9.5/8.0
Source of Sample	Pit
Rm @ Meas. Temp	1.7@70degf
Rmf @ Meas. Temp	1.3@70degf
Rmc @ Meas. Temp	2.0@70degf
Source of Rmf / Rmc	Calculated
Rm @ BHT	1.0@115degf
Time Circulation Stopped	2:00 AM
Time Logger on Bottom	6:30 AM
Maximum Recorded Temperature	115degf
Equipment Number	T-605
Location	Hays, KS.
Recorded By	COLBY DREILING
Witnessed By	JASON T. ALM

<<< Fold Here >>>

All interpretations are opinions based on inferences from electrical or other measurements and we cannot and do not guarantee the accuracy or correctness of any interpretation, and we shall not, except in the case of gross or willful negligence on our part, be liable or responsible for any loss, costs, damages, or expenses incurred or sustained by anyone resulting from any interpretation made by any of our officers, agents or employees. These interpretations are also subject to our general terms and conditions set out in our current Price Schedule.

Comments

1/2 EAST OF UTICA, 4 NORTH, 2 WEST,
 7/8 MILE NORTH, WEST INTO.

Thanks for using Gemini Wireline LLC
 785-625-1182

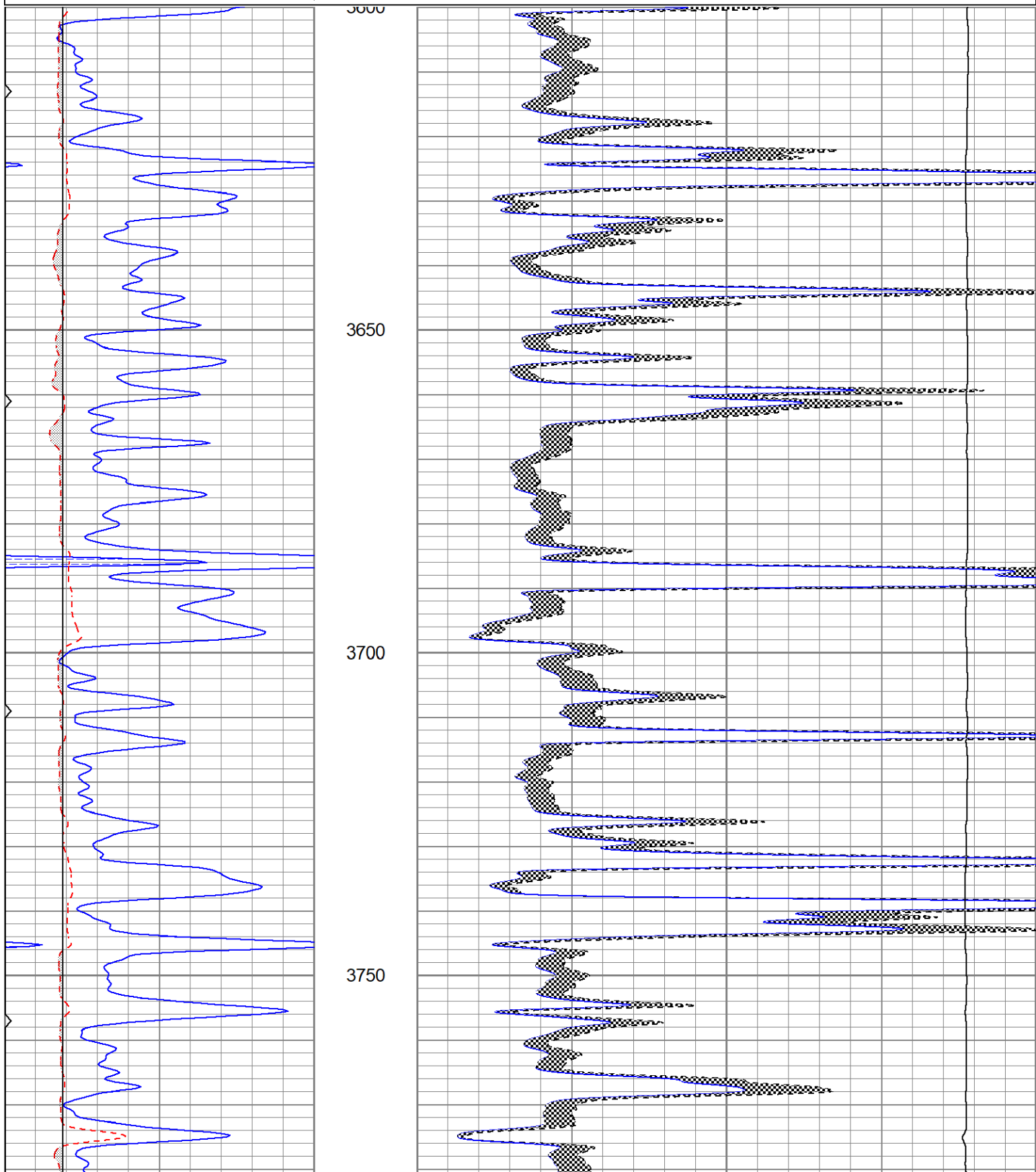


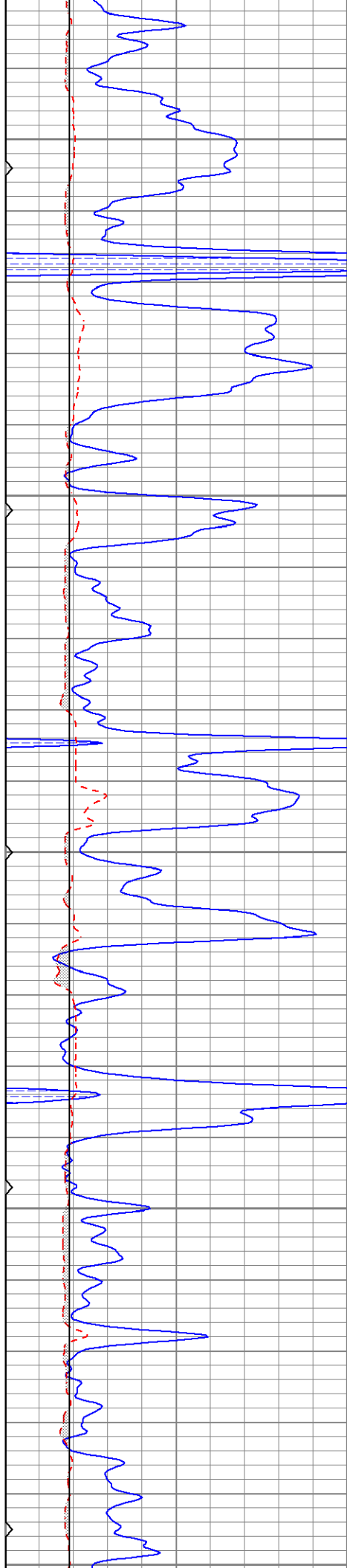
MAIN PASS

Database File pemuchmorethornburg#1oh.db
 Dataset Pathname pass6
 Presentation Format kml
 Dataset Creation Sat Jun 17 08:35:19 2023
 Charted by Depth in Feet scaled 1:240

0	GR (GAPI)	150
6	MCAL (in)	16
6	BOREID (in)	16
0	MINMK	50

0	MN 2" (Ohm-m)	20
0	MI 1" (Ohm-m)	20
10000	LTEN (lb)	0





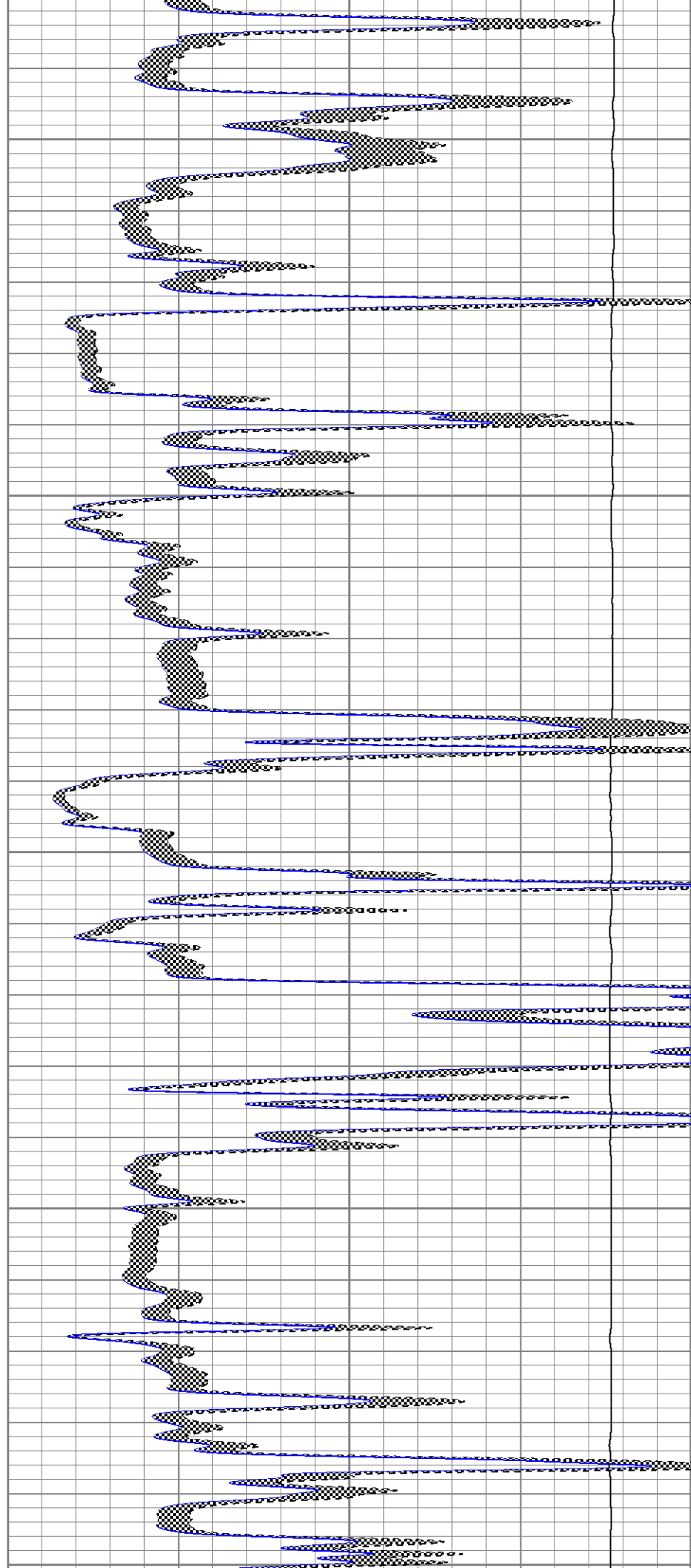
3800

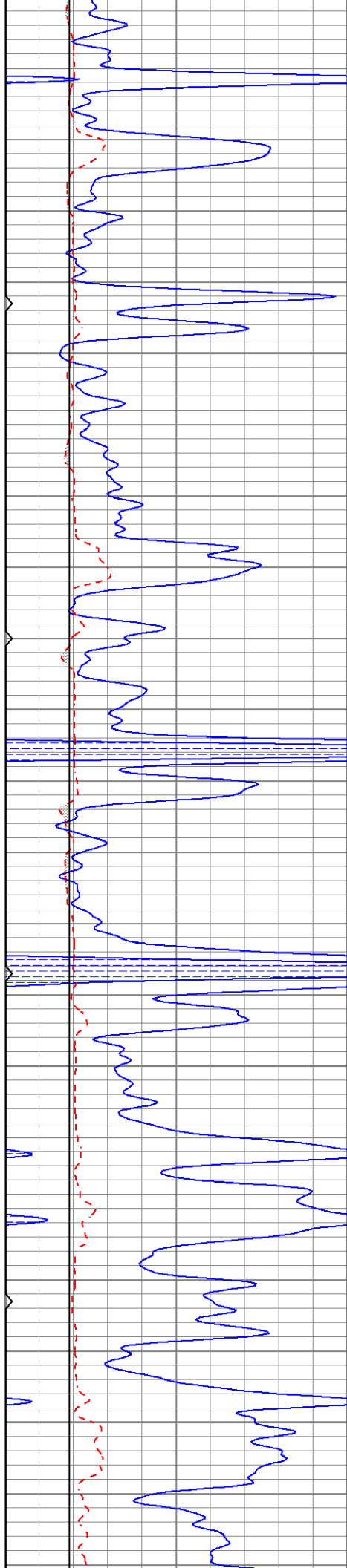
3850

3900

3950

4000



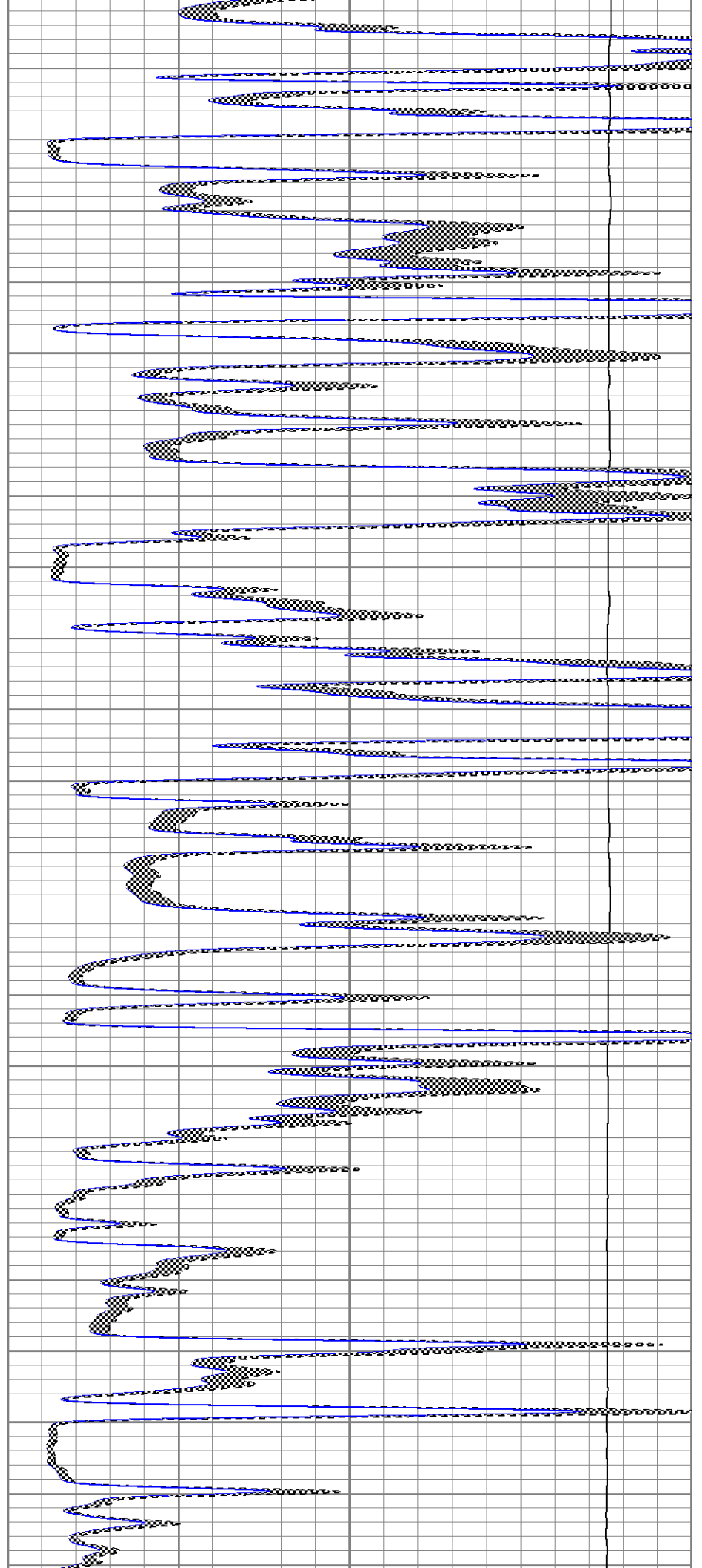


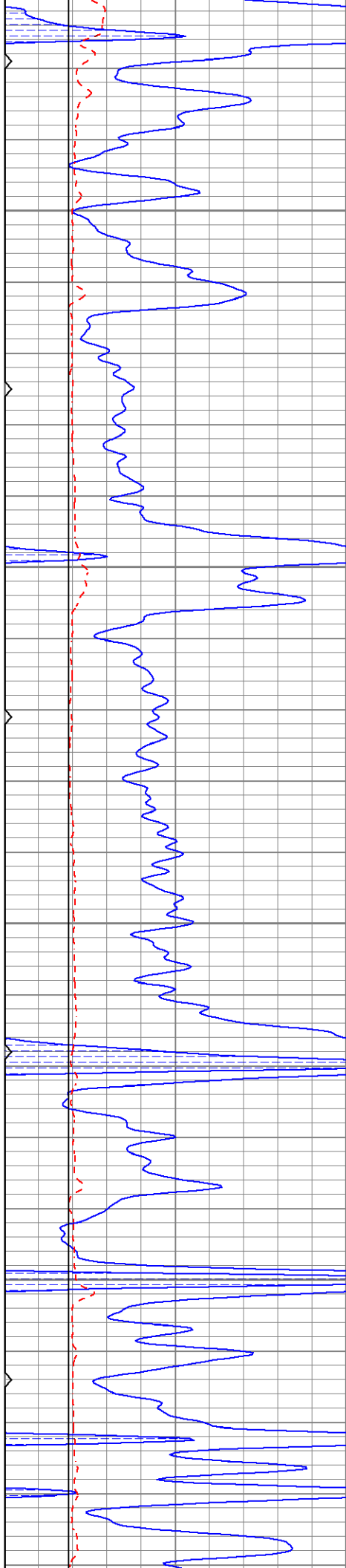
4050

4100

4150

4200



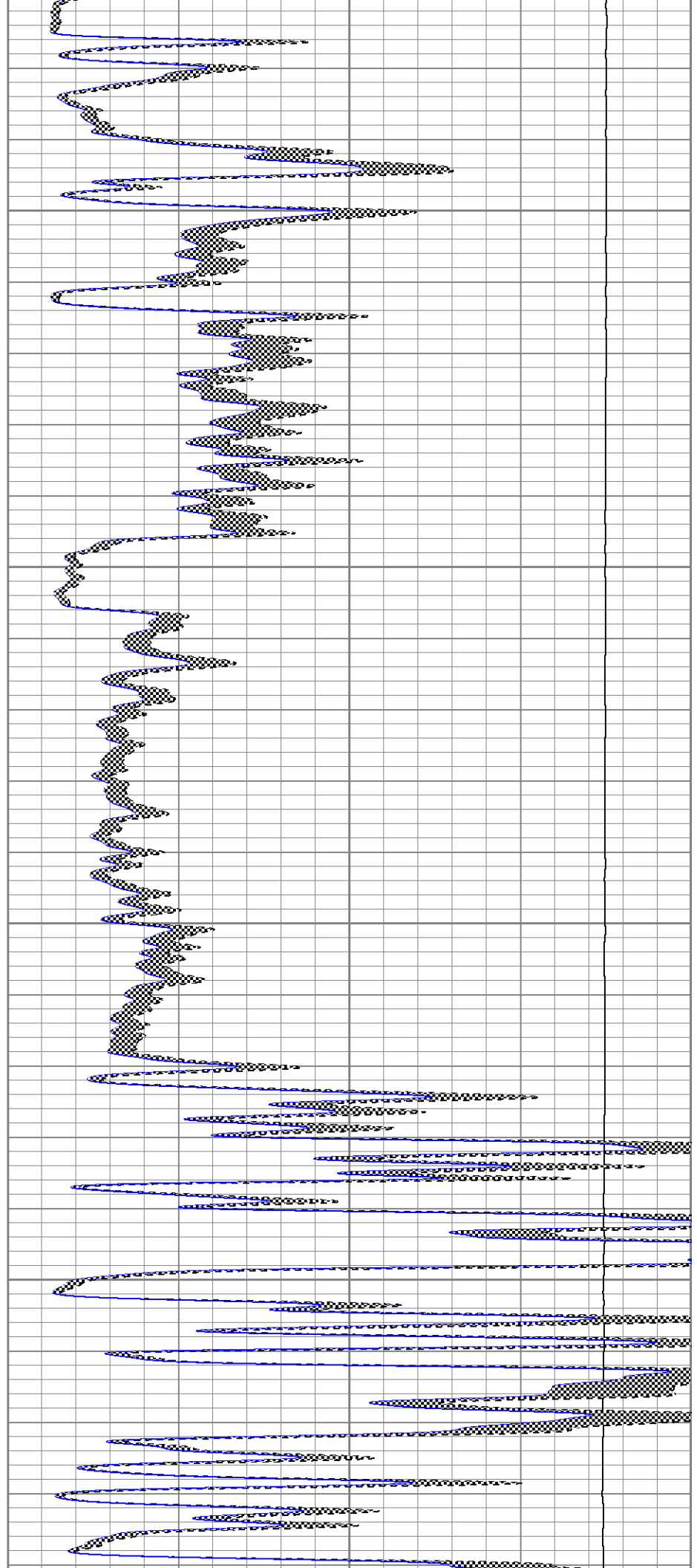


4250

4300

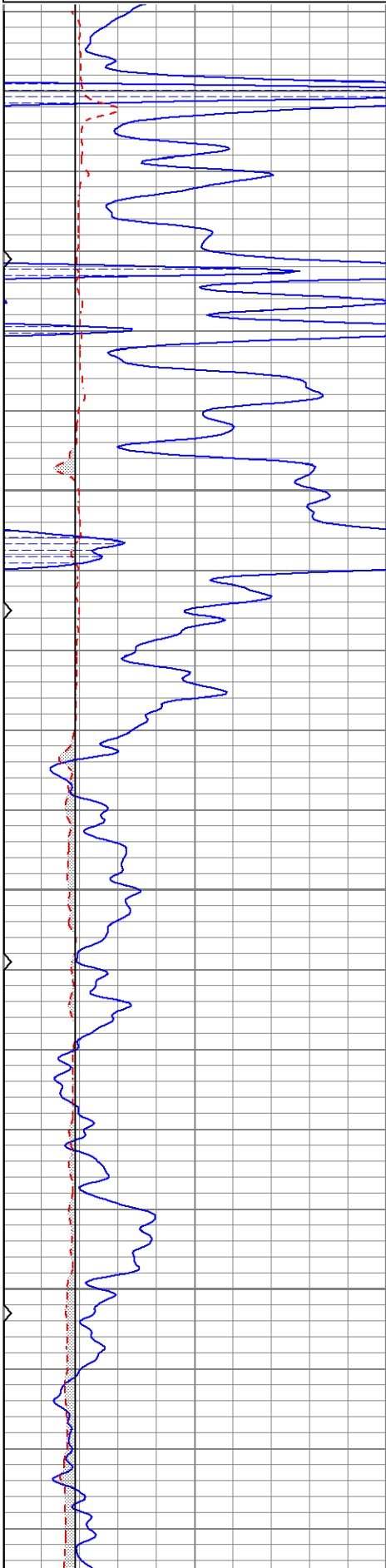
4350

4400

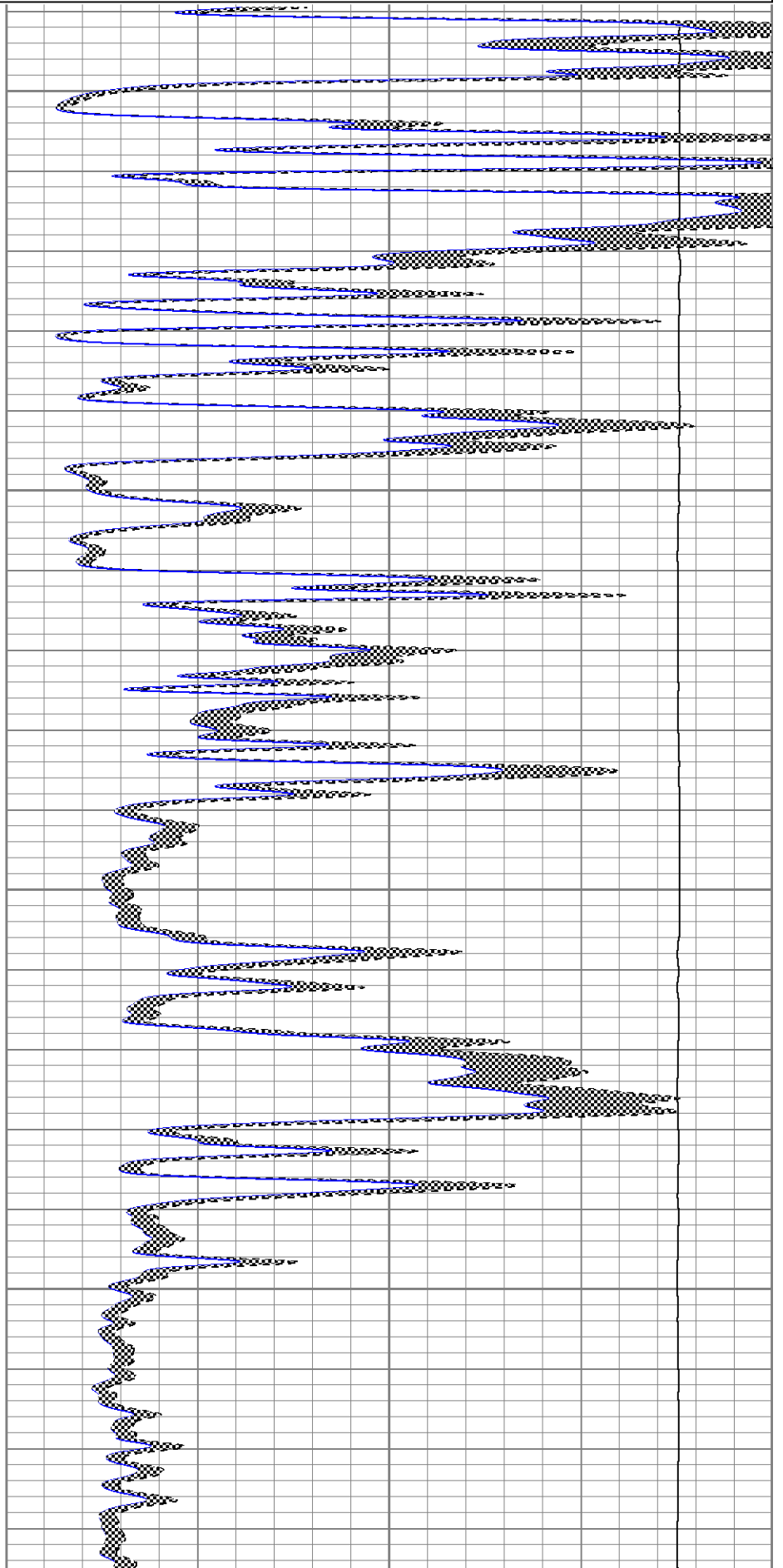


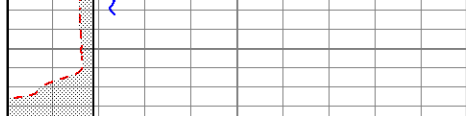
0	GR (GAPI)	150
6	MCAL (in)	16
6	BOREID (in)	16
0	MINMK	50

0	MN 2" (Ohm-m)	20
0	MI 1" (Ohm-m)	20
10000	LTEN (lb)	0

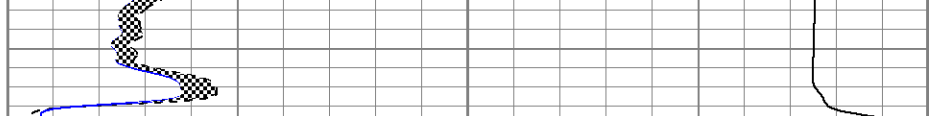


4400
4450
4500
4550





0	GR (GAPI)	150
6	MCAL (in)	16
6	BOREID (in)	16
0	MINMK	50



0	MN 2" (Ohm-m)	20
0	MI 1" (Ohm-m)	20
10000	LTEN (lb)	0

Calibration Report

Database File pemuchmorethornburg#1oh.db
 Dataset Pathname pass5.1
 Dataset Creation Sat Jun 17 08:54:58 2023

Microlog Calibration Report

Serial-Model: 1600-Pengo
 Performed: Sat Jun 17 08:25:47 2023

	Readings			References			Results	
	Zero	Cal		Zero	Cal		m	b
Normal	-0.0259	0.4809	V	0.0000	10.0000	Ohm-m	19.7333	0.5108
Inverse	-0.0503	0.6594	V	0.0000	10.0000	Ohm-m	12.5913	0.7086
Caliper	3.2319	6.4483	V	8.0000	15.0000	in	2.1364	0.8662

Gamma Ray Calibration Report

Serial Number: 2001
 Tool Model: OH
 Performed: Mon Mar 13 07:38:49 2023

Calibrator Value: 1.0 GAPI

Background Reading: 0.0 cps
 Calibrator Reading: 1.0 cps

Sensitivity: 0.8000 GAPI/cps