



**Sonic Cement
Bond Log**

API No.

15-171-21141

Company **Stelbar Oil Corporation, Inc.**

Well **Dairy #2-18**

Field **Wilkens Dairy**

County **Scott** State **Kansas**

Location **1592' FNL & 513' FWL**

Sec: **18** Twp: **17S** Rge: **32W**

Other Services
Perforate

Permanent Datum **Ground Level** Elevation **2984**
 Log Measured From **Kelly Bushing** 13 Ft. Above Perm. Datum
 Drilling Measured From **Kelly Bushing**

Elevation
K.B. 2997
D.F. 2995
G.L. 2984

Run Number	One	
Date Survey	10/23/2023	
Date Cementing	8/29/2015	
Type Cementing Operation	Primary	
Depth Driller	4840	
Depth Logger	2050	
Logged Interval	2050 to 1500	
Casing Driller	5.5 @ TD	
Float Collar -- D.V. Tool	////	////
Squeeze Depth	////	
Amount & Type Cement	////	
Amount & Type Admix	////	
Type Fluid In Hole	Water	
Fluid Level	Full	
Salinity PPM CL	////	
Weight lb/gal -- Vis.	////	////
Approx. Logged Cement Top		
Calculated Cement Top		
Max. Hole Temperature	////	
Tool No.	DIG03	
Spacing Recorded	3-5	
Equipment -- Location	16 Pratt, KS	
Recorded By	N. Schneider	
Witnessed By	Tyson Dilka	

<<< Fold Here >>>

All interpretations are opinions based on inferences from electrical or other measurements and we cannot and do not guarantee the accuracy or correctness of any interpretation, and we shall not, except in the case of gross or willful negligence on our part, be liable or responsible for any loss, costs, damages, or expenses incurred or sustained by anyone resulting from any interpretation made by any of our officers, agents or employees. These interpretations are also subject to our general terms and conditions set out in our current Price Schedule.

Comments

Thank you for using Excel Wireline (620) 388-5676

Scott City
7 N to N end of Dairy Farm
100' E
S & E to Location

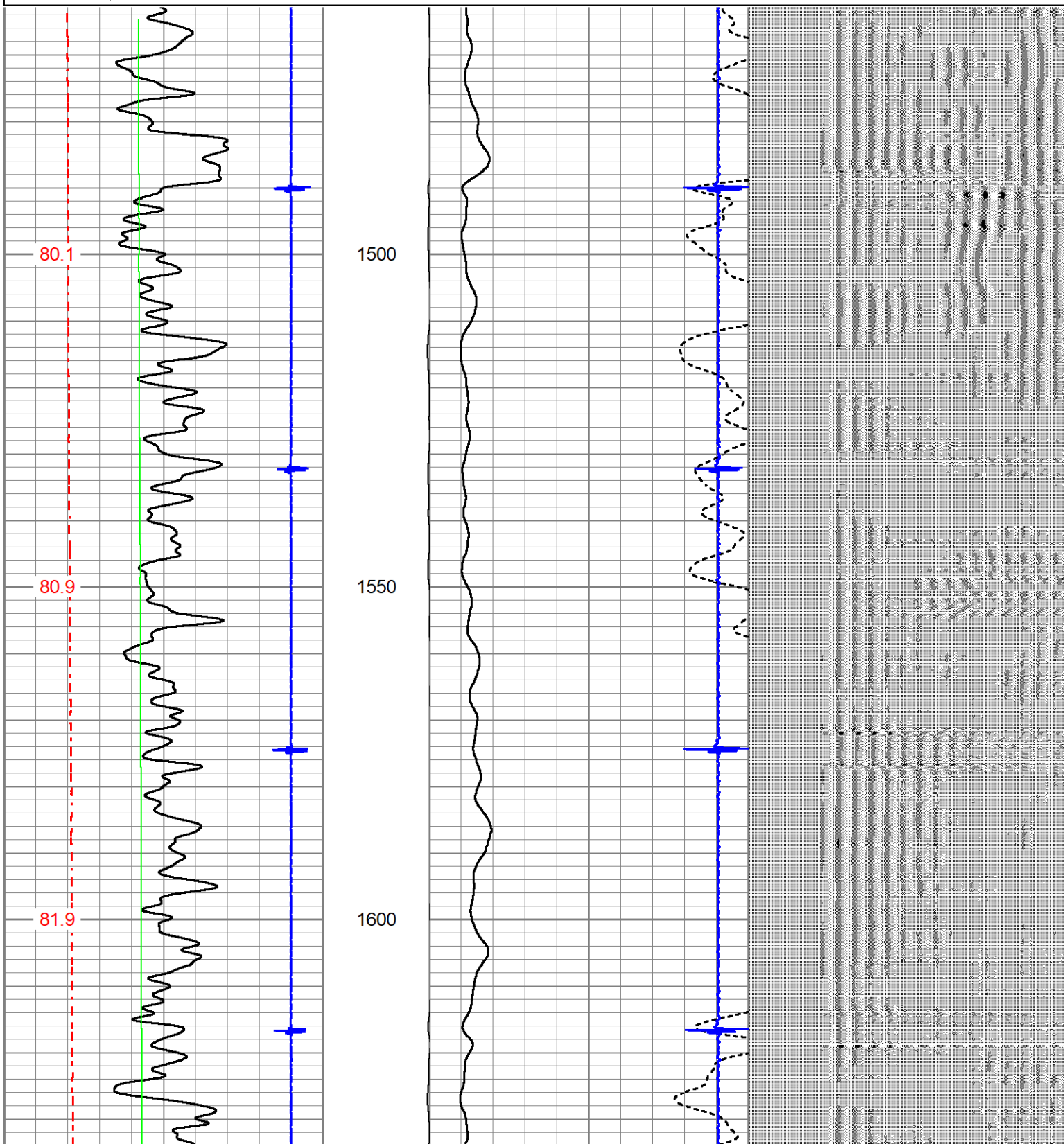


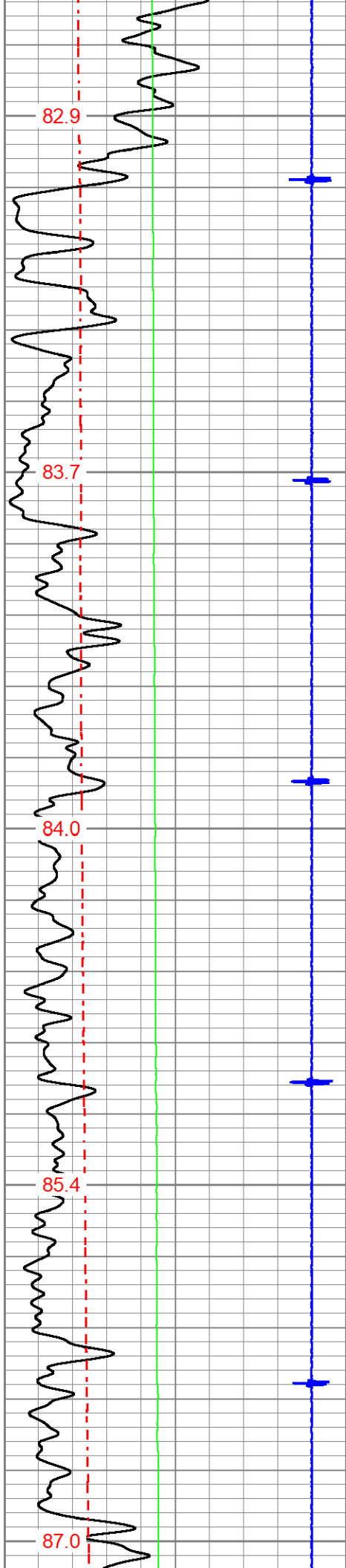
Main Pass

Database File stelbar_dairy_2_18.db
 Dataset Pathname grcbl/pass2
 Presentation Format prb_cbt
 Dataset Creation Mon Oct 23 11:52:19 2023
 Charted by Depth in Feet scaled 1:240

9	CCL\$2	-1	AMP3FT	AMP AMPLITUDE (mV)		200	VDL (usec)	1200
0	Gamma Ray (GAPI)	150	(mV)	AMPLITUDE (mV)				
50	GCT_Temp (degF)	200	-100 10	6	CCL1	-0.6		
0	LTEN (lb)	2000						

GCT_Temp
(degF)





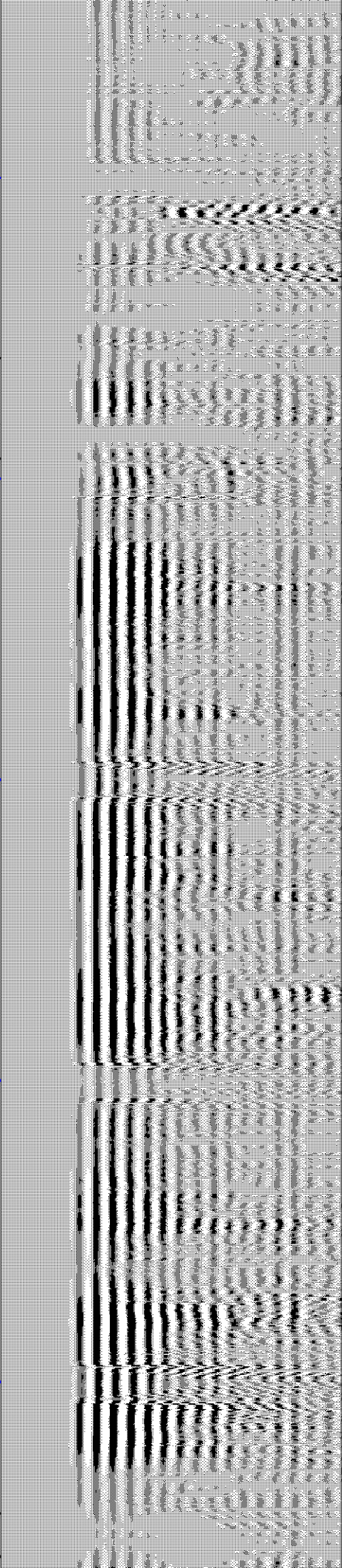
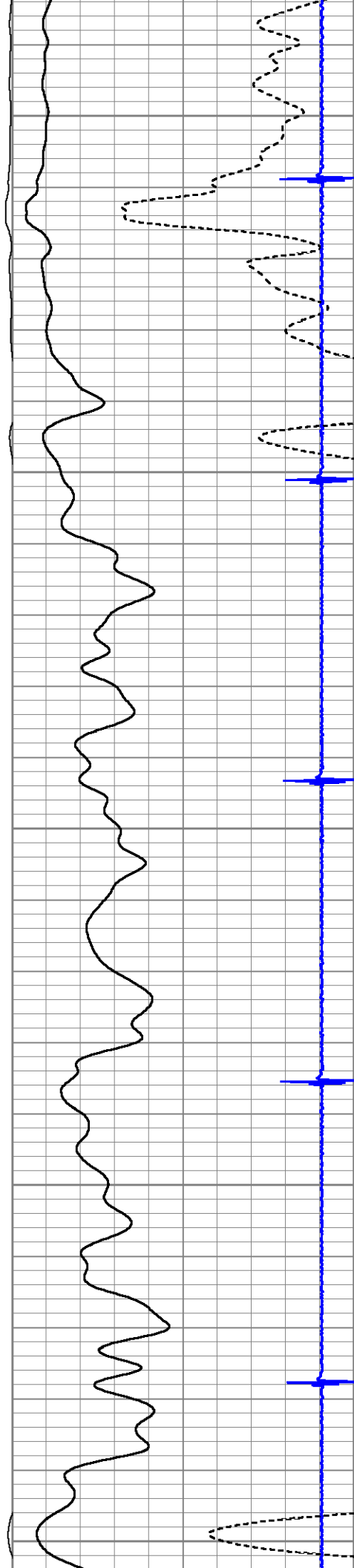
1650

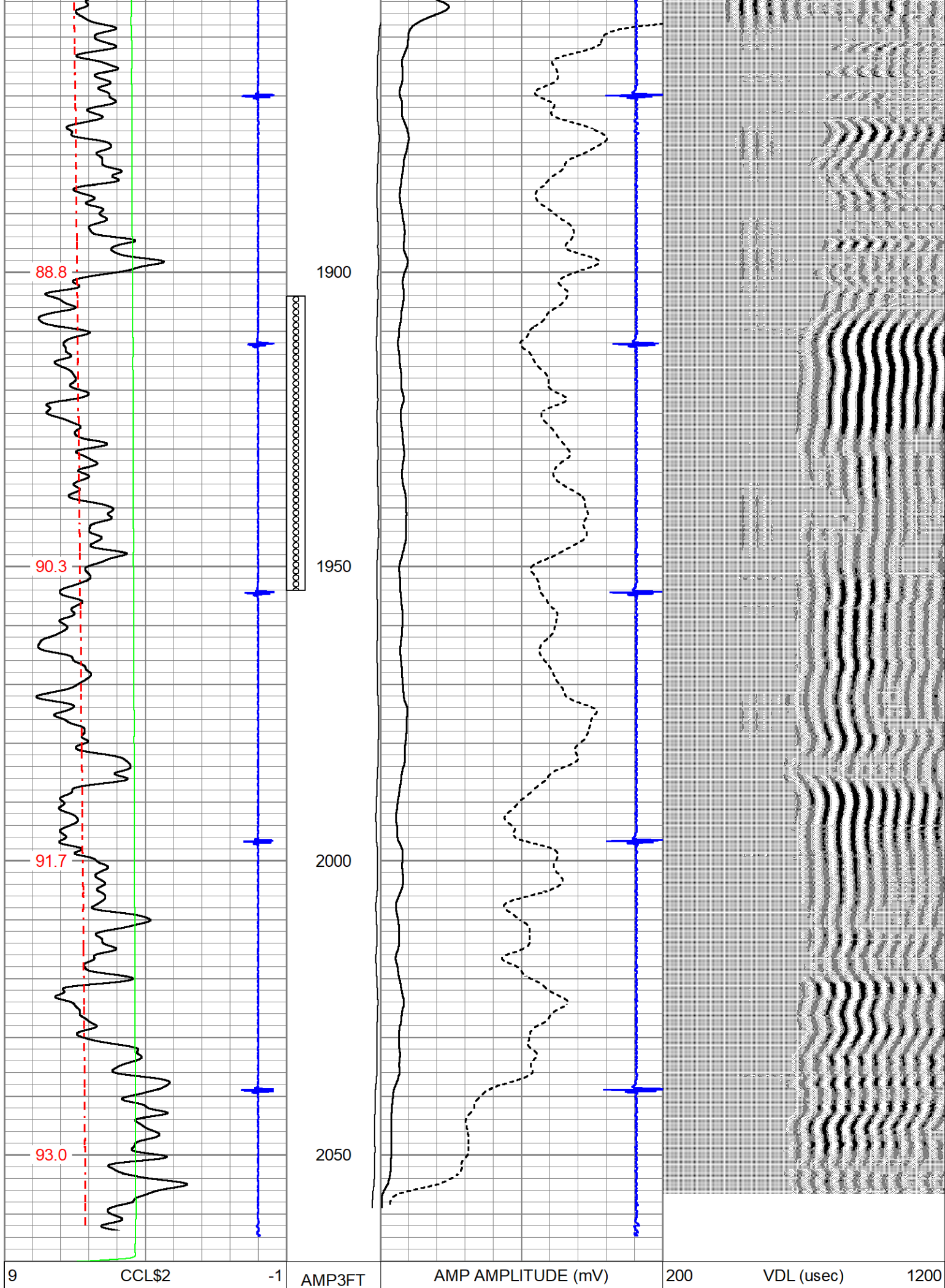
1700

1750

1800

1850





0	Gamma Ray (GAPI)	150	(mV)		AMPLITUDE (mV)	
50	GCT_Temp (degF)	200	-100	10	6	CCL1
0	LTEN (lb)	2000				-0.6
GCT_Temp						
(degF)						