



MIDWEST WIRELINE

BOREHOLE VOLUME

Company Satchell Creek Petroleum LLC
 Well Worcester A #4-22
 Field Alda South
 County Graham State Kansas

Company Satchell Creek Petroleum LLC
 Well Worcester A #4-22
 Field Alda South
 County Graham
 State Kansas

Location: API #: 15-065-24257-00-00
 NE SW NW SW
 1734 FSL & 567 FWL
 SEC 22 TWP 7S RGE 22W
 Permanent Datum Ground Level Elevation 2264
 Log Measured From Kelly Bushing
 Drilling Measured From Kelly Bushing
 Other Services
 CNL/CDD/DIL
 MEL/BHCS
 K.B. 2271
 D.F.
 G.L. 2264

Date	7/15/2023						
Run Number	One						
Type Log	BHV						
Depth Driller	3913						
Depth Logger	3907						
Bottom Logged Interval	3886						
Top Logged Interval	200						
Type Fluid In Hole	Chemical						
Salinity, PPM CL	1000						
Density	9.4						
Level	Full						
Max. Rec. Temp. F	115						
Operating Rig Time	3.5 Hours						
Equipment -- Location	P-24 Hays						
Recorded By	T. Martin						
Witnessed By	Sean Deenihan						
Borehole Record							
Run No.	Bit	From	To	Size	Wgt.	From	To
One	12.25	00	220	8.625	23	00	220
Two	7.875	220	TD				
Casing Record							

<<< Fold Here >>>

All interpretations are opinions based on inferences from electrical or other measurements and Midwest Wireline LLC cannot and does not guarantee the accuracy or correctness of any interpretation, and Midwest Wireline LLC will not be liable or responsible for any loss, costs, damages, or expenses incurred or sustained by anyone resulting from any interpretation made by any of our officers, agents or employees.

Comments

N/A DENOTES NOT AVAILABLE OR NON-APPLICABLE.

Hill City, KS, 3 E to Rd 310,
 2.5 N to TB, E & N into

Log Measured From: Kelly Bushing 5 Ft. Above Permanent Datum

THANK YOU FOR USING MIDWEST WIRELINE LLC
 785-625-3858

Your Midwest Wireline Crew

Engineer: T. Martin
 Operator:
 Operator:
 Operator:

This Log Record Was Witnessed By

Primary Witness: Sean Deenihan
 Secondary Witness:
 Secondary Witness:
 Secondary Witness:

Sensor	Offset (ft)	Schematic	Description	Length (ft)	O.D. (in)	Weight (lb)
GR	32.75		GR-M&W (105)	3.00	3.50	50.00
CNLSC CNSSC	29.65 28.90		CNT-M&W (201-M&W)	5.00	3.50	100.00
LSD DCAL SSD	20.60 20.58 20.10		CDL-M&W (307-11)	8.50	4.00	250.00
RLL3F RLL3	15.50 15.50		DIL-M&W (507)	18.25	3.50	220.00
CILD	8.33					
CILM	4.50					
SP	0.20					

Dataset: satchell_worcester a #4-22.db: field/well/Stack/pass3.1
 Total length: 34.75 ft
 Total weight: 620.00 lb
 O.D.: 4.00 in

Log Variables

DatabaseC:\ProgramData\Warrior\Data\satchell_worcester a #4-22.db
 Dataset field/well/Stack/pass3.1/_vars_

Top - Bottom

BOREID in 7.875	BOTTEMP degF 115	CASEOD in 5.5	CASETHCK in 0	FLUIDDEN g/cc 1	MATRXDEN g/cc 2.71	NPORSEL Limestone	PERFS No
SNDERR mmho/m -2	SNDERRM mmho/m 0	SPSHIFT mV 380	SRFTEMP degF 85	SZCOR Off	TDEPTH ft 3907		

Variable Description

BOREID : Borehole I.D.
 BOTTEMP : Bottom Hole Temperature
 CASEOD : Casing O.D.
 CASETHCK : Casing Thickness
 FLUIDDEN : Fluid Density
 MATRXDEN : Matrix Density
 NPORSEL : Neutron Porosity Curve Select

PERFS : Perforation Flag
 SNDERR : Deep Sonde Error Correction
 SNDERRM : Medium Sonde Error Correction
 SPSHIFT : S.P. Baseline Offset
 SRFTEMP : Surface Temperature
 SZCOR : CN Size Cor. ?
 TDEPTH : Total Depth

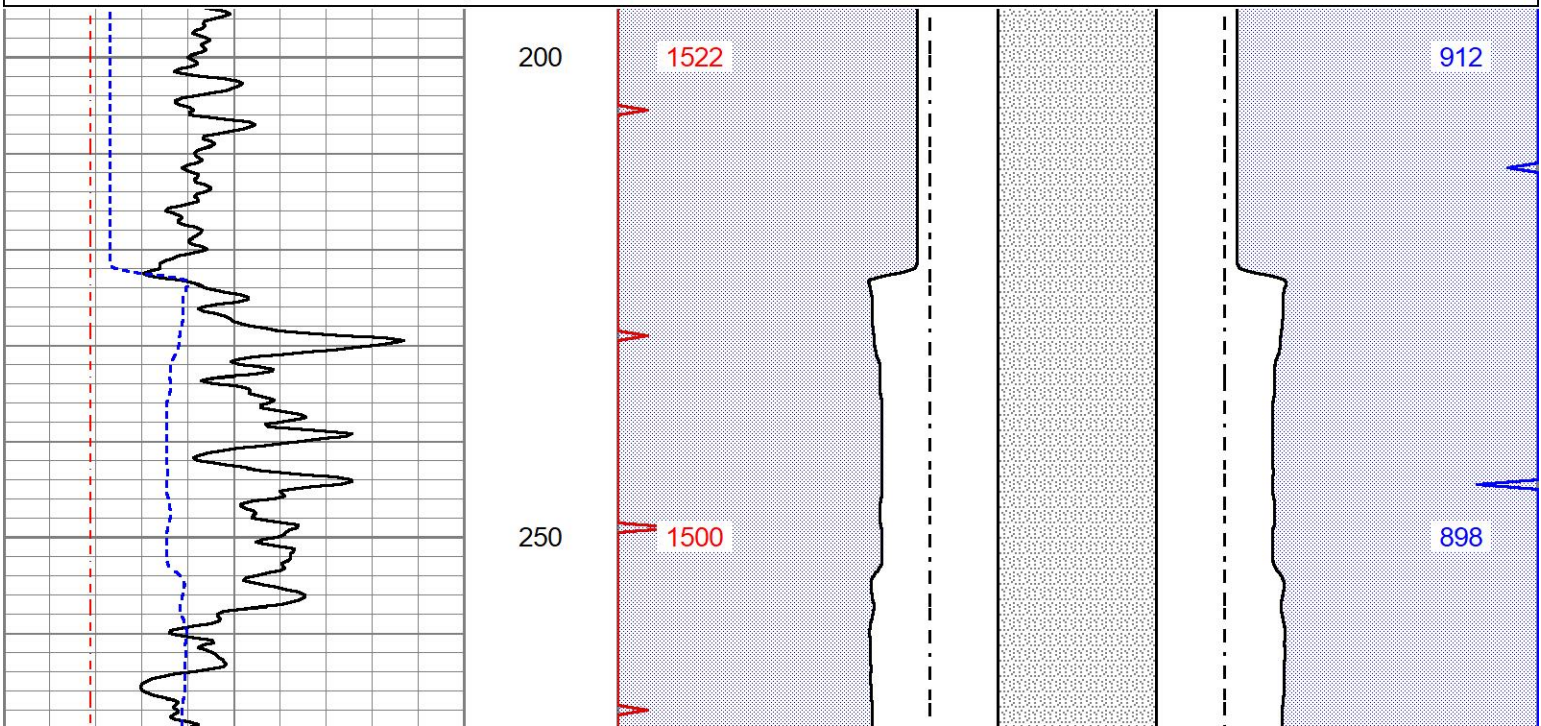


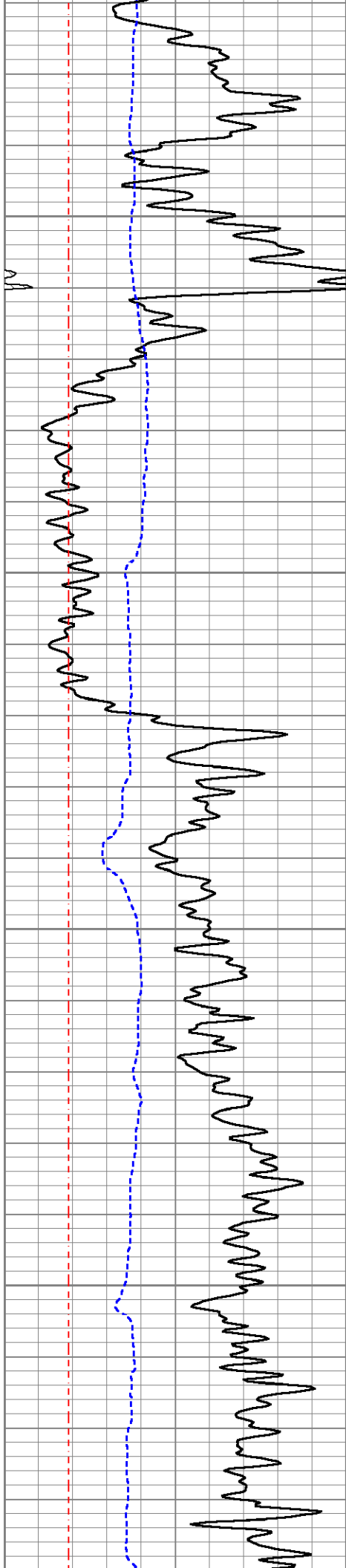
DETAIL SECTION

MAIN PASS

Database File satchell_worcester a #4-22.db
 Dataset Pathname Stack/pass3.1
 Presentation Format bhv5half
 Dataset Creation Sat Jul 15 14:00:24 2023
 Charted by Depth in Feet scaled 1:240

0	Gamma Ray (GAPI)	150	DCAL	DCAL
150	GR (GAPI)	300	BOREID	BOREID
6	DCAL (in)	16	Borehole Volume (ft3)	Annular Volume (ft3)
6	BOREID (in)	16		





300

1473

350

1446

400

1421

450

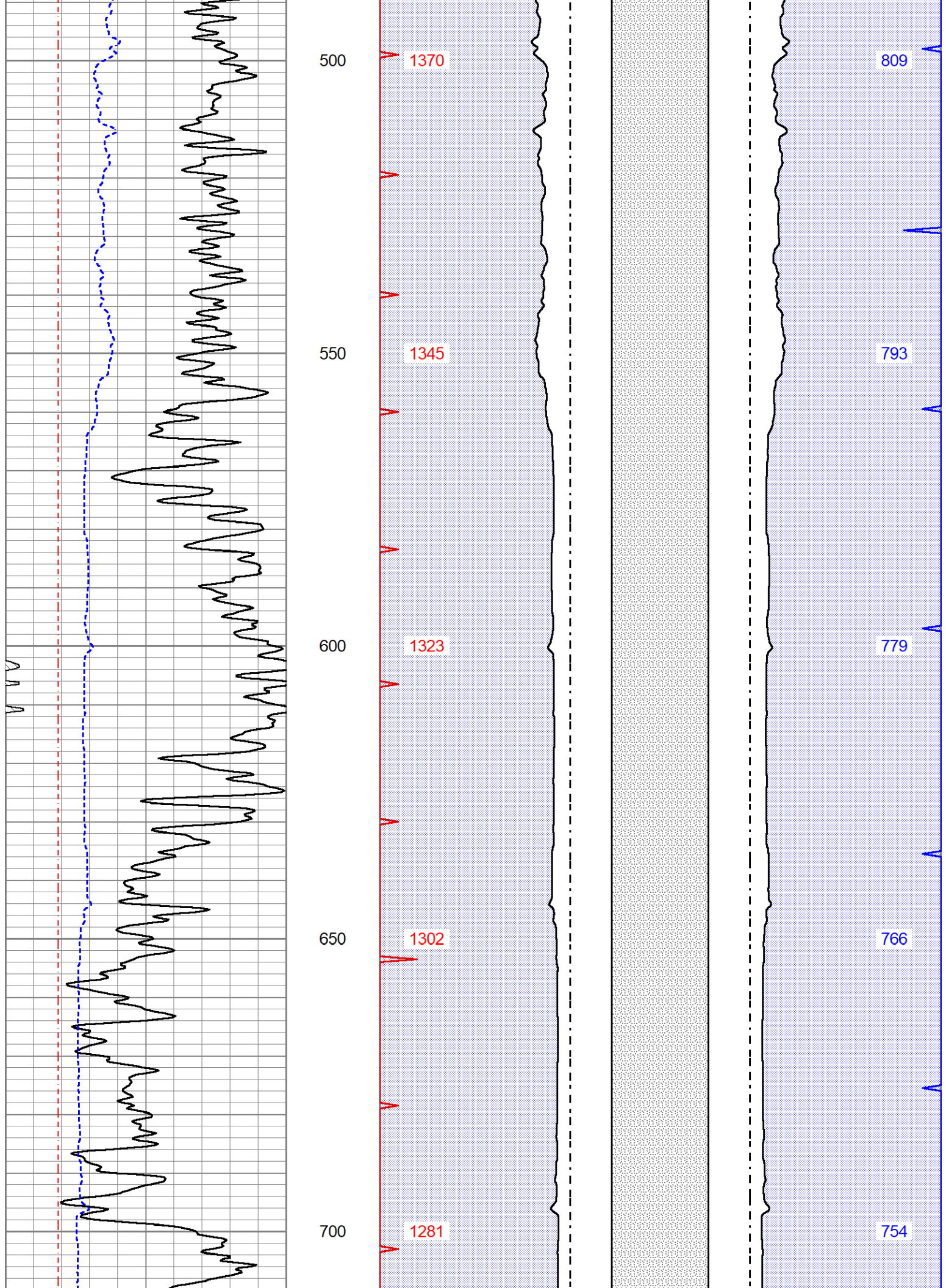
1395

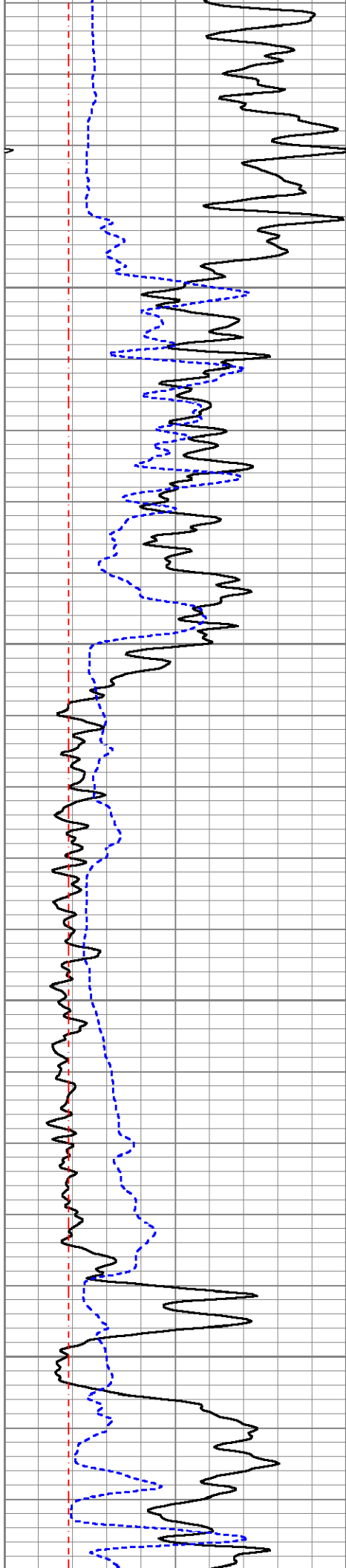
880

861

845

827





750

1261

800

1229

850

1209

900

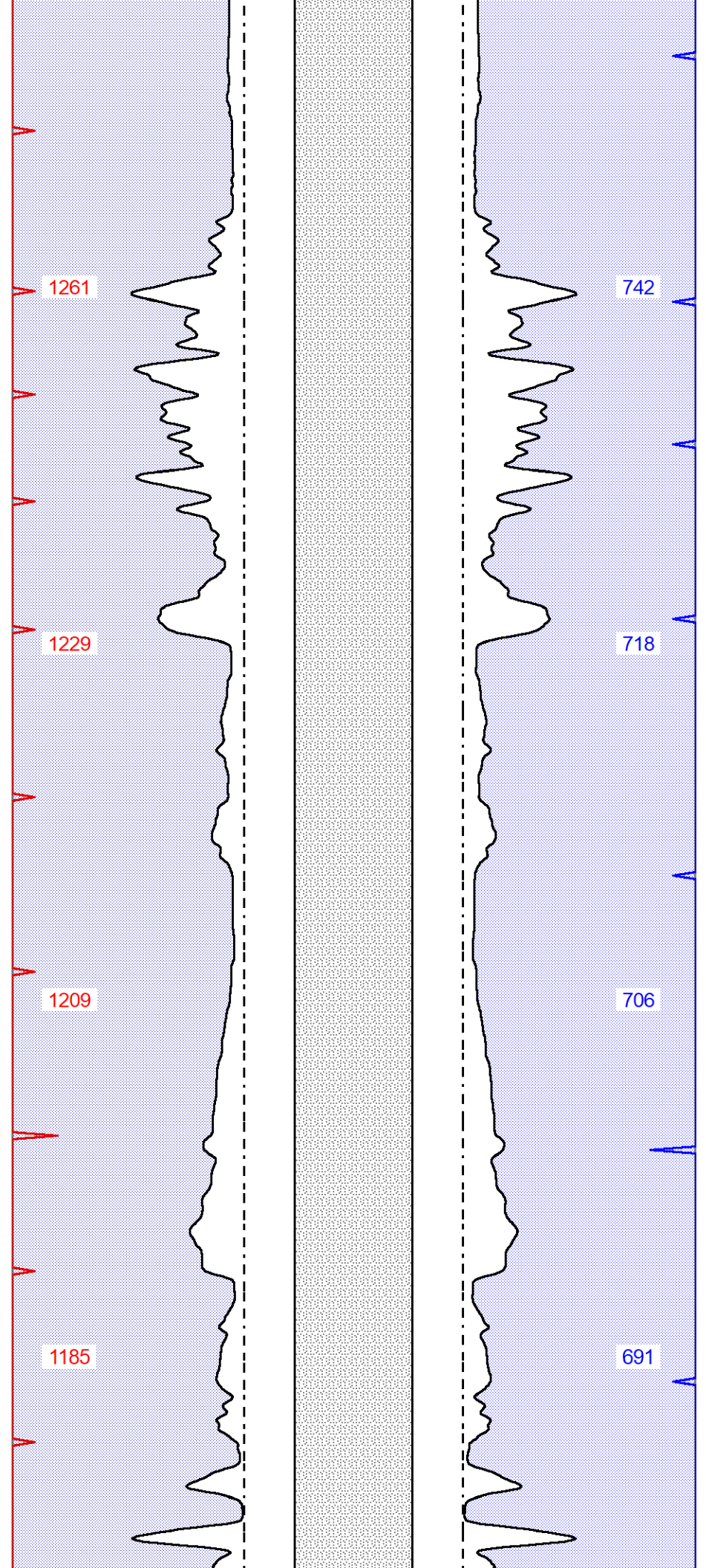
1185

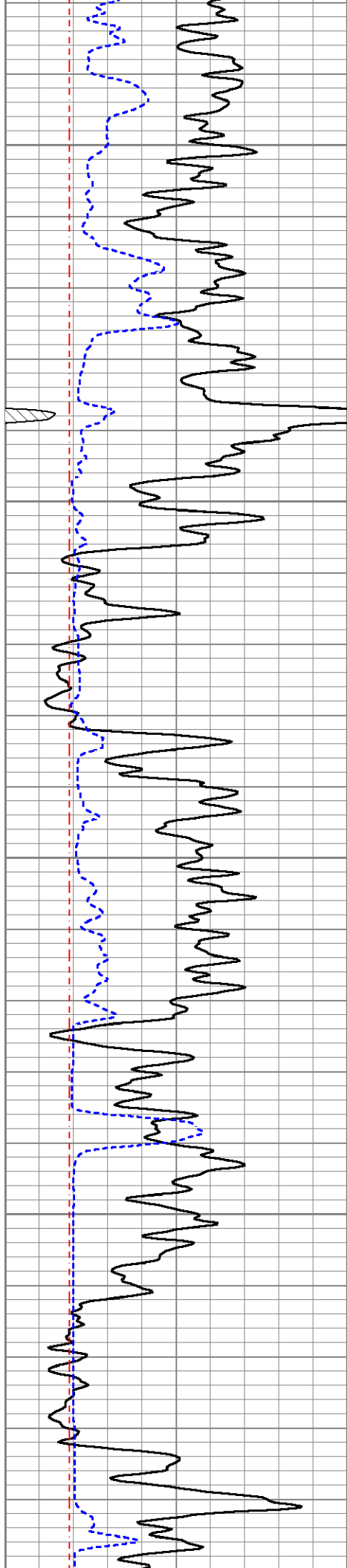
742

718

706

691





950

1162

1000

1141

1050

1123

1100

1102

1150

1085

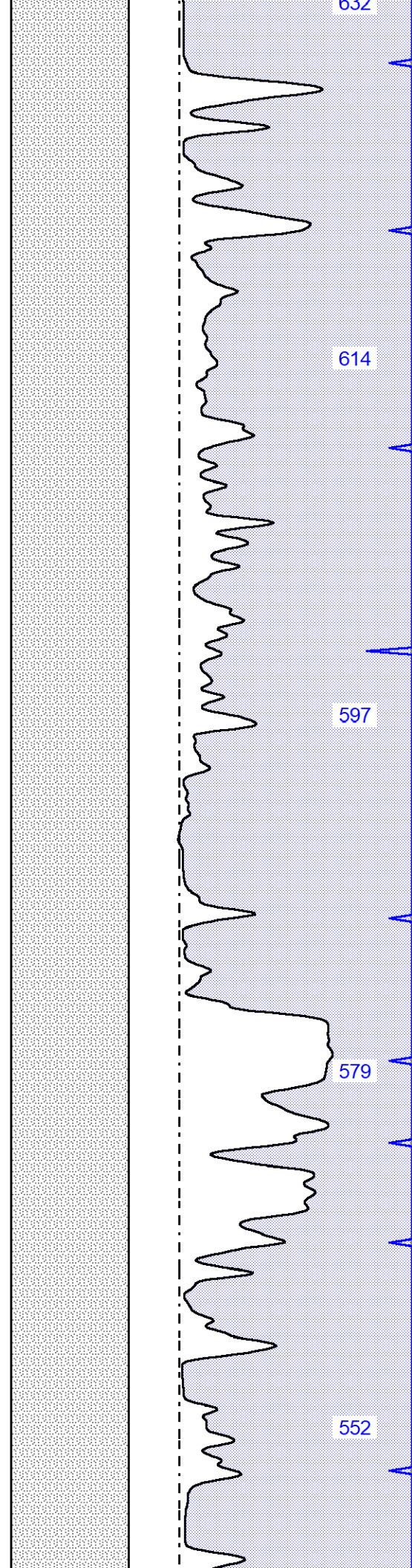
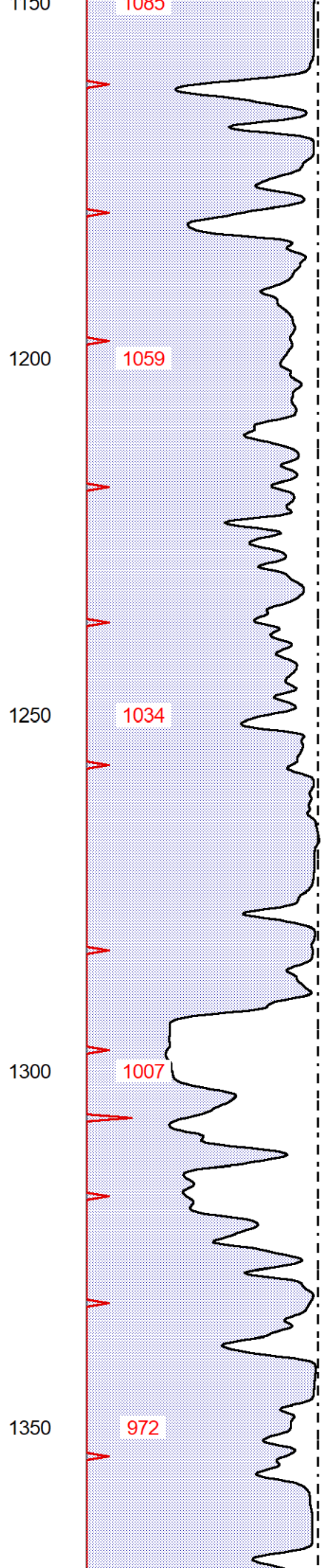
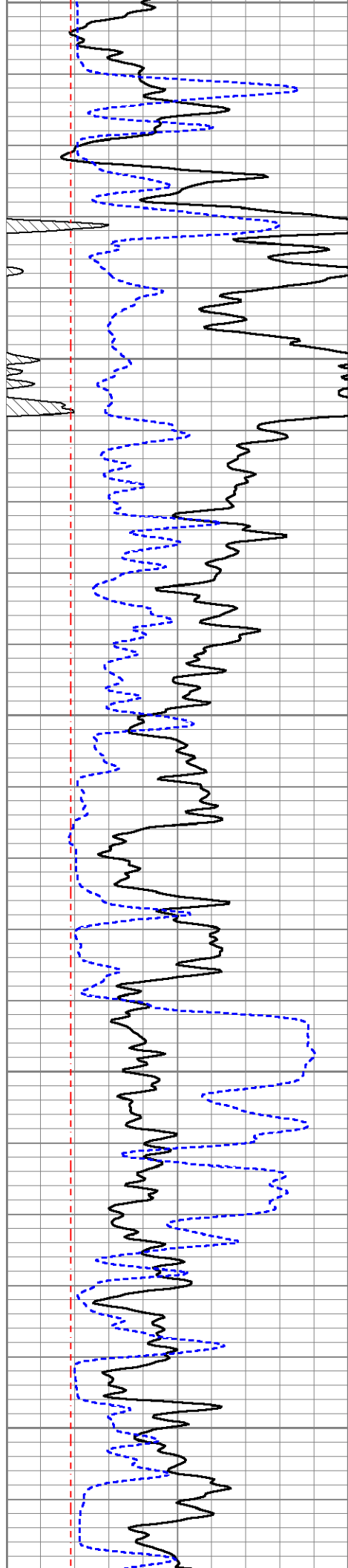
676

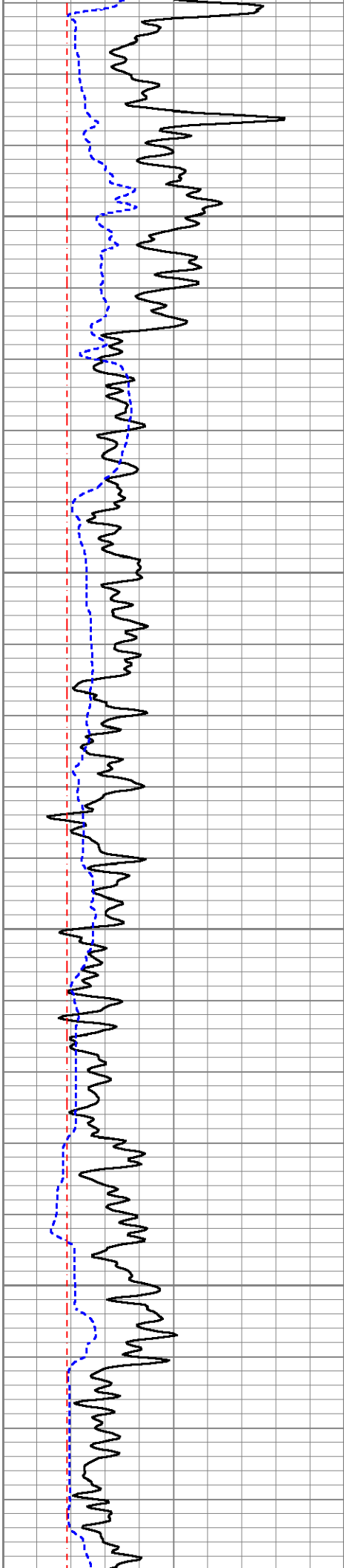
663

653

641

632





1400 951

1450 929

1500 909

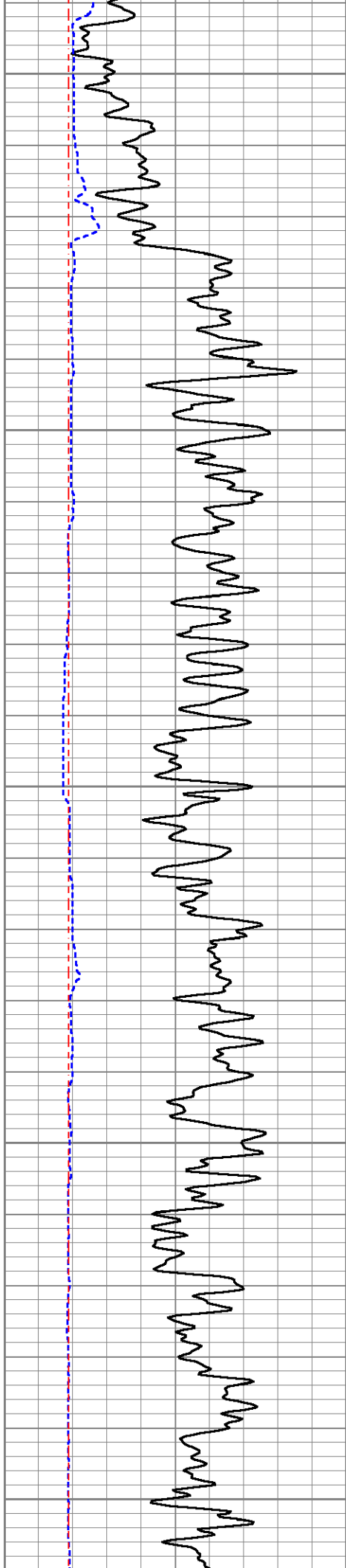
1550 891

539

525

514

505



1600

873

495

1650

856

485

1700

839

477

1750

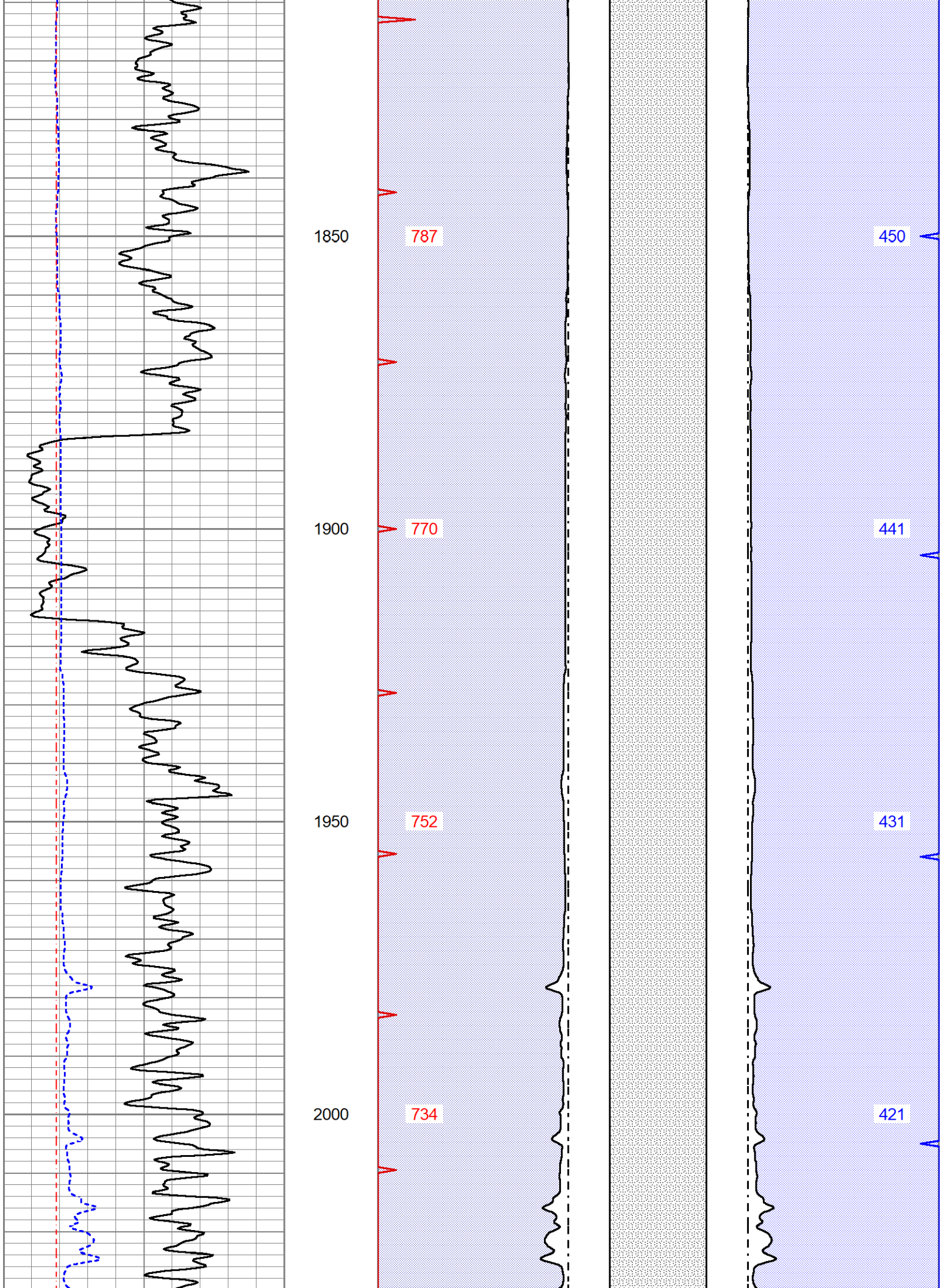
821

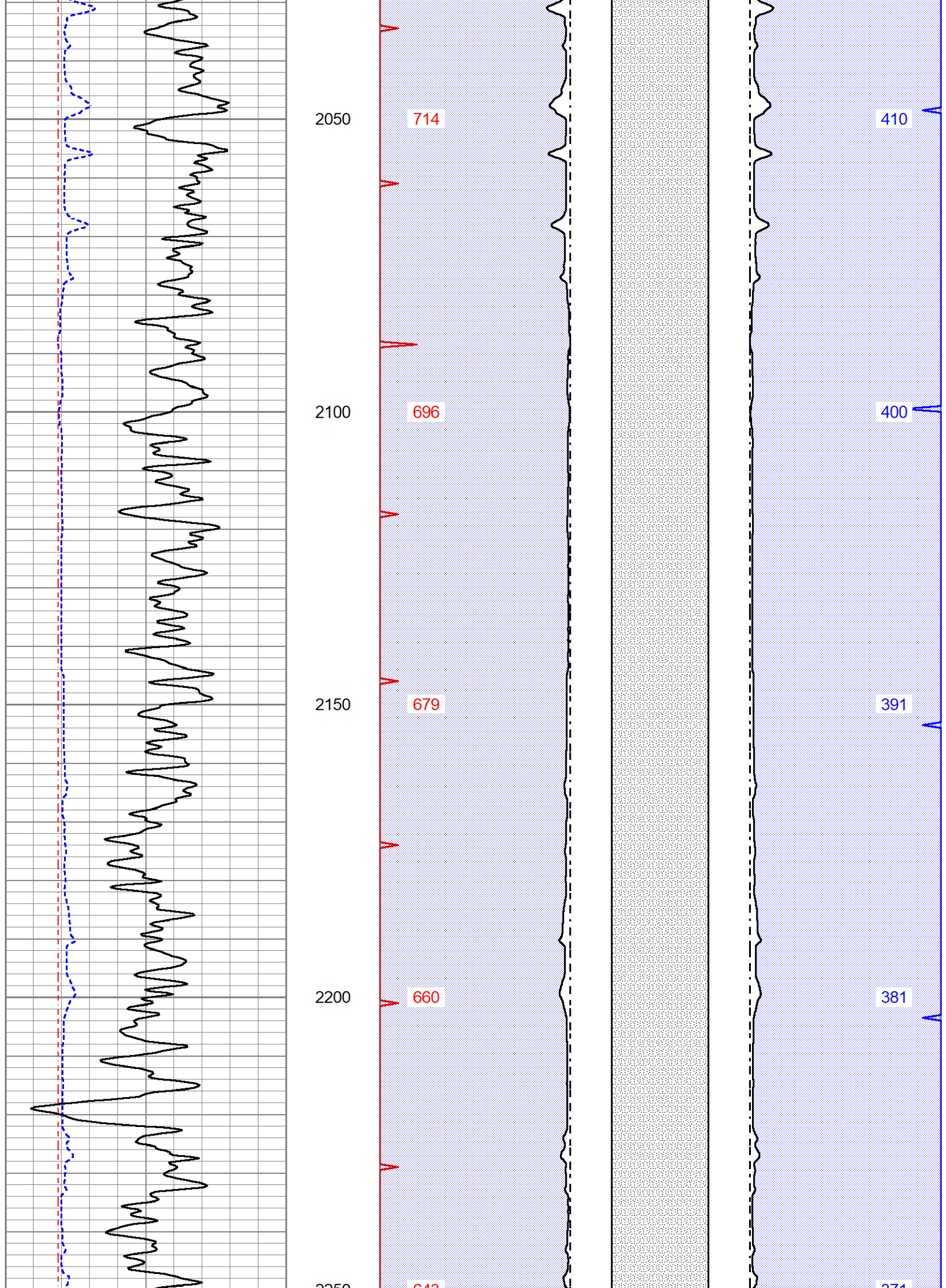
468

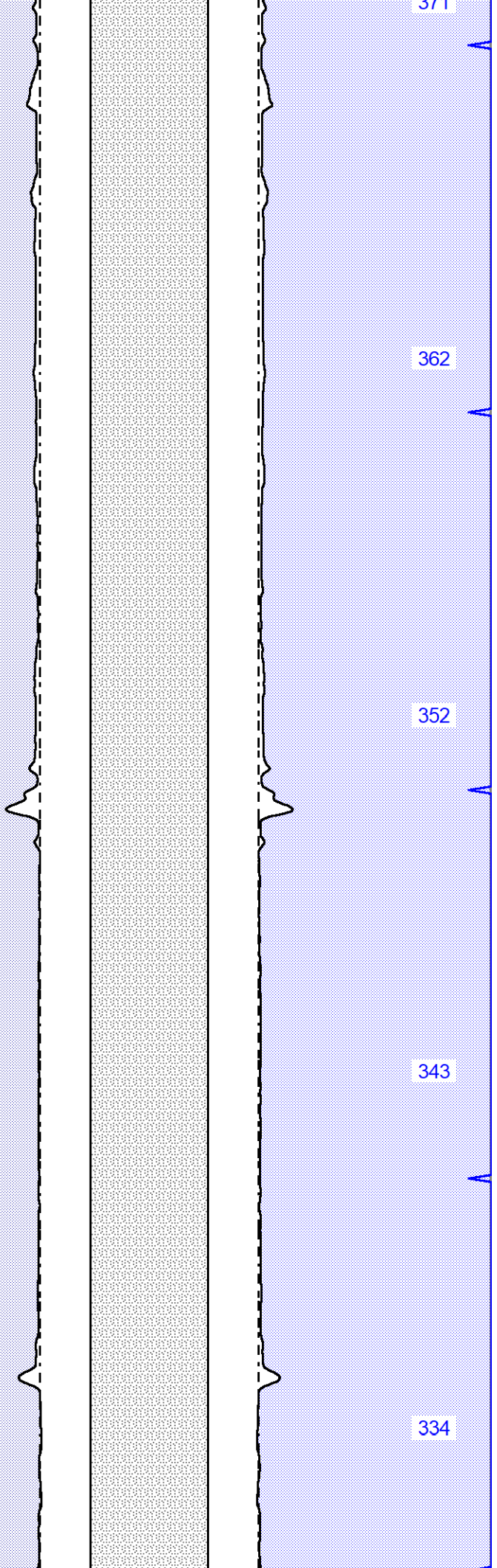
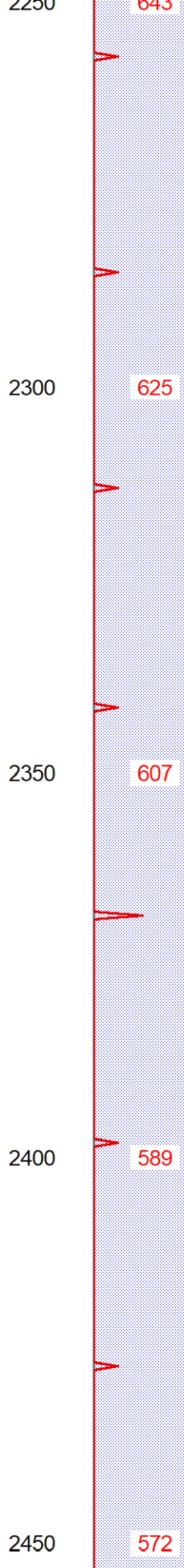
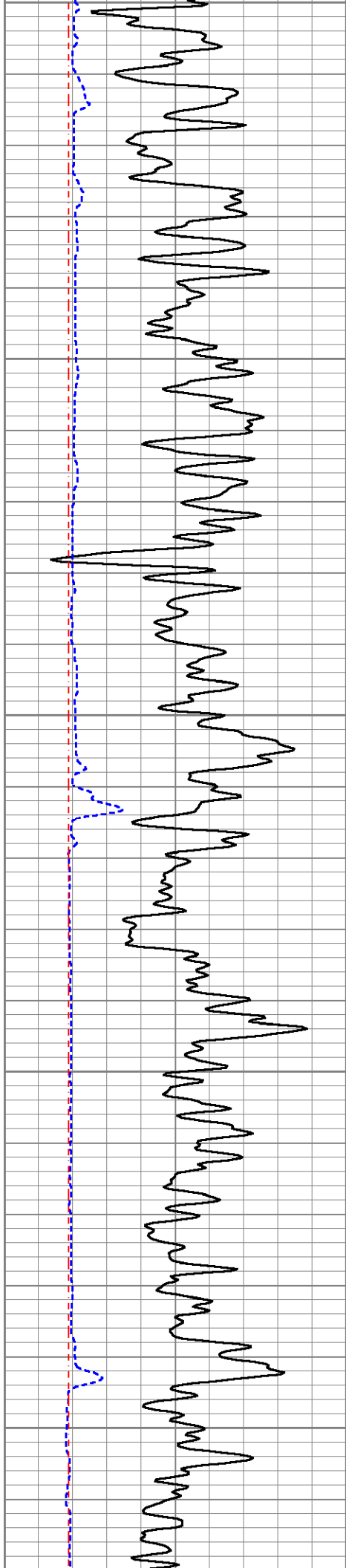
1800

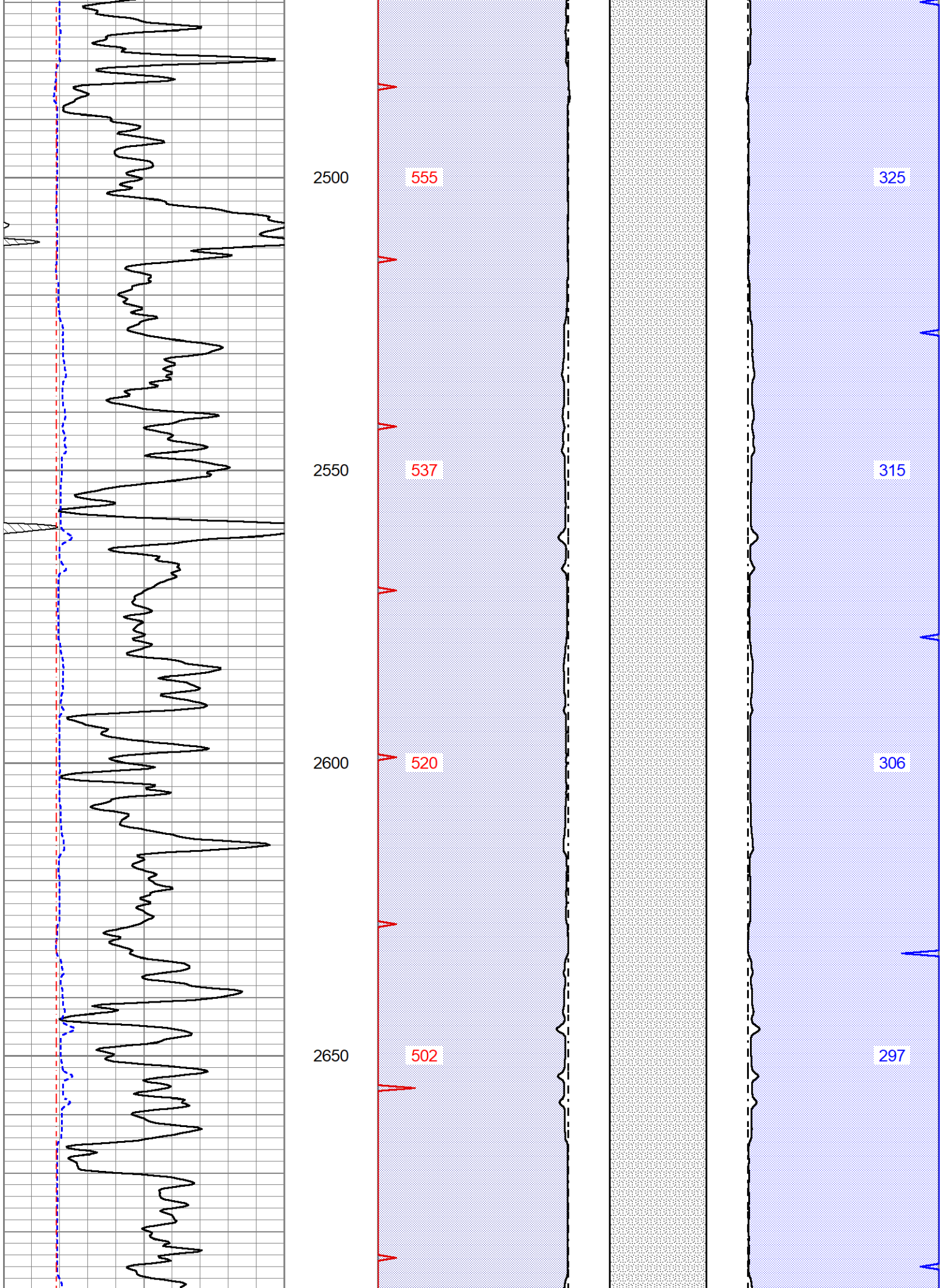
805

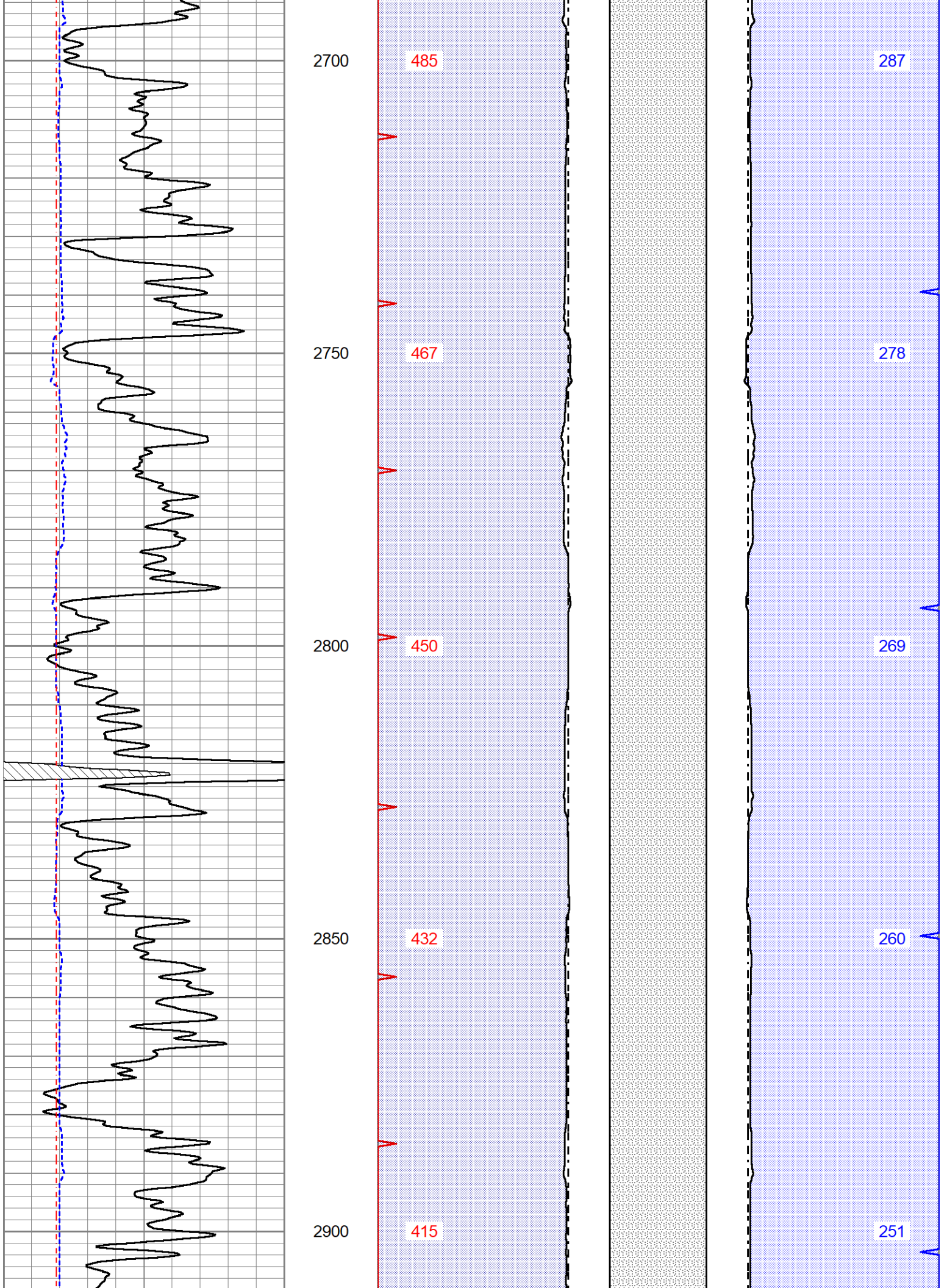
459

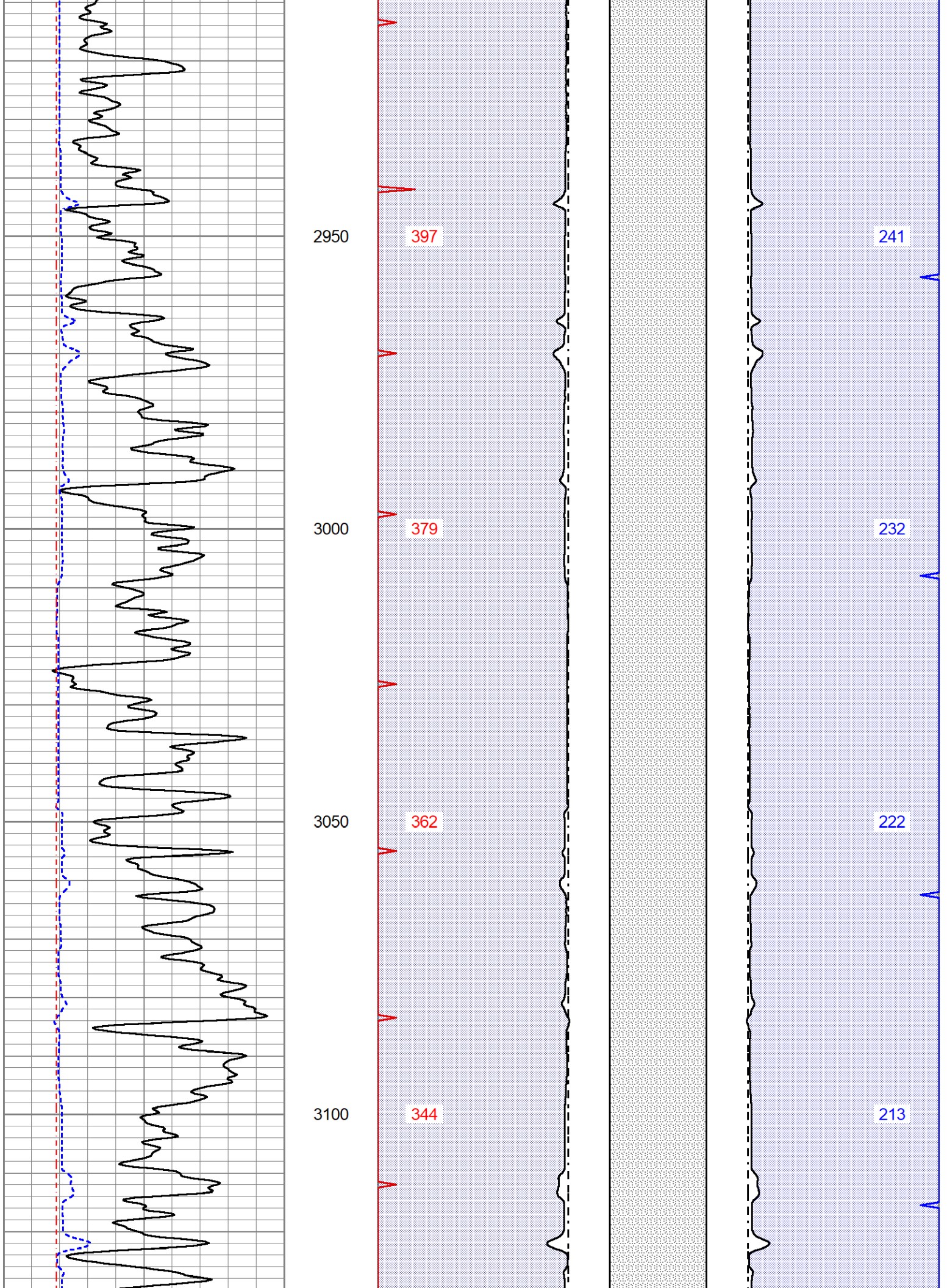


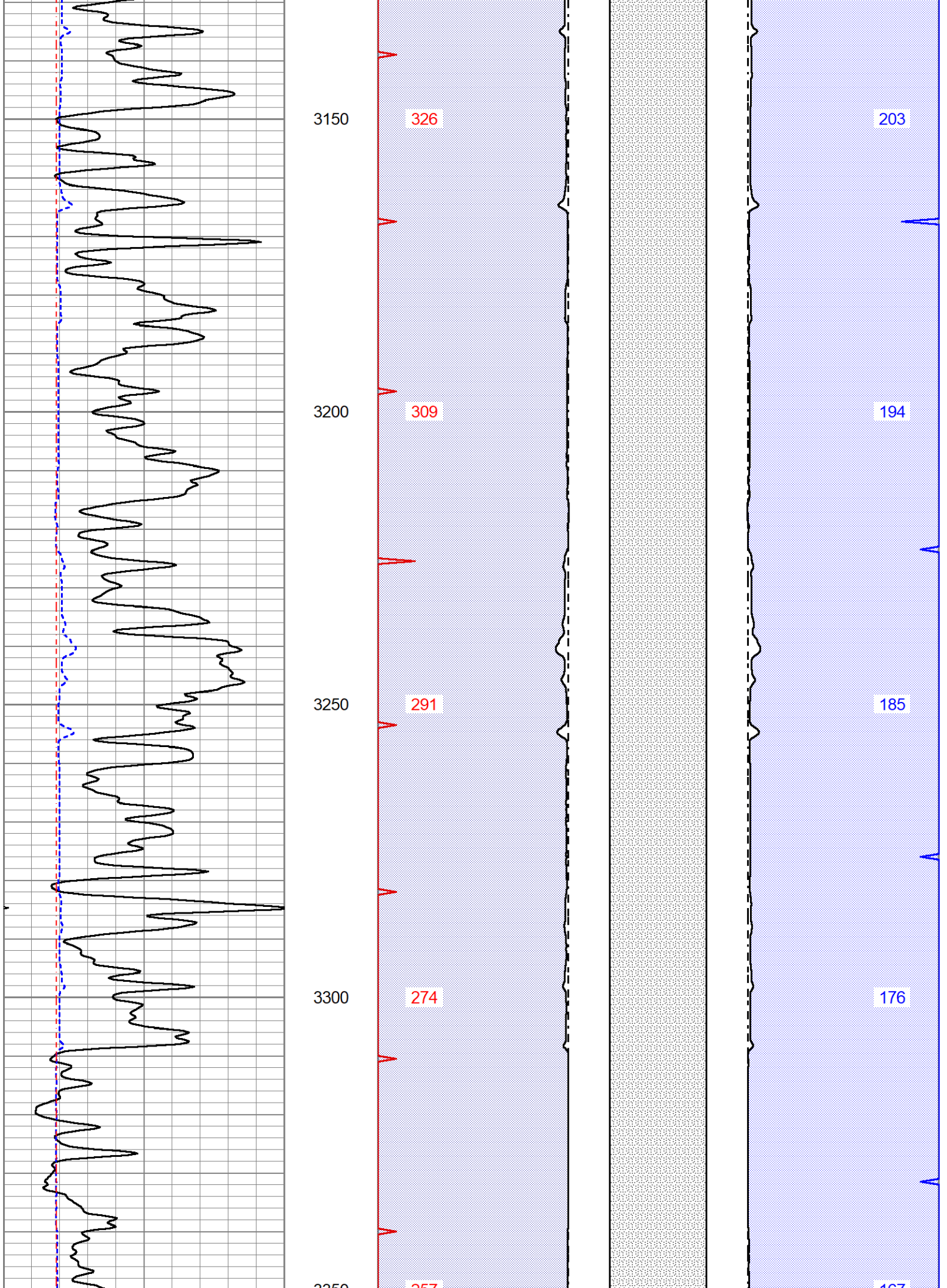


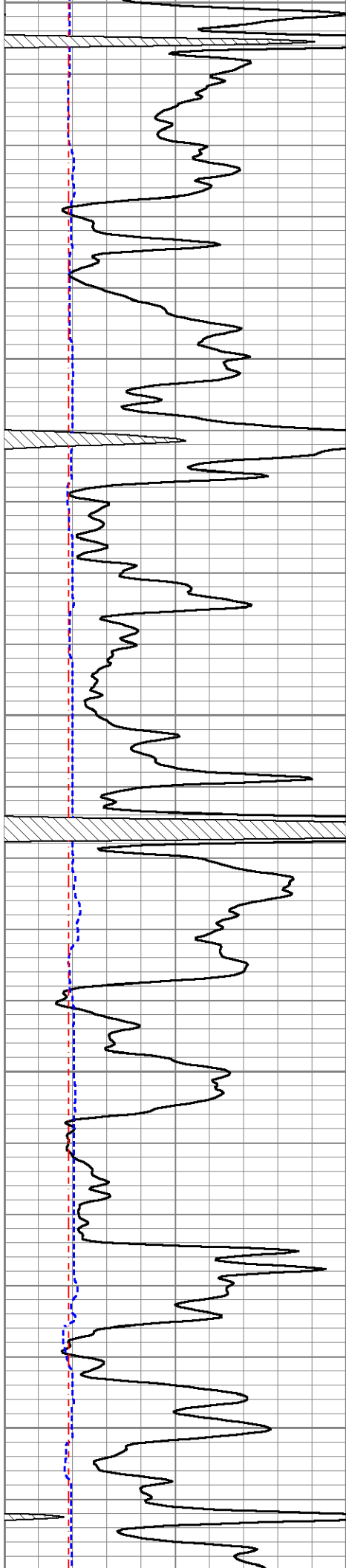












3330

257

167

3400

240

158

3450

222

149

3500

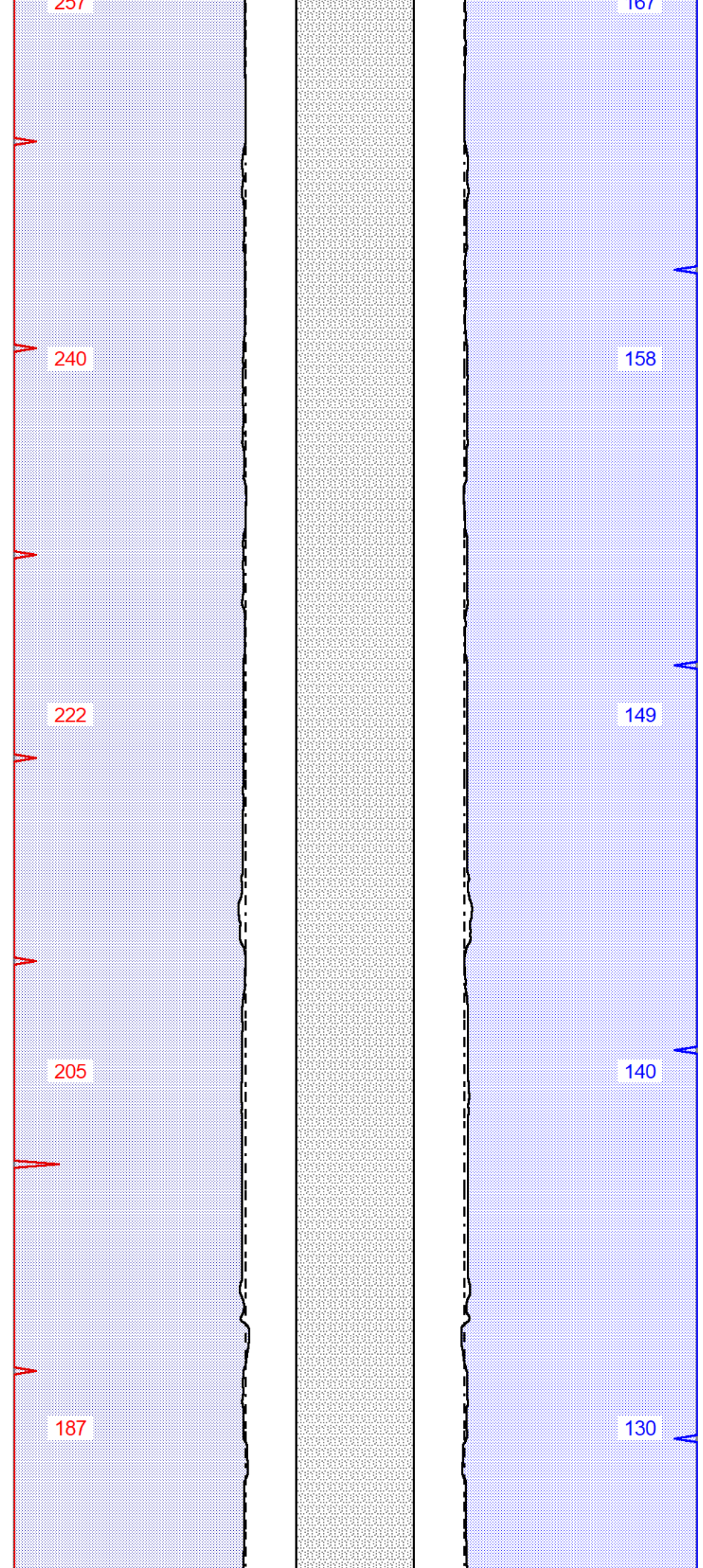
205

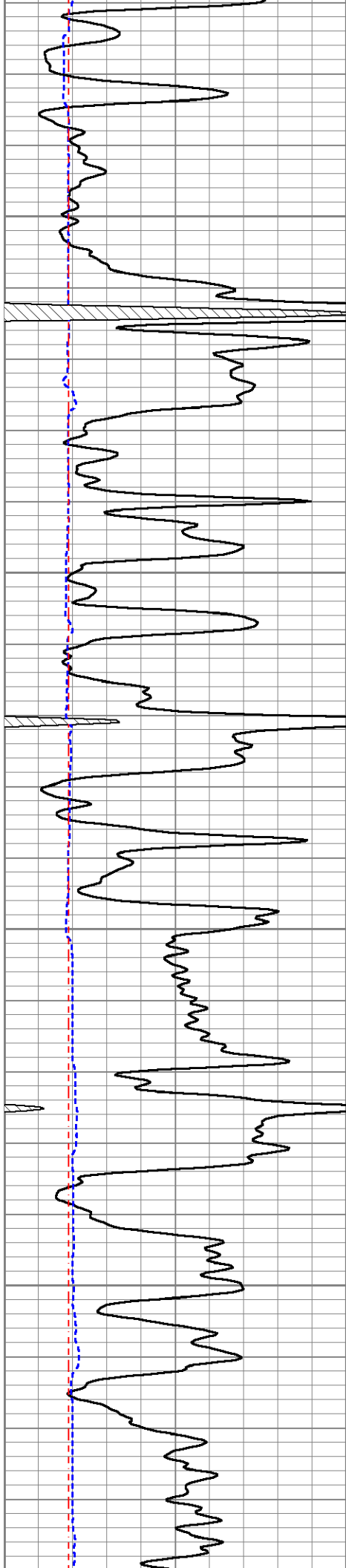
140

3550

187

130





3600

170

3650

153

3700

137

3750

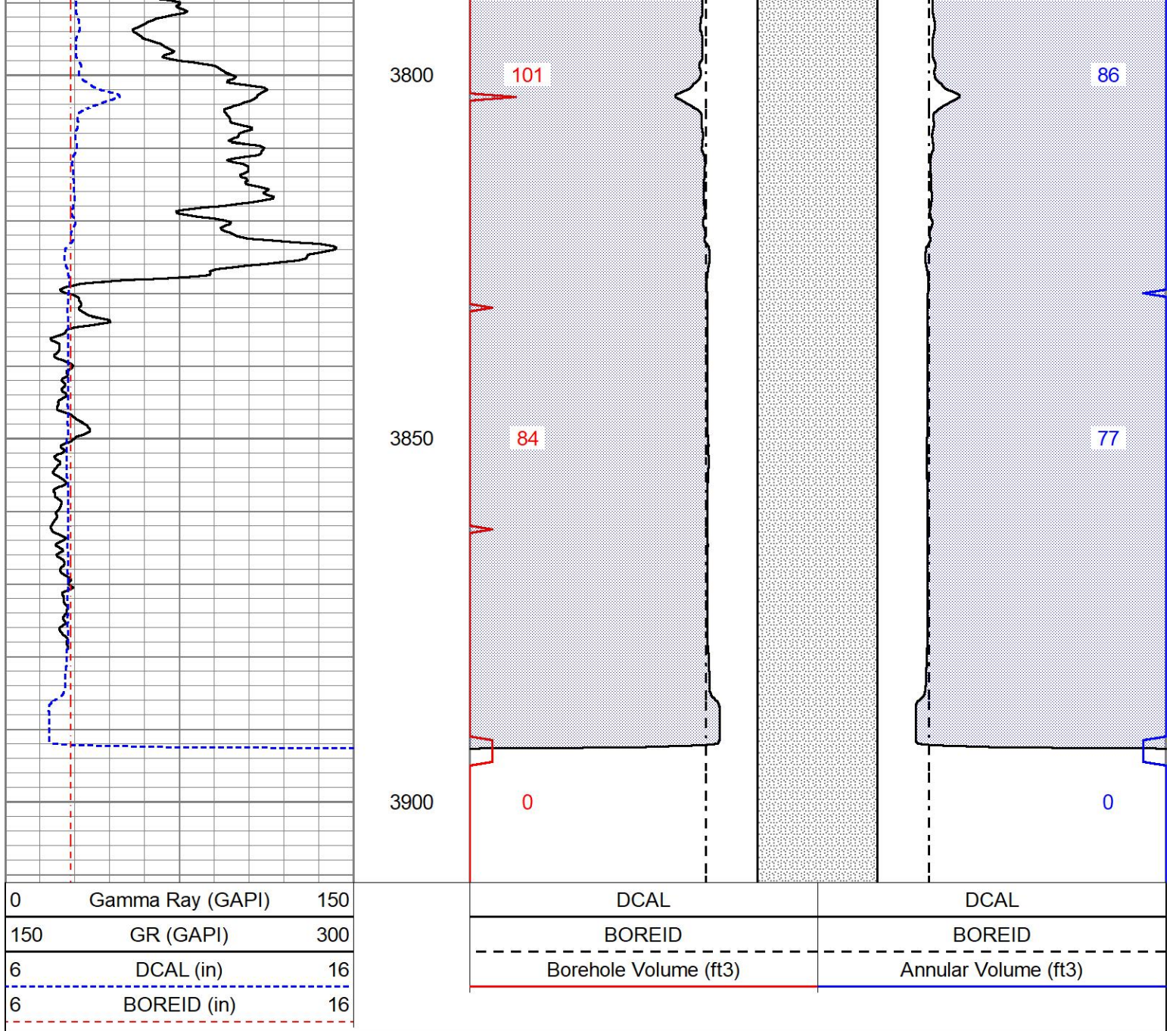
119

122

113

104

95



MIDWEST WIRELINE

Company Satchell Creek Petroleum LLC
 Well Worcester A #4-22
 Field Alda South
 County Graham
 State Kansas