

MICRO LOG



Company NEC OPERATING - KANSAS, LLC.  
 Well KING OF WHALES #1  
 Field TROUSDALE NORTH  
 County EDWARDS State KANSAS

Location: API #: 15-047-21672-0000  
 1975' FSL & 650' FEL  
 NW - SE - NE - SE  
 SEC 8 TWP 26S RGE 16W  
 Permanent Datum GROUND LEVEL Elevation 2086  
 Log Measured From KELLY BUSHING 8' A.G.L.  
 Drilling Measured From KELLY BUSHING  
 Other Services CDL/CNL/PE DIL  
 Elevation K.B. 2094 D.F. 2092 G.L. 2086

Date	7/16/23
Run Number	TWO
Depth Driller	4900
Depth Logger	4896
Bottom Logged Interval	4894
Top Log Interval	3300
Casing Driller	8 5/8"@350'
Casing Logger	350
Bit Size	7 7/8"
Type Fluid in Hole	CHEMICAL MUD
Density / Viscosity	9.2/51
PH / Fluid Loss	9.5/7.2
Source of Sample	FLOWLINE
Rm @ Meas. Temp	.700@92F
Rmf @ Meas. Temp	.525@92F
Rmc @ Meas. Temp	.840@92F
Source of Rmf / Rmc	MEASUREMENT
Rm @ BHT	.519@124F
Time Circulation Stopped	4 HOURS
Time Logger on Bottom	2:00 P.M.
Maximum Recorded Temperature	124F
Equipment Number	922339
Location	HAYS, KANSAS
Recorded By	JEFF LUEBBERS
Witnessed By	KEATON JONES

<<< Fold Here >>>

All interpretations are opinions based on inferences from electrical or other measurements and we cannot and do not guarantee the accuracy or correctness of any interpretation, and we shall not, except in the case of gross or willful negligence on our part, be liable or responsible for any loss, costs, damages, or expenses incurred or sustained by anyone resulting from any interpretation made by any of our officers, agents or employees. These interpretations are also subject to our general terms and conditions set out in our current Price Schedule.

15-047-21672-0000 Comments

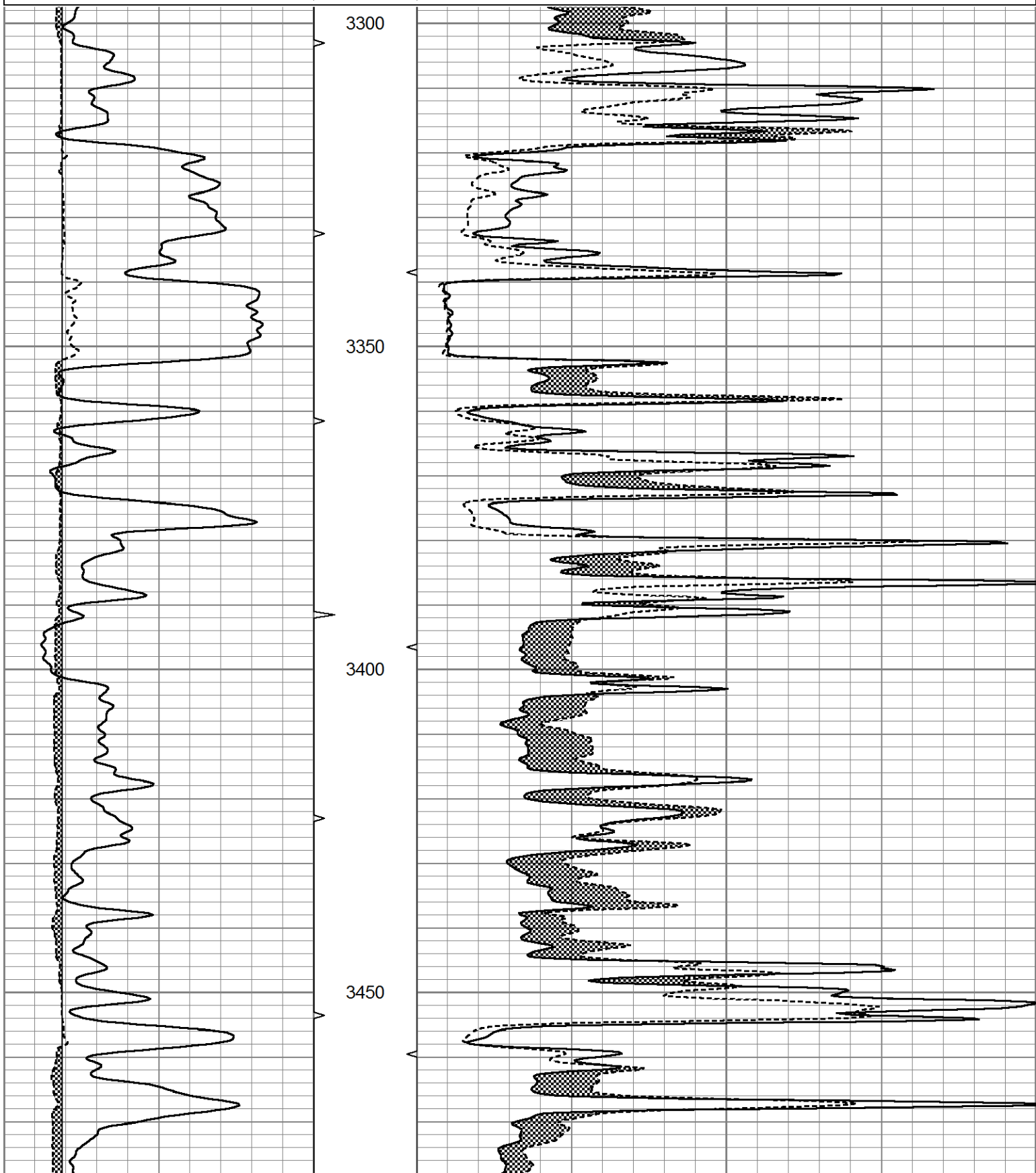
THANK YOU FOR USING ELI WIRELINE HAYS, KANSAS (785) 628-6395  
 DIRECTIONS  
 TROUSDALE, KS., 1 1/2 S., W. INTO

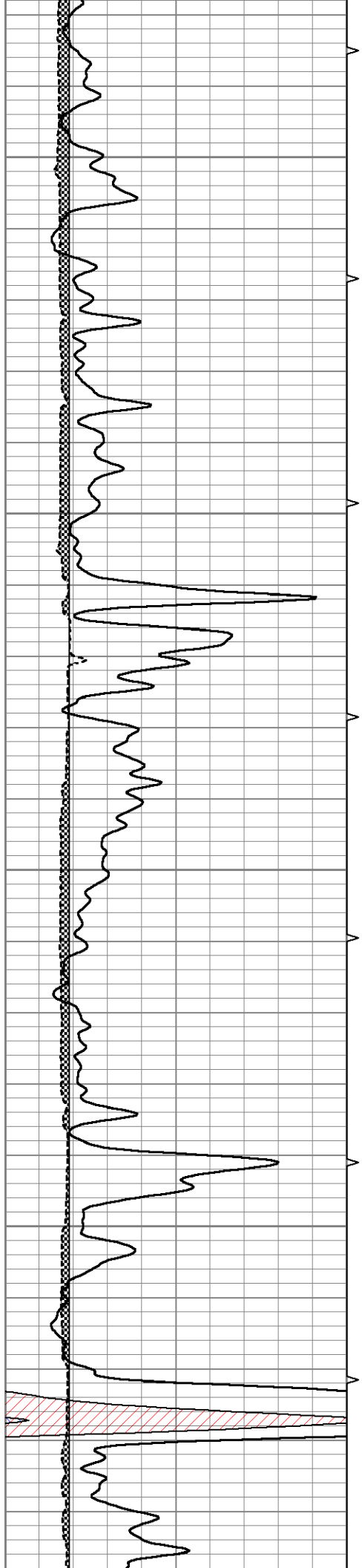


MAIN SECTION

Database File 7305pe.db  
 Dataset Pathname pass8.1  
 Presentation Format micro  
 Dataset Creation Sun Jul 16 15:14:11 2023  
 Charted by Depth in Feet scaled 1:240

0	GR (GAPI)	150	ABHV	0	MEL20 (Ohm-m)	40
6	MELCAL (in)	16	10 (ft3)	0	MEL15 (Ohm-m)	40
			ABHV			
			0 (ft3)	10		



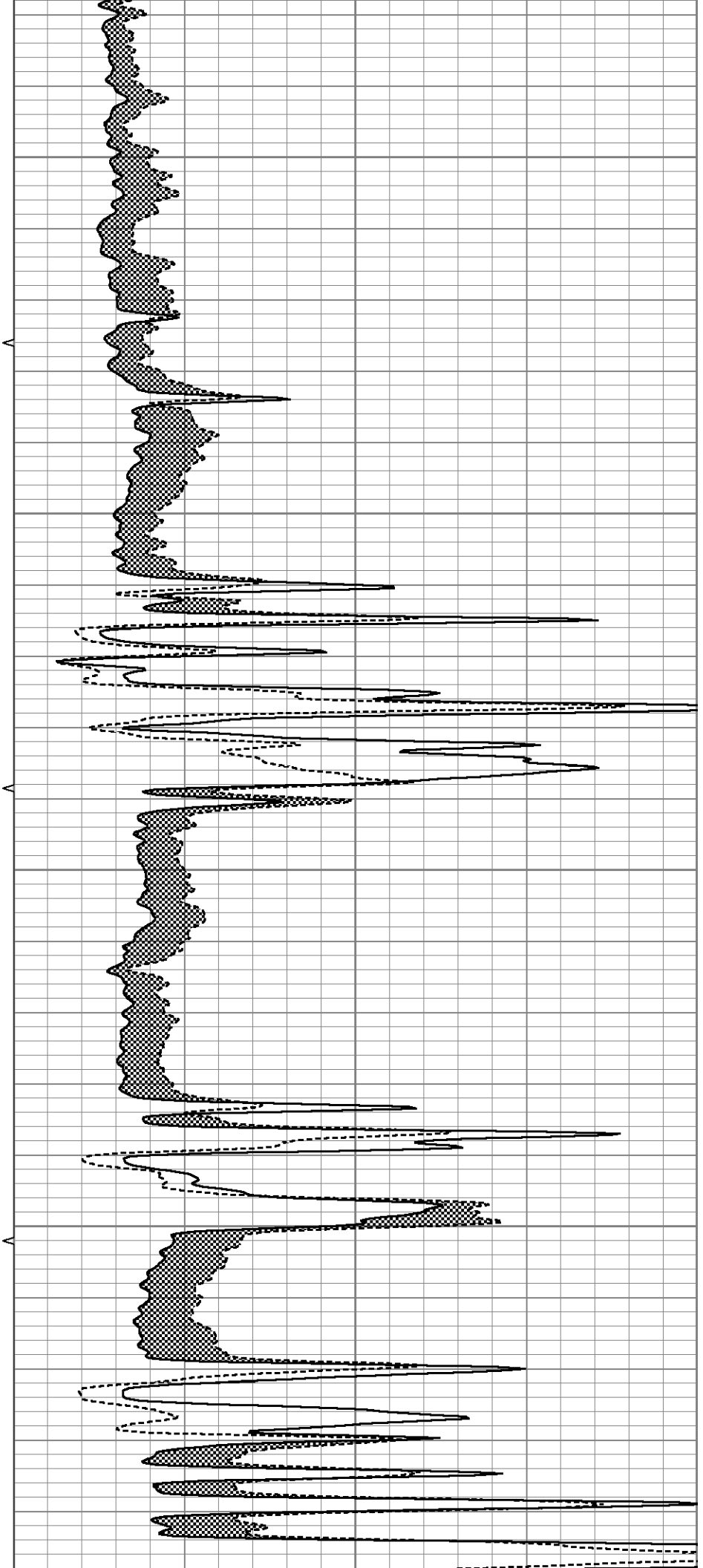


3500

3550

3600

3650

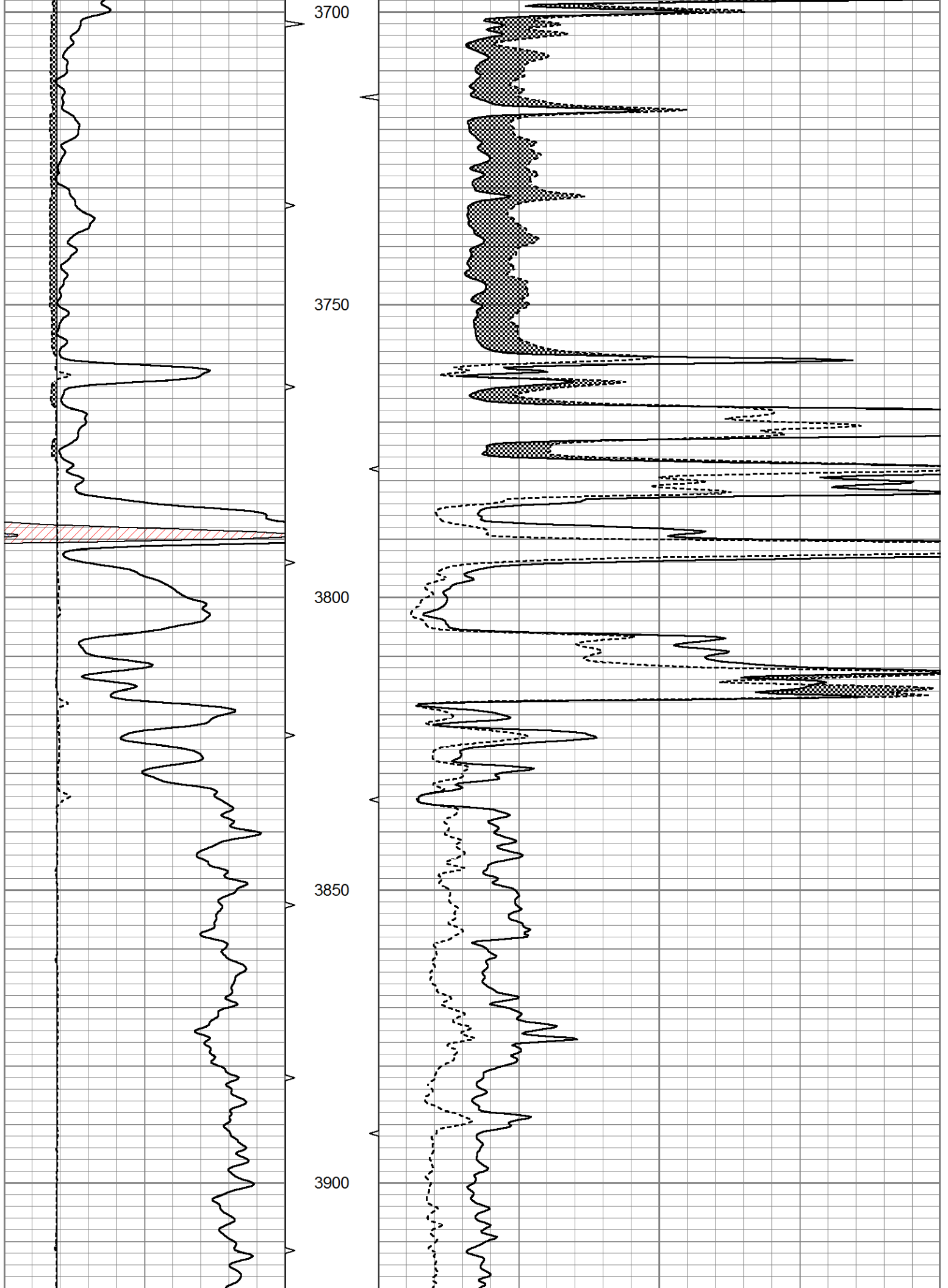


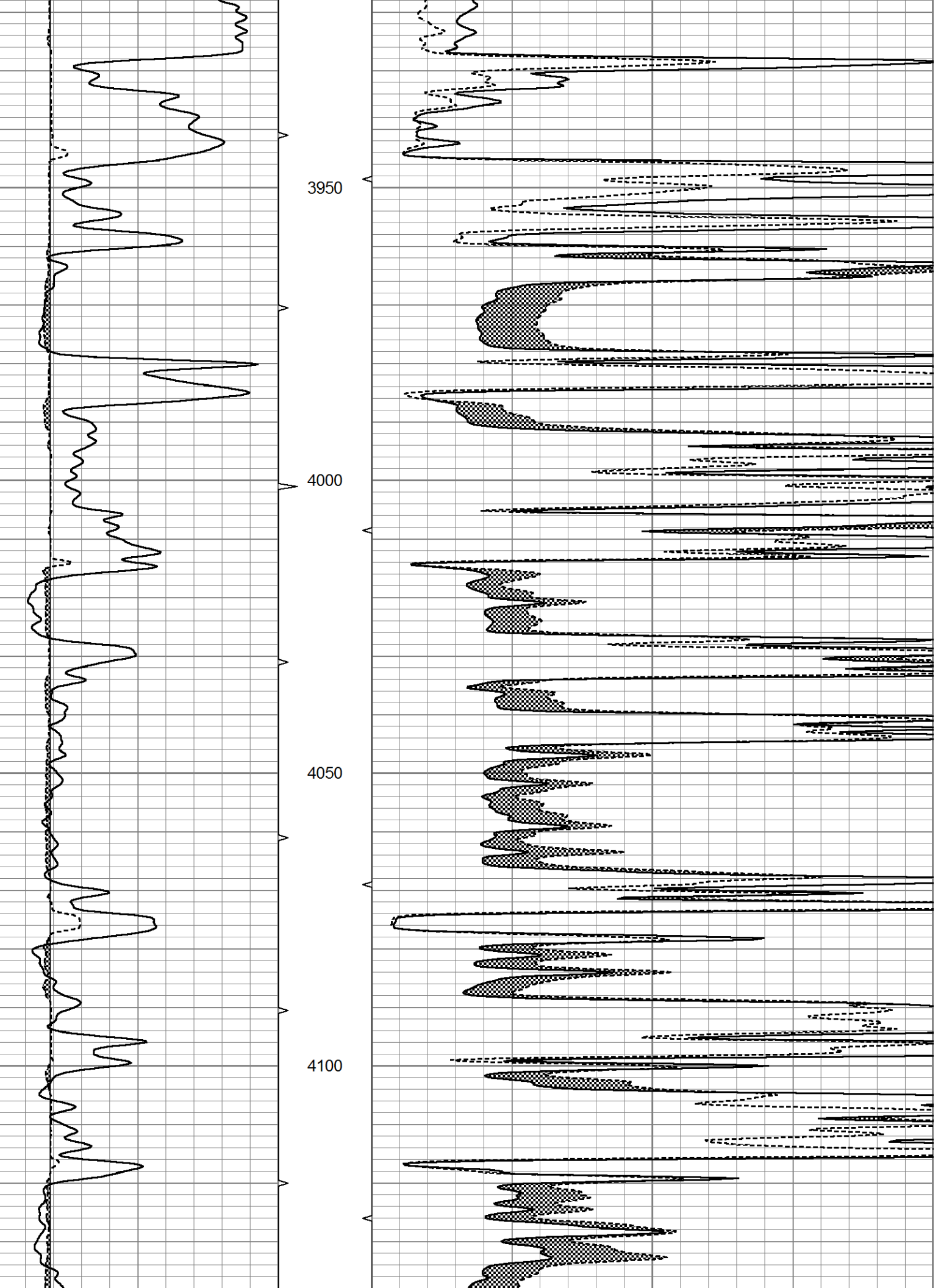
3500

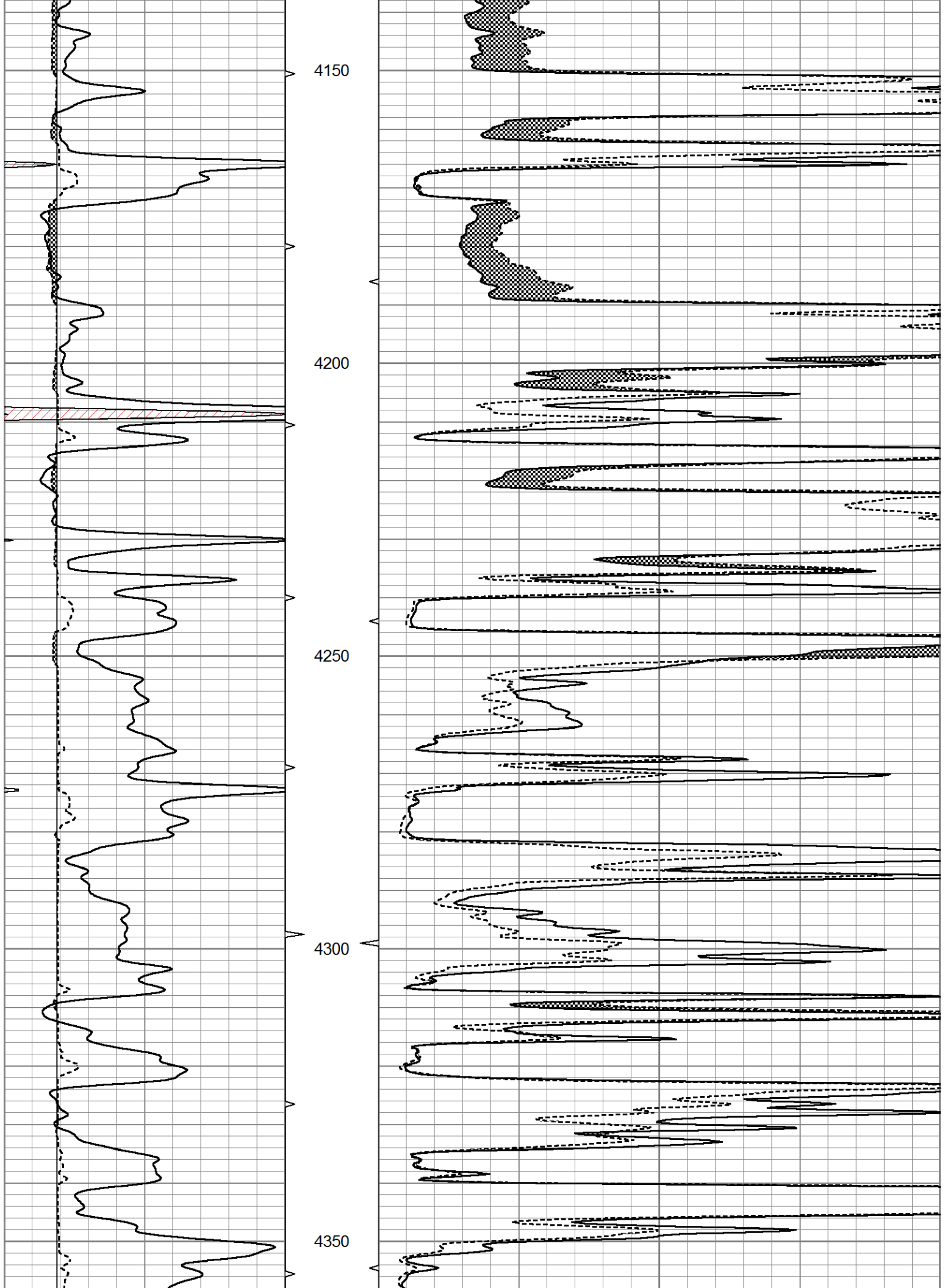
3550

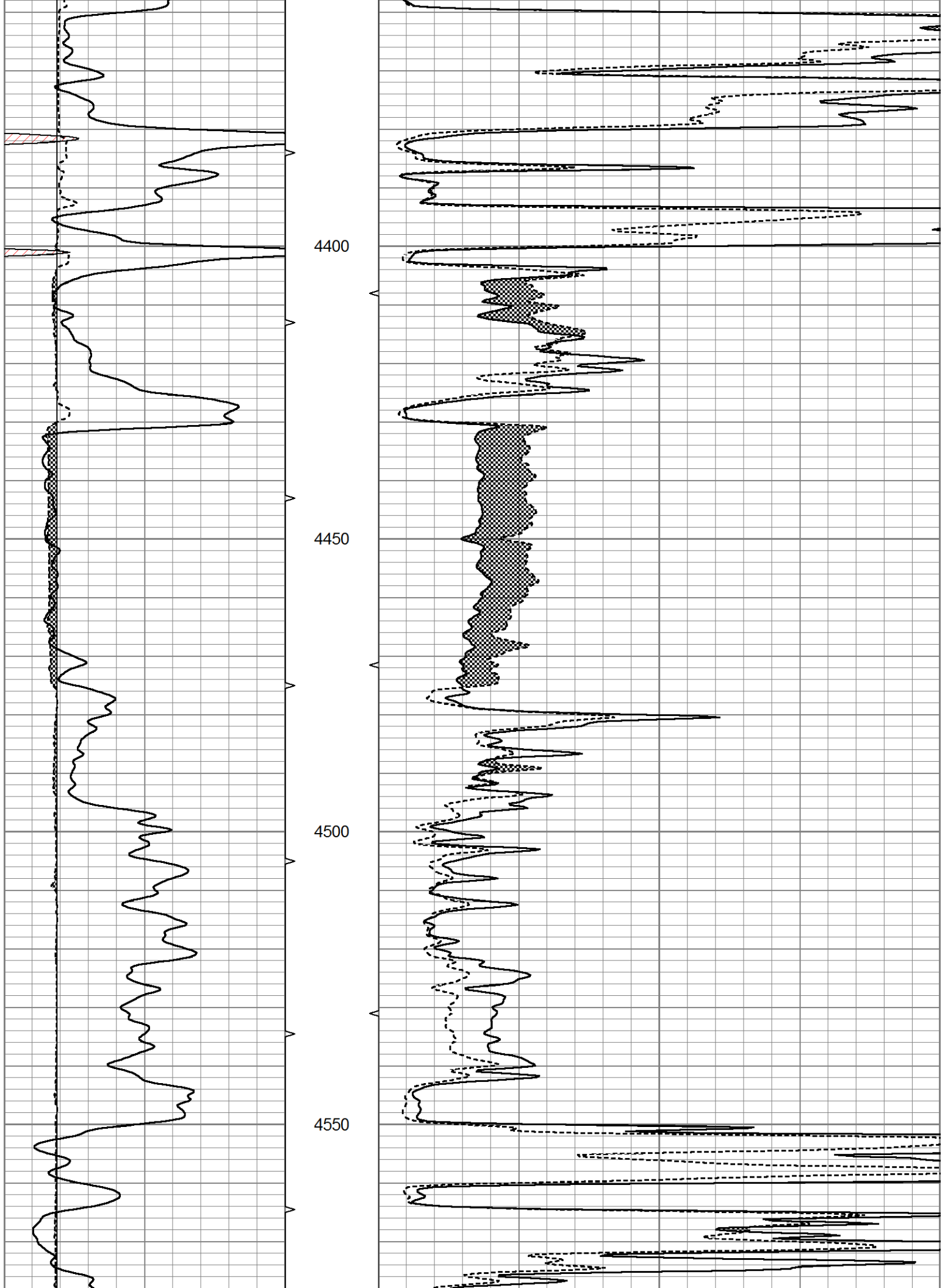
3600

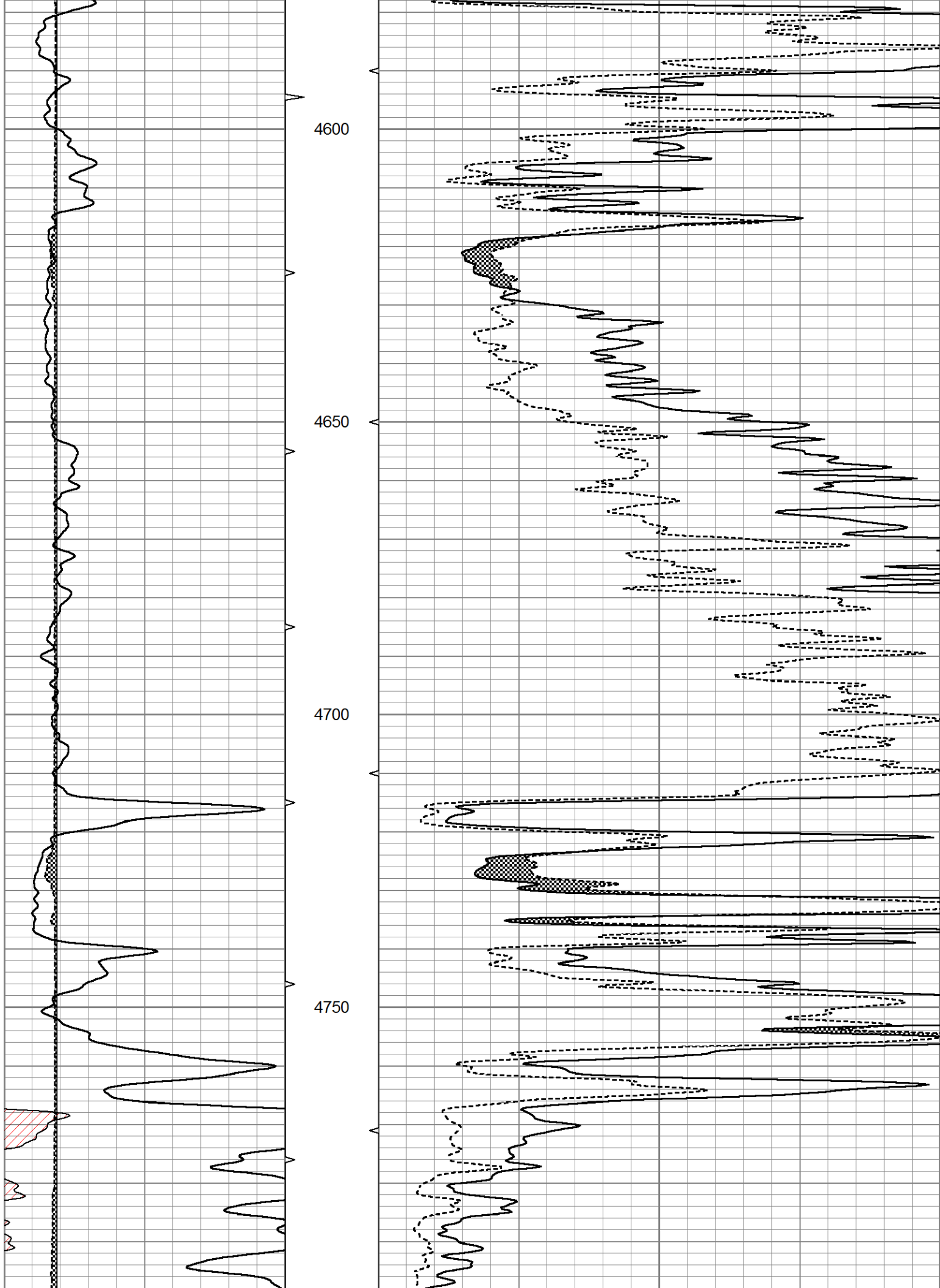
3650

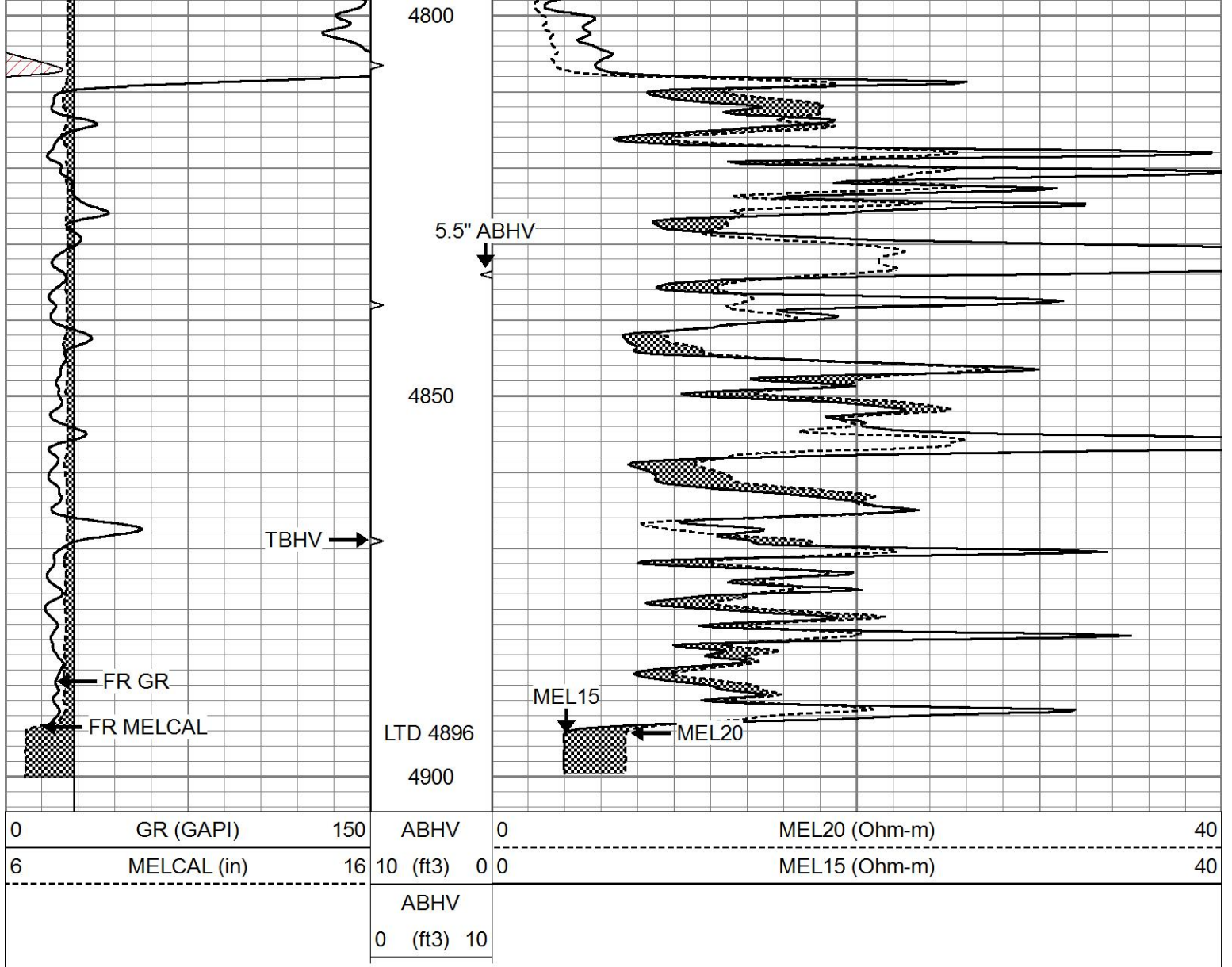








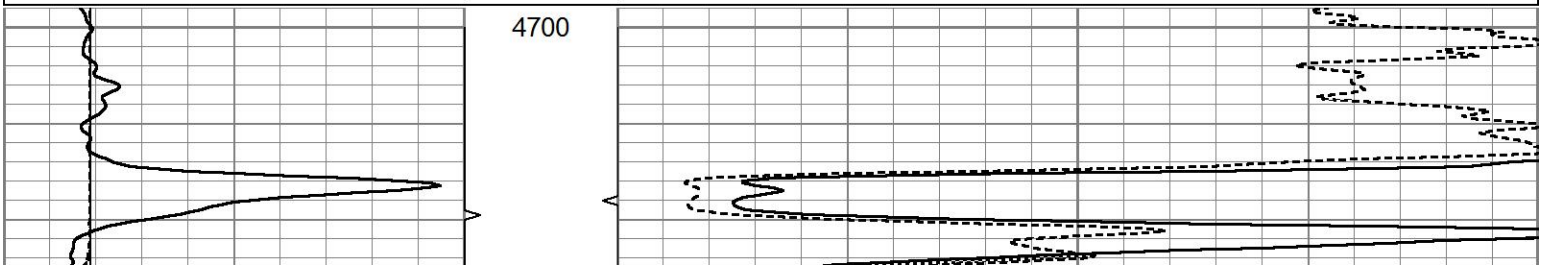


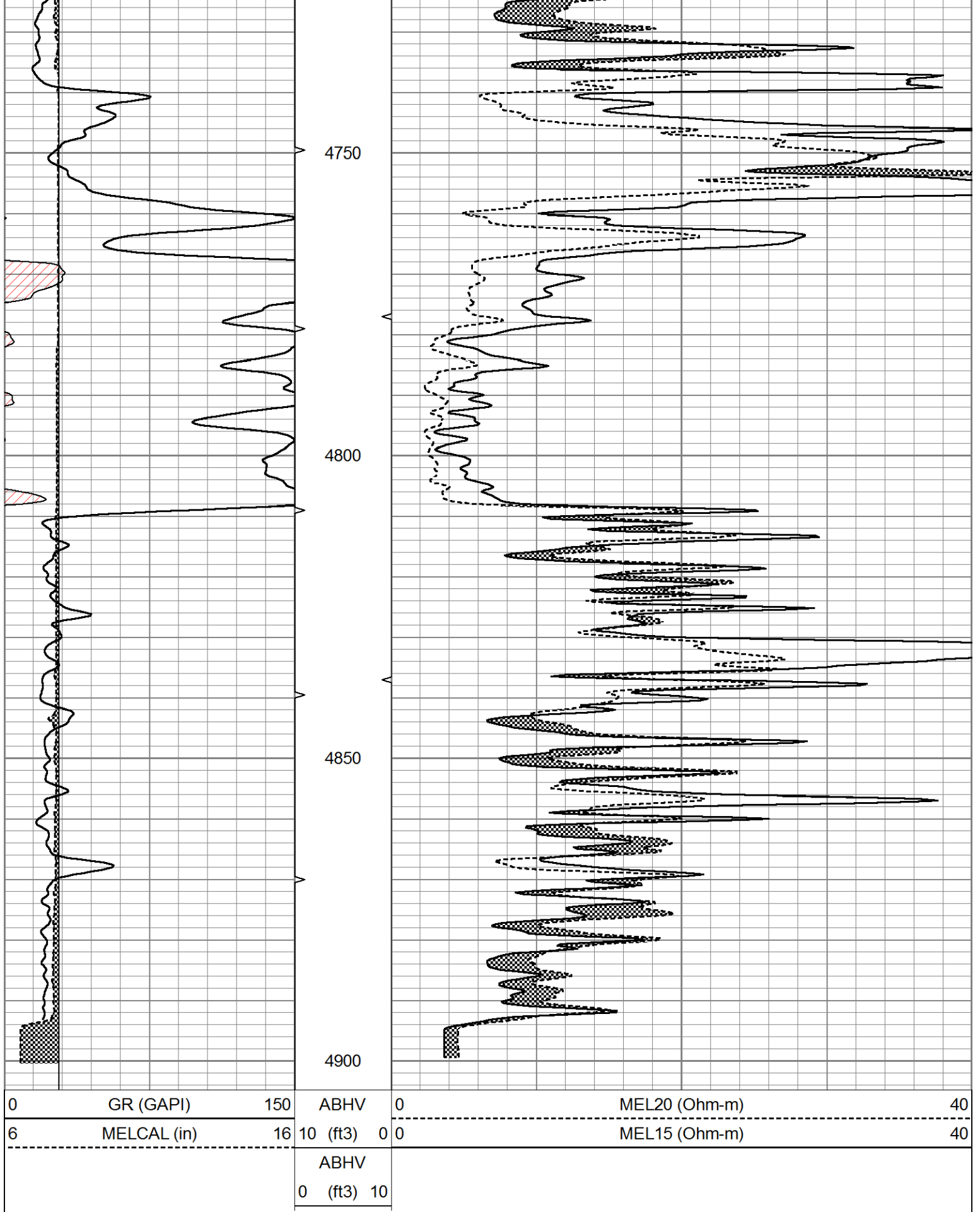


# REPEAT SECTION

Database File 7305pe.db  
 Dataset Pathname pass7.1  
 Presentation Format micro  
 Dataset Creation Sun Jul 16 14:29:42 2023  
 Charted by Depth in Feet scaled 1:240

0	GR (GAPI)	150	ABHV	0	MEL20 (Ohm-m)	40
6	MELCAL (in)	16	10 (ft3)	0 0	MEL15 (Ohm-m)	40
			ABHV			
			0 (ft3)	10		





Calibration Report

Database File 7305pe.db  
 Dataset Pathname pass8.1  
 Dataset Creation Sun Jul 16 15:14:11 2023

MICRO Calibration Report

Serial Number: 070911  
 Tool Model: ProbeN  
 Performed: Sun Jul 16 14:50:22 2023

Caliper Calibration: Gain=4.706      Offset=2.353

	Low Cal	High Cal
References	8.000	16.000
Readings	1.200	2.900

1.5" Calibration: Gain=32.000      Offset=0.000

	Low Cal	High Cal
References	0.000	20.000
Readings	0.001	1.291

2" Calibration: Gain=46.000      Offset=-0.500

	Low Cal	High Cal
References	0.000	20.000
Readings	0.003	1.103

Gamma Ray Calibration Report

Serial Number: 070559  
 Tool Model: OPEN\_GR  
 Performed: Sun May 14 16:49:25 2023

Calibrator Value: 1.0      GAPI

Background Reading: 0.0      cps  
 Calibrator Reading: 1.0      cps

Sensitivity: 0.3000      GAPI/cps