



TRIPLE COMBO LOG

Company NEC OPERATING - KANSAS, LLC.

Well KING OF WHALES #1

Field TROUSDALE NORTH

County EDWARDS State KANSAS

Location: API #: 15-047-21672-0000

1975' FSL & 650' FEL
NW - SE - NE - SE
SEC 8 TWP 26S RGE 16W

Permanent Datum GROUND LEVEL Elevation 2086
Log Measured From KELLY BUSHING 8' A.G.L.
Drilling Measured From KELLY BUSHING

Other Services
CDL/CNL/PE
DIL/MEL

Elevation

K.B. 2094
D.F. 2092
G.L. 2086

Date	7/16/23
Run Number	ONE
Depth Driller	4900
Depth Logger	4896
Bottom Logged Interval	4894
Top Log Interval	3300
Casing Driller	8 5/8"@350'
Casing Logger	350
Bit Size	7 7/8"
Type Fluid in Hole	CHEMICAL MUD
Density / Viscosity	9.2/51
pH / Fluid Loss	9.5/7.2
Source of Sample	FLOWLINE
Rm @ Meas. Temp	.700@92F
Rmf @ Meas. Temp	.525@92F
Rmc @ Meas. Temp	.840@92F
Source of Rmf / Rmc	MEASUREMENT
Rm @ BHT	.519@124F
Time Circulation Stopped	2.5 HOURS
Time Logger on Bottom	12:00 P.M.
Maximum Recorded Temperature	124F
Equipment Number	922339
Location	HAYS, KANSAS
Recorded By	JEFF LUEBBERS
Witnessed By	KEATON JONES

<<< Fold Here >>>

All interpretations are opinions based on inferences from electrical or other measurements and we cannot and do not guarantee the accuracy or correctness of any interpretation, and we shall not, except in the case of gross or willful negligence on our part, be liable or responsible for any loss, costs, damages, or expenses incurred or sustained by anyone resulting from any interpretation made by any of our officers, agents or employees. These interpretations are also subject to our general terms and conditions set out in our current Price Schedule.

15-047-21672-0000

Comments

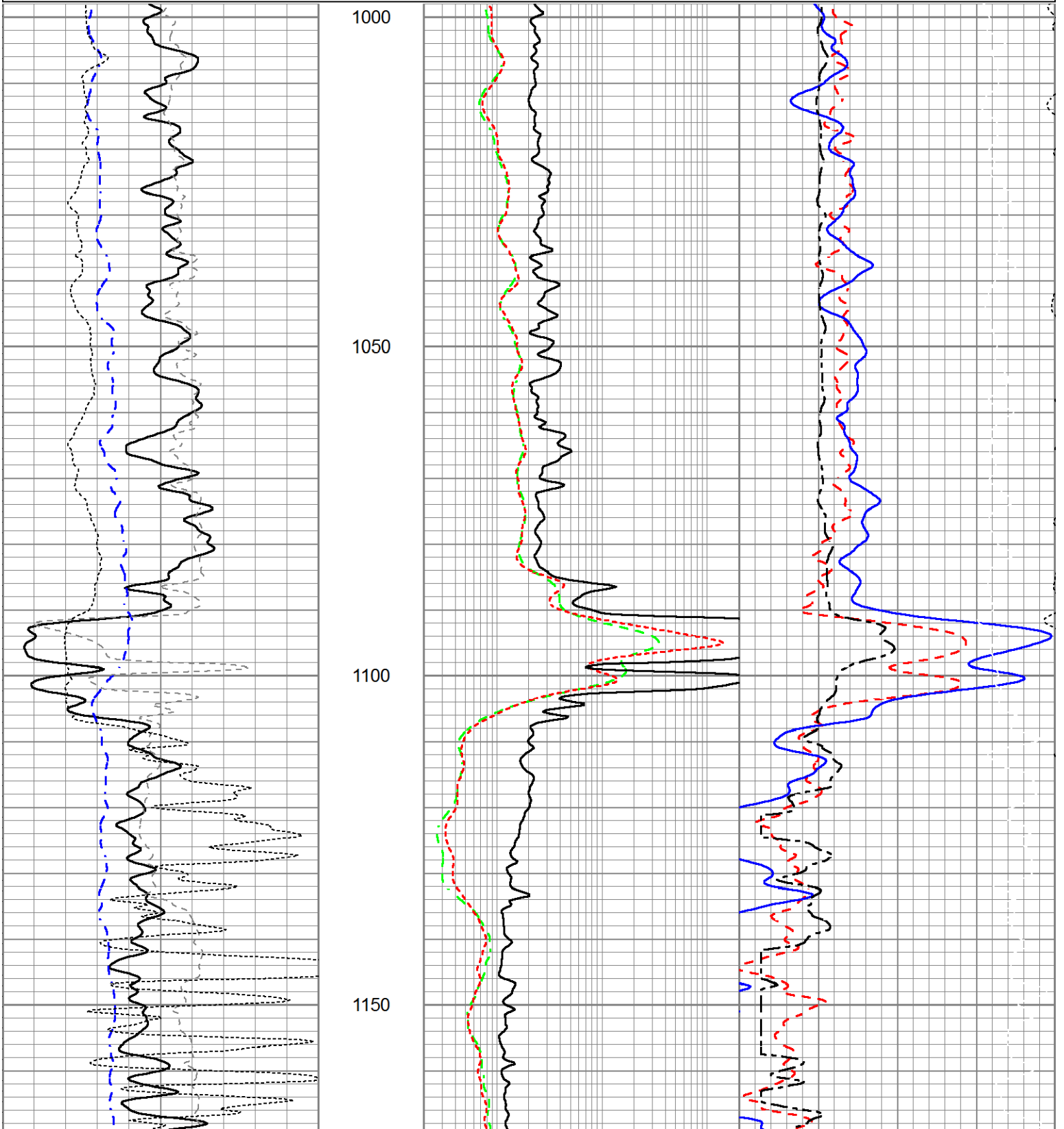
THANK YOU FOR USING ELI WIRELINE HAYS, KANSAS (785) 628-6395
DIRECTIONS
TROUSDALE, KS., 1 1/2 S., W. INTO

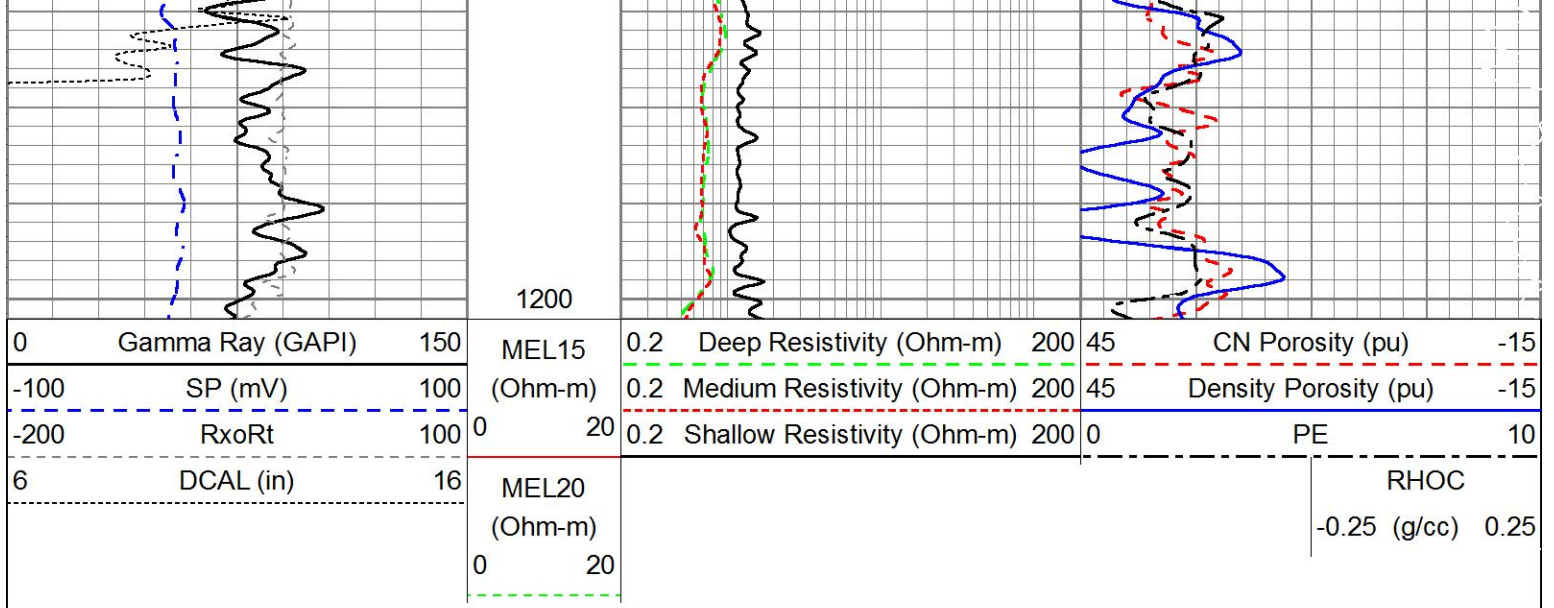


MAIN SECTION

Database File 7305pe.db
 Dataset Pathname pass5.1L
 Presentation Format obrcompnec
 Dataset Creation Sun Jul 16 15:17:45 2023
 Charted by Depth in Feet scaled 1:240

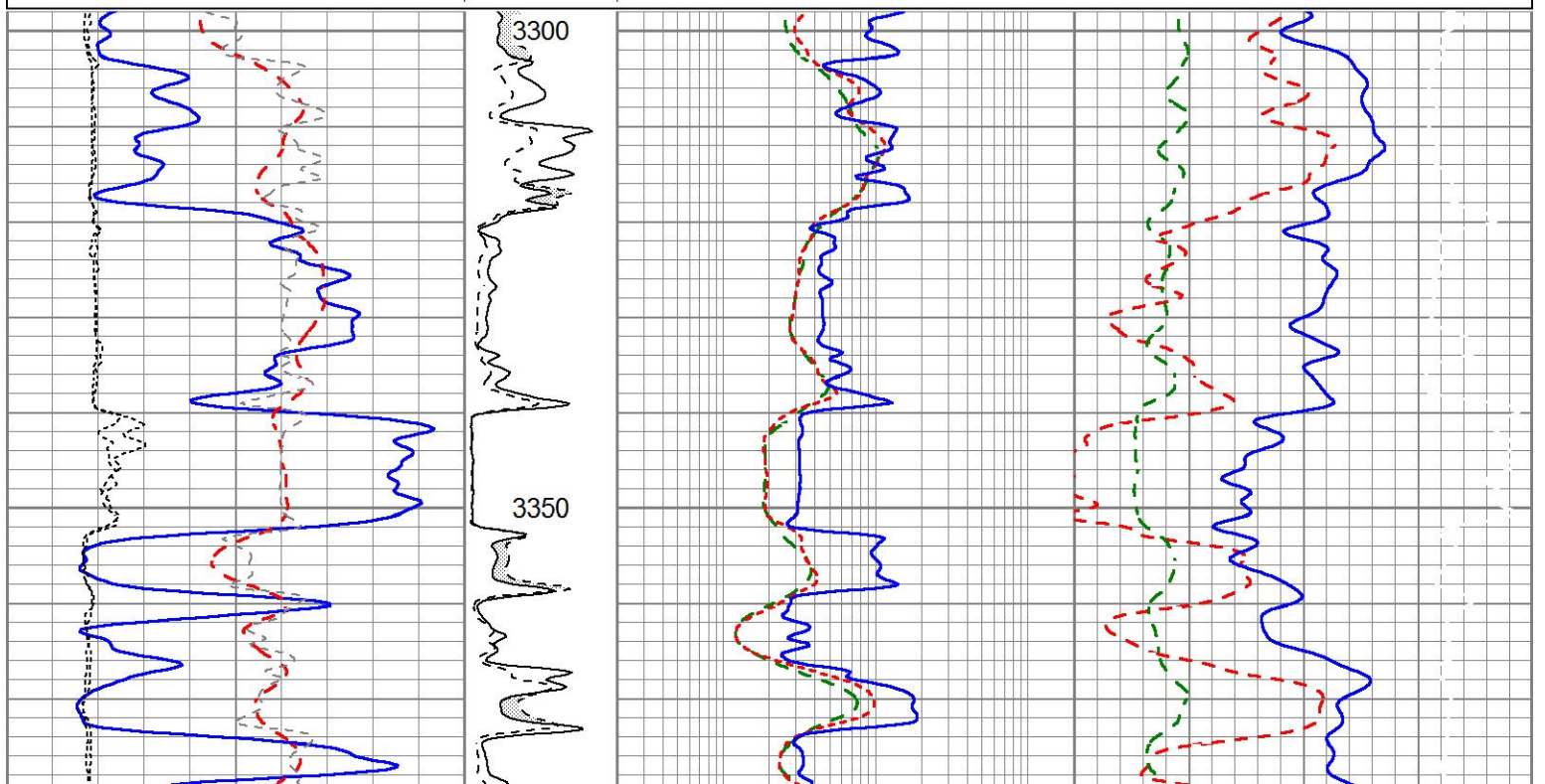
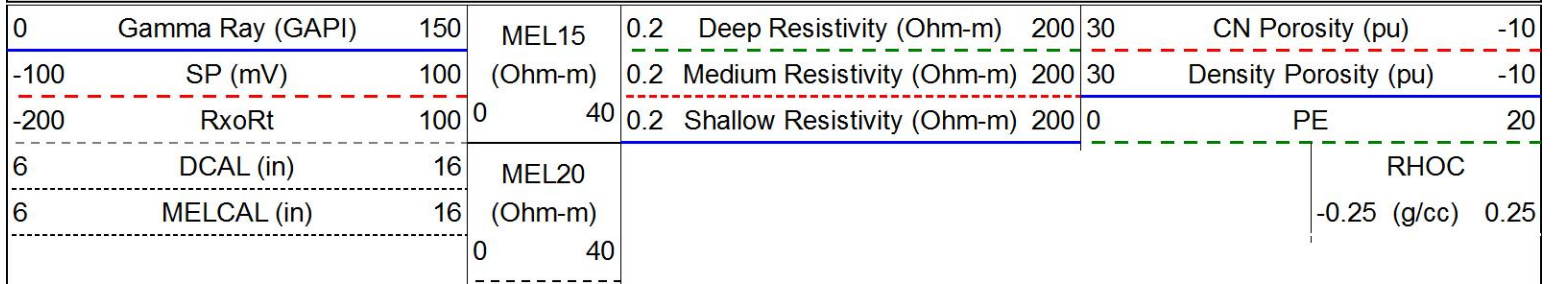
0	Gamma Ray (GAPI)	150	MEL15	0.2	Deep Resistivity (Ohm-m)	200	45	CN Porosity (pu)	-15	
-100	SP (mV)	100	(Ohm-m)	0.2	Medium Resistivity (Ohm-m)	200	45	Density Porosity (pu)	-15	
-200	RxoRt	100	0	20	0.2	Shallow Resistivity (Ohm-m)	200	0	PE	10
6	DCAL (in)	16	MEL20						RHOC	
			(Ohm-m)						-0.25 (g/cc)	0.25
			0	20						

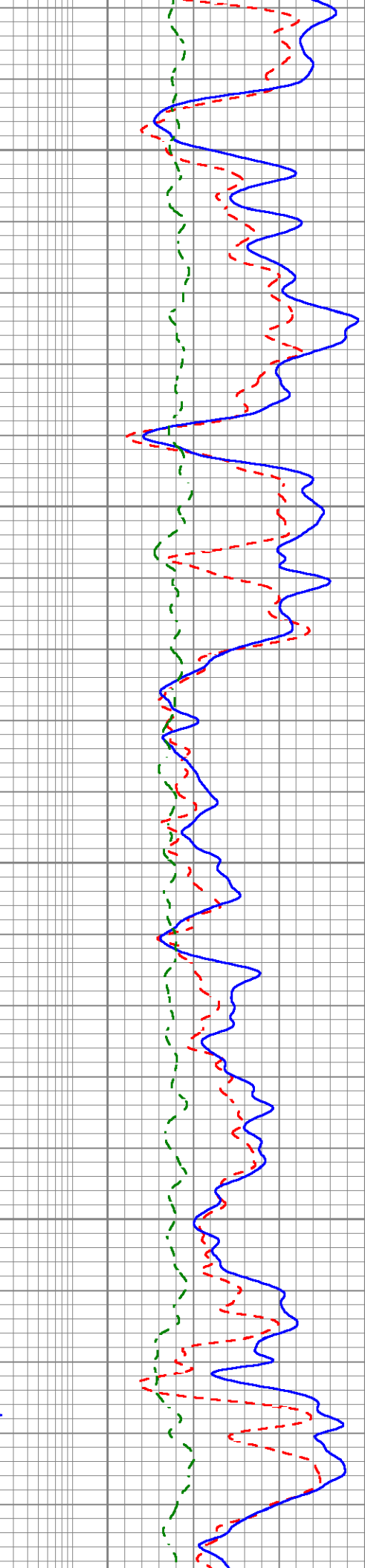
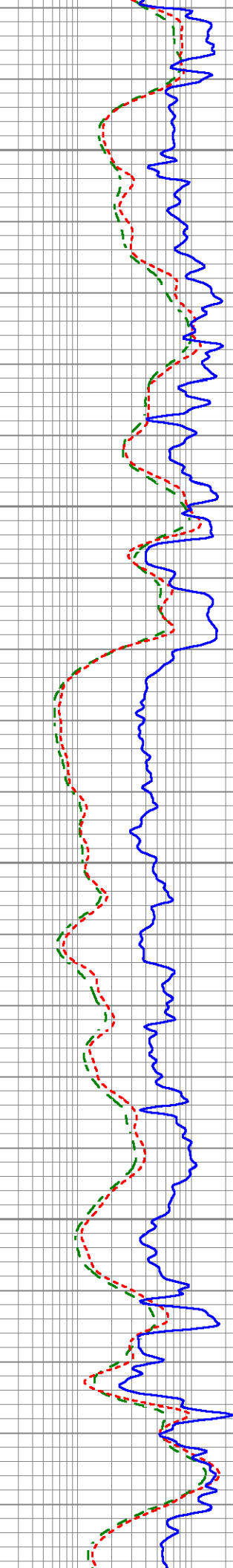
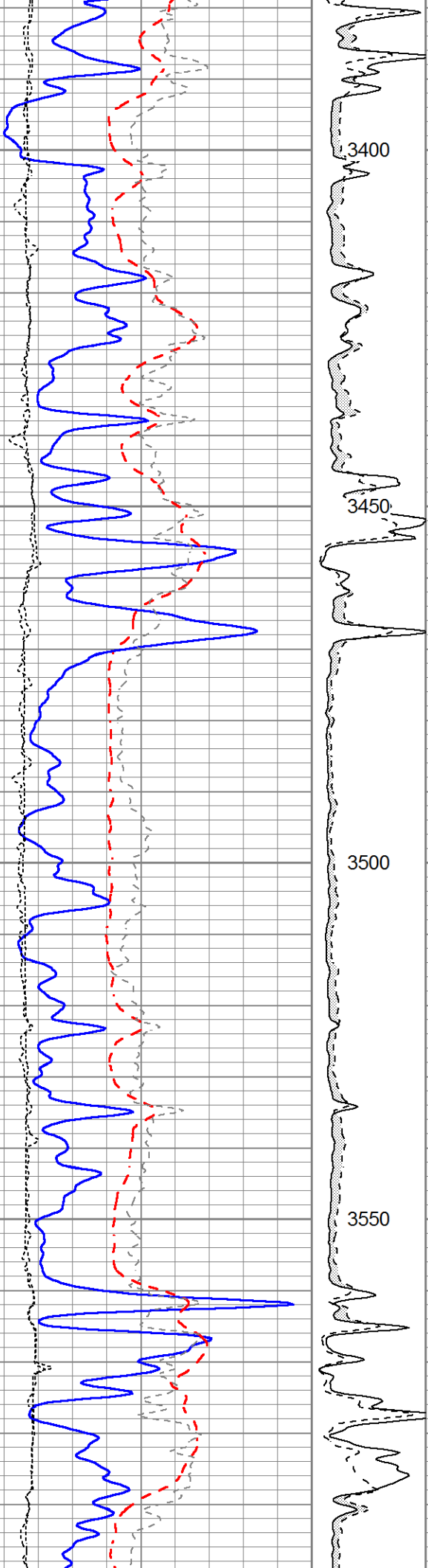


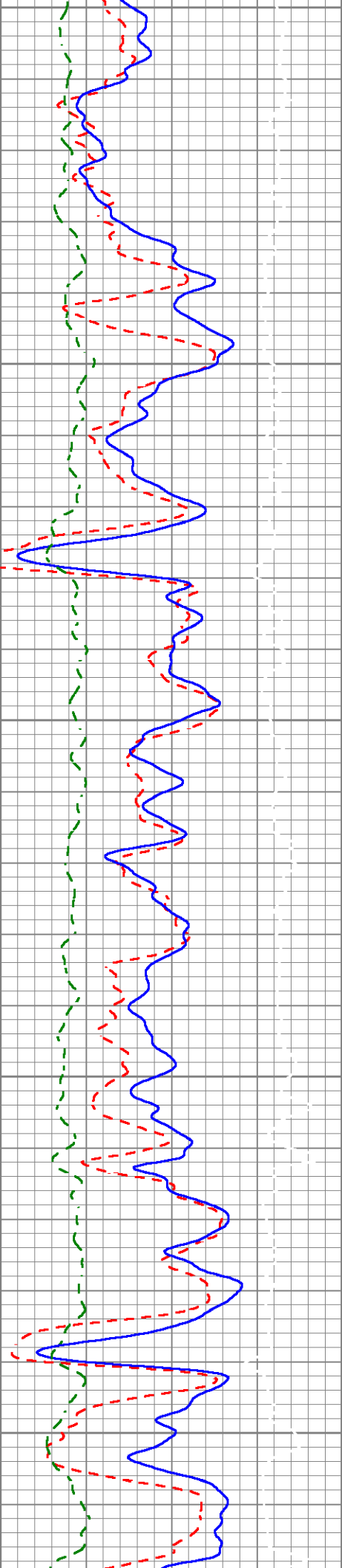
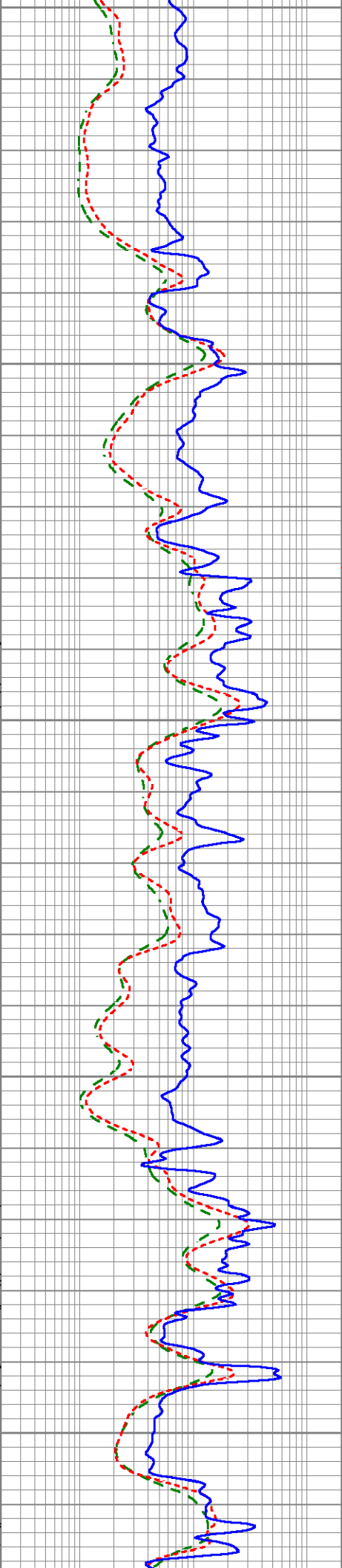
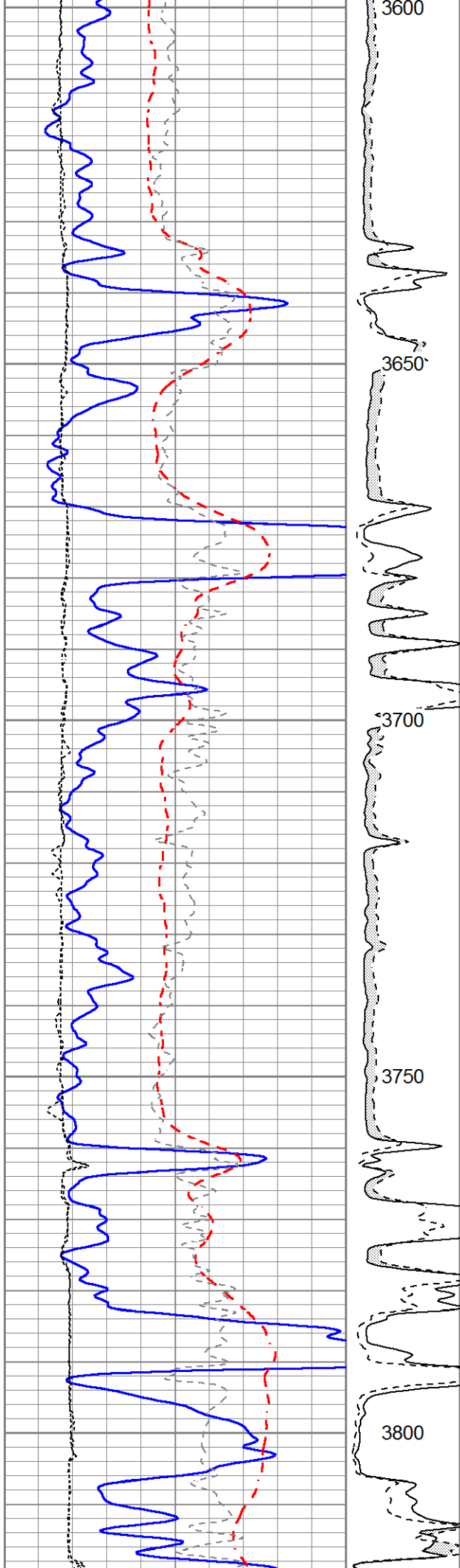


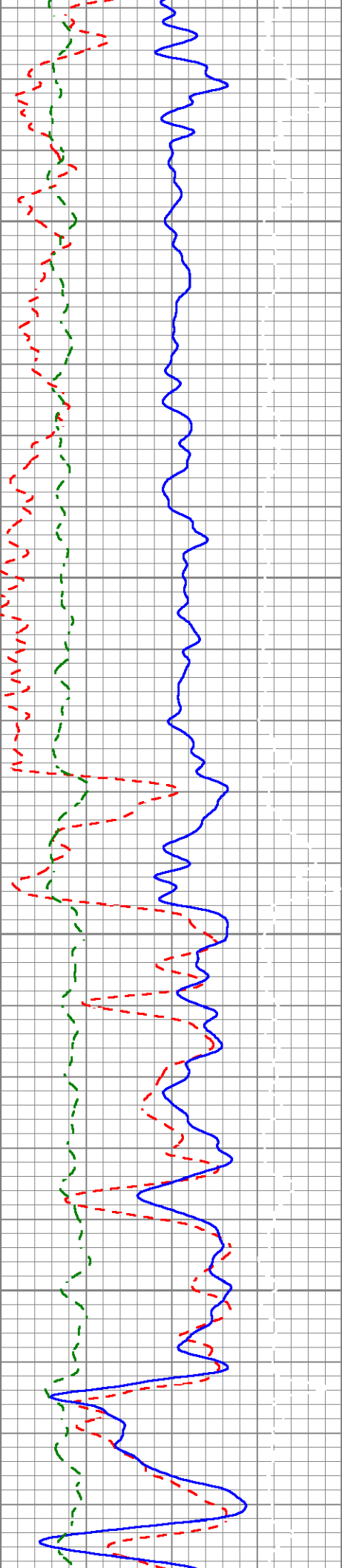
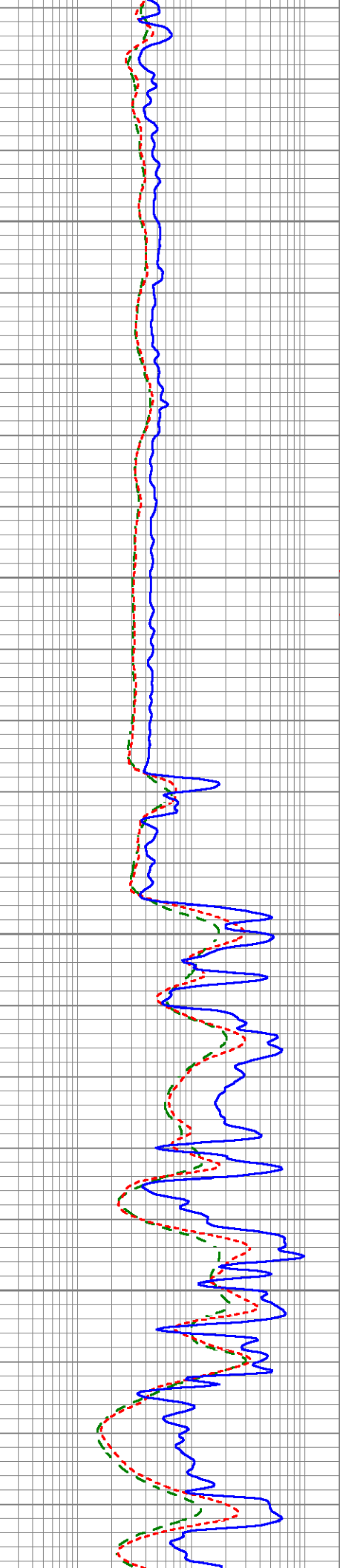
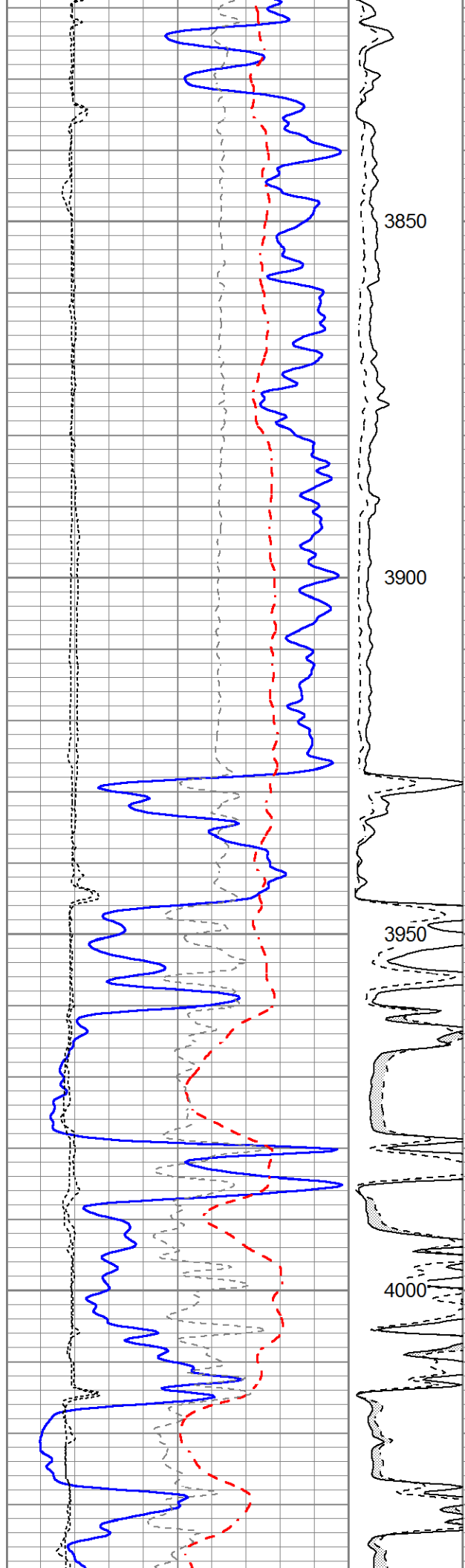
MAIN SECTION

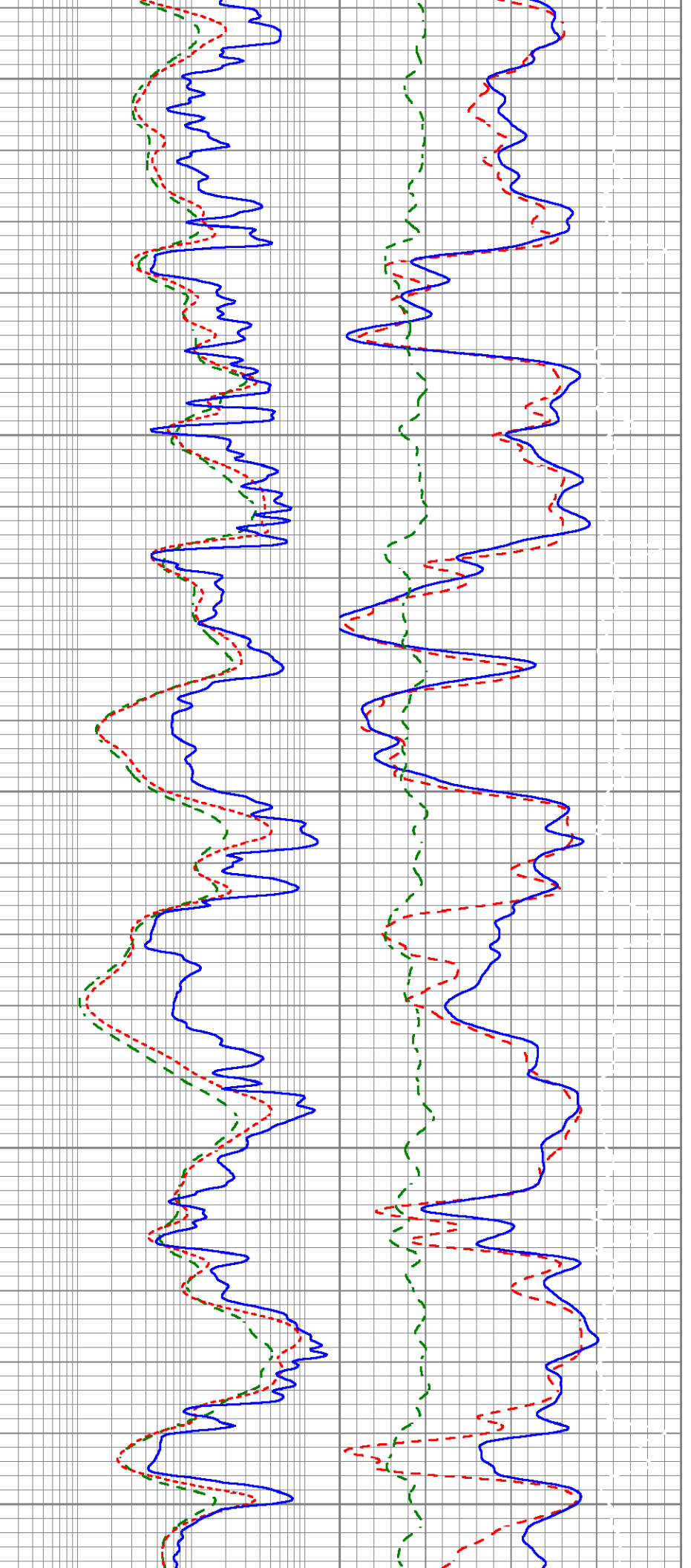
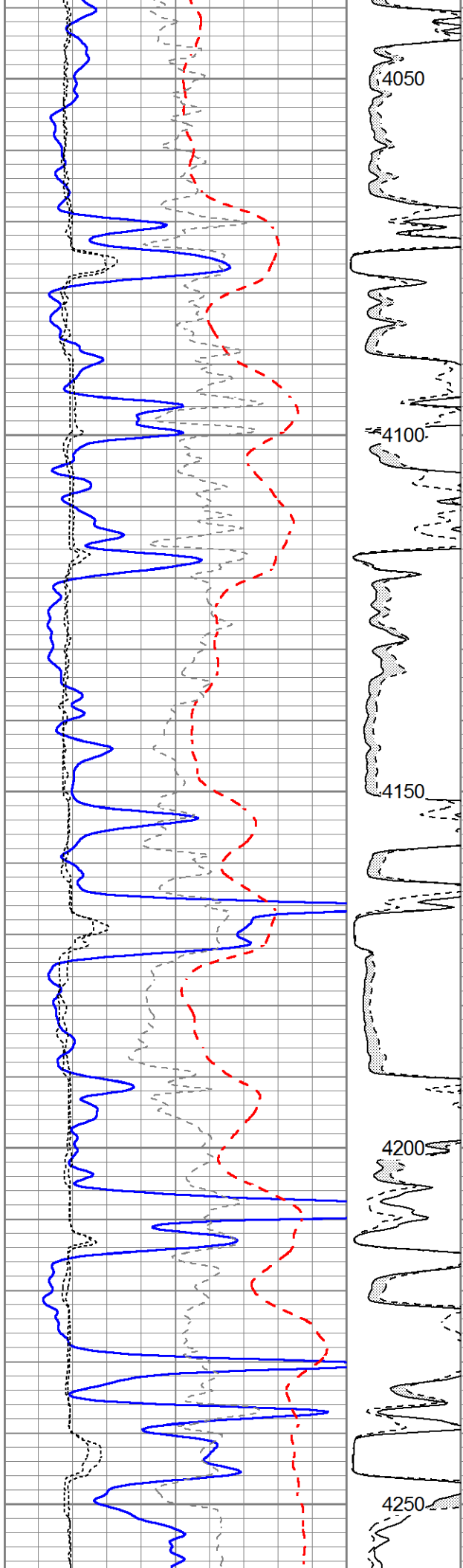
Database File 7305pe.db
 Dataset Pathname pass5.1L
 Presentation Format obrcompcol
 Dataset Creation Sun Jul 16 15:17:45 2023
 Charted by Depth in Feet scaled 1:240

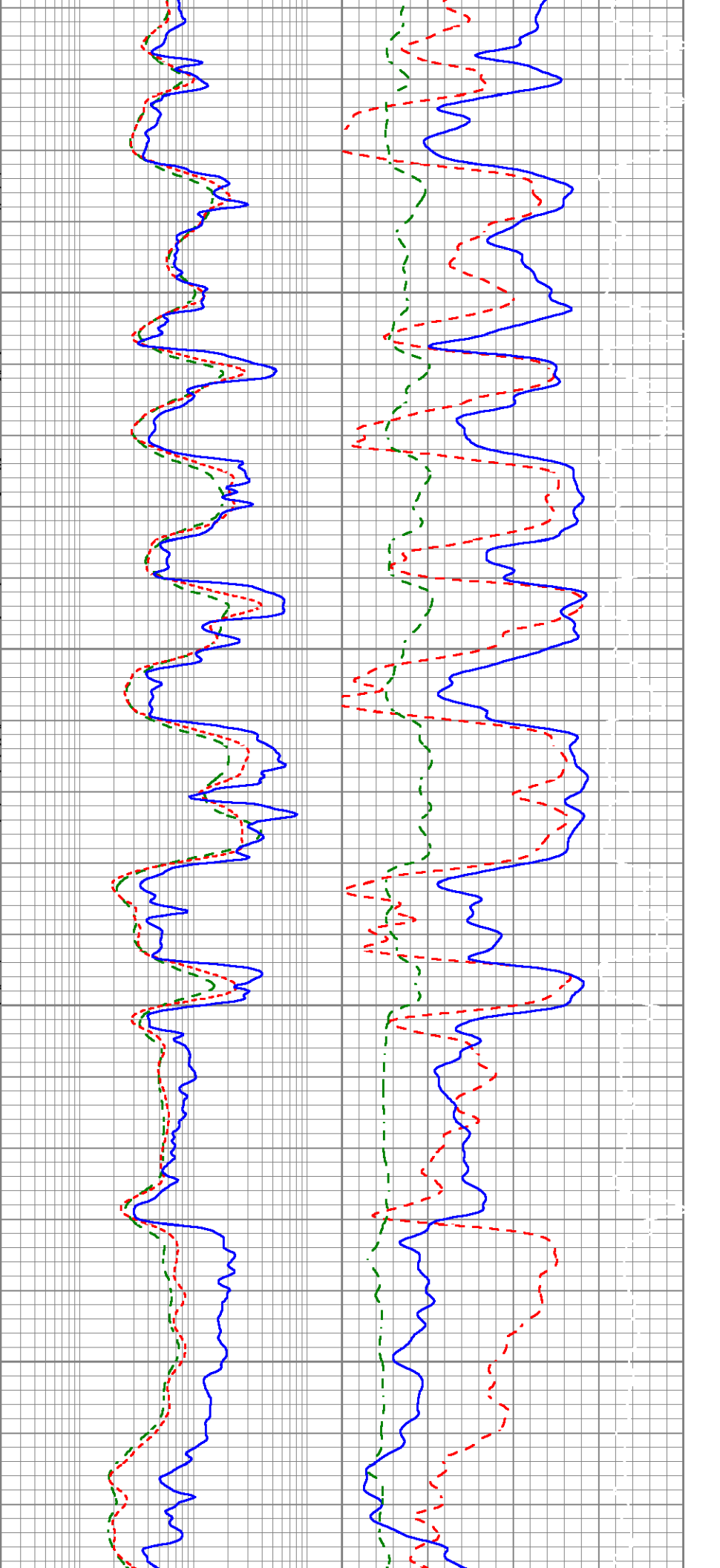
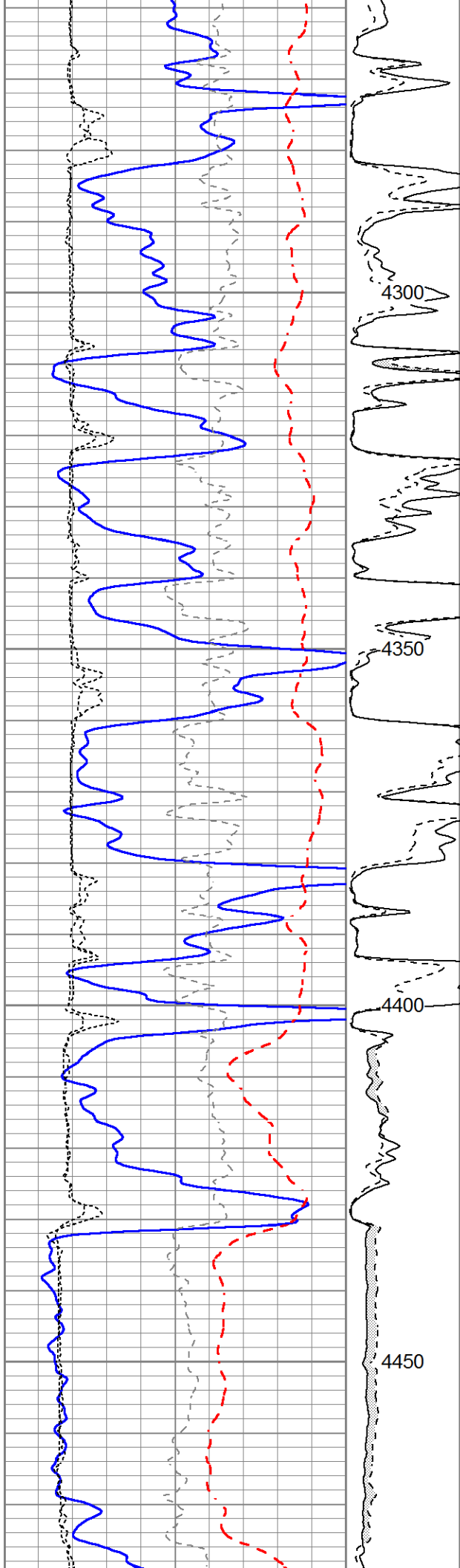


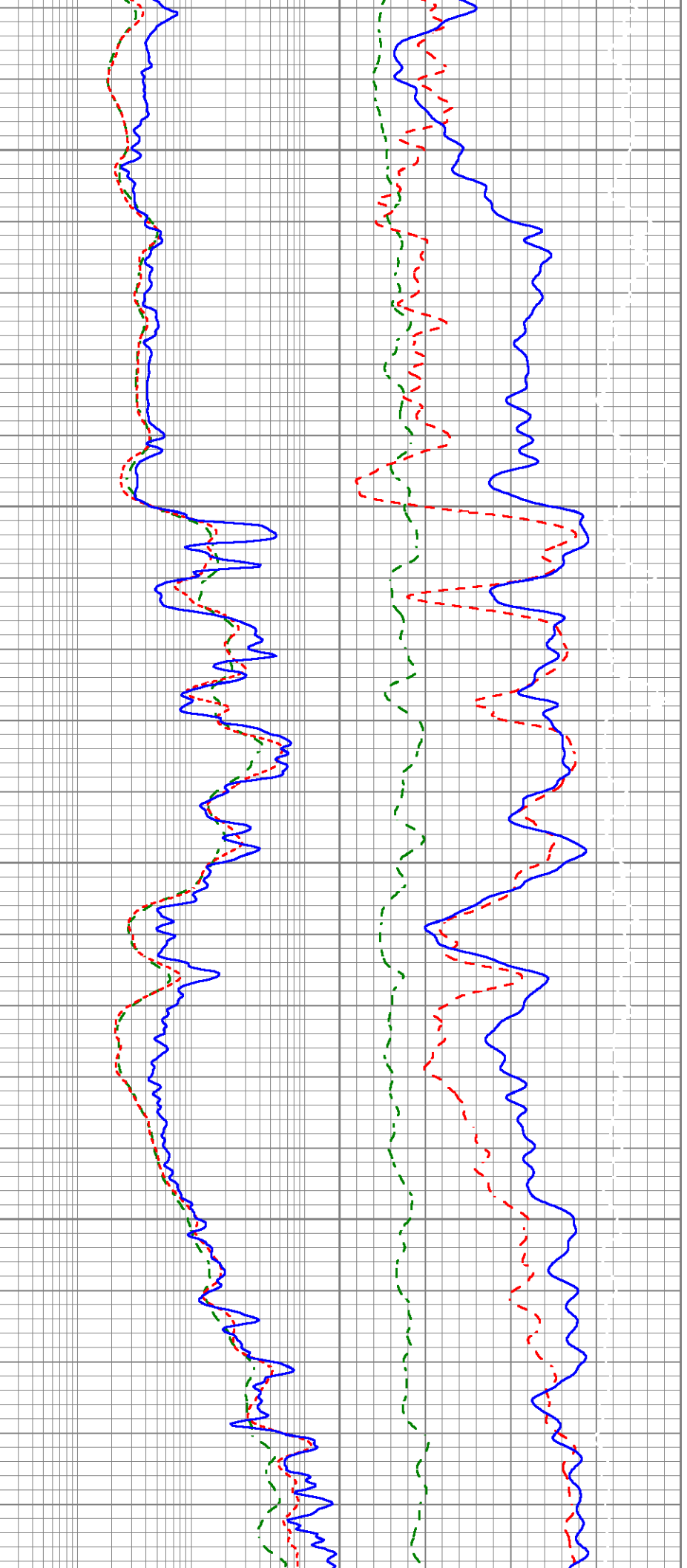
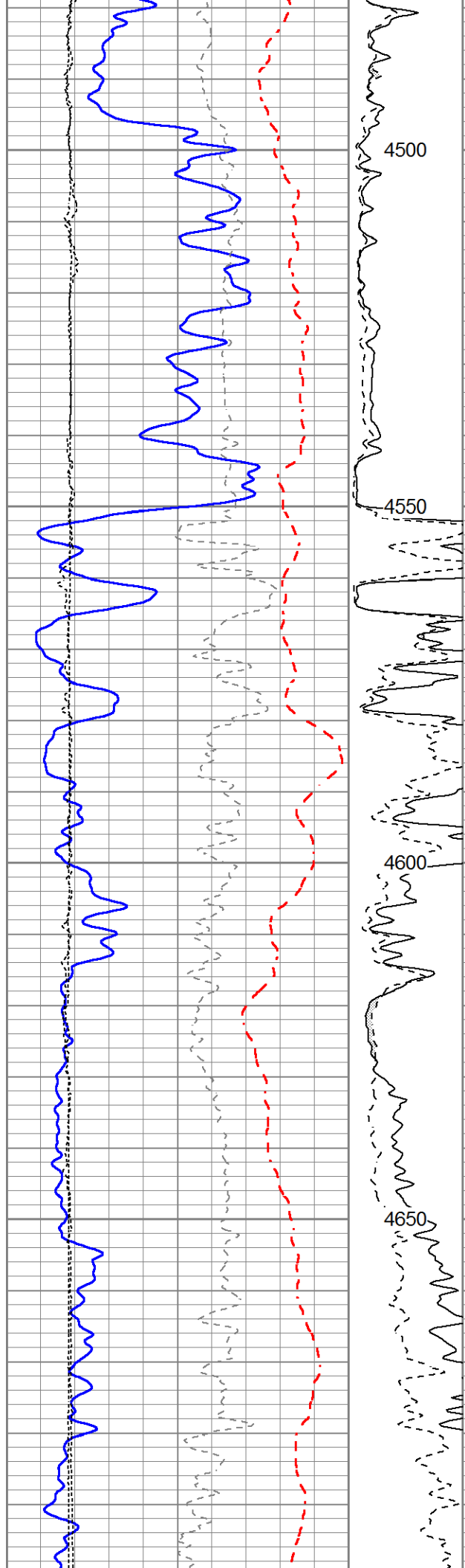


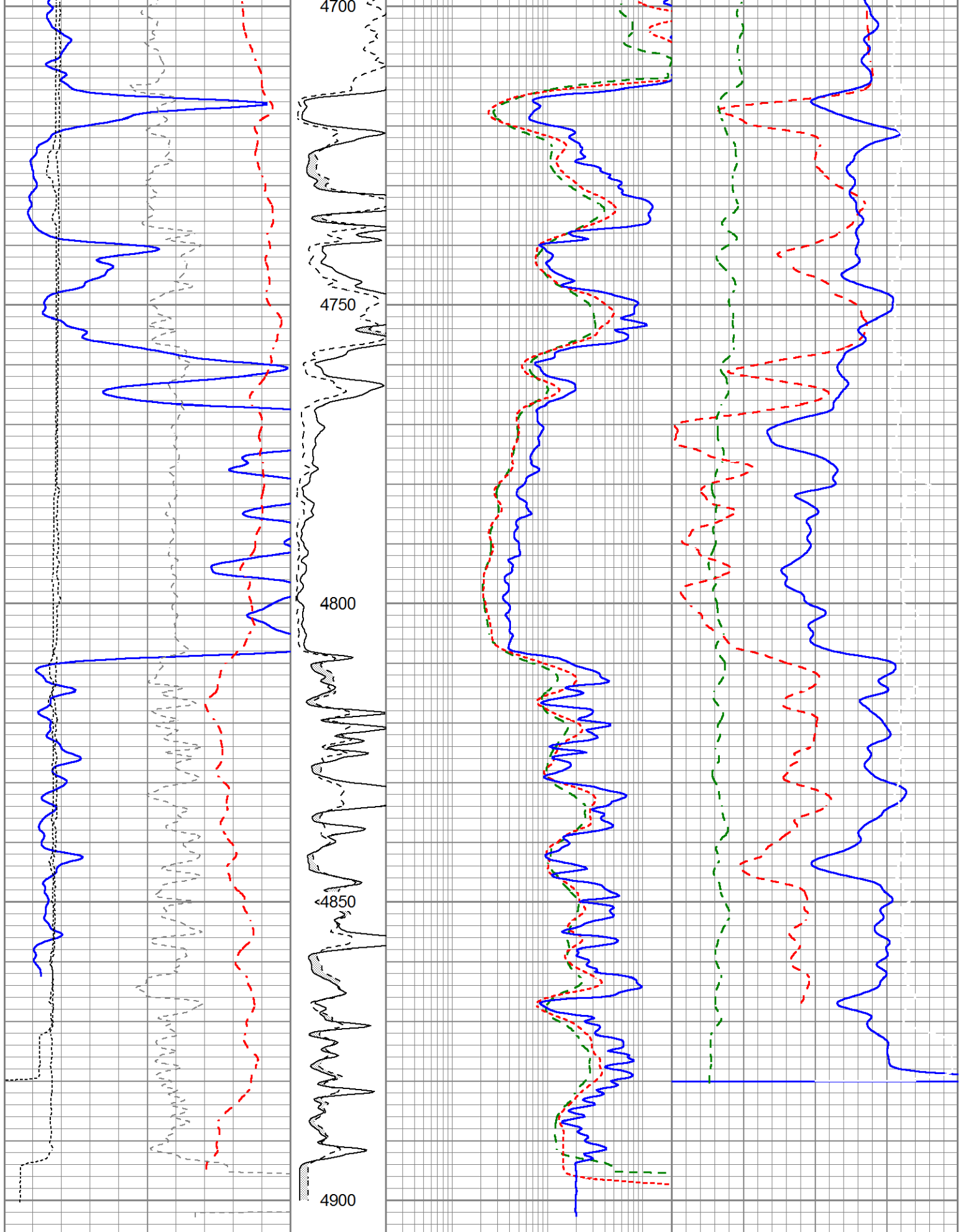












0	Gamma Ray (GAPI)	150	MEL15	0.2	Deep Resistivity (Ohm-m)	200	30	CN Porosity (pu)	-10	
-100	SP (mV)	100	(Ohm-m)	0.2	Medium Resistivity (Ohm-m)	200	30	Density Porosity (pu)	-10	
-200	RxoRt	100	0	40	0.2	Shallow Resistivity (Ohm-m)	200	0	PE	20

6	DCAL (in)	16	MEL20			RHOC
6	MELCAL (in)	16	(Ohm-m)			-0.25 (g/cc) 0.25
			0 40			