



**COMPENSATED  
DENSITY/NEUTRON  
LOG**

Company	MUSTANG ENERGY CORPORATION
Well	LEINMILLER #5
Field	LEINMILLER
County	ELLIS
State	KANSAS

Location:	API # : 15-051-27097-0000	Other Services
Permanent Datum	GROUND LEVEL Elevation	2173
Log Measured From	KELLY BUSHING 8' A.G.L	
Drilling Measured From	KELLY BUSHING	
	SEC 2 TWP 12S RGE 19W	Elevation
		K.B. 2181
		D.F. 2179
		G.L. 2173

Date	10/5/23
Run Number	ONE
Depth Driller	3800
Depth Logger	3800
Bottom Logged Interval	3776
Top Log Interval	3100
Casing Driller	8 5/8" @ 222
Casing Logger	222
Bit Size	7 7/8
Type Fluid in Hole	CHEMICAL MUD
Density / Viscosity	9.0/46
PH / Fluid Loss	9.0/9.6
Source of Sample	FLOWLINE
Rm @ Meas. Temp	.800 @ 73F
Rmt @ Meas. Temp	.600 @ 73F
Rmc @ Meas. Temp	.960 @ 73F
Source of Rmf / Rmc	MEASUREMENT
Rm @ BHT	.512 @ 114F
Time Circulation Stopped	2 HOURS
Time Logger on Bottom	8:00 A.M.
Maximum Recorded Temperature	114F
Equipment Number	8916
Location	HAYS, KANSAS
Recorded By	COLE ROBBEN
Witnessed By	CAMERON BRIN

<<< Fold Here >>>

All interpretations are opinions based on inferences from electrical or other measurements and we cannot and do not guarantee the accuracy or correctness of any interpretation, and we shall not, except in the case of gross or willful negligence on our part, be liable or responsible for any loss, costs, damages, or expenses incurred or sustained by anyone resulting from any interpretation made by any of our officers, agents or employees. These interpretations are also subject to our general terms and conditions set out in our current Price Schedule.

**Comments**

THANK YOU FOR USING ELI WIRELINE SERVICES, HAYS, KS. ( 785 ) 628-6395

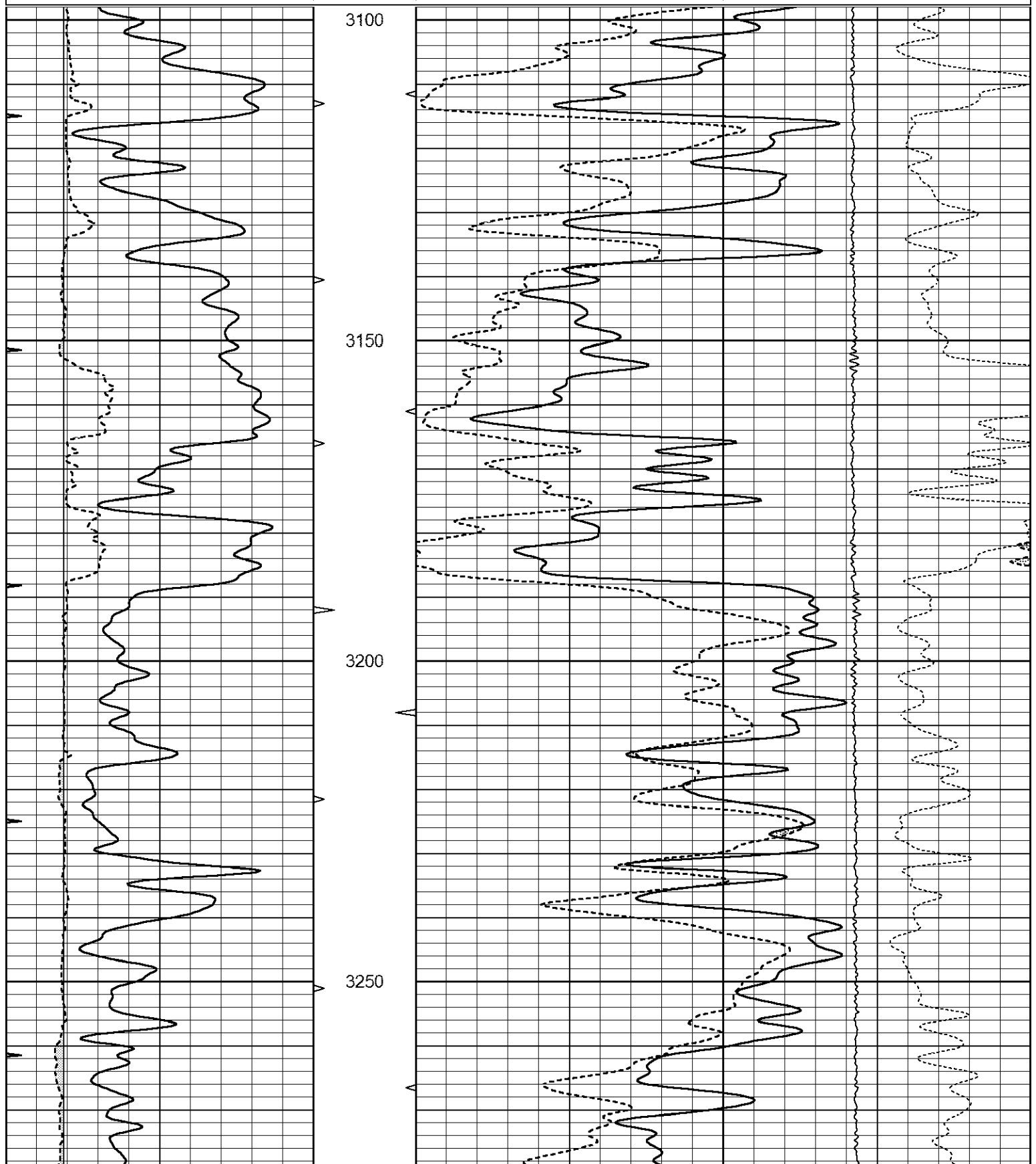
DIRECTIONS:  
FROM YOCEMENTO EXIT ON I70 GO NORTH 8 MILES TO HOMESTEAD ROAD, EAST 1 1/4 MILES,  
SOUTH INTO

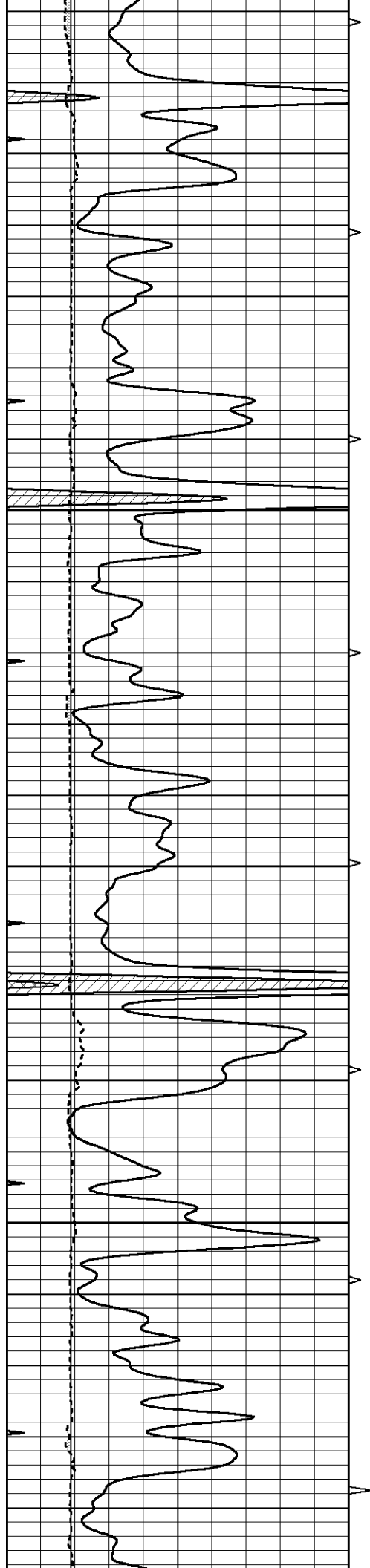


**MAIN SECTION**

Database File 8358ddn.db  
 Dataset Pathname pass4D  
 Presentation Format \_den\_neu  
 Dataset Creation Thu Oct 05 08:53:42 2023  
 Charted by Depth in Feet scaled 1:240

0	GAMMA RAY (GAPI)	150	AVTX	30	COMPENSATED DENSITY (pu)	-10
0	MINMK	20	10 (ft3) 0	30	COMPENSATED NEUTRON (pu)	-10
6	CALIPER (in)	16	BVTX		-0.25 CORRECTION (g/cc)	0.25
			0 (ft3) 10		0 LTEN (lb)	5000



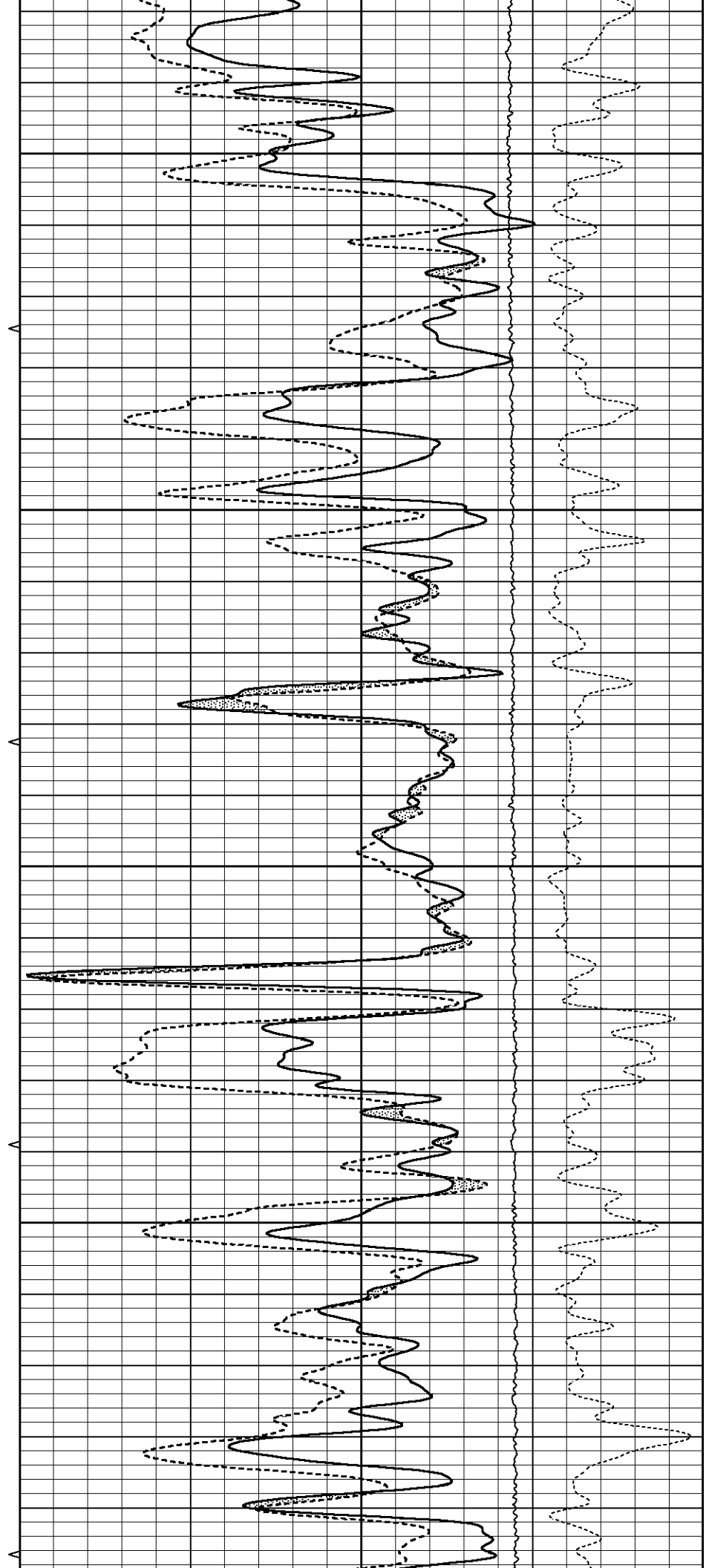


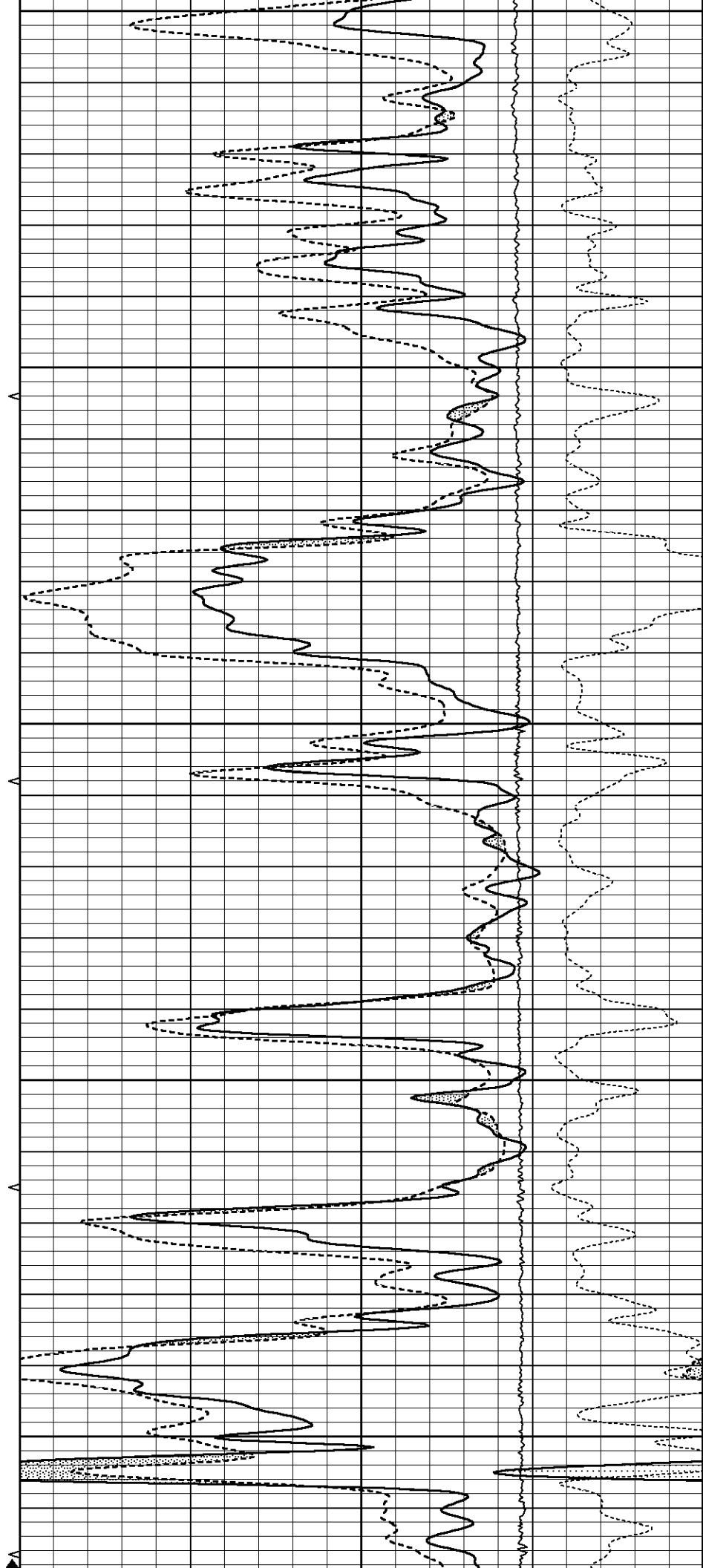
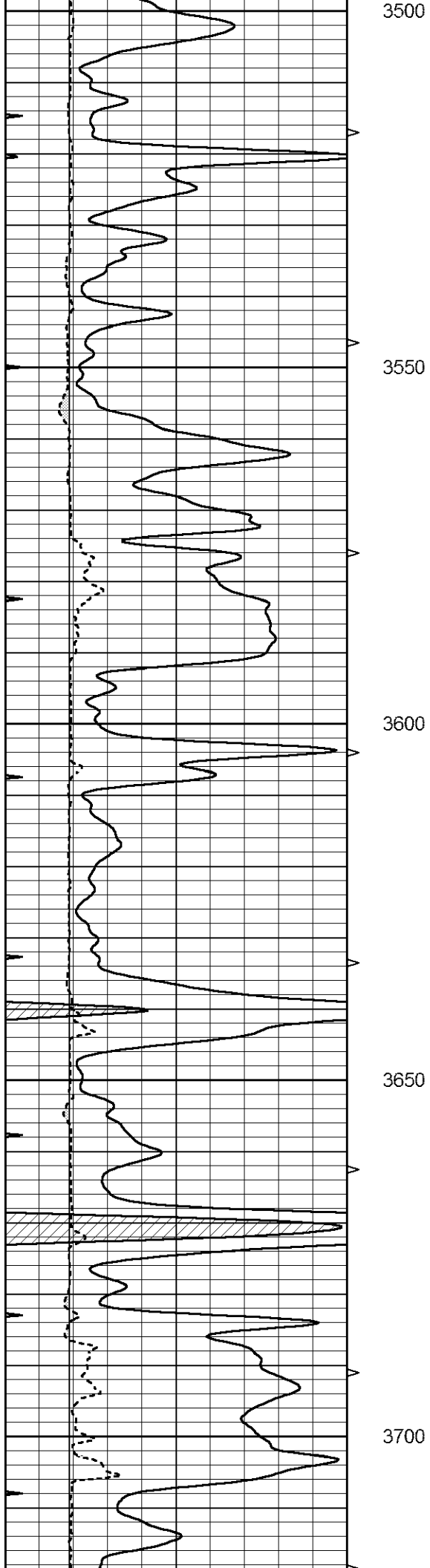
3300

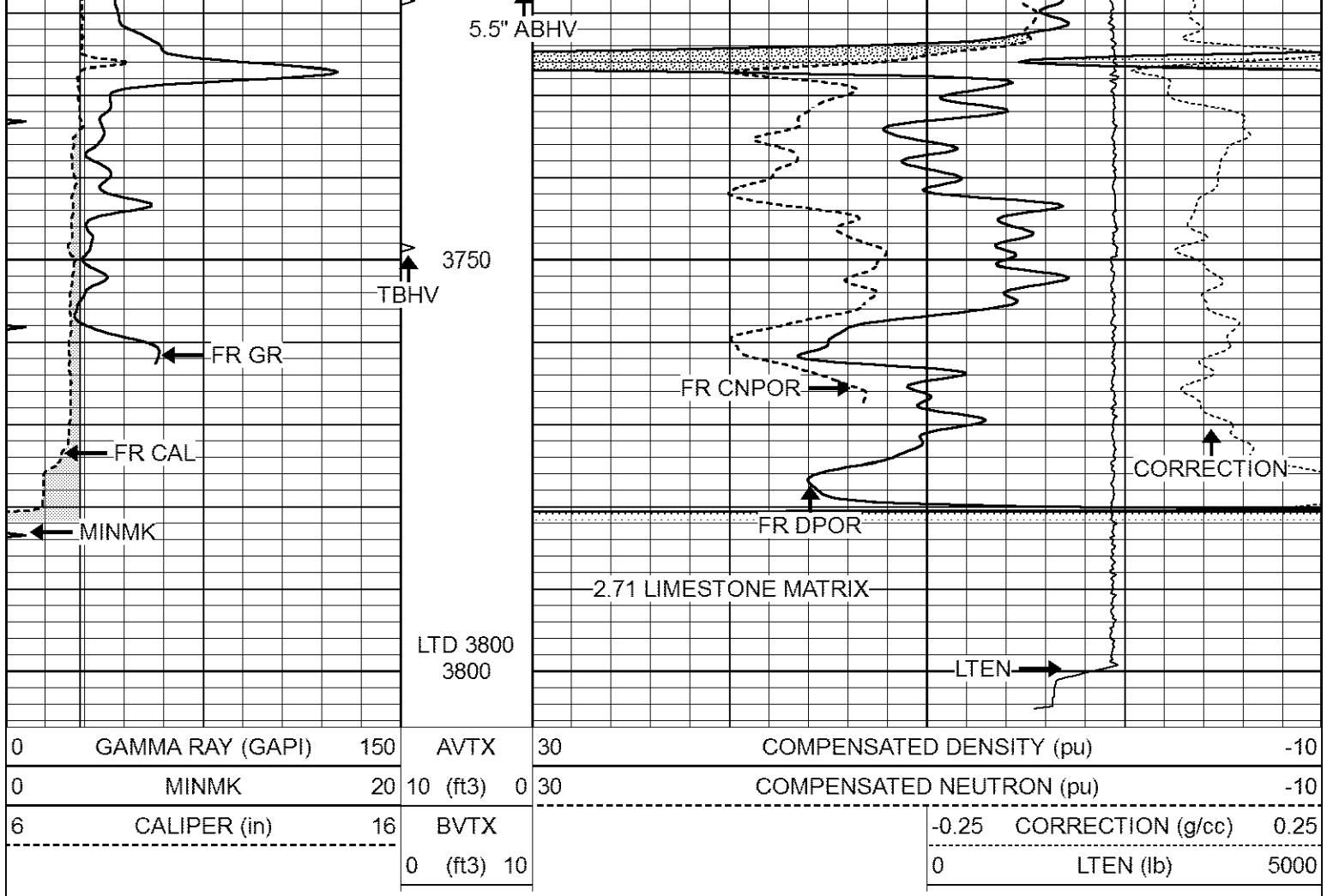
3350

3400

3450



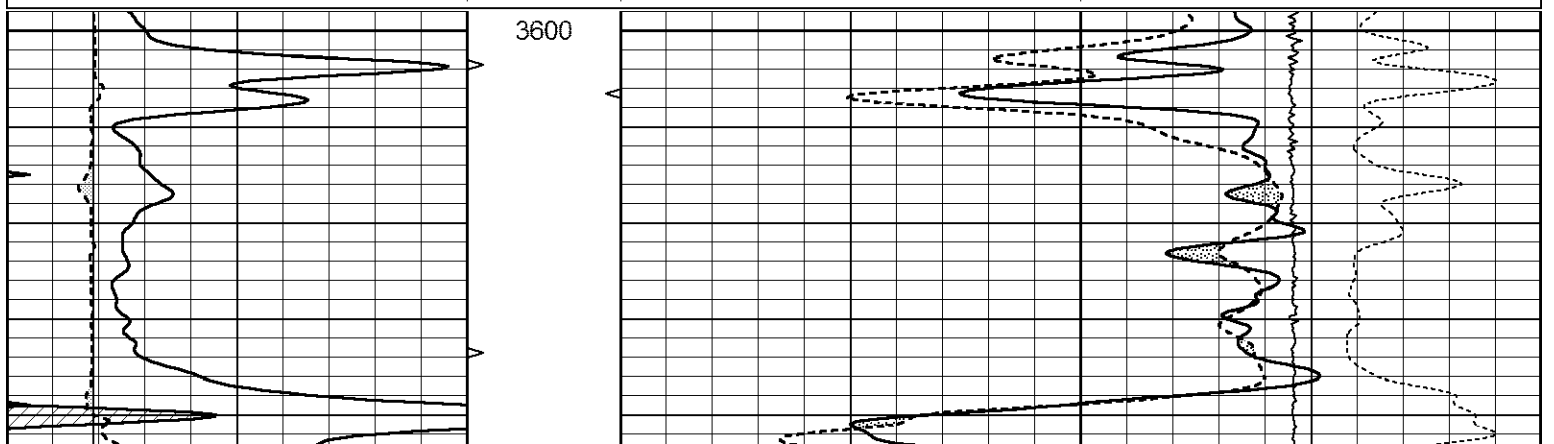


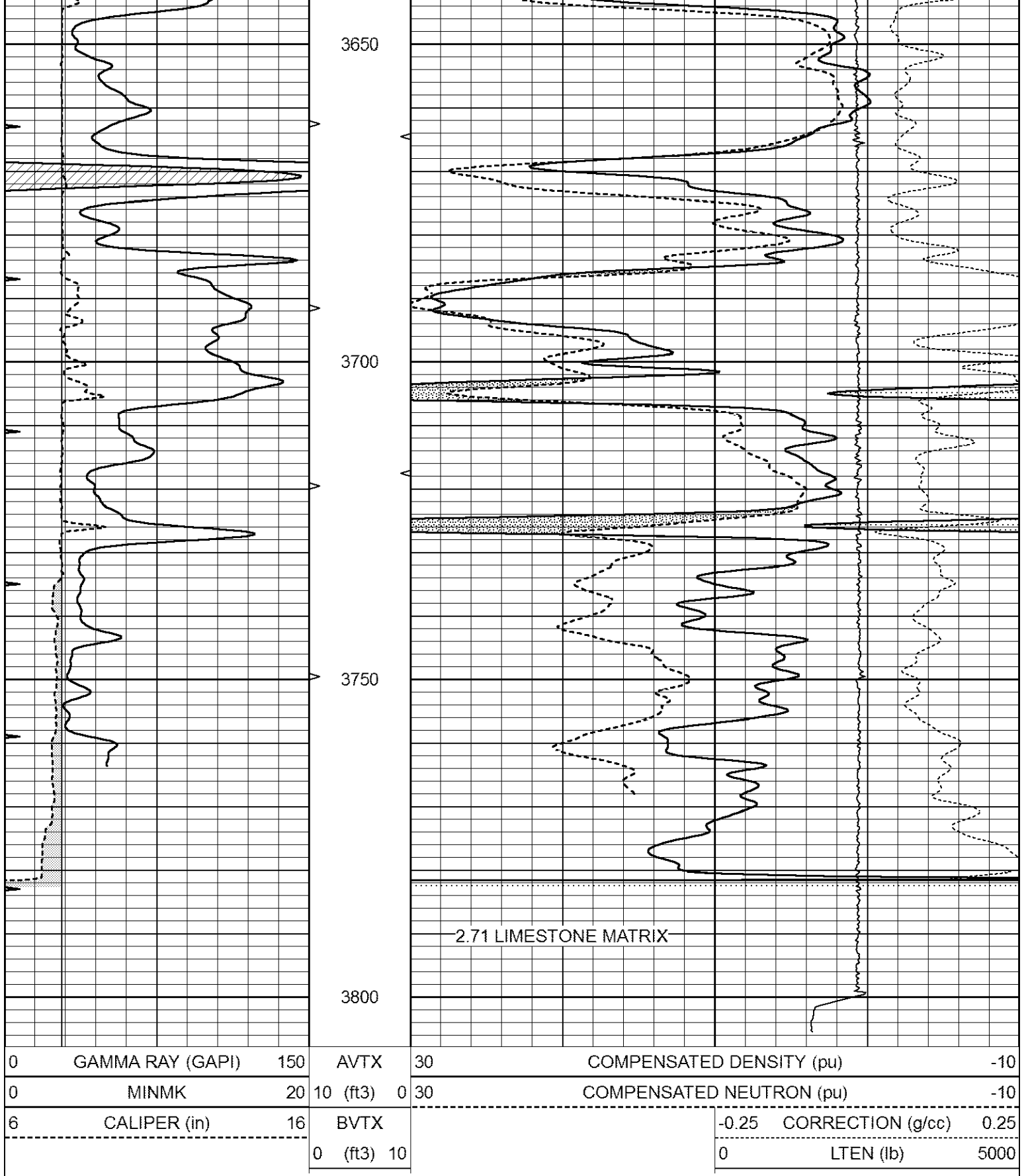


# LIMESTONE MATRIX REPEAT

Database File 8358ddn.db  
 Dataset Pathname pass3LSR  
 Presentation Format \_den\_neu  
 Dataset Creation Thu Oct 05 08:43:11 2023  
 Charted by Depth in Feet scaled 1:240

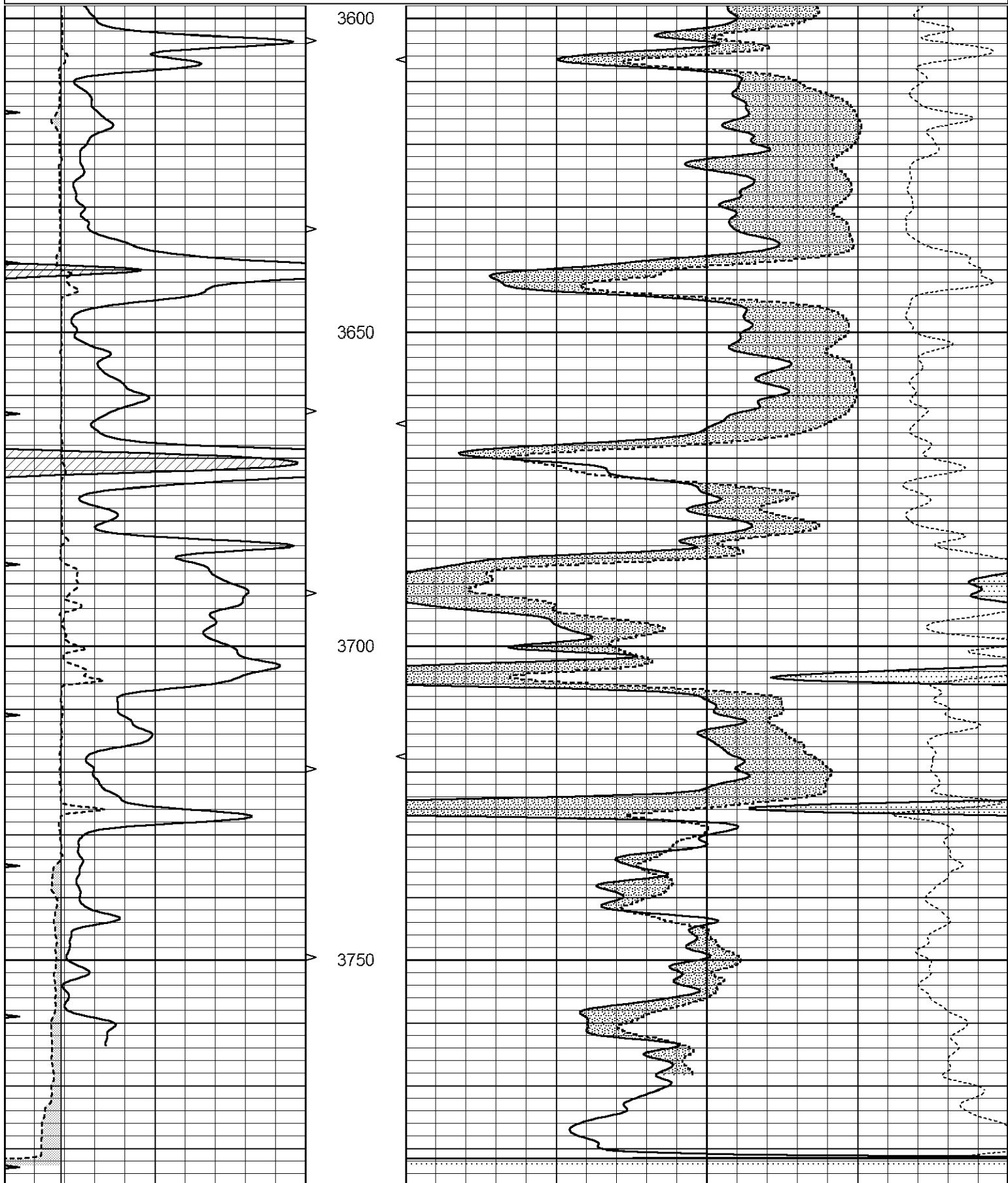
0	GAMMA RAY (GAPI)	150	AVTX	30	COMPENSATED DENSITY (pu)	-10
0	MINMK	20	10 (ft3) 0	30	COMPENSATED NEUTRON (pu)	-10
6	CALIPER (in)	16	BVTX		-0.25 CORRECTION (g/cc)	0.25
			0 (ft3) 10		0 LTEN (lb)	5000





# DOLOMITE MATRIX REPEAT

0	GAMMA RAY (GAPI)	150	ABHV	30	COMPENSATED DENSITY (pu)	-10
6	CALIPER (in)	16	10 (ft3)	0 30	COMPENSATED NEUTRON (pu)	-10
0	MINMK	20	TBHV		-0.25 CORRECTION (g/cc)	0.25
			0 (ft3)	10		





Window 1	1512.3	7465.7	2749.0	2519.6	cps
Window 2	1398.8	6705.7	2507.3	2313.8	cps
Window 3	1289.2	5259.5	2124.1	2009.6	cps
Window 4	351.1	351.6	351.8	353.2	cps
Long Space	0.0	5306.9	1108.5	915.0	cps
Short Space	3.3	2239.9	1441.2	1212.0	cps
Rho		1.7100	2.5900	0.0000	g/cc
Pe		2.0000	2.7500	5.7900	

Rib Angle : 44.3 Rib Slope : 0.975 Density/Spine Ratio : 0.541  
 Spine Angle : 74.3 Spine Slope : 3.551 Spine Intercept : -18.8

Before Survey Verification

Performed Wed Dec 31 18:00:00 1969

Window 1	0.0	0.0	0.0	0.0	cps
Window 2	0.0	0.0	0.0	0.0	cps
Window 3	0.0	0.0	0.0	0.0	cps
Window 4	0.0	0.0	0.0	0.0	cps
Long Space	0.0	0.0	0.0	0.0	cps
Short Space	0.0	0.0	0.0	0.0	cps
Measured Rho		0.0000	0.0000	0.0000	g/cc
Measured Correction		0.0000	0.0000	0.0000	g/cc
Measured Pe			0.0000	0.0000	

After Survey Verification

Performed Wed Dec 31 18:00:00 1969

Window 1	0.0	0.0	0.0	0.0	cps
Window 2	0.0	0.0	0.0	0.0	cps
Window 3	0.0	0.0	0.0	0.0	cps
Window 4	0.0	0.0	0.0	0.0	cps
Long Space	0.0	0.0	0.0	0.0	cps
Short Space	0.0	0.0	0.0	0.0	cps
Measured Rho		0.0000	0.0000	0.0000	g/cc
Measured Correction		0.0000	0.0000	0.0000	g/cc
Measured Pe			0.0000	0.0000	

Compensated Neutron Calibration Report

Serial Number: 080621PMC  
 Tool Model: NABORS

PRE-SURVEY VERIFICATION

Detector	Readings	Measured	Target
Short Space	cps		
Long Space	cps	pu	pu

POST-SURVEY VERIFICATION

Detector	Readings	Measured	Target
Short Space	cps		
Long Space	cps	pu	pu

Gamma Ray Calibration Report

Serial Number: 46001  
 Tool Model: Probe1  
 Performed: Thu Apr 20 09:55:57 2023

Calibrator Value:	1.0	GAPI
Background Reading:	0.0	cps
Calibrator Reading:	1.0	cps
Sensitivity:	0.4300	GAPI/cps