



# DUAL INDUCTION LOG

Company MUSTANG ENERGY CORPORATION  
 Well LEINMILLER #5  
 Field LEINMILLER  
 County ELLIS  
 State KANSAS

Company MUSTANG ENERGY CORPORATION  
 Well LEINMILLER #5  
 Field LEINMILLER  
 County ELLIS State KANSAS

Location: API #: 15-051-27097-0000  
 1365' FNL & 1285' FWL  
 NE - NE - SW - NW  
 SEC 2 TWP 12S RGE 19W  
 Permanent Datum GROUND LEVEL Elevation 2173  
 Log Measured From KELLY BUSHING 8' A.G.L  
 Drilling Measured From KELLY BUSHING  
 Other Services  
 CDL/CNL  
 MEL  
 Elevation  
 K.B. 2181  
 D.F. 2179  
 G.L. 2173

Date	10/5/23
Run Number	ONE
Depth Driller	3800
Depth Logger	3800
Bottom Logged Interval	3798
Top Log Interval	00
Casing Driller	8 5/8" @ 222
Casing Logger	222
Bit Size	7 7/8
Type Fluid in Hole	CHEMICAL MUD
Density / Viscosity	9.0/46
PH / Fluid Loss	9.0/9.6
Source of Sample	FLOWLINE
Rm @ Meas. Temp	.800 @ 73F
Rmt @ Meas. Temp	.600 @ 73F
Rmc @ Meas. Temp	.960 @ 73F
Source of Rmf / Rmc	MEASUREMENT
Rm @ BHT	.512 @ 114F
Time Circulation Stopped	2 HOURS
Time Logger on Bottom	8:00 A.M.
Maximum Recorded Temperature	114F
Equipment Number	8916
Location	HAYS, KANSAS
Recorded By	COLE ROBBEN
Witnessed By	CAMERON BRIN

<<< Fold Here >>>

All interpretations are opinions based on inferences from electrical or other measurements and we cannot and do not guarantee the accuracy or correctness of any interpretation, and we shall not, except in the case of gross or willful negligence on our part, be liable or responsible for any loss, costs, damages, or expenses incurred or sustained by anyone resulting from any interpretation made by any of our officers, agents or employees. These interpretations are also subject to our general terms and conditions set out in our current Price Schedule.

### Comments

THANK YOU FOR USING ELI WIRELINE SERVICES, HAYS, KS. ( 785 ) 628-6395

DIRECTIONS:  
 FROM YOCEMENTO EXIT ON I70 GO NORTH 8 MILES TO HOMESTEAD ROAD, EAST 1 1/4 MILES,  
 SOUTH INTO

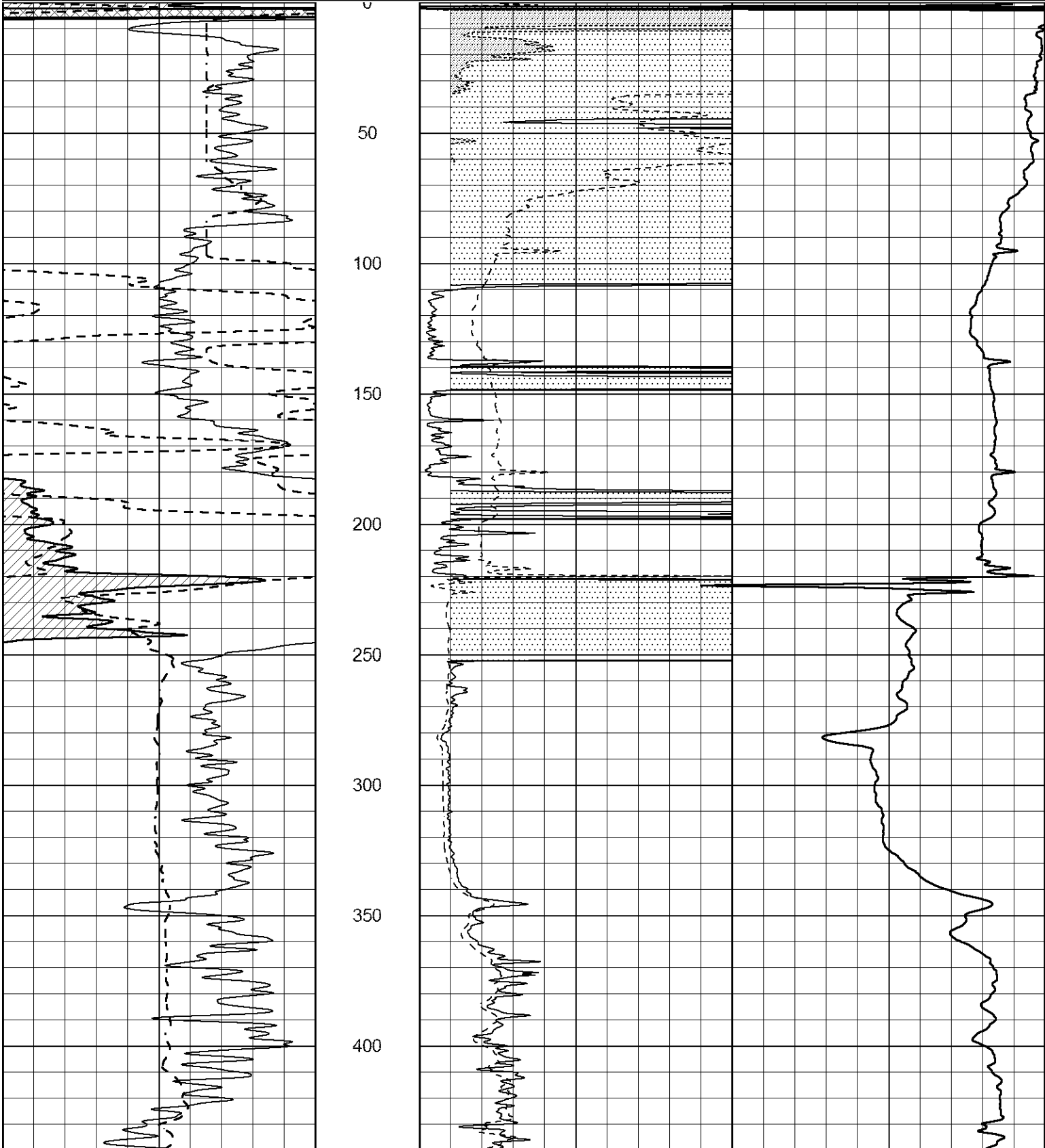


# MAIN SECTION

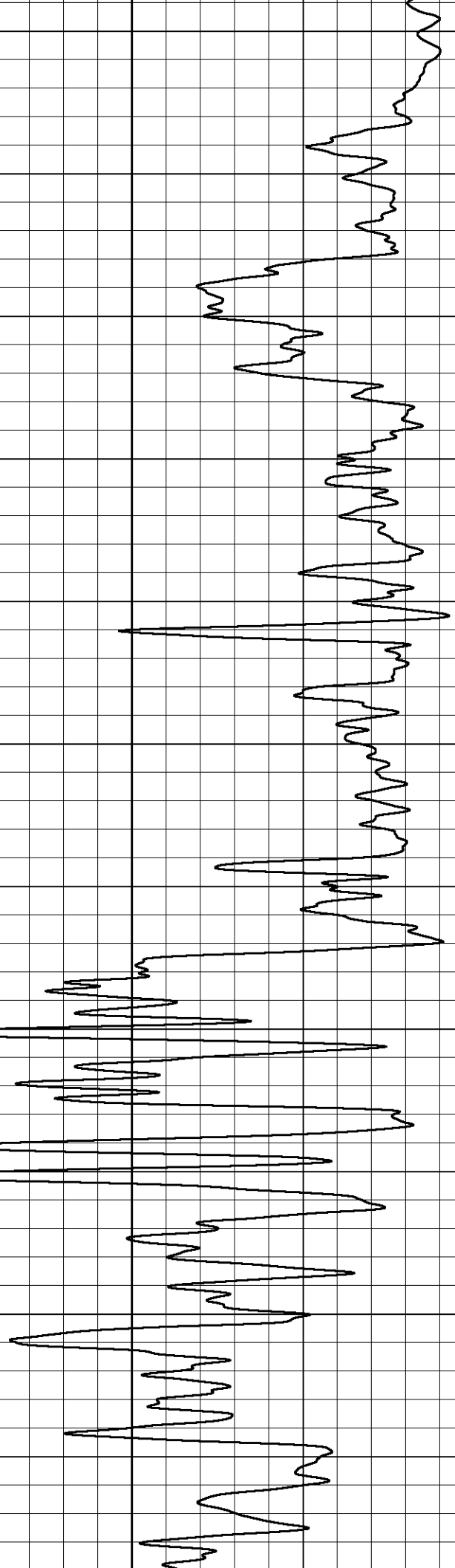
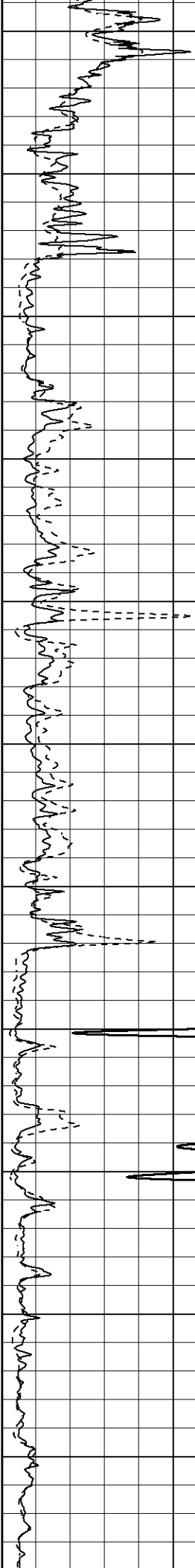
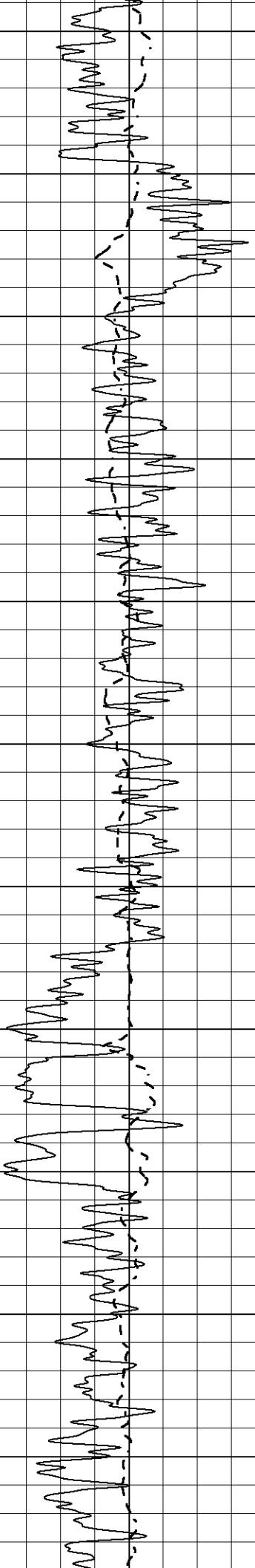
Database File 8358ddn.db  
 Dataset Pathname pass4M  
 Presentation Format \_dil2  
 Dataset Creation Thu Oct 05 09:12:28 2023  
 Charted by Depth in Feet scaled 1:600

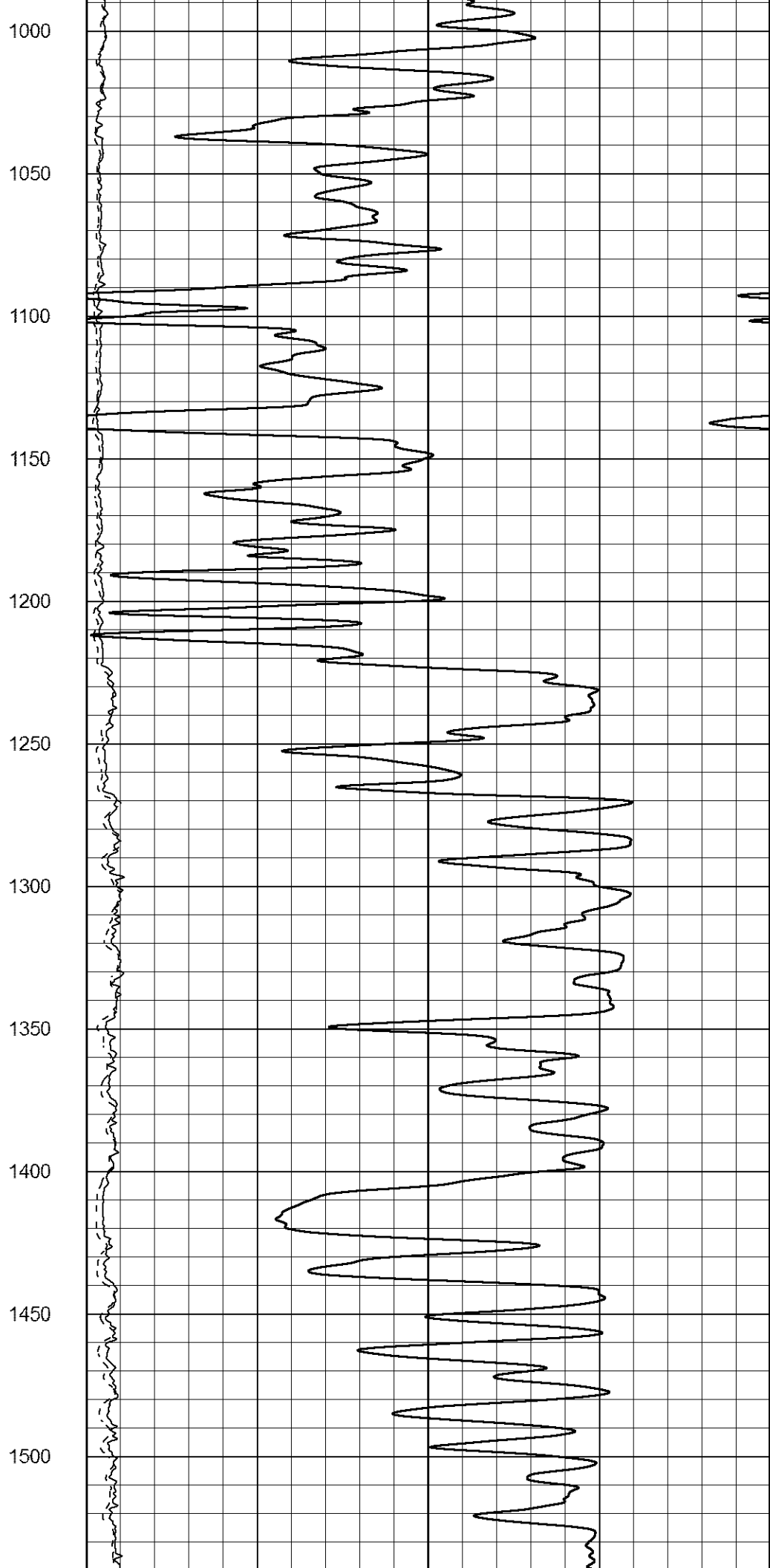
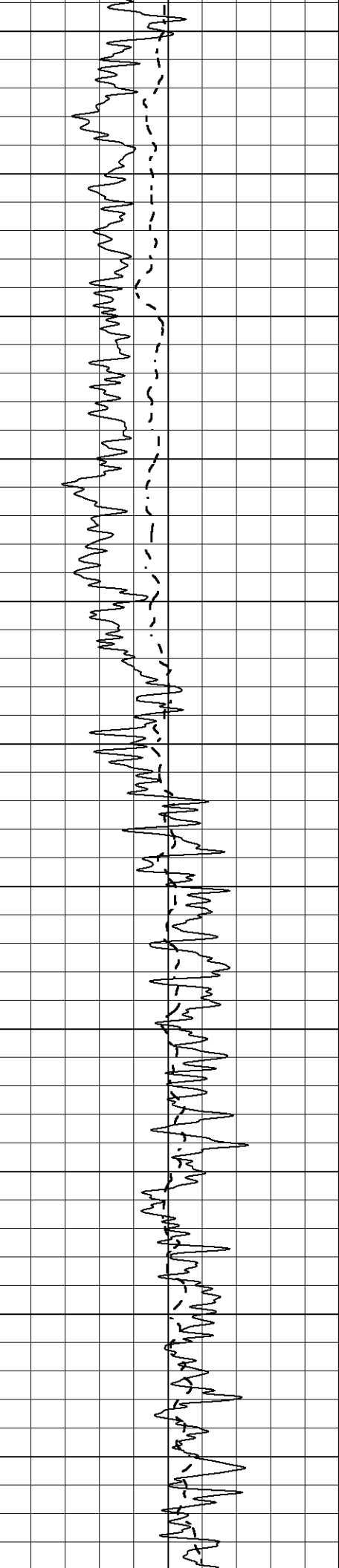
0 Gamma Ray (GAPI) 150  
 -100 SP (mV) 100

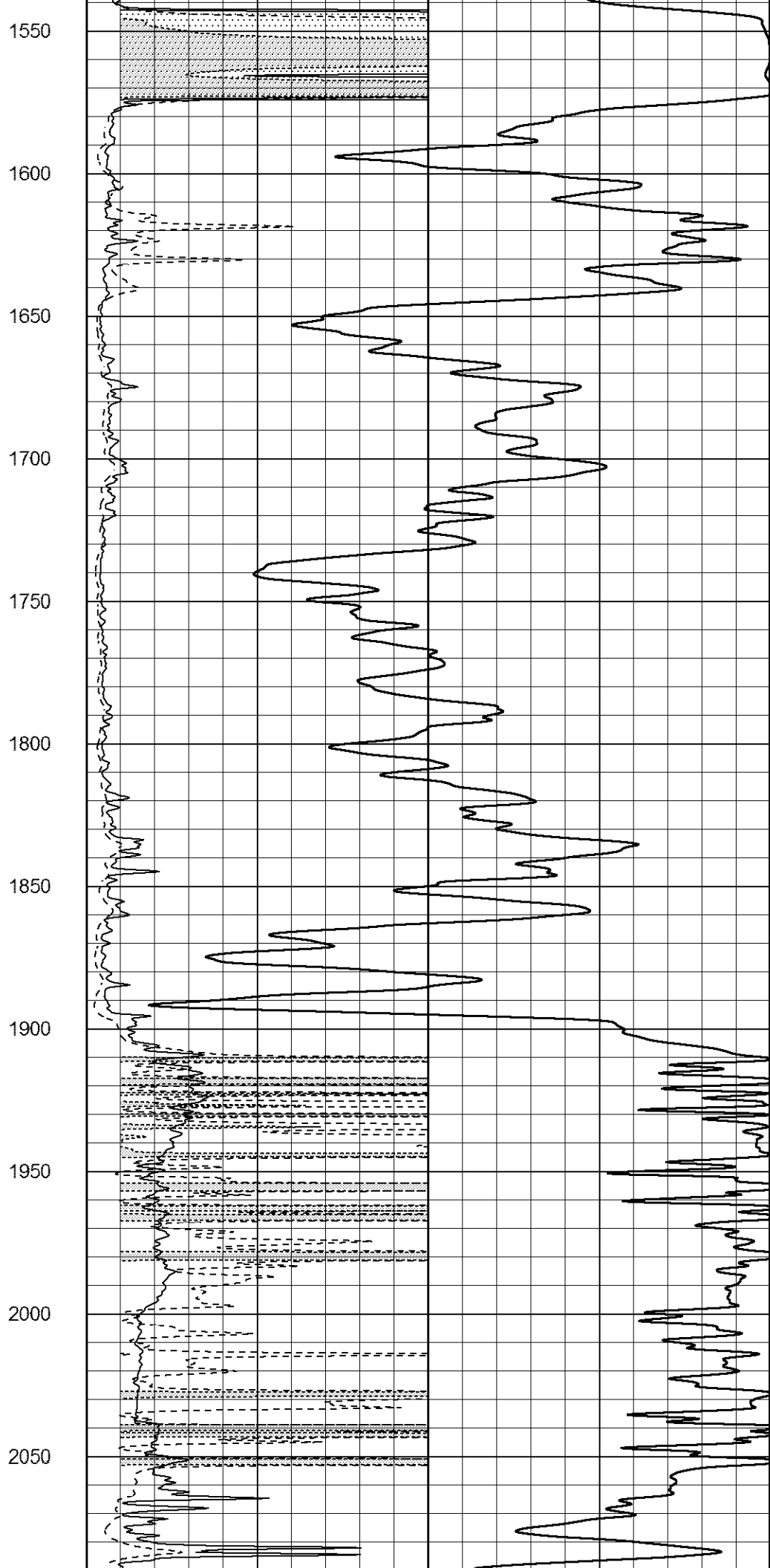
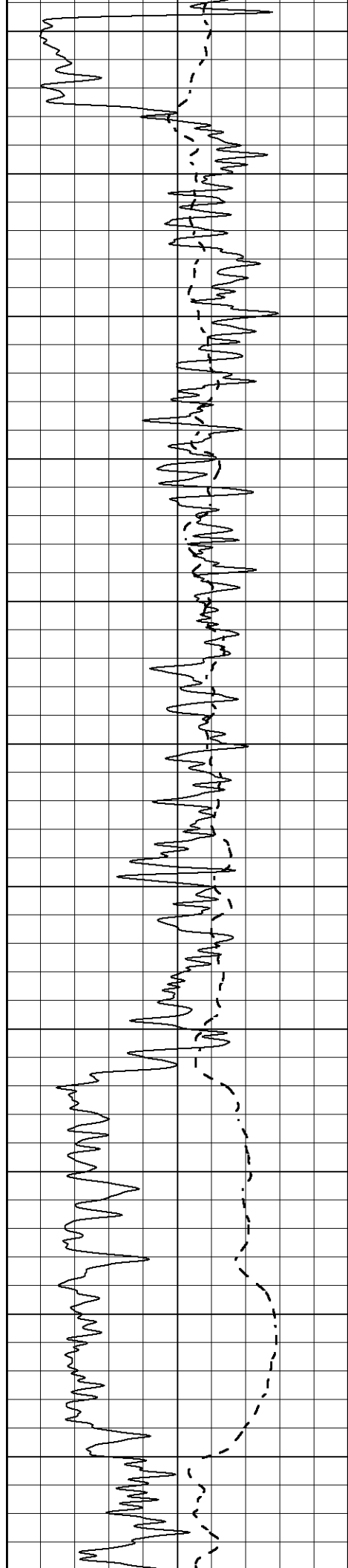
1000 CILD (mmho/m) 0  
 0 RLL3 (Ohm-m) 50  
 0 Deep Induction (Ohm-m) 50  
 50 RILD X10 (Ohm-m) 500  
 50 RLL3 X10 (Ohm-m) 500

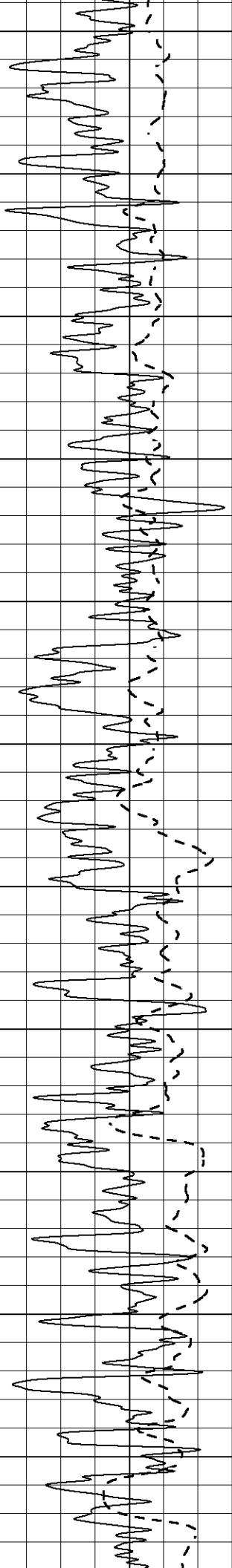


450  
500  
550  
600  
650  
700  
750  
800  
850  
900  
950

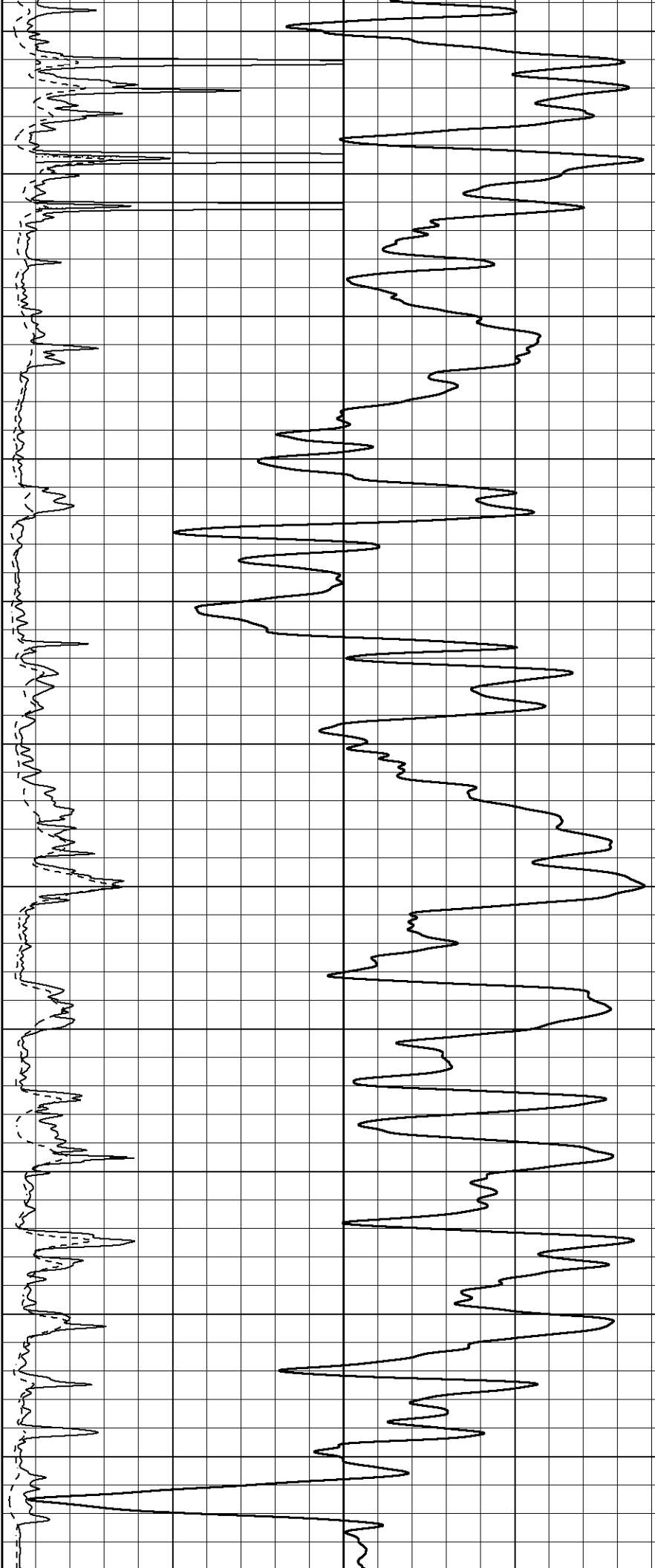




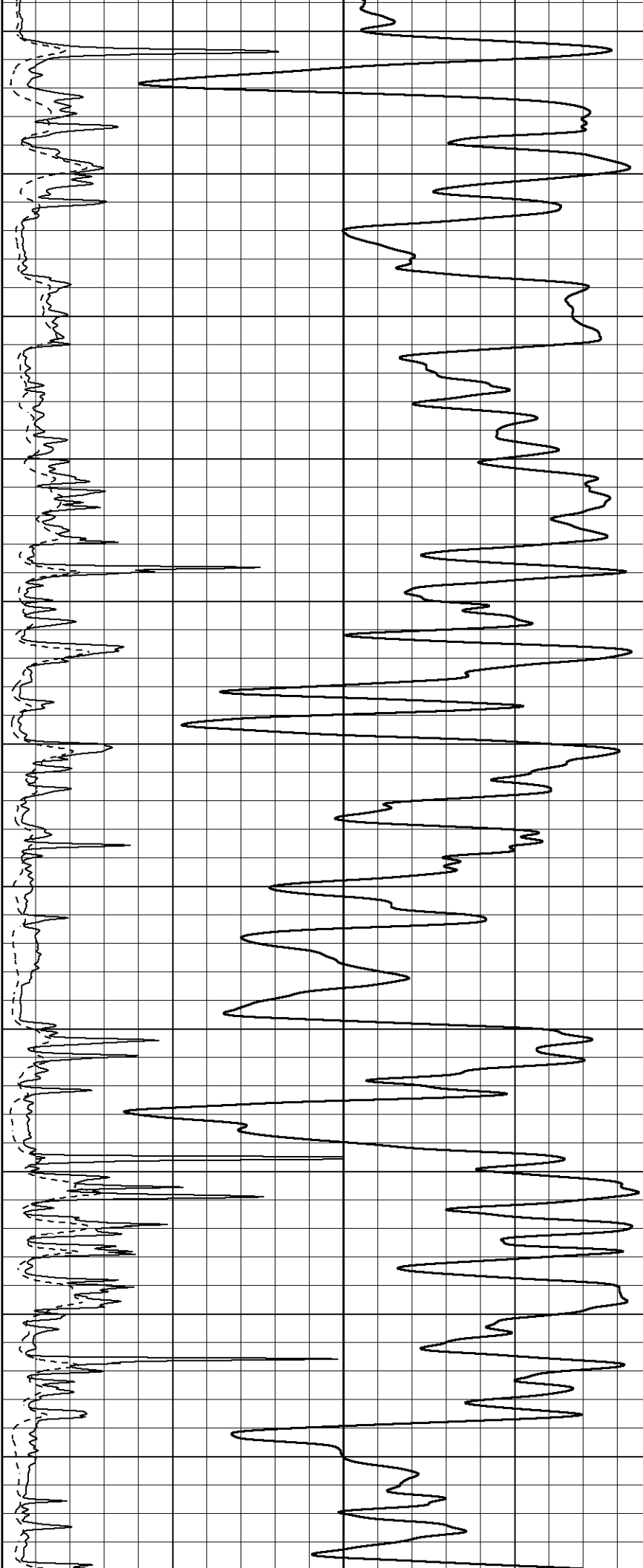
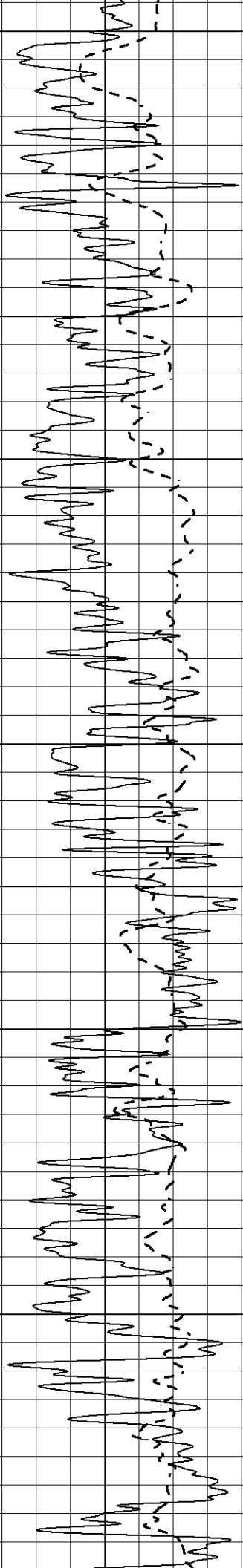


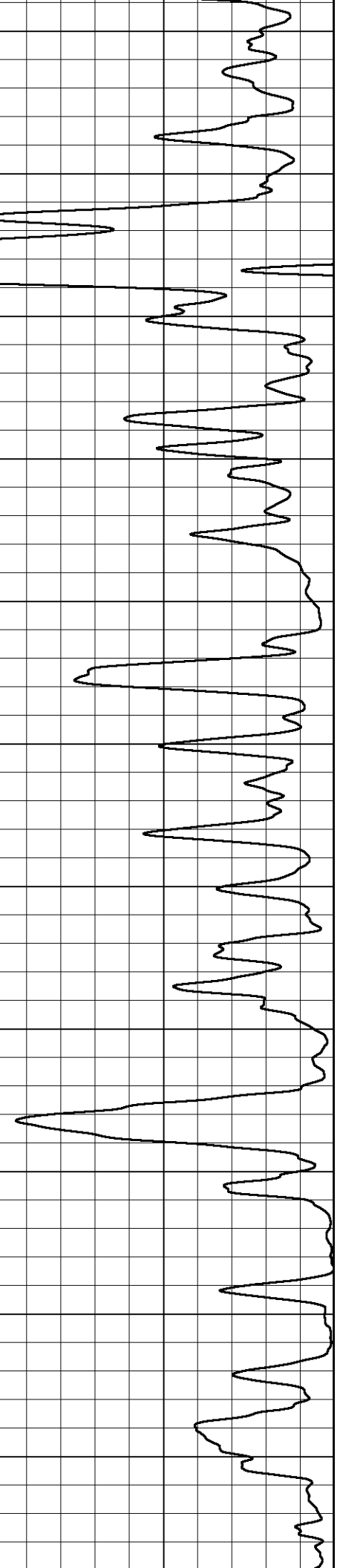
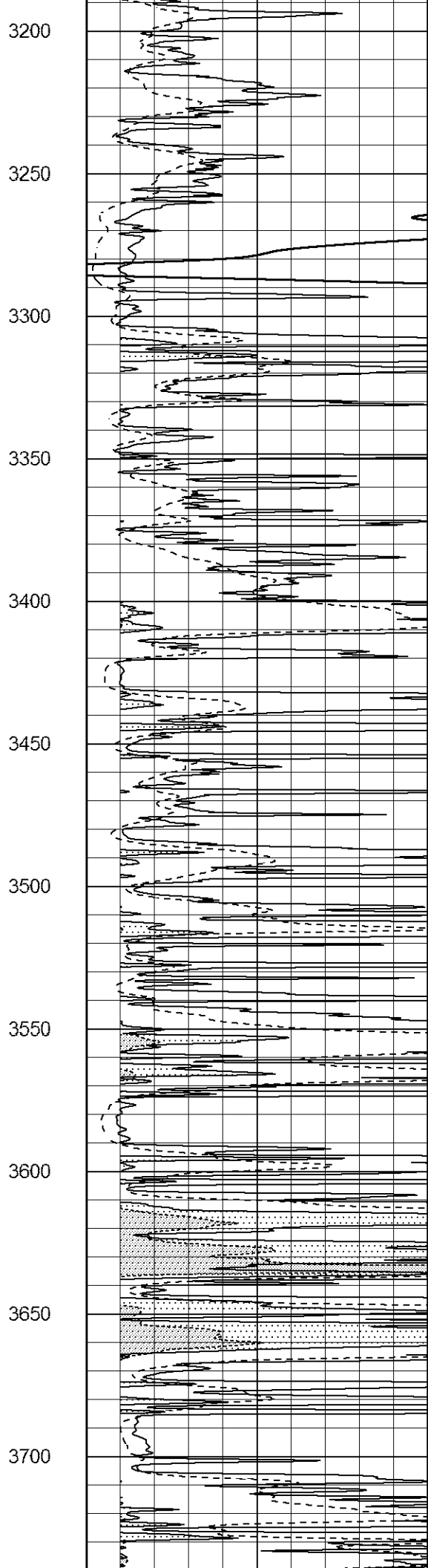
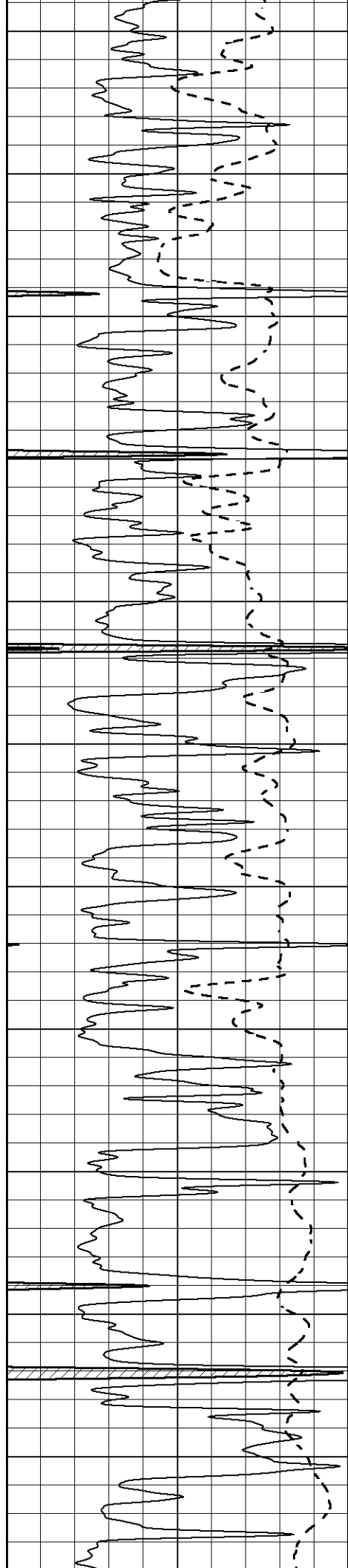


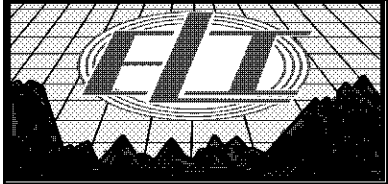
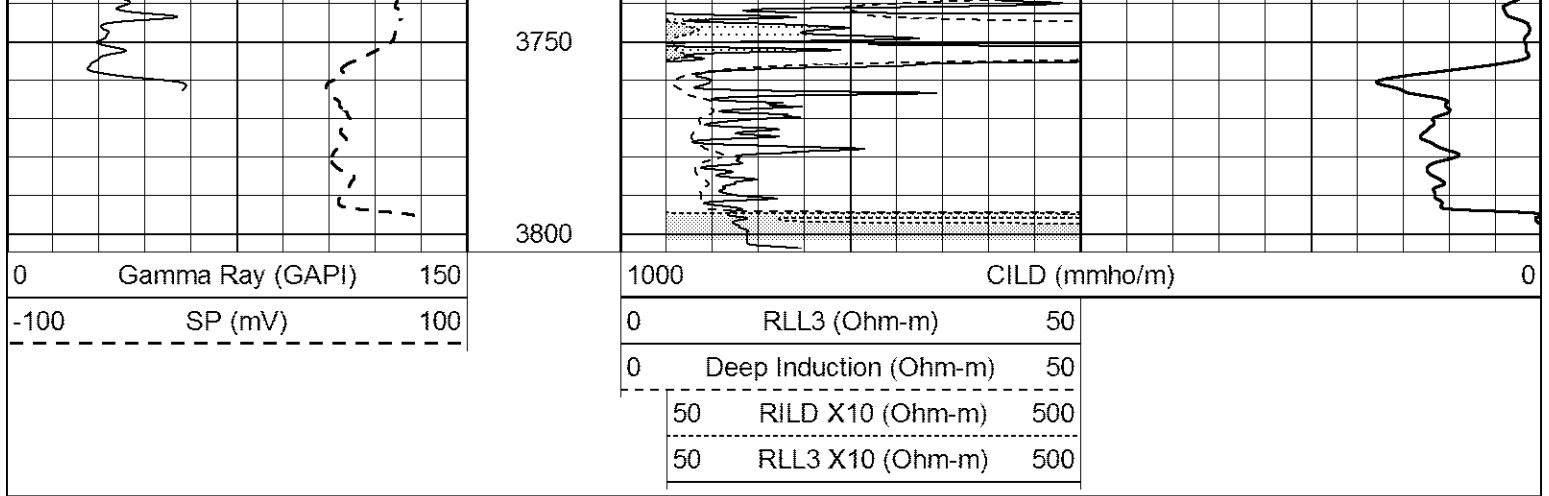
2100  
2150  
2200  
2250  
2300  
2350  
2400  
2450  
2500  
2550  
2600



2650  
2700  
2750  
2800  
2850  
2900  
2950  
3000  
3050  
3100  
3150

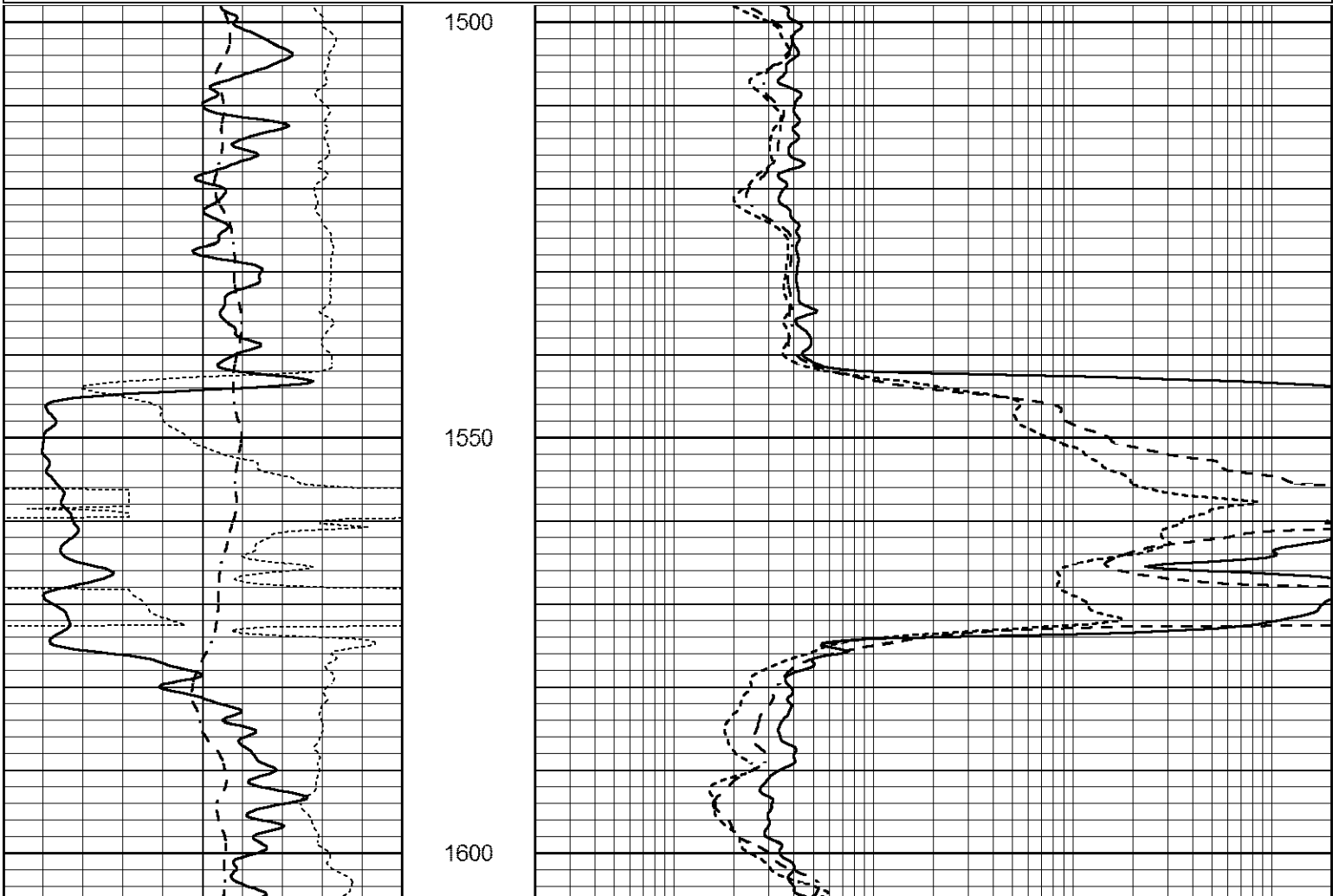
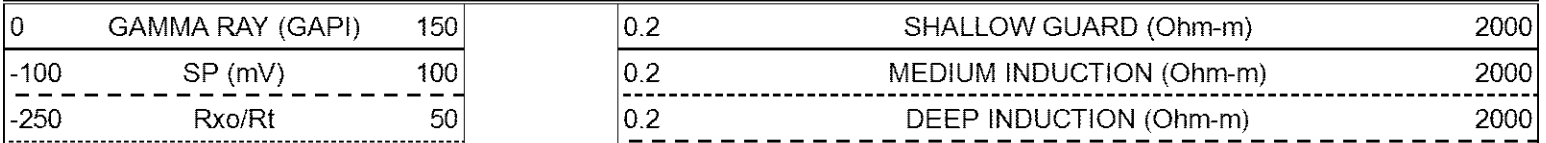


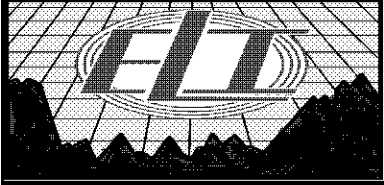
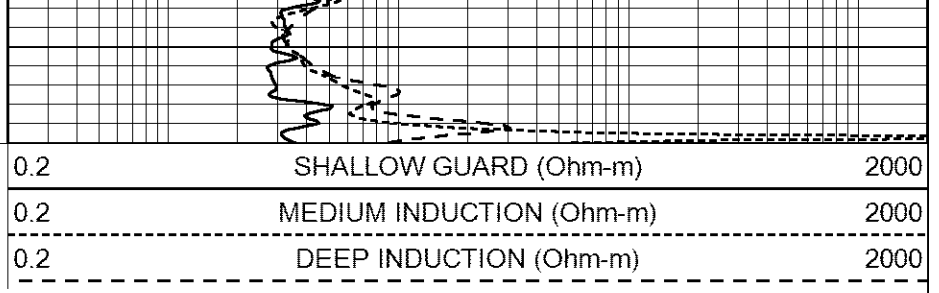
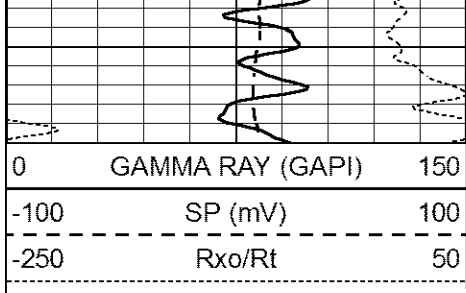




# ANHYDRITE

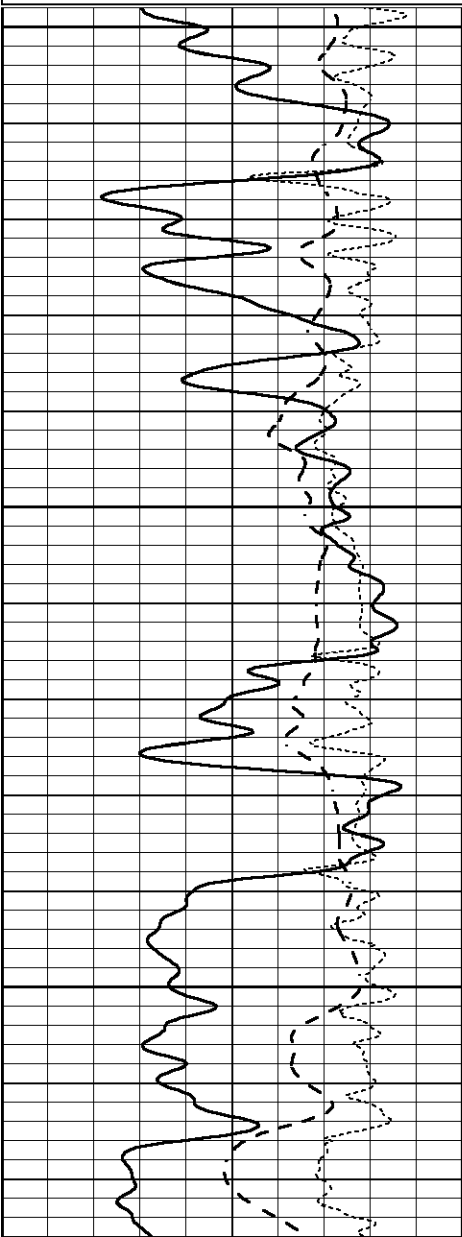
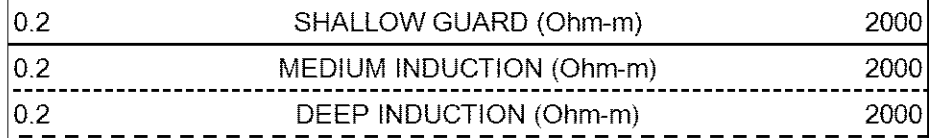
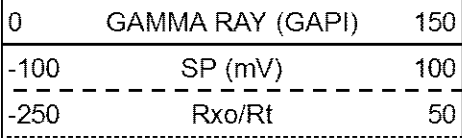
Database File 8358ddn.db  
 Dataset Pathname pass4A  
 Presentation Format \_dil  
 Dataset Creation Thu Oct 05 08:52:36 2023  
 Charted by Depth in Feet scaled 1:240





# MAIN SECTION

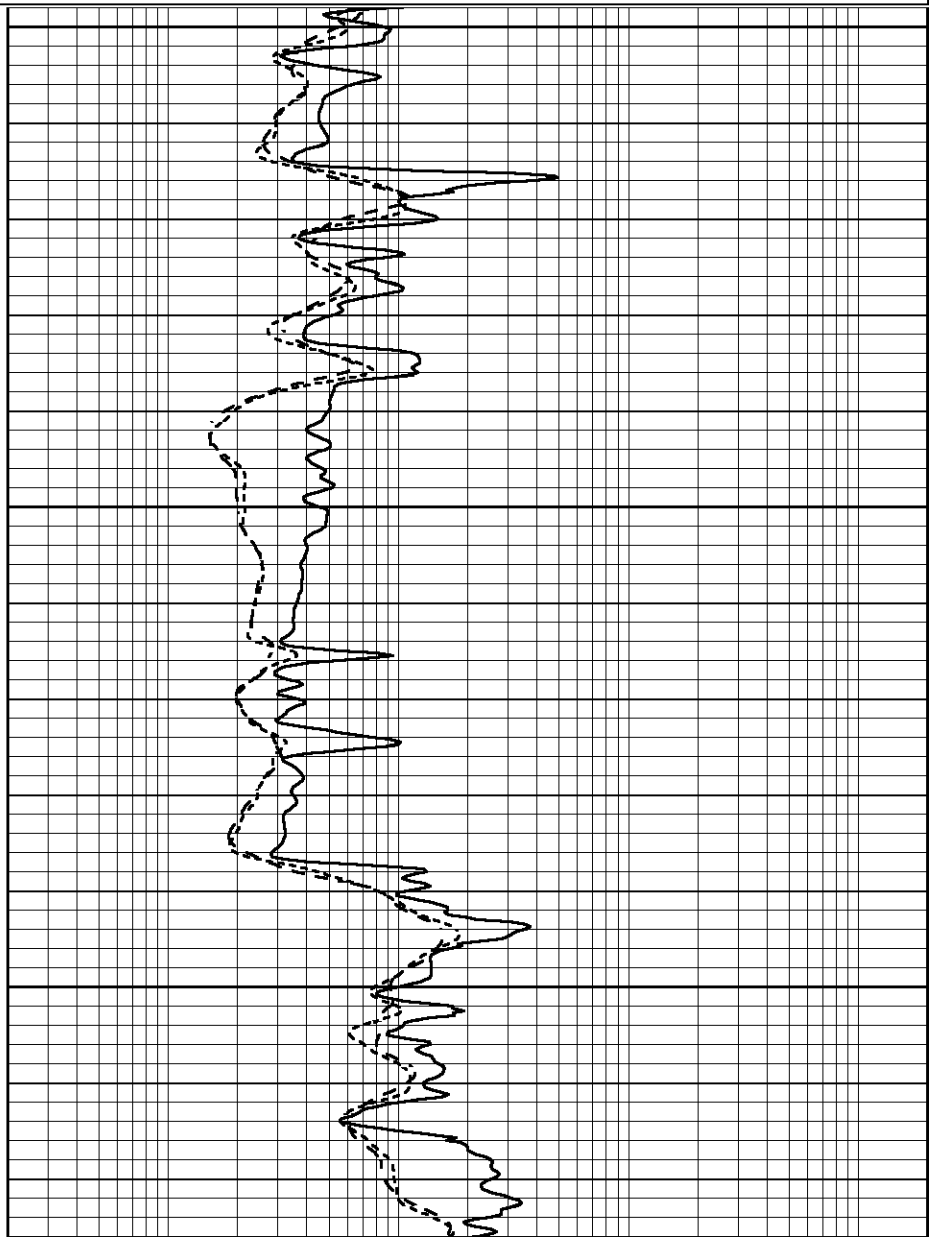
Database File 8358ddn.db  
 Dataset Pathname pass4D  
 Presentation Format \_dil  
 Dataset Creation Thu Oct 05 08:53:42 2023  
 Charted by Depth in Feet scaled 1:240

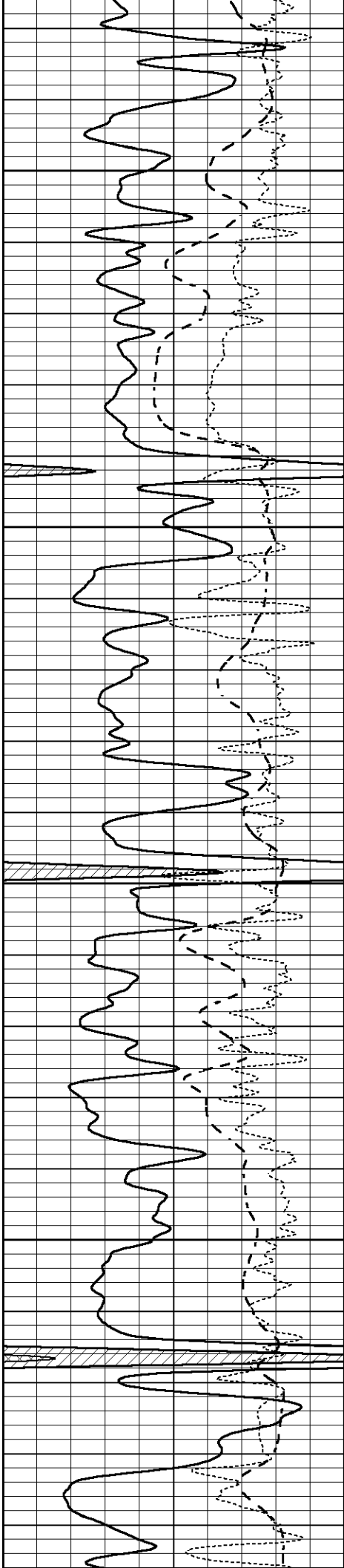


3100

3150

3200



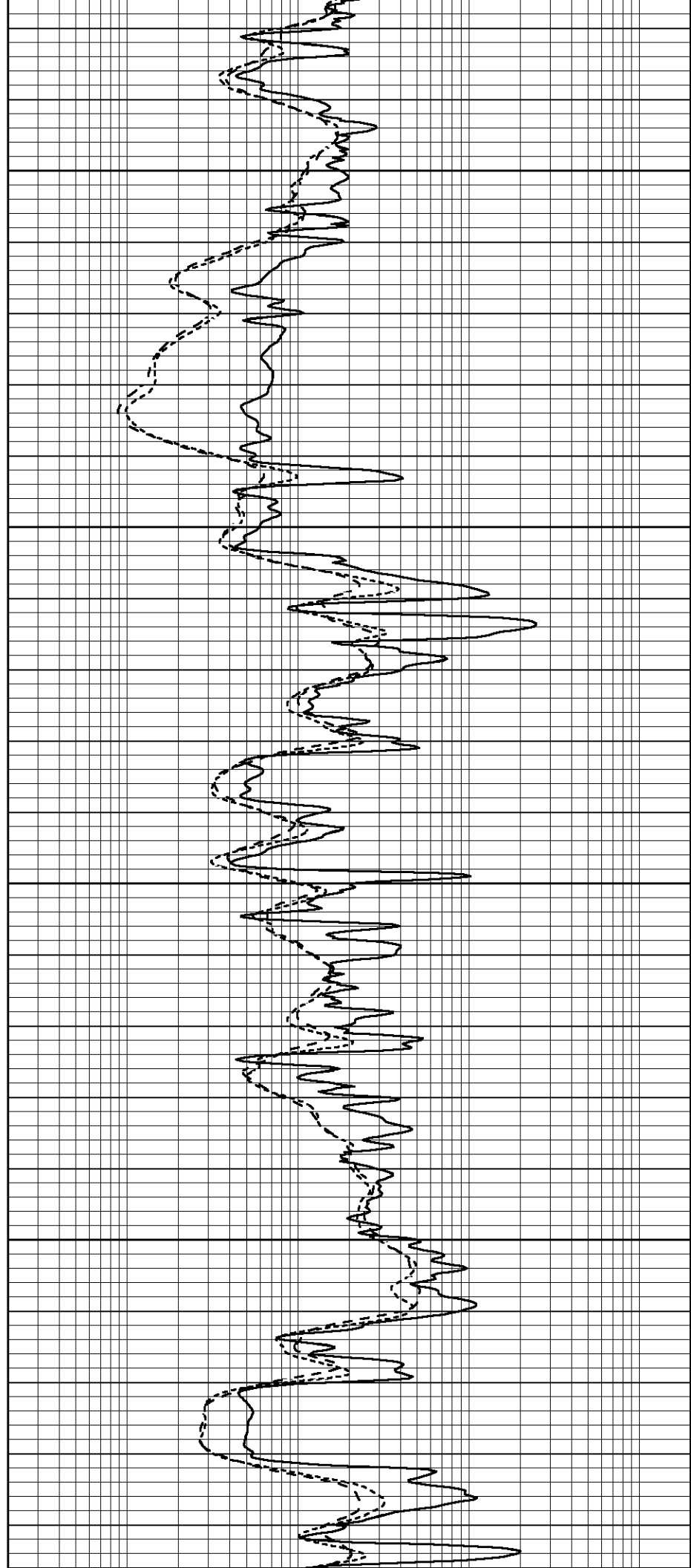


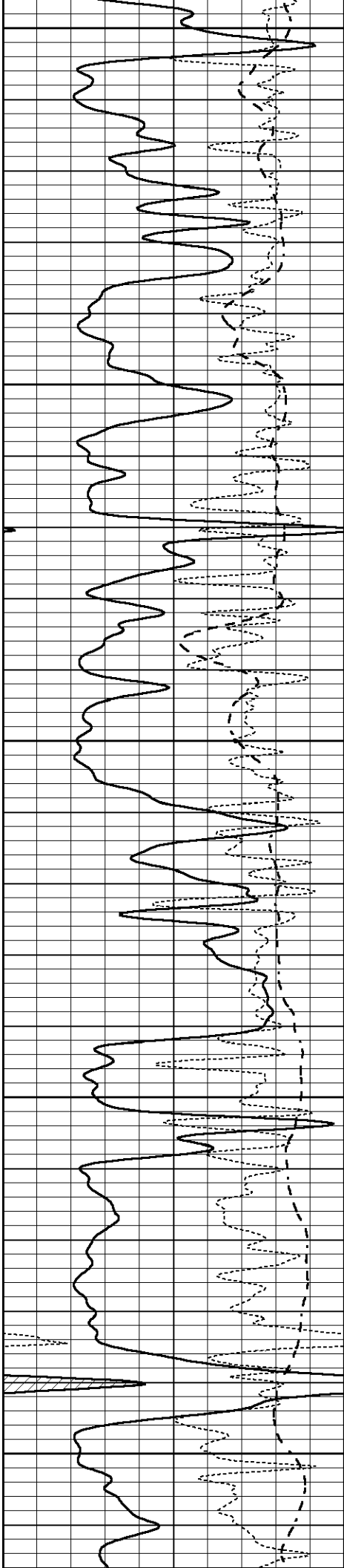
3250

3300

3350

3400





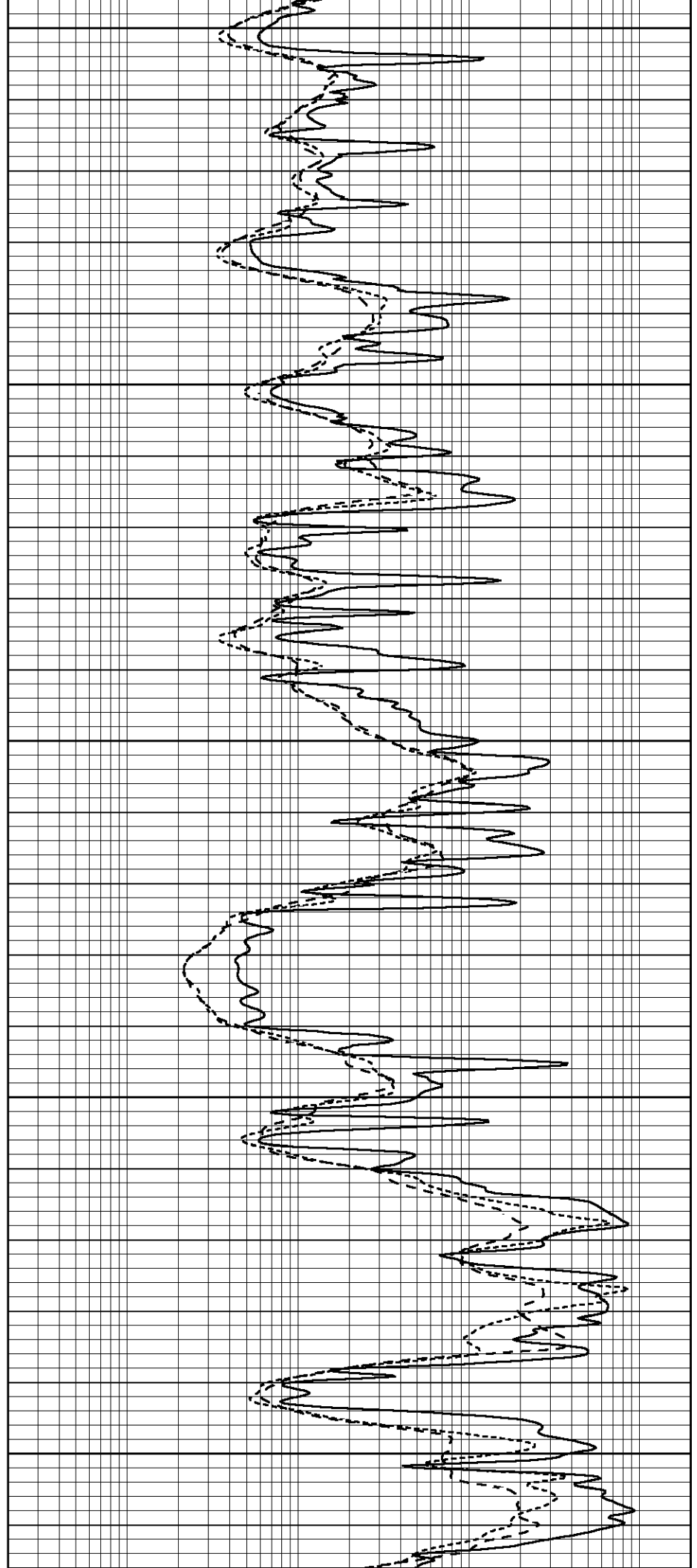
3450

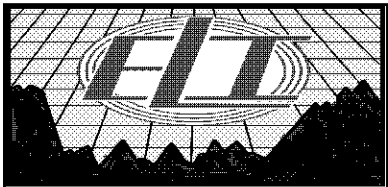
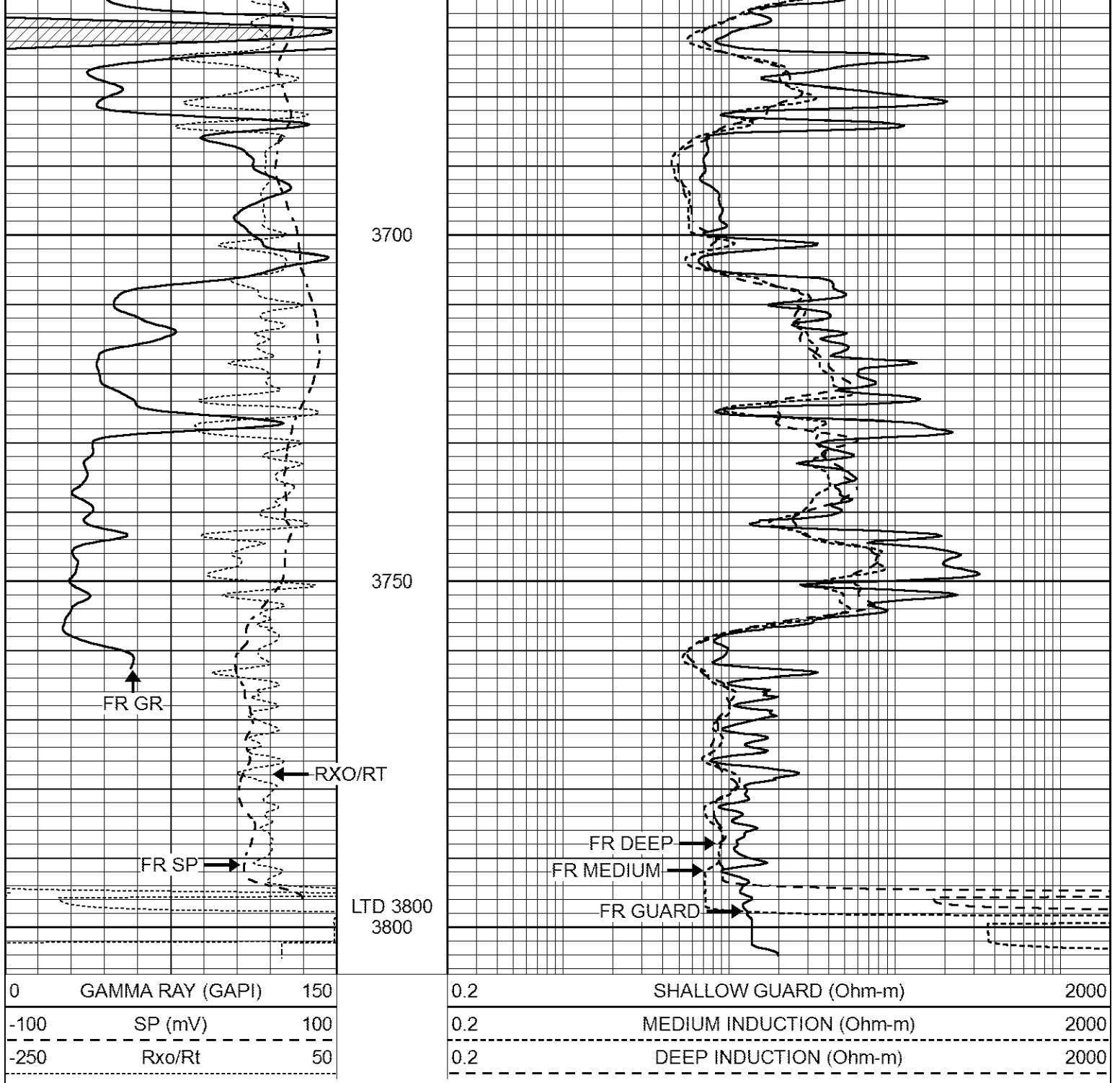
3500

3550

3600

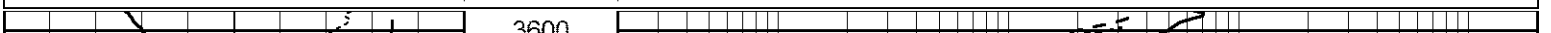
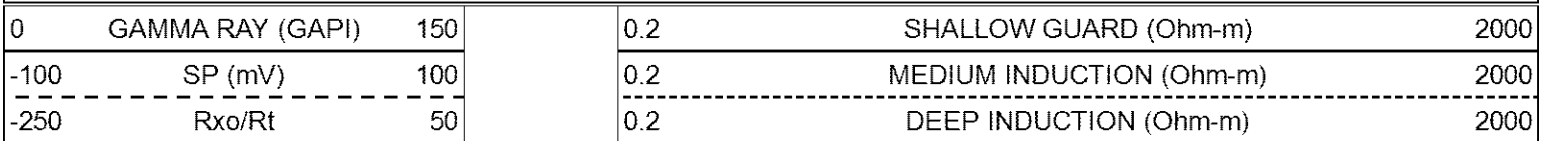
3650

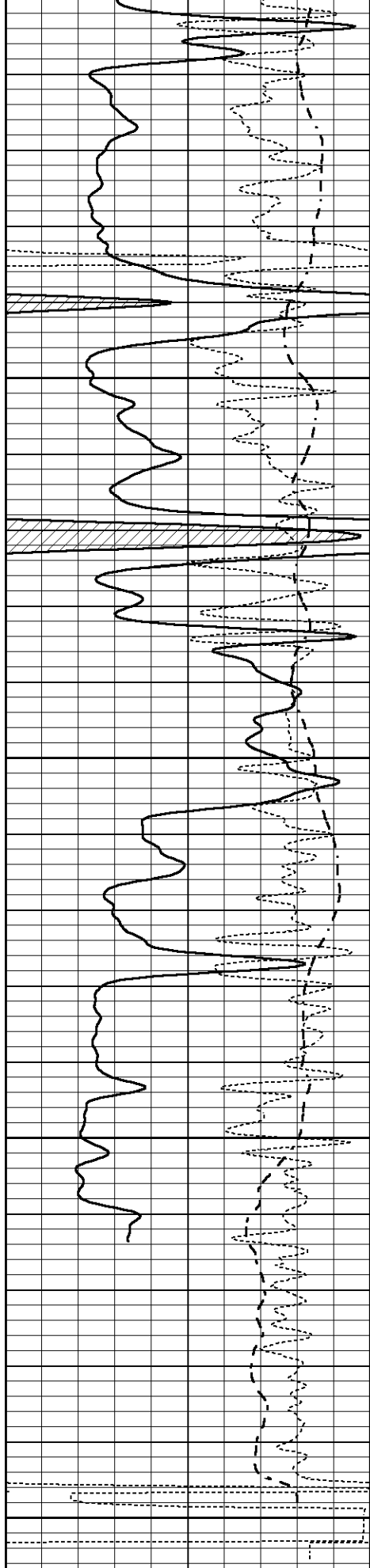




# REPEAT SECTION

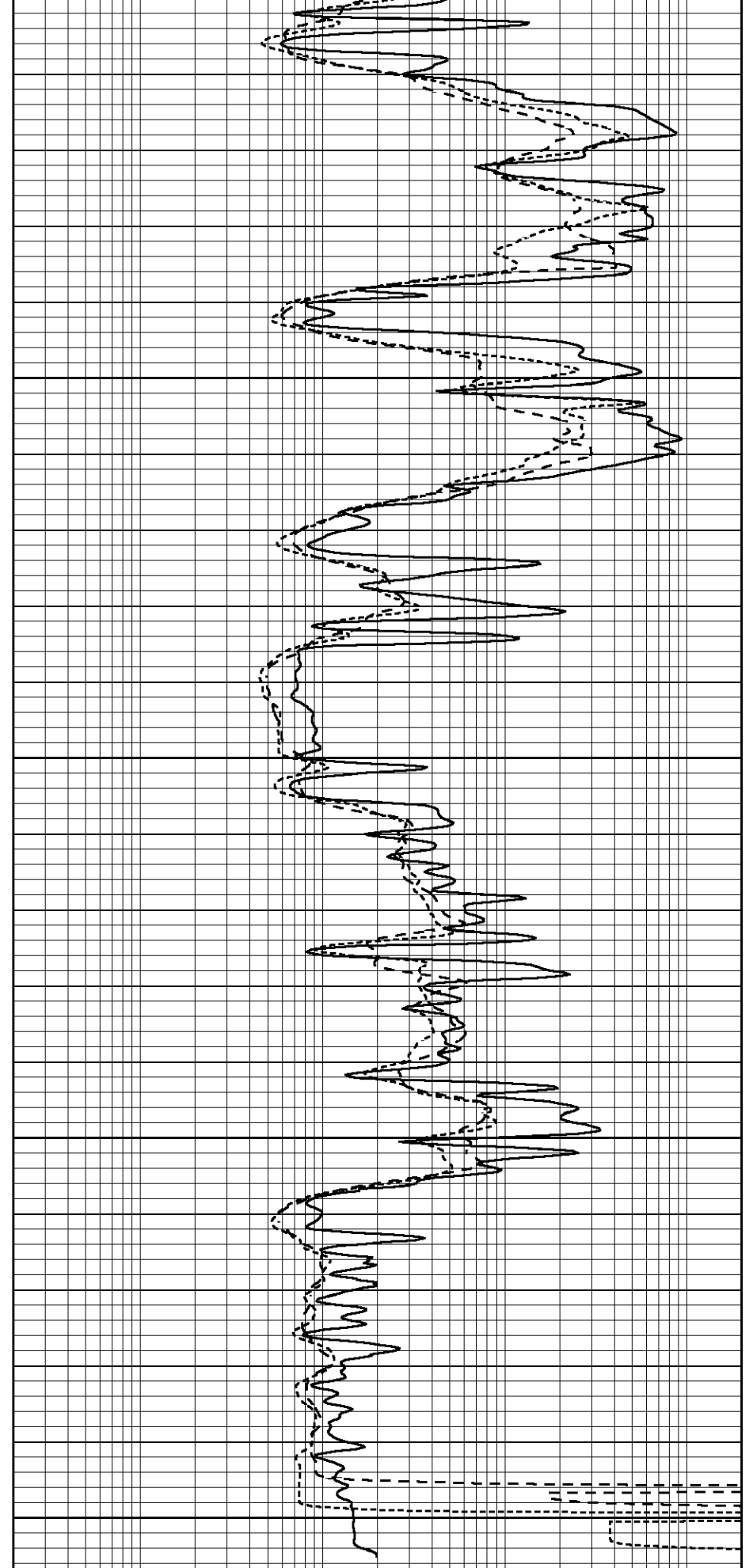
Database File 8358ddn.db  
 Dataset Pathname pass3R  
 Presentation Format \_dil  
 Dataset Creation Thu Oct 05 08:41:39 2023  
 Charted by Depth in Feet scaled 1:240





3600  
3650  
3700  
3750  
3800

0	GAMMA RAY (GAPI)	150
-100	SP (mV)	100
-250	Rxo/Rt	50



0.2	SHALLOW GUARD (Ohm-m)	2000
0.2	MEDIUM INDUCTION (Ohm-m)	2000
0.2	DEEP INDUCTION (Ohm-m)	2000

Calibration Report

Database File 8358ddn.db  
 Dataset Pathname pass4M  
 Dataset Creation Thu Oct 05 09:12:28 2023

Dual Induction Calibration Report

Serial-Model: FW1410-55-Probe  
 Surface Cal Performed: Sat Jul 29 01:57:42 2023  
 Downhole Cal Performed: Tue Feb 19 11:44:24 2019  
 After Survey Verification Performed: Tue Feb 19 11:44:27 2019

Surface Calibration

Loop:	Readings			References			Results	
	Air	Loop		Air	Loop		m	b
Deep	0.011	0.656	V	1.000	400.000	mmho/m	565.000	-9.000
Medium	-0.000	0.731	V	1.000	464.000	mmho/m	530.000	-9.500
Internal:	Zero	Cal		Zero	Cal		m	b
Deep	0.007	0.649	V	0.000	400.000	mmho/m	623.784	-4.595
Medium	0.004	0.743	V	0.000	464.000	mmho/m	627.284	-2.251

Downhole Calibration

	Readings			References			Results	
	Zero	Cal		Zero	Cal		m'	b'
Deep	-0.824	395.917	mmho/m	-0.976	397.550	mmho/m	1.004	-0.149
Medium	3.565	471.327	mmho/m	3.468	471.590	mmho/m	1.001	-0.099
LL3		7.503	V		1500.000	Ohm-m		
		0.001	V		20.000	Ohm-m		
		-7.481	V		3745.000	mmho-m		

After Survey Verification

	Readings			Targets			Results	
	Zero	Cal		Zero	Cal		m'	b'
Deep	0.000	0.000	mmho/m	-0.824	395.917	mmho/m	1.000	0.000
Medium	0.000	0.000	mmho/m	3.565	471.327	mmho/m	1.000	0.000
LL3		0.000	Ohm-m		1500.000	Ohm-m		
		0.000	Ohm-m		20.000	Ohm-m		
		0.000	mmho-m		3745.000	mmho-m		

Litho Density Calibration Report

Serial: 003 Model: PRB

Master Calibration

Performed Mon May 22 11:42:40 2023

	Background	Magnesium	Aluminum	Aluminum+Fe	
Window 1	1512.3	7465.7	2749.0	2519.6	cps
Window 2	1398.8	6705.7	2507.3	2313.8	cps
Window 3	1289.2	5259.5	2124.1	2009.6	cps
Window 4	351.1	351.6	351.8	353.2	cps
Long Space	0.0	5306.9	1108.5	915.0	cps
Short Space	3.3	2239.9	1441.2	1212.0	cps
Rho		1.7100	2.5900	0.0000	g/cc
Pe		2.0000	2.7500	5.7900	
Rib Angle	: 44.3	Rib Slope	: 0.975	Density/Spine Ratio	: 0.541
Spine Angle	: 74.3	Spine Slope	: 3.551	Spine Intercept	: -18.8

Before Survey Verification

Performed Wed Dec 31 18:00:00 1969

Window 1	0.0	0.0	0.0	0.0	cps
Window 2	0.0	0.0	0.0	0.0	cps
Window 3	0.0	0.0	0.0	0.0	cps
Window 4	0.0	0.0	0.0	0.0	cps
Long Space	0.0	0.0	0.0	0.0	cps
Short Space	0.0	0.0	0.0	0.0	cps
Measured Rho		0.0000	0.0000	0.0000	g/cc
Measured Correction		0.0000	0.0000	0.0000	g/cc
Measured Pe			0.0000	0.0000	

After Survey Verification

Performed Wed Dec 31 18:00:00 1969

Window 1	0.0	0.0	0.0	0.0	cps
Window 2	0.0	0.0	0.0	0.0	cps
Window 3	0.0	0.0	0.0	0.0	cps
Window 4	0.0	0.0	0.0	0.0	cps
Long Space	0.0	0.0	0.0	0.0	cps
Short Space	0.0	0.0	0.0	0.0	cps
Measured Rho		0.0000	0.0000	0.0000	g/cc
Measured Correction		0.0000	0.0000	0.0000	g/cc
Measured Pe			0.0000	0.0000	

Compensated Neutron Calibration Report

Serial Number: 080621PMC  
 Tool Model: NABORS

PRE-SURVEY VERIFICATION

Detector	Readings	Measured	Target
Short Space	cps		
Long Space	cps	pu	pu

POST-SURVEY VERIFICATION

Detector	Readings	Measured	Target
Short Space	cps		
Long Space	cps	pu	pu

Gamma Ray Calibration Report

Serial Number: 46001  
 Tool Model: Probe1  
 Performed: Thu Apr 20 09:55:57 2023

Calibrator Value: 1.0 GAPI

Background Reading: 0.0 cps  
 Calibrator Reading: 1.0 cps

Sensitivity: 0.4300 GAPI/cps