



MICRO LOG

Company MUSTANG ENERGY CORPORATION
Well LEINMILLER #5
Field LEINMILLER
County ELLIS
State KANSAS

Company MUSTANG ENERGY CORPORATION
Well LEINMILLER #5
Field LEINMILLER
County ELLIS State KANSAS

Location: API #: 15-051-27097-0000
1365' FNL & 1285' FWL
NE - NE - SW - NW
SEC 2 TWP 12S RGE 19W
Permanent Datum GROUND LEVEL Elevation 2173
Log Measured From KELLY BUSHING 8' A.G.L
Drilling Measured From KELLY BUSHING
Other Services
CDL/CNL
DIL
Elevation
K.B. 2181
D.F. 2179
G.L. 2173

Date	10/5/23
Run Number	TWO
Depth Driller	3800
Depth Logger	3800
Bottom Logged Interval	3798
Top Log Interval	3100
Casing Driller	8 5/8" @ 222
Casing Logger	222
Bit Size	7 7/8
Type Fluid in Hole	CHEMICAL MUD
Density / Viscosity	9.0/46
PH / Fluid Loss	9.0/9.6
Source of Sample	FLOWLINE
Rm @ Meas. Temp	.800 @ 73F
Rmt @ Meas. Temp	.600 @ 73F
Rmc @ Meas. Temp	.960 @ 73F
Source of Rmf / Rmc	MEASUREMENT
Rm @ BHT	.512 @ 114F
Time Circulation Stopped	4 HOURS
Time Logger on Bottom	10:00 A.M.
Maximum Recorded Temperature	114F
Equipment Number	8916
Location	HAYS, KANSAS
Recorded By	COLE ROBBEN
Witnessed By	CAMERON BRIN

<<< Fold Here >>>

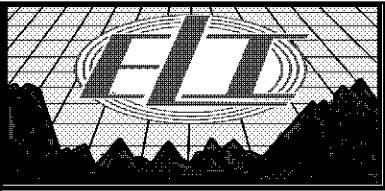
All interpretations are opinions based on inferences from electrical or other measurements and we cannot and do not guarantee the accuracy or correctness of any interpretation, and we shall not, except in the case of gross or willful negligence on our part, be liable or responsible for any loss, costs, damages, or expenses incurred or sustained by anyone resulting from any interpretation made by any of our officers, agents or employees. These interpretations are also subject to our general terms and conditions set out in our current Price Schedule.

Comments

THANK YOU FOR USING ELI WIRELINE SERVICES, HAYS, KS. (785) 628-6395

DIRECTIONS:

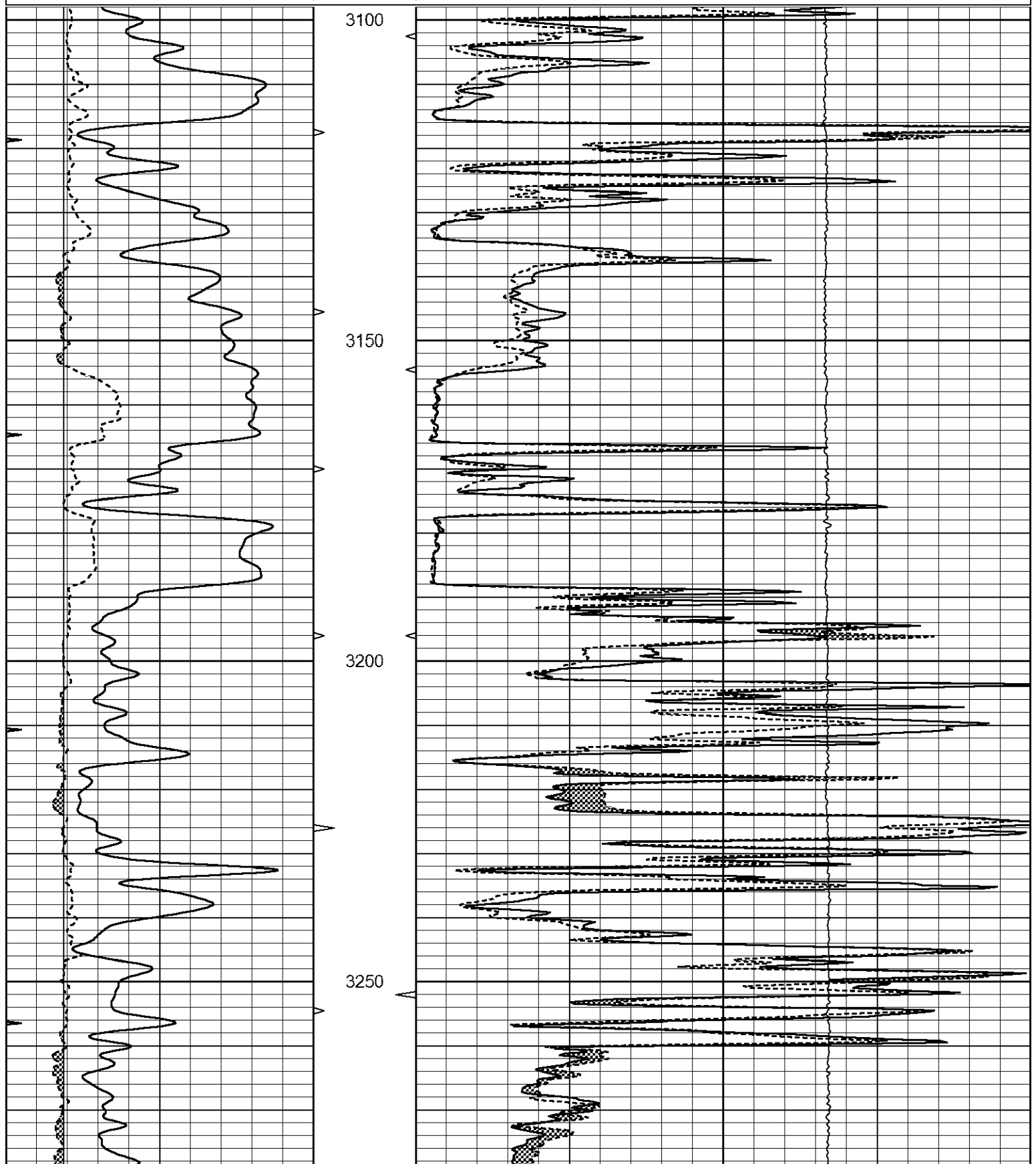
FROM YOCEMENTO EXIT ON I70 GO NORTH 8 MILES TO HOMESTEAD ROAD, EAST 1 1/4 MILES, SOUTH INTO

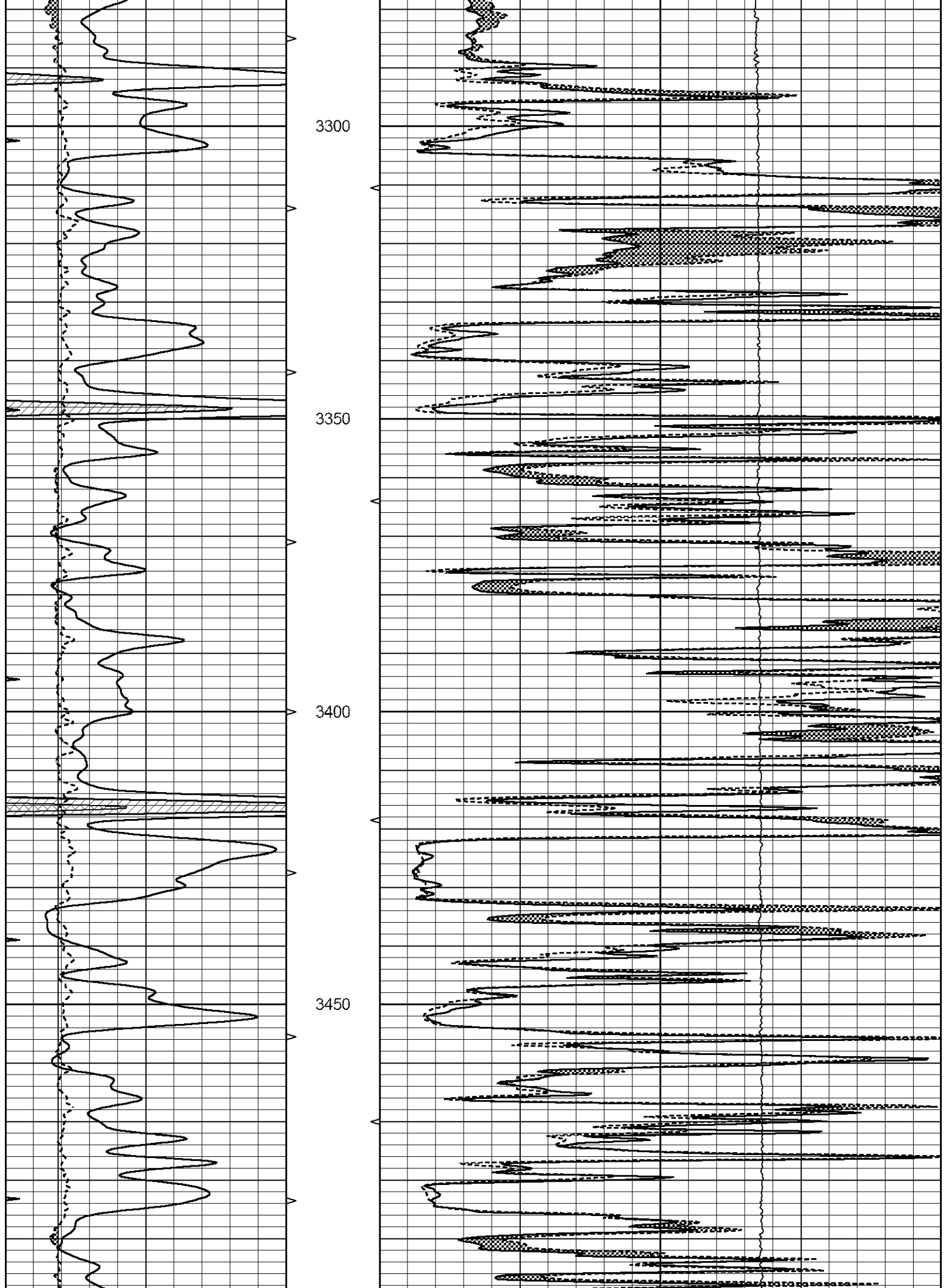


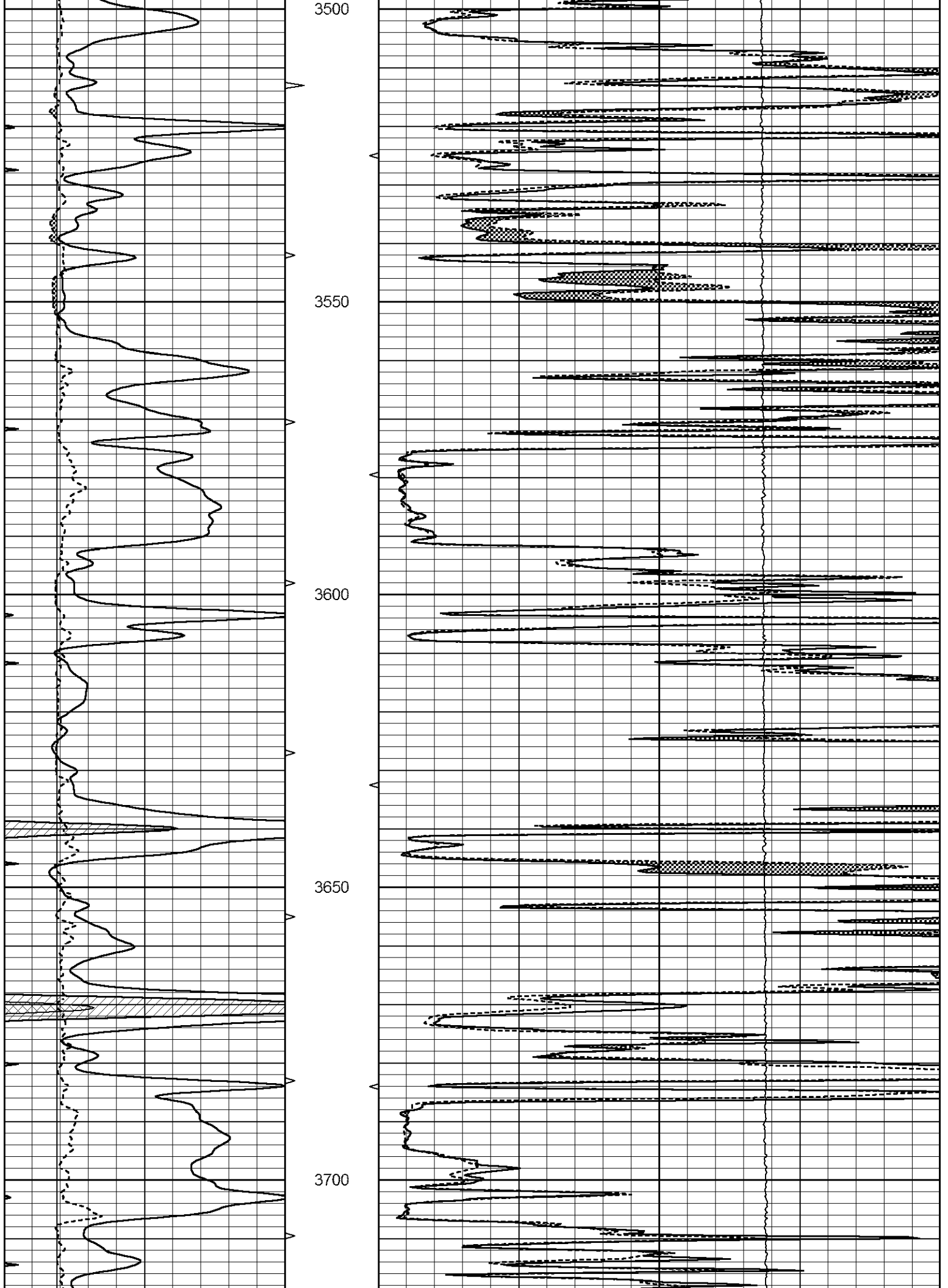
MAIN SECTION

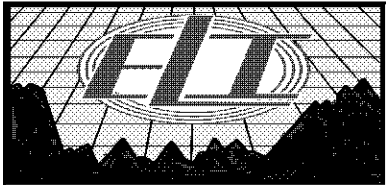
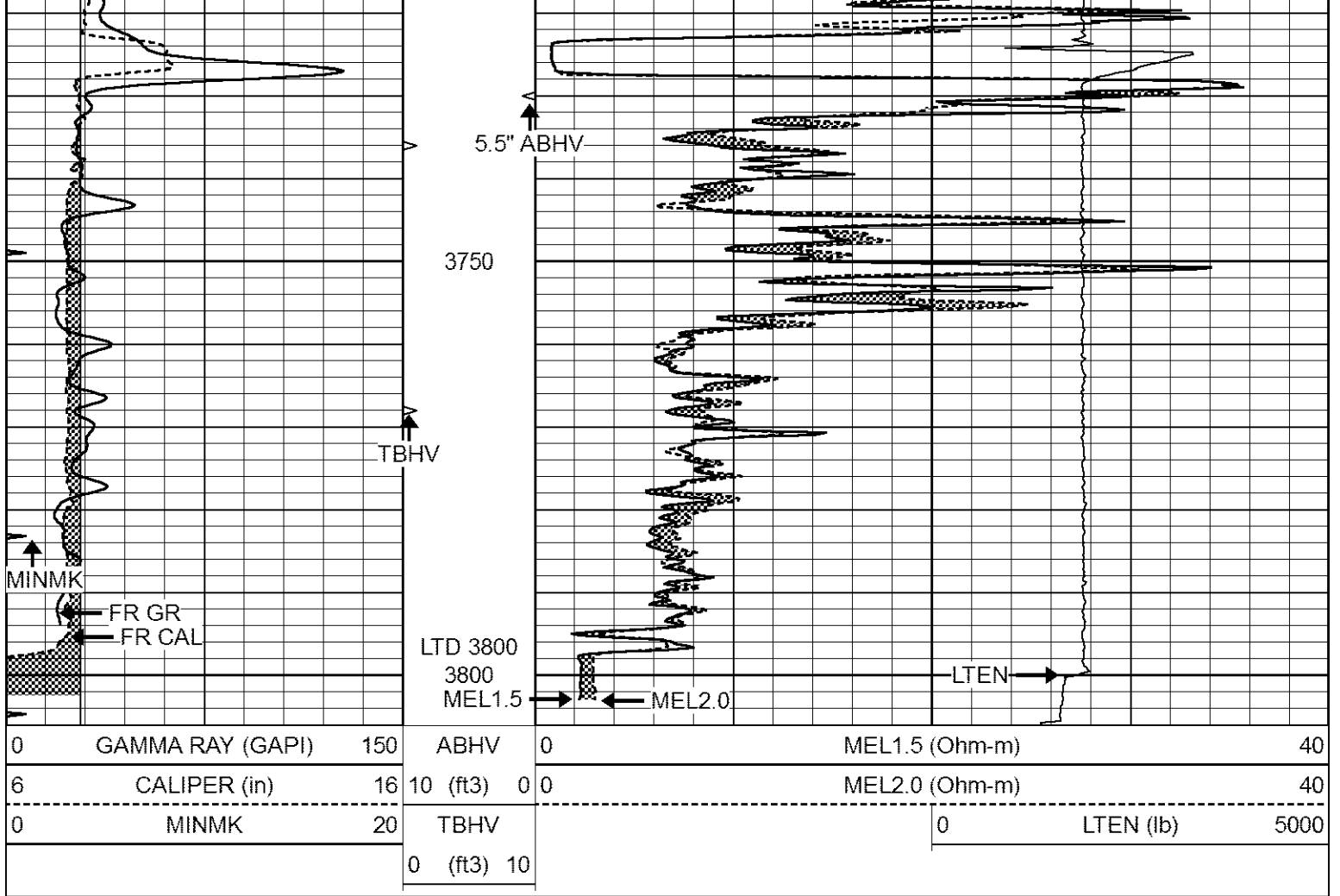
Database File 8358ddn.db
 Dataset Pathname pass7D
 Presentation Format _micro
 Dataset Creation Thu Oct 05 10:12:13 2023
 Charted by Depth in Feet scaled 1:240

0	GAMMA RAY (GAPI)	150	ABHV	0	MEL1.5 (Ohm-m)	40
6	CALIPER (in)	16	10 (ft3)	0	MEL2.0 (Ohm-m)	40
0	MINMK	20	TBHV	0	LTEN (lb)	5000
			0 (ft3)	10		





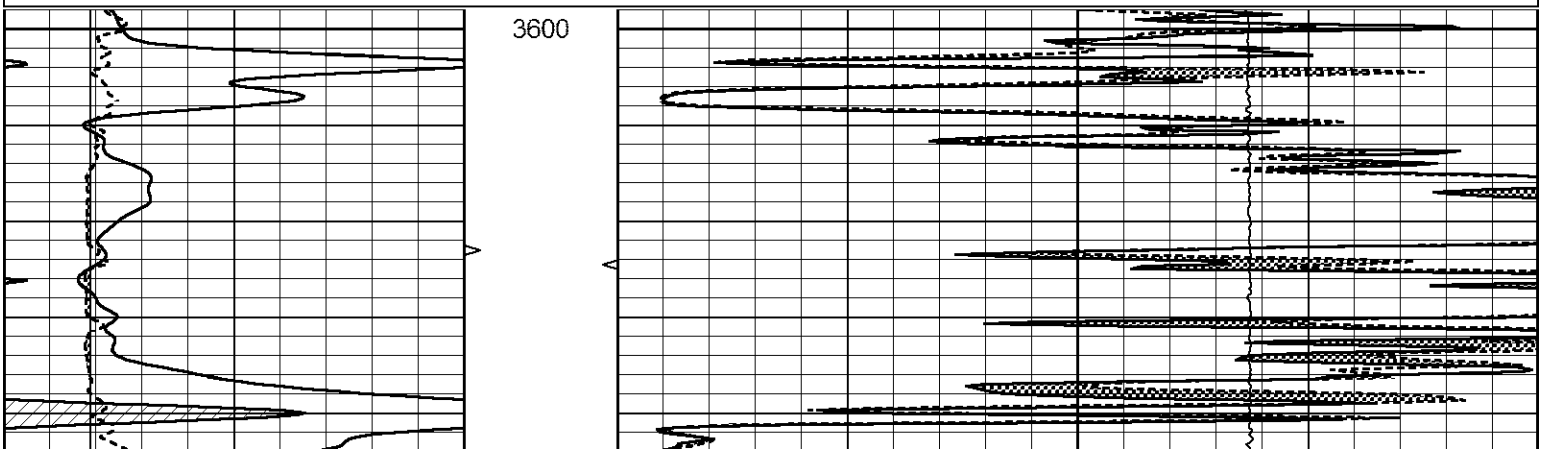


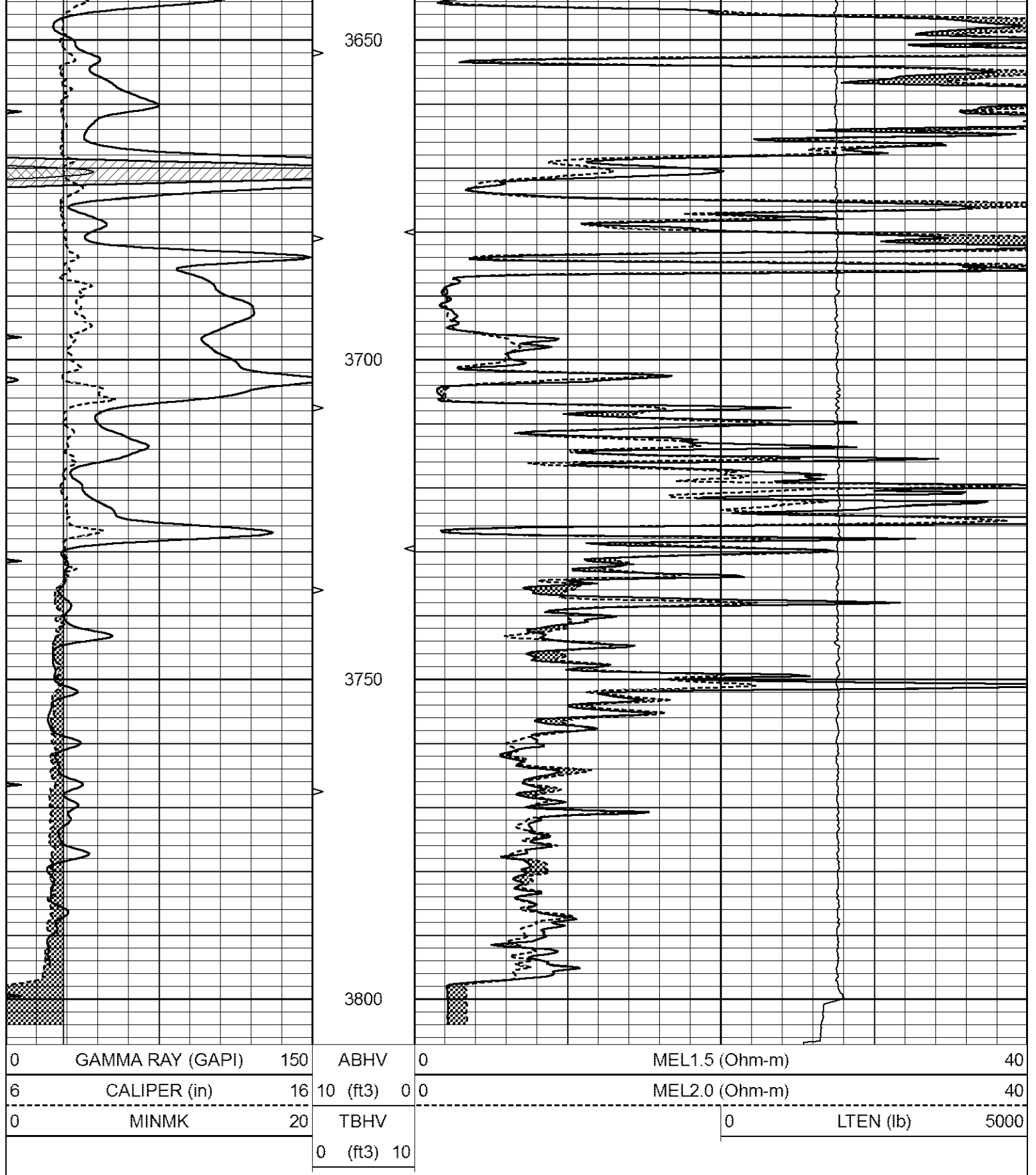


REPEAT SECTION

Database File 8358ddn.db
 Dataset Pathname pass6R
 Presentation Format _micro
 Dataset Creation Thu Oct 05 10:08:55 2023
 Charted by Depth in Feet scaled 1:240

0	GAMMA RAY (GAPI)	150	ABHV	0	MEL1.5 (Ohm-m)	40	
6	CALIPER (in)	16	10 (ft3)	0 0	MEL2.0 (Ohm-m)	40	
0	MINMK	20	TBHV		0	LTEN (lb)	5000
			0 (ft3)	10			





Calibration Report

Database File 8358ddn.db
 Dataset Pathname pass7D
 Dataset Creation Thu Oct 05 10:12:13 2023

MICRO_USR Calibration Report

Serial Number: 070911
 Tool Model: ProbelL

Performed: Fri Sep 15 13:51:55 2023

Caliper Calibration:	Gain=4.500	Offset=0.750
	Low Cal	High Cal
References	8.000	14.000
Readings	1.451	3.049

1.5" Calibration:	Gain=31.500	Offset=-0.500
	Low Cal	High Cal
References	0.000	20.000
Readings	0.004	0.843

2" Calibration:	Gain=36.000	Offset=-0.700
	Low Cal	High Cal
References	0.000	20.000
Readings	0.021	0.810

Microlog Calibration Report

Serial-Model:	070911-ProbeL
Performed:	Sat May 14 04:48:25 2022

	Readings			References			Results	
	Zero	Cal		Zero	Cal		m	b
Normal	0.0002	0.4836	V	0.0000	10.0000	Ohm-m	20.6908	-0.0051
Inverse	0.0018	0.6297	V	0.0000	10.0000	Ohm-m	15.9263	-0.0282
Caliper	0.0000	1.0000	V	0.0000	1.0000	in	1.0000	0.0000

Gamma Ray Calibration Report

Serial Number:	070558
Tool Model:	Probe1
Performed:	Sat Sep 30 18:38:35 2023

Calibrator Value:	1.0	GAPI
-------------------	-----	------

Background Reading:	0.0	cps
Calibrator Reading:	1.0	cps

Sensitivity:	0.2700	GAPI/cps
--------------	--------	----------