



MIDWEST WIRELINE

DUAL COMP POROSITY LOG

Company American Warrior, Inc.
 Well Schroeder #1-9
 Field Wildcat
 County Hodgeman State Kansas

Company American Warrior, Inc.
 Well Schroeder #1-9
 Field Wildcat
 County Hodgeman
 State Kansas

Location: API #: 15-083-22032-00-00
 1379 FSL & 611 FWL
 SEC 9 TWP 23S RGE 23W
 Permanent Datum Ground Level Elevation 2341
 Log Measured From Kelly Bushing
 Drilling Measured From Kelly Bushing
 Other Services
 DIL/MEL
 BHCS
 Elevation
 K.B. 2354
 D.F.
 G.L. 2341

Date	10/2/2023						
Run Number	One						
Type Log	CNL/CDL						
Depth Driller	4775						
Depth Logger	4781						
Bottom Logged Interval	4752						
Top Logged Interval	3800						
Type Fluid In Hole	Chemical						
Salinity, PPM CL	5700						
Density	9.3						
Level	Full						
Max. Rec. Temp. F	124						
Operating Rig Time	4 Hours						
Equipment -- Location	P-108 HAYS						
Recorded By	D. Schmidt						
Witnessed By	Kevin Timson						
Borehole Record							
Run No.	Bit	From	To	Size	Wgt.	From	To
One	12.25	0	647	8.625	23	0	647
Two	7.875	647	TD				
Casing Record							

<<< Fold Here >>>

All interpretations are opinions based on inferences from electrical or other measurements and Midwest Wireline LLC cannot and does not guarantee the accuracy or correctness of any interpretation, and Midwest Wireline LLC will not be liable or responsible for any loss, costs, damages, or expenses incurred or sustained by anyone resulting from any interpretation made by any of our officers, agents or employees.

Comments

N/A DENOTES NOT AVAILABLE OR NON-APPLICABLE.

Jetmore,
 East to 219 Rd, 2 South, 1 1/2 East,
 North and West into

Log Measured From: Kelly Bushing 13 Ft. Above Permanent Datum

THANK YOU FOR USING MIDWEST WIRELINE LLC
 785-625-3858

Your Midwest Wireline Crew		This Log Record Was Witnessed By	
Engineer: D. Schmidt	Operator:	Primary Witness: Kevin Timson	Secondary Witness:
Operator:	Operator:	Secondary Witness:	Secondary Witness:
Operator:		Secondary Witness:	

Sensor	Offset (ft)	Schematic	Description	Length (ft)	O.D. (in)	Weight (lb)
GR	40.33		GR-M&W (105)	3.00	3.50	50.00
CNLSC CNSSC	37.23 36.48		CNT-M&W (210)	5.00	3.50	100.00
LSD DCAL SSD	28.18 28.17 27.68		CDL-M&W (303-03)	8.50	4.00	250.00
MCAL MI MN	19.58 19.58 19.58		ML-PSIML (401)	7.58	4.00	65.00
RLL3F RLL3	15.50 15.50					
CILD	8.33		DIL-M&W (505 HT)	18.25	3.50	220.00
CILM	4.50					
SP	0.20					

Dataset: am war_schroeder 1-9.db: field/well/stkml/pass3.5
 Total length: 42.33 ft
 Total weight: 685.00 lb
 O.D.: 4.00 in

Log Variables

DatabaseC:\ProgramData\Warrior\Data\am war_schroeder 1-9.db
 Dataset field/well/stkml/pass3.5/_vars_

Top - Bottom

A	BOREID in	BOTTEMP degF	CASEOD in	CASETHCK in	FLUIDDEN g/cc	M	MATRXDEN g/cc
1	7.875	124	5.5	0	1	2	2.71
NPORSEL	PERFS	SNDERR mmho/m	SNDERRM mmho/m	SPSHIFT mV	SRFTEMP degF	SZCOR	TDEPTH ft
Limestone	No	-18	-25	322	80	Off	4781

Variable Description

A : Cement Factor (a)
 BOREID : Borehole I.D.
 BOTTEMP : Bottom Hole Temperature
 CASEOD : Casing O.D.
 CASETHCK : Casing Thickness
 FLUIDDEN : Fluid Density
 M : Cement Exp (m)
 MATRXDEN : Matrix Density

NPORSEL : Neutron Porosity Curve Select
 PERFS : Perforation Flag
 SNDERR : Deep Sonde Error Correction
 SNDERRM : Medium Sonde Error Correction
 SPSHIFT : S.P. Baseline Offset
 SRFTEMP : Surface Temperature
 SZCOR : CN Size Cor. ?
 TDEPTH : Total Depth



MIDWEST WIRELINE

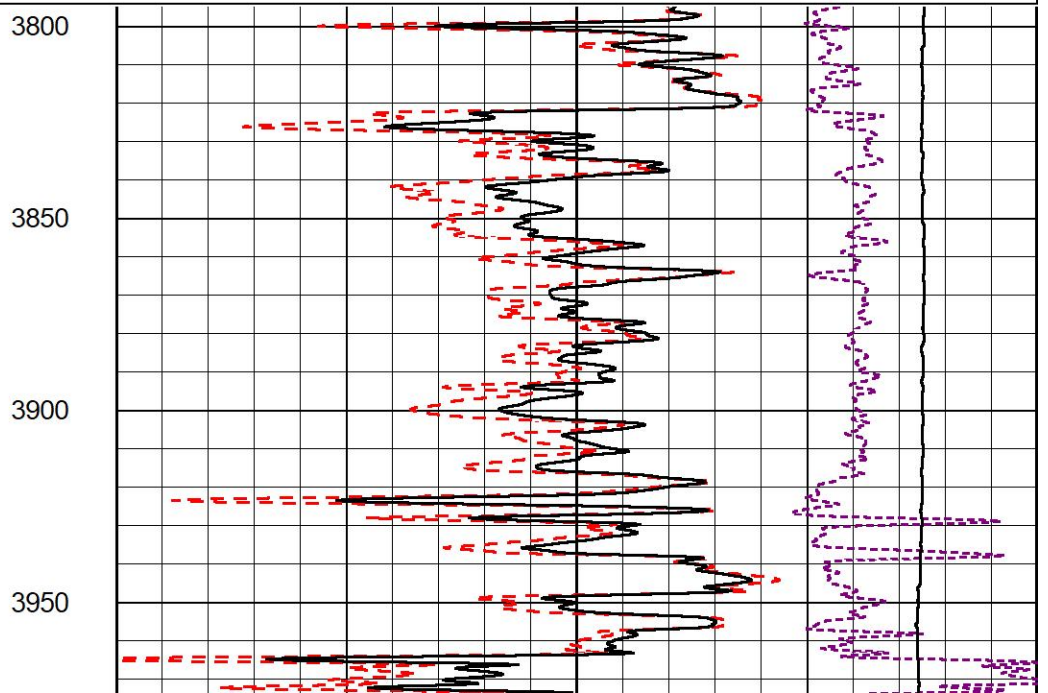
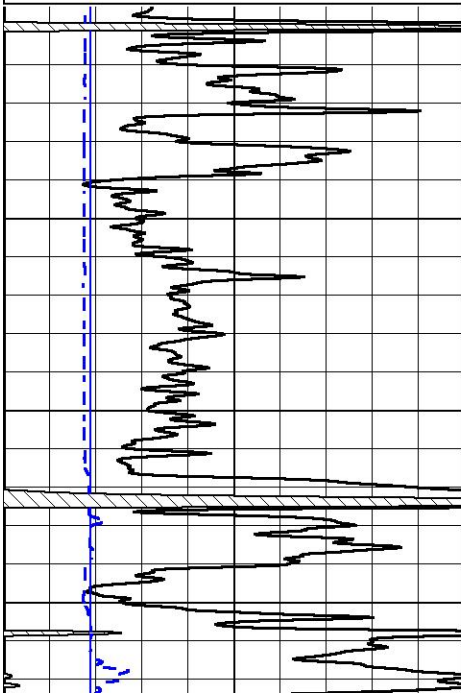
2" SCALE BULK DENSITY

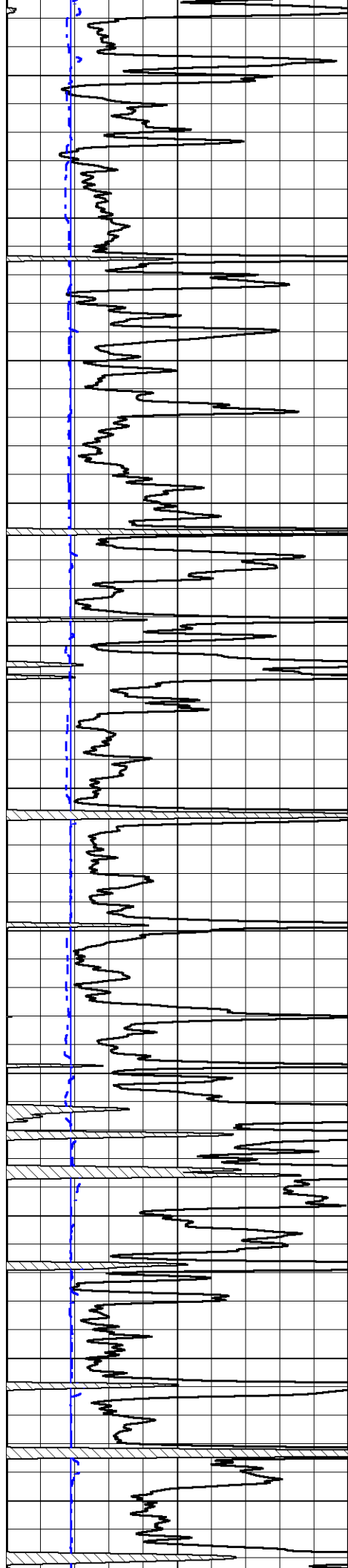
MAIN PASS

Database File am war_schroeder 1-9.db
 Dataset Pathname stkml/pass3.2
 Presentation Format _cdl
 Dataset Creation Mon Oct 02 18:00:51 2023
 Charted by Depth in Feet scaled 1:600

0	Gamma Ray (GAPI)	150
6	Caliper (in)	16

30	Compensated Density (pu)	-10
2	Bulk Density (g/cc)	3
15000	Line Tension (lb)	0
-0.25	Correction (g/cc)	0.25





4000

4050

4100

4150

4200

4250

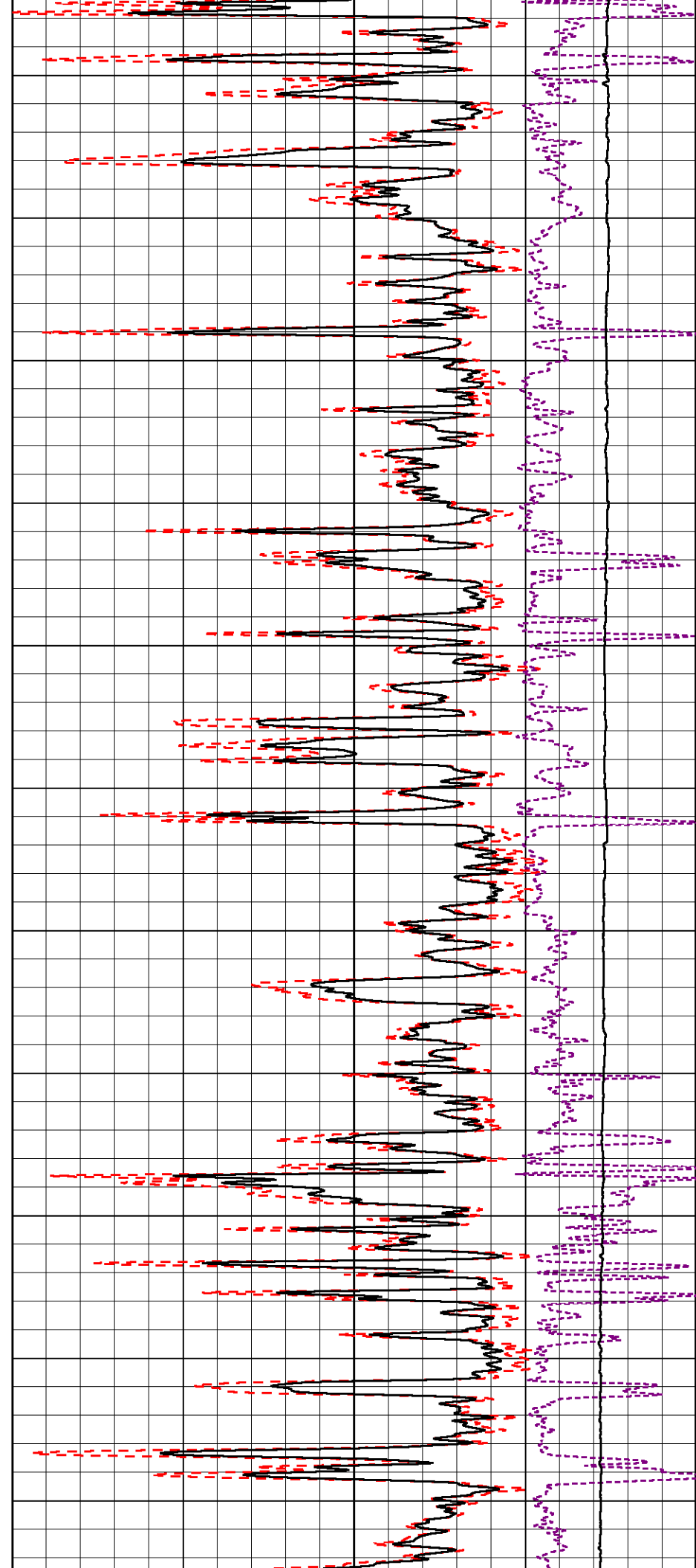
4300

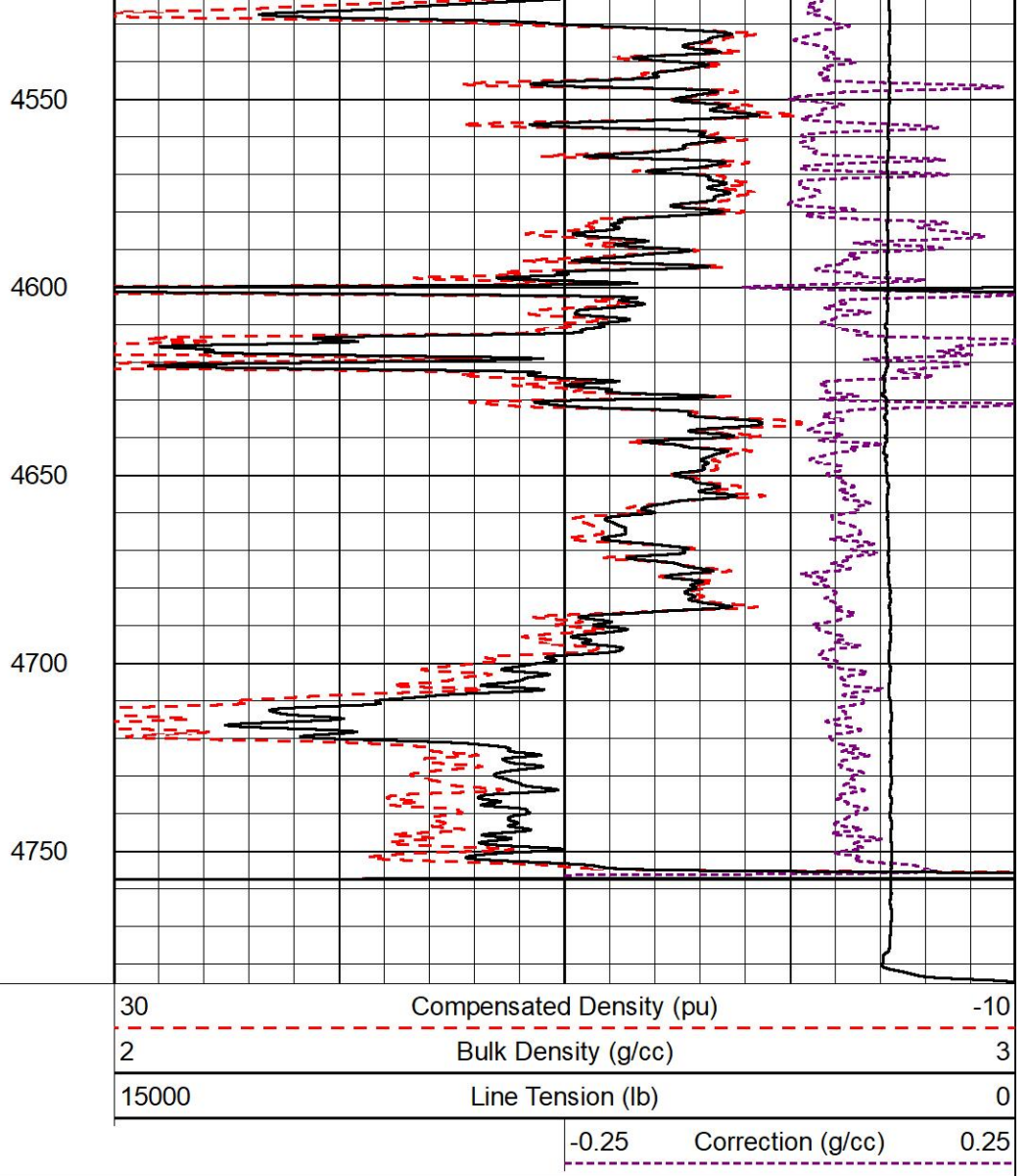
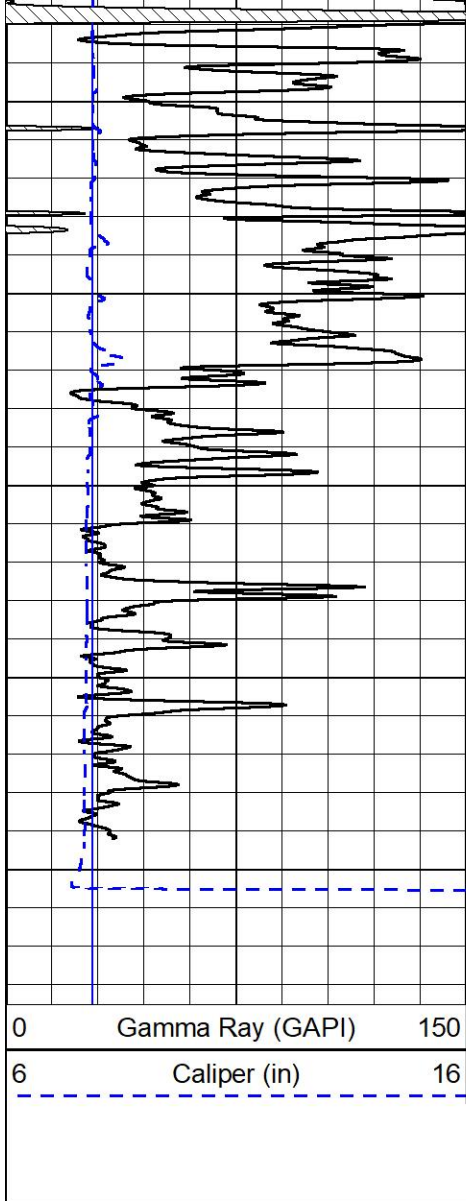
4350

4400

4450

4500

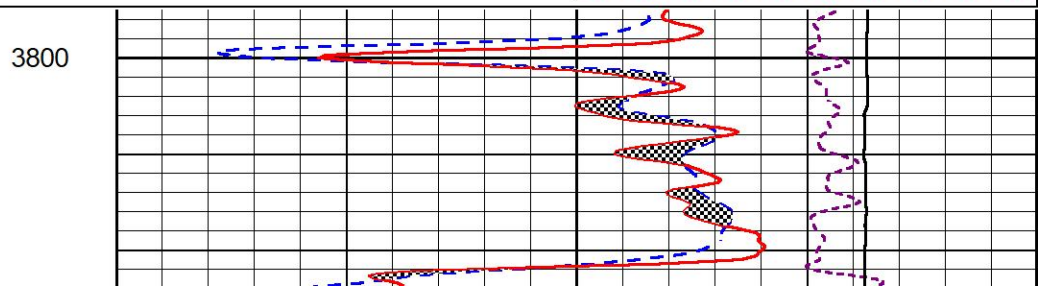
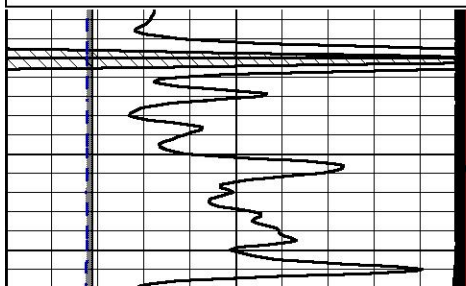
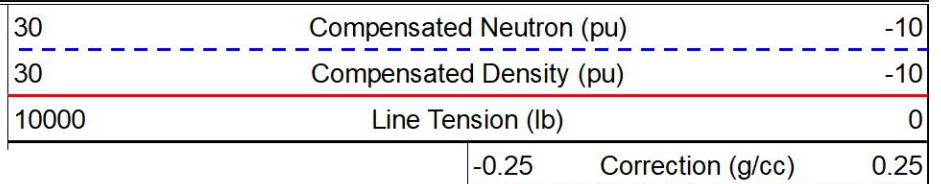
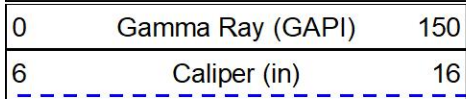


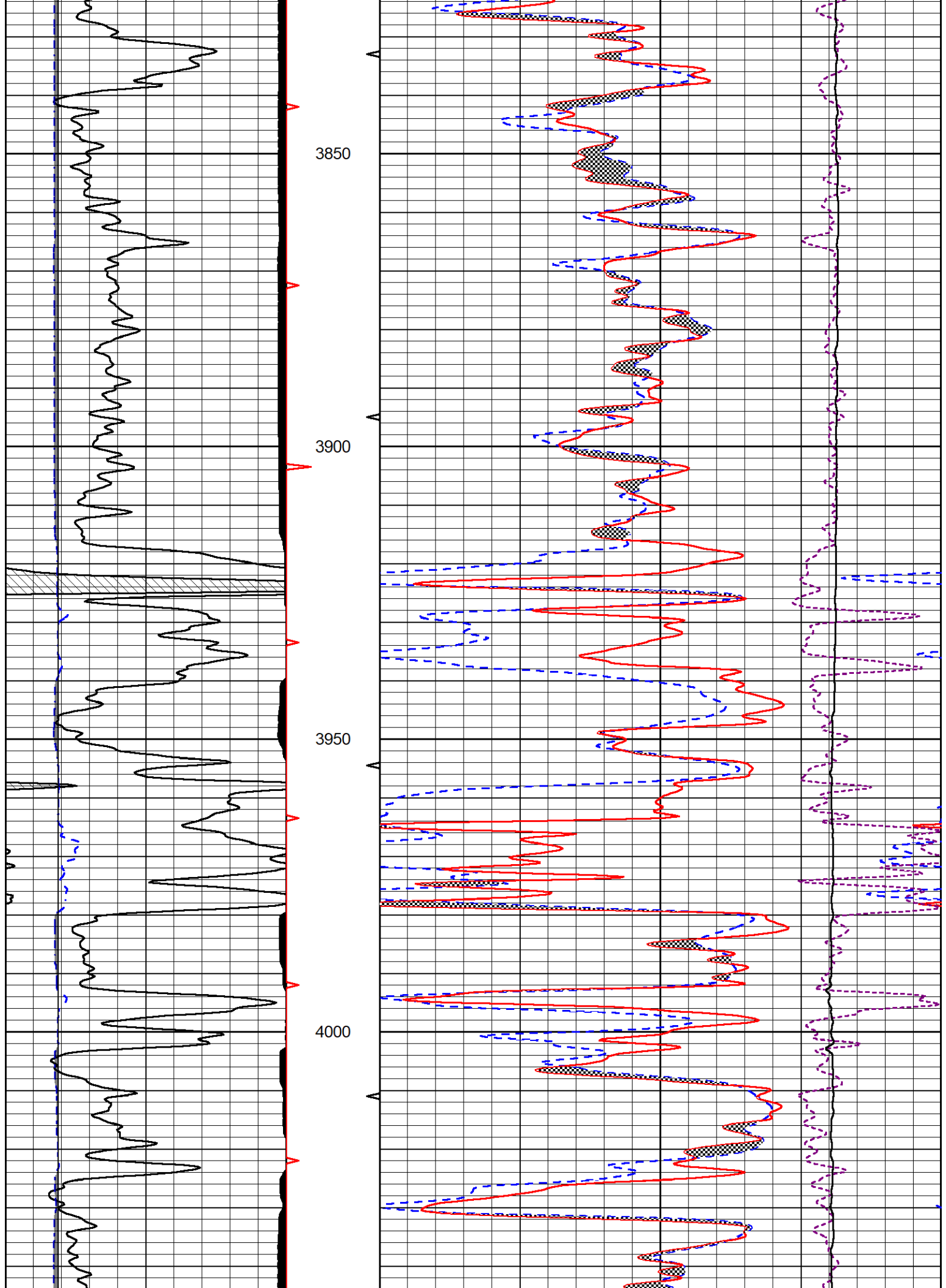


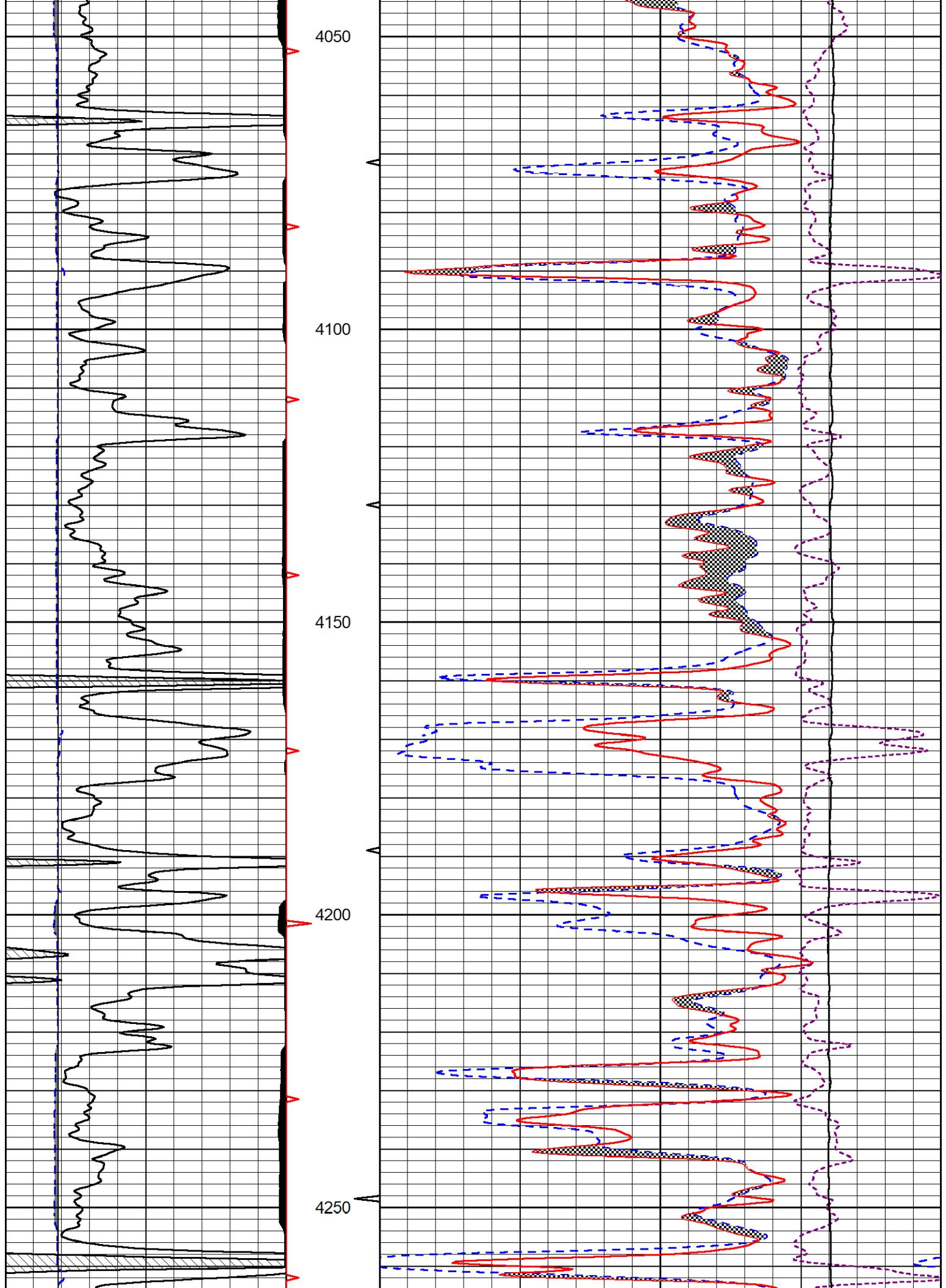
DETAIL SECTION

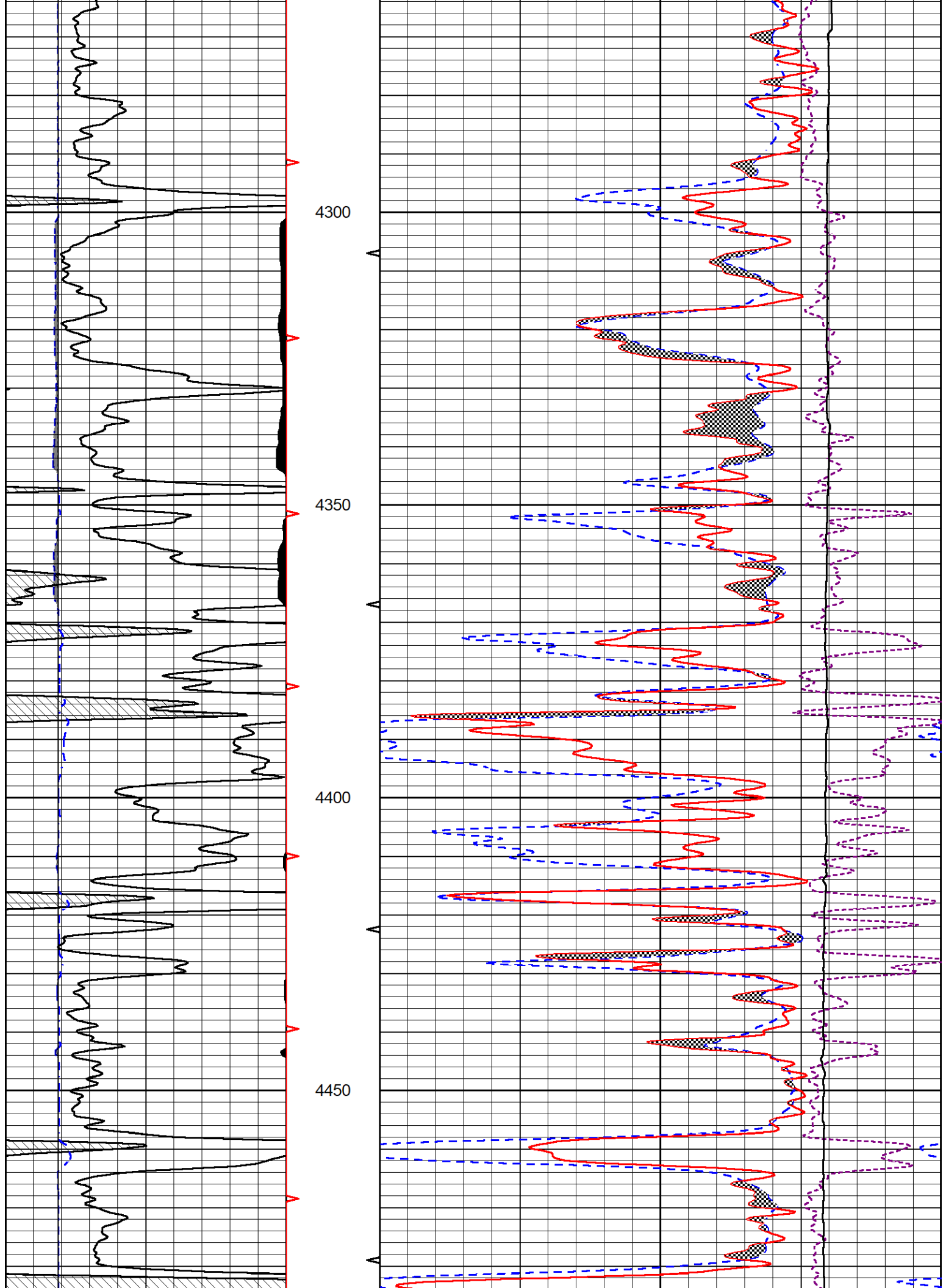
MAIN PASS

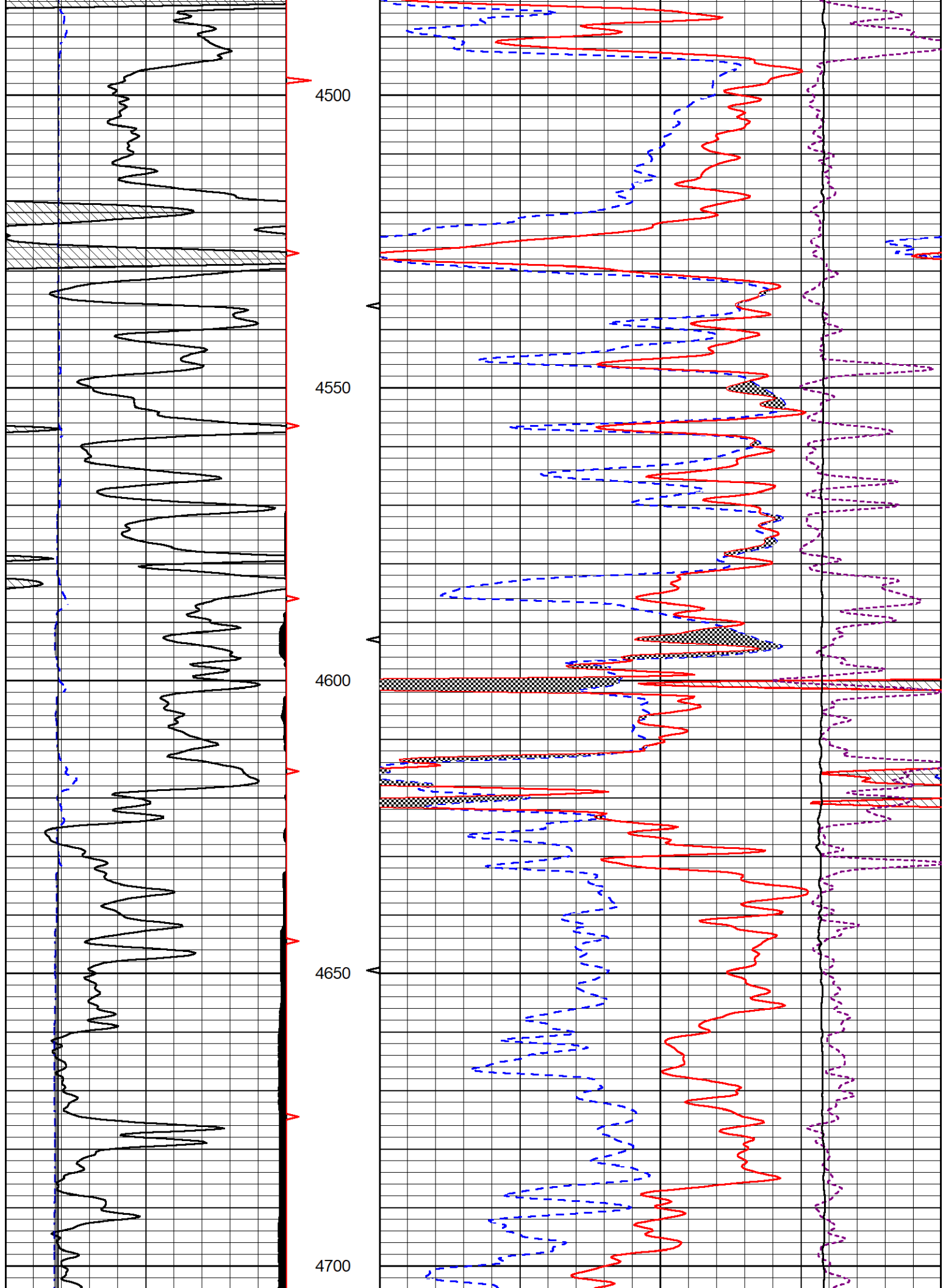
Database File am war_schroeder 1-9.db
 Dataset Pathname stkml/pass3.5
 Presentation Format _CNDLS~1
 Dataset Creation Mon Oct 02 18:01:02 2023
 Charted by Depth in Feet scaled 1:240

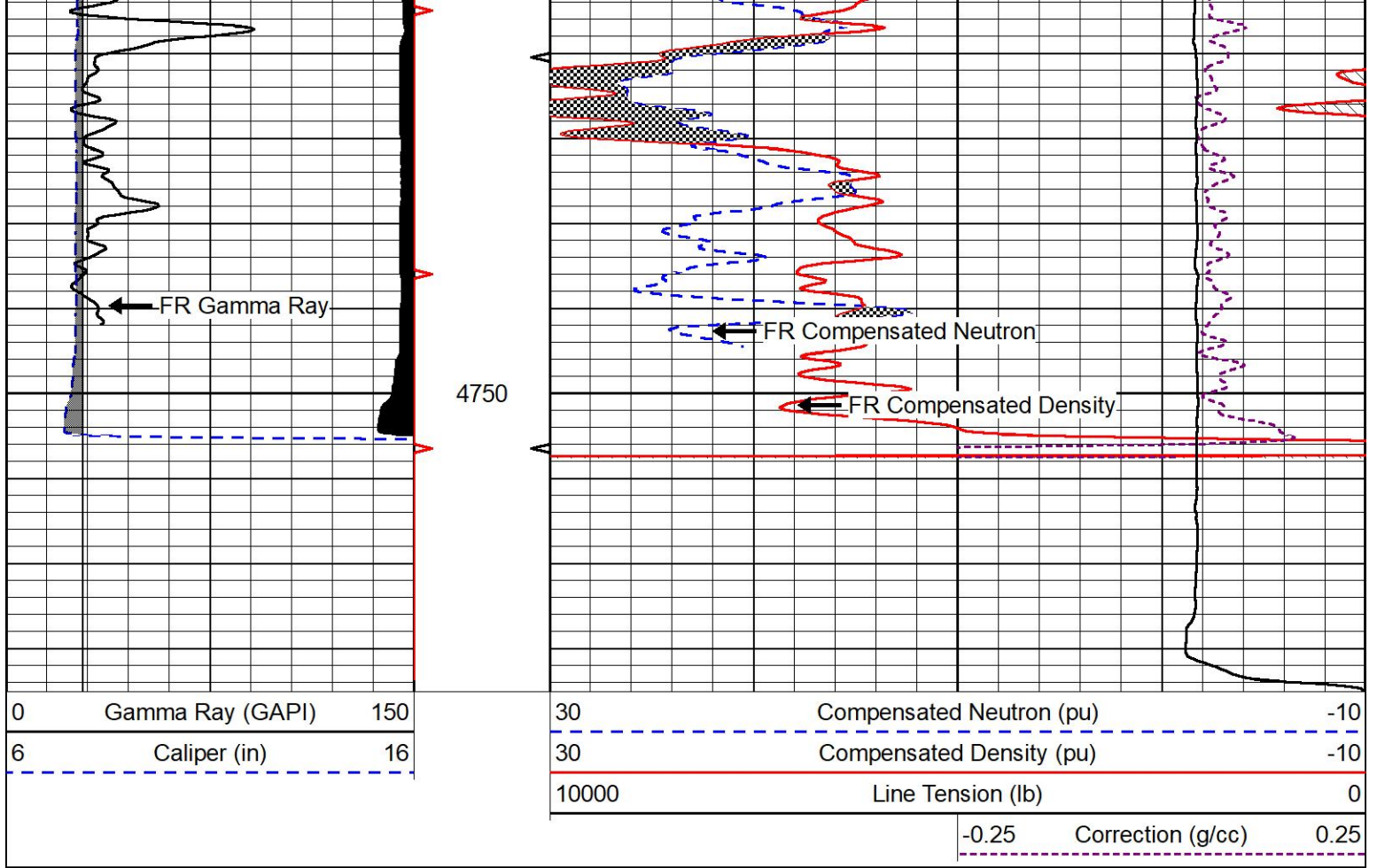








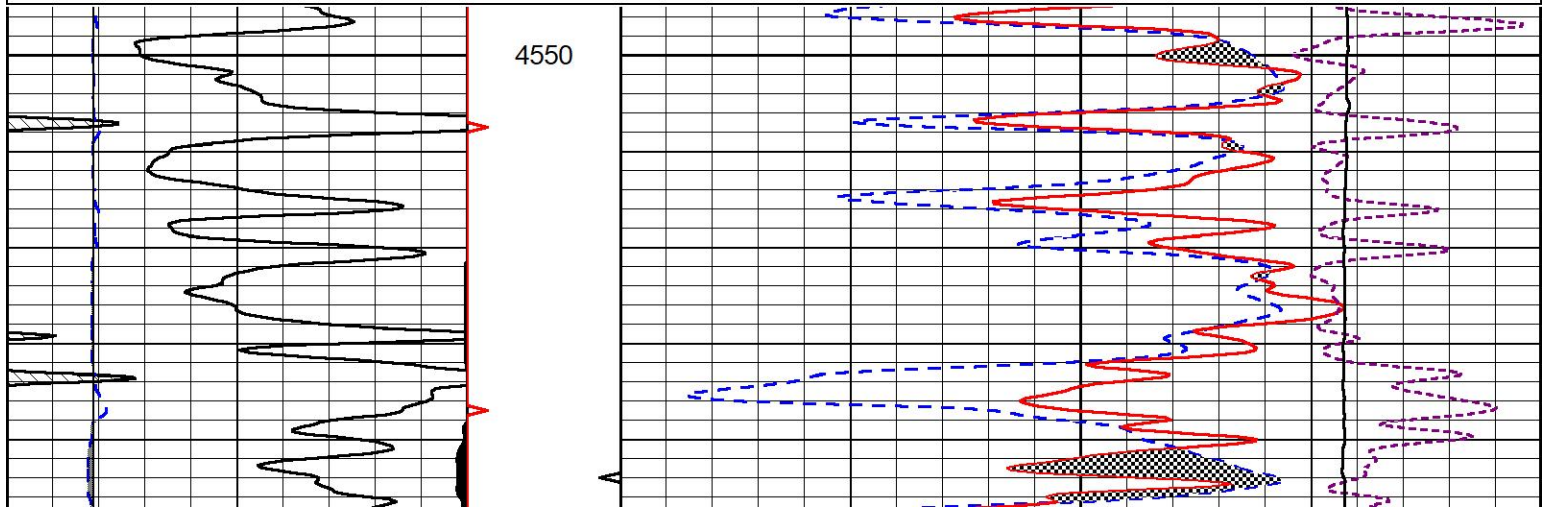
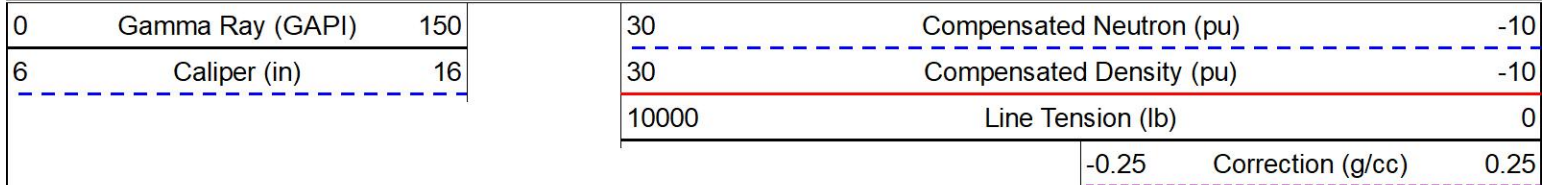


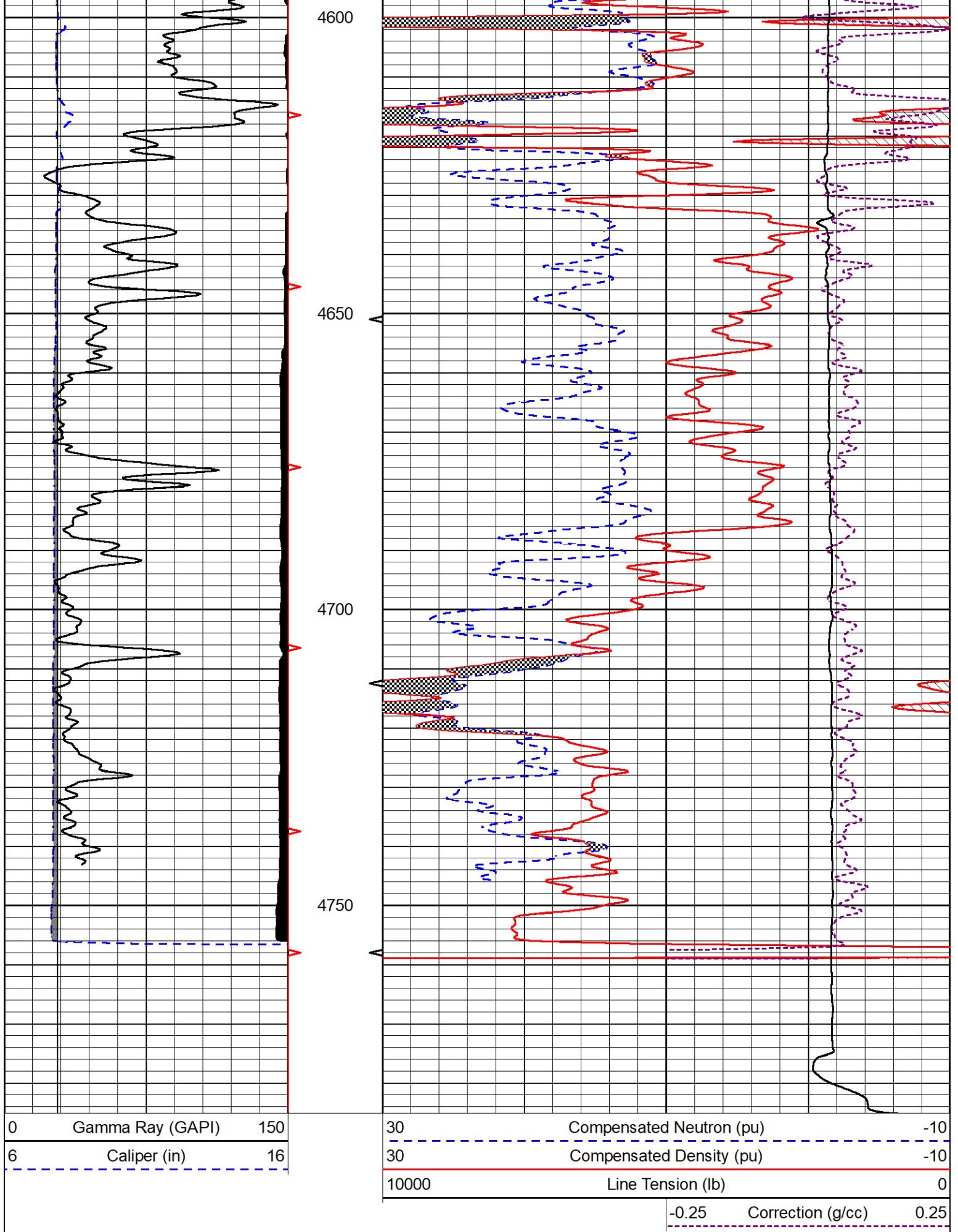


REPEAT SECTION

REPEAT PASS

Database File am war_schroeder 1-9.db
 Dataset Pathname stkml/pass2.1
 Presentation Format _CNDLS~1
 Dataset Creation Mon Oct 02 17:58:50 2023
 Charted by Depth in Feet scaled 1:240





Database File am war_schroeder 1-9.db
 Dataset Pathname stkml/pass3.5
 Dataset Creation Mon Oct 02 18:01:02 2023

Dual Induction Calibration Report

Serial-Model: 505 HT-M&W
 Surface Cal Performed: Fri Aug 11 21:22:17 2023

Loop:	Readings		References			Results	
	Air	Loop	Air	Loop		m	b
Deep	167.000	835.000	0.000	255.800	mmho/m	0.480	-42.000
Medium	1348.000	1348.000	0.000	255.800	mmho/m	0.390	-38.000

Microlog Calibration Report

Serial-Model: 401-PSIML
 Performed: Tue Aug 15 17:34:08 2023

	Readings		References			Results	
	Zero	Cal	Zero	Cal		m	b
Normal	0.0000	1.0000	0.0000	1.0000	Ohm-m	24000.0000	-1.5000
Inverse	0.0000	1.0000	0.0000	1.0000	Ohm-m	17000.0000	-0.5000
Caliper	1.0052	1.0858	5.0000	16.5000	in	50.0000	-44.4500

Compensated Density Calibration Report

Serial-Model: 303-03-M&W
 Source #: 21170B
 Master Calibration Performed: Wed Jun 21 06:11:17 2023

Master Calibration

	Density		Far Detector	Near Detector	
Magnesium	1.755	g/cc	4162.25	5570.06	cps
Aluminum	2.590	g/cc	913.18	3747.07	cps
Spine Angle = 75.35			Density/Spine Ratio = 0.533		
	Size		Reading		
Small Ring	4.00	in	1.17		
Large Ring	14.00	in	1.07		

Compensated Neutron Calibration Report

Serial Number: 210
 Tool Model: M&W

CALIBRATION

Detector	Readings	Target	Normalization
Short Space	6240.00 cps	1000.00 cps	1.6025
Long Space	460.00 cps	1000.00 cps	1.9500

Gamma Ray Calibration Report

Serial Number: 105
Tool Model: M&W
Performed: Wed Aug 30 12:31:03 2023

Calibrator Value: 500.0 GAPI

Background Reading: 24.0 cps
Calibrator Reading: 637.0 cps

Sensitivity: 0.6500 GAPI/cps



Company American Warrior, Inc.
Well Schroeder #1-9
Field Wildcat
County Hodgeman
State Kansas