



MIDWEST WIRELINE

MICRORESISTIVITY LOG

Company American Warrior, Inc.
 Well Schroeder #1-9
 Field Wildcat
 County Hodgeman
 State Kansas

Company American Warrior, Inc.
 Well Schroeder #1-9
 Field Wildcat
 County Hodgeman
 State Kansas

Location: API #: 15-083-22032-00-00
 1379 FSL & 611 FWL
 SEC 9 TWP 23S RGE 23W
 Elevation 2341
 Other Services
 CNL/CDL
 DIL/BHCS
 K.B. 2354
 D.F. G.L. 2341

Date	10/2/2023
Run Number	One
Depth Driller	4775
Depth Logger	4781
Bottom Logged Interval	4780
Top Log Interval	3800
Casing Driller	8:625 @ 647
Casing Logger	647
Bit Size	7.875
Type Fluid in Hole	Chemical
Salinity, ppm CL	5700
Density / Viscosity	9.3 56
pH / Fluid Loss	9.5 10.0
Source of Sample	FLOWLINE
Rm @ Meas. Temp	0.40 @ 85
Rmt @ Meas. Temp	0.30 @ 85
Rmc @ Meas. Temp	0.54 @ 85
Source of Rmf / Rmc	CHARTS
Rm @ BHT	0.27 @ 124
Operating Rig Time	4 Hours
Max Rec. Temp. F	124
Equipment Number	P-108
Location	HAYS
Recorded By	D. Schmidt
Witnessed By	Kevin Timson

<<< Fold Here >>>

All interpretations are opinions based on inferences from electrical or other measurements and Midwest Wireline LLC cannot and does not guarantee the accuracy or correctness of any interpretation, and Midwest Wireline LLC will not be liable or responsible for any loss, costs, damages, or expenses incurred or sustained by anyone resulting from any interpretation made by any of our officers, agents or employees.

Comments
 N/A DENOTES NOT AVAILABLE OR NON-APPLICABLE.


Jetmore,
 East to 219 Rd, 2 South, 1 1/2 East,
 North and West into

Log Measured From: Kelly Bushing 13 Ft. Above Permanent Datum

THANK YOU FOR USING MIDWEST WIRELINE LLC
 785-625-3858

Your Midwest Wireline Crew	This Log Record Was Witnessed By
Engineer: D. Schmidt	Primary Witness: Kevin Timson
Operator:	Secondary Witness:
Operator:	Secondary Witness:
Operator:	Secondary Witness:

Operator	Offset (ft)	Substrate	Description	Length (ft)	C.D. (in)	Weight (lb)
----------	-------------	-----------	-------------	-------------	-----------	-------------

Sensor	Offset (ft)	Schematic	Description	Length (ft)	O.D. (in)	Weight (lb)
GR	40.33		GR-M&W (105)	3.00	3.50	50.00
CNLSC CNSSC	37.23 36.48		CNT-M&W (210)	5.00	3.50	100.00
LSD DCAL SSD	28.18 28.17 27.68		CDL-M&W (303-03)	8.50	4.00	250.00
ML-PSIML (401)			7.58	4.00	65.00	
MCAL MI MN	19.58 19.58 19.58					
RLL3F RLL3	15.50 15.50					
DIL-M&W (505 HT)			18.25	3.50	220.00	
CILD	8.33					
CILM	4.50					
SP	0.20					

Dataset: am war_schroeder 1-9.db: field/well/stkml/pass3.5
 Total length: 42.33 ft
 Total weight: 685.00 lb
 O.D.: 4.00 in

Log Variables

DatabaseC:\ProgramData\Warrior\Data\am war_schroeder 1-9.db
 Dataset field/well/stkml/pass3.5/_vars_

Top - Bottom

A	BOREID in	BOTTEMP degF	CASEOD in	CASETHCK in	FLUIDDEN g/cc	M	MATRXDEN g/cc
1	7.875	124	5.5	0	1	2	2.71
NPORSEL	PERFS	SNDERR mmho/m	SNDERRM mmho/m	SPSHIFT mV	SRFTEMP degF	SZCOR	TDEPTH ft
Limestone	No	-18	-25	322	80	Off	4781

Variable Description

A : Cement Factor (a)
 BOREID : Borehole I.D.
 BOTTEMP : Bottom Hole Temperature
 CASEOD : Casing O.D.
 CASETHCK : Casing Thickness
 FLUIDDEN : Fluid Density
 M : Cement Exp (m)
 MATRXDEN : Matrix Density

NPORSEL : Neutron Porosity Curve Select
 PERFS : Perforation Flag
 SNDERR : Deep Sonde Error Correction
 SNDERRM : Medium Sonde Error Correction
 SPSHIFT : S.P. Baseline Offset
 SRFTEMP : Surface Temperature
 SZCOR : CN Size Cor. ?
 TDEPTH : Total Depth



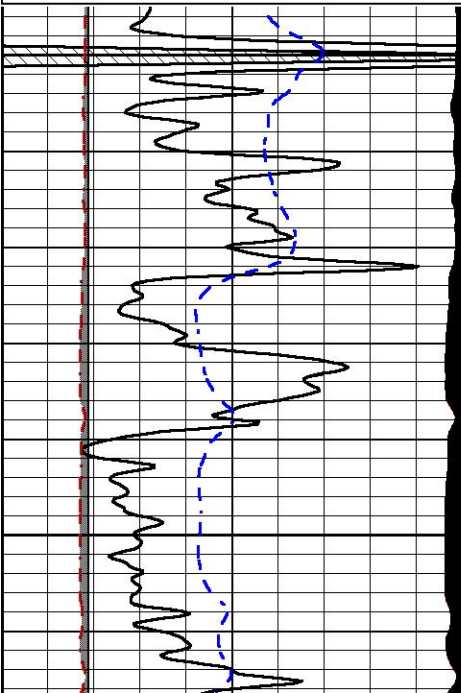
DETAIL SECTION

MAIN PASS

Database File am war_schroeder 1-9.db
 Dataset Pathname stkml/pass3.1
 Presentation Format _micro
 Dataset Creation Mon Oct 02 18:47:17 2023
 Charted by Depth in Feet scaled 1:240

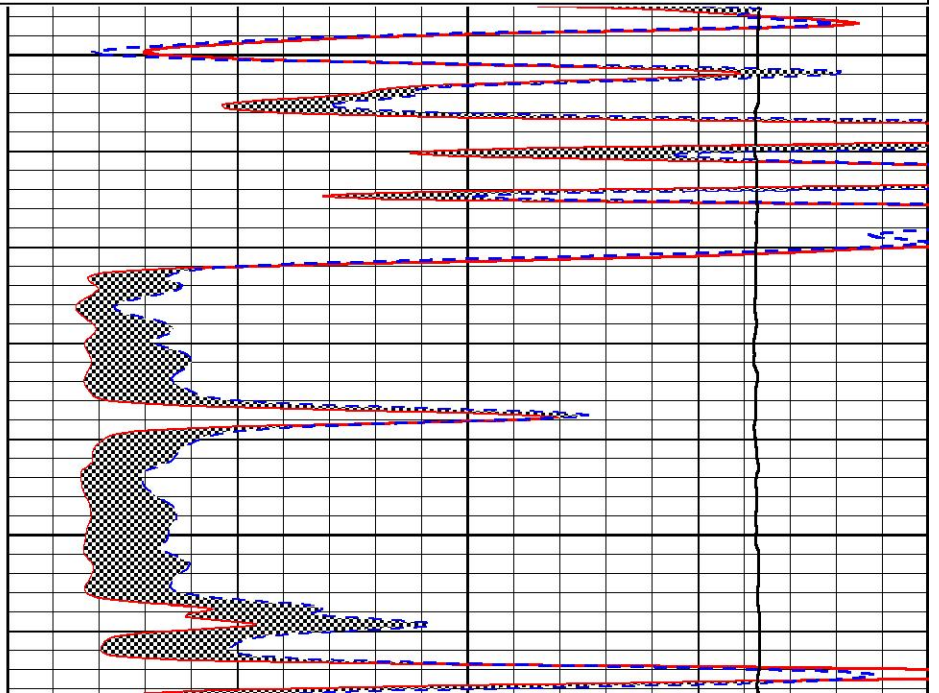
0	Gamma Ray (GAPI)	150
6	Micro Caliper (in)	16
2.875	mcal (in)	7.875
-200	SP (mV)	0

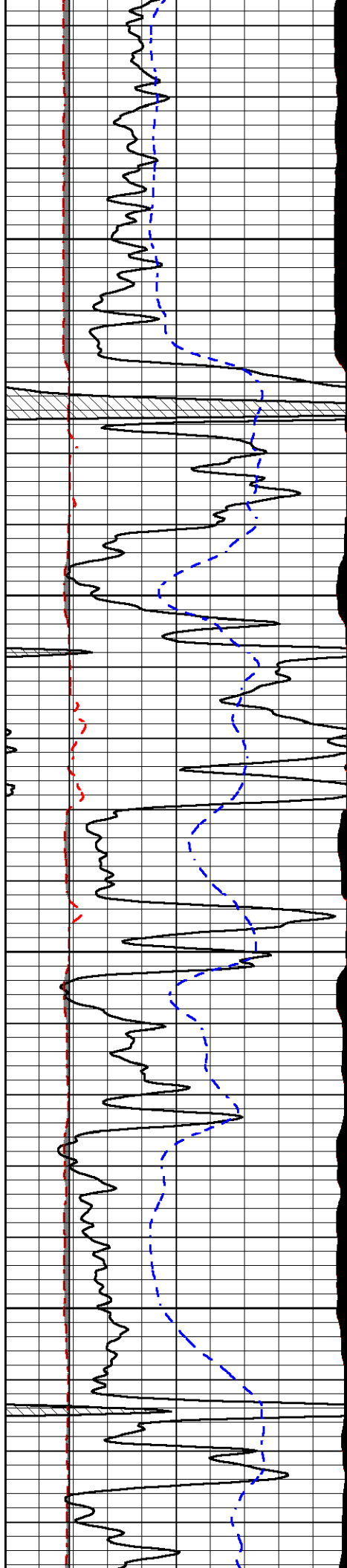
0	Micro Inverse 1 X 1 (Ohm-m)	40
0	Micro Normal 2" (Ohm-m)	40
10000	Line Weight (lb)	0



3800

3850



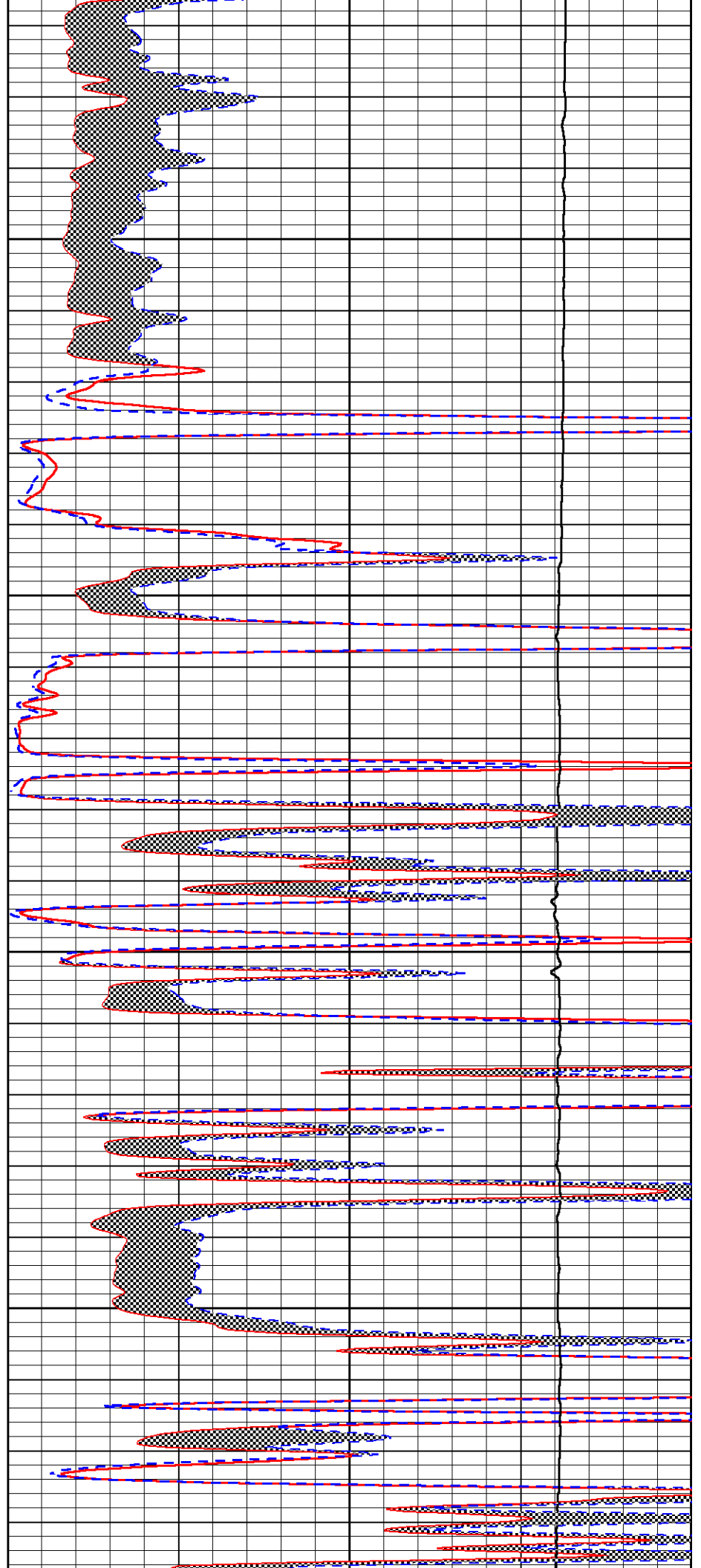


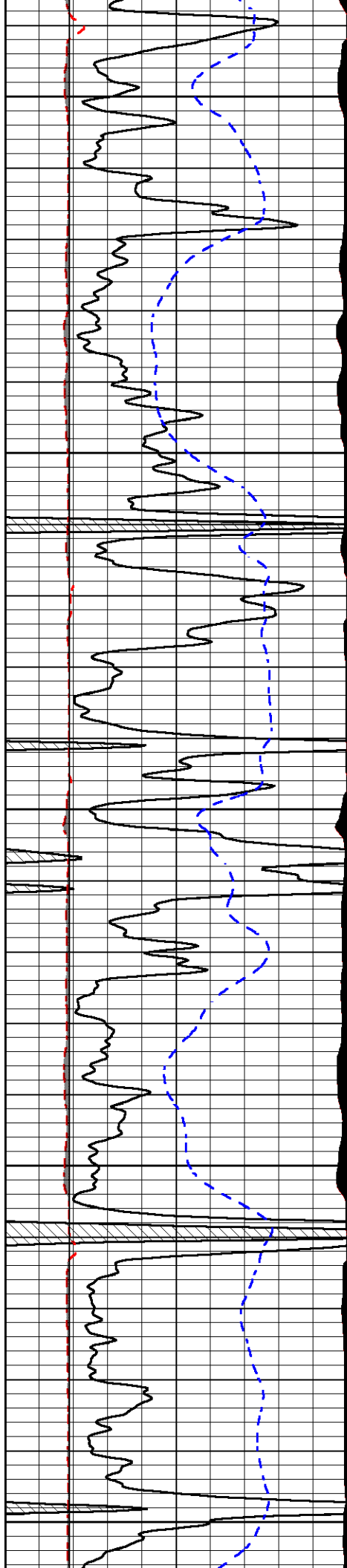
3900

3950

4000

4050





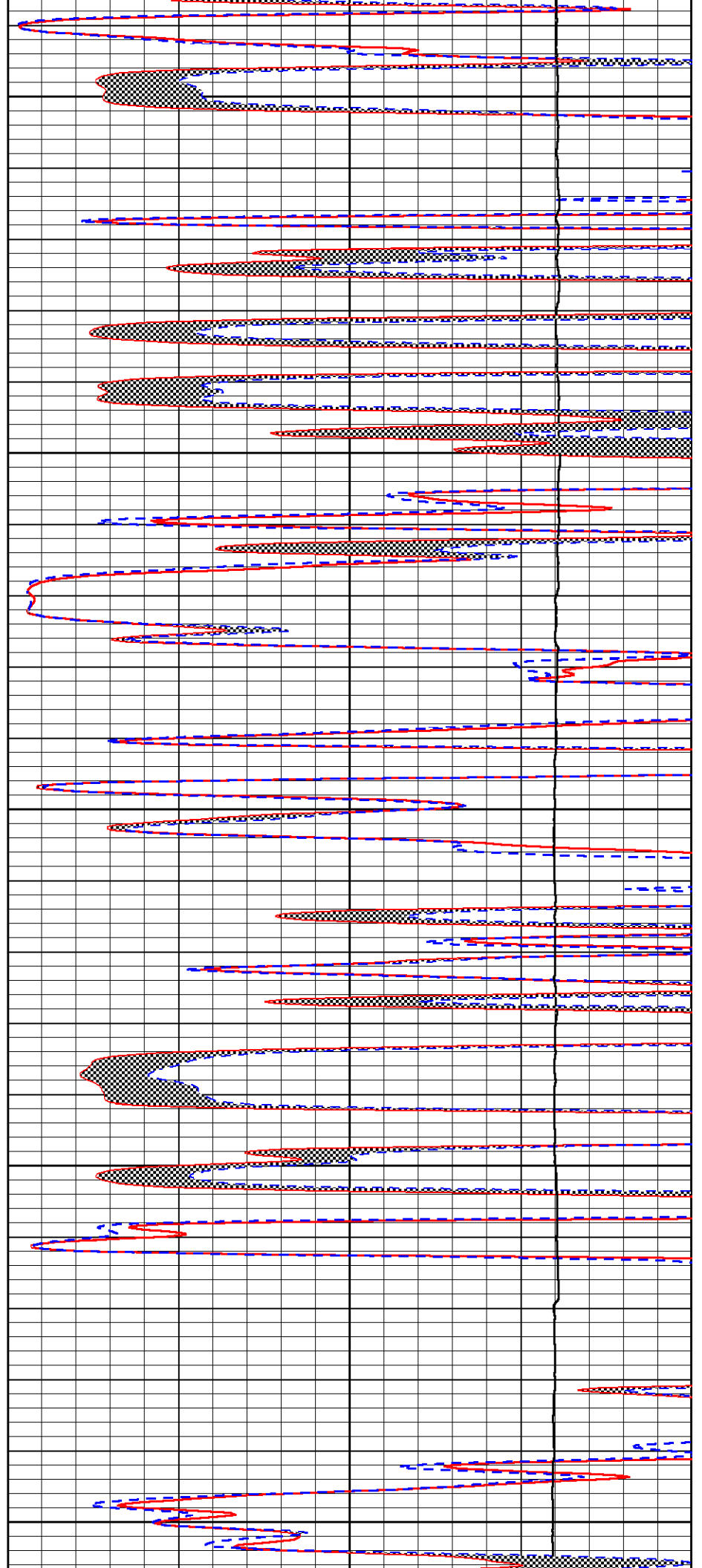
4100

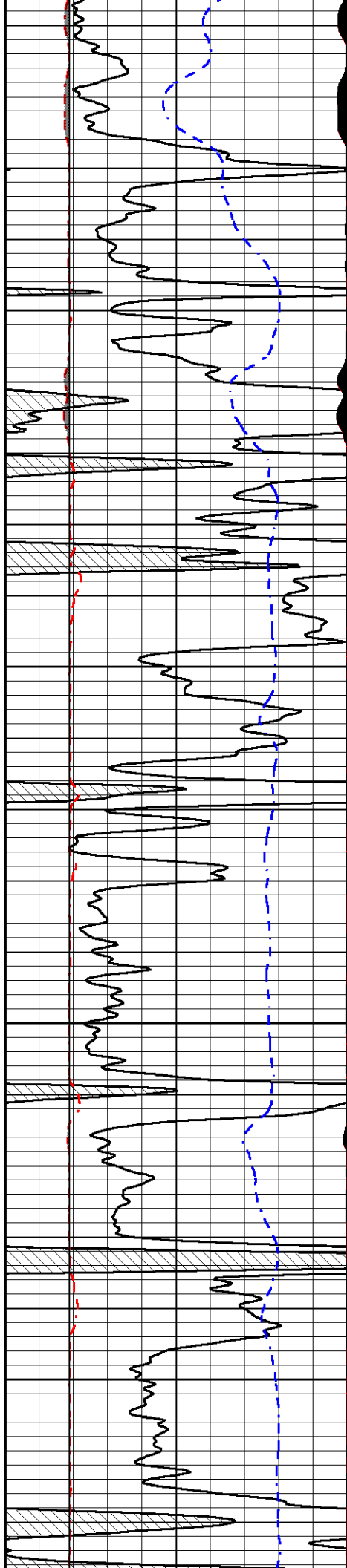
4150

4200

4250

4300



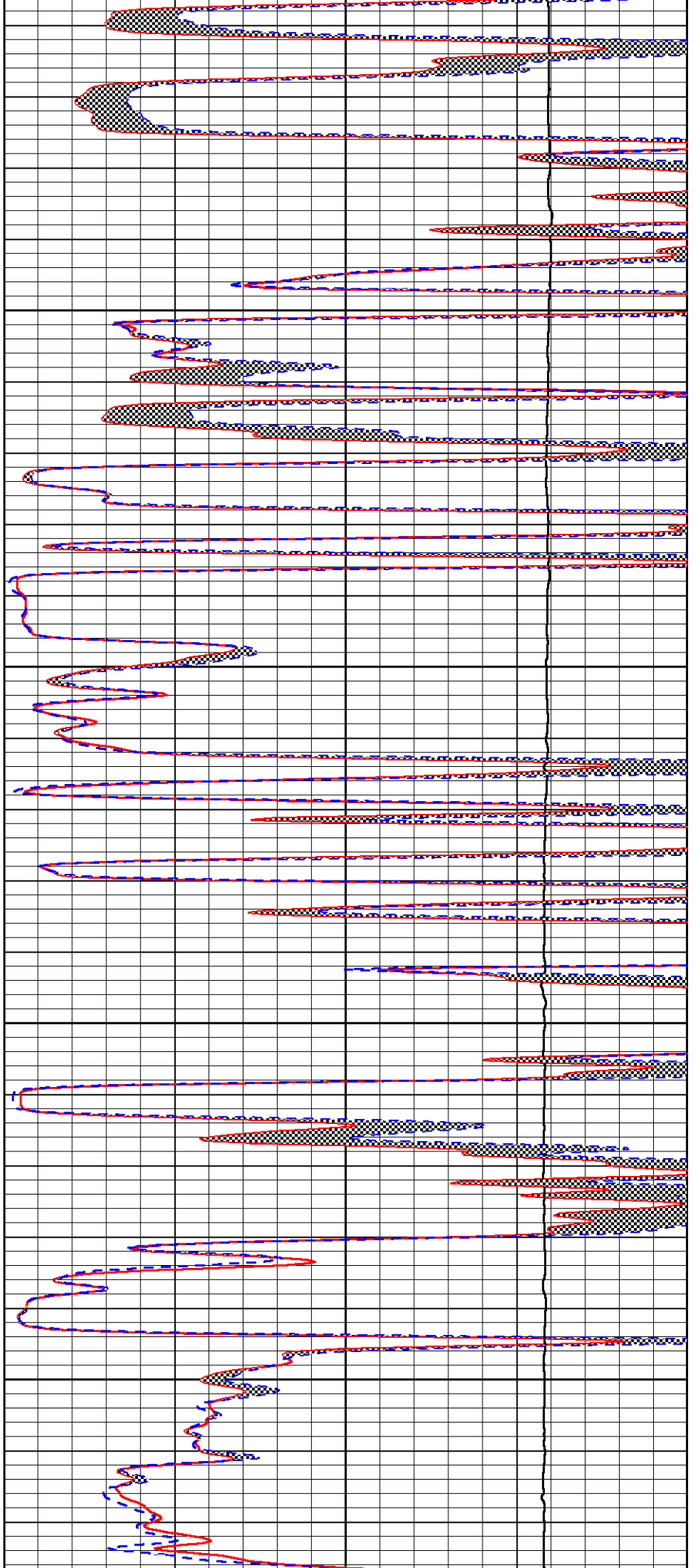


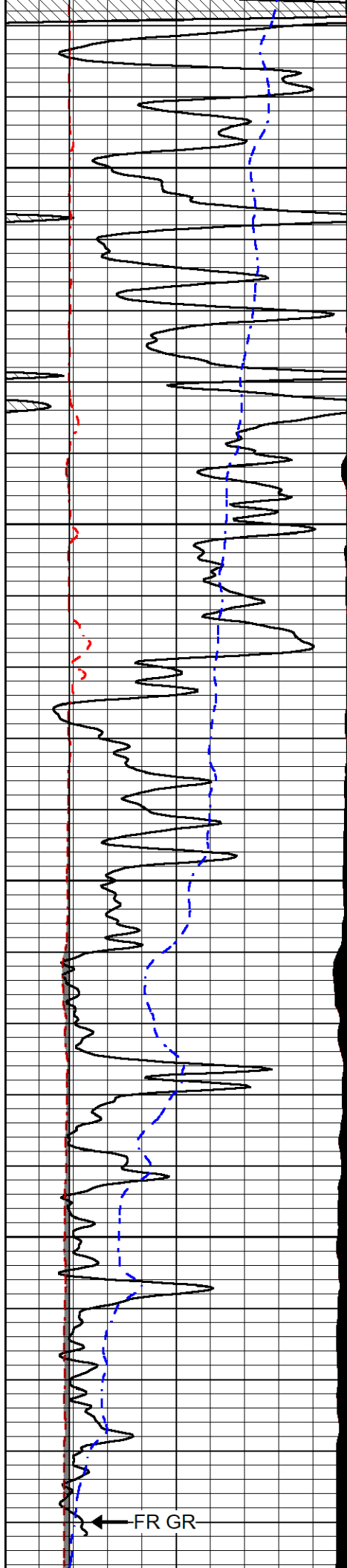
4350

4400

4450

4500



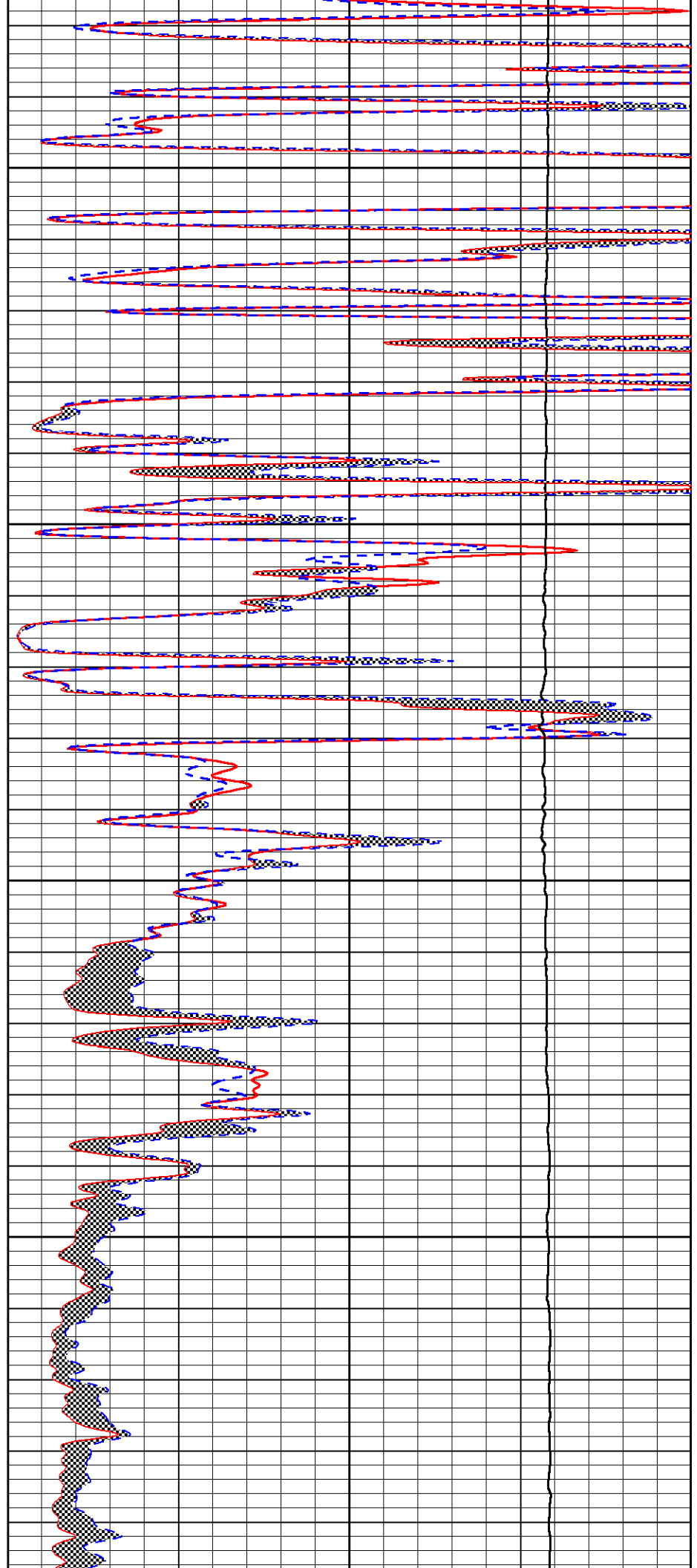


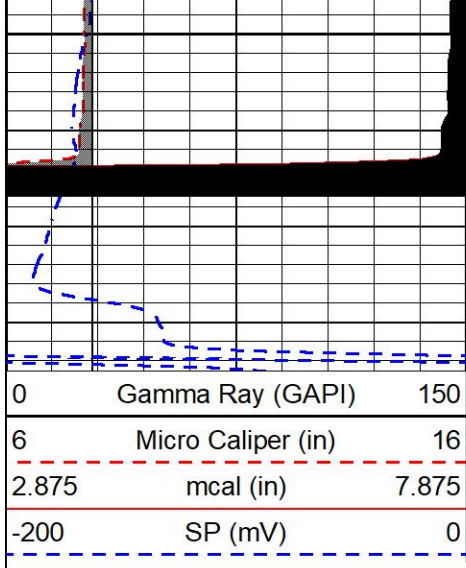
4550

4600

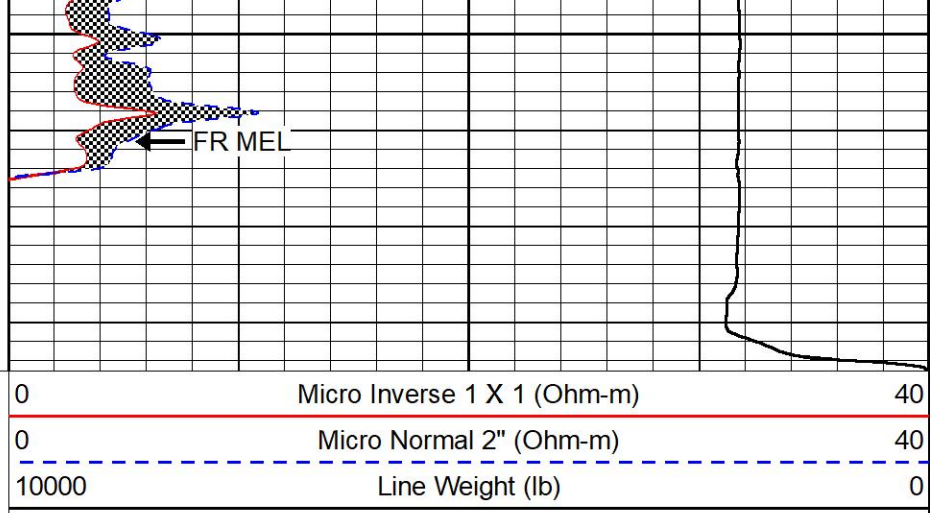
4650

4700





4750

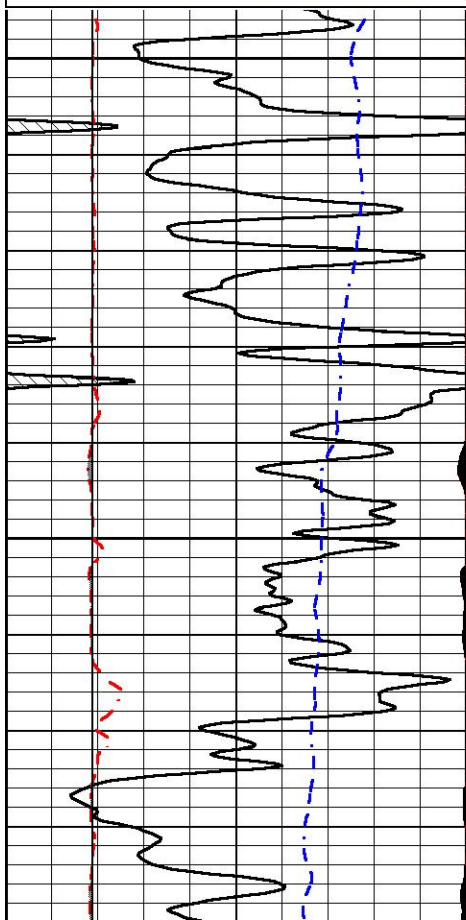
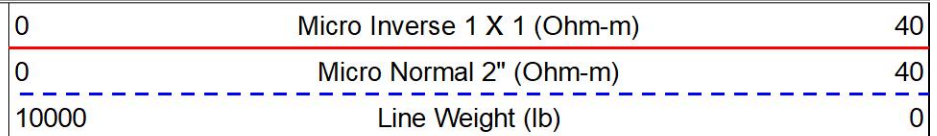
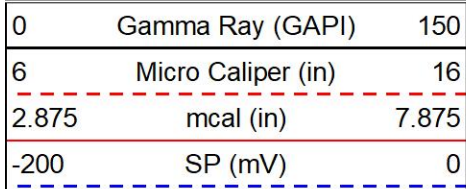


MIDWEST WIRELINE

REPEAT SECTION

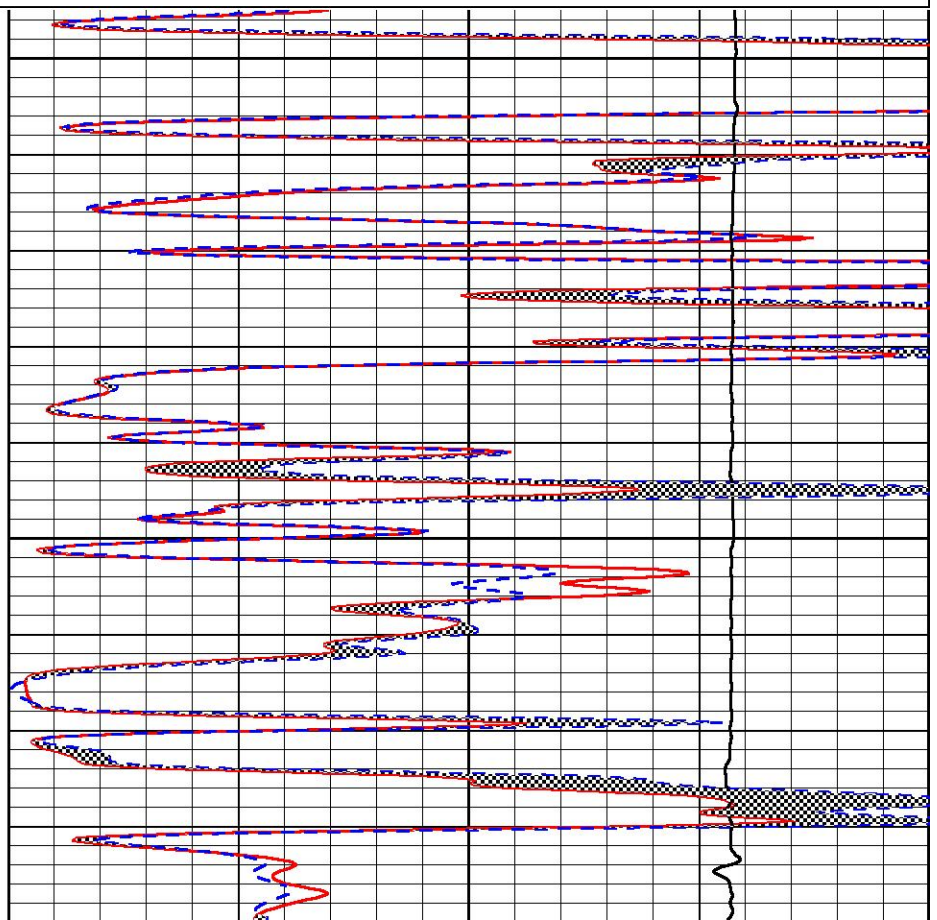
REPEAT PASS

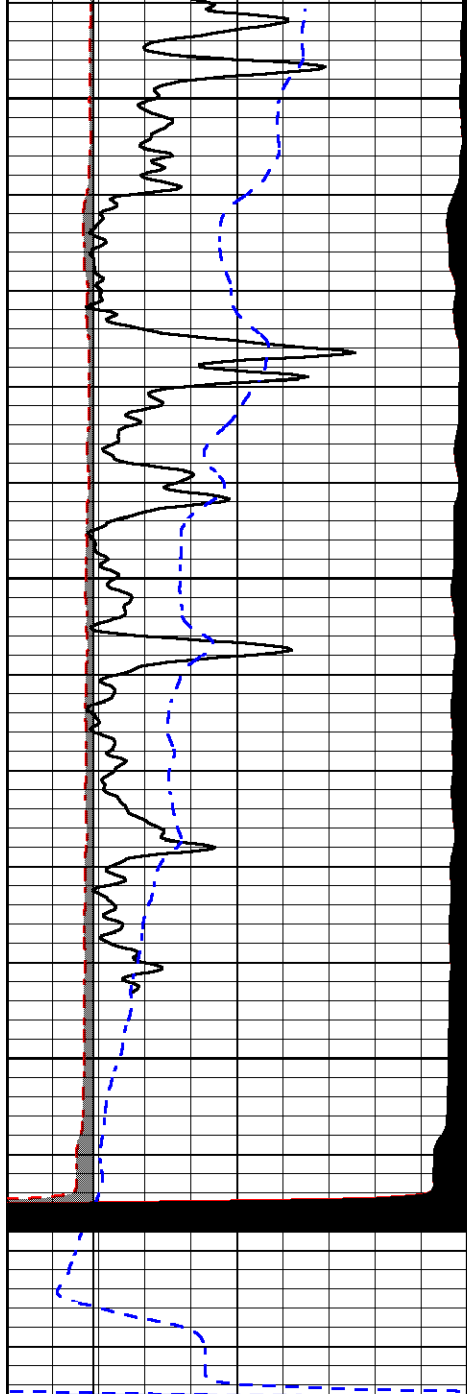
Database File am war_schroeder 1-9.db
 Dataset Pathname stkml/pass2.1
 Presentation Format _micro
 Dataset Creation Mon Oct 02 17:58:50 2023
 Charted by Depth in Feet scaled 1:240



4550

4600



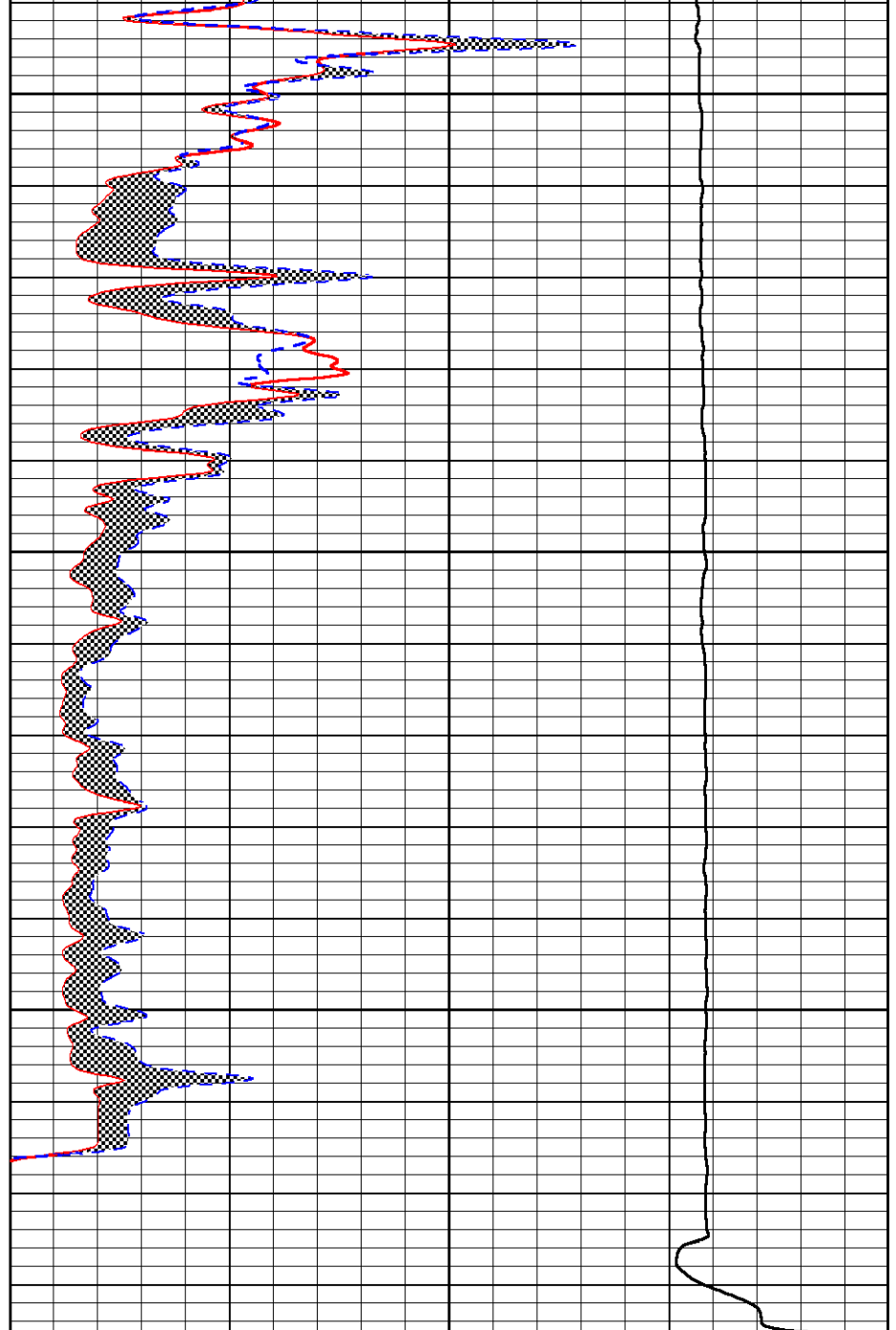


4650

4700

4750

0	Gamma Ray (GAPI)	150
6	Micro Caliper (in)	16
2.875	mcal (in)	7.875
-200	SP (mV)	0



0	Micro Inverse 1 X 1 (Ohm-m)	40
0	Micro Normal 2" (Ohm-m)	40
10000	Line Weight (lb)	0

Calibration Report

Database File am war_schroeder 1-9.db
 Dataset Pathname stkml/pass3.5
 Dataset Creation Mon Oct 02 18:01:02 2023

Dual Induction Calibration Report

Serial-Model: 505 HT-M&W
 Surface Cal Performed: Fri Aug 11 21:22:17 2023

Readings		References		Results		
Loop:	Air	Loop	Air	Loop	m	b

Deep	167.000	835.000	0.000	255.800	mmho/m	0.480	-42.000
Medium	1348.000	1348.000	0.000	255.800	mmho/m	0.390	-38.000

Microlog Calibration Report

Serial-Model:	401-PSIML
Performed:	Tue Aug 15 17:34:08 2023

	Readings		References			Results	
	Zero	Cal	Zero	Cal		m	b
Normal	0.0000	1.0000	0.0000	1.0000	Ohm-m	24000.0000	-1.5000
Inverse	0.0000	1.0000	0.0000	1.0000	Ohm-m	17000.0000	-0.5000
Caliper	1.0052	1.0858	5.0000	16.5000	in	50.0000	-44.4500

Compensated Density Calibration Report

Serial-Model:	303-03-M&W
Source #:	21170B
Master Calibration Performed:	Wed Jun 21 06:11:17 2023

Master Calibration

	Density		Far Detector	Near Detector	
Magnesium	1.755	g/cc	4162.25	5570.06	cps
Aluminum	2.590	g/cc	913.18	3747.07	cps
Spine Angle = 75.35		Density/Spine Ratio = 0.533			
	Size		Reading		
Small Ring	4.00	in	1.17		
Large Ring	14.00	in	1.07		

Compensated Neutron Calibration Report

Serial Number:	210
Tool Model:	M&W

CALIBRATION

Detector	Readings	Target	Normalization
Short Space	6240.00 cps	1000.00 cps	1.6025
Long Space	460.00 cps	1000.00 cps	1.9500

Gamma Ray Calibration Report

Serial Number:	105	
Tool Model:	M&W	
Performed:	Wed Aug 30 12:31:03 2023	
Calibrator Value:	500.0	GAPI
Background Reading:	24.0	cps
Calibrator Reading:	637.0	cps
Sensitivity:	0.6500	GAPI/cps



Company	American Warrior, Inc.
Well	Schroeder #1-9
Field	Wildcat
County	Hodgeman
State	Kansas