



MIDWEST WIRELINE

DUAL INDUCTION

Company American Warrior, Inc
 Well Shriwise #1-35
 Field Jetmore
 County Hodgeman State Kansas

Company American Warrior, Inc
 Well Shriwise #1-35
 Field Jetmore
 County Hodgeman
 State Kansas

Location: API #: 15-083-22028-00-00
 2120 FNL & 1076 FEL
 SEC 35 TWP 22S RGE 24W
 Permanent Datum Ground Level Elevation 2316
 Log Measured From Kelly Bushing
 Drilling Measured From Kelly Bushing
 Other Services
 CNL/CDL
 MEL/BHCS
 Elevation
 K.B. 2324
 D.F.
 G.L. 2316

Date	07/07/2023
Run Number	One
Depth Driller	4695
Depth Logger	4694
Bottom Logged Interval	4693
Top Log Interval	200
Casing Driller	8.625 @ 226
Casing Logger	226
Bit Size	7.875
Type Fluid in Hole	Chemical Mud
Salinity, ppm CL	6700
Density / Viscosity	9.0 49
pH / Fluid Loss	11.0 9.2
Source of Sample	Flowline
Rm @ Meas. Temp	0.75 @ 72
Rmt @ Meas. Temp	0.56 @ 72
Rmc @ Meas. Temp	1.01 @ 72
Source of Rmf / Rmc	Charts
Rm @ BHT	0.44 @ 123
Operating Rig Time	5 Hours
Max Rec. Temp. F	123
Equipment Number	P-24
Location	Hays
Recorded By	Justin Trout
Witnessed By	Jason Alm

<<< Fold Here >>>

All interpretations are opinions based on inferences from electrical or other measurements and Midwest Wireline LLC cannot and does not guarantee the accuracy or correctness of any interpretation, and Midwest Wireline LLC will not be liable or responsible for any loss, costs, damages, or expenses incurred or sustained by anyone resulting from any interpretation made by any of our officers, agents or employees.

Comments

N/A DENOTES NOT AVAILABLE OR NON-APPLICABLE.

Jetmore, Ks,
 1 West, 3/4 North
 West and South into at tank battery

Log Measured From: Kelly Bushing 8 Ft. Above Permanent Datum

THANK YOU FOR USING MIDWEST WIRELINE LLC
 785-625-3858

Your Midwest Wireline Crew

Engineer: Justin Trout
 Operator:
 Operator:
 Operator:

This Log Record Was Witnessed By

Primary Witness: Jason Alm
 Secondary Witness:
 Secondary Witness:
 Secondary Witness:

Sensor	Offset (ft)	Schematic	Description	Length (ft)	O.D. (in)	Weight (lb)
GR	40.33		GR-M&W (105)	3.00	3.50	50.00
CNLSC CNSSC	37.23 36.48		CNT-M&W (207-MW)	5.00	3.50	100.00
LSD DCAL SSD	28.18 28.17 27.68		CDL-M&W (307-11)	8.50	4.00	250.00
MCAL MI MN	19.58 19.58 19.58		ML-PSIML (401)	7.58	4.00	65.00
RLL3F RLL3	15.50 15.50					
CILD	8.33		DIL-M&W (502 HT)	18.25	3.50	220.00
CILM	4.50					
SP	0.20					

Dataset: american warrior_shriwise #1-35.db: field/well/STKML/pass3.1
 Total length: 42.33 ft
 Total weight: 685.00 lb
 O.D.: 4.00 in

Log Variables

DatabaseC:\ProgramData\Warrior\Data\american_warrior_shriwise #1-35.db
 Dataset field/well/STKML/pass3.1/_vars_

Top - Bottom

A	BOREID in	BOTTEMP degF	CASEOD in	CASETHCK in	FLUIDDEN g/cc	M	MATRXDEN g/cc
1	7.875	123	5.5	0	1	2	2.71
NPORSEL	PERFS	SNDERR mmho/m	SNDERRM mmho/m	SPSHIFT mV	SRFTEMP degF	SZCOR	TDEPTH ft
Limestone	No	3	5	282	72	Off	4694

Variable Description

A : Cement Factor (a)
 BOREID : Borehole I.D.
 BOTTEMP : Bottom Hole Temperature
 CASEOD : Casing O.D.
 CASETHCK : Casing Thickness
 FLUIDDEN : Fluid Density
 M : Cement Exp (m)
 MATRXDEN : Matrix Density

NPORSEL : Neutron Porosity Curve Select
 PERFS : Perforation Flag
 SNDERR : Deep Sonde Error Correction
 SNDERRM : Medium Sonde Error Correction
 SPSHIFT : S.P. Baseline Offset
 SRFTEMP : Surface Temperature
 SZCOR : CN Size Cor. ?
 TDEPTH : Total Depth



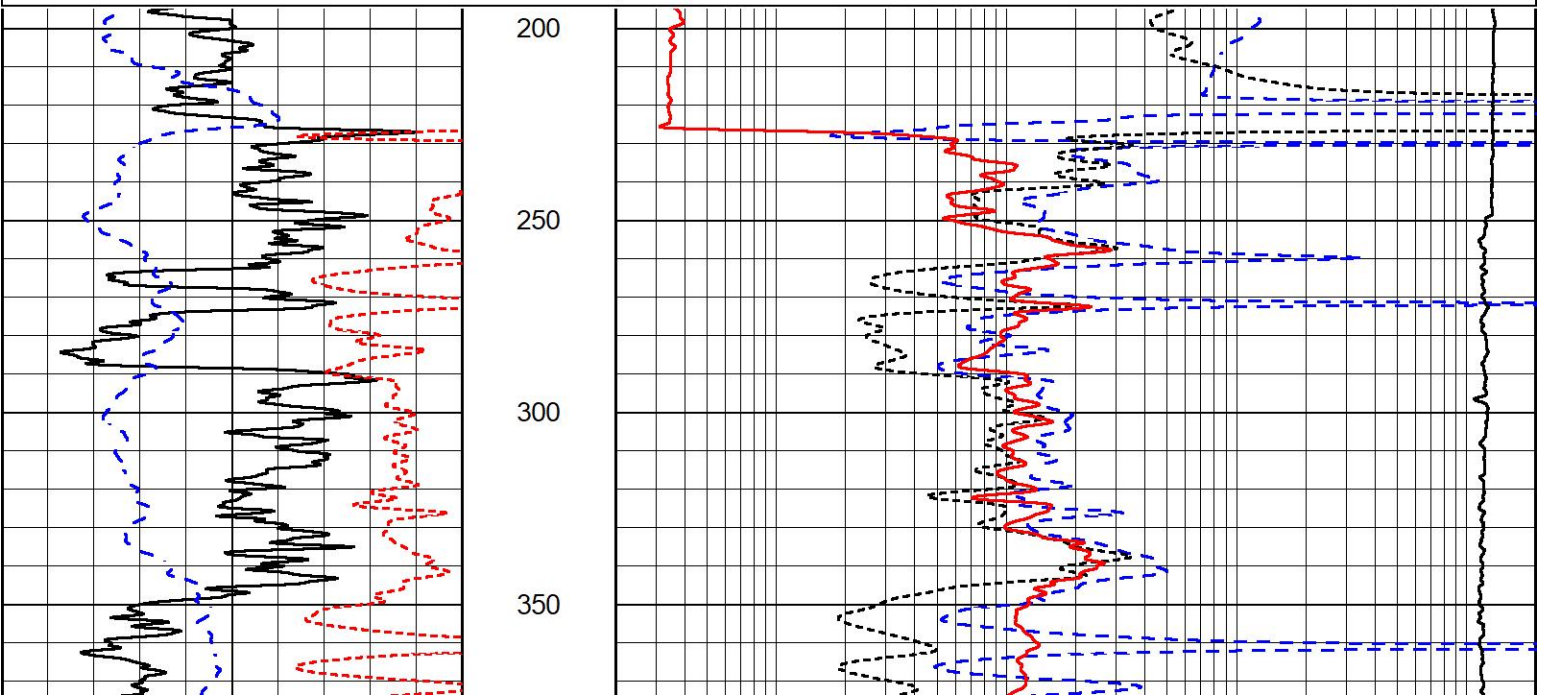
2" SCALE RESISTIVITY

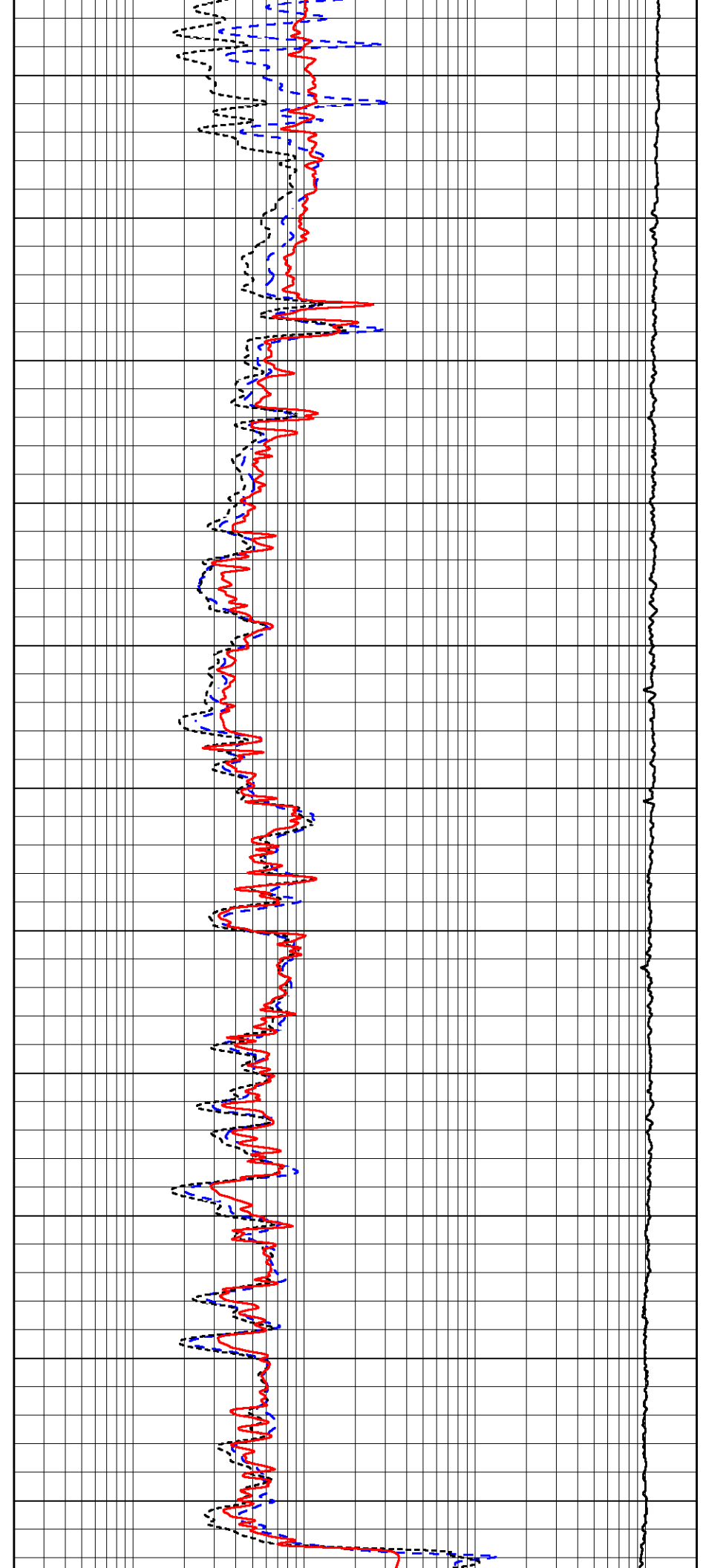
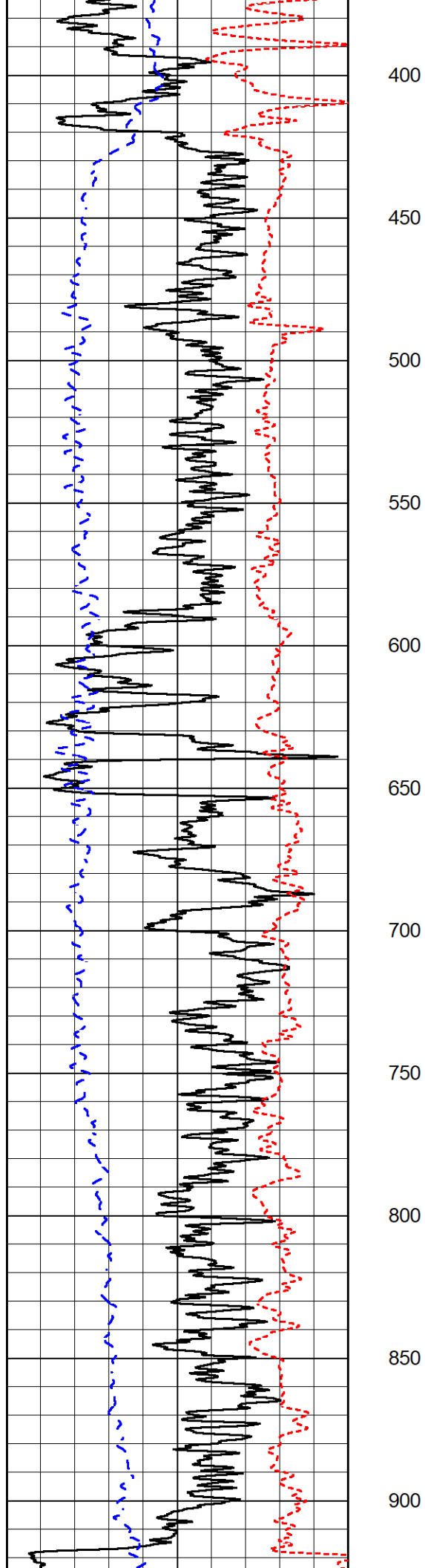
MAIN PASS

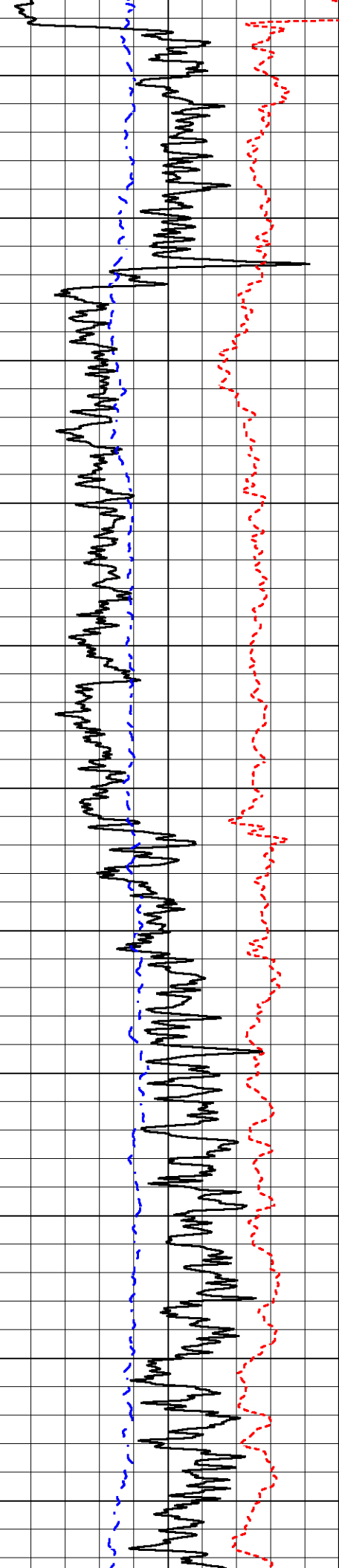
Database File american_warrior_shriwise #1-35.db
 Dataset Pathname STKML/pass3.2
 Presentation Format _dil
 Dataset Creation Fri Jul 07 09:06:16 2023
 Charted by Depth in Feet scaled 1:600

0	Gamma Ray (GAPI)	150
-160	RXORT	40
-200	SP (mV)	0

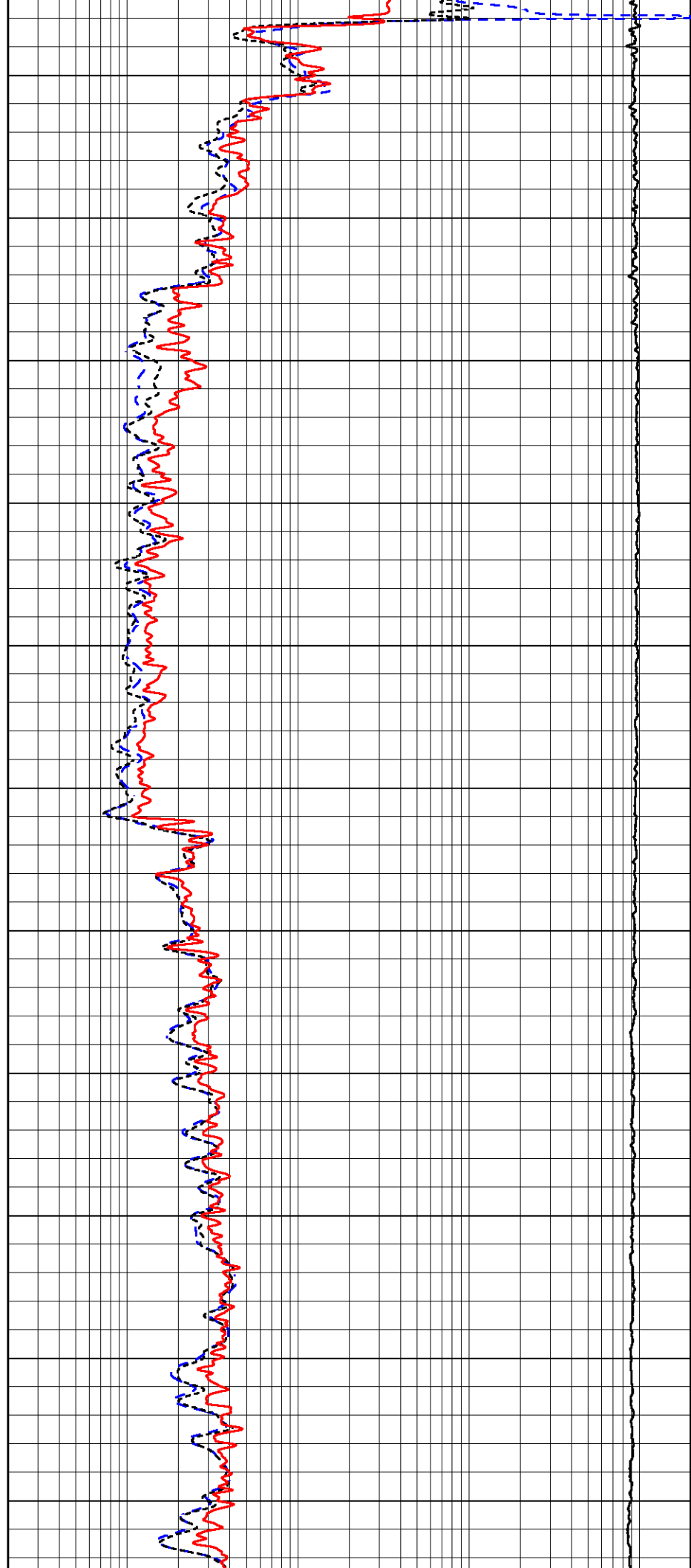
0.2	Deep Resistivity (Ohm-m)	2000
0.2	Medium Resistivity (Ohm-m)	2000
0.2	RLL3 (Ohm-m)	2000
10000	Line Tension (lb)	0

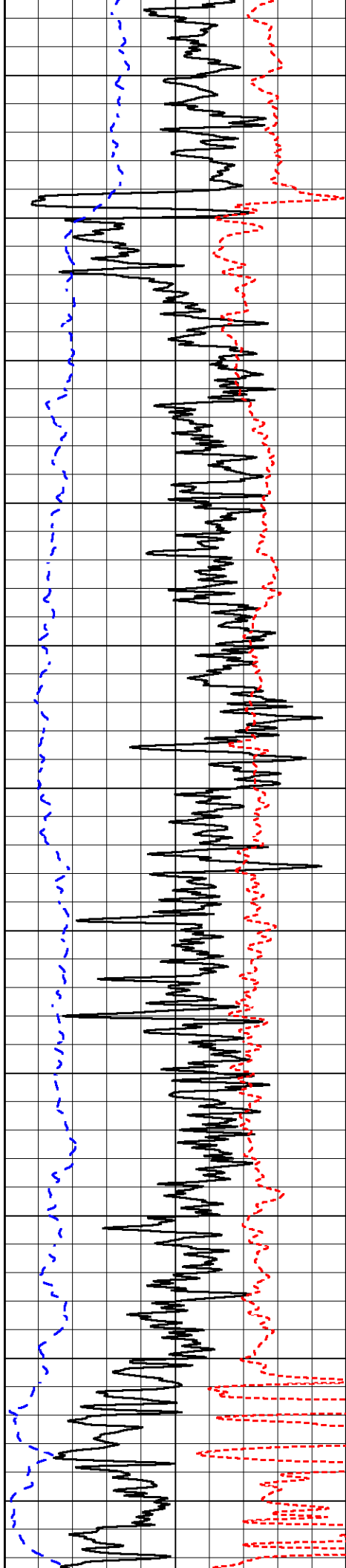






950
1000
1050
1100
1150
1200
1250
1300
1350
1400
1450





1500

1550

1600

1650

1700

1750

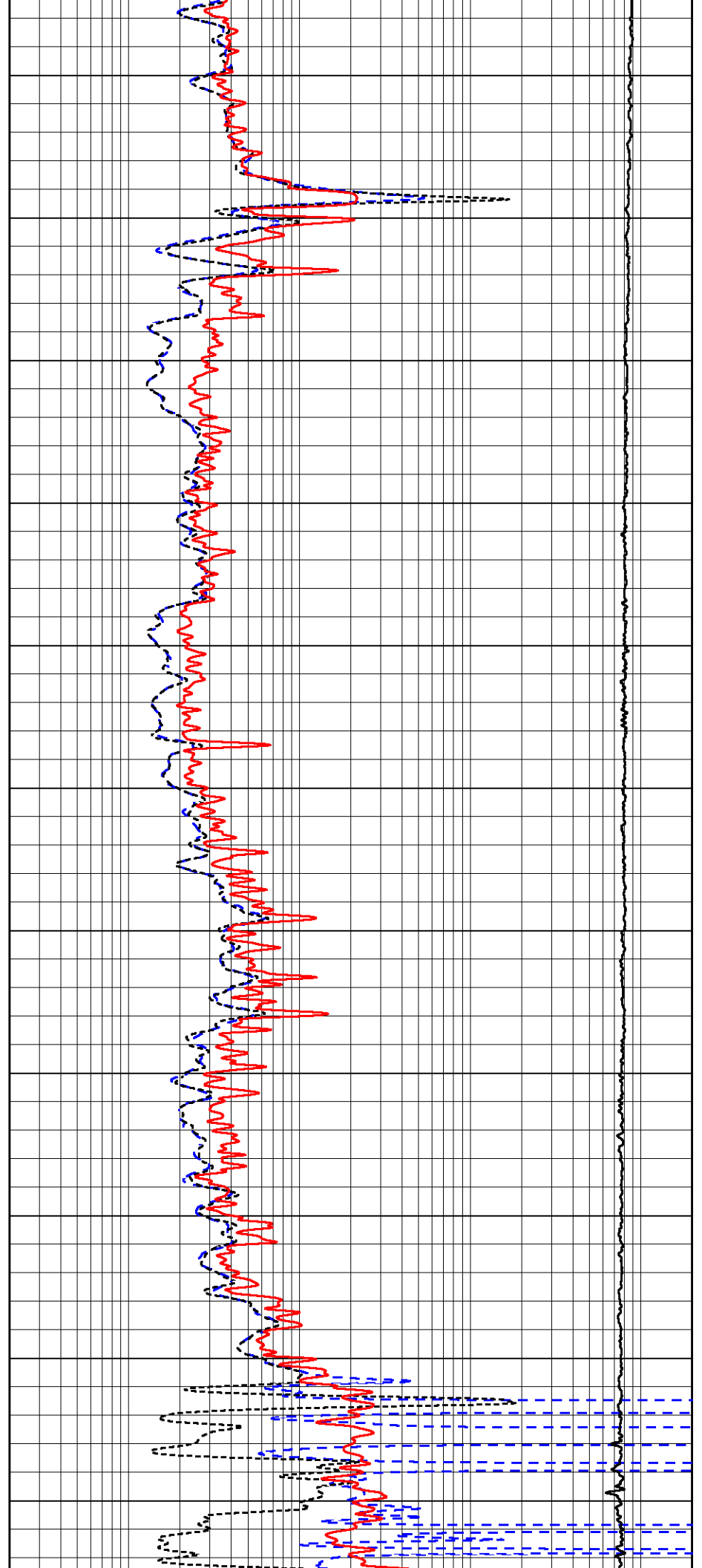
1800

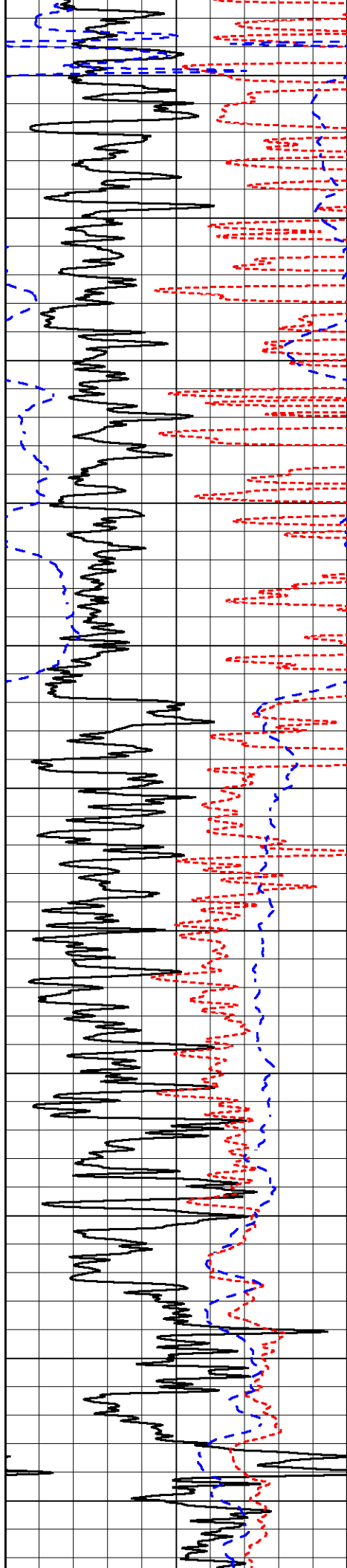
1850

1900

1950

2000





2050

2100

2150

2200

2250

2300

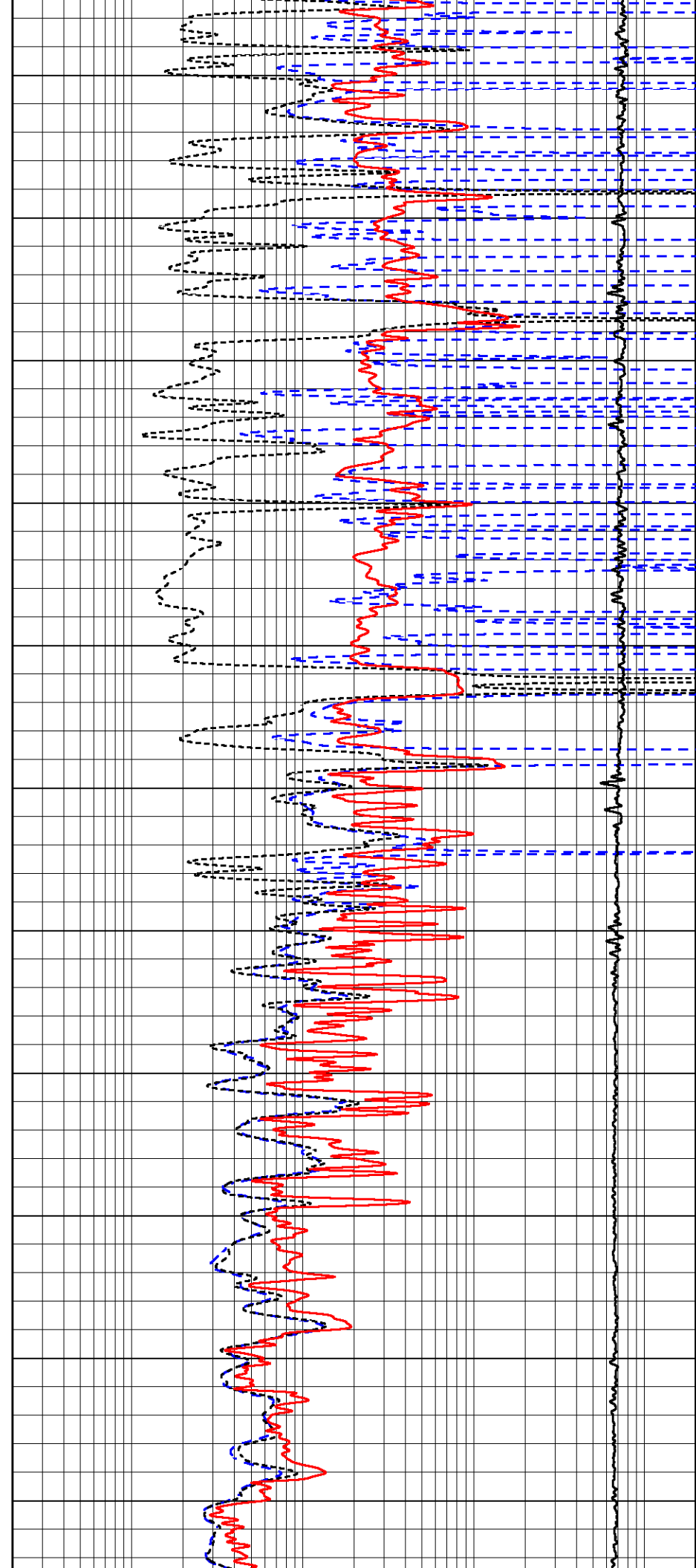
2350

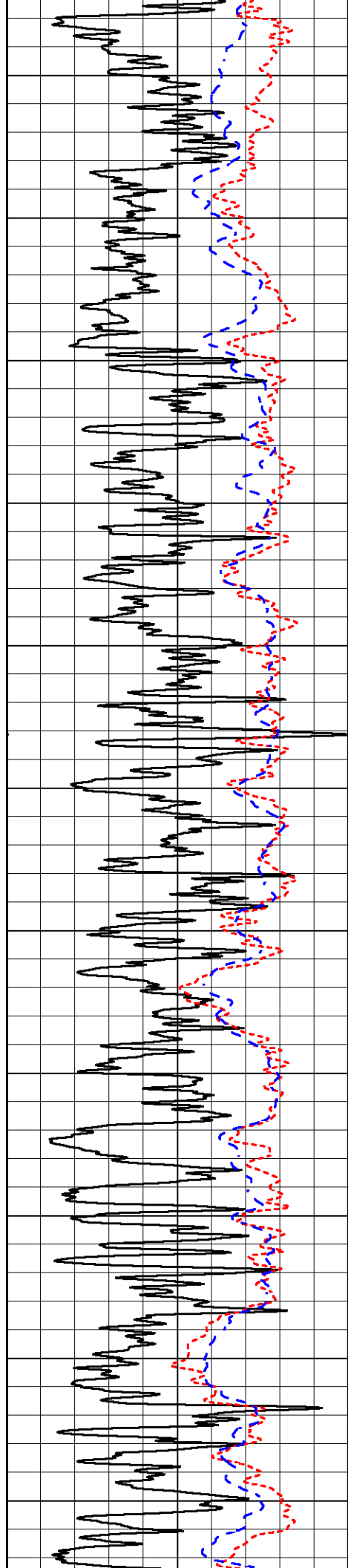
2400

2450

2500

2550





2600

2650

2700

2750

2800

2850

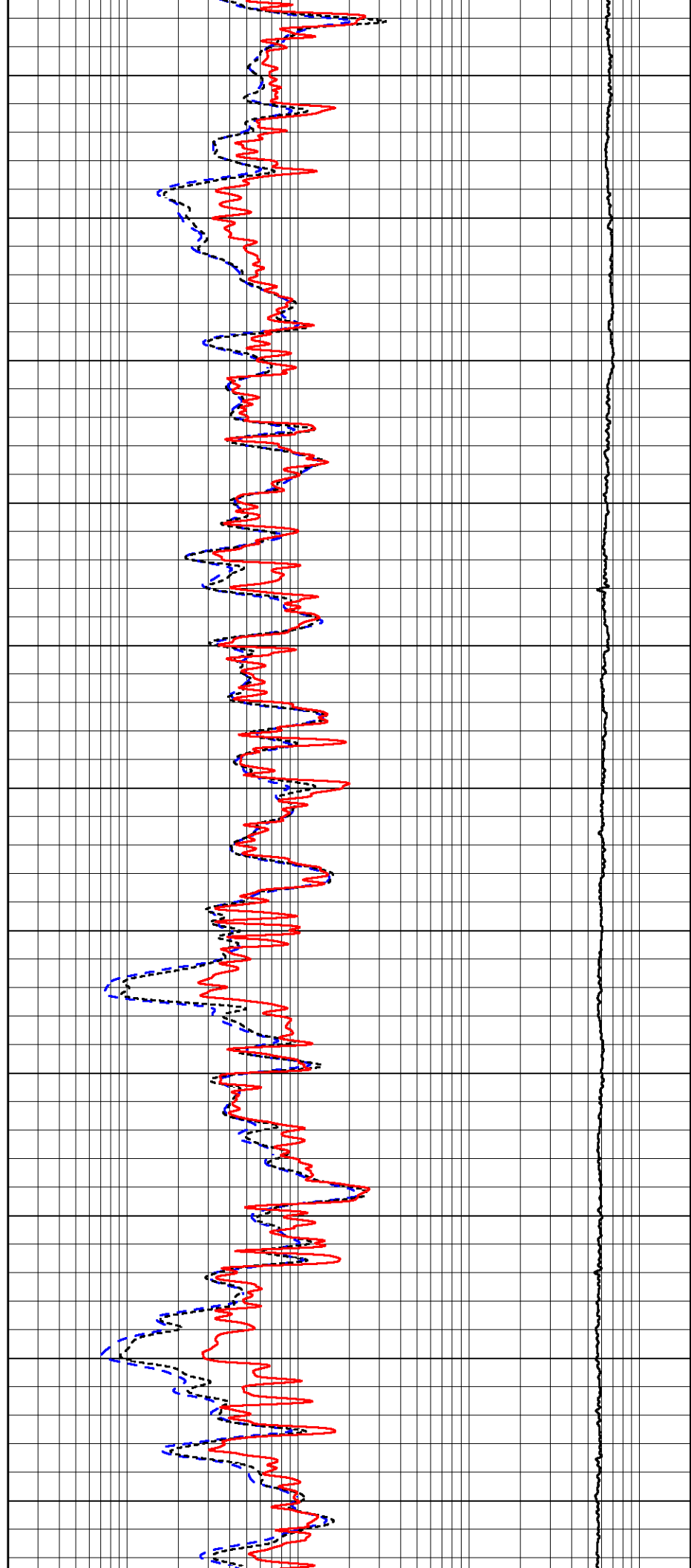
2900

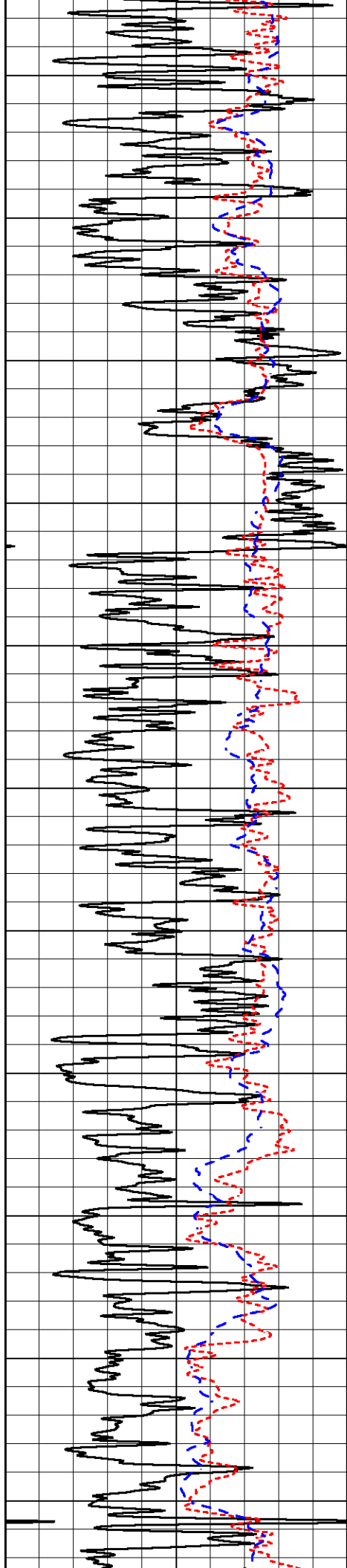
2950

3000

3050

3100





3150

3200

3250

3300

3350

3400

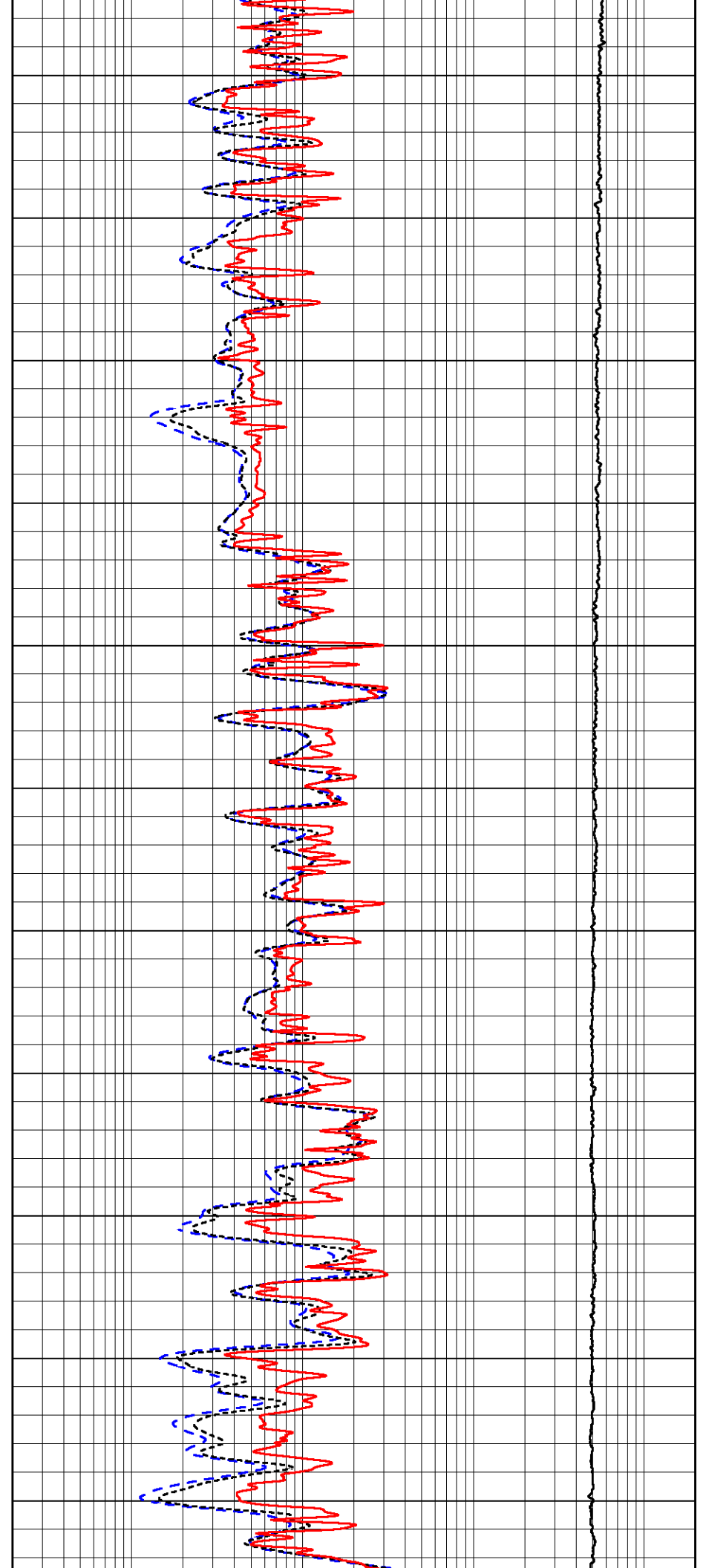
3450

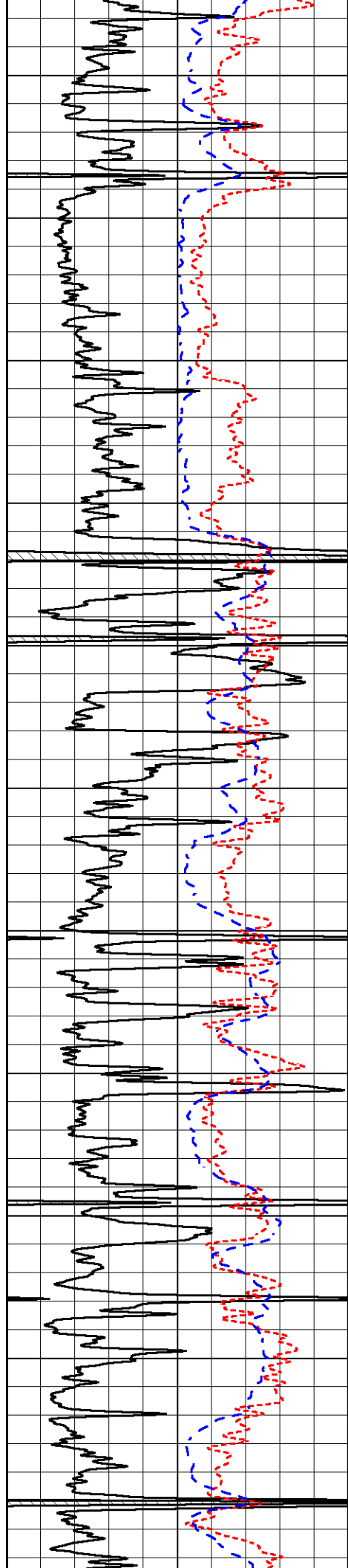
3500

3550

3600

3650





3700

3750

3800

3850

3900

3950

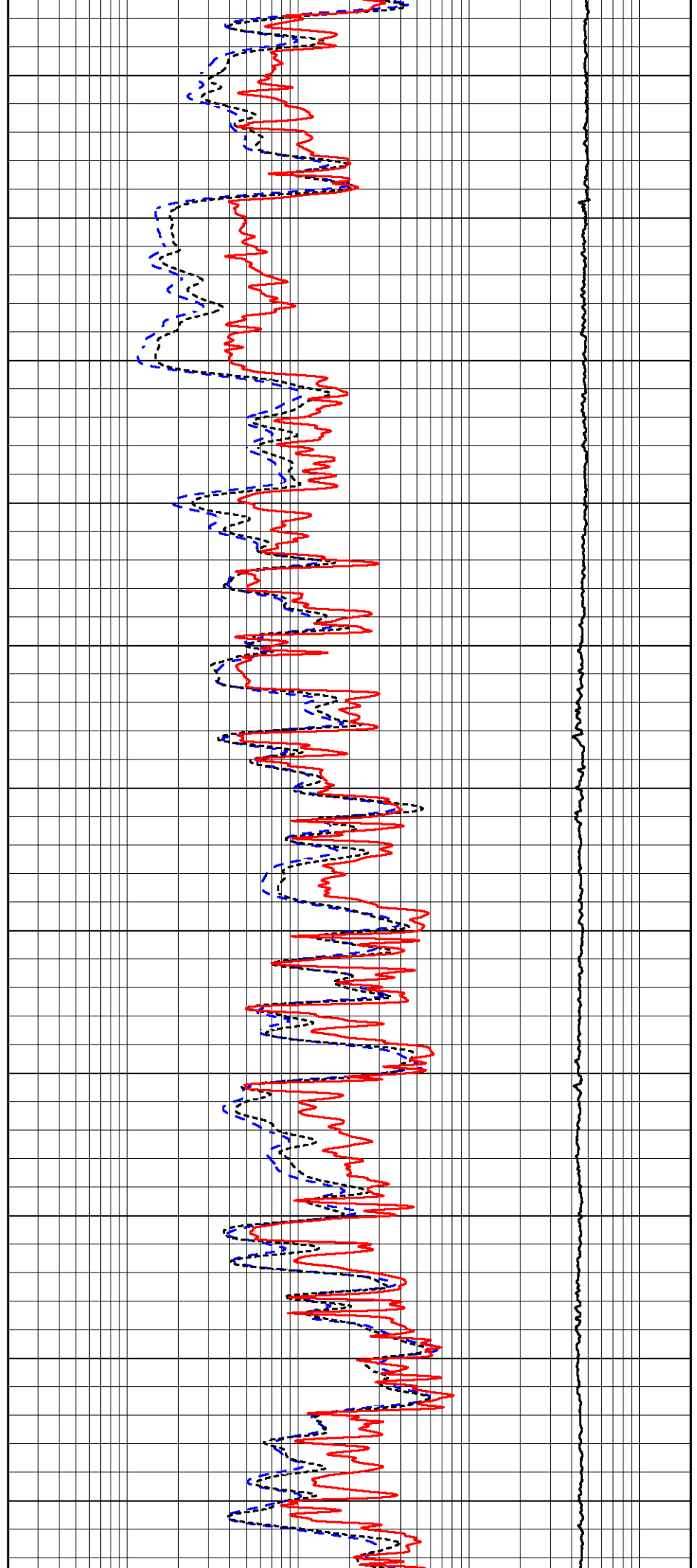
4000

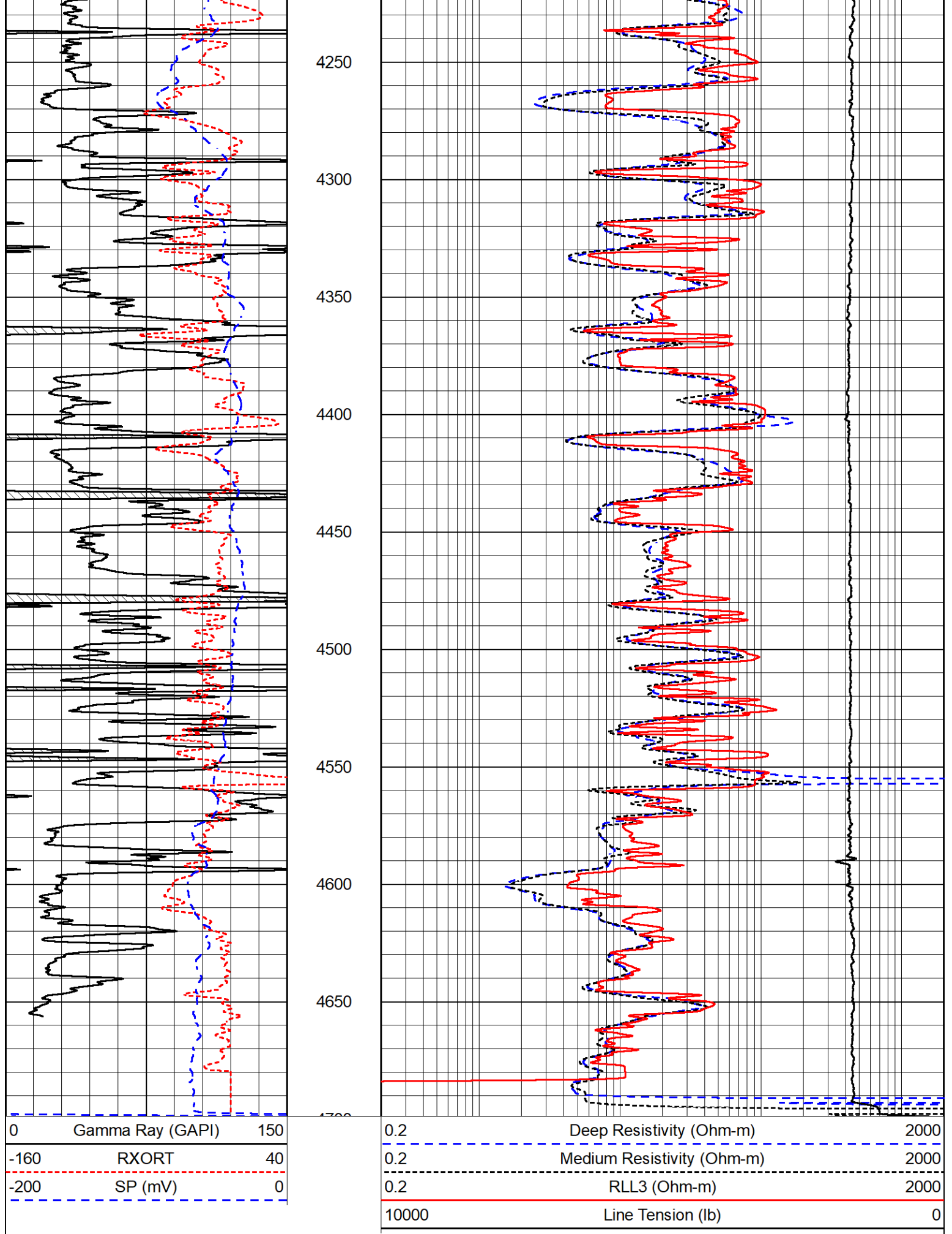
4050

4100

4150

4200





ANHYDRITE SECTION



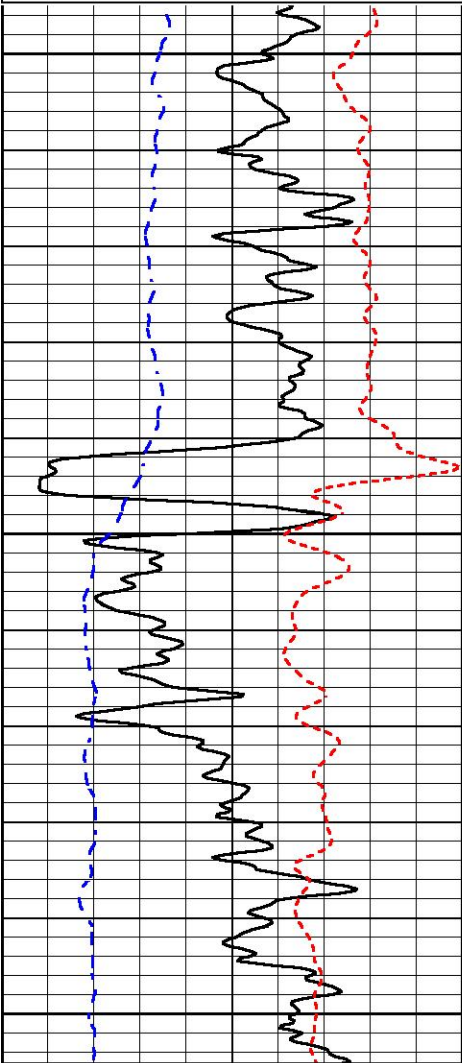
ANHYDRITE SECTION

MAIN PASS

Database File american_warrior_shriwise #1-35.db
 Dataset Pathname STKML/pass3.5
 Presentation Format _dil
 Dataset Creation Fri Jul 07 09:12:28 2023
 Charted by Depth in Feet scaled 1:240

0	Gamma Ray (GAPI)	150
-160	RXORT	40
-200	SP (mV)	0

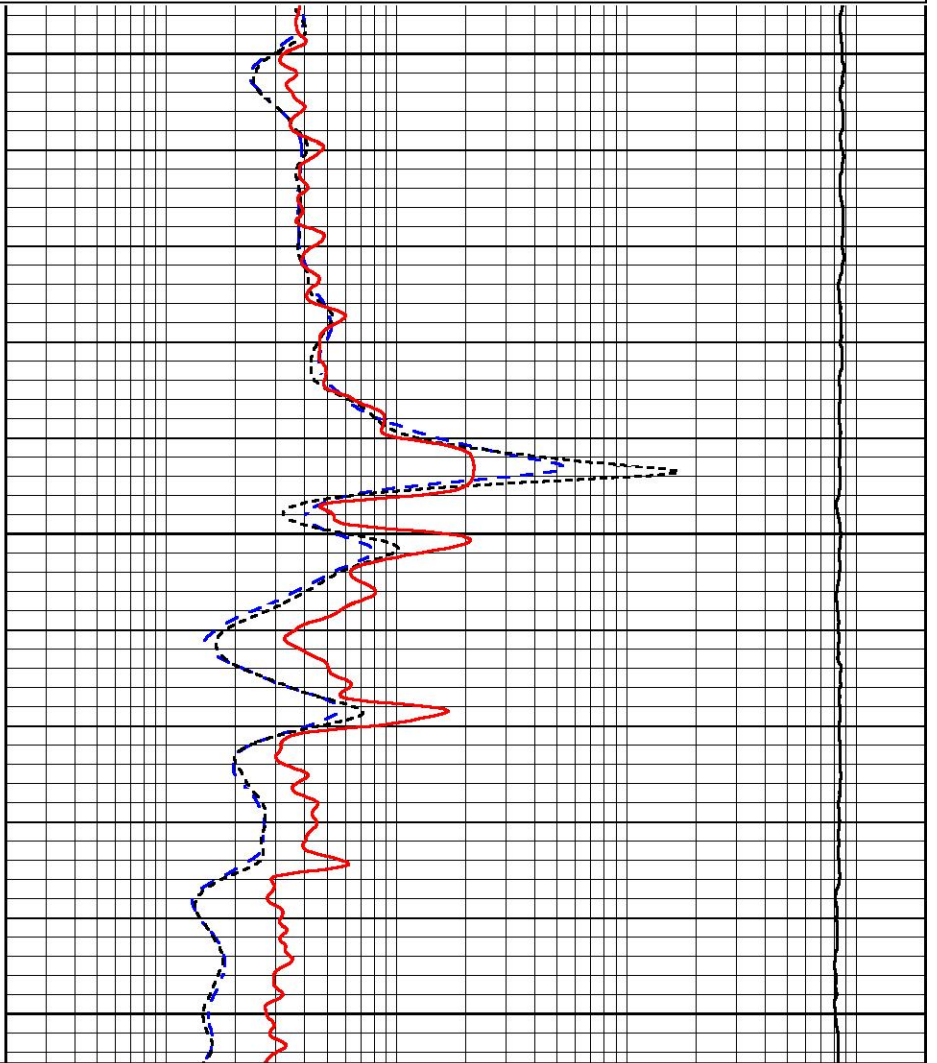
0.2	Deep Resistivity (Ohm-m)	2000
0.2	Medium Resistivity (Ohm-m)	2000
0.2	RLL3 (Ohm-m)	2000
10000	Line Tension (lb)	0



1500

1550

1600



0	Gamma Ray (GAPI)	150
-160	RXORT	40
-200	SP (mV)	0

0.2	Deep Resistivity (Ohm-m)	2000
0.2	Medium Resistivity (Ohm-m)	2000
0.2	RLL3 (Ohm-m)	2000
10000	Line Tension (lb)	0



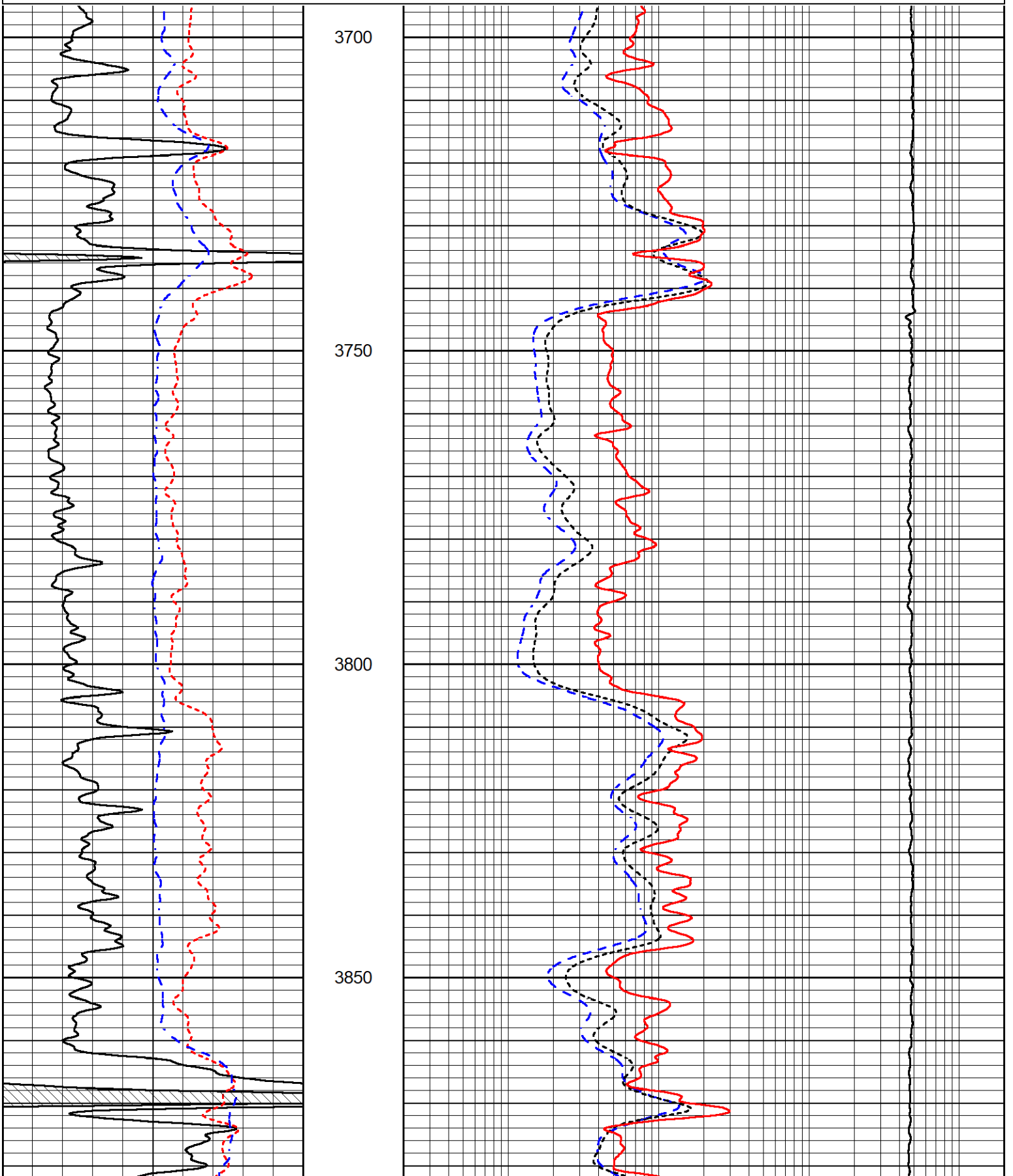
DETAIL SECTION

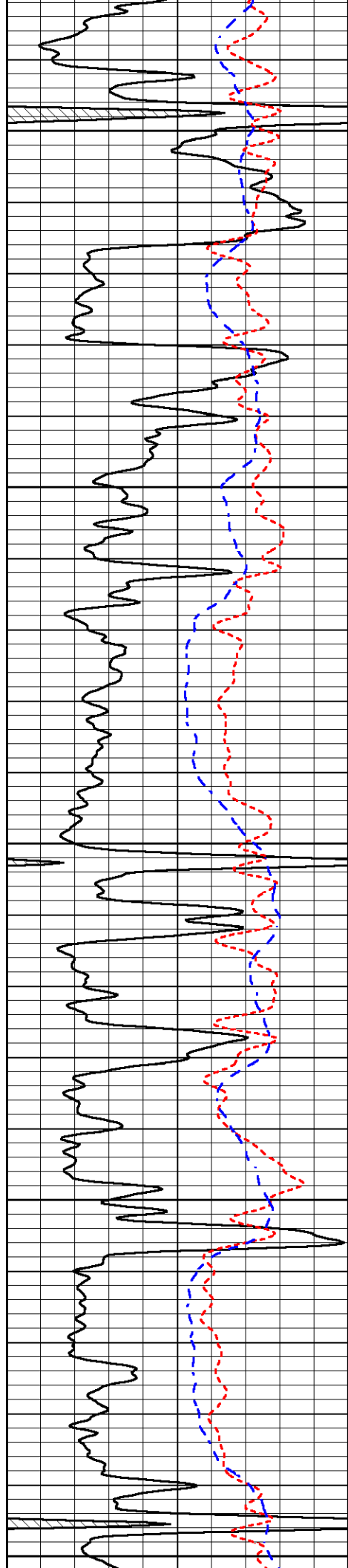
MAIN PASS

Database File american_warrior_shriwise #1-35.db
 Dataset Pathname STKML/pass3.1

0	Gamma Ray (GAPI)	150
-160	RXORT	40
-200	SP (mV)	0

0.2	Deep Resistivity (Ohm-m)	2000
0.2	Medium Resistivity (Ohm-m)	2000
0.2	RLL3 (Ohm-m)	2000
10000	Line Tension (lb)	0





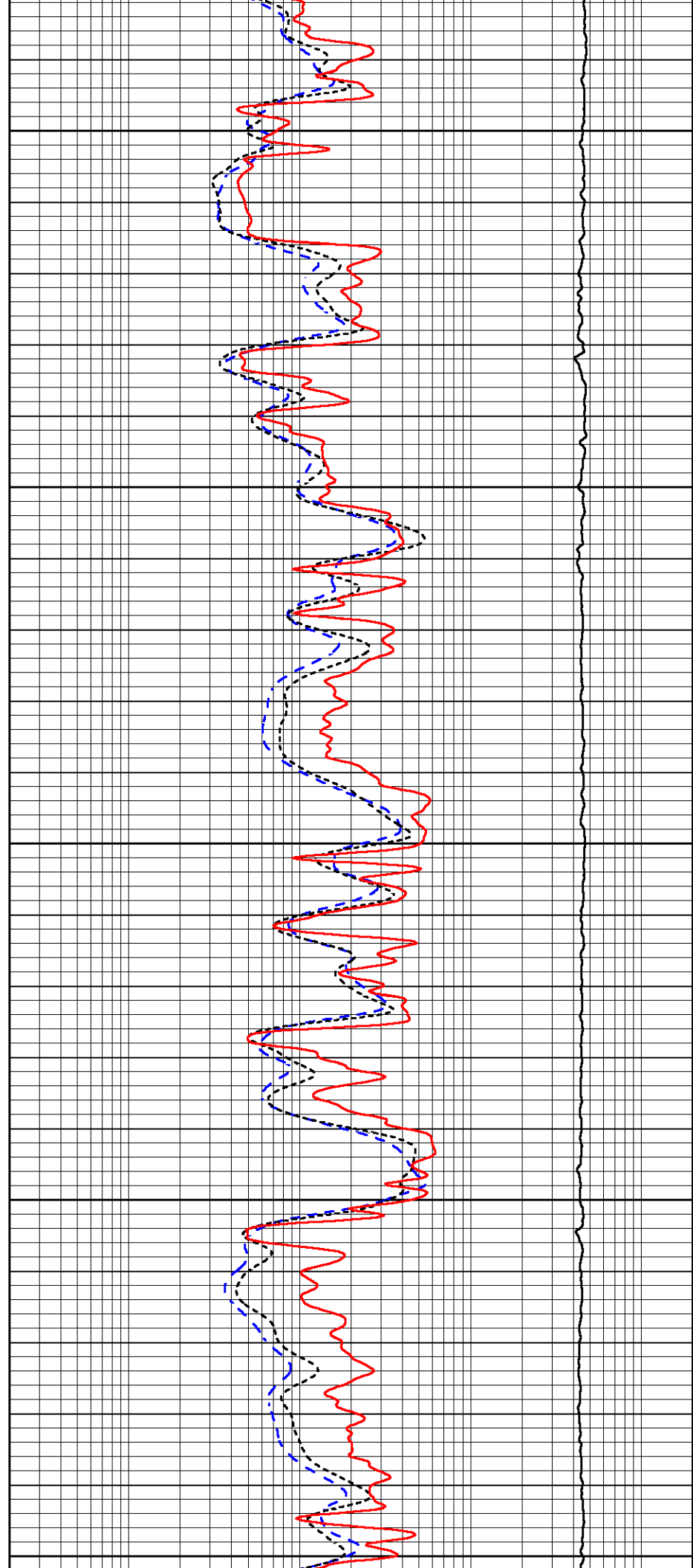
3900

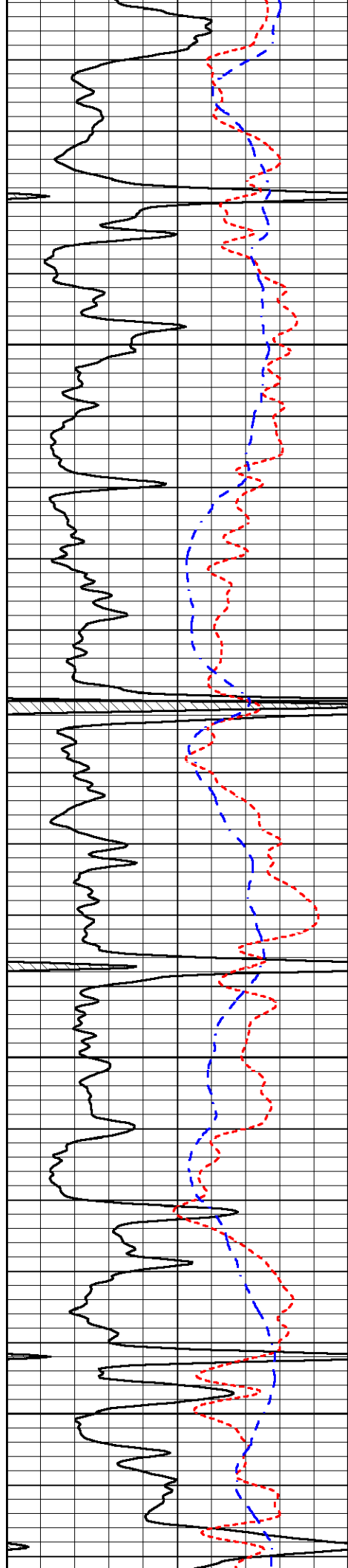
3950

4000

4050

4100



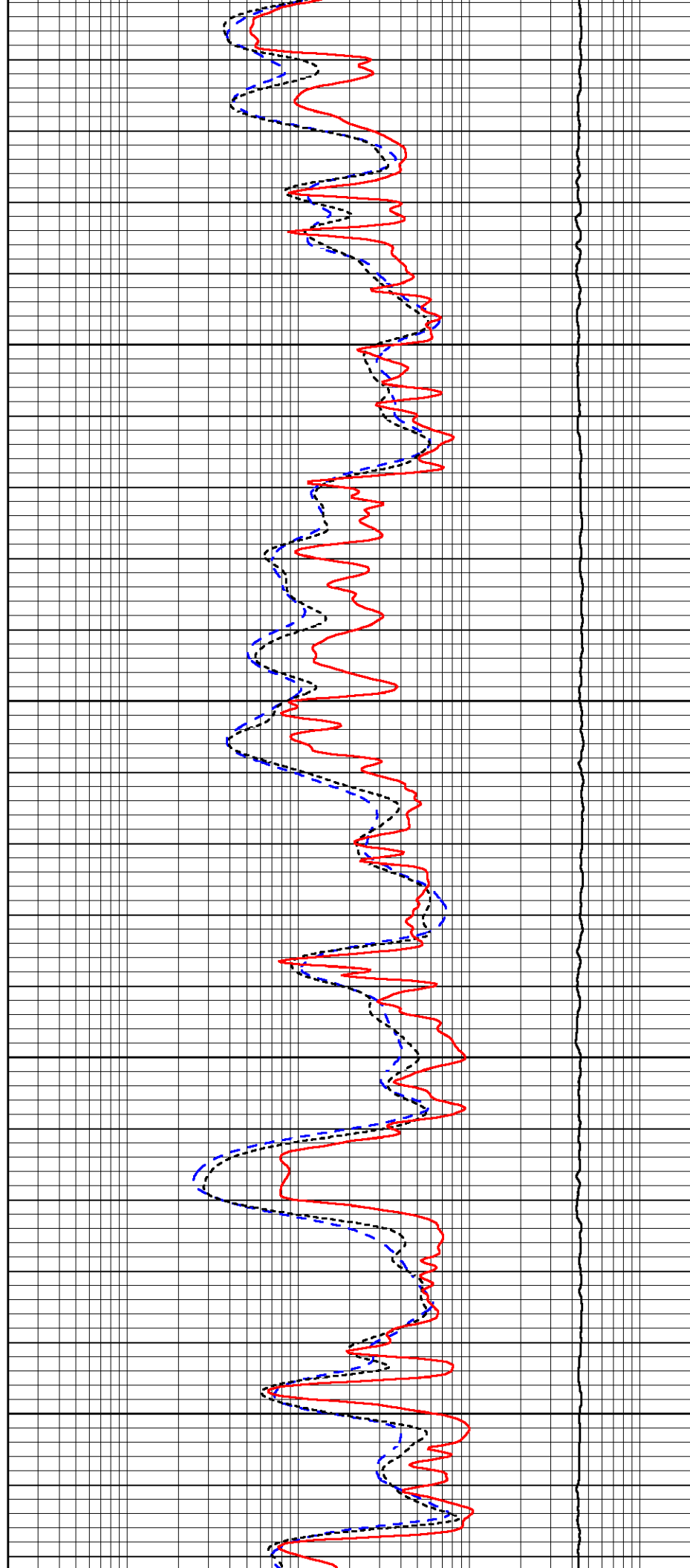


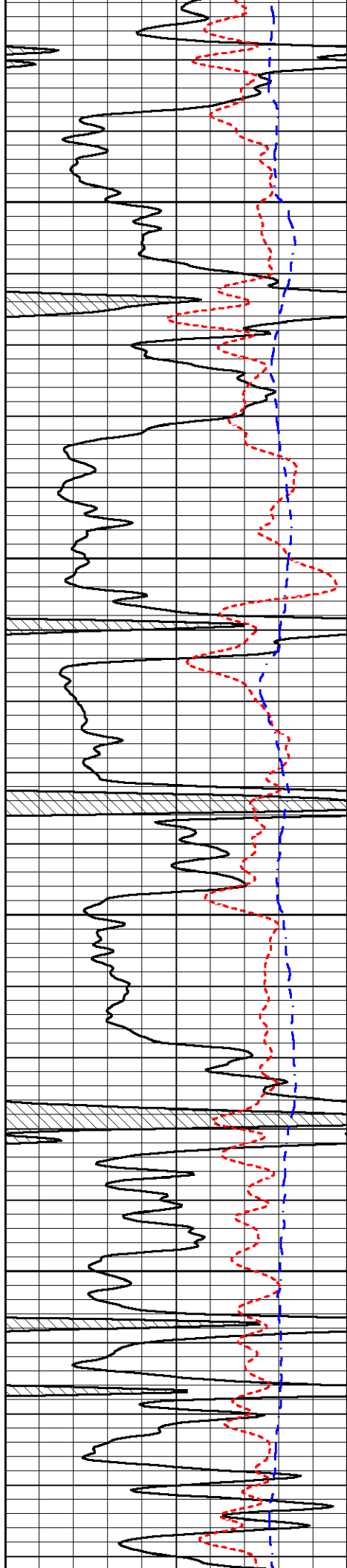
4150

4200

4250

4300



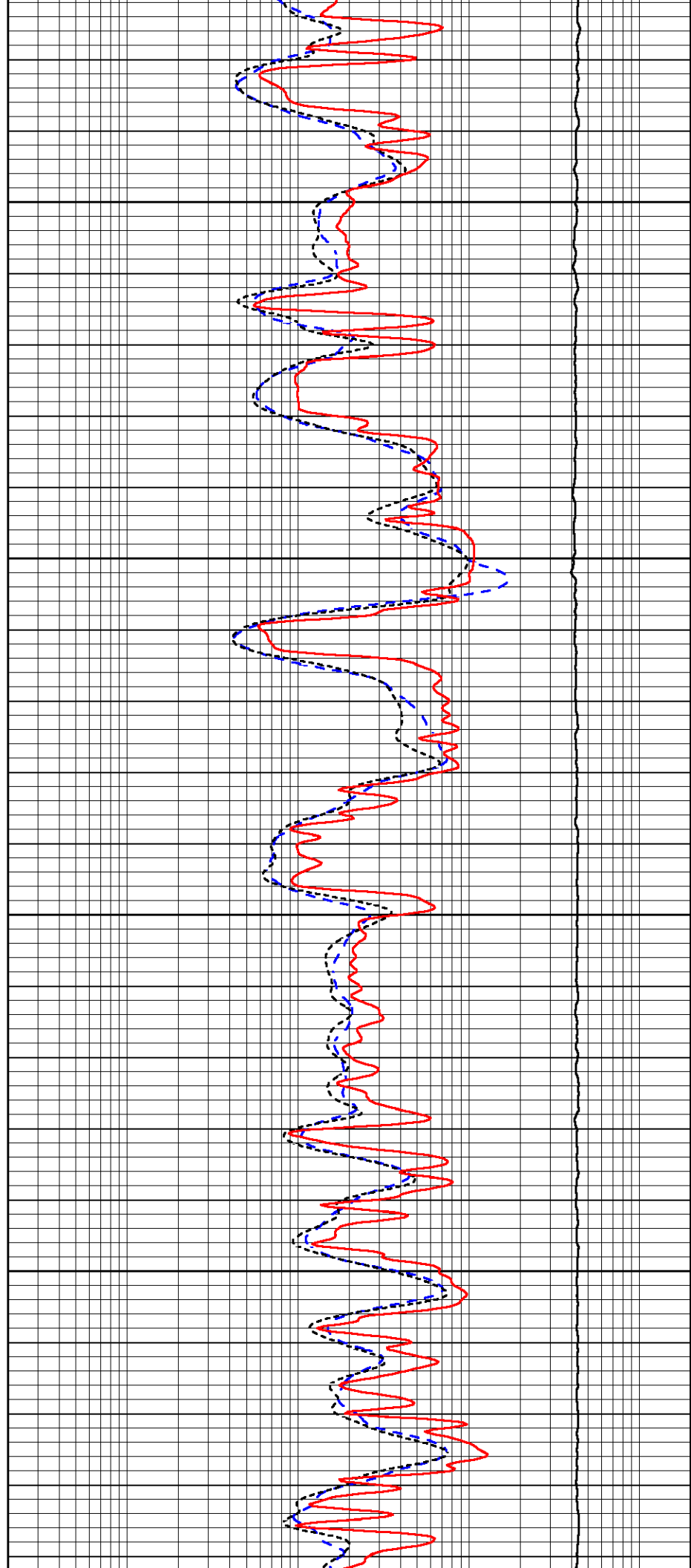


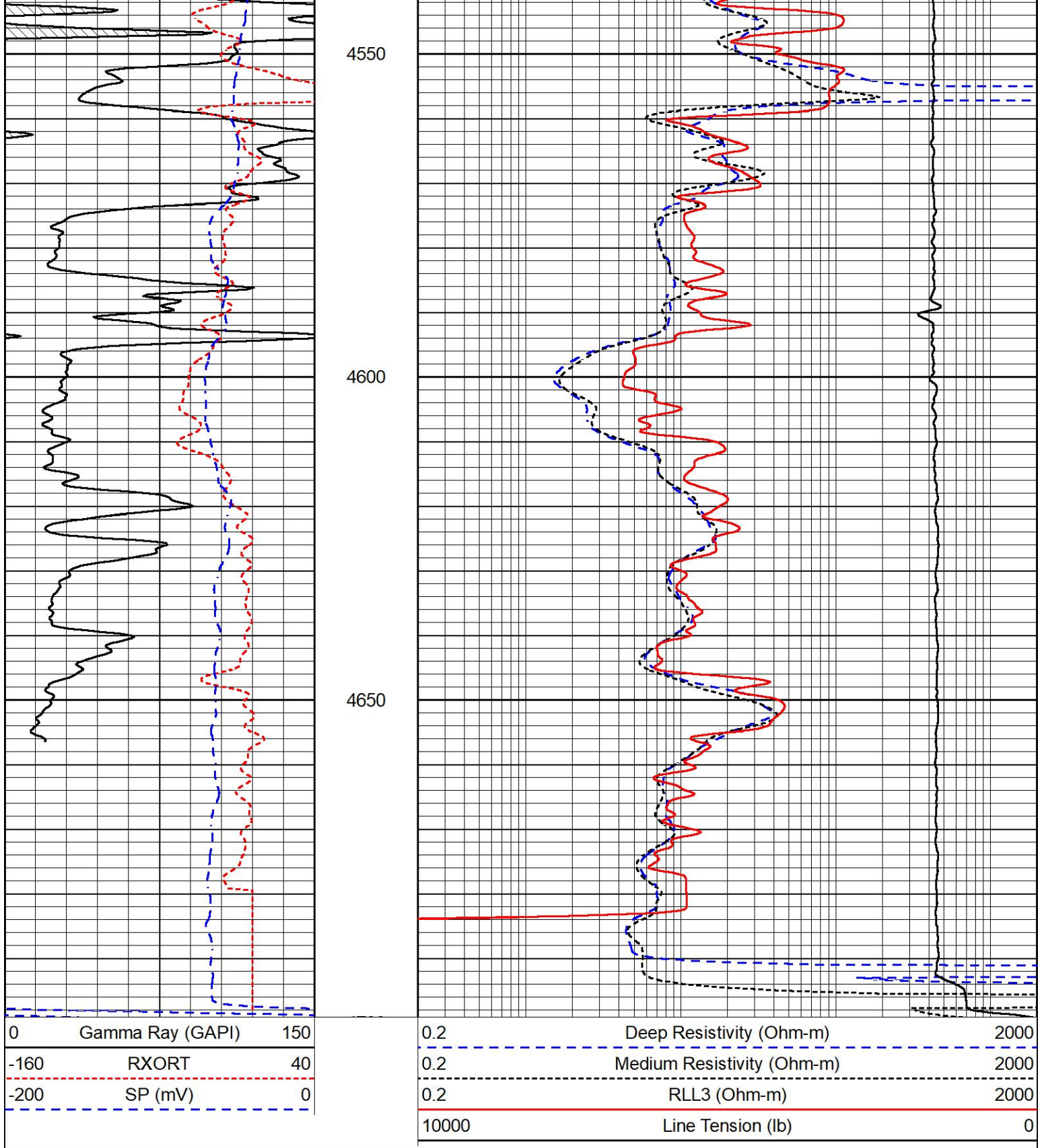
4350

4400

4450

4500





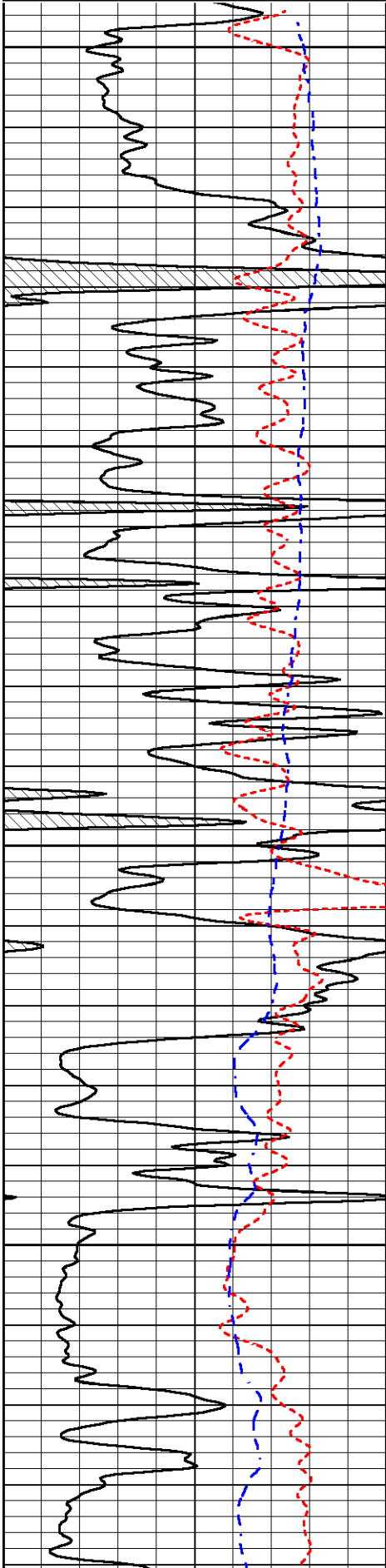
REPEAT SECTION

REPEAT PASS

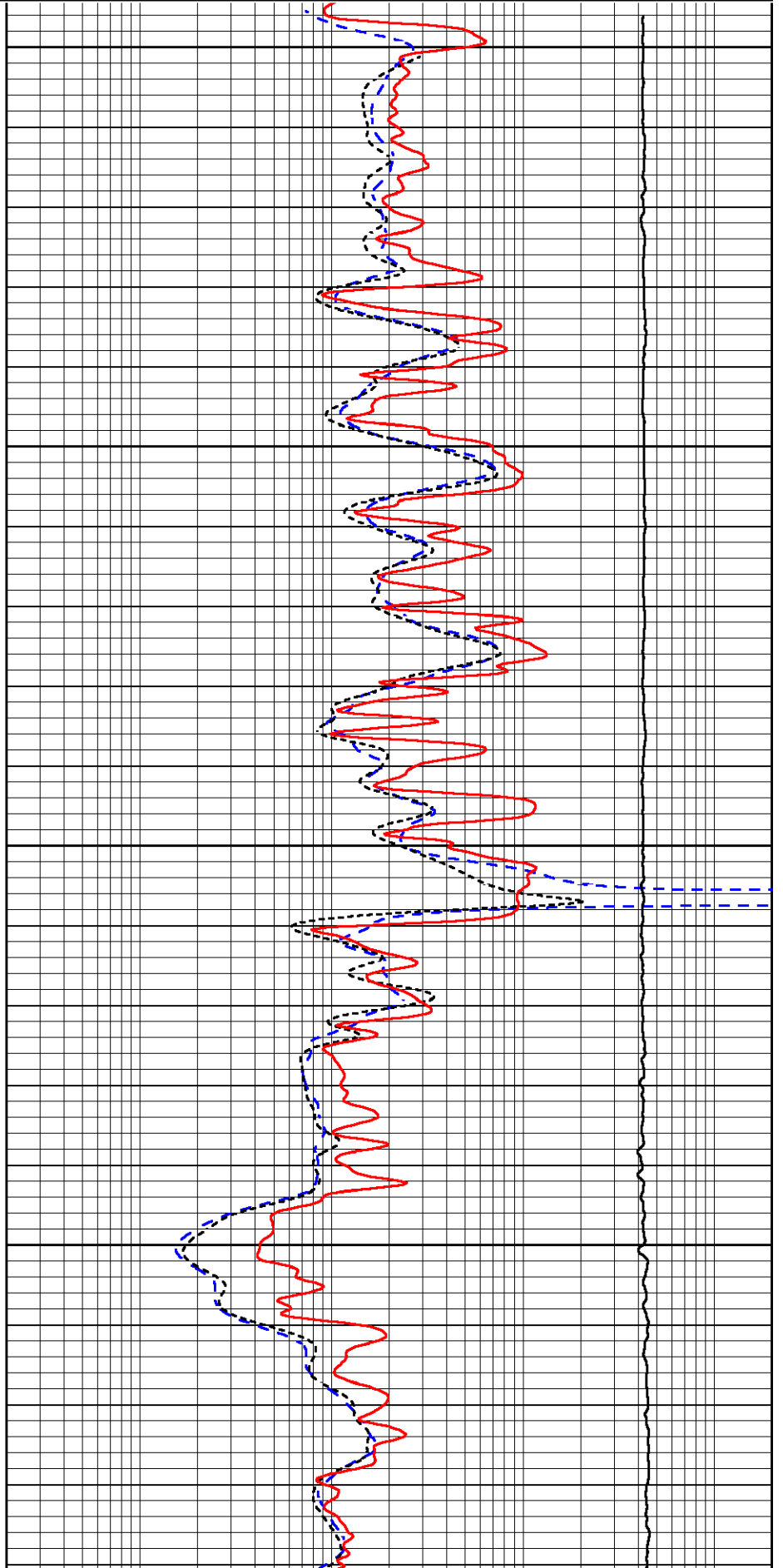
Database File american_warrior_shriwise #1-35.db
 Dataset Pathname STKML/pass2.1
 Presentation Format _dil
 Dataset Creation Fri Jul 07 08:21:41 2023
 Charted by Depth in Feet scaled 1:240

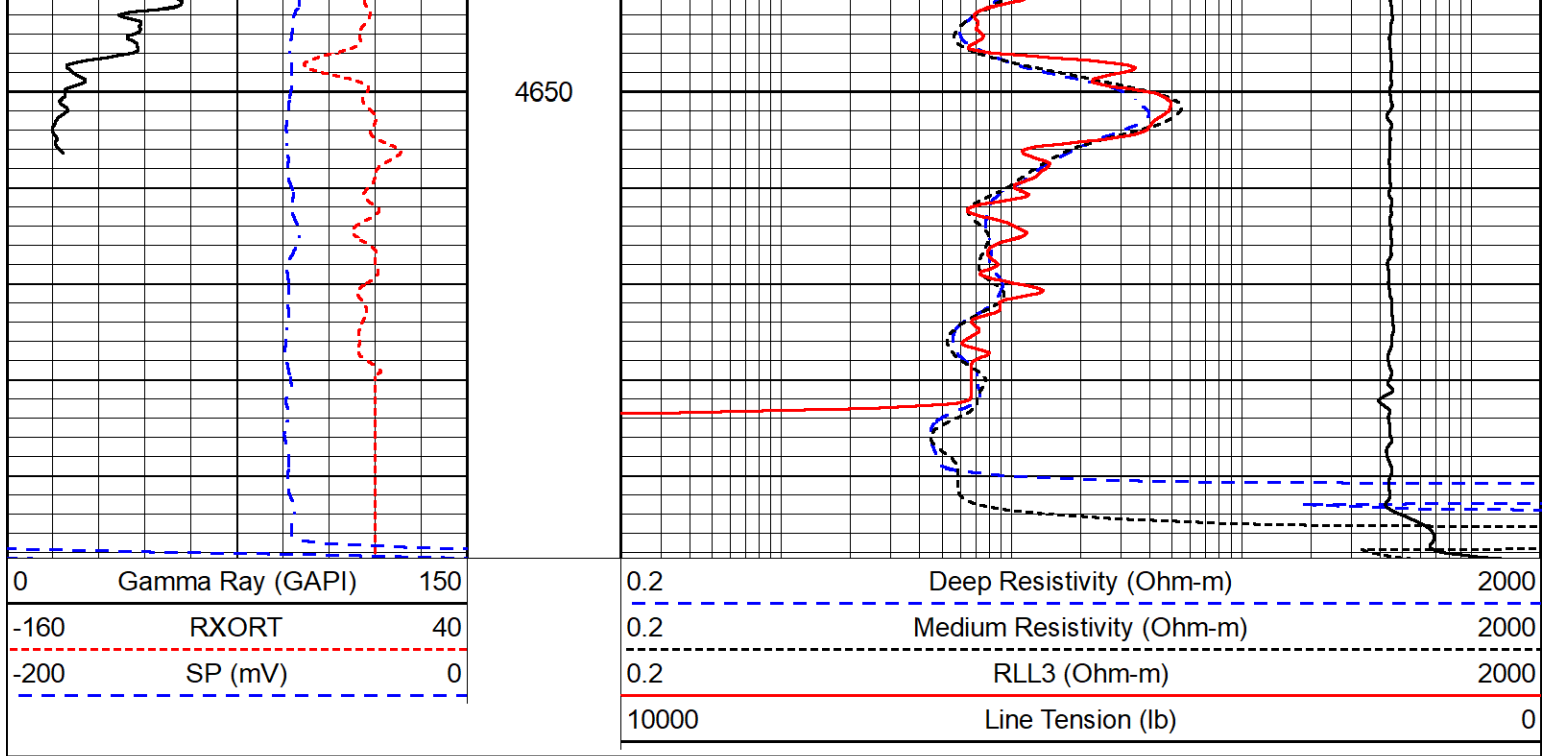
0	Gamma Ray (GAPI)	150
-160	RXORT	40
-200	SP (mV)	0

0.2	Deep Resistivity (Ohm-m)	2000
0.2	Medium Resistivity (Ohm-m)	2000
0.2	RLL3 (Ohm-m)	2000
10000	Line Tension (lb)	0



4450
4500
4550
4600





Calibration Report

Database File american warrior_shriwise #1-35.db
 Dataset Pathname STKML/pass3.1
 Dataset Creation Fri Jul 07 09:04:45 2023

Dual Induction Calibration Report

Serial-Model: 502 HT-M&W
 Surface Cal Performed:

Loop:	Readings		References			Results	
	Air	Loop	Air	Loop	mmho/m	m	b
Deep	83.639	487.104	0.000	255.800	mmho/m	0.454	-35.000
Medium	113.335	1585.690	0.000	255.800	mmho/m	0.340	-14.000

Microlog Calibration Report

Serial-Model: 401-PSIML
 Performed: Mon Jun 5 16:37:07 2023

	Readings		References			Results	
	Zero	Cal	Zero	Cal	Ohm-m	m	b
Normal	0.0000	1.0000	0.0000	1.0000	Ohm-m	16500.0000	0.0000
Inverse	0.0000	1.0000	0.0000	1.0000	Ohm-m	15000.0000	0.2500
Caliper	1.0052	1.0858	5.0000	16.5000	in	142.7190	-138.8800

Compensated Density Calibration Report

Serial-Model: 307-11-M&W
 Source / Verifier: 20762B / 2ci
 Master Calibration Performed: Tue Jun 6 21:48:20 2023
 Before Survey Verification Performed:
 After Survey Verification Performed:

Master Calibration

	Density		Far Detector	Near Detector	
Magnesium	1.755	g/cc	3689.70	4749.82	cps
Aluminum	2.590	g/cc	822.19	3221.38	cps
Spine Angle = 75.50			Density/Spine Ratio = 0.538		
	Size		Reading		
Small Ring	6.00	in	1.16		
Large Ring	18.00	in	1.01		

Compensated Neutron Calibration Report

Serial Number: 207-MW
Tool Model: M&W

CALIBRATION

Detector	Readings	Target	Normalization
Short Space	6240.00 cps	1000.00 cps	1.6025
Long Space	460.00 cps	1000.00 cps	1.9500

Gamma Ray Calibration Report

Serial Number: 105
Tool Model: M&W
Performed: Fri Dec 3 15:10:46 2021

Calibrator Value: 500.0 GAPI

Background Reading: 24.0 cps
Calibrator Reading: 637.0 cps

Sensitivity: 0.5500 GAPI/cps



Company American Warrior , Inc
Well Shriwise #1-35
Field Jetmore
County Hodgeman
State Kansas