



MIDWEST WIRELINE

DUAL COMPENSATED POROSITY

Company American Warrior, Inc
Well Shriwise #1-35
Field Jetmore
County Hodgeman **State** Kansas

Company American Warrior, Inc
 Well Shriwise #1-35
 Field Jetmore
 County Hodgeman
 State Kansas

Location: 2120 FNL & 1076 FEL SEC 35 TWP 22S RGE 24W	API #: 15-083-22028-00-00 Ground Level Elevation 2316 Log Measured From Kelly Bushing Drilling Measured From Kelly Bushing
Other Services DIL MEL/BHCS	

Date	07/07/2023			
Run Number	One			
Type Log	CNL/CDL			
Depth Driller	4695			
Depth Logger	4694			
Bottom Logged Interval	4665			
Top Logged Interval	3700			
Type Fluid In Hole	Chemical Mud			
Salinity, PPM CL	6700			
Density	9.0			
Level	Full			
Max. Rec. Temp. F	123			
Operating Rig Time	5 Hours			
Equipment -- Location	P-24 Hays			
Recorded By	Justin Trout			
Witnessed By	Jason Alm			

Borehole Record				Casing Record			
Run No.	Bit	From	To	Size	Wgt.	From	To
One	12.25	0	226	8.625	23	0	226
Two	7.875	226	TD				

<<< Fold Here >>>

All interpretations are opinions based on inferences from electrical or other measurements and Midwest Wireline Services, LLC cannot and does not guarantee the accuracy or correctness of any interpretation, and Midwest Wireline Services, LLC will not be liable or responsible for any loss, costs, damages, or expenses incurred or sustained by anyone resulting from any interpretation made by any of our officers, agents or employees.

Comments

N/A DENOTES NOT AVAILABLE OR NON-APPLICABLE.

Jetmore, Ks,
 1 West, 3/4 North
 West and South into at tank battery

Log Measured From: Kelly Bushing 8 Ft. Above Permanent Datum

THANK YOU FOR USING MIDWEST WIRELINE LLC
 785-625-3858

Your Midwest Wireline Crew Engineer: Justin Trout Operator: Operator: Operator:	This Log Record Was Witnessed By Primary Witness: Jason Alm Secondary Witness: Secondary Witness: Secondary Witness:
--	---

Sensor	Offset (ft)	Schematic	Description	Length (ft)	O.D. (in)	Weight (lb)
GR	40.33		GR-M&W (105)	3.00	3.50	50.00
CNLSC CNSSC	37.23 36.48		CNT-M&W (207-MW)	5.00	3.50	100.00
LSD DCAL SSD	28.18 28.17 27.68		CDL-M&W (307-11)	8.50	4.00	250.00
MCAL MI MN	19.58 19.58 19.58		ML-PSIML (401)	7.58	4.00	65.00
RLL3F RLL3	15.50 15.50					
CILD	8.33		DIL-M&W (502 HT)	18.25	3.50	220.00
CILM	4.50					
SP	0.20					

Dataset: american warrior_shriwise #1-35.db: field/well/STKML/pass3.1
 Total length: 42.33 ft
 Total weight: 685.00 lb
 O.D.: 4.00 in

Log Variables

DatabaseC:\ProgramData\Warrior\Data\american_warrior_shriwise #1-35.db
 Dataset field/well/STKML/pass3.1/_vars_

Top - Bottom

A	BOREID in	BOTTEMP degF	CASEOD in	CASETHCK in	FLUIDDEN g/cc	M	MATRXDEN g/cc
1	7.875	123	5.5	0	1	2	2.71
NPORSEL	PERFS	SNDERR mmho/m	SNDERRM mmho/m	SPSHIFT mV	SRFTEMP degF	SZCOR	TDEPTH ft
Limestone	No	3	5	282	72	Off	4694

Variable Description

A : Cement Factor (a)
 BOREID : Borehole I.D.
 BOTTEMP : Bottom Hole Temperature
 CASEOD : Casing O.D.
 CASETHCK : Casing Thickness
 FLUIDDEN : Fluid Density
 M : Cement Exp (m)
 MATRXDEN : Matrix Density

NPORSEL : Neutron Porosity Curve Select
 PERFS : Perforation Flag
 SNDERR : Deep Sonde Error Correction
 SNDERRM : Medium Sonde Error Correction
 SPSHIFT : S.P. Baseline Offset
 SRFTEMP : Surface Temperature
 SZCOR : CN Size Cor. ?
 TDEPTH : Total Depth

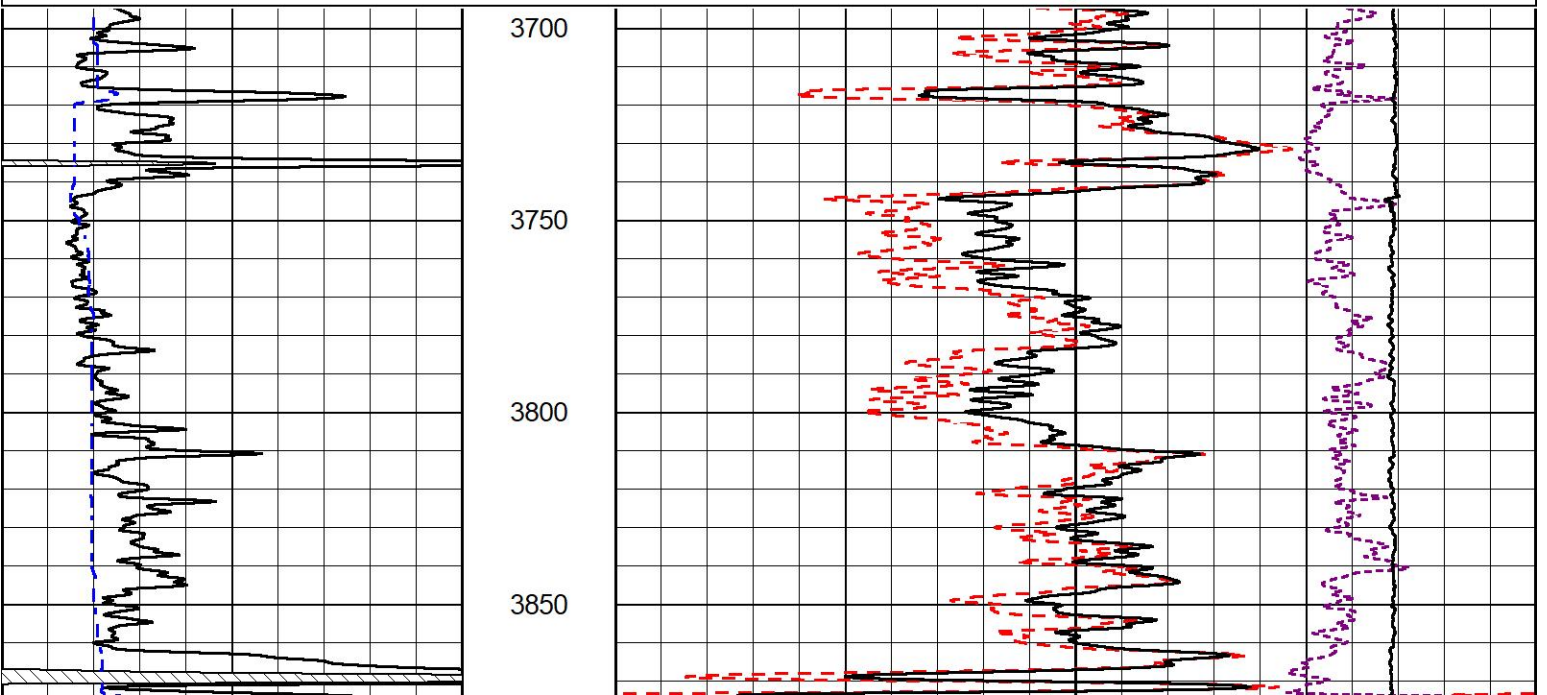


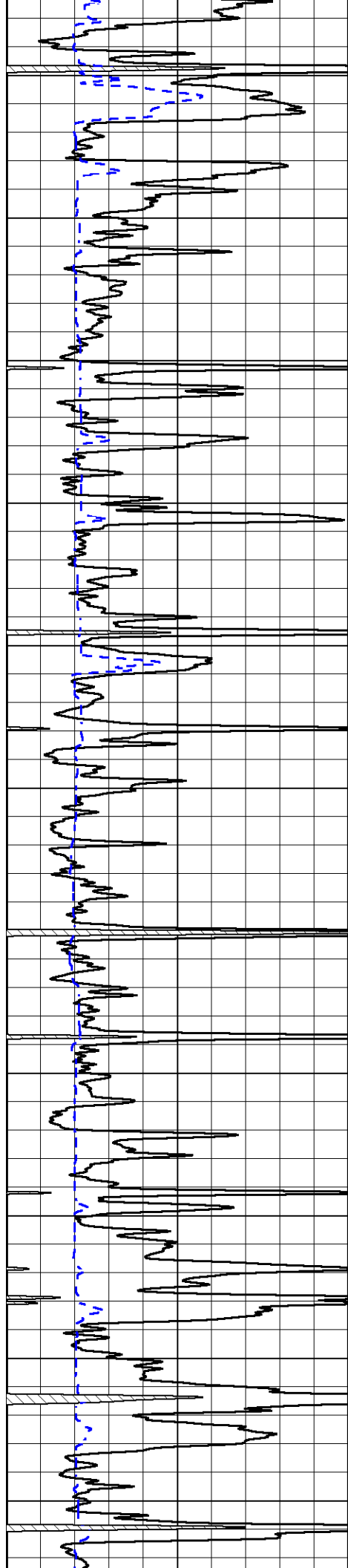
2" SCALE BULK DENSITY

MAIN PASS

Database File american_warrior_shriwise #1-35.db
 Dataset Pathname STKML/pass3.3
 Presentation Format _cdl
 Dataset Creation Fri Jul 07 08:11:12 2023
 Charted by Depth in Feet scaled 1:600

0	Gamma Ray (GAPI)	150	30	Compensated Density (pu)	-10	
6	Caliper (in)	16	2	Bulk Density (g/cc)	3	
			10000	Line Tension (lb)	0	
				-0.25	Correction (g/cc)	0.25





3900

3950

4000

4050

4100

4150

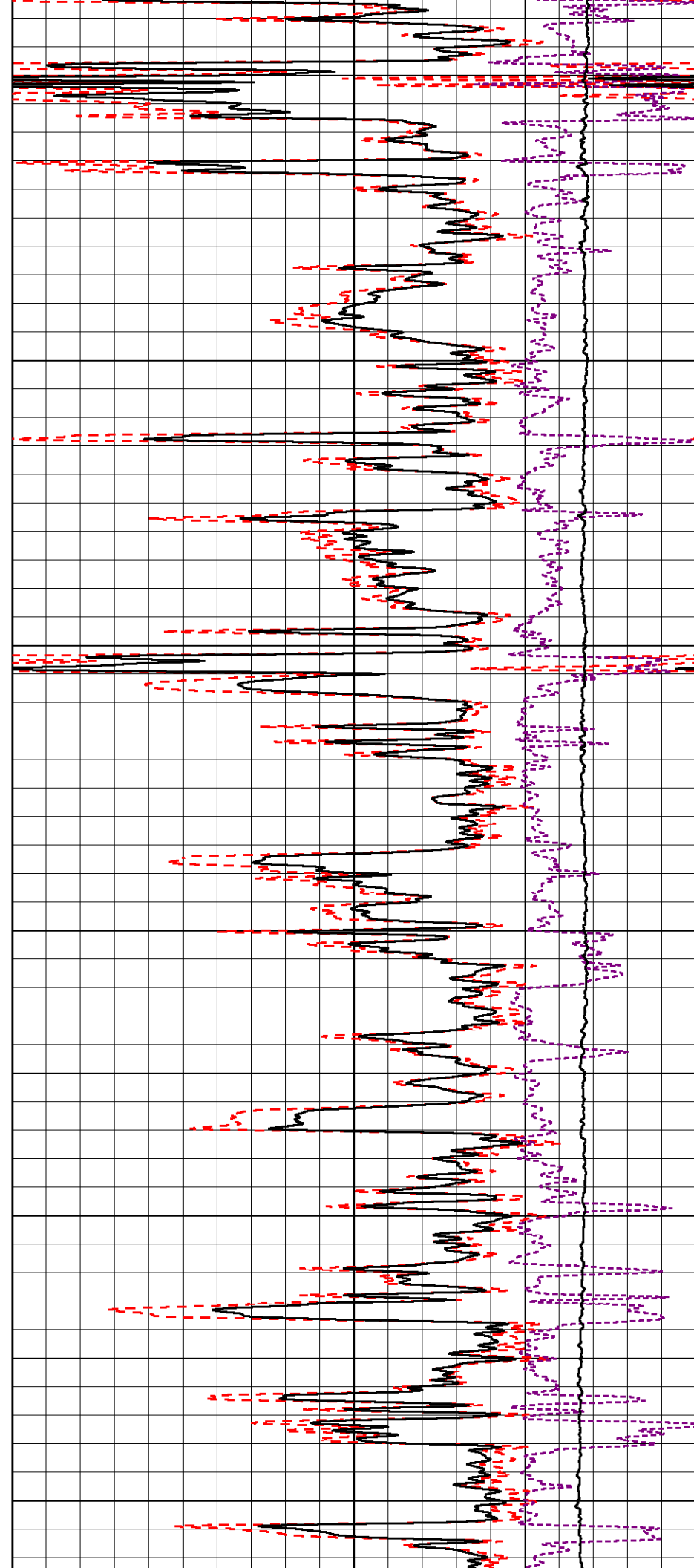
4200

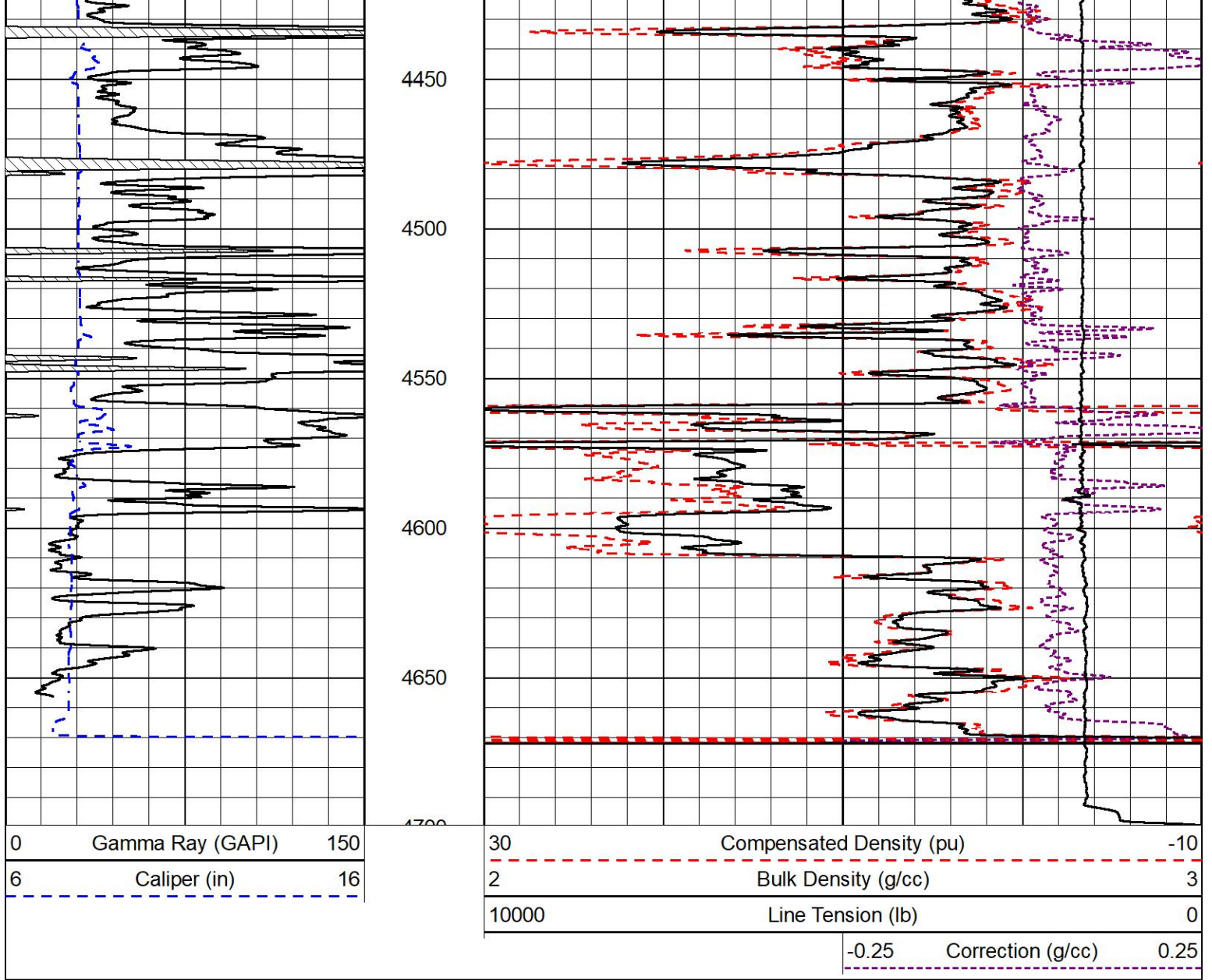
4250

4300

4350

4400



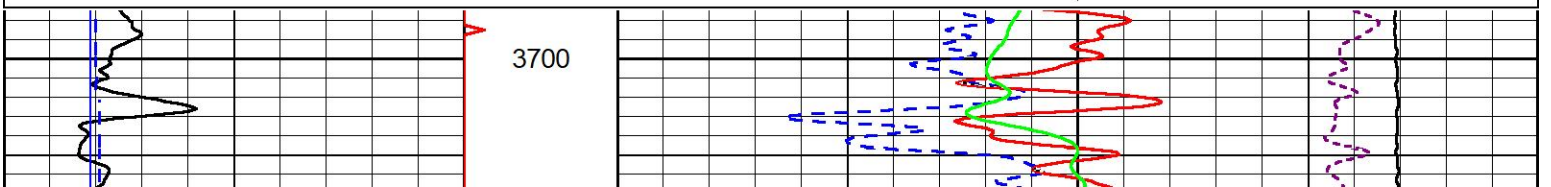


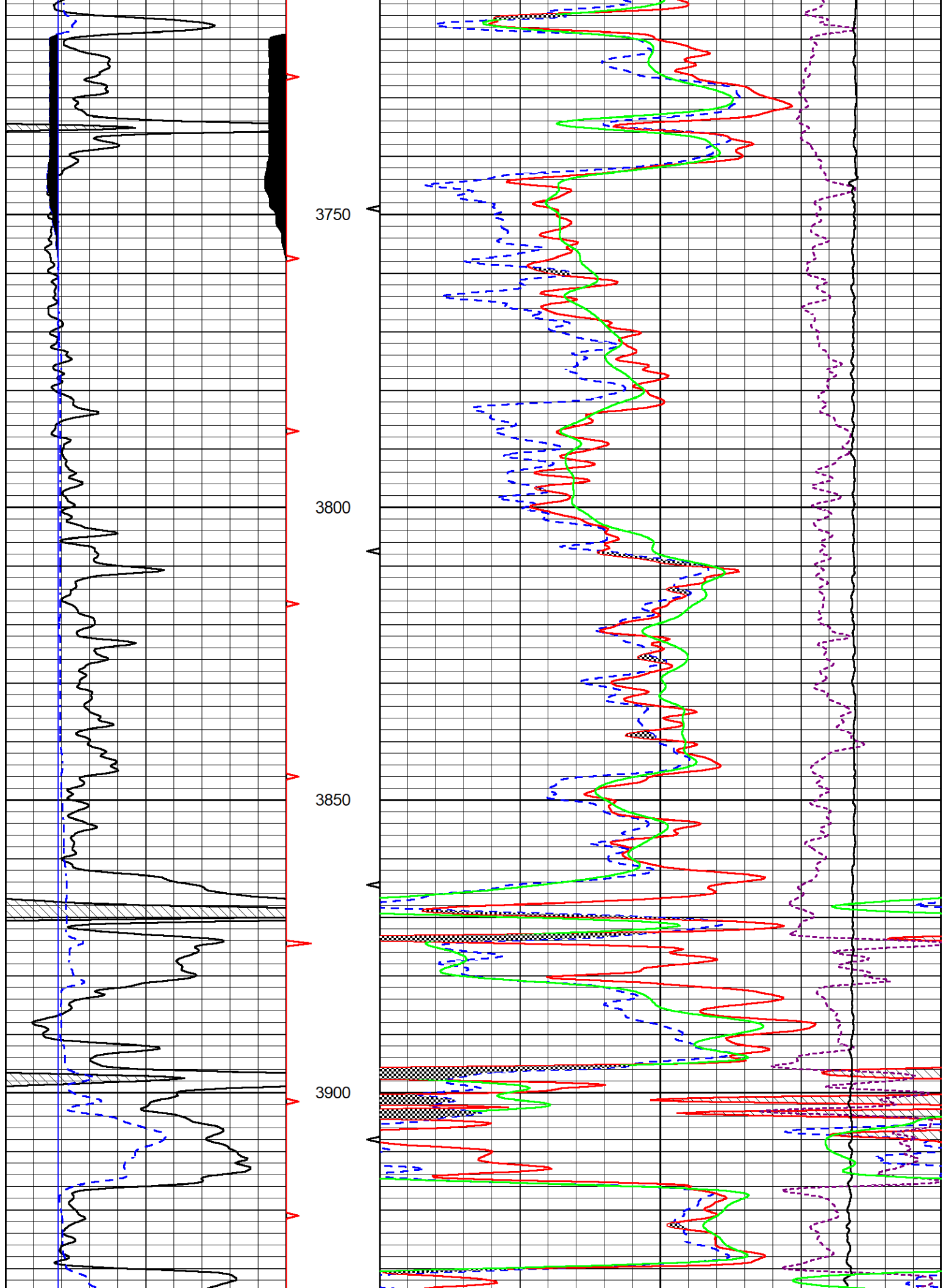
DETAIL SECTION

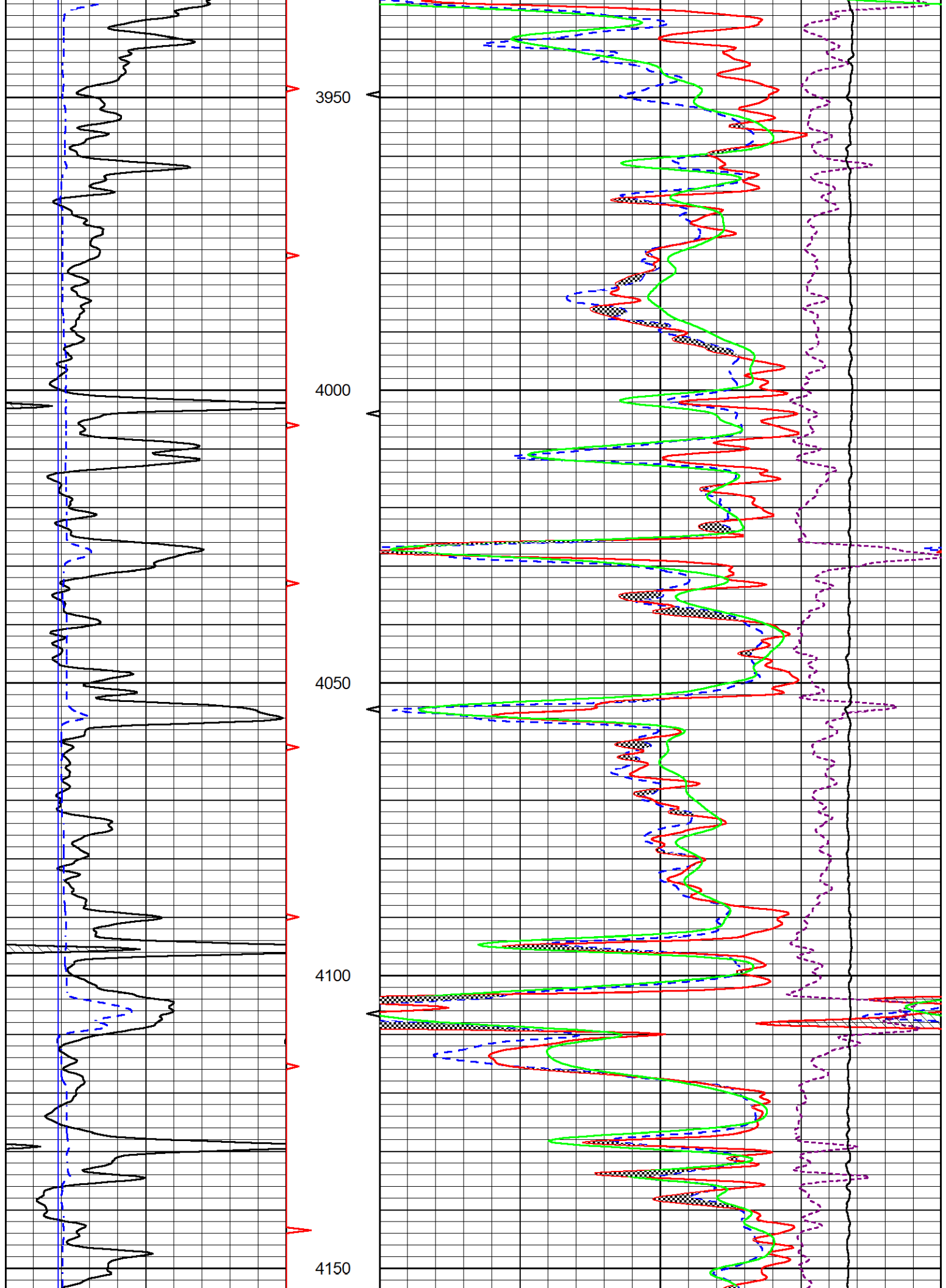
MAIN PASS

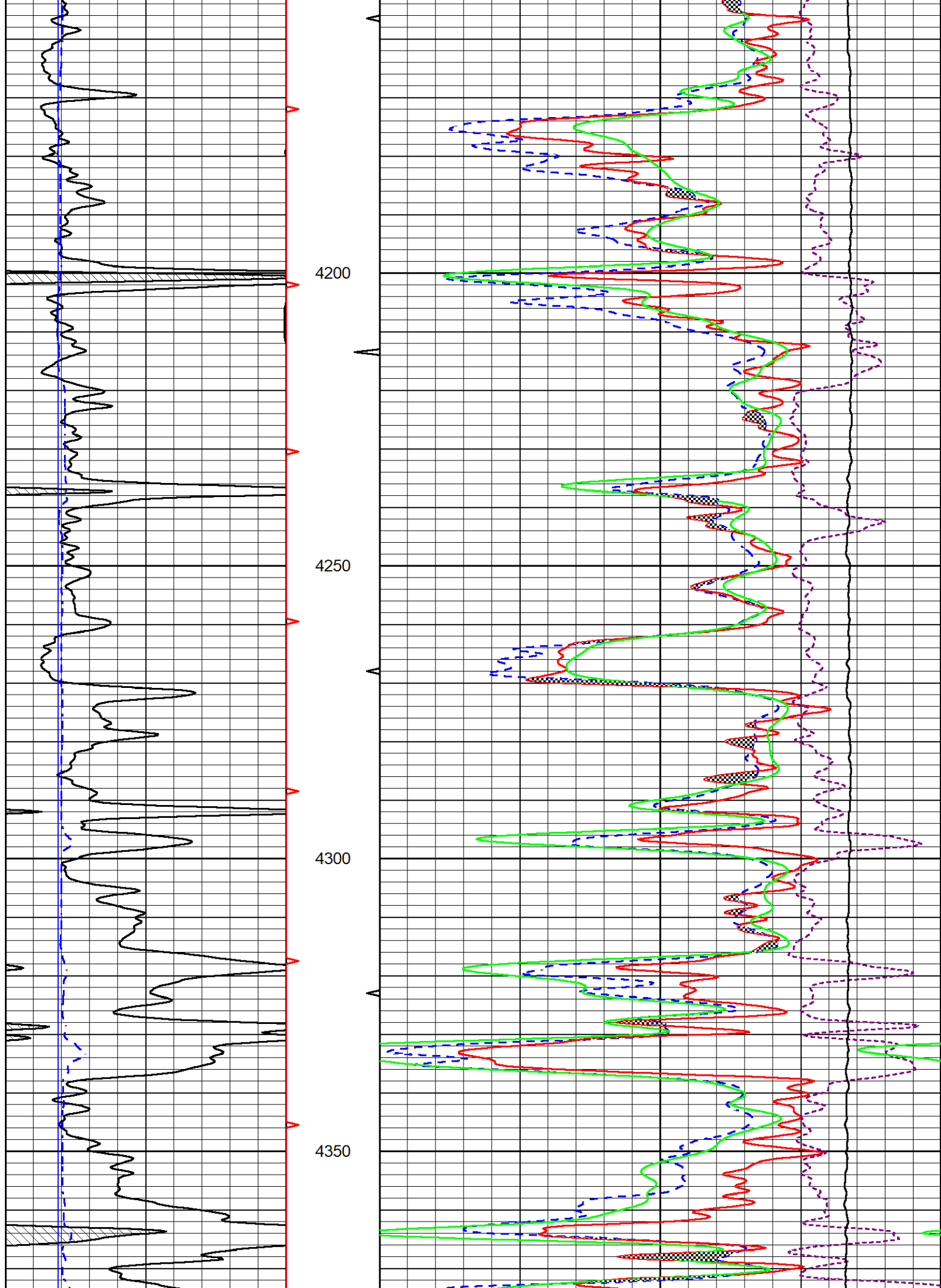
Database File american_warrior_shriwise #1-35.db
 Dataset Pathname STKML/pass3.1
 Presentation Format _CNDLS~1
 Dataset Creation Fri Jul 07 09:04:45 2023
 Charted by Depth in Feet scaled 1:240

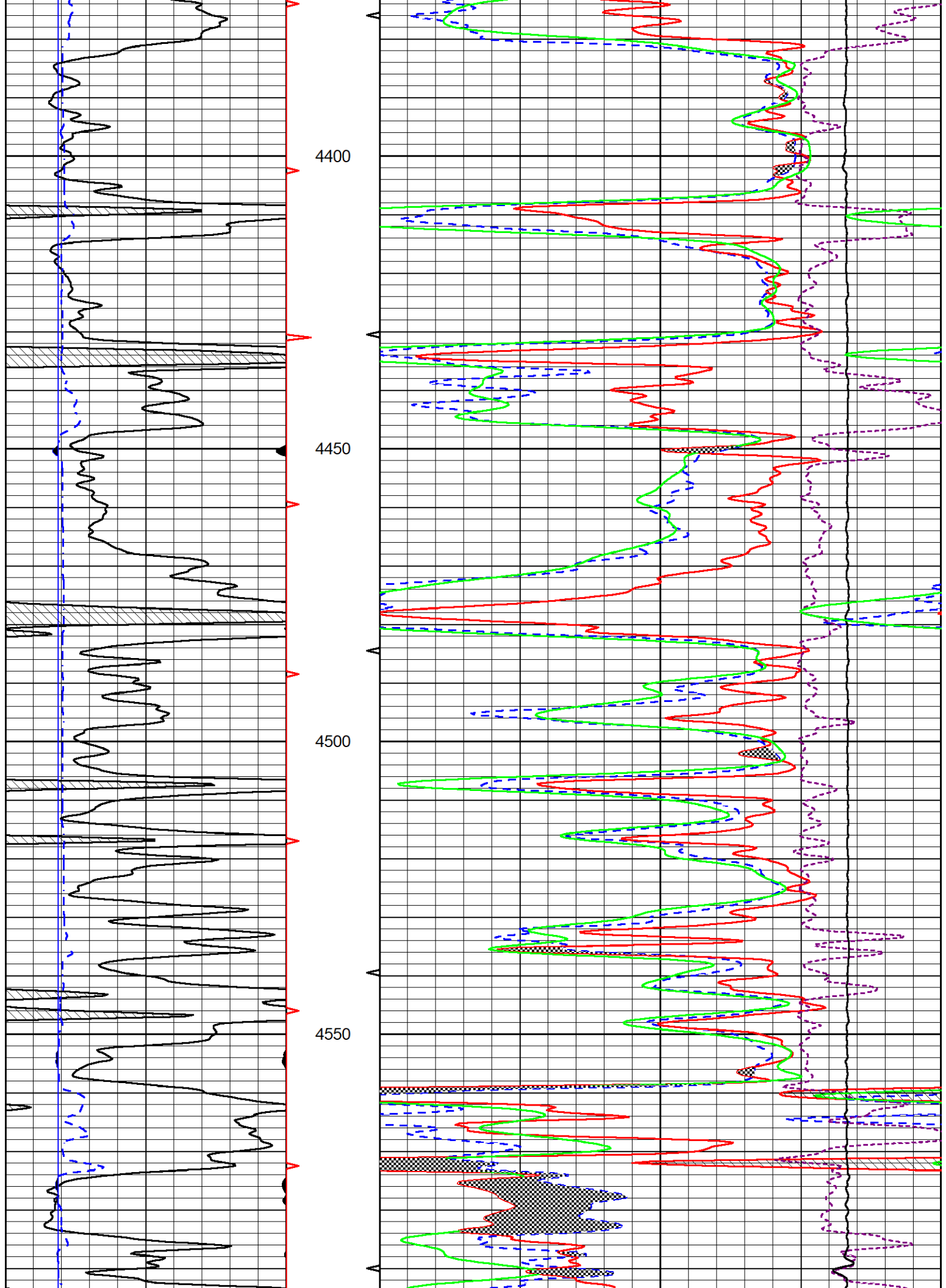
0	Gamma Ray (GAPI)	150	30	Compensated Neutron (pu)	-10
6	Caliper (in)	16	30	Compensated Density (pu)	-10
2.875	DCAL (in)	7.875	10000	Line Tension (lb)	0
			30	spor (pu)	-10
				-0.25 Correction (g/cc)	0.25

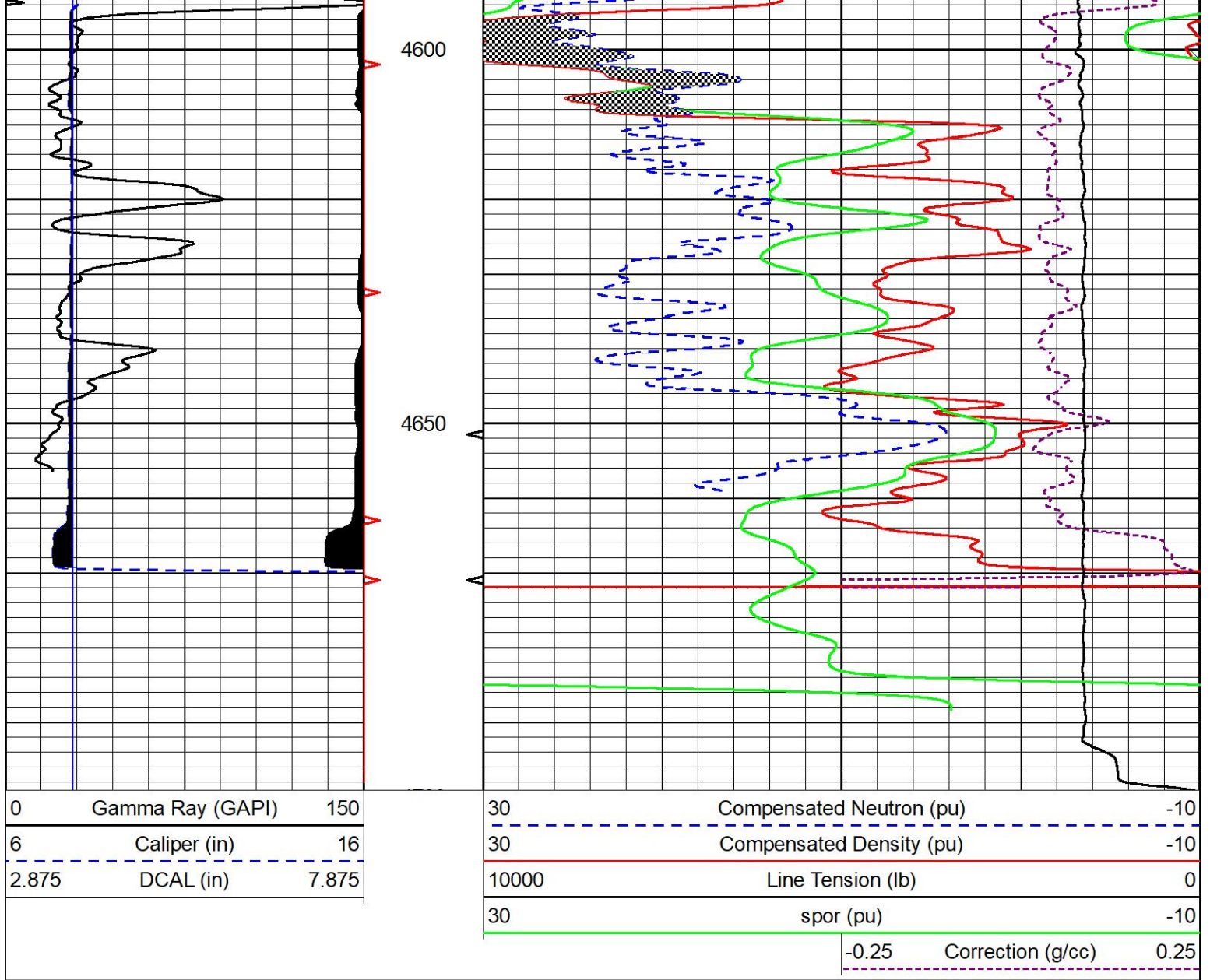












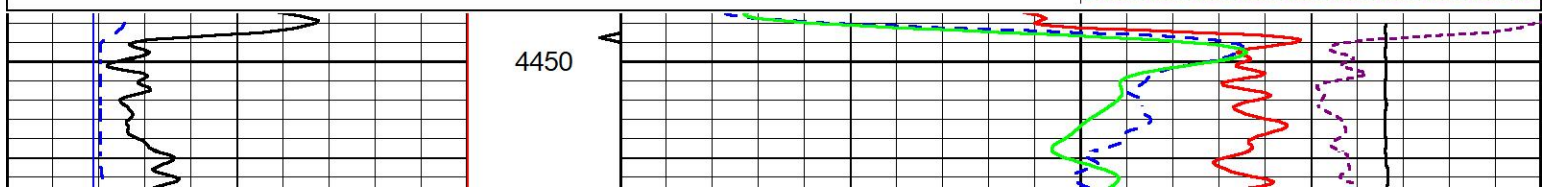
MIDWEST WIRELINE

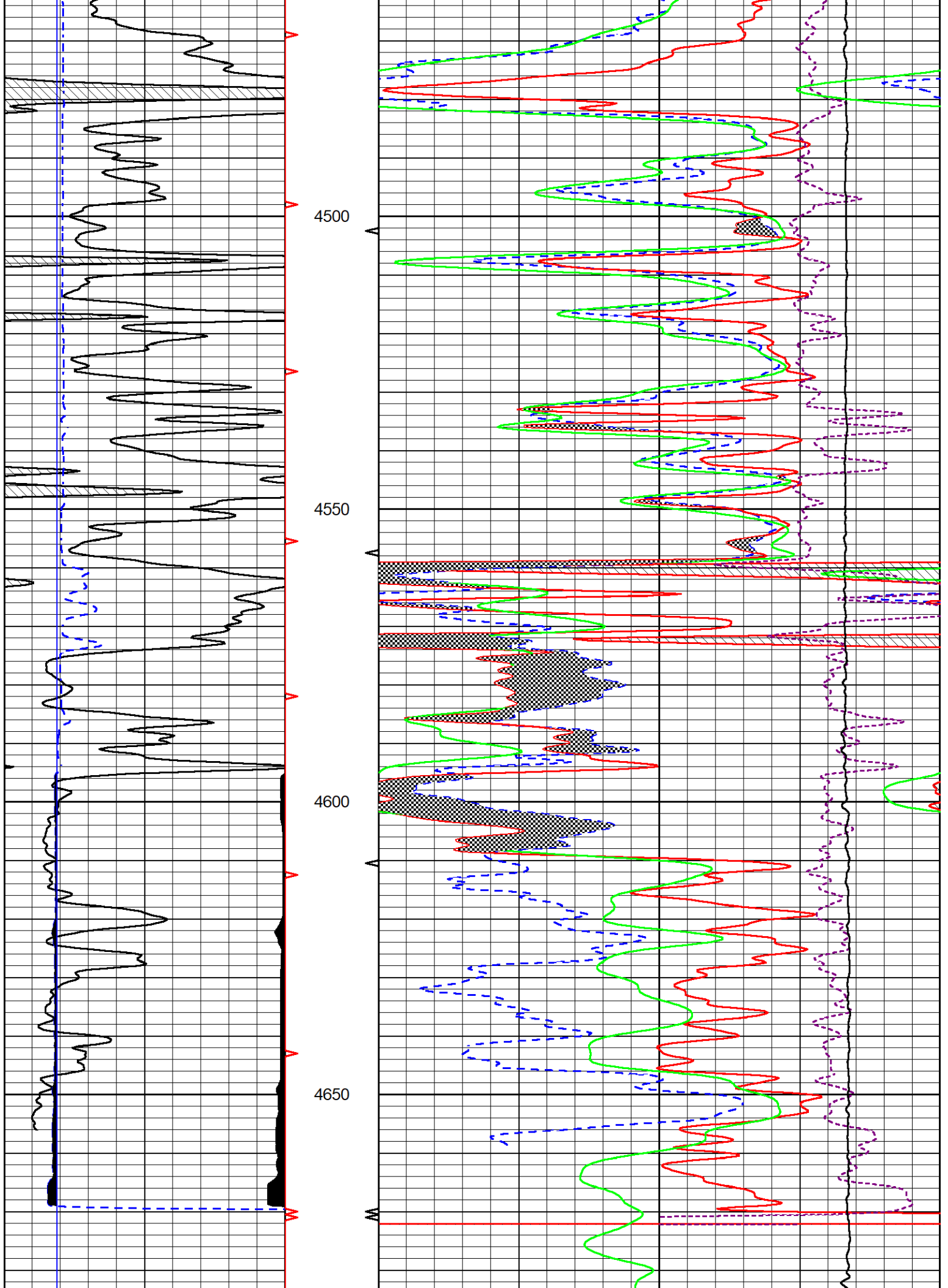
REPEAT SECTION

REPEAT PASS

Database File american_warrior_shriwise #1-35.db
 Dataset Pathname STKML/pass2.1
 Presentation Format _CNDLS~1
 Dataset Creation Fri Jul 07 08:21:41 2023
 Charted by Depth in Feet scaled 1:240

0	Gamma Ray (GAPI)	150	30	Compensated Neutron (pu)	-10	
6	Caliper (in)	16	30	Compensated Density (pu)	-10	
2.875	DCAL (in)	7.875	10000	Line Tension (lb)	0	
			30	spor (pu)	-10	
				-0.25	Correction (g/cc)	0.25





0	Gamma Ray (GAPI)	150	30	Compensated Neutron (pu)	-10
6	Caliper (in)	16	30	Compensated Density (pu)	-10
2.875	DCAL (in)	7.875	10000	Line Tension (lb)	0
			30	spor (pu)	-10
				-0.25	Correction (g/cc) 0.25

Calibration Report	
Database File	american warrior_shriwise #1-35.db
Dataset Pathname	STKML/pass3.1
Dataset Creation	Fri Jul 07 09:04:45 2023

Dual Induction Calibration Report

Serial-Model:	502 HT-M&W
Surface Cal Performed:	

Loop:	Readings		References			Results	
	Air	Loop	Air	Loop		m	b
Deep	83.639	487.104	0.000	255.800	mmho/m	0.454	-35.000
Medium	113.335	1585.690	0.000	255.800	mmho/m	0.340	-14.000

Microlog Calibration Report

Serial-Model:	401-PSIML
Performed:	Mon Jun 5 16:37:07 2023

	Readings		References			Results	
	Zero	Cal	Zero	Cal		m	b
Normal	0.0000	1.0000	0.0000	1.0000	Ohm-m	16500.0000	0.0000
Inverse	0.0000	1.0000	0.0000	1.0000	Ohm-m	15000.0000	0.2500
Caliper	1.0052	1.0858	5.0000	16.5000	in	142.7190	-138.8800

Compensated Density Calibration Report

Serial-Model:	307-11-M&W
Source / Verifier:	20762B / 2ci
Master Calibration Performed:	Tue Jun 6 21:48:20 2023
Before Survey Verification Performed:	
After Survey Verification Performed:	

Master Calibration						
	Density		Far Detector	Near Detector		
Magnesium	1.755	g/cc	3689.70	4749.82	cps	
Aluminum	2.590	g/cc	822.19	3221.38	cps	
	Spine Angle = 75.50		Density/Spine Ratio = 0.538			
	Size		Reading			
Small Ring	6.00	in	1.16			
Large Ring	18.00	in	1.01			

Compensated Neutron Calibration Report

Serial Number: 207-MW
 Tool Model: M&W

CALIBRATION

Detector	Readings	Target	Normalization
Short Space	6240.00 cps	1000.00 cps	1.6025
Long Space	460.00 cps	1000.00 cps	1.9500

Gamma Ray Calibration Report

Serial Number: 105
 Tool Model: M&W
 Performed: Fri Dec 3 15:10:46 2021

Calibrator Value: 500.0 GAPI

Background Reading: 24.0 cps
 Calibrator Reading: 637.0 cps

Sensitivity: 0.5500 GAPI/cps



Company American Warrior , Inc
Well Shriwise #1-35
Field Jetmore
County Hodgeman
State Kansas