



MICRORESISTIVITY

MIDWEST WIRELINE

Company American Warrior , Inc  
Well Shriwise #1-35  
Field Jetmore  
County Hodgeman  
State Kansas

Company American Warrior , Inc  
Well Shriwise #1-35  
Field Jetmore  
County Hodgeman State Kansas

Location: API #: 15-083-22028-00-00  
2120 FNL & 1076 FEL  
SEC 35 TWP 22S RGE 24W  
Permanent Datum Ground Level Elevation 2316  
Log Measured From Kelly Bushing  
Drilling Measured From Kelly Bushing  
Other Services  
CNL/CDL  
DIL/BHCS  
Elevation  
K.B. 2324  
D.F.  
G.L. 2316

Date	07/07/2023
Run Number	One
Depth Driller	4695
Depth Logger	4694
Bottom Logged Interval	4693
Top Log Interval	3700
Casing Driller	8:625 @ 226
Casing Logger	226
Bit Size	7.875
Type Fluid in Hole	Chemical Mud
Salinity :ppm CL	6700
Density / Viscosity	9.0 49
pH / Fluid Loss	11.0 9.2
Source of Sample	Flowline
Rm @ Meas. Temp	0.75 @ 72
Rmt @ Meas. Temp	0.56 @ 72
Rmc @ Meas. Temp	1.01 @ 72
Source of Rmf/ Rmc	Charts
Rm @ BHT	0.44 @ 123
Operating Rig Time	5 Hours
Max Rec. Temp. F	123
Equipment Number	P-24
Location	Hays
Recorded By	Justin Trout
Witnessed By	Jason Alm

<<< Fold Here >>>

All interpretations are opinions based on inferences from electrical or other measurements and Midwest Wireline LLC cannot and does not guarantee the accuracy or correctness of any interpretation, and Midwest Wireline LLC will not be liable or responsible for any loss, costs, damages, or expenses incurred or sustained by anyone resulting from any interpretation made by any of our officers, agents or employees.

Comments

N/A DENOTES NOT AVAILABLE OR NON-APPLICABLE.

Jetmore, Ks,  
1 West, 3/4 North  
West and South into at tank battery

Log Measured From: Kelly Bushing 8 Ft. Above Permanent Datum


THANK YOU FOR USING MIDWEST WIRELINE LLC  
785-625-3858

Your Midwest Wireline Crew

Engineer: Justin Trout  
Operator:  
Operator:  
Operator:

This Log Record Was Witnessed By

Primary Witness: Jason Alm  
Secondary Witness:  
Secondary Witness:  
Secondary Witness:

Sensor	Offset (ft)	Schematic	Description	Length (ft)	O.D. (in)	Weight (lb)
GR	40.33		GR-M&W (105)	3.00	3.50	50.00
CNLSC CNSSC	37.23 36.48		CNT-M&W (207-MW)	5.00	3.50	100.00
LSD DCAL SSD	28.18 28.17 27.68		CDL-M&W (307-11)	8.50	4.00	250.00
ML-PSIML (401)			7.58	4.00	65.00	
MCAL MI MN	19.58 19.58 19.58					
RLL3F RLL3	15.50 15.50					
DIL-M&W (502 HT)			18.25	3.50	220.00	
CILD	8.33					
CILM	4.50					
SP	0.20					

Dataset: american warrior\_shriwise #1-35.db: field/well/STKML/pass3.1  
 Total length: 42.33 ft  
 Total weight: 685.00 lb  
 O.D.: 4.00 in

# Log Variables

DatabaseC:\ProgramData\Warrior\Data\american\_warrior\_shriwise #1-35.db  
 Dataset field/well/STKML/pass3.1/\_vars\_

## Top - Bottom

A	BOREID in	BOTTEMP degF	CASEOD in	CASETHCK in	FLUIDDEN g/cc	M	MATRXDEN g/cc
1	7.875	123	5.5	0	1	2	2.71
NPORSEL	PERFS	SNDERR mmho/m	SNDERRM mmho/m	SPSHIFT mV	SRFTEMP degF	SZCOR	TDEPTH ft
Limestone	No	3	5	282	72	Off	4694

## Variable Description

A : Cement Factor (a)  
 BOREID : Borehole I.D.  
 BOTTEMP : Bottom Hole Temperature  
 CASEOD : Casing O.D.  
 CASETHCK : Casing Thickness  
 FLUIDDEN : Fluid Density  
 M : Cement Exp (m)  
 MATRXDEN : Matrix Density

NPORSEL : Neutron Porosity Curve Select  
 PERFS : Perforation Flag  
 SNDERR : Deep Sonde Error Correction  
 SNDERRM : Medium Sonde Error Correction  
 SPSHIFT : S.P. Baseline Offset  
 SRFTEMP : Surface Temperature  
 SZCOR : CN Size Cor. ?  
 TDEPTH : Total Depth



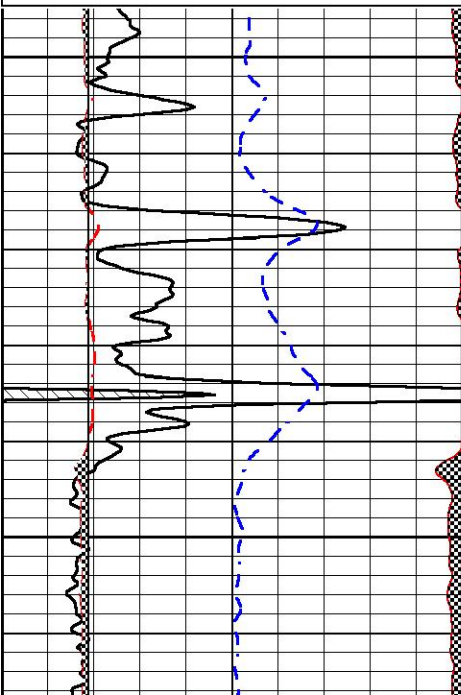
## DETAIL SECTION

### MAIN PASS

Database File      american\_warrior\_shriwise #1-35.db  
 Dataset Pathname  STKML/pass3.1  
 Presentation Format  \_micro  
 Dataset Creation   Fri Jul 07 09:04:45 2023  
 Charted by         Depth in Feet scaled 1:240

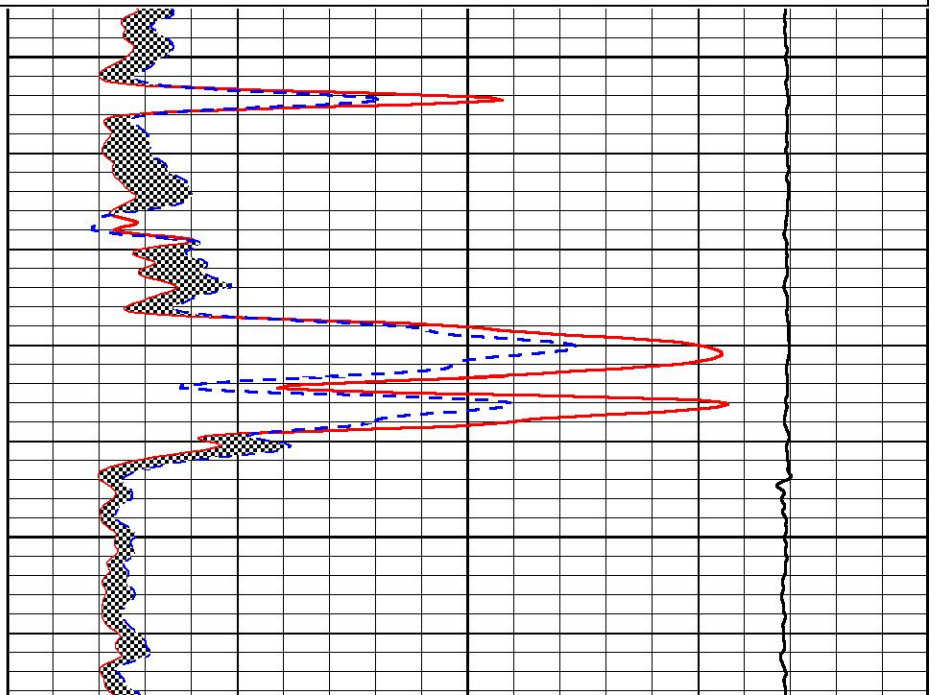
0	Gamma Ray (GAPI)	150
6	Caliper (in)	16
2.875	mcal (in)	7.875
-200	sp (mV)	0

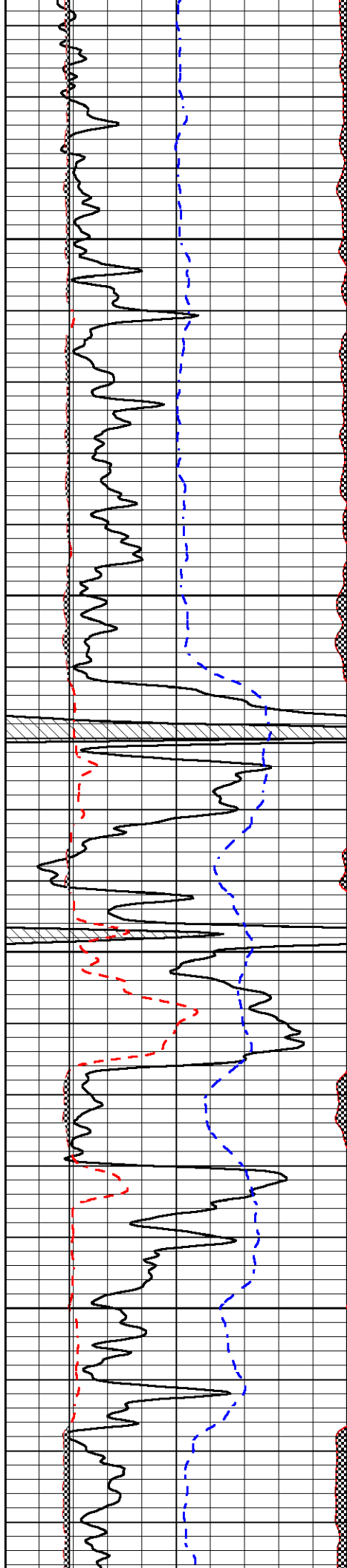
0	Micro Inverse 1 X 1 (Ohm-m)	40
0	Micro Normal 2" (Ohm-m)	40
10000	Line Weight (lb)	0



3700

3750



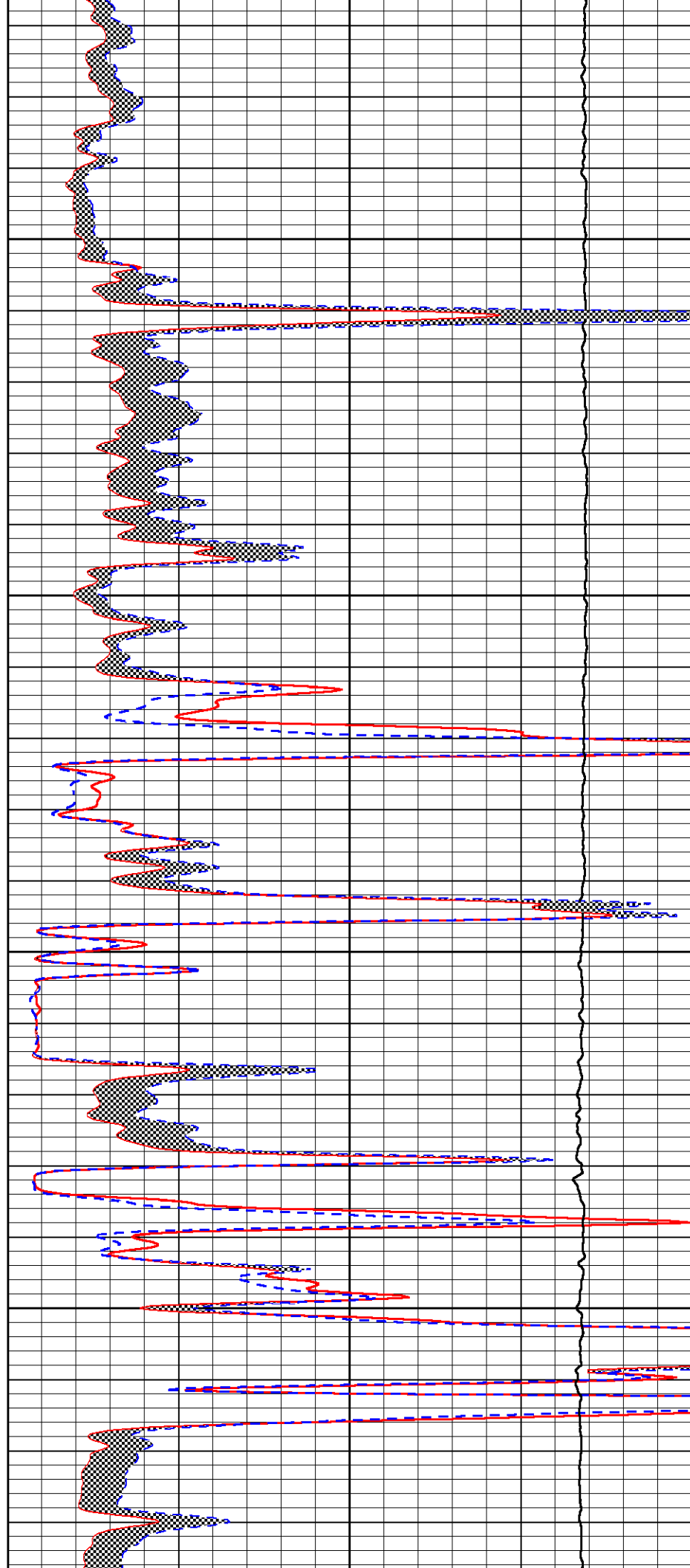


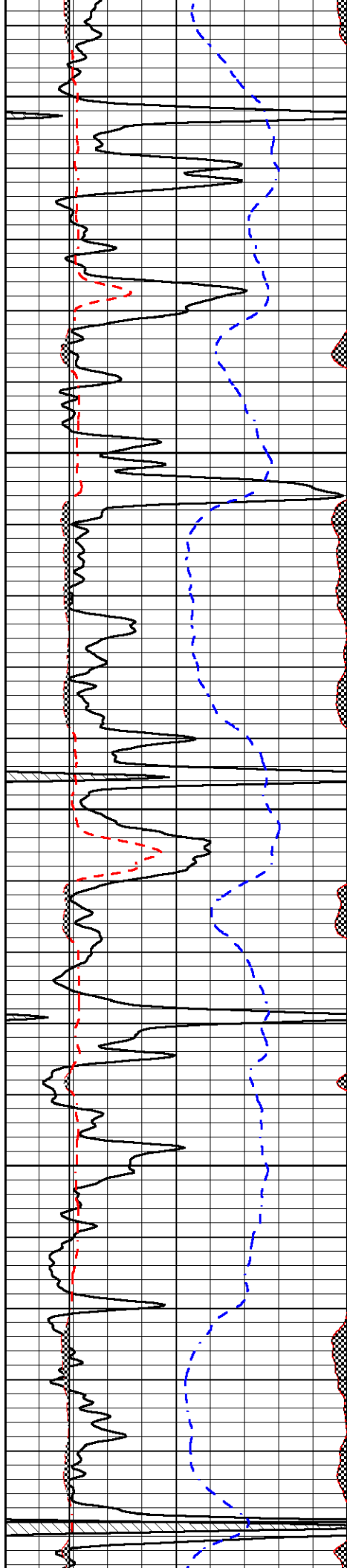
3800

3850

3900

3950





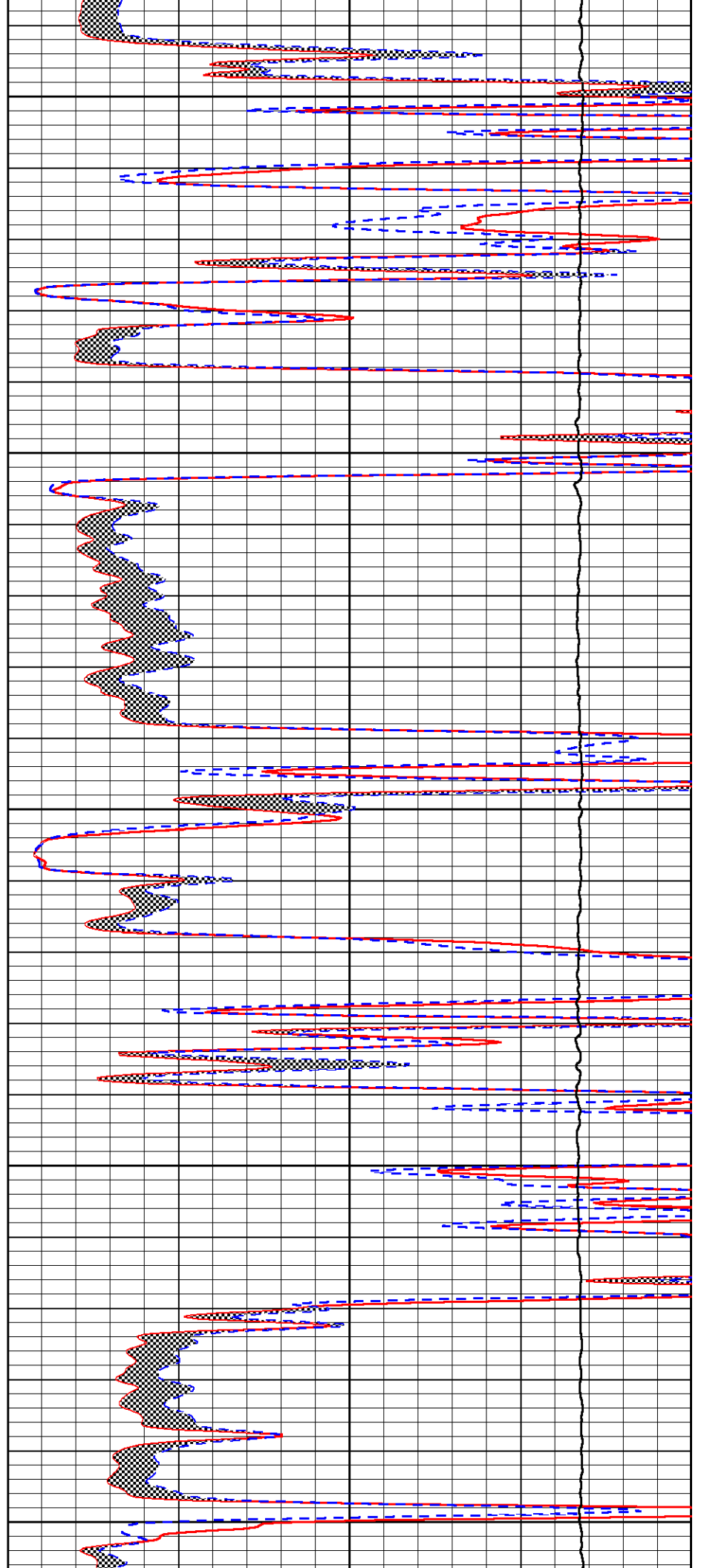
4000

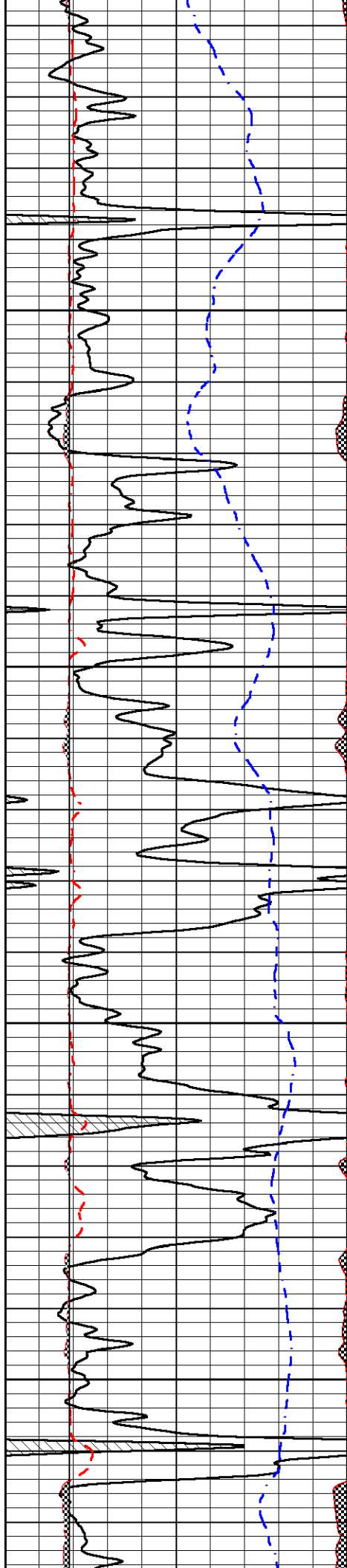
4050

4100

4150

4200



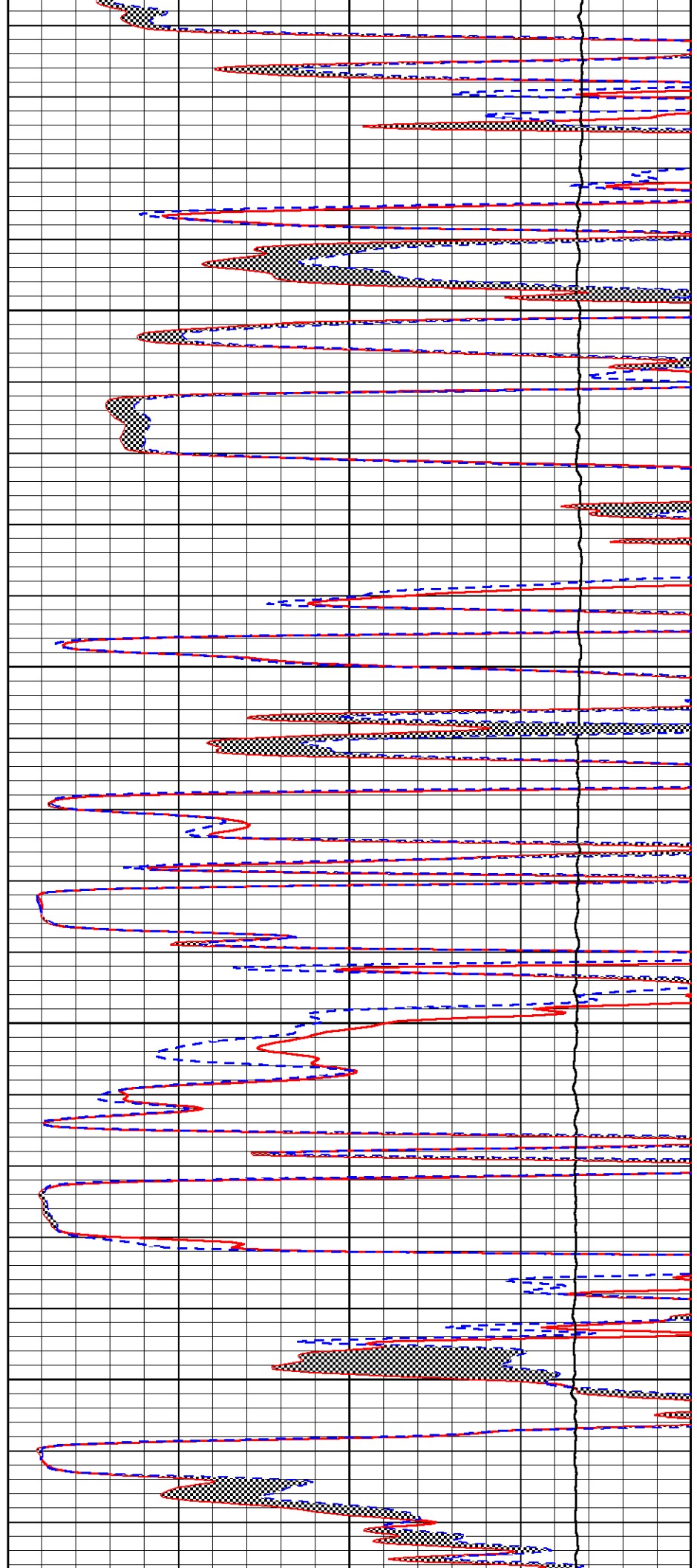


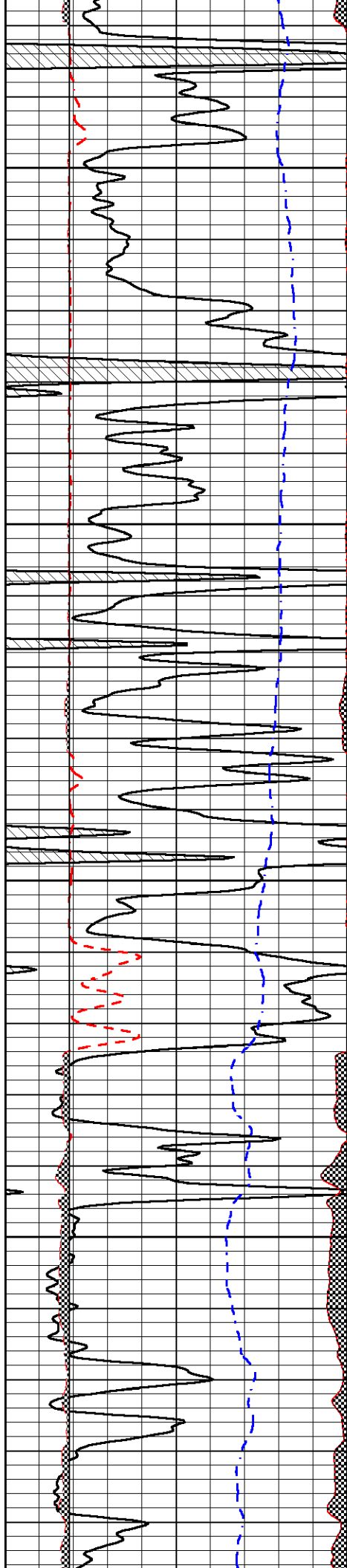
4250

4300

4350

4400



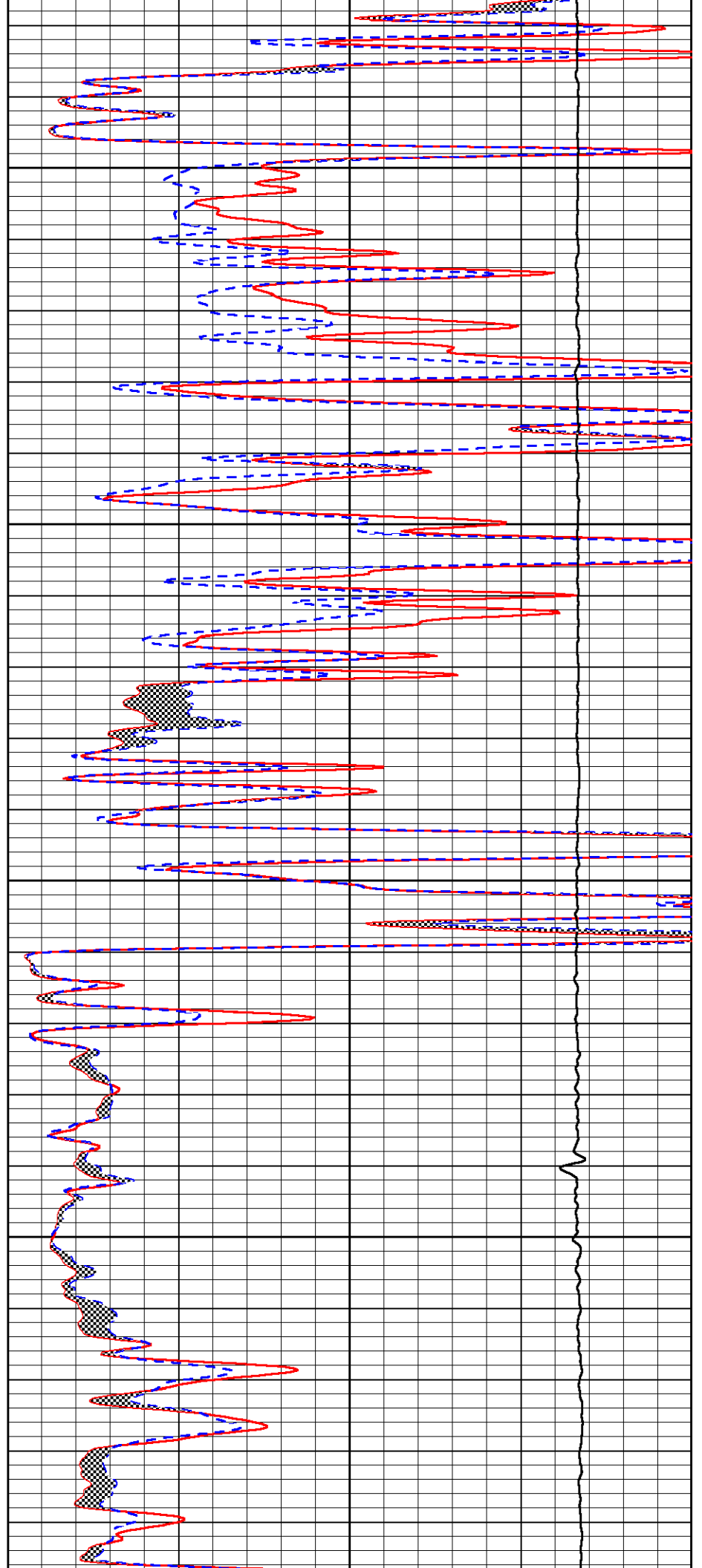


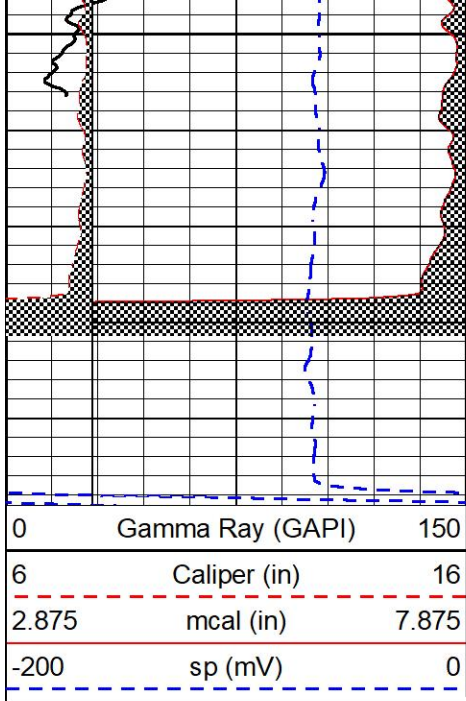
4450

4500

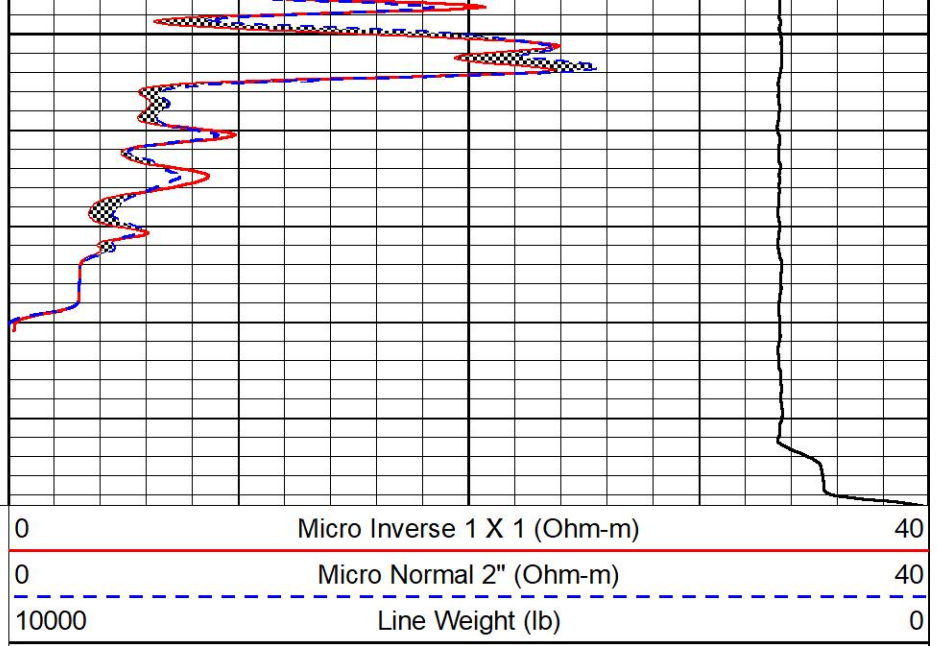
4550

4600





4650

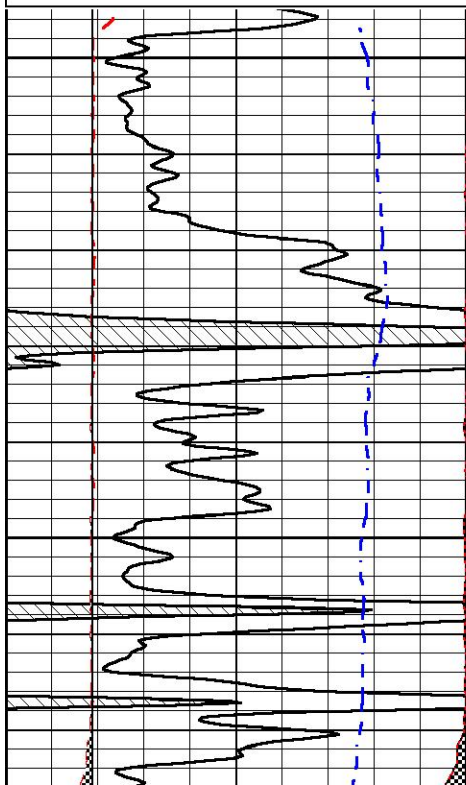
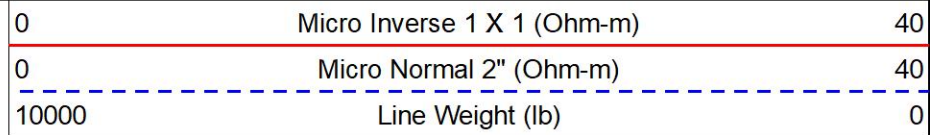
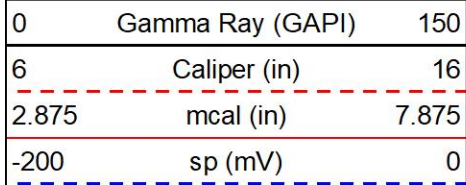


MIDWEST WIRELINE

## REPEAT SECTION

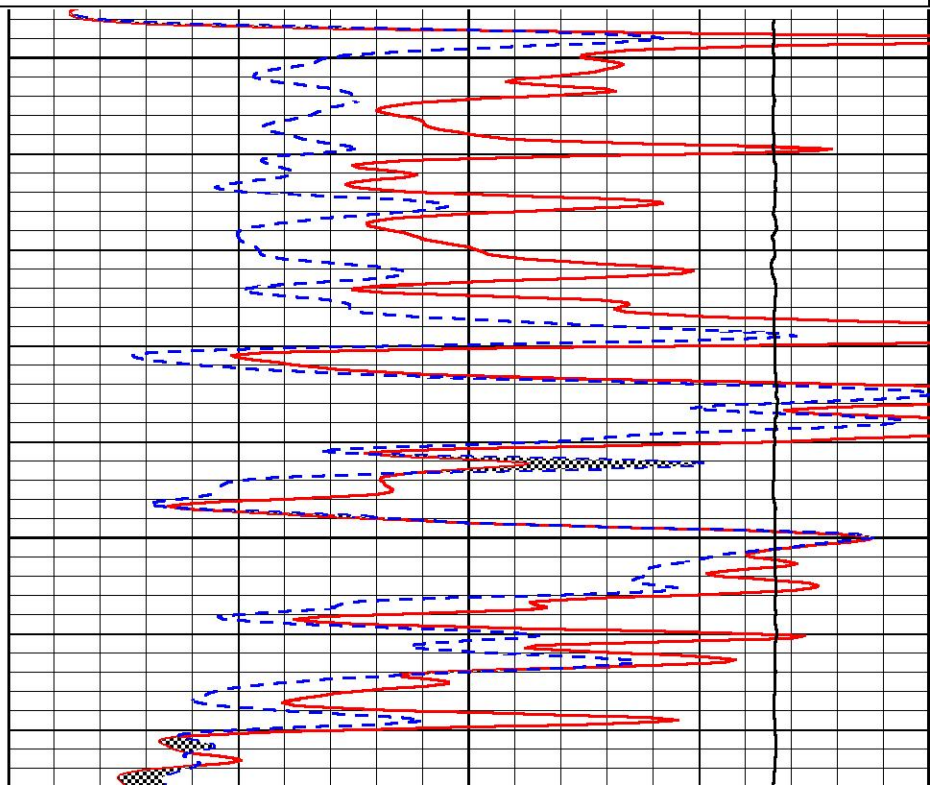
### REPEAT PASS

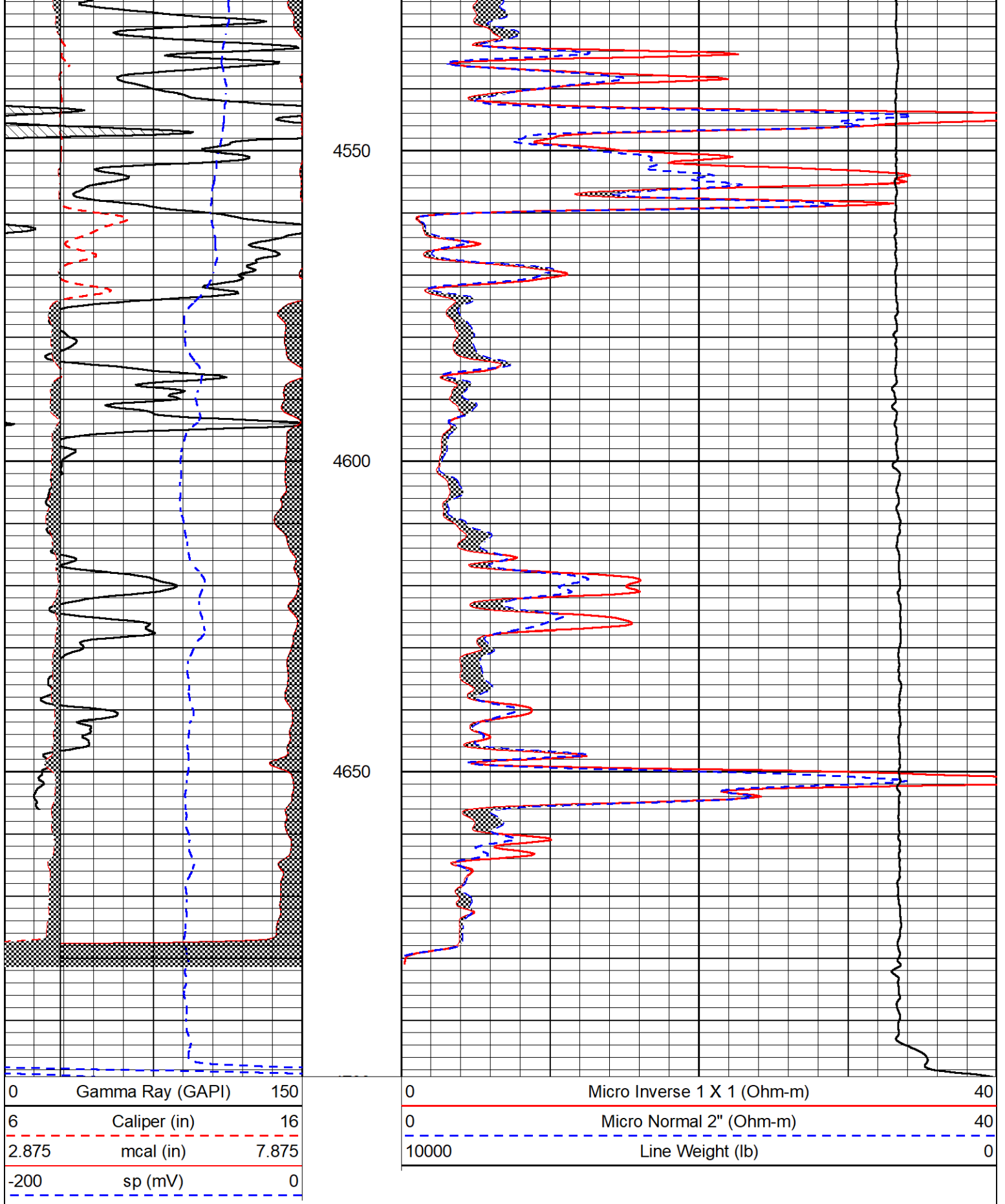
Database File      american\_warrior\_shriwise #1-35.db  
 Dataset Pathname    STKML/pass2.1  
 Presentation Format    \_micro  
 Dataset Creation      Fri Jul 07 08:21:41 2023  
 Charted by            Depth in Feet scaled 1:240



4450

4500





Calibration Report

Database File      american warrior\_shriwise #1-35.db  
 Dataset Pathname      STKML/pass3.1  
 Dataset Creation      Fri Jul 07 09:04:45 2023

Serial-Model: 502 HT-M&W  
 Surface Cal Performed:

Loop:	Readings		References			Results	
	Air	Loop	Air	Loop		m	b
Deep	83.639	487.104	0.000	255.800	mmho/m	0.454	-35.000
Medium	113.335	1585.690	0.000	255.800	mmho/m	0.340	-14.000

Microlog Calibration Report

Serial-Model: 401-PSIML  
 Performed: Mon Jun 5 16:37:07 2023

	Readings		References			Results	
	Zero	Cal	Zero	Cal		m	b
Normal	0.0000	1.0000	0.0000	1.0000	Ohm-m	16500.0000	0.0000
Inverse	0.0000	1.0000	0.0000	1.0000	Ohm-m	15000.0000	0.2500
Caliper	1.0052	1.0858	5.0000	16.5000	in	142.7190	-138.8800

Compensated Density Calibration Report

Serial-Model: 307-11-M&W  
 Source / Verifier: 20762B / 2ci  
 Master Calibration Performed: Tue Jun 6 21:48:20 2023  
 Before Survey Verification Performed:  
 After Survey Verification Performed:

Master Calibration

	Density		Far Detector	Near Detector	
Magnesium	1.755	g/cc	3689.70	4749.82	cps
Aluminum	2.590	g/cc	822.19	3221.38	cps
Spine Angle = 75.50			Density/Spine Ratio = 0.538		
	Size		Reading		
Small Ring	6.00	in	1.16		
Large Ring	18.00	in	1.01		

Compensated Neutron Calibration Report

Serial Number: 207-MW  
 Tool Model: M&W

CALIBRATION

Detector	Readings	Target	Normalization
Short Space	6240.00 cps	1000.00 cps	1.6025
Long Space	460.00 cps	1000.00 cps	1.9500

Gamma Ray Calibration Report

Serial Number: 105  
 Tool Model: M&W  
 Performed: Fri Dec 3 15:10:46 2021

Calibrator Value:	500.0	GAPI
Background Reading:	24.0	cps
Calibrator Reading:	637.0	cps
Sensitivity:	0.5500	GAPI/cps



MIDWEST WIRELINE

Company	American Warrior , Inc
Well	Shriwise #1-35
Field	Jetmore
County	Hodgeman
State	Kansas