



MIDWEST WIRELINE

BOREHOLE COMPENSATED SONIC

Company American Warrior, Inc
Well Shriwise #1-35
Field Jetmore
County Hodgeman **State** Kansas

Company American Warrior, Inc
 Well Shriwise #1-35
 Field Jetmore
 County Hodgeman
 State Kansas

Location: API #: 15-083-22028-00-00
 2120 FNL & 1076 FEL
 SEC 35 TWP 22S RGE 24W
 Permanent Datum Ground Level Elevation 2316
 Log Measured From Kelly Bushing
 Drilling Measured From Kelly Bushing
 Other Services
 CNL/CDL
 MEL/DIL
 Elevation
 K.B. 2324
 D.F.
 G.L. 2316

| | | | | | | | |
|------------------------|--------------|---------------|-----|-------|------|------|-----|
| Date | 07/07/2023 | | | | | | |
| Run Number | One | | | | | | |
| Type Log | BHCS | | | | | | |
| Depth Driller | 4695 | | | | | | |
| Depth Logger | 4694 | | | | | | |
| Bottom Logged Interval | 4682 | | | | | | |
| Top Logged Interval | 200 | | | | | | |
| Type Fluid In Hole | Chemical Mud | | | | | | |
| Salinity, PPM CL | 6700 | | | | | | |
| Density | 9.0 | | | | | | |
| Level | Full | | | | | | |
| Max. Rec. Temp. F | 123 | | | | | | |
| Operating Rig Time | 5 Hours | | | | | | |
| Equipment -- Location | P-24 Hays | | | | | | |
| Recorded By | Justin Trout | | | | | | |
| Witnessed By | Jason Alm | | | | | | |
| Borehole Record | | Casing Record | | | | | |
| Run No. | Bit | From | To | Size | Wgt. | From | To |
| One | 12.25 | 0 | 226 | 8.625 | 23 | 0 | 226 |
| Two | 7.875 | 226 | TD | | | | |

<<< Fold Here >>>

All interpretations are opinions based on inferences from electrical or other measurements and Midwest Wireline LLC cannot and does not guarantee the accuracy or correctness of any interpretation, and Midwest Wireline LLC will not be liable or responsible for any loss, costs, damages, or expenses incurred or sustained by anyone resulting from any interpretation made by any of our officers, agents or employees.

Comments

N/A DENOTES NOT AVAILABLE OR NON-APPLICABLE.

Jetmore, Ks,
 1 West, 3/4 North
 West and South into at tank battery

Log Measured From: Kelly Bushing 8 Ft. Above Permanent Datum

THANK YOU FOR USING MIDWEST WIRELINE LLC
 785-625-3858

| | |
|---|--|
| Your Midwest Wireline Crew | This Log Record Was Witnessed By |
| Engineer: Justin Trout Operator: Operator: Operator: | Primary Witness: Jason Alm Secondary Witness: Secondary Witness: Secondary Witness: |

| | | | | | | |
|----------|-------------|-----------|-------------|-------------|-----------|-------------|
| Case No. | Offset (ft) | Schematic | Description | Length (ft) | O.D. (in) | Weight (lb) |
|----------|-------------|-----------|-------------|-------------|-----------|-------------|

| Sensor | Offset (ft) | Schematic | Description | Length (ft) | O.D. (in) | Weight (lb) |
|--------------|----------------|-----------|------------------------------------|-------------|-----------|-------------|
| | | | CENT-PENGO (3-PENGO) | 4.25 | 3.00 | 70.00 |
| WVF4 WVF1 | 12.25 12.25 | | SLT-PENGO (601) 3 1/2 BHC Sonic | 16.00 | 3.50 | 300.00 |
| WVF3 WVF2 | 10.25 10.25 | | | | | |
| | | | CENT-PENGO (4-PENGO) | 4.25 | 3.00 | 70.00 |

Dataset: american warrior_shriwise #1-35.db: field/well/Sonic/pass3
 Total length: 24.50 ft
 Total weight: 440.00 lb
 O.D.: 3.50 in

Log Variables

DatabaseC:\ProgramData\Warrior\Data\american_warrior_shriwise #1-35.db
 Dataset field/well/STKML/pass3.1/_vars_

Top - Bottom

| | | | | | | | |
|-----------|--------------|------------------|-------------------|----------------|------------------|-------|------------------|
| A | BOREID in | BOTTEMP degF | CASEOD in | CASETHCK in | FLUIDDEN g/cc | M | MATRXDEN g/cc |
| 1 | 7.875 | 123 | 5.5 | 0 | 1 | 2 | 2.71 |
| NPORSEL | PERFS | SNDERR mmho/m | SNDERRM mmho/m | SPSHIFT mV | SRFTEMP degF | SZCOR | TDEPTH ft |
| Limestone | No | 3 | 5 | 282 | 72 | Off | 4694 |

Variable Description

A : Cement Factor (a)
 BOREID : Borehole I.D.
 BOTTEMP : Bottom Hole Temperature
 CASEOD : Casing O.D.
 CASETHCK : Casing Thickness
 FLUIDDEN : Fluid Density
 M : Cement Exp (m)
 MATRXDEN : Matrix Density

NPORSEL : Neutron Porosity Curve Select
 PERFS : Perforation Flag
 SNDERR : Deep Sonde Error Correction
 SNDERRM : Medium Sonde Error Correction
 SPSHIFT : S.P. Baseline Offset
 SRFTEMP : Surface Temperature
 SZCOR : CN Size Cor. ?
 TDEPTH : Total Depth

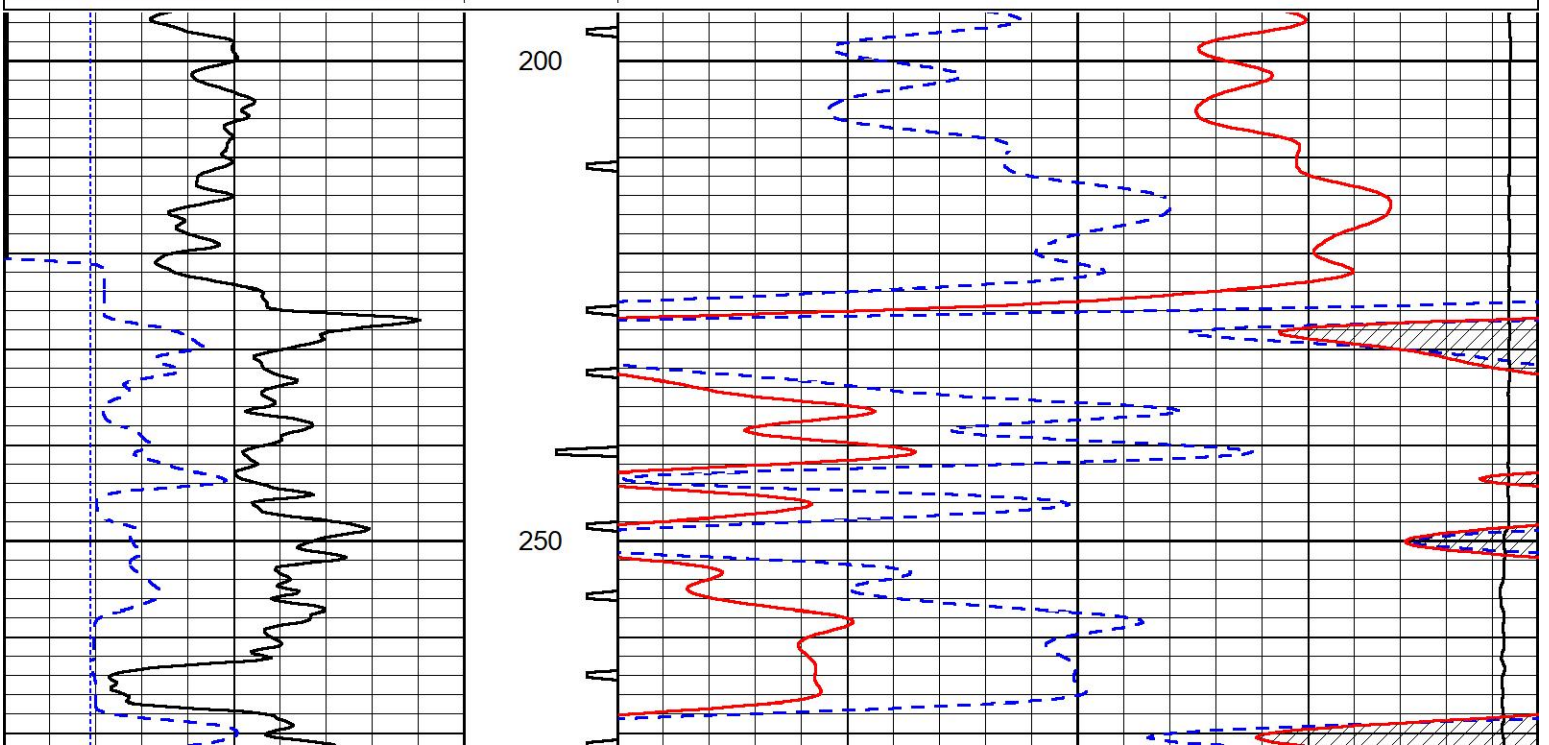


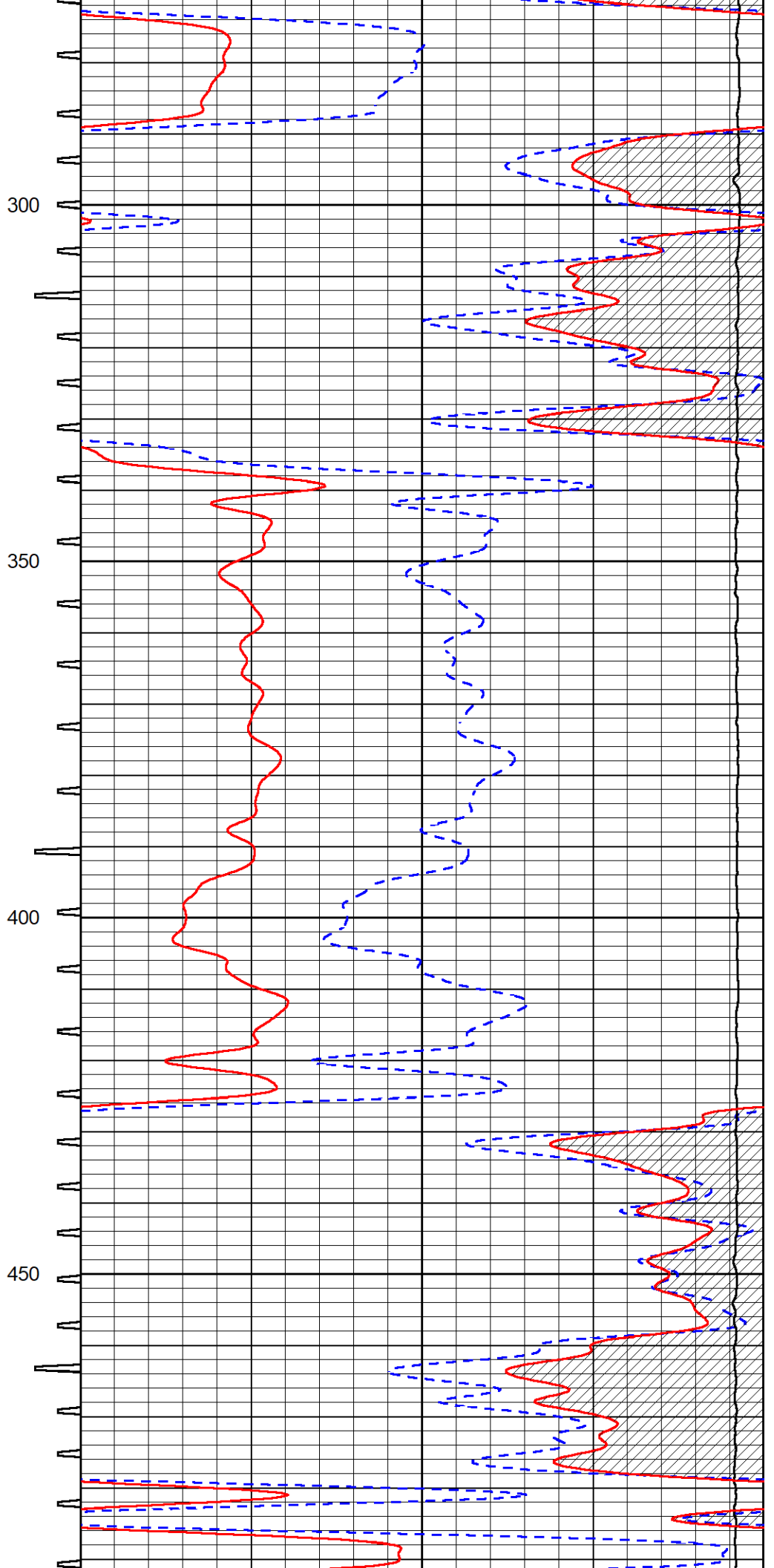
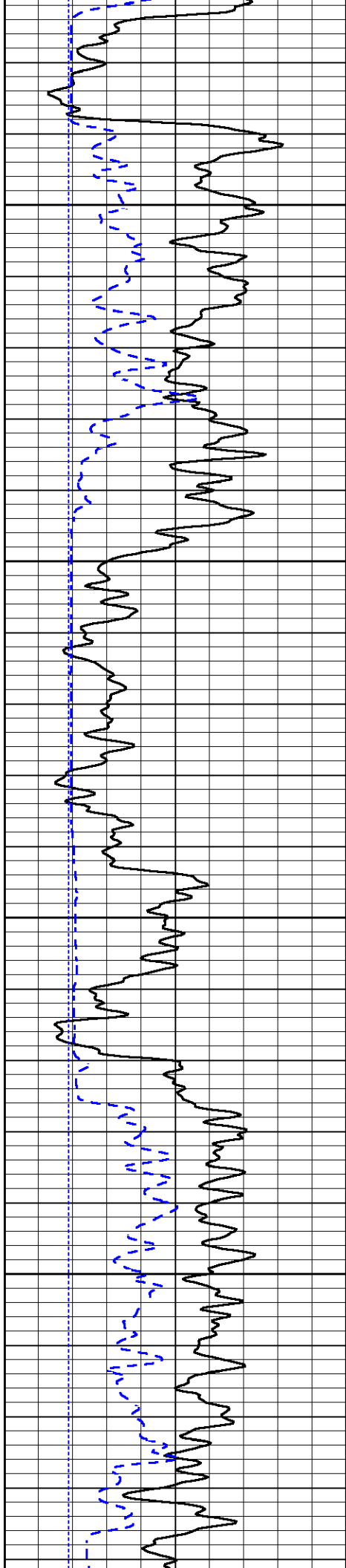
DETAIL SECTION

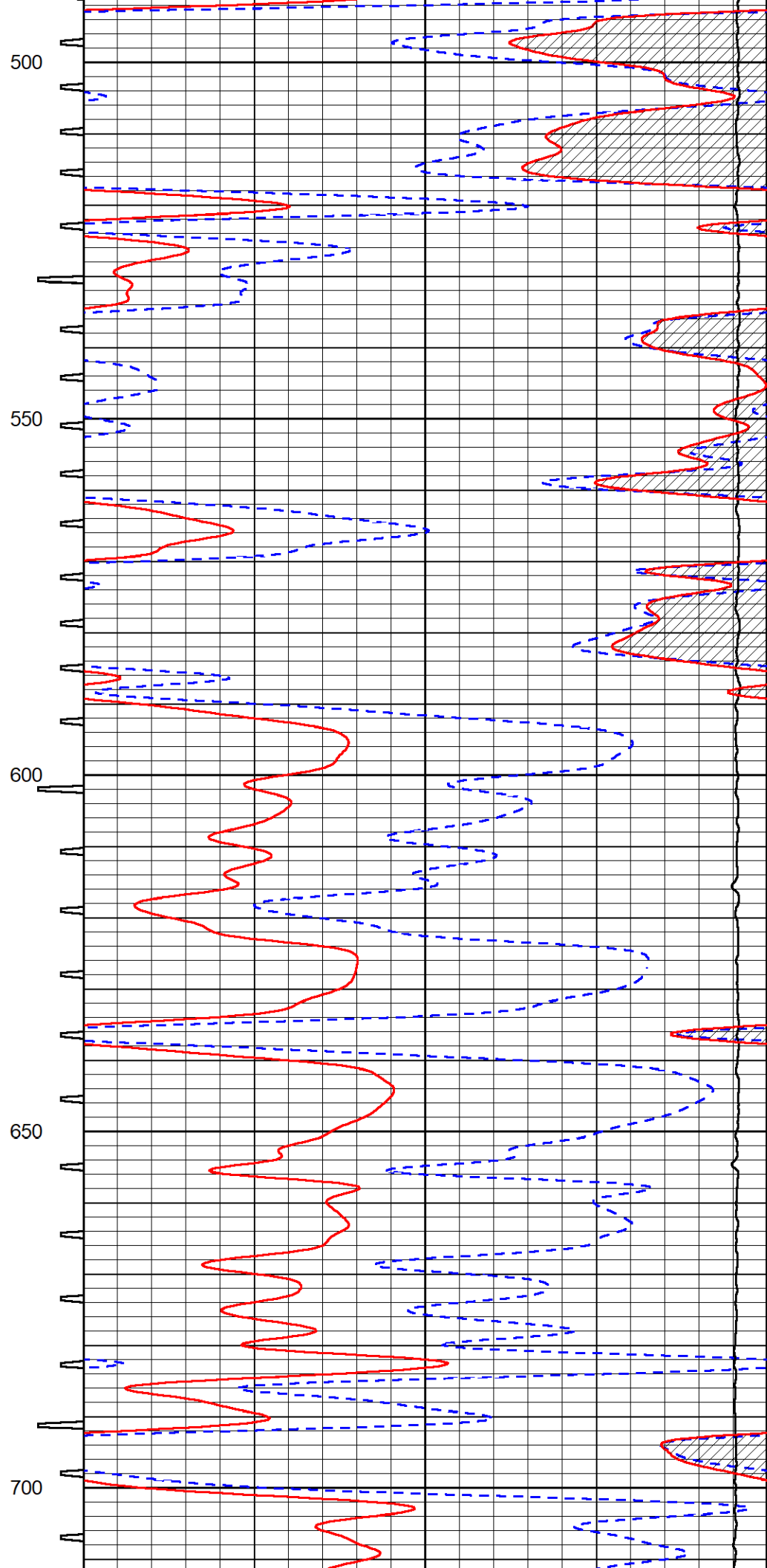
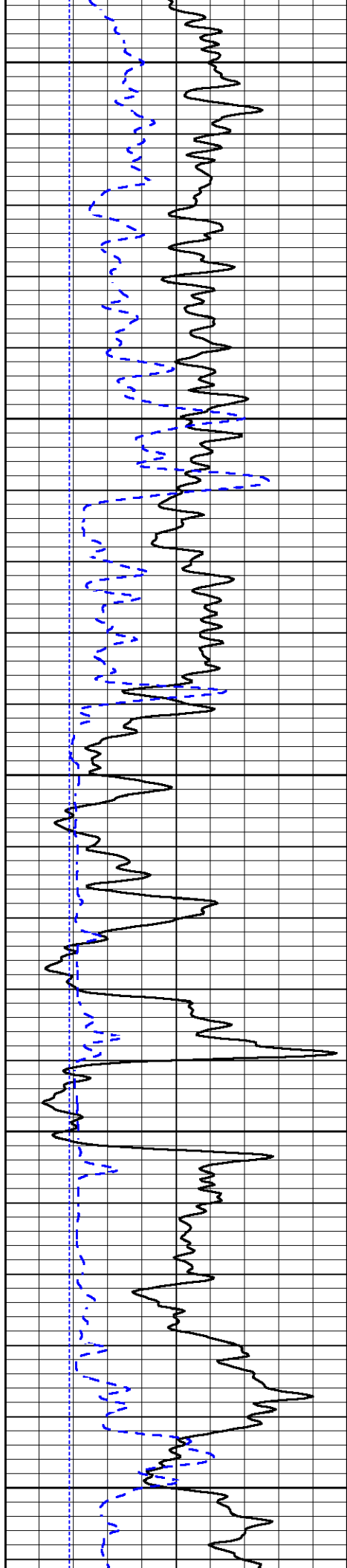
MAIN PASS

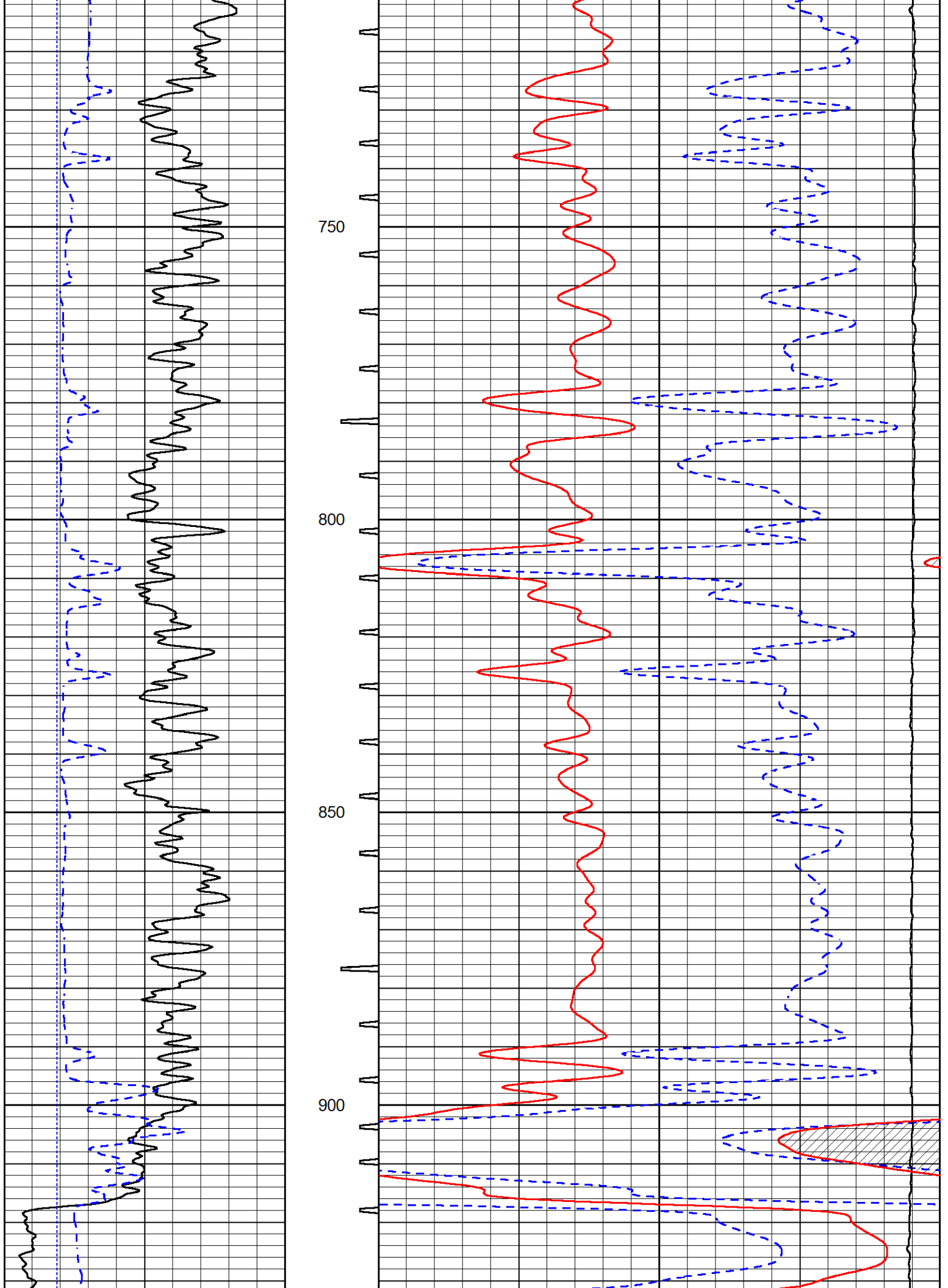
Database File american_warrior_shriwise #1-35.db
 Dataset Pathname STKML/pass3.1
 Presentation Format _sonic
 Dataset Creation Fri Jul 07 09:04:45 2023
 Charted by Depth in Feet scaled 1:240

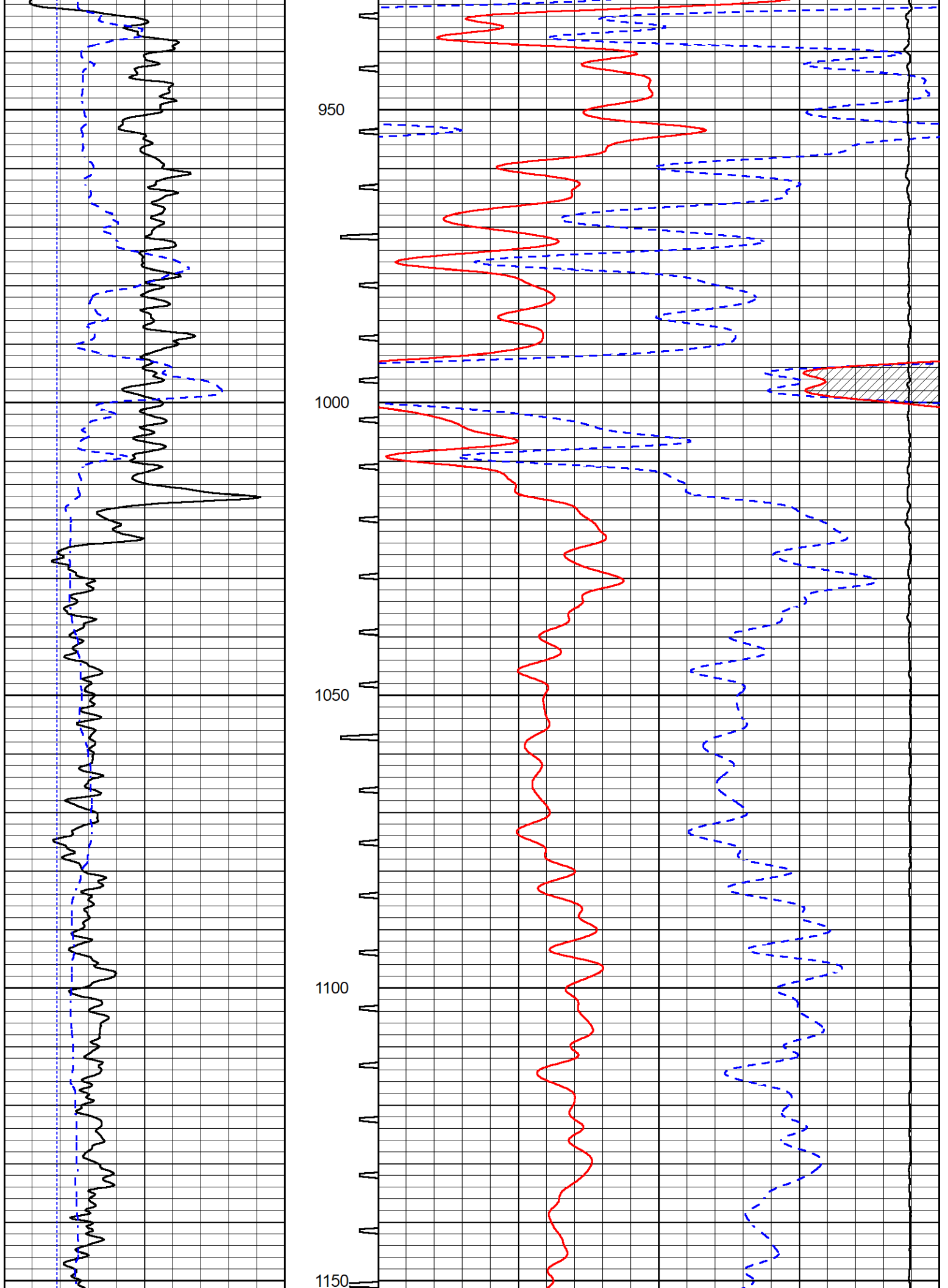
| | | | | | | |
|-----|------------------|-----|------------|-------|--------------------------------|-----|
| 0 | Gamma Ray (GAPI) | 150 | Sonic Int | 140 | Delta Time (usec/ft) (usec/ft) | 40 |
| 150 | GR (GAPI) | 300 | 5 (msec) 0 | 30 | Sonic Porosity (pu) (pu) | -10 |
| 6 | Caliper (in) | 16 | | 15000 | Line Tension (lb) | 0 |

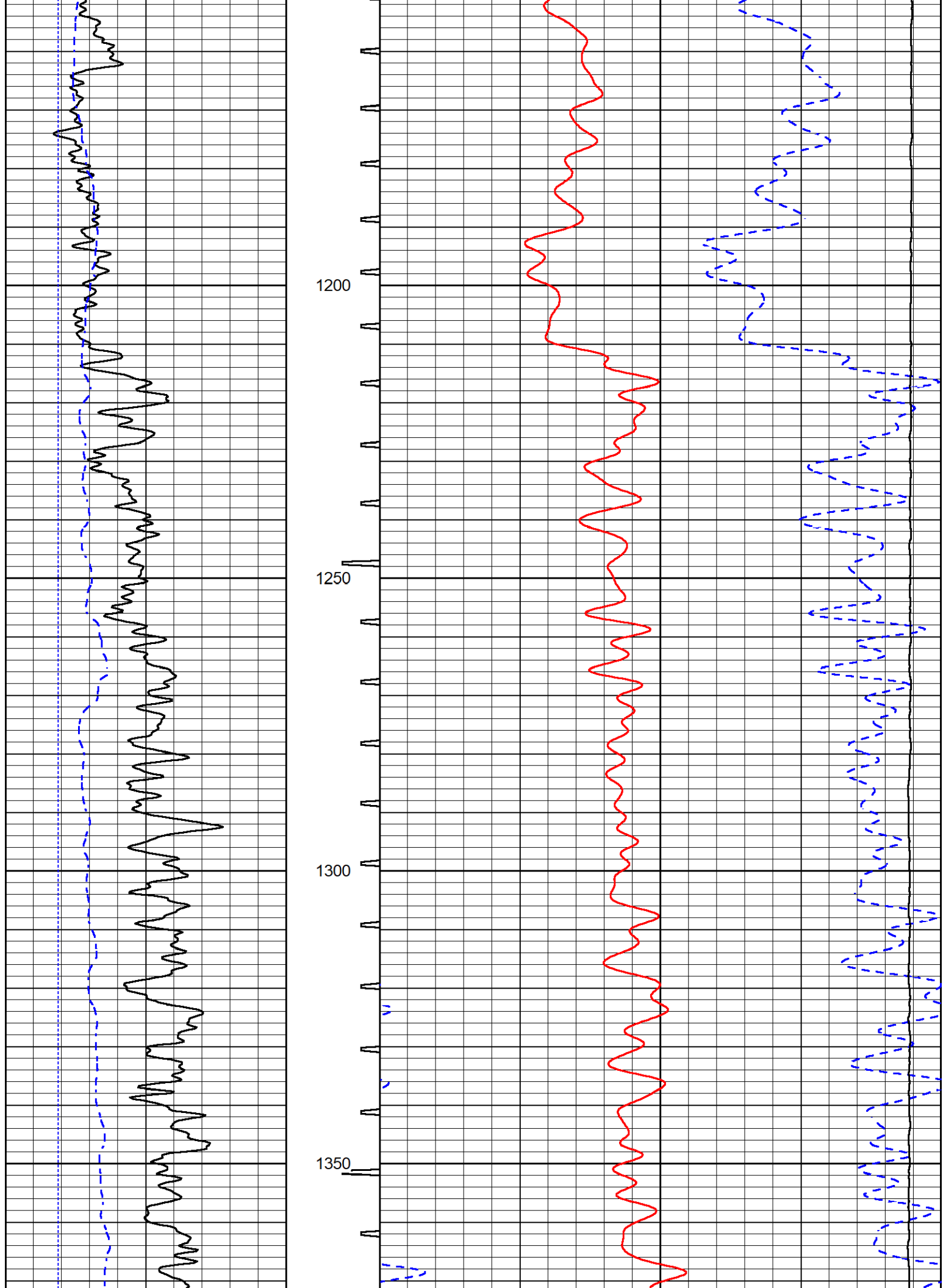


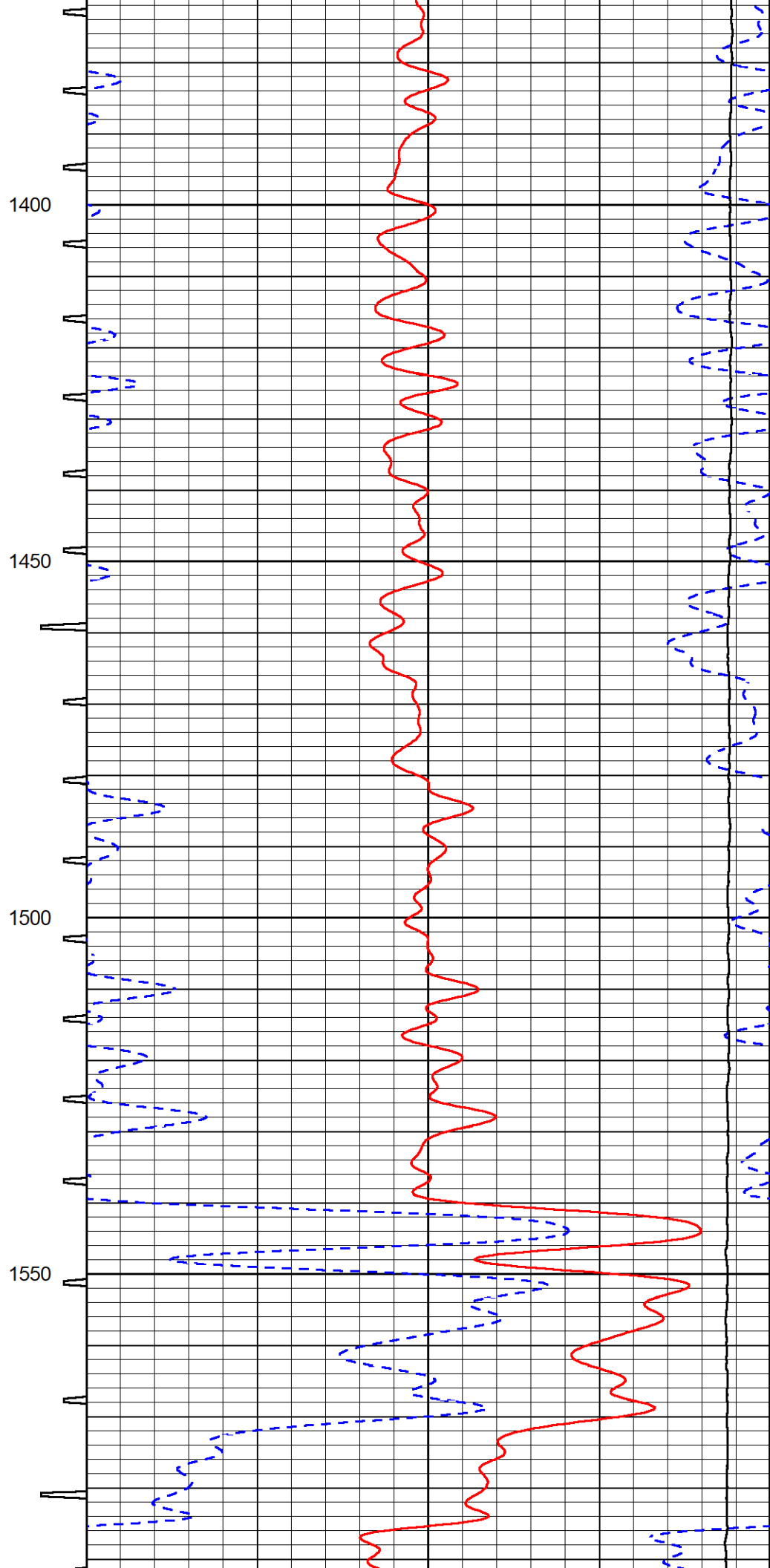
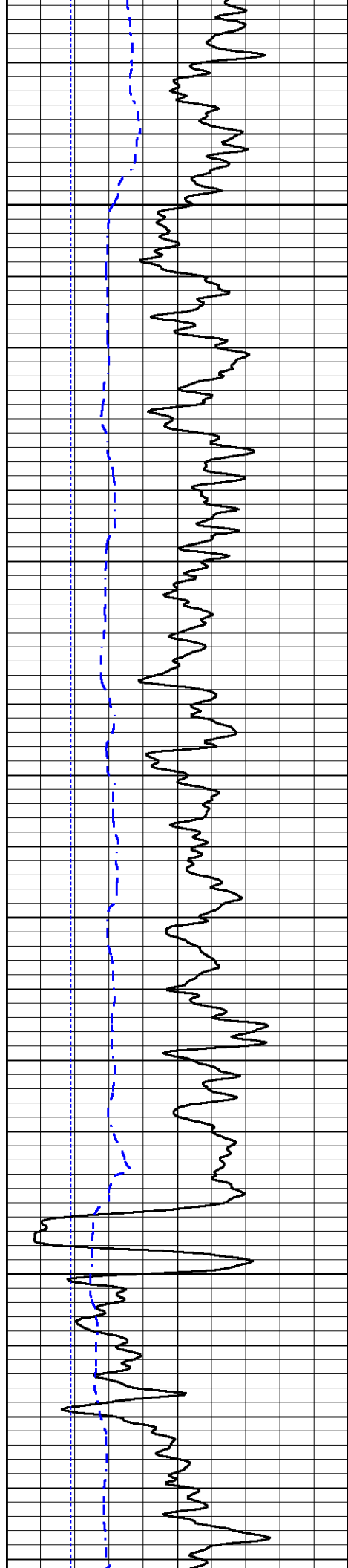


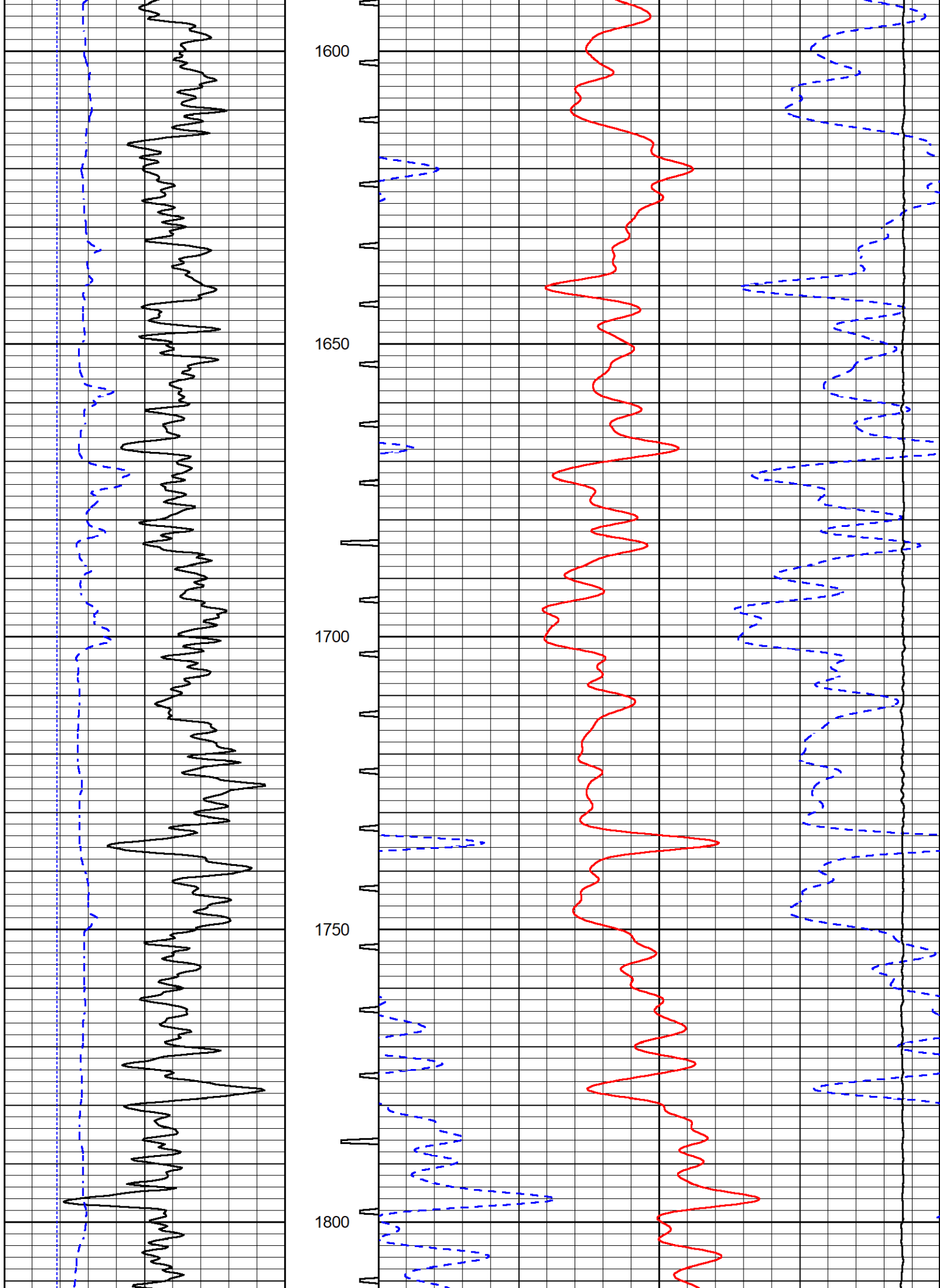


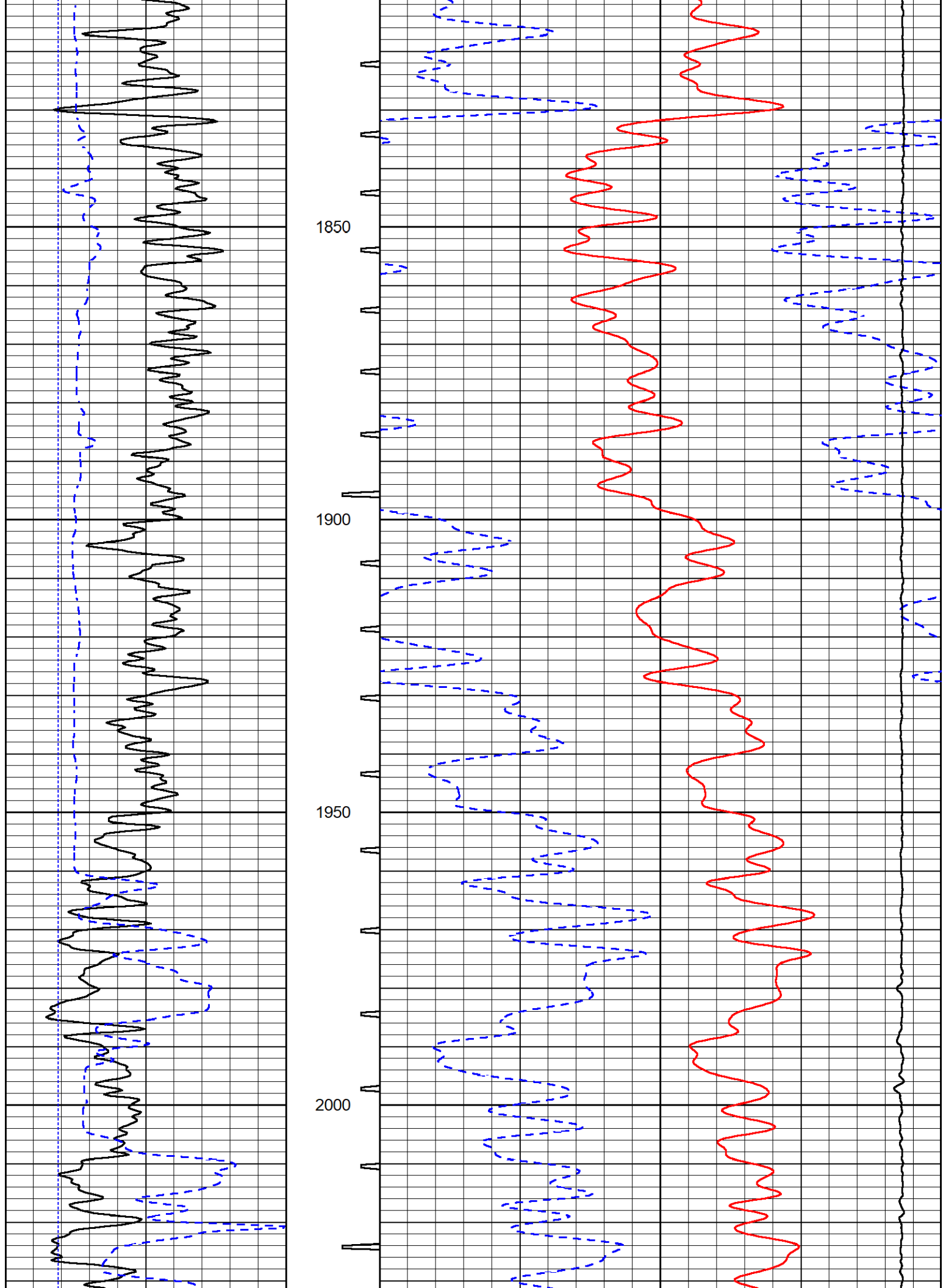


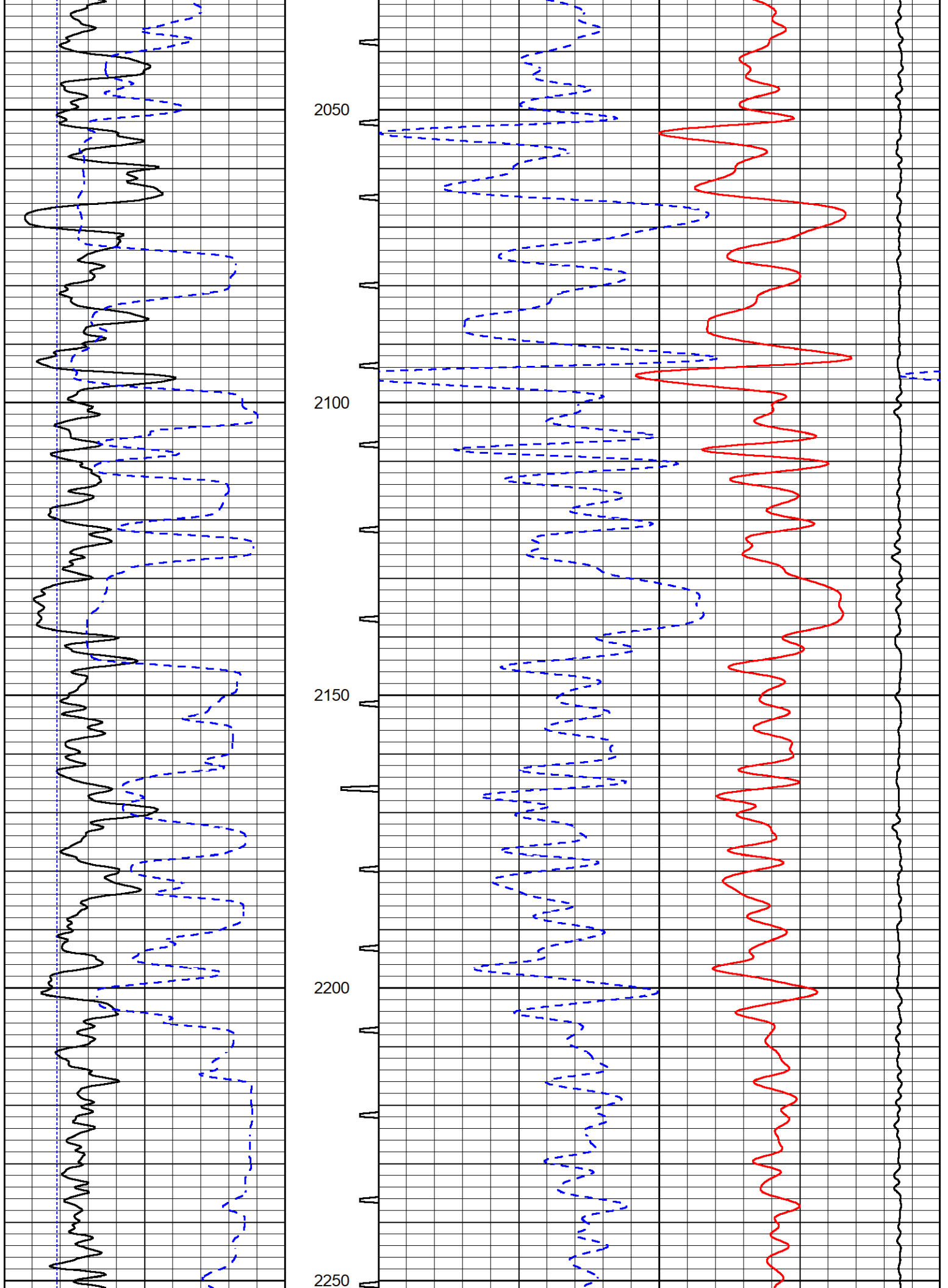


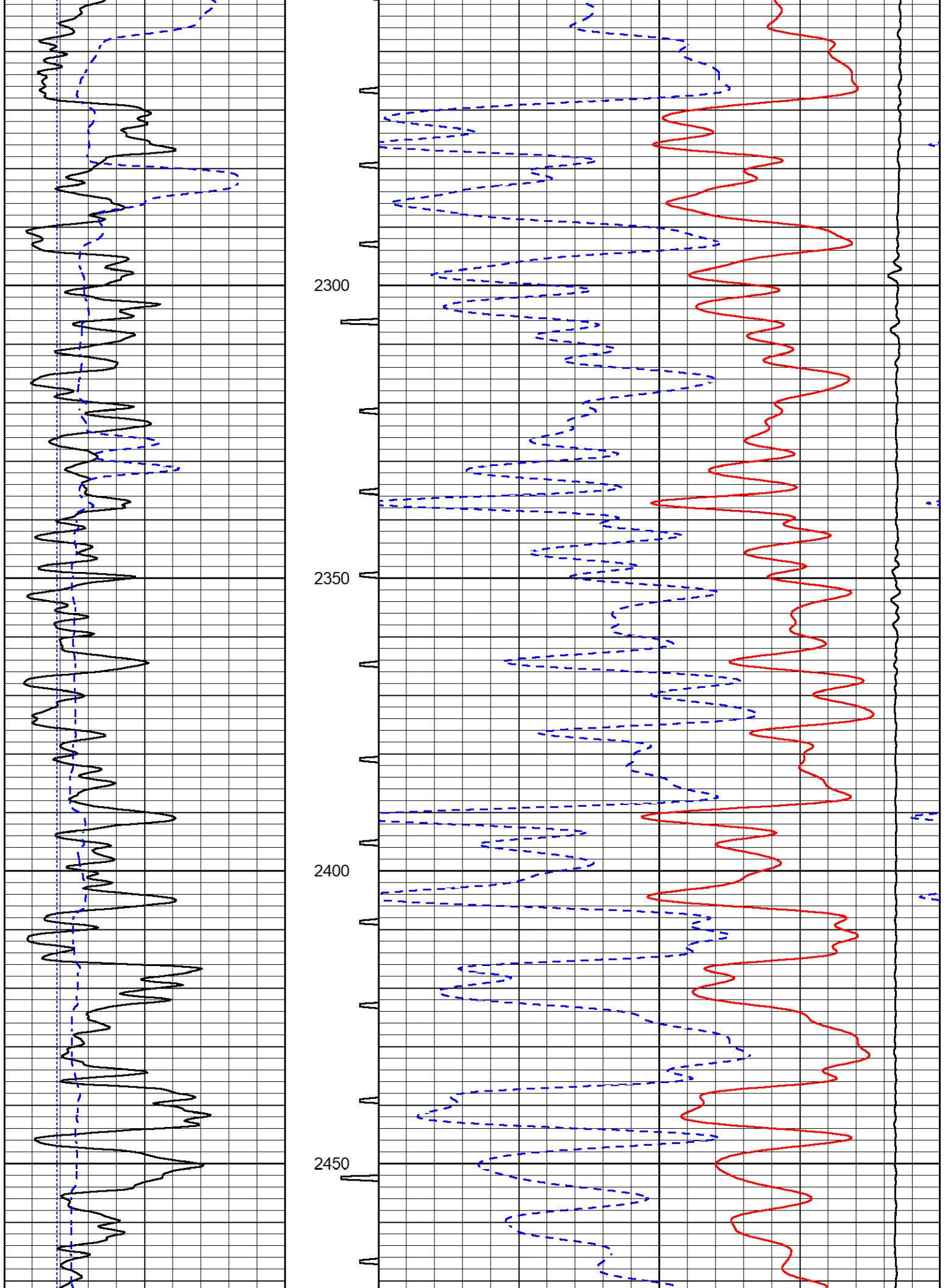


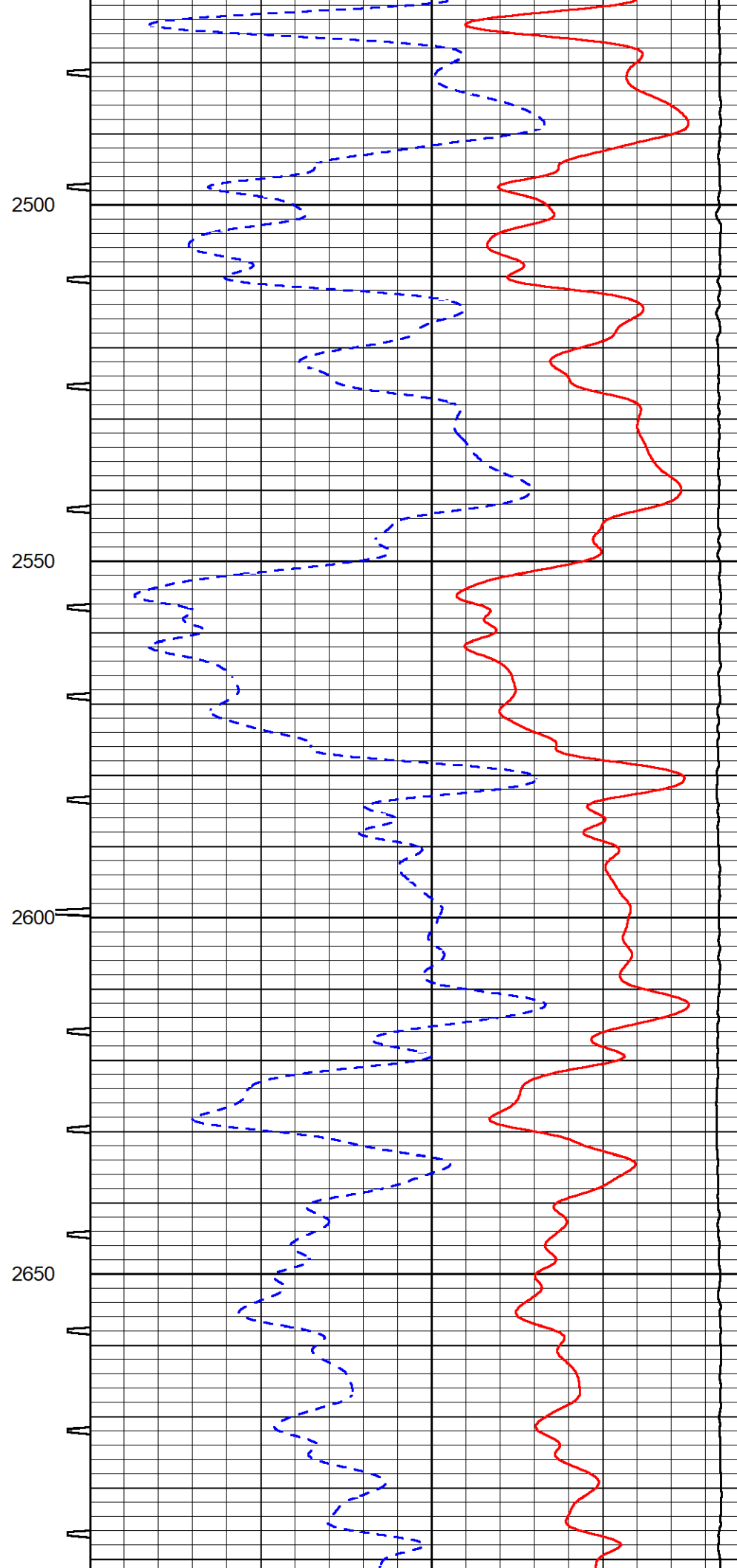
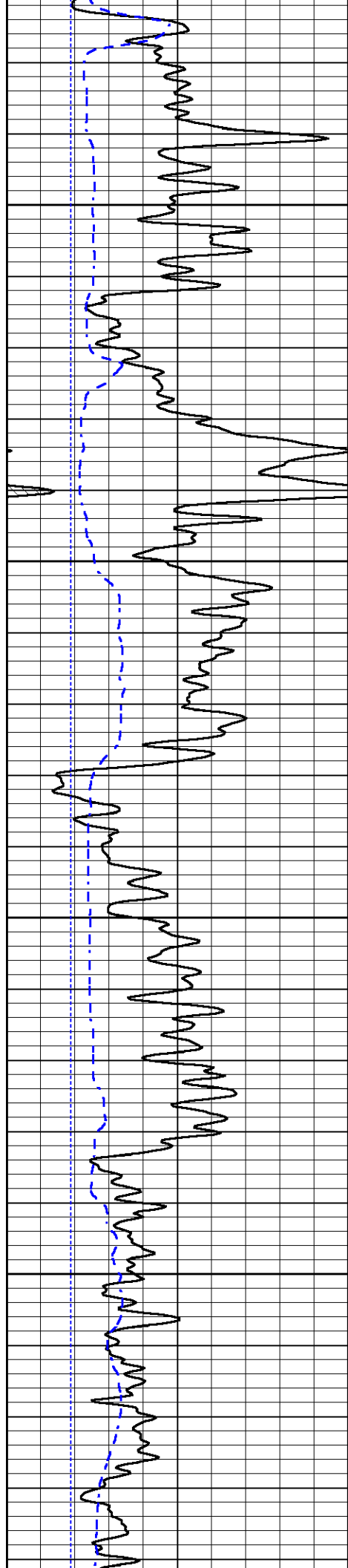


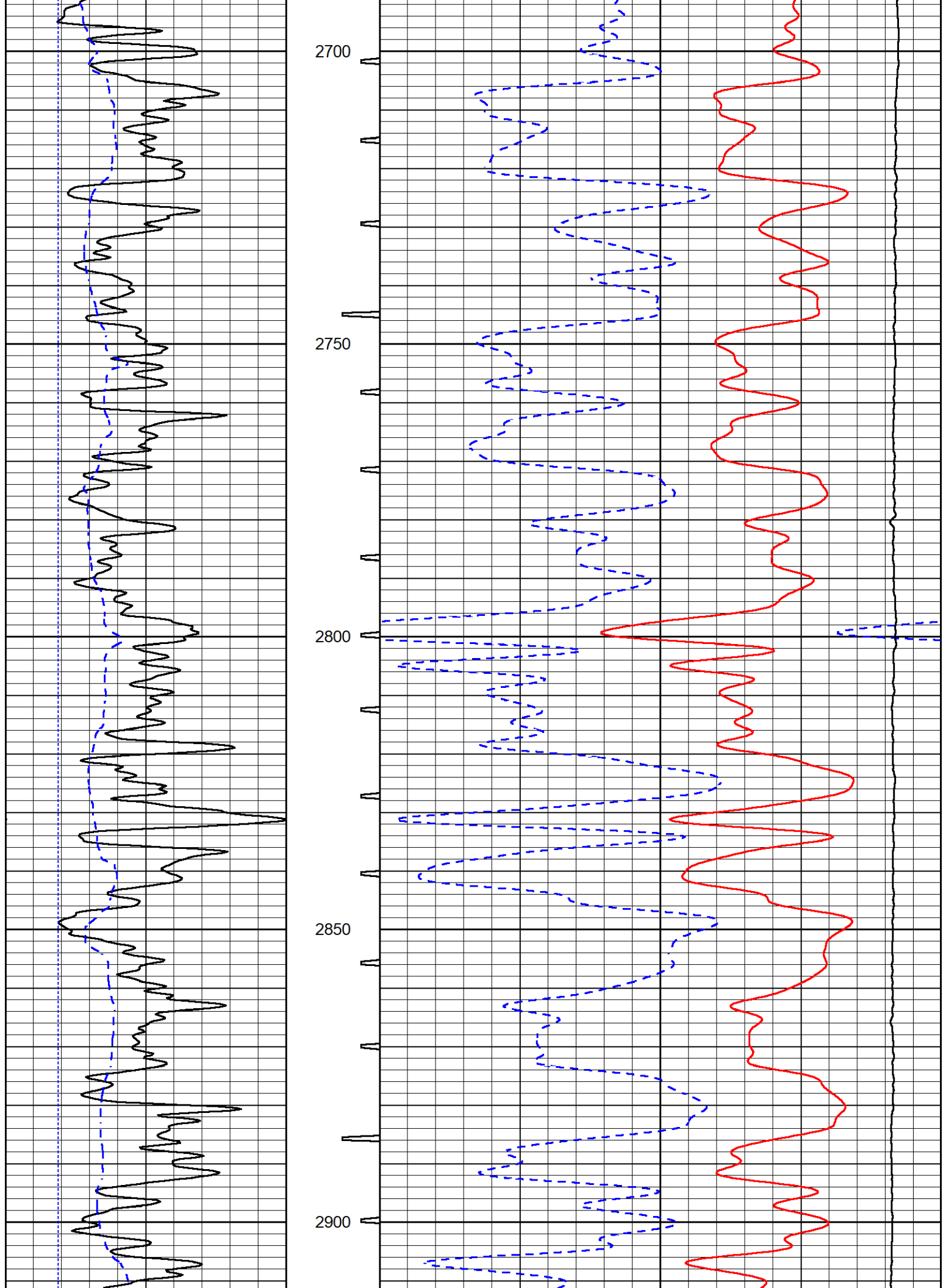


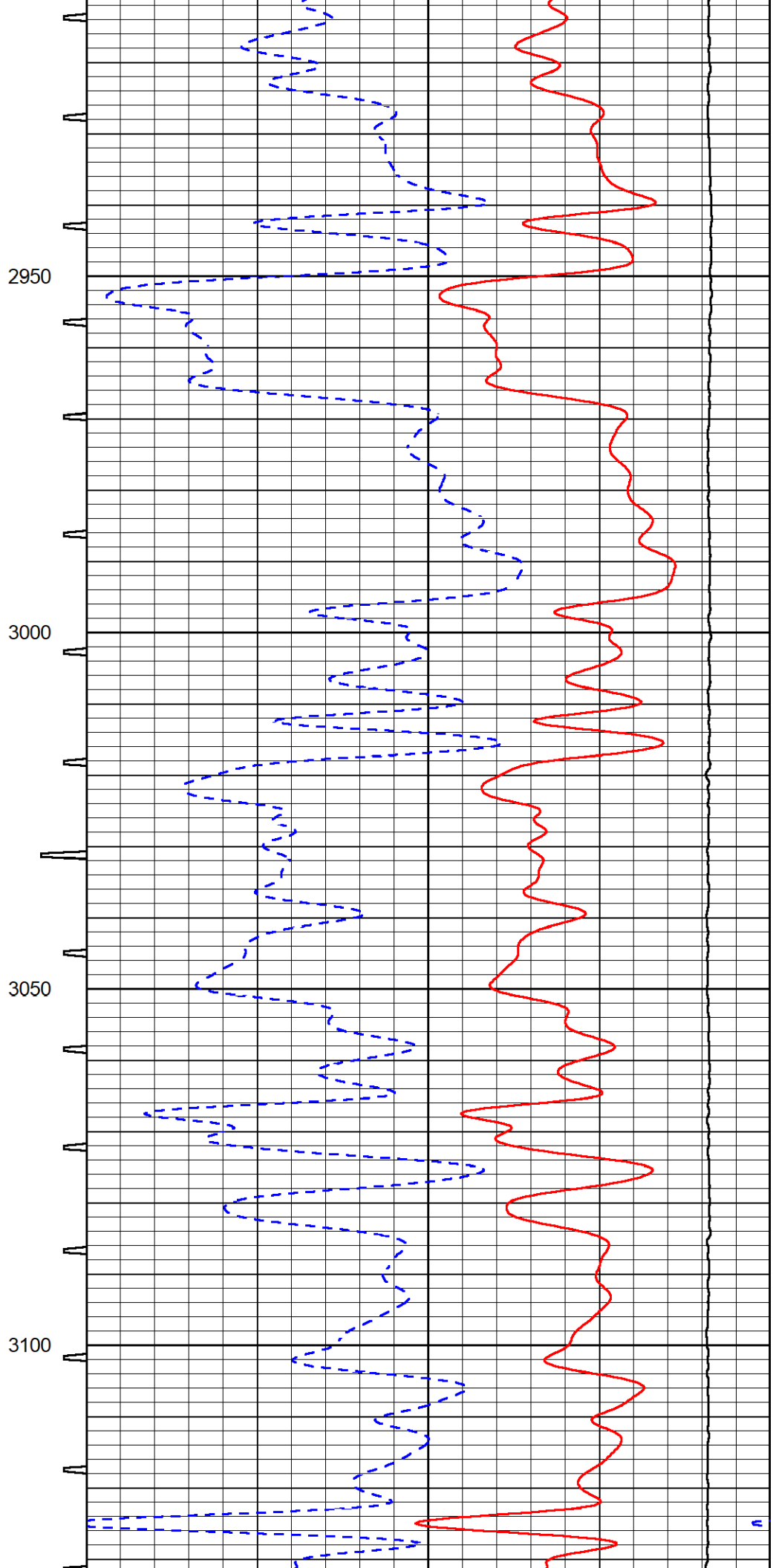
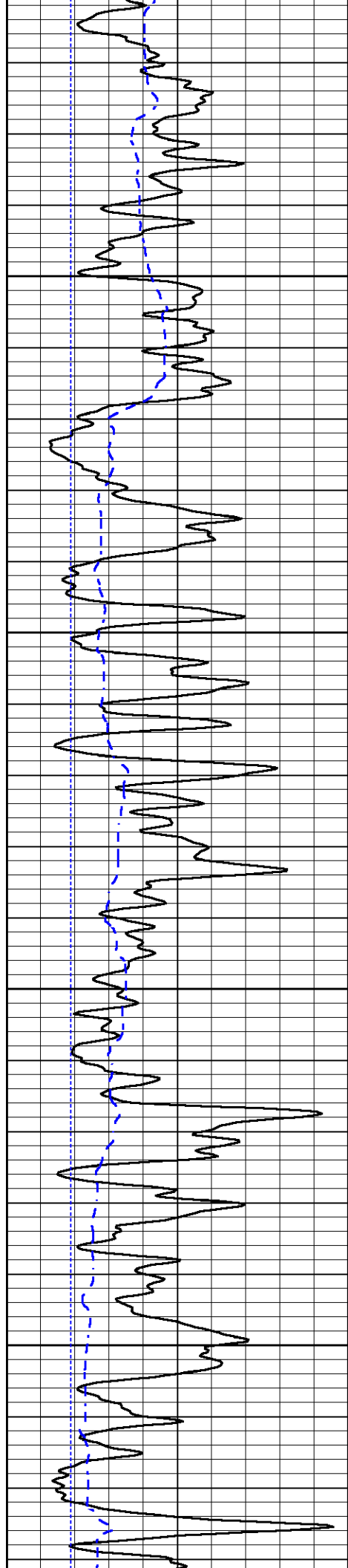


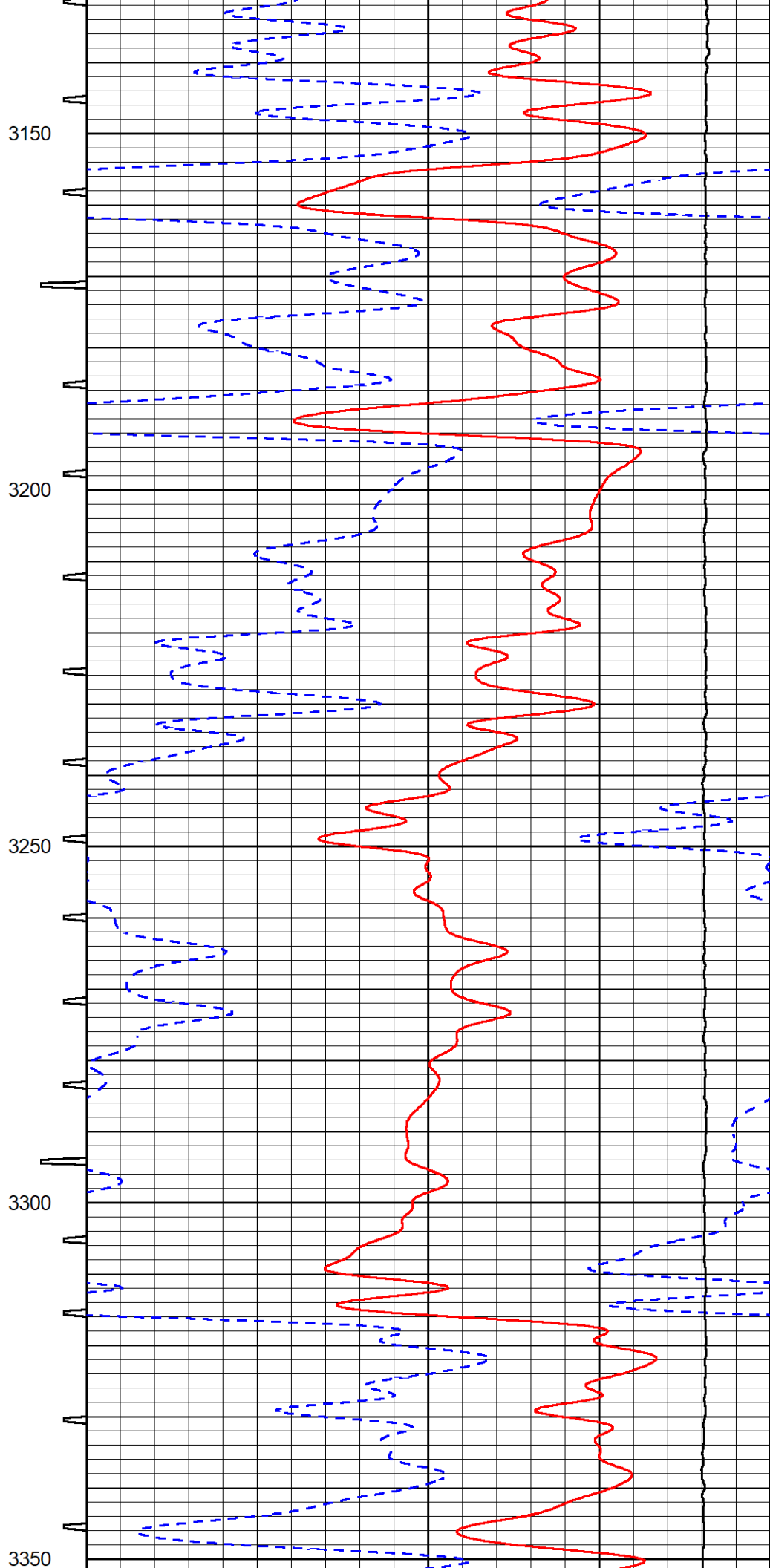
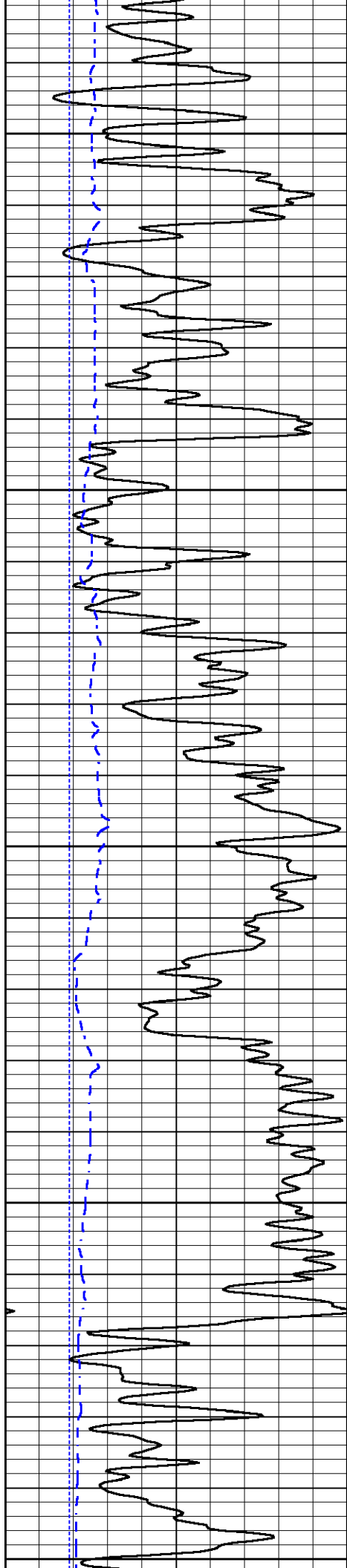


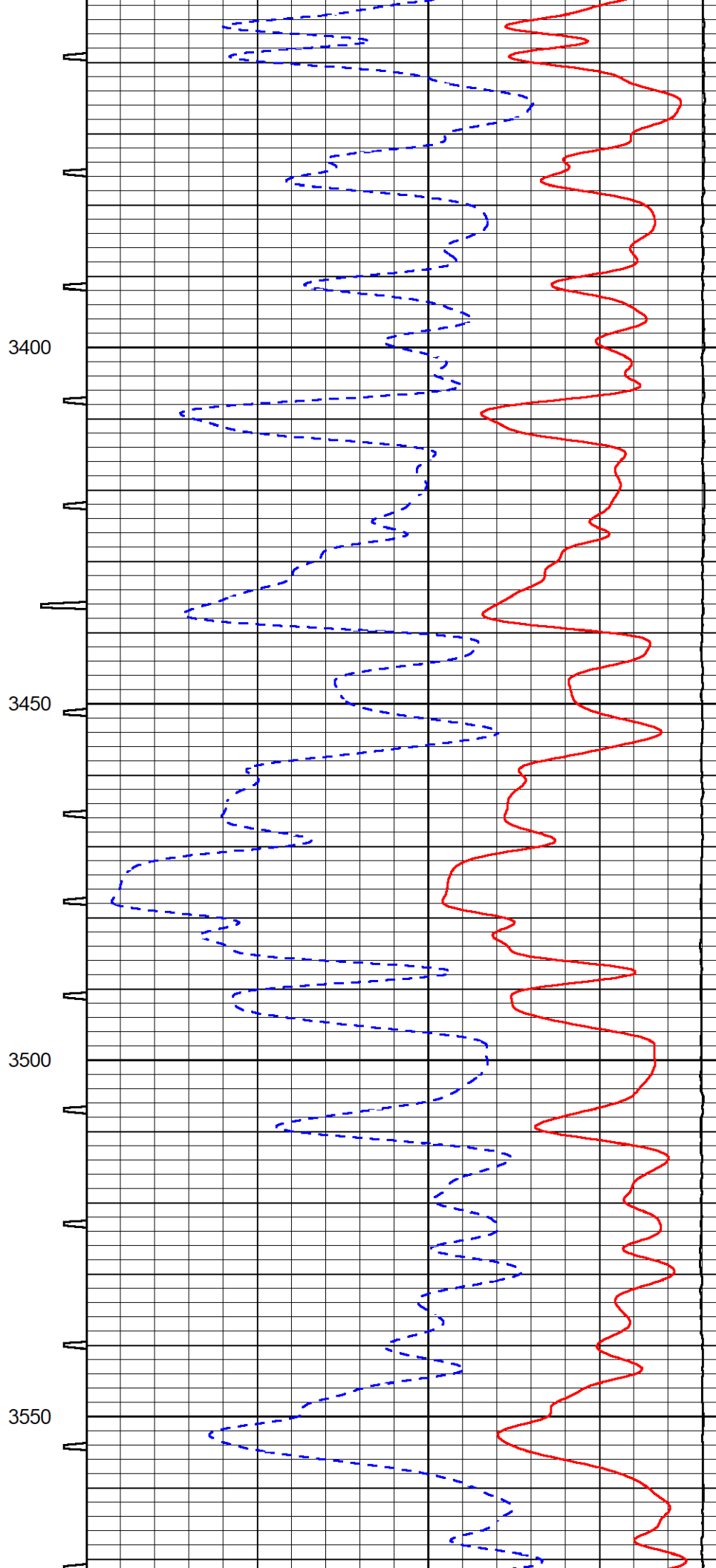
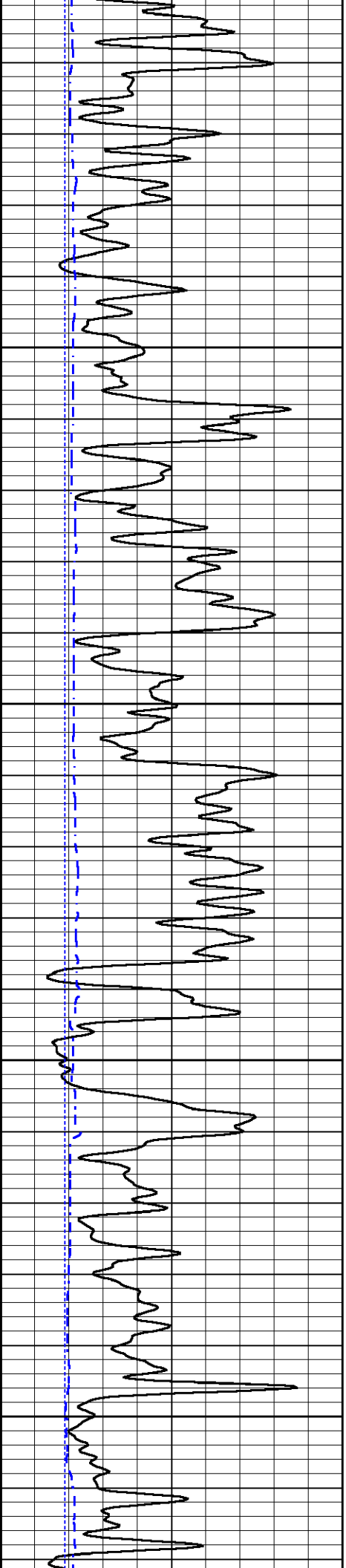


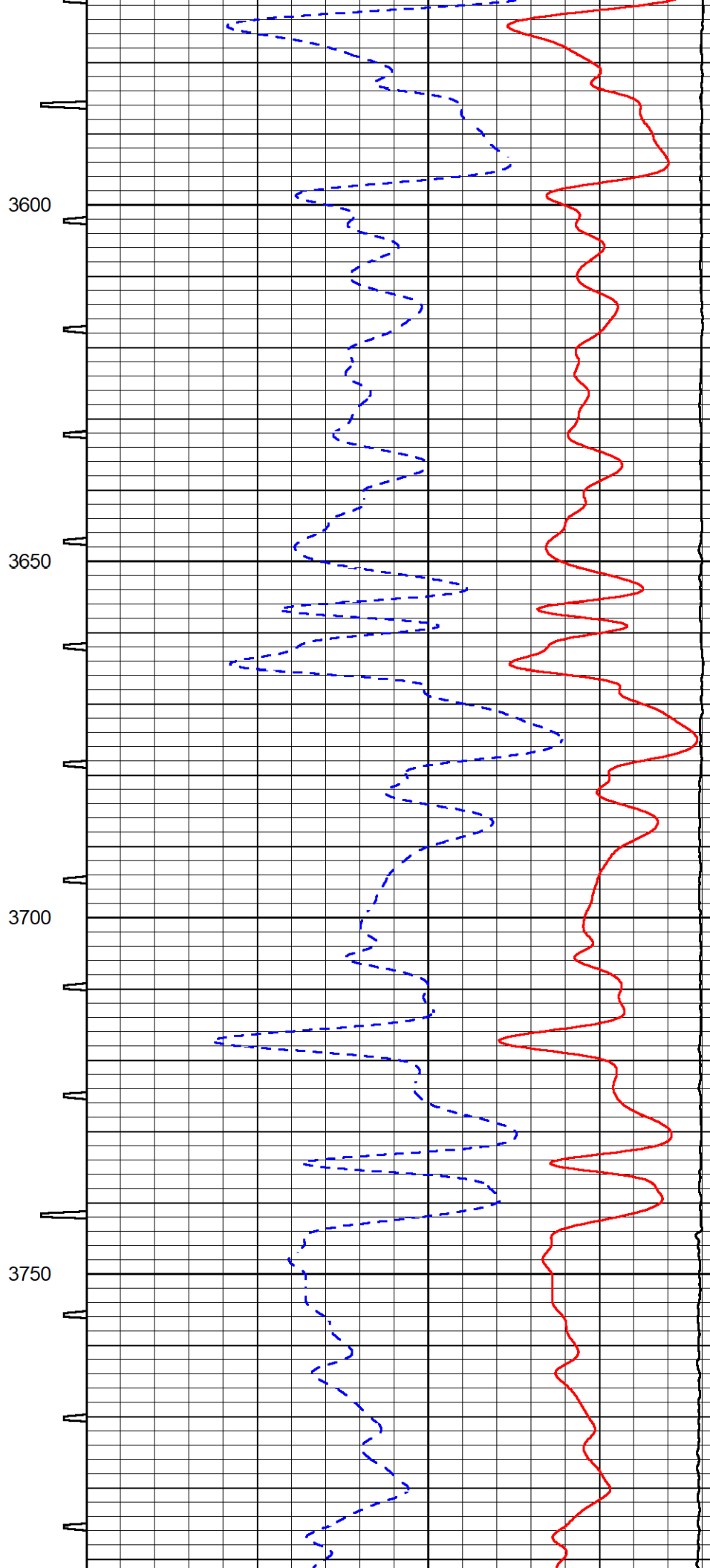
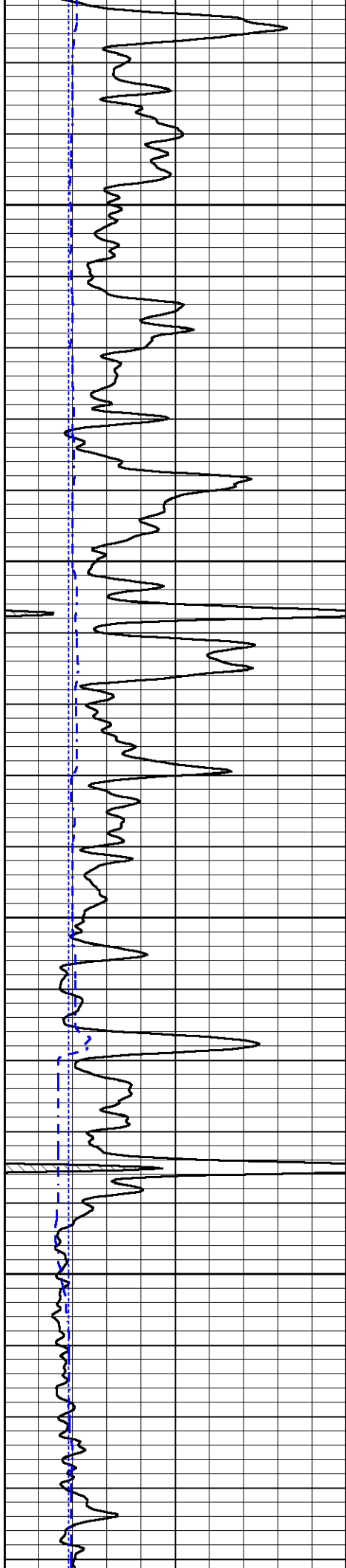


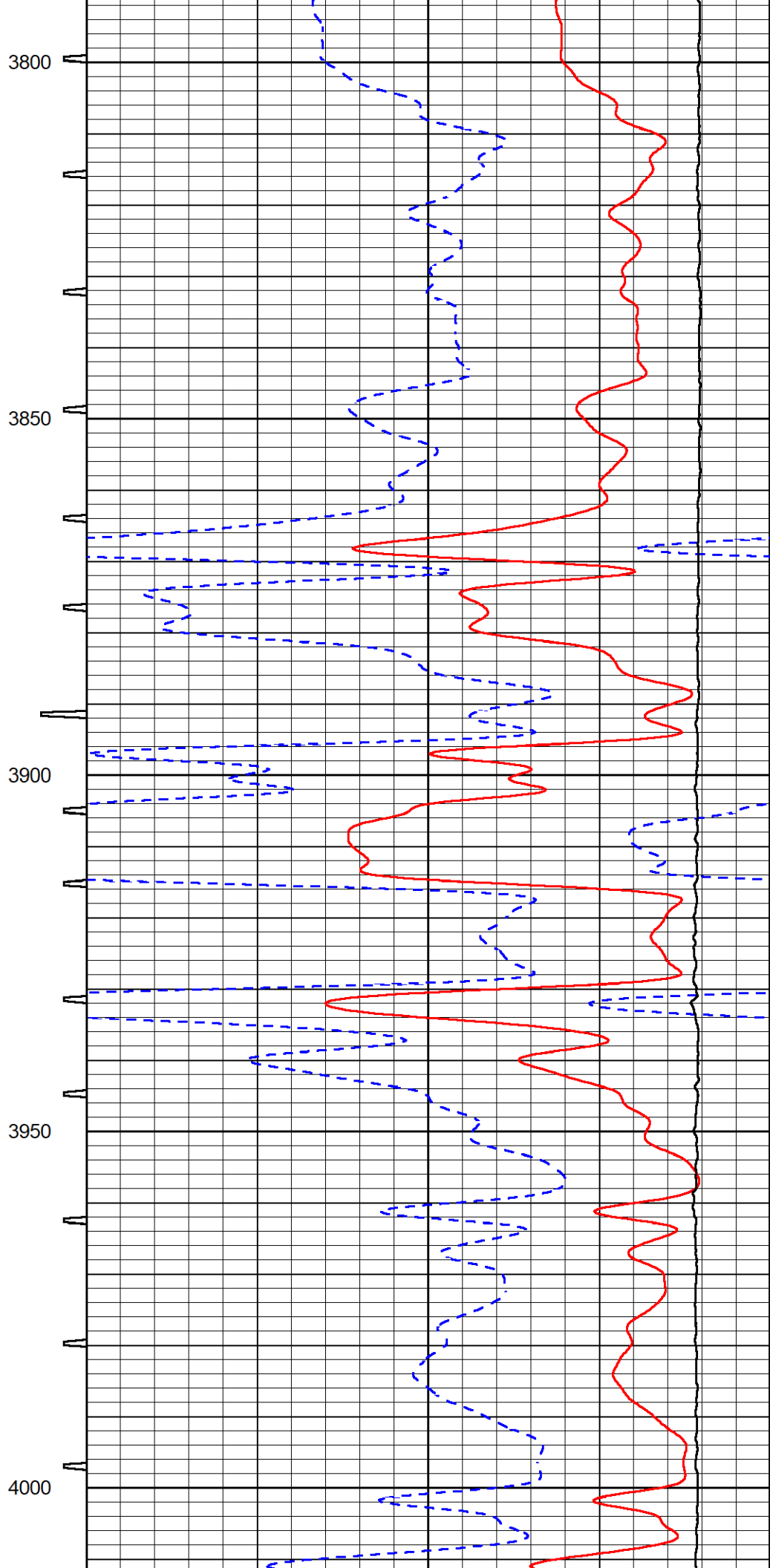
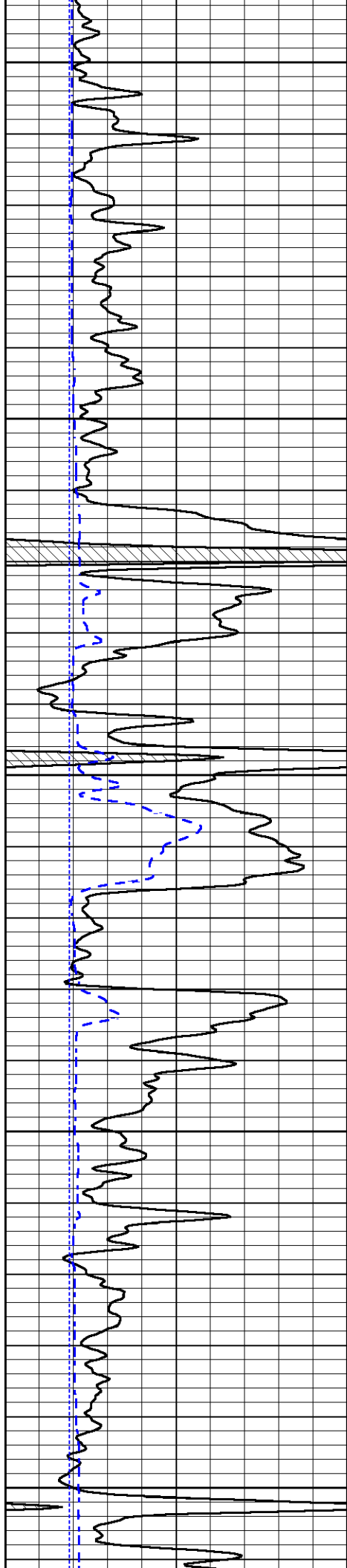


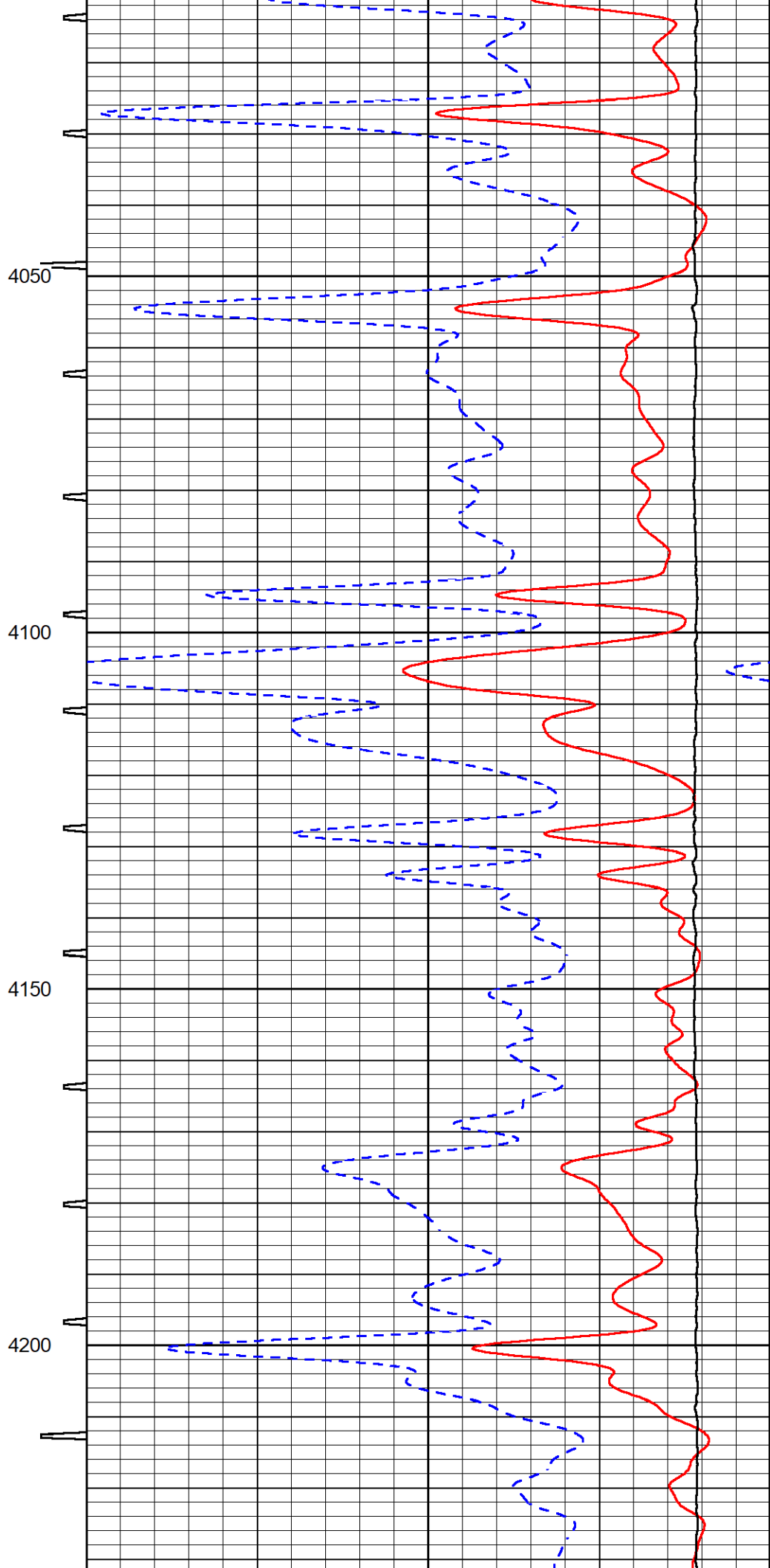
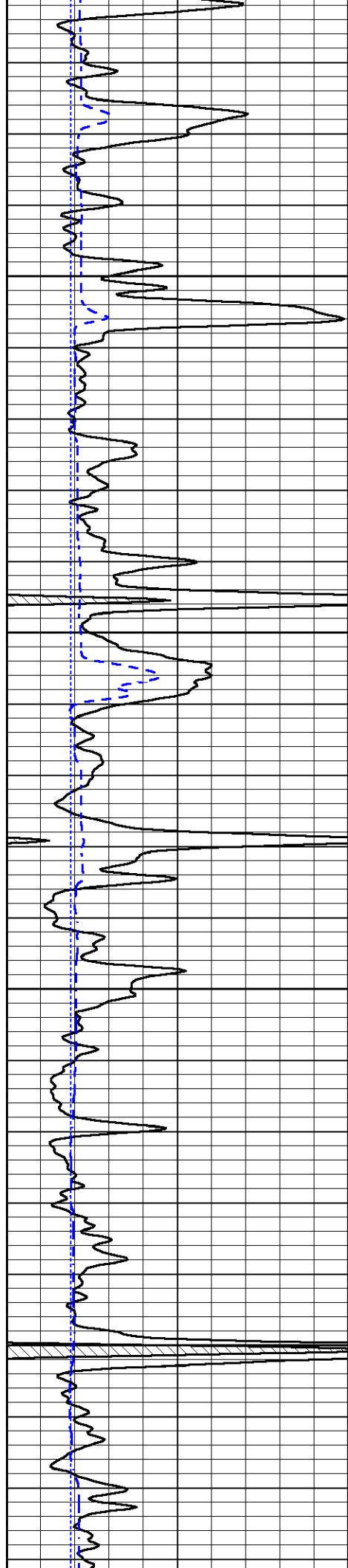


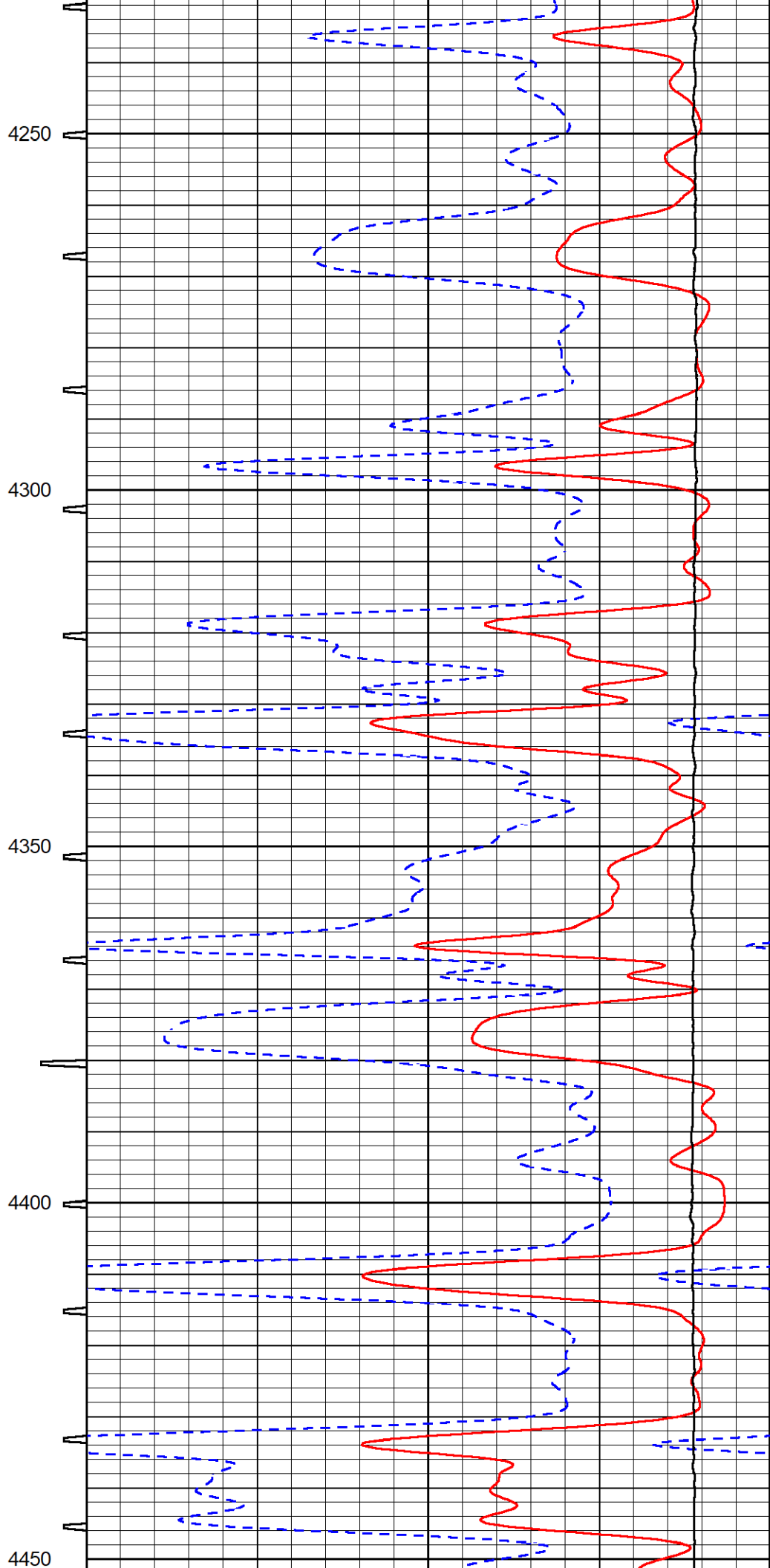
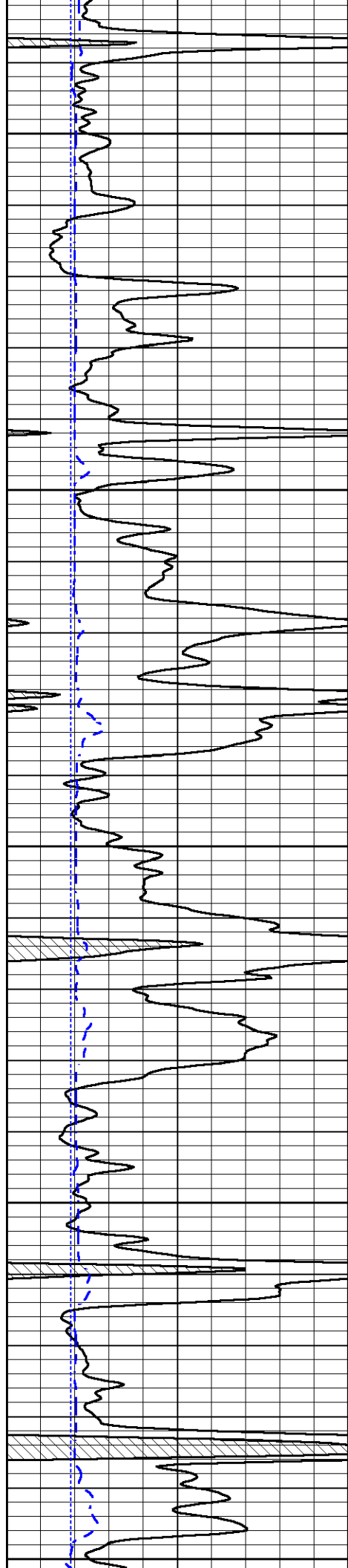


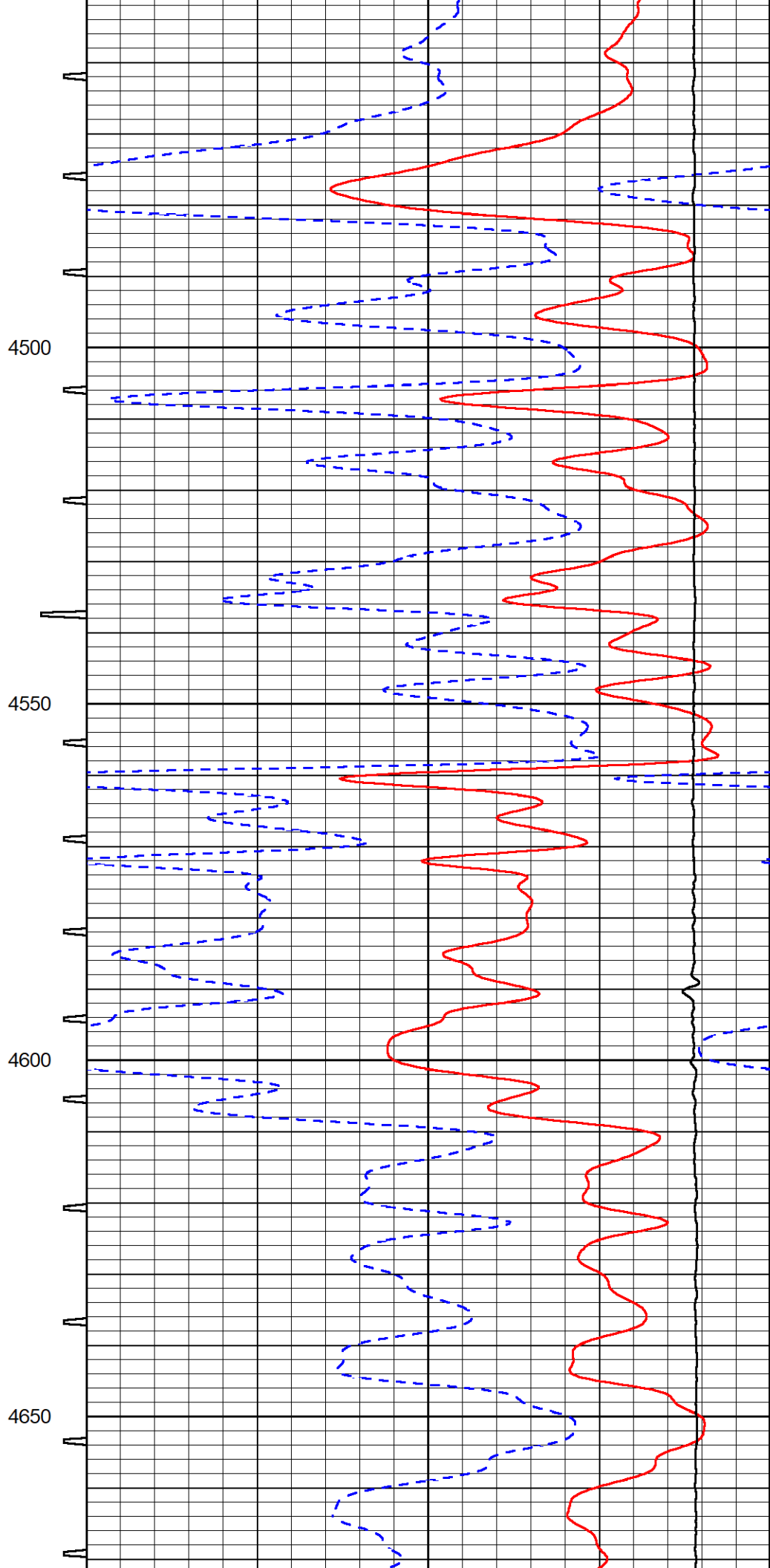
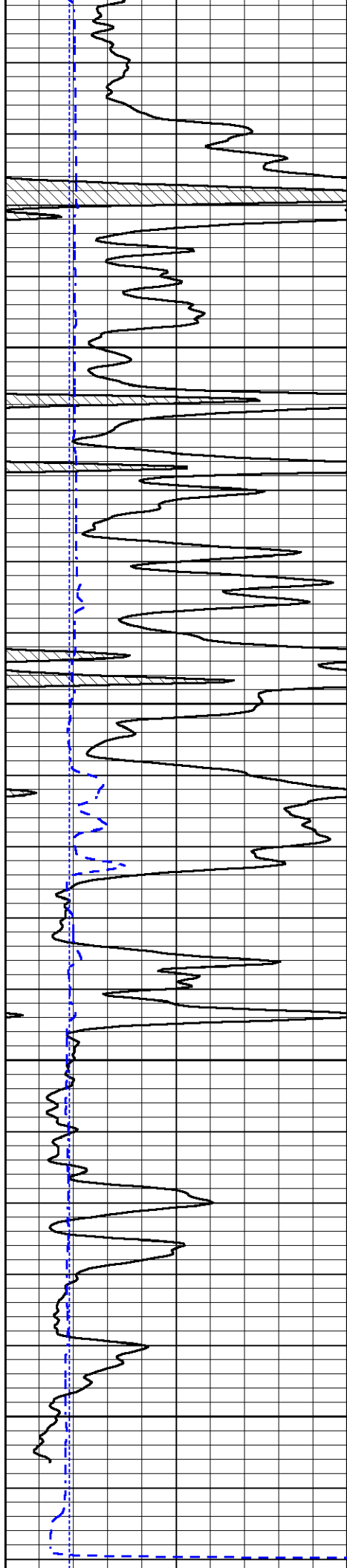


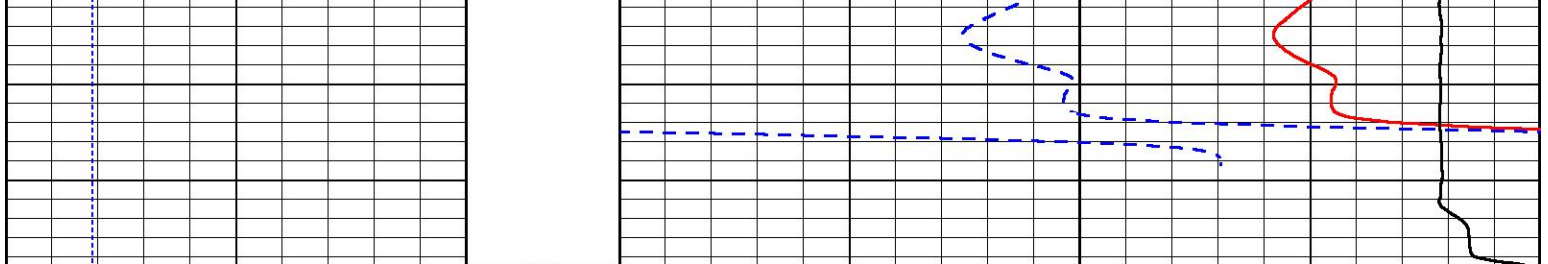












| | | | | | | |
|-----|------------------|-----|------------|-------|--------------------------------|-----|
| 0 | Gamma Ray (GAPI) | 150 | Sonic Int | 140 | Delta Time (usec/ft) (usec/ft) | 40 |
| 150 | GR (GAPI) | 300 | 5 (msec) 0 | 30 | Sonic Porosity (pu) (pu) | -10 |
| 6 | Caliper (in) | 16 | | 15000 | Line Tension (lb) | 0 |

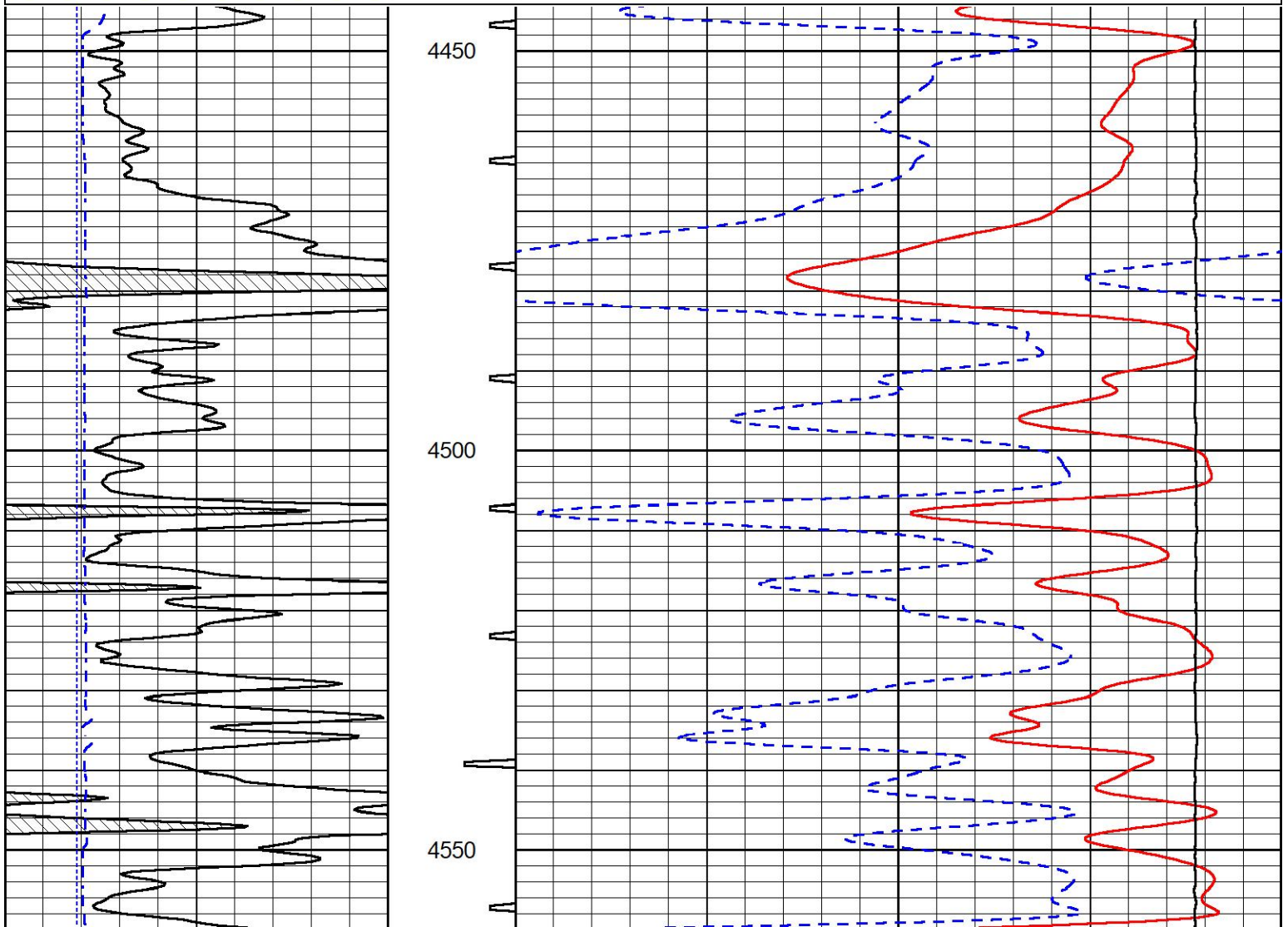


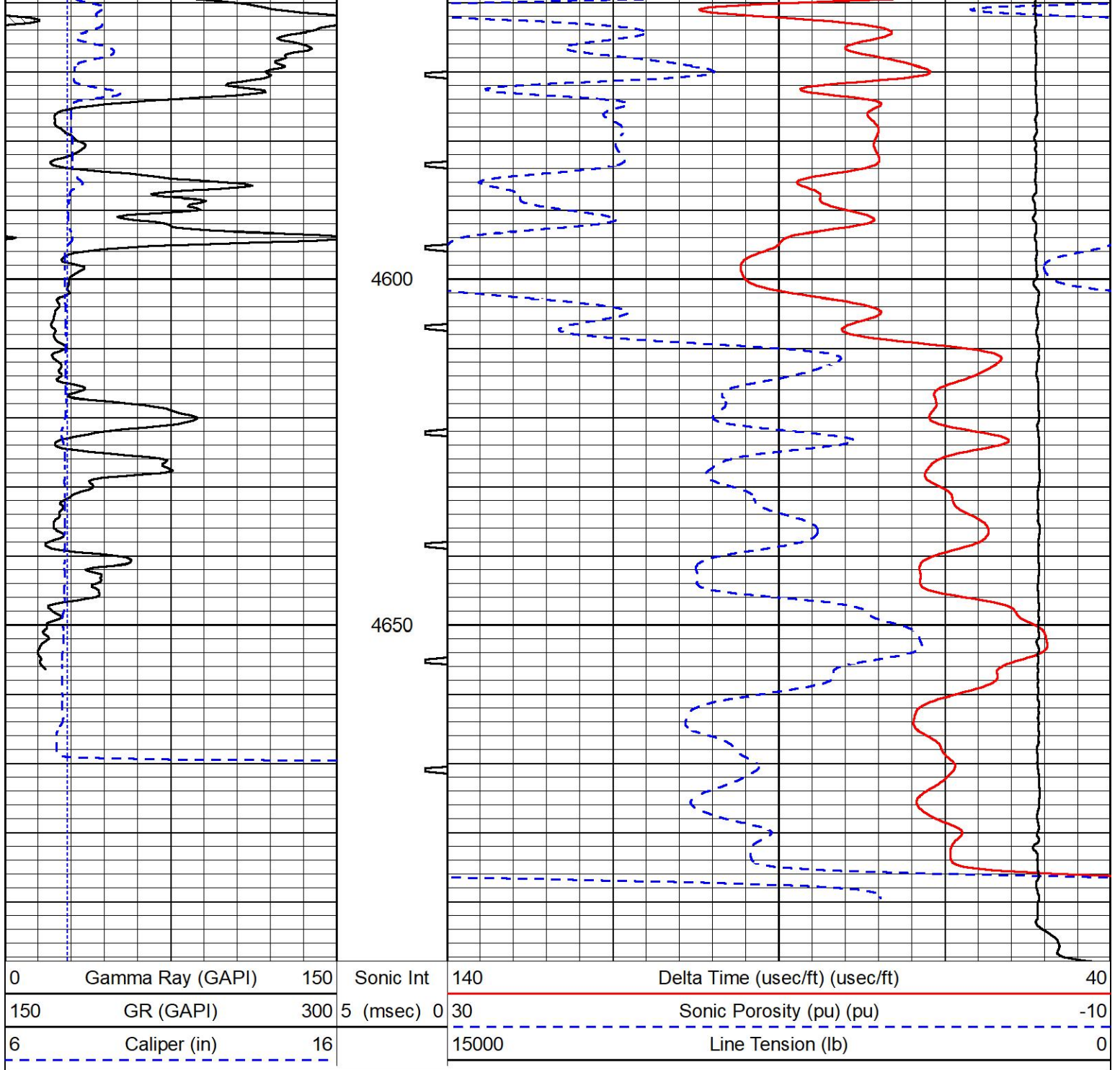
REPEAT SECTION

REPEAT PASS

Database File american_warrior_shriwise #1-35.db
 Dataset Pathname STKML/pass2.1
 Presentation Format _sonic
 Dataset Creation Fri Jul 07 08:21:41 2023
 Charted by Depth in Feet scaled 1:240

| | | | | | | |
|-----|------------------|-----|------------|-------|--------------------------------|-----|
| 0 | Gamma Ray (GAPI) | 150 | Sonic Int | 140 | Delta Time (usec/ft) (usec/ft) | 40 |
| 150 | GR (GAPI) | 300 | 5 (msec) 0 | 30 | Sonic Porosity (pu) (pu) | -10 |
| 6 | Caliper (in) | 16 | | 15000 | Line Tension (lb) | 0 |





MIDWEST WIRELINE

Company American Warrior , Inc
 Well Shriwise #1-35
 Field Jetmore
 County Hodgeman
 State Kansas