



MIDWEST WIRELINE

BOREHOLE COMPENSATED SONIC

Company Satchell Creek Petroleum LLC
Well Worcester A #4-22
Field Alda South
County Graham **State** Kansas

Company Satchell Creek Petroleum LLC
Well Worcester A #4-22
Field Alda South
County Graham
State Kansas

Location: API #: 15-065-24257-00-00
 NE SW/NW/SW
 1734 FSL & 567 FWL
 SEC 22 TWP 7S RGE 22W
Permanent Datum Ground Level Elevation 2264
Log Measured From Kelly Bushing
Drilling Measured From Kelly Bushing
Other Services CNL/CDL
 MEL/DIL
Elevation 2271
G.L. 2264

Date	7/15/2023	
Run Number	Two	
Type Log	BHCS	
Depth Driller	3913	
Depth Logger	3907	
Bottom Logged Interval	3995	
Top Logged Interval	200	
Type Fluid In Hole	Chemical	
Salinity, PPM CL	1000	
Density	9.4	
Level	Full	
Max. Rec. Temp. F	115	
Operating Rig Time	3.5 Hours	
Equipment -- Location	P-24 Hays	
Recorded By	T. Martin	
Witnessed By	Sean Deenihan	

Borehole Record				Casing Record			
Run No.	Bit	From	To	Size	Wgt.	From	To
One	12.25	00	220	8.625	23	00	220
Two	7.875	220	TD				

<<< Fold Here >>>

All interpretations are opinions based on inferences from electrical or other measurements and Midwest Wireline LLC cannot and does not guarantee the accuracy or correctness of any interpretation, and Midwest Wireline LLC will not be liable or responsible for any loss, costs, damages, or expenses incurred or sustained by anyone resulting from any interpretation made by any of our officers, agents or employees.

Comments

N/A DENOTES NOT AVAILABLE OR NON-APPLICABLE.

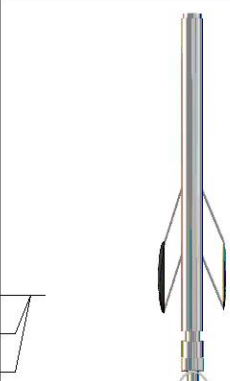
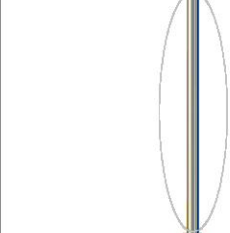
Hill City, KS, 3 E to Rd 310,
2.5 N to TB, E & N into

Log Measured From: Kelly Bushing 5 Ft. Above Permanent Datum

THANK YOU FOR USING MIDWEST WIRELINE LLC
785-625-3858

Your Midwest Wireline Crew	This Log Record Was Witnessed By
Engineer: T. Martin	Primary Witness: Sean Deenihan
Operator:	Secondary Witness:
Operator:	Secondary Witness:
Operator:	Secondary Witness:

Case No.	Offset (ft)	Schematic	Description	Length (ft)	O.D. (in)	Weight (lb)
----------	-------------	-----------	-------------	-------------	-----------	-------------

Sensor	Offset (ft)	Schematic	Description	Length (ft)	O.D. (in)	Weight (lb)
MCAL MI MN	25.50 25.50 25.50		ML-Pengo (Pengo1)	5.50	3.50	100.00
			CENT-PENGO (4-PENGO)	4.25	3.00	70.00
WVF4 WVF1	12.25 12.25		SLT-PENGO (601) 3 1/2 BHC Sonic	16.00	3.50	300.00
WVF3 WVF2	10.25 10.25					
			CENT-PENGO (3-PENGO)	4.25	3.00	70.00

Dataset: satchell_worcester a #4-22.db: field/well/SonMel/pass3
 Total length: 30.00 ft
 Total weight: 540.00 lb
 O.D.: 3.50 in

Log Variables

DatabaseC:\ProgramData\Warrior\Data\satchell_worcester a #4-22.db
 Dataset field/well/Stack/pass3.1/_vars_

Top - Bottom

BOREID in 7.875	BOTTEMP degF 115	CASEOD in 5.5	CASETHCK in 0	FLUIDDEN g/cc 1	MATRXDEN g/cc 2.71	NPORSEL Limestone	PERFS No
SNDERR mmho/m -2	SNDERRM mmho/m 0	SPSHIFT mV 380	SRFTEMP degF 85	SZCOR Off	TDEPTH ft 3907		

Variable Description

BOREID : Borehole I.D.
 BOTTEMP : Bottom Hole Temperature
 CASEOD : Casing O.D.
 CASETHCK : Casing Thickness
 FLUIDDEN : Fluid Density
 MATRXDEN : Matrix Density
 NPORSEL : Neutron Porosity Curve Select

PERFS : Perforation Flag
 SNDERR : Deep Sonde Error Correction
 SNDERRM : Medium Sonde Error Correction
 SPSHIFT : S.P. Baseline Offset
 SRFTEMP : Surface Temperature
 SZCOR : CN Size Cor. ?
 TDEPTH : Total Depth

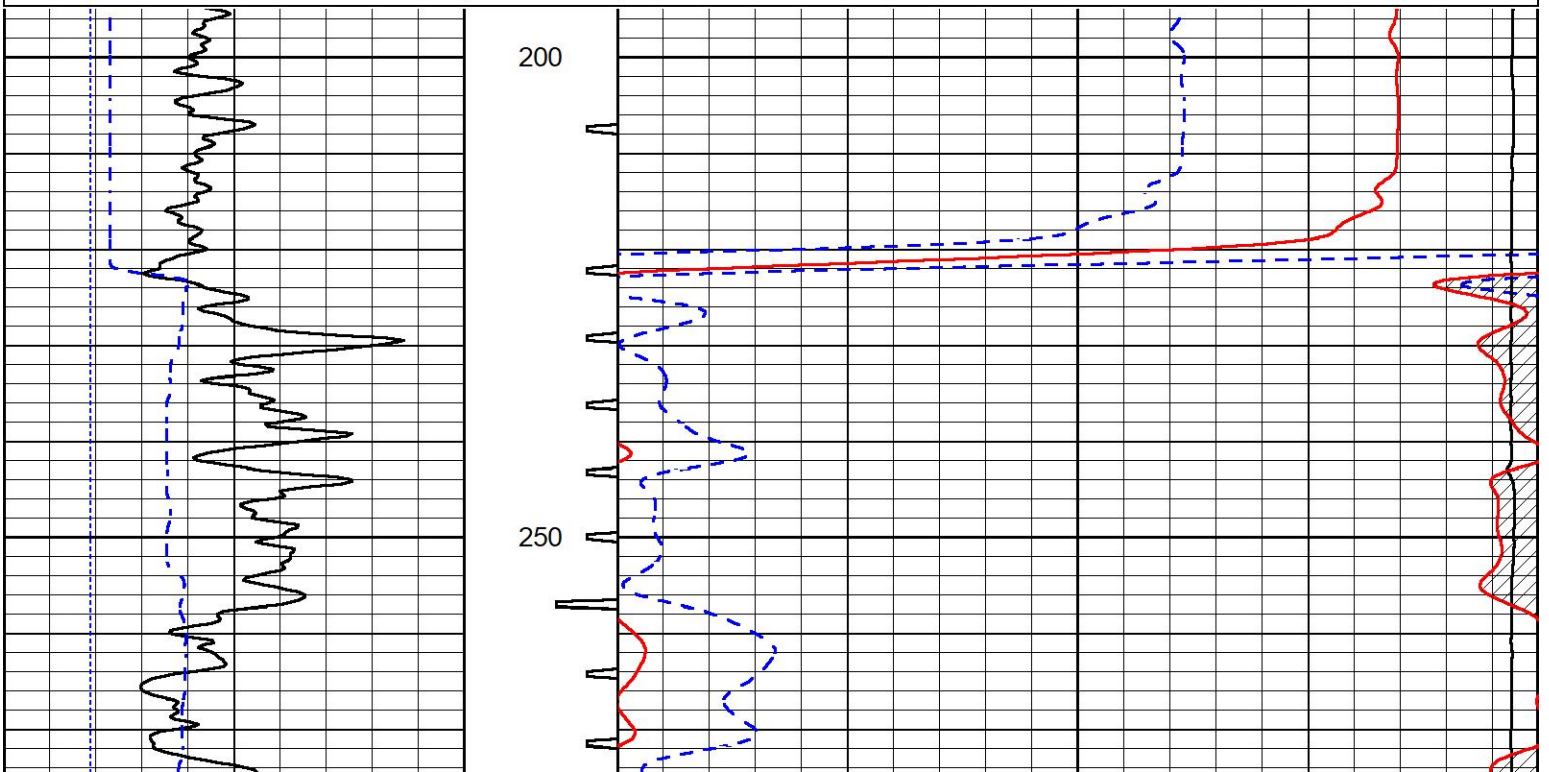


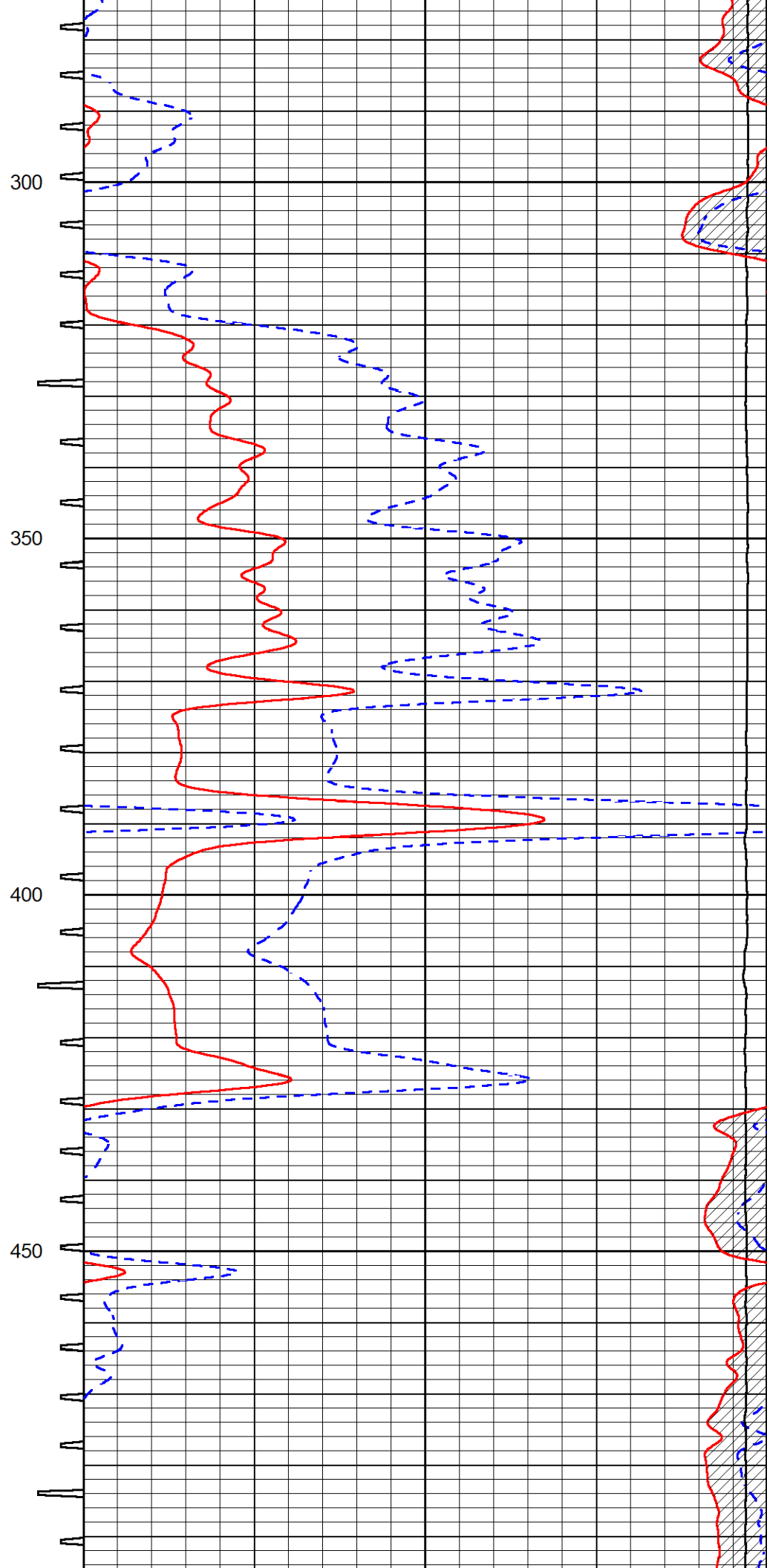
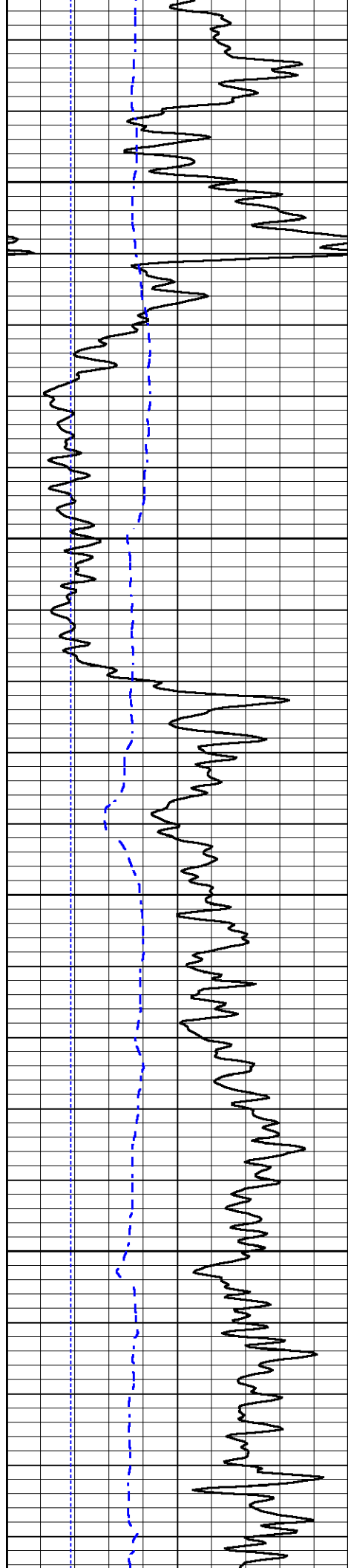
DETAIL SECTION

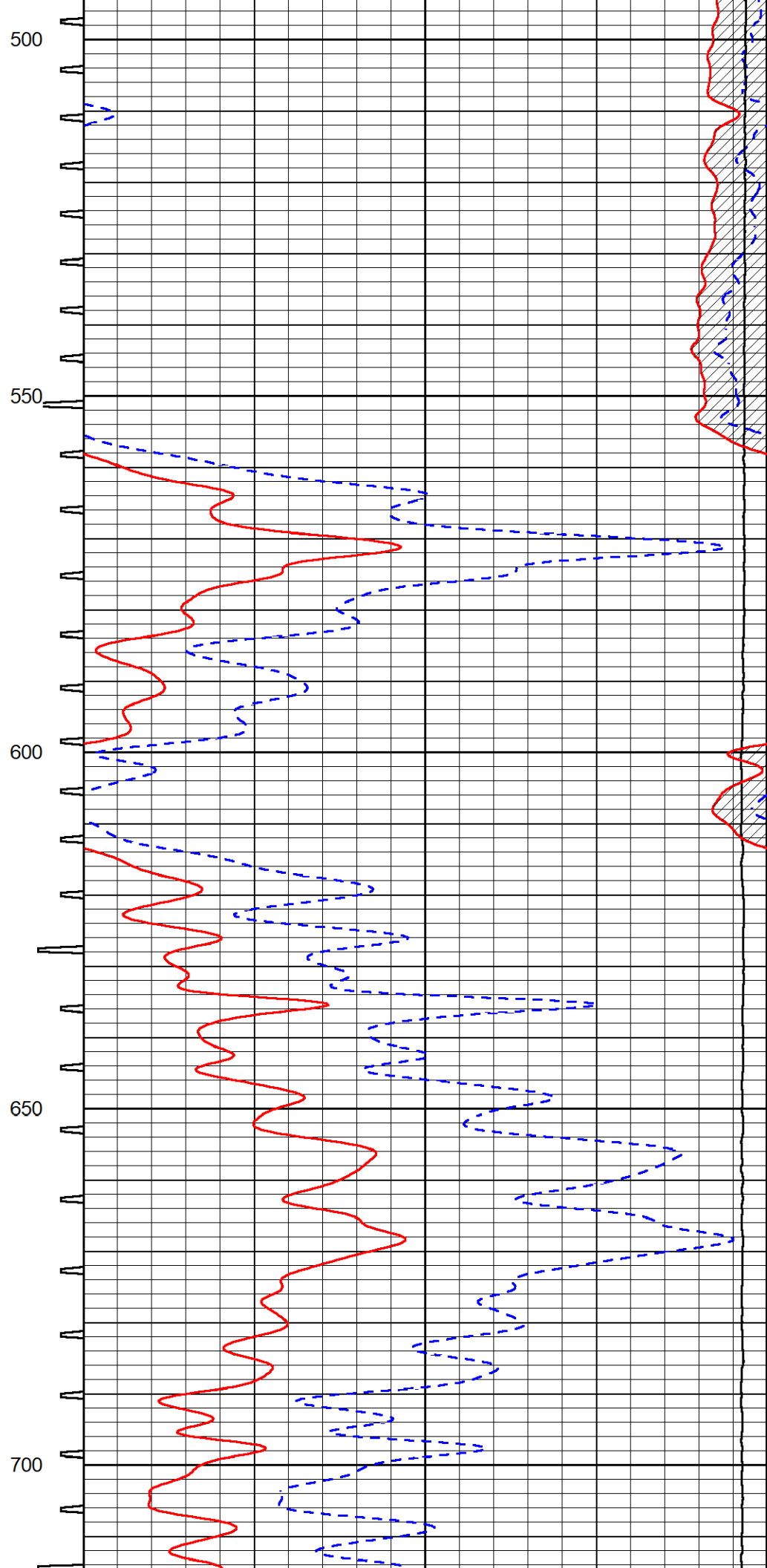
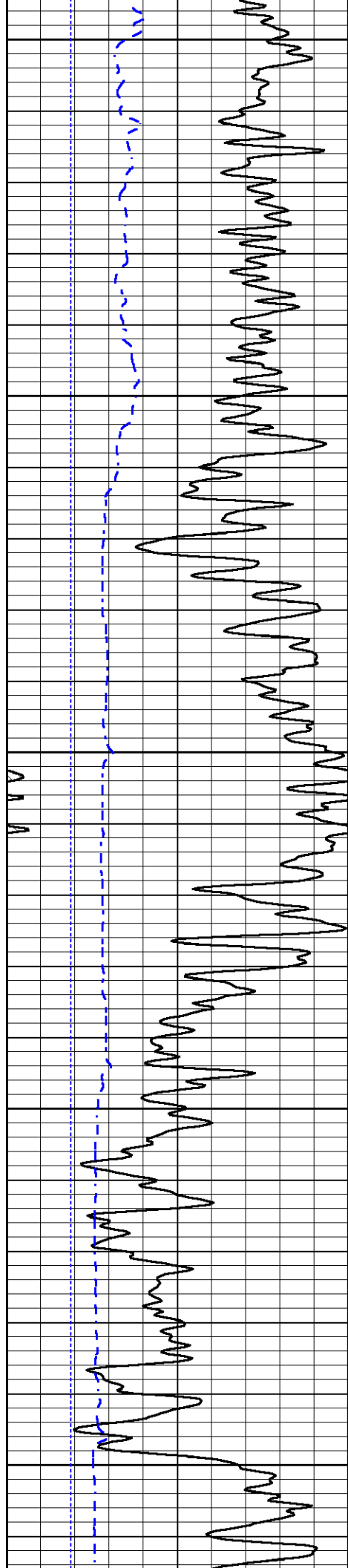
MAIN PASS

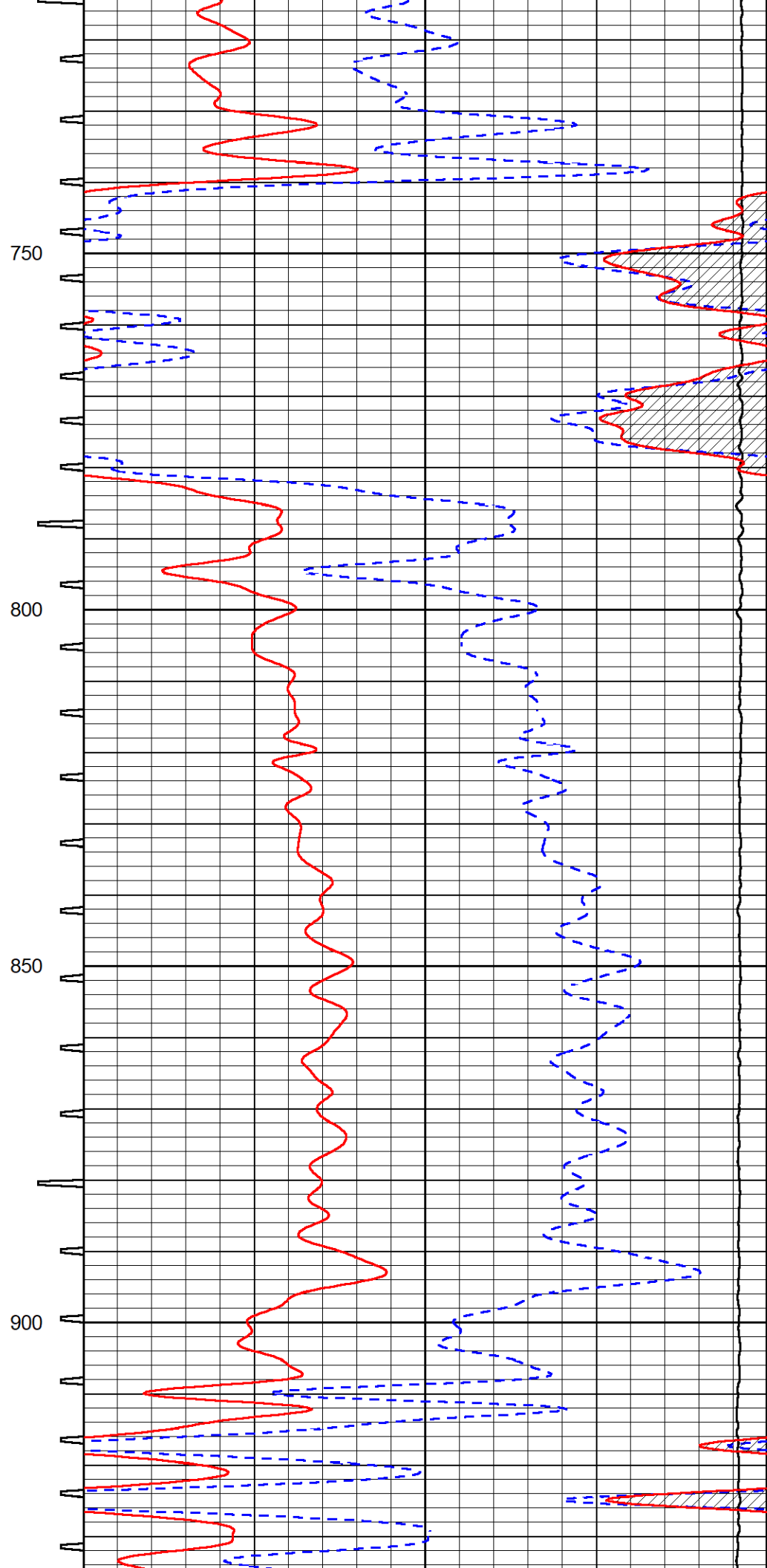
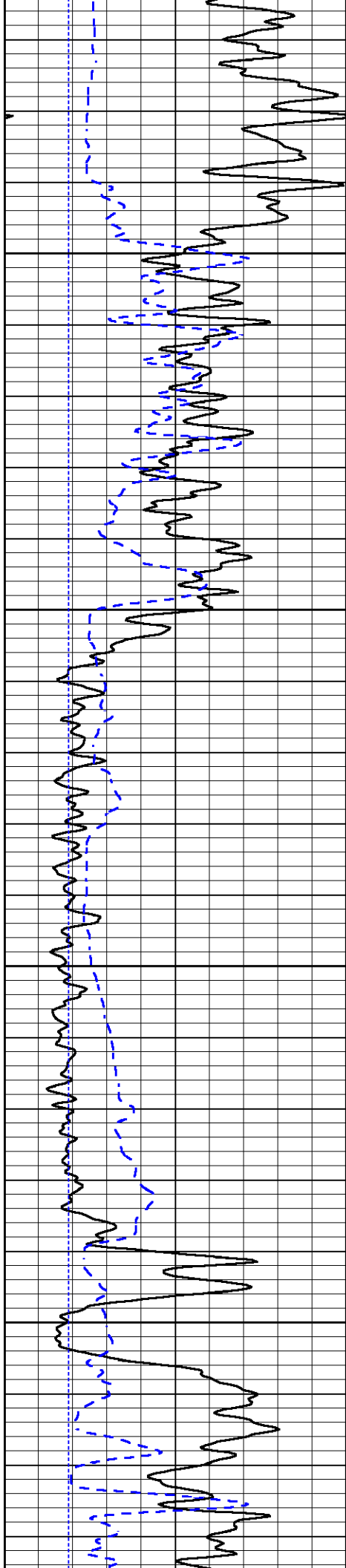
Database File satchell_worcester a #4-22.db
 Dataset Pathname Stack/pass3.1
 Presentation Format _sonic
 Dataset Creation Sat Jul 15 14:00:24 2023
 Charted by Depth in Feet scaled 1:240

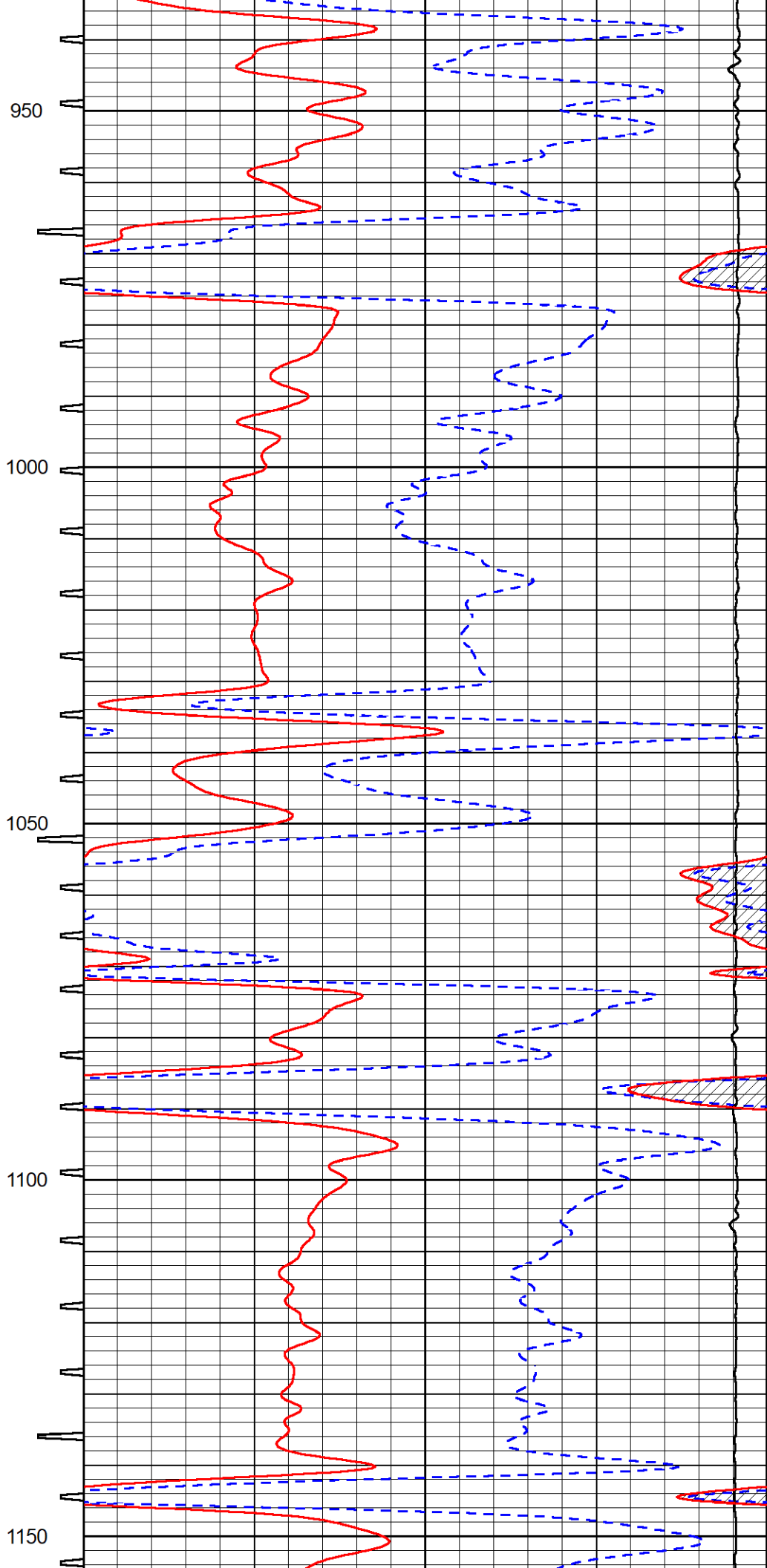
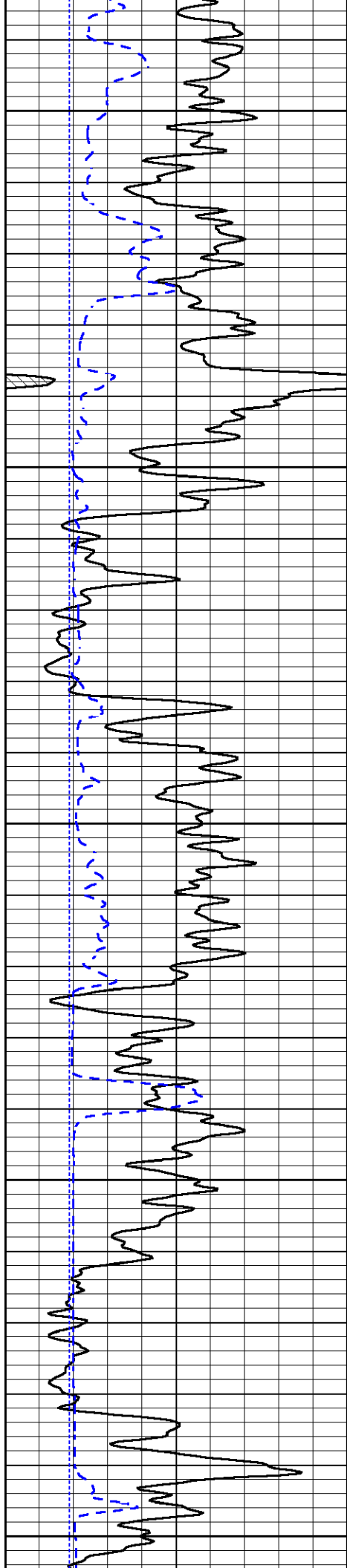
0	Gamma Ray (GAPI)	150	Sonic Int	140	Delta Time (usec/ft) (usec/ft)	40
150	GR (GAPI)	300	5 (msec) 0	30	Sonic Porosity (pu) (pu)	-10
6	Caliper (in)	16		15000	Line Tension (lb)	0

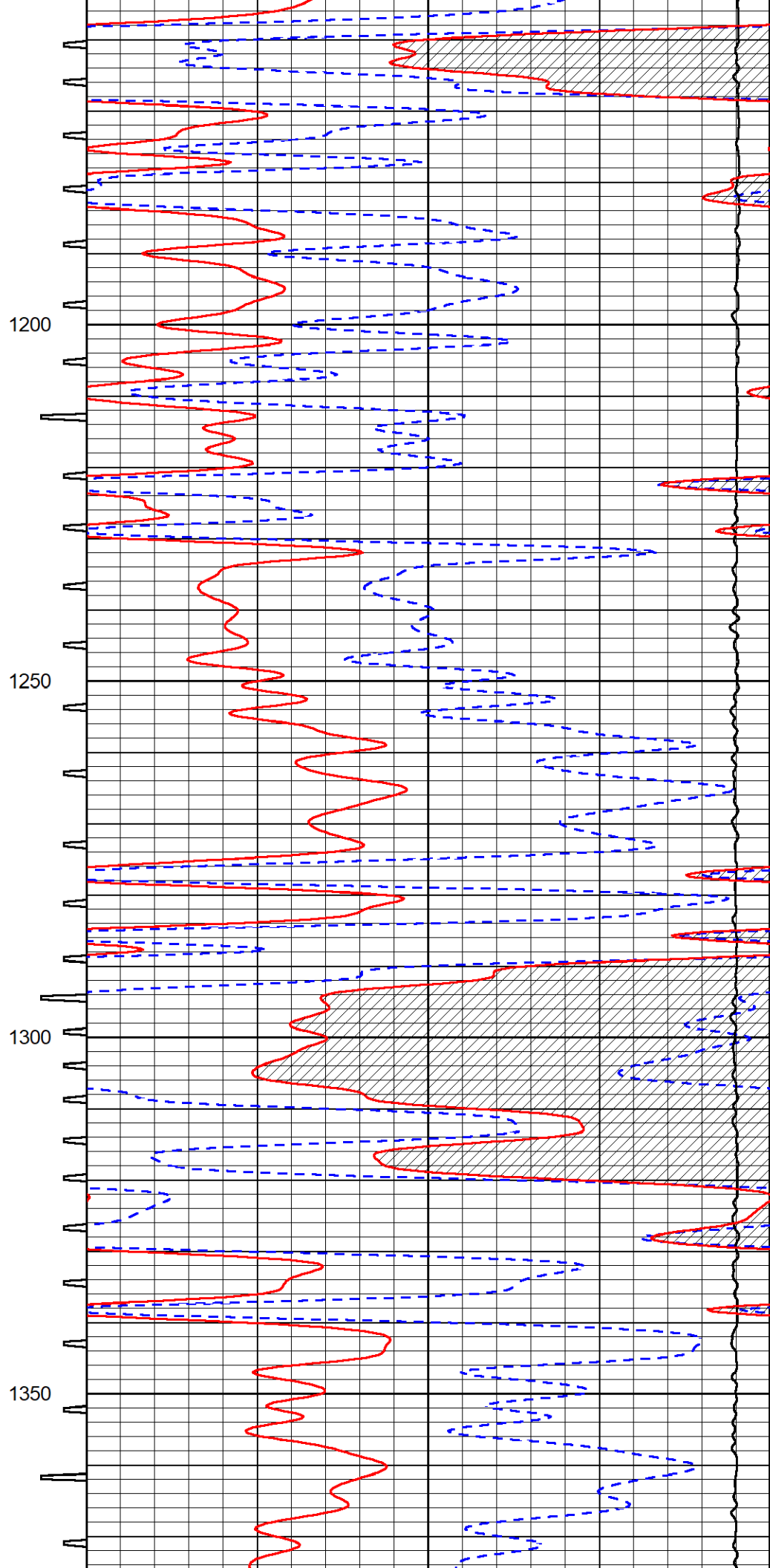
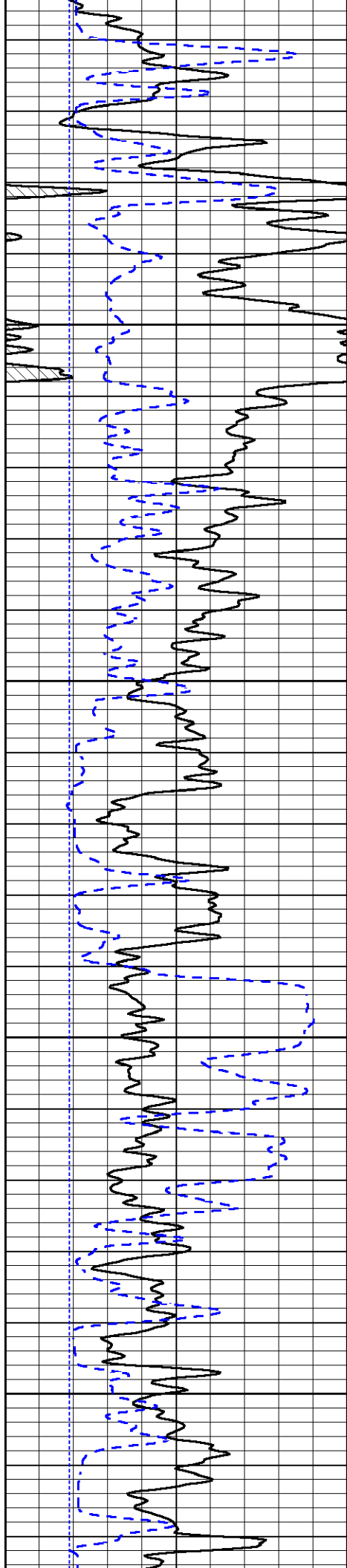


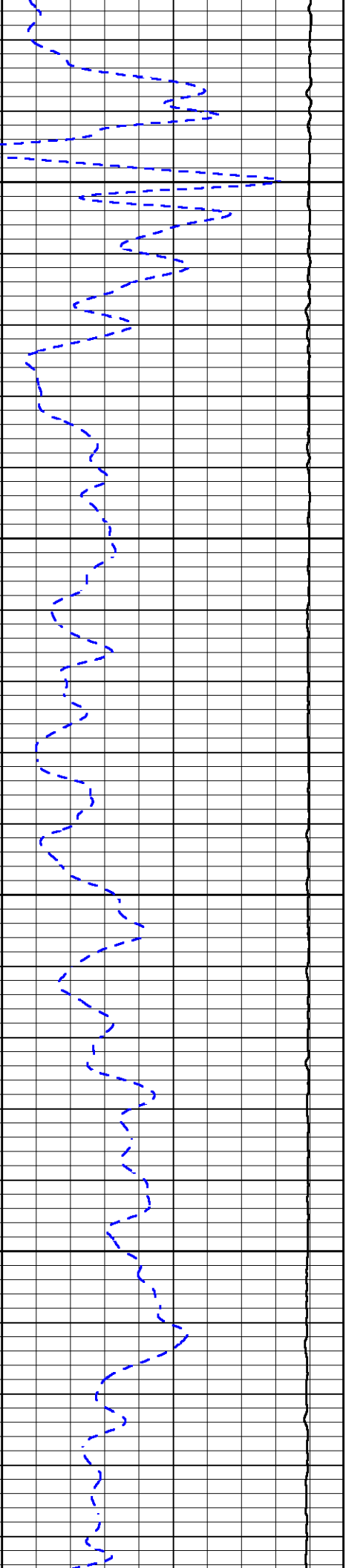
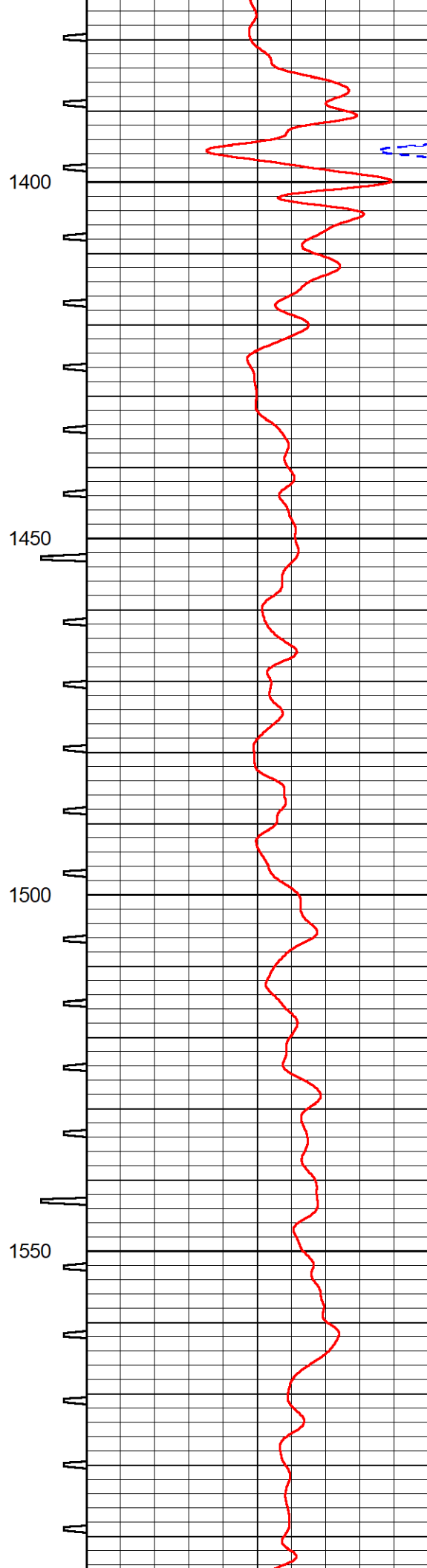
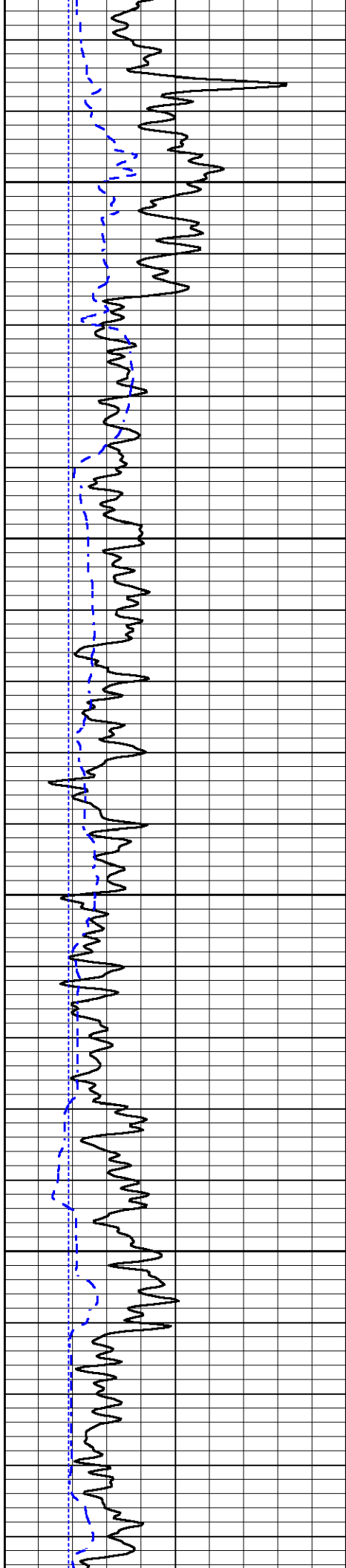


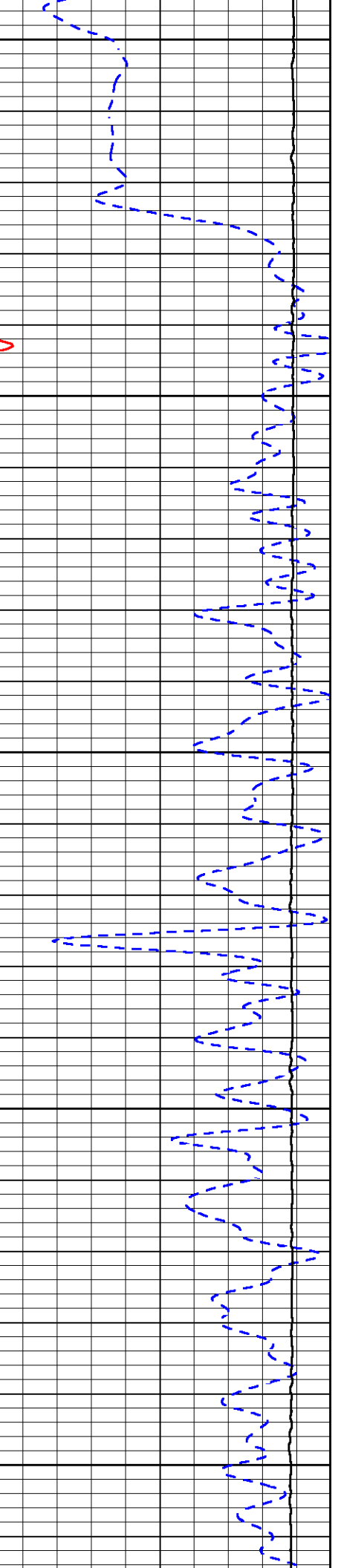
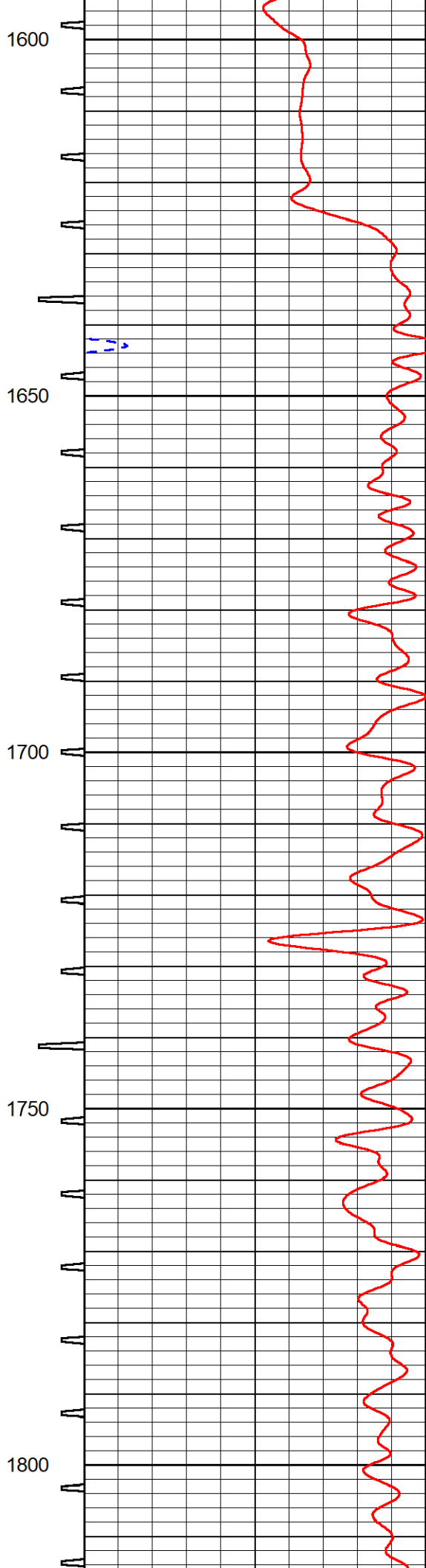
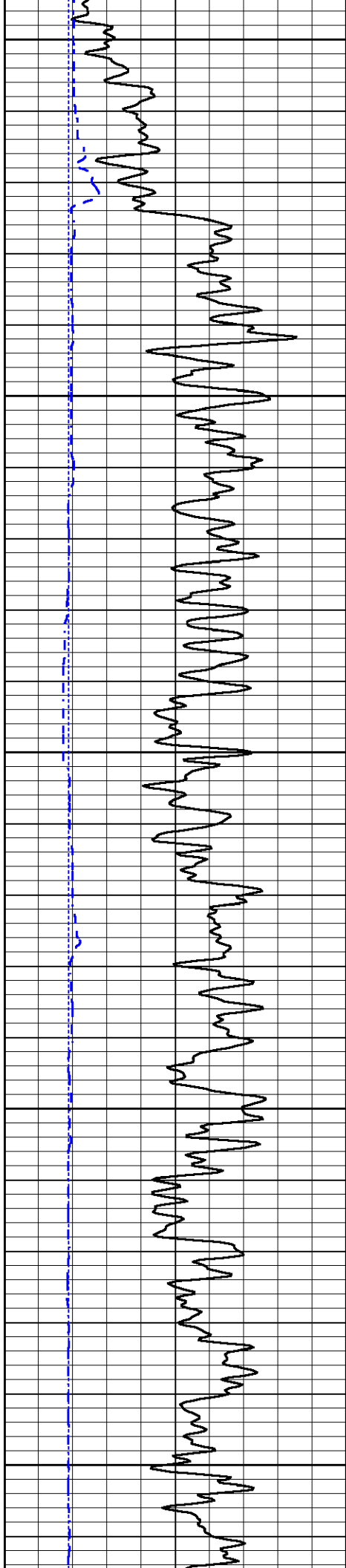


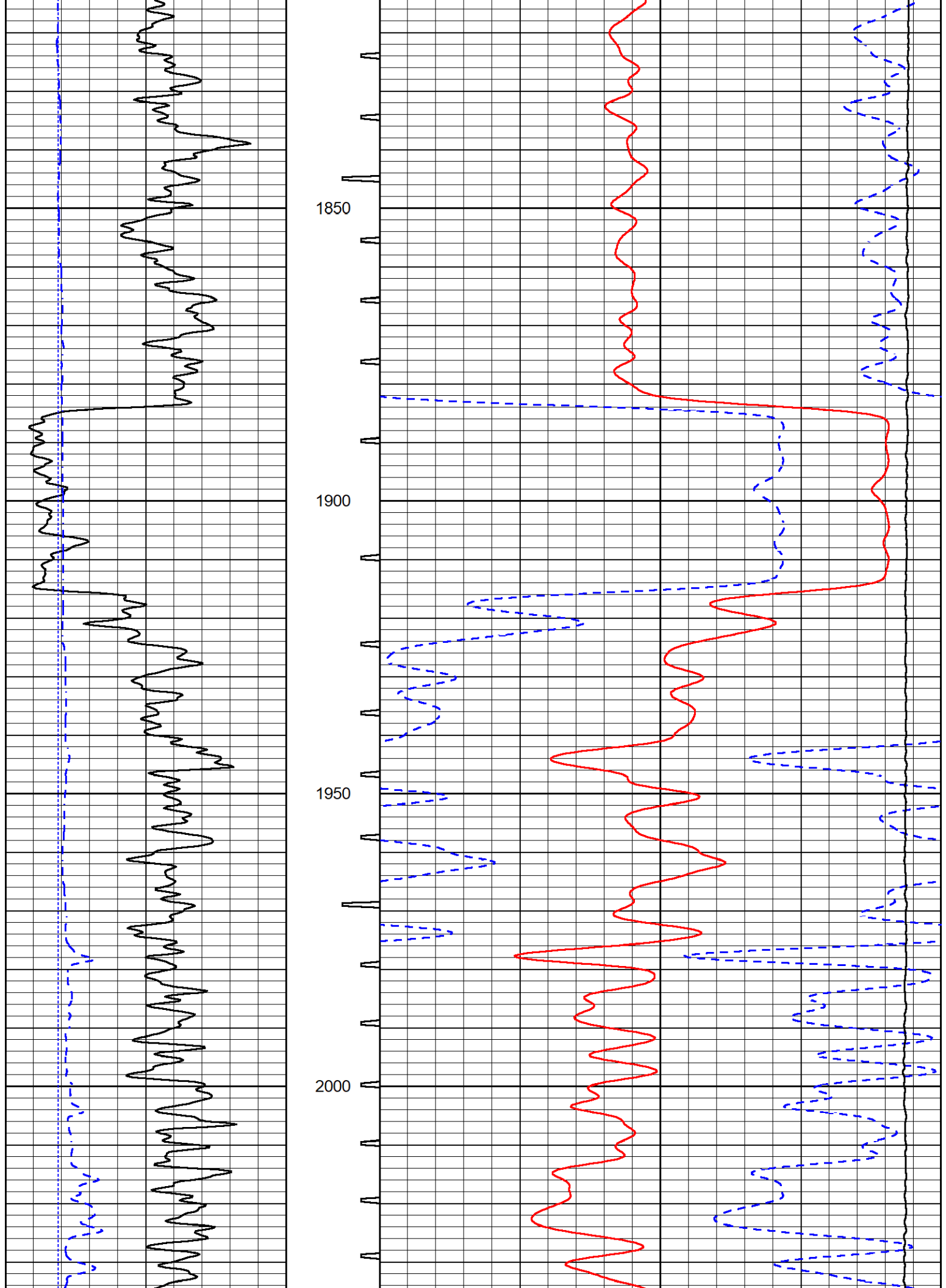


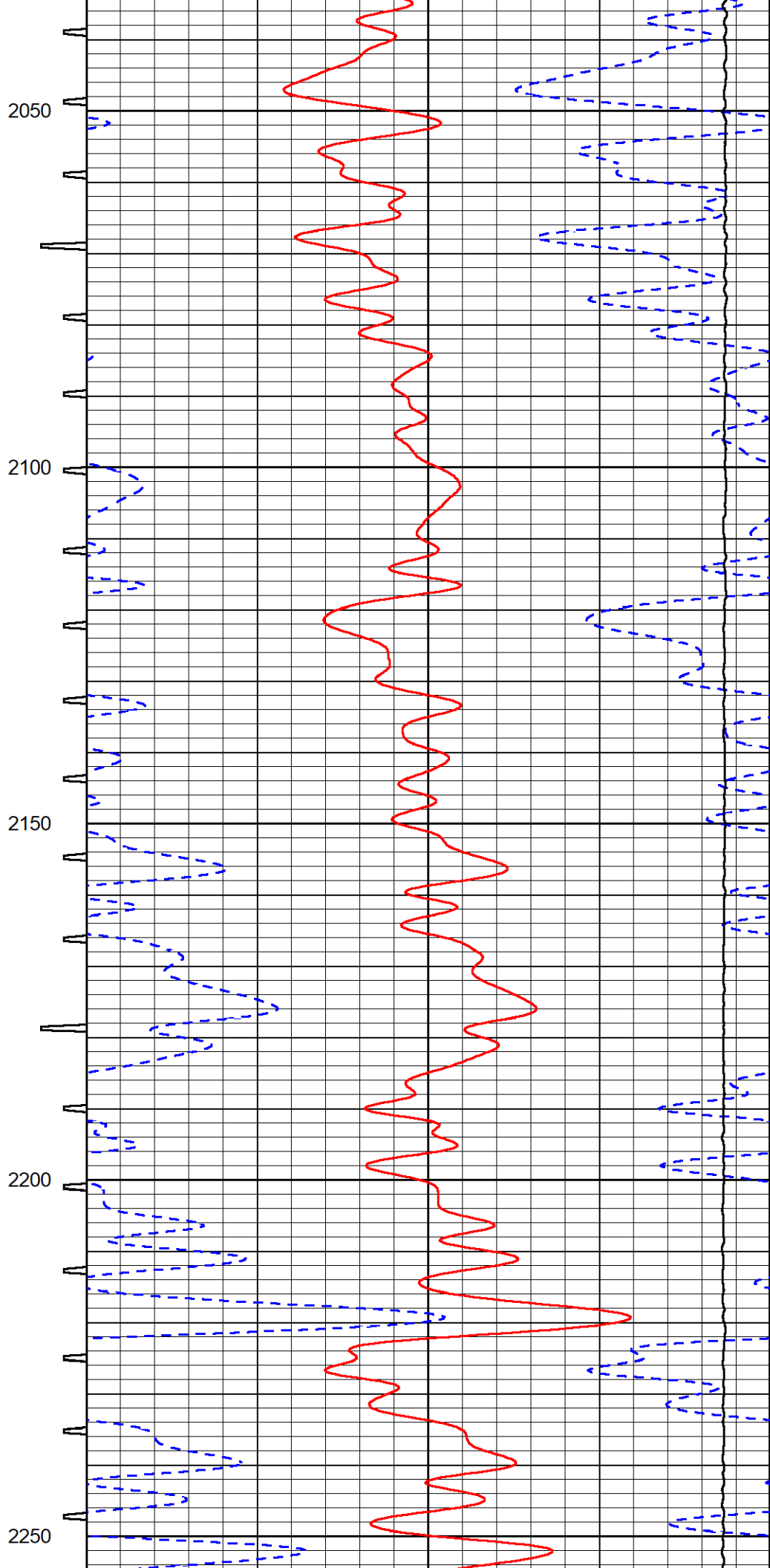
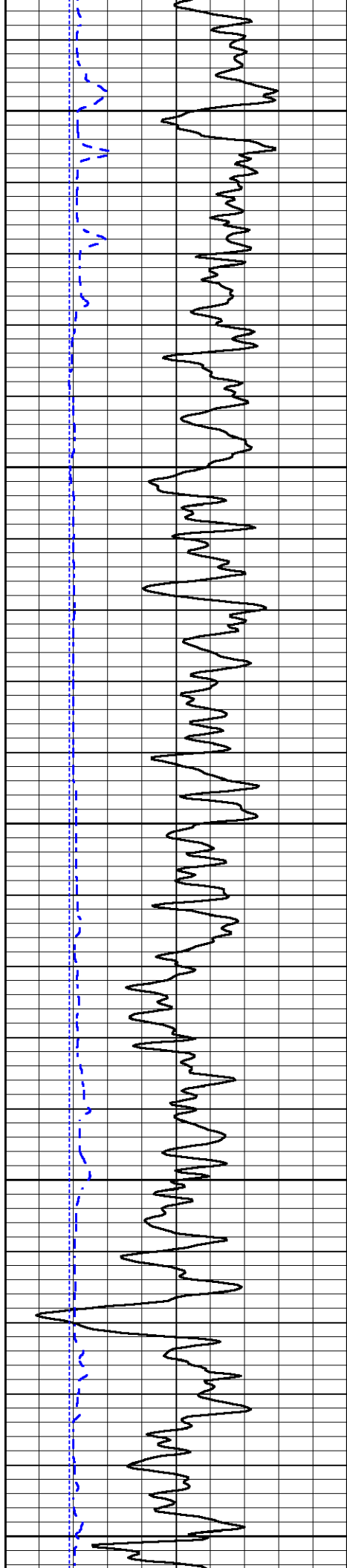


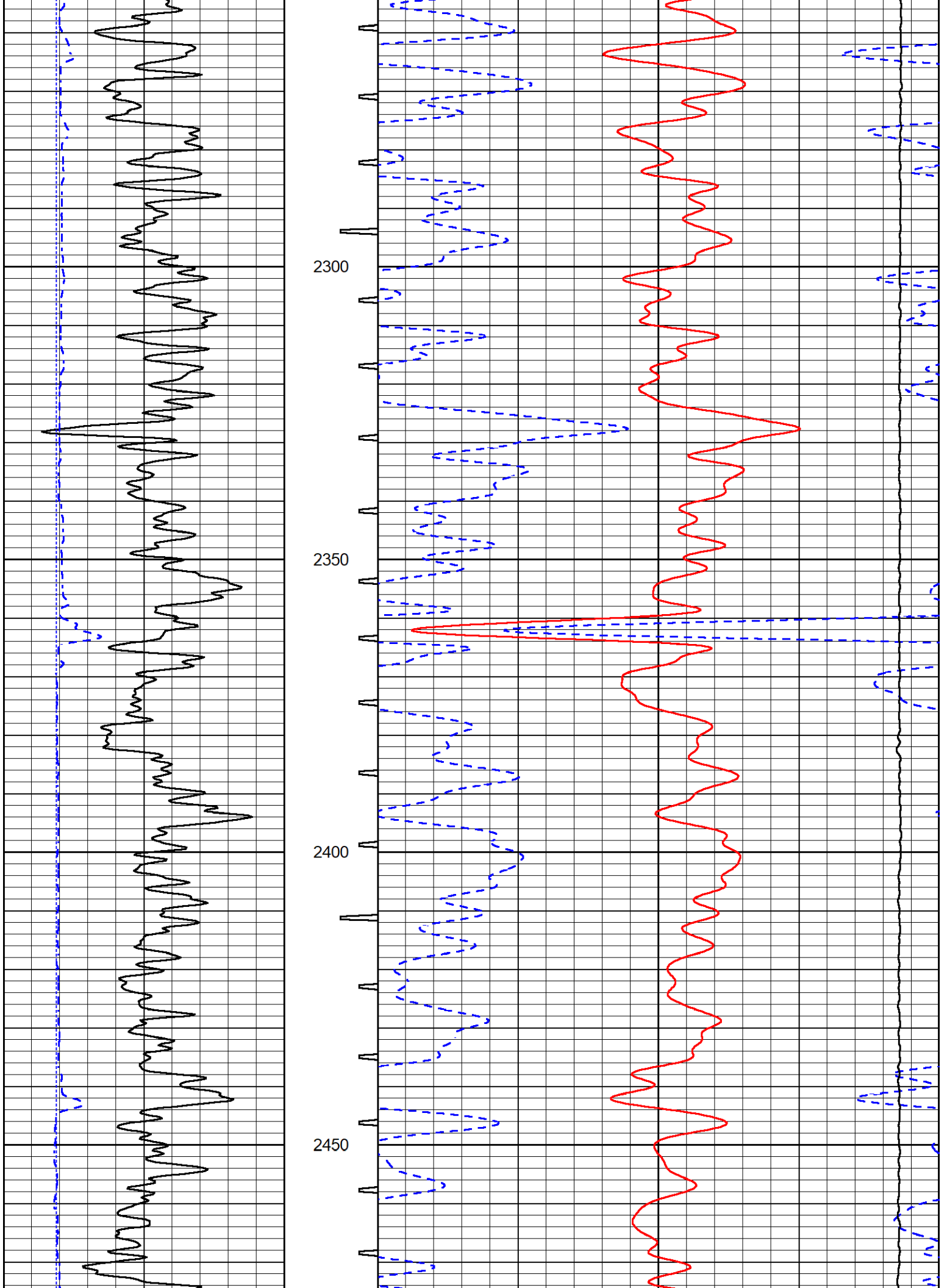


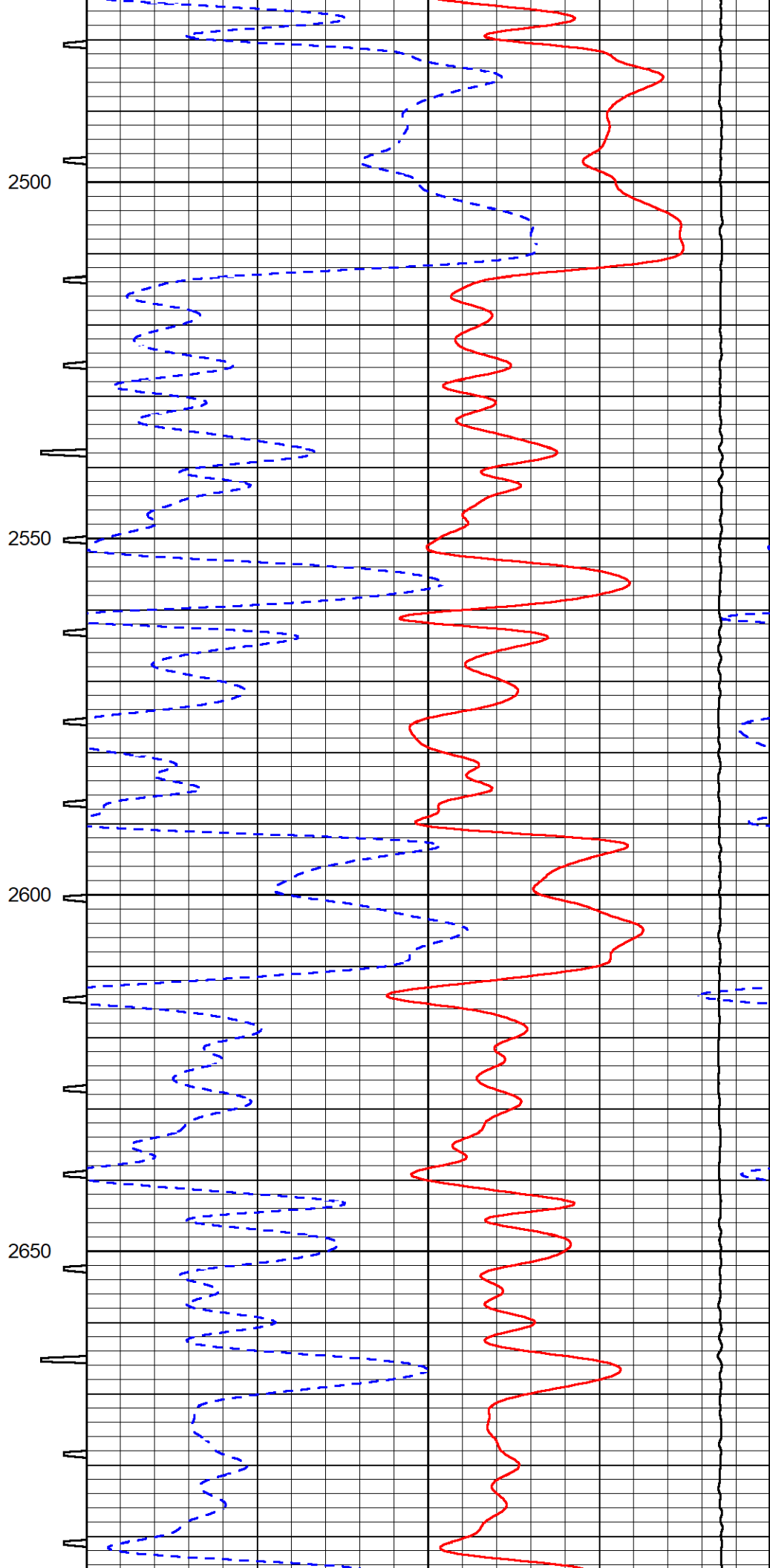
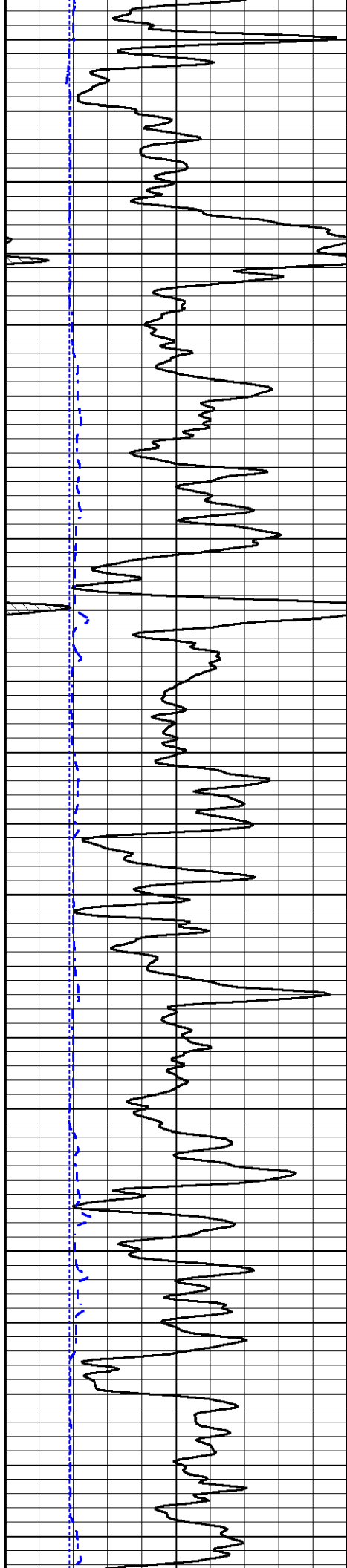


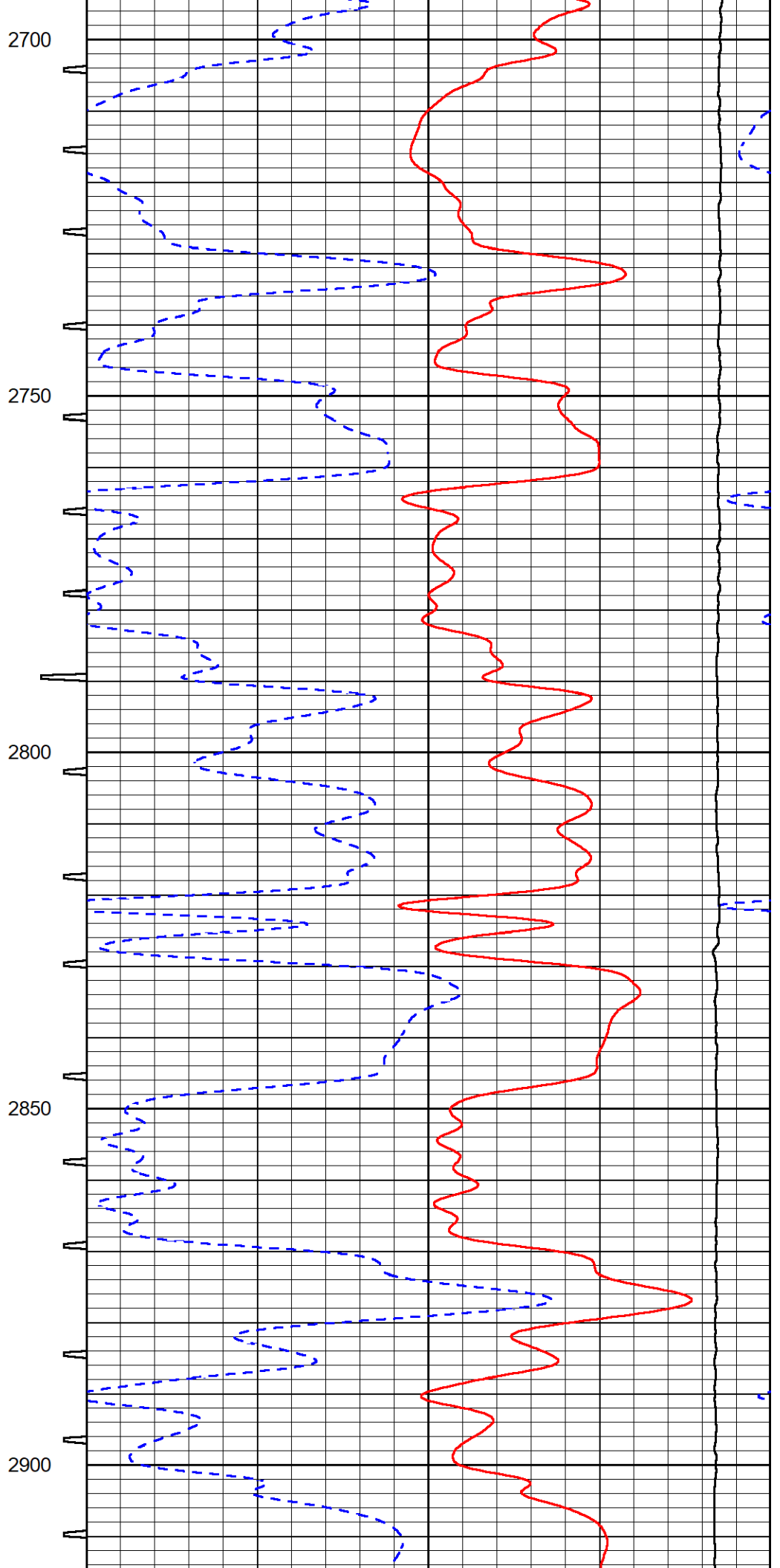
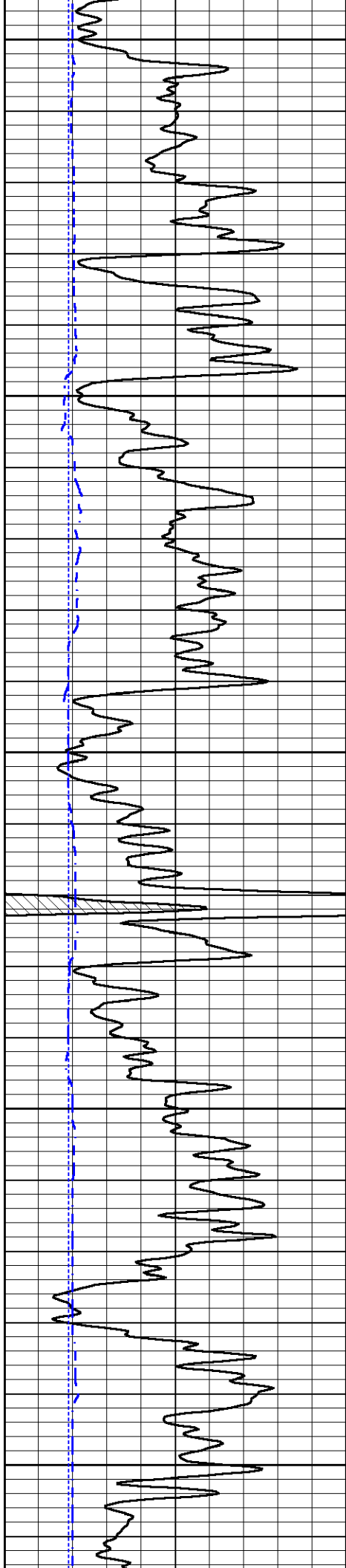


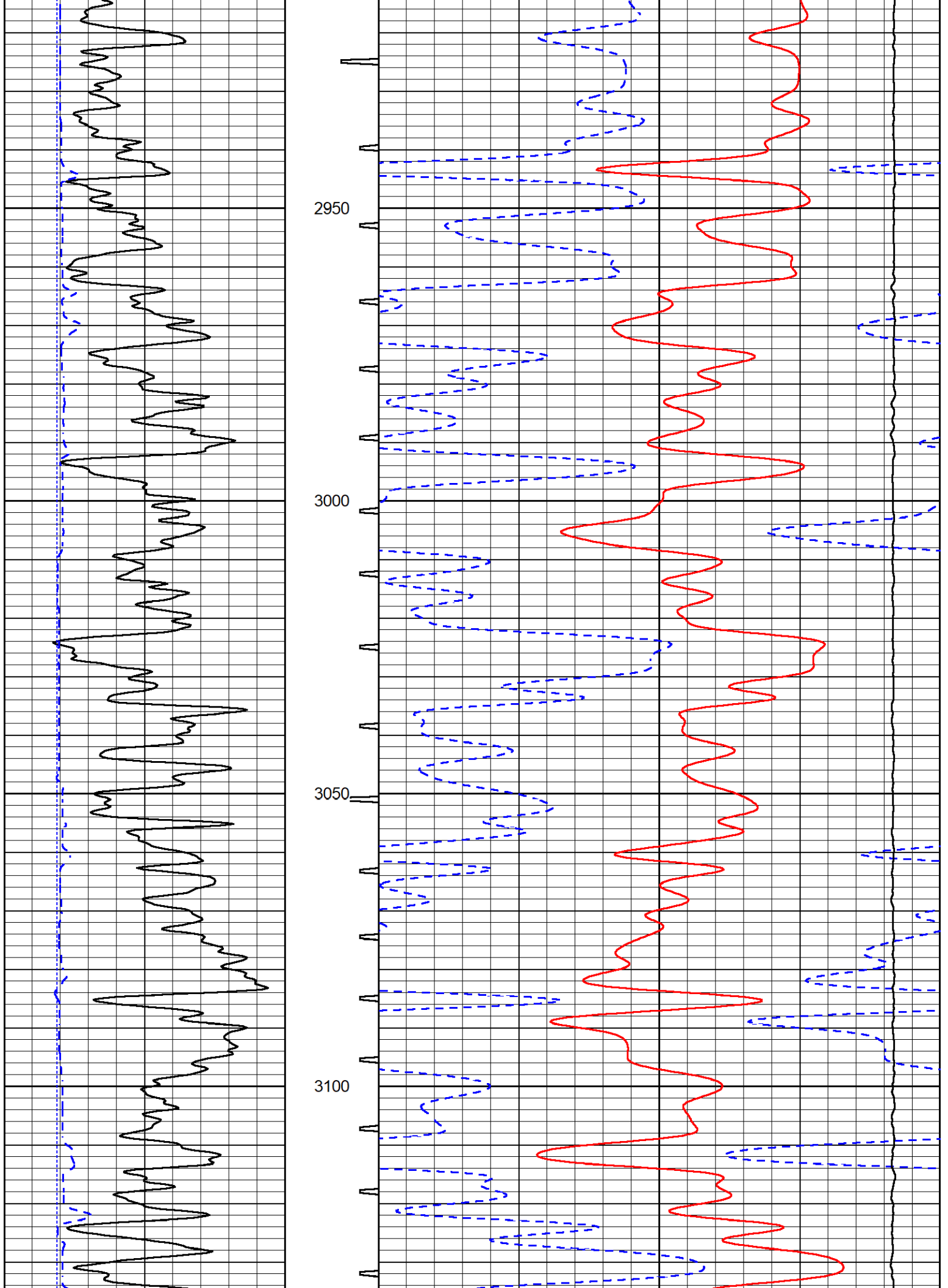


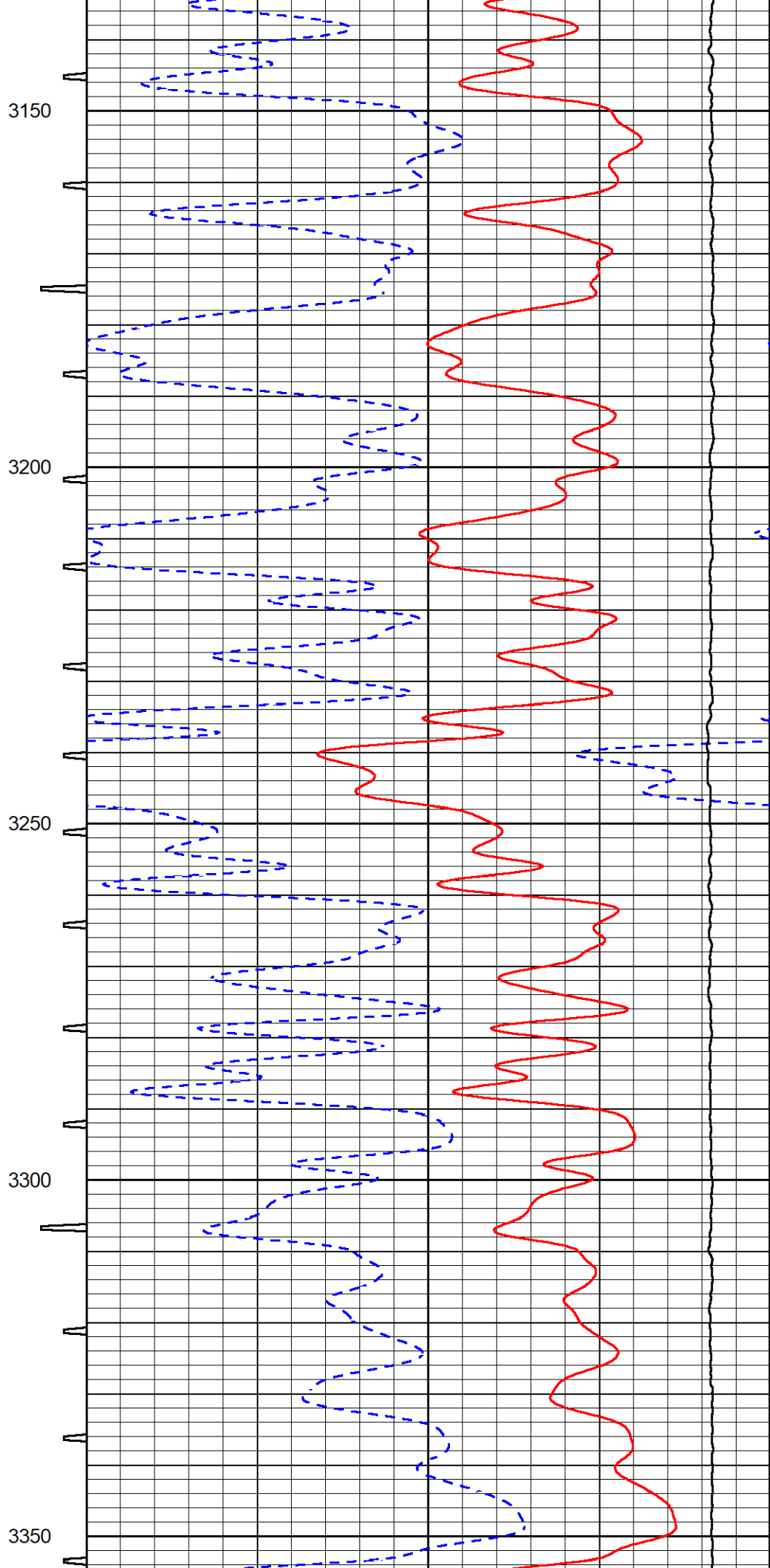
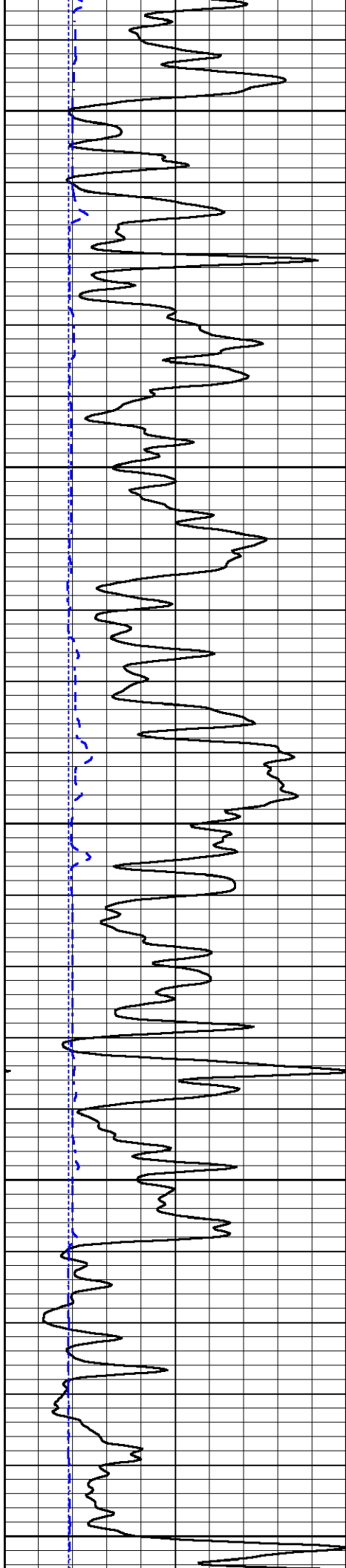


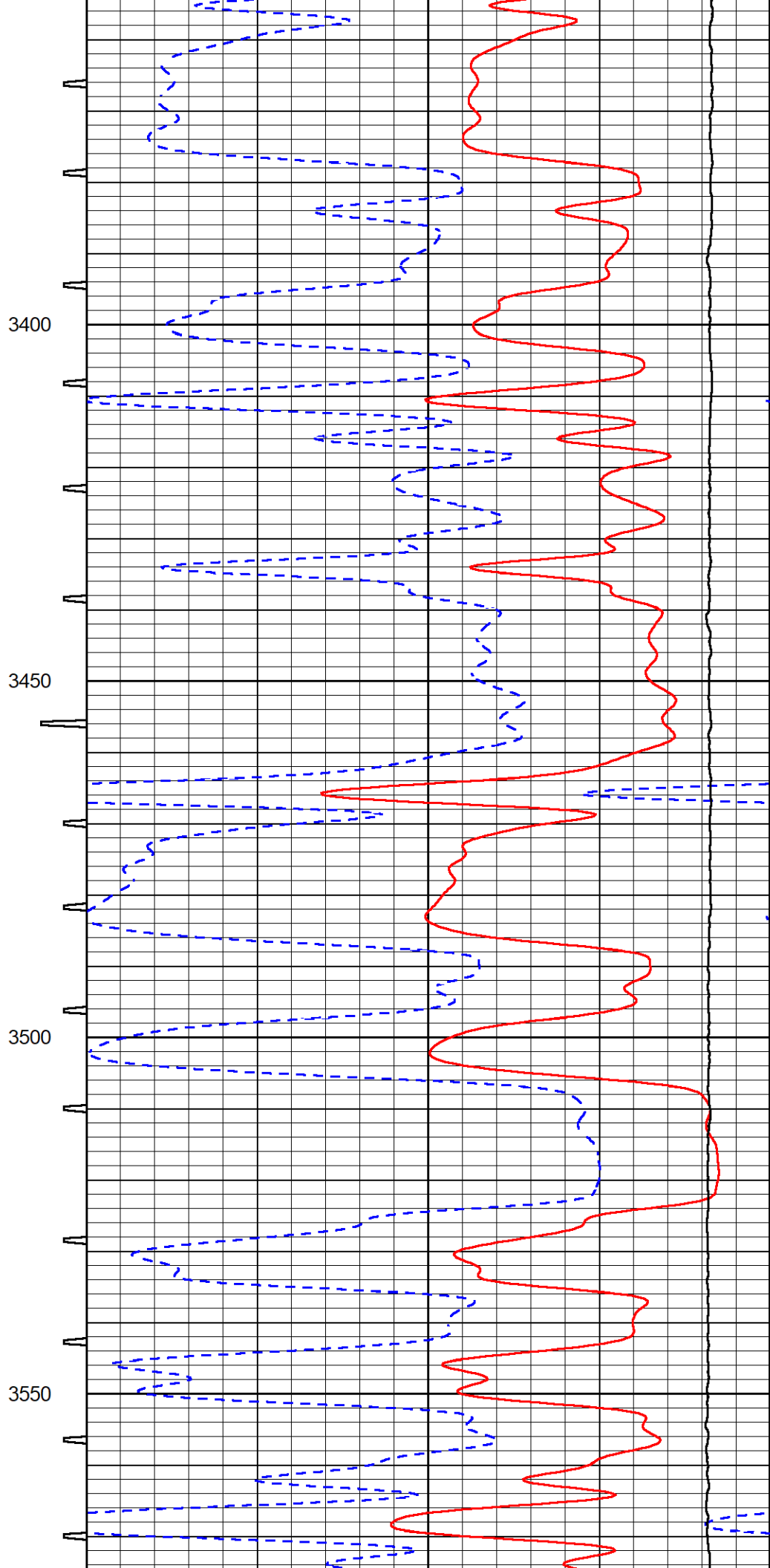
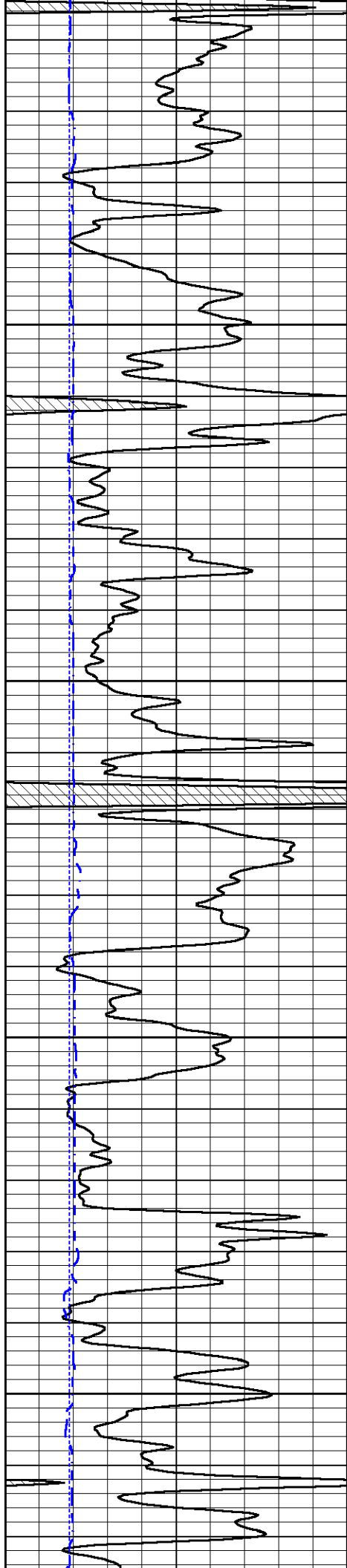


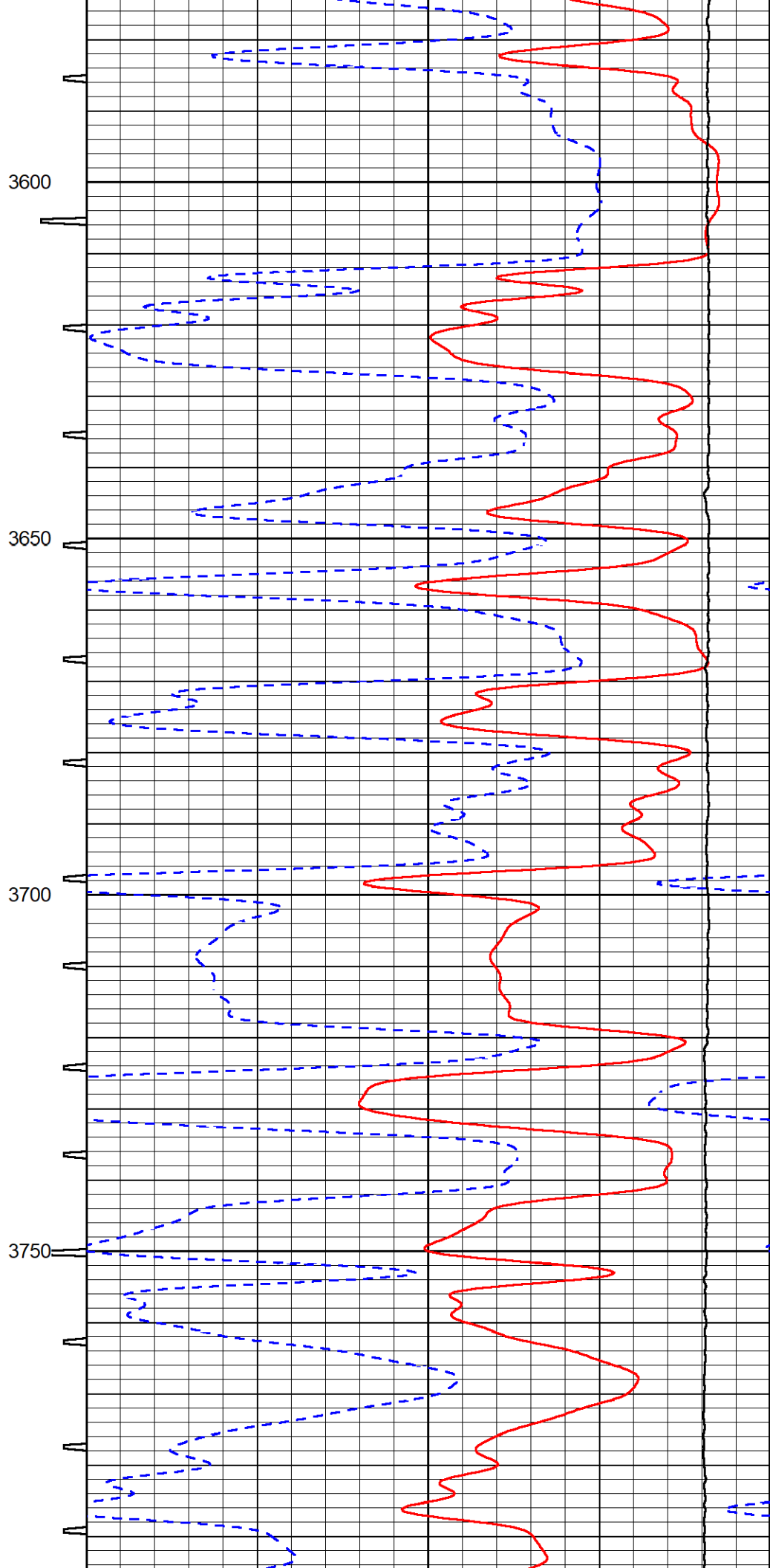
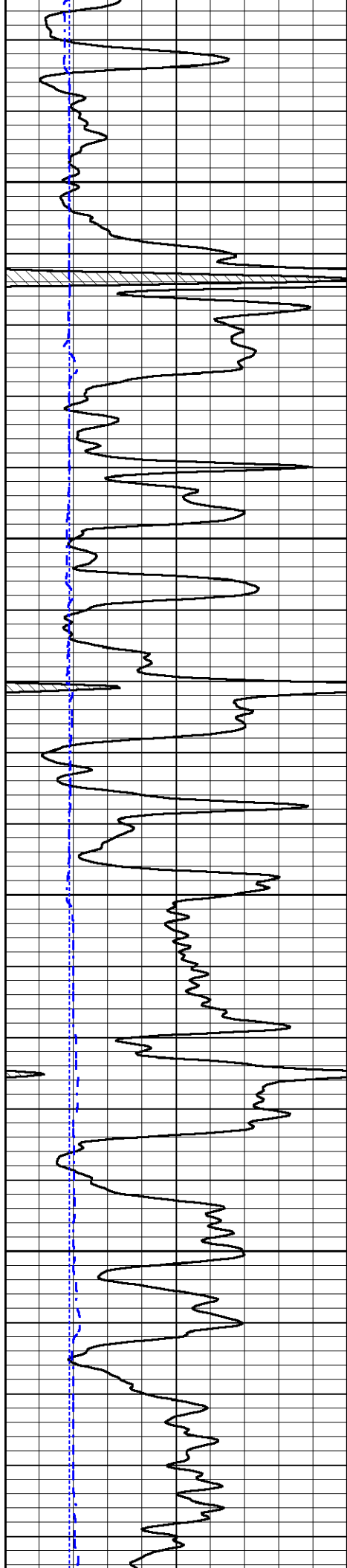


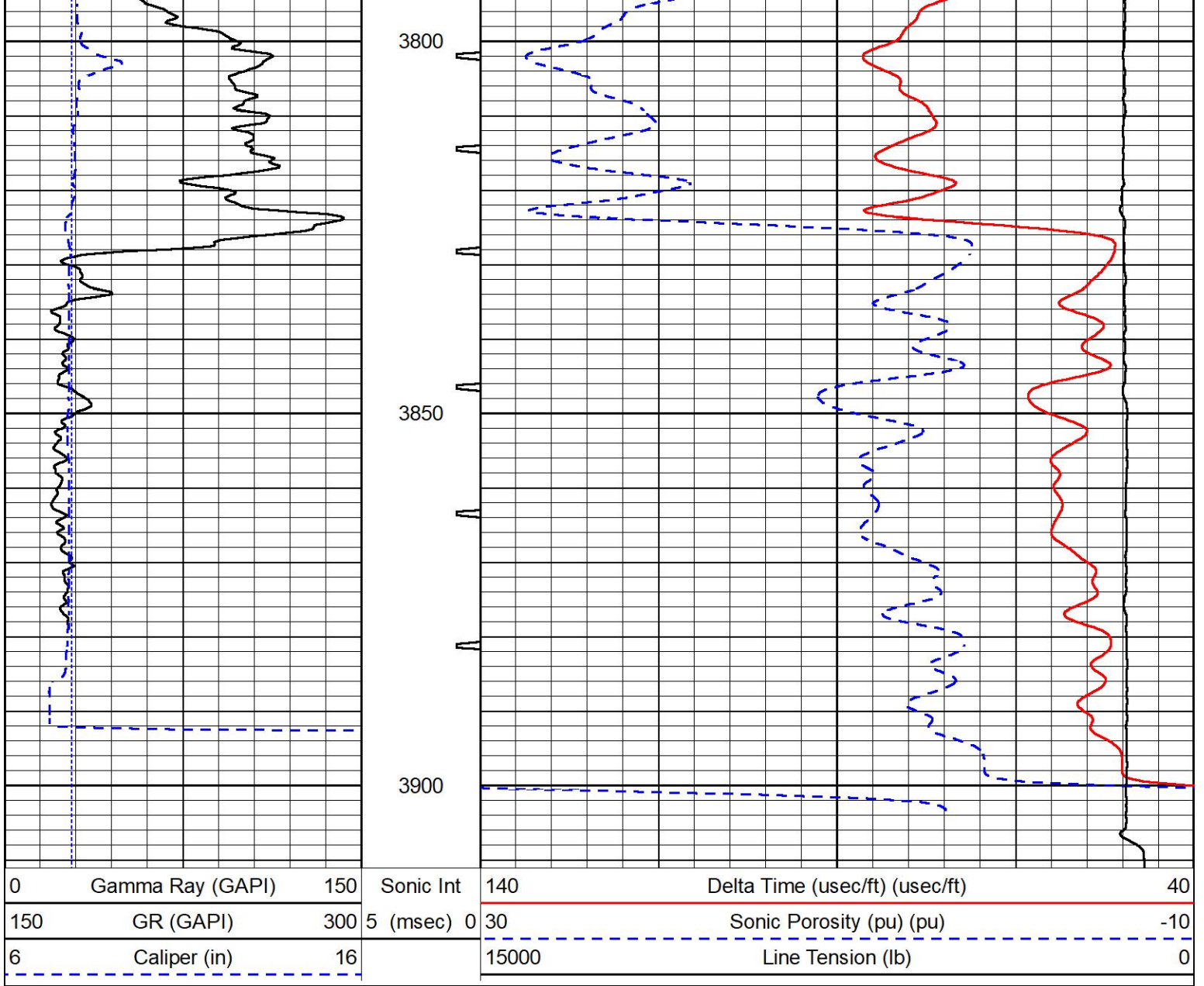










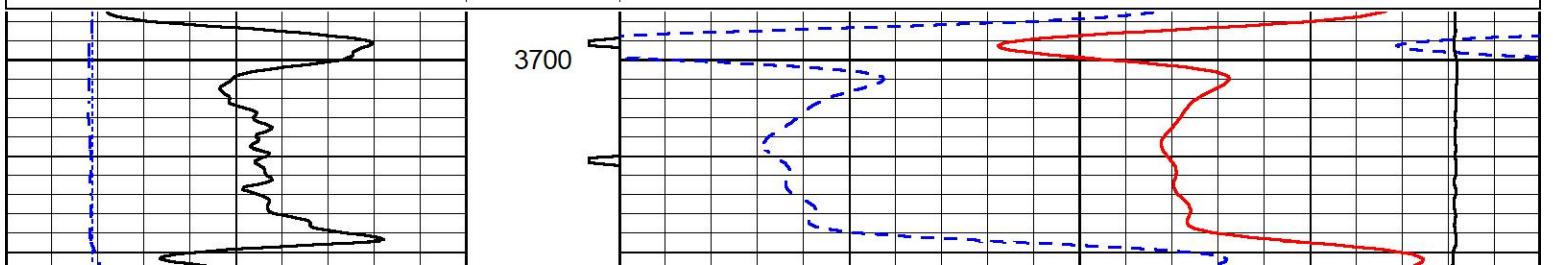


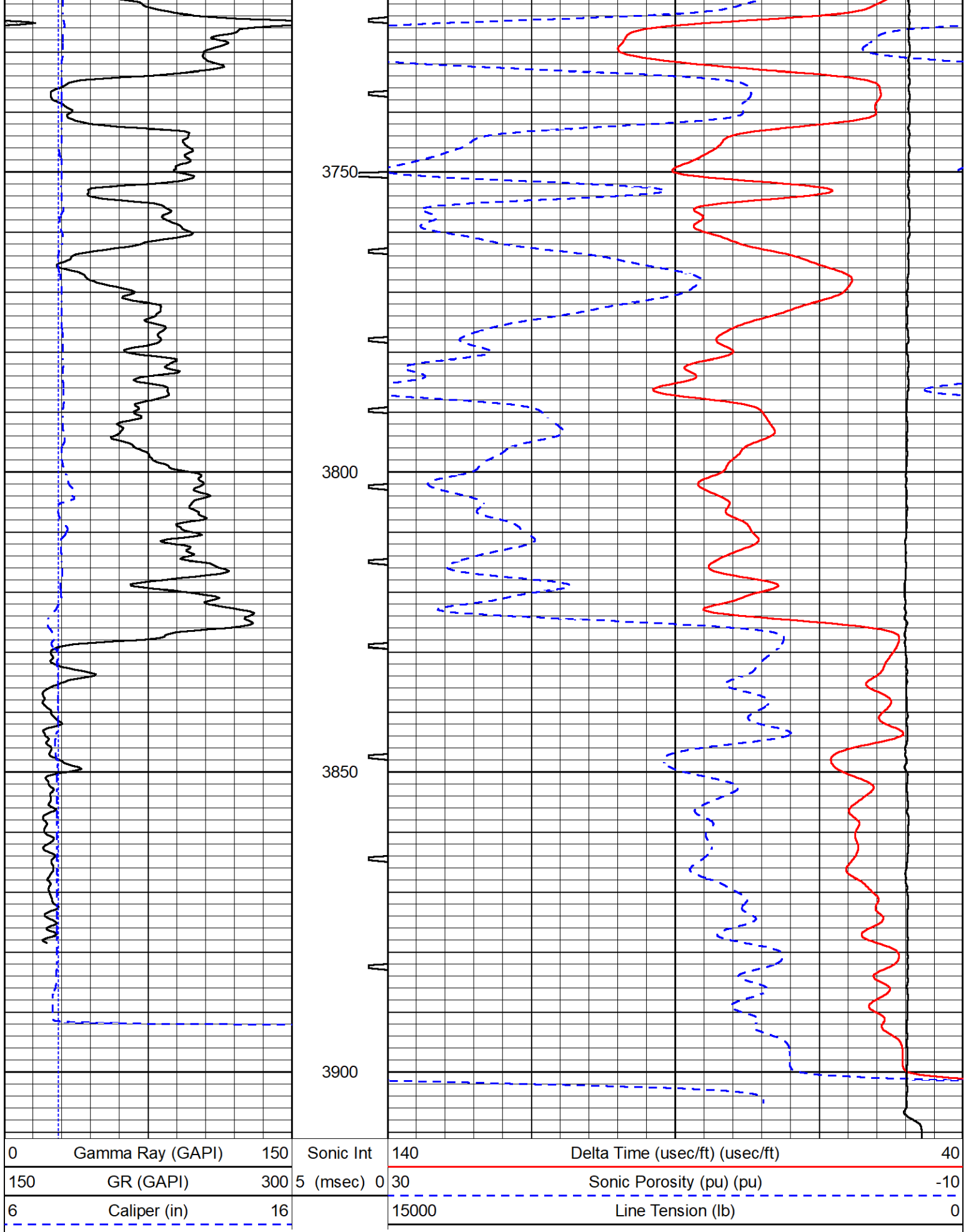
REPEAT SECTION

REPEAT PASS

Database File satchell_worcester a #4-22.db
 Dataset Pathname Stack/pass2.1
 Presentation Format _sonic
 Dataset Creation Sat Jul 15 13:16:31 2023
 Charted by Depth in Feet scaled 1:240

0	Gamma Ray (GAPI)	150	Sonic Int	140	Delta Time (usec/ft) (usec/ft)	40
150	GR (GAPI)	300	5 (msec) 0	30	Sonic Porosity (pu) (pu)	-10
6	Caliper (in)	16		15000	Line Tension (lb)	0





Company Satchell Creek Petroleum LLC



MIDWEST WIRELINE

Well	Worcester A #4-22
Field	Alda South
County	Graham
State	Kansas