

Company PALOMINO PETROLEUM, INC.  
Well DINGES TRUST #4  
Field DEX SOUTHWEST  
County NESS  
State KANSAS

Company PALOMINO PETROLEUM, INC.  
Well DINGES TRUST #4  
Field DEX SOUTHWEST  
County NESS State KANSAS

Location: 1002' FSL & 1301' FEL API #: 15-135-26110-0000 Other Services

SEC 14 TWP 18S RGE 25W

Permanent Datum GROUND LEVEL Elevation 2410'  
Log Measured From KELLY BUSHING 5' A.G.L.  
Drilling Measured From KELLY BUSHING Elevation K.B. 2415'  
D.F. 2413'  
G.L. 2410'

Date AUG. 23, 2021

Run Number ONE  
Depth Driller 4510'  
Depth Logger 4472'  
Bottom Logged Interval 4471'  
Top Log Interval 2550'  
Open Hole Size ///  
Type Fluid WATER  
Density / Viscosity ///  
Max. Recorded Temp. 120F  
Estimated Cement Top 2670'  
Time Well Ready ///  
Time Logger on Bottom ///  
Equipment Number PT-09  
Location HAYS  
Recorded By BOB KLAUS  
Witnessed By JOE RUPP

Borehole Record		Tubing Record					
Run Number	Bit	From	To	Size	Weight	From	To
ONE	12.25"	0	218'				
TWO	7.875"	218'	4510'				

Casing Record		Size	Wgt/Ft	Top	Bottom
Surface String	8 5/8"			0	218'
Prot. String					
Production String	5 1/2"		14#	0	4506'
Liner					

<<< Fold Here >>>

All interpretations are opinions based on inferences from electrical or other measurements and we cannot and do not guarantee the accuracy or correctness of any interpretation, and we shall not, except in the case of gross or willful negligence on our part, be liable or responsible for any loss, costs, damages, or expenses incurred or sustained by anyone resulting from any interpretation made by any of our officers, agents or employees. These interpretations are also subject to our general terms and conditions set out in our current Price Schedule.

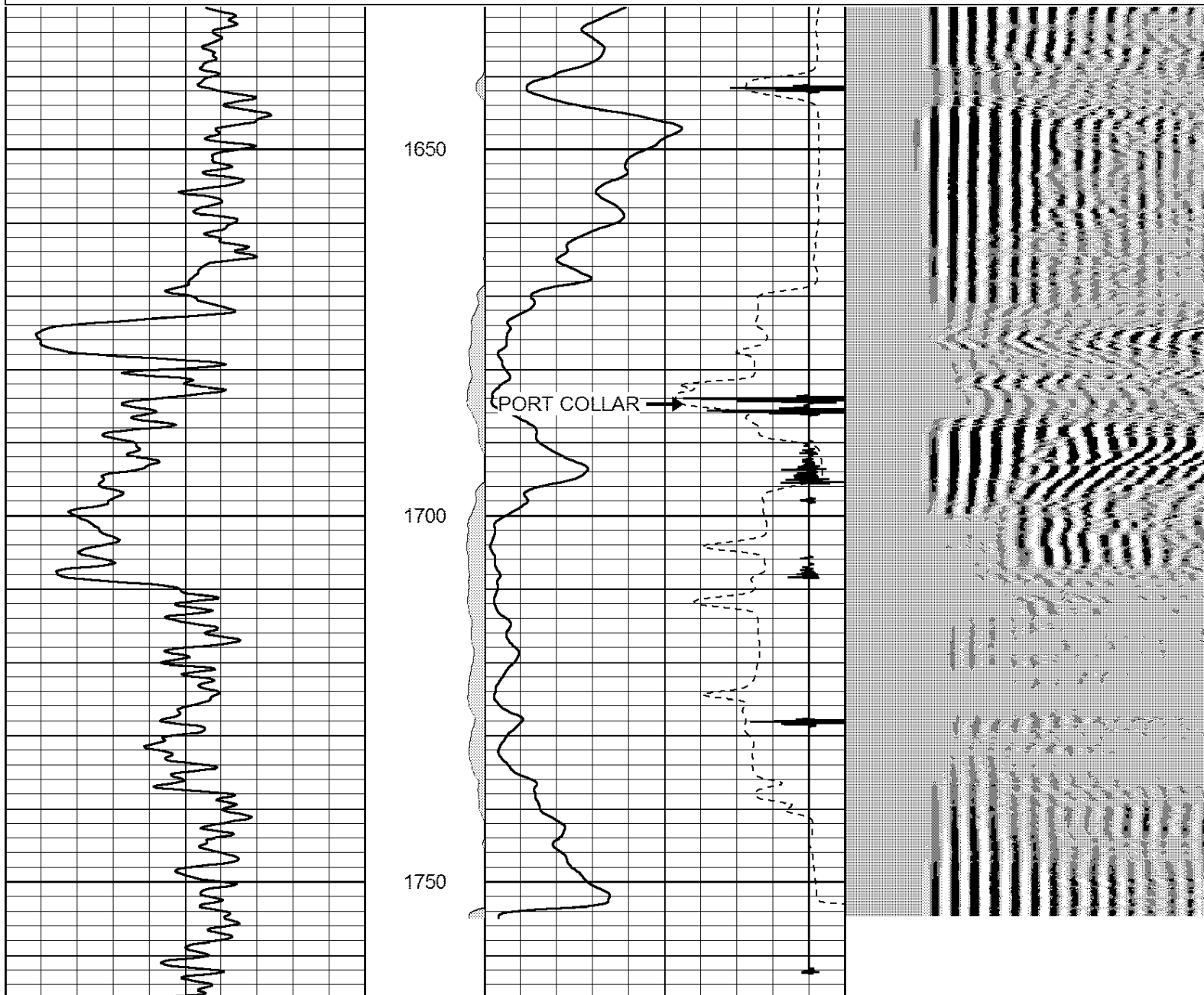
**Comments**

THANK YOU FOR USING  
PERF-TECH WIRELINE SERVICES, INC.  
785-628-3969

DIRECTIONS: NESS CITY, Ks.  
6 WEST to L Rd, 2 NORTH,  
WEST into, top of hill

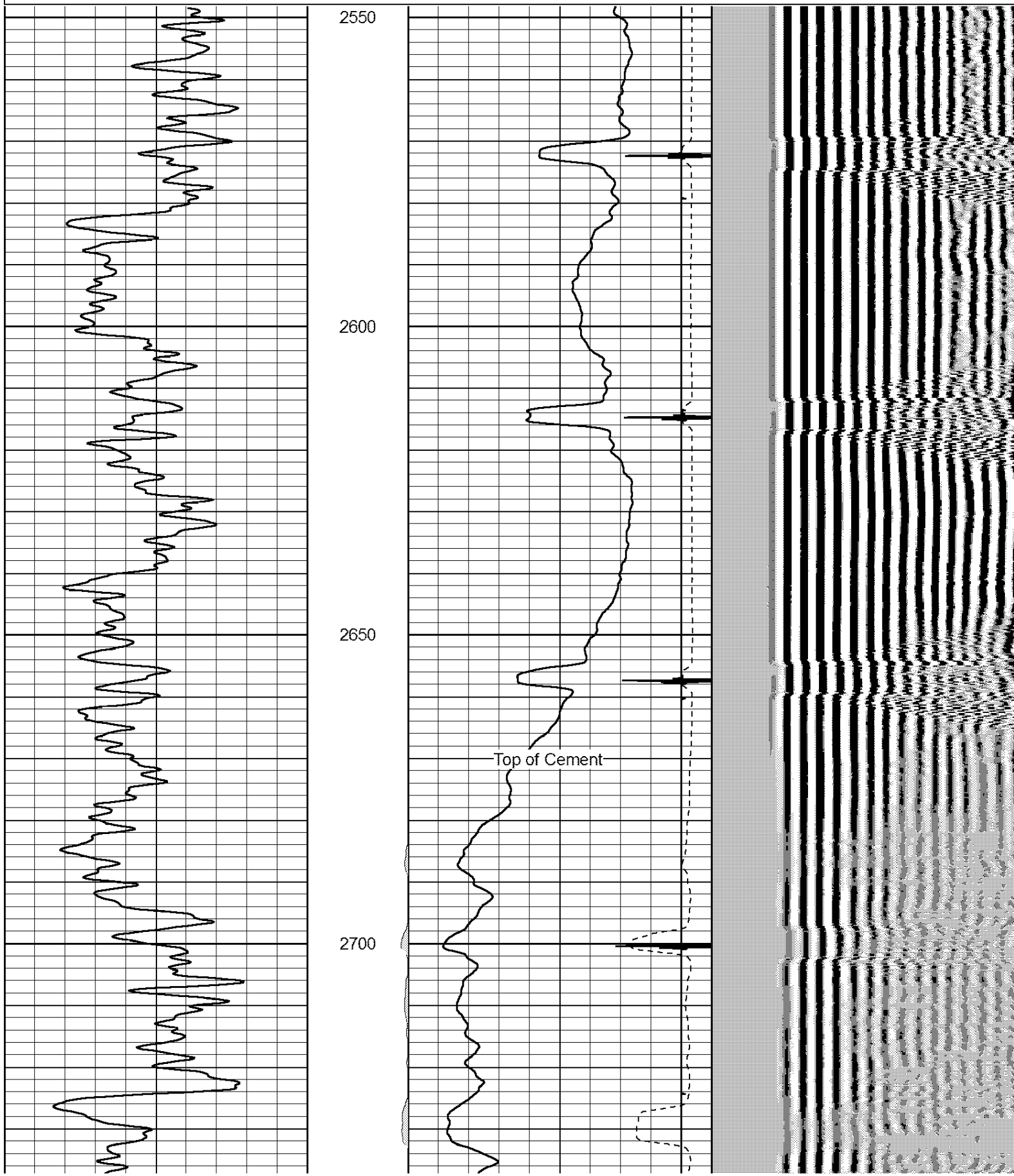
Database File: aug232109.db  
 Dataset Pathname: pass4  
 Presentation Format: 3x5  
 Dataset Creation: Mon Aug 23 09:09:39 2021 by Log Std Casedhole 06040  
 Charted by: Depth in Feet scaled 1:240

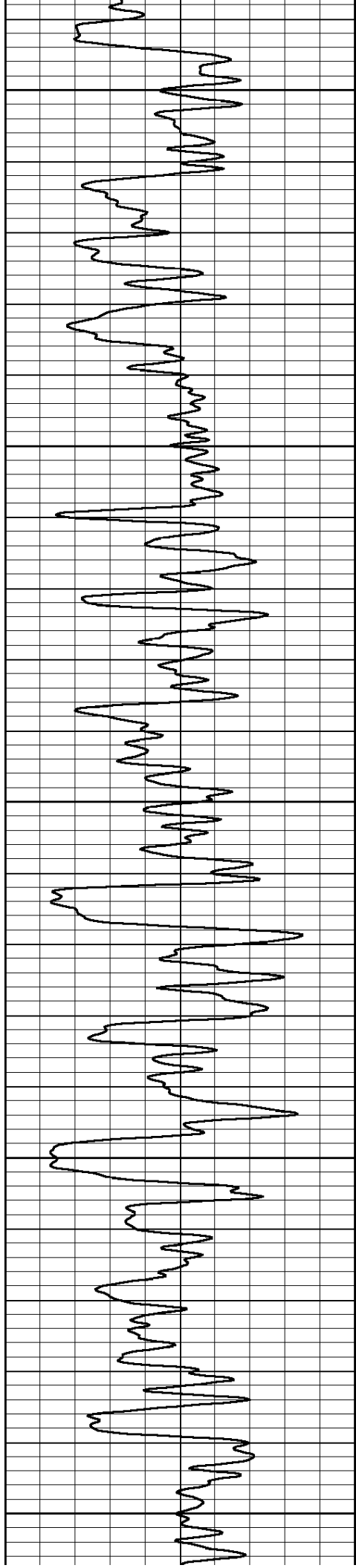
0	Gamma Ray (GAPI)	150	0	3' AMPLITUDE (mV)	100	200	5' Variable Density	1100
			475	3' TRAVEL TIME (usec)	235			
			9	Collar Locator	-1			



0	Gamma Ray (GAPI)	150	0	3' AMPLITUDE (mV)	100	200	5' Variable Density	1100
			475	3' TRAVEL TIME (usec)	235			
			9	Collar Locator	-1			

0	Gamma Ray (GAPI)	150	0	3' AMPLITUDE (mV)	100	200	5' Variable Density	1100
			475	3' TRAVEL TIME (usec)	235			
			9	Collar Locator	-1			





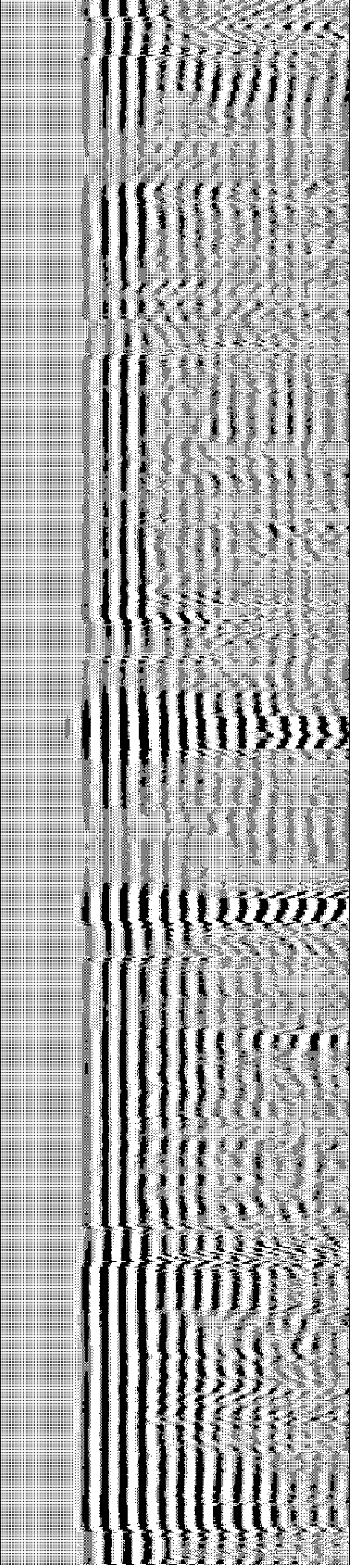
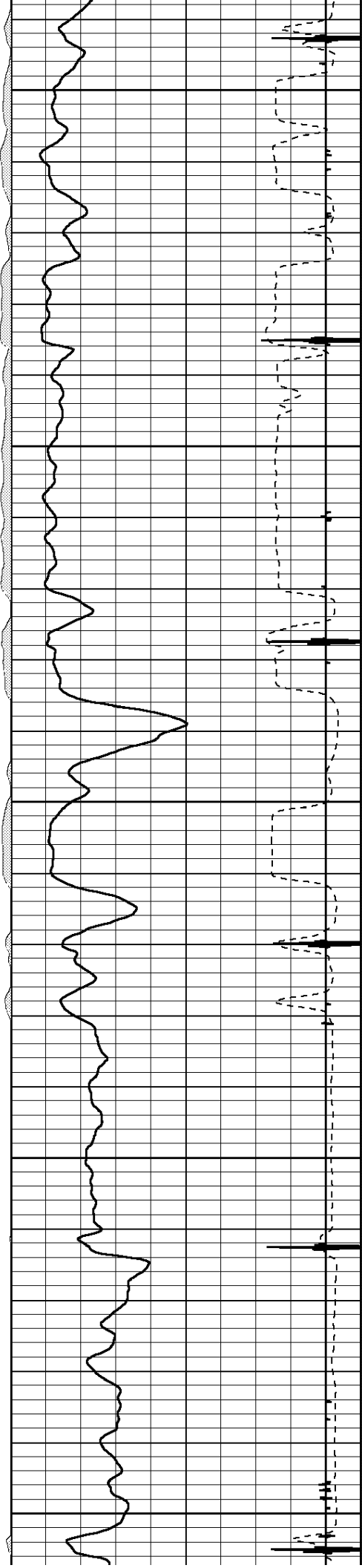
2750

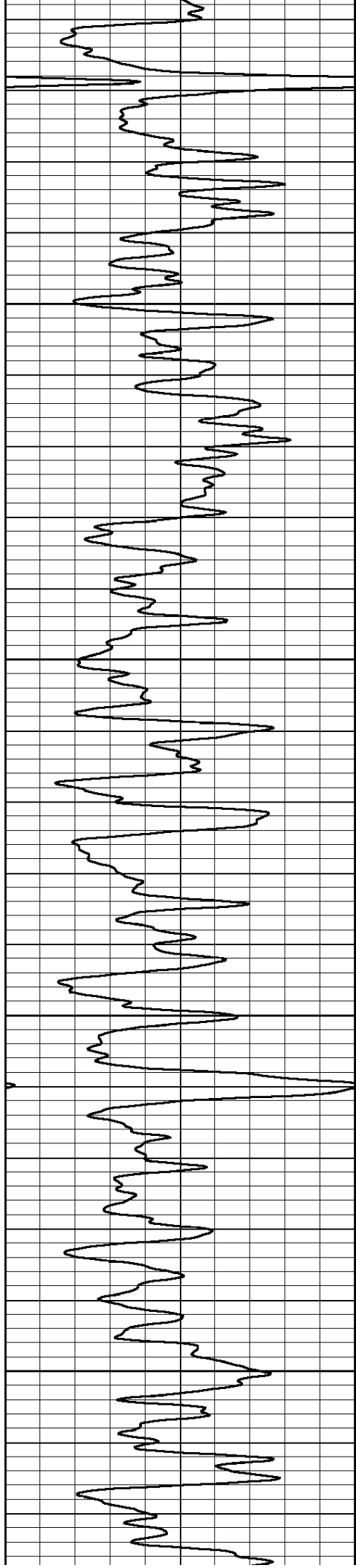
2800

2850

2900

2950



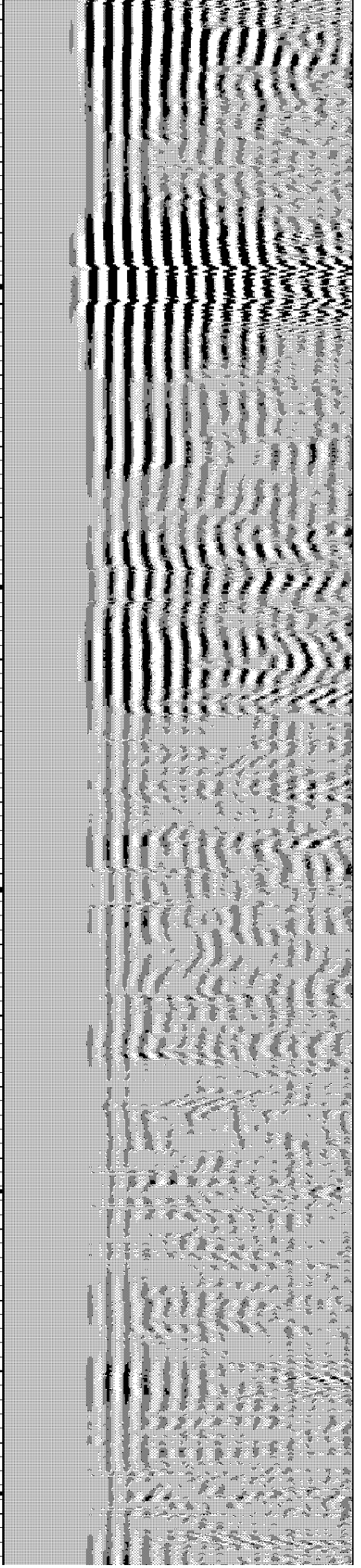
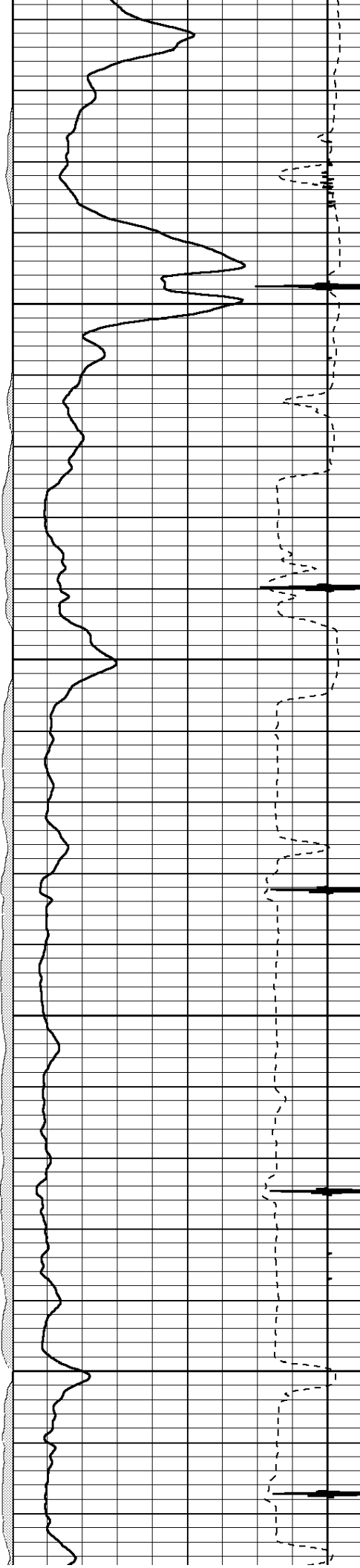


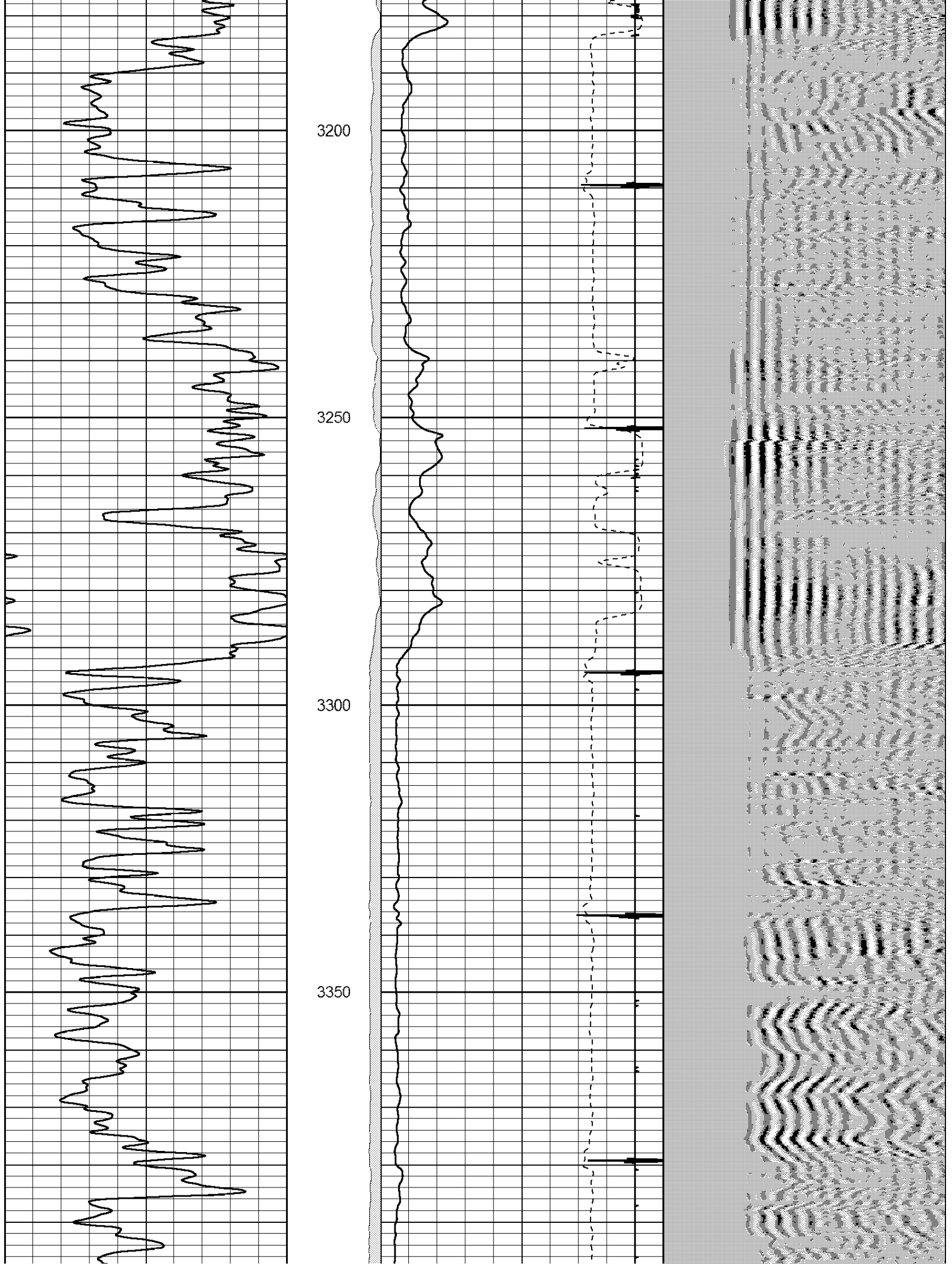
3000

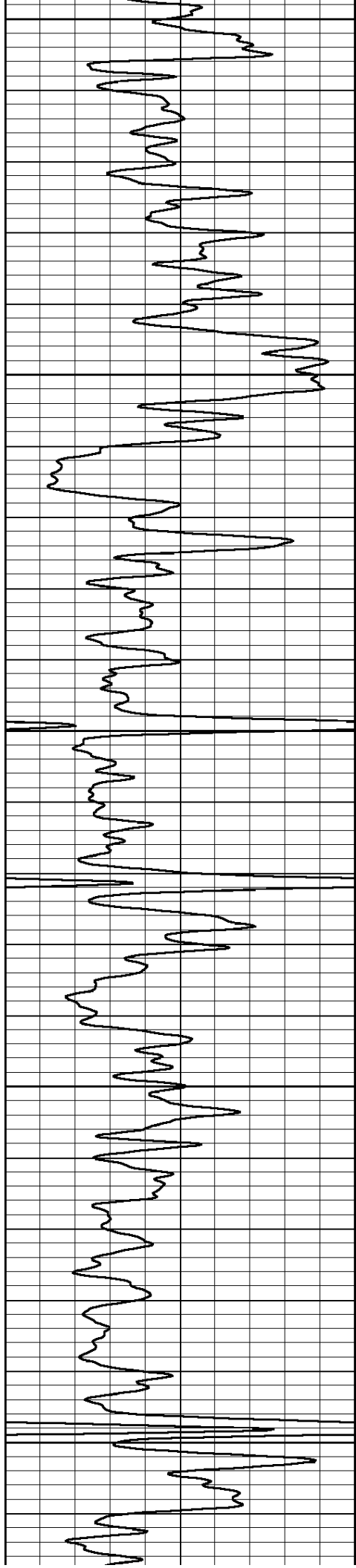
3050

3100

3150







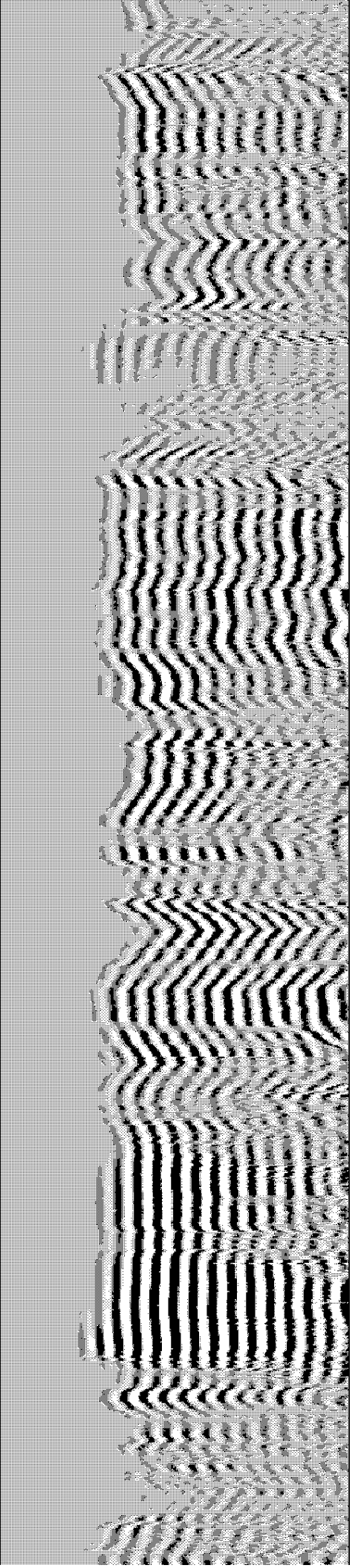
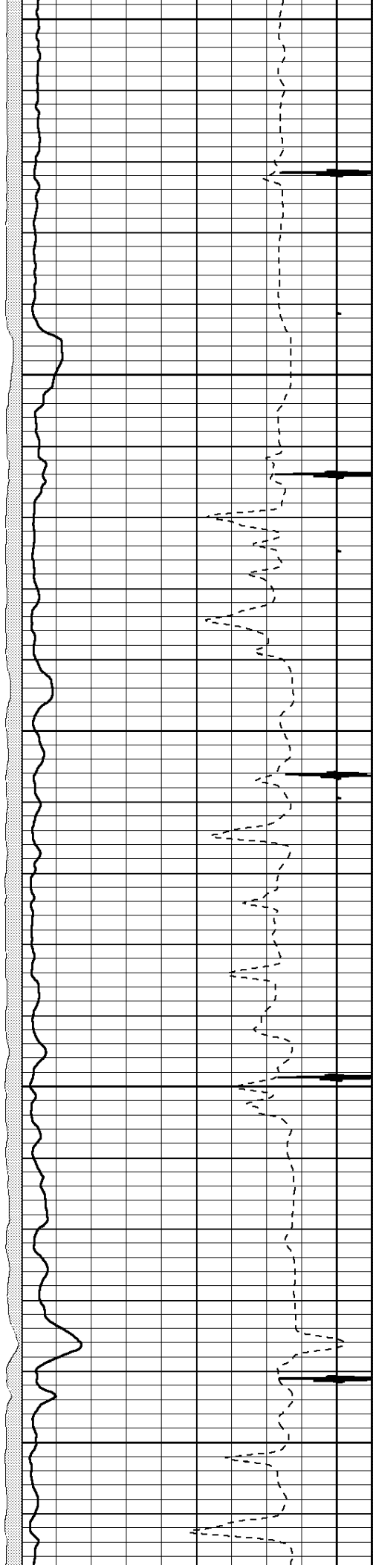
3400

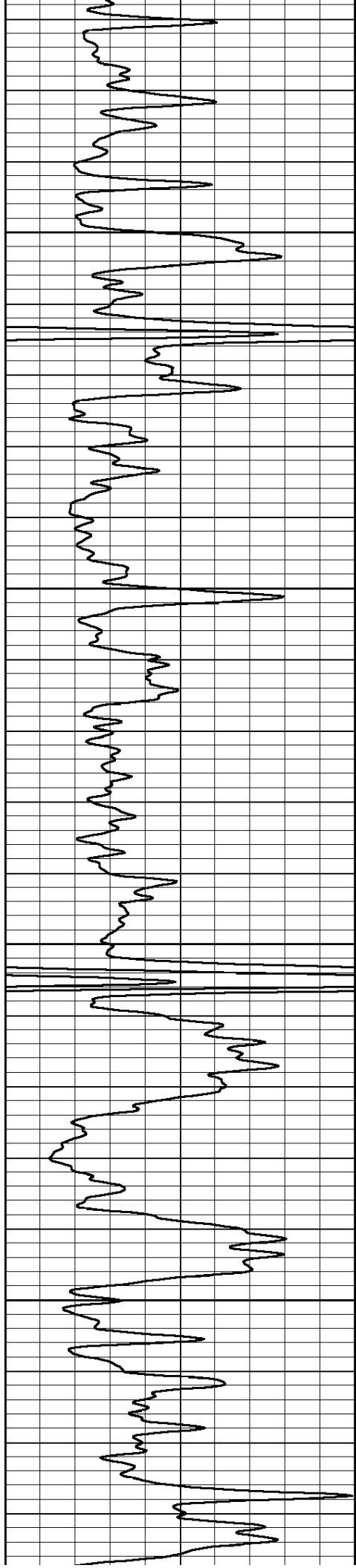
3450

3500

3550

3600



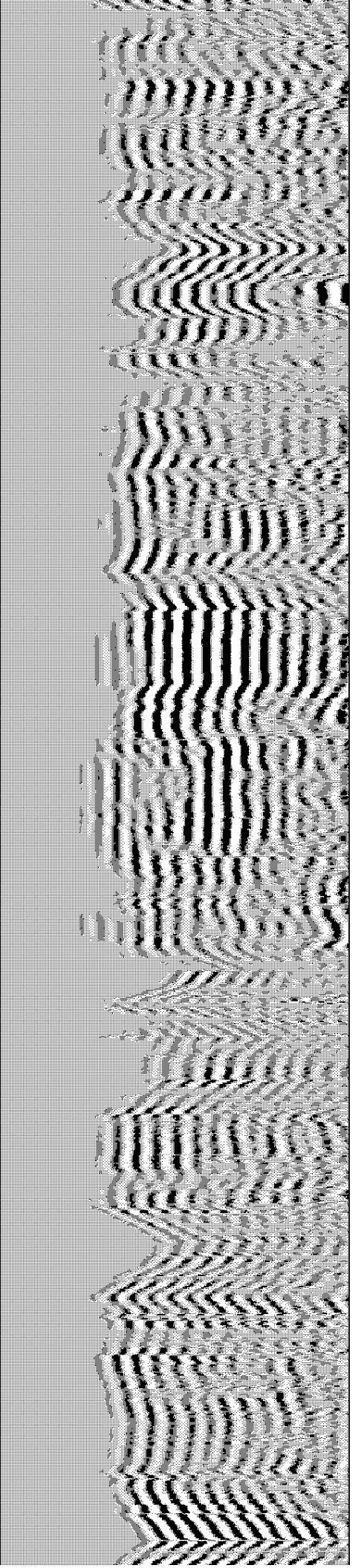
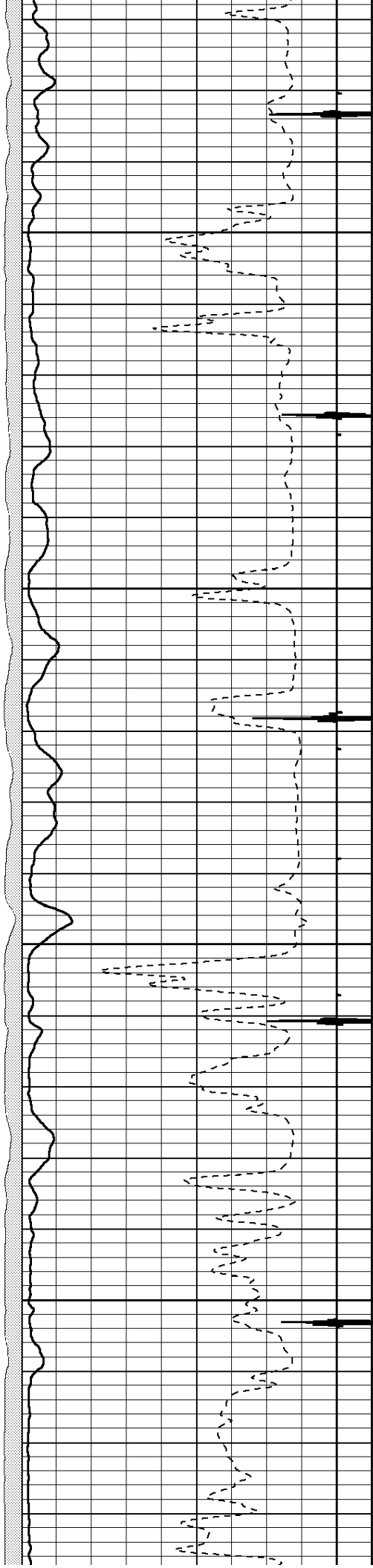


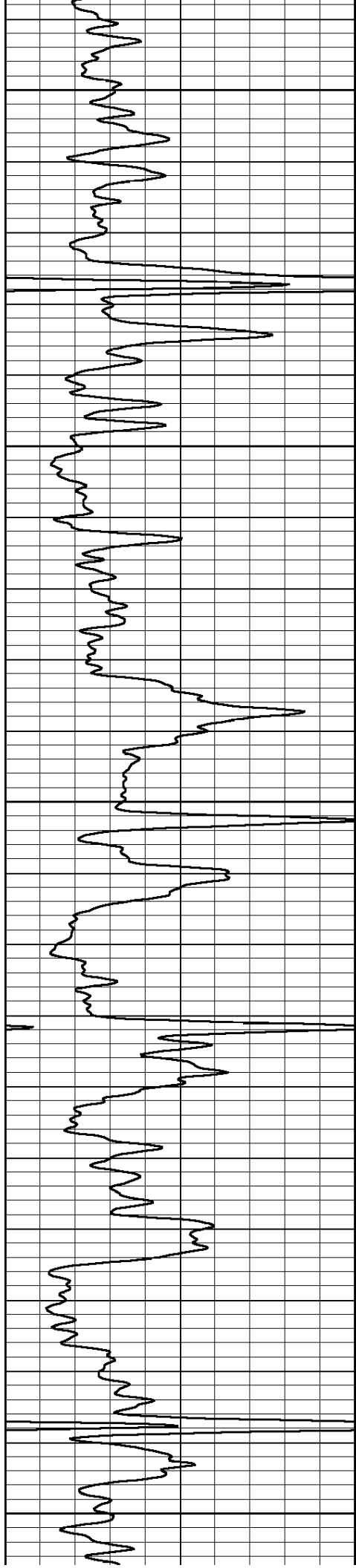
3650

3700

3750

3800





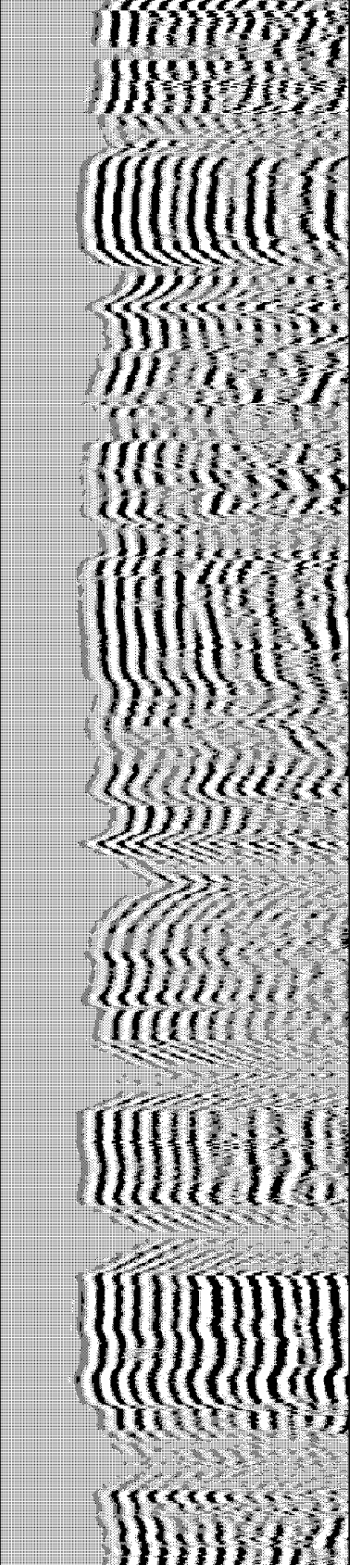
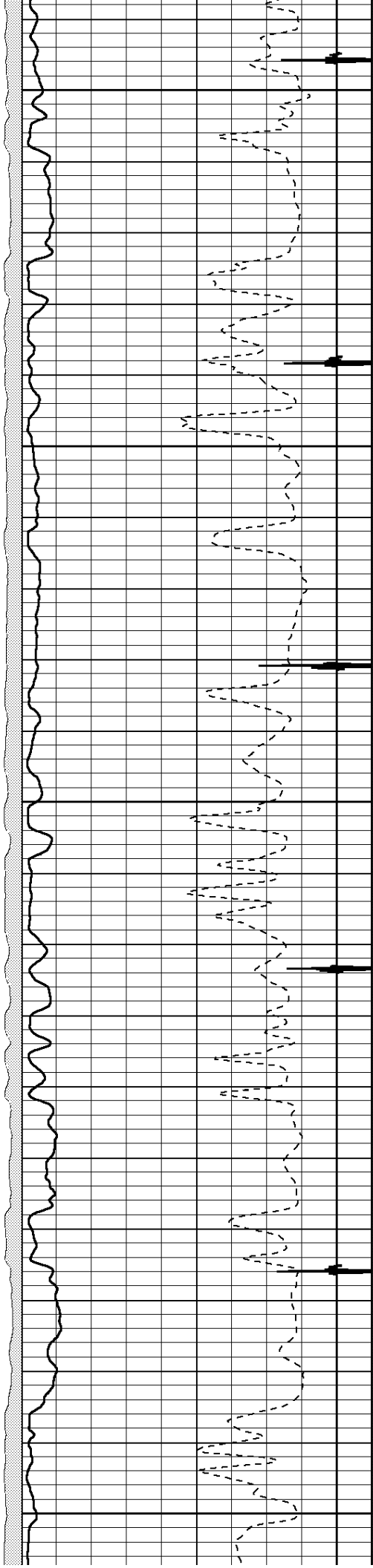
3850

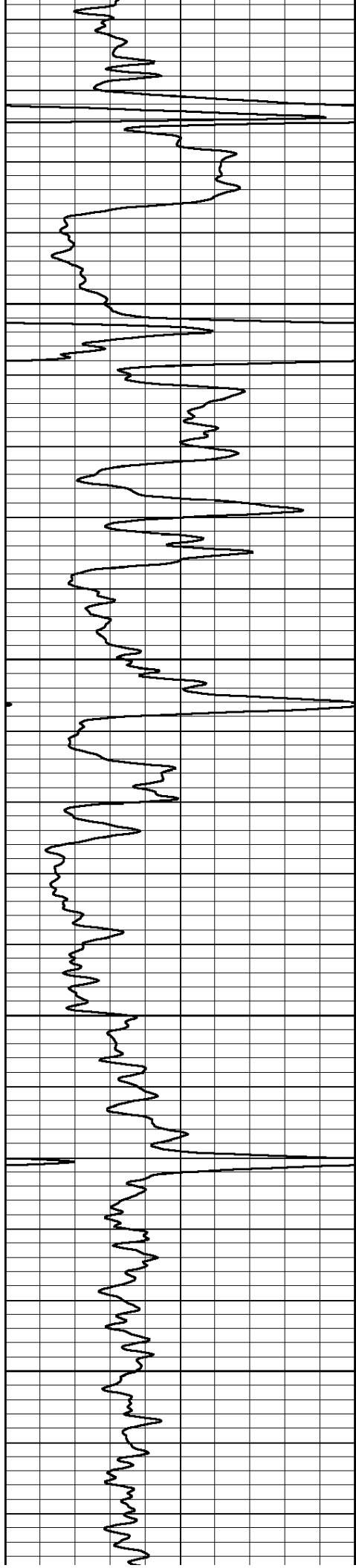
3900

3950

4000

4050



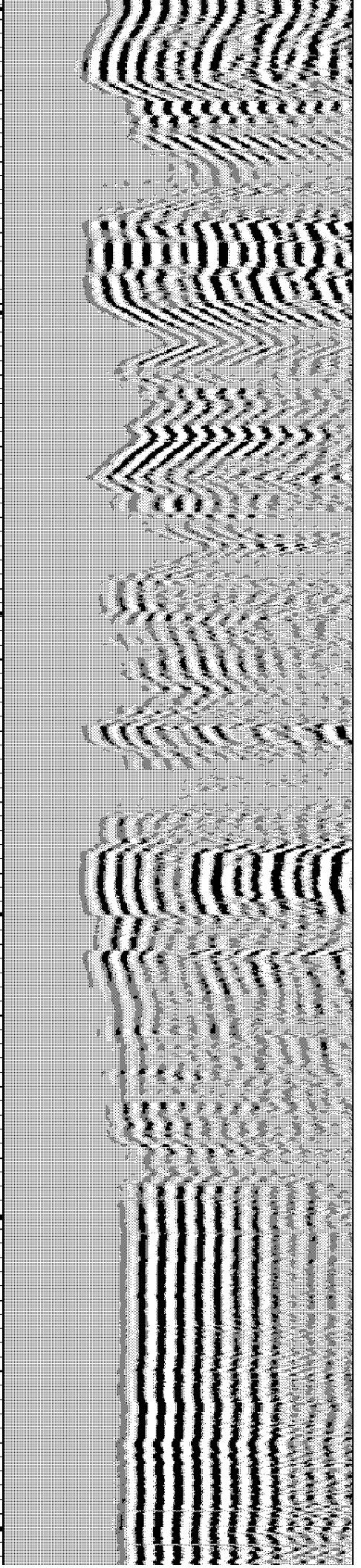
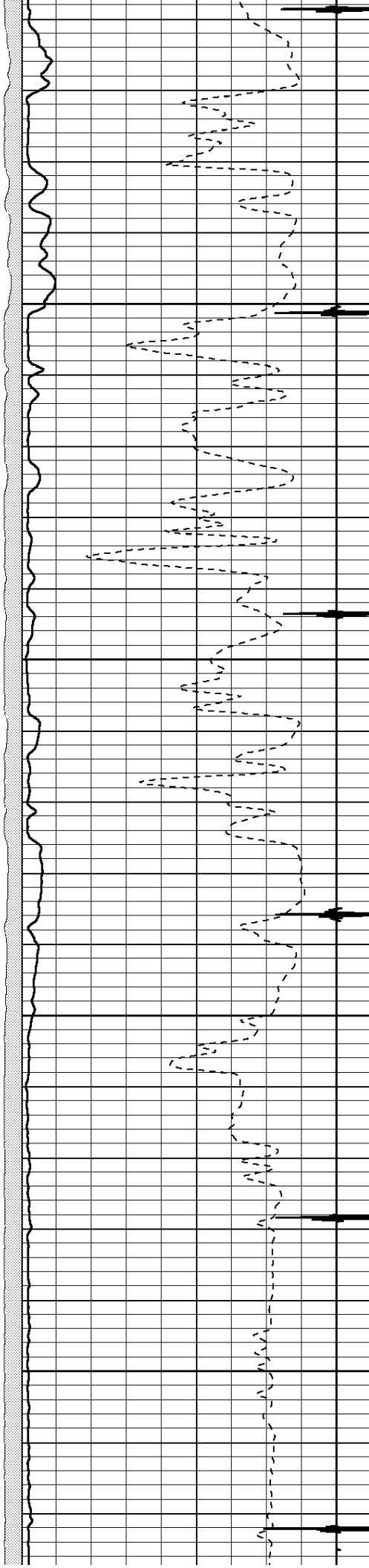


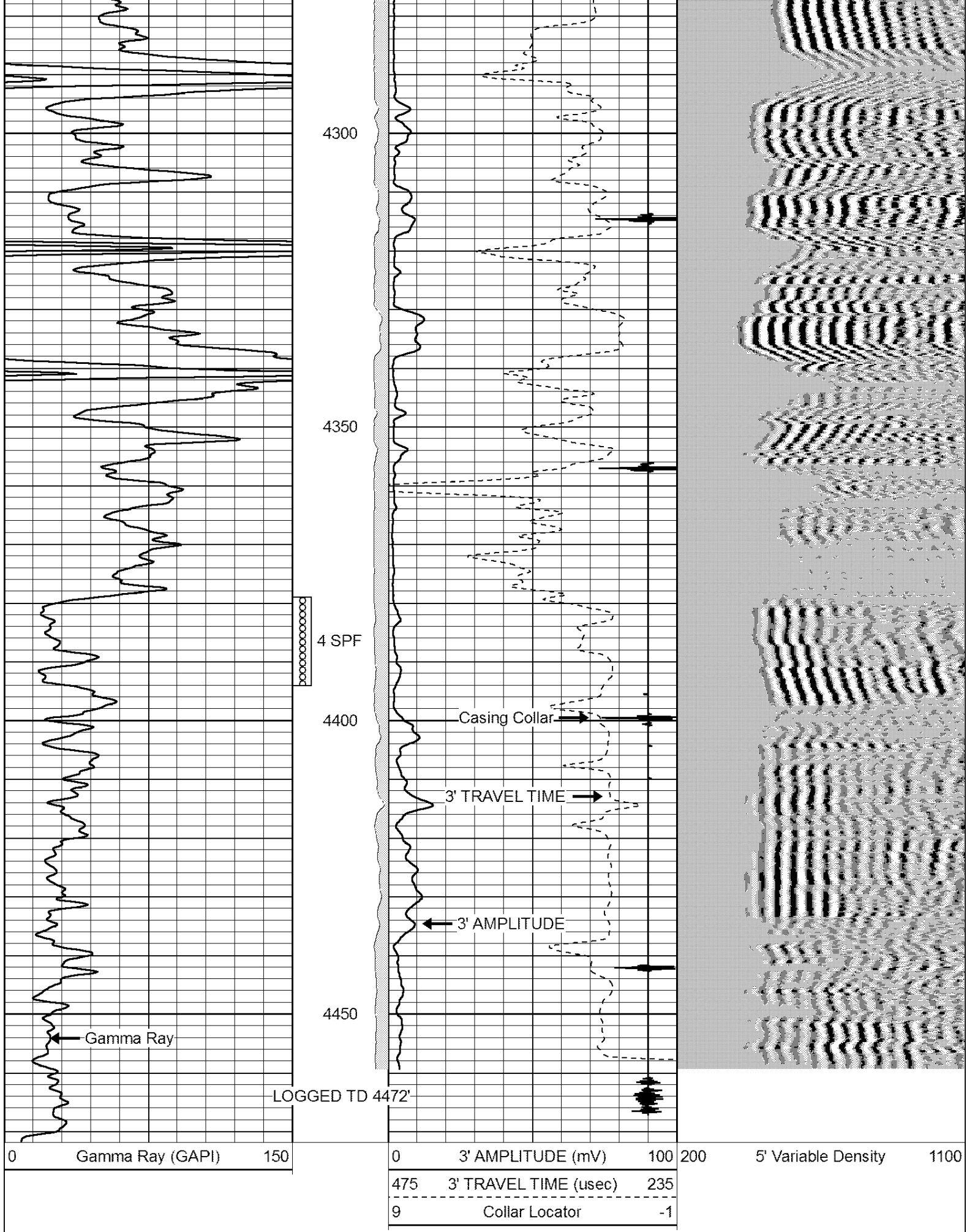
4100

4150

4200

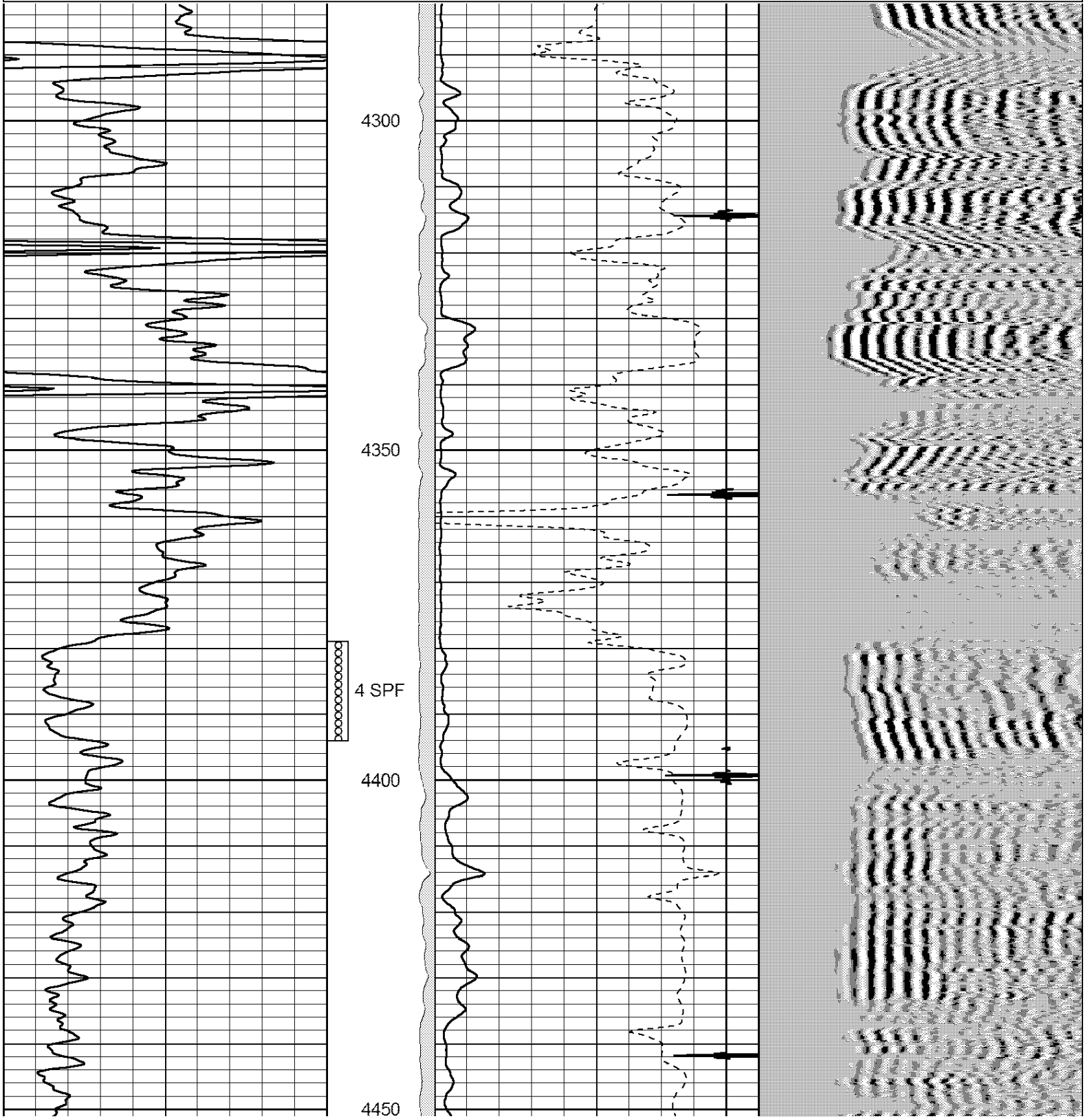
4250

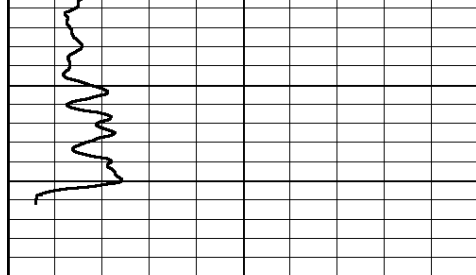




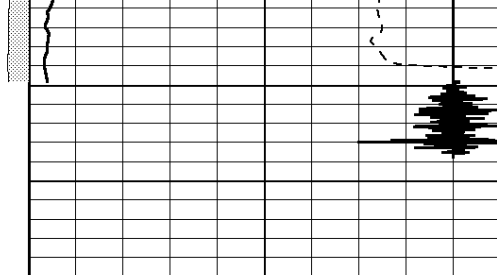
Database File: aug232109.db  
 Dataset Pathname: pass2  
 Presentation Format: 3x5  
 Dataset Creation: Mon Aug 23 08:26:50 2021 by Log Std Casedhole 06040  
 Charted by: Depth in Feet scaled 1:240

0	Gamma Ray (GAPI)	150	0	3' AMPLITUDE (mV)	100	200	5' Variable Density	1100
			475	3' TRAVEL TIME (usec)	235			
			9	Collar Locator	-1			

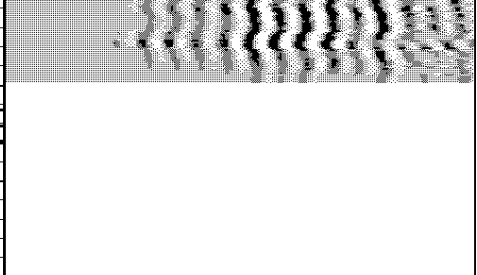




0      Gamma Ray (GAPI)      150



0      3' AMPLITUDE (mV)      100



200      5' Variable Density      1100

0

475      3' TRAVEL TIME (usec)      235

9

0

9      Collar Locator      -1

0