

MICRO LOG

Company PALOMINO PETROLEUM, INC.

Well DINGES TRUST #4

Field DEX SOUTHWEST

County NESS State KANSAS

Location: API #: 15-135-26110-0000

1002' FSL & 1301' FEL

SEC 14 TWP 18S RGE 25W

Permanent Datum GROUND LEVEL Elevation 2410

Log Measured From KELLY BUSHING 5' A.G.L

Drilling Measured From KELLY BUSHING

Other Services CDL/CNL DIL

Elevation

K.B. 2415  
D.F. 2413  
G.L. 2410

Date 8/12/21

Run Number TWO

Depth Driller 4510

Depth Logger 4514

Bottom Logged Interval 4512

Top Log Interval 3400

Casing Driller 8 5/8" @ 218

Casing Logger 218

Bit Size 7 7/8

Type Fluid in Hole CHEMICAL MUD

Density / Viscosity 9.0/52

pH / Fluid Loss 10.0/8.8

Source of Sample FLOWLINE

Rm @ Meas. Temp .95 @ 80F

Rmf @ Meas. Temp .71 @ 80F

Rmc @ Meas. Temp 1.14 @ 80F

Source of Rmf / Rmc MEASUREMENT

Rm @ BHT .63 @ 120F

Time Circulation Stopped 2 HOURS

Time Logger on Bottom ////

Maximum Recorded Temperature 120F

Equipment Number 3802

Location HAYS, KANSAS

Recorded By JASON CAPPELLUCCI

Witnessed By RYAN SEIB

<<< Fold Here >>>

All interpretations are opinions based on inferences from electrical or other measurements and we cannot and do not guarantee the accuracy or correctness of any interpretation, and we shall not, except in the case of gross or willful negligence on our part, be liable or responsible for any loss, costs, damages, or expenses incurred or sustained by anyone resulting from any interpretation made by any of our officers, agents or employees. These interpretations are also subject to our general terms and conditions set out in our current Price Schedule.

Comments

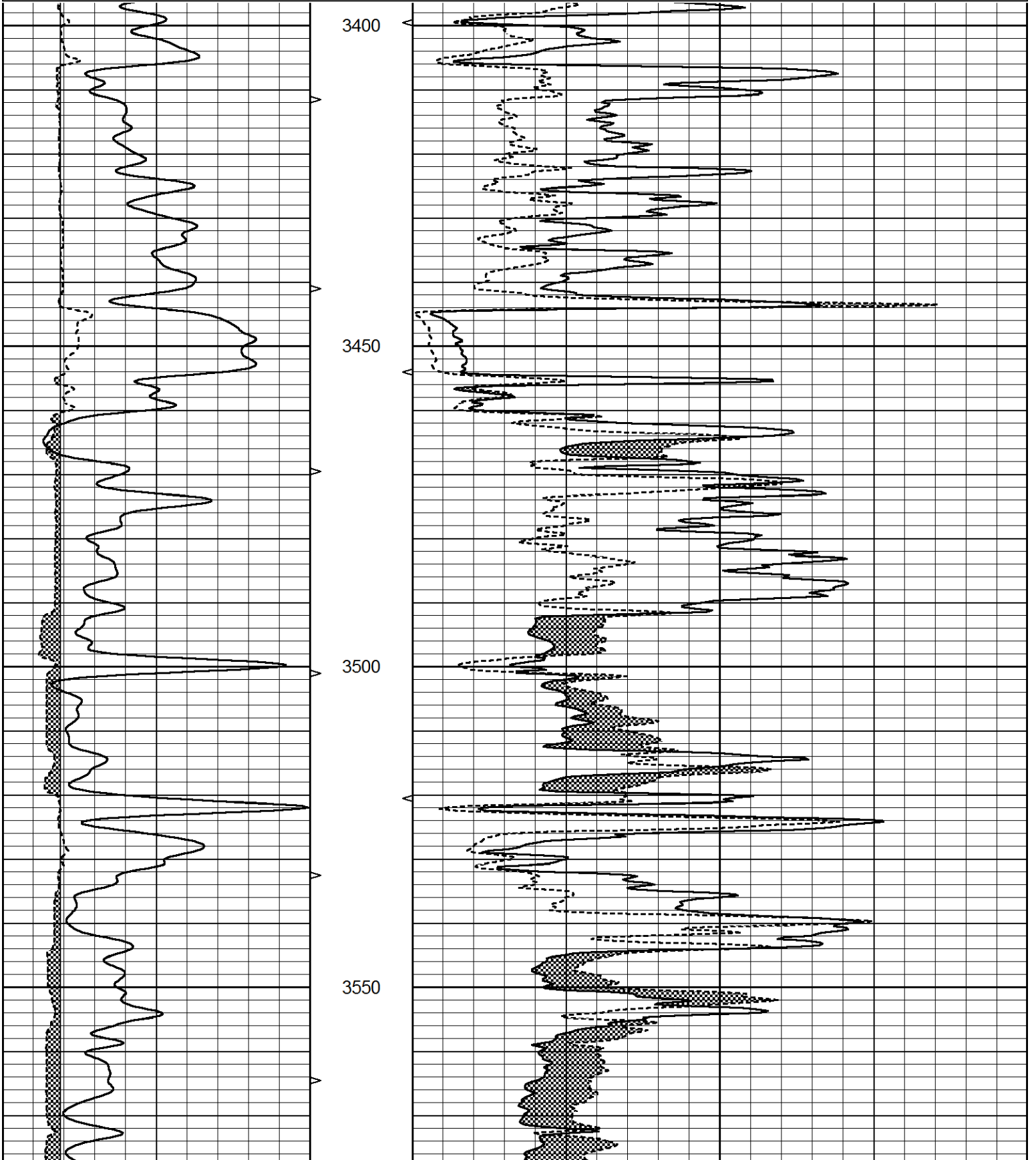
THANK YOU FOR USING ELI WIRELINE SERVICES, HAYS, KS. ( 785 ) 628-6395  
DIRECTIONS  
NESS CITY, KS. - 4 WEST TO RD. N - NORTH TO RD. 160 - WEST TO THE T  
1 SOUTH - 1 MILE WEST INTO

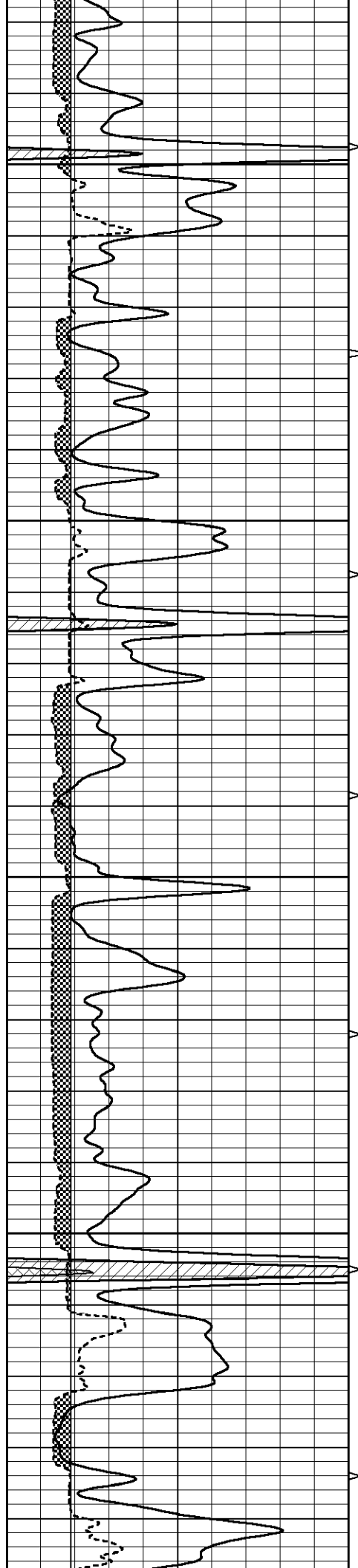


MAIN SECTION

Database File 5641ddn.db  
 Dataset Pathname pass6.1  
 Presentation Format \_micro  
 Dataset Creation Thu Aug 12 14:11:20 2021  
 Charted by Depth in Feet scaled 1:240

0	GAMMA RAY (GAPI)	150	ABHV	0	MEL1.5 (Ohm-m)	40
6	CALIPER (in)	16	10 (ft3)	0	MEL2.0 (Ohm-m)	40
			TBHV			
			0 (ft3)	10		



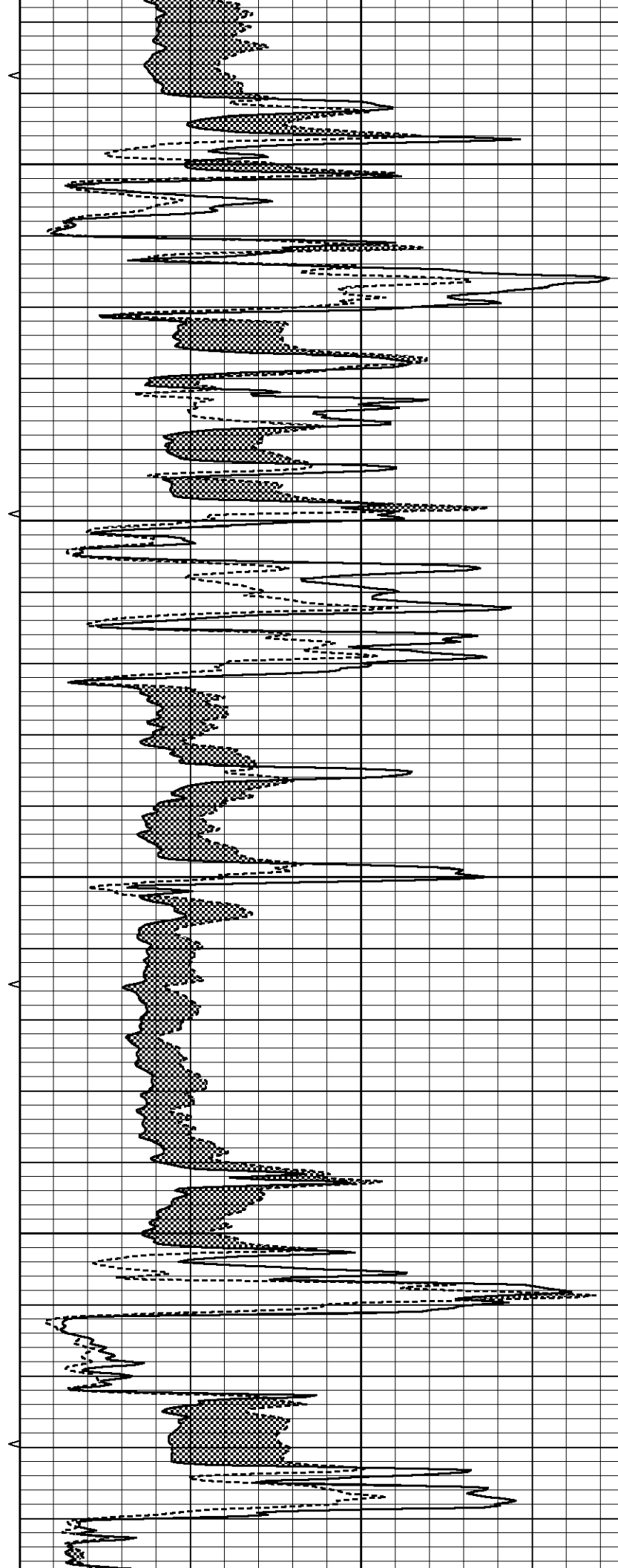


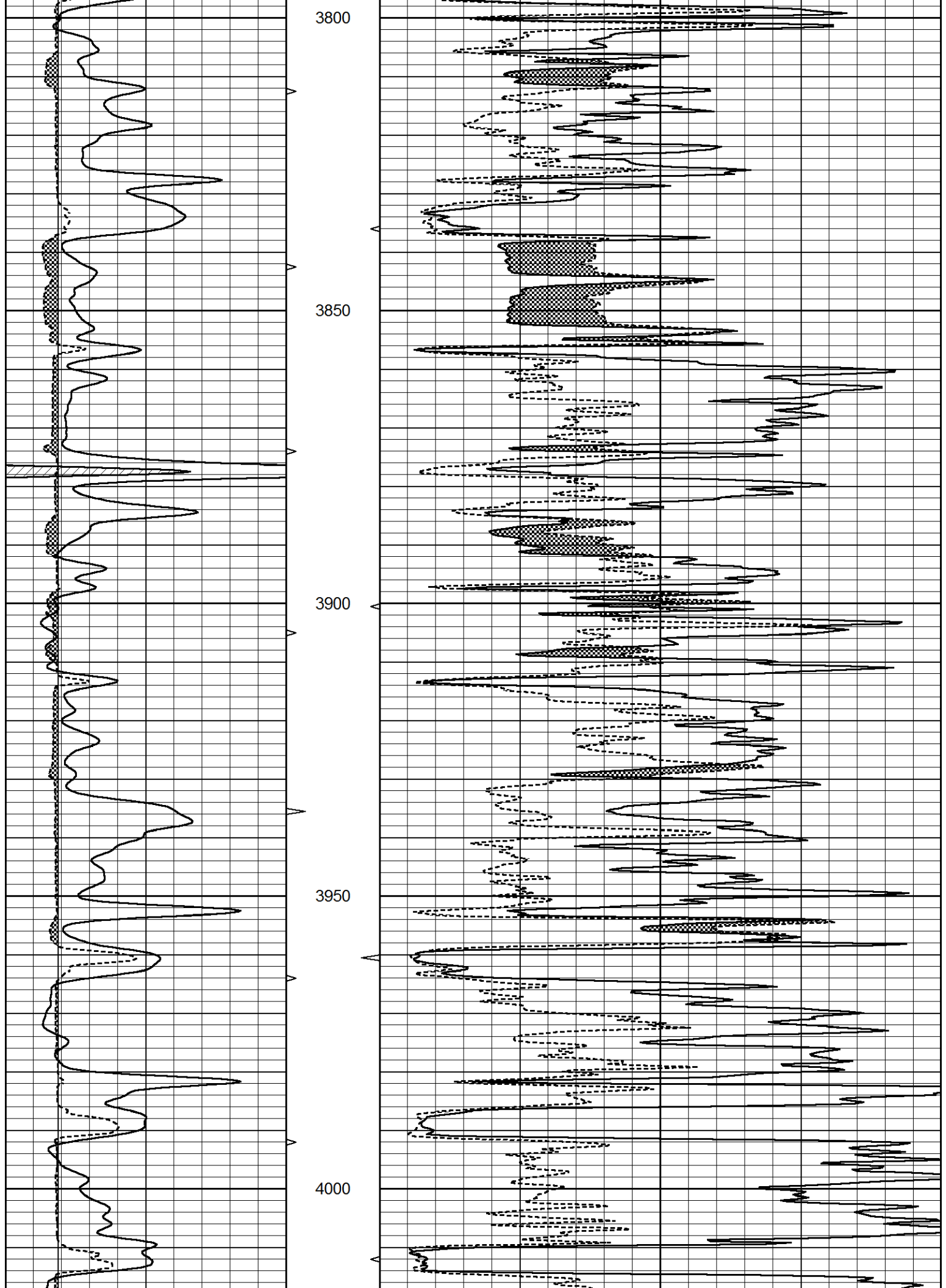
3600

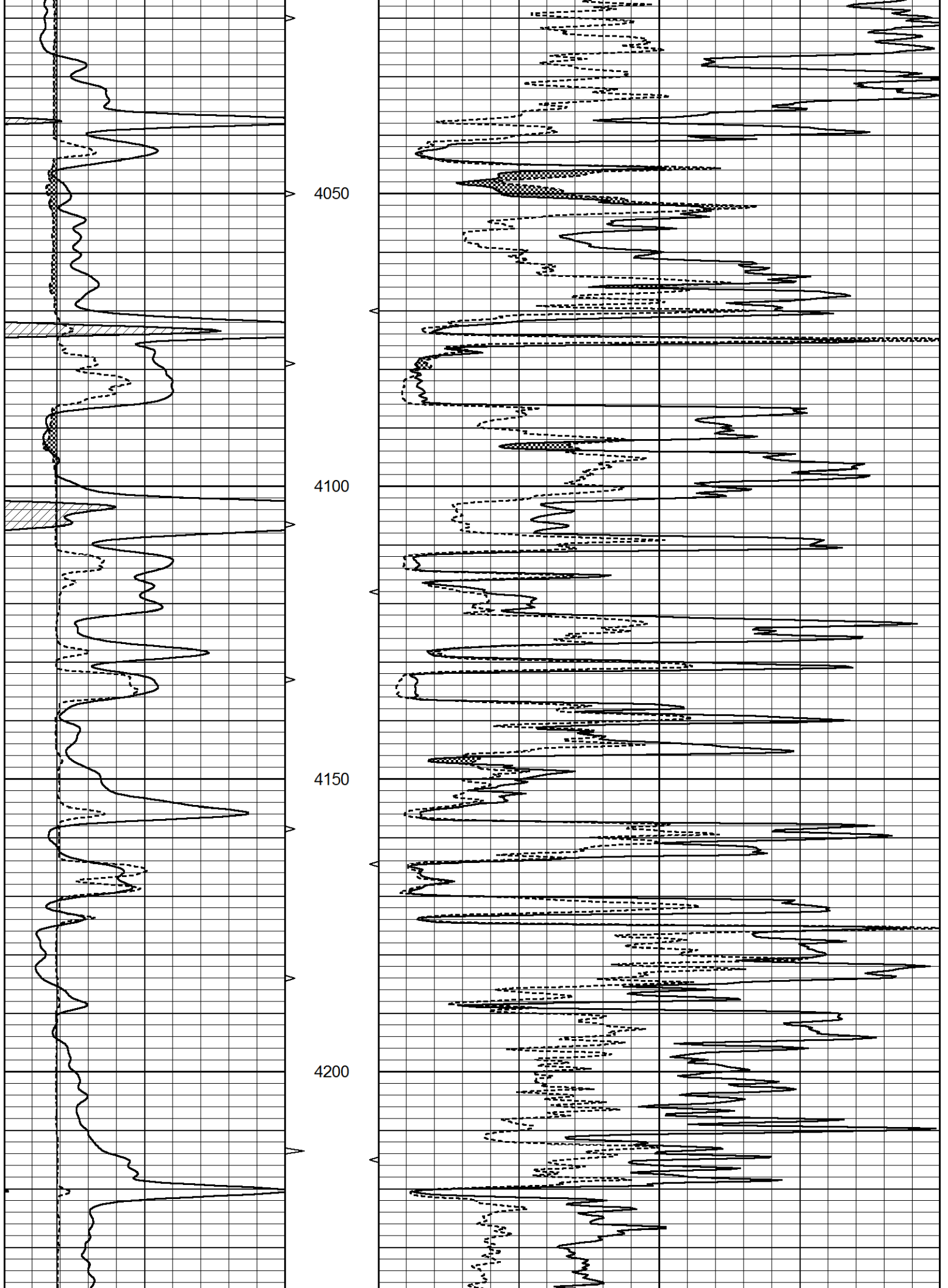
3650

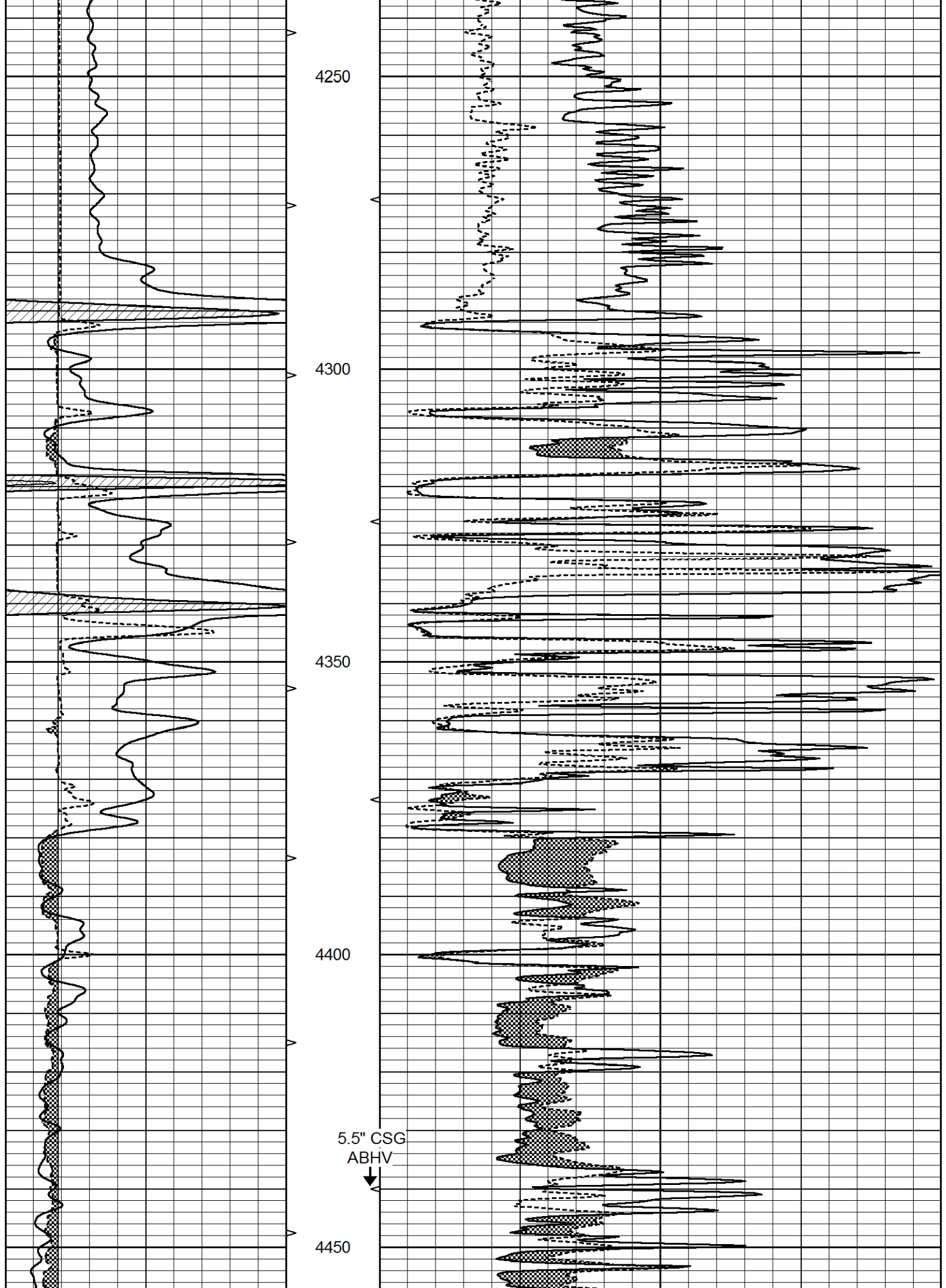
3700

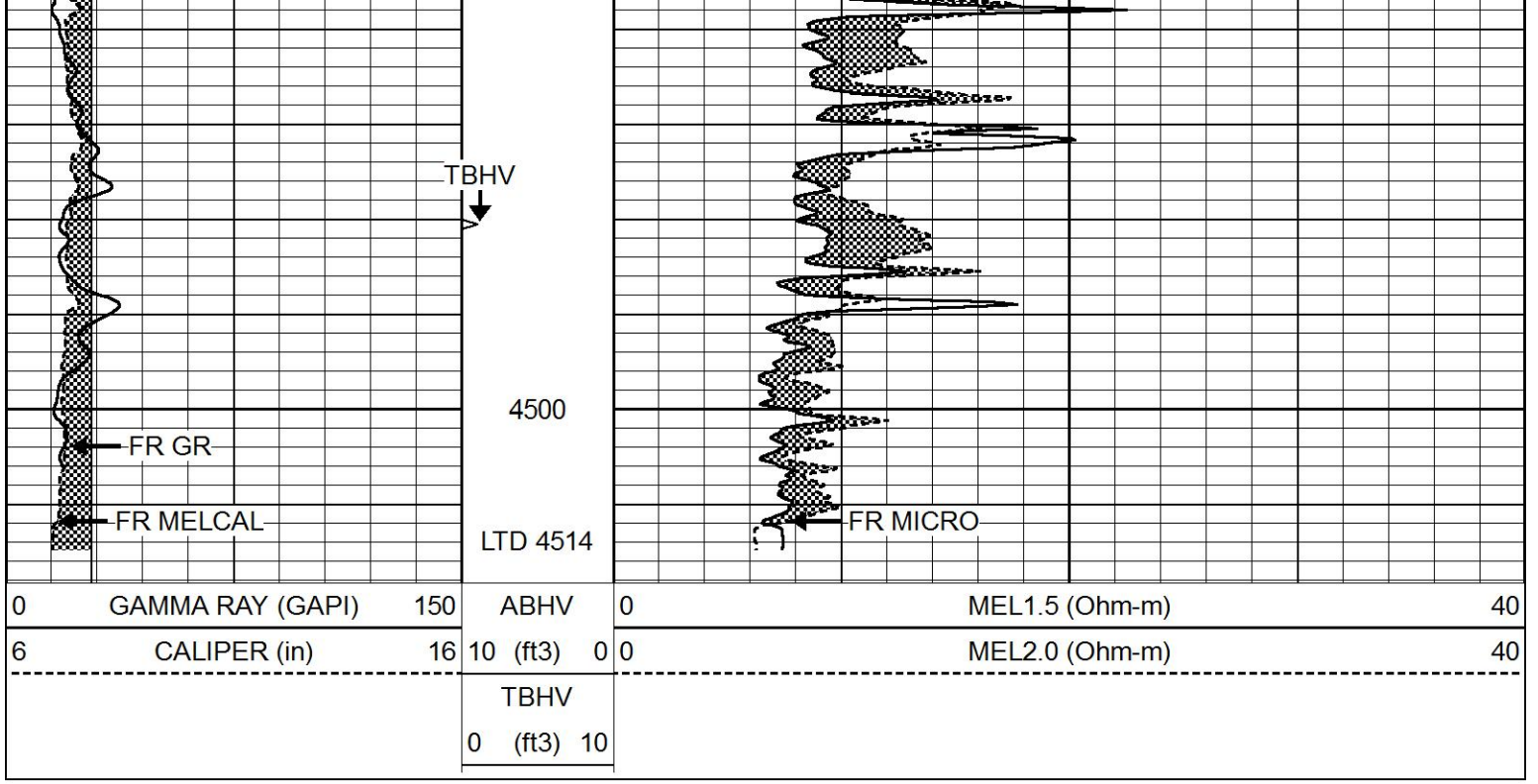
3750







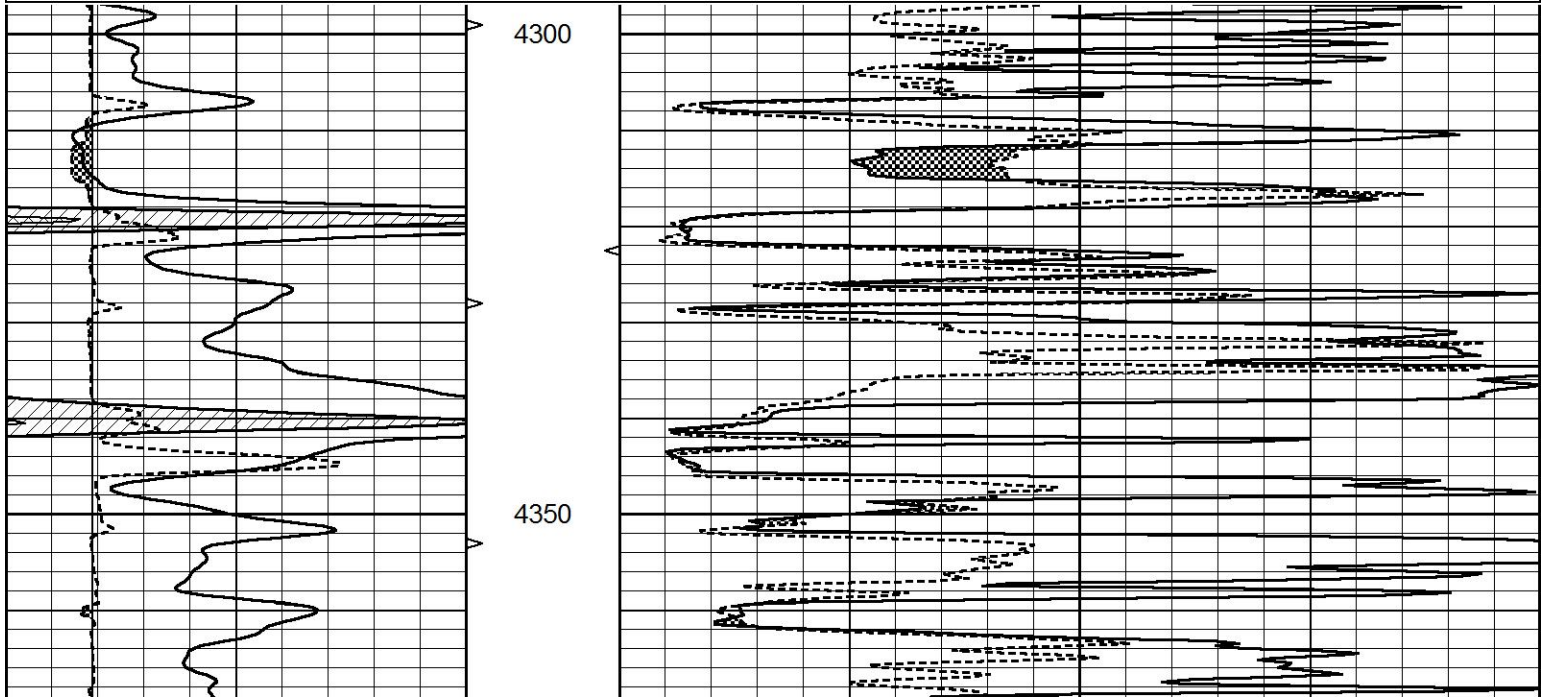


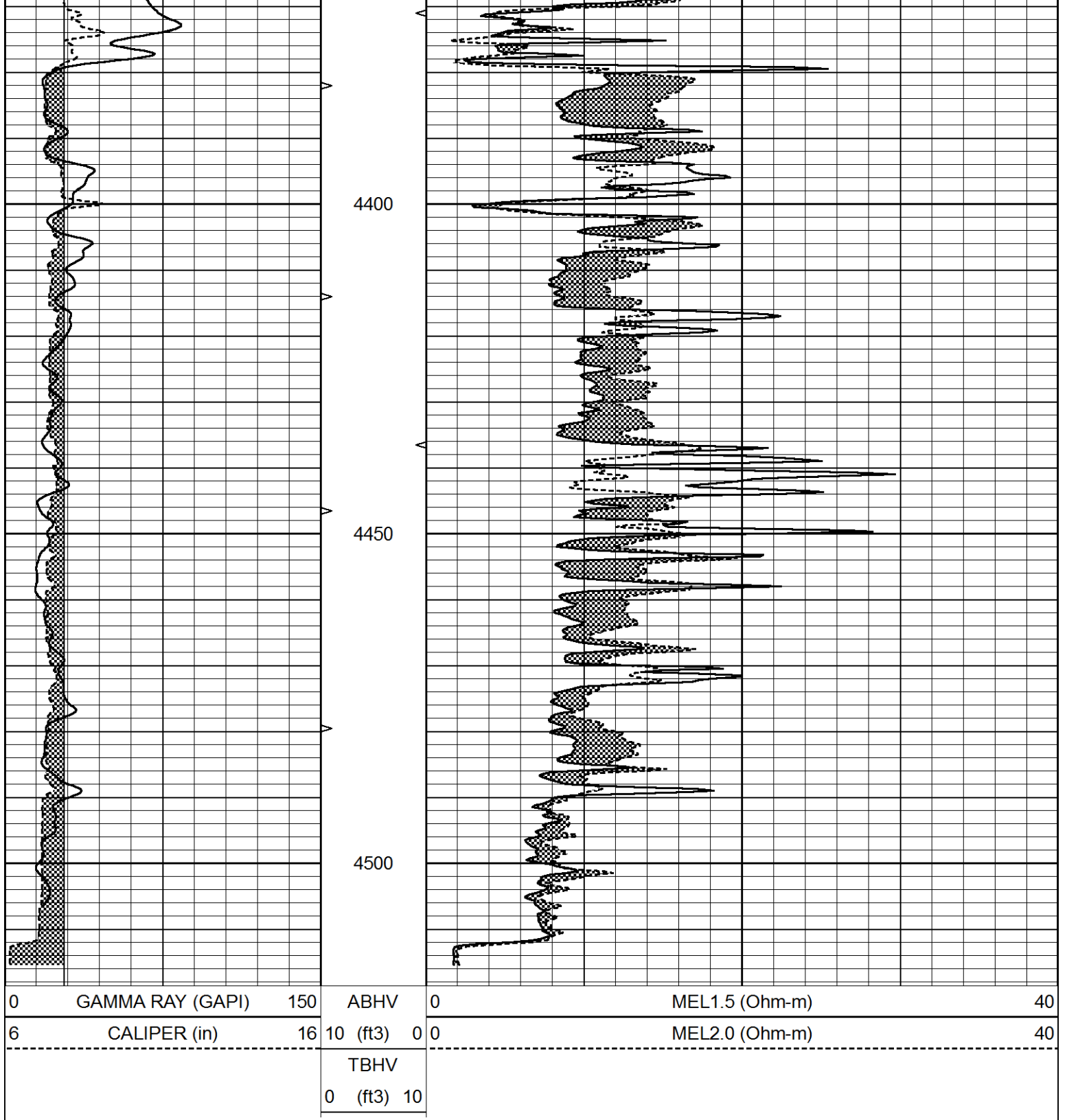


# REPEAT SECTION

Database File 5641ddn.db  
 Dataset Pathname pass5.1  
 Presentation Format \_micro  
 Dataset Creation Thu Aug 12 13:54:03 2021  
 Charted by Depth in Feet scaled 1:240

0	GAMMA RAY (GAPI)	150	ABHV	0	MEL1.5 (Ohm-m)	40
6	CALIPER (in)	16	10 (ft3) 0	0	MEL2.0 (Ohm-m)	40
			TBHV			
			0 (ft3) 10			





### Calibration Report

Database File 5641ddn.db  
 Dataset Pathname pass5.1  
 Dataset Creation Thu Aug 12 13:54:03 2021

### MICRO\_USR Calibration Report

Serial Number: 070910  
 Tool Model: Probel  
 Performed: Thu Jun 10 10:36:57 2021

Caliper Calibration: Gain=7.192 Offset=2.802

References	Low Cal 8.000	High Cal 14.000
Readings	0.723	1.557
1.5" Calibration:	Gain=50.000	Offset=-0.567
References	Low Cal 0.000	High Cal 20.000
Readings	0.004	1.335
2" Calibration:	Gain=85.000	Offset=-2.400
References	Low Cal 0.000	High Cal 20.000
Readings	0.004	1.029

Microlog Calibration Report

Serial-Model: 070910-ProbeL  
 Performed: (Not Performed)

	Readings			References			Results	
	Zero	Cal		Zero	Cal		m	b
Normal	0.0000	1.0000	V	0.0000	1.0000	Ohm-m	1.0000	0.0000
Inverse	0.0000	1.0000	V	0.0000	1.0000	Ohm-m	1.0000	0.0000
Caliper	0.0000	1.0000	V	0.0000	1.0000	in	1.0000	0.0000

Gamma Ray Calibration Report

Serial Number: 070558  
 Tool Model: Probe1  
 Performed: Fri Oct 30 21:32:56 2020

Calibrator Value: 1.0 GAPI

Background Reading: 0.0 cps  
 Calibrator Reading: 1.0 cps

Sensitivity: 0.2700 GAPI/cps