



DUAL
INDUCTION
LOG

Company PALOMINO PETROLEUM, INC.

Well DINGES TRUST #4

Field DEX SOUTHWEST

County NESS State KANSAS

Location: API #: 15-135-26110-0000

1002' FSL & 1301' FEL

SEC 14 TWP 18S RGE 25W

Permanent Datum GROUND LEVEL Elevation 2410

Log Measured From KELLY BUSHING 5' A.G.L

Drilling Measured From KELLY BUSHING

Other Services
CDL/CNL
MEL

Elevation

K.B. 2415
D.F. 2413
G.L. 2410

Date	8/12/21
Run Number	ONE
Depth Driller	4510
Depth Logger	4514
Bottom Logged Interval	4512
Top Log Interval	00
Casing Driller	8 5/8" @ 218
Casing Logger	218
Bit Size	7 7/8
Type Fluid in Hole	CHEMICAL MUD
Density / Viscosity	9.0/52
pH / Fluid Loss	10.0/8.8
Source of Sample	FLOWLINE
Rm @ Meas. Temp	.95 @ 80F
Rmf @ Meas. Temp	.71 @ 80F
Rmc @ Meas. Temp	1.14 @ 80F
Source of Rmf / Rmc	MEASUREMENT
Rm @ BHT	.63 @ 120F
Time Circulation Stopped	2 HOURS
Time Logger on Bottom	////
Maximum Recorded Temperature	120F
Equipment Number	3802
Location	HAYS, KANSAS
Recorded By	JASON CAPPELLUCCI
Witnessed By	RYAN SEIB

<<< Fold Here >>>

All interpretations are opinions based on inferences from electrical or other measurements and we cannot and do not guarantee the accuracy or correctness of any interpretation, and we shall not, except in the case of gross or willful negligence on our part, be liable or responsible for any loss, costs, damages, or expenses incurred or sustained by anyone resulting from any interpretation made by any of our officers, agents or employees. These interpretations are also subject to our general terms and conditions set out in our current Price Schedule.

Comments

THANK YOU FOR USING ELI WIRELINE SERVICES, HAYS, KS. (785) 628-6395
DIRECTIONS
NESS CITY, KS. - 4 WEST TO RD. N - NORTH TO RD. 160 - WEST TO THE T
1 SOUTH - 1 MILE WEST INTO

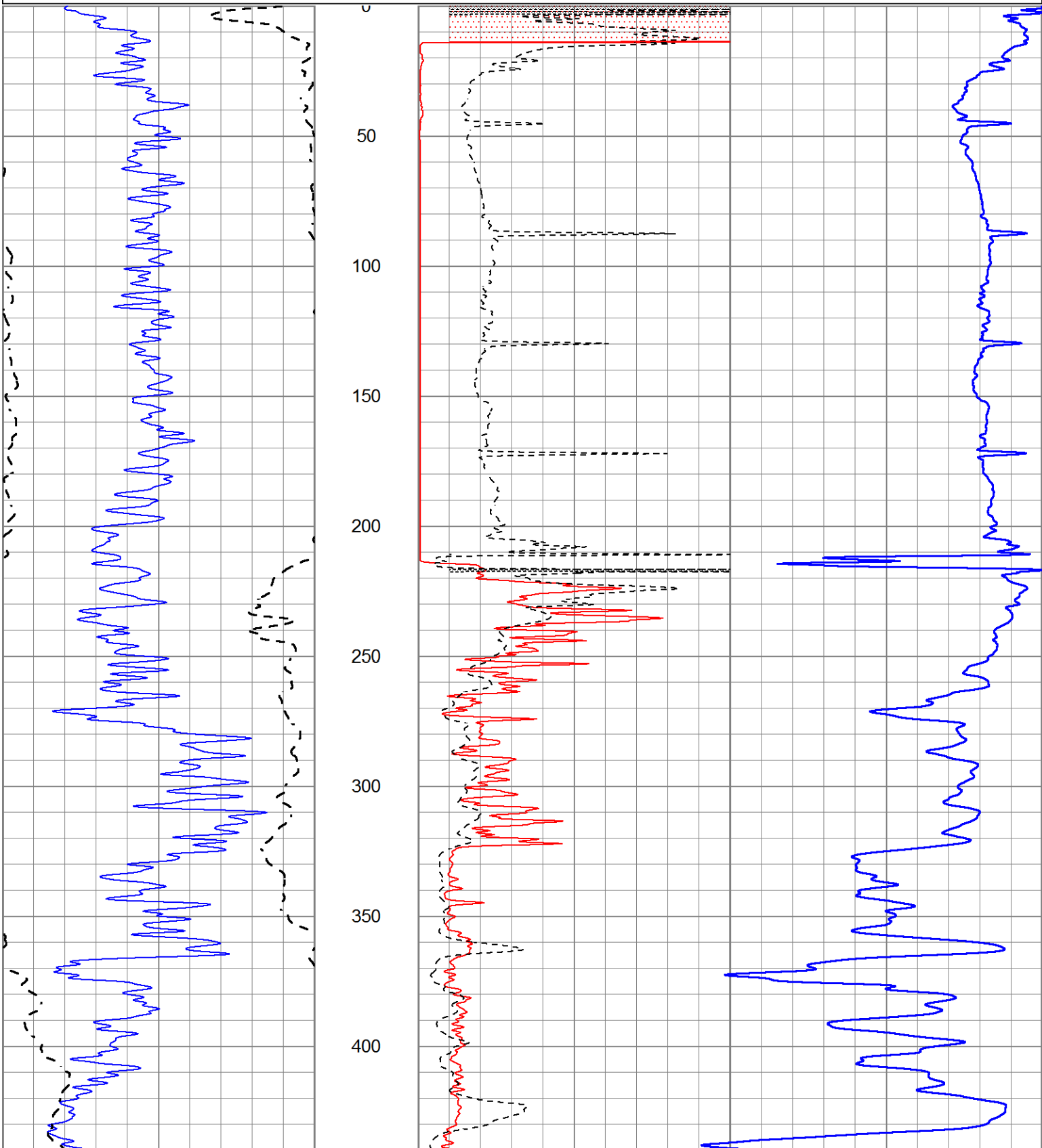


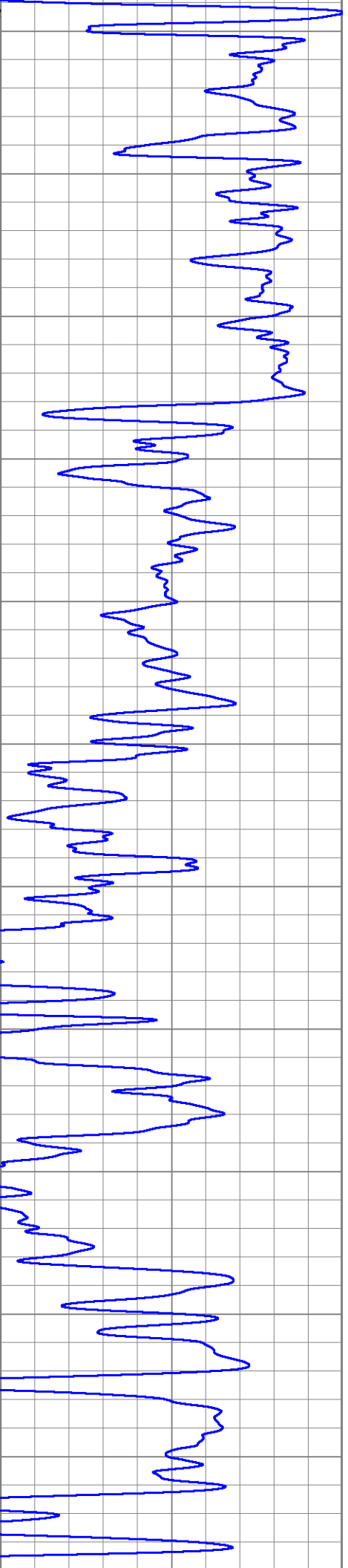
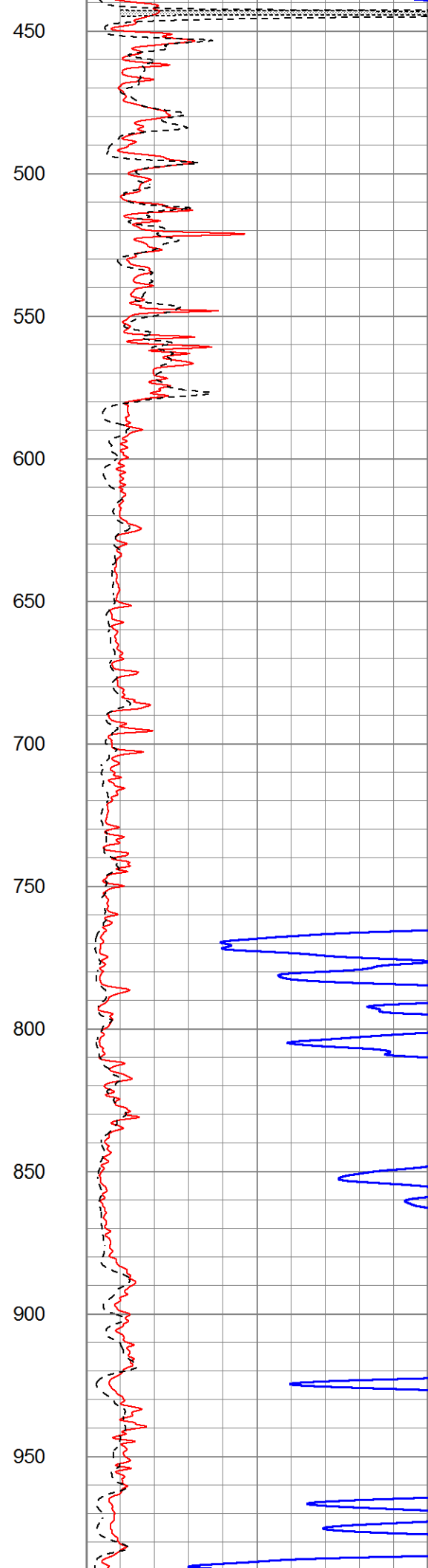
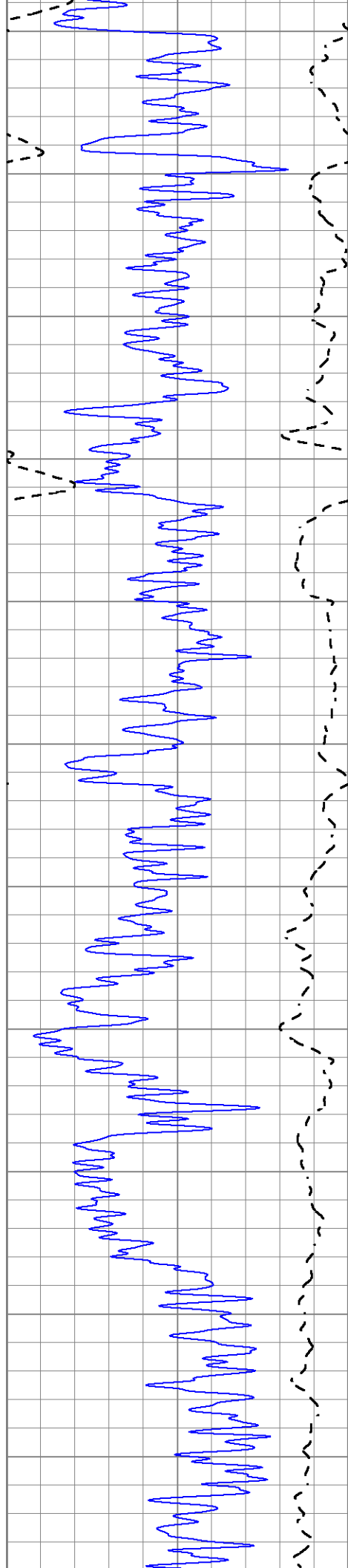
MAIN SECTION

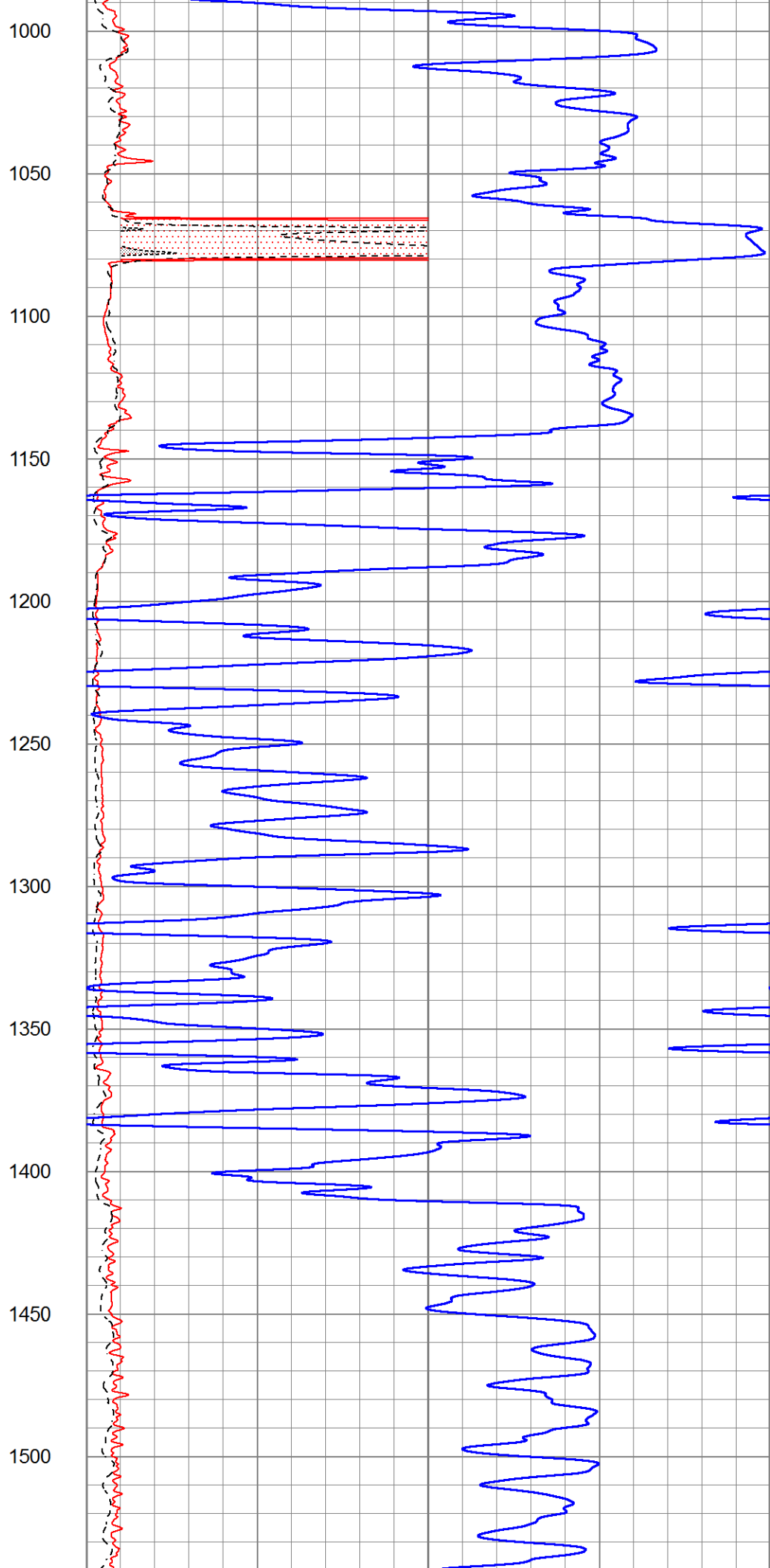
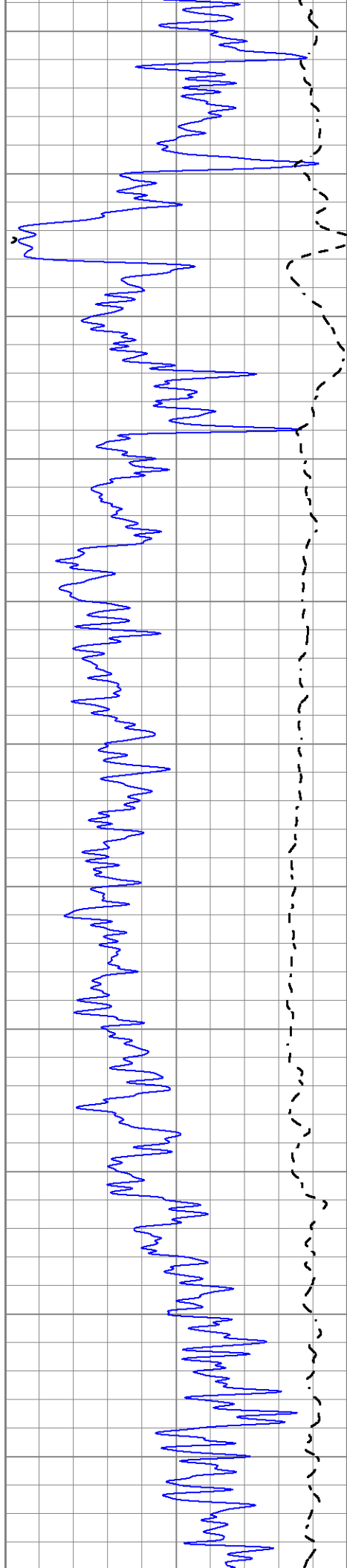
Database File 5641ddn.db
 Dataset Pathname pass3.3
 Presentation Format _dil2
 Dataset Creation Thu Aug 12 13:21:25 2021
 Charted by Depth in Feet scaled 1:600

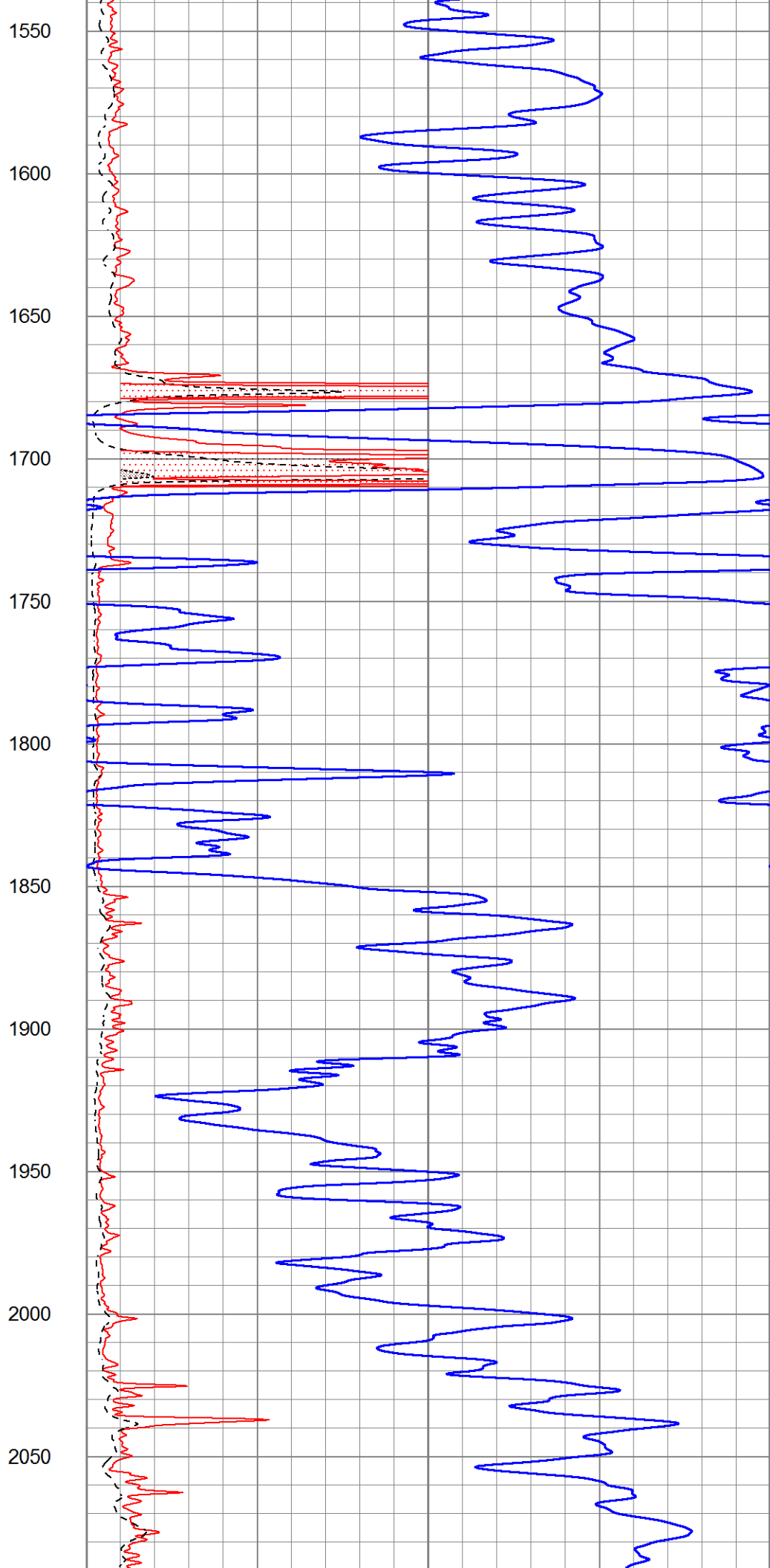
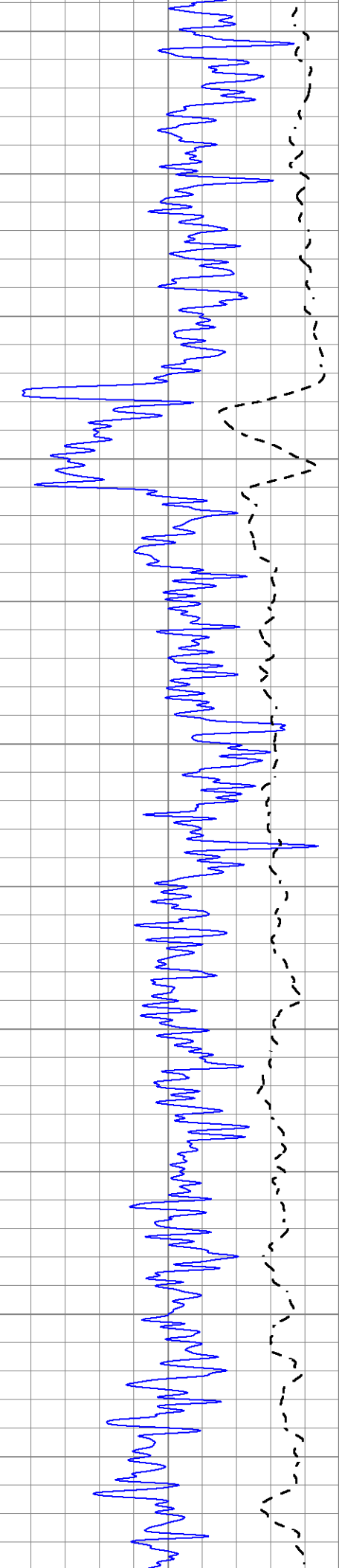
0	Gamma Ray (GAPI)	150
-100	SP (mV)	100

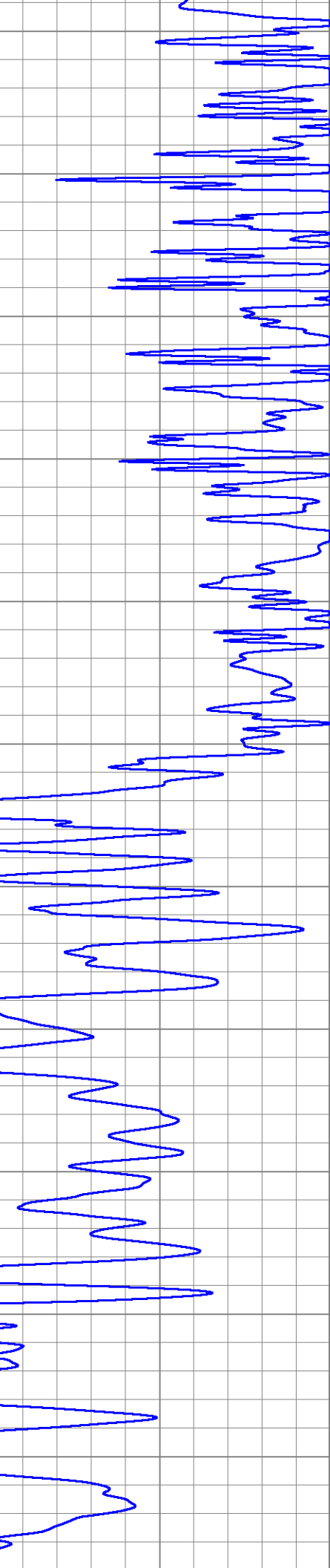
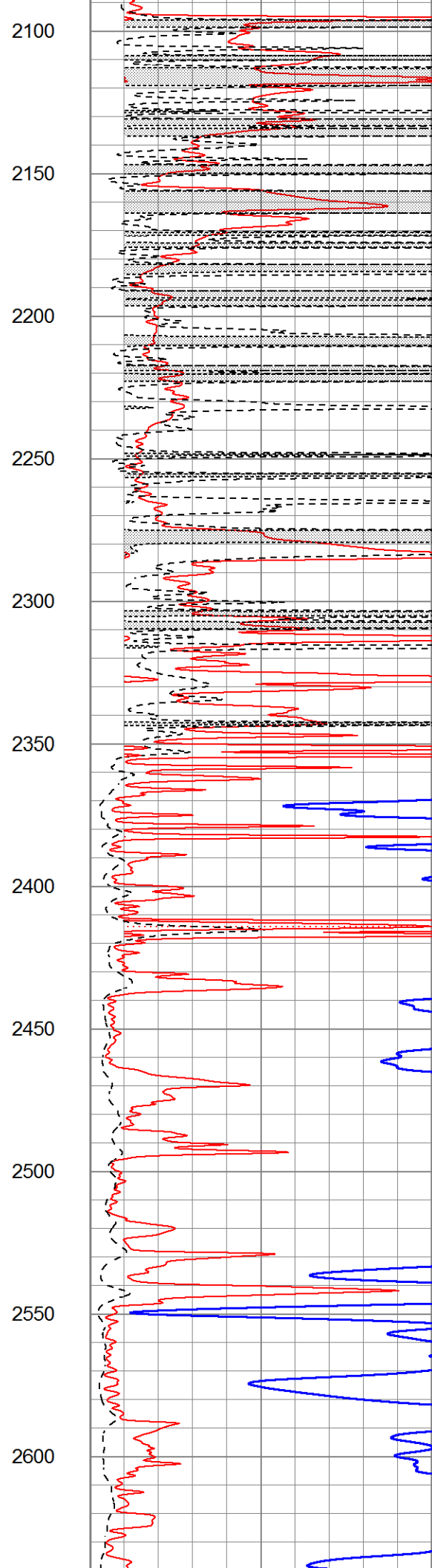
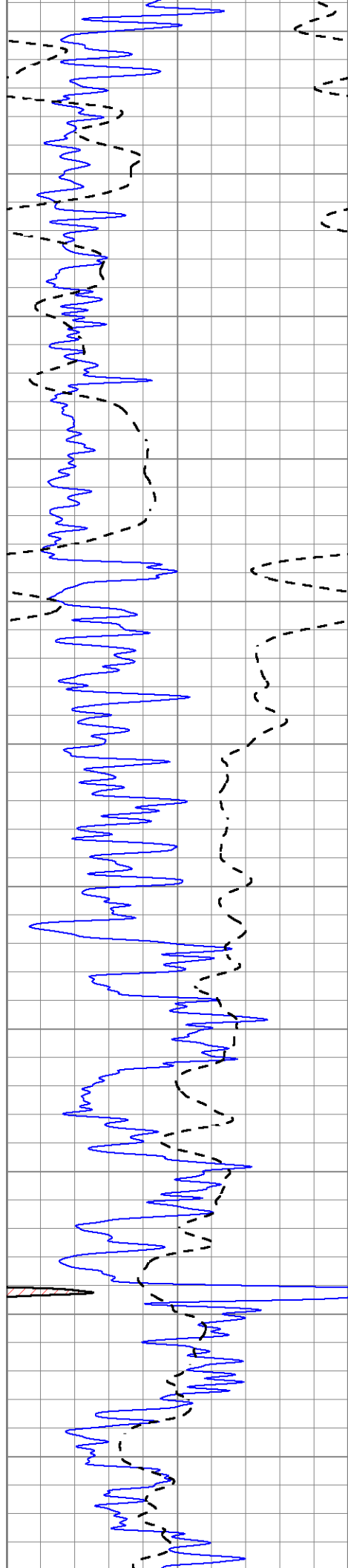
1000	CILD (mmho/m)	0
0	RLL3 (Ohm-m)	50
0	Deep Induction (Ohm-m)	50
50	RILD X10 (Ohm-m)	500
50	RLL3 X10 (Ohm-m)	500

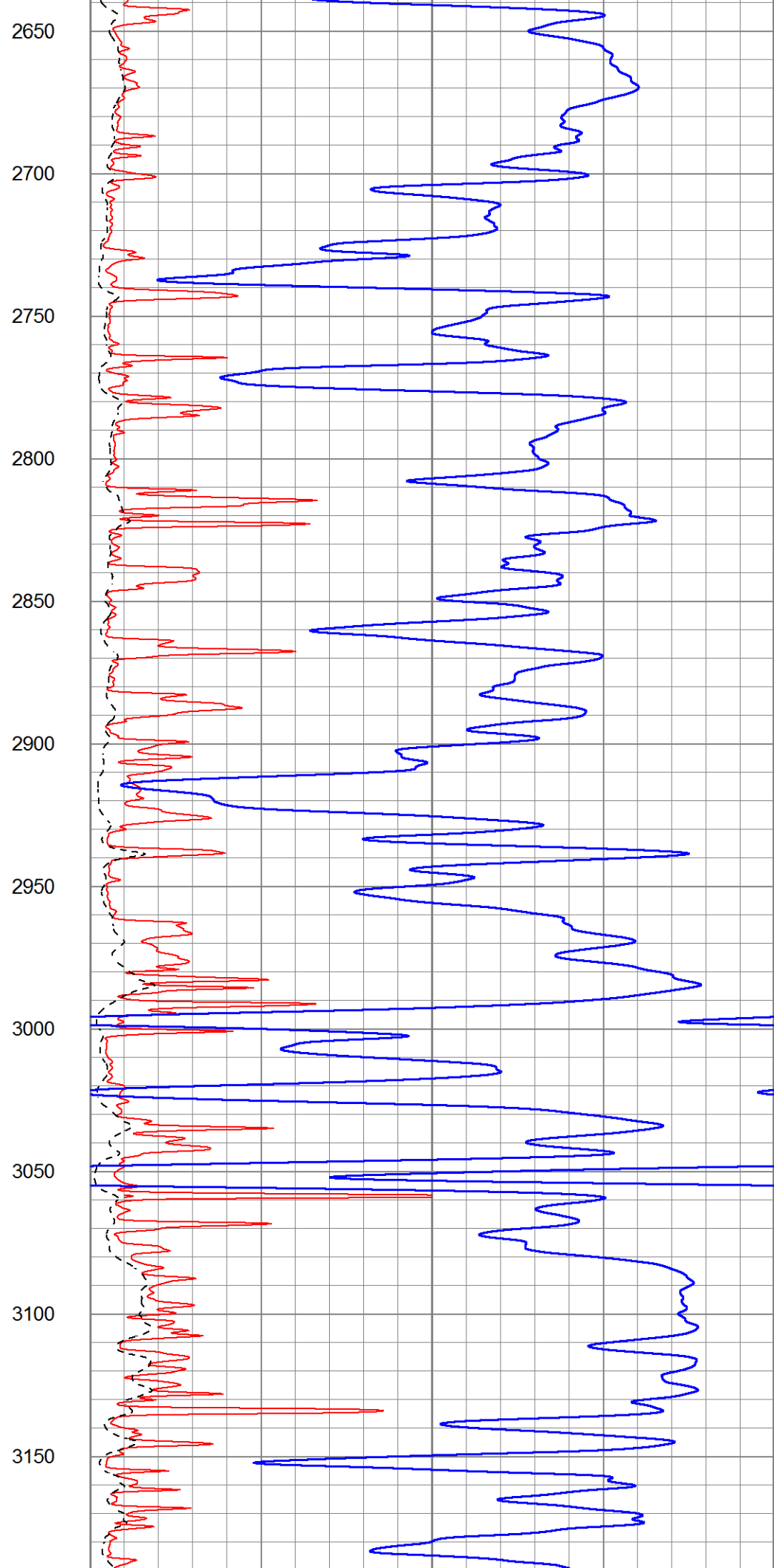
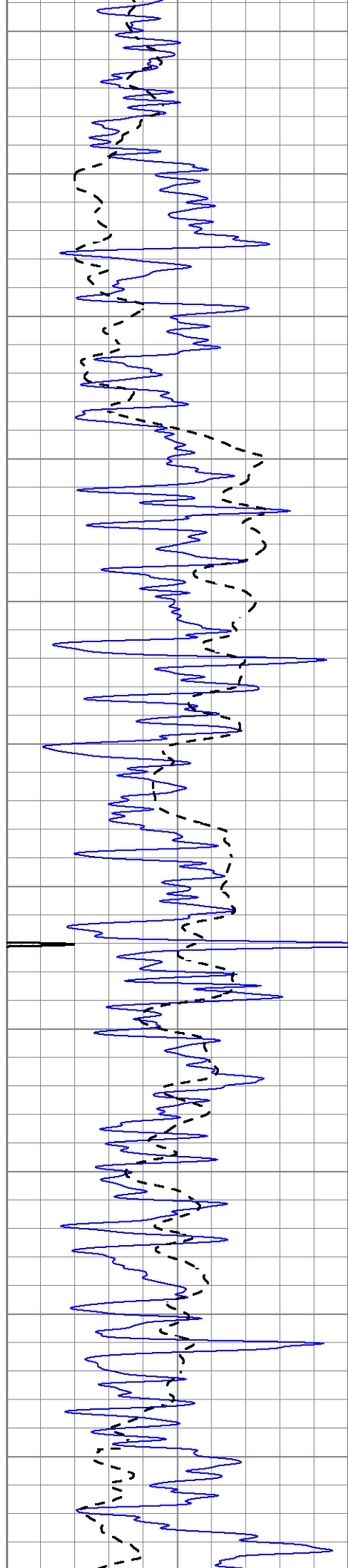




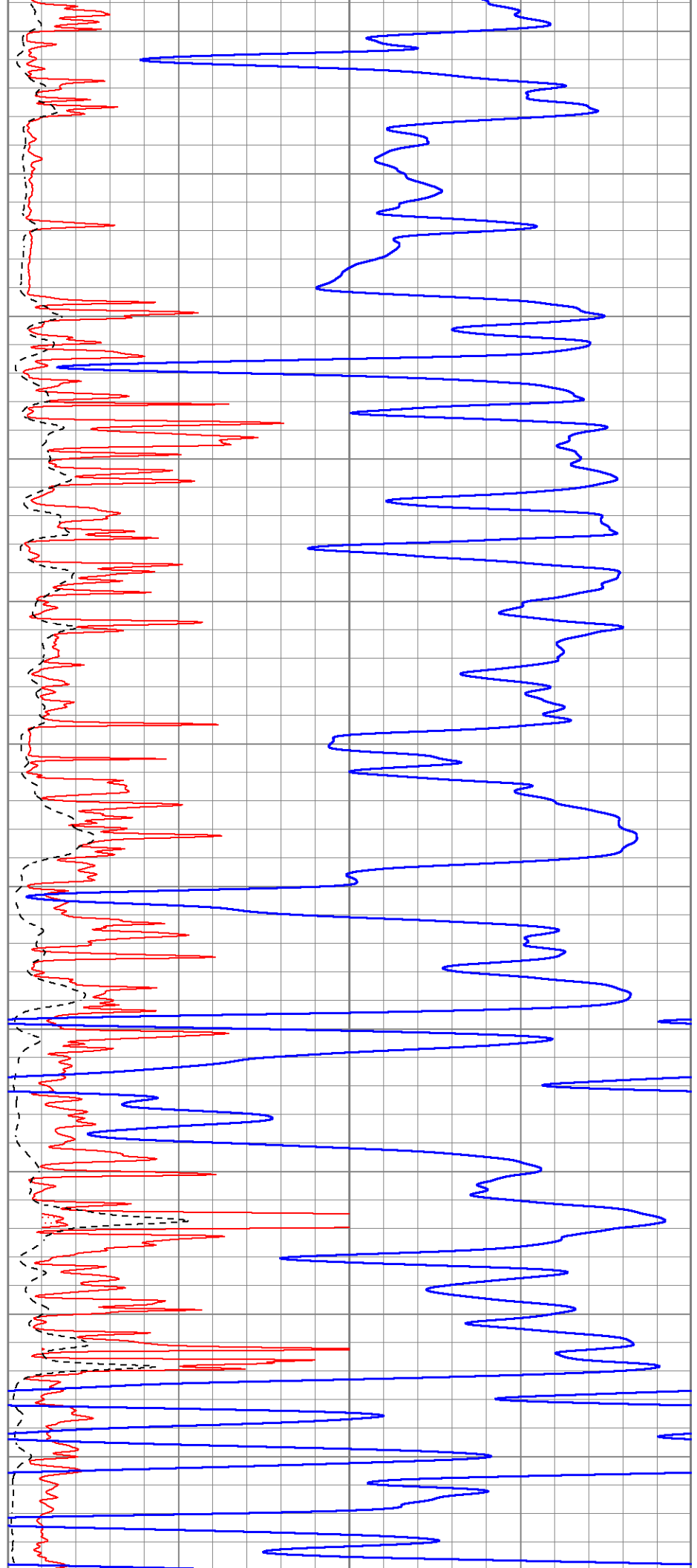
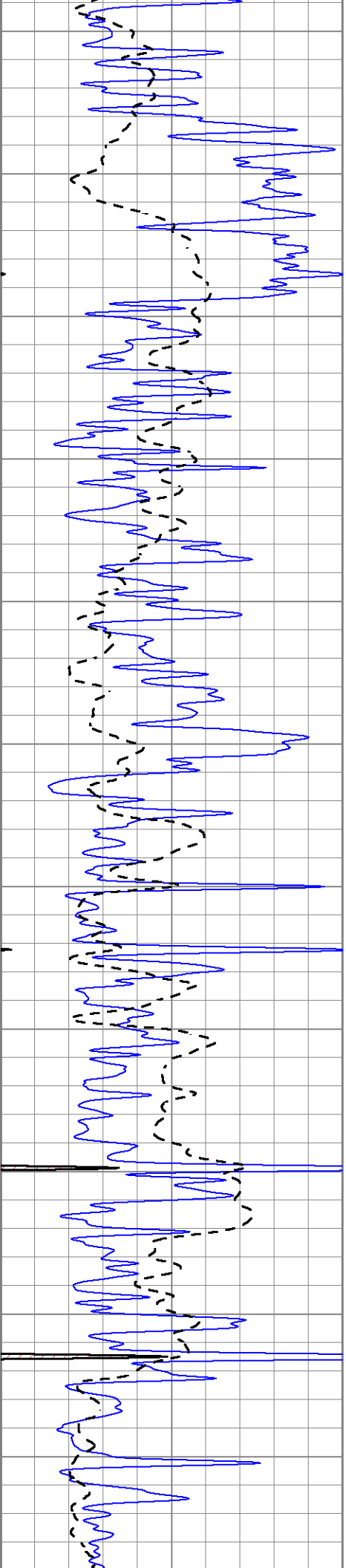


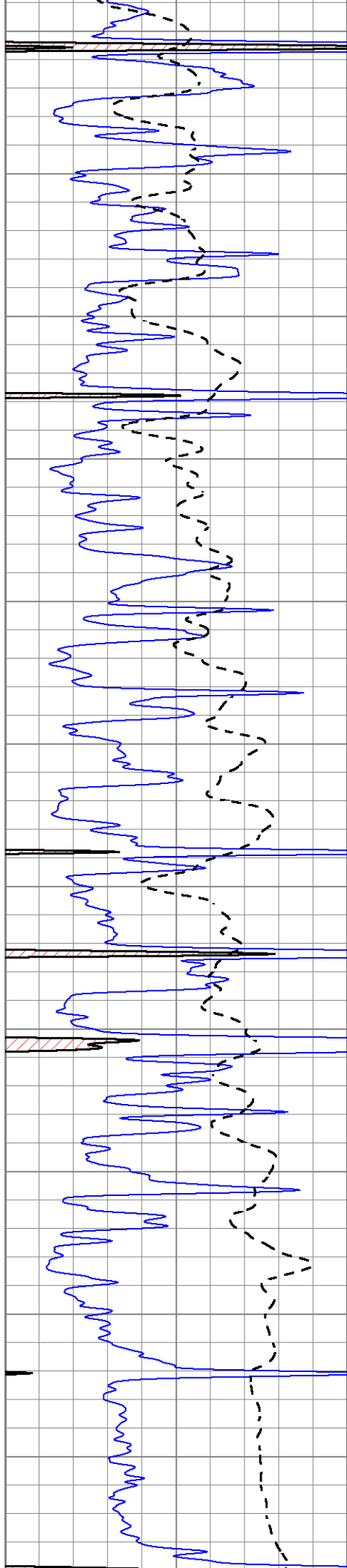




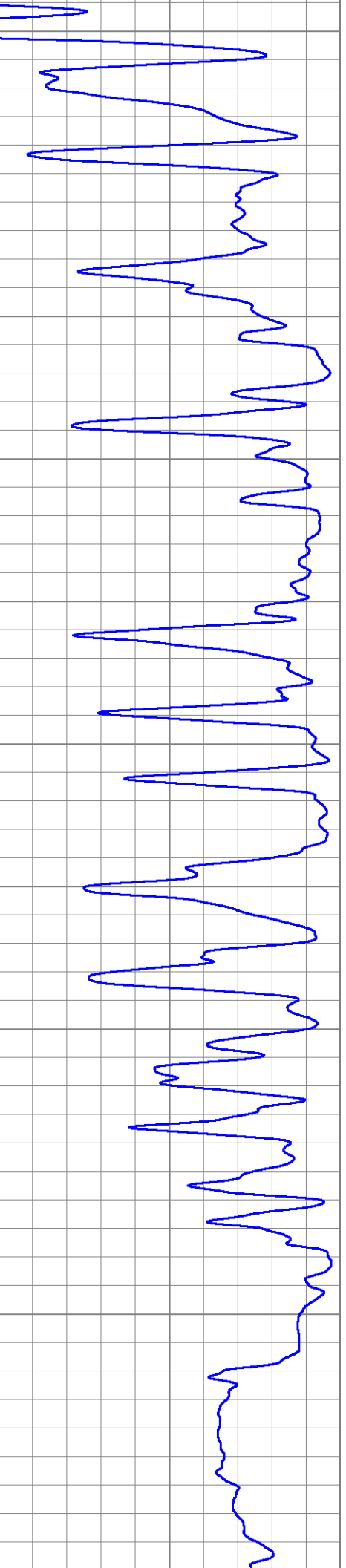
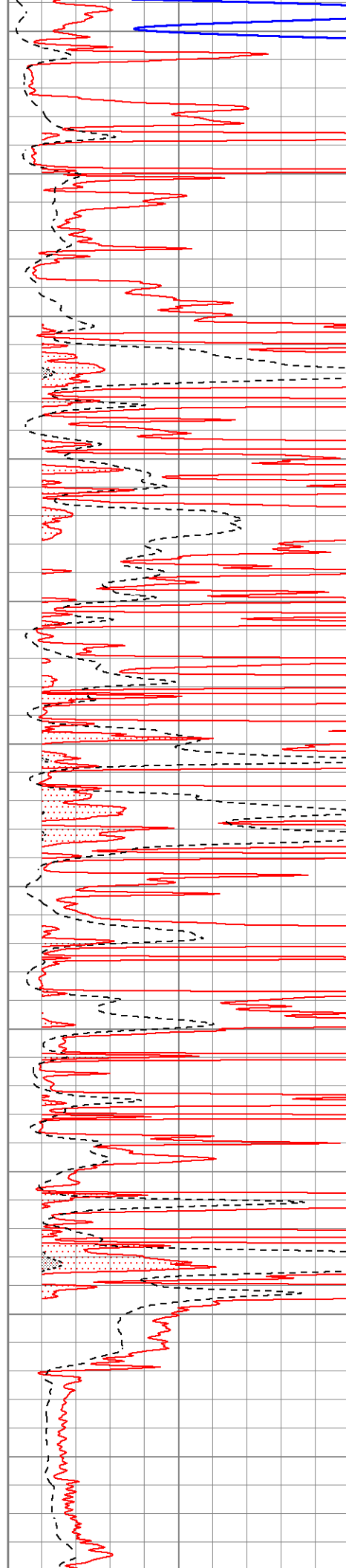


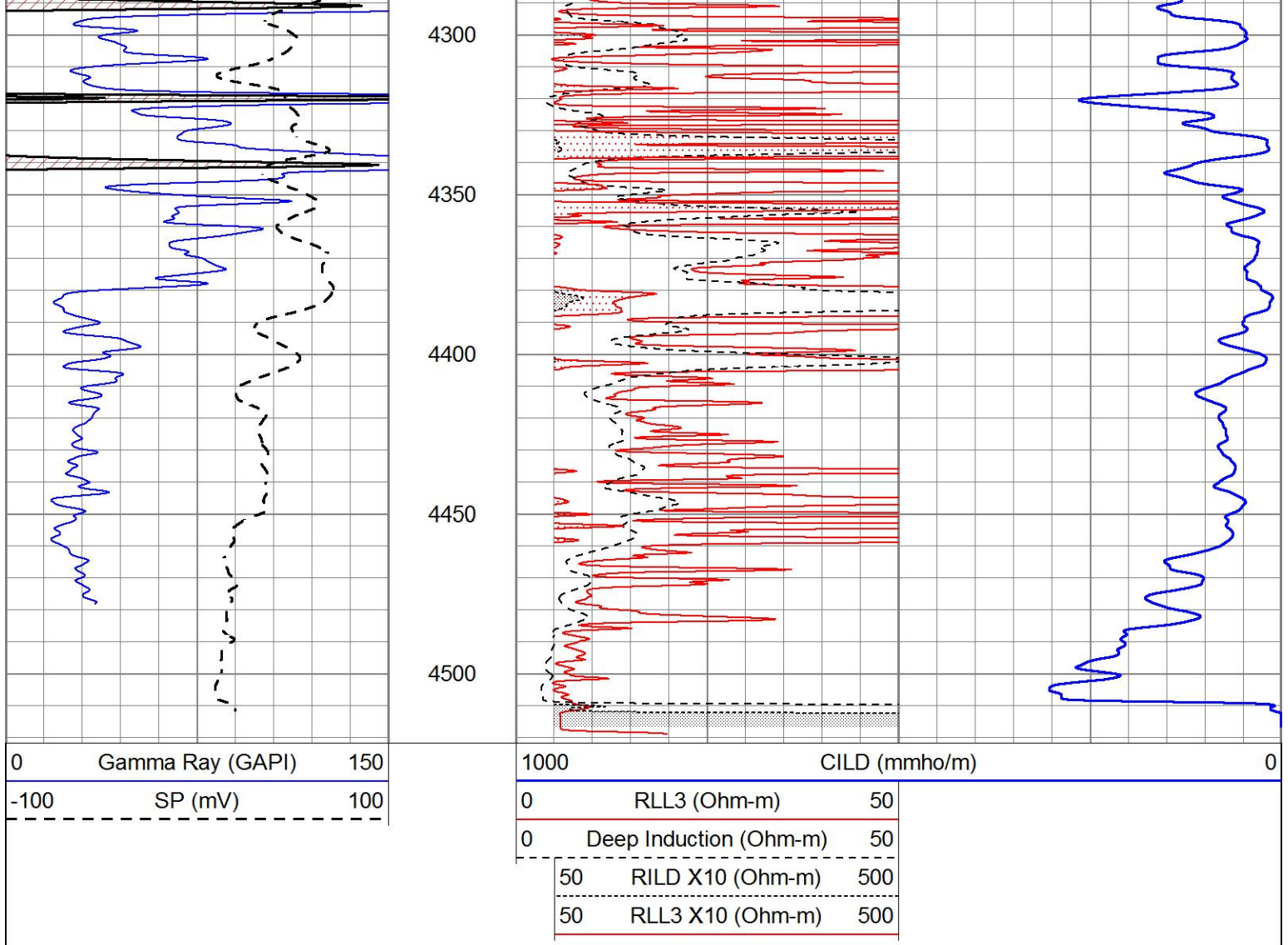
3200
3250
3300
3350
3400
3450
3500
3550
3600
3650
3700





3750
3800
3850
3900
3950
4000
4050
4100
4150
4200
4250



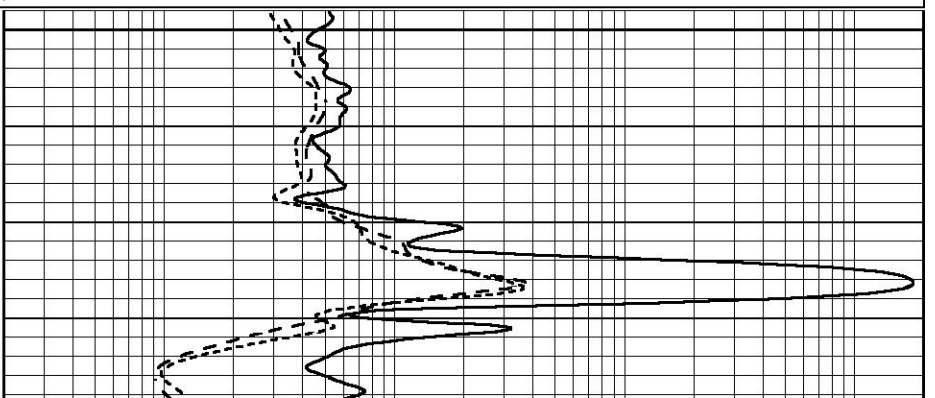
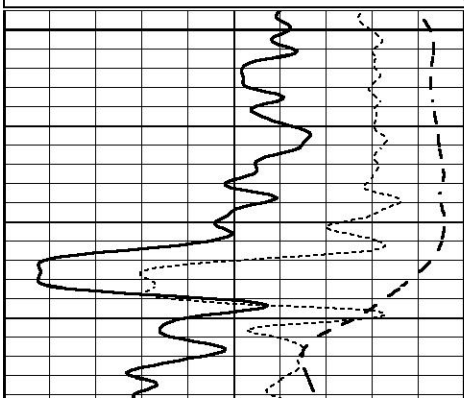


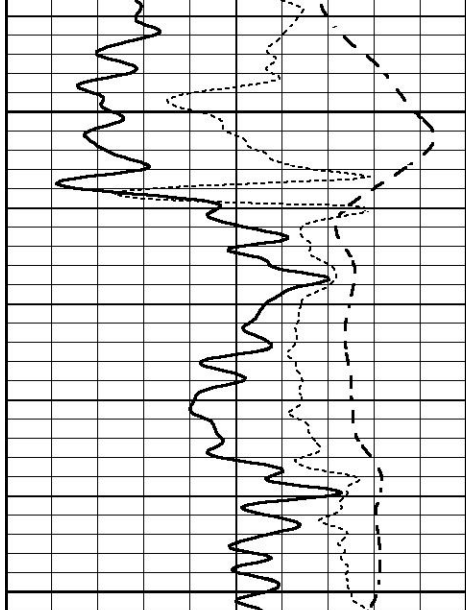
ANHYDRITE

Database File 5641ddn.db
 Dataset Pathname pass3.2
 Presentation Format _dil
 Dataset Creation Thu Aug 12 12:27:41 2021
 Charted by Depth in Feet scaled 1:240

0	GAMMA RAY (GAPI)	150
-100	SP (mV)	100
-250	Rxo/Rt	50

0.2	SHALLOW GUARD (Ohm-m)	2000
0.2	MEDIUM INDUCTION (Ohm-m)	2000
0.2	DEEP INDUCTION (Ohm-m)	2000

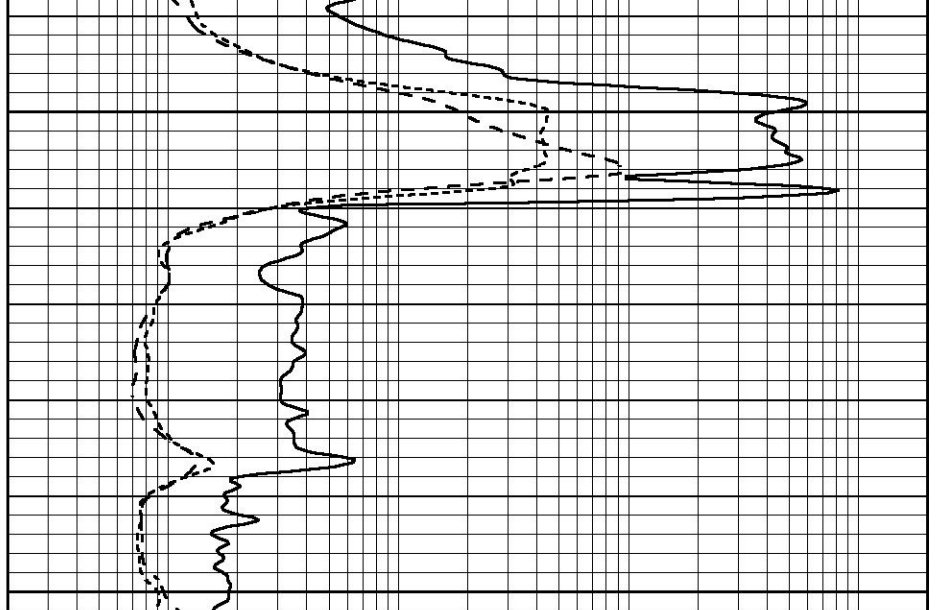




1700

1750

0	GAMMA RAY (GAPI)	150
-100	SP (mV)	100
-250	Rxo/Rt	50



0.2	SHALLOW GUARD (Ohm-m)	2000
0.2	MEDIUM INDUCTION (Ohm-m)	2000
0.2	DEEP INDUCTION (Ohm-m)	2000

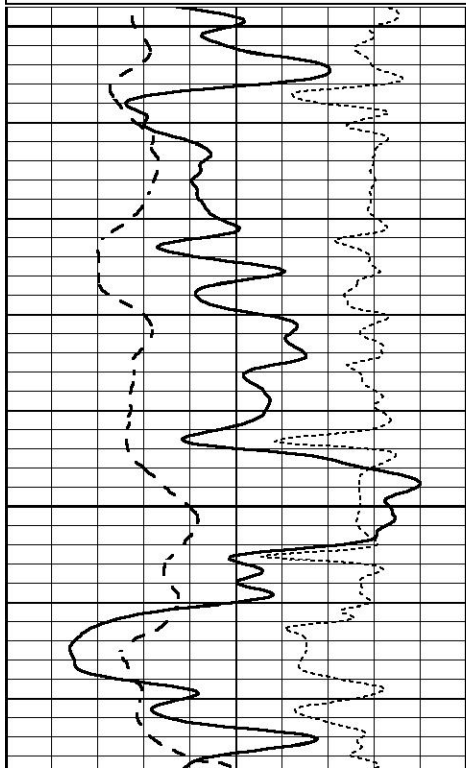


MAIN SECTION

Database File 5641ddn.db
 Dataset Pathname pass3.3
 Presentation Format _dil
 Dataset Creation Thu Aug 12 13:21:25 2021
 Charted by Depth in Feet scaled 1:240

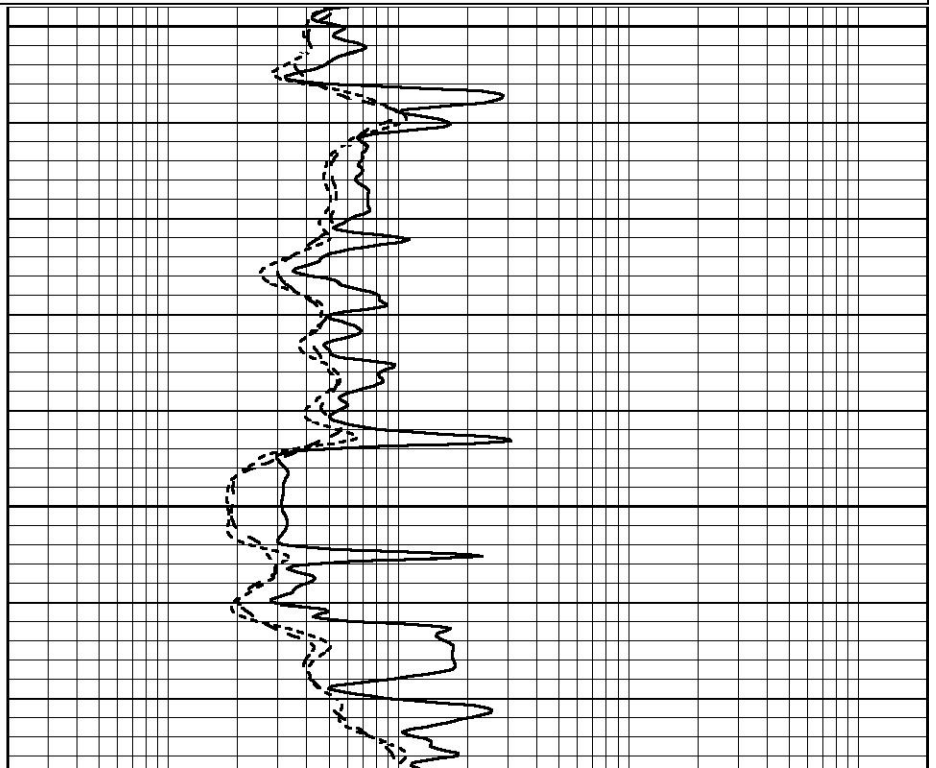
0	GAMMA RAY (GAPI)	150
-100	SP (mV)	100
-250	Rxo/Rt	50

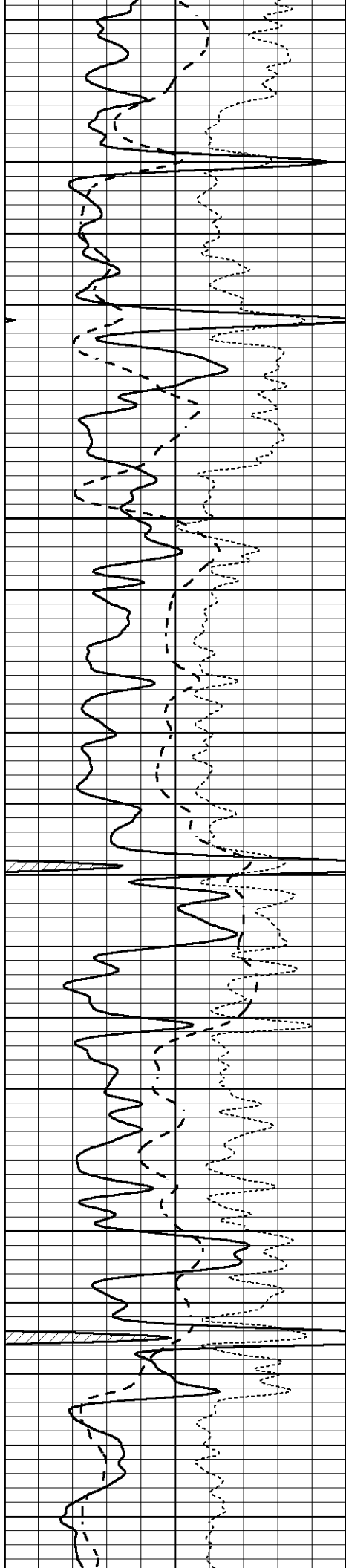
0.2	SHALLOW GUARD (Ohm-m)	2000
0.2	MEDIUM INDUCTION (Ohm-m)	2000
0.2	DEEP INDUCTION (Ohm-m)	2000



3400

3450





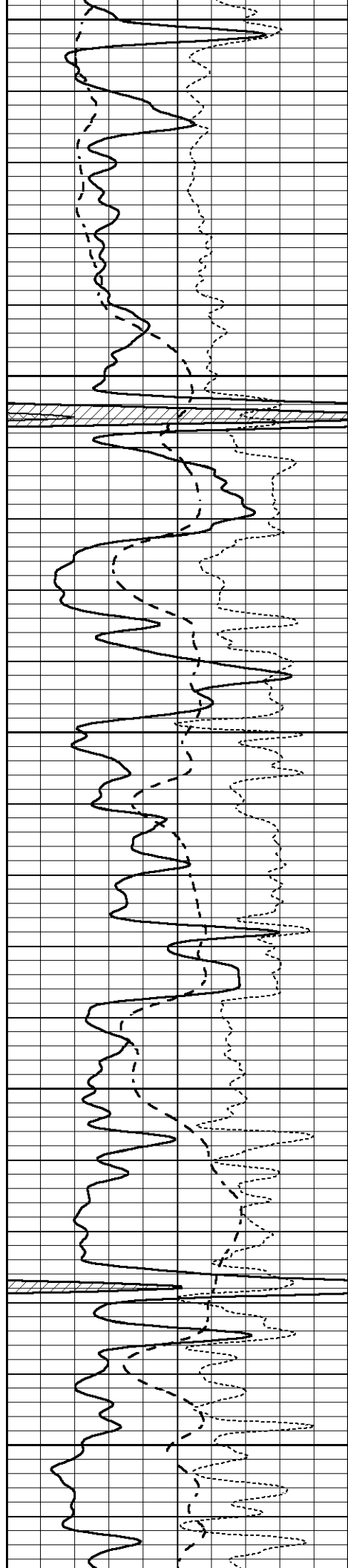
3500

3550

3600

3650





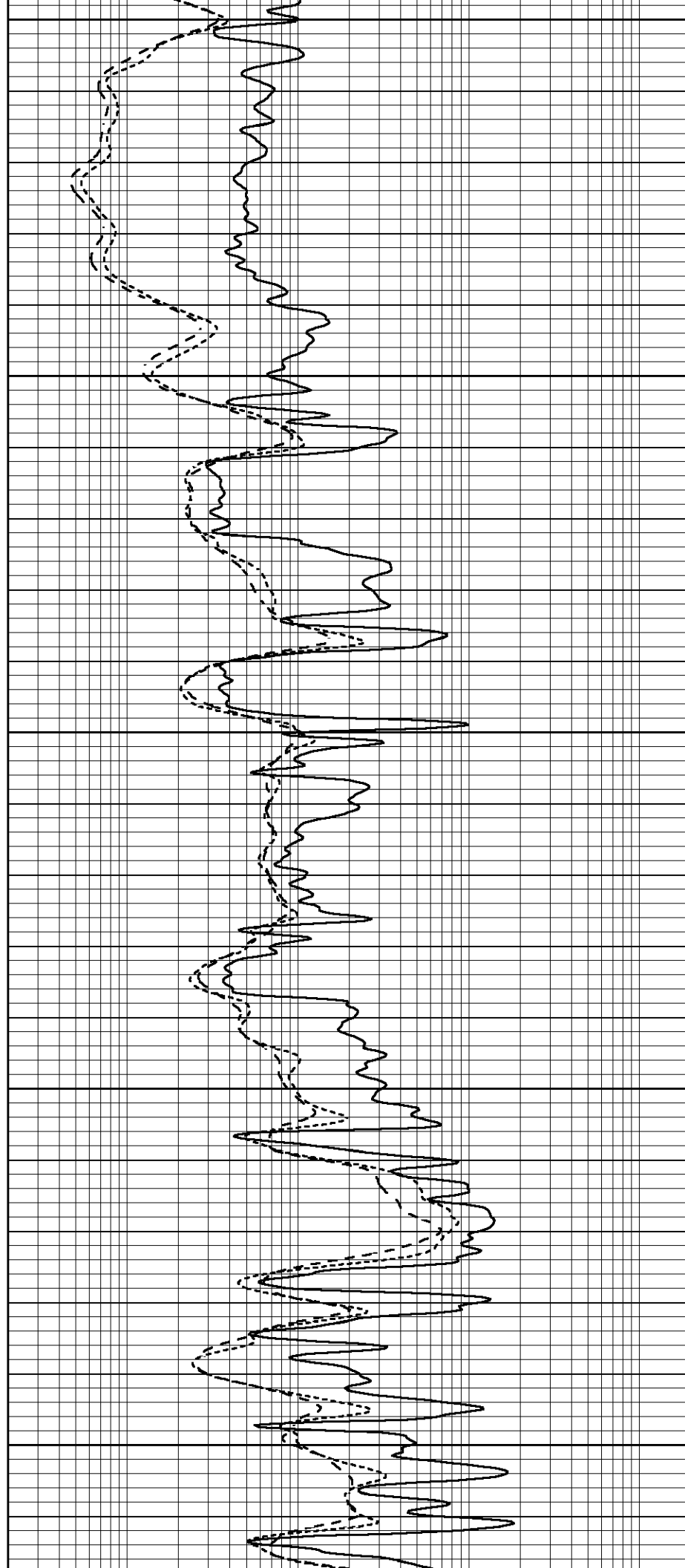
3700

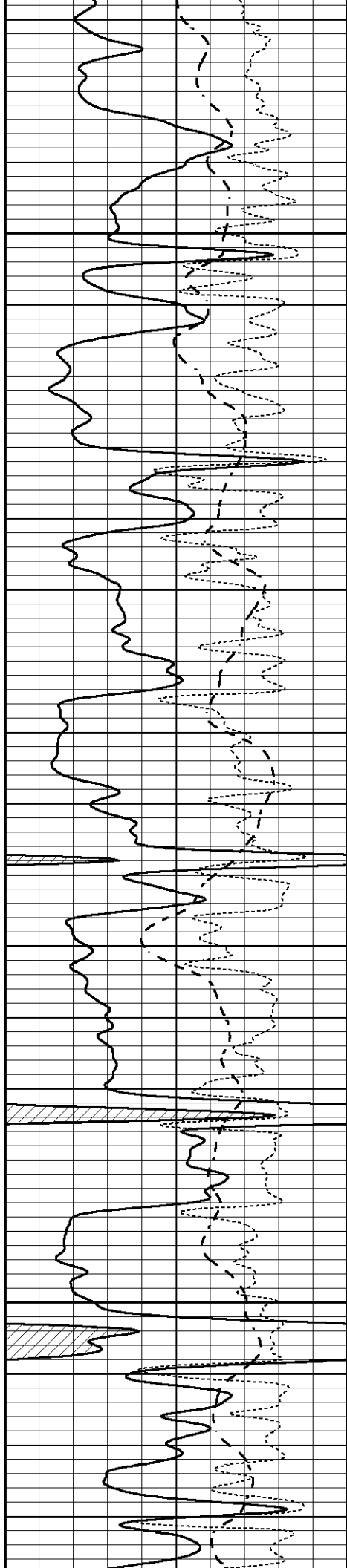
3750

3800

3850

3900



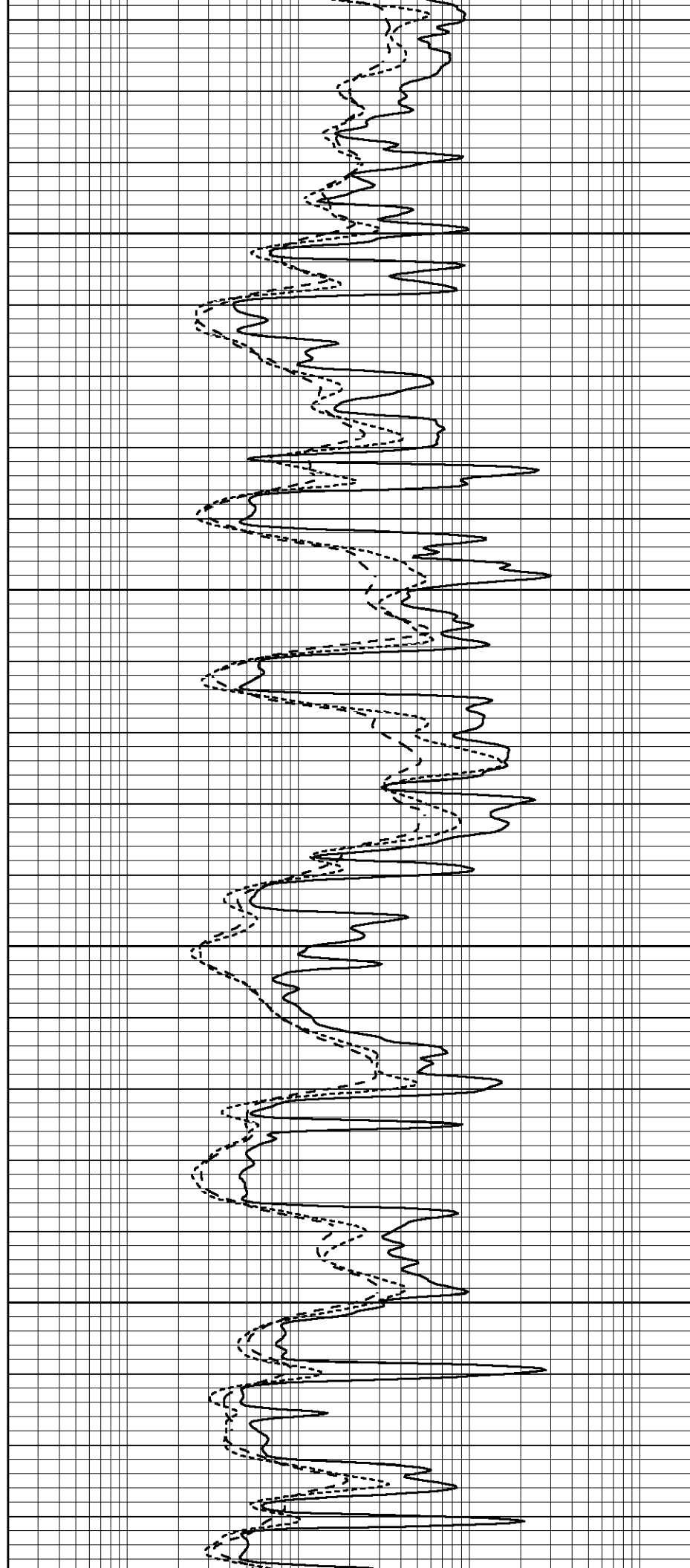


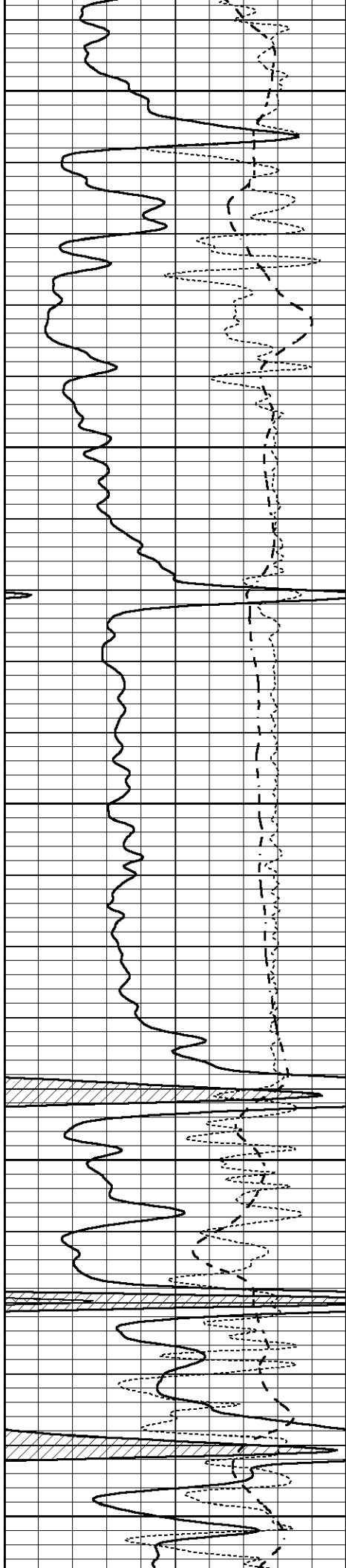
3950

4000

4050

4100





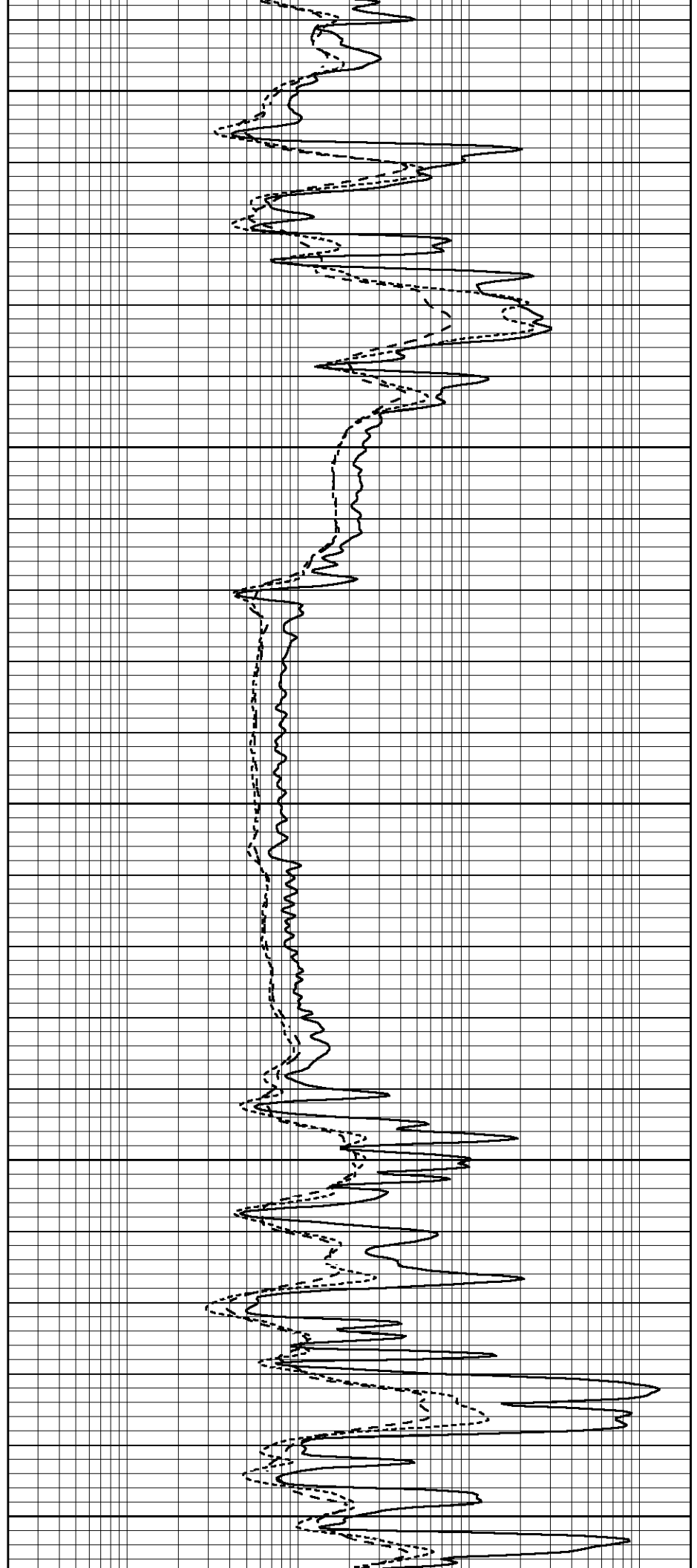
4150

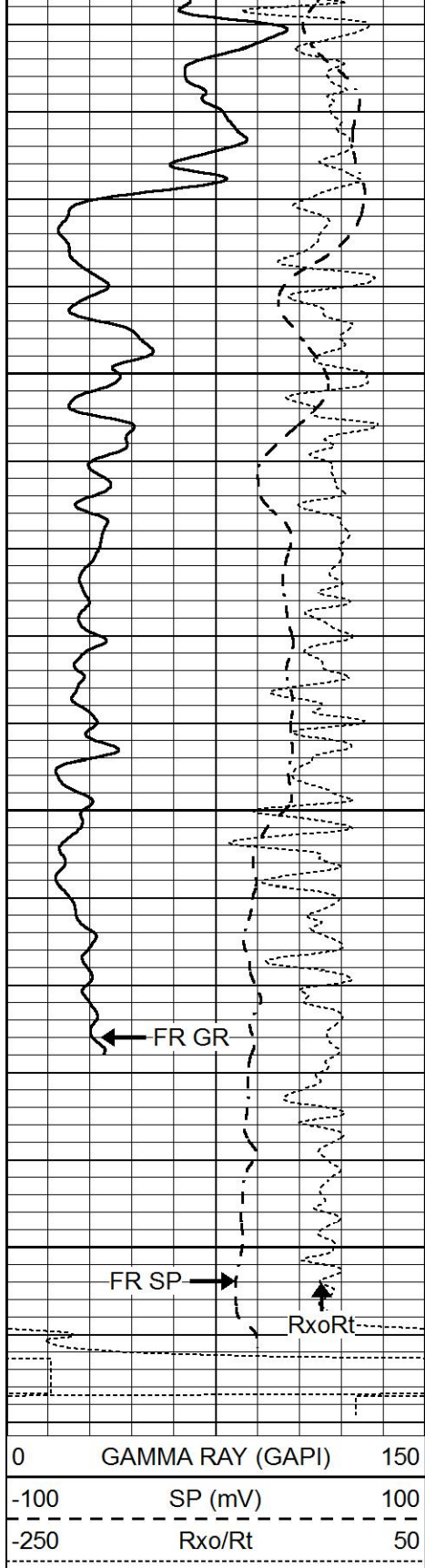
4200

4250

4300

4350



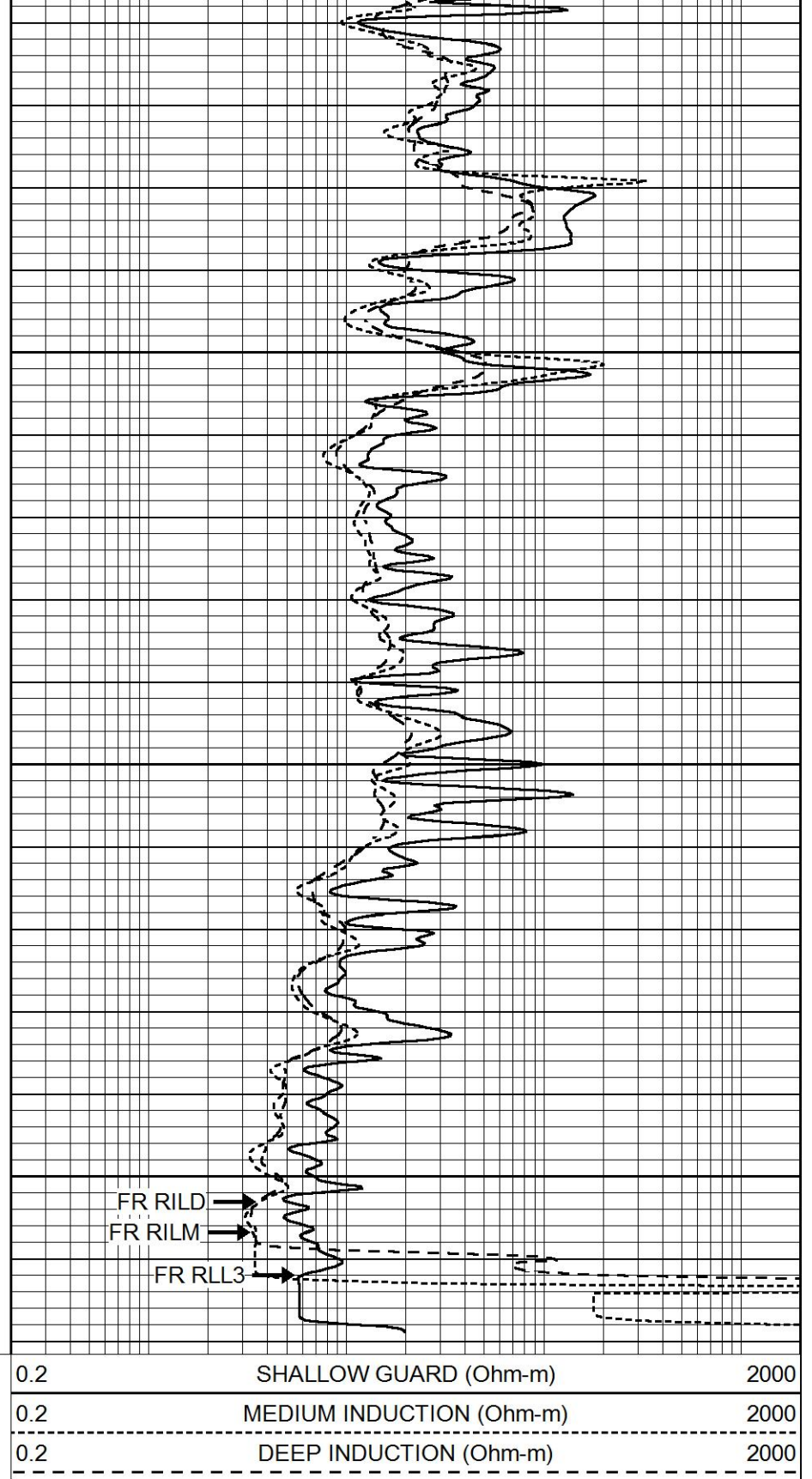


4400

4450

4500

LTD 4514

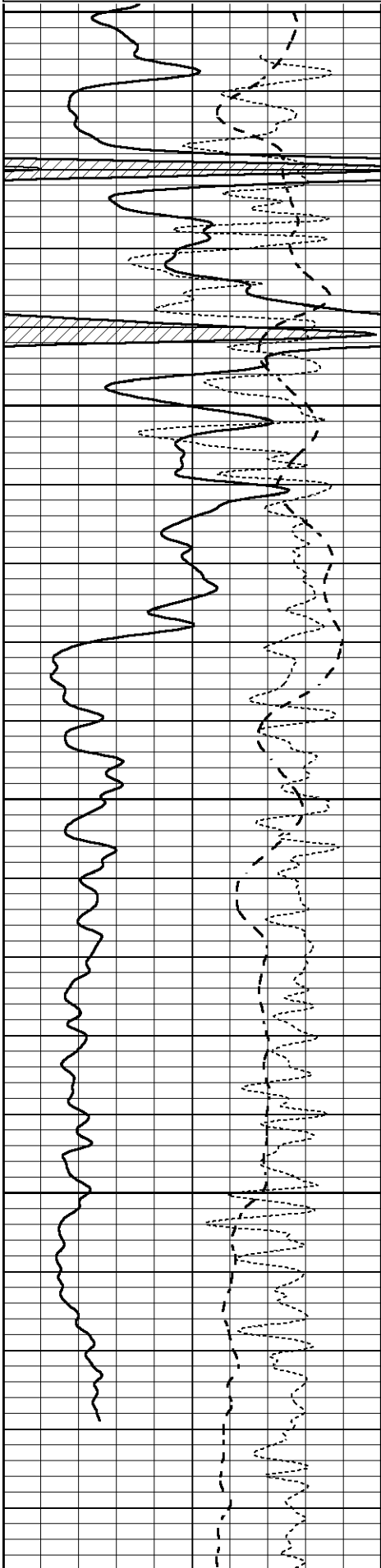


REPEAT SECTION

Database File 5641ddn.db
 Dataset Pathname pass2.1
 Presentation Format _dil
 Dataset Creation Thu Aug 12 12:03:44 2021

0	GAMMA RAY (GAPI)	150
-100	SP (mV)	100
-250	Rxo/Rt	50

0.2	SHALLOW GUARD (Ohm-m)	2000
0.2	MEDIUM INDUCTION (Ohm-m)	2000
0.2	DEEP INDUCTION (Ohm-m)	2000

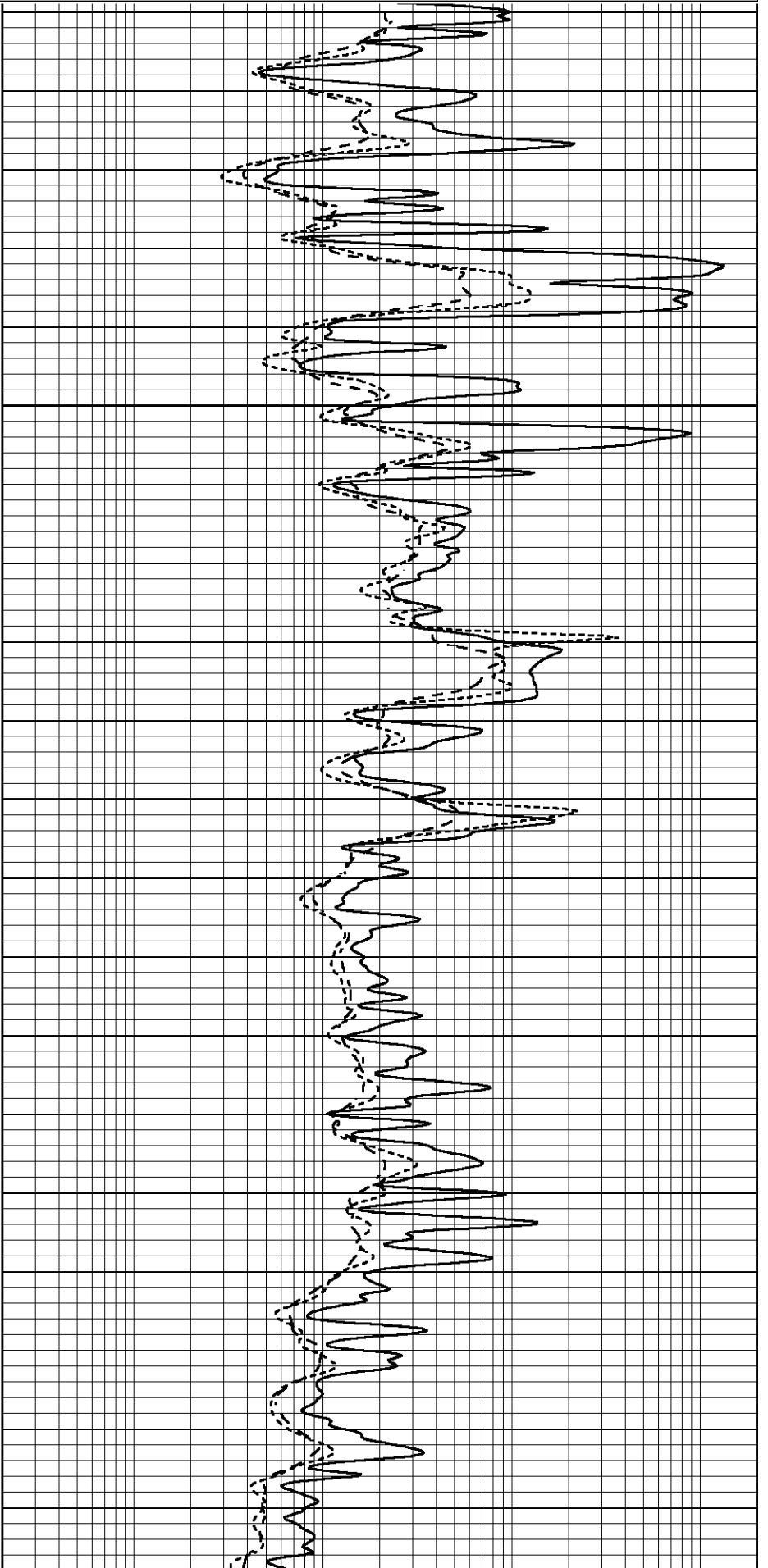


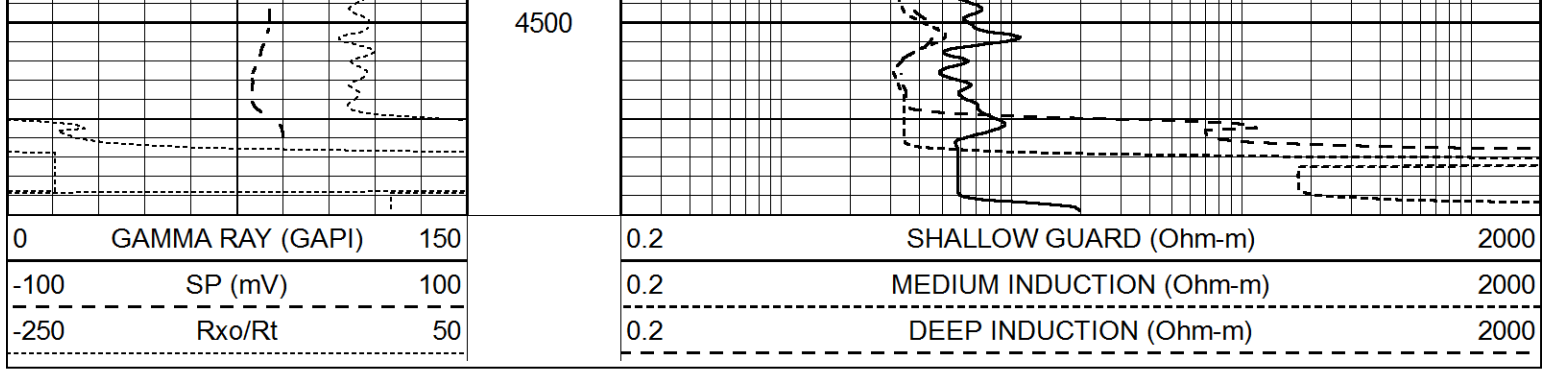
4300

4350

4400

4450





Calibration Report

Database File 5641ddn.db
 Dataset Pathname pass2.1
 Dataset Creation Thu Aug 12 12:03:44 2021

Dual Induction Calibration Report

Serial-Model: FW1410-55-Probe
 Surface Cal Performed: Tue Feb 19 11:44:18 2019
 Downhole Cal Performed: Tue Feb 19 11:44:24 2019
 After Survey Verification Performed: Tue Feb 19 11:44:27 2019

Surface Calibration

Loop:	Readings			References			Results	
	Air	Loop		Air	Loop		m	b
Deep	0.011	0.656	V	1.000	400.000	mmho/m	618.595	-5.524
Medium	-0.000	0.731	V	1.000	464.000	mmho/m	632.856	1.197
Internal:	Zero	Cal		Zero	Cal		m	b
Deep	0.007	0.649	V	0.000	400.000	mmho/m	623.784	-4.595
Medium	0.004	0.743	V	0.000	464.000	mmho/m	627.284	-2.251

Downhole Calibration

	Readings			References			Results	
	Zero	Cal		Zero	Cal		m'	b'
Deep	-0.824	395.917	mmho/m	-0.976	397.550	mmho/m	1.004	-0.149
Medium	3.565	471.327	mmho/m	3.468	471.590	mmho/m	1.001	-0.099
LL3		7.503	V		1500.000	Ohm-m		
		0.001	V		20.000	Ohm-m		
		-7.481	V		3745.000	mmho-m		

After Survey Verification

	Readings			Targets			Results	
	Zero	Cal		Zero	Cal		m'	b'
Deep	0.000	0.000	mmho/m	-0.824	395.917	mmho/m	1.000	0.000
Medium	0.000	0.000	mmho/m	3.565	471.327	mmho/m	1.000	0.000
LL3		0.000	Ohm-m		1500.000	Ohm-m		
		0.000	Ohm-m		20.000	Ohm-m		
		0.000	mmho-m		3745.000	mmho-m		

Litho Density Calibration Report

Serial: 140703
 Model: V4_10P
 Source Number: 74GBq-19

Master Calibration

Performed: Wed Dec 02 12:04:44 2020

Background Aluminum Magnesium

	Background	Aluminum	Magnesium		
Window 1	595.38	5386.50	23898.92	cps	
Window 2	52.78	1248.21	5993.75	cps	
Window 4	251.36	1200.30	5155.55	cps	
Window 5	545.15	9066.30	17240.12	cps	
Window 6	43.35	1491.73	2929.24	cps	
Window 8	258.76	2917.82	5450.26	cps	
Bulk Density	-	2.6020	1.6830	g/cc	
Pe	-	3.0000	2.5070	b/e	
LS Alpha:	: -1.8726	SS Alpha:	: -0.7656	LS CPE:	: 1.0742
LS Beta:	: 127345.0723	SS Beta:	: 20293.3834	SS CPE:	: 1.5427

Before Survey Background Counts Verification

Performed: Wed Dec 31 18:00:00 1969

Window 1	0.00	cps
Window 2	0.00	cps
Window 4	0.00	cps
Window 5	0.00	cps
Window 6	0.00	cps
Window 8	0.00	cps

After Survey Background Counts Verification

Performed: Wed Dec 31 18:00:00 1969

Window 1	0.00	cps
Window 2	0.00	cps
Window 4	0.00	cps
Window 5	0.00	cps
Window 6	0.00	cps
Window 8	0.00	cps

Lithodensity Caliper Calibration

Performed: Wed Dec 02 12:04:44 2020

Results		Readings		References (in)		Gain	Offset
Low	High	Low	High	Low	High		
8005.3	11087.2	8.0	14.0			0.0	-7.5

Before Survey Caliper Verification

Performed:

	Reference	Reading
Caliper (in)	_____	_____

After Survey Caliper Verification

Performed:

	Reference	Reading
Caliper (in)	_____	_____

Compensated Neutron Calibration Report

Serial Number: 080621PMC
Tool Model: NABORS

PRE-SURVEY VERIFICATION

Detector Readings Measured Target

Detector	Readings	Measured	Target
Short Space	cps		
Long Space	cps	pu	pu

POST-SURVEY VERIFICATION

Detector	Readings	Measured	Target
Short Space	cps		
Long Space	cps	pu	pu

Gamma Ray Calibration Report

Serial Number:	7	
Tool Model:	Probe1	
Performed:	Tue Jan 19 17:50:08 2021	
Calibrator Value:	1.0	GAPI
Background Reading:	0.0	cps
Calibrator Reading:	1.0	cps
Sensitivity:	0.5300	GAPI/cps