



**COMPENSATED
DENSITY/NEUTRON
LOG**

Company PALOMINO PETROLEUM, INC.

Well DINGES TRUST #4

Field DEX SOUTHWEST

County NESS State KANSAS

Location: API #: 15-135-26110-0000

1002' FSL & 1301' FEL

Other Services
DILMEL

SEC 14 TWP 18S RGE 25W

Permanent Datum GROUND LEVEL Elevation 2410

Log Measured From KELLY BUSHING 5' A.G.L

Drilling Measured From KELLY BUSHING

Elevation

K.B. 2415

D.F. 2413

G.L. 2410

Date	8/12/21		
Run Number	ONE		
Depth Driller	4510		
Depth Logger	4514		
Bottom Logged Interval	4490		
Top Log Interval	3400		
Casing Driller	8 5/8" @ 218		
Casing Logger	218		
Bit Size	7 7/8		
Type Fluid in Hole	CHEMICAL MUD	CHLORIDES 4900 PPM	
Density / Viscosity	9.0/52		
pH / Fluid Loss	10.0/8.8		
Source of Sample	FLOWLINE		
Rm @ Meas. Temp	.95 @ 80F		
Rmf @ Meas. Temp	.71 @ 80F		
Rmc @ Meas. Temp	1.14 @ 80F		
Source of Rmf / Rmc	MEASUREMENT		
Rm @ BHT	.63 @ 120F		
Time Circulation Stopped	2 HOURS		
Time Logger on Bottom	////		
Maximum Recorded Temperature	120F		
Equipment Number	3802		
Location	HAYS, KANSAS		
Recorded By	JASON CAPPELLUCCI		
Witnessed By	RYAN SEIB		

<<< Fold Here >>>

All interpretations are opinions based on inferences from electrical or other measurements and we cannot and do not guarantee the accuracy or correctness of any interpretation, and we shall not, except in the case of gross or willful negligence on our part, be liable or responsible for any loss, costs, damages, or expenses incurred or sustained by anyone resulting from any interpretation made by any of our officers, agents or employees. These interpretations are also subject to our general terms and conditions set out in our current Price Schedule.

Comments

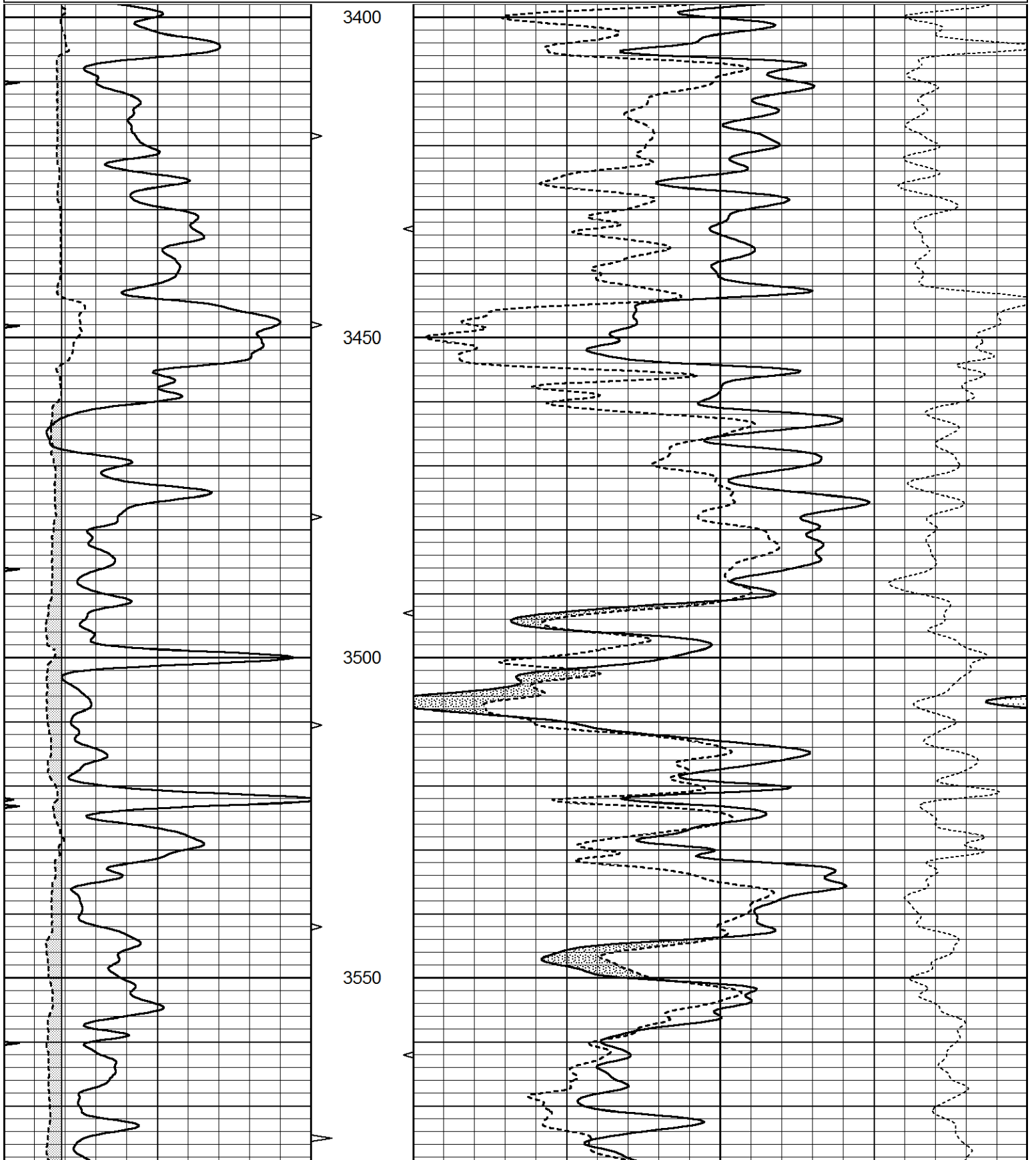
THANK YOU FOR USING ELI WIRELINE SERVICES, HAYS, KS. (785) 628-6395
DIRECTIONS
NESS CITY, KS. - 4 WEST TO RD. N - NORTH TO RD. 160 - WEST TO THE T
1 SOUTH - 1 MILE WEST INTO

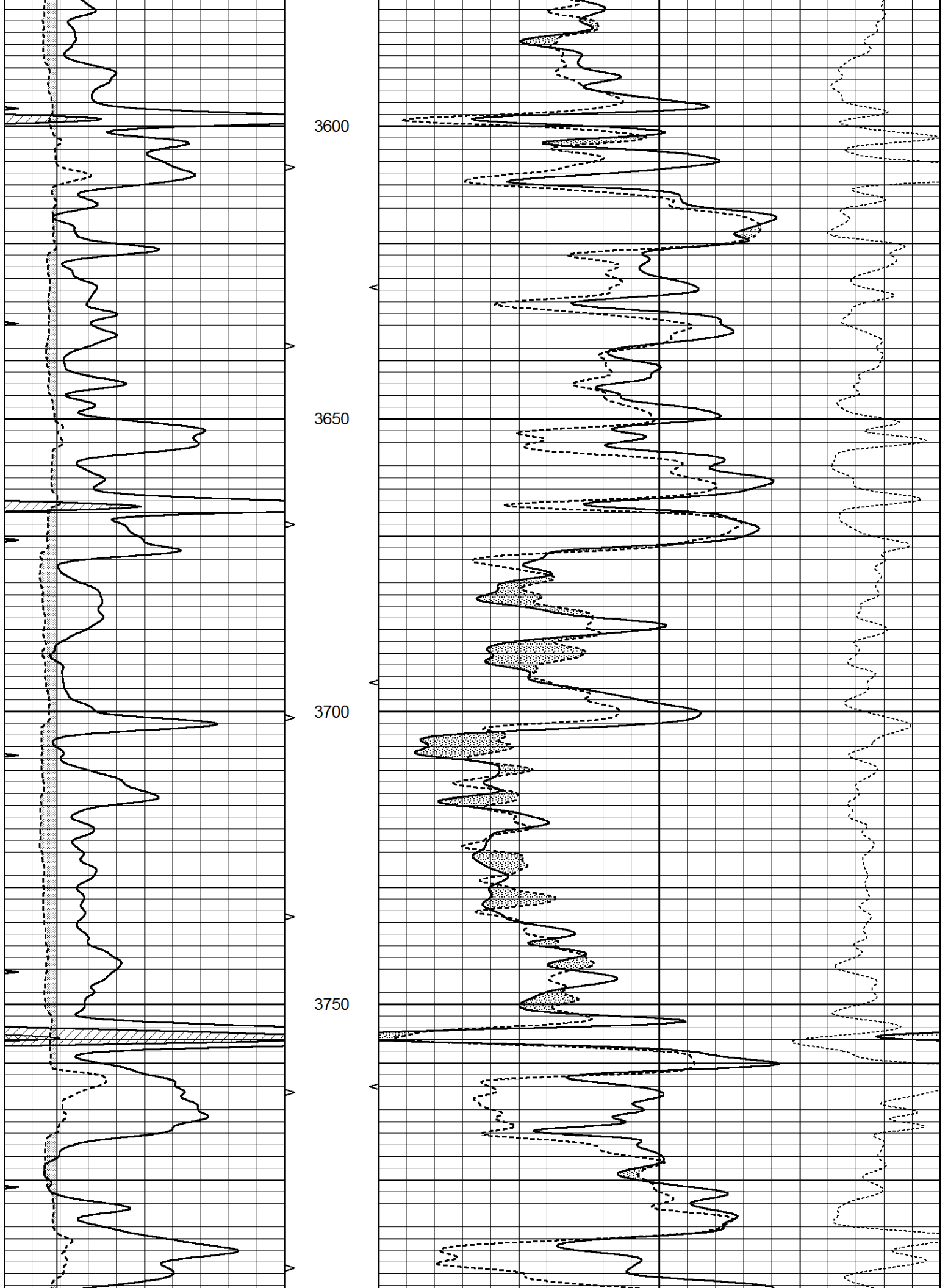


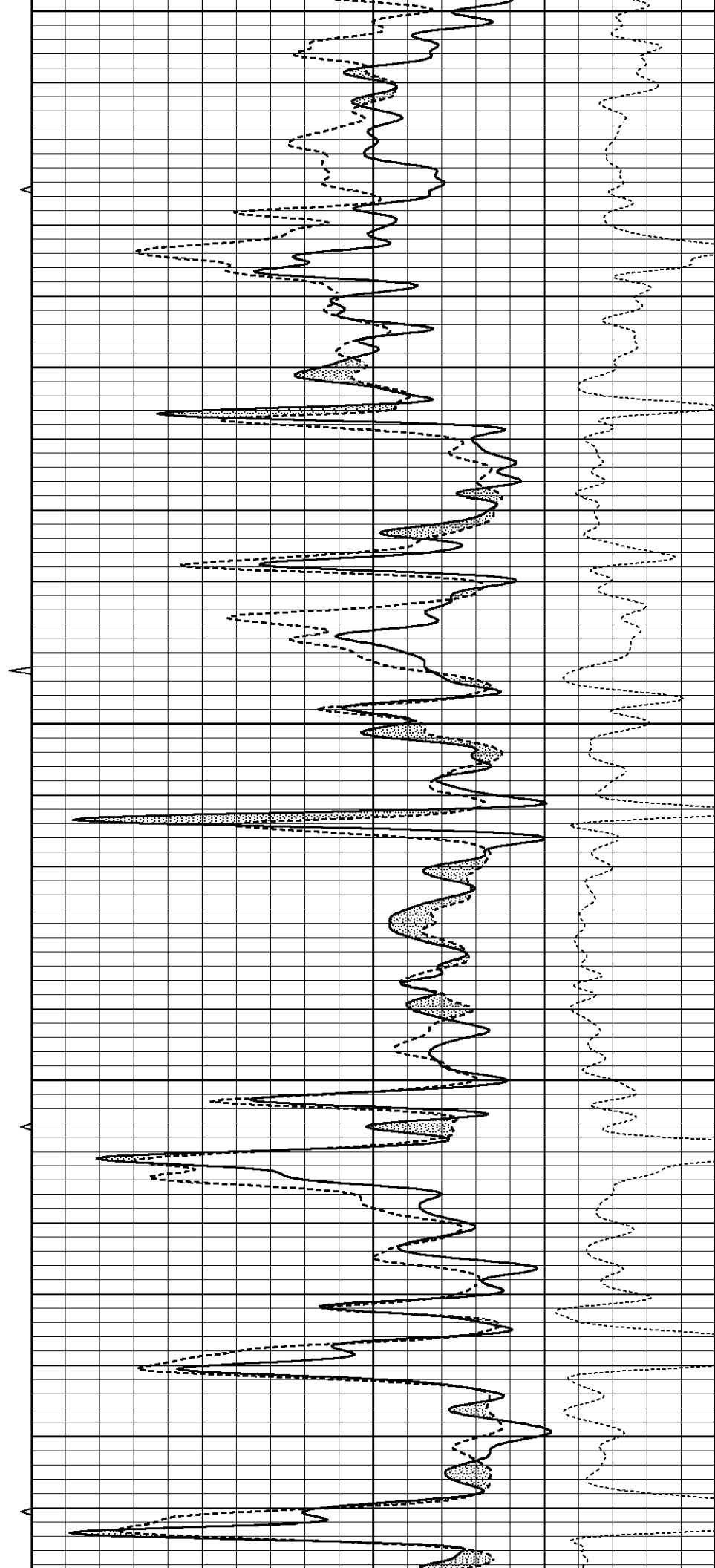
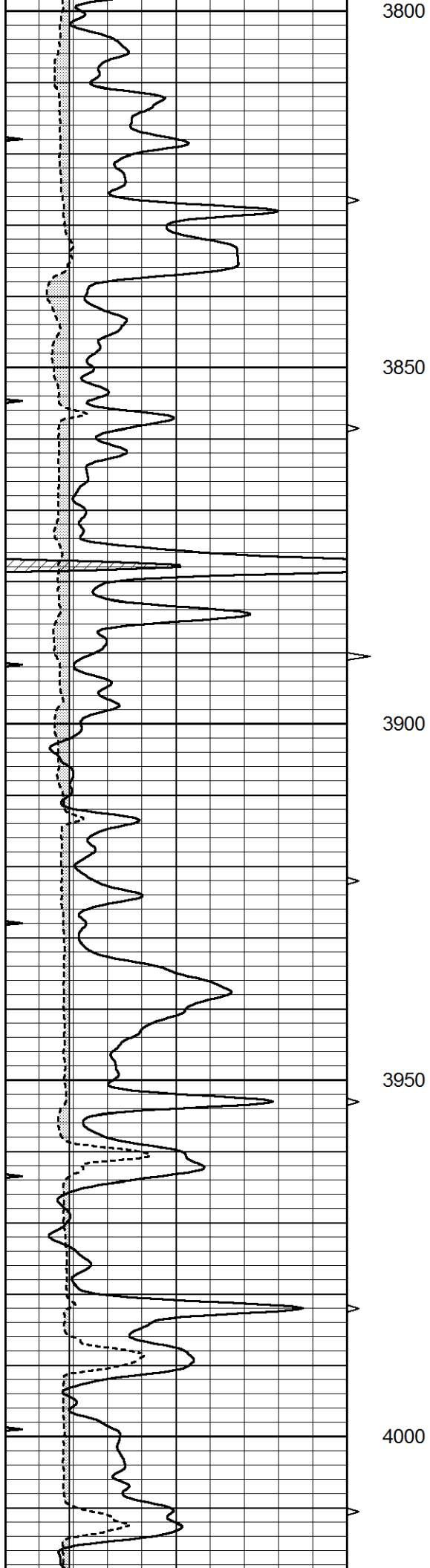
MAIN SECTION

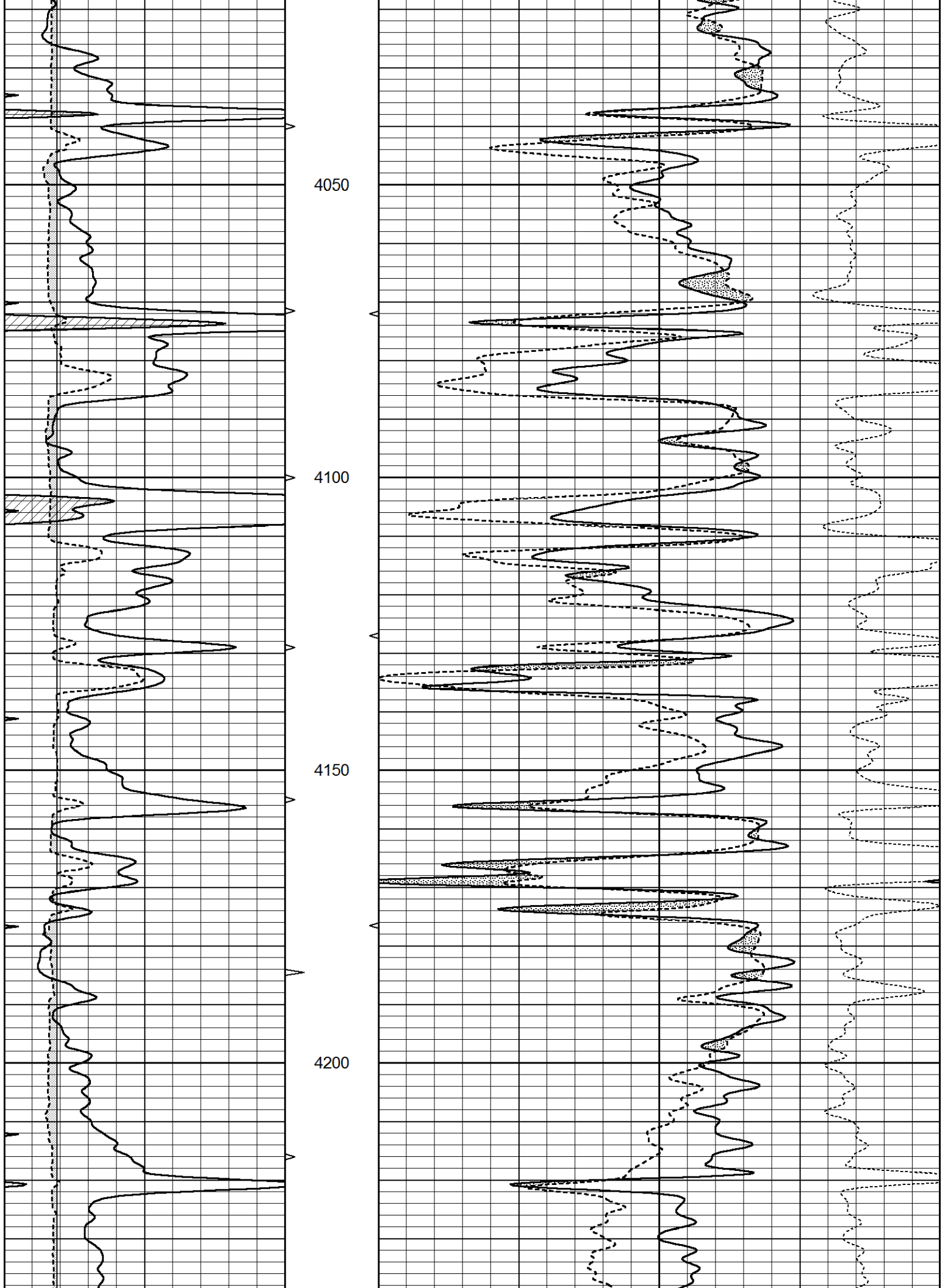
Database File 5641ddn.db
 Dataset Pathname pass3.1
 Presentation Format _den_neu
 Dataset Creation Thu Aug 12 12:19:11 2021
 Charted by Depth in Feet scaled 1:240

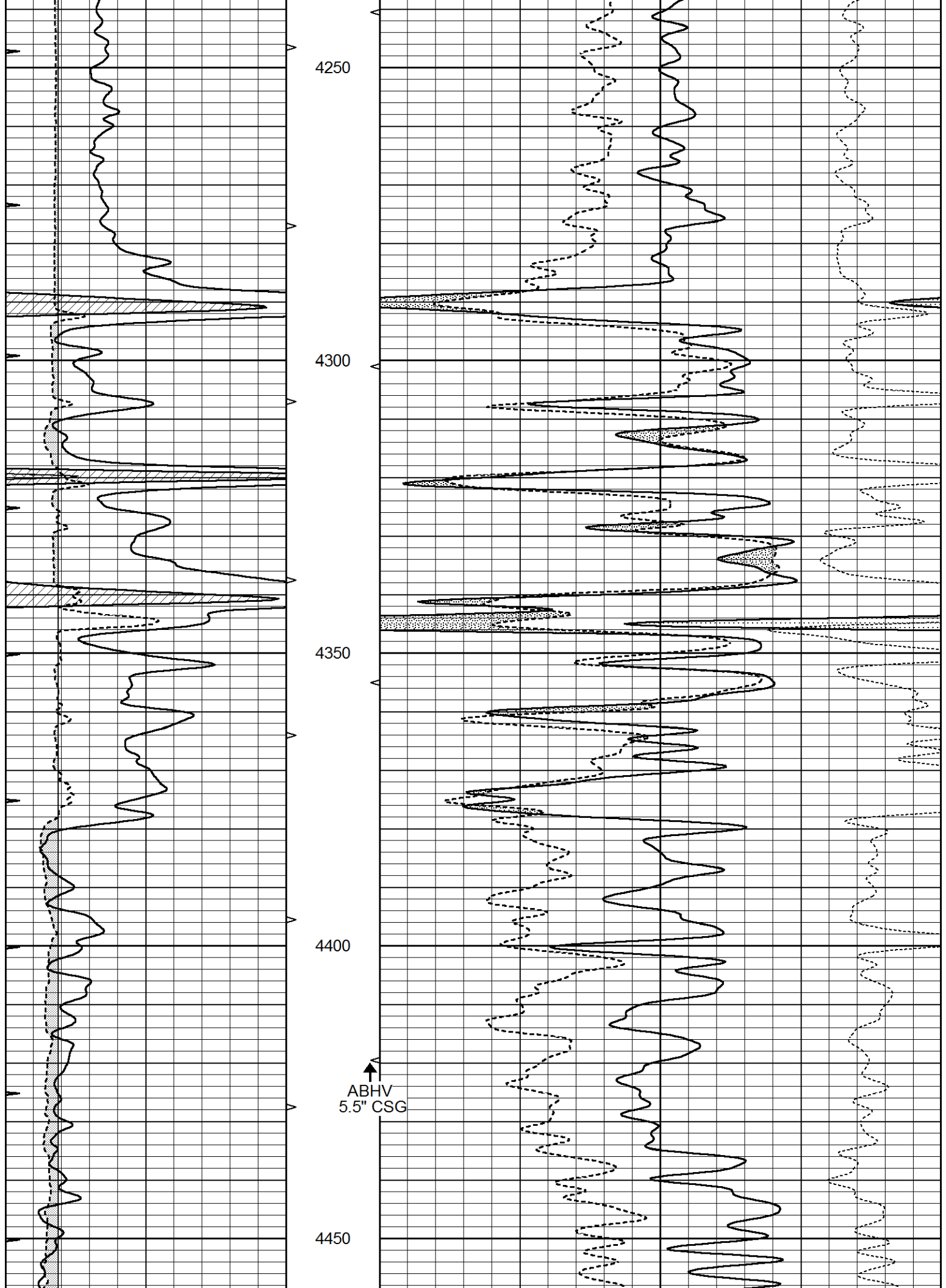
0	GAMMA RAY (GAPI)	150	AVTX	30	COMPENSATED DENSITY (pu)	-10
0	MINMK	20	10 (ft3) 0	30	COMPENSATED NEUTRON (pu)	-10
6	CALIPER (in)	16	BVTX		-0.25 CORRECTION (g/cc)	0.25
			0 (ft3) 10			











4250

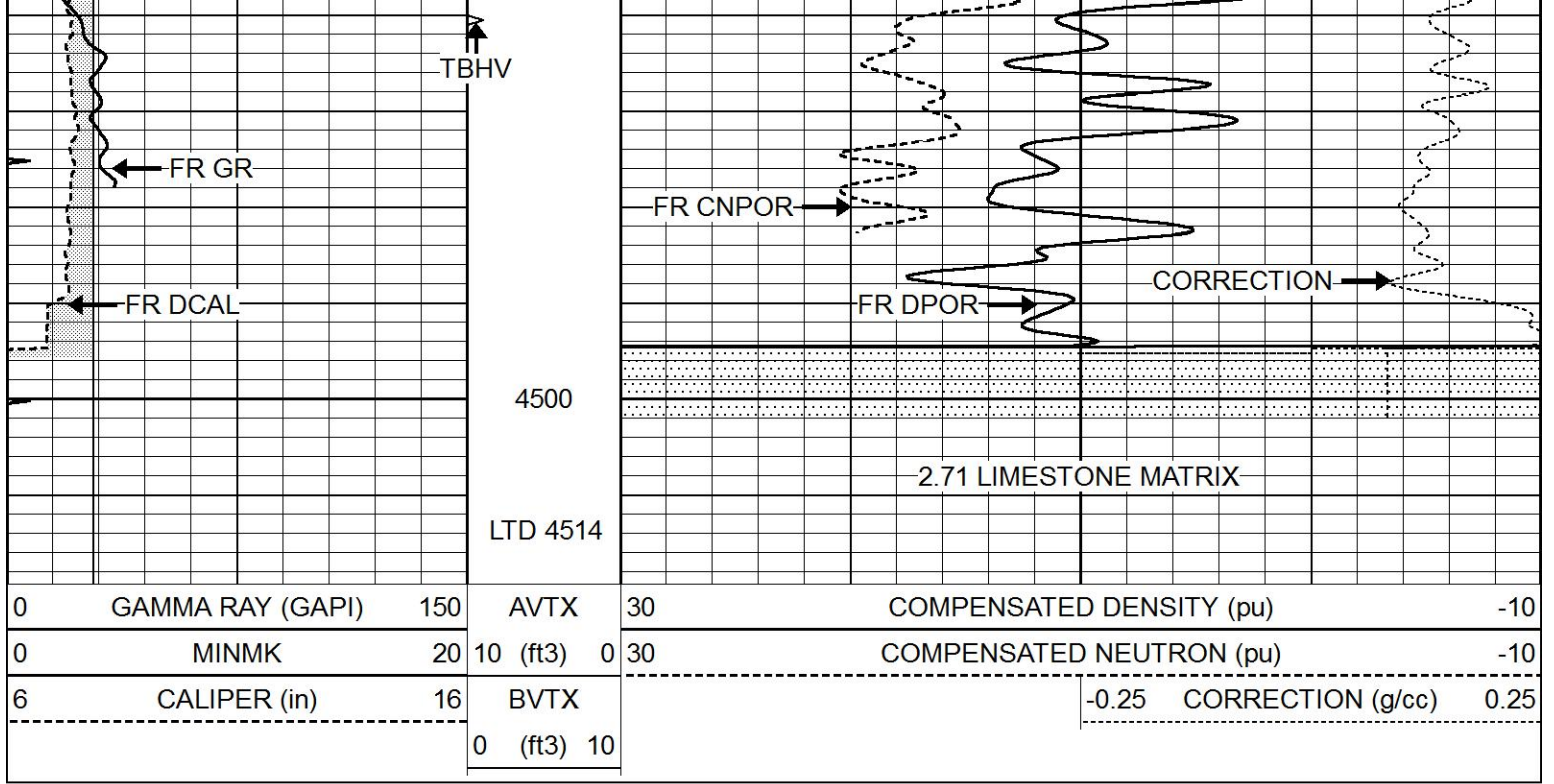
4300

4350

4400

4450

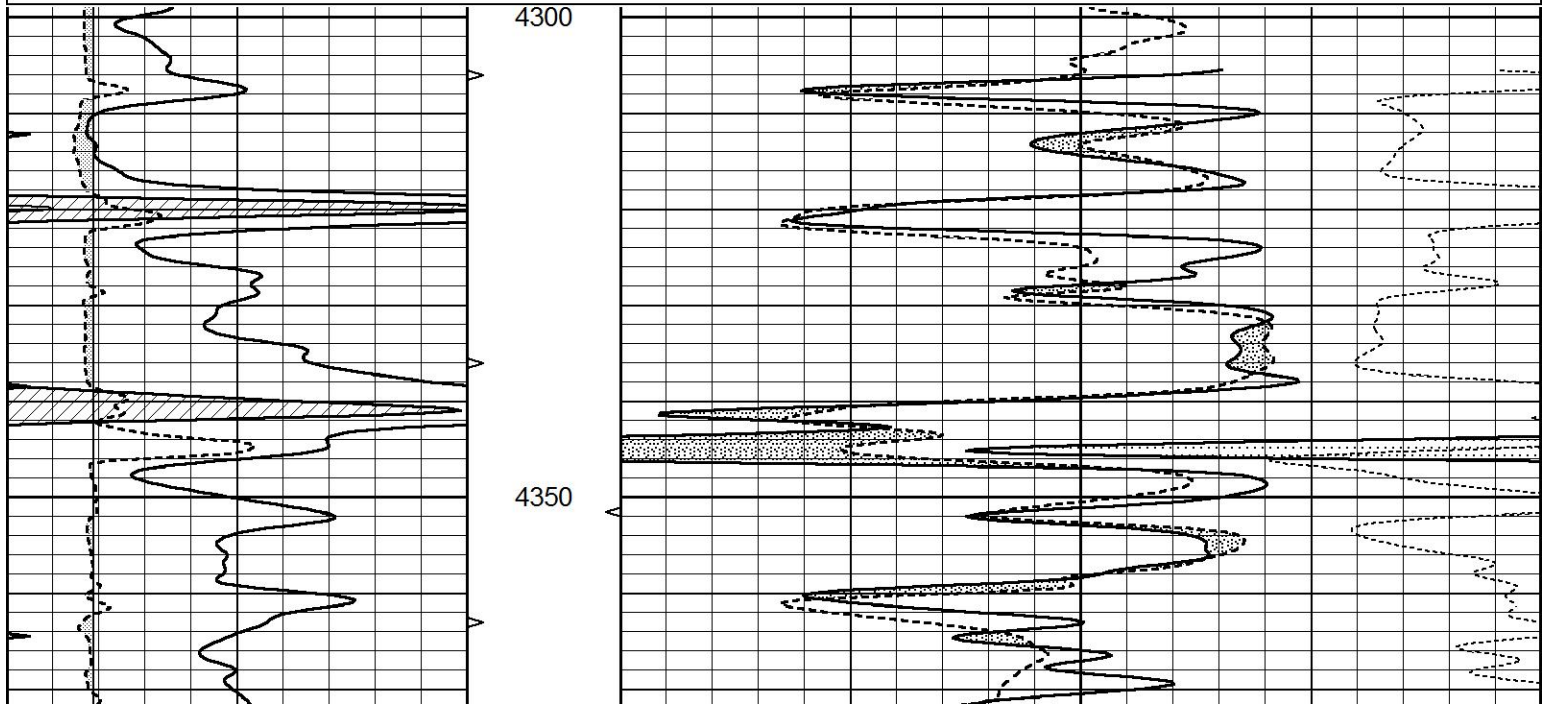
ABHV
5.5" CSG

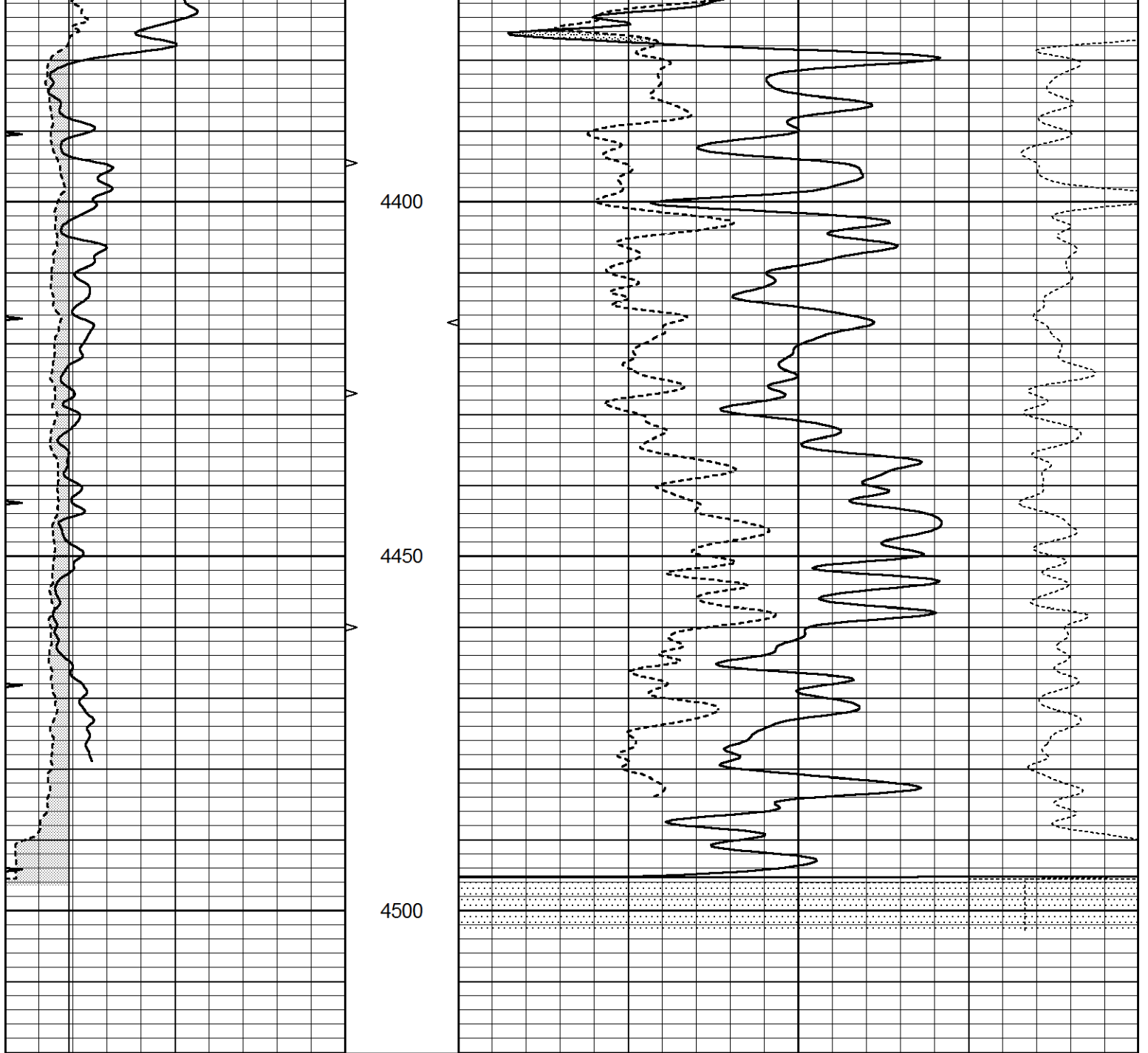


REPEAT SECTION

Database File 5641ddn.db
 Dataset Pathname pass2.1
 Presentation Format _den_neu
 Dataset Creation Thu Aug 12 12:03:44 2021
 Charted by Depth in Feet scaled 1:240

0	GAMMA RAY (GAPI)	150	AVTX	30	COMPENSATED DENSITY (pu)	-10
0	MINMK	20	10 (ft3) 0	30	COMPENSATED NEUTRON (pu)	-10
6	CALIPER (in)	16	BVTX		-0.25 CORRECTION (g/cc)	0.25
			0 (ft3) 10			





0	GAMMA RAY (GAPI)	150	AVTX	30	COMPENSATED DENSITY (pu)	-10
0	MINMK	20	10 (ft3) 0	30	COMPENSATED NEUTRON (pu)	-10
6	CALIPER (in)	16	BVTX		-0.25 CORRECTION (g/cc)	0.25
			0 (ft3) 10			

Calibration Report

Database File 5641ddn.db
 Dataset Pathname pass2.1
 Dataset Creation Thu Aug 12 12:03:44 2021

Dual Induction Calibration Report

Serial-Model: FW1410-55-Probe
 Surface Cal Performed: Tue Feb 19 11:44:18 2019
 Downhole Cal Performed: Tue Feb 19 11:44:24 2019
 After Survey Verification Performed: Tue Feb 19 11:44:27 2019

Surface Calibration

Readings

References

Results

Loop:	Readings			References			Results	
	Air	Loop		Air	Loop		m	b
Deep	0.011	0.656	V	1.000	400.000	mmho/m	618.595	-5.524
Medium	-0.000	0.731	V	1.000	464.000	mmho/m	632.856	1.197
Internal:	Zero	Cal		Zero	Cal		m	b
Deep	0.007	0.649	V	0.000	400.000	mmho/m	623.784	-4.595
Medium	0.004	0.743	V	0.000	464.000	mmho/m	627.284	-2.251

Downhole Calibration								
	Readings			References			Results	
	Zero	Cal		Zero	Cal		m'	b'
Deep	-0.824	395.917	mmho/m	-0.976	397.550	mmho/m	1.004	-0.149
Medium	3.565	471.327	mmho/m	3.468	471.590	mmho/m	1.001	-0.099
LL3		7.503	V		1500.000	Ohm-m		
		0.001	V		20.000	Ohm-m		
		-7.481	V		3745.000	mmho-m		

After Survey Verification								
	Readings			Targets			Results	
	Zero	Cal		Zero	Cal		m'	b'
Deep	0.000	0.000	mmho/m	-0.824	395.917	mmho/m	1.000	0.000
Medium	0.000	0.000	mmho/m	3.565	471.327	mmho/m	1.000	0.000
LL3		0.000	Ohm-m		1500.000	Ohm-m		
		0.000	Ohm-m		20.000	Ohm-m		
		0.000	mmho-m		3745.000	mmho-m		

Litho Density Calibration Report
Serial: 140703
Model: V4_10P
Source Number: 74GBq-19

Master Calibration				Performed: Wed Dec 02 12:04:44 2020	
	Background	Aluminum	Magnesium		
Window 1	595.38	5386.50	23898.92	cps	
Window 2	52.78	1248.21	5993.75	cps	
Window 4	251.36	1200.30	5155.55	cps	
Window 5	545.15	9066.30	17240.12	cps	
Window 6	43.35	1491.73	2929.24	cps	
Window 8	258.76	2917.82	5450.26	cps	
Bulk Density	-	2.6020	1.6830	g/cc	
Pe	-	3.0000	2.5070	b/e	
LS Alpha:	: -1.8726	SS Alpha:	: -0.7656	LS CPE:	: 1.0742
LS Beta:	: 127345.0723	SS Beta:	: 20293.3834	SS CPE:	: 1.5427

Before Survey Background Counts Verification			Performed: Wed Dec 31 18:00:00 1969	
Window 1	0.00	cps		
Window 2	0.00	cps		
Window 4	0.00	cps		
Window 5	0.00	cps		
Window 6	0.00	cps		
Window 8	0.00	cps		

Window 1	0.00	cps
Window 2	0.00	cps
Window 4	0.00	cps
Window 5	0.00	cps
Window 6	0.00	cps
Window 8	0.00	cps

Lithodensity Caliper Calibration

Performed: Wed Dec 02 12:04:44 2020

Results		Readings		References (in)		Gain	Offset
Low	High	Low	High				
8005.3	11087.2	8.0	14.0			0.0	-7.5

Before Survey Caliper Verification

Performed:

	Reference	Reading
Caliper (in)	_____	_____

After Survey Caliper Verification

Performed:

	Reference	Reading
Caliper (in)	_____	_____

Compensated Neutron Calibration Report

Serial Number: 080621PMC
Tool Model: NABORS

PRE-SURVEY VERIFICATION

Detector	Readings	Measured	Target
Short Space	cps		
Long Space	cps	pu	pu

POST-SURVEY VERIFICATION

Detector	Readings	Measured	Target
Short Space	cps		
Long Space	cps	pu	pu

Gamma Ray Calibration Report

Serial Number: 7
Tool Model: Probe1
Performed: Tue Jan 19 17:50:08 2021

Calibrator Value: 1.0 GAPI

Background Reading: 0.0 cps
Calibrator Reading: 1.0 cps

Sensitivity: 0.5300 GAPI/cps