



**COMPENSATED
DENSITY/NEUTRON
LOG**

Company MAI OIL OPERATIONS, INC.
Well J.A. STICE #12
Field WEBSTER
County ROOKS State KANSAS

Location: API #: 15-163-24435-0000
1925' FSL & 1672' FEL
NW-SE-NW-SE
SEC 27 TWP 8S RGE 19W
Permanent Datum GROUND LEVEL Elevation 1955
Log Measured From KELLY BUSHING 10' A.G.L.
Drilling Measured From KELLY BUSHING
Other Services DILMEL
Elevation
K.B. 1965
D.F. 1963
G.L. 1955

Date	9/18/21
Run Number	ONE
Depth Driller	3401
Depth Logger	3402
Bottom Logged Interval	3378
Top Log Interval	2800
Casing Driller	8 5/8" @ 263
Casing Logger	263
Bit Size	7 7/8
Type Fluid in Hole	CHEMICAL MUD
Density / Viscosity	9.4/60
pH / Fluid Loss	11.0/6.0
Source of Sample	FLOWLINE
Rm @ Meas. Temp	.65 @ 80F
Rmf @ Meas. Temp	.48 @ 80F
Rmc @ Meas. Temp	.78 @ 80F
Source of Rmf / Rmc	MEASUREMENT
Rm @ BHT	.46 @ 111F
Time Circulation Stopped	2 HOURS
Time Logger on Bottom	////
Maximum Recorded Temperature	111F
Equipment Number	3802
Location	HAYS, KANSAS
Recorded By	JASON CAPPELLUCCI
Witnessed By	JIM MUSGROVE

<<< Fold Here >>>

All interpretations are opinions based on inferences from electrical or other measurements and we cannot and do not guarantee the accuracy or correctness of any interpretation, and we shall not, except in the case of gross or willful negligence on our part, be liable or responsible for any loss, costs, damages, or expenses incurred or sustained by anyone resulting from any interpretation made by any of our officers, agents or employees. These interpretations are also subject to our general terms and conditions set out in our current Price Schedule.

Comments

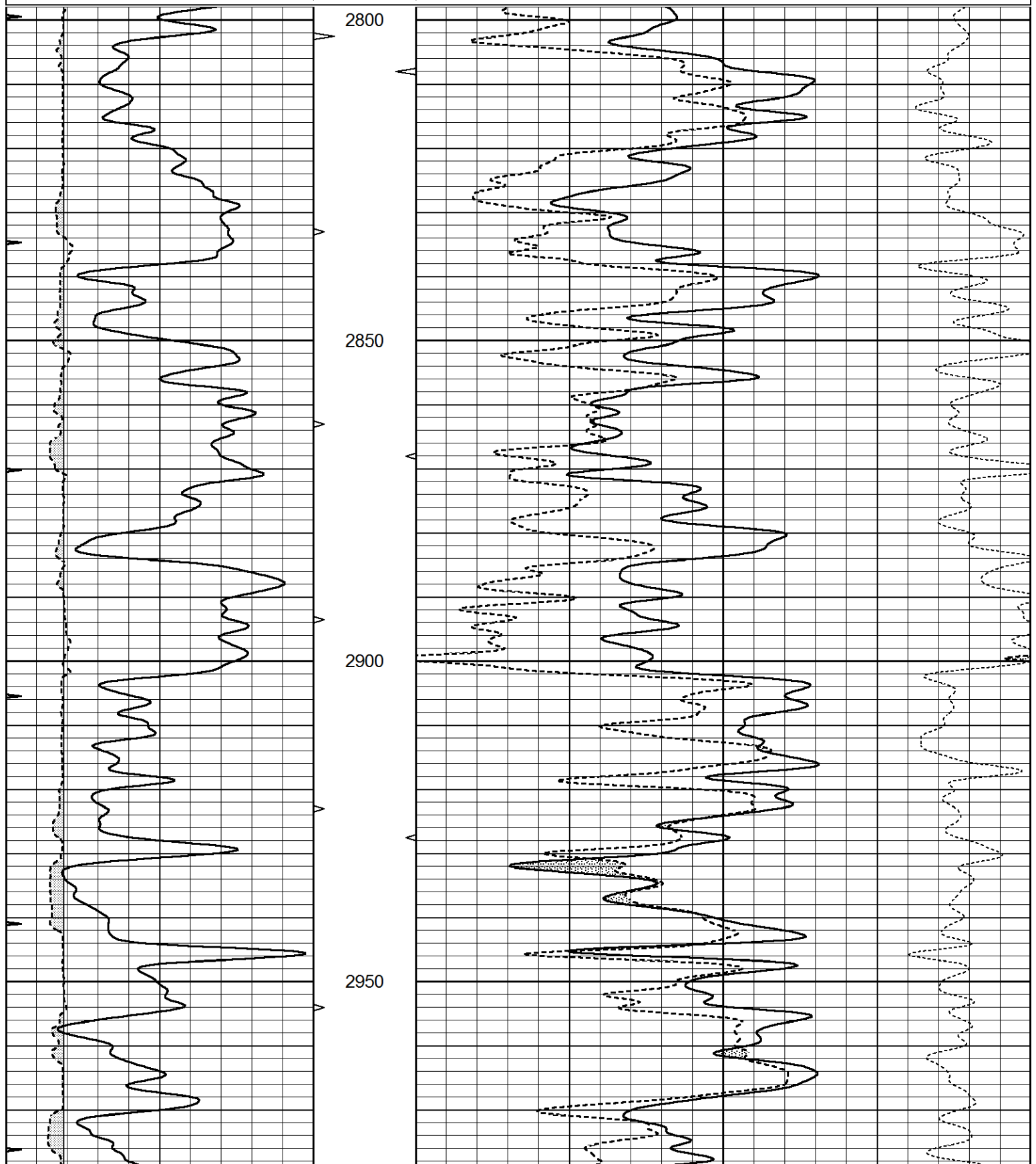
THANK YOU FOR USING ELI WIRELINE SERVICES, HAYS, KS. (785) 628-6395
DIRECTIONS
PLAINVILLE, KS. - 6 NORTH TO RD. R - 6 1/2 WEST - 1/2 NORTH - EAST INTO

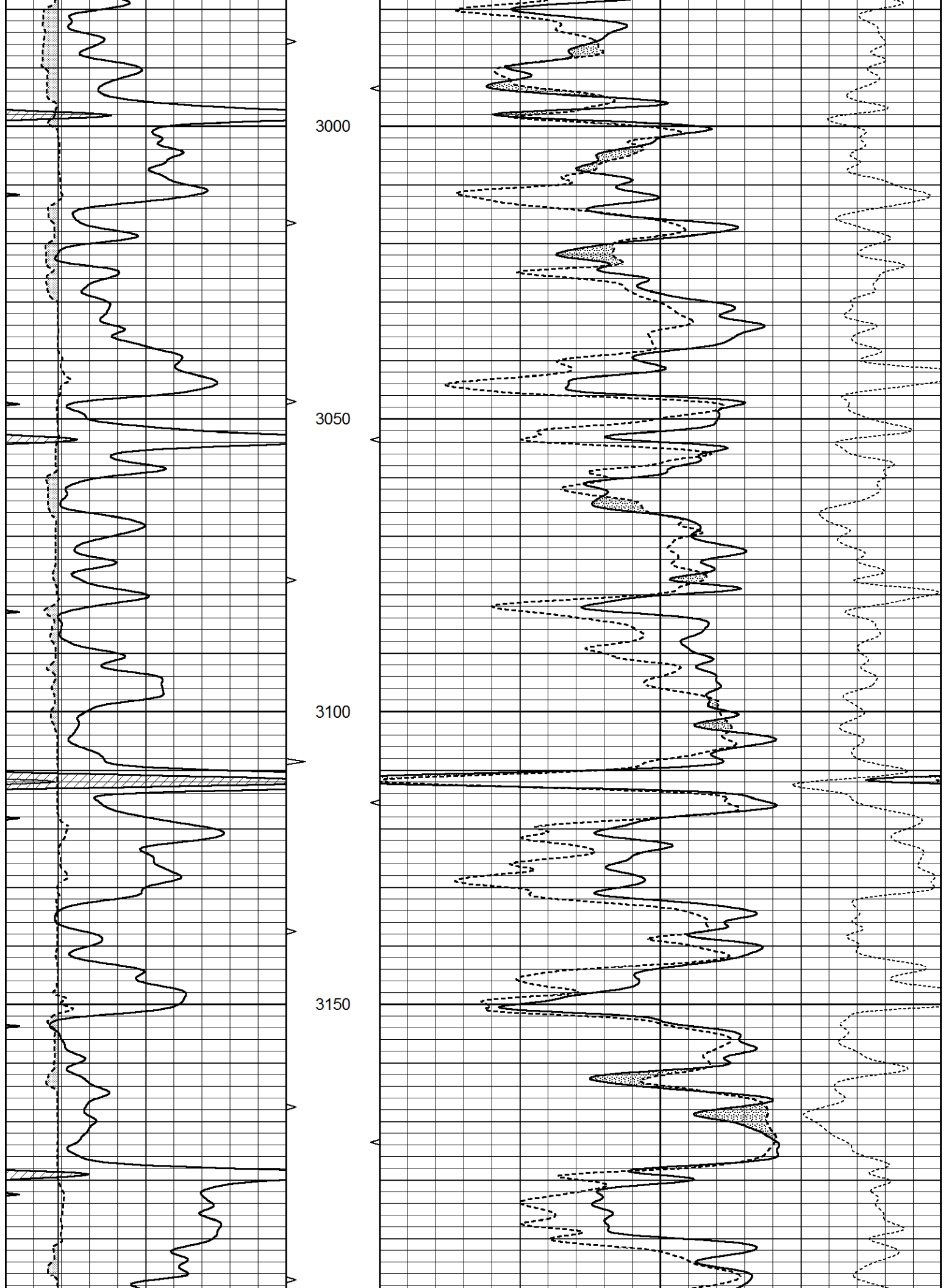


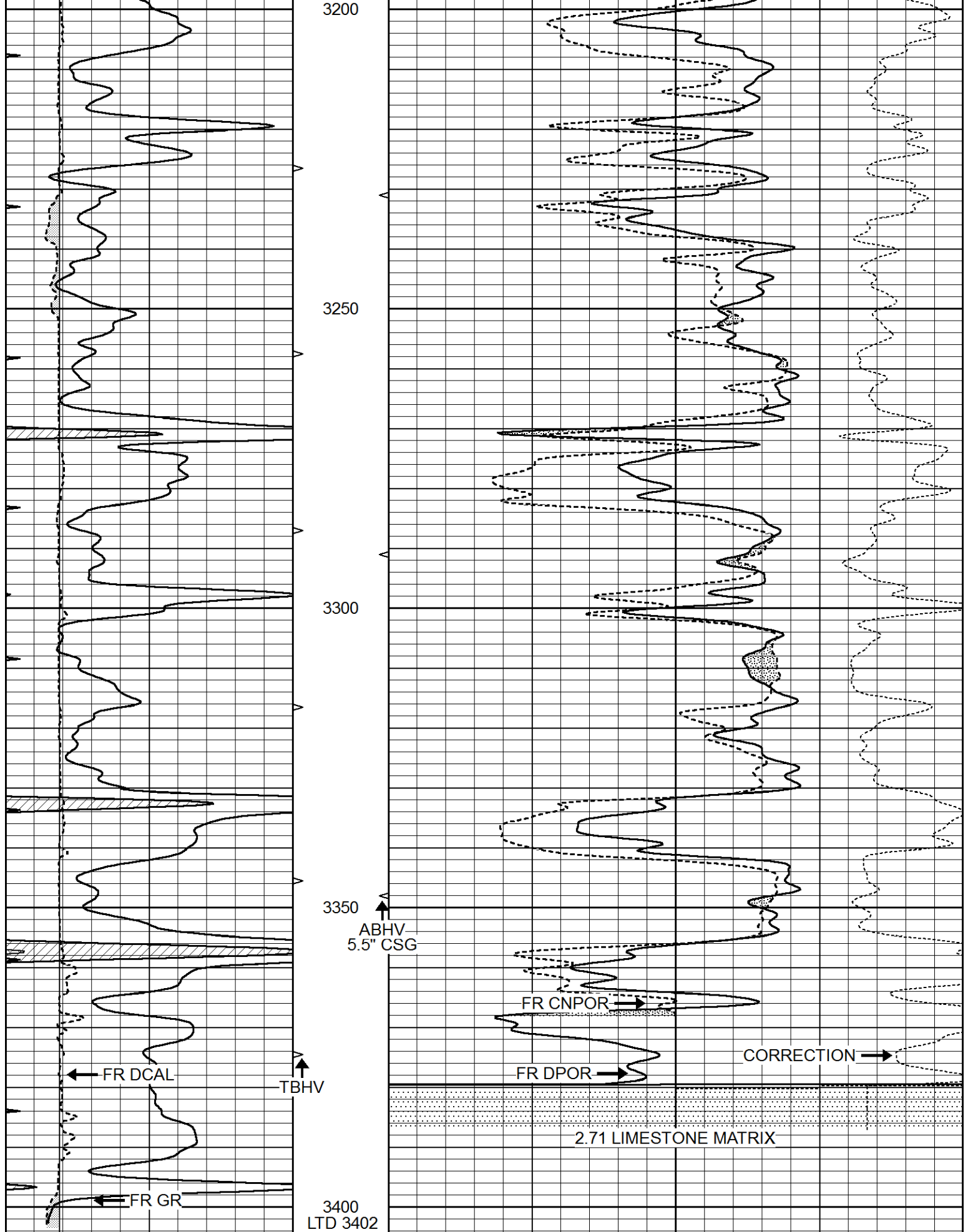
MAIN SECTION

Database File 5855ddn.db
 Dataset Pathname pass3.1
 Presentation Format _den_neu
 Dataset Creation Sat Sep 18 23:57:07 2021
 Charted by Depth in Feet scaled 1:240

0	GAMMA RAY (GAPI)	150	AVTX	30	COMPENSATED DENSITY (pu)	-10	
6	CALIPER (in)	16	10 (ft3)	0	30	COMPENSATED NEUTRON (pu)	-10
0	MINMK	20	BVTX			-0.25 CORRECTION (g/cc)	0.25
			0 (ft3)	10			







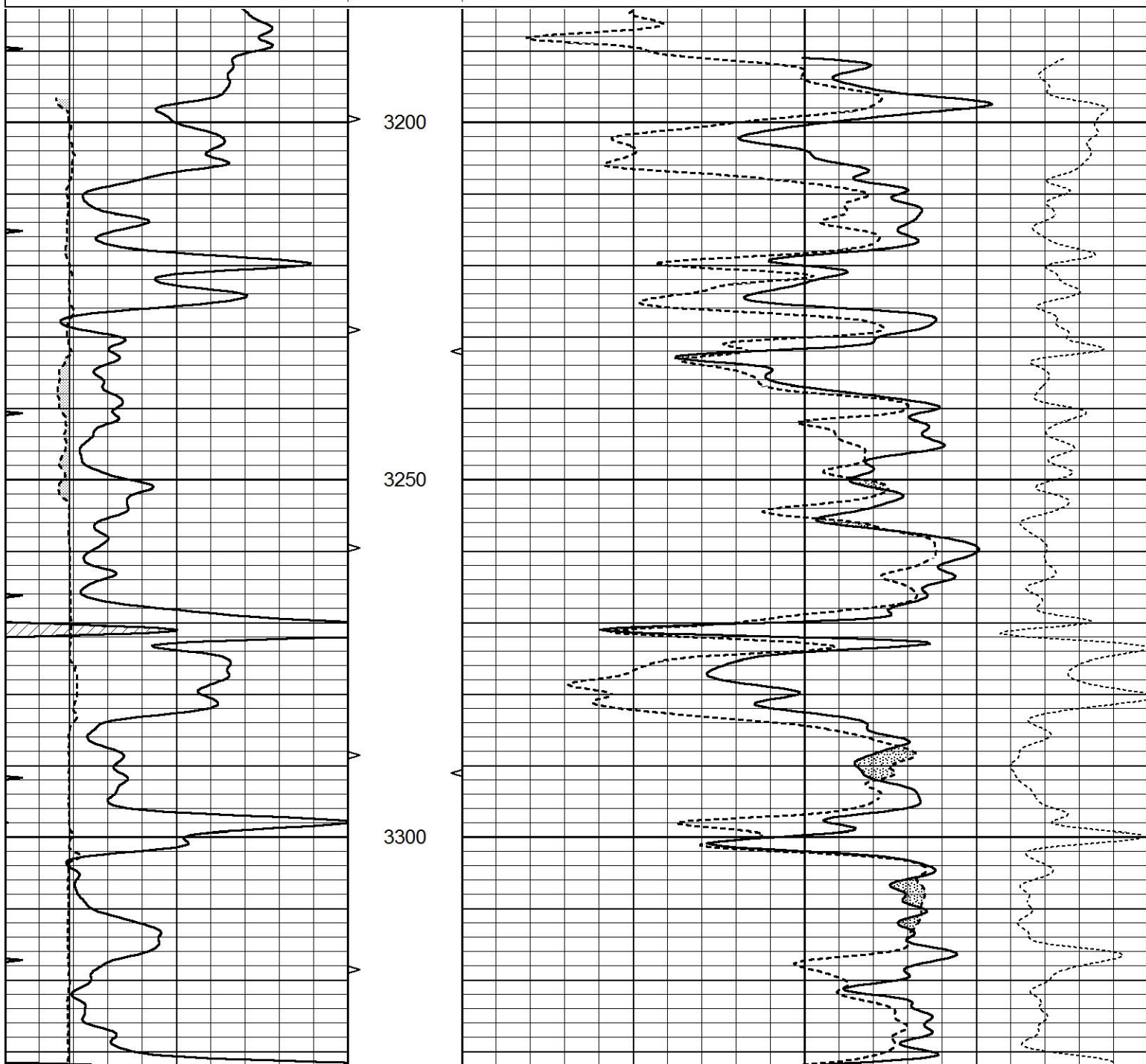
0	GAMMA RAY (GAPI)	150	AVTX	30	COMPENSATED DENSITY (pu)	-10
6	CALIPER (in)	16	10 (ft3)	0 30	COMPENSATED NEUTRON (pu)	-10
0	MINMK	20	BVTX		-0.25 CORRECTION (g/cc)	0.25

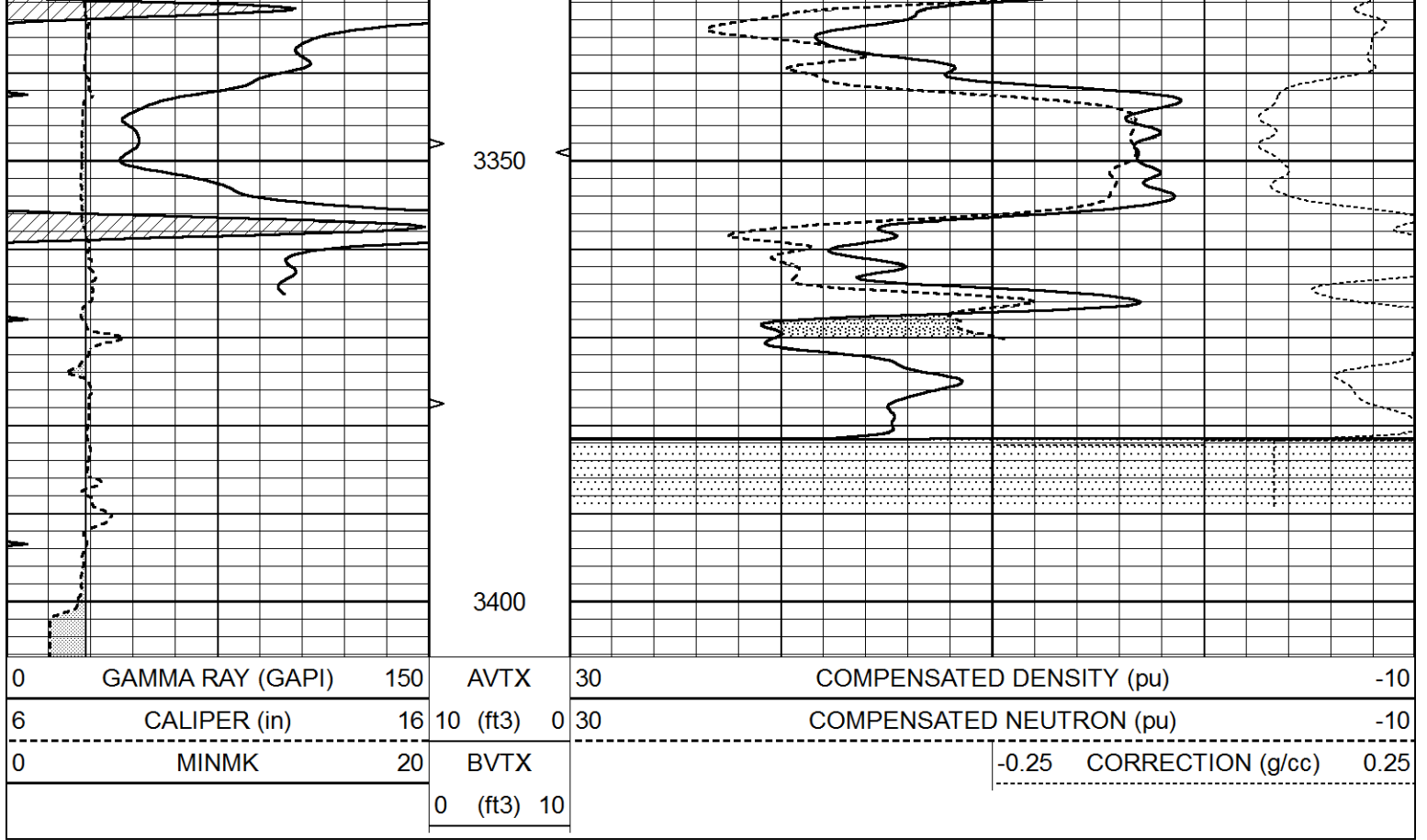


REPEAT SECTION

Database File 5855ddn.db
 Dataset Pathname pass2.1
 Presentation Format _den_neu
 Dataset Creation Sat Sep 18 23:55:20 2021
 Charted by Depth in Feet scaled 1:240

0	GAMMA RAY (GAPI)	150	AVTX	30	COMPENSATED DENSITY (pu)	-10
6	CALIPER (in)	16	10 (ft3)	0 30	COMPENSATED NEUTRON (pu)	-10
0	MINMK	20	BVTX		-0.25 CORRECTION (g/cc)	0.25
			0 (ft3)	10		





Calibration Report

Database File 5855ddn.db
 Dataset Pathname pass2.1
 Dataset Creation Sat Sep 18 23:55:20 2021

Dual Induction Calibration Report

Serial-Model: FW1410-55-Probe
 Surface Cal Performed: Tue Feb 19 11:44:18 2019
 Downhole Cal Performed: Tue Feb 19 11:44:24 2019
 After Survey Verification Performed: Tue Feb 19 11:44:27 2019

Surface Calibration

Loop:	Readings			References			Results	
	Air	Loop		Air	Loop		m	b
Deep	0.011	0.656	V	1.000	400.000	mmho/m	618.595	-5.524
Medium	-0.000	0.731	V	1.000	464.000	mmho/m	632.856	1.197
Internal:	Zero	Cal		Zero	Cal		m	b
Deep	0.007	0.649	V	0.000	400.000	mmho/m	623.784	-4.595
Medium	0.004	0.743	V	0.000	464.000	mmho/m	627.284	-2.251

Downhole Calibration

	Readings			References			Results	
	Zero	Cal		Zero	Cal		m'	b'
Deep	-0.824	395.917	mmho/m	-0.976	397.550	mmho/m	1.004	-0.149
Medium	3.565	471.327	mmho/m	3.468	471.590	mmho/m	1.001	-0.099
LL3		7.503	V		1500.000	Ohm-m		
		0.001	V		20.000	Ohm-m		
		-7.481	V		3745.000	mmho-m		

After Survey Verification

	Readings			Targets			Results	
	Zero	Cal		Zero	Cal		m'	b'
Deep	0.000	0.000	mmho/m	-0.824	395.917	mmho/m	1.000	0.000
Medium	0.000	0.000	mmho/m	3.565	471.327	mmho/m	1.000	0.000
LL3		0.000	Ohm-m		1500.000	Ohm-m		
		0.000	Ohm-m		20.000	Ohm-m		
		0.000	mmho-m		3745.000	mmho-m		

Litho Density Calibration Report
Serial: 140703
Model: V4_10P
Source Number: 74GBq-19

Master Calibration

Performed: Wed Dec 02 12:04:44 2020

	Background	Aluminum	Magnesium		
Window 1	595.38	5386.50	23898.92	cps	
Window 2	52.78	1248.21	5993.75	cps	
Window 4	251.36	1200.30	5155.55	cps	
Window 5	545.15	9066.30	17240.12	cps	
Window 6	43.35	1491.73	2929.24	cps	
Window 8	258.76	2917.82	5450.26	cps	
Bulk Density	-	2.6020	1.6830	g/cc	
Pe	-	3.0000	2.5070	b/e	
LS Alpha:	: -1.8726	SS Alpha:	: -0.7656	LS CPE:	: 1.0742
LS Beta:	: 127345.0723	SS Beta:	: 20293.3834	SS CPE:	: 1.5427

Before Survey Background Counts Verification

Performed: Wed Dec 31 18:00:00 1969

Window 1	0.00	cps
Window 2	0.00	cps
Window 4	0.00	cps
Window 5	0.00	cps
Window 6	0.00	cps
Window 8	0.00	cps

After Survey Background Counts Verification

Performed: Wed Dec 31 18:00:00 1969

Window 1	0.00	cps
Window 2	0.00	cps
Window 4	0.00	cps
Window 5	0.00	cps
Window 6	0.00	cps
Window 8	0.00	cps

Lithodensity Caliper Calibration

Performed: Wed Dec 02 12:04:44 2020

Results	Readings		References (in)		Gain	Offset
	Low	High	Low	High		
	8005.3	11087.2	8.0	14.0	0.0	-7.5

Before Survey Caliper Verification

Performed:

	Reference	Reading
Caliper (in)		

Caliper (in)

After Survey Caliper Verification

Performed:

Reference

Reading

Caliper (in)

Compensated Neutron Calibration Report

Serial Number: 080621PMC
Tool Model: NABORS

PRE-SURVEY VERIFICATION

Detector	Readings	Measured	Target
Short Space	cps		
Long Space	cps	pu	pu

POST-SURVEY VERIFICATION

Detector	Readings	Measured	Target
Short Space	cps		
Long Space	cps	pu	pu

Gamma Ray Calibration Report

Serial Number: 7
 Tool Model: Probe1
 Performed: Tue Jan 19 17:50:08 2021

Calibrator Value: 1.0 GAPI

Background Reading: 0.0 cps
 Calibrator Reading: 1.0 cps

Sensitivity: 0.5300 GAPI/cps