



DUAL INDUCTION LOG

Company MAI OIL OPERATIONS, INC.

Well J.A. STICE #12

Field WEBSTER

County ROOKS State KANSAS

Location: API #: 15-163-24435-0000

1925' FSL & 1672' FEL
NW-SE-NW-SE

SEC 27 TWP 8S RGE 19W

Permanent Datum GROUND LEVEL Elevation 1955
Log Measured From KELLY BUSHING 10' A.G.L.
Drilling Measured From KELLY BUSHING

Other Services
CDL/CNL
MEL

Elevation

K.B. 1965
D.F. 1963
G.L. 1955

Date	9/18/21
Run Number	ONE
Depth Driller	3401
Depth Logger	3402
Bottom Logged Interval	3400
Top Log Interval	00
Casing Driller	8 5/8" @ 263
Casing Logger	263
Bit Size	7 7/8
Type Fluid in Hole	CHEMICAL MUD
Density / Viscosity	9.4/60
pH / Fluid Loss	11.0/6.0
Source of Sample	FLOWLINE
Rm @ Meas. Temp	.65 @ 80F
Rmf @ Meas. Temp	.48 @ 80F
Rmc @ Meas. Temp	.78 @ 80F
Source of Rmf / Rmc	MEASUREMENT
Rm @ BHT	.46 @ 111F
Time Circulation Stopped	2 HOURS
Time Logger on Bottom	////
Maximum Recorded Temperature	111F
Equipment Number	3802
Location	HAYS, KANSAS
Recorded By	JASON CAPPELLUCCI
Witnessed By	JIM MUSGROVE

<<< Fold Here >>>

All interpretations are opinions based on inferences from electrical or other measurements and we cannot and do not guarantee the accuracy or correctness of any interpretation, and we shall not, except in the case of gross or willful negligence on our part, be liable or responsible for any loss, costs, damages, or expenses incurred or sustained by anyone resulting from any interpretation made by any of our officers, agents or employees. These interpretations are also subject to our general terms and conditions set out in our current Price Schedule.

Comments

THANK YOU FOR USING ELI WIRELINE SERVICES, HAYS, KS. (785) 628-6395
DIRECTIONS
PLAINVILLE, KS. - 6 NORTH TO RD. R - 6 1/2 WEST - 1/2 NORTH - EAST INTO

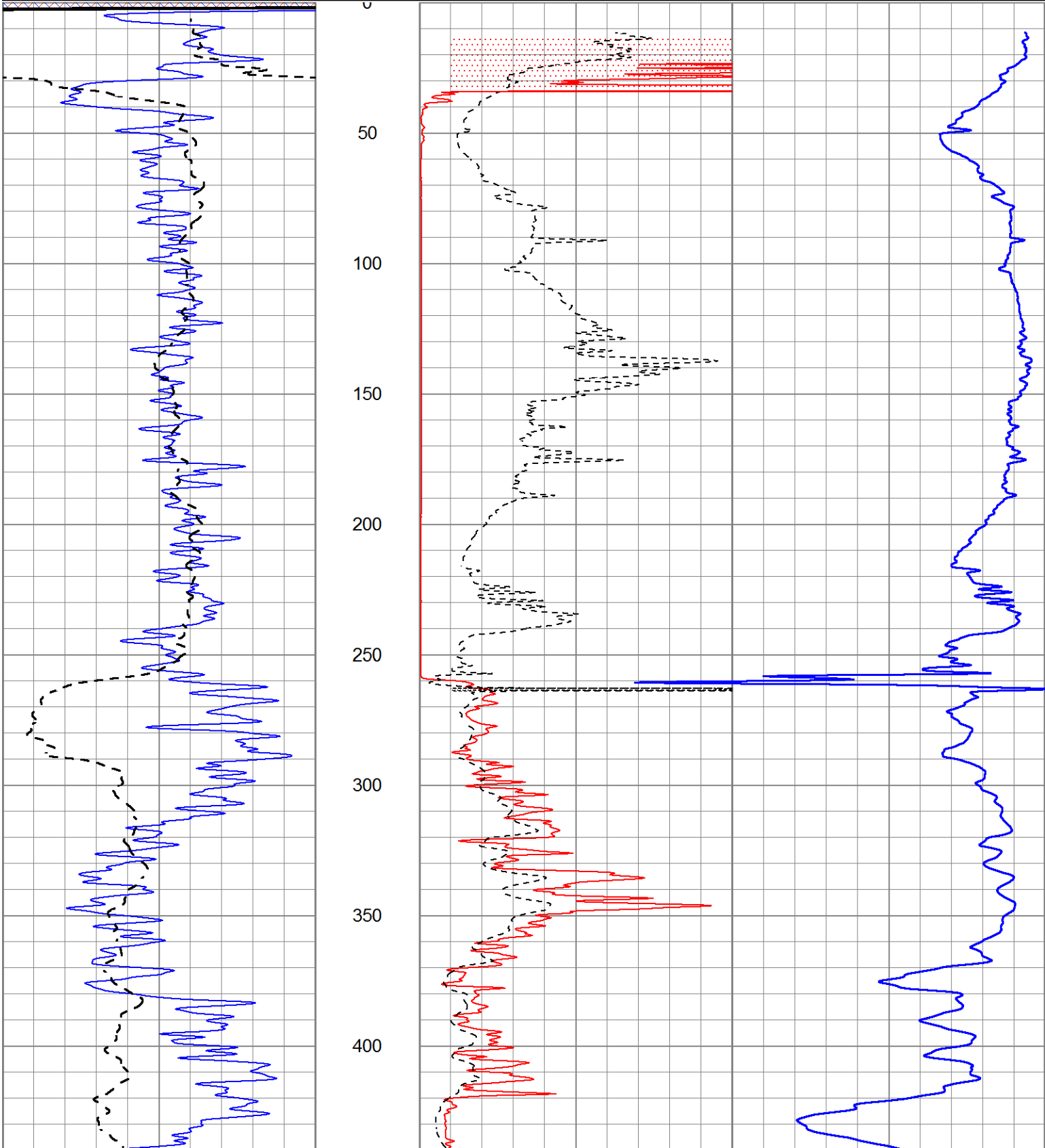


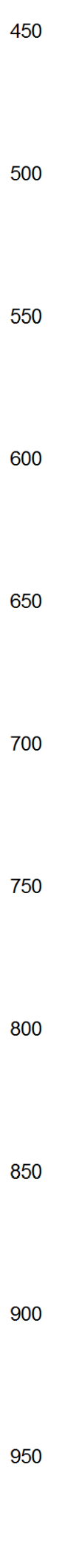
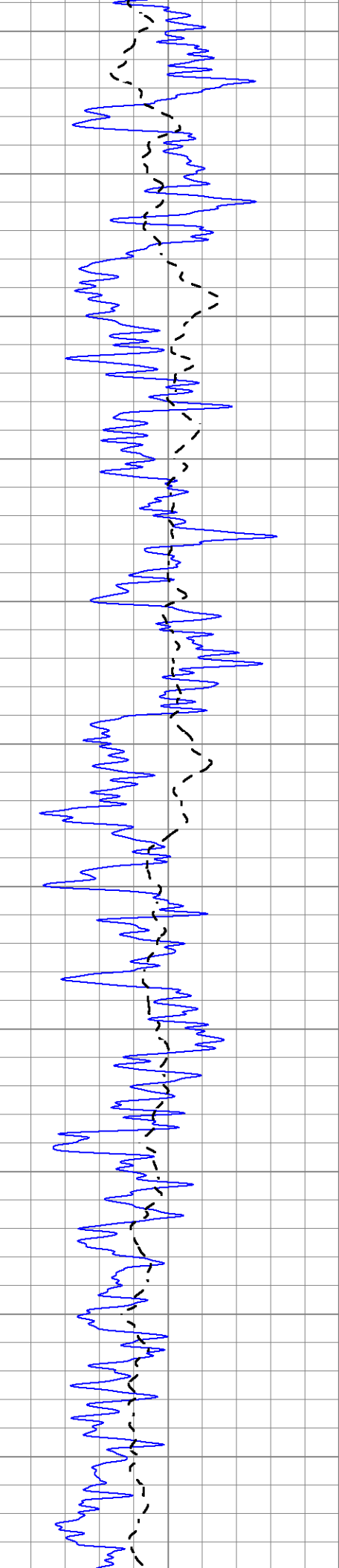
MAIN SECTION

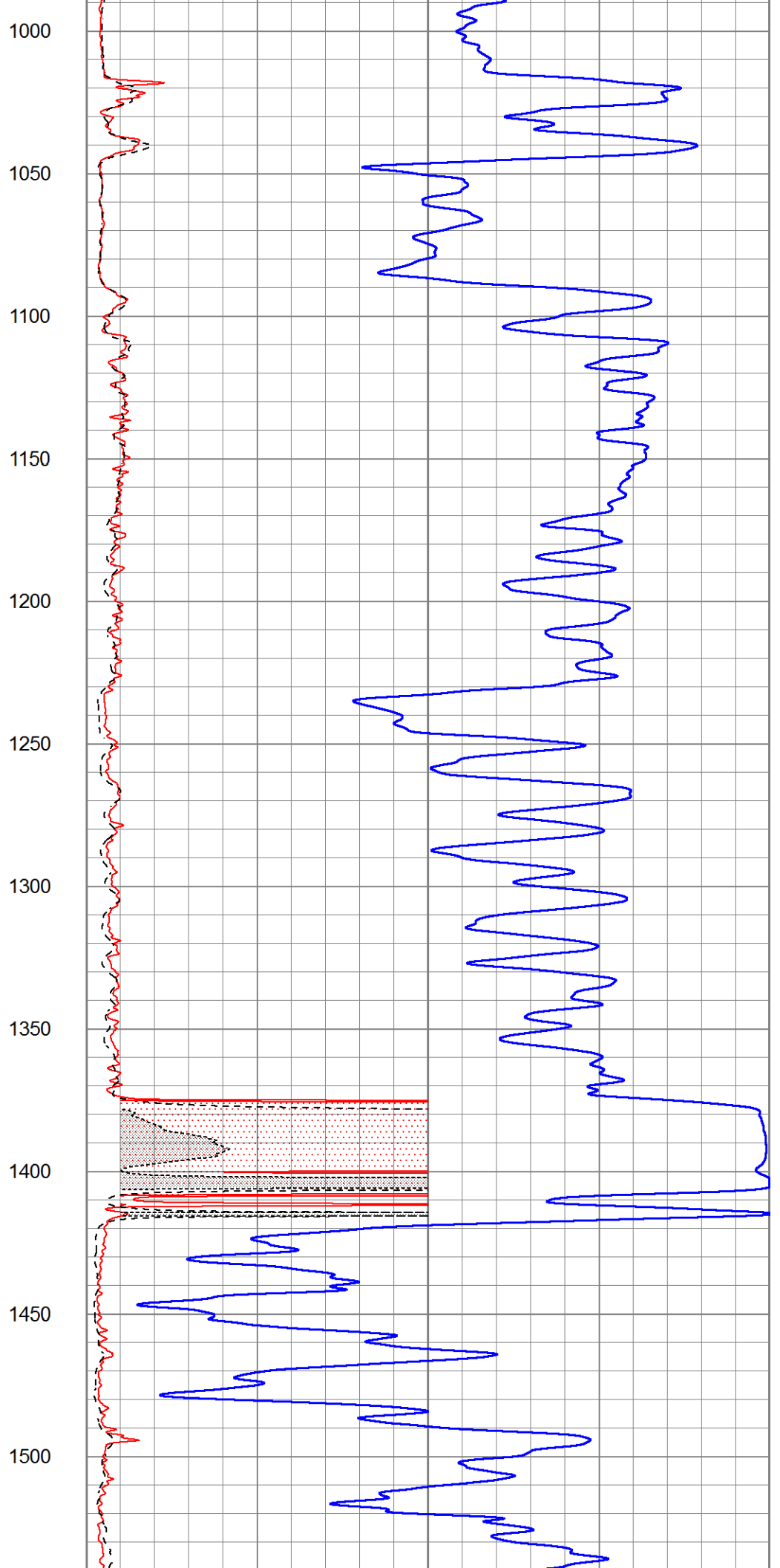
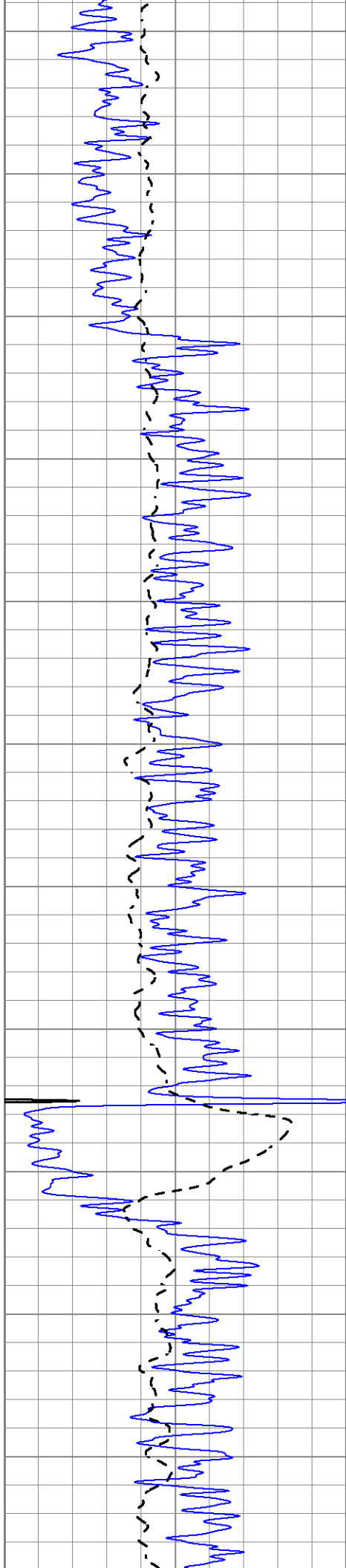
Database File 5855ddn.db
 Dataset Pathname pass3.3
 Presentation Format _dil2
 Dataset Creation Sun Sep 19 01:13:12 2021
 Charted by Depth in Feet scaled 1:600

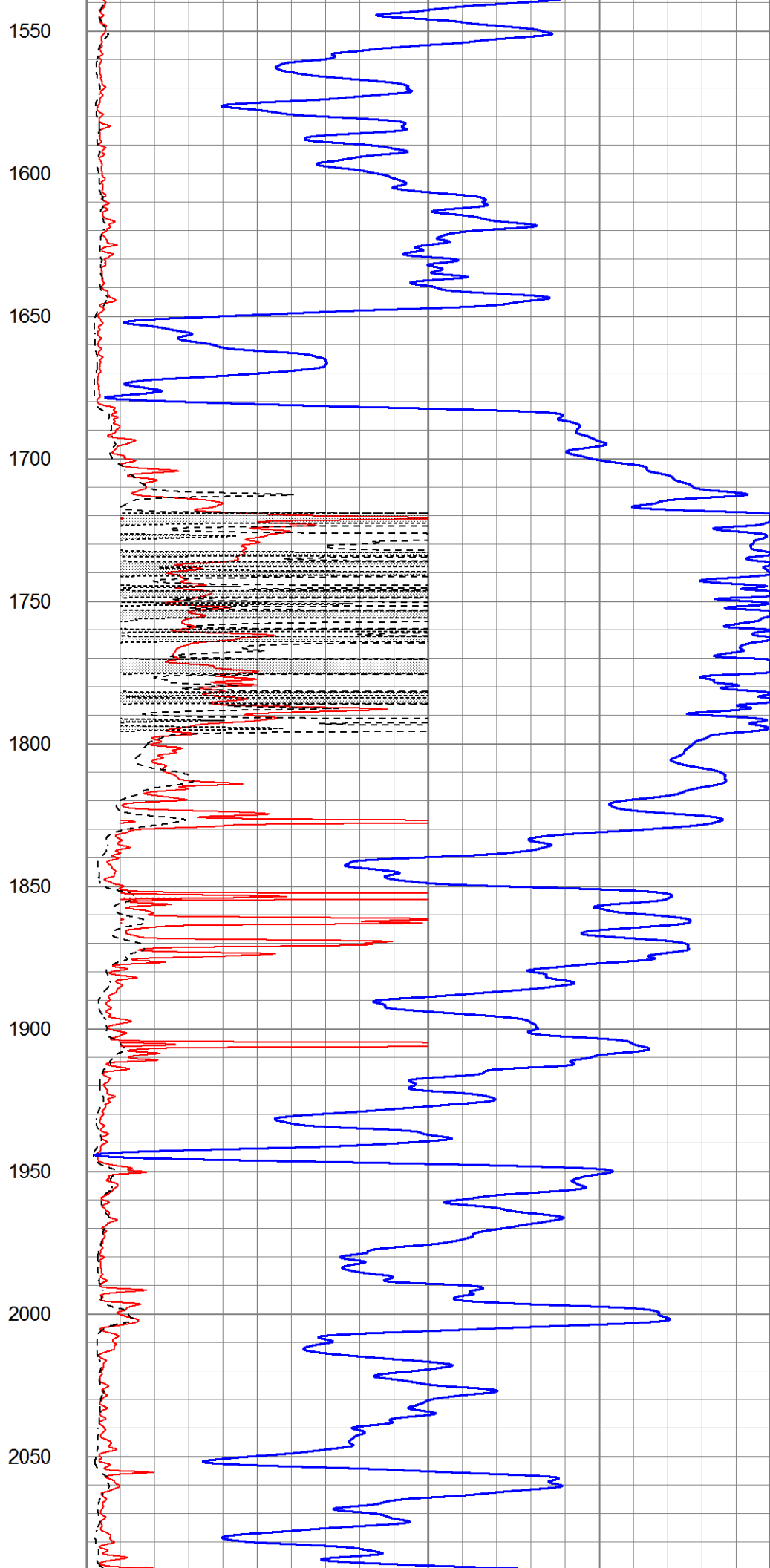
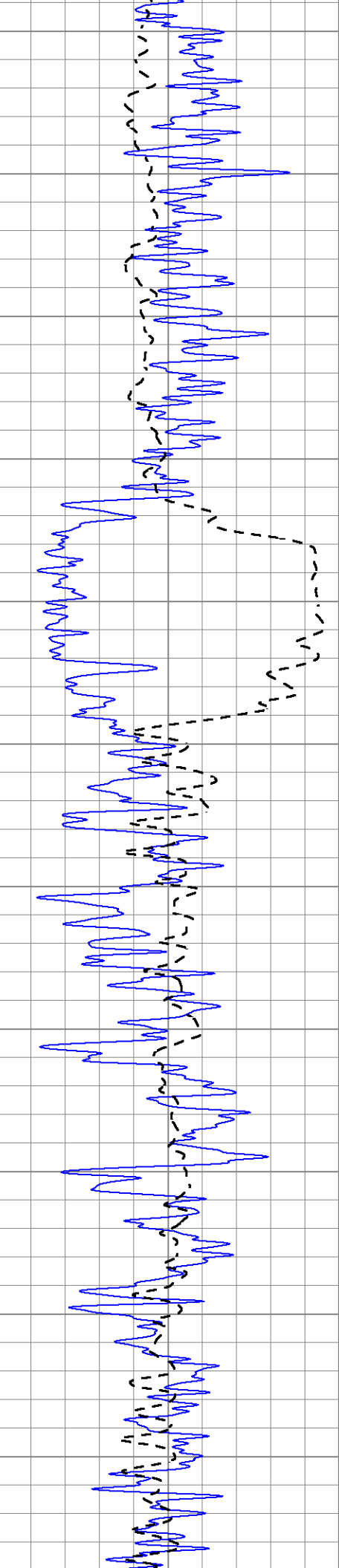
0	Gamma Ray (GAPI)	150
-100	SP (mV)	100

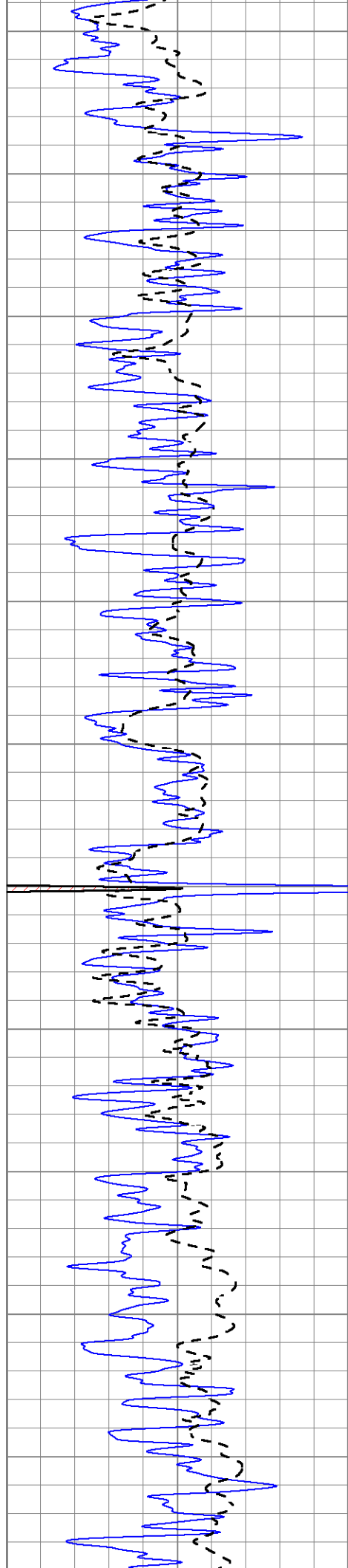
1000	CILD (mmho/m)	0
0	RLL3 (Ohm-m)	50
0	Deep Induction (Ohm-m)	50
50	RILD X10 (Ohm-m)	500
50	RLL3 X10 (Ohm-m)	500











2100

2150

2200

2250

2300

2350

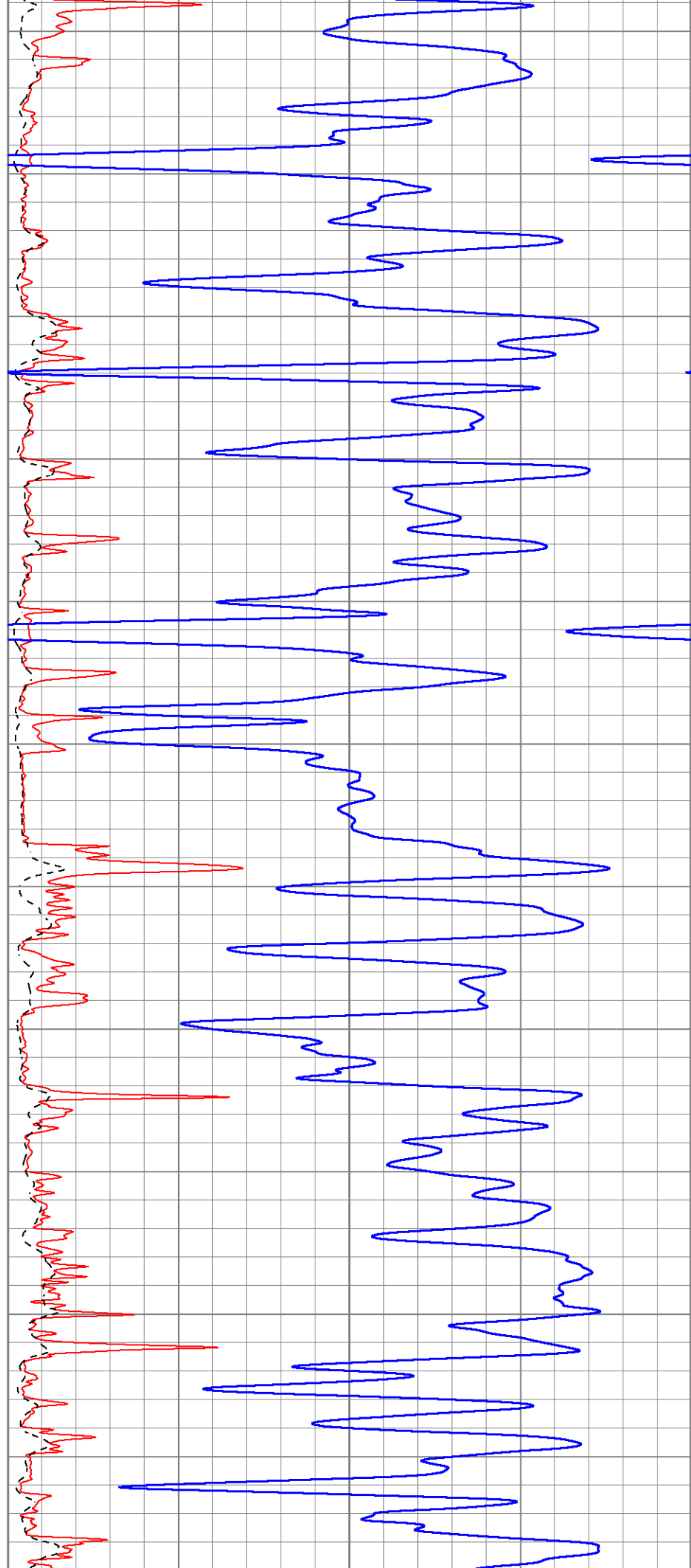
2400

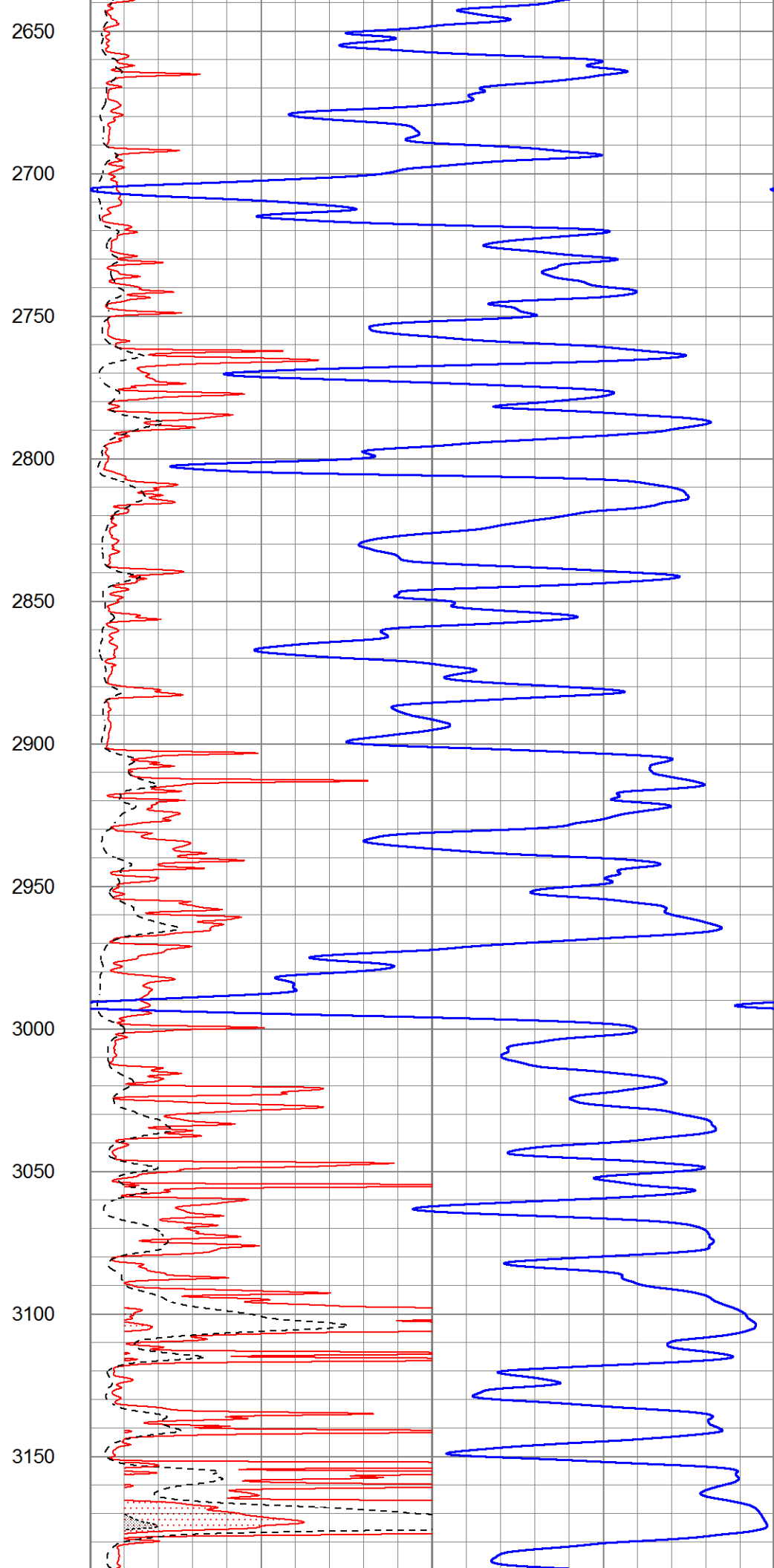
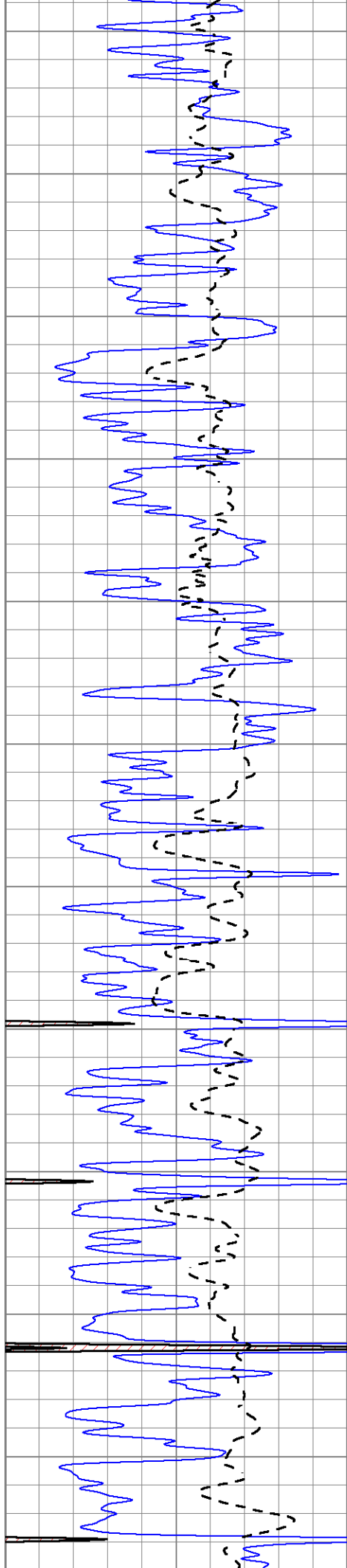
2450

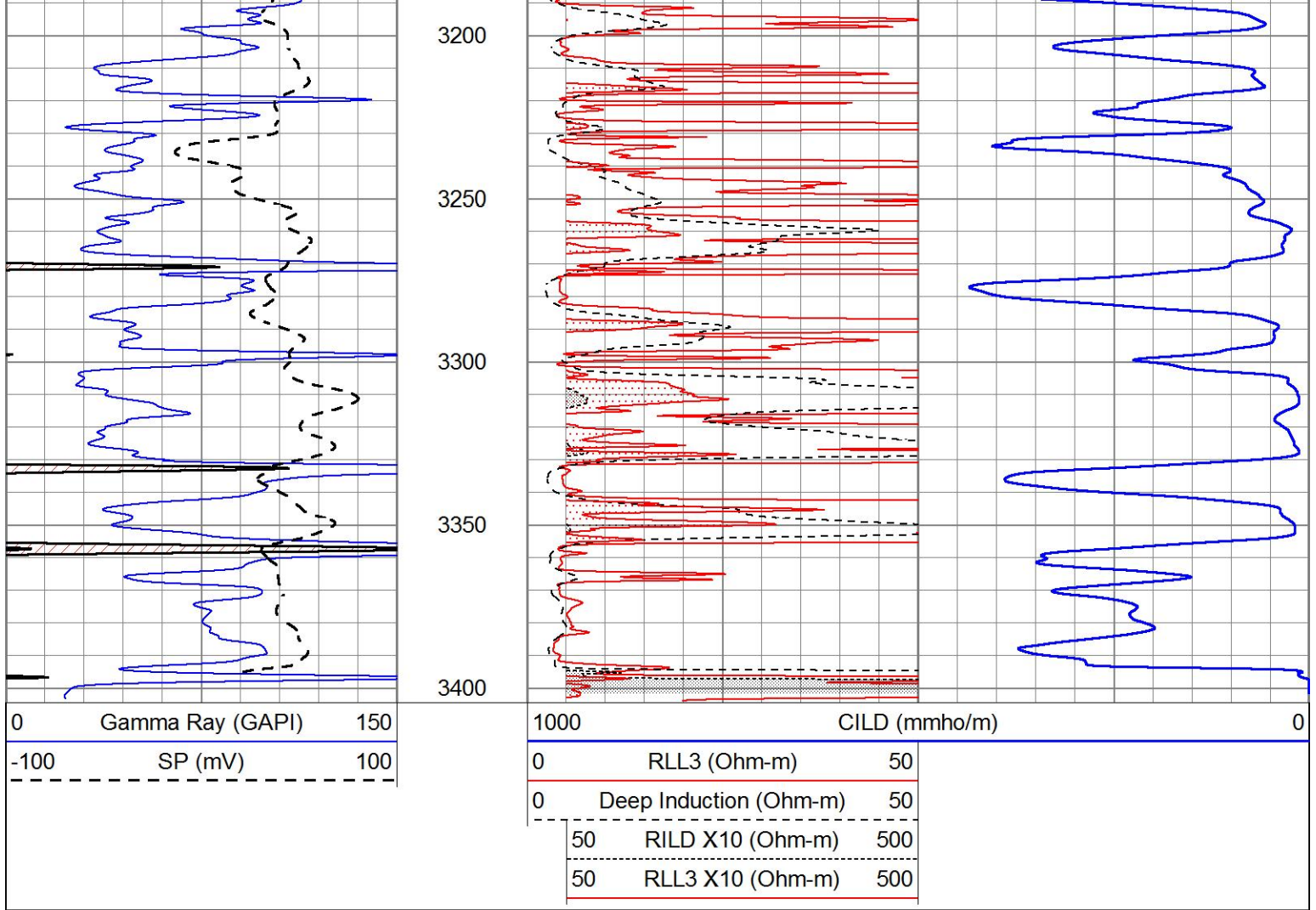
2500

2550

2600





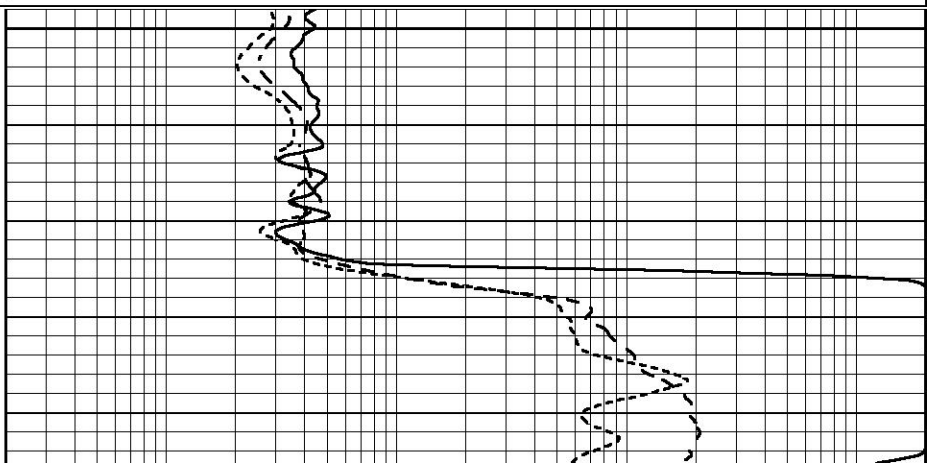
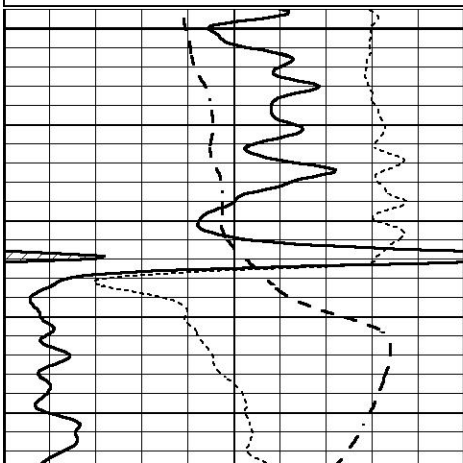


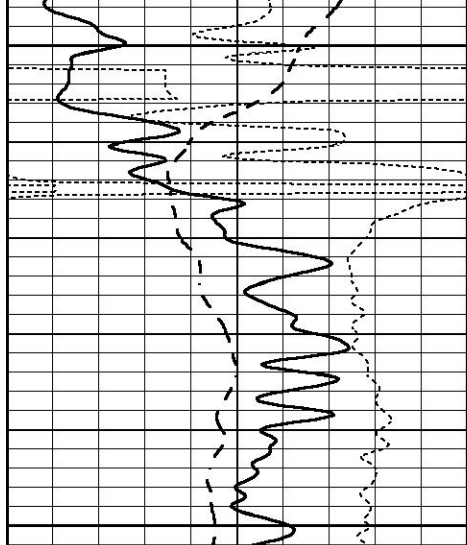
ANHYDRITE

Database File 5855ddn.db
 Dataset Pathname pass3.2
 Presentation Format _dil
 Dataset Creation Sun Sep 19 00:06:45 2021
 Charted by Depth in Feet scaled 1:240

0	GAMMA RAY (GAPI)	150
-100	SP (mV)	100
-250	Rxo/Rt	50

0.2	SHALLOW GUARD (Ohm-m)	2000
0.2	MEDIUM INDUCTION (Ohm-m)	2000
0.2	DEEP INDUCTION (Ohm-m)	2000

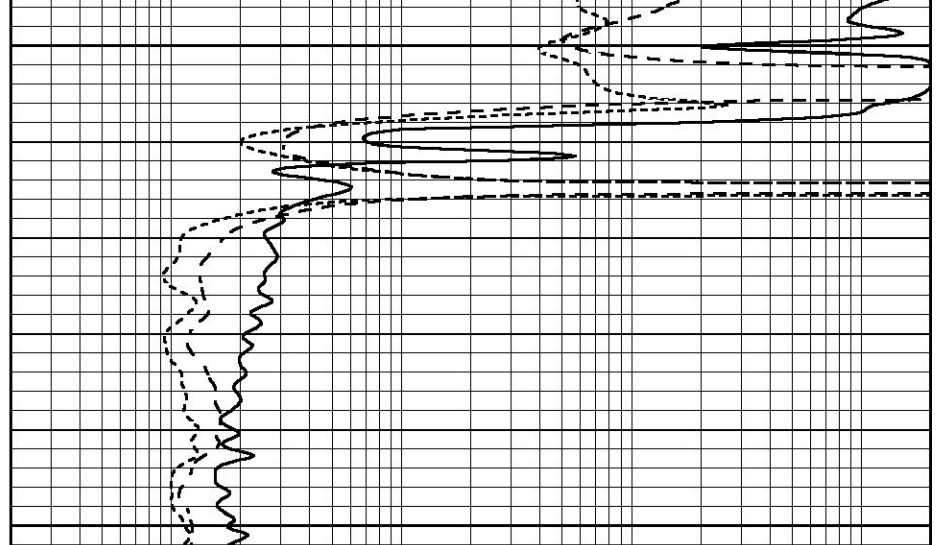




1400

1450

0	GAMMA RAY (GAPI)	150
-100	SP (mV)	100
-250	Rxo/Rt	50



0.2	SHALLOW GUARD (Ohm-m)	2000
0.2	MEDIUM INDUCTION (Ohm-m)	2000
0.2	DEEP INDUCTION (Ohm-m)	2000

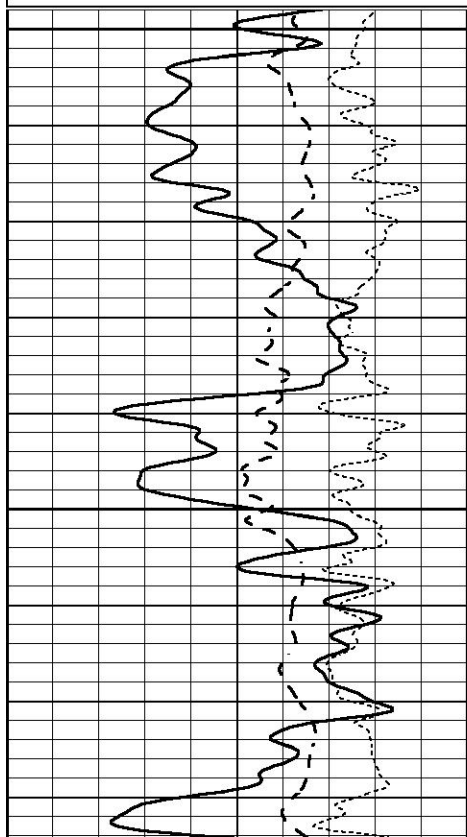


MAIN SECTION

Database File 5855ddn.db
 Dataset Pathname pass3.1
 Presentation Format _dil
 Dataset Creation Sat Sep 18 23:57:07 2021
 Charted by Depth in Feet scaled 1:240

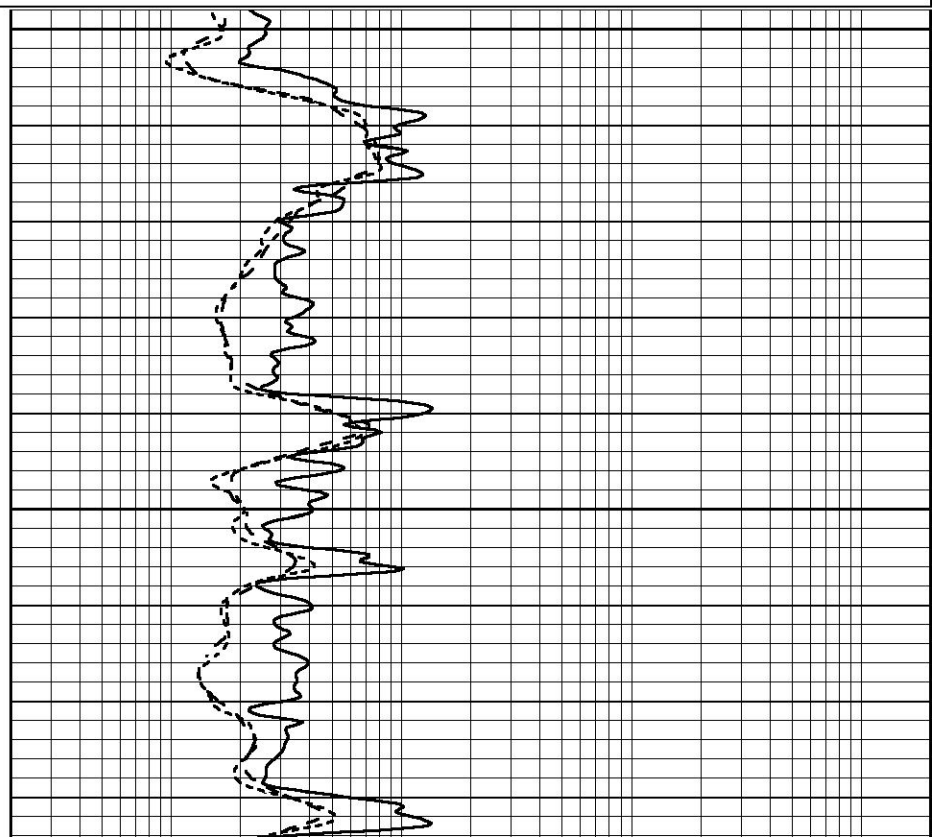
0	GAMMA RAY (GAPI)	150
-100	SP (mV)	100
-250	Rxo/Rt	50

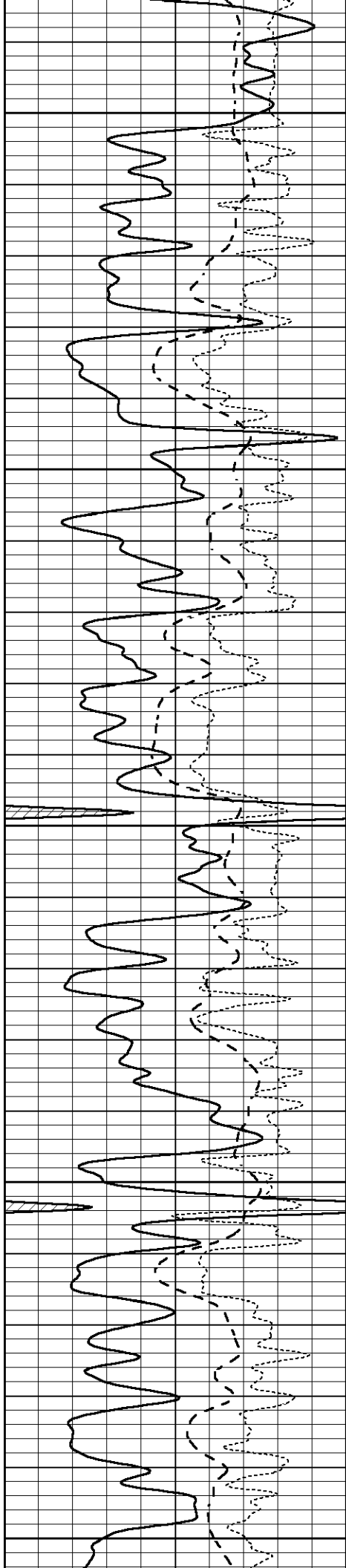
0.2	SHALLOW GUARD (Ohm-m)	2000
0.2	MEDIUM INDUCTION (Ohm-m)	2000
0.2	DEEP INDUCTION (Ohm-m)	2000



2800

2850





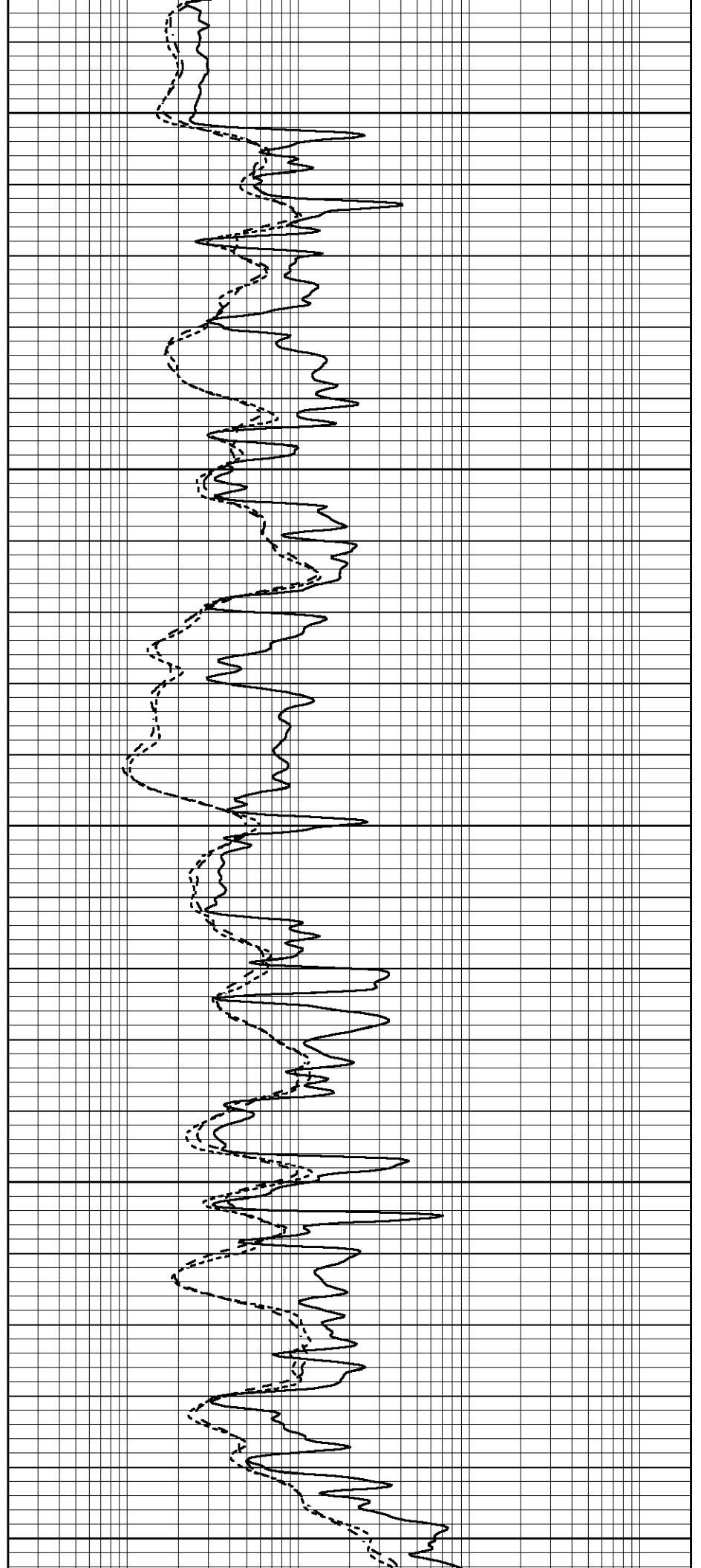
2900

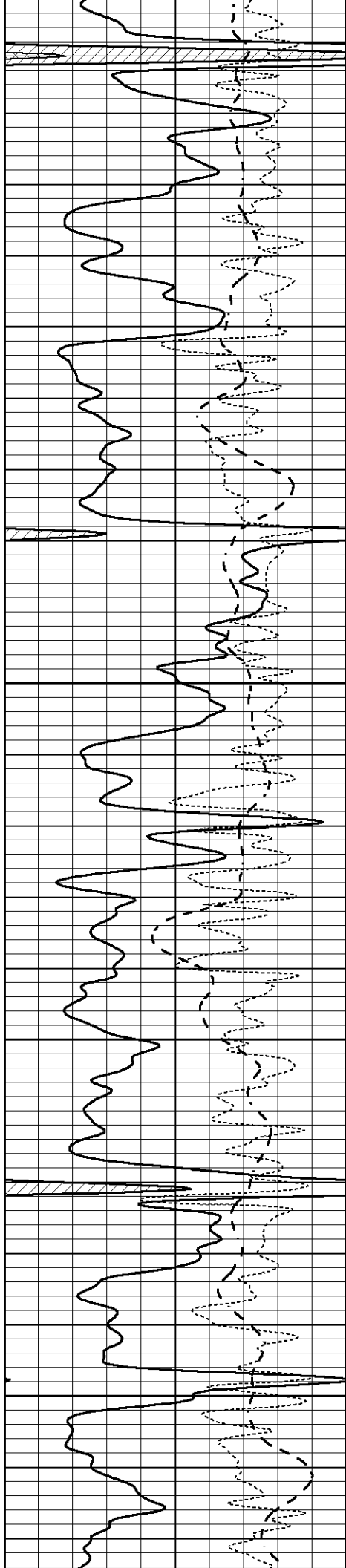
2950

3000

3050

3100



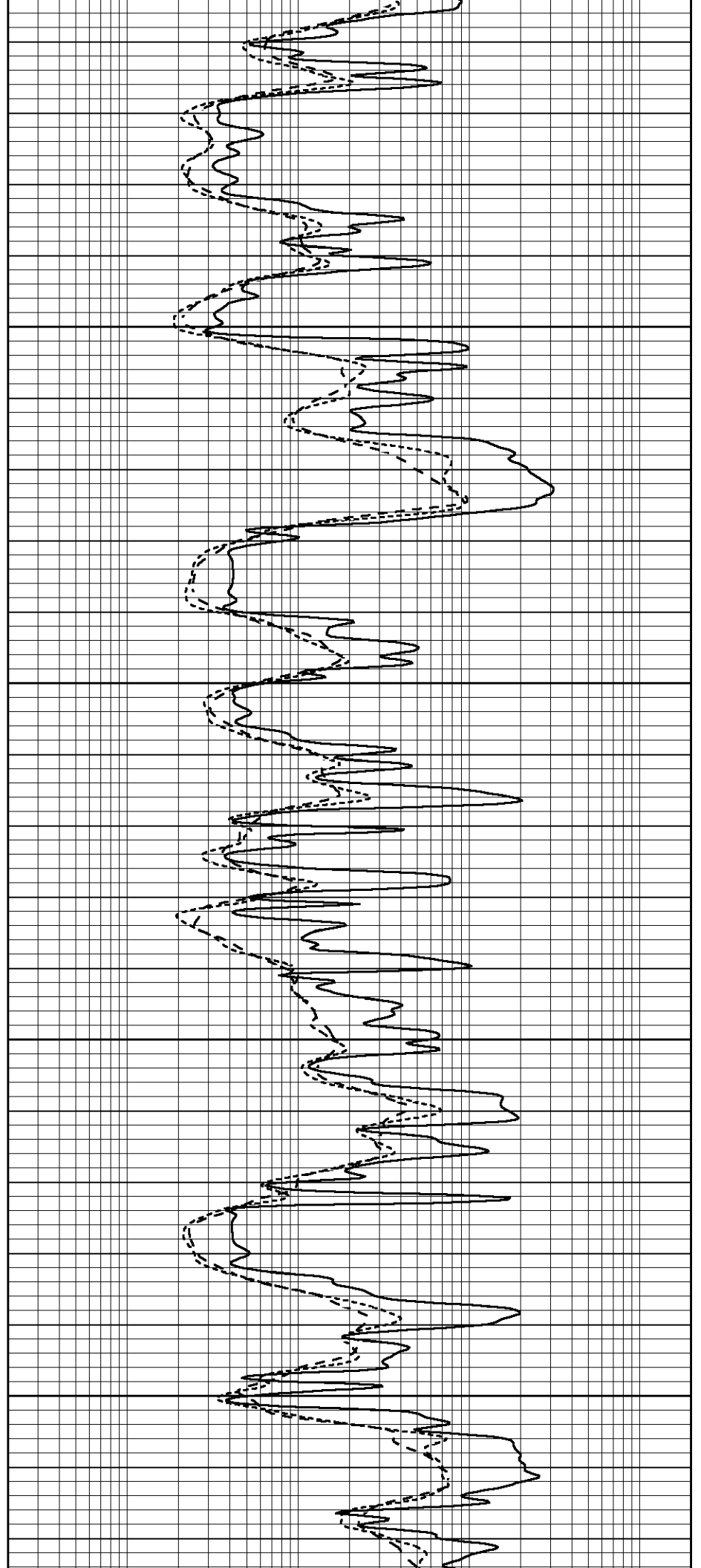


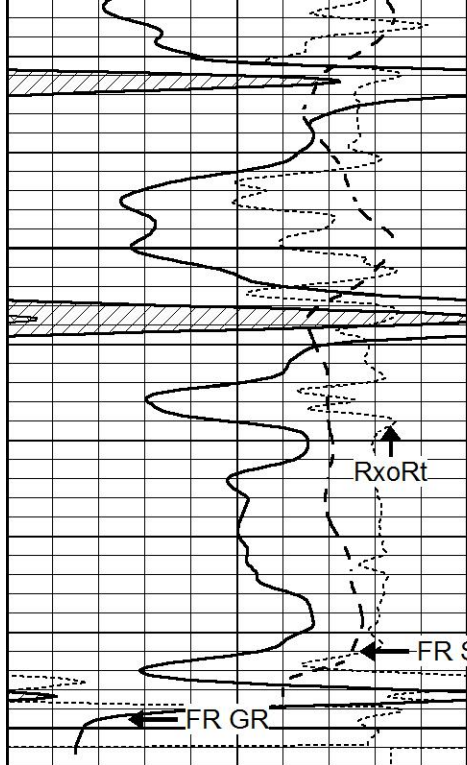
3150

3200

3250

3300

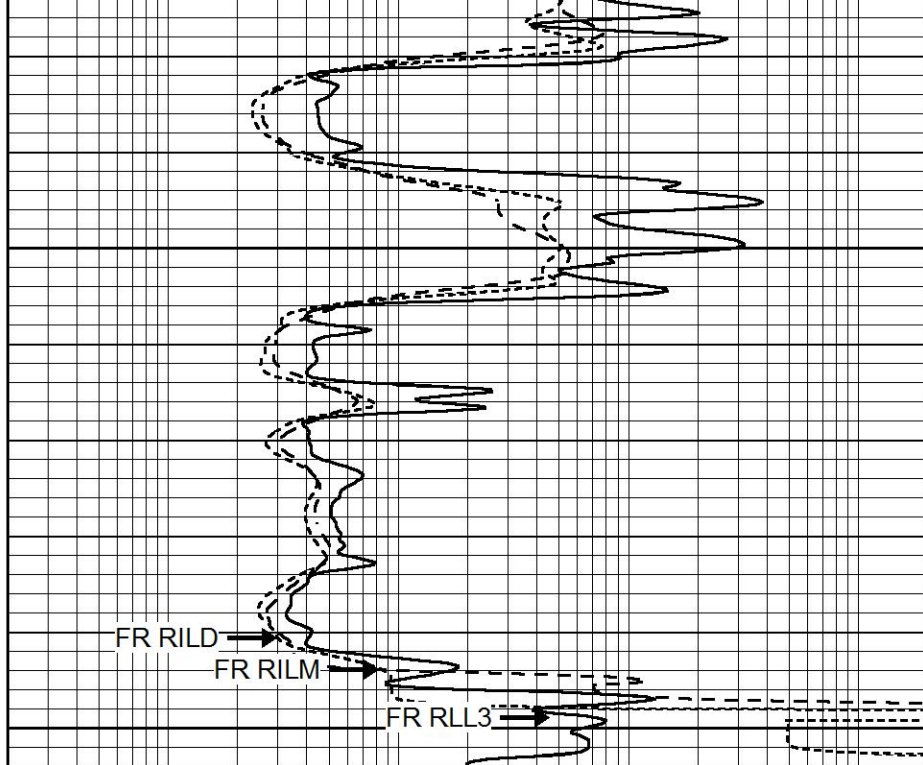




3350

3400
LTD 3402

0	GAMMA RAY (GAPI)	150
-100	SP (mV)	100
-250	Rxo/Rt	50



0.2	SHALLOW GUARD (Ohm-m)	2000
0.2	MEDIUM INDUCTION (Ohm-m)	2000
0.2	DEEP INDUCTION (Ohm-m)	2000

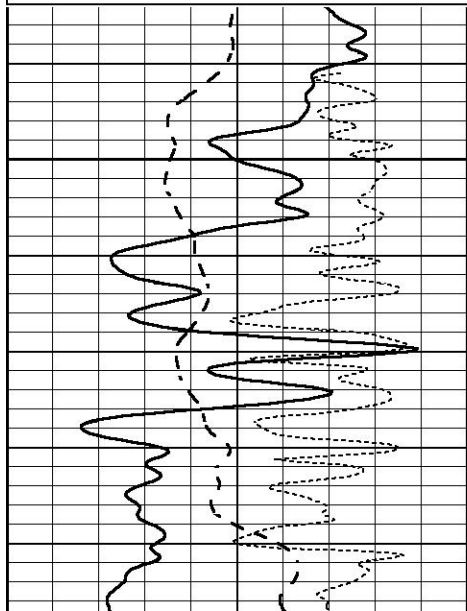


REPEAT SECTION

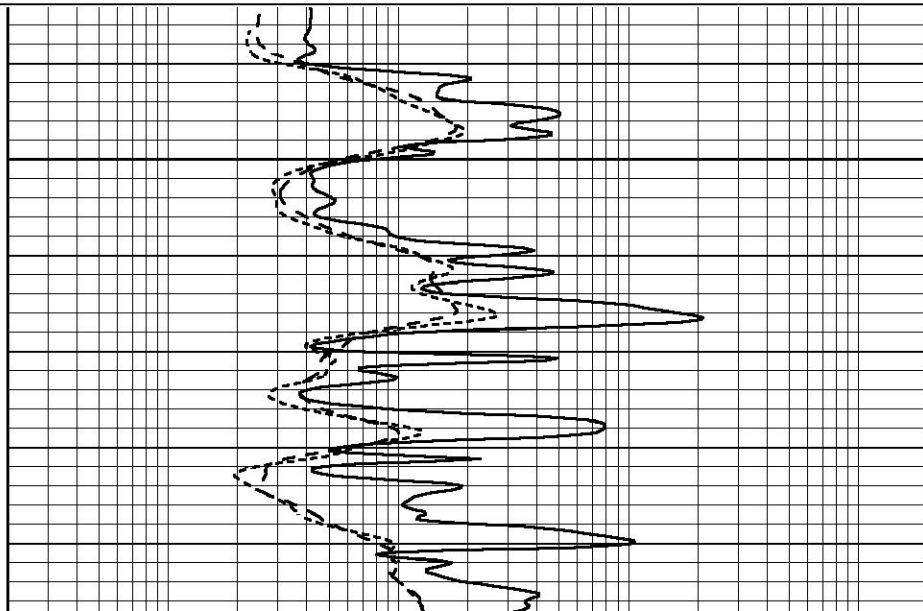
Database File 5855ddn.db
 Dataset Pathname pass2.1
 Presentation Format _dil
 Dataset Creation Sat Sep 18 23:55:20 2021
 Charted by Depth in Feet scaled 1:240

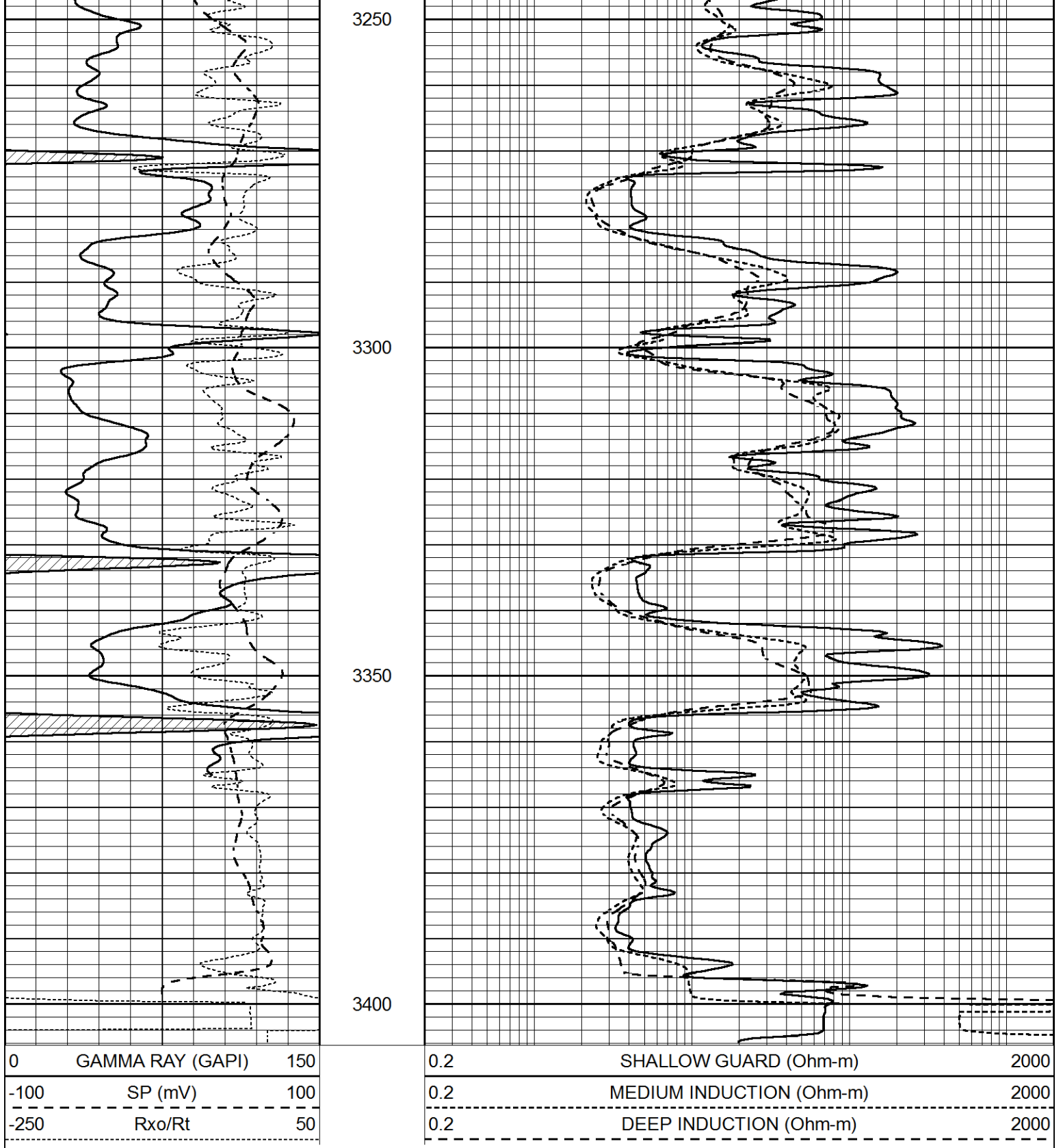
0	GAMMA RAY (GAPI)	150
-100	SP (mV)	100
-250	Rxo/Rt	50

0.2	SHALLOW GUARD (Ohm-m)	2000
0.2	MEDIUM INDUCTION (Ohm-m)	2000
0.2	DEEP INDUCTION (Ohm-m)	2000



3200





Calibration Report

Database File 5855ddn.db
 Dataset Pathname pass2.1
 Dataset Creation Sat Sep 18 23:55:20 2021

Dual Induction Calibration Report

Serial-Model:	FW1410-55-Probe
Surface Cal Performed:	Tue Feb 19 11:44:18 2019
Downhole Cal Performed:	Tue Feb 19 11:44:24 2019
After Survey Verification Performed:	Tue Feb 19 11:44:27 2019

Surface Calibration				References			Results	
Loop:	Readings			References			m	b
	Air	Loop		Air	Loop			
Deep	0.011	0.656	V	1.000	400.000	mmho/m	618.595	-5.524
Medium	-0.000	0.731	V	1.000	464.000	mmho/m	632.856	1.197
Internal:	Zero	Cal		Zero	Cal		m	b
Deep	0.007	0.649	V	0.000	400.000	mmho/m	623.784	-4.595
Medium	0.004	0.743	V	0.000	464.000	mmho/m	627.284	-2.251

Downhole Calibration				References			Results	
	Readings			References			m'	b'
	Zero	Cal		Zero	Cal			
Deep	-0.824	395.917	mmho/m	-0.976	397.550	mmho/m	1.004	-0.149
Medium	3.565	471.327	mmho/m	3.468	471.590	mmho/m	1.001	-0.099
LL3		7.503	V		1500.000	Ohm-m		
		0.001	V		20.000	Ohm-m		
		-7.481	V		3745.000	mmho-m		

After Survey Verification				Targets			Results	
	Readings			Targets			m'	b'
	Zero	Cal		Zero	Cal			
Deep	0.000	0.000	mmho/m	-0.824	395.917	mmho/m	1.000	0.000
Medium	0.000	0.000	mmho/m	3.565	471.327	mmho/m	1.000	0.000
LL3		0.000	Ohm-m		1500.000	Ohm-m		
		0.000	Ohm-m		20.000	Ohm-m		
		0.000	mmho-m		3745.000	mmho-m		

Litho Density Calibration Report
Serial: 140703
Model: V4_10P
Source Number: 74GBq-19

Master Calibration				Performed: Wed Dec 02 12:04:44 2020			
	Background		Aluminum		Magnesium		
Window 1	595.38		5386.50		23898.92		cps
Window 2	52.78		1248.21		5993.75		cps
Window 4	251.36		1200.30		5155.55		cps
Window 5	545.15		9066.30		17240.12		cps
Window 6	43.35		1491.73		2929.24		cps
Window 8	258.76		2917.82		5450.26		cps
Bulk Density	-		2.6020		1.6830		g/cc
Pe	-		3.0000		2.5070		b/e
LS Alpha:	: -1.8726		SS Alpha:	: -0.7656		LS CPE:	: 1.0742
LS Beta:	: 127345.0723		SS Beta:	: 20293.3834		SS CPE:	: 1.5427

Before Survey Background Counts Verification			Performed: Wed Dec 31 18:00:00 1969		
Window 1	0.00	cps			
Window 2	0.00	cps			
Window 4	0.00	cps			
Window 5	0.00	cps			
Window 6	0.00	cps			
Window 8	0.00	cps			

After Survey Background Counts Verification

Performed: Wed Dec 31 18:00:00 1969

Window 1	0.00	cps
Window 2	0.00	cps
Window 4	0.00	cps
Window 5	0.00	cps
Window 6	0.00	cps
Window 8	0.00	cps

Lithodensity Caliper Calibration

Performed: Wed Dec 02 12:04:44 2020

Results Readings		References (in)		Gain	Offset
Low	High	Low	High		
8005.3	11087.2	8.0	14.0	0.0	-7.5

Before Survey Caliper Verification

Performed:

Reference	Reading
_____	_____
Caliper (in)	

After Survey Caliper Verification

Performed:

Reference	Reading
_____	_____
Caliper (in)	

Compensated Neutron Calibration Report

Serial Number: 080621PMC
Tool Model: NABORS

PRE-SURVEY VERIFICATION

Detector	Readings	Measured	Target
Short Space	cps		
Long Space	cps	pu	pu

POST-SURVEY VERIFICATION

Detector	Readings	Measured	Target
Short Space	cps		
Long Space	cps	pu	pu

Gamma Ray Calibration Report

Serial Number: 7
Tool Model: Probe1
Performed: Tue Jan 19 17:50:08 2021

Calibrator Value: 1.0 GAPI

Background Reading: 0.0 cps
Calibrator Reading: 1.0 cps

Sensitivity: 0.5300 GAPI/cps