

MICRO  
LOG



Company MAI OIL OPERATIONS, INC.  
Well J.A. STICE #12  
Field WEBSTER  
County ROOKS State KANSAS

Location: API #: 15-163-24435-0000  
1925' FSL & 1672' FEL  
NW-SE-NW-SE  
SEC 27 TWP 8S RGE 19W  
Permanent Datum GROUND LEVEL Elevation 1955  
Log Measured From KELLY BUSHING 10' A.G.L.  
Drilling Measured From KELLY BUSHING  
Other Services  
CDL/CNL  
DIL  
Elevation  
K.B. 1965  
D.F. 1963  
G.L. 1955

Date	9/18/21		
Run Number	TWO		
Depth Driller	3401		
Depth Logger	3402		
Bottom Logged Interval	3400		
Top Log Interval	2800		
Casing Driller	8 5/8" @ 263		
Casing Logger	263		
Bit Size	7 7/8		
Type Fluid in Hole	CHEMICAL MUD	CHLORIDES 5500 PPM	
Density / Viscosity	9.4/60		
pH / Fluid Loss	11.0/6.0		
Source of Sample	FLOWLINE		
Rm @ Meas. Temp	.65 @ 80F		
Rmf @ Meas. Temp	.48 @ 80F		
Rmc @ Meas. Temp	.78 @ 80F		
Source of Rmf / Rmc	MEASUREMENT		
Rm @ BHT	.46 @ 111F		
Time Circulation Stopped	2 HOURS		
Time Logger on Bottom	////		
Maximum Recorded Temperature	111F		
Equipment Number	3802		
Location	HAYS, KANSAS		
Recorded By	JASON CAPPELLUCCI		
Witnessed By	JIM MUSGROVE		

<<< Fold Here >>>

All interpretations are opinions based on inferences from electrical or other measurements and we cannot and do not guarantee the accuracy or correctness of any interpretation, and we shall not, except in the case of gross or willful negligence on our part, be liable or responsible for any loss, costs, damages, or expenses incurred or sustained by anyone resulting from any interpretation made by any of our officers, agents or employees. These interpretations are also subject to our general terms and conditions set out in our current Price Schedule.

Comments

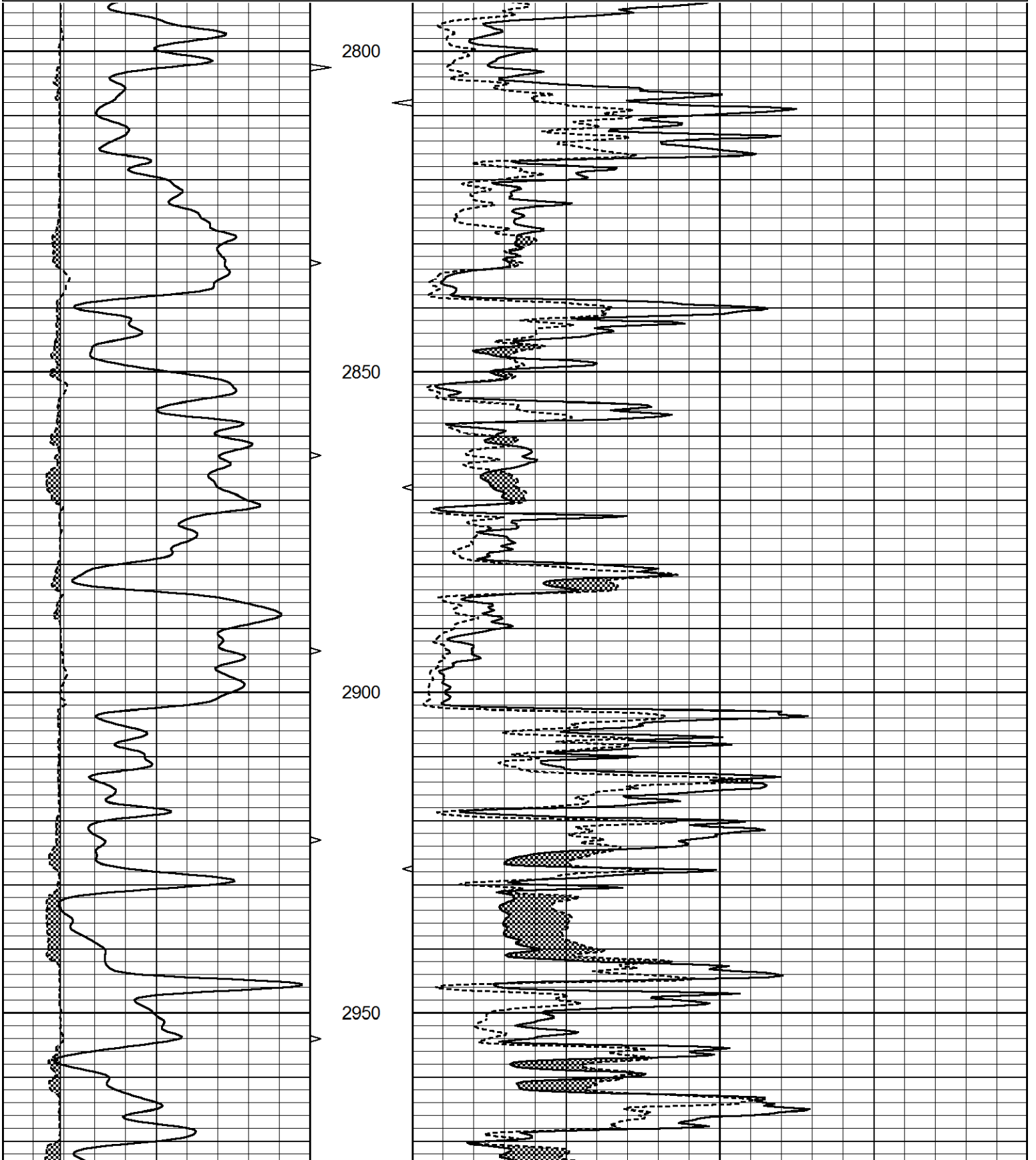
THANK YOU FOR USING ELI WIRELINE SERVICES, HAYS, KS. ( 785 ) 628-6395  
DIRECTIONS  
PLAINVILLE, KS. - 6 NORTH TO RD. R - 6 1/2 WEST - 1/2 NORTH - EAST INTO

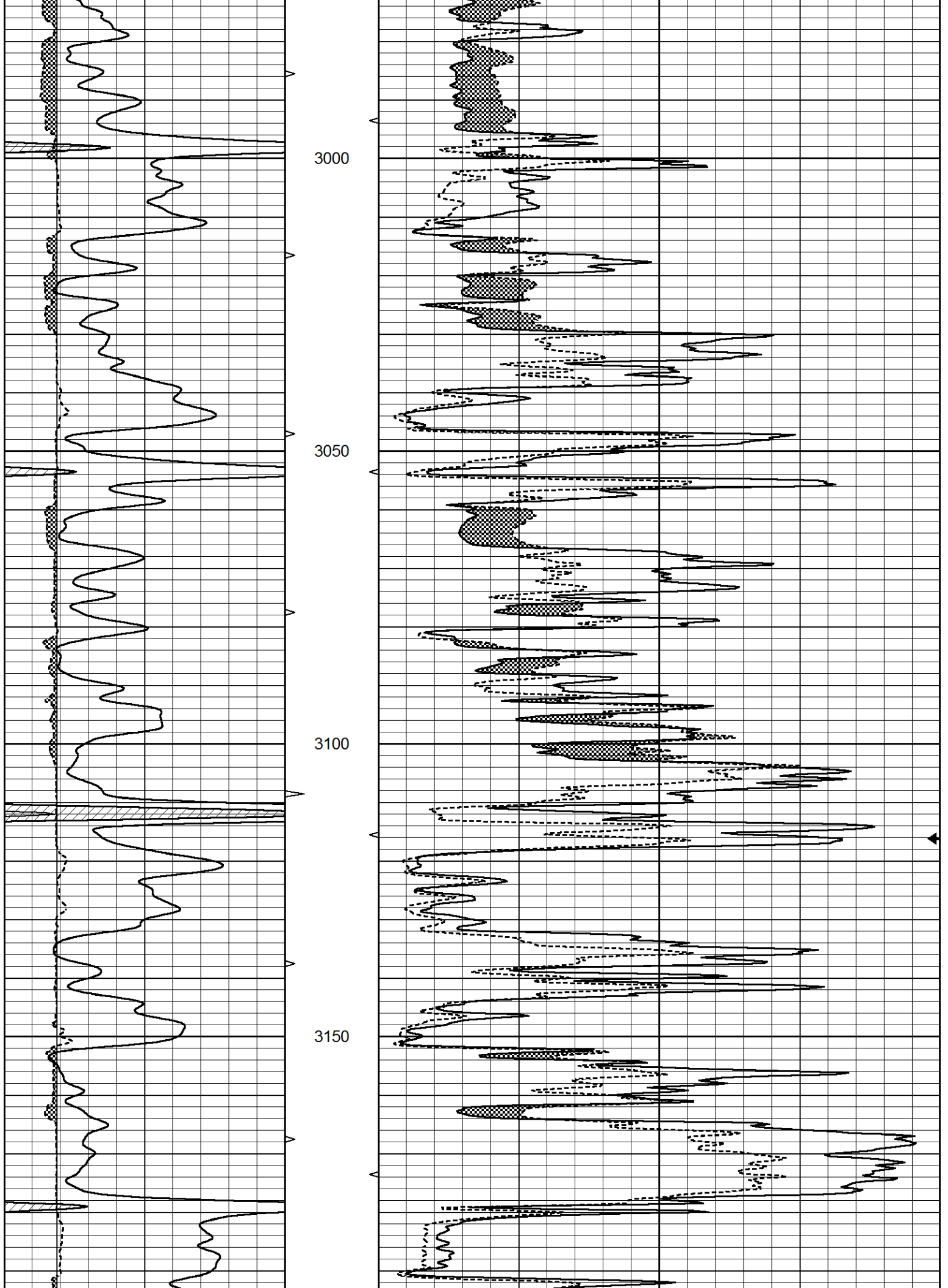


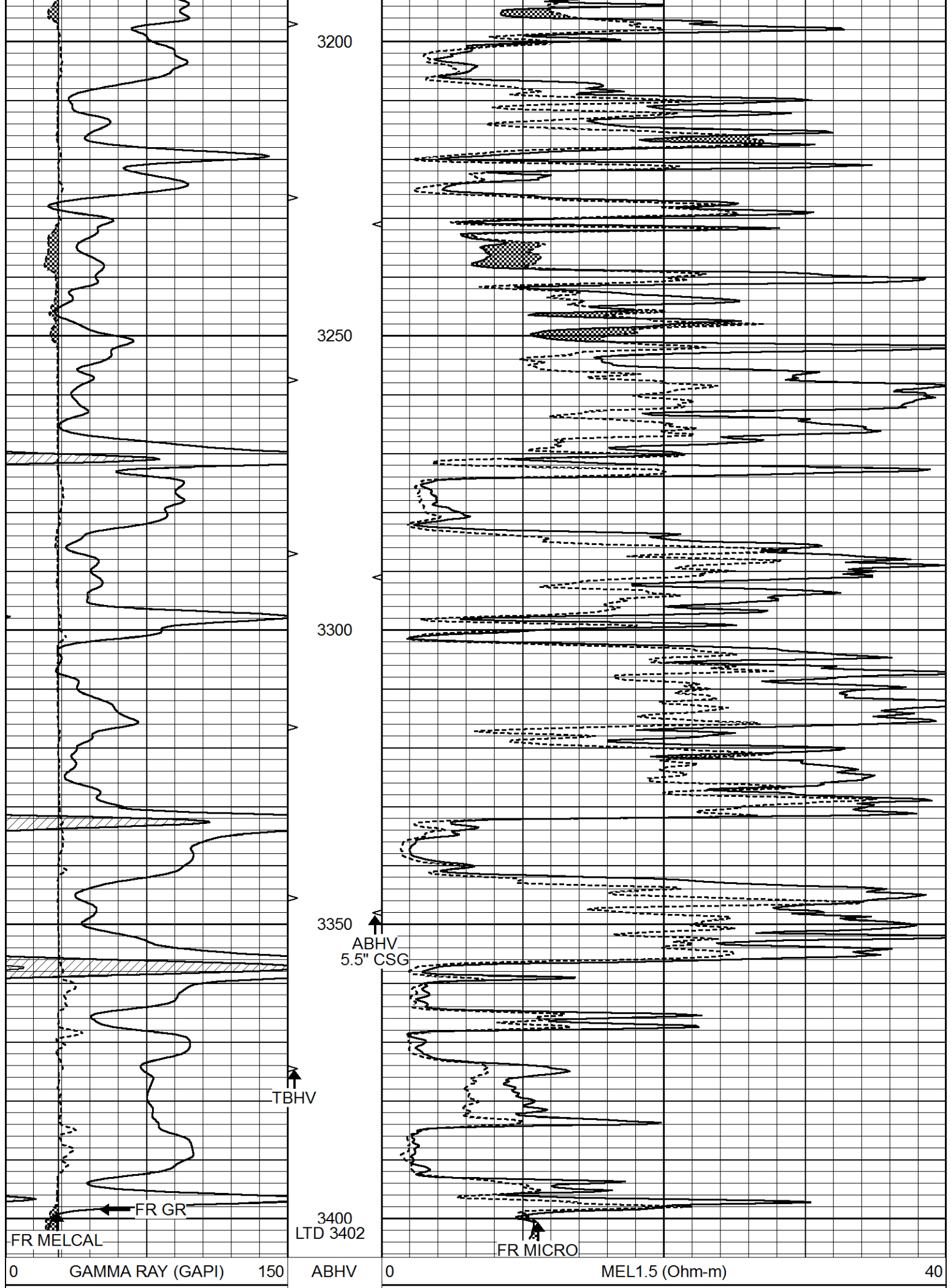
MAIN SECTION

Database File 5855ddn.db  
 Dataset Pathname pass8.1  
 Presentation Format \_micro  
 Dataset Creation Sun Sep 19 02:19:07 2021  
 Charted by Depth in Feet scaled 1:240

0	GAMMA RAY (GAPI)	150	ABHV	0	MEL1.5 (Ohm-m)	40
6	CALIPER (in)	16	10 (ft3)	0	MEL2.0 (Ohm-m)	40
			TBHV			
			0 (ft3)	10		







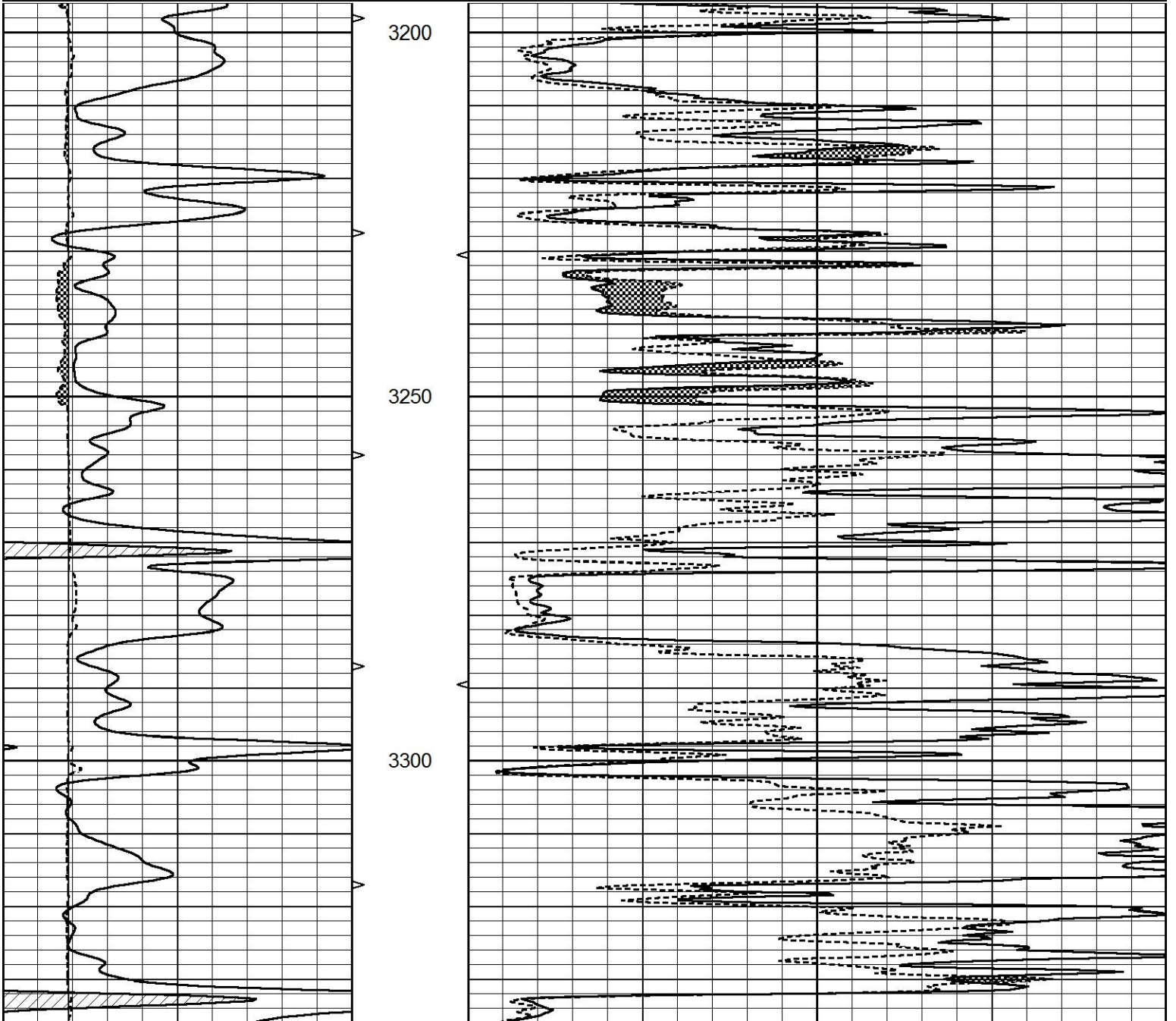
6	CALIPER (in)	16	10 (ft3)	0	0	MEL2.0 (Ohm-m)	40
		TBHV					
		0 (ft3)		10			

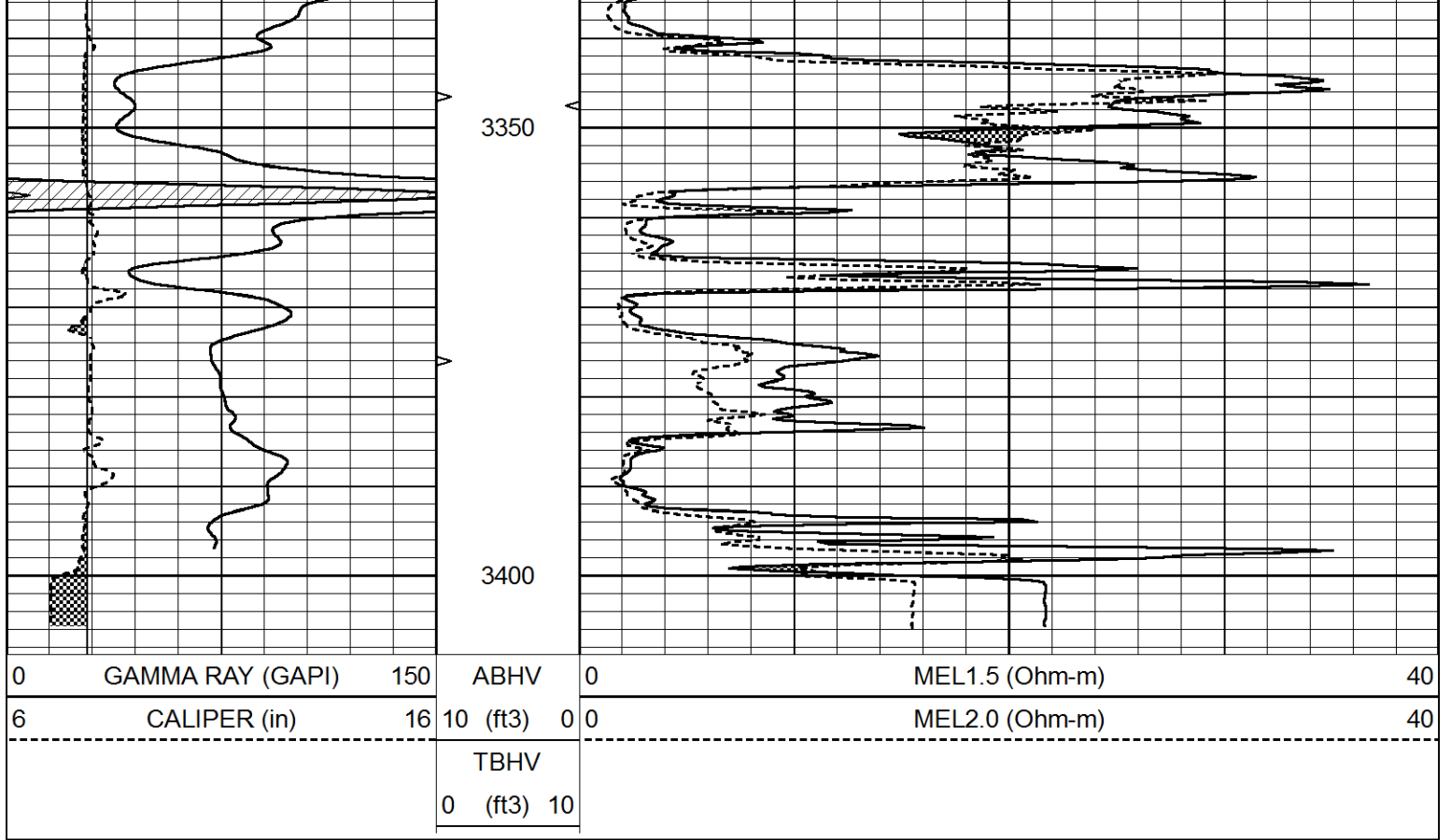


# REPEAT SECTION

Database File 5855ddn.db  
 Dataset Pathname pass7.1  
 Presentation Format \_micro  
 Dataset Creation Sun Sep 19 02:17:03 2021  
 Charted by Depth in Feet scaled 1:240

0	GAMMA RAY (GAPI)	150	ABHV	0	MEL1.5 (Ohm-m)	40	
6	CALIPER (in)	16	10 (ft3)	0	MEL2.0 (Ohm-m)	40	
		TBHV					
		0 (ft3)		10			





### Calibration Report

Database File 5855ddn.db  
 Dataset Pathname pass7.1  
 Dataset Creation Sun Sep 19 02:17:03 2021

### MICRO\_USR Calibration Report

Serial Number:	070910	
Tool Model:	ProbeL	
Performed:	Fri Aug 27 11:31:29 2021	
Caliper Calibration:	Gain=7.192	Offset=2.802
References	Low Cal 8.000	High Cal 14.000
Readings	0.723	1.557
1.5" Calibration:	Gain=60.000	Offset=-1.500
References	Low Cal 0.000	High Cal 20.000
Readings	0.004	1.335
2" Calibration:	Gain=85.000	Offset=-2.400
References	Low Cal 0.000	High Cal 20.000
Readings	0.004	1.029

### Microlog Calibration Report

Serial-Model:	070910-ProbeL
Performed:	(Not Performed)

Readings		References		Results	
Zero	Cal	Zero	Cal	m	b

Normal	0.0000	1.0000	V	0.0000	1.0000	Ohm-m	1.0000	0.0000
Inverse	0.0000	1.0000	V	0.0000	1.0000	Ohm-m	1.0000	0.0000
Caliper	0.0000	1.0000	V	0.0000	1.0000	in	1.0000	0.0000

### Gamma Ray Calibration Report

Serial Number:	070558	
Tool Model:	Probe1	
Performed:	Fri Oct 30 21:32:56 2020	
Calibrator Value:	1.0	GAPI
Background Reading:	0.0	cps
Calibrator Reading:	1.0	cps
Sensitivity:	0.2700	GAPI/cps