



Sensor	Offset (ft)	Schematic	Description	Length (ft)	O.D. (in)	Weight (lb)
MCAL MI MN	28.00 28.00 28.00		ML-Pengo (Pengo3)	5.50	3.50	100.00
			CENT-PENGO (4-PENGO)	5.50	3.00	70.00
WVF4 WVF1	13.50 13.50		SLT-PENGO (0001)	16.00	3.50	300.00
WVF3 WVF2	11.50 11.50		CENT-PENGO (3-PENGO)	5.50	3.00	70.00

Dataset: cholla\_wrangler 1-24.db: field/well/sonmel/pass2  
 Total length: 32.50 ft  
 Total weight: 540.00 lb  
 O.D.: 3.50 in

# Log Variables

DatabaseC:\ProgramData\Warrior\Data\cholla\_wrangler 1-24.db  
 Dataset field/well/stack/pass4.1/\_vars\_

## Top - Bottom

A	BOREID in	BOTTEMP degF	CASEOD in	CASETHCK in	FLUIDDEN g/cc	M	MATRXDEN g/cc
1	7.875	115	5.5	0	1	2	2.71
NPORSEL	PERFS	SNDERR mmho/m	SNDERRM mmho/m	SPSHIFT mV	SRFTEMP degF	SZCOR	TDEPTH ft
Limestone	0	0	0	355	80	Off	3875

## Variable Description

A : Cement Factor (a)  
 BOREID : Borehole I.D.  
 BOTTEMP : Bottom Hole Temperature  
 CASEOD : Casing O.D.  
 CASETHCK : Casing Thickness  
 FLUIDDEN : Fluid Density  
 M : Cement Exp (m)  
 MATRXDEN : Matrix Density

NPORSEL : Neutron Porosity Curve Select  
 PERFS : Perforation Flag  
 SNDERR : Deep Sonde Error Correction  
 SNDERRM : Medium Sonde Error Correction  
 SPSHIFT : S.P. Baseline Offset  
 SRFTEMP : Surface Temperature  
 SZCOR : CN Size Cor. ?  
 TDEPTH : Total Depth

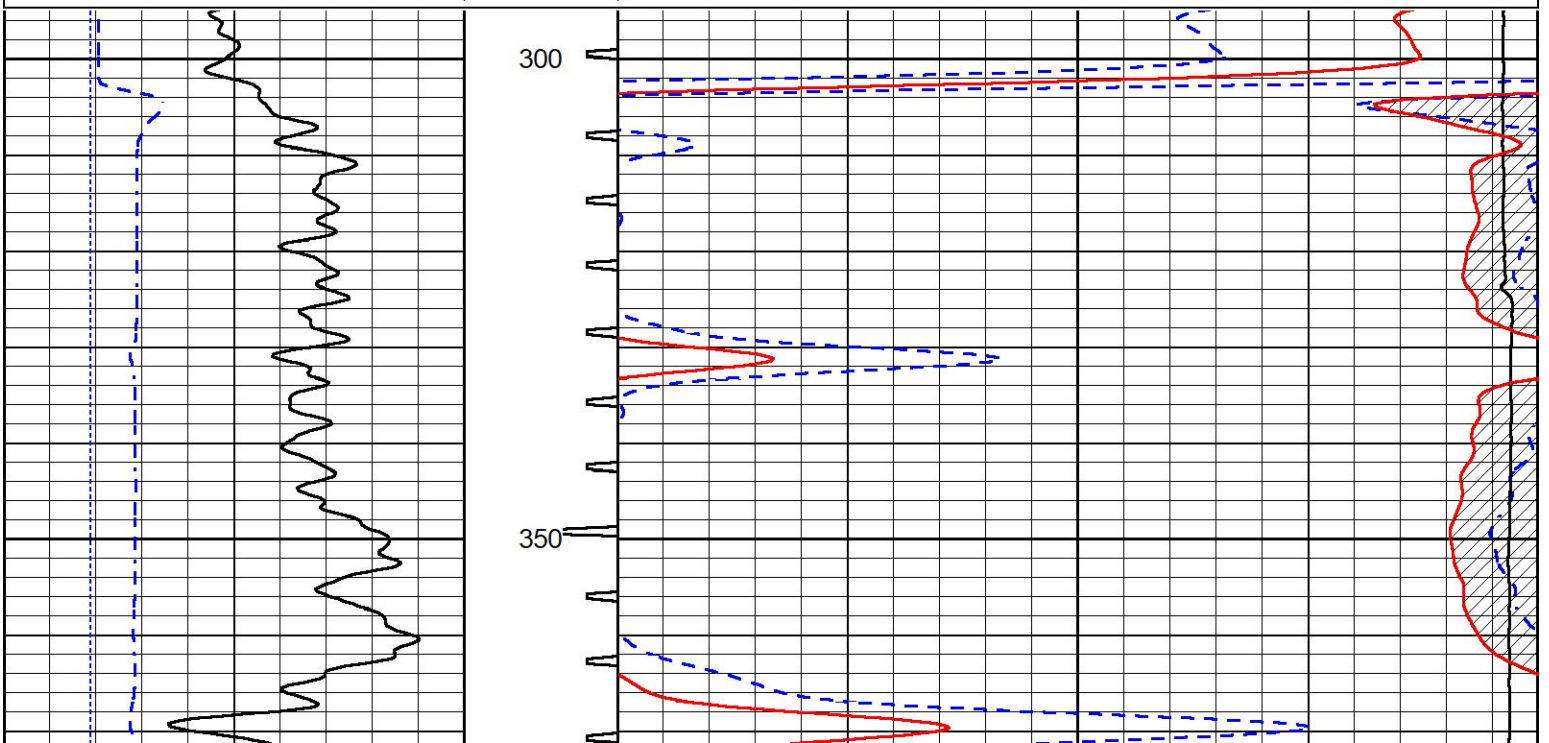


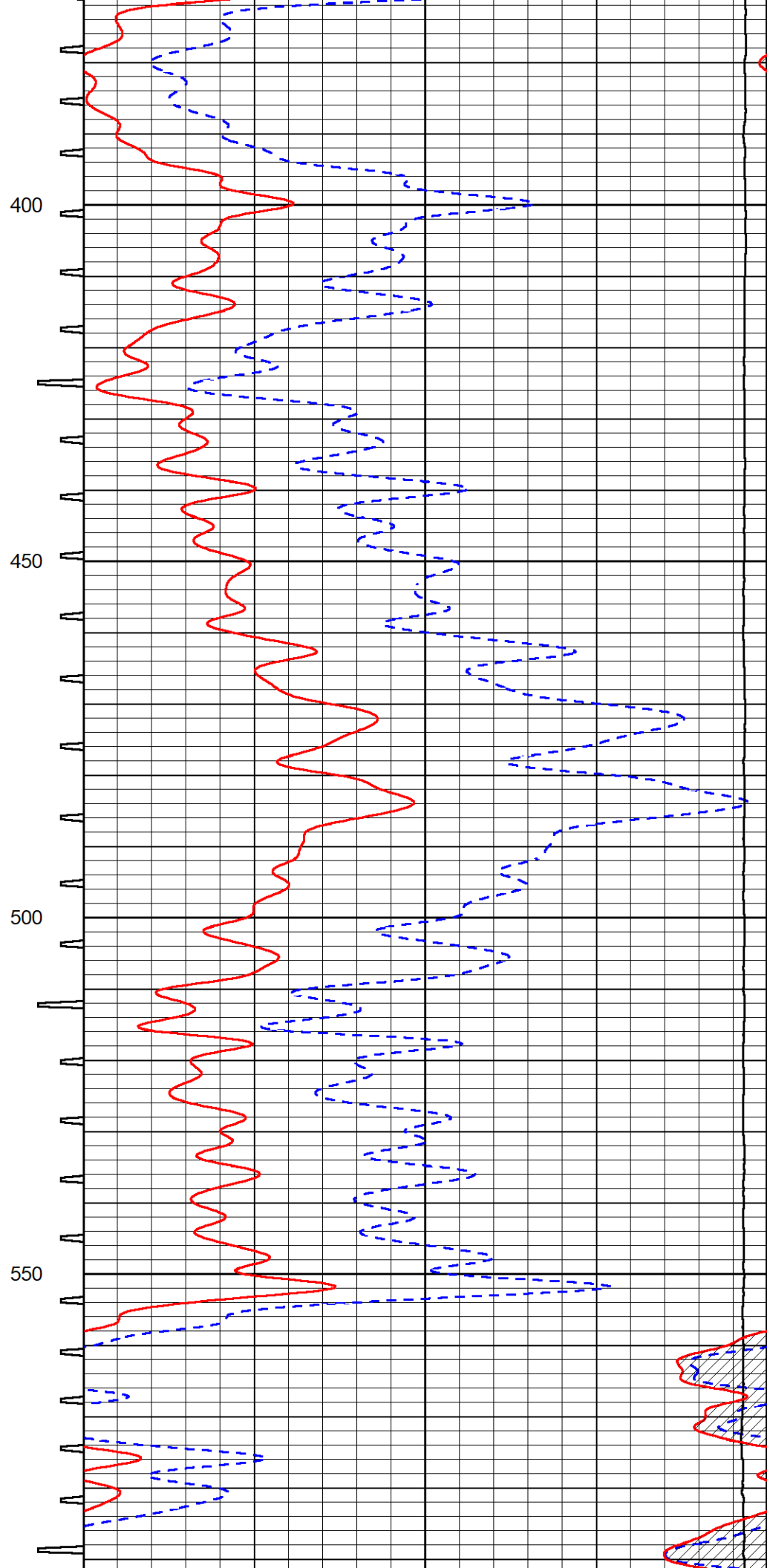
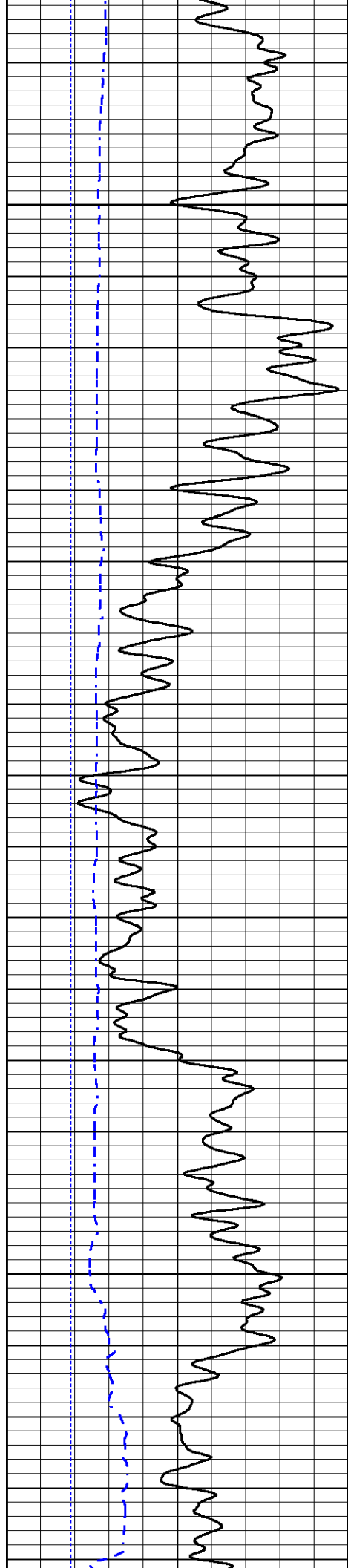
## DETAIL SECTION

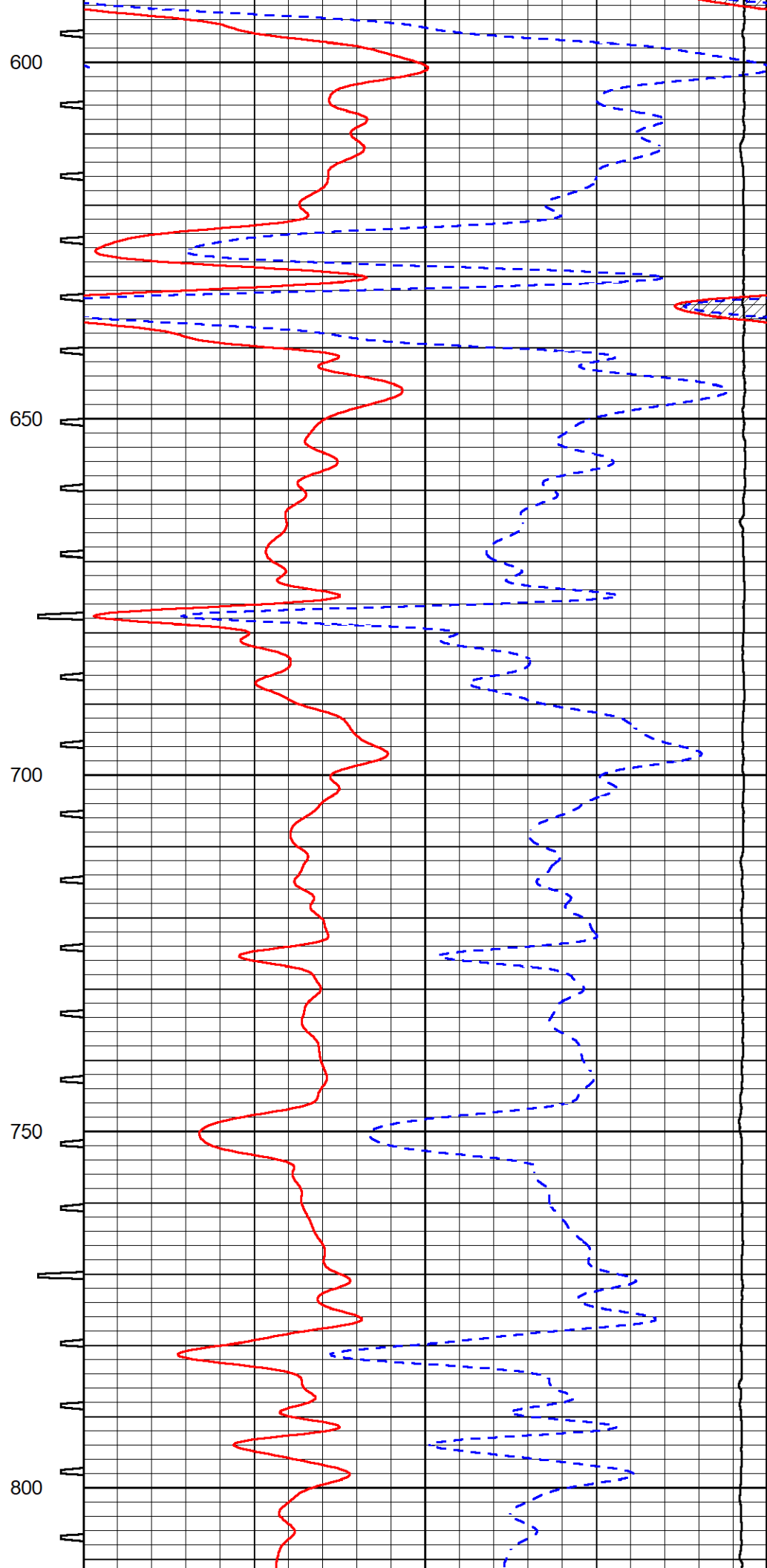
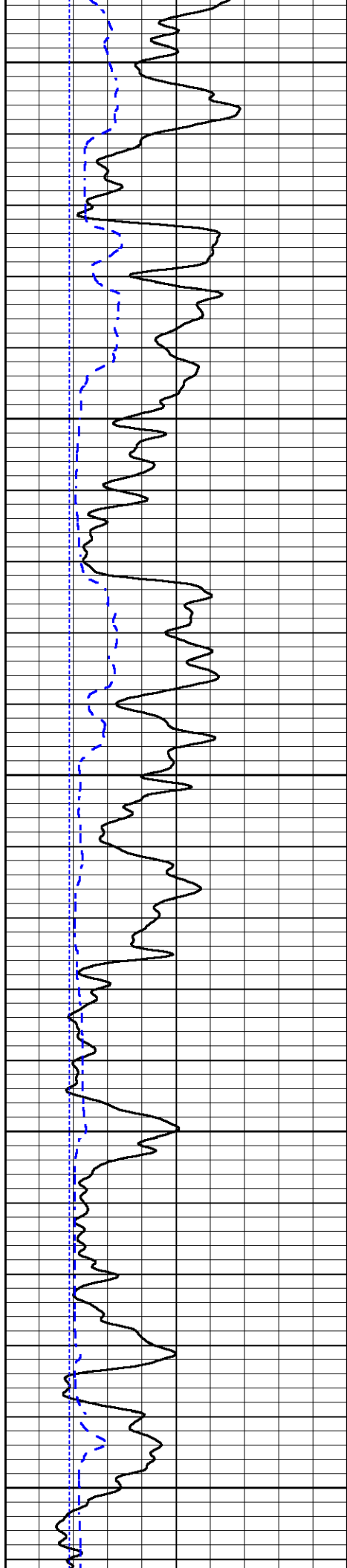
### MAIN PASS

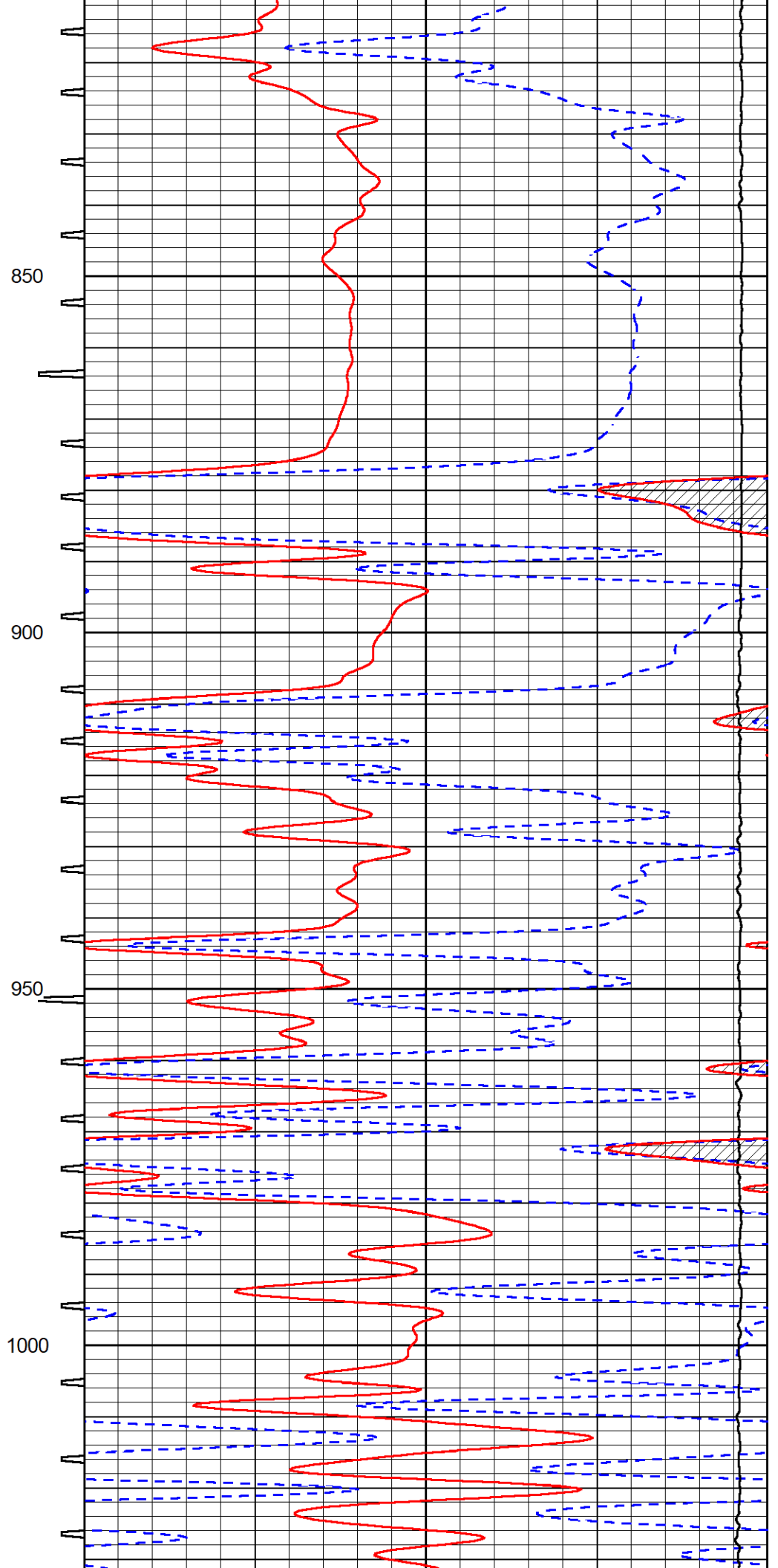
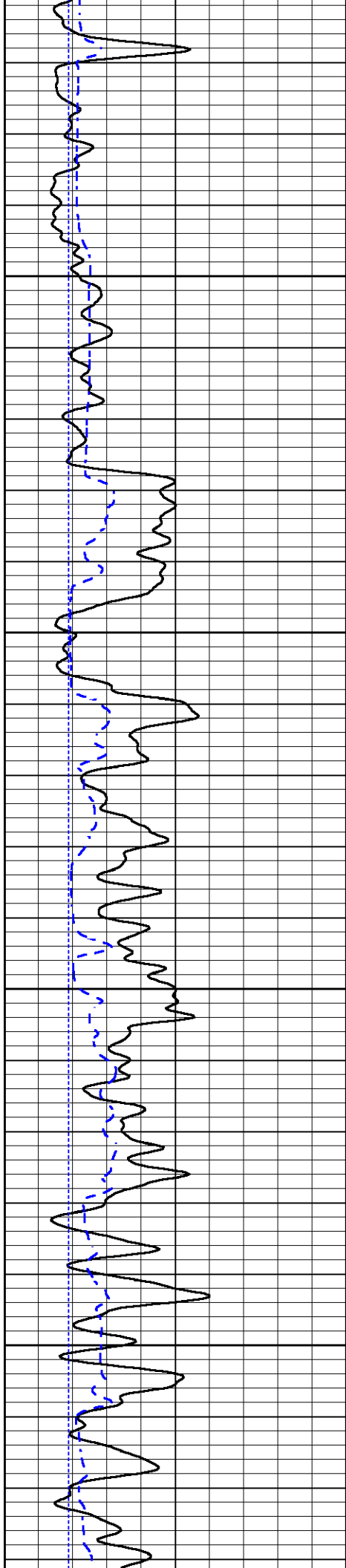
Database File cholla\_wrangler 1-24.db  
 Dataset Pathname stack/pass8.1  
 Presentation Format \_sonic  
 Dataset Creation Mon Aug 30 08:12:58 2021  
 Charted by Depth in Feet scaled 1:240

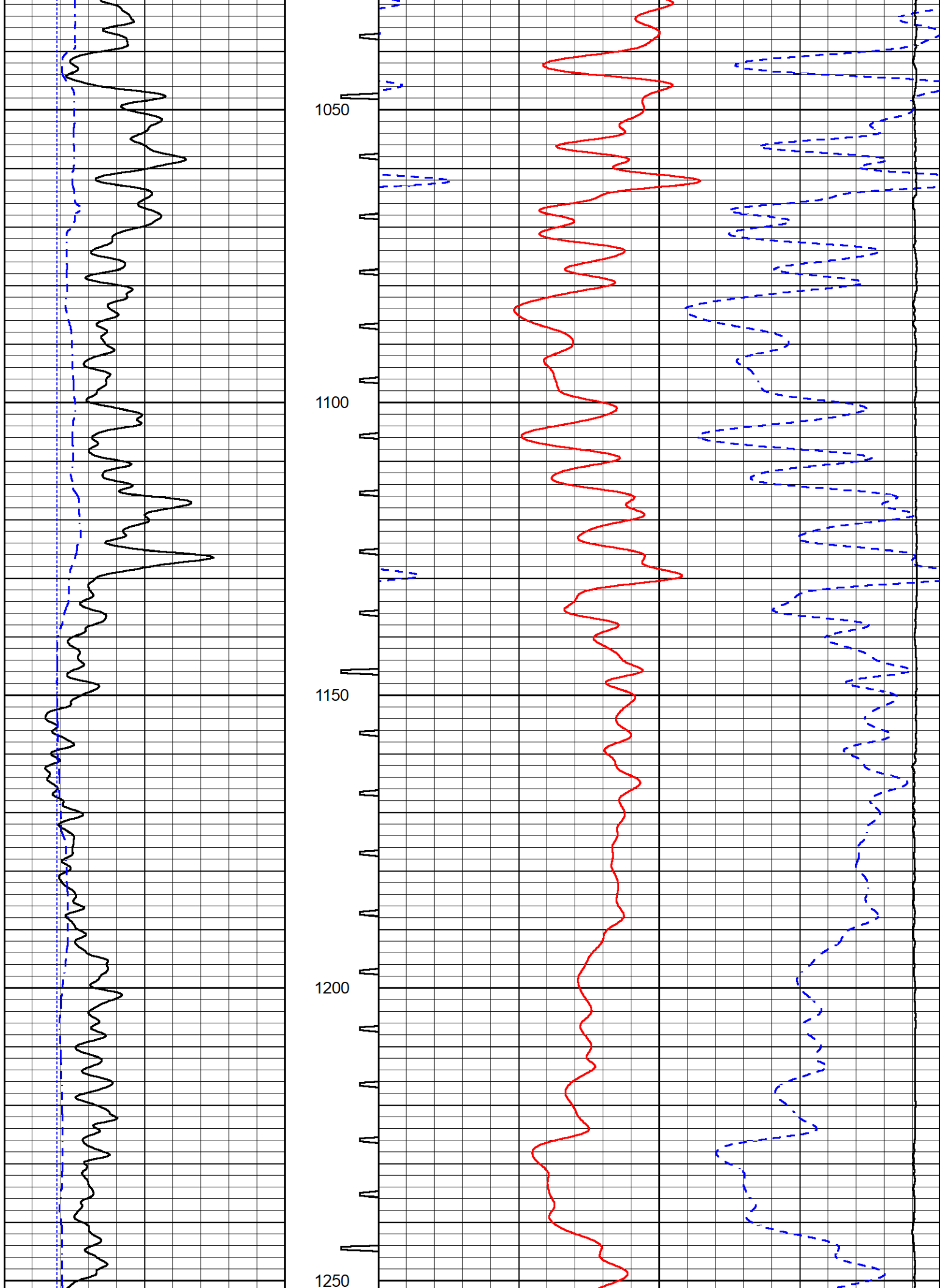
0	Gamma Ray (GAPI)	150	Sonic Int	140	Delta Time (usec/ft) (usec/ft)	40
150	GR (GAPI)	300	5 (msec) 0	30	Sonic Porosity (pu)	-10
6	DCAL (in)	16		15000	LTEN (lb) (lb)	0

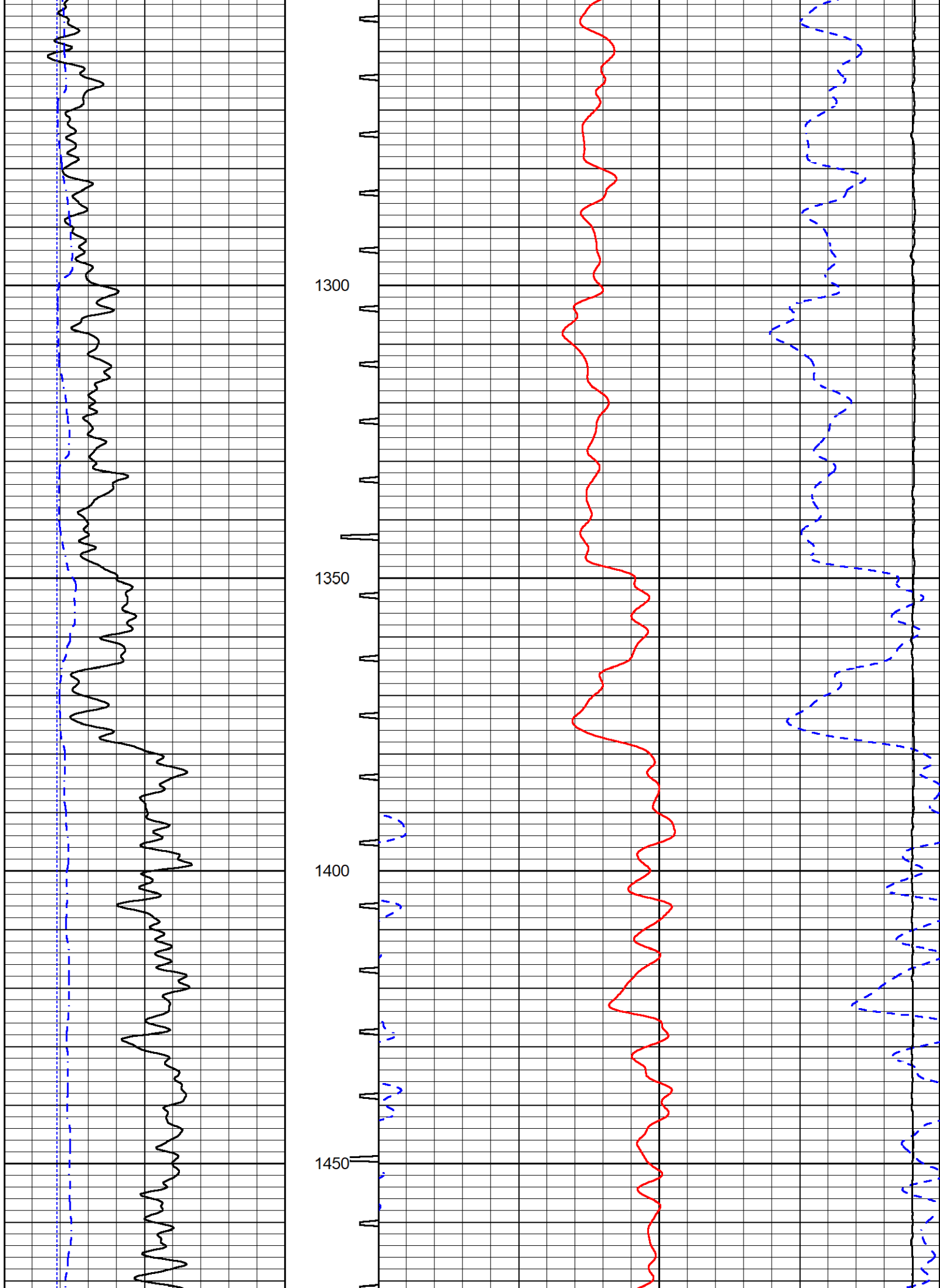


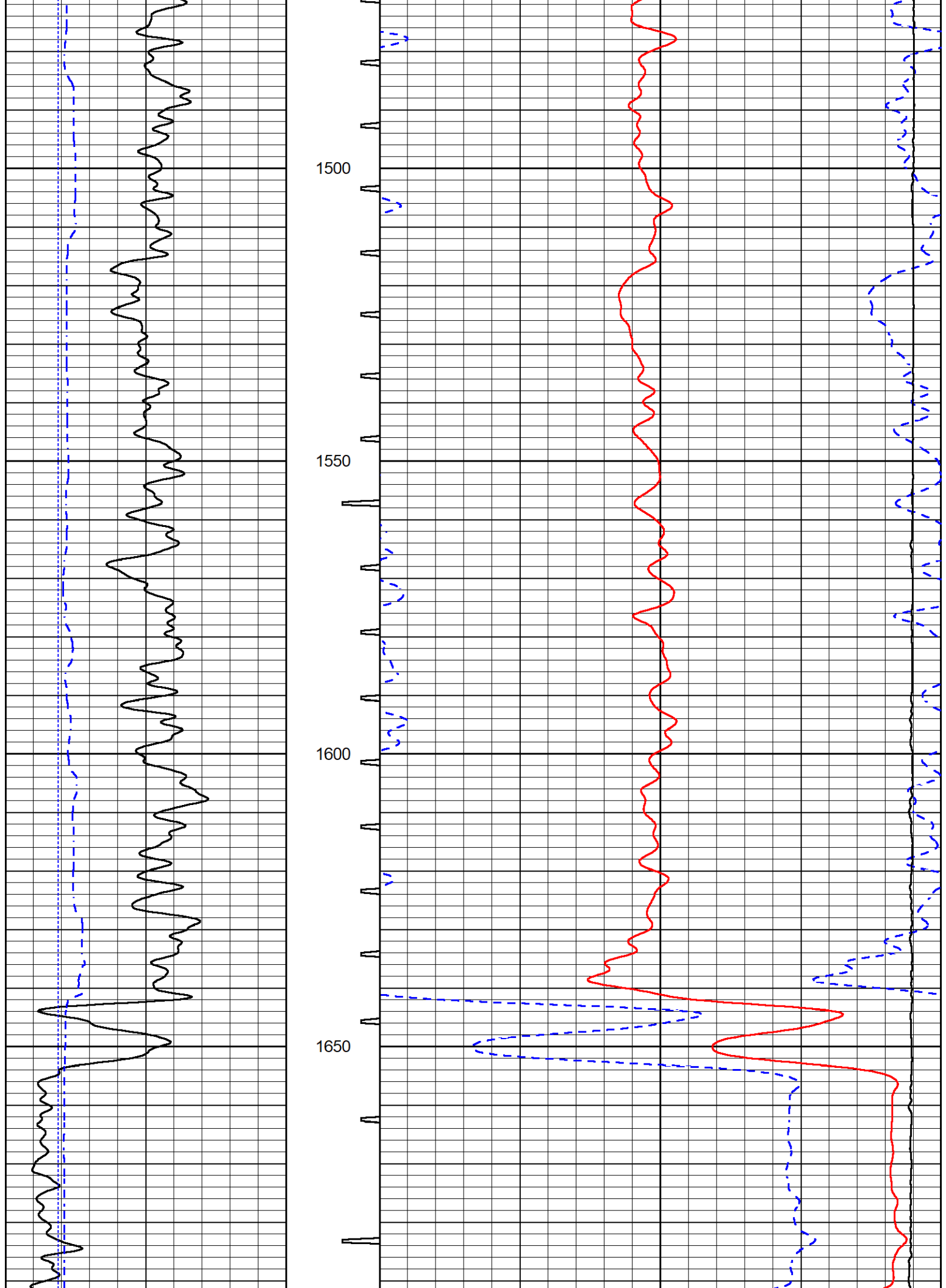


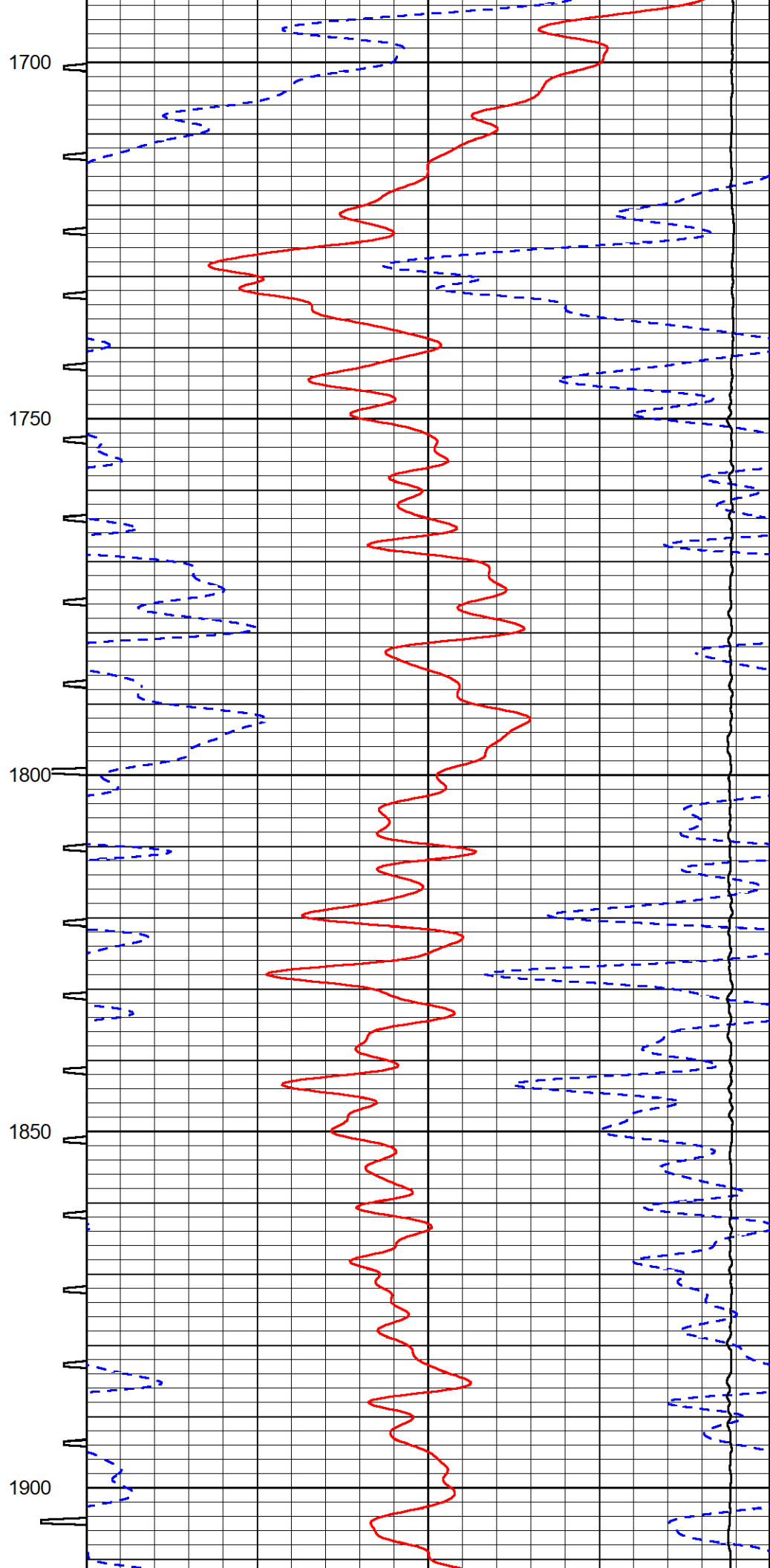
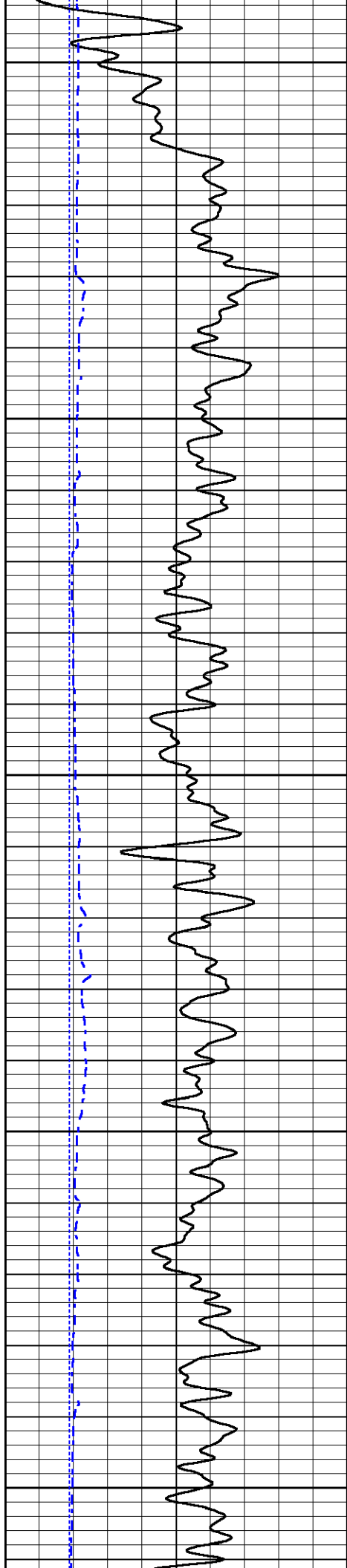


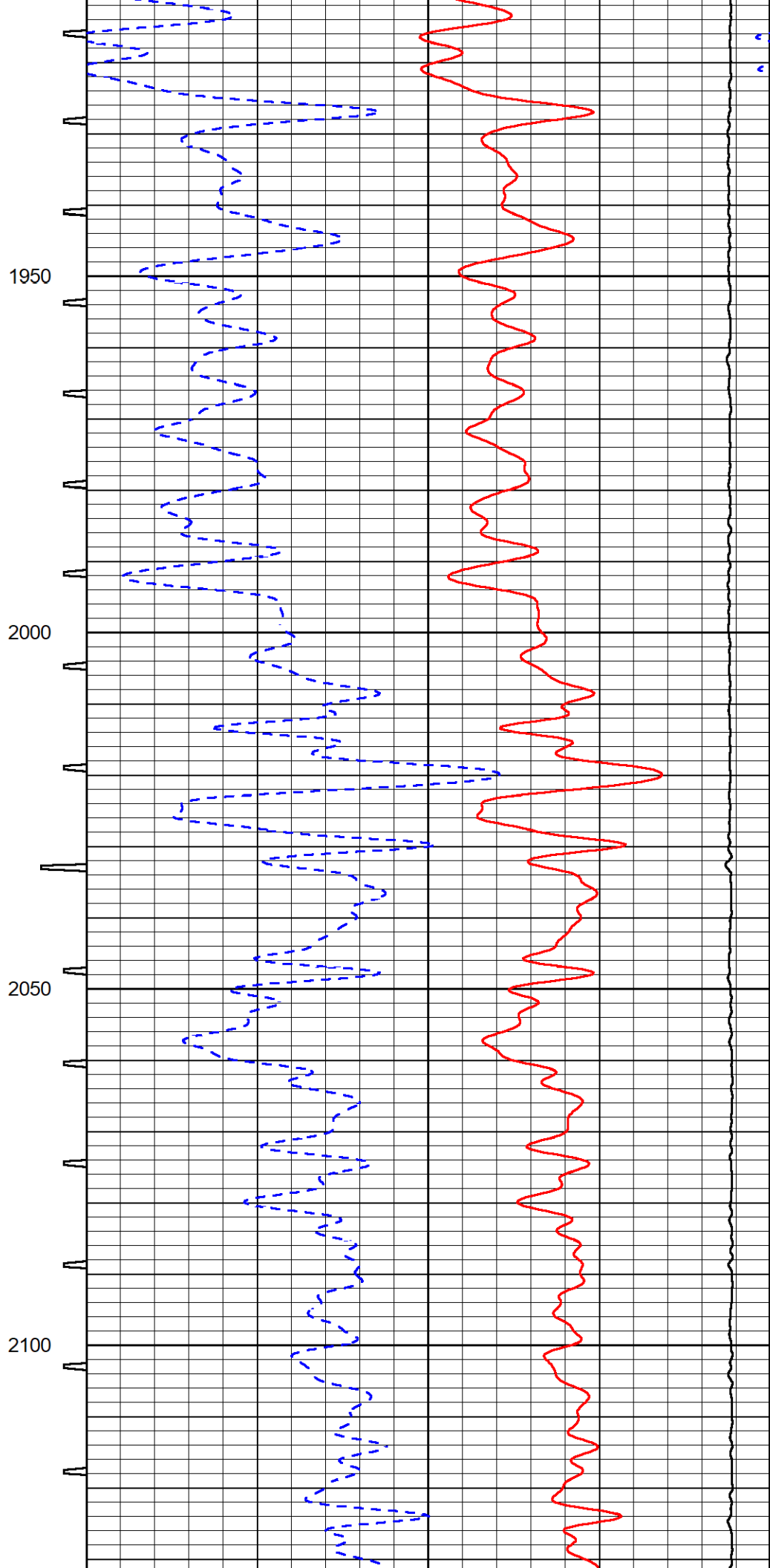
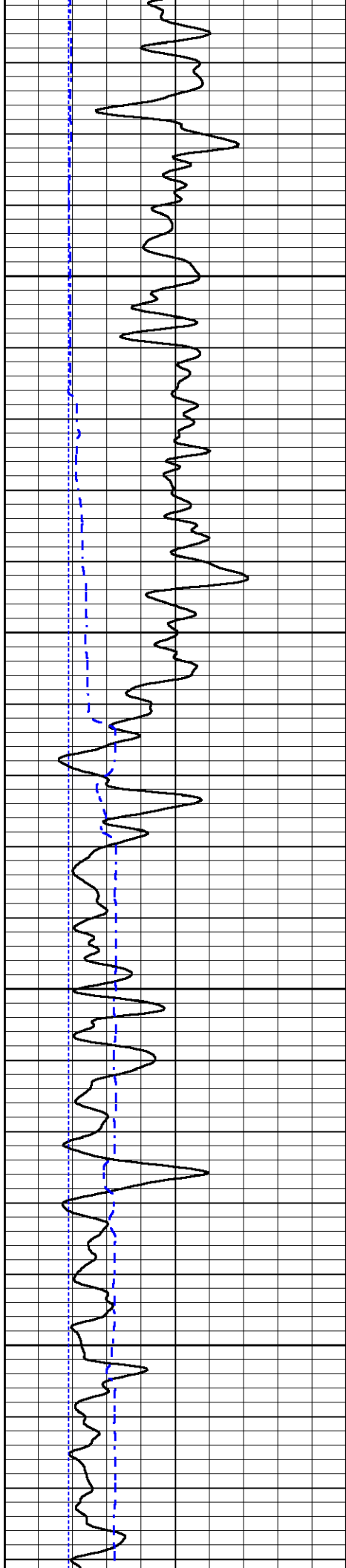


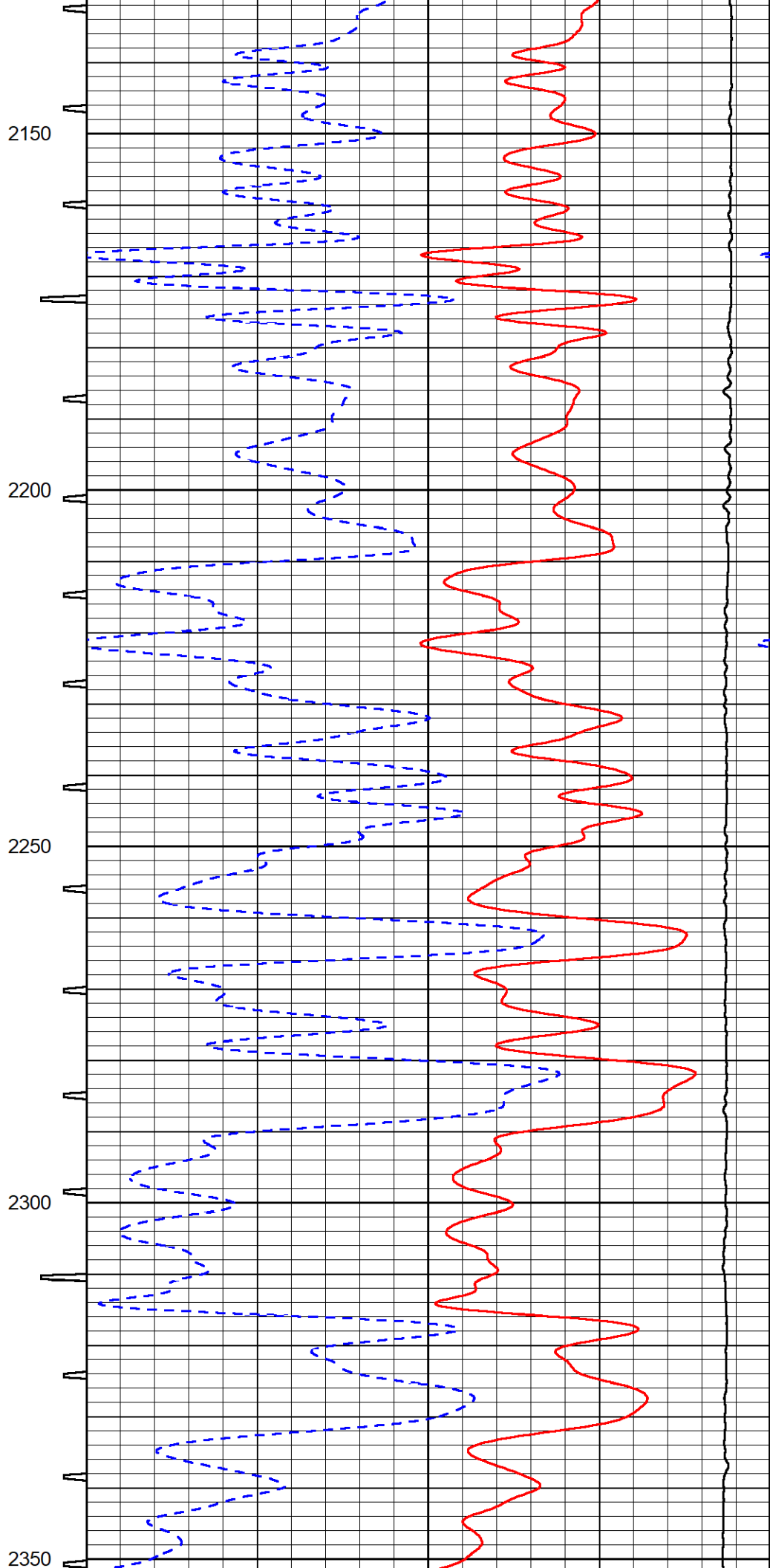
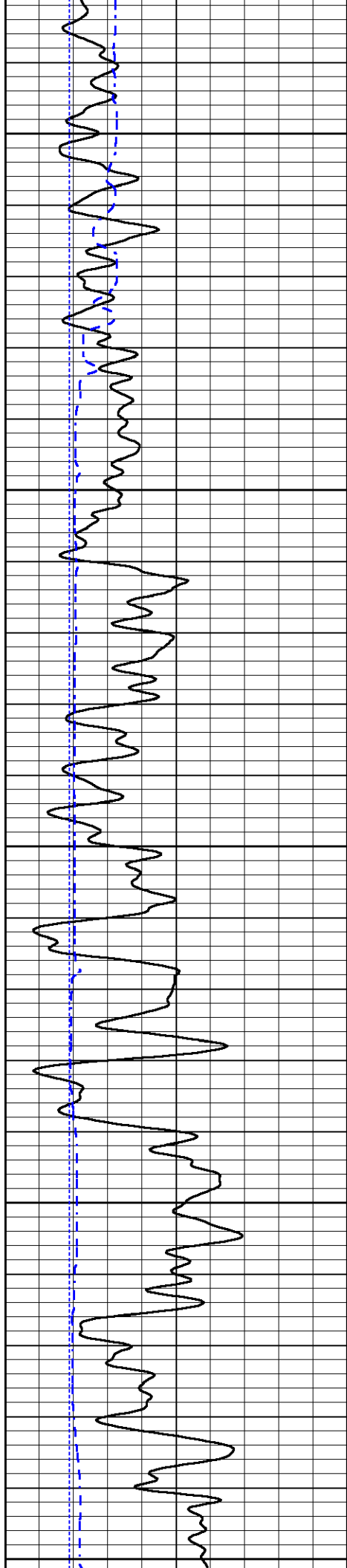


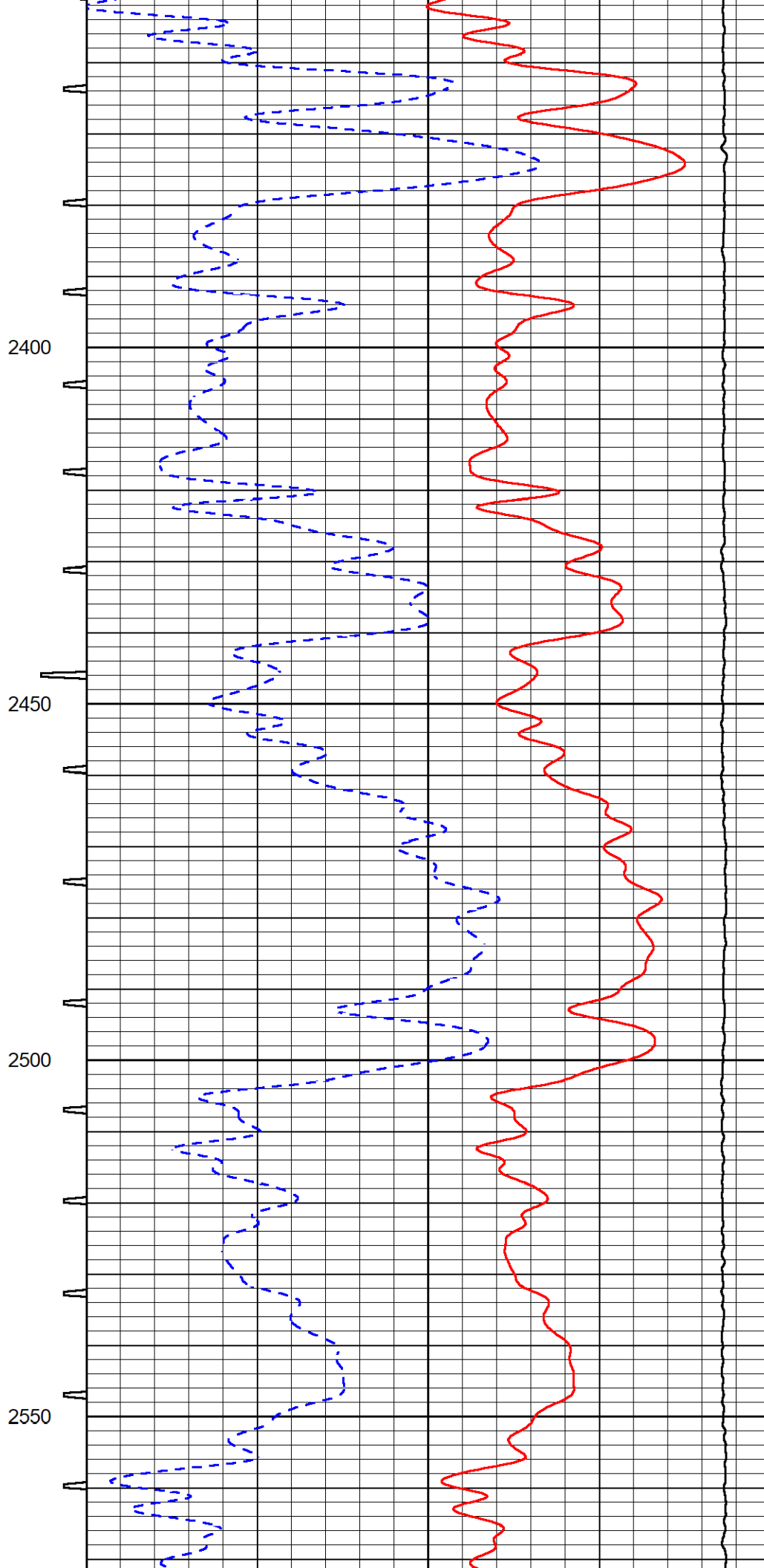
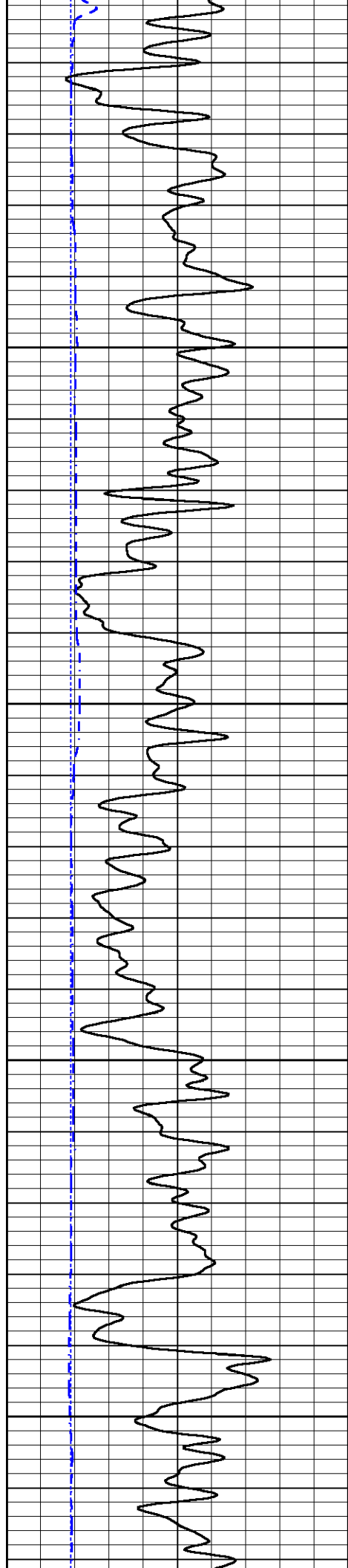


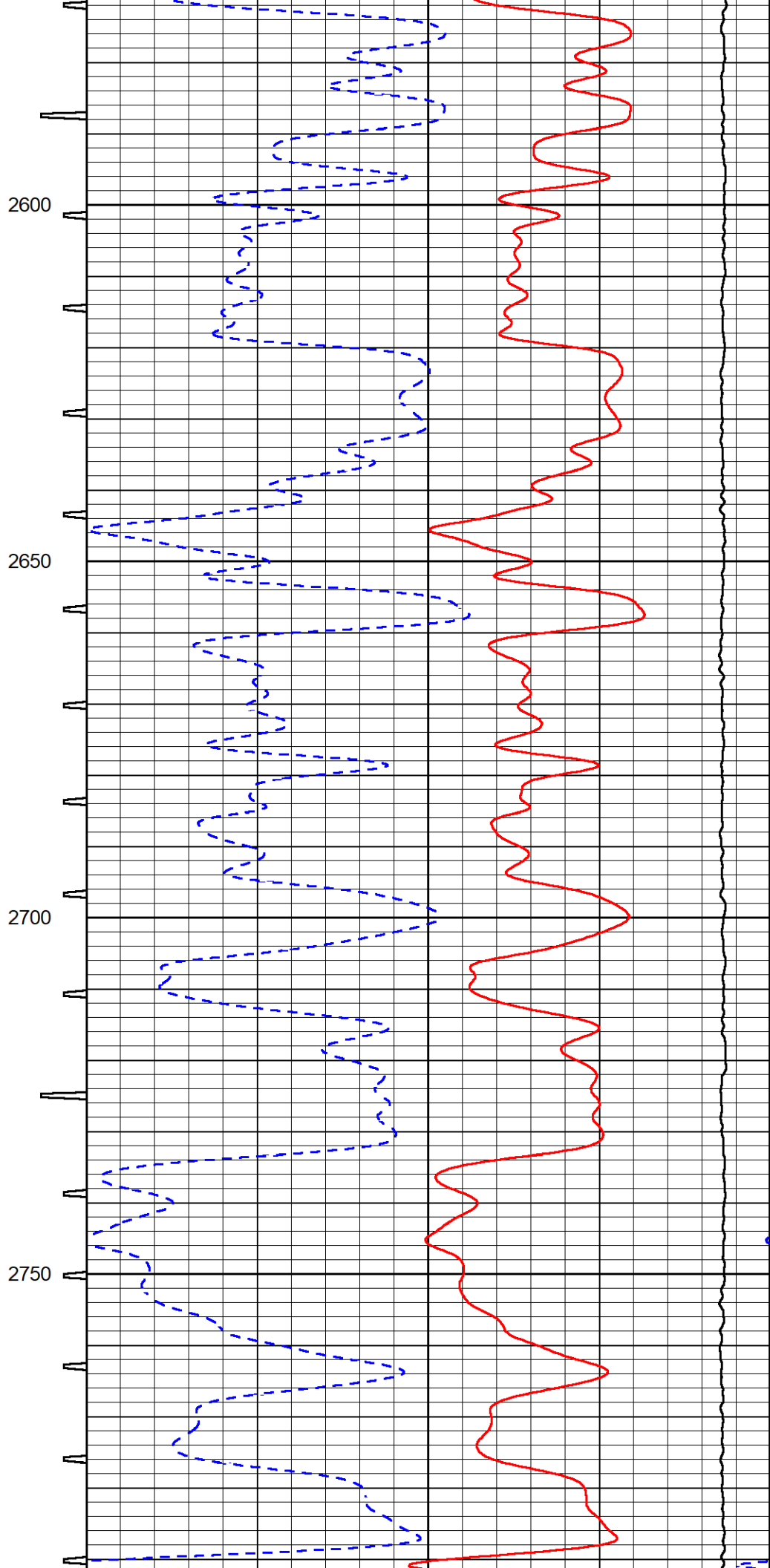
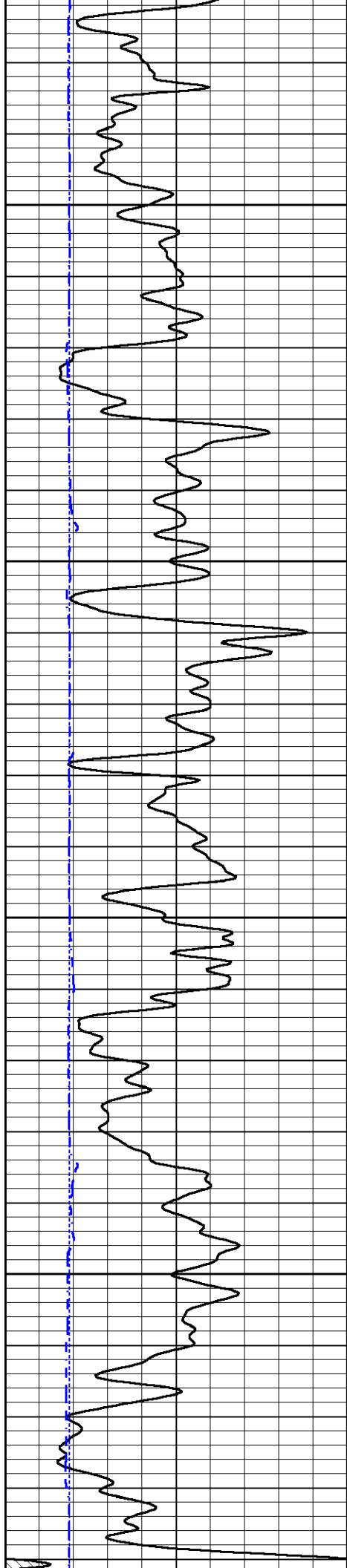


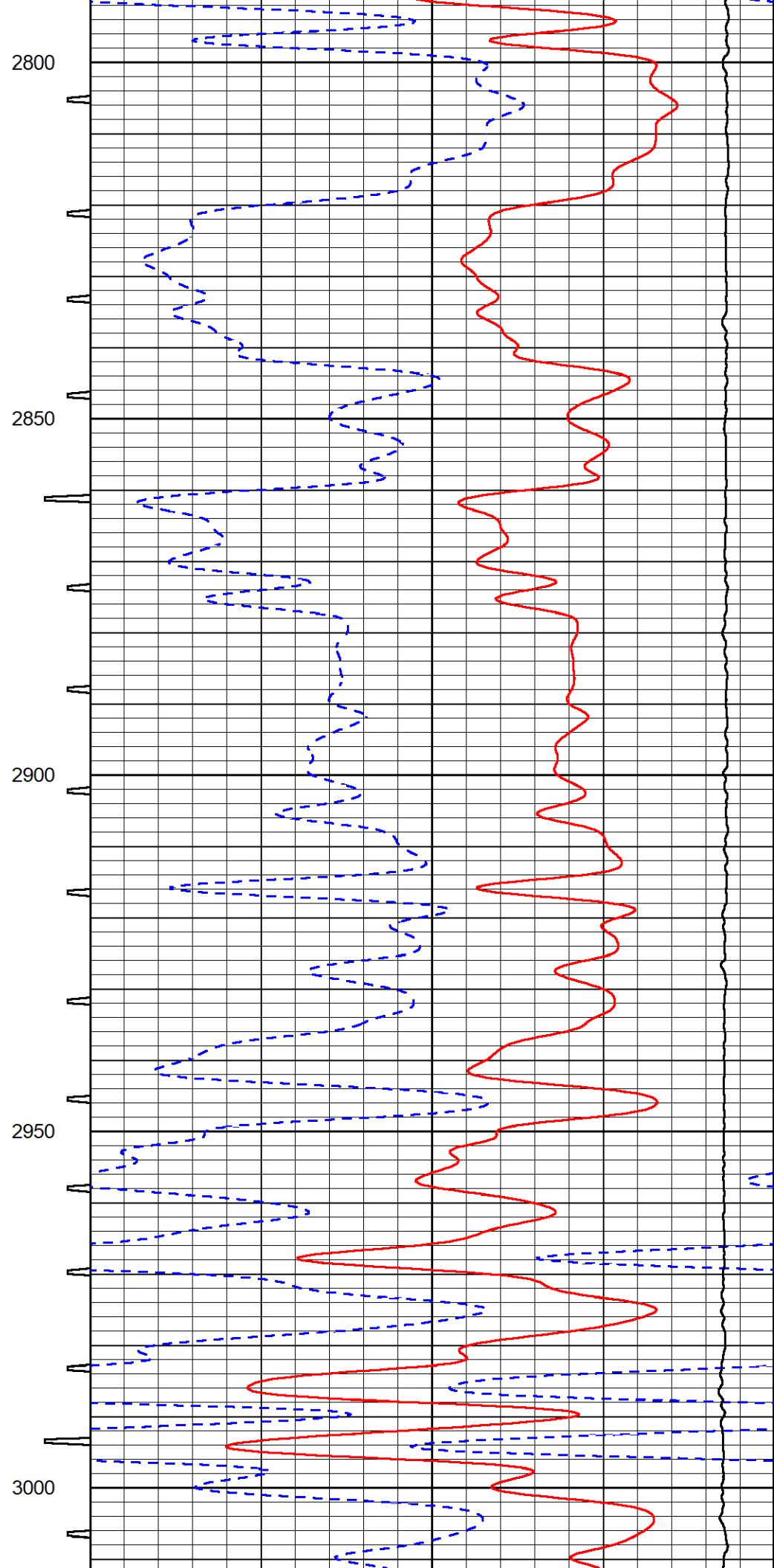
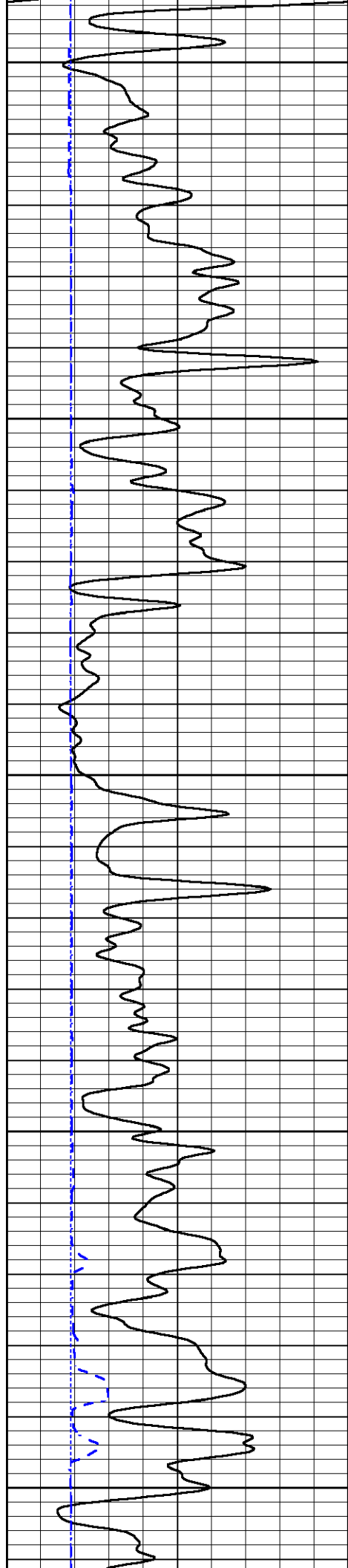


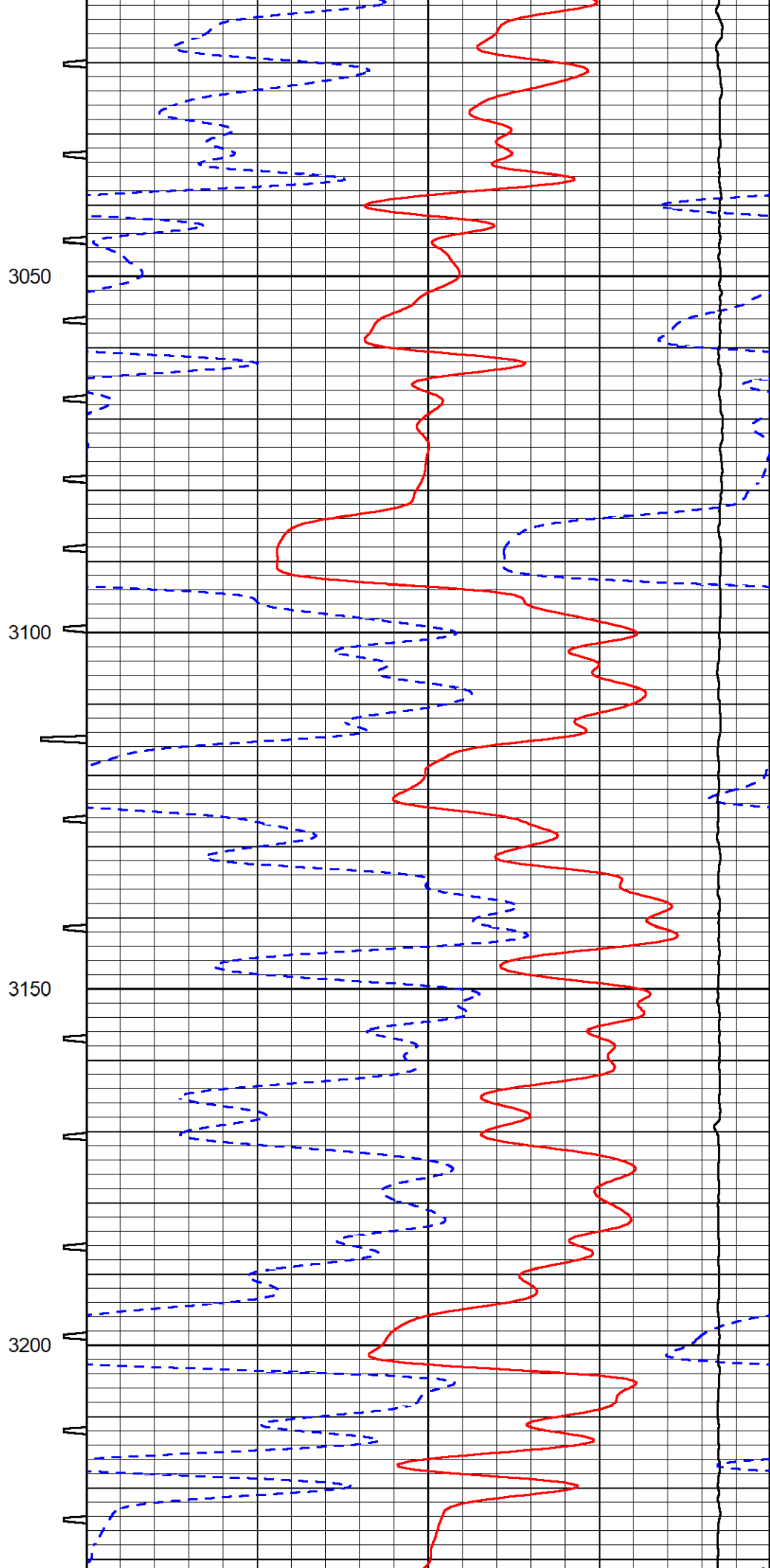
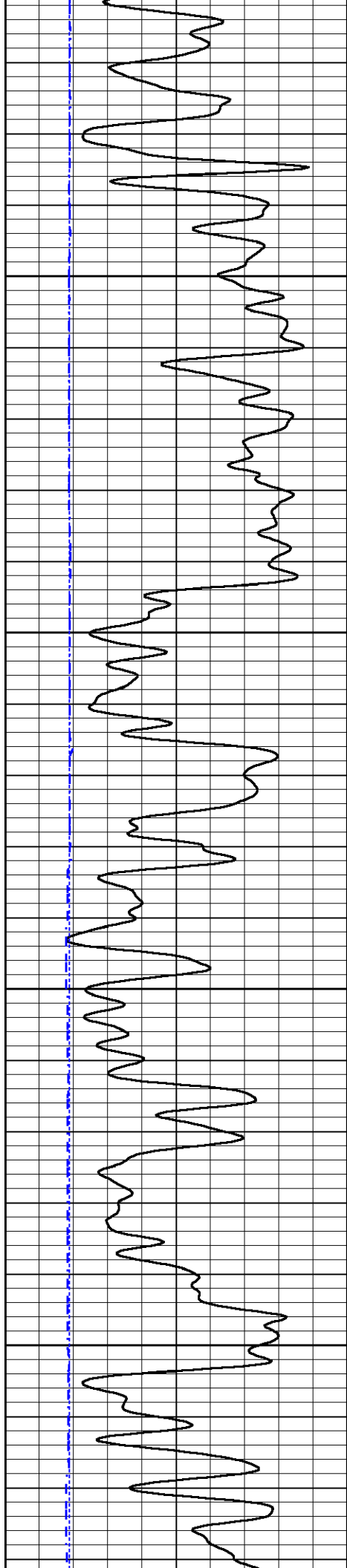


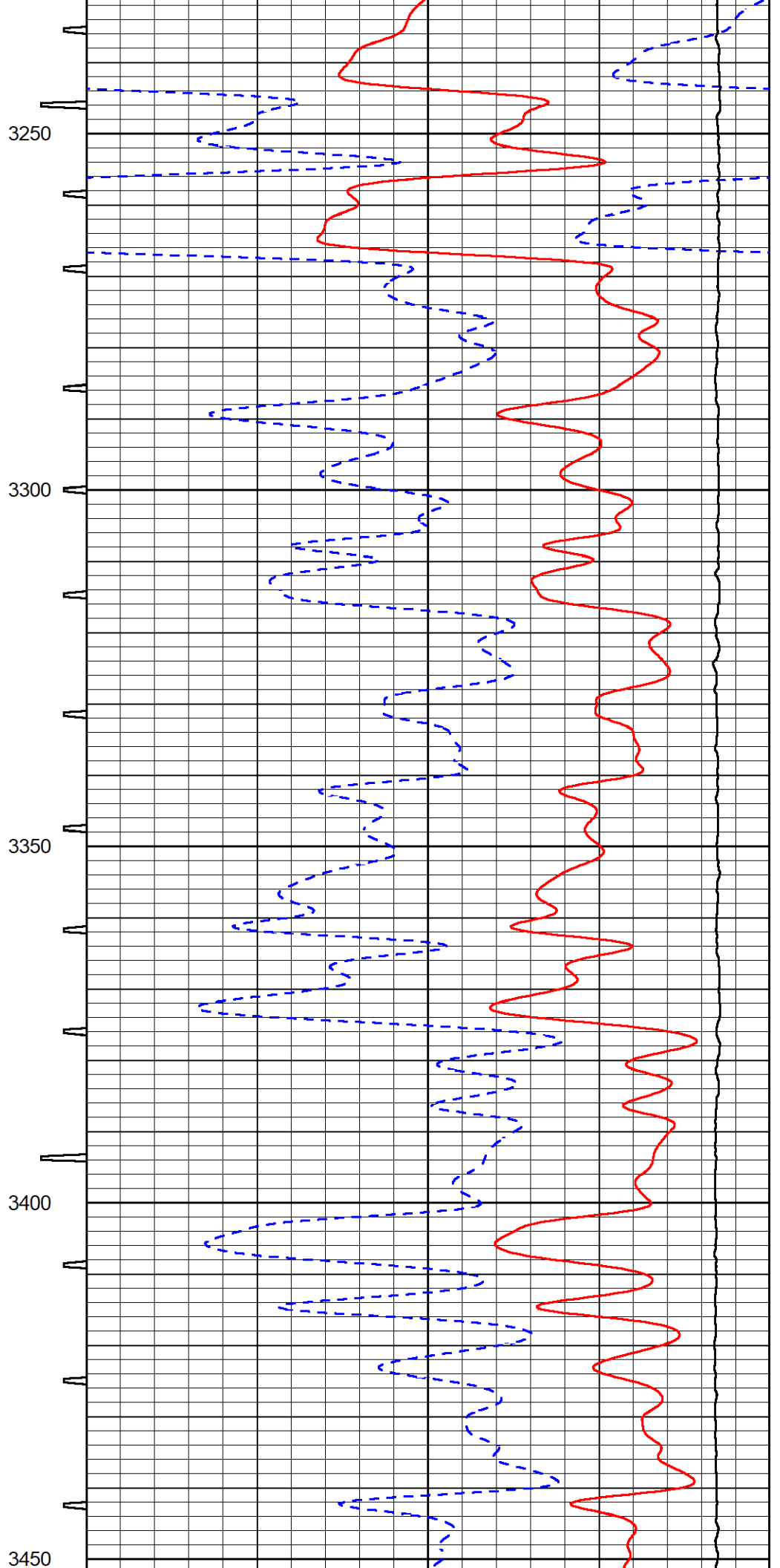
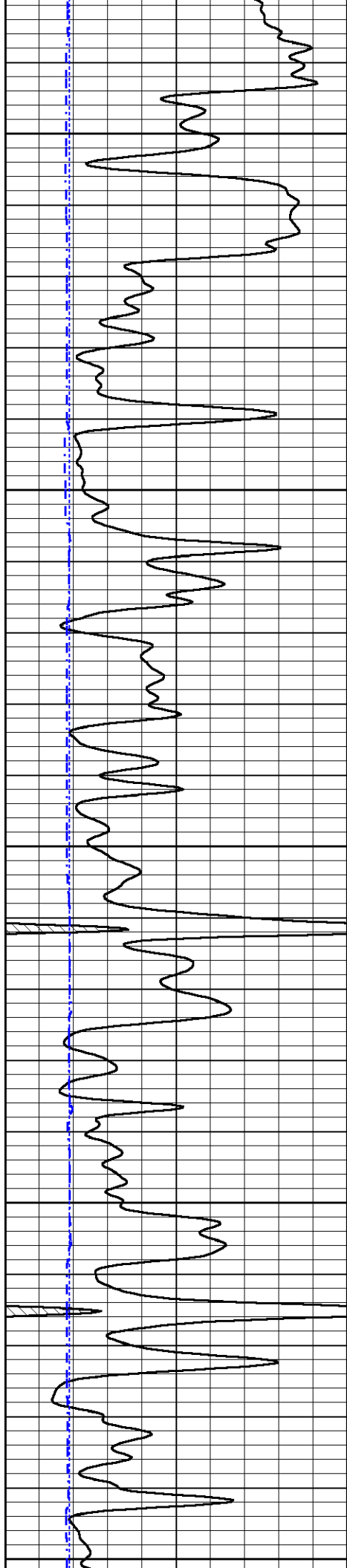


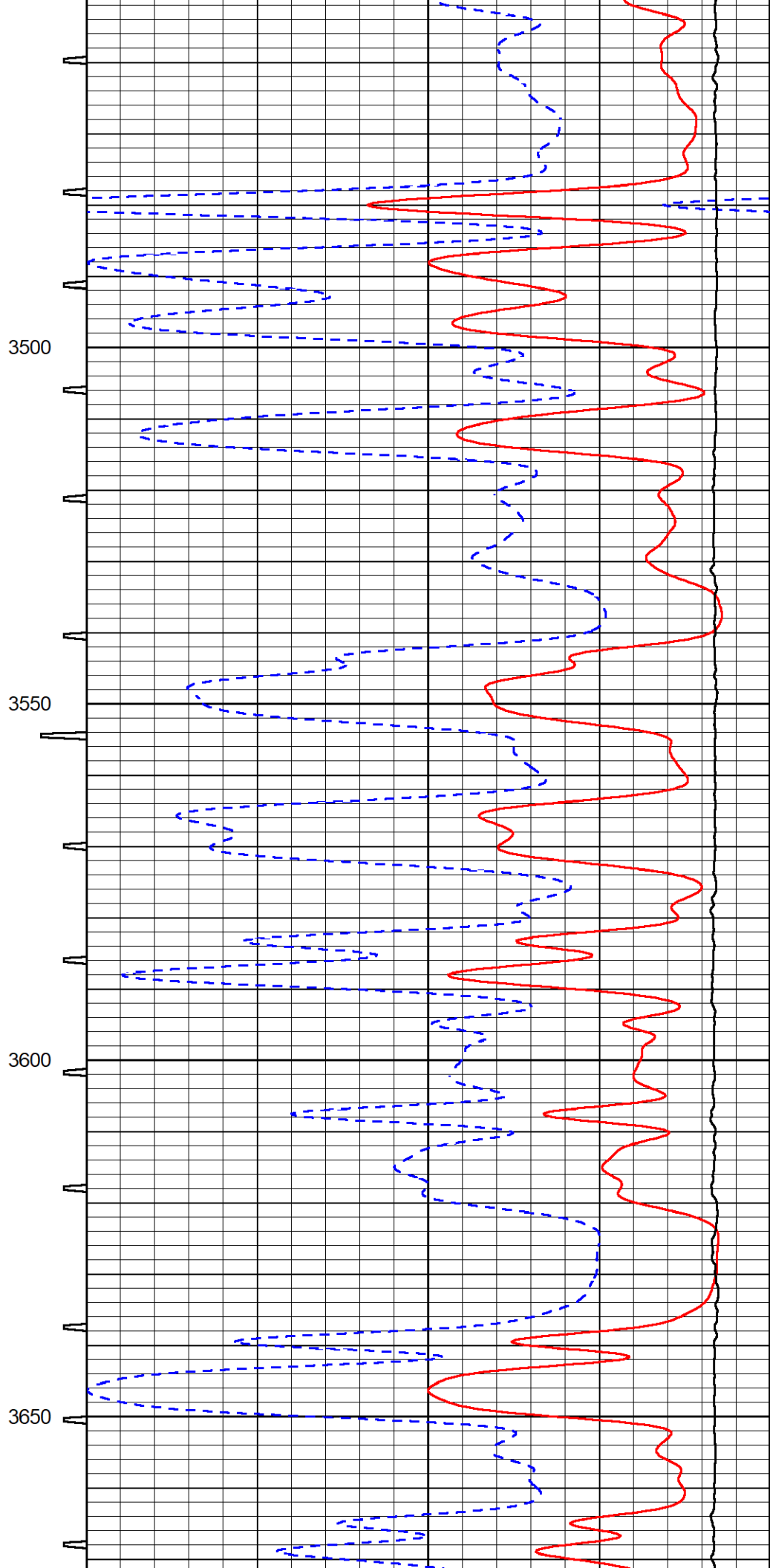
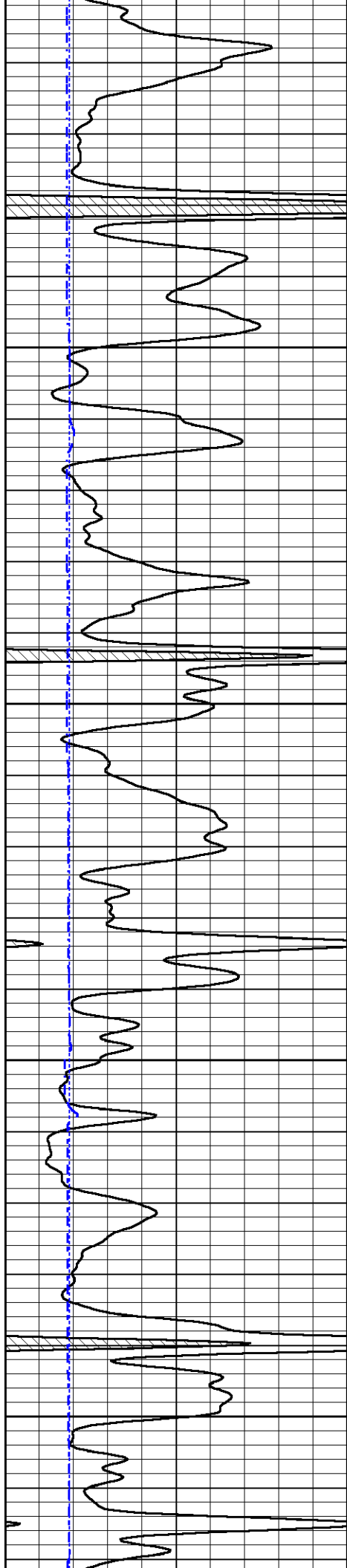


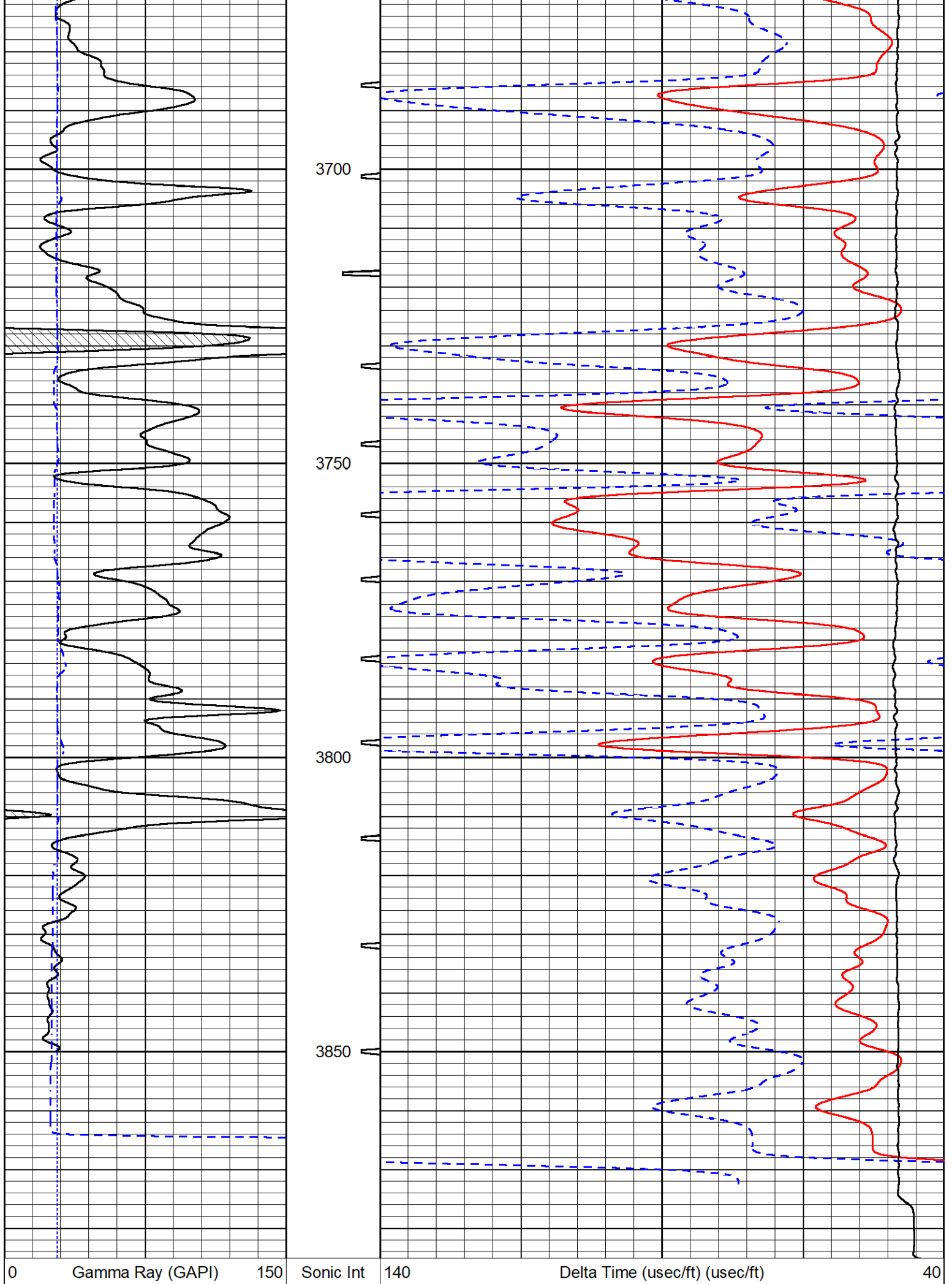












150	GR (GAPI)	300	5 (msec)	0	30	Sonic Porosity (pu)	-10
6	DCAL (in)	16			15000	LTEN (lb) (lb)	0



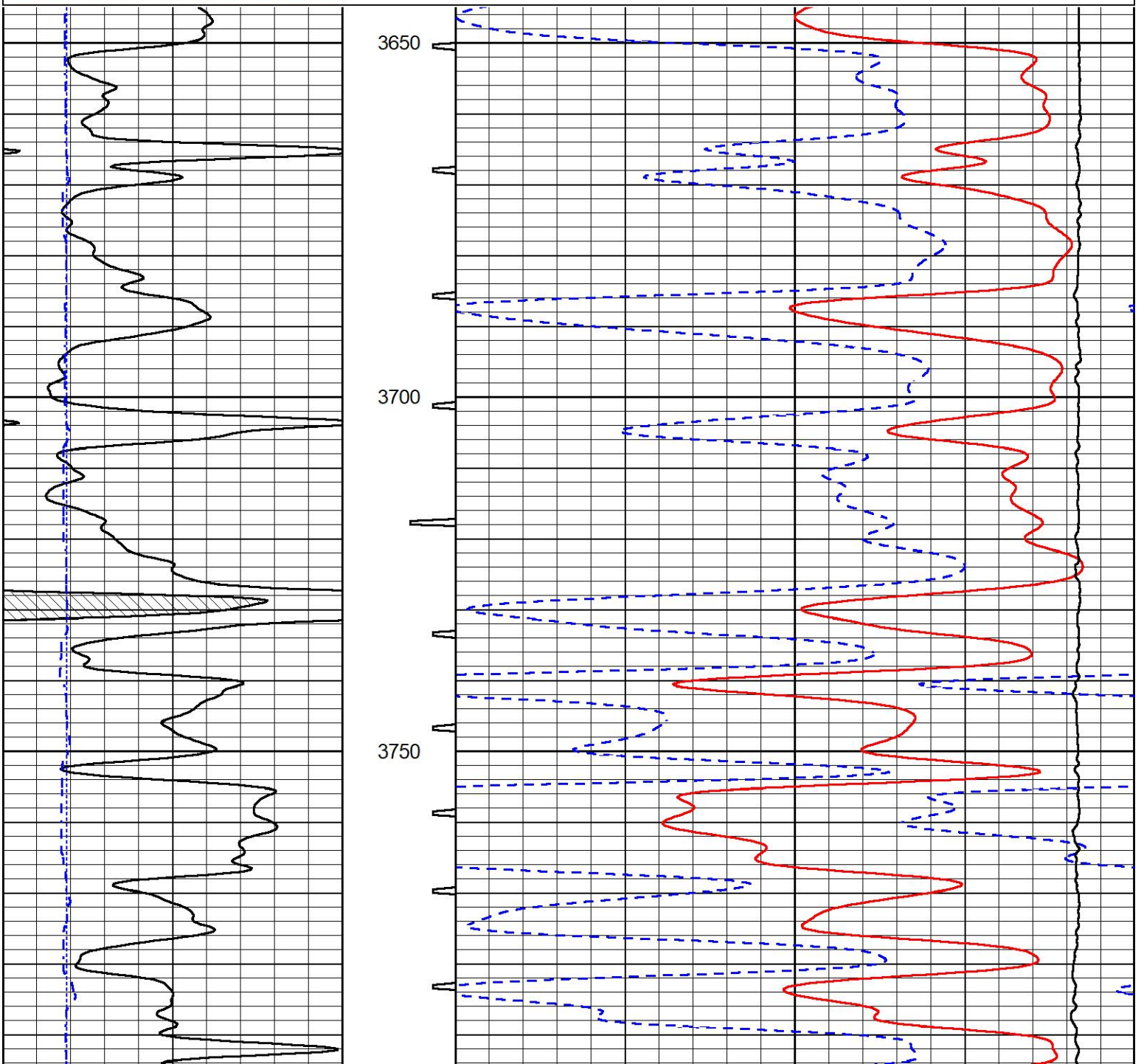
MIDWEST WIRELINE

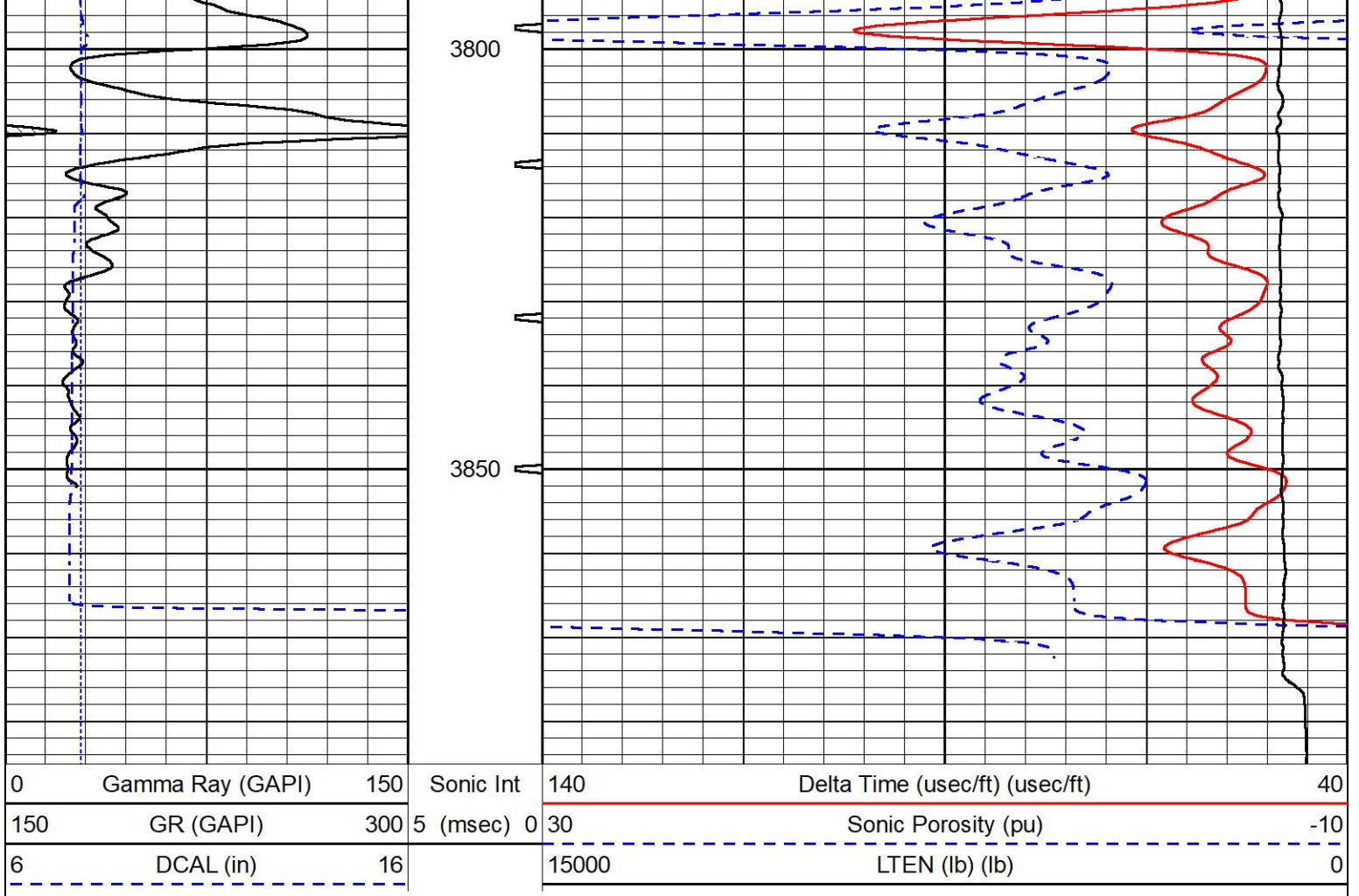
# REPEAT SECTION

## REPEAT PASS

Database File cholla\_wrangler 1-24.db  
 Dataset Pathname stack/pass3.2  
 Presentation Format \_sonic  
 Dataset Creation Mon Aug 30 07:42:12 2021  
 Charted by Depth in Feet scaled 1:240

0	Gamma Ray (GAPI)	150	Sonic Int	140	Delta Time (usec/ft) (usec/ft)	40
150	GR (GAPI)	300	5 (msec)	0	Sonic Porosity (pu)	-10
6	DCAL (in)	16		15000	LTEN (lb) (lb)	0





Company Cholla Production, LLC  
 Well Wrangler #1-24  
 Field Nicholson  
 County Trego  
 State Kansas