



MIDWEST WIRELINE

# DUAL COMP POROSITY LOG

Company Cholla Production, LLC  
 Well Wrangler #1-24  
 Field Nicholson  
 County Trego State Kansas

Company Cholla Production, LLC  
 Well Wrangler #1-24  
 Field Nicholson  
 County Trego  
 State Kansas

Location: API #: 15-195-23116-00-00  
 1203' FSL & 2493' FEL  
 SEC 24 TWP 11S RGE 21W  
 Permanent Datum Ground Level Elevation 2233.5'  
 Log Measured From Kelly Bushing K.B. 2241.5'  
 Drilling Measured From Kelly Bushing G.L. 2233.5'

Other Services  
 DIL/MEL  
 BHCS

Date	8/30/2021						
Run Number	One						
Type Log	CNL/CDL						
Depth Driller	3875'						
Depth Logger	3875'						
Bottom Logged Interval	3854'						
Top Logged Interval	3000'						
Type Fluid In Hole	Chemical						
Salinity, PPM CL	4900						
Density	9.4						
Level	Full						
Max. Rec. Temp. F	115						
Operating Rig Time	4 Hours						
Equipment -- Location	P-24 HAYS						
Recorded By	D. Schmidt						
Witnessed By	Charlie Sturdavant						
Borehole Record							
Run No.	Bit	From	To	Size	Wgt.	From	To
One	12.25"	0'	305'	8.625"	23#	0'	305'
Two	7.875"	305'					
Casing Record							

<<< Fold Here >>>

All interpretations are opinions based on inferences from electrical or other measurements and Midwest Wireline Services, LLC cannot and does not guarantee the accuracy or correctness of any interpretation, and Midwest Wireline Services, LLC will not be liable or responsible for any loss, costs, damages, or expenses incurred or sustained by anyone resulting from any interpretation made by any of our officers, agents or employees.

Comments

N/A DENOTES NOT AVAILABLE OR NON-APPLICABLE.

Ellis,  
 North to Sleepy Hollow Rd,  
 West to county line, 1.6 North,  
 West into

Log Measured From: Kelly Bushing 8 Ft. Above Permanent Datum

THANK YOU FOR USING MIDWEST WIRELINE LLC  
 785-625-3858

Your Midwest Wireline Crew		This Log Record Was Witnessed By	
Engineer: D. Schmidt	Operator:	Primary Witness: Charlie Sturdavant	Secondary Witness:
Operator:	Operator:	Secondary Witness:	Secondary Witness:
Operator:		Secondary Witness:	

Sensor	Offset (ft)	Schematic	Description	Length (ft)	O.D. (in)	Weight (lb)
GR	33.00		GR-M&W (233-M&W)	3.00	3.50	50.00
CNLSC CNSSC	29.90 29.15		CNT-M&W (207-MW)	5.50	3.50	100.00
LSD DCAL SSD	20.85 20.83 20.35		CDL-M&W (934-226)	8.50	4.00	250.00
RLL3F RLL3	15.80 15.80		DIL-PSI HIGH TEMP (952-828)	18.50	3.50	220.00
CILD	8.00					
CILM	4.70					
SP	0.20					

Dataset: cholla\_wrangler 1-24.db: field/well/stack/pass4.1  
 Total length: 35.50 ft  
 Total weight: 620.00 lb  
 O.D.: 4.00 in

# Log Variables

DatabaseC:\ProgramData\Warrior\Data\cholla\_wrangler 1-24.db  
 Dataset field/well/stack/pass4.1/\_vars\_

## Top - Bottom

A	BOREID in	BOTTEMP degF	CASEOD in	CASETHCK in	FLUIDDEN g/cc	M	MATRXDEN g/cc
1	7.875	115	5.5	0	1	2	2.71
NPORSEL	PERFS	SNDERR mmho/m	SNDERRM mmho/m	SPSHIFT mV	SRFTEMP degF	SZCOR	TDEPTH ft
Limestone	0	0	0	355	80	Off	3875

## Variable Description

A : Cement Factor (a)  
 BOREID : Borehole I.D.  
 BOTTEMP : Bottom Hole Temperature  
 CASEOD : Casing O.D.  
 CASETHCK : Casing Thickness  
 FLUIDDEN : Fluid Density  
 M : Cement Exp (m)  
 MATRXDEN : Matrix Density

NPORSEL : Neutron Porosity Curve Select  
 PERFS : Perforation Flag  
 SNDERR : Deep Sonde Error Correction  
 SNDERRM : Medium Sonde Error Correction  
 SPSHIFT : S.P. Baseline Offset  
 SRFTEMP : Surface Temperature  
 SZCOR : CN Size Cor. ?  
 TDEPTH : Total Depth



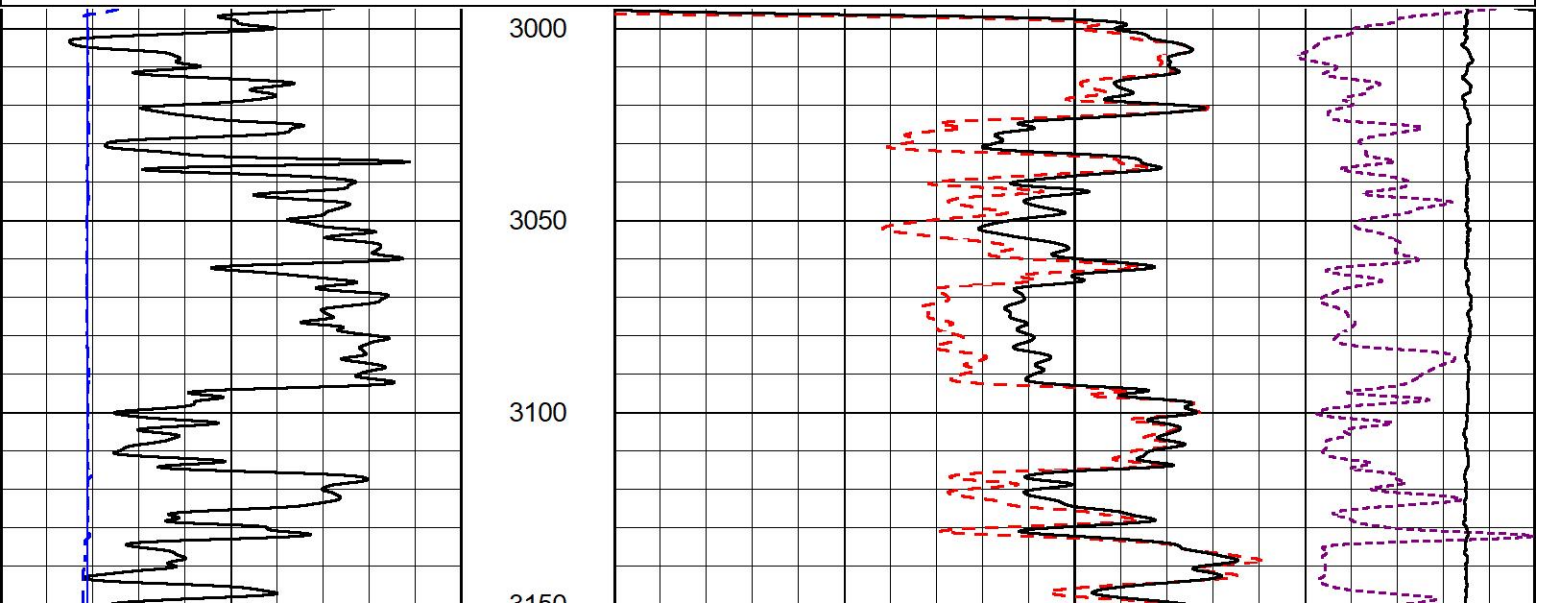
## 2" SCALE BULK DENSITY

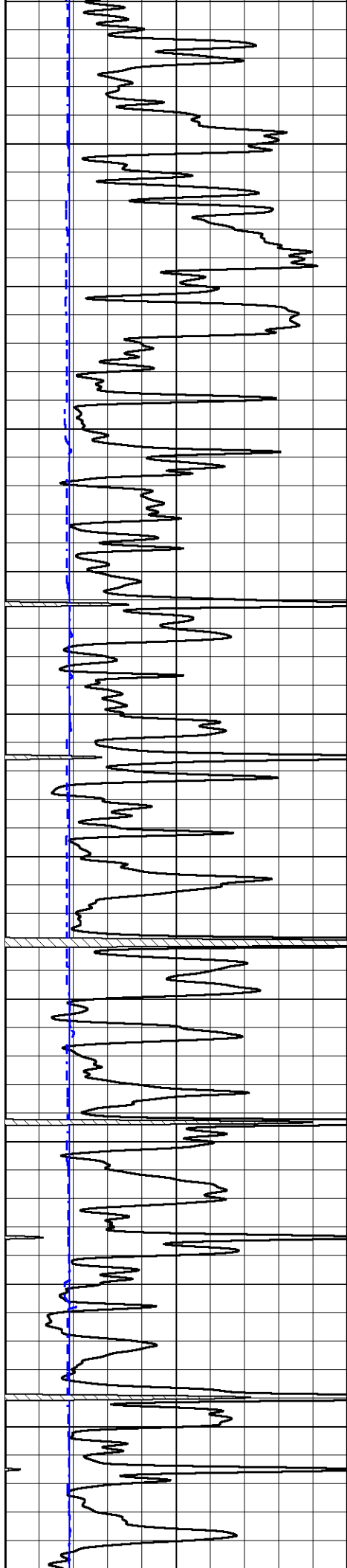
### MAIN PASS

Database File cholla\_wrangler 1-24.db  
 Dataset Pathname stack/pass5.1  
 Presentation Format \_cdl  
 Dataset Creation Mon Aug 30 07:40:19 2021  
 Charted by Depth in Feet scaled 1:600

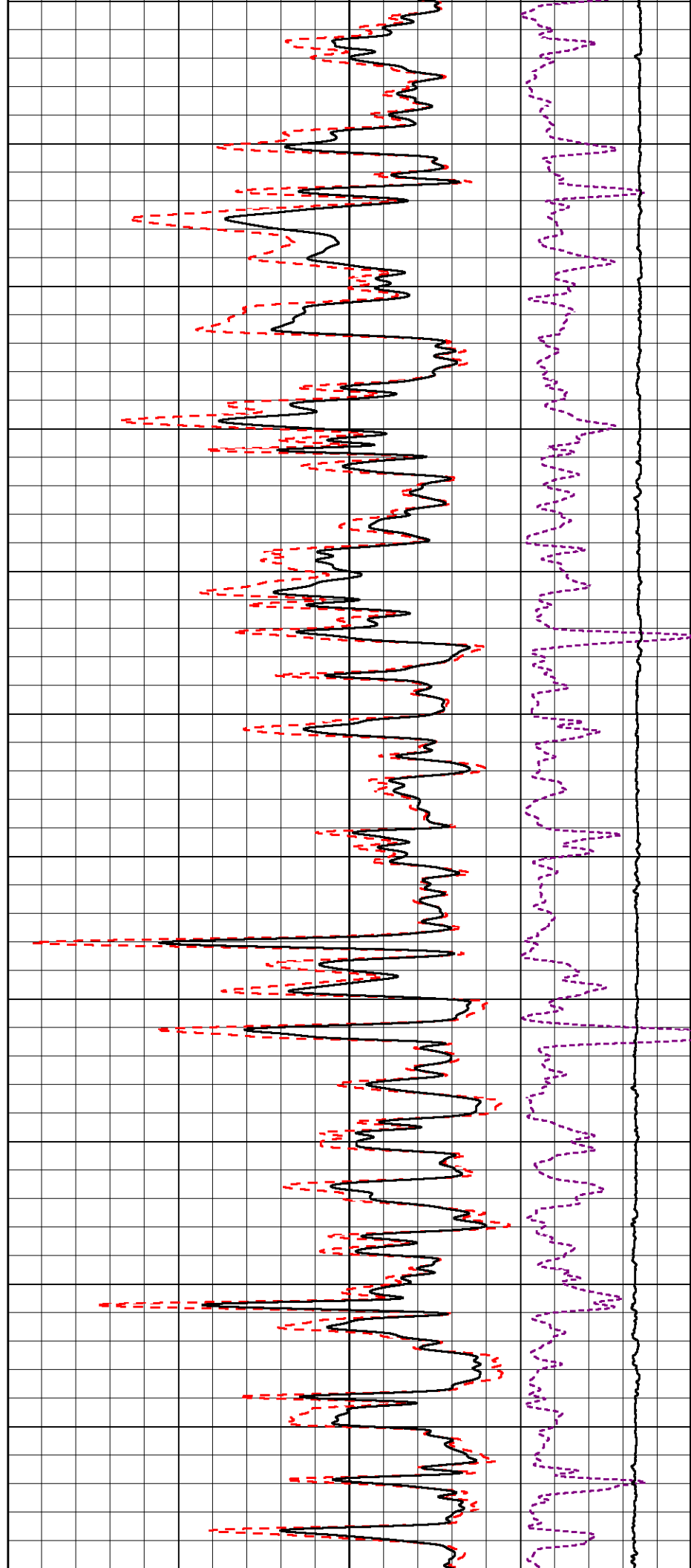
0	GAMMA RAY (GAPI)	150
6	DCAL (in)	16

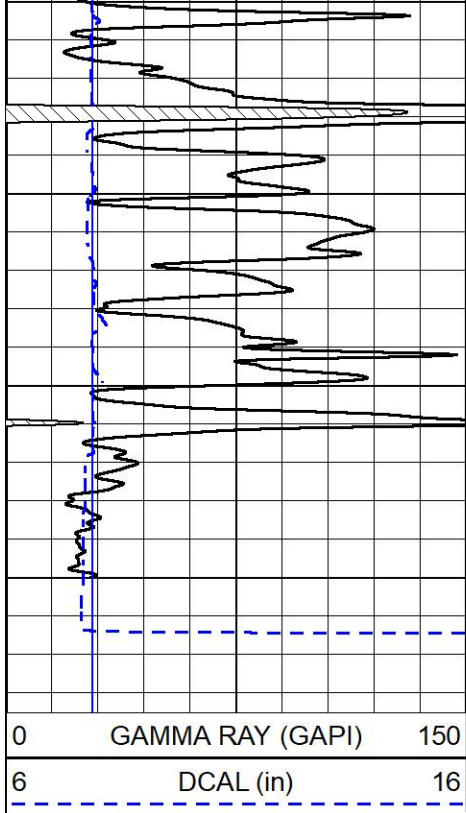
COMPENSATED DENSITY (2.65 MA)	
30	(pu) -10
2	BULK DENSITY (g/cc) 3
15000	LINE TENSION (lb) 0
-0.25	CORRECTION (g/cc) 0.25





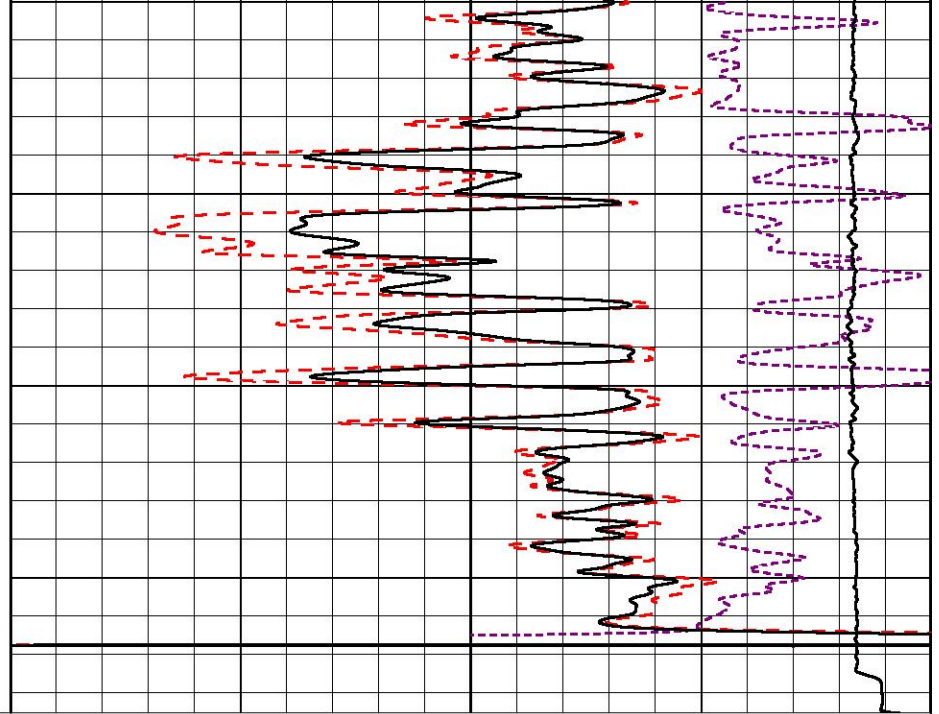
3150  
3200  
3250  
3300  
3350  
3400  
3450  
3500  
3550  
3600  
3650  
3700





3700  
3750  
3800  
3850

0	GAMMA RAY (GAPI)	150
6	DCAL (in)	16



30	COMPENSATED DENSITY (2.65 MA)	(pu)	-10
2	BULK DENSITY (g/cc)		3
15000	LINE TENSION (lb)		0
		-0.25 CORRECTION (g/cc)	0.25



MIDWEST WIRELINE

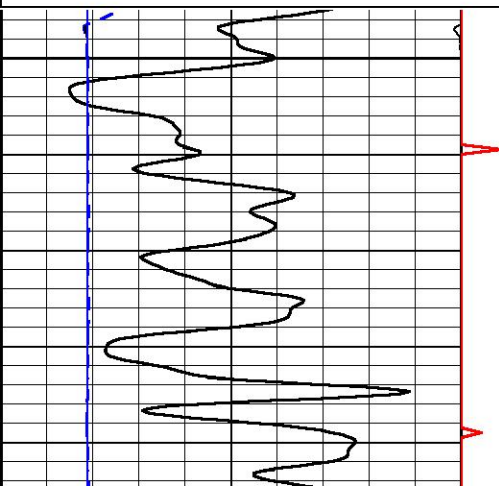
## DETAIL SECTION

### MAIN PASS

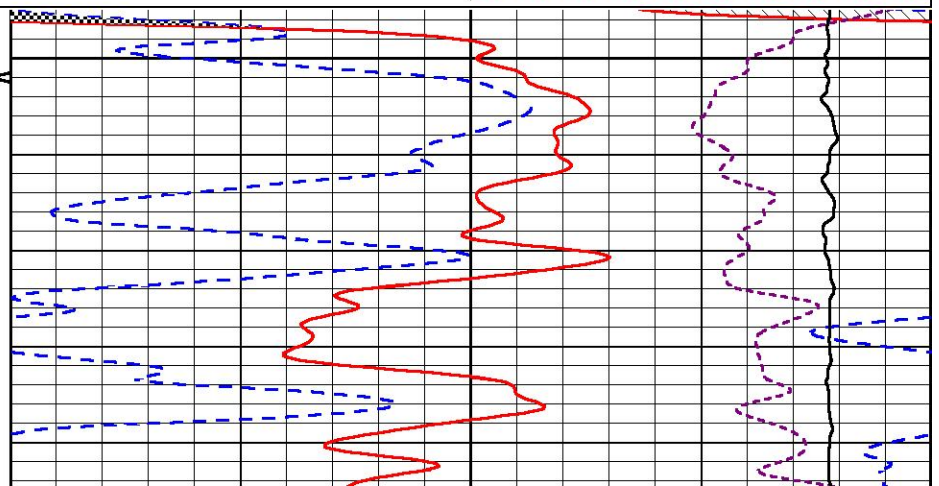
Database File cholla\_wrangler 1-24.db  
 Dataset Pathname stack/pass4.1  
 Presentation Format \_CNDLS~1  
 Dataset Creation Mon Aug 30 07:38:50 2021  
 Charted by Depth in Feet scaled 1:240

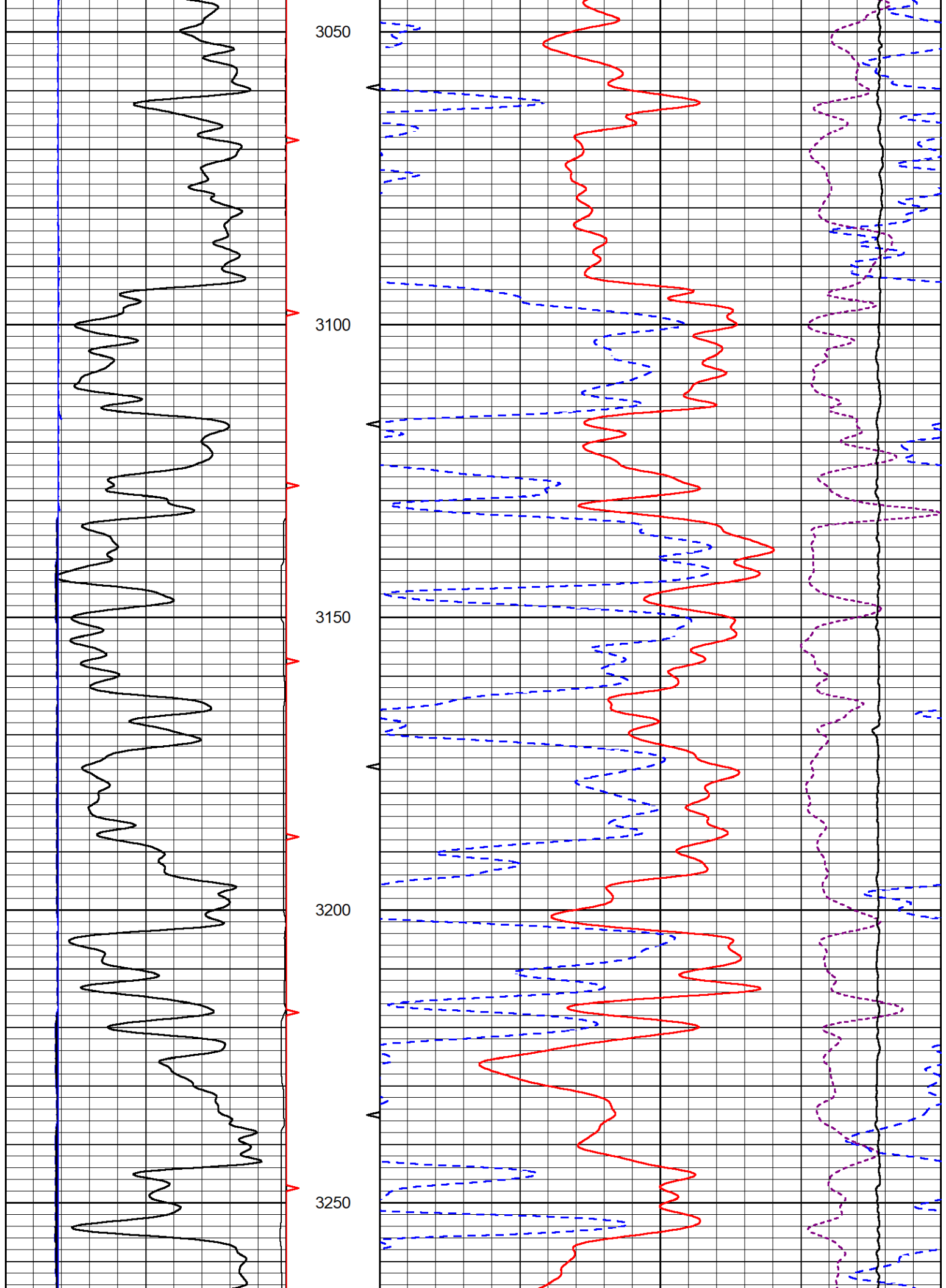
0	GAMMA RAY (GAPI)	150
6	DCAL (in)	16

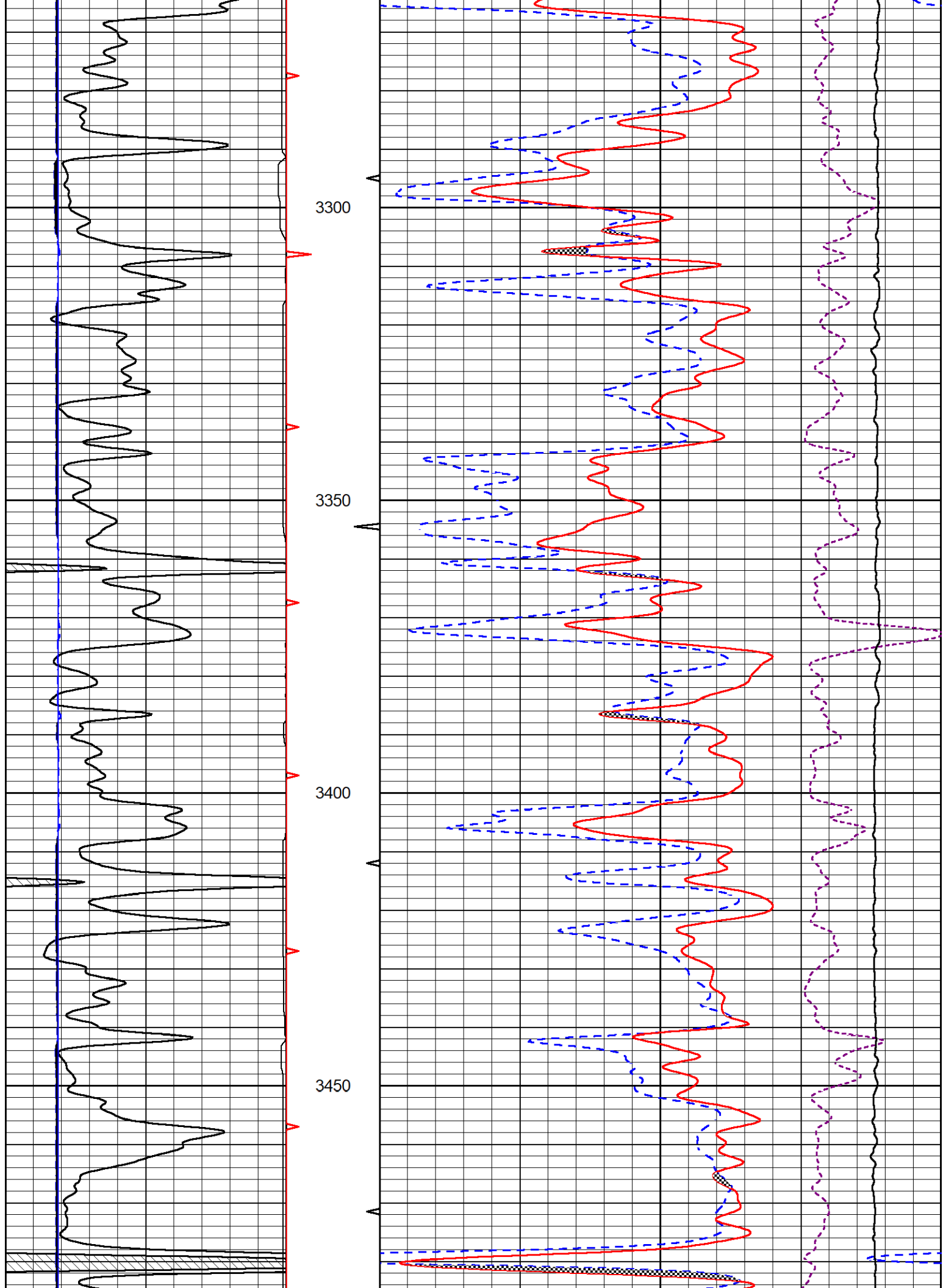
30	CNPOR (pu)	-10
30	DPOR (pu)	-10
10000	LINE TENSION (lb)	0
		-0.25 CORRECTION (g/cc) 0.25

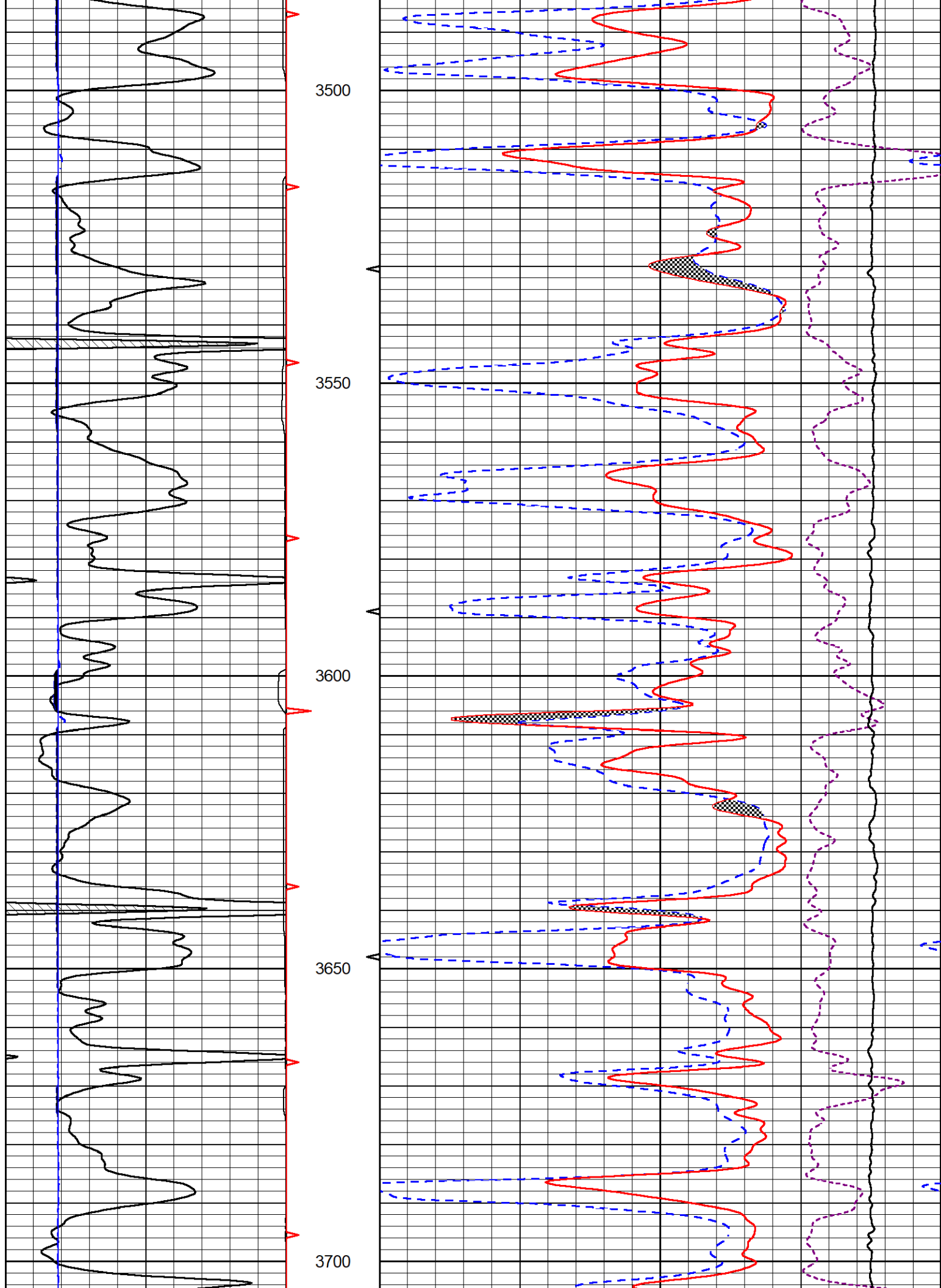


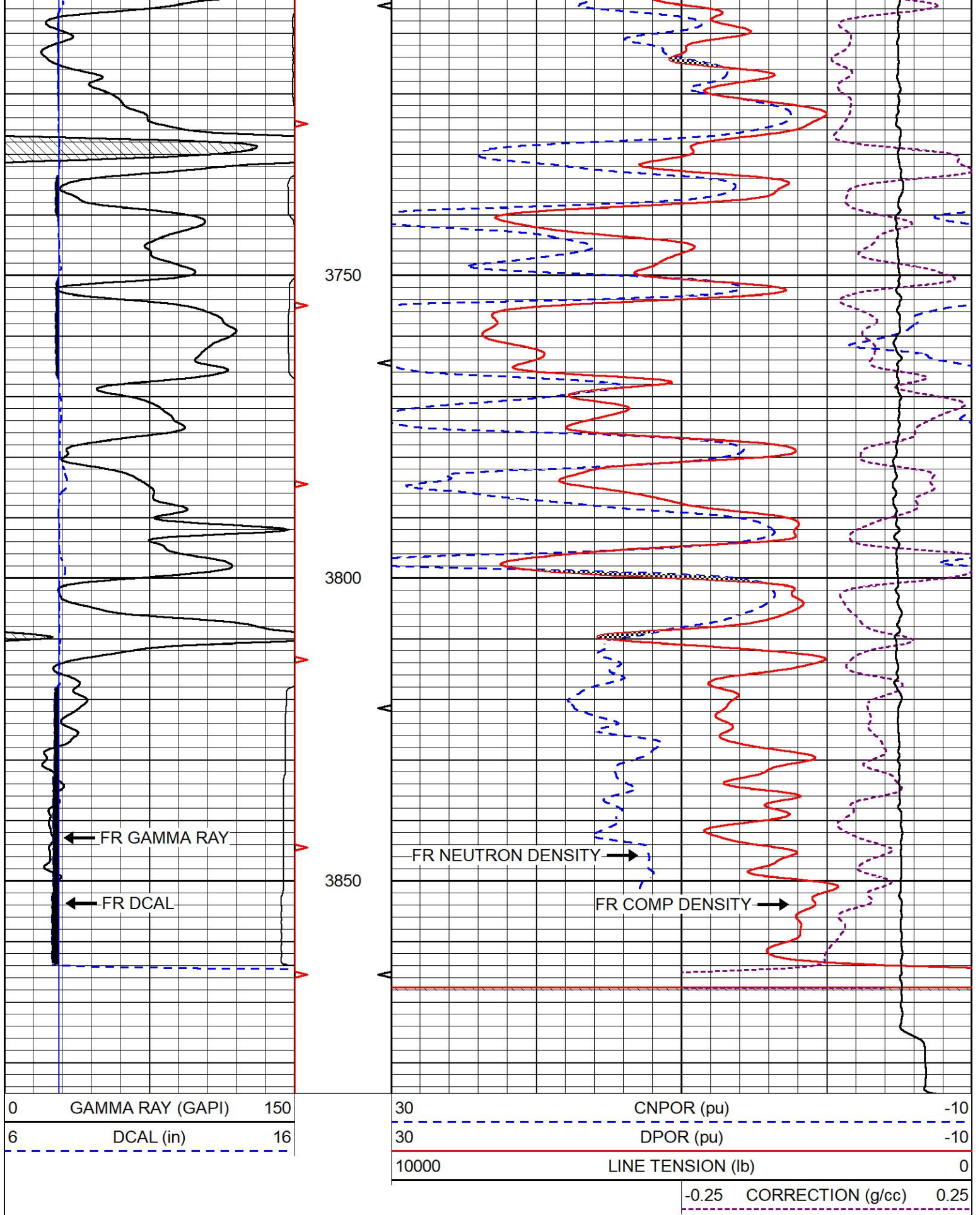
3000











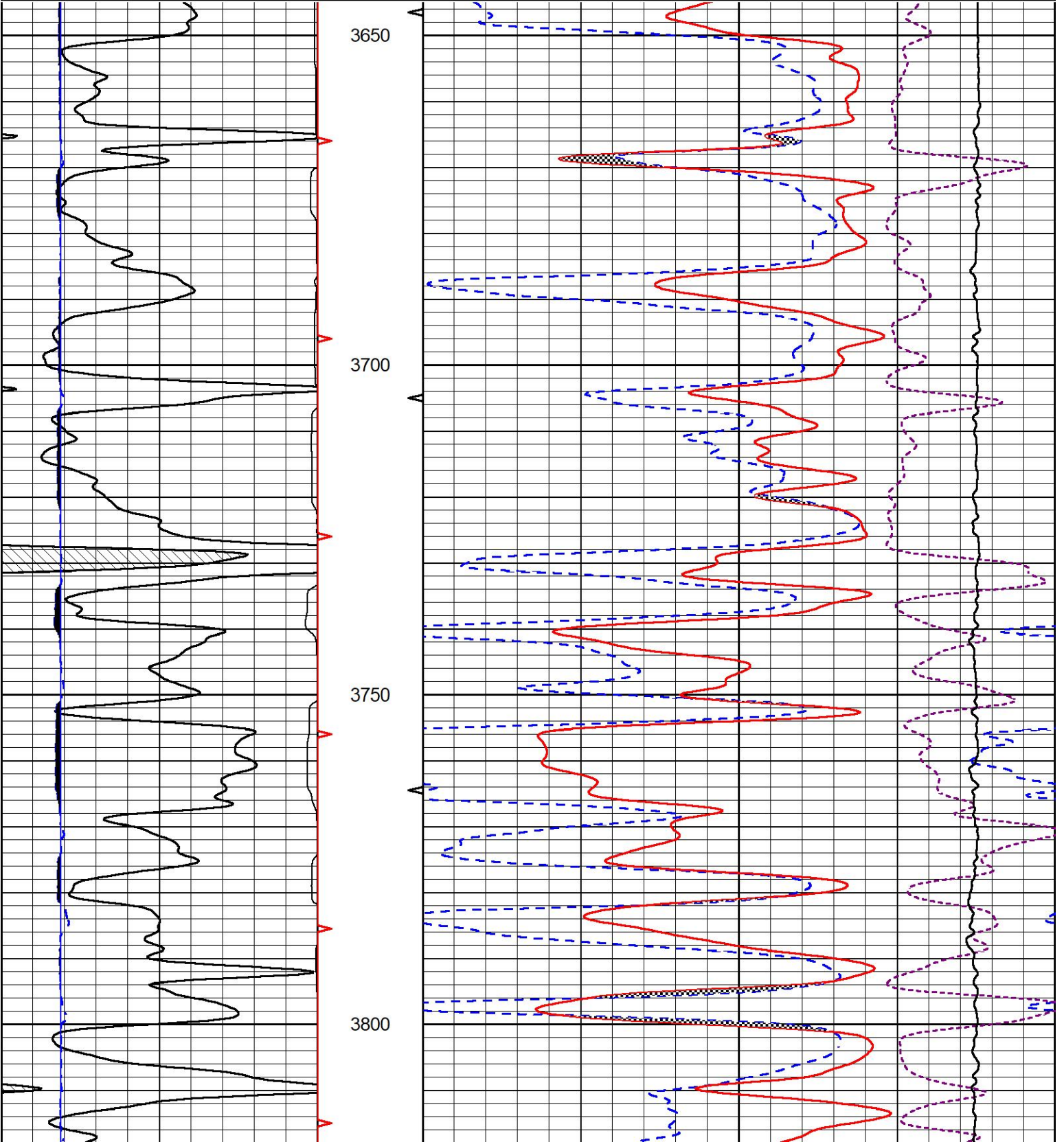
REPEAT SECTION

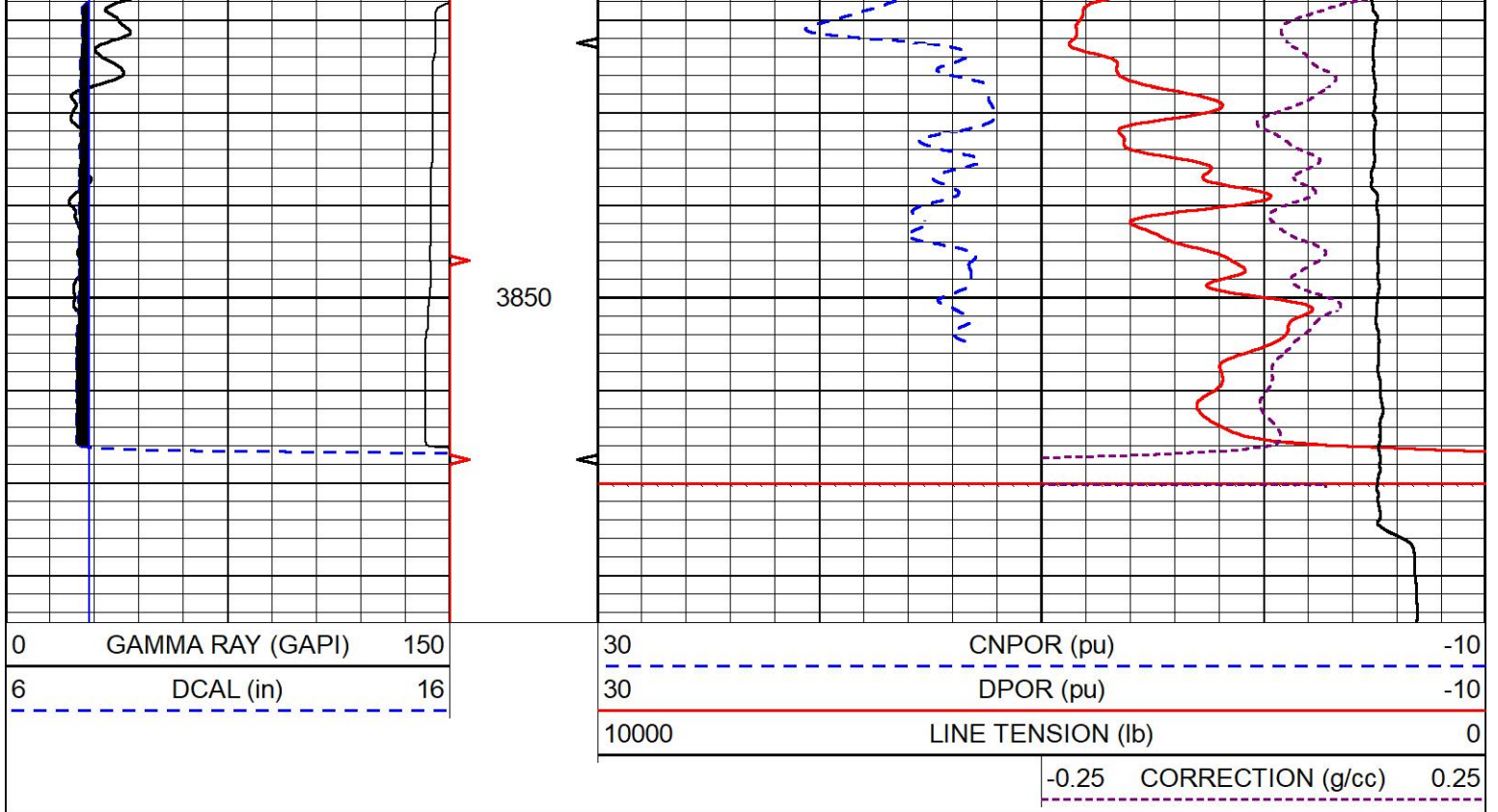


Database File cholla\_wrangler 1-24.db  
 Dataset Pathname stack/pass3.2  
 Presentation Format \_CNDLS~1  
 Dataset Creation Mon Aug 30 07:42:12 2021  
 Charted by Depth in Feet scaled 1:240

0	GAMMA RAY (GAPI)	150
6	DCAL (in)	16

30	CNPOR (pu)	-10
30	DPOR (pu)	-10
10000	LINE TENSION (lb)	0
	-0.25 CORRECTION (g/cc)	0.25





Company Cholla Production, LLC  
 Well Wrangler #1-24  
 Field Nicholson  
 County Trego  
 State Kansas