

**COMPENSATED
DENSITY/NEUTRON
LOG**

Company RAYMOND OIL COMPANY, INC.

Well #4 FRUSHER

Field SANDPIT NORTH

County HODGEMAN State KANSAS

Location: API #: 15-083-21996-0000

1880' FNL & 1563' FWL

Other Services
DILMEL

SEC 9 TWP 21S RGE 23W

Elevation

Permanent Datum GROUND LEVEL Elevation 2348

Log Measured From KELLY BUSHING 5' A.G.L

Drilling Measured From KELLY BUSHING

K.B. 2353
D.F. 2351
G.L. 2348

Date	11/11/21		
Run Number	ONE		
Depth Driller	4650		
Depth Logger	4650		
Bottom Logged Interval	4626		
Top Log Interval	3400		
Casing Driller	8 5/8" @ 259		
Casing Logger	259		
Bit Size	7 7/8		
Type Fluid in Hole	CHEMICAL MUD	CHLORIDES 6300 PPM	
Density / Viscosity	9.3/50		
pH / Fluid Loss	10.5/10.8		
Source of Sample	FLOWLINE		
Rm @ Meas. Temp	.75 @ 60F		
Rmf @ Meas. Temp	.56 @ 60F		
Rmc @ Meas. Temp	.90 @ 60F		
Source of Rmf / Rmc	MEASUREMENT		
Rm @ BHT	.36 @ 122F		
Time Circulation Stopped	2 HOURS		
Time Logger on Bottom	////		
Maximum Recorded Temperature	122F		
Equipment Number	3802		
Location	HAYS, KANSAS		
Recorded By	JASON CAPPELLUCCI		
Witnessed By	KIM SHOEMAKER		

<<< Fold Here >>>

All interpretations are opinions based on inferences from electrical or other measurements and we cannot and do not guarantee the accuracy or correctness of any interpretation, and we shall not, except in the case of gross or willful negligence on our part, be liable or responsible for any loss, costs, damages, or expenses incurred or sustained by anyone resulting from any interpretation made by any of our officers, agents or employees. These interpretations are also subject to our general terms and conditions set out in our current Price Schedule.

Comments

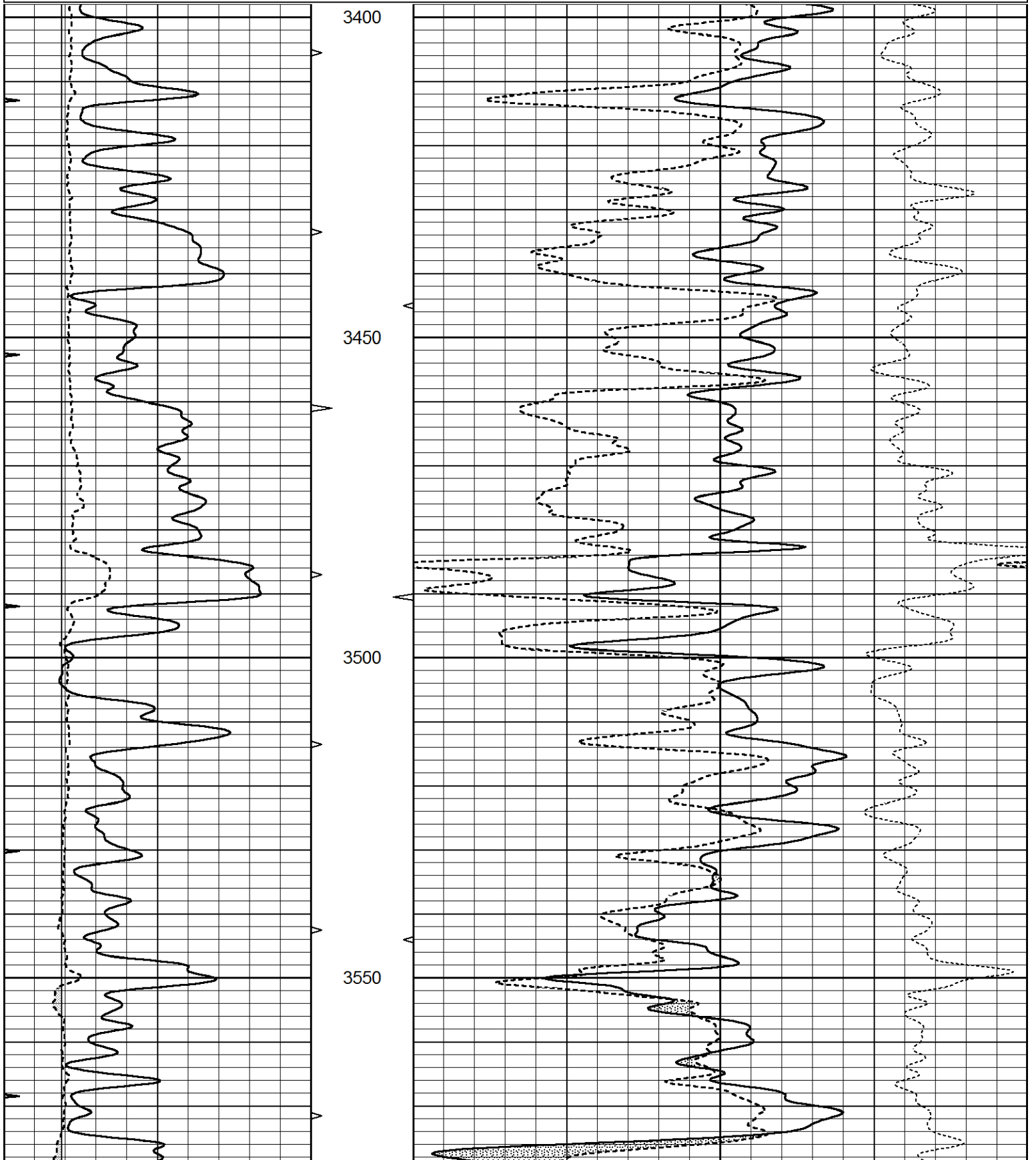
THANK YOU FOR USING ELI WIRELINE SERVICES, HAYS, KS. (785) 628-6395
DIRECTIONS
NESS CITY, KS. - SOUTH JUST PAST THE COUNTY LINE TO RD. X - 2 1/2 EAST
SOUTH INTO

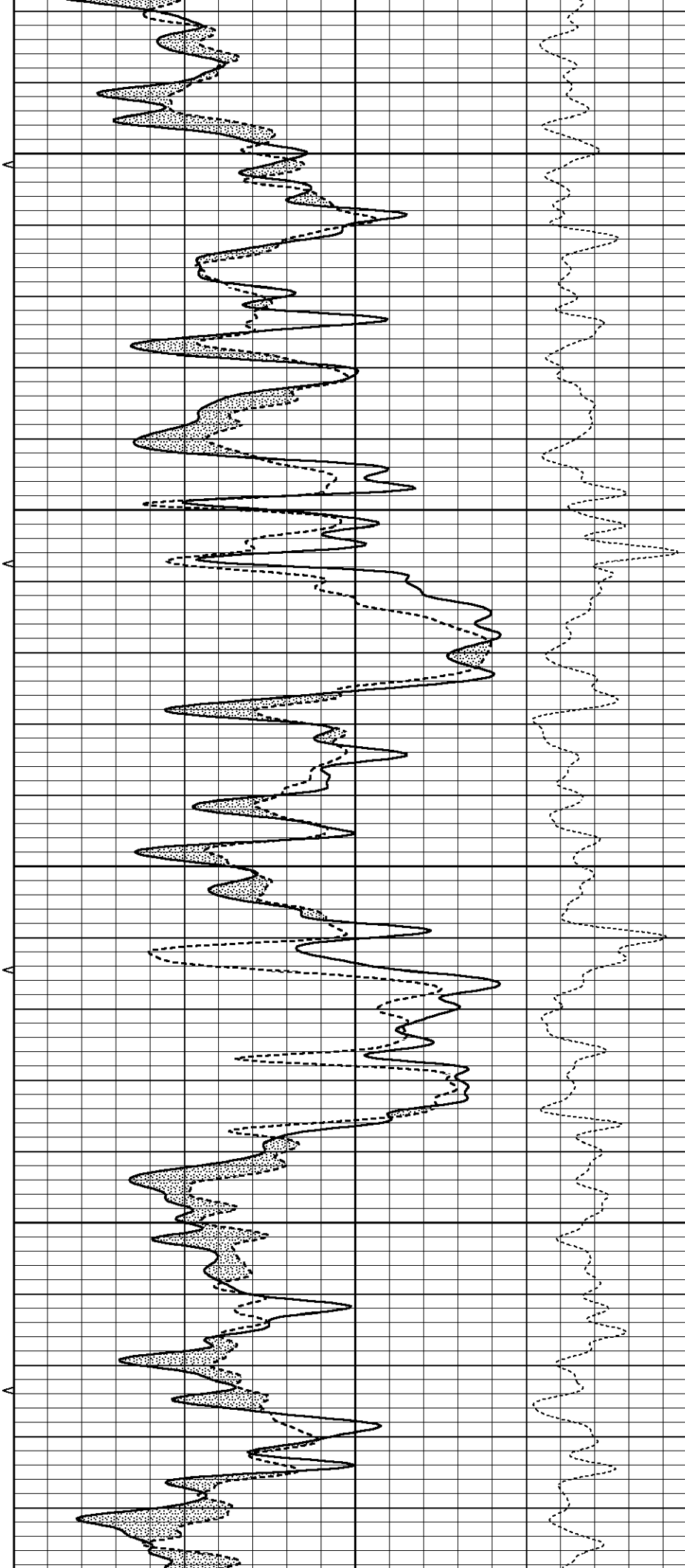
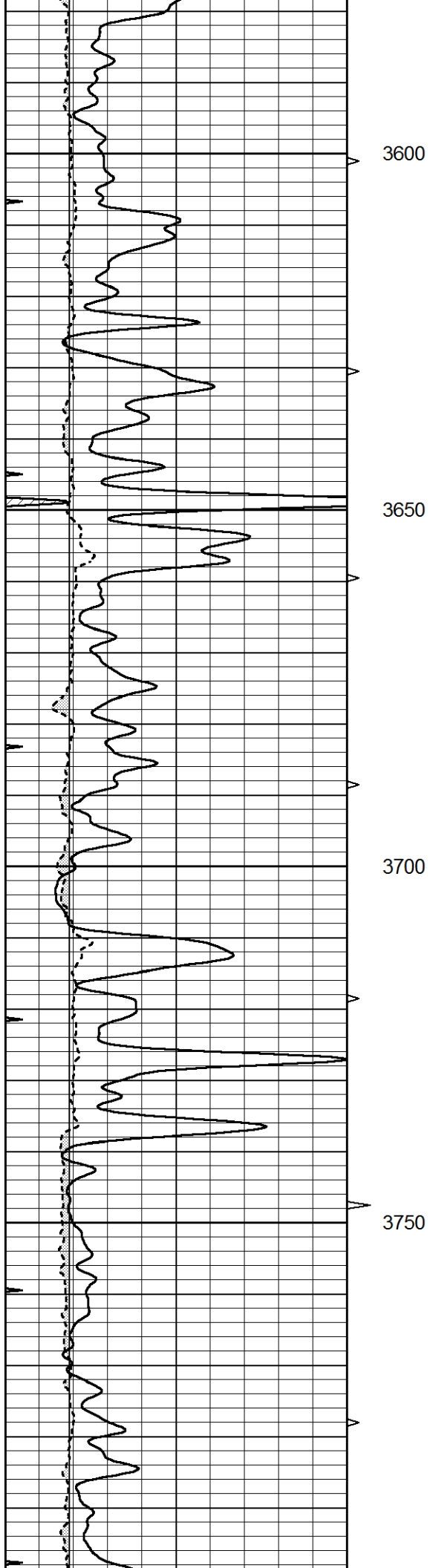


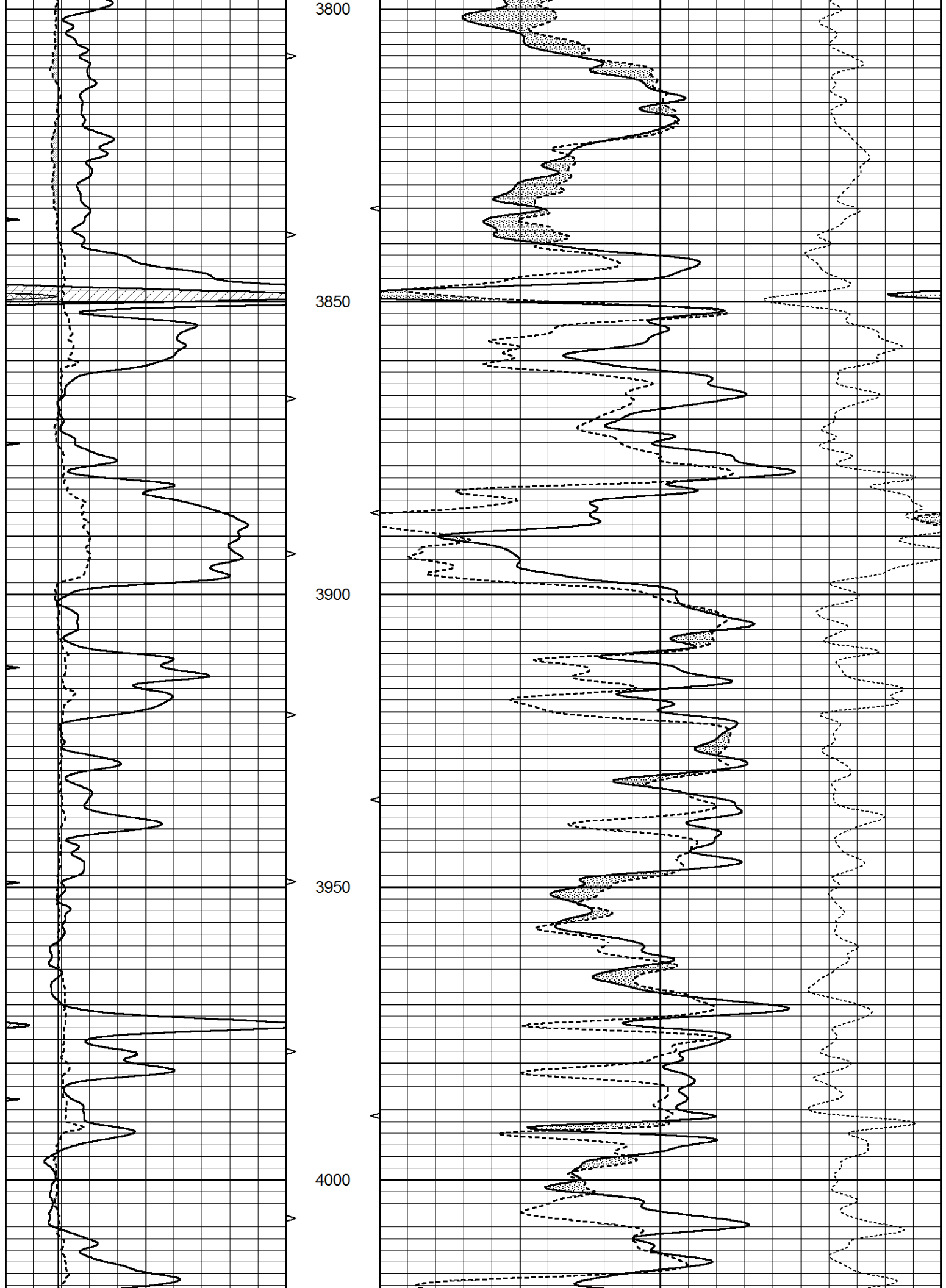
MAIN SECTION

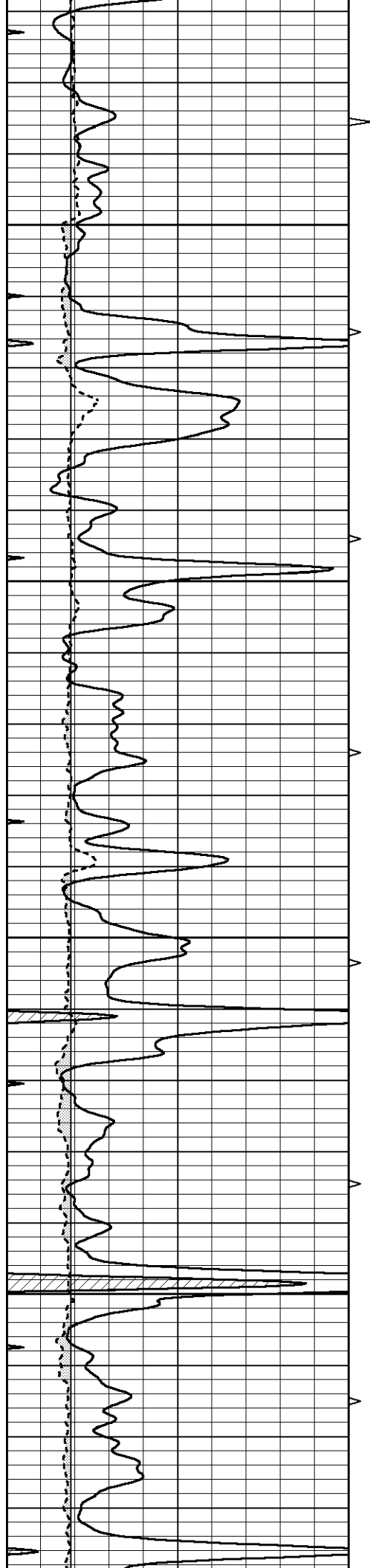
Database File 5875ddn.db
 Dataset Pathname pass3.1
 Presentation Format _den_neu
 Dataset Creation Thu Nov 11 11:43:09 2021
 Charted by Depth in Feet scaled 1:240

0	GAMMA RAY (GAPI)	150	AVTX	30	COMPENSATED DENSITY (pu)	-10
0	MINMK	20	10 (ft3) 0	30	COMPENSATED NEUTRON (pu)	-10
6	CALIPER (in)	16	BVTX		-0.25 CORRECTION (g/cc)	0.25
			0 (ft3) 10			







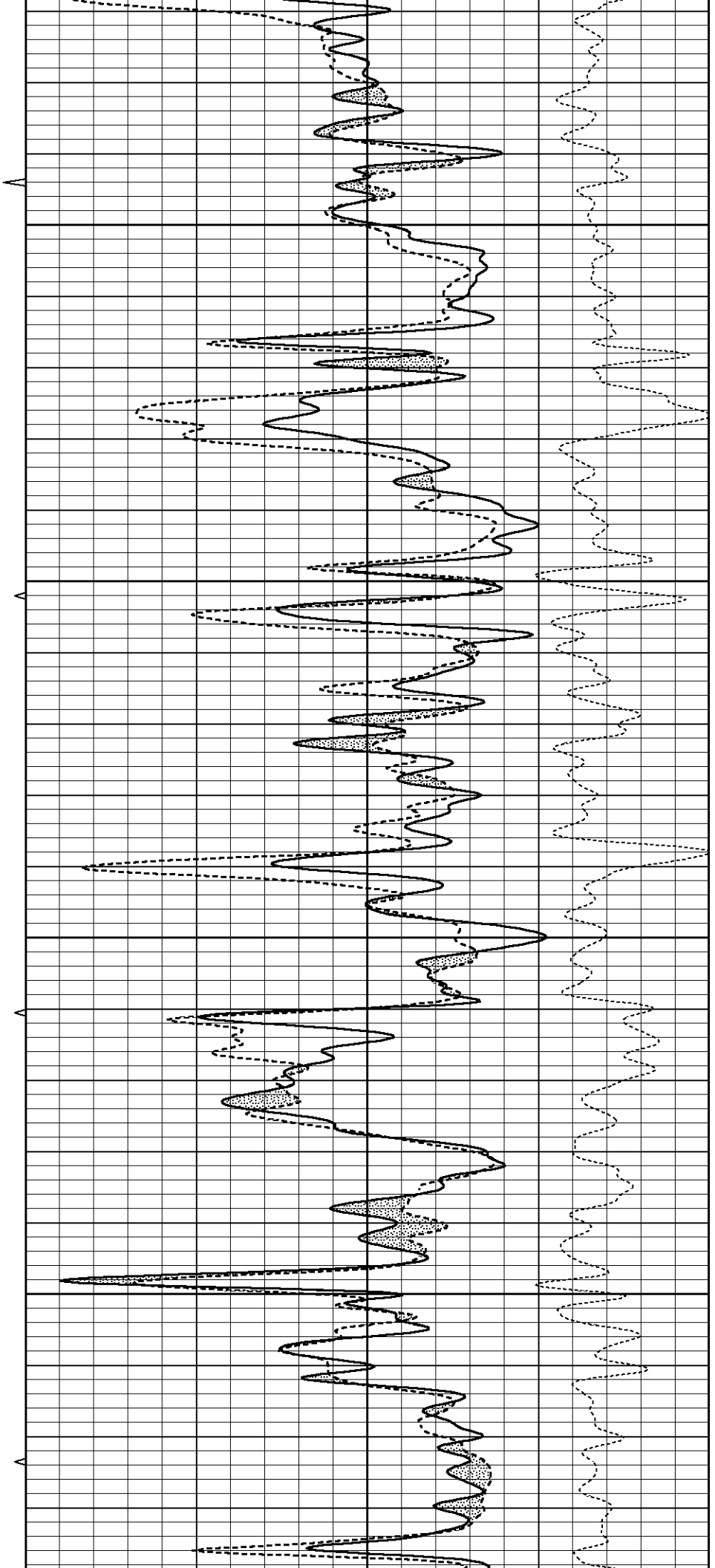


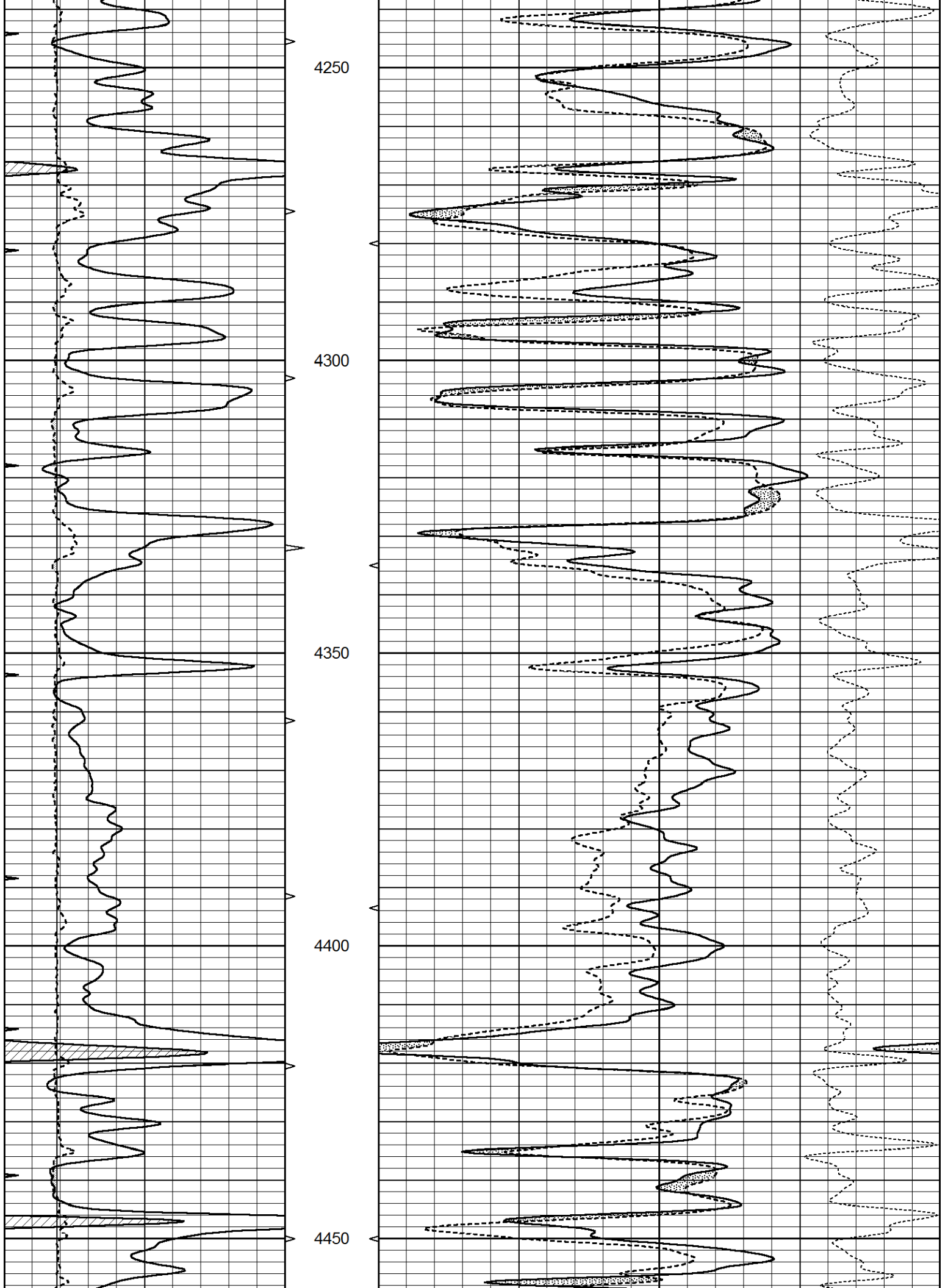
4050

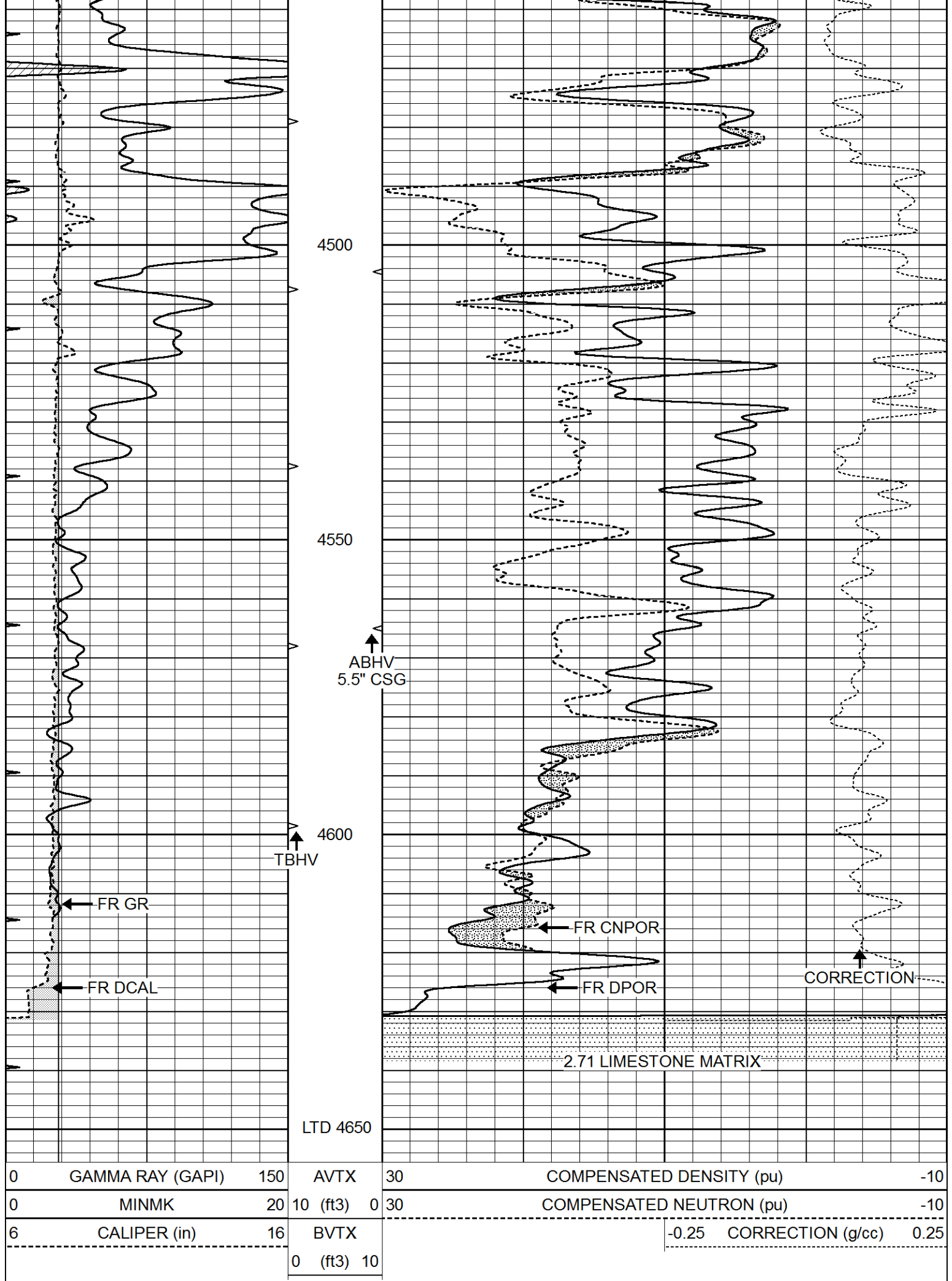
4100

4150

4200







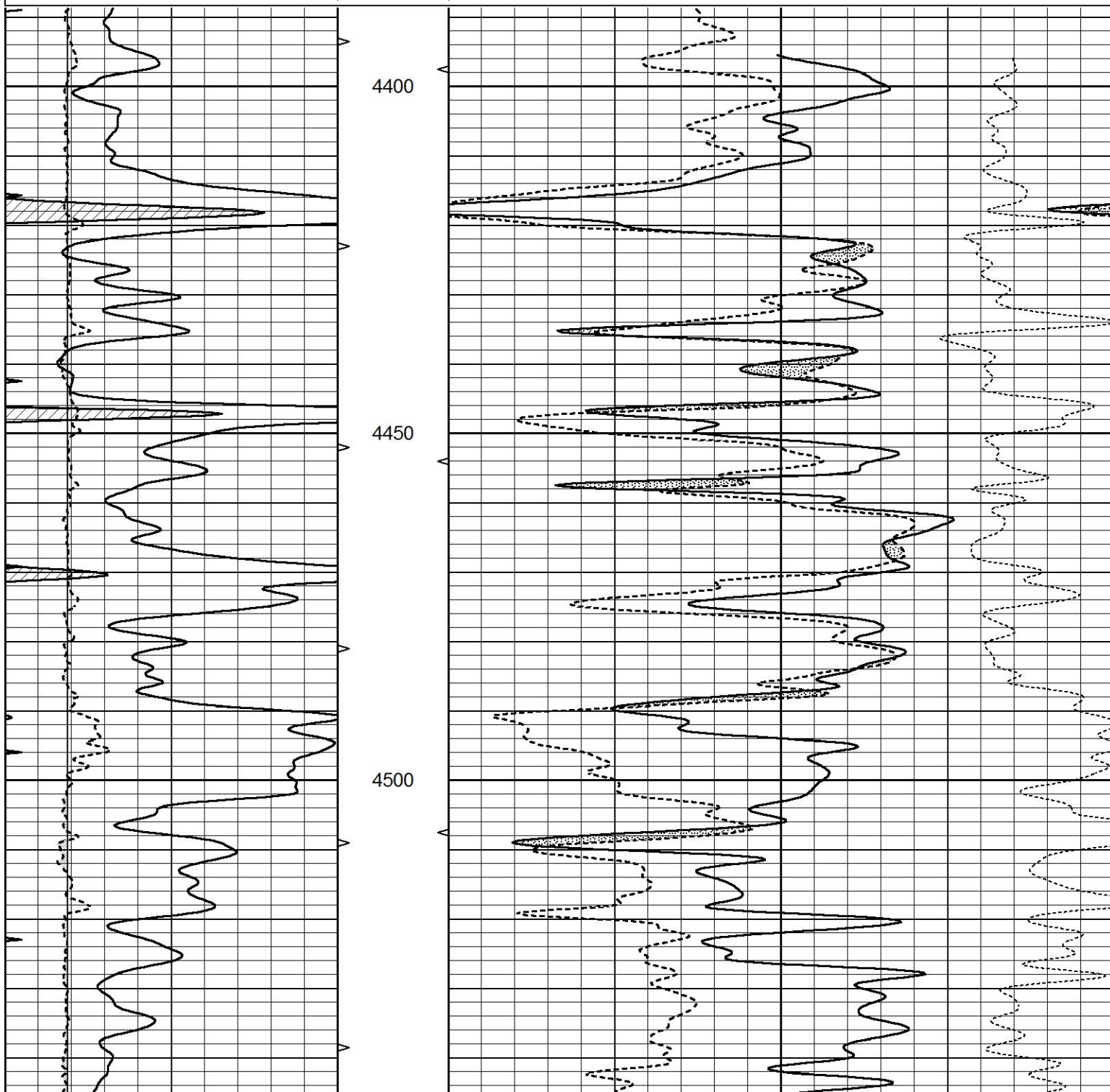
0	GAMMA RAY (GAPI)	150	AVTX	30	COMPENSATED DENSITY (pu)	-10
0	MINMK	20	10 (ft3)	0 30	COMPENSATED NEUTRON (pu)	-10
6	CALIPER (in)	16	BVTX		-0.25 CORRECTION (g/cc)	0.25
			0 (ft3)	10		

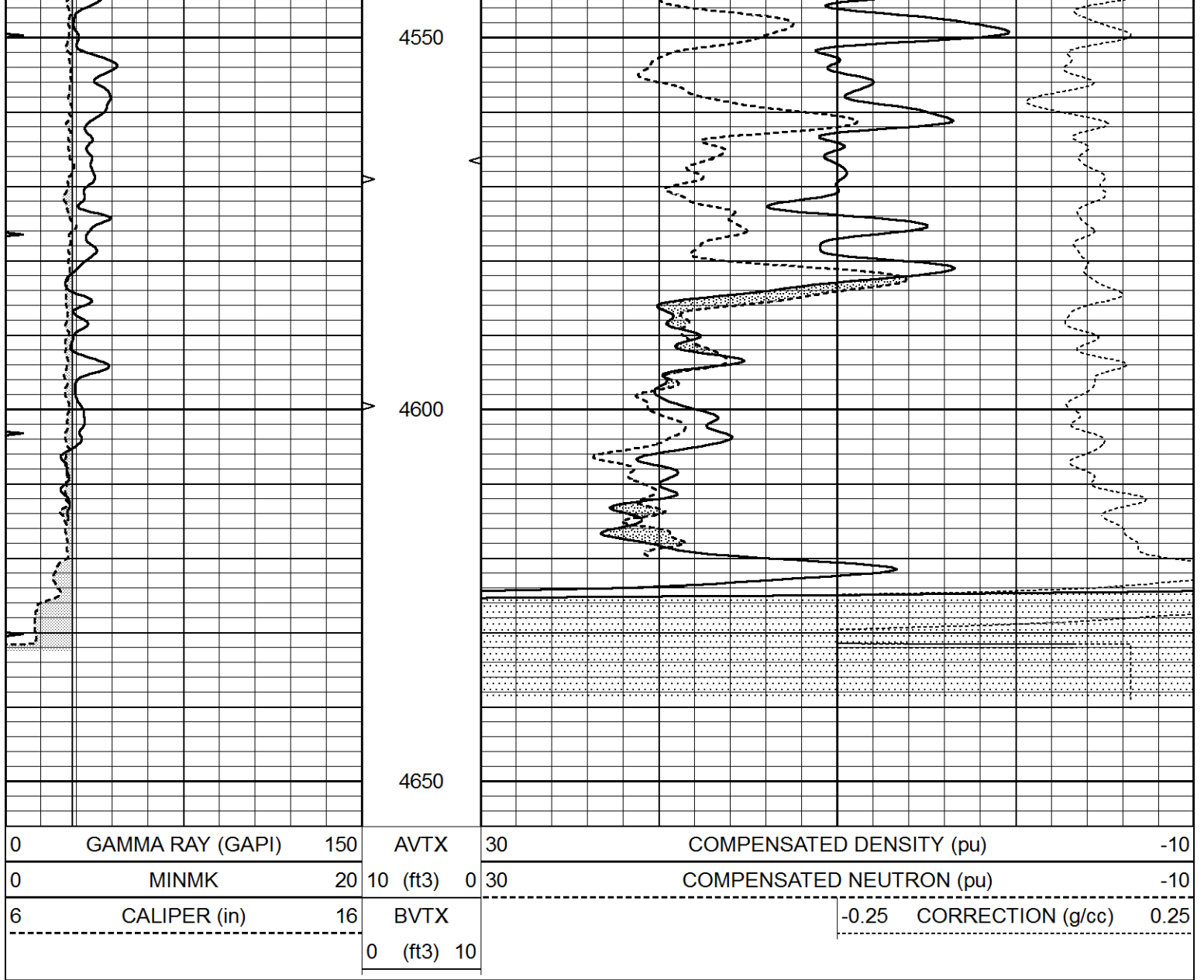


REPEAT SECTION

Database File 5875ddn.db
 Dataset Pathname pass2.1
 Presentation Format _den_neu
 Dataset Creation Thu Nov 11 11:40:08 2021
 Charted by Depth in Feet scaled 1:240

0	GAMMA RAY (GAPI)	150	AVTX	30	COMPENSATED DENSITY (pu)	-10
0	MINMK	20	10 (ft3)	0 30	COMPENSATED NEUTRON (pu)	-10
6	CALIPER (in)	16	BVTX		-0.25 CORRECTION (g/cc)	0.25
			0 (ft3)	10		





Calibration Report

Database File 5875ddn.db
 Dataset Pathname pass2.1
 Dataset Creation Thu Nov 11 11:40:08 2021

Dual Induction Calibration Report

Serial-Model: FW1410-55-Probe
 Surface Cal Performed: Tue Feb 19 11:44:18 2019
 Downhole Cal Performed: Tue Feb 19 11:44:24 2019
 After Survey Verification Performed: Tue Feb 19 11:44:27 2019

Surface Calibration

Loop:	Readings			References			Results	
	Air	Loop	V	Air	Loop	mmho/m	m	b
Deep	0.011	0.656	V	1.000	420.000	mmho/m	649.602	-5.851
Medium	-0.000	0.731	V	1.000	464.000	mmho/m	632.856	1.197
Internal:	Zero	Cal		Zero	Cal		m	b
Deep	0.007	0.649	V	0.000	400.000	mmho/m	623.784	-4.595
Medium	0.004	0.743	V	0.000	464.000	mmho/m	627.284	-2.251

Downhole Calibration

	Readings			References			Results	
	Zero	Cal		Zero	Cal		m'	b'
Deep	-0.824	395.917	mmho/m	-0.976	397.550	mmho/m	1.004	-0.149
Medium	3.565	471.327	mmho/m	3.468	471.590	mmho/m	1.001	-0.099
LL3		7.503	V		1500.000	Ohm-m		
		0.001	V		20.000	Ohm-m		
		-7.481	V		3745.000	mmho-m		

After Survey Verification

	Readings			Targets			Results	
	Zero	Cal		Zero	Cal		m'	b'
Deep	0.000	0.000	mmho/m	-0.824	395.917	mmho/m	1.000	0.000
Medium	0.000	0.000	mmho/m	3.565	471.327	mmho/m	1.000	0.000
LL3		0.000	Ohm-m		1500.000	Ohm-m		
		0.000	Ohm-m		20.000	Ohm-m		
		0.000	mmho-m		3745.000	mmho-m		

Litho Density Calibration Report

Serial: 140704

Model: V4_10P

Source Number: 74GBq-19

Master Calibration

Performed: Mon Dec 07 12:12:14 2020

	Background	Aluminum	Magnesium		
Window 1	557.73	5525.14	24361.20	cps	
Window 2	47.08	1245.09	5901.17	cps	
Window 4	239.06	1250.70	5456.76	cps	
Window 5	564.08	8300.56	16134.07	cps	
Window 6	44.21	1356.78	2705.40	cps	
Window 8	267.87	2686.97	5150.30	cps	
Bulk Density	-	2.6020	1.6830	g/cc	
Pe	-	3.0000	2.5070	b/e	
LS Alpha:	: -1.8719	SS Alpha:	: -0.8000	LS CPE:	: 1.1424
LS Beta:	: 135562.6841	SS Beta:	: 20128.7209	SS CPE:	: 1.5489

Before Survey Background Counts Verification

Performed: Wed Dec 31 18:00:00 1969

Window 1	0.00	cps
Window 2	0.00	cps
Window 4	0.00	cps
Window 5	0.00	cps
Window 6	0.00	cps
Window 8	0.00	cps

After Survey Background Counts Verification

Performed: Wed Dec 31 18:00:00 1969

Window 1	0.00	cps
Window 2	0.00	cps
Window 4	0.00	cps
Window 5	0.00	cps
Window 6	0.00	cps
Window 8	0.00	cps

Lithodensity Caliper Calibration

Performed: Mon Dec 07 12:12:14 2020

Results	Readings		References (in)		Gain	Offset
	Low	High	Low	High		
	5852.8	8972.7	8.0	14.0	0.0	-3.3

Before Survey Caliper Verification			Performed:			
	Reference	Reading				
Caliper (in)	_____	_____				

After Survey Caliper Verification			Performed:			
	Reference	Reading				
Caliper (in)	_____	_____				

Compensated Neutron Calibration Report

Serial Number:	080621PMC
Tool Model:	NABORS

PRE-SURVEY VERIFICATION				
Detector	Readings	Measured	Target	
Short Space	cps			
Long Space	cps	pu		pu

POST-SURVEY VERIFICATION				
Detector	Readings	Measured	Target	
Short Space	cps			
Long Space	cps	pu		pu

Gamma Ray Calibration Report

Serial Number:	7	
Tool Model:	Probe1	
Performed:	Tue Jan 19 17:50:08 2021	
Calibrator Value:	1.0	GAPI
Background Reading:	0.0	cps
Calibrator Reading:	1.0	cps
Sensitivity:	0.5300	GAPI/cps