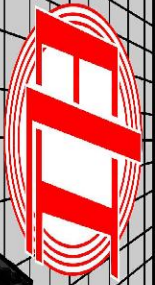


MICRO LOG



Company RAYMOND OIL COMPANY, INC.

Well #4 FRUSHER

Field SANDPIT NORTH

County HODGEMAN State KANSAS

Location: API #: 15-083-21996-0000

1880' FNL & 1563' FWL

SEC 9 TWP 21S RGE 23W

Other Services  
CDL/CNL  
DIL

Permanent Datum GROUND LEVEL Elevation 2348

Log Measured From KELLY BUSHING 5' A.G.L

Elevation  
K.B. 2353  
D.F. 2351  
G.L. 2348

Date 11/11/21

Run Number TWO

Depth Driller 4650

Depth Logger 4650

Bottom Logged Interval 4648

Top Log Interval 3400

Casing Driller 8 5/8" @ 259

Casing Logger 259

Bit Size 7 7/8

Type Fluid in Hole CHEMICAL MUD

Density / Viscosity 9.3/50

pH / Fluid Loss 10.5/10.8

Source of Sample FLOWLINE

Rm @ Meas. Temp .75 @ 60F

Rmf @ Meas. Temp .56 @ 60F

Rmc @ Meas. Temp .90 @ 60F

Source of Rmf / Rmc MEASUREMENT

Rm @ BHT .36 @ 122F

Time Circulation Stopped 2 HOURS

Time Logger on Bottom //

Maximum Recorded Temperature 122F

Equipment Number 3802

Location HAYS, KANSAS

Recorded By JASON CAPPELLUCCI

Witnessed By KIM SHOEMAKER

<<< Fold Here >>>

All interpretations are opinions based on inferences from electrical or other measurements and we cannot and do not guarantee the accuracy or correctness of any interpretation, and we shall not, except in the case of gross or willful negligence on our part, be liable or responsible for any loss, costs, damages, or expenses incurred or sustained by anyone resulting from any interpretation made by any of our officers, agents or employees. These interpretations are also subject to our general terms and conditions set out in our current Price Schedule.

Comments

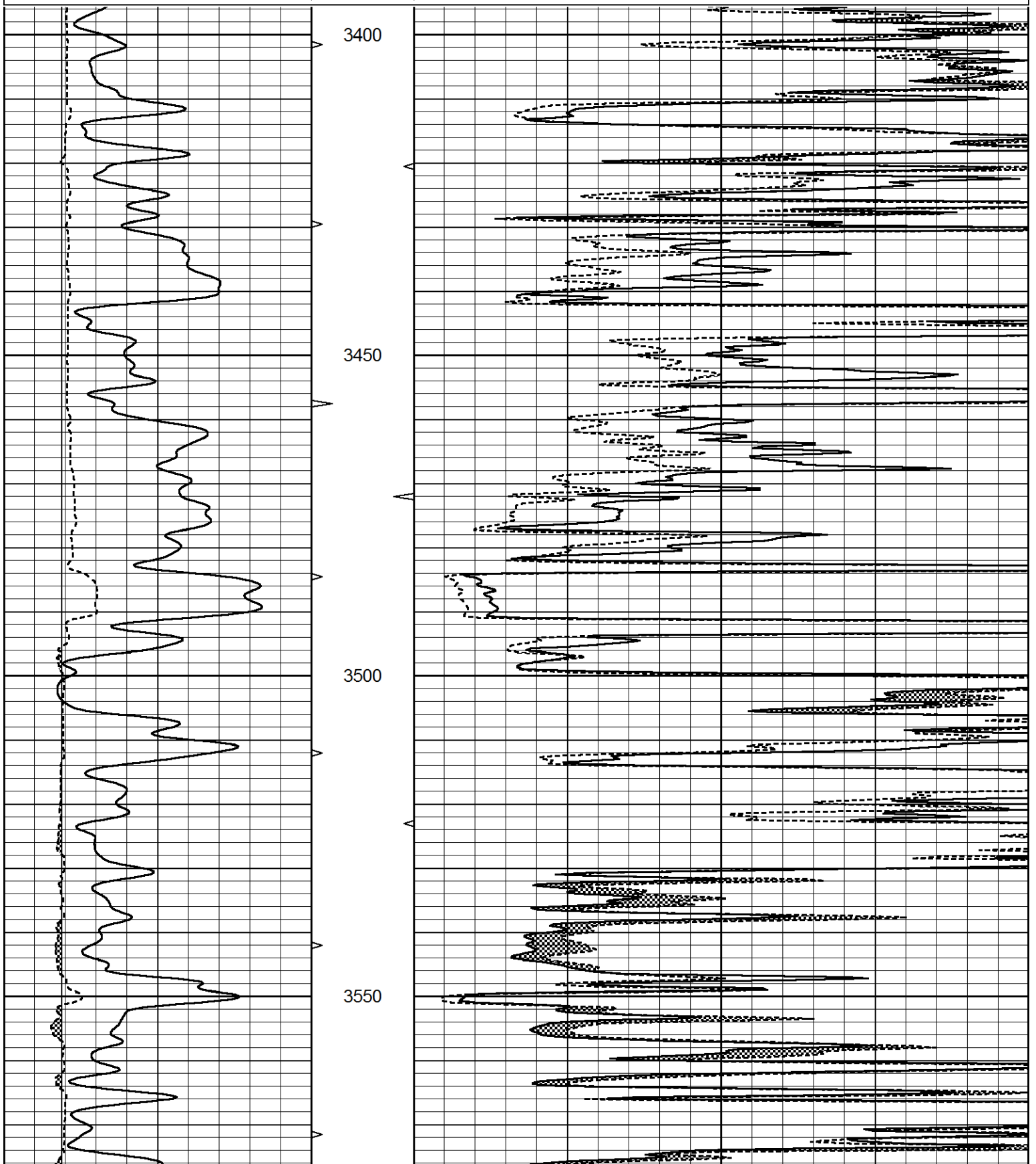
THANK YOU FOR USING ELI WIRELINE SERVICES, HAYS, KS. ( 785 ) 628-6395  
DIRECTIONS  
NESS CITY, KS. - SOUTH JUST PAST THE COUNTY LINE TO RD. X - 2 1/2 EAST  
SOUTH INTO

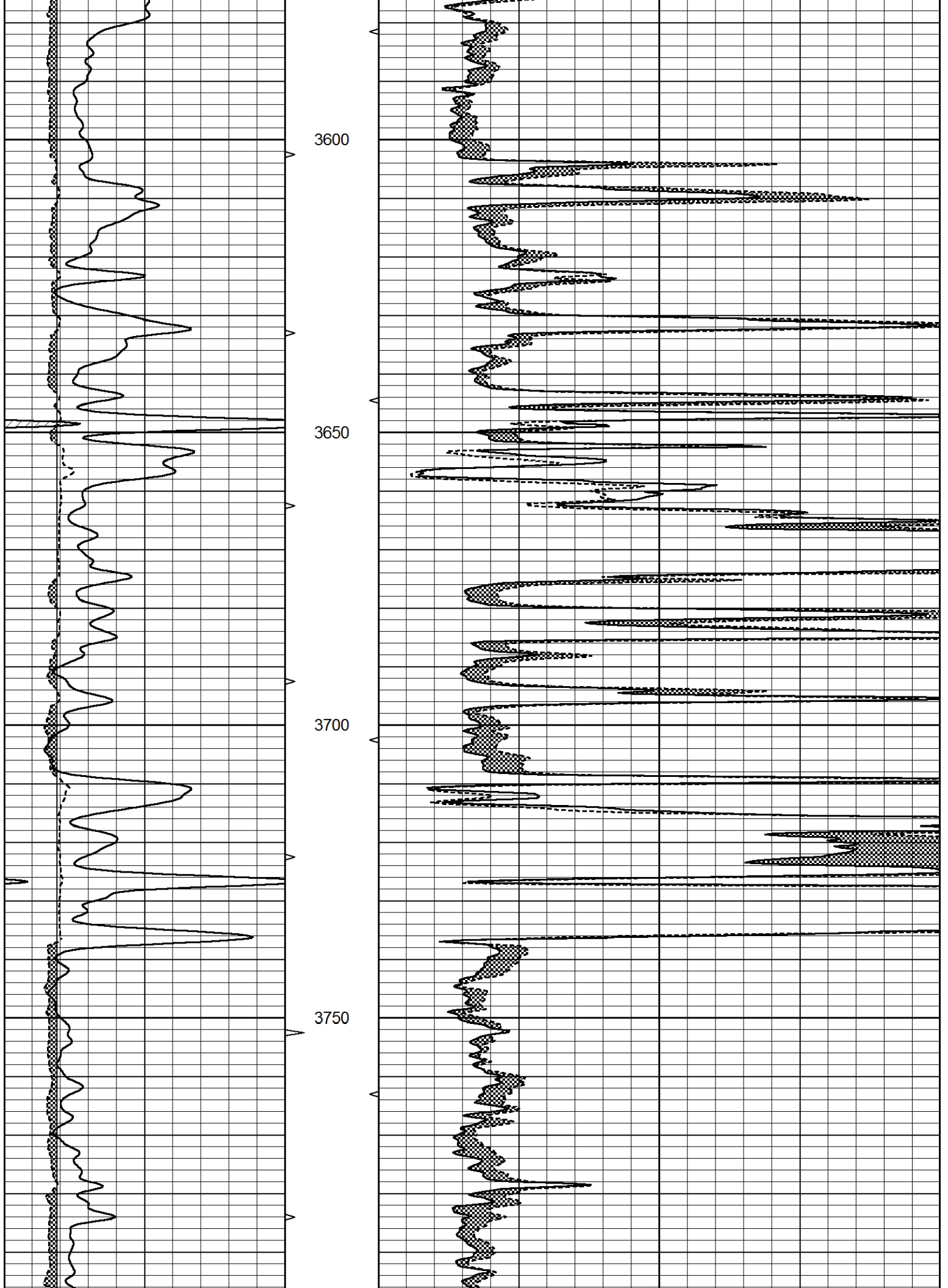


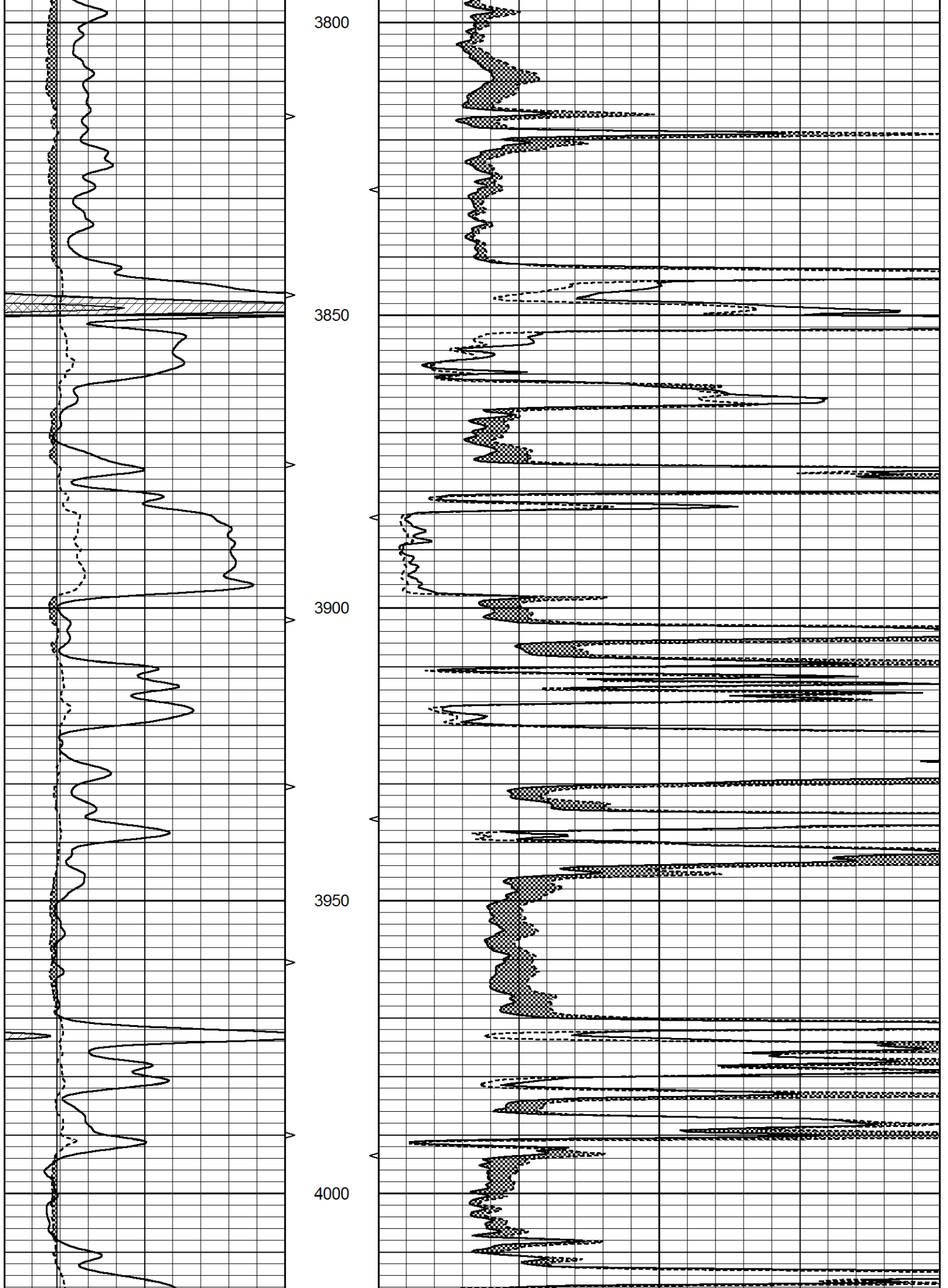
MAIN SECTION

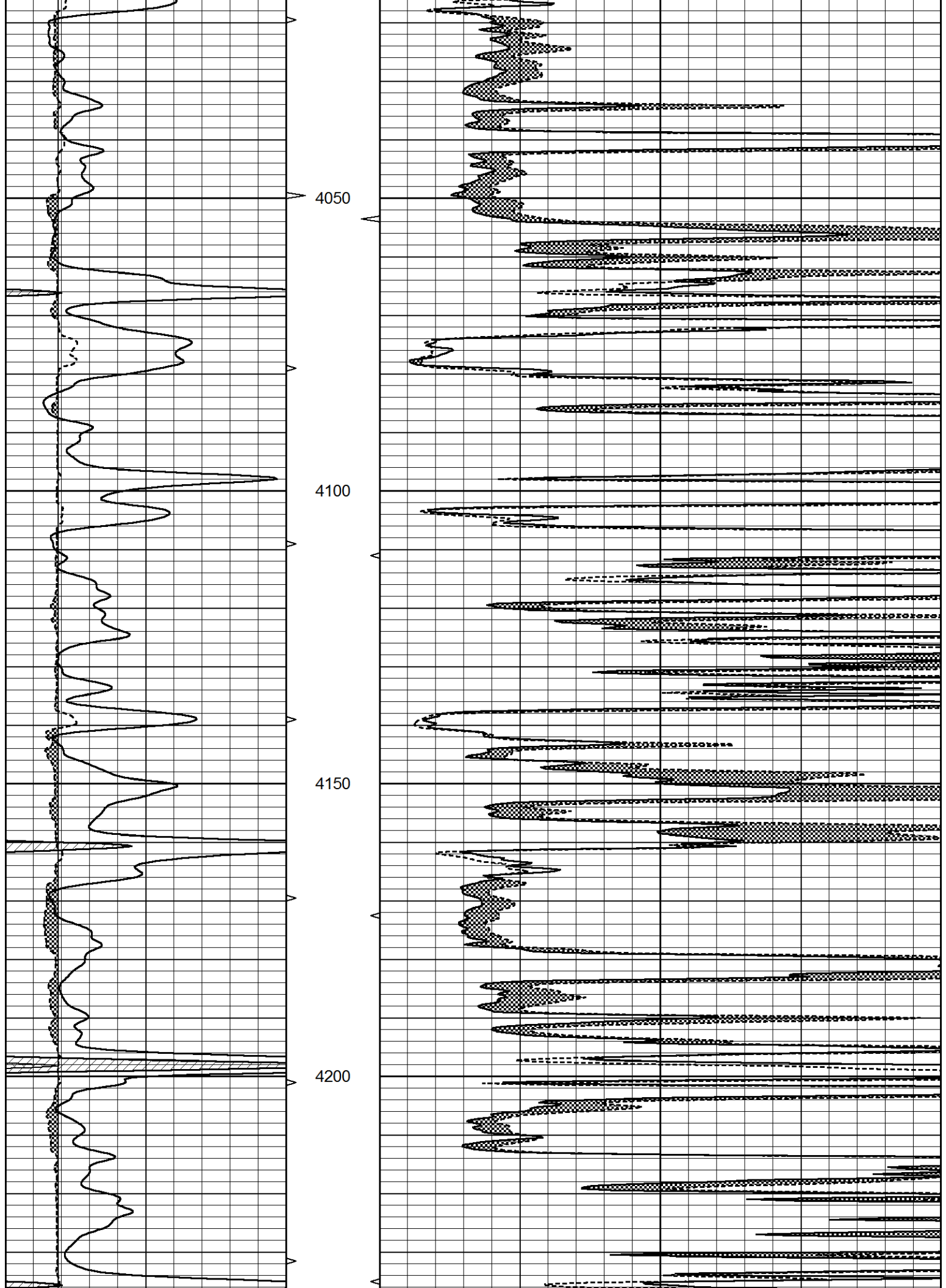
Database File 5875ddn.db  
 Dataset Pathname pass6.1  
 Presentation Format \_micro  
 Dataset Creation Thu Nov 11 13:55:43 2021  
 Charted by Depth in Feet scaled 1:240

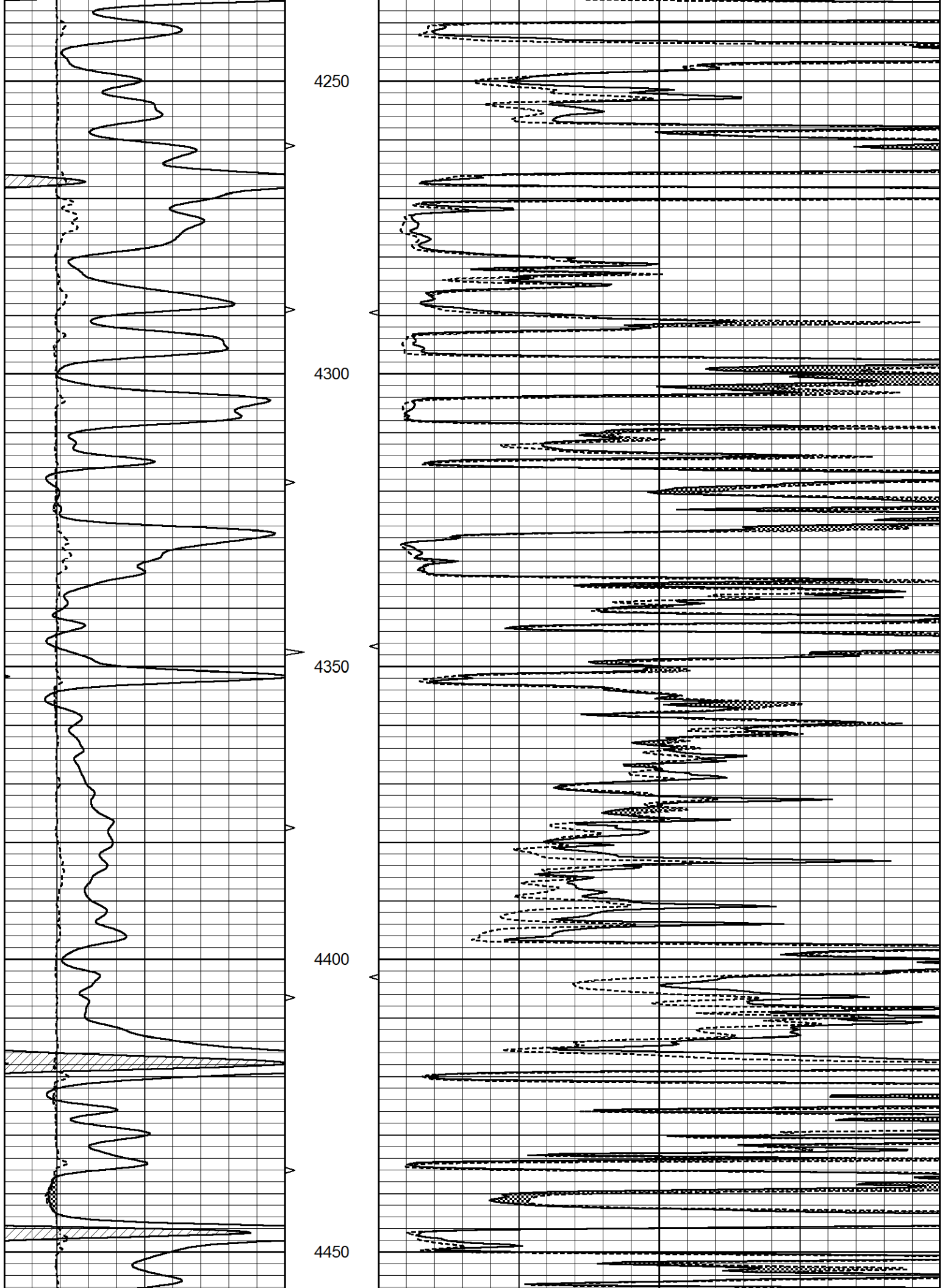
0	GAMMA RAY (GAPI)	150	ABHV	0	MEL1.5 (Ohm-m)	40
6	CALIPER (in)	16	10 (ft3)	0	MEL2.0 (Ohm-m)	40
			TBHV			
			0 (ft3)	10		



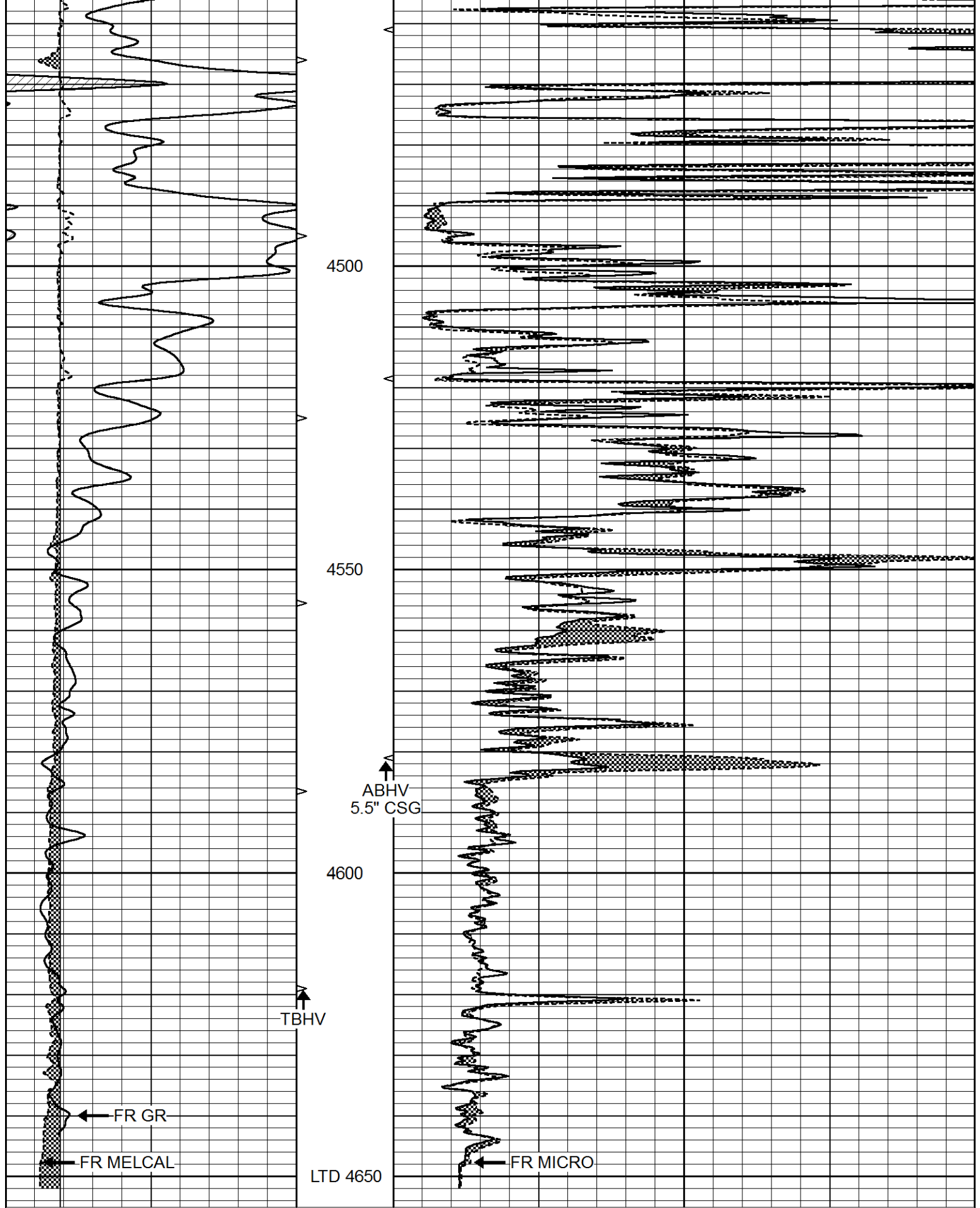












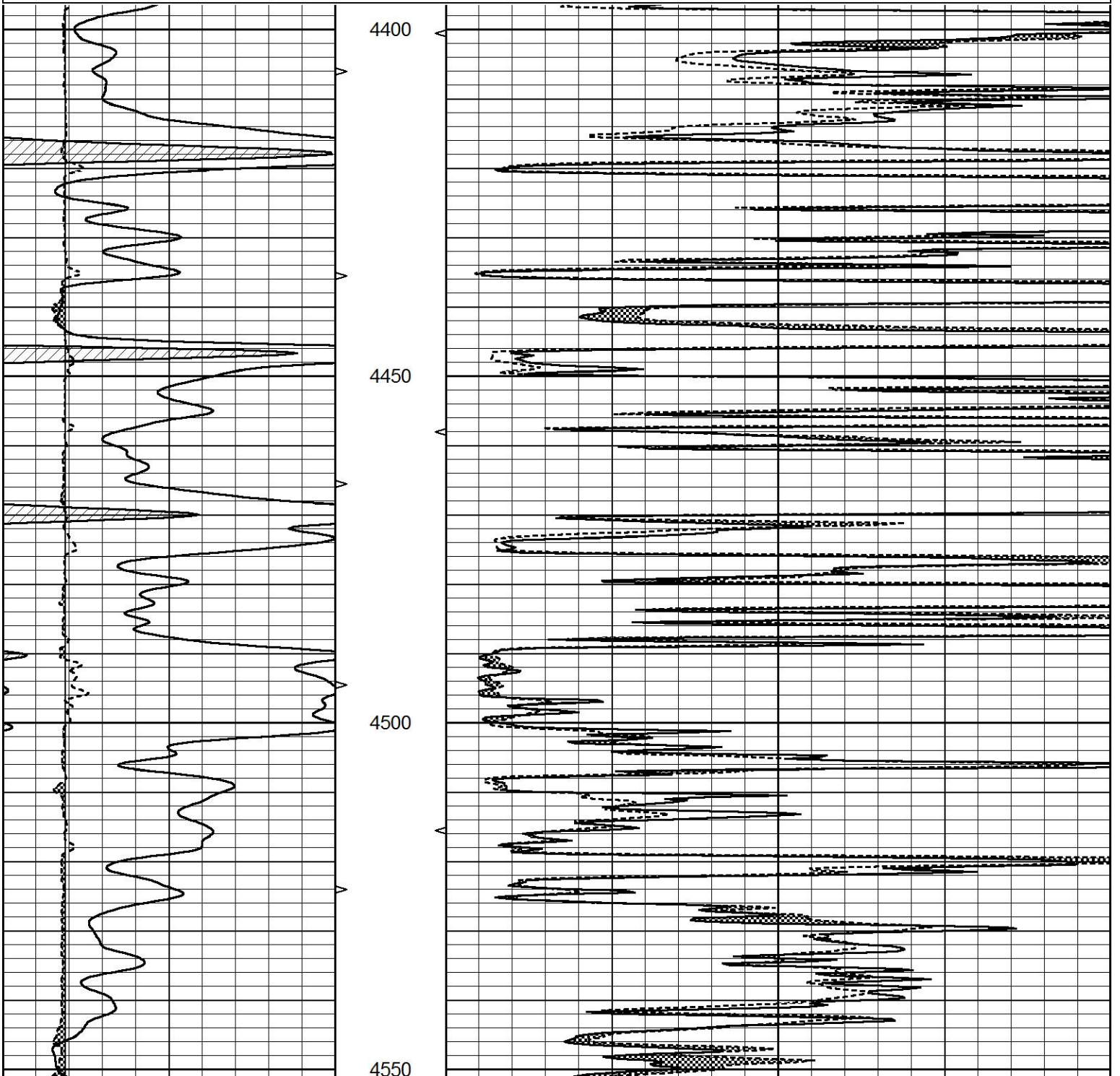
0	GAMMA RAY (GAPI)	150	ABHV	0	MEL1.5 (Ohm-m)	40
6	CALIPER (in)	16	10 (ft3)	0 0	MEL2.0 (Ohm-m)	40
			TBHV			
			0 (ft3)	10		



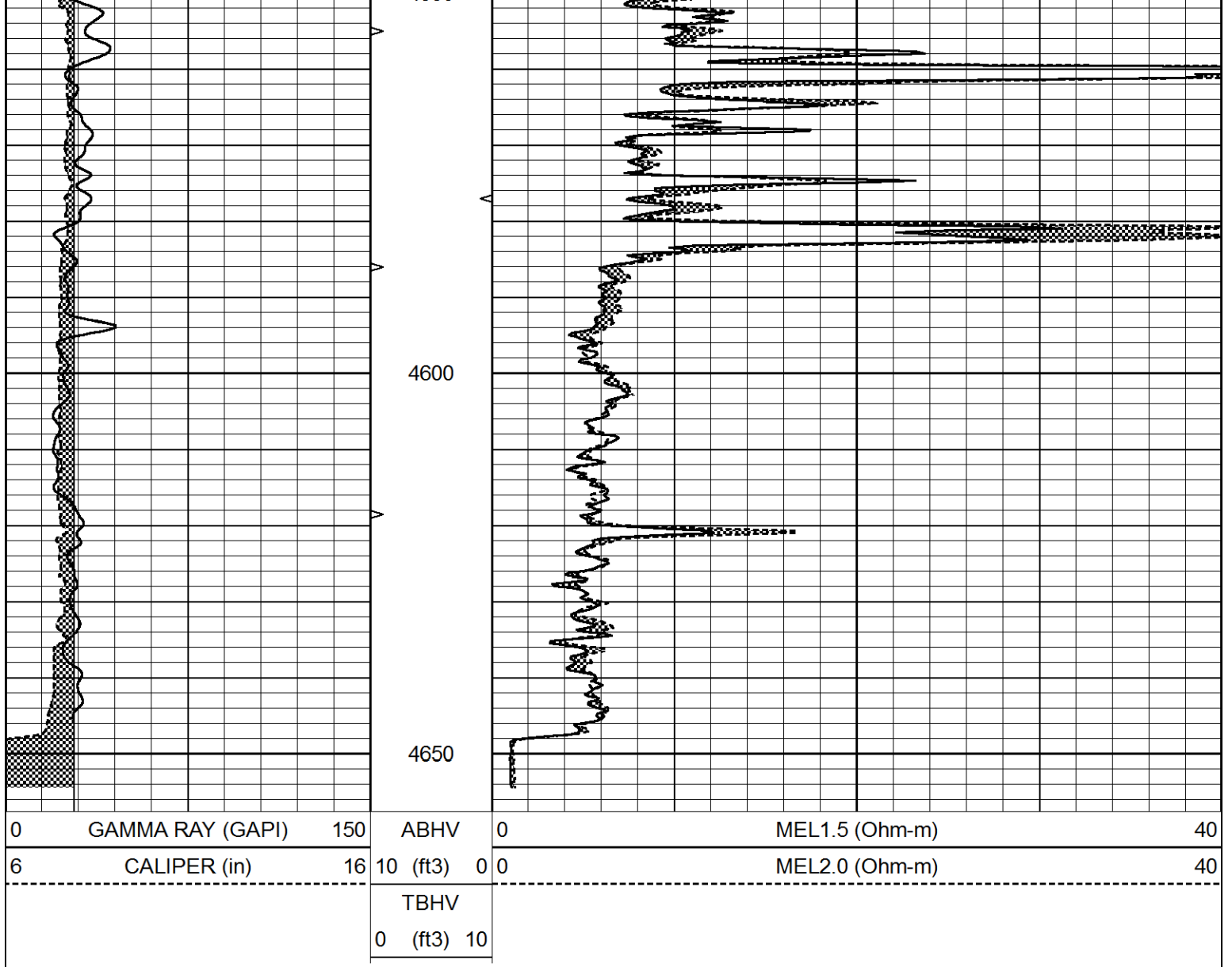
# REPEAT SECTION

Database File 5875ddn.db  
 Dataset Pathname pass5.1  
 Presentation Format \_micro  
 Dataset Creation Thu Nov 11 13:44:43 2021  
 Charted by Depth in Feet scaled 1:240

0	GAMMA RAY (GAPI)	150	ABHV	0	MEL1.5 (Ohm-m)	40
6	CALIPER (in)	16	10 (ft3)	0 0	MEL2.0 (Ohm-m)	40
			TBHV			
			0 (ft3)	10		







### Calibration Report

Database File 5875ddn.db  
 Dataset Pathname pass5.1  
 Dataset Creation Thu Nov 11 13:44:43 2021

#### MICRO\_USR Calibration Report

Serial Number:	070911	
Tool Model:	ProbeL	
Performed:	Sun Dec 13 14:24:22 2020	
Caliper Calibration:	Gain=3.755	Offset=2.050
References	Low Cal	High Cal
Readings	8.000	14.000
	1.451	3.049
1.5" Calibration:	Gain=55.000	Offset=-0.700
References	Low Cal	High Cal
Readings	0.000	20.000
	0.004	0.843
2" Calibration:	Gain=50.000	Offset=-0.650
References	Low Cal	High Cal
	0.000	20.000

References  
Readings

0.000  
0.021

20.000  
0.810

Microlog Calibration Report

Serial-Model:  
Performed:

070911-ProbeL  
Sat Apr 11 01:13:01 2015

	Readings			References			Results	
	Zero	Cal		Zero	Cal		m	b
Normal	0.0002	0.4836	V	0.0000	10.0000	Ohm-m	20.6908	-0.0051
Inverse	0.0018	0.6297	V	0.0000	10.0000	Ohm-m	15.9263	-0.0282
Caliper	0.0000	1.0000	V	0.0000	1.0000	in	1.0000	0.0000

Gamma Ray Calibration Report

Serial Number: 070558  
Tool Model: Probe1  
Performed: Fri Oct 30 21:32:56 2020

Calibrator Value: 1.0 GAPI

Background Reading: 0.0 cps  
Calibrator Reading: 1.0 cps

Sensitivity: 0.2700 GAPI/cps