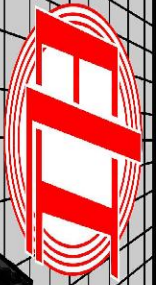


MICRO
LOG



Company MCGINNESS ENERGY COMPANY, INC.
Well WOYDZIAK #1-26
Field
County ELLSWORTH State KANSAS

Location: 1460' FSL & 1725' FEL
SW SE NW SE
SEC 26 TWP 17S RGE 10W
Permanent Datum GROUND LEVEL Elevation 1791
Log Measured From KELLY BUSHING 8' A.G.L
Drilling Measured From KELLY BUSHING
Other Services CDL/CNL DIL
Elevation K.B. 1799 D.F. 1797 G.L. 1791

Date	11/14/21
Run Number	TWO
Depth Driller	3280
Depth Logger	3279
Bottom Logged Interval	3277
Top Log Interval	2200
Casing Driller	8 5/8" @ 284
Casing Logger	284
Bit Size	7 7/8
Type Fluid in Hole	CHEMICAL MUD
Density / Viscosity	9.4/47
pH / Fluid Loss	9.0/9.6
Source of Sample	FLOWLINE
Rm @ Meas. Temp	.80 @ 60F
Rmf @ Meas. Temp	.60 @ 60F
Rmc @ Meas. Temp	.96 @ 60F
Source of Rmf / Rmc	MEASUREMENT
Rm @ BHT	.43 @ 110F
Time Circulation Stopped	2 HOURS
Time Logger on Bottom	////
Maximum Recorded Temperature	110F
Equipment Number	3802
Location	HAYS, KANSAS
Recorded By	JASON CAPPELLUCCI
Witnessed By	LEAH KASTEN

<<< Fold Here >>>

All interpretations are opinions based on inferences from electrical or other measurements and we cannot and do not guarantee the accuracy or correctness of any interpretation, and we shall not, except in the case of gross or willful negligence on our part, be liable or responsible for any loss, costs, damages, or expenses incurred or sustained by anyone resulting from any interpretation made by any of our officers, agents or employees. These interpretations are also subject to our general terms and conditions set out in our current Price Schedule.

Comments

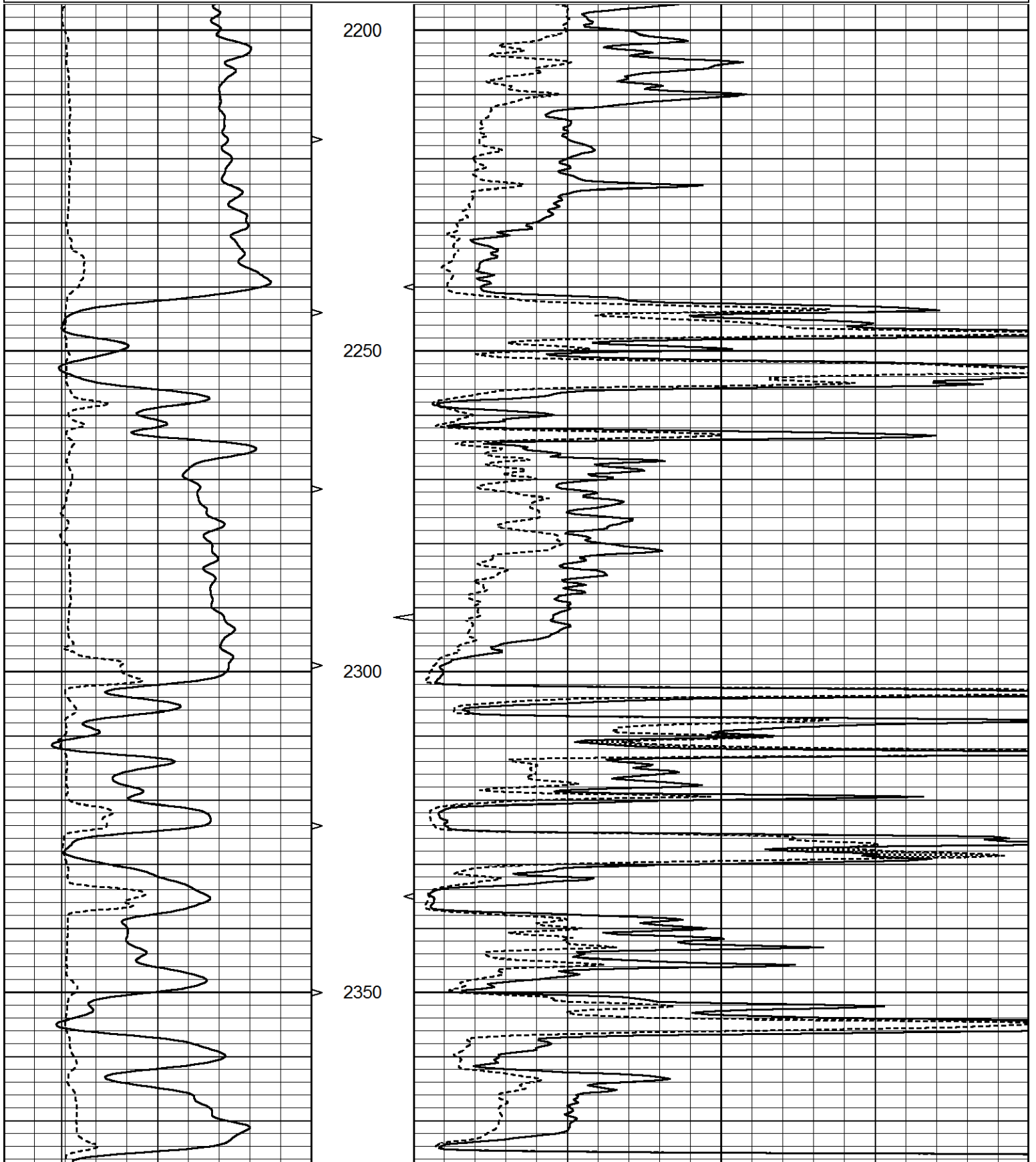
THANK YOU FOR USING ELI WIRELINE SERVICES, HAYS, KS. (785) 628-6395
DIRECTIONS
CLAFLIN, KS. - EAST TO BARTON, ELLSWORTH COUNTY LINE - 3 EAST - 1 NORTH - 1/2 WEST
NORTH INTO

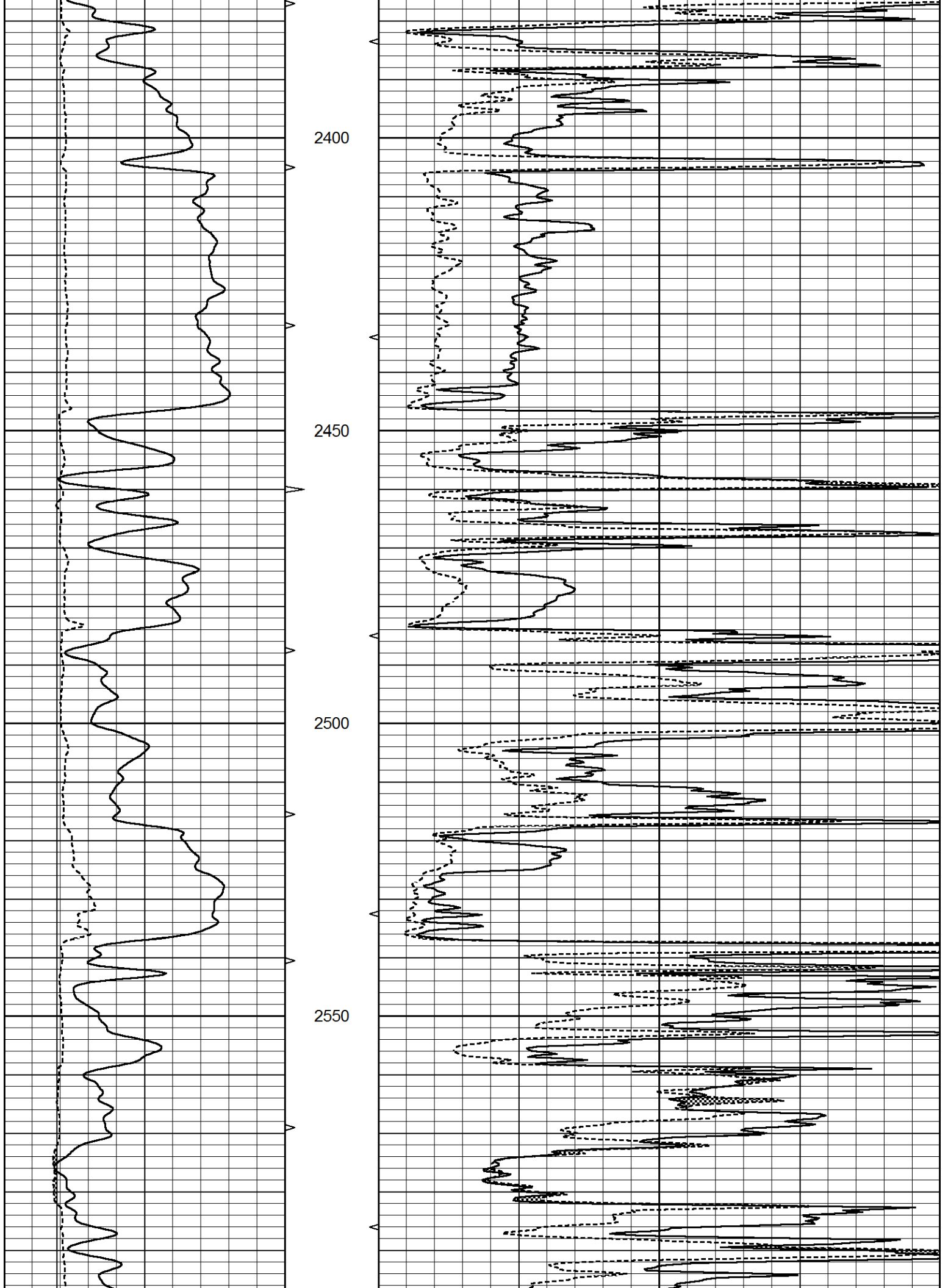


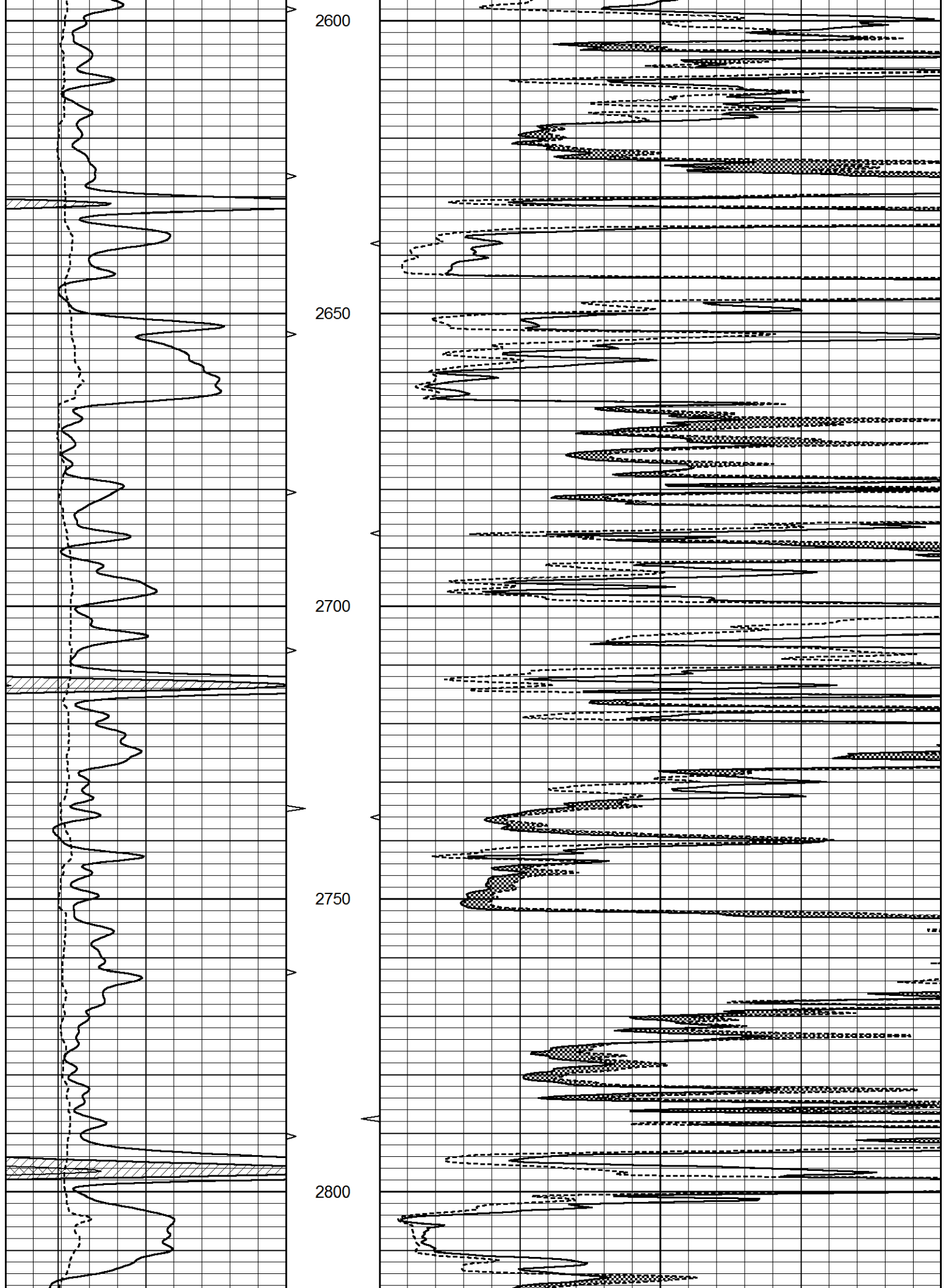
MAIN SECTION

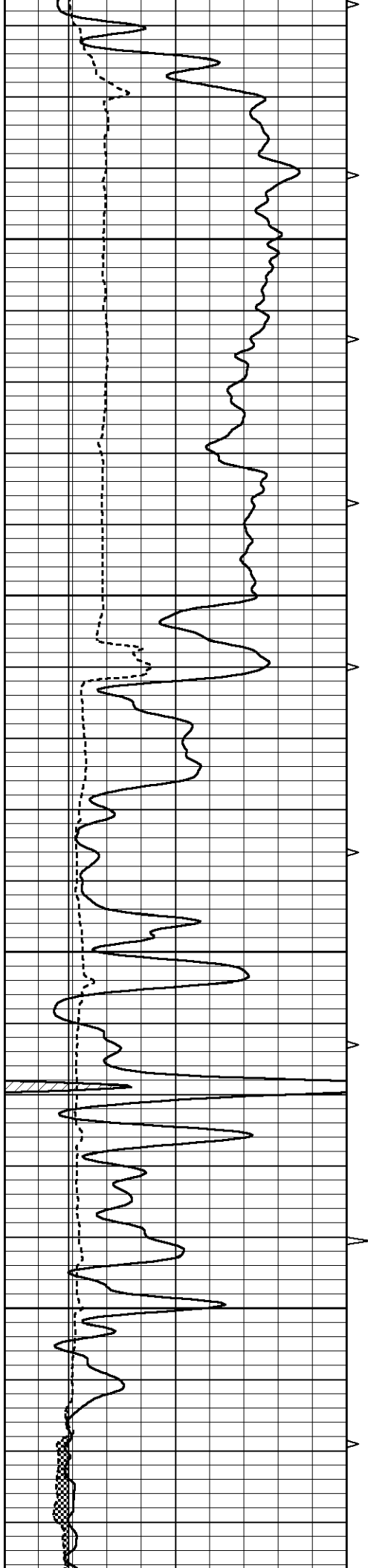
Database File 6052ddn.db
 Dataset Pathname pass6.1
 Presentation Format _micro
 Dataset Creation Mon Nov 15 00:38:50 2021
 Charted by Depth in Feet scaled 1:240

0	GAMMA RAY (GAPI)	150	ABHV	0	MEL1.5 (Ohm-m)	40
6	CALIPER (in)	16	10 (ft3)	0	MEL2.0 (Ohm-m)	40
			TBHV			
			0 (ft3)	10		







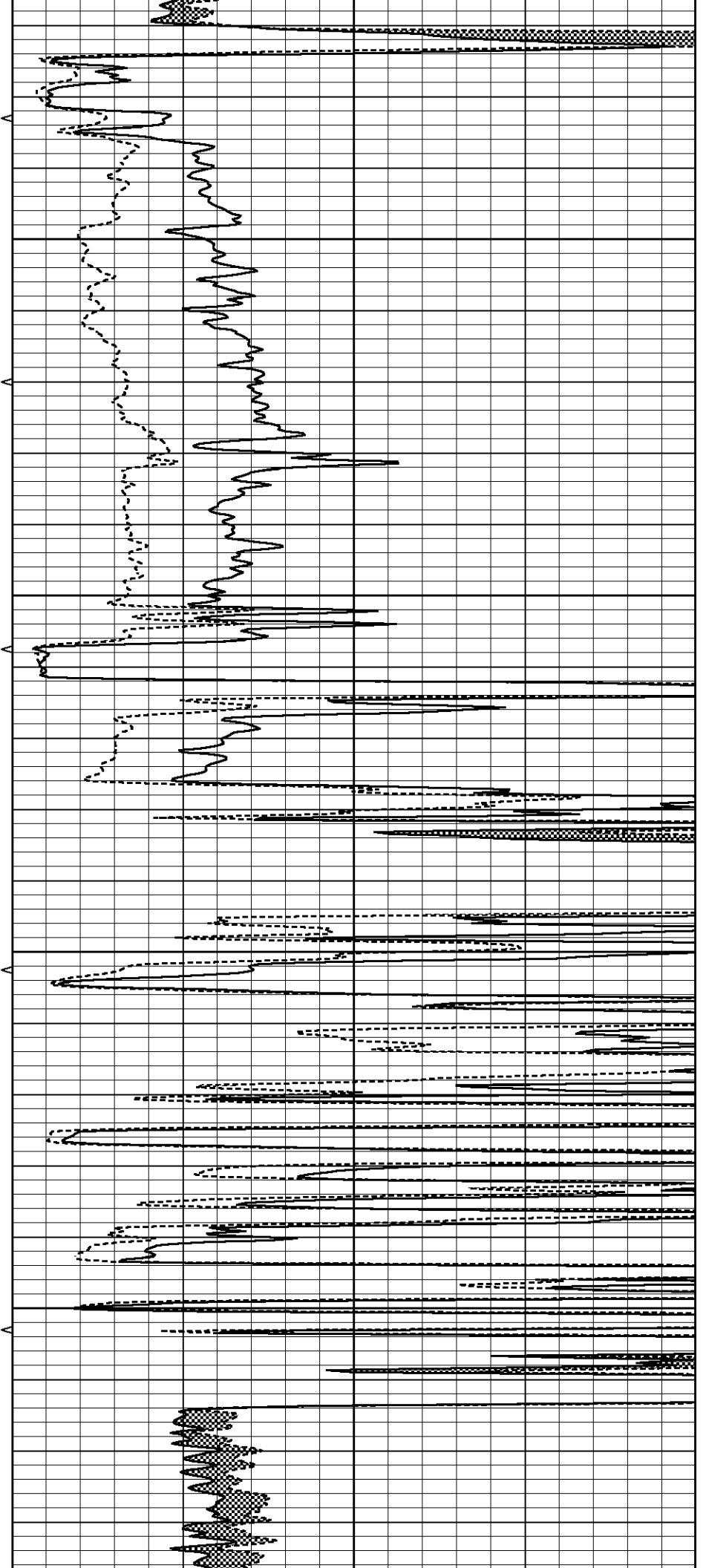


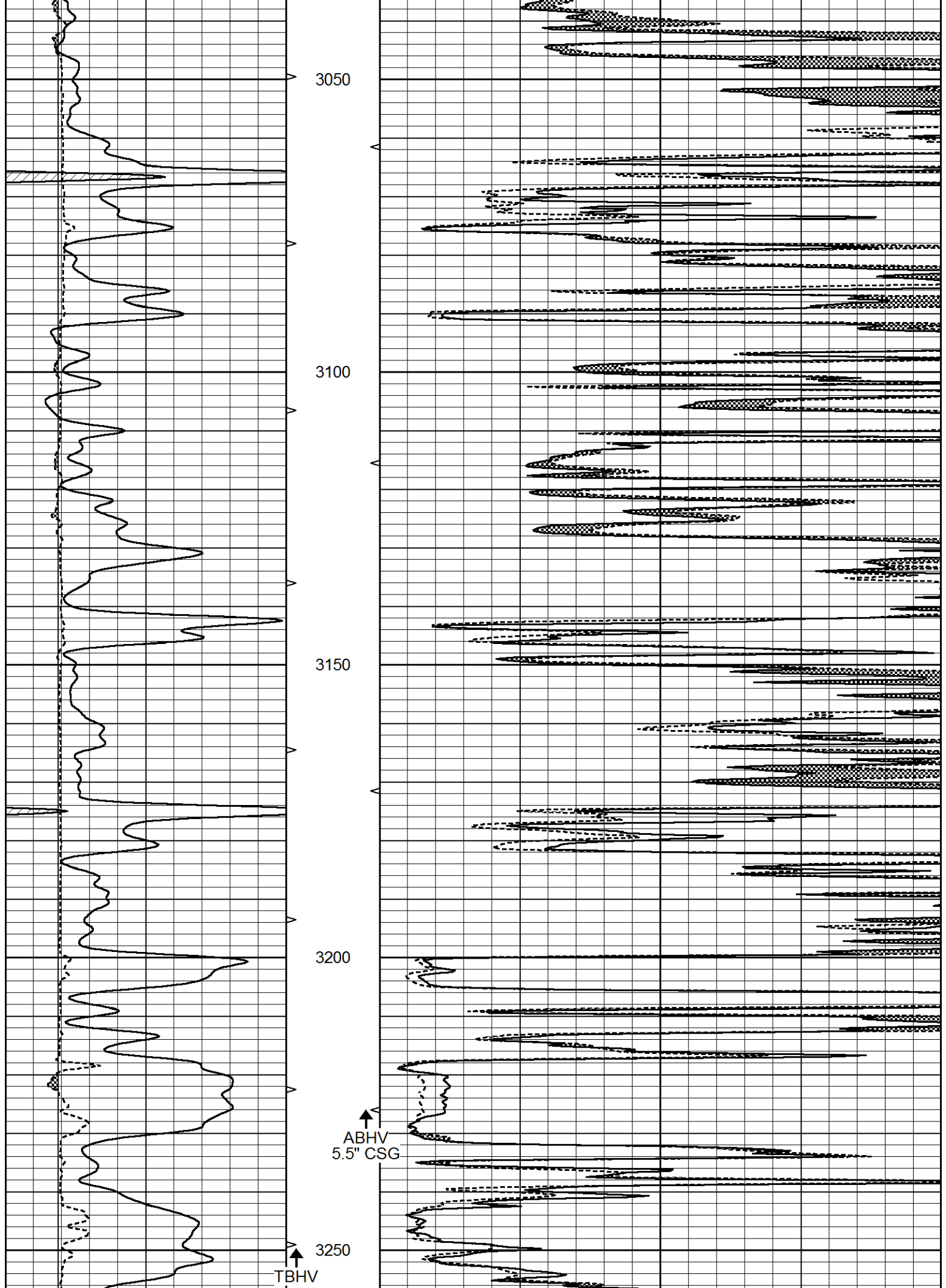
2850

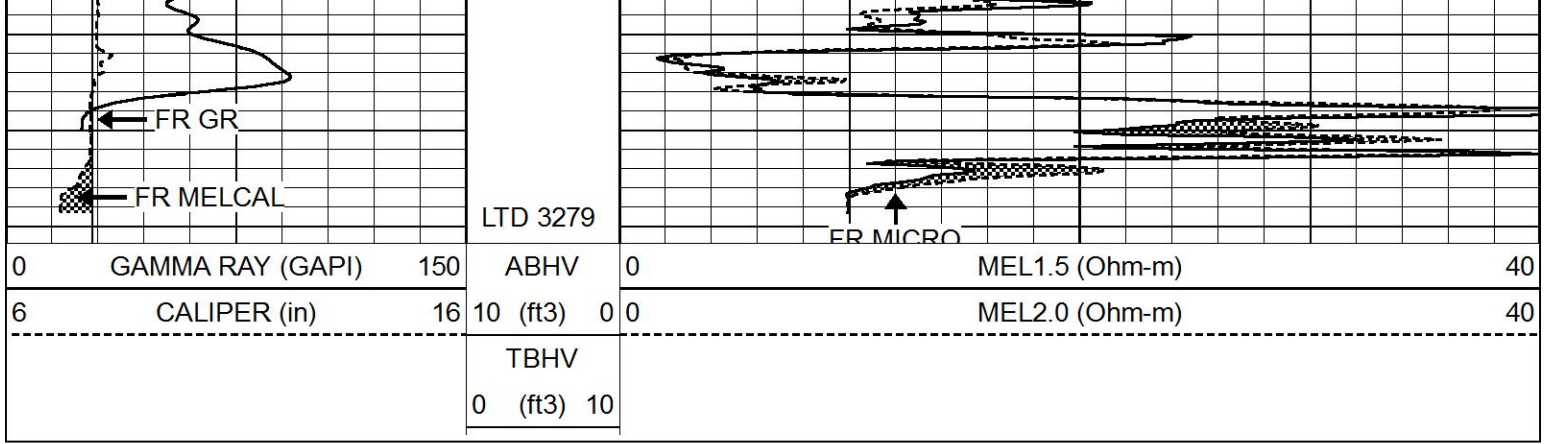
2900

2950

3000

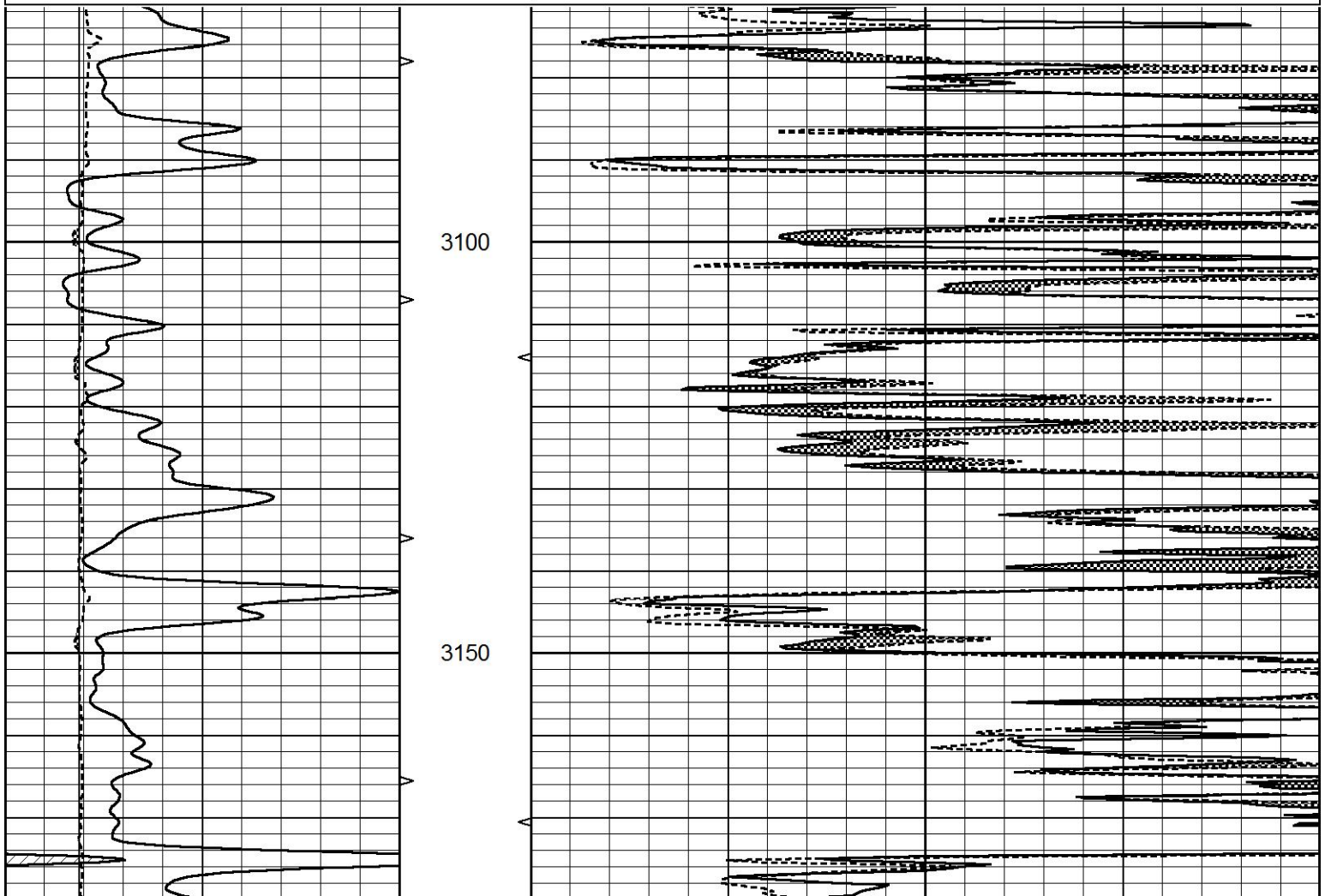
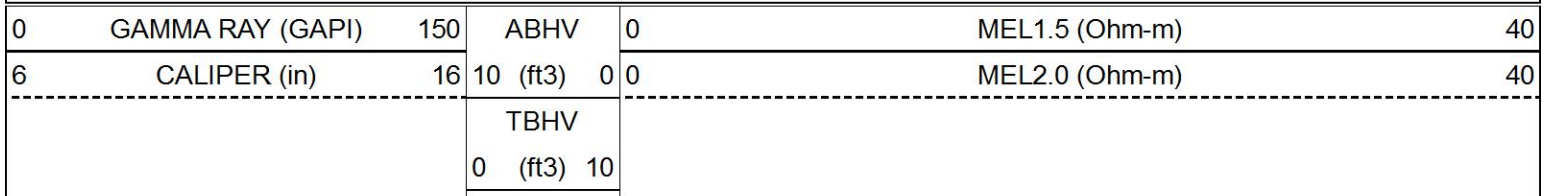


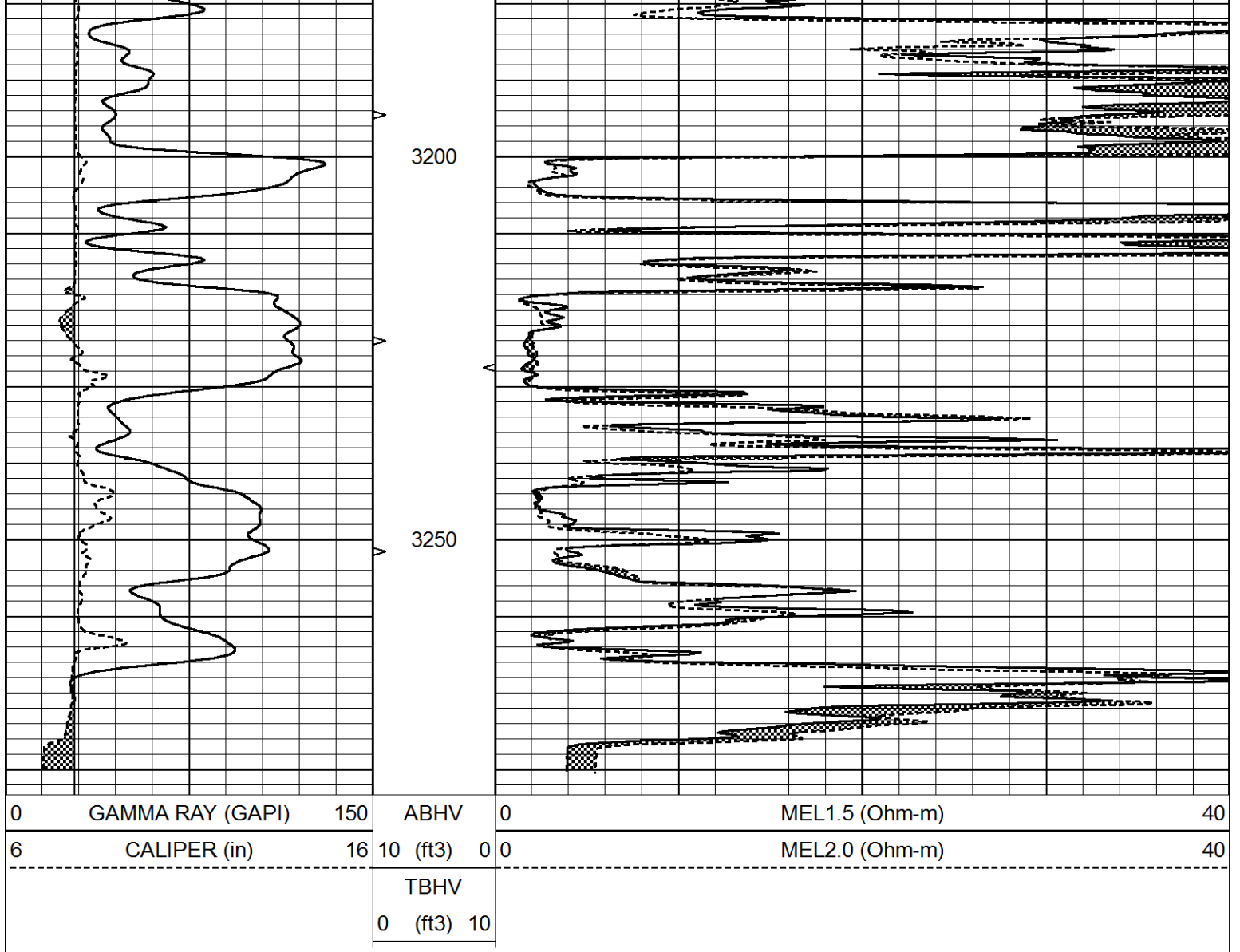




REPEAT SECTION

Database File 6052ddn.db
 Dataset Pathname pass5.1
 Presentation Format _micro
 Dataset Creation Mon Nov 15 00:34:53 2021
 Charted by Depth in Feet scaled 1:240





Calibration Report

Database File 6052ddn.db
 Dataset Pathname pass5.1
 Dataset Creation Mon Nov 15 00:34:53 2021

MICRO_USR Calibration Report

Serial Number:	070911	
Tool Model:	ProbeL	
Performed:	Sun Dec 13 14:24:22 2020	
Caliper Calibration:	Gain=3.755	Offset=1.950
References	Low Cal 8.000	High Cal 14.000
Readings	1.451	3.049
1.5" Calibration:	Gain=45.000	Offset=-0.700
References	Low Cal 0.000	High Cal 20.000
Readings	0.004	0.843
2" Calibration:	Gain=40.000	Offset=-0.650
References	Low Cal 0.000	High Cal 20.000
Readings	0.021	0.810

Readings

0.021

0.010

Microlog Calibration Report

Serial-Model:

070911-ProbeL

Performed:

Sat Apr 11 01:13:01 2015

Readings

References

Results

Zero

Cal

Zero

Cal

m

b

Normal

0.0002

0.4836

V

0.0000

10.0000

Ohm-m

20.6908

-0.0051

Inverse

0.0018

0.6297

V

0.0000

10.0000

Ohm-m

15.9263

-0.0282

Caliper

0.0000

1.0000

V

0.0000

1.0000

in

1.0000

0.0000

Gamma Ray Calibration Report

Serial Number:

070558

Tool Model:

Probe1

Performed:

Fri Oct 30 21:32:56 2020

Calibrator Value:

1.0

GAPI

Background Reading:

0.0

cps

Calibrator Reading:

1.0

cps

Sensitivity:

0.2700

GAPI/cps