



**COMPENSATED
DENSITY/NEUTRON
LOG**

Company MCGINNESS ENERGY COMPANY, INC.

Well WOYDZIAK #1-26

Field

County ELLSWORTH

State KANSAS

Location: API # : 15-053-21377-0000

1460' FSL & 1725' FEL
SW SE NW SE

SEC 26 TWP 17S RGE 10W

Other Services
DILMEL

Elevation

Permanent Datum GROUND LEVEL Elevation 1791
Log Measured From KELLY BUSHING 8' A.G.L.
Drilling Measured From KELLY BUSHING

K.B. 1799
D.F. 1797
G.L. 1791

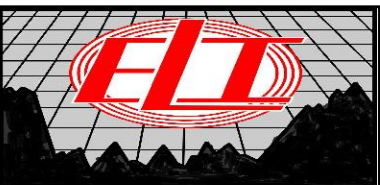
Company	MCGINNESS ENERGY COMPANY, INC.
Well	WOYDZIAK #1-26
Field	
County	ELLSWORTH
State	KANSAS
Date	11/14/21
Run Number	ONE
Depth Driller	3280
Depth Logger	3279
Bottom Logged Interval	3255
Top Log Interval	2200
Casing Driller	8 5/8" @ 284
Casing Logger	284
Bit Size	7 7/8
Type Fluid in Hole	CHEMICAL MUD
Density / Viscosity	9.4/47
pH / Fluid Loss	9.0/9.6
Source of Sample	FLOWLINE
Rm @ Meas. Temp	.80 @ 60F
Rmf @ Meas. Temp	.60 @ 60F
Rmc @ Meas. Temp	.96 @ 60F
Source of Rmf / Rmc	MEASUREMENT
Rm @ BHT	.43 @ 110F
Time Circulation Stopped	2 HOURS
Time Logger on Bottom	////
Maximum Recorded Temperature	110F
Equipment Number	3802
Location	HAYS, KANSAS
Recorded By	JASON CAPPELLUCCI
Witnessed By	LEAH KASTEN

<<< Fold Here >>>

All interpretations are opinions based on inferences from electrical or other measurements and we cannot and do not guarantee the accuracy or correctness of any interpretation, and we shall not, except in the case of gross or willful negligence on our part, be liable or responsible for any loss, costs, damages, or expenses incurred or sustained by anyone resulting from any interpretation made by any of our officers, agents or employees. These interpretations are also subject to our general terms and conditions set out in our current Price Schedule.

Comments

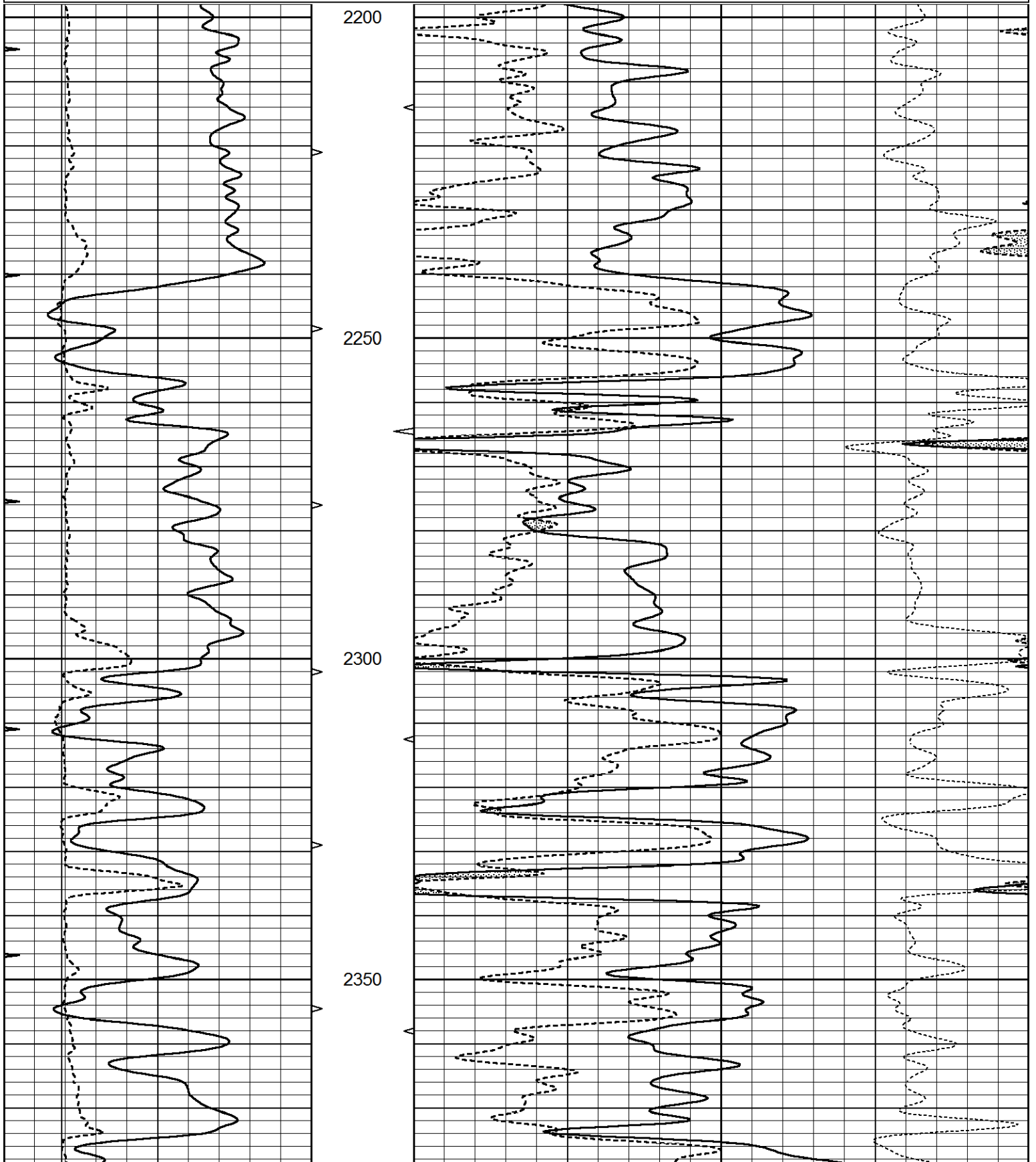
THANK YOU FOR USING ELI WIRELINE SERVICES, HAYS, KS. (785) 628-6395
DIRECTIONS
CLAFLIN, KS. - EAST TO BARTON, ELLSWORTH COUNTY LINE - 3 EAST - 1 NORTH - 1/2 WEST
NORTH INTO

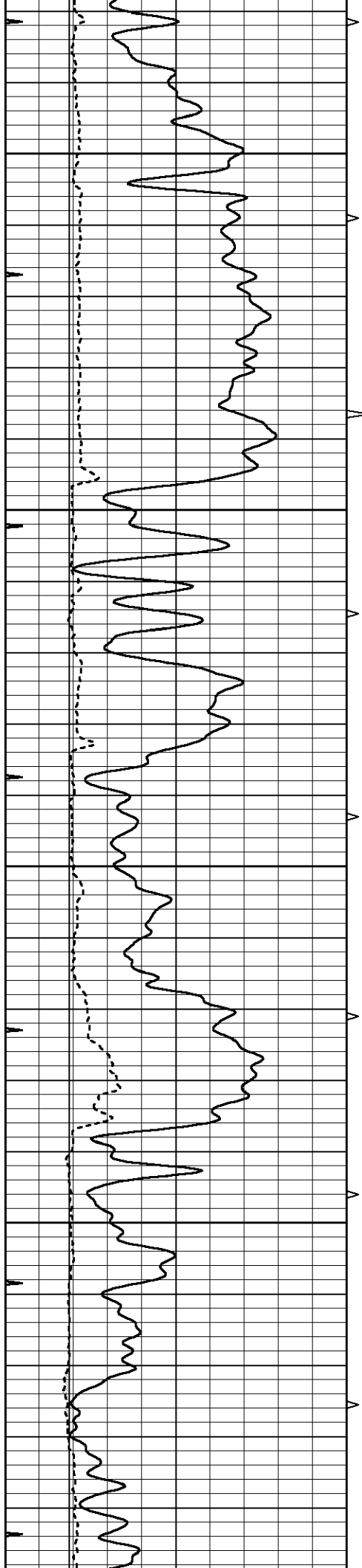


MAIN SECTION

Database File 6052ddn.db
 Dataset Pathname pass3.1
 Presentation Format _den_neu
 Dataset Creation Sun Nov 14 22:51:54 2021
 Charted by Depth in Feet scaled 1:240

0	GAMMA RAY (GAPI)	150	AVTX	30	COMPENSATED DENSITY (pu)	-10
0	MINMK	20	10 (ft3) 0	30	COMPENSATED NEUTRON (pu)	-10
6	CALIPER (in)	16	BVTX		-0.25 CORRECTION (g/cc)	0.25
			0 (ft3) 10			



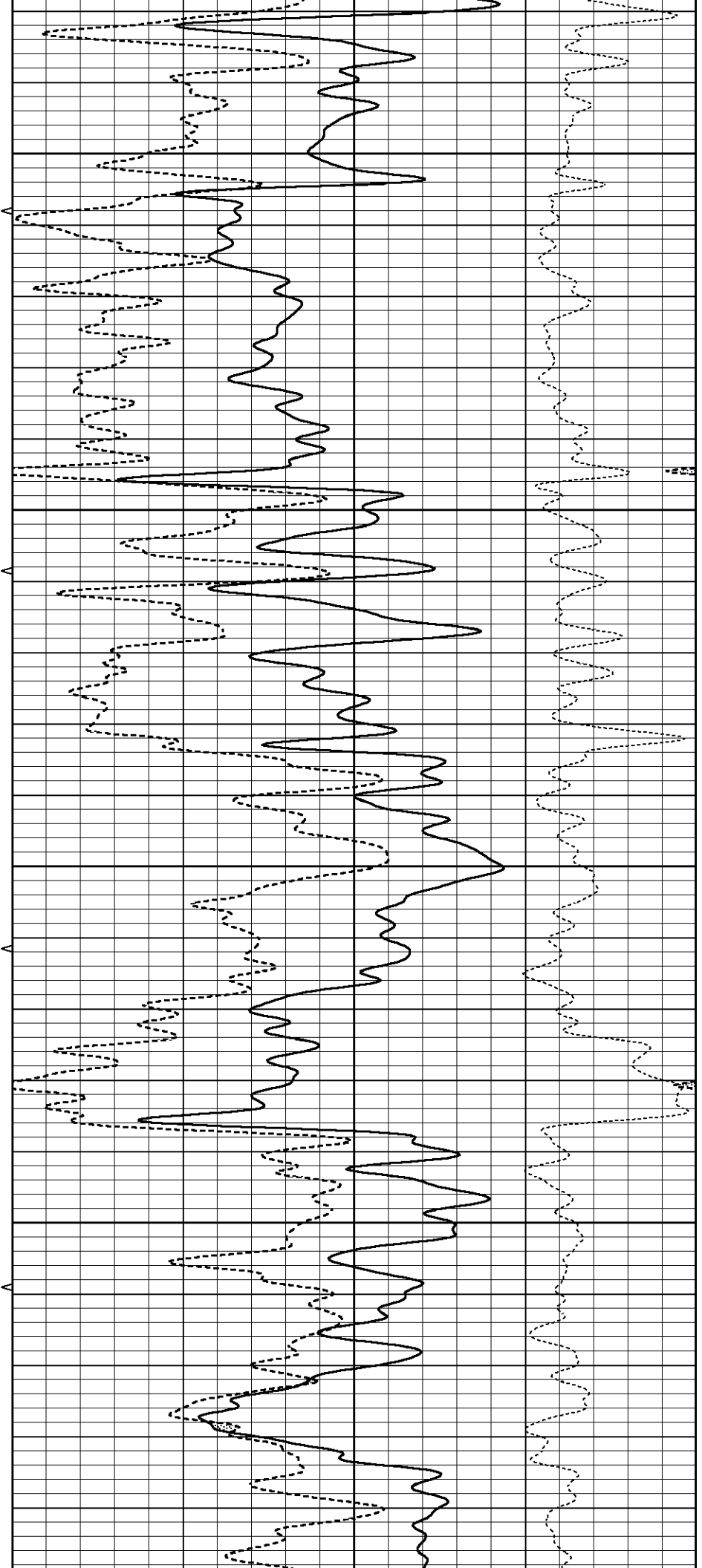


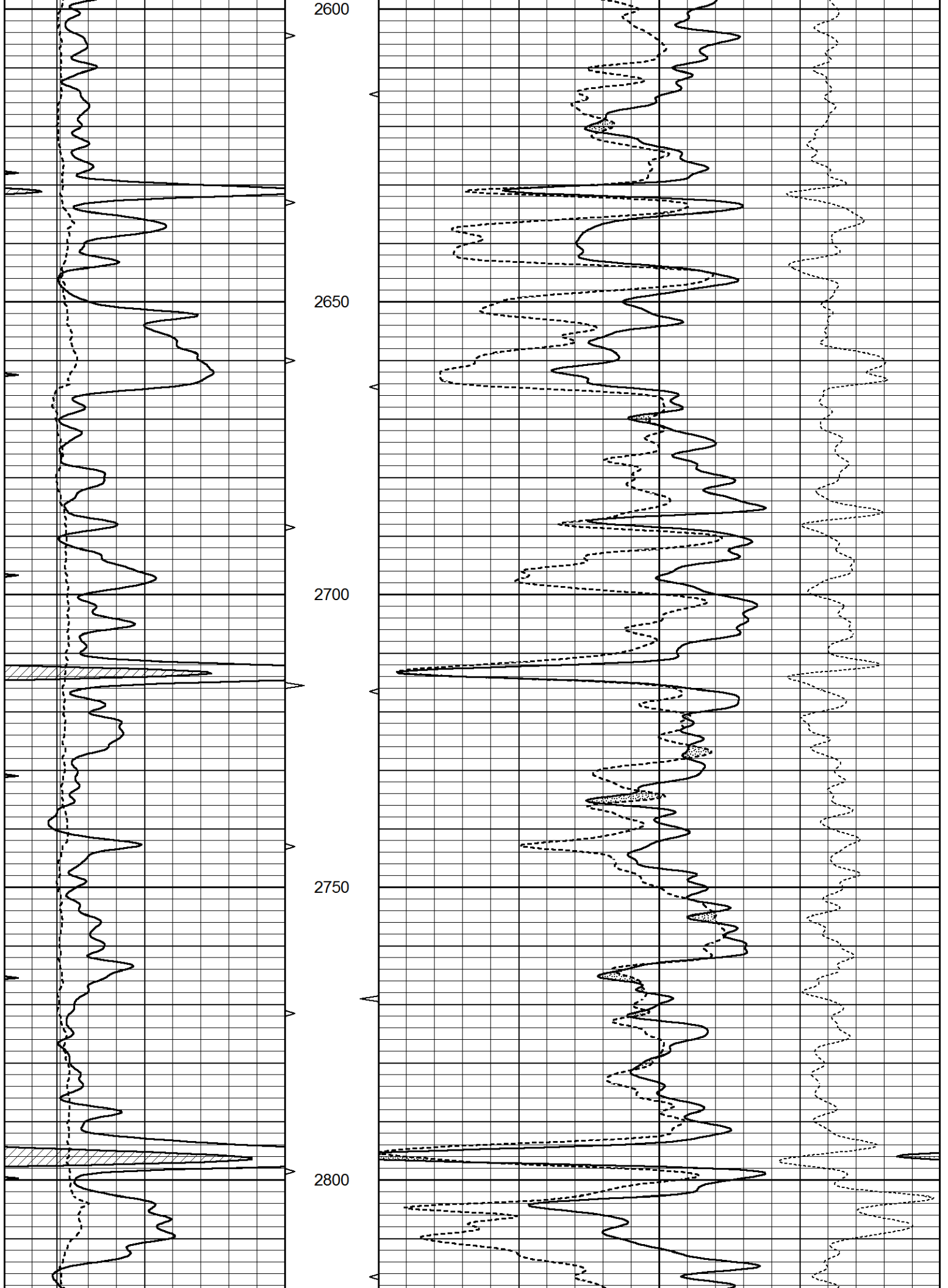
2400

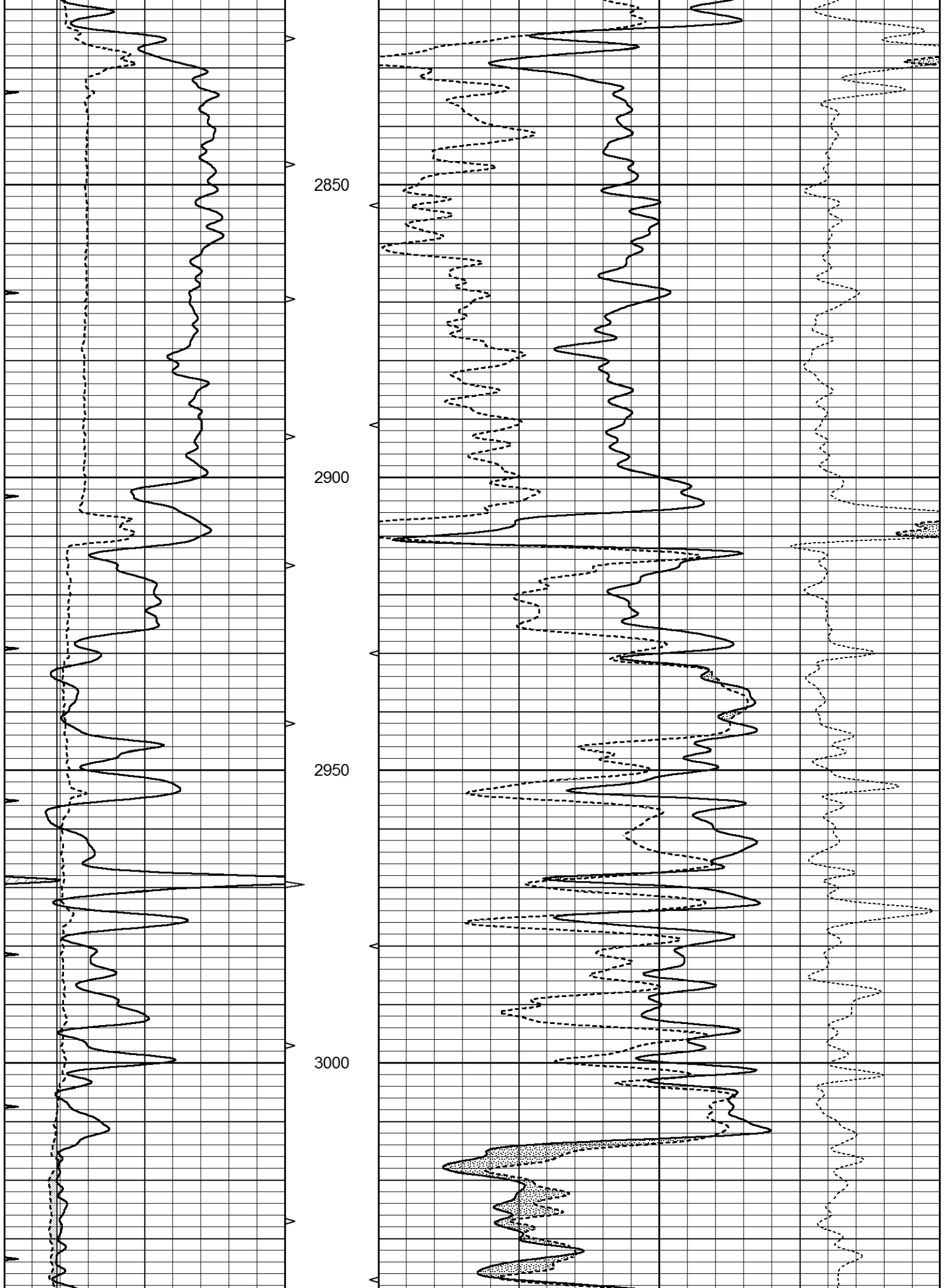
2450

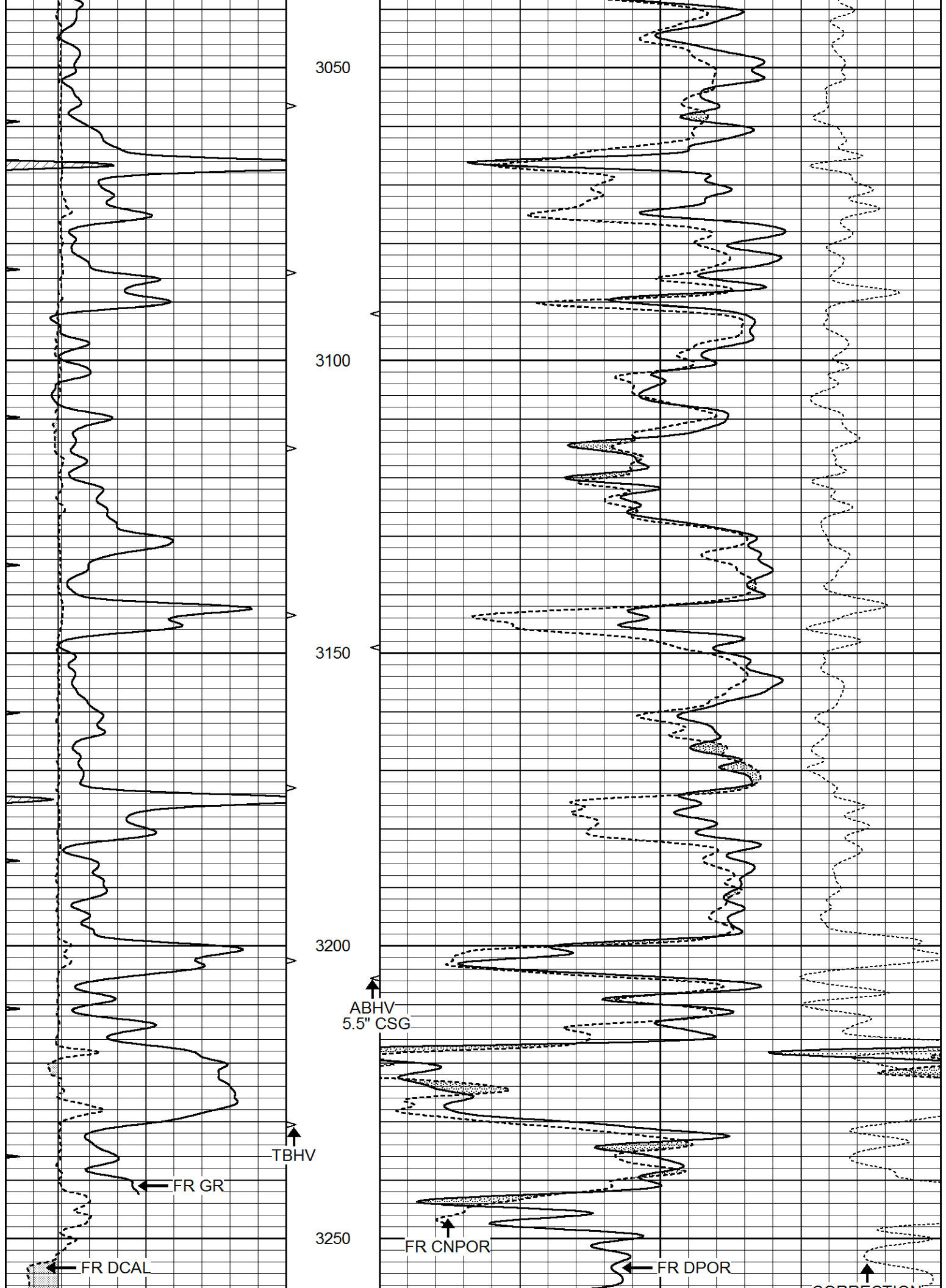
2500

2550









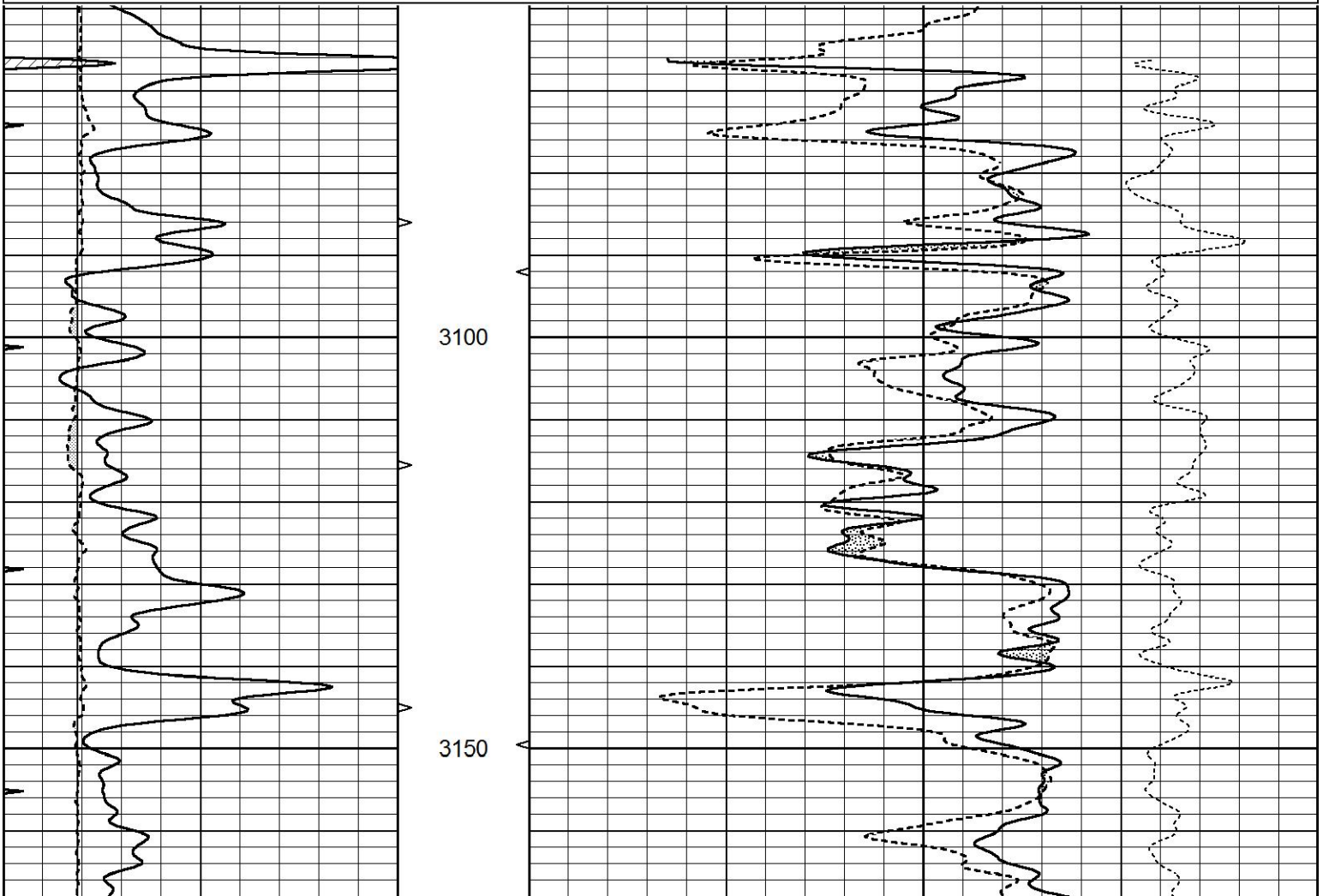
			2.71 LIMESTONE MATRIX			CORRECTION
			LTD 3279			
0	GAMMA RAY (GAPI)	150	AVTX	30	COMPENSATED DENSITY (pu)	-10
0	MINMK	20	10 (ft3) 0	30	COMPENSATED NEUTRON (pu)	-10
6	CALIPER (in)	16	BVTX		-0.25 CORRECTION (g/cc)	0.25
			0 (ft3) 10			

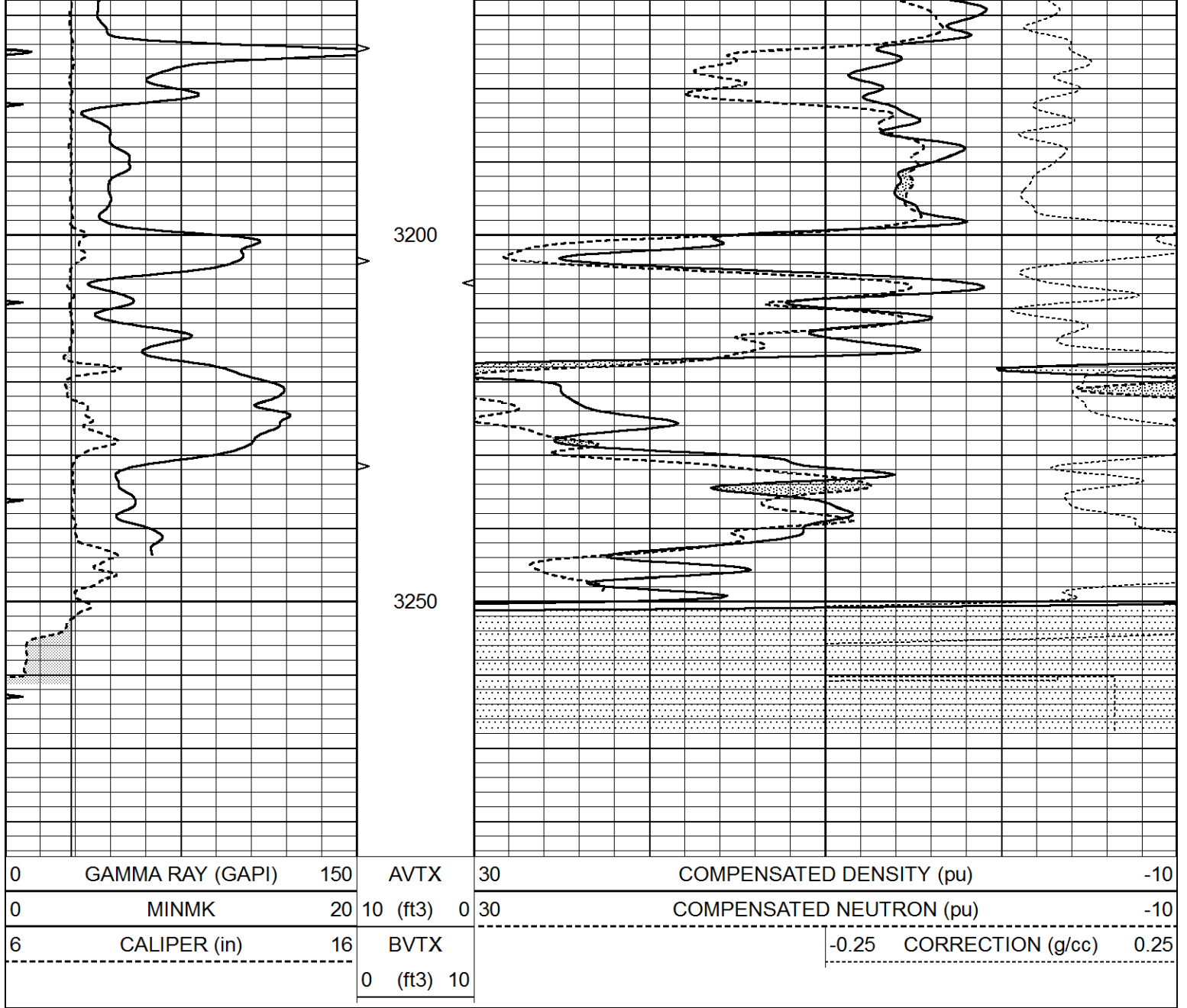


REPEAT SECTION

Database File 6052ddn.db
 Dataset Pathname pass2.1
 Presentation Format _den_neu
 Dataset Creation Sun Nov 14 22:46:16 2021
 Charted by Depth in Feet scaled 1:240

0	GAMMA RAY (GAPI)	150	AVTX	30	COMPENSATED DENSITY (pu)	-10
0	MINMK	20	10 (ft3) 0	30	COMPENSATED NEUTRON (pu)	-10
6	CALIPER (in)	16	BVTX		-0.25 CORRECTION (g/cc)	0.25
			0 (ft3) 10			





Calibration Report

Database File 6052ddn.db
 Dataset Pathname pass2.1
 Dataset Creation Sun Nov 14 22:46:16 2021

Dual Induction Calibration Report

Serial-Model: FW1410-55-Probe
 Surface Cal Performed: Tue Feb 19 11:44:18 2019
 Downhole Cal Performed: Tue Feb 19 11:44:24 2019
 After Survey Verification Performed: Tue Feb 19 11:44:27 2019

Surface Calibration

Loop:	Readings			References			Results	
	Air	Loop	V	Air	Loop	mmho/m	m	b
Deep	0.011	0.656	V	1.000	400.000	mmho/m	618.595	-5.524
Medium	-0.000	0.731	V	1.000	464.000	mmho/m	632.856	1.197
Internal:	Zero	Cal		Zero	Cal		m	b
Deep	0.007	0.649	V	0.000	400.000	mmho/m	623.784	-4.595
Medium	0.004	0.743	V	0.000	464.000	mmho/m	627.284	2.251

Downhole Calibration								
	Readings			References			Results	
	Zero	Cal		Zero	Cal		m'	b'
Deep	-0.824	395.917	mmho/m	-0.976	397.550	mmho/m	1.004	-0.149
Medium	3.565	471.327	mmho/m	3.468	471.590	mmho/m	1.001	-0.099
LL3		7.503	V		1500.000	Ohm-m		
		0.001	V		20.000	Ohm-m		
		-7.481	V		3745.000	mmho-m		

After Survey Verification								
	Readings			Targets			Results	
	Zero	Cal		Zero	Cal		m'	b'
Deep	0.000	0.000	mmho/m	-0.824	395.917	mmho/m	1.000	0.000
Medium	0.000	0.000	mmho/m	3.565	471.327	mmho/m	1.000	0.000
LL3		0.000	Ohm-m		1500.000	Ohm-m		
		0.000	Ohm-m		20.000	Ohm-m		
		0.000	mmho-m		3745.000	mmho-m		

Litho Density Calibration Report
 Serial: 140704
 Model: V4_10P
 Source Number: 74GBq-19

Master Calibration				Performed: Mon Dec 07 12:12:14 2020			
	Background	Aluminum		Magnesium			
Window 1	557.73	5525.14		24361.20	cps		
Window 2	47.08	1245.09		5901.17	cps		
Window 4	239.06	1250.70		5456.76	cps		
Window 5	564.08	8300.56		16134.07	cps		
Window 6	44.21	1356.78		2705.40	cps		
Window 8	267.87	2686.97		5150.30	cps		
Bulk Density	-	2.6020		1.6830	g/cc		
Pe	-	3.0000		2.5070	b/e		
LS Alpha:	: -1.8719	SS Alpha:	: -0.8000	LS CPE:		: 1.1424	
LS Beta:	: 135562.6841	SS Beta:	: 20128.7209	SS CPE:		: 1.5489	

Before Survey Background Counts Verification			Performed: Wed Dec 31 18:00:00 1969		
Window 1	0.00	cps			
Window 2	0.00	cps			
Window 4	0.00	cps			
Window 5	0.00	cps			
Window 6	0.00	cps			
Window 8	0.00	cps			

After Survey Background Counts Verification			Performed: Wed Dec 31 18:00:00 1969		
Window 1	0.00	cps			
Window 2	0.00	cps			
Window 4	0.00	cps			
Window 5	0.00	cps			
Window 6	0.00	cps			
Window 8	0.00	cps			

Results		Readings		References (in)		Gain	Offset
Low	High	Low	High				
5852.8	8972.7	8.0	14.0			0.0	-3.5

Before Survey Caliper Verification

Performed:

	Reference	Reading
Caliper (in)	_____	_____

After Survey Caliper Verification

Performed:

	Reference	Reading
Caliper (in)	_____	_____

Compensated Neutron Calibration Report

Serial Number: 080621PMC
Tool Model: NABORS

PRE-SURVEY VERIFICATION

Detector	Readings	Measured	Target
Short Space	cps		
Long Space	cps	pu	pu

POST-SURVEY VERIFICATION

Detector	Readings	Measured	Target
Short Space	cps		
Long Space	cps	pu	pu

Gamma Ray Calibration Report

Serial Number: 7
Tool Model: Probe1
Performed: Tue Jan 19 17:50:08 2021

Calibrator Value: 1.0 GAPI

Background Reading: 0.0 cps
Calibrator Reading: 1.0 cps

Sensitivity: 0.5300 GAPI/cps