



**COMPENSATED DENSITY
NEUTRON LOG**

Company CLAPP OIL COMPANY Well SMITH # C-1 Field OLSEN County COWLEY State KANSAS	Company CLAPP OIL COMPANY Well SMITH # C-1 Field OLSEN County COWLEY State KANSAS
Location: API #: 15-035-24747-00-00 SWNE SW/NE 3390' FSL & 3390' FWL SEC 1 TWP 35S RGE 7E Permanent Datum GL Log Measured From GL Drilling Measured From GL	Other Services ILD Elevation 1224 K.B. D.F. G.L. 1224
Date 10-18-21 Run Number ONE Depth Driller 2952 Depth Logger 2950 Bottom Logged Interval 2947 Top Log Interval 350 Casing Driller 8.625" @ 325' Casing Logger 8.625" @ 325' Bit Size 7.875" Type Fluid in Hole CHEMICAL Density / Viscosity 9.2 / 55 pH / Fluid Loss 9.5 / 8.0 Source of Sample PIT Rm @ Meas. Temp 3.3 @ 80 Rmf @ Meas. Temp 2.6 @ 80 Rmc @ Meas. Temp 3.8 @ 80 Source of Rmf / Rmc CAL Rm @ BHT 2.3 @ 117 Time Circulation Stopped 7:00 PM Time Logger on Bottom 10:00 PM Maximum Recorded Temperature 117 Equipment Number OW2 Location HOMINY, OK Recorded By MACKEY Witnessed By MR. CLAPP	Elevation 1224 KIDD WALLER MR. WOLFE

<<< Fold Here >>>

All interpretations are opinions based on inferences from electrical or other measurements and we cannot and do not guarantee the accuracy or correctness of any interpretation, and we shall not, except in the case of gross or willful negligence on our part, be liable or responsible for any loss, costs, damages, or expenses incurred or sustained by anyone resulting from any interpretation made by any of our officers, agents or employees. These interpretations are also subject to our general terms and conditions set out in our current Price Schedule.

Comments

FILE # OW2-8993 CLAPP OIL
THANK YOU FOR USING OSAGE WIRELINE

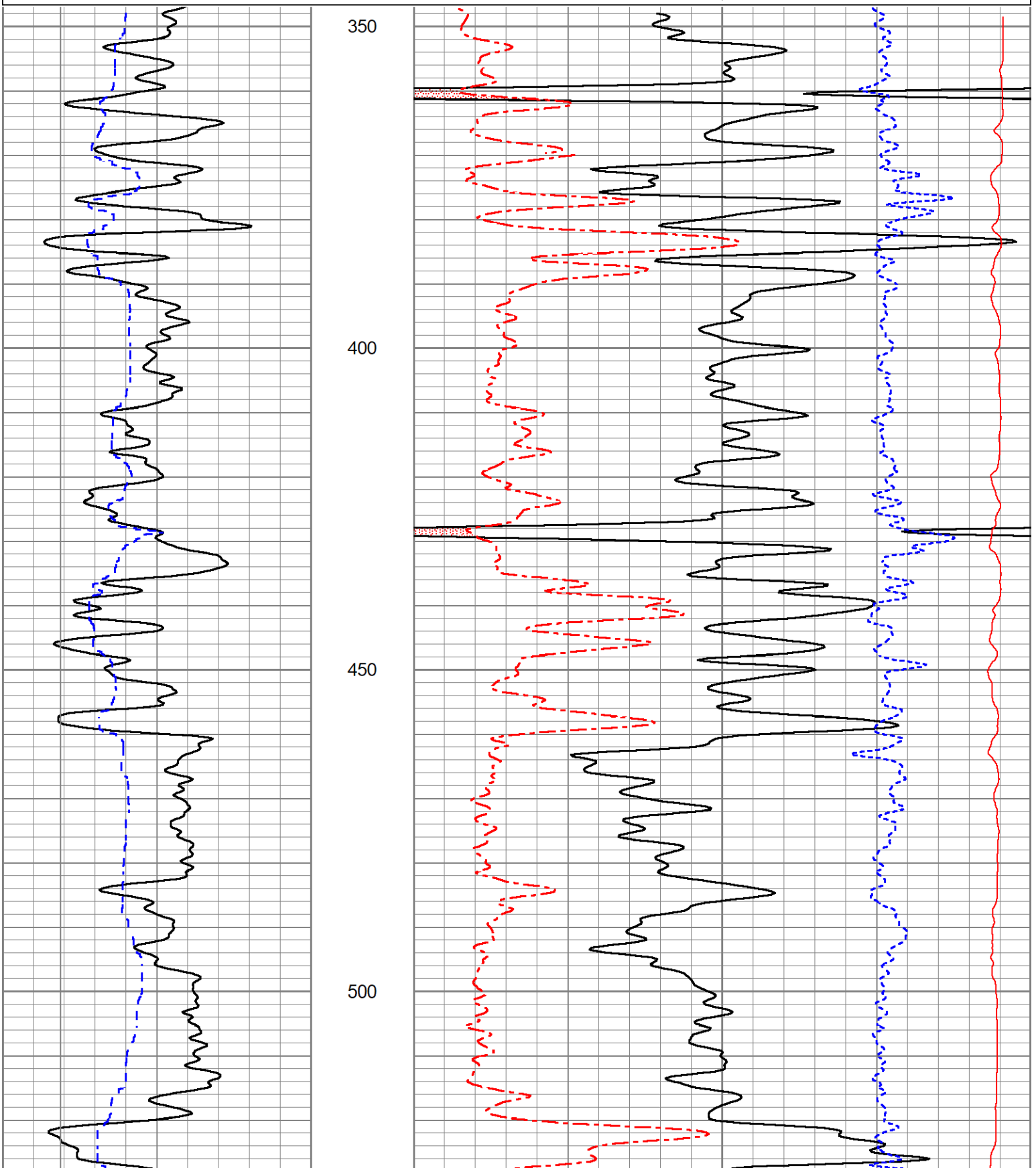


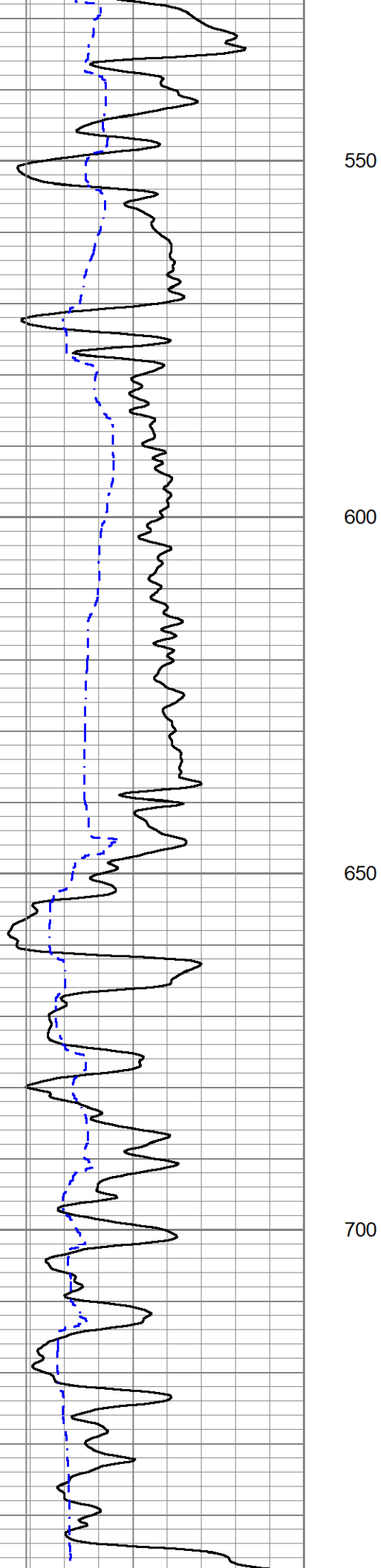
5" DENSITY NEUTRON LOG

Database File ow2-8993 clapp oil.db
 Dataset Pathname pass1.3
 Presentation Format mmcdln5
 Dataset Creation Mon Oct 18 23:02:05 2021
 Charted by Depth in Feet scaled 1:240

0	Gamma Ray (GAPI)	150
6	Bit size (in)	16
6	Density Caliper (in)	16

30	Density Porosity (pu)	-10
30	Neutron Porosity (pu)	-10
-0.5	Correction (g/cc)	0.5
3000	Line Tension (lb)	500



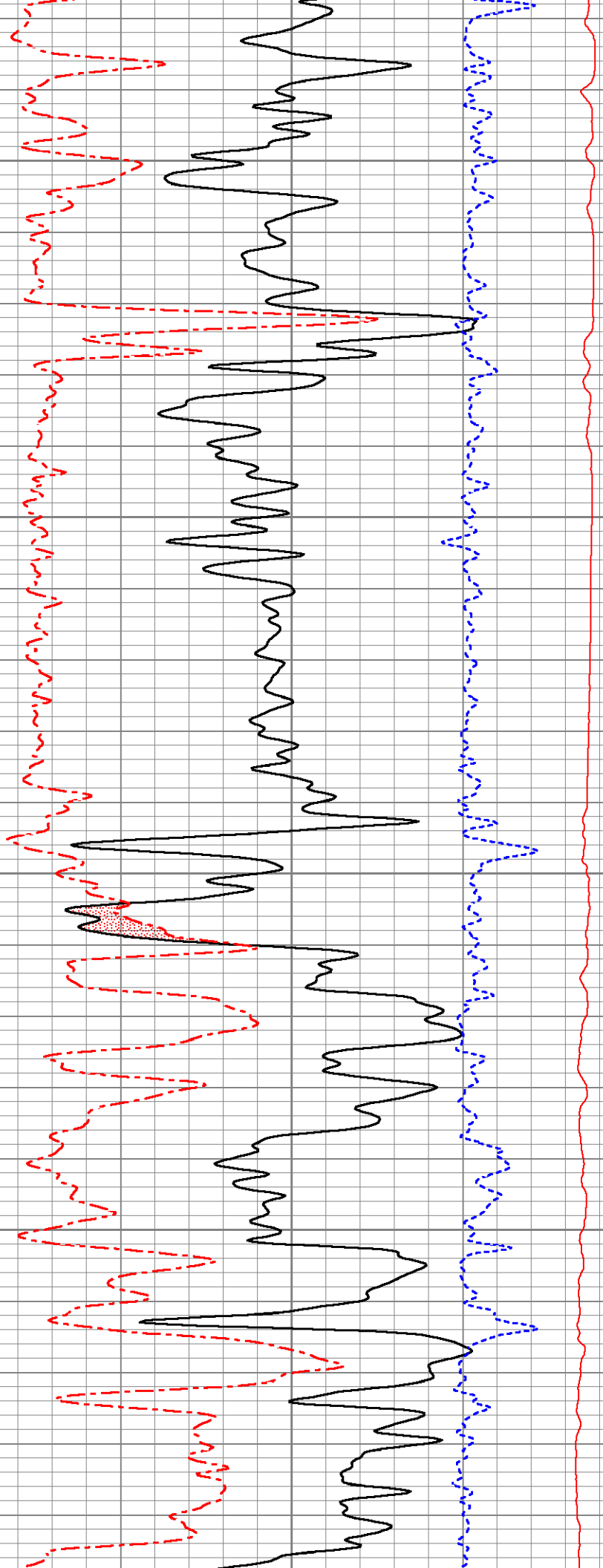


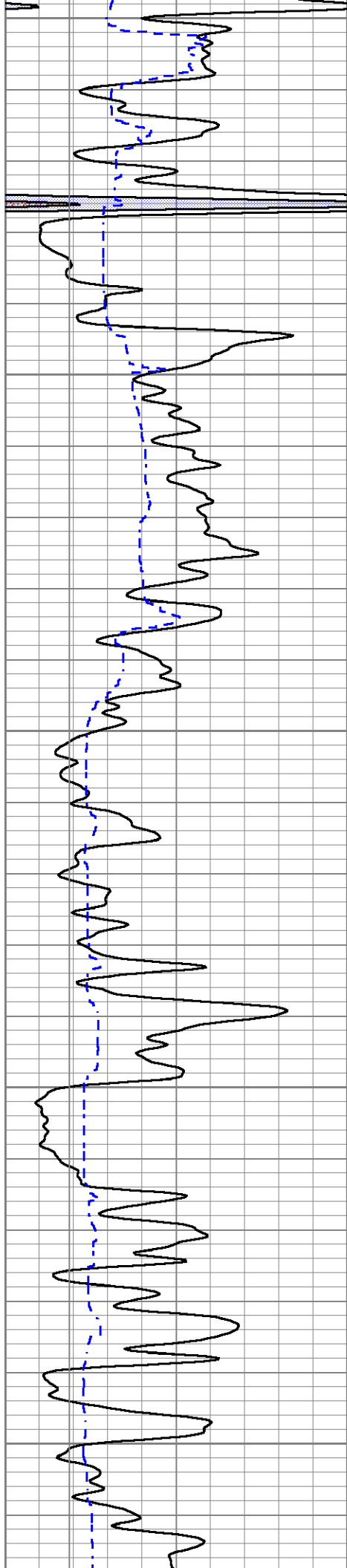
550

600

650

700





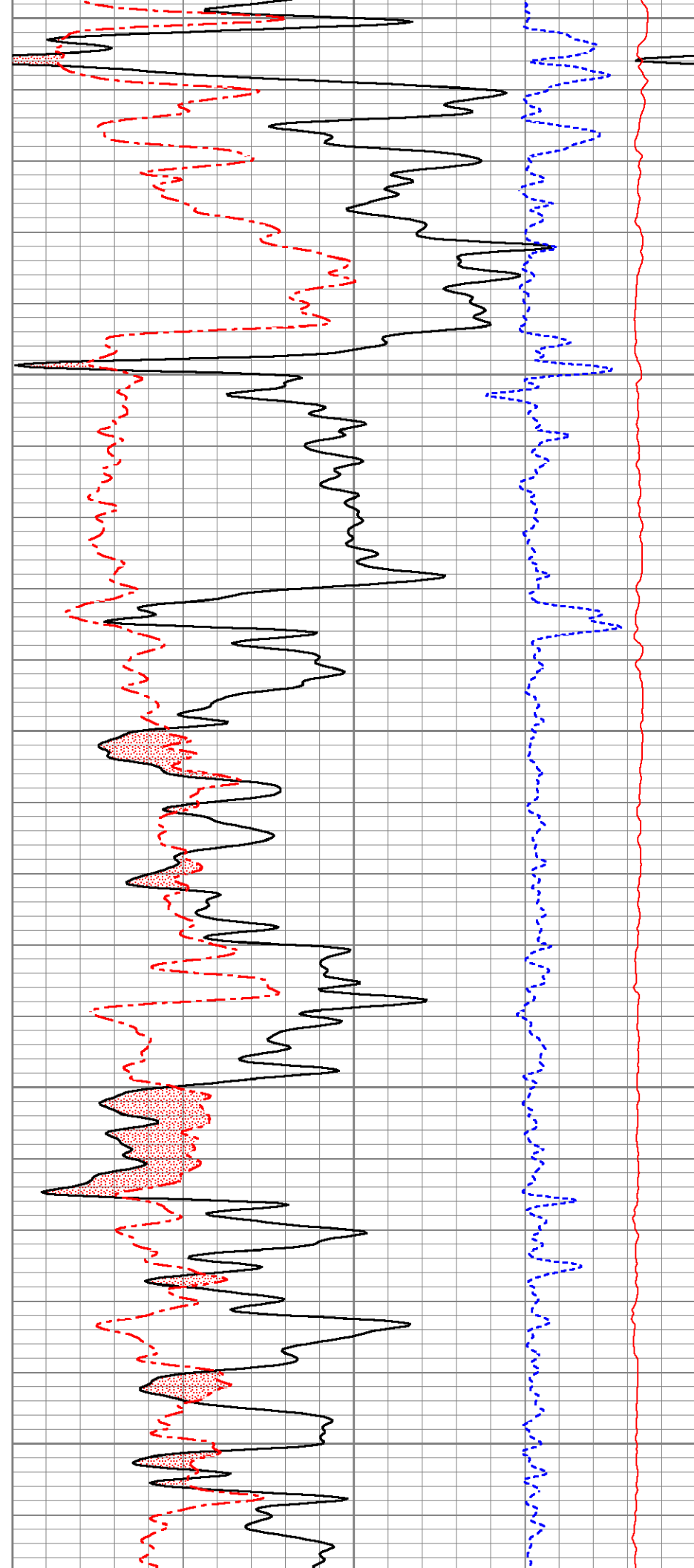
750

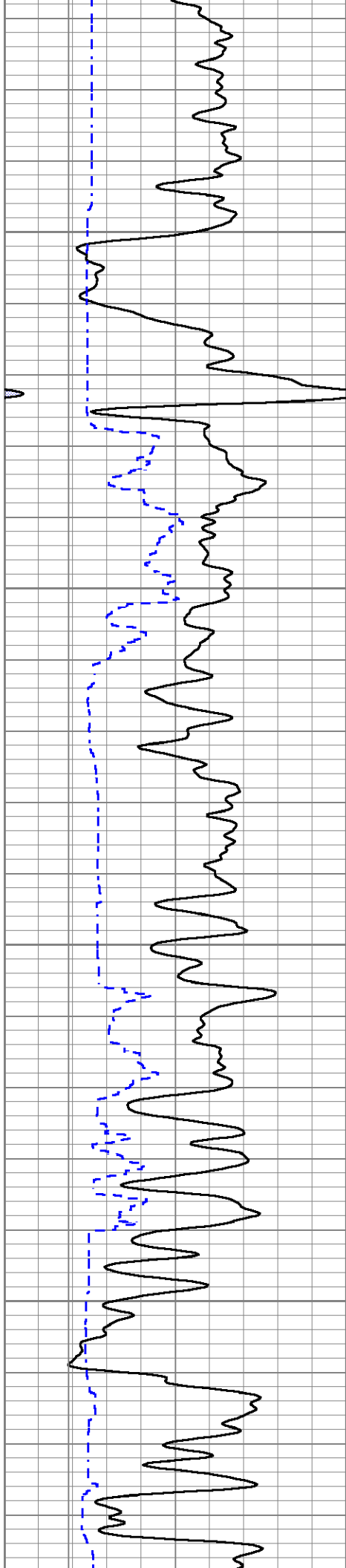
800

850

900

950



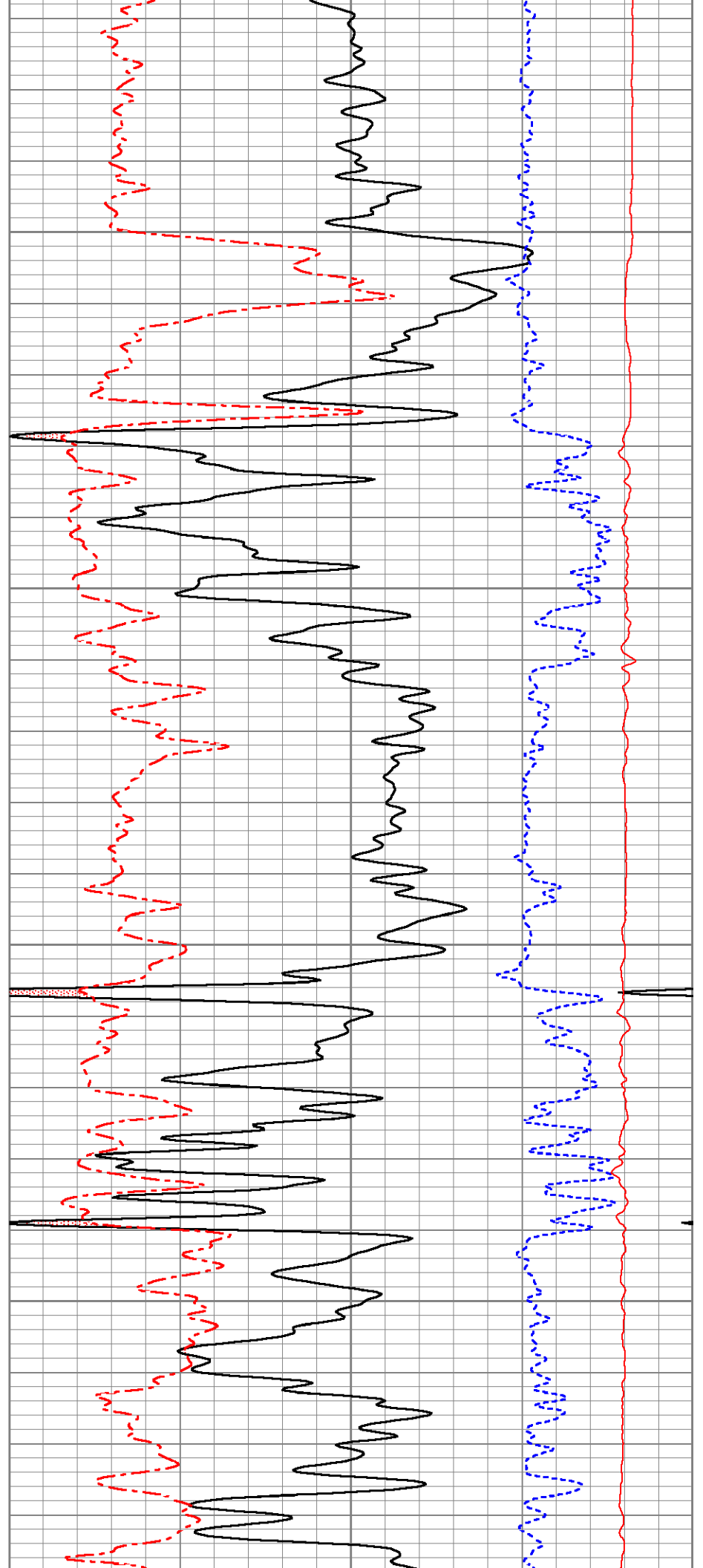


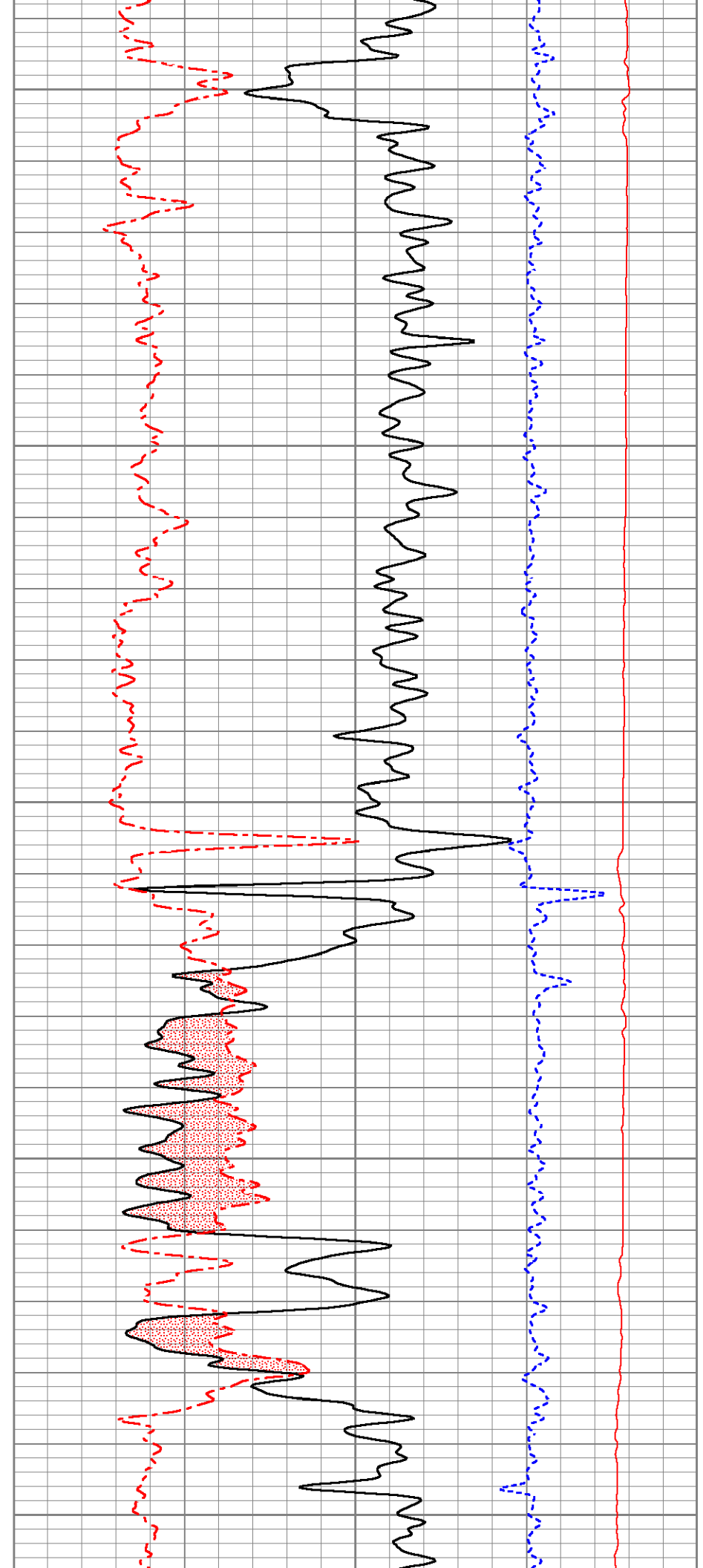
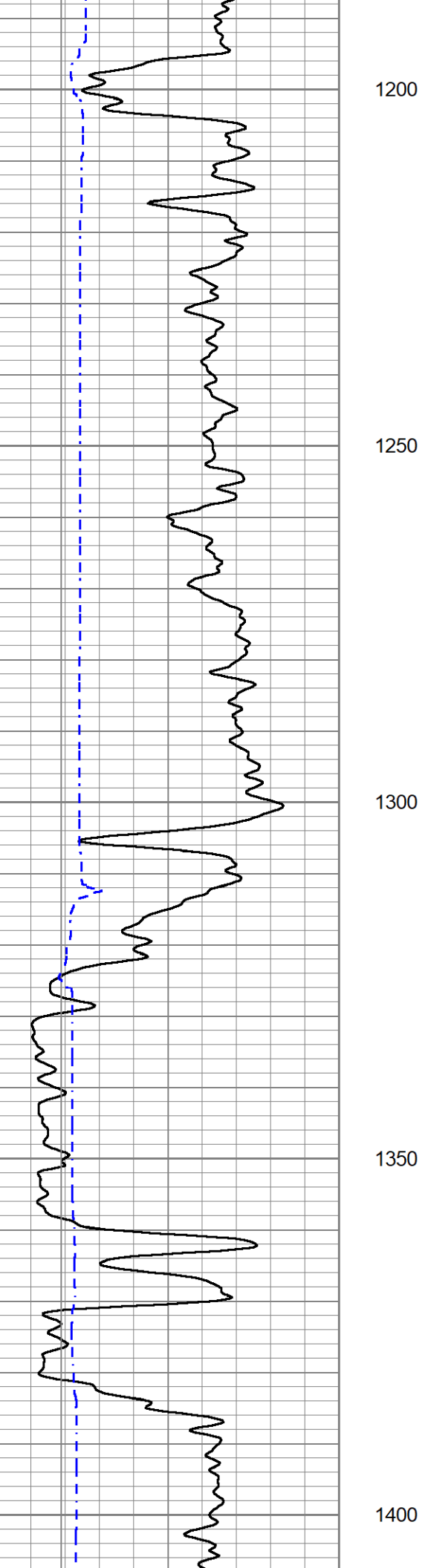
1000

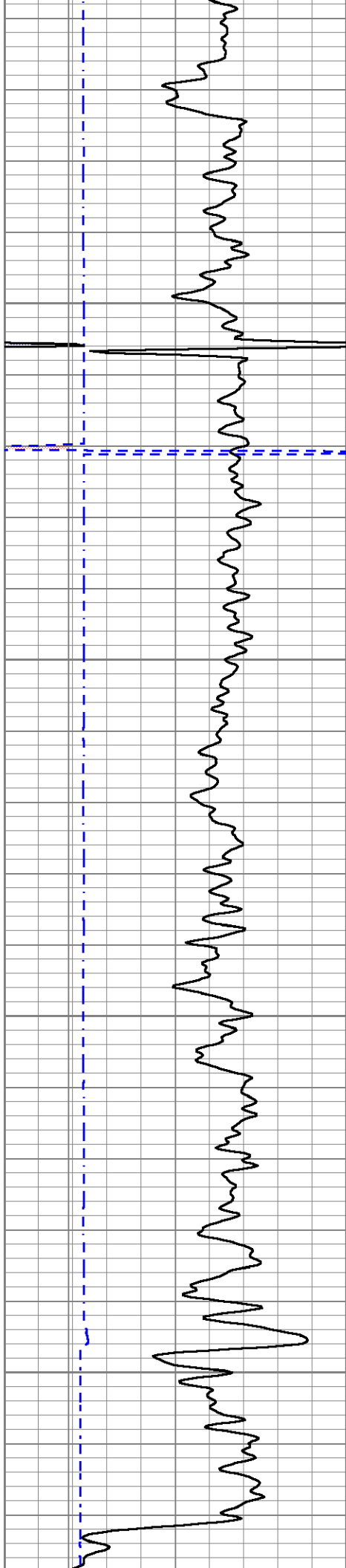
1050

1100

1150





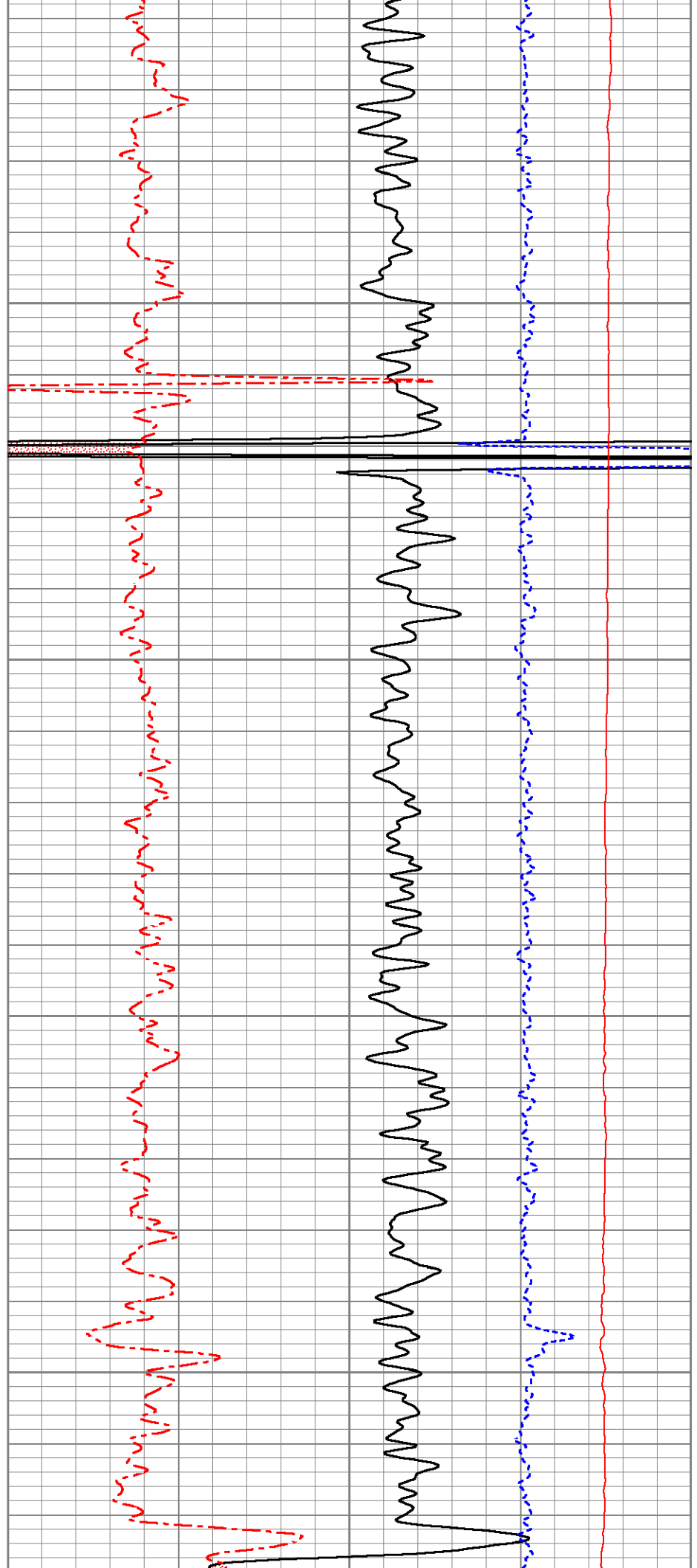


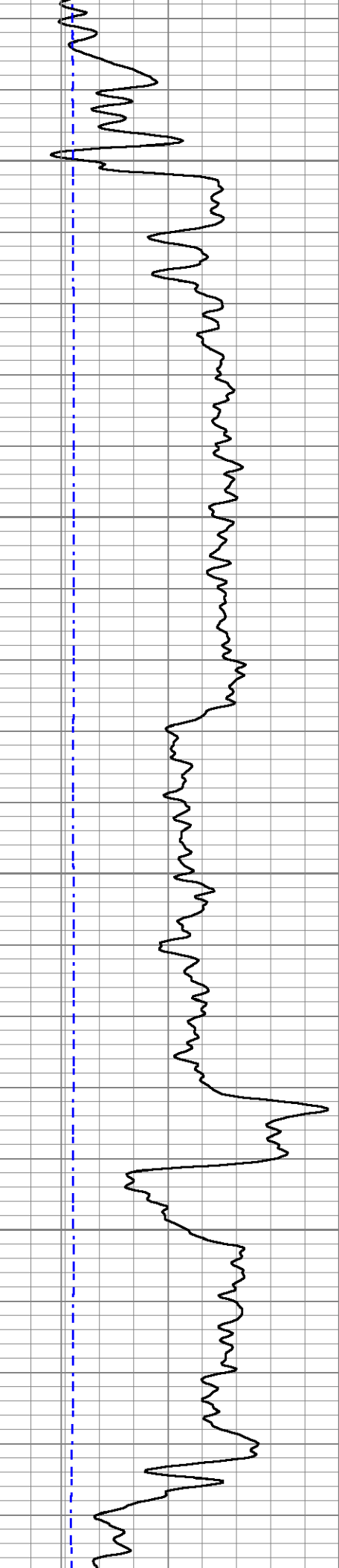
1450

1500

1550

1600



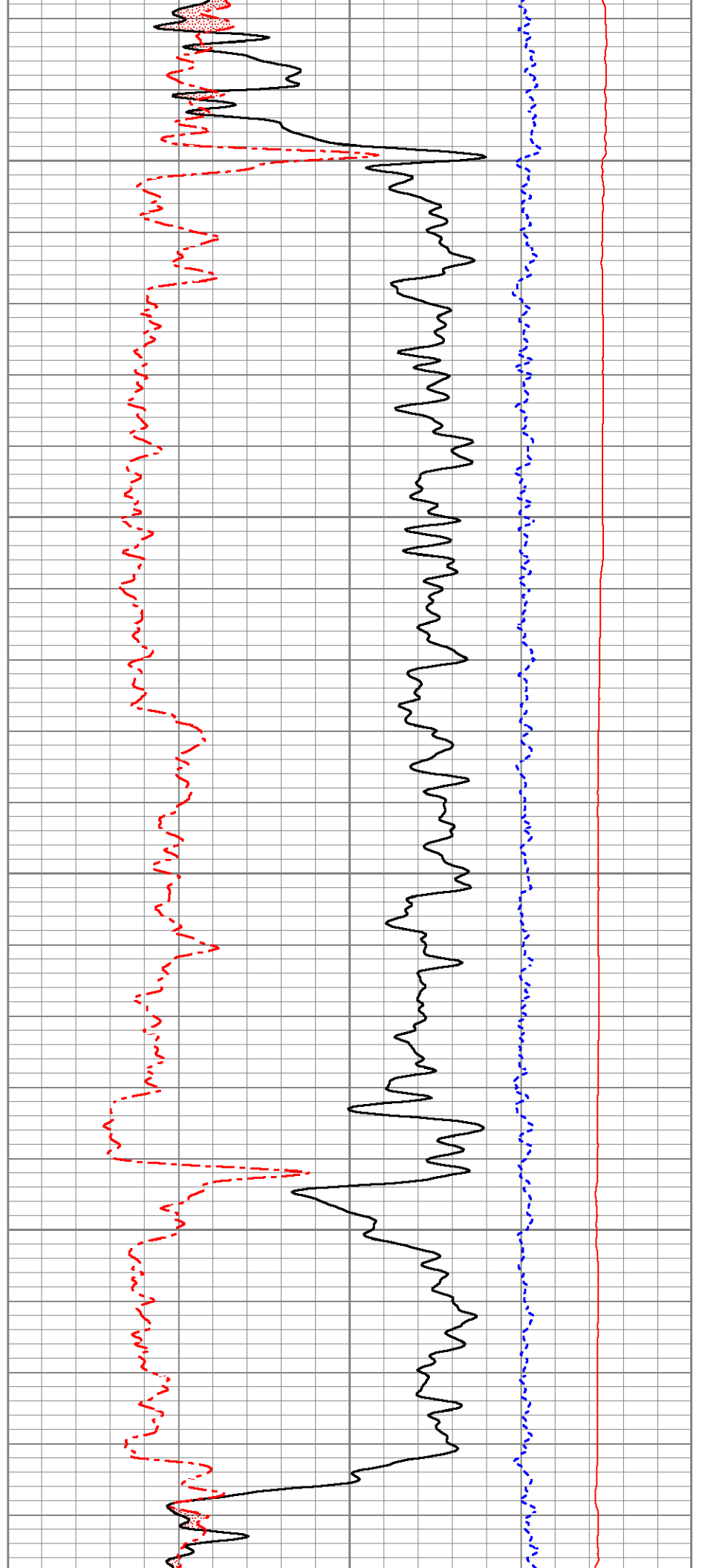


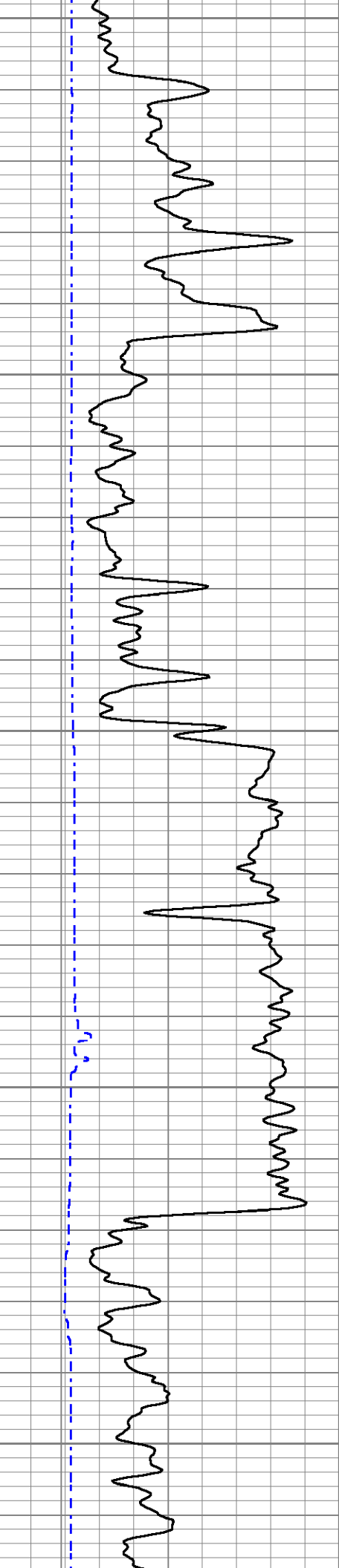
1650

1700

1750

1800





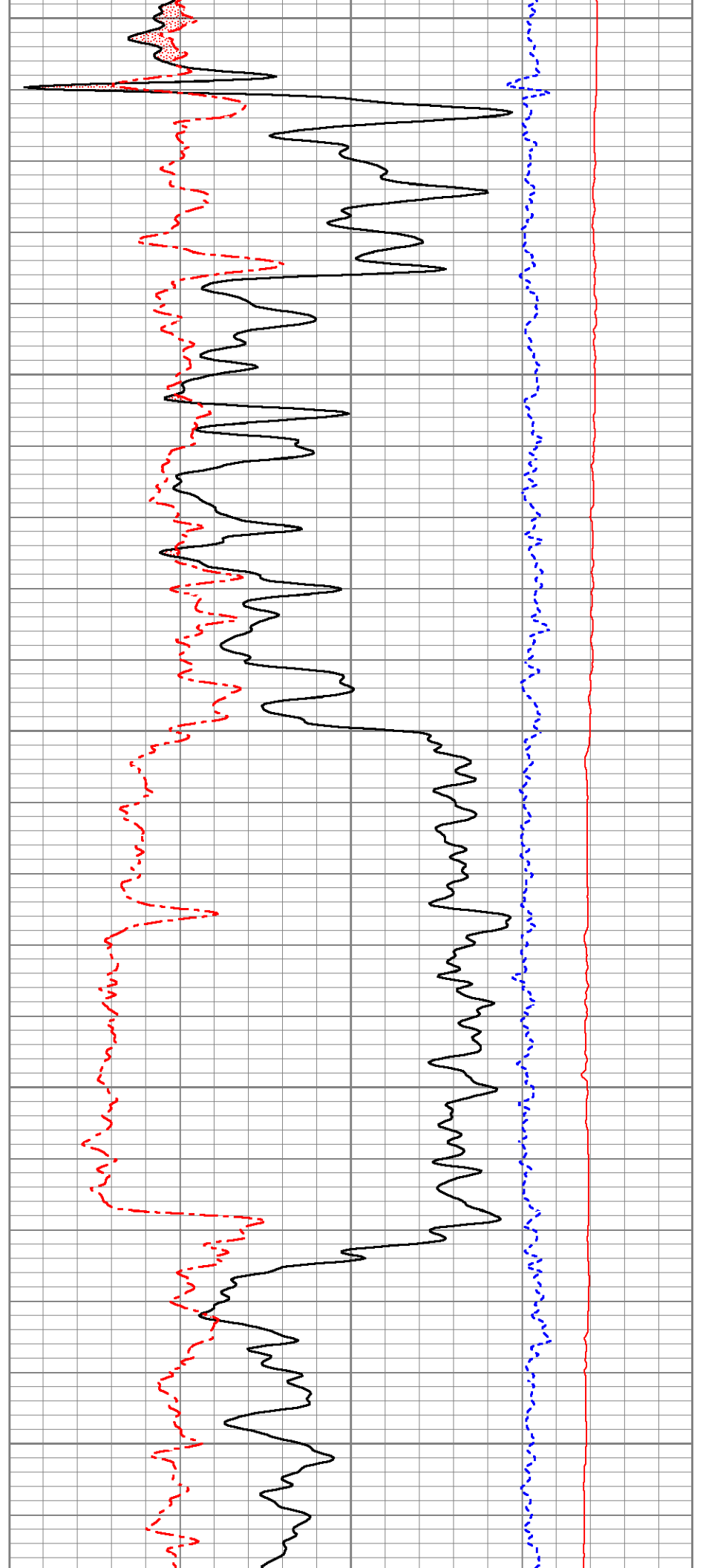
1850

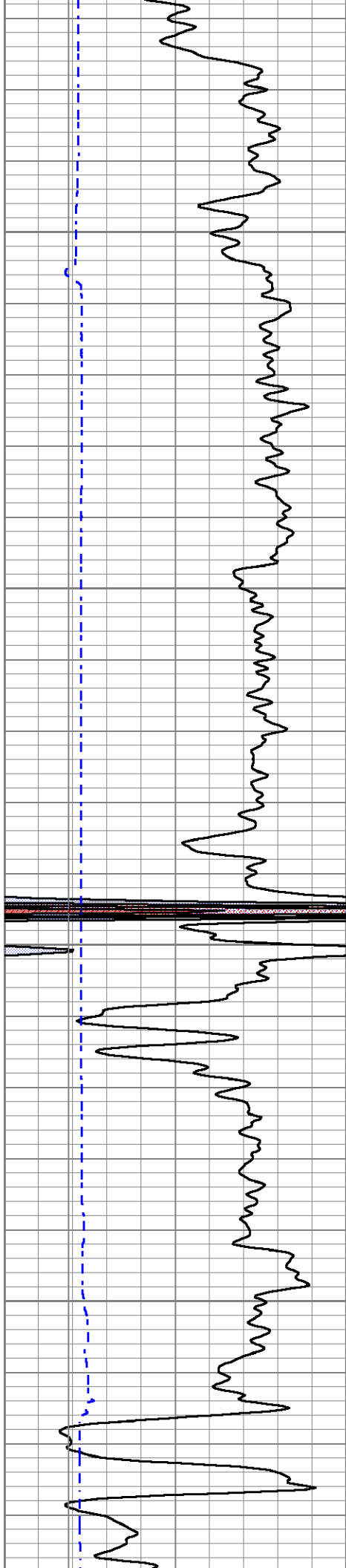
1900

1950

2000

2050



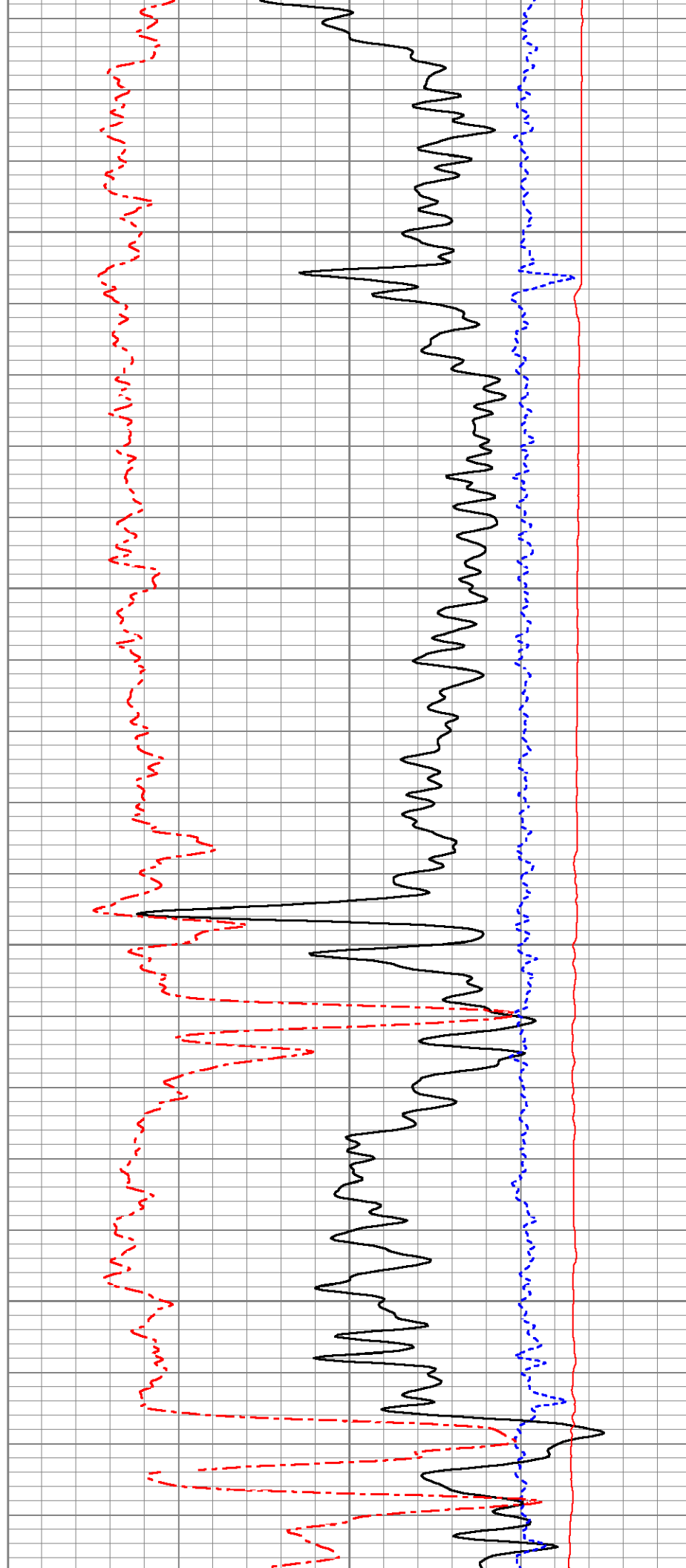


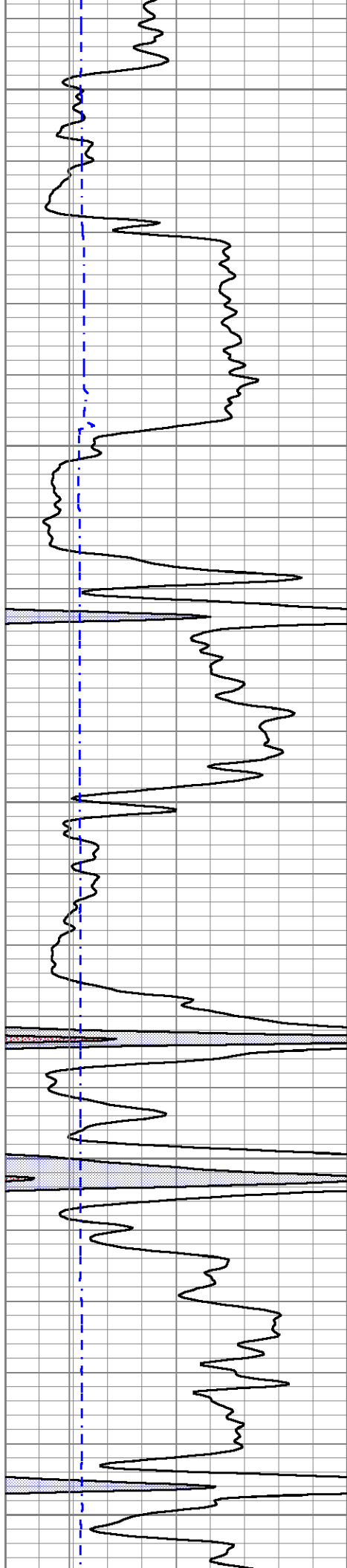
2100

2150

2200

2250





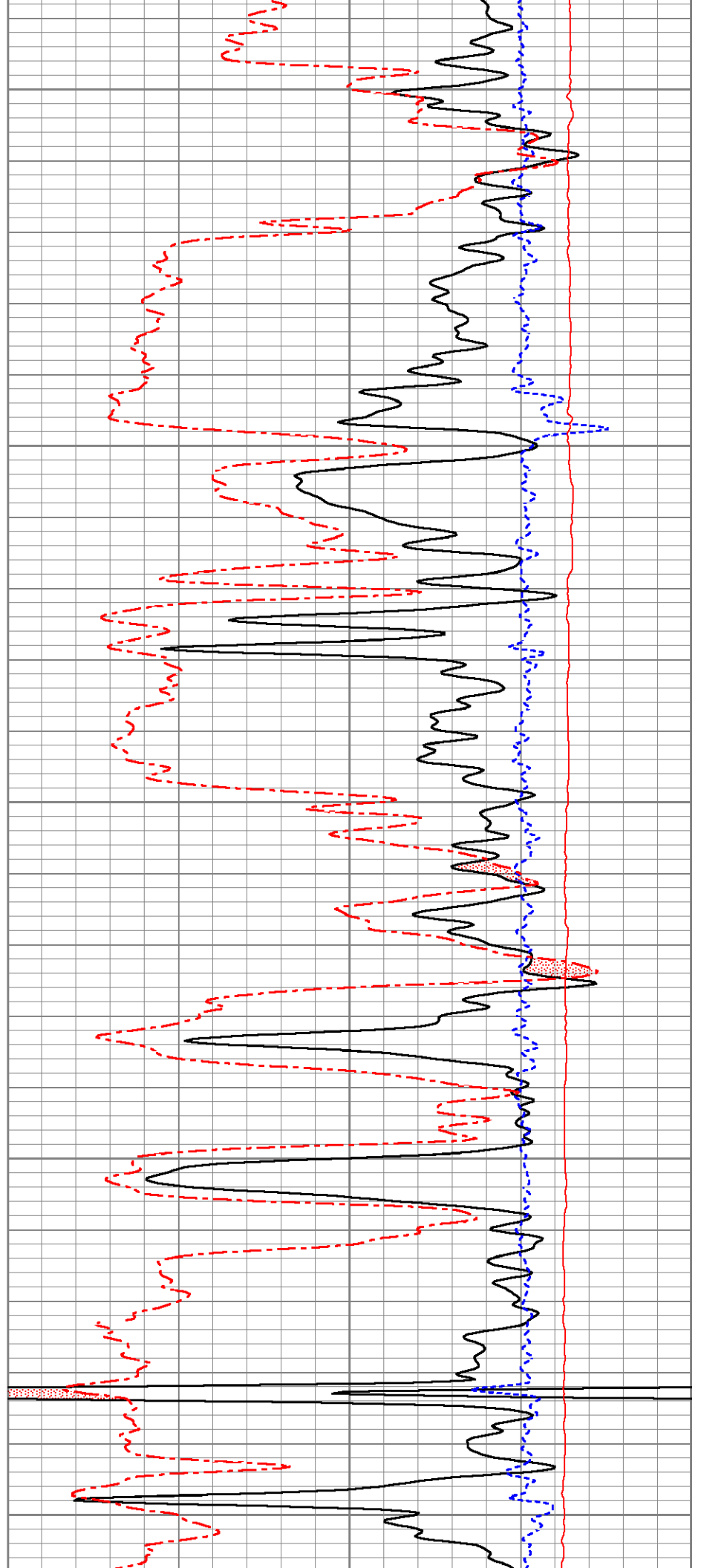
2300

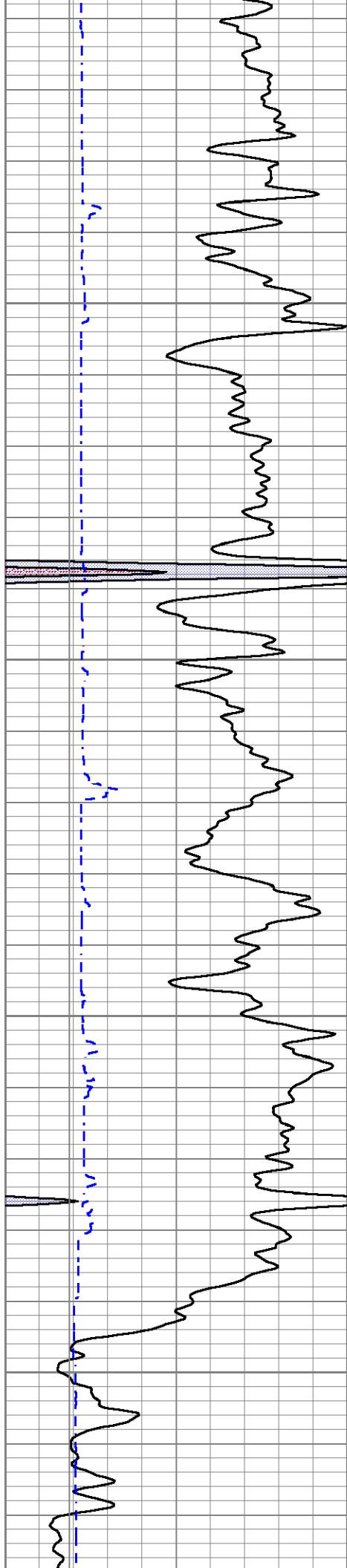
2350

2400

2450

2500



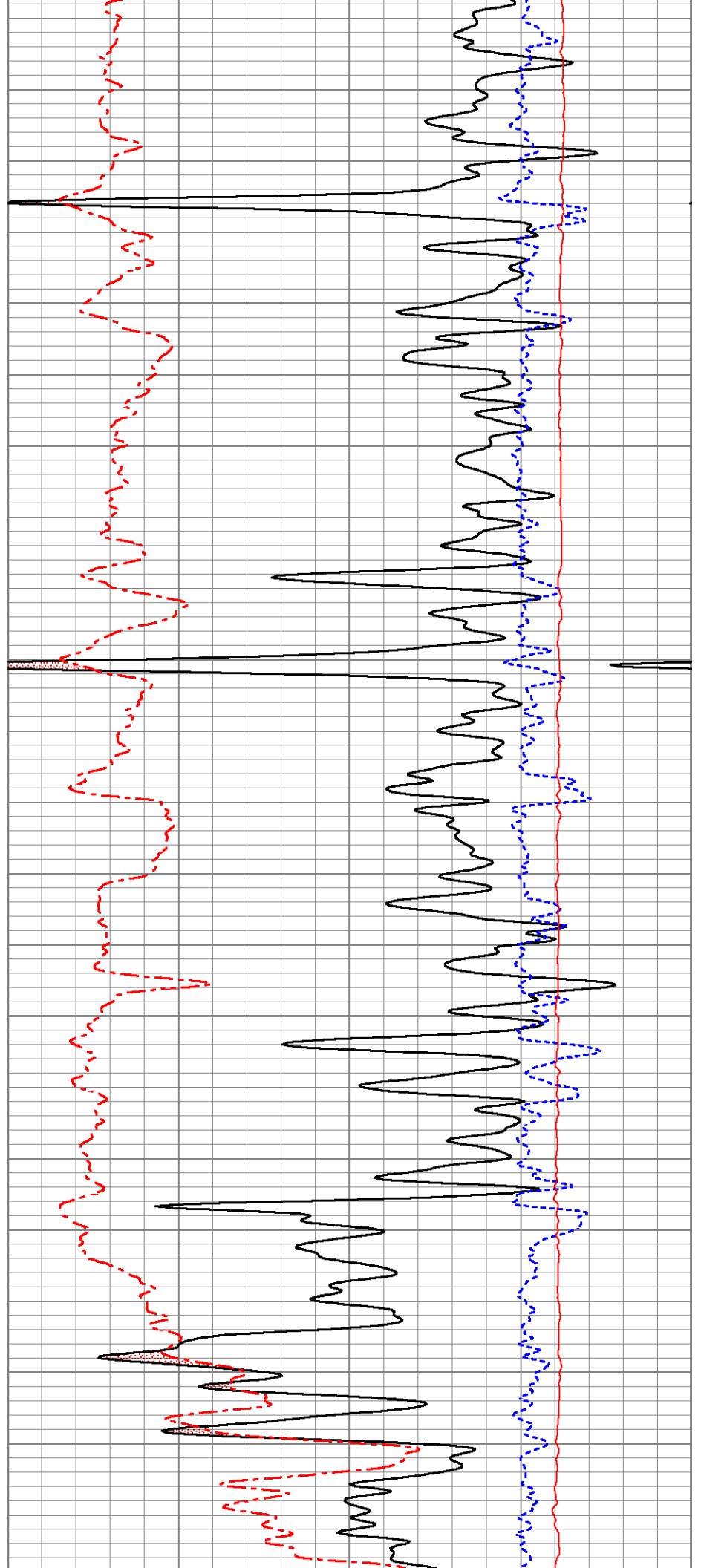


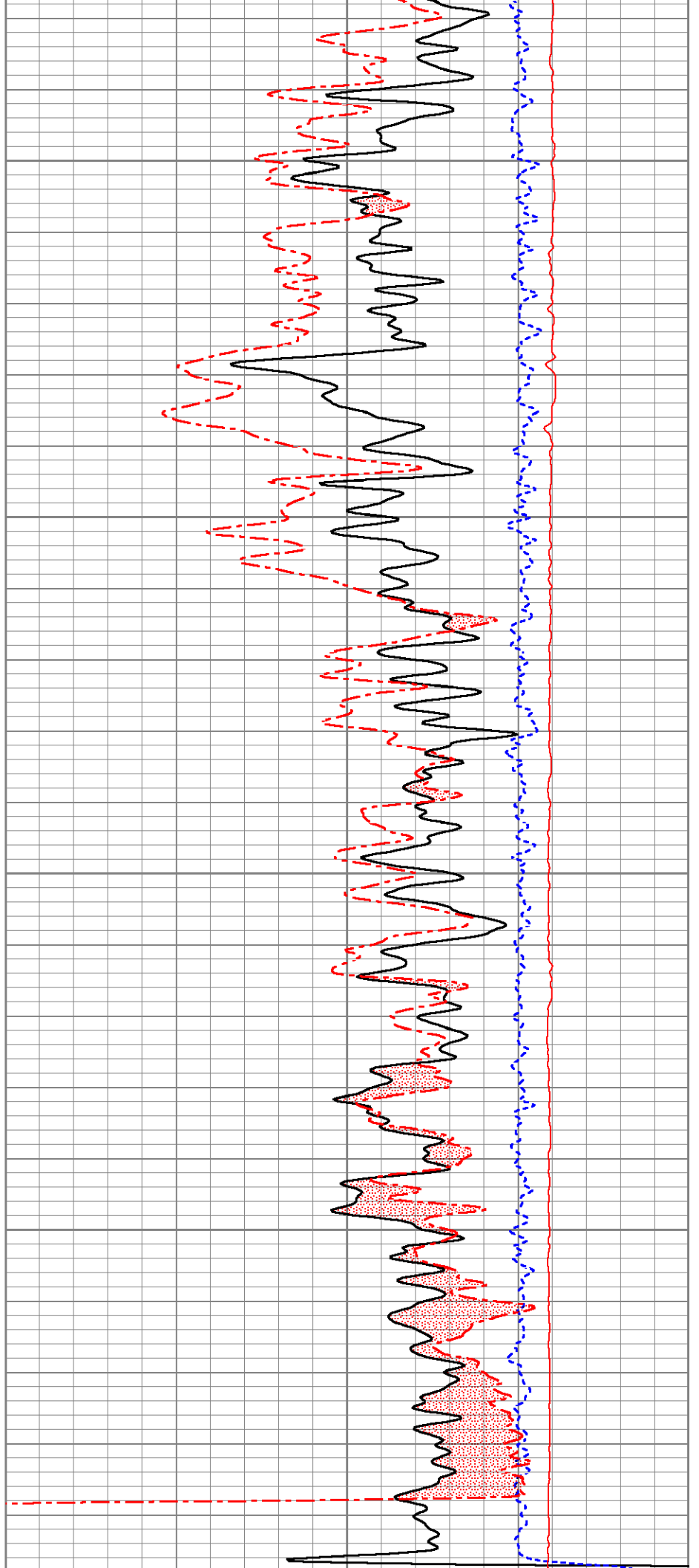
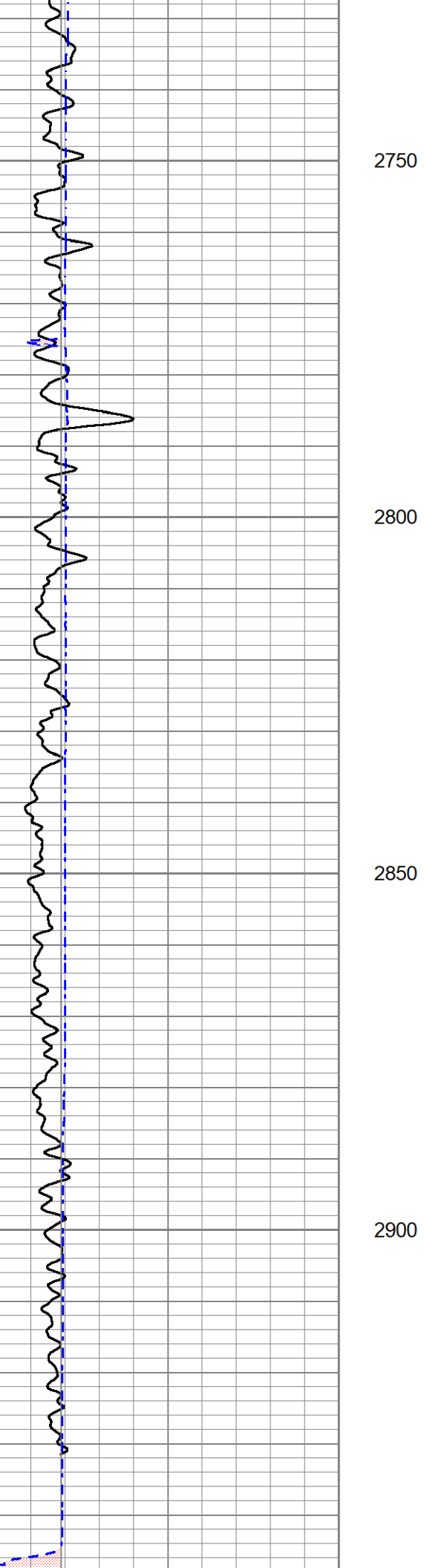
2550

2600

2650

2700





0	Gamma Ray (GAPI)	150
6	Bit size (in)	16
6	Density Caliper (in)	16

2050

30	Density Porosity (pu)	-10
30	Neutron Porosity (pu)	-10
-0.5	Correction (g/cc)	0.5
3000	Line Tension (lb)	500



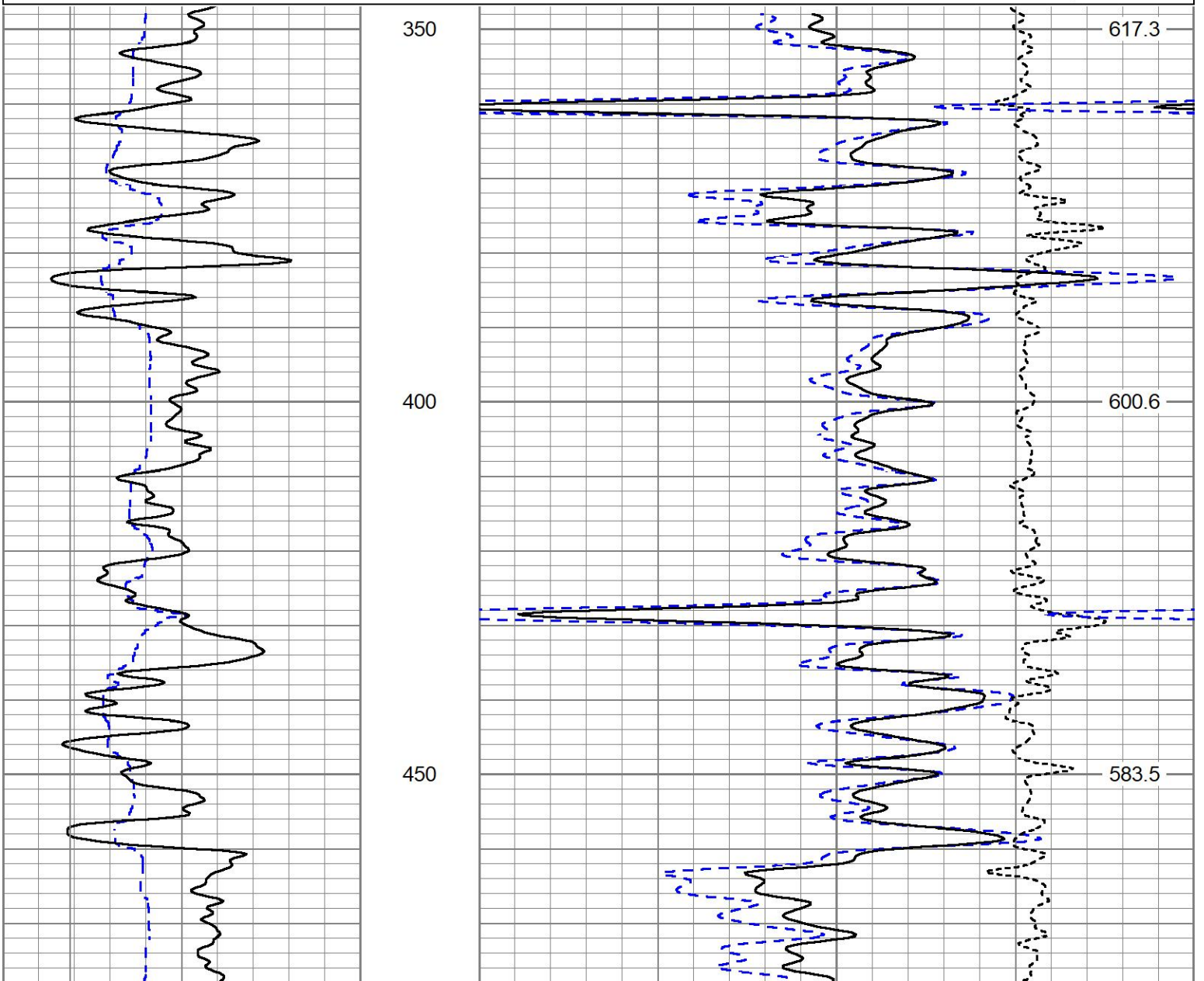
5" COMPENSATED DENSITY

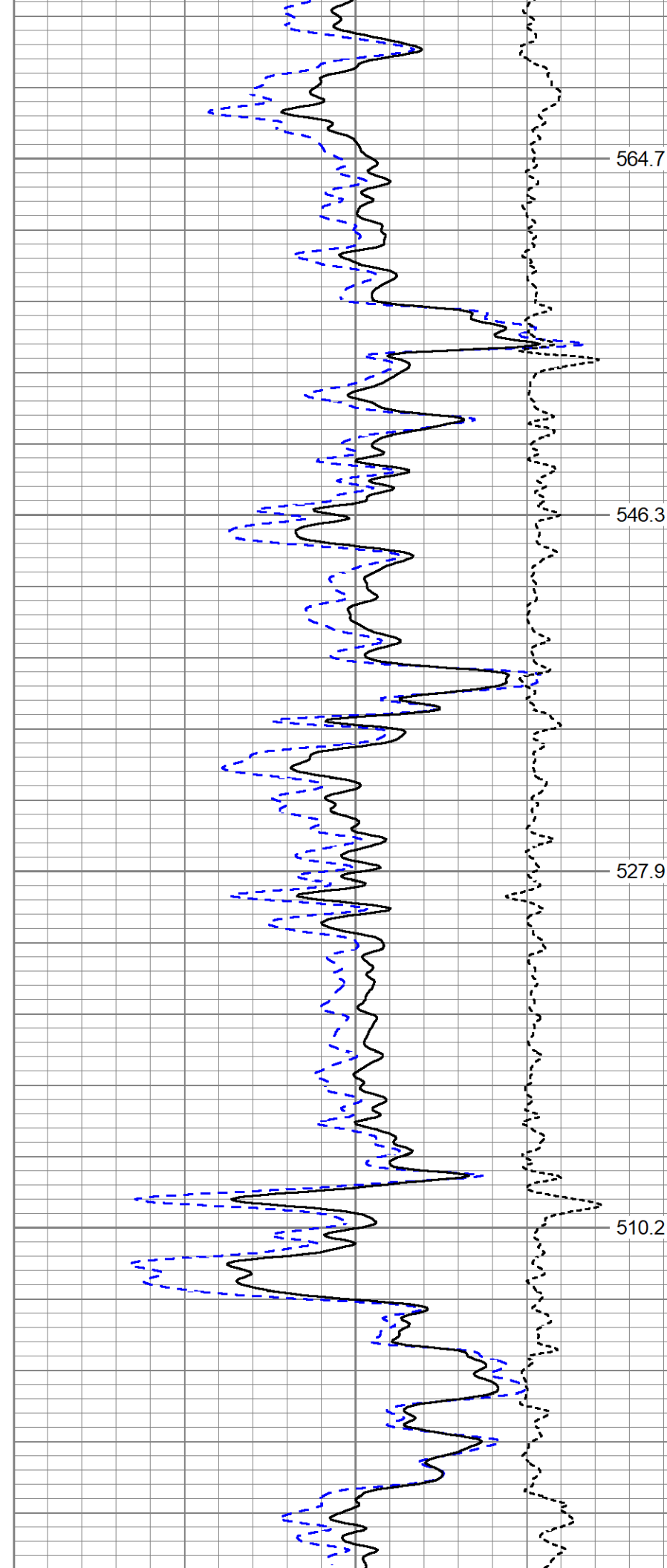
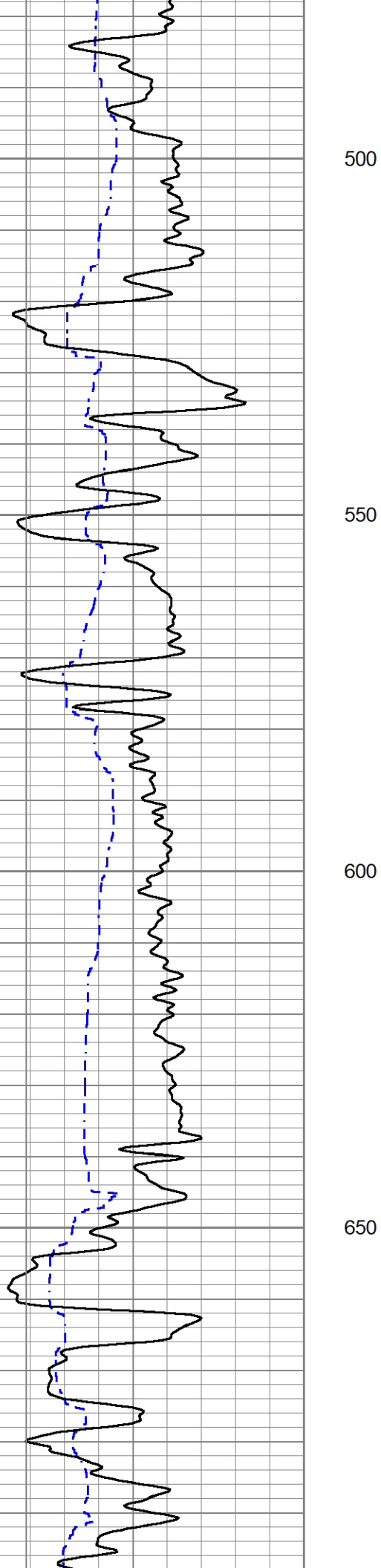
Database File ow2-8993 clapp oil.db
 Dataset Pathname pass1.2
 Presentation Format mmcdl5
 Dataset Creation Mon Oct 18 23:00:47 2021
 Charted by Depth in Feet scaled 1:240

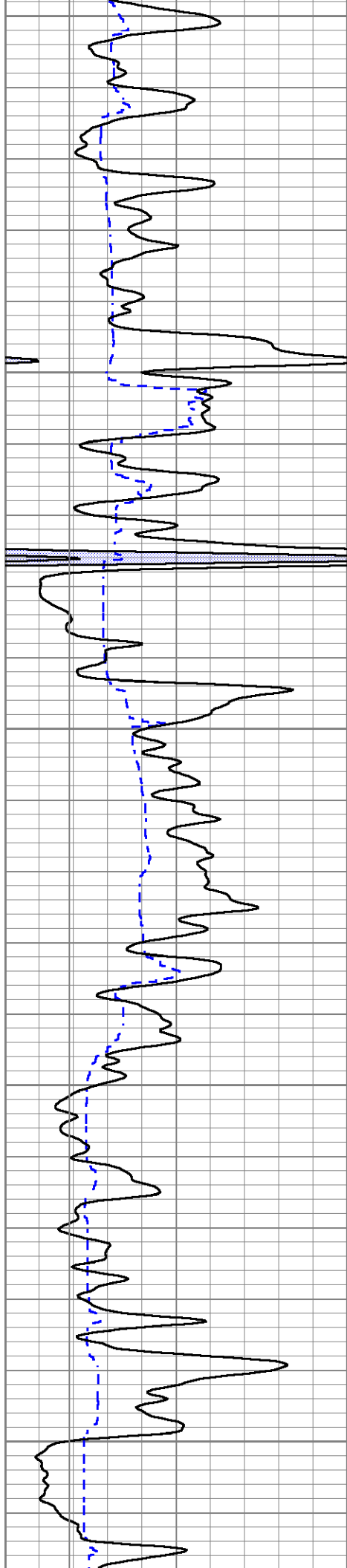
6	Density Caliper (in)	16
0	Gamma Ray (GAPI)	150
6	Bit Size (in)	16

30	Density Porosity (pu)	-10
2	Bulk Density (g/cc)	3
-0.5	Correction (g/cc)	0.5

ABHV (ft3)







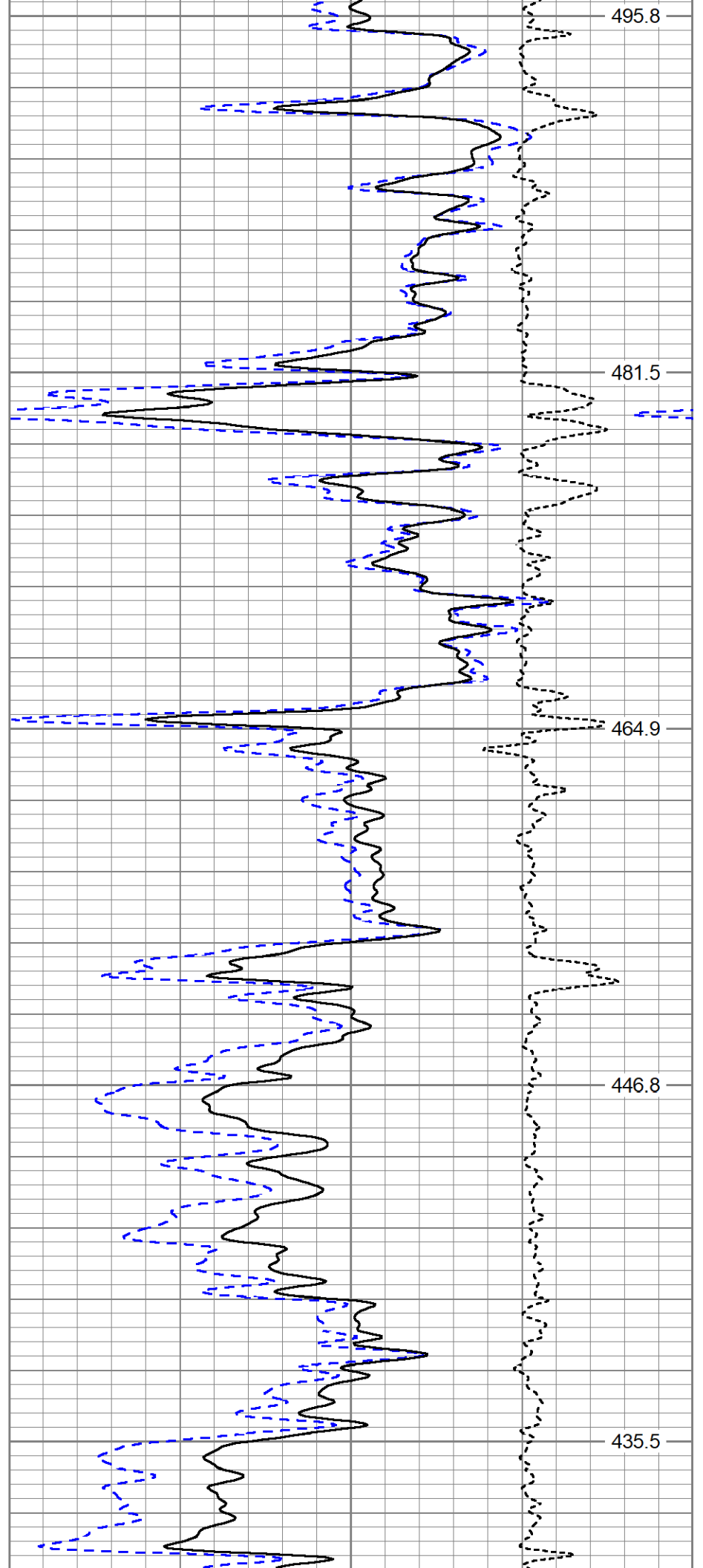
700

750

800

850

900



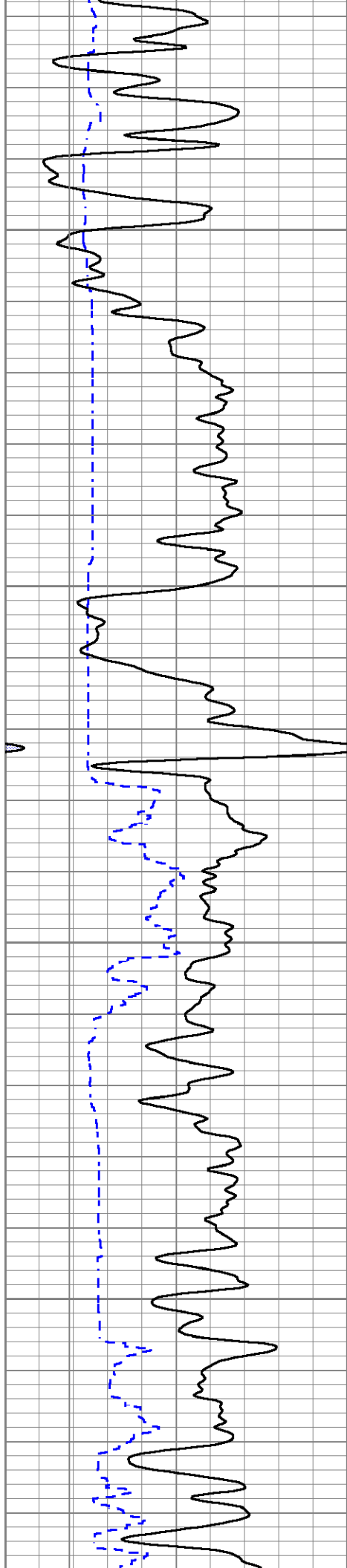
495.8

481.5

464.9

446.8

435.5

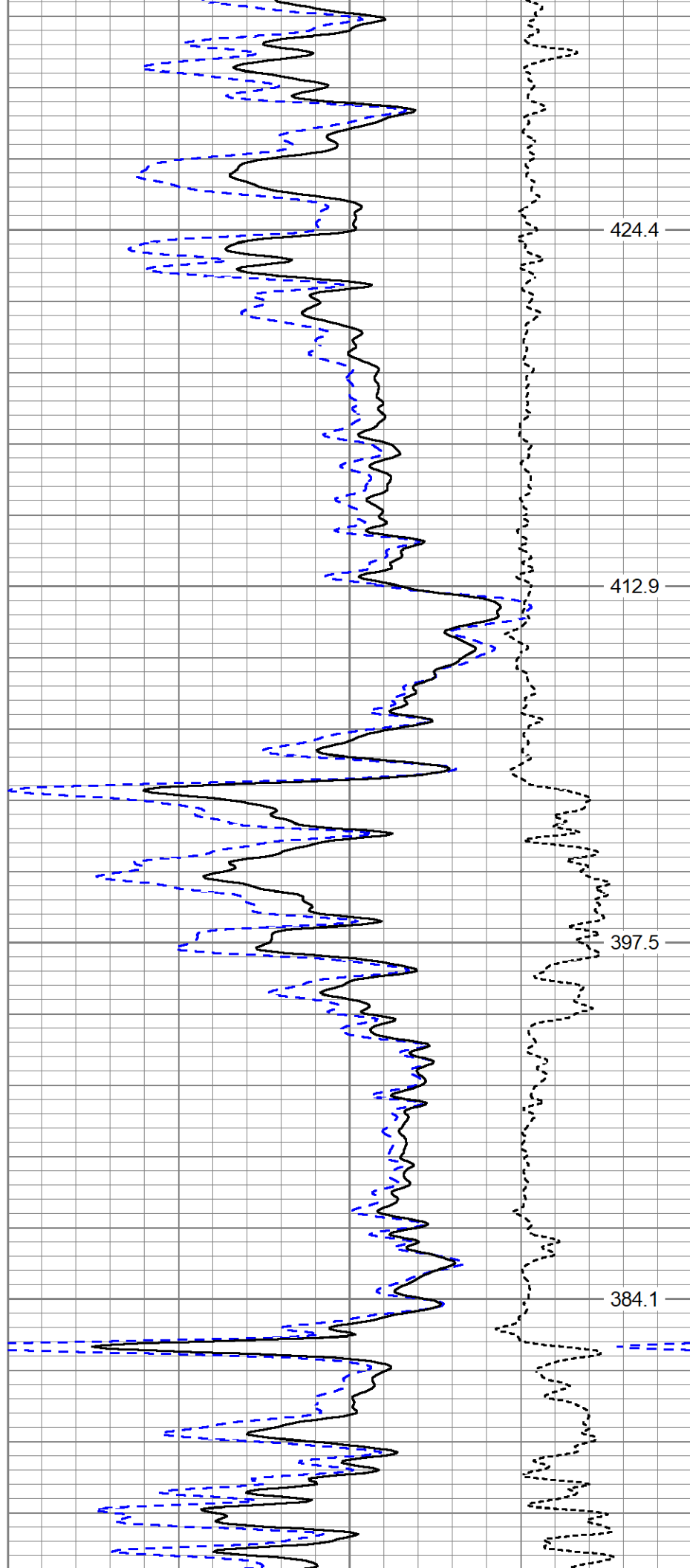


950

1000

1050

1100

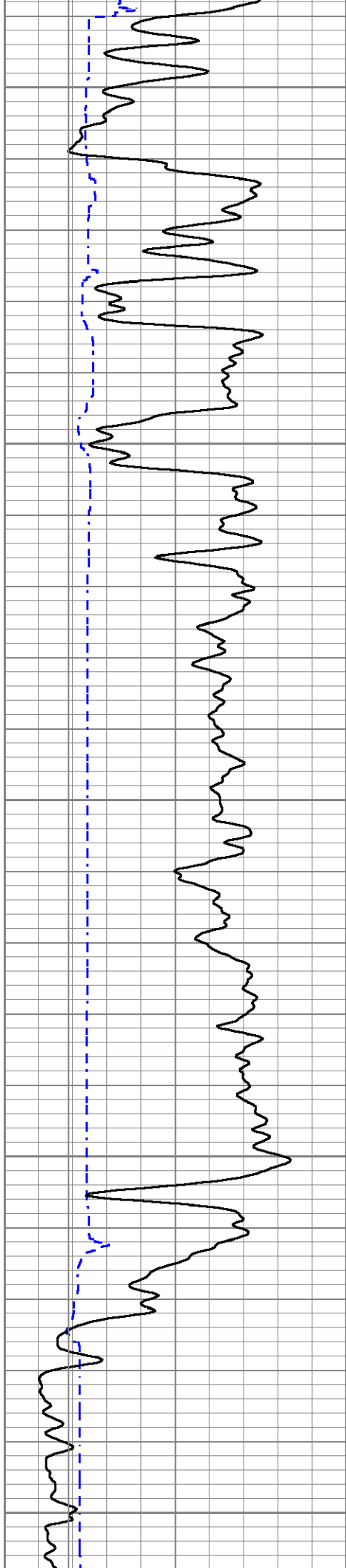


424.4

412.9

397.5

384.1



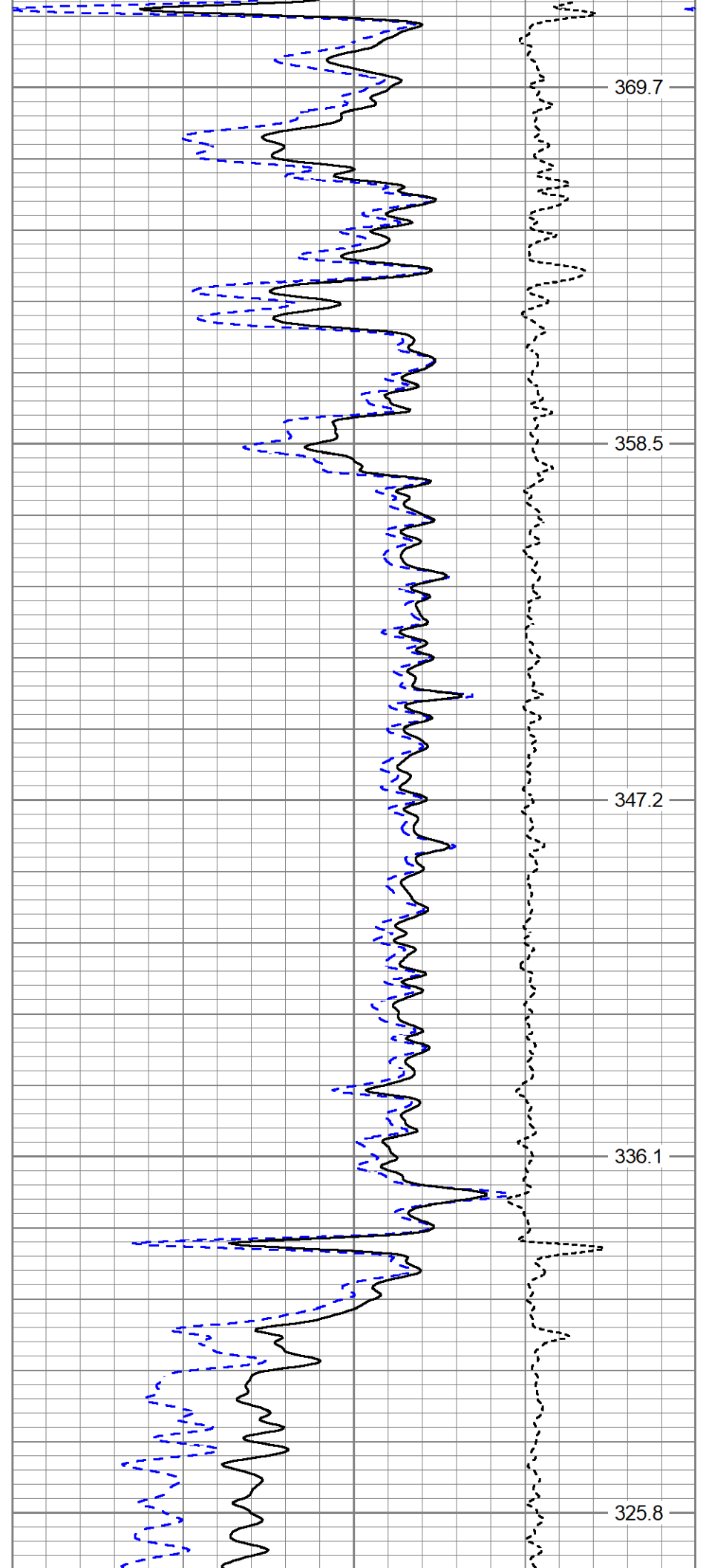
1150

1200

1250

1300

1350



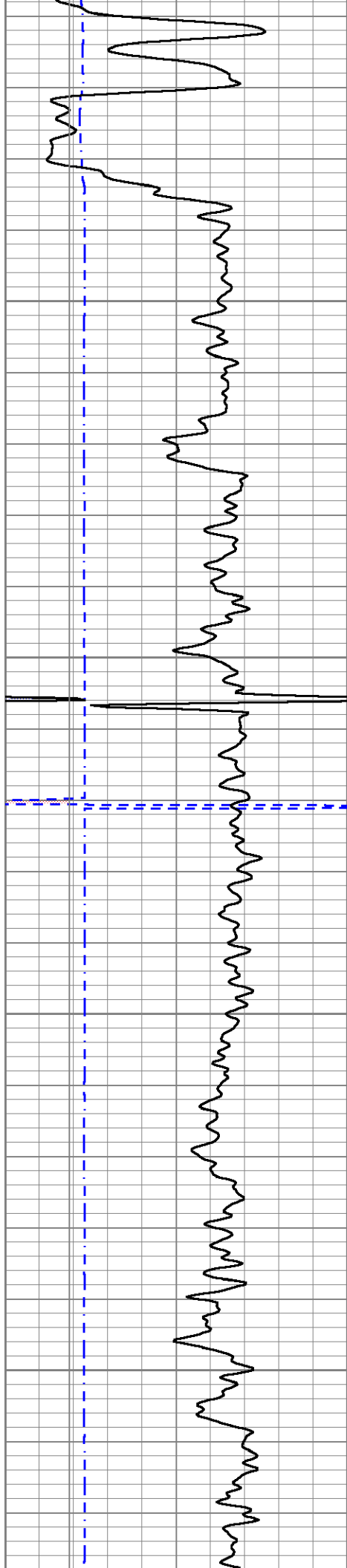
369.7

358.5

347.2

336.1

325.8

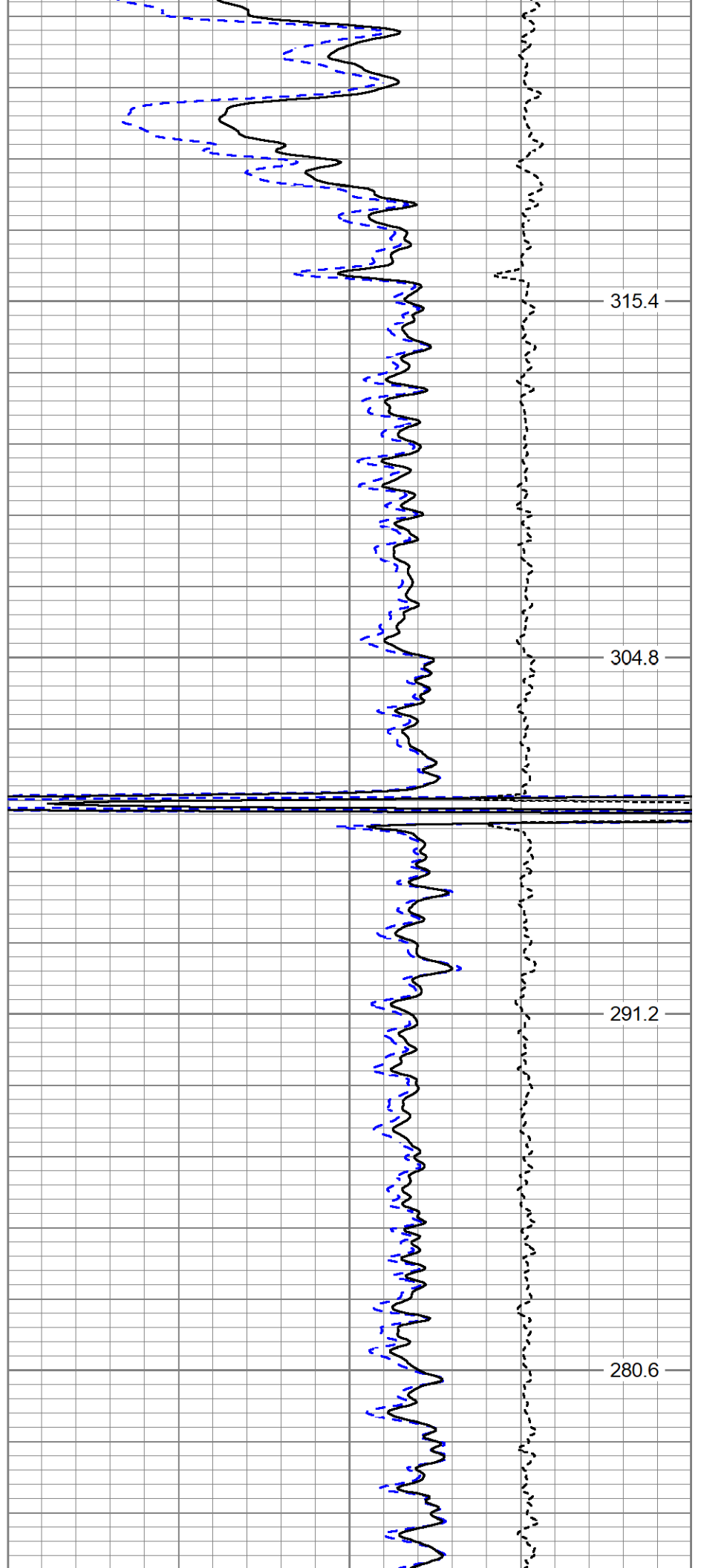


1400

1450

1500

1550

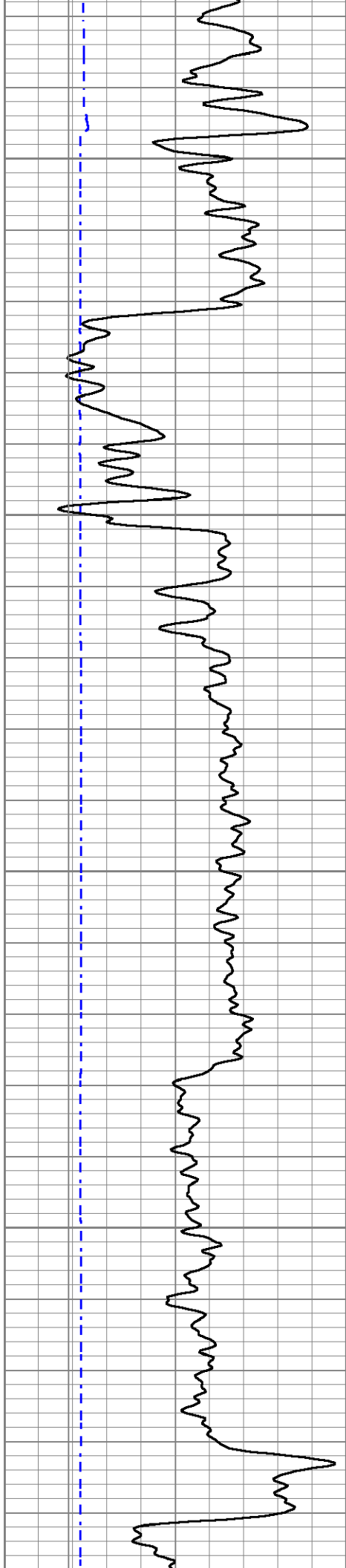


315.4

304.8

291.2

280.6

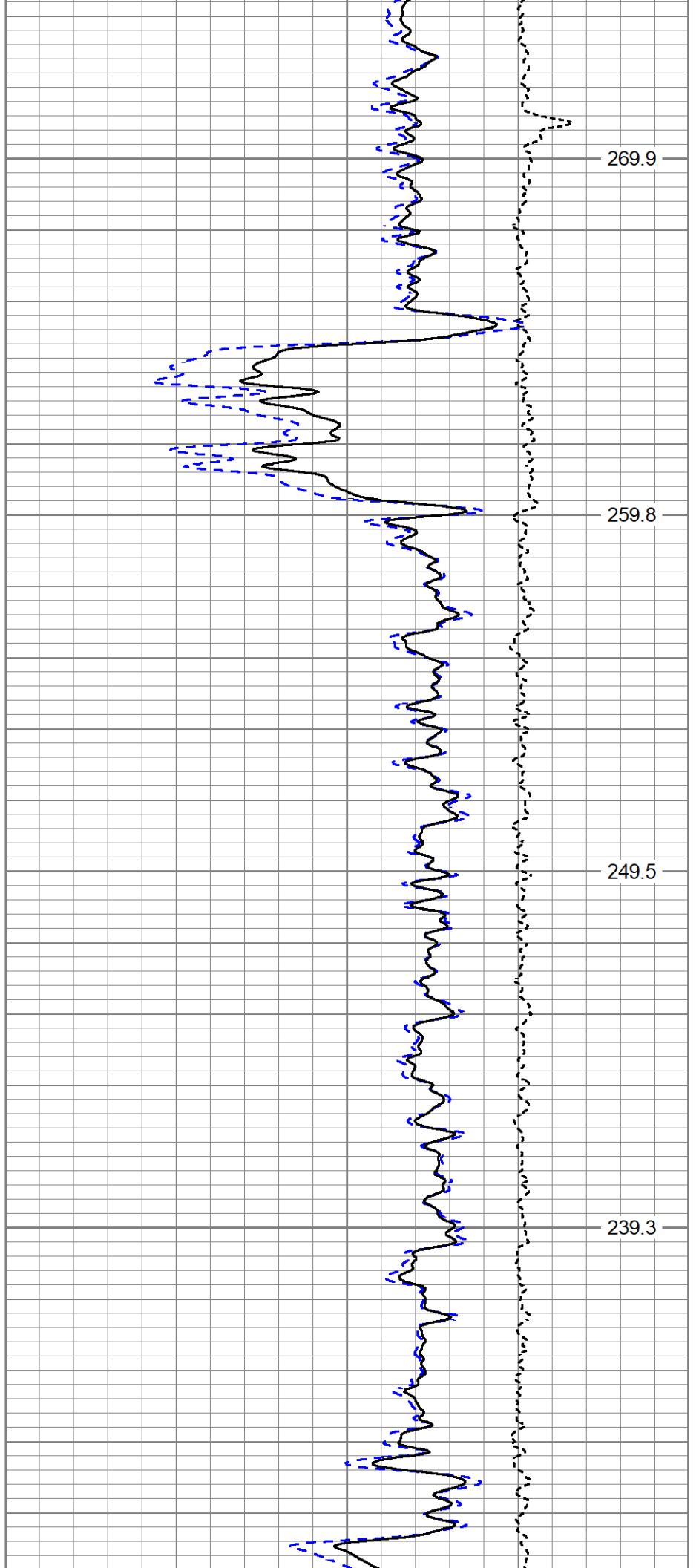


1600

1650

1700

1750

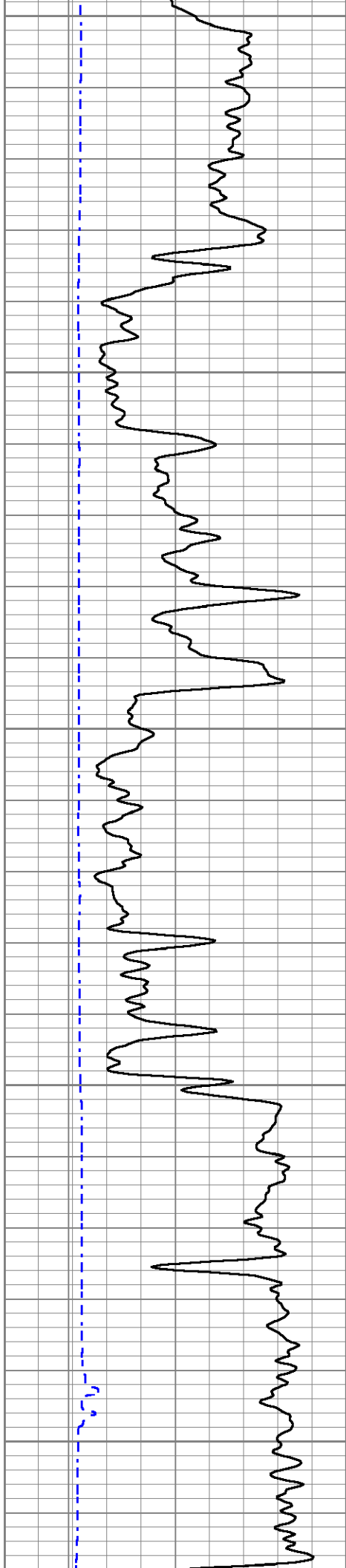


269.9

259.8

249.5

239.3



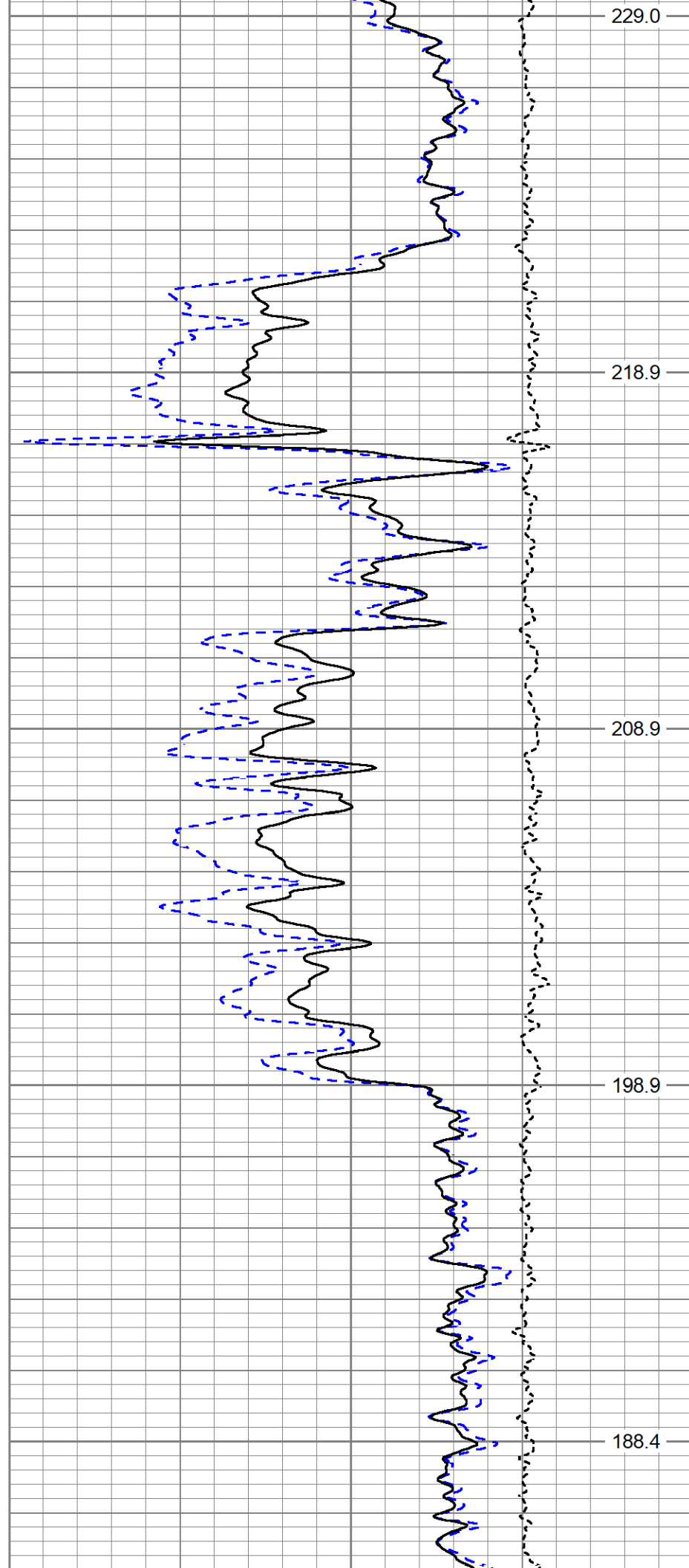
1800

1850

1900

1950

2000



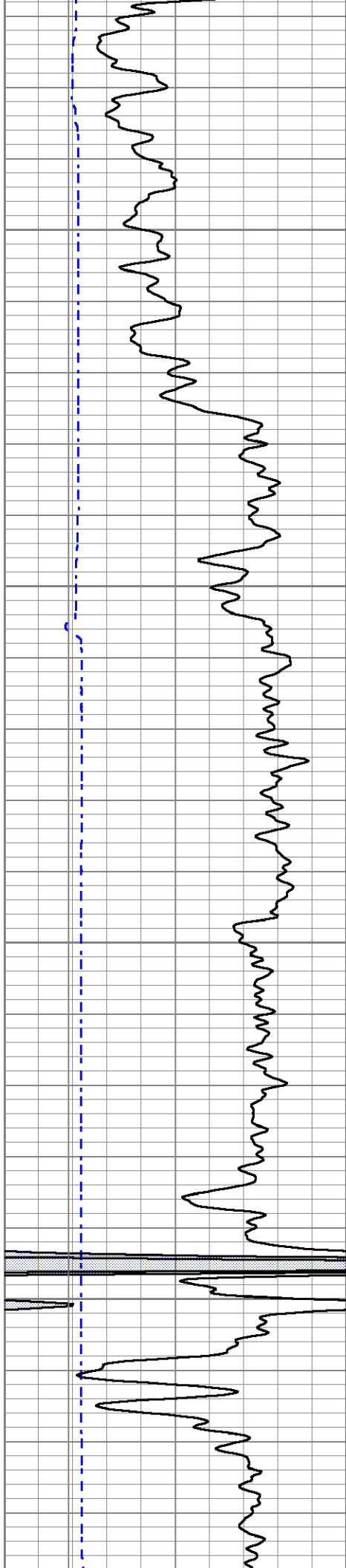
229.0

218.9

208.9

198.9

188.4

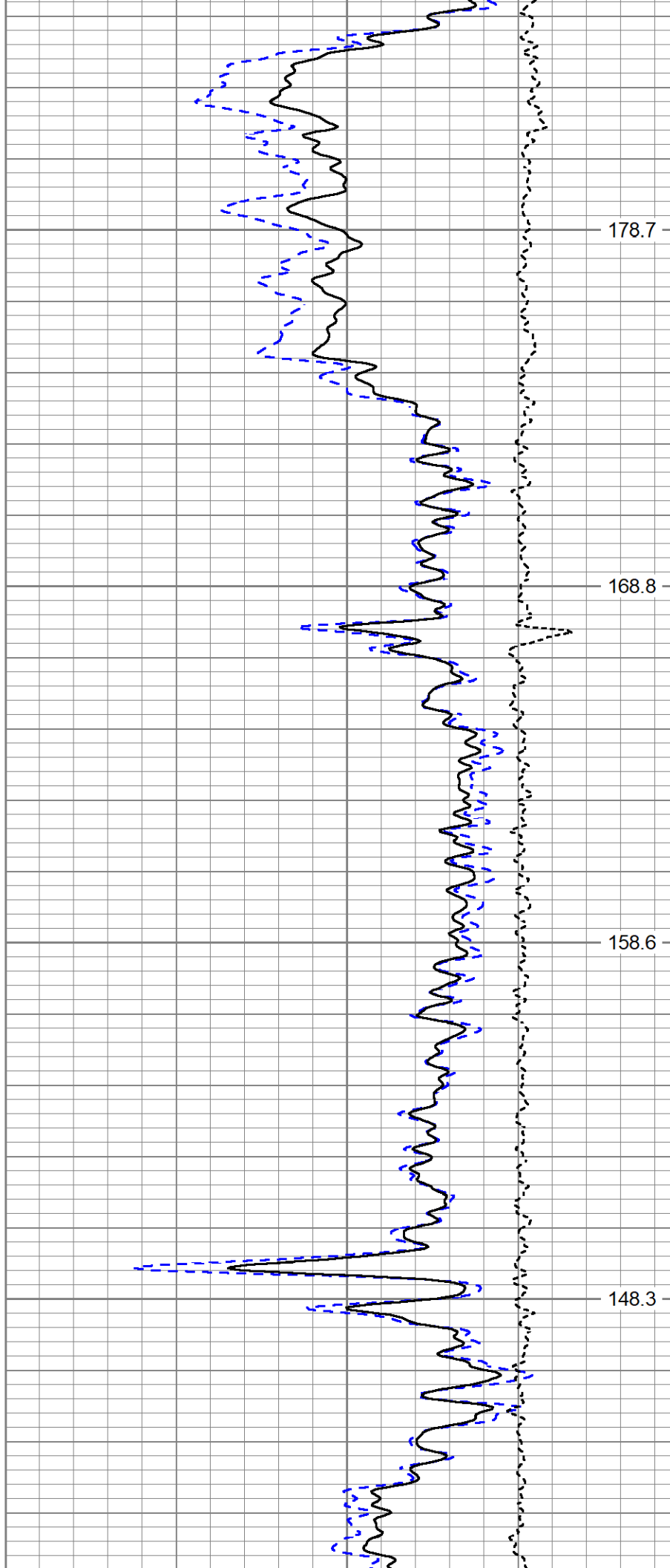


2050

2100

2150

2200

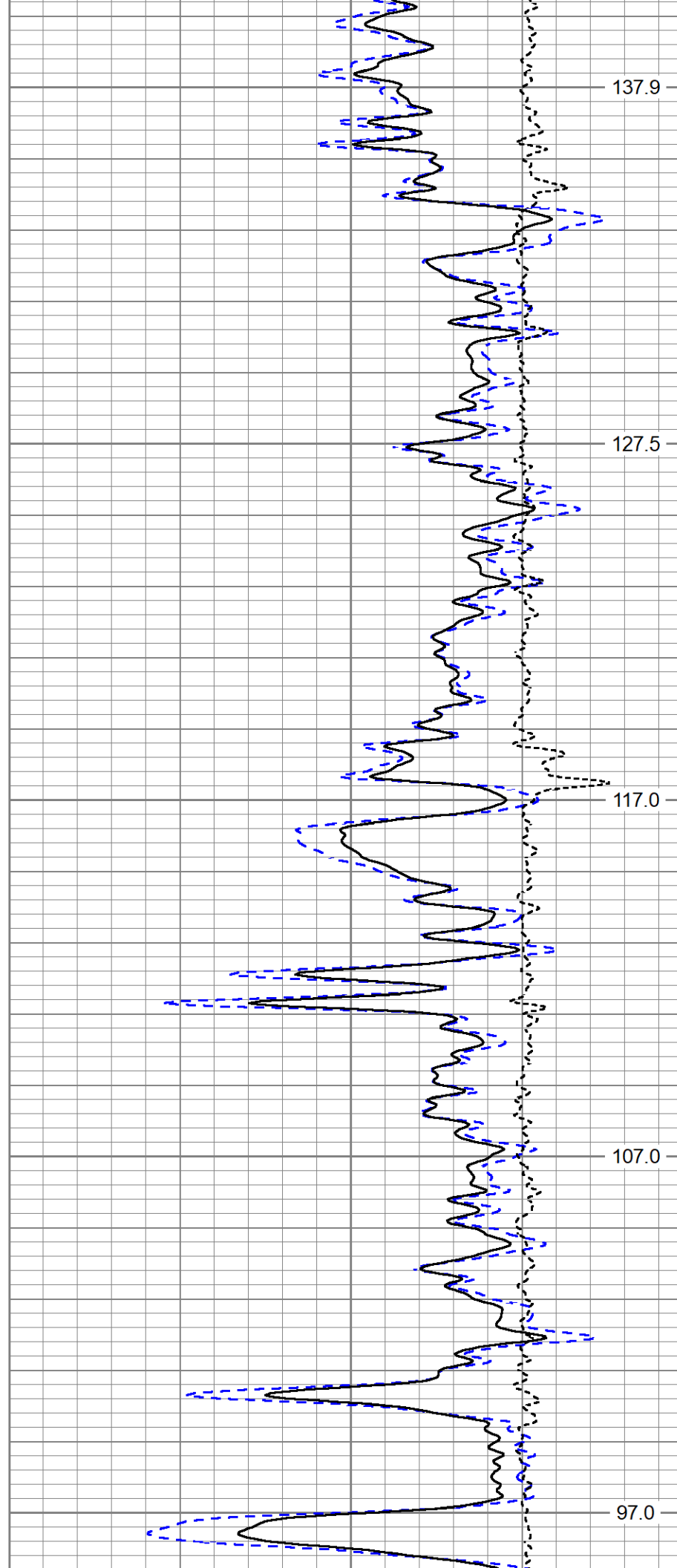
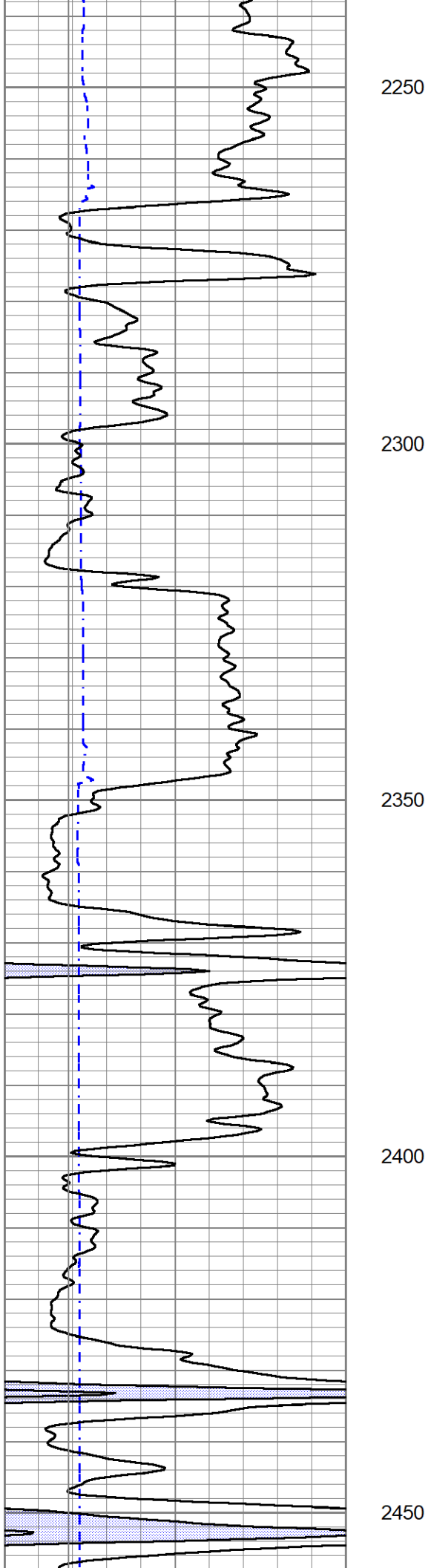


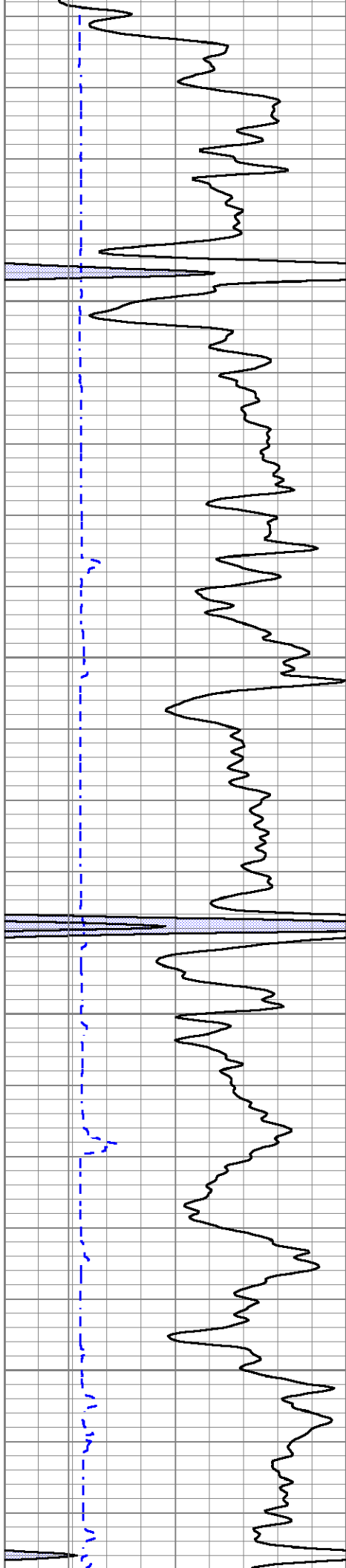
178.7

168.8

158.6

148.3



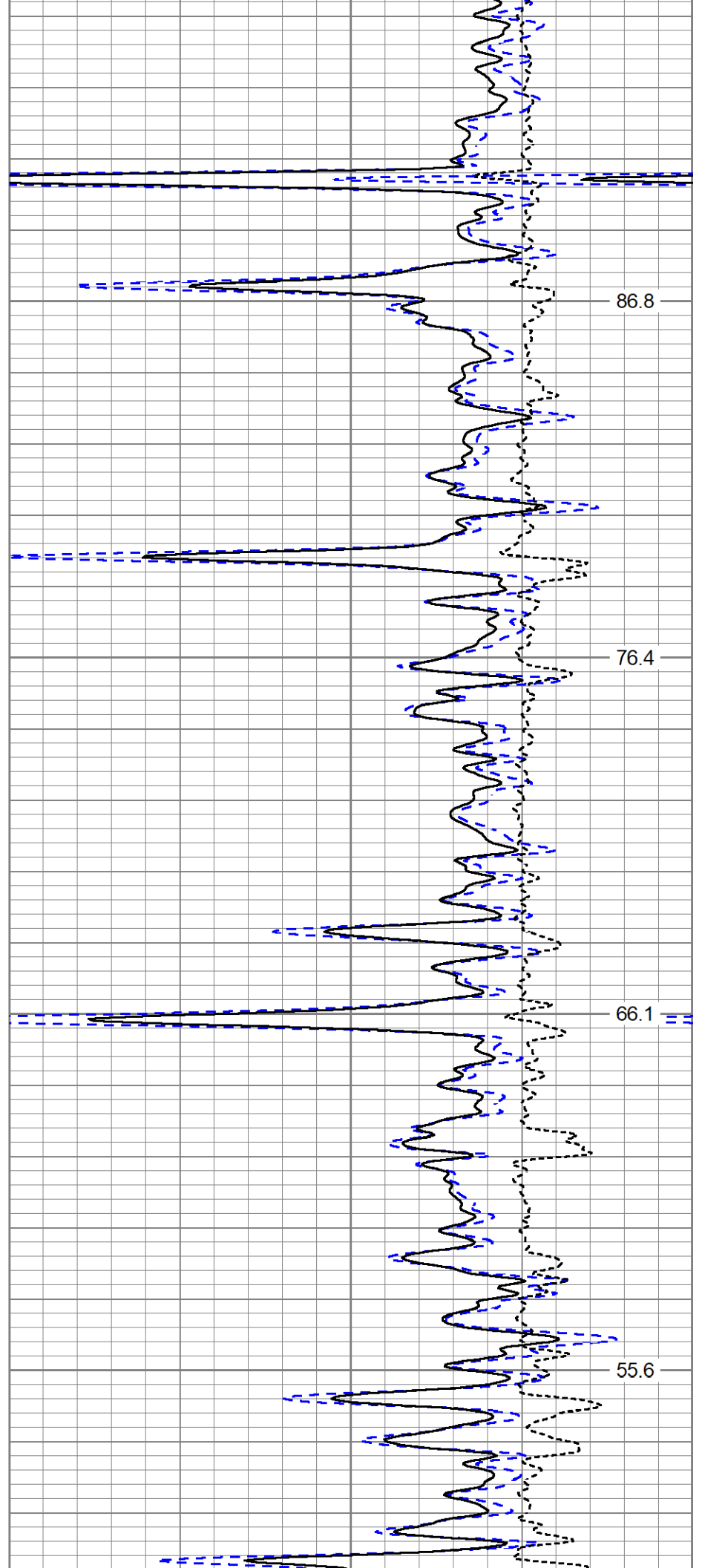


2500

2550

2600

2650

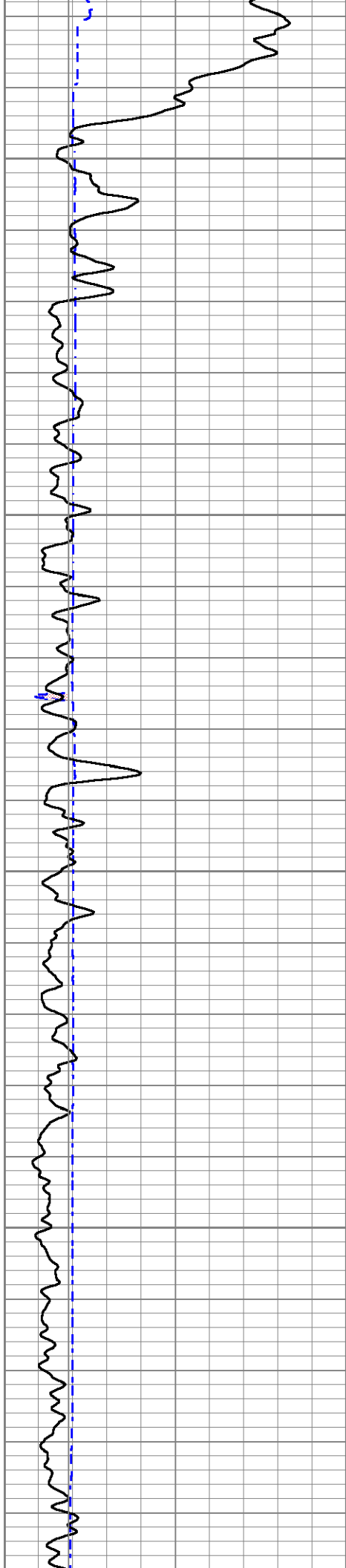


86.8

76.4

66.1

55.6

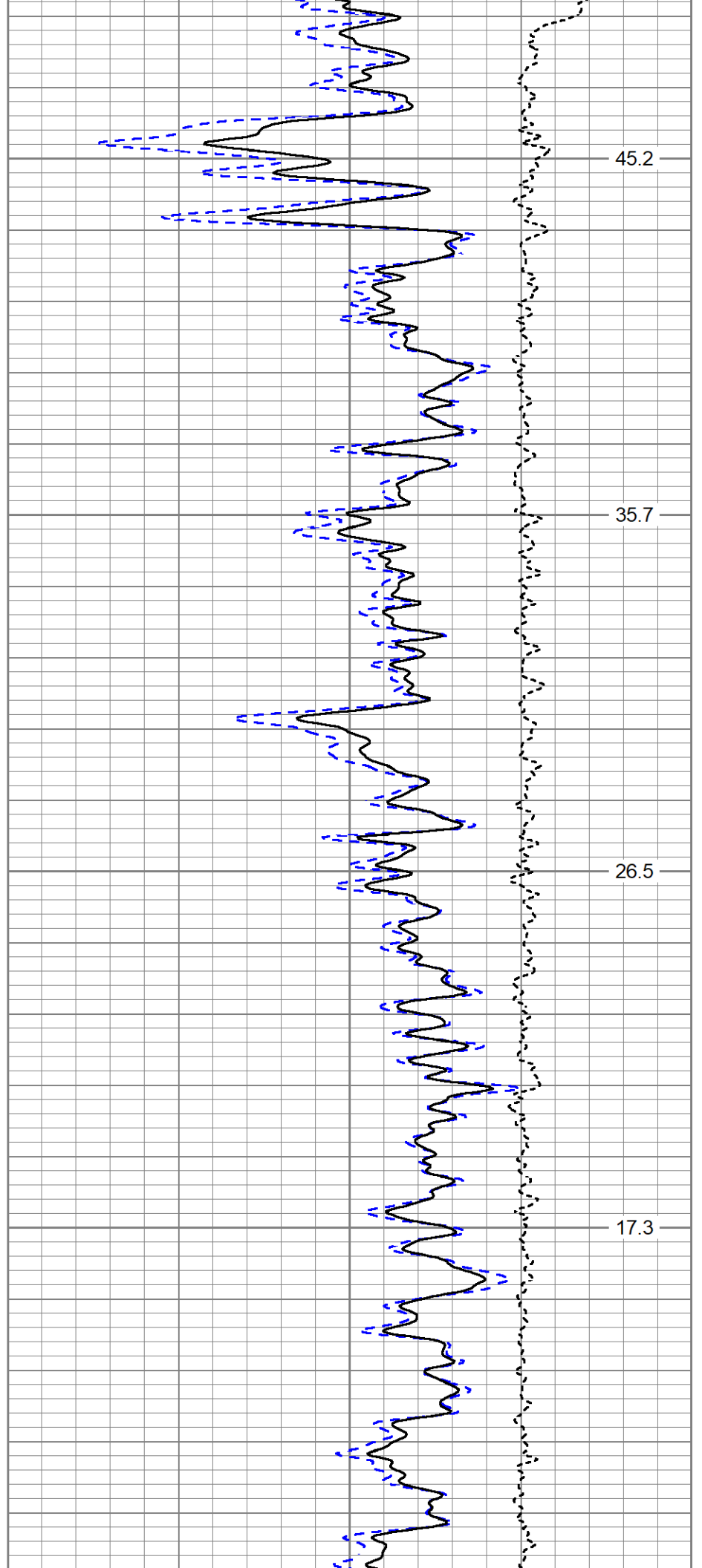


2700

2750

2800

2850

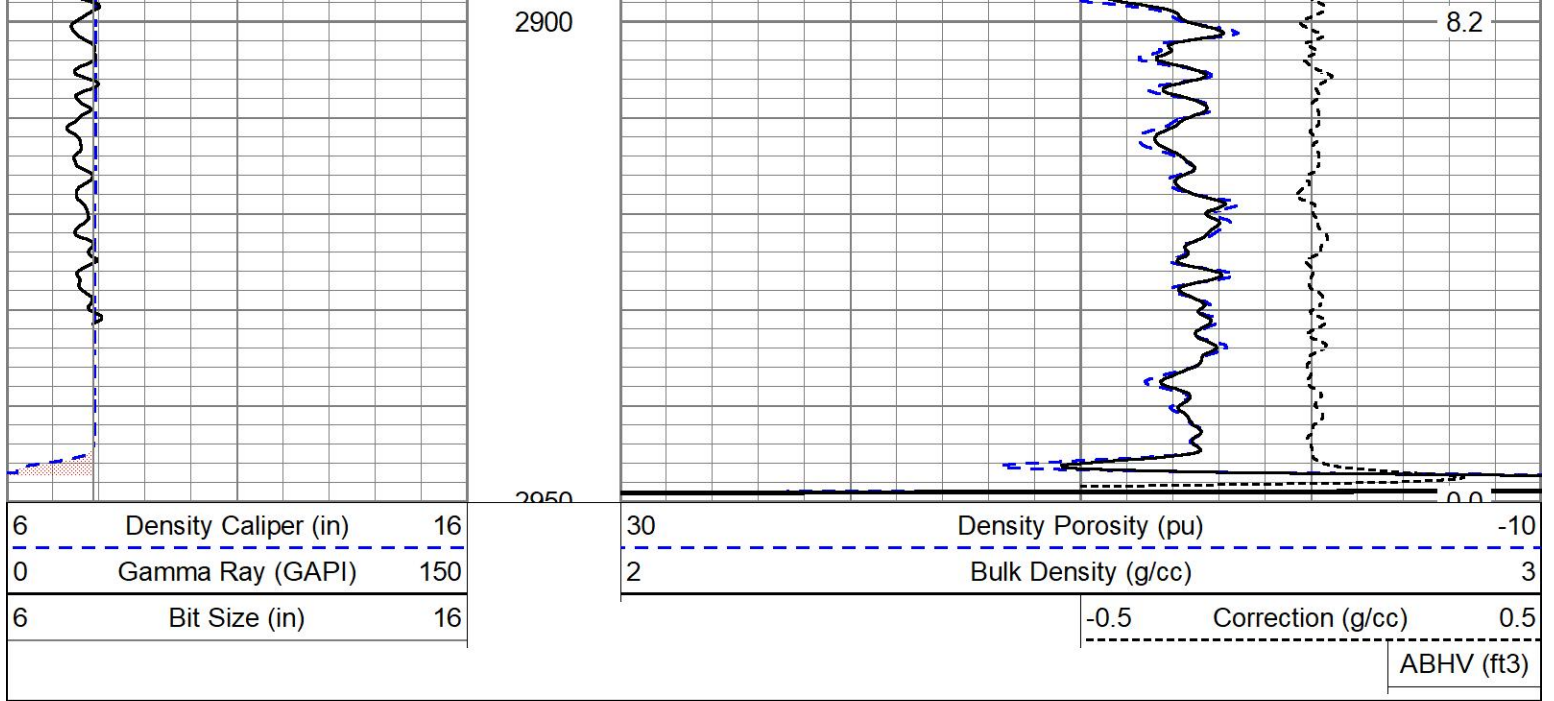


45.2

35.7

26.5

17.3



Sensor	Offset (ft)	Schematic	Description	Length (ft)	O.D. (in)	Weight (lb)
ACCY	17.83		ADMYR_TELEMETRY-OSAGE_01 (Refurb01) Admyr Telemetry With Gr, Deviation, ADC board and Pulses Board in it.	3.69	3.25	53.00
ACCX	17.83					
GR	16.65					
FRAMES	15.33					
SSTAT	15.33		NEU-ADDON (ADMYR1) Inline Neutron	5.65	3.38	84.00
PSTAT	15.33					
ASTAT	15.33					
NEU	11.66					
DCAL	2.79		ADT1LITH-C: Digital Density (1C)	9.69	0.00	
LSD	2.54					
SSD	1.96					
PSTAT2	0.00					
TR_Mon	0.00					

Dataset: ow2-8993 clapp oil.db: field/well/run1/pass1
 Total length: 19.02 ft
 Total weight: 137.00 lb
 O.D.: 3.38 in