



MICROLOG

Company CLAPP OIL COMPANY
 Well SMITH # C-1
 Field OLSEN
 County COWLEY
 State KANSAS

Company CLAPP OIL COMPANY
 Well SMITH # C-1
 Field OLSEN
 County COWLEY
 State KANSAS

Location: API #: 15-035-24747-00-00
 SWNE SW/NE
 3390' FSL & 3390' FWL
 SEC 1 TWP 35S RGE 7E
 Permanent Datum GL Elevation 1224
 Log Measured From GL
 Drilling Measured From GL
 Other Services
 ILD
 CDLN
 Elevation
 K.B.
 D.F.
 G.L. 1224

Date	10-18-21
Run Number	ONE
Depth Driller	2952
Depth Logger	2950
Bottom Logged Interval	2947
Top Log Interval	350
Casing Driller	8.625" @ 325'
Casing Logger	8.625" @ 325'
Bit Size	7.875"
Type Fluid in Hole	CHEMICAL
Density / Viscosity	9.2 / 55
pH / Fluid Loss	9.5 / 8.0
Source of Sample	PIT
Rm @ Meas. Temp	3.3 @ 80
Rmf @ Meas. Temp	2.6 @ 80
Rmc @ Meas. Temp	3.8 @ 80
Source of Rmf / Rmc	CAL
Rm @ BHT	2.3 @ 117
Time Circulation Stopped	7:00 PM
Time Logger on Bottom	10:00 PM
Maximum Recorded Temperature	117
Equipment Number	OW2
Location	HOMINY, OK
Recorded By	MACKEY
Witnessed By	MR. CLAPP
	KIDD
	MR. WALLER
	TAFT
	MR. WOLFE

<<< Fold Here >>>

All interpretations are opinions based on inferences from electrical or other measurements and we cannot and do not guarantee the accuracy or correctness of any interpretation, and we shall not, except in the case of gross or willful negligence on our part, be liable or responsible for any loss, costs, damages, or expenses incurred or sustained by anyone resulting from any interpretation made by any of our officers, agents or employees. These interpretations are also subject to our general terms and conditions set out in our current Price Schedule.

Comments

FILE # OW2-8993 CLAPP OIL
 THANK YOU FOR USING OSAGE WIRELINE

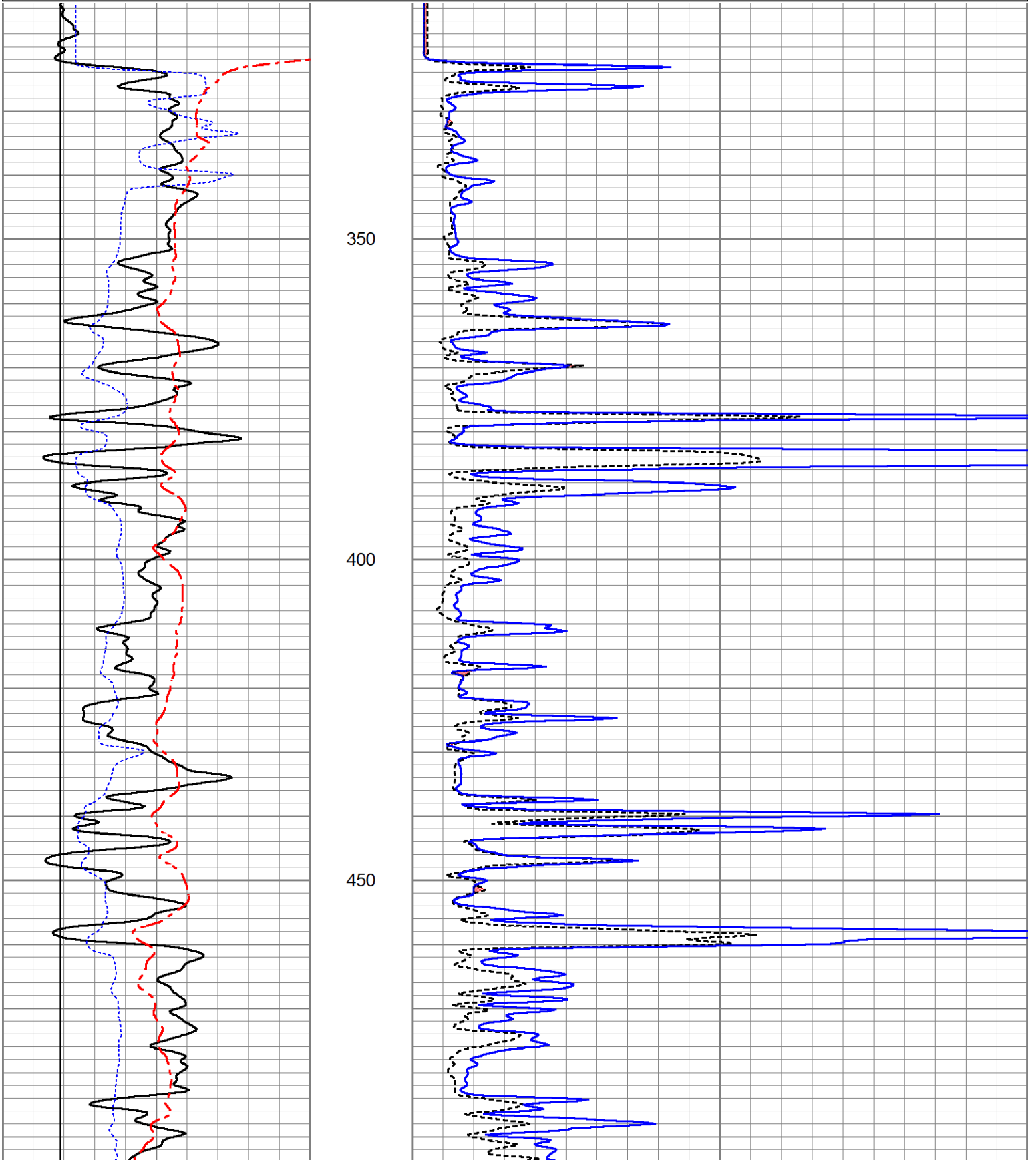


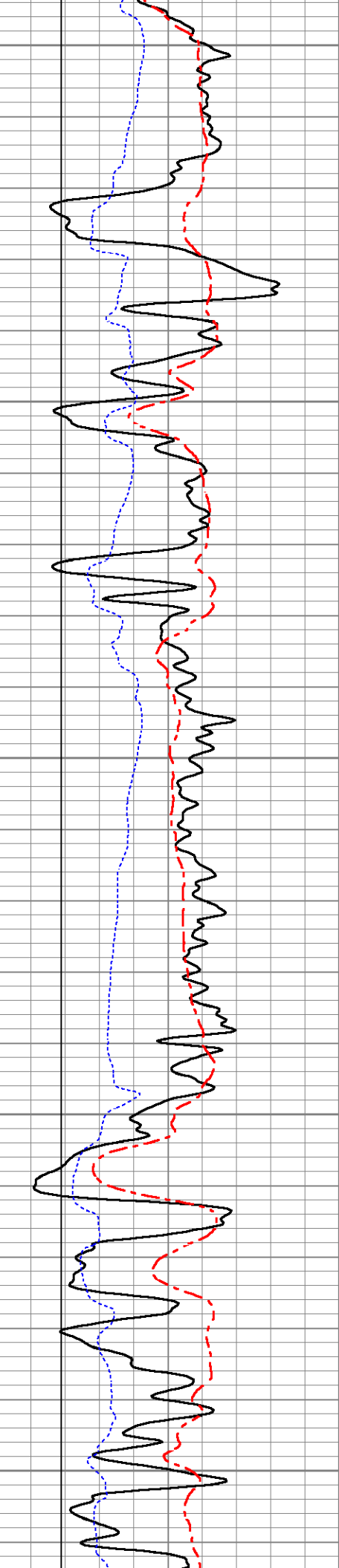
5" MICROLOG

Database File ow2-8993 clapp oil.db
 Dataset Pathname pass2.3
 Presentation Format mmdigitalmicro
 Dataset Creation Tue Oct 19 00:15:59 2021
 Charted by Depth in Feet scaled 1:240

0	Gamma Ray (GAPI)	150
6	Micro Caliper (in)	16
6	Bit Size (in)	16
0	Spontaneous Potential (mV)	180

0	Micro Normal (Ohm-m)	40
0	Micro Inverse (Ohm-m)	40





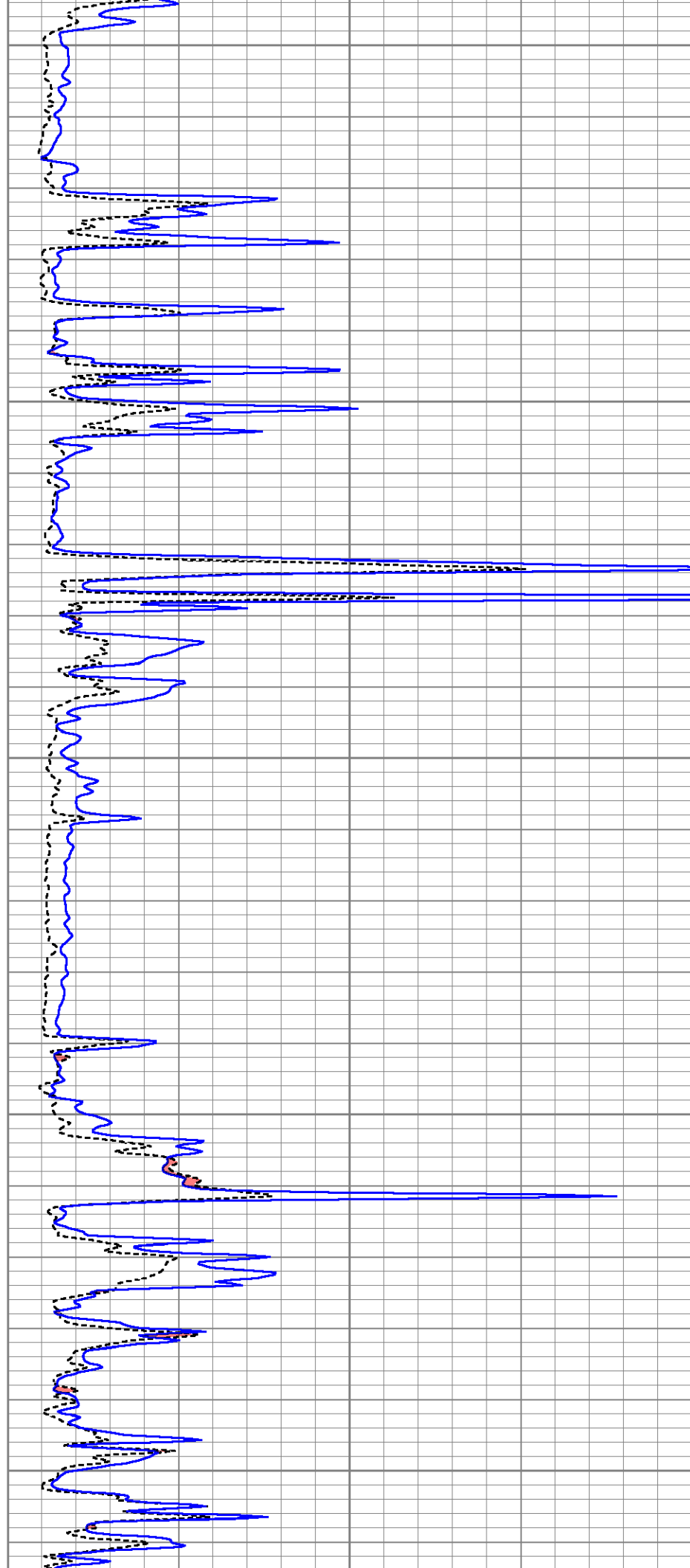
500

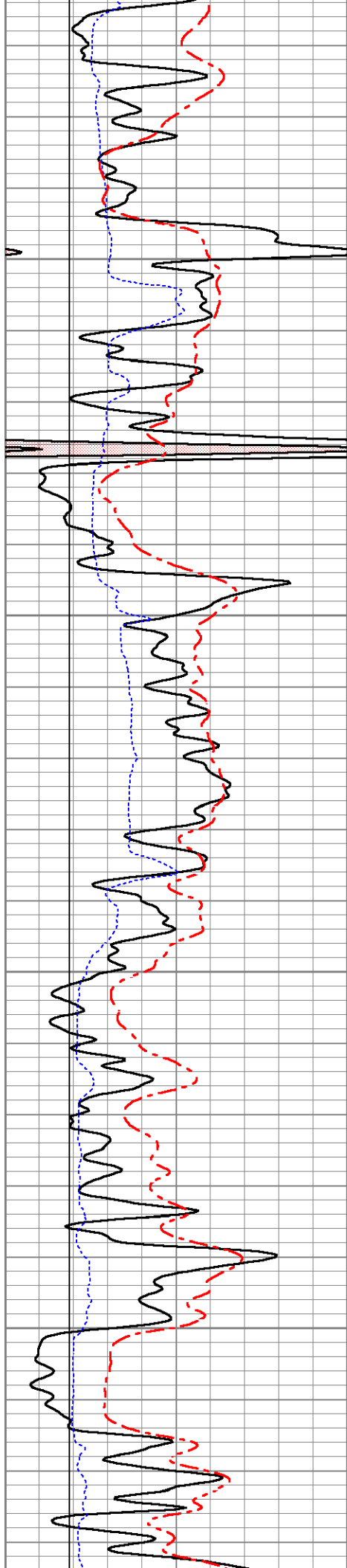
550

600

650

700



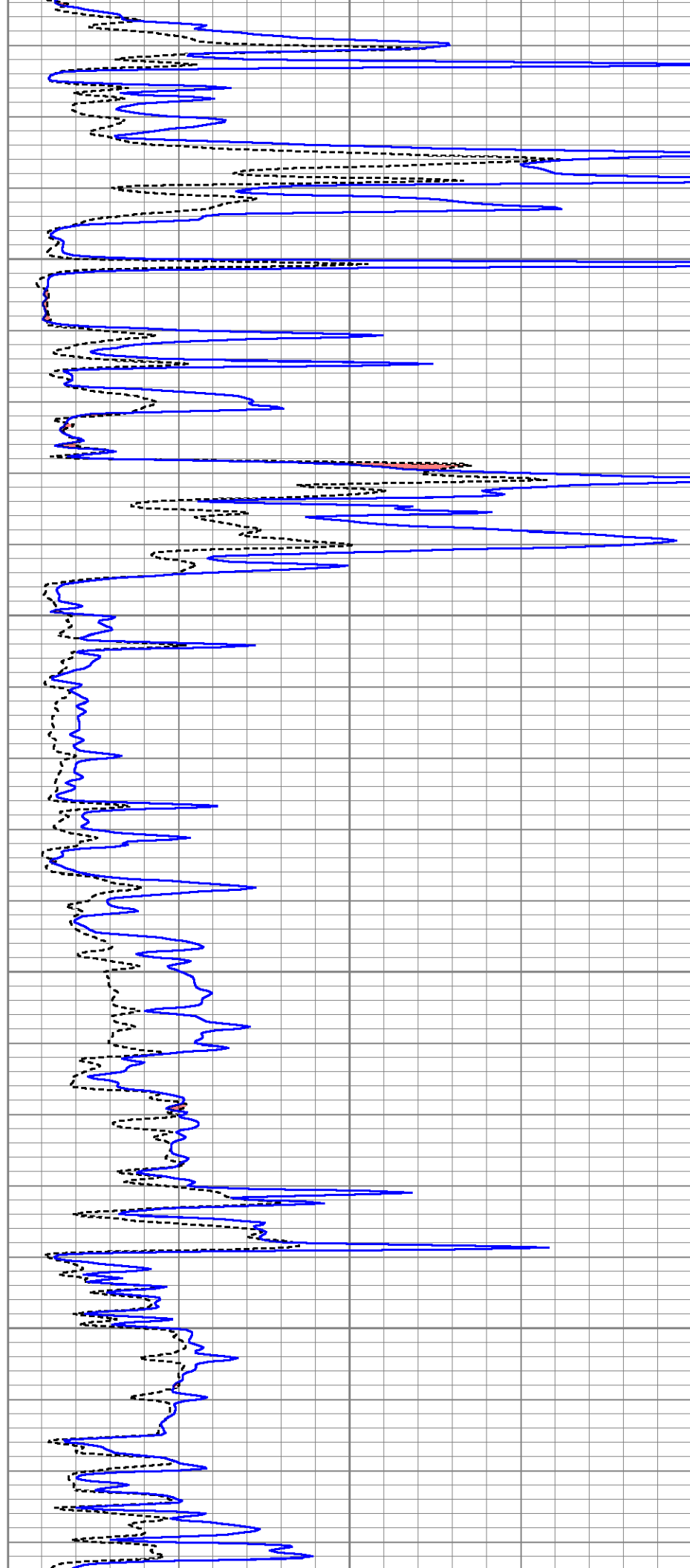


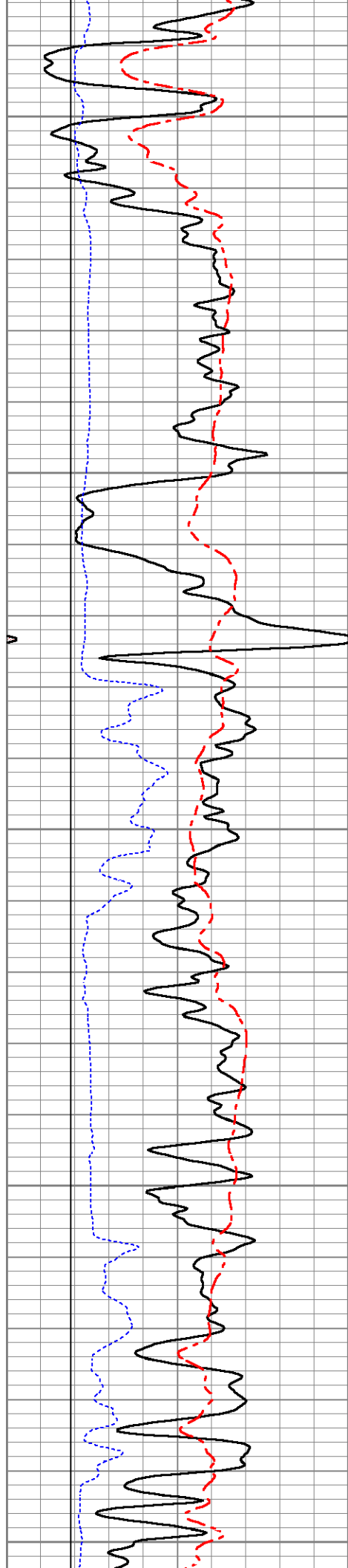
750

800

850

900





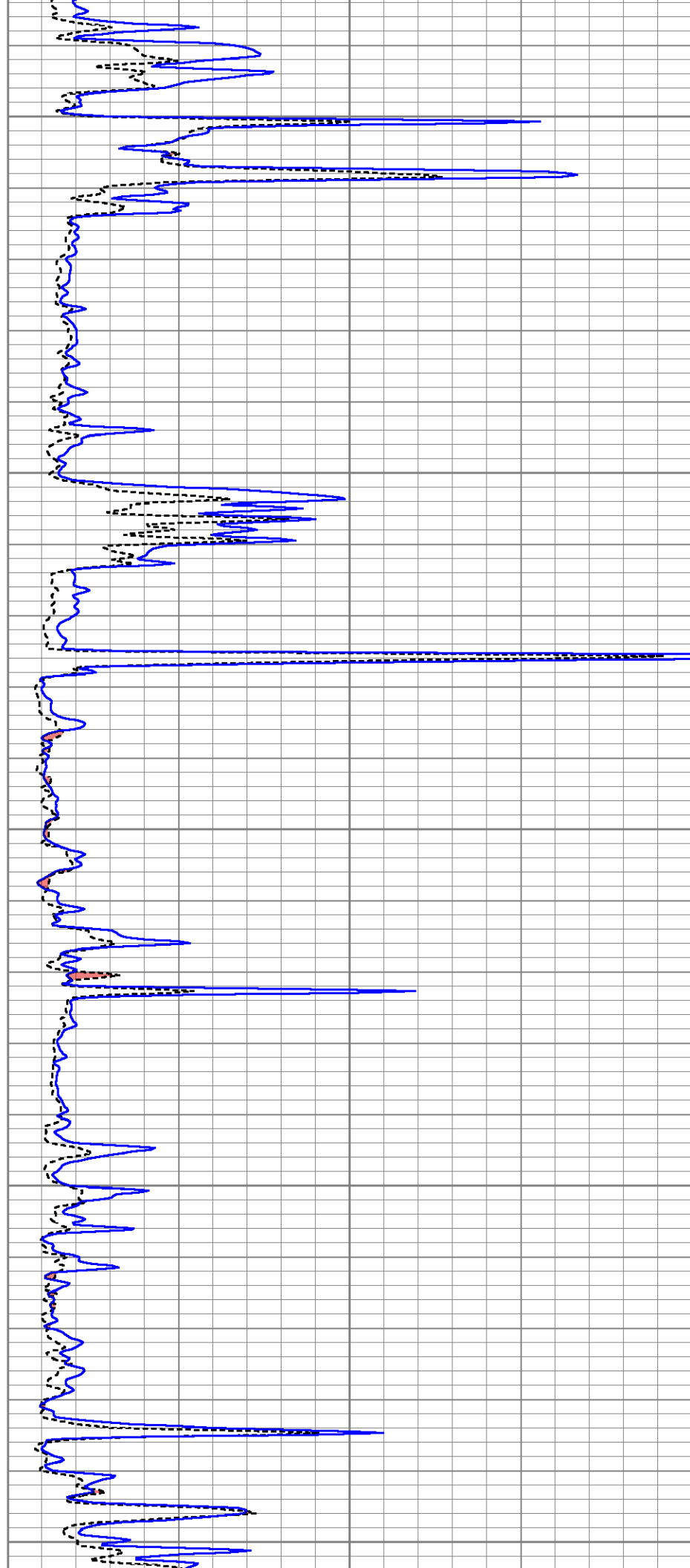
950

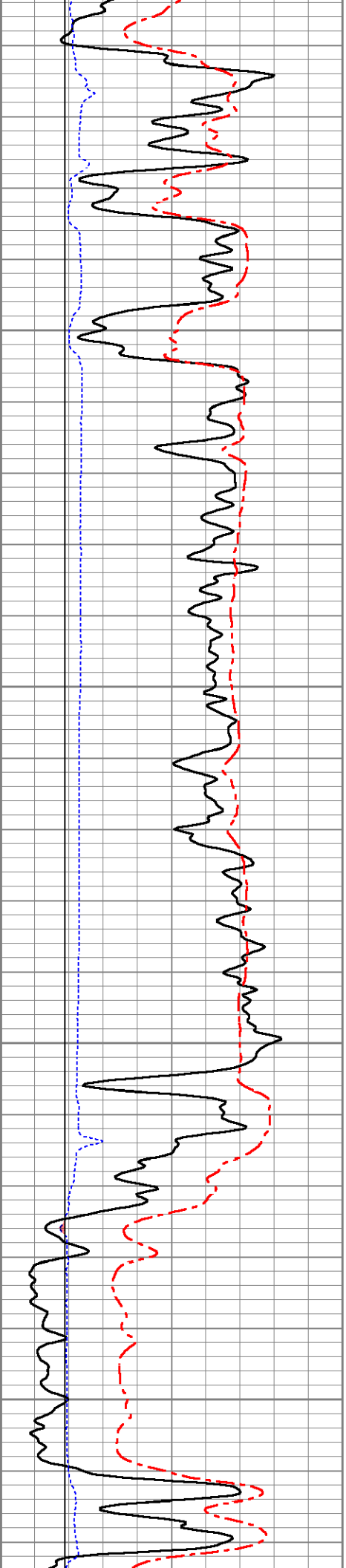
1000

1050

1100

1150



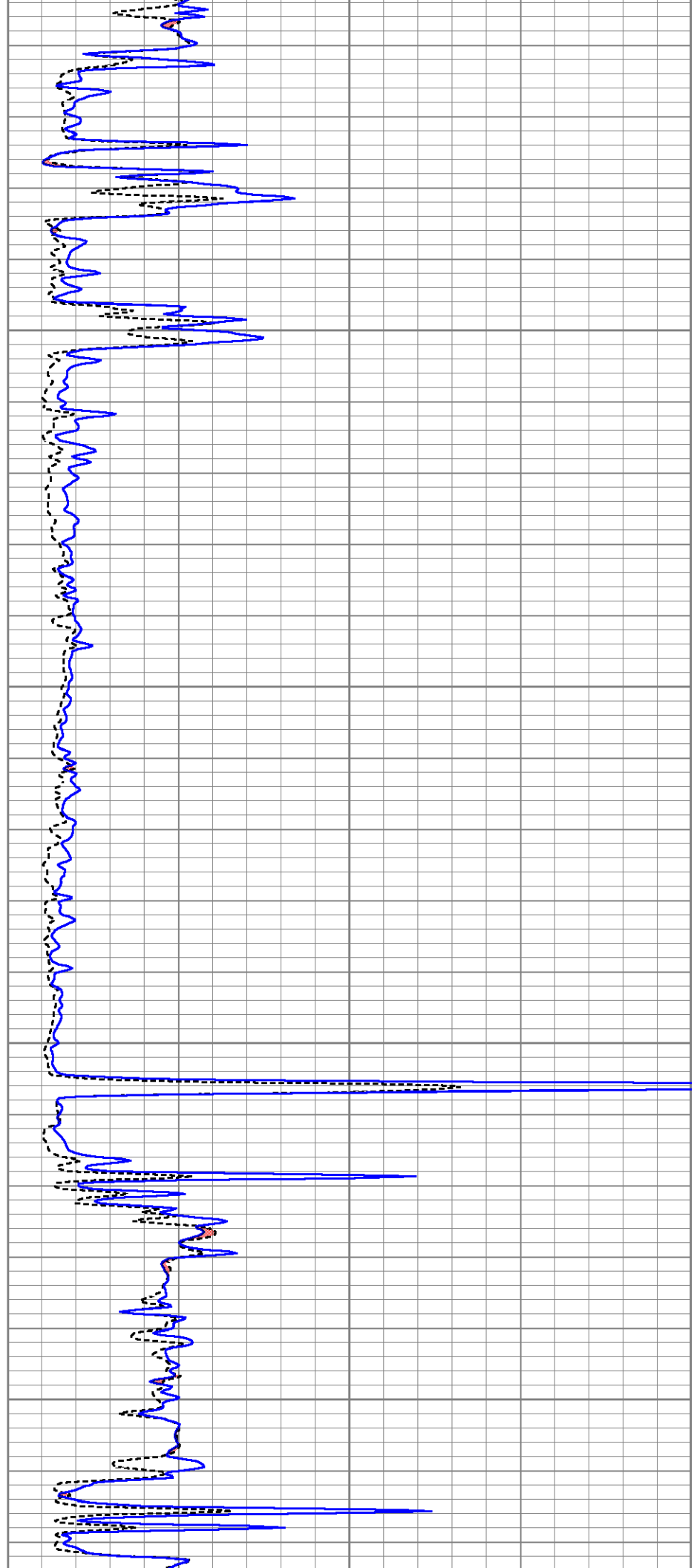


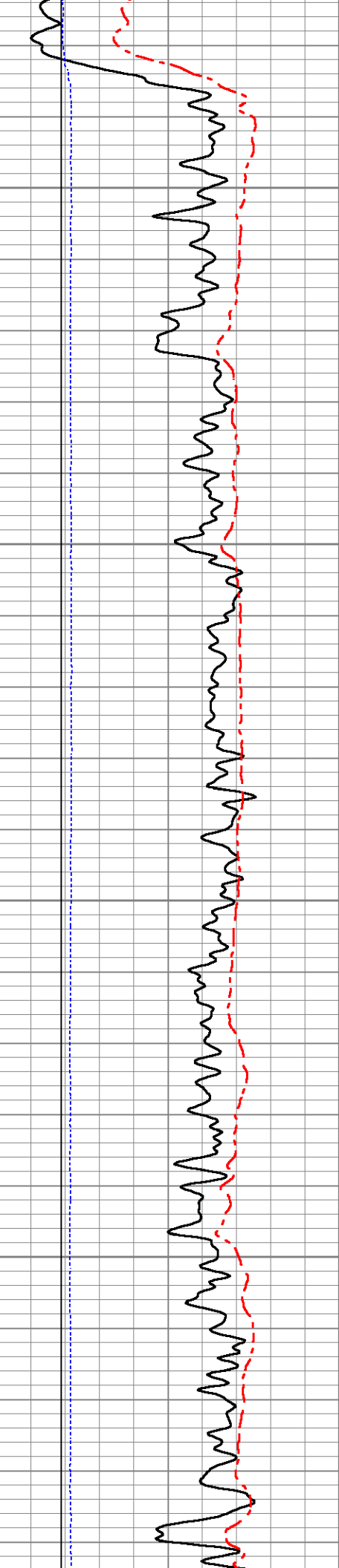
1200

1250

1300

1350



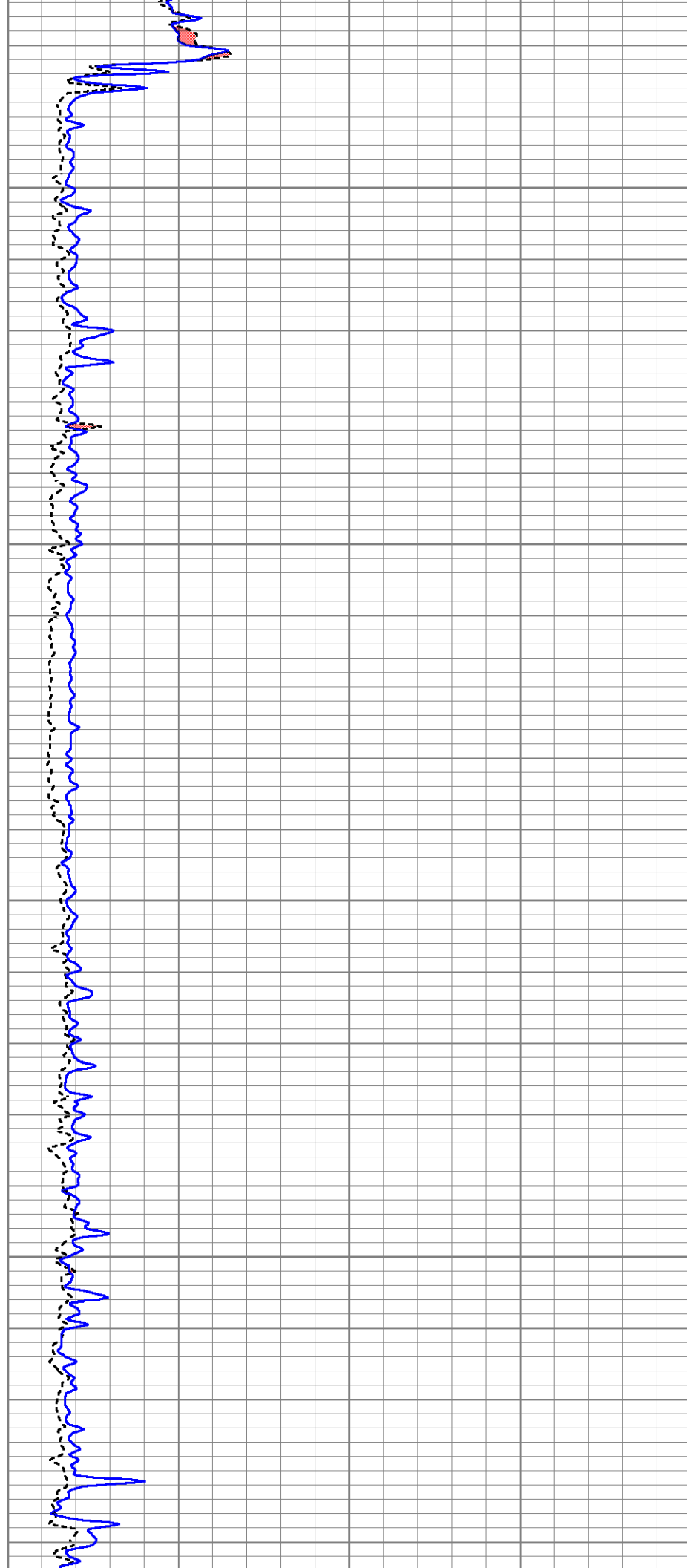


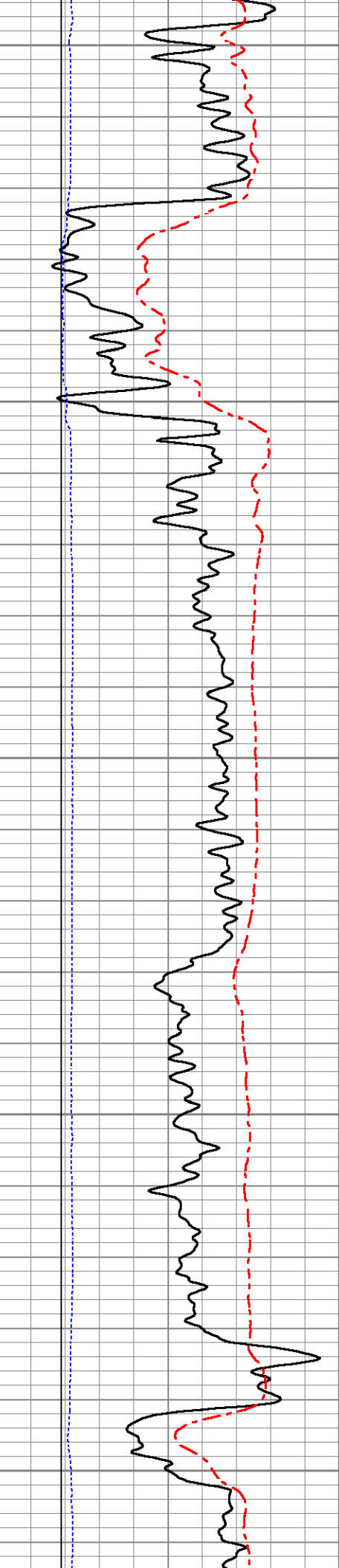
1400

1450

1500

1550





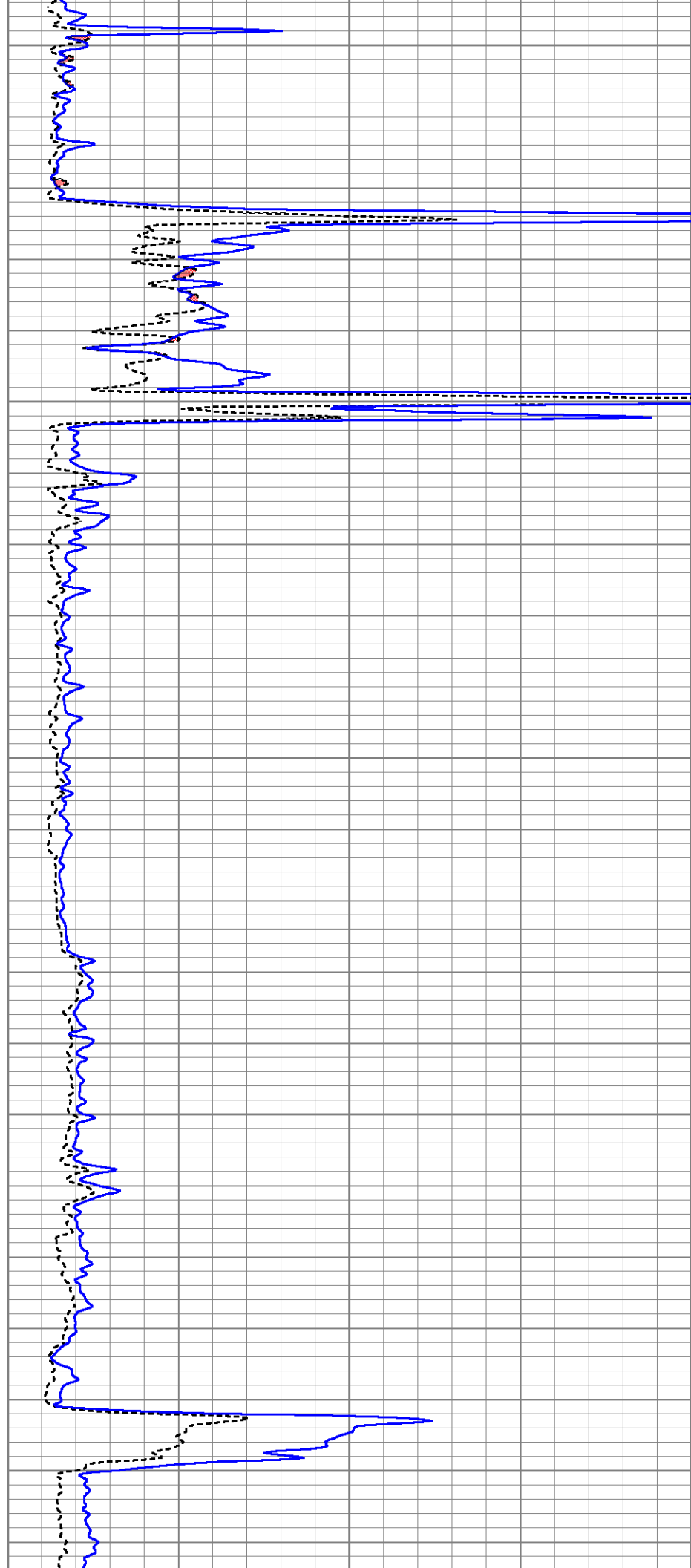
1600

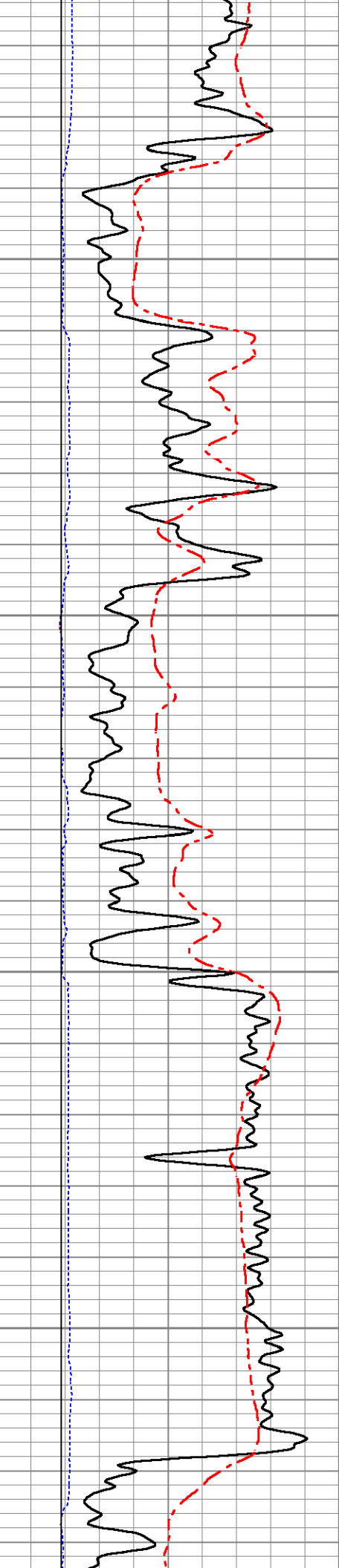
1650

1700

1750

1800



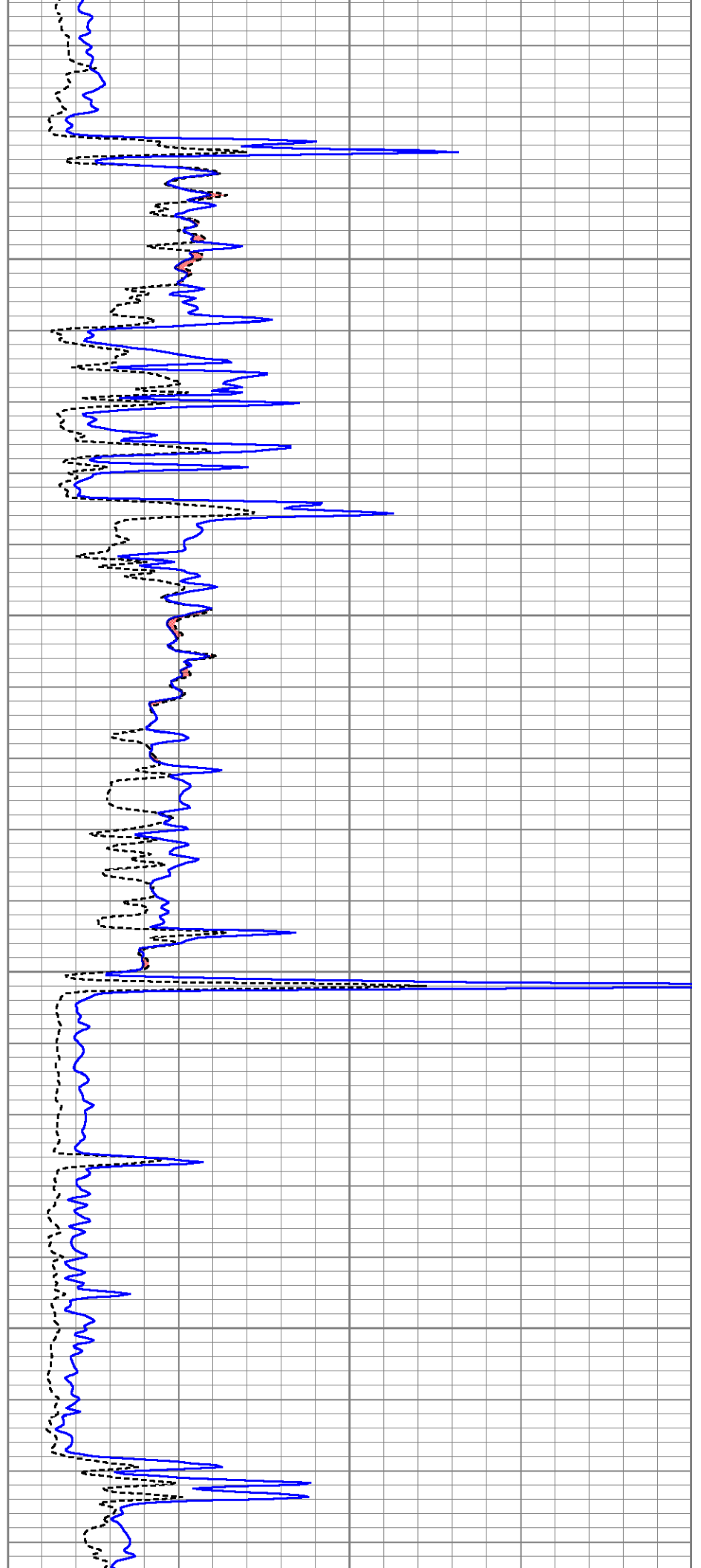


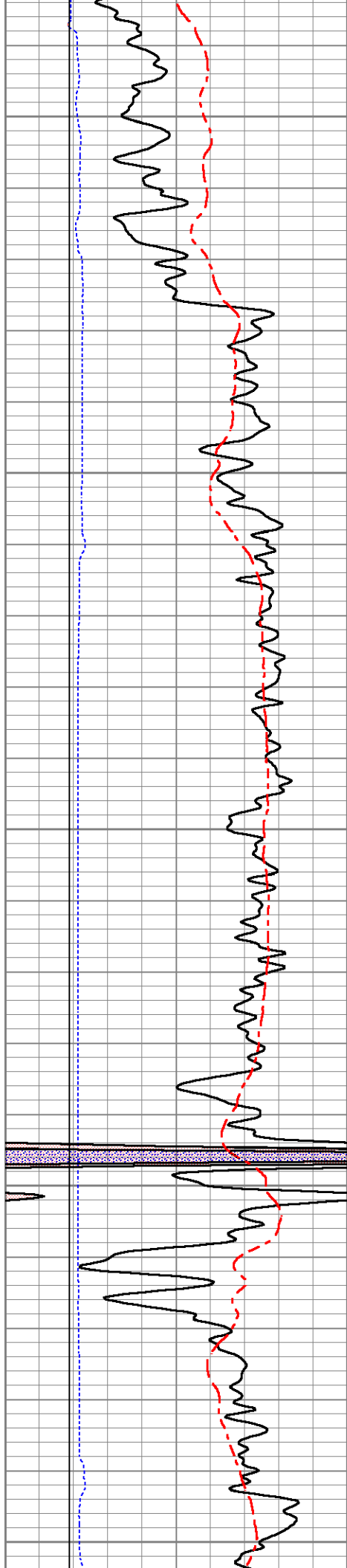
1850

1900

1950

2000





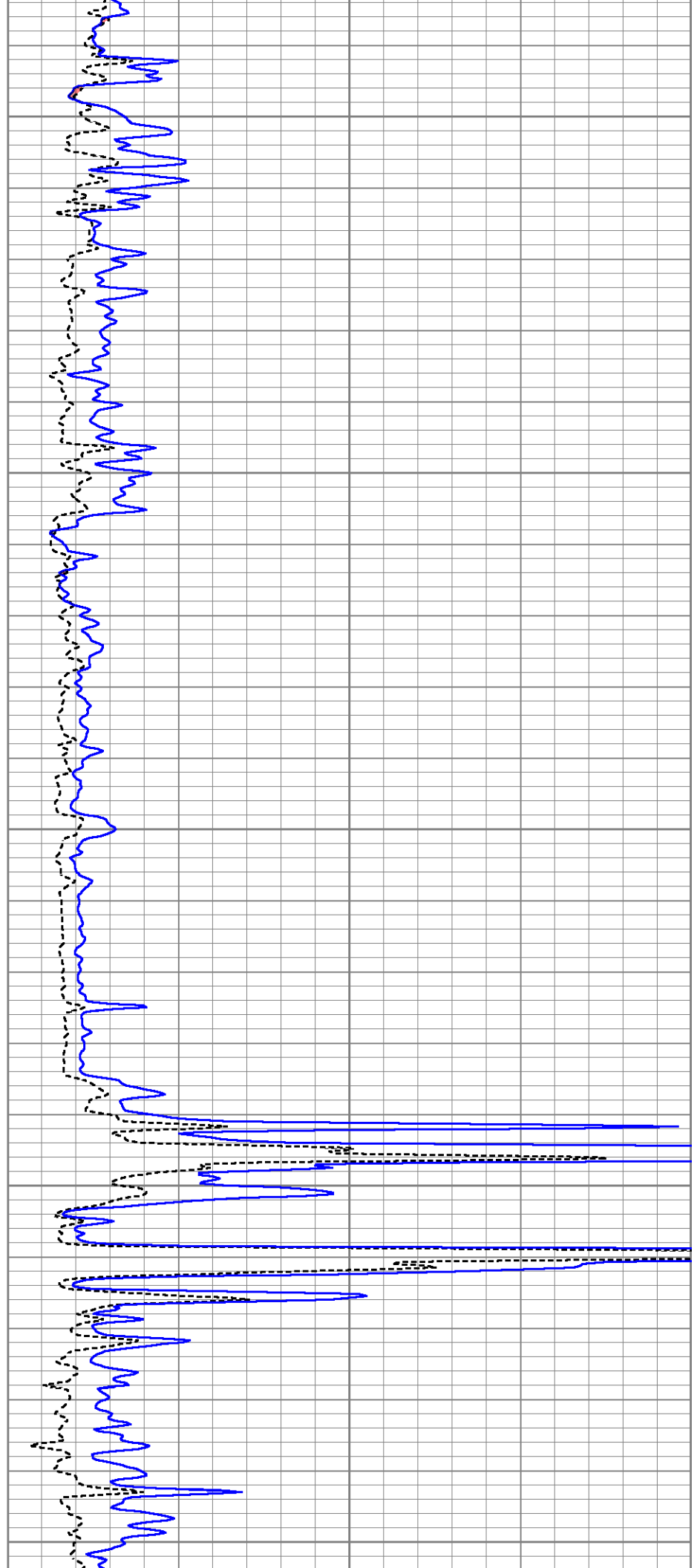
2050

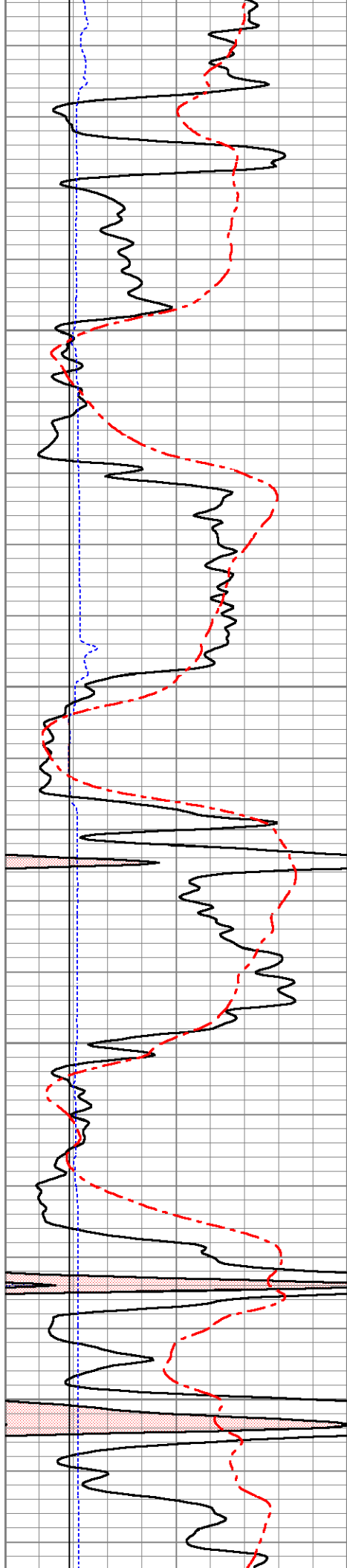
2100

2150

2200

2250



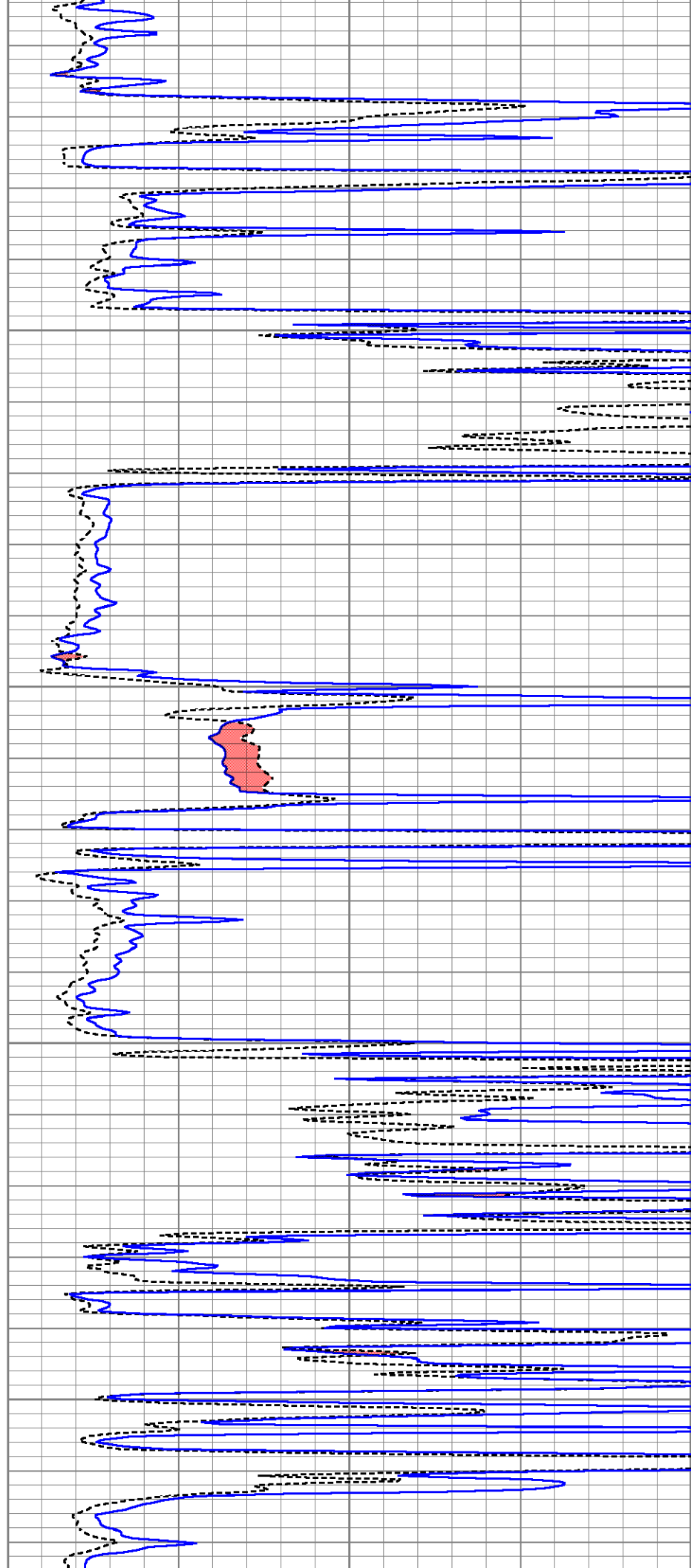


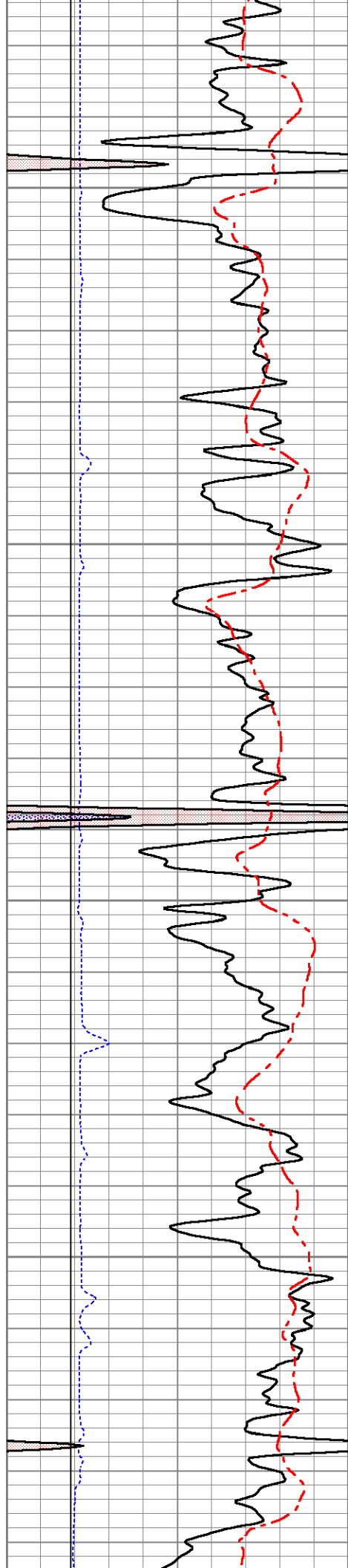
2300

2350

2400

2450



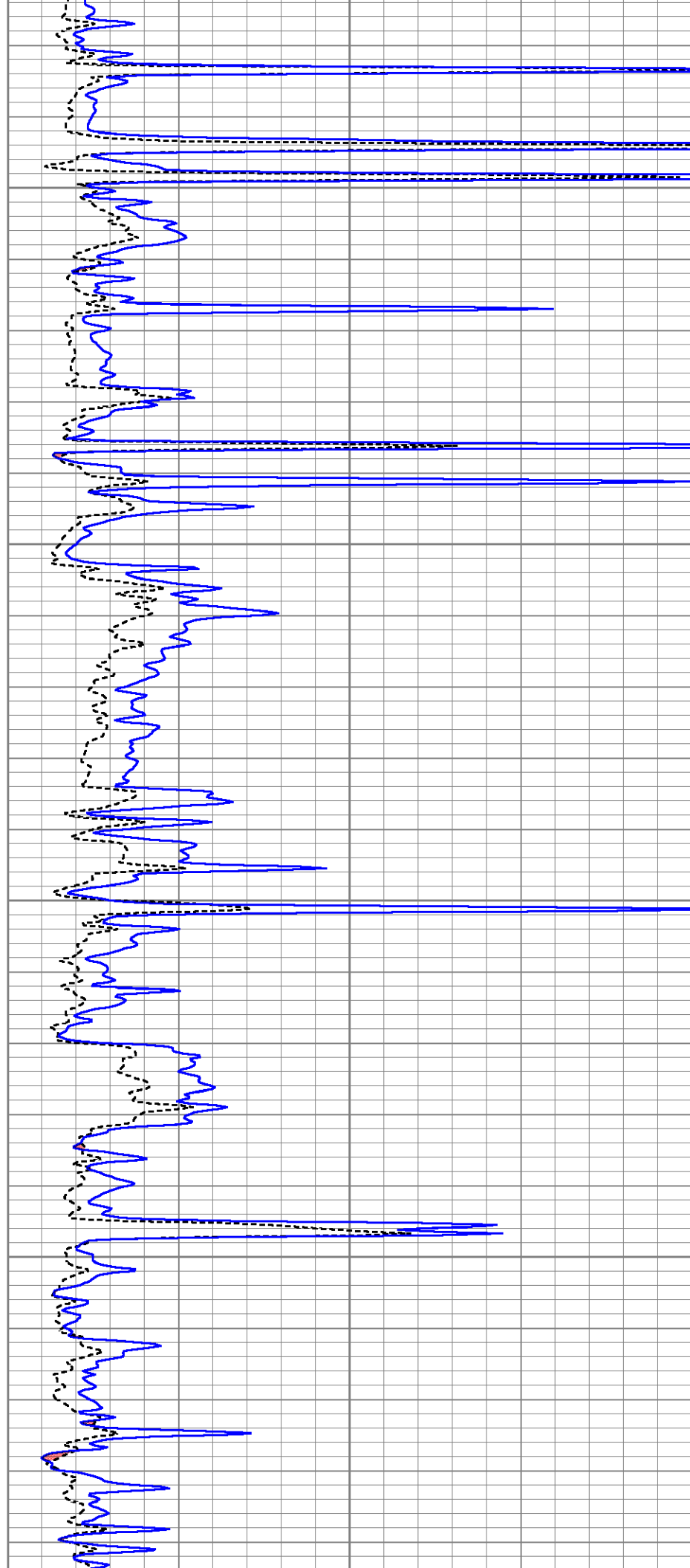


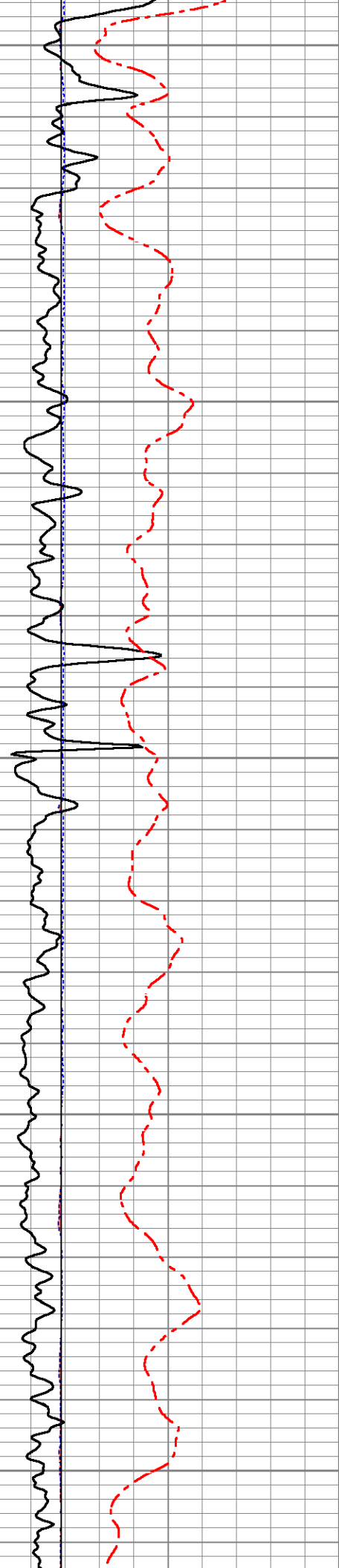
2500

2550

2600

2650





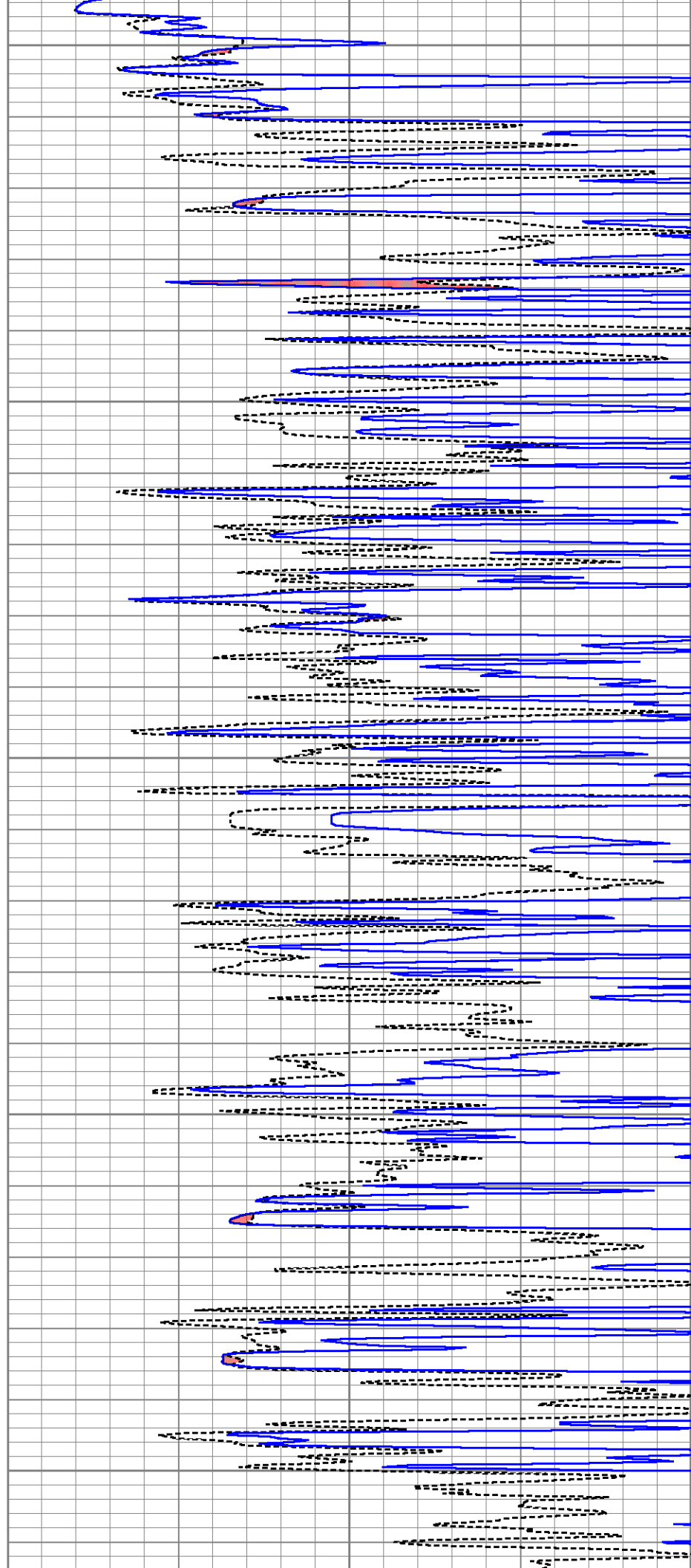
2700

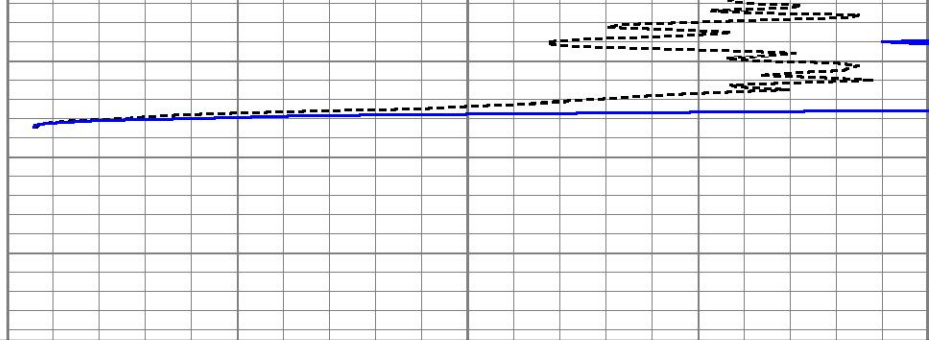
2750

2800

2850

2900





0	Gamma Ray (GAPI)	150
6	Micro Caliper (in)	16
6	Bit Size (in)	16
0	Spontaneous Potential (mV)	180

0	Micro Normal (Ohm-m)	40
0	Micro Inverse (Ohm-m)	40

Sensor	Offset (ft)	Schematic	Description	Length (ft)	O.D. (in)	Weight (lb)	
ACCY	31.04		ADMYR_TELEMETRY-OSAGE_01 (Refurb01) Admyr Telemetry With Gr, Deviation, ADC board and Pulses Board in it.	3.69	3.25	53.00	
ACCX	31.04						
GR	29.86						
FRAMES	28.54						
SSTAT	28.54						
PSTAT	28.54			MICRO_DIG-Osage (01) Digital Microlog	7.21	5.13	137.00
ASTAT	28.54						
MI	23.00						
MN	23.00						
MCAL	22.00						
ASTAT2	21.33						
SP	10.92			DIL-G (5375) Gearhart	21.33	4.00	290.00
CILD	10.92						
CILM	7.00						
RLL3	1.65						
TR_Mon	0.00						

Dataset:	ow2-8993 clapp oil.db: field/well/run1/pass2
Total length:	32.23 ft
Total weight:	480.00 lb
O.D.:	5.13 in