



DUAL INDUCTION
LL3/GR LOG

Company CLAPP OIL COMPANY
Well SMITH # C-1
Field OLSEN
County COWLEY
State KANSAS

Company CLAPP OIL COMPANY
Well SMITH # C-1
Field OLSEN
County COWLEY
State KANSAS

Location: API #: 15-035-24747-00-00
SWNE SW/NE
3390' FSL & 3390' FWL
SEC 1 TWP 35S RGE 7E
Permanent Datum GL Elevation 1224
Log Measured From GL
Drilling Measured From GL
Other Services
CDLN
MEL
Elevation
K.B.
D.F.
G.L. 1224

Date	10-18-21
Run Number	ONE
Depth Driller	2952
Depth Logger	2950
Bottom Logged Interval	2947
Top Log Interval	350
Casing Driller	8.625" @ 325'
Casing Logger	8.625" @ 325'
Bit Size	7.875"
Type Fluid in Hole	CHEMICAL
Density / Viscosity	9.2 / 55
pH / Fluid Loss	9.5 / 8.0
Source of Sample	PIT
Rm @ Meas. Temp	3.3 @ 80
Rmf @ Meas. Temp	2.6 @ 80
Rmc @ Meas. Temp	3.8 @ 80
Source of Rmf / Rmc	CAL
Rm @ BHT	2.3 @ 117
Time Circulation Stopped	7:00 PM
Time Logger on Bottom	10:00 PM
Maximum Recorded Temperature	117
Equipment Number	OW2
Location	HOMINY, OK
Recorded By	MACKEY
Witnessed By	MR. CLAPP
	KIDD
	MR. WALLER
	TAFT
	MR. WOLFE

<<< Fold Here >>>

All interpretations are opinions based on inferences from electrical or other measurements and we cannot and do not guarantee the accuracy or correctness of any interpretation, and we shall not, except in the case of gross or willful negligence on our part, be liable or responsible for any loss, costs, damages, or expenses incurred or sustained by anyone resulting from any interpretation made by any of our officers, agents or employees. These interpretations are also subject to our general terms and conditions set out in our current Price Schedule.

Comments

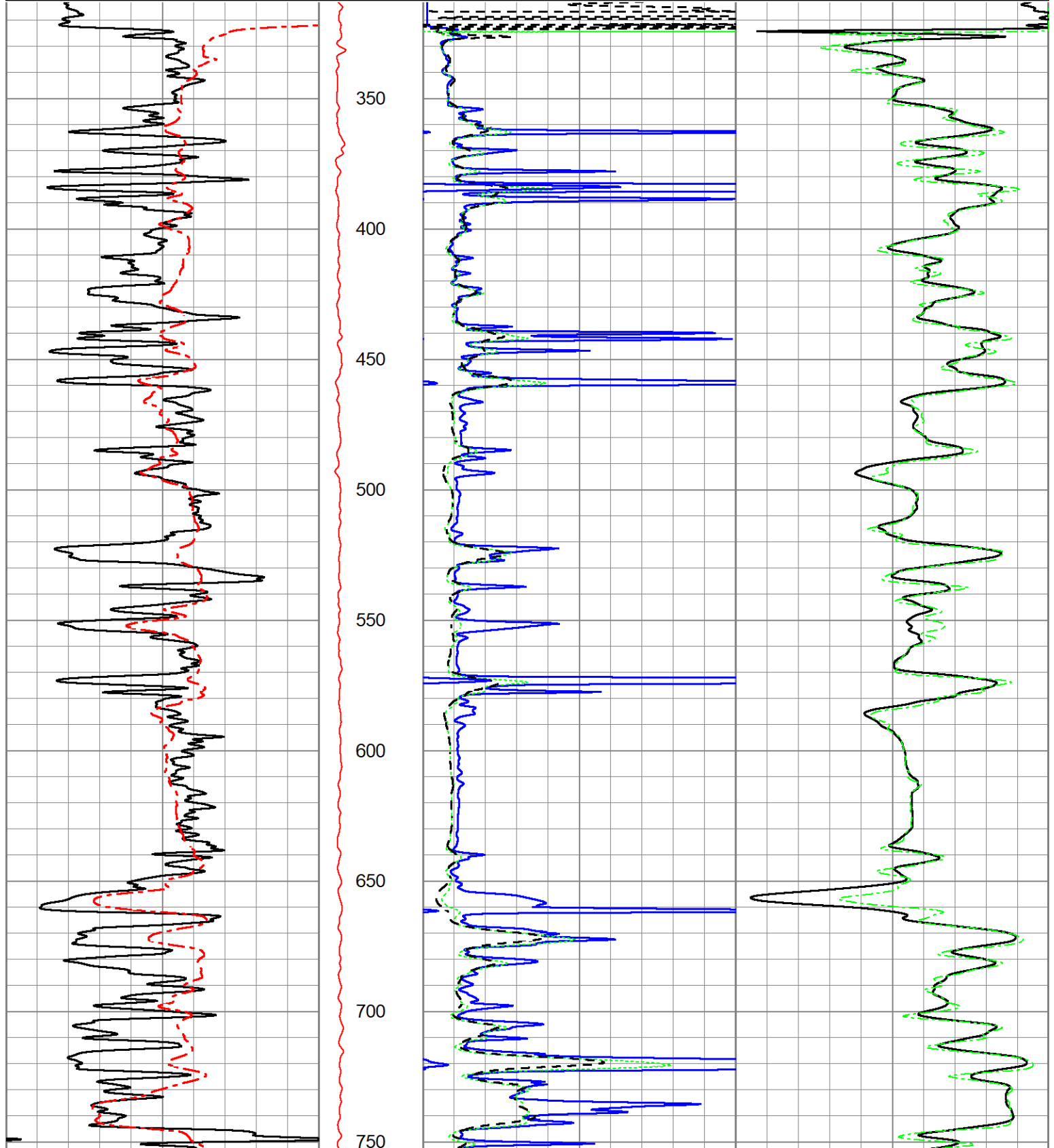
FILE # OW2-8993 CLAPP OIL
THANK YOU FOR USING OSAGE WIRELINE

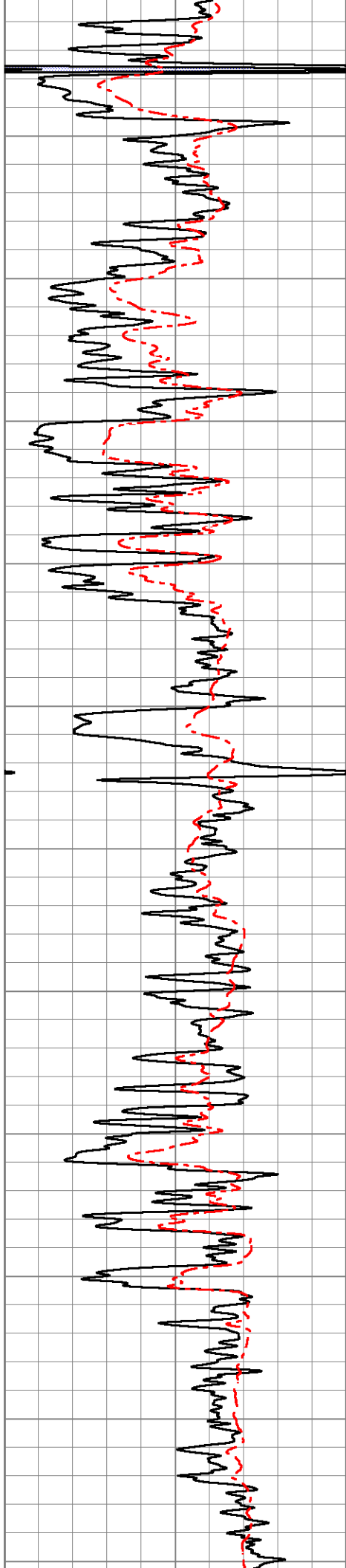


2" DUAL INDUCTION LOG

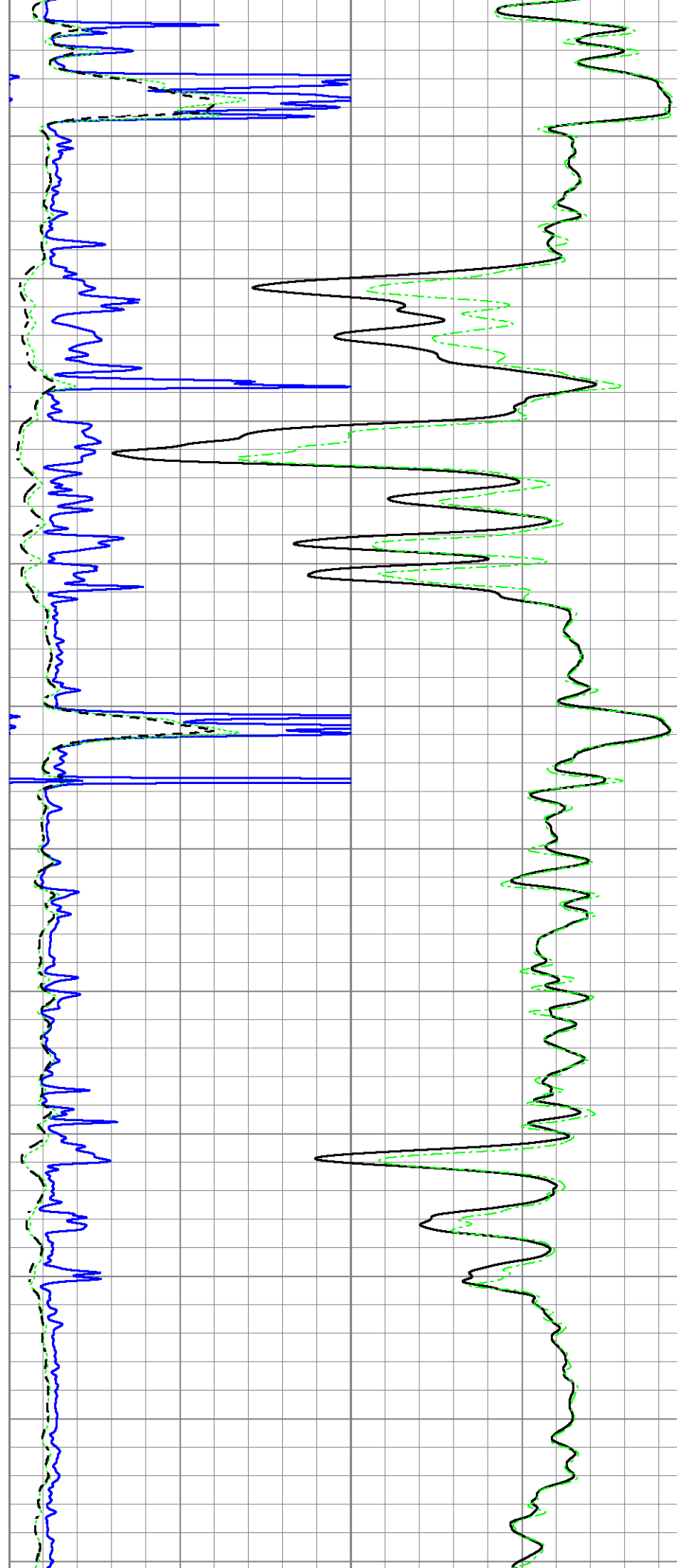
Database File ow2-8993 clapp oil.db
 Dataset Pathname pass2.5
 Presentation Format mmdil2
 Dataset Creation Tue Oct 19 00:17:35 2021
 Charted by Depth in Feet scaled 1:600

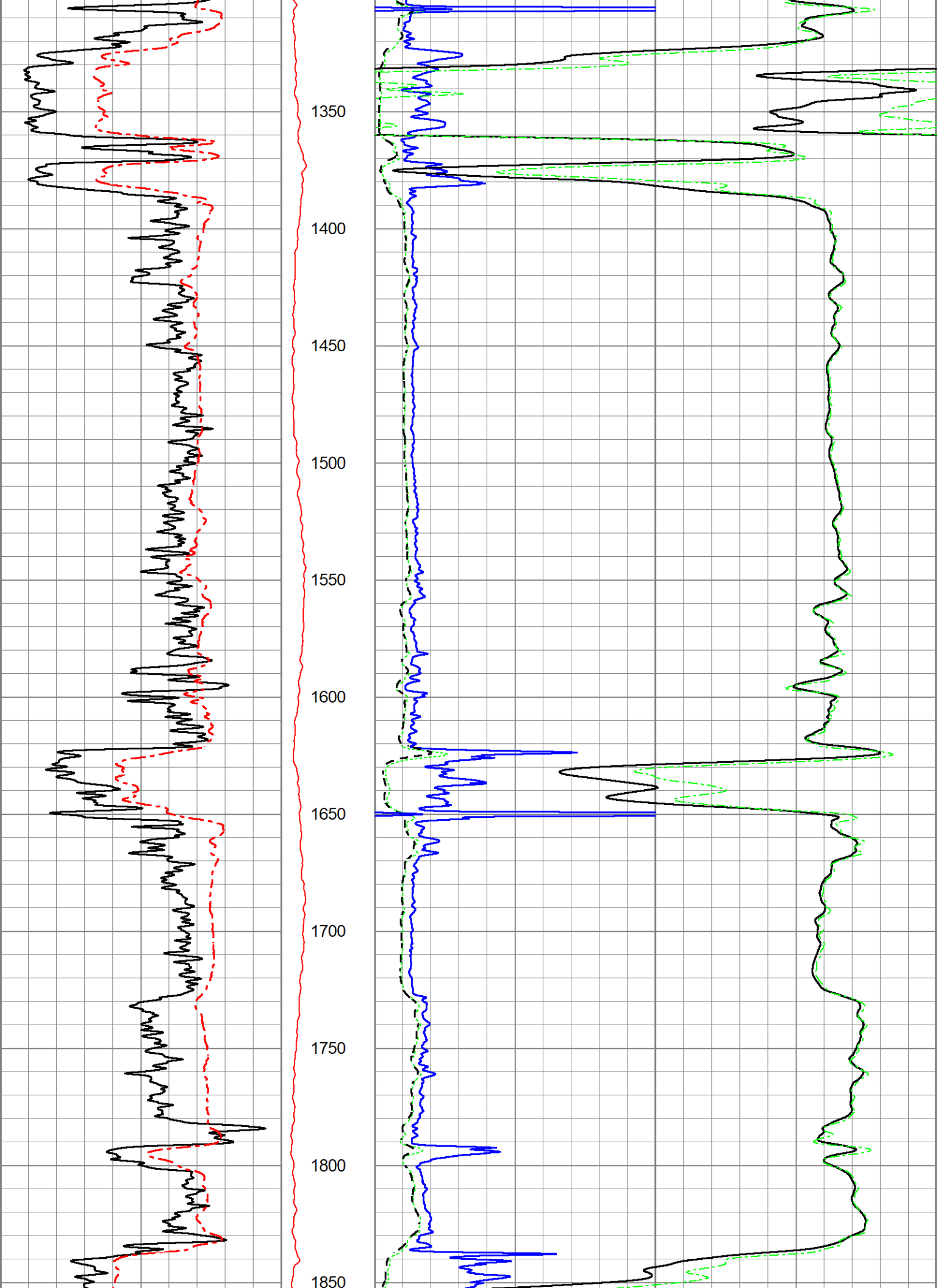
0	GR (GAPI)	150	DEVI	1000	CILD (mmho/m)	0
0	Spontaneous Potential (mV)	180	0 (deg)	10	CILM (mmho/m)	0
0				RLL3 (Ohm-m)	50	
0				RILM (Ohm-m)	50	
0				RILD (Ohm-m)	50	

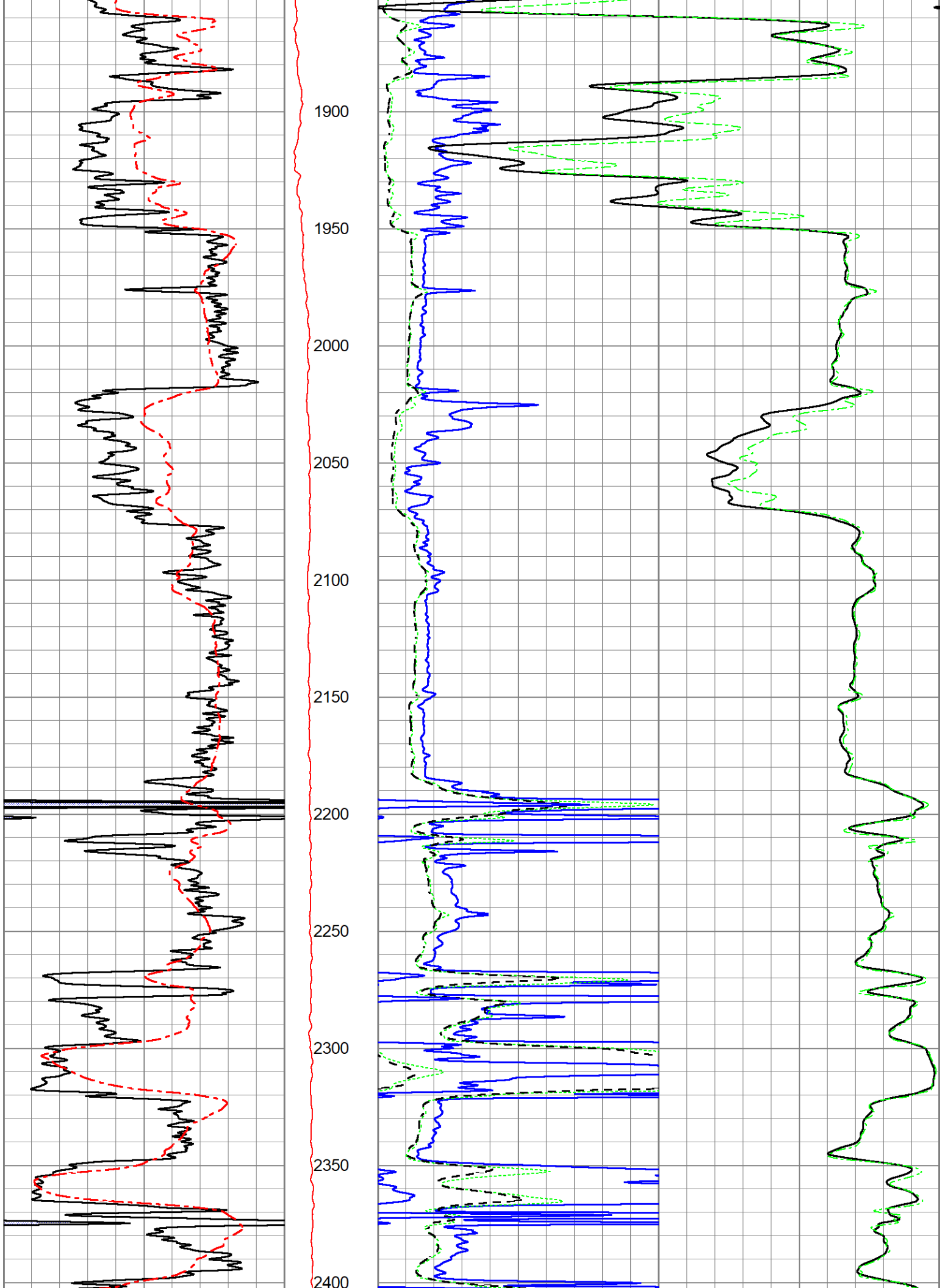


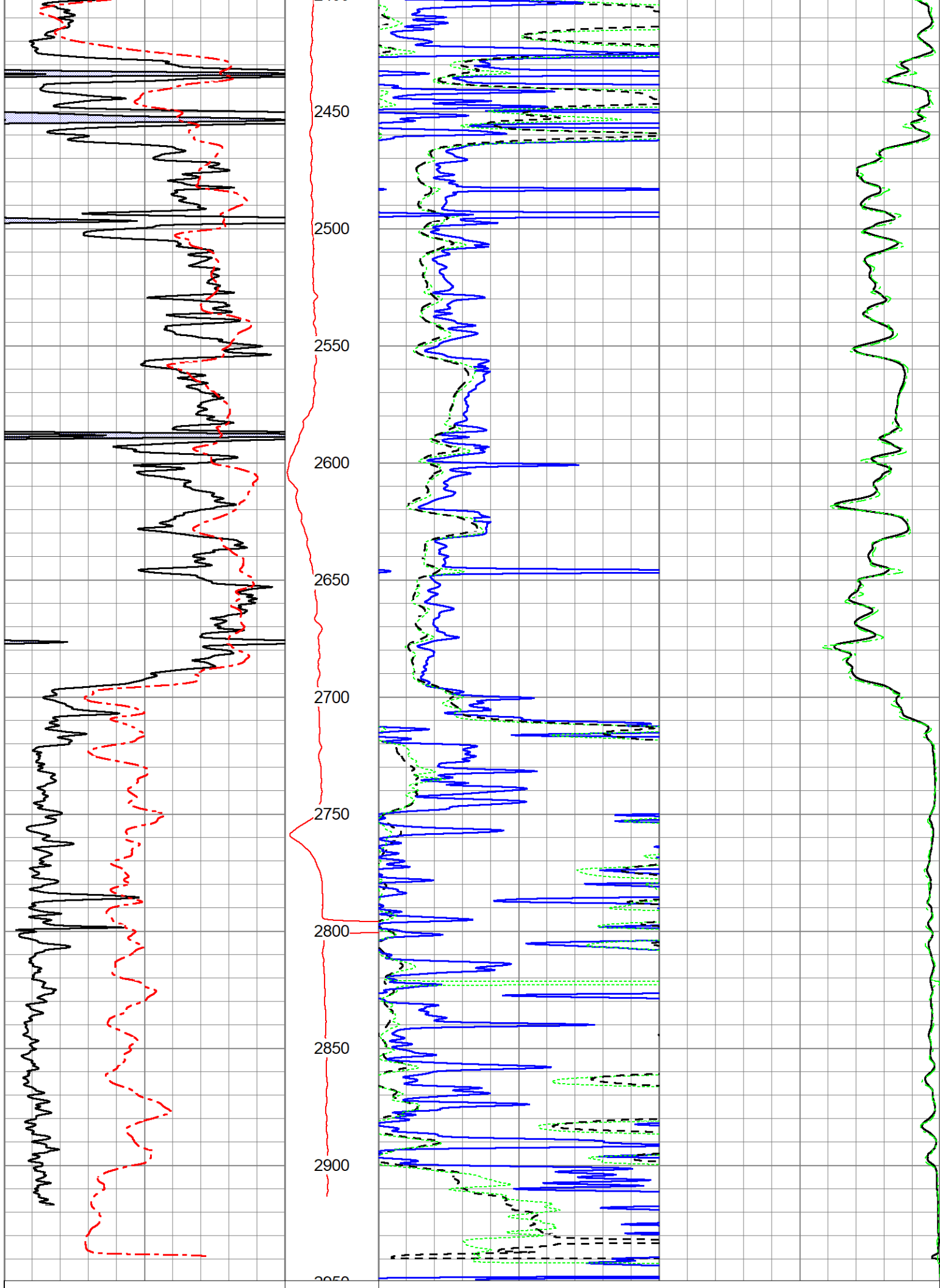


800
850
900
950
1000
1050
1100
1150
1200
1250
1300









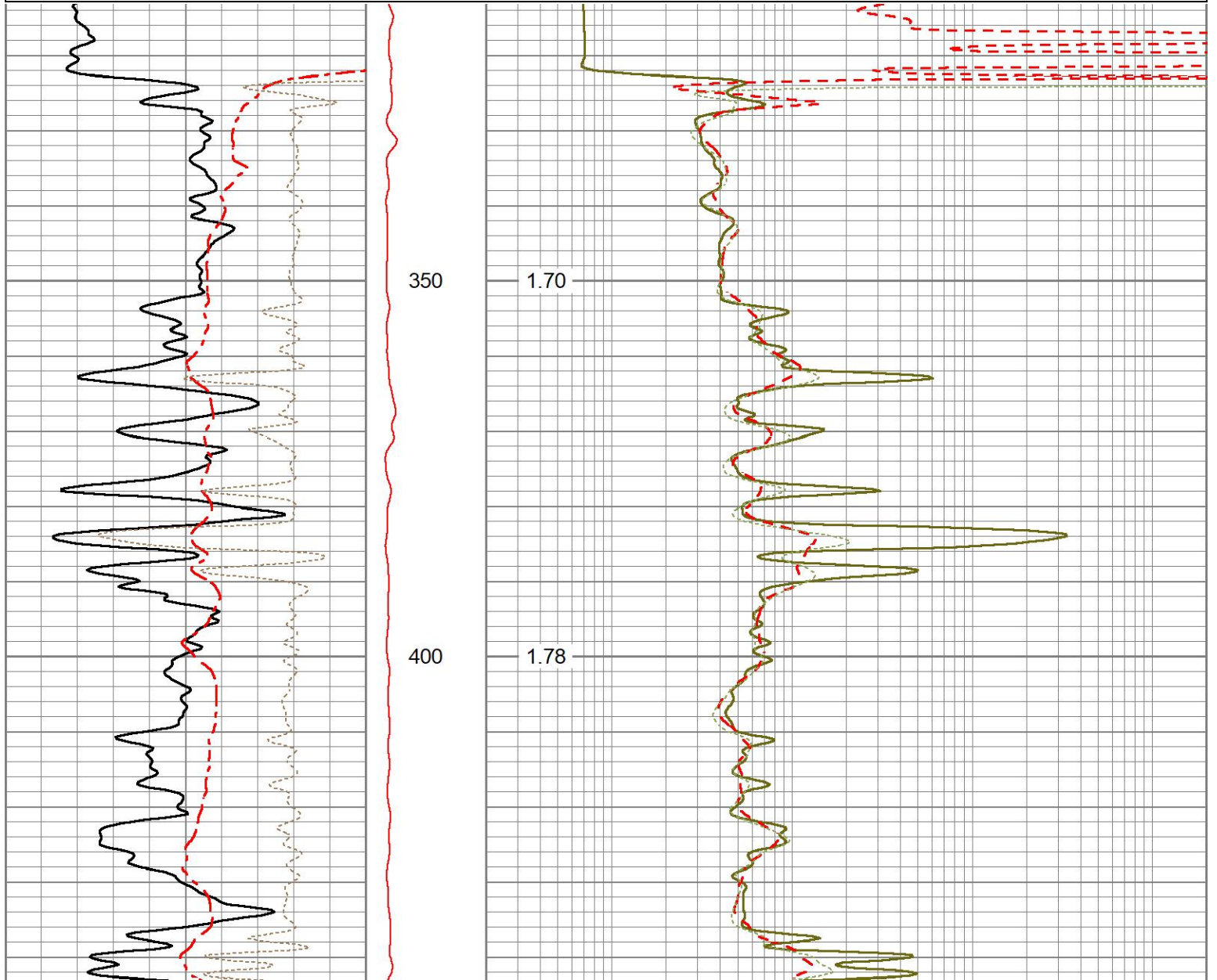
0	GR (GAPI)	150	DEVI	1000	CILD (mmho/m)	0
0	Spontaneous Potential (mV)	180	(deg)	10		
				0	RLL3 (Ohm-m)	50
				0	RILM (Ohm-m)	50
				0	RILD (Ohm-m)	50

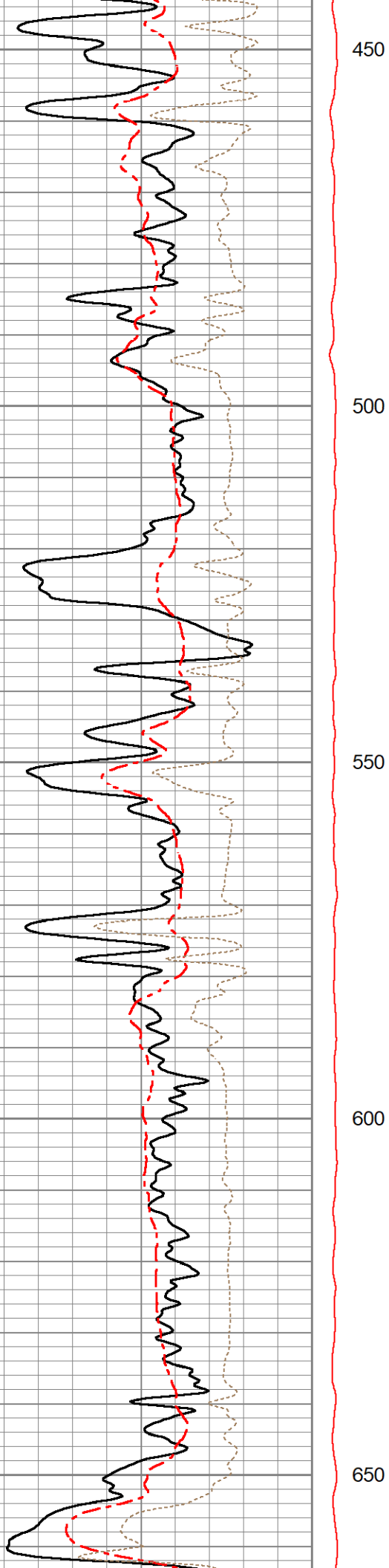


5" DUAL INDUCTION LOG

Database File ow2-8993 clapp oil.db
 Dataset Pathname pass2.6
 Presentation Format mmdil5
 Dataset Creation Tue Oct 19 00:17:49 2021
 Charted by Depth in Feet scaled 1:240

0	Gamma Ray (GAPI)	150	DEVI	0.2	Shallow Resistivity (Ohm-m)	2000
0	Spontaneous Potential (mV)	180	(deg)	10	Deep Resistivity (Ohm-m)	2000
-190	Rxo\Rt	50		0.2	Medium Resistivity (Ohm-m)	2000
				DEVI (deg)		





450

500

550

600

650

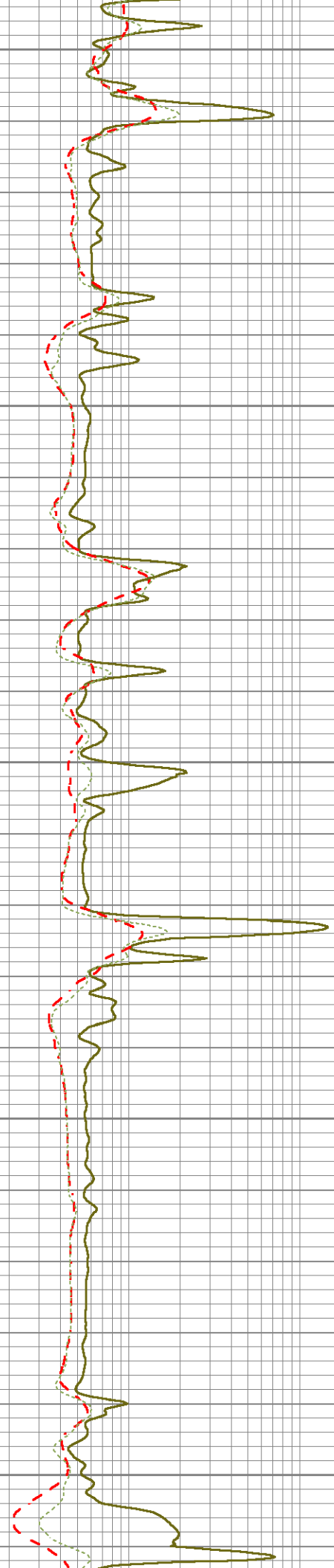
2.15

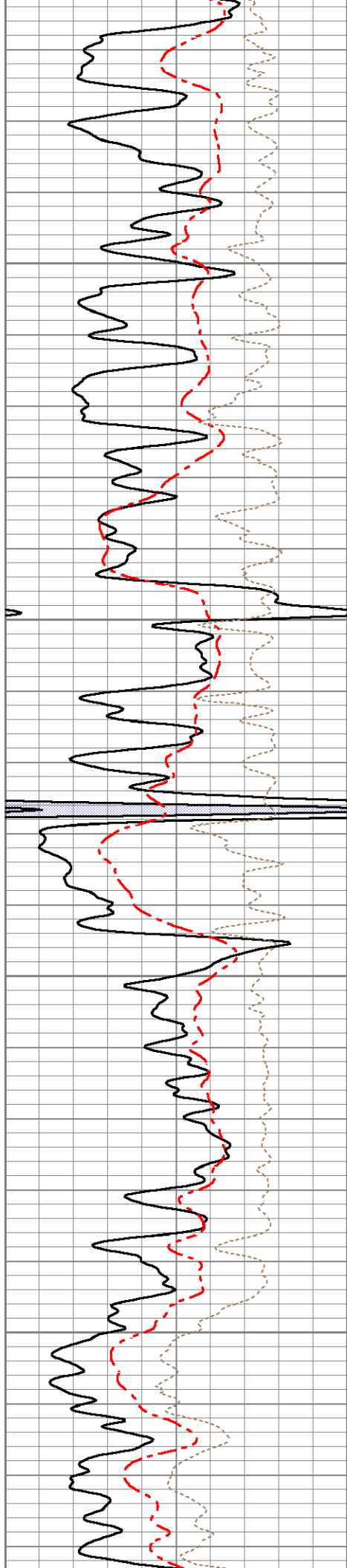
2.08

1.99

2.02

2.16





700

750

800

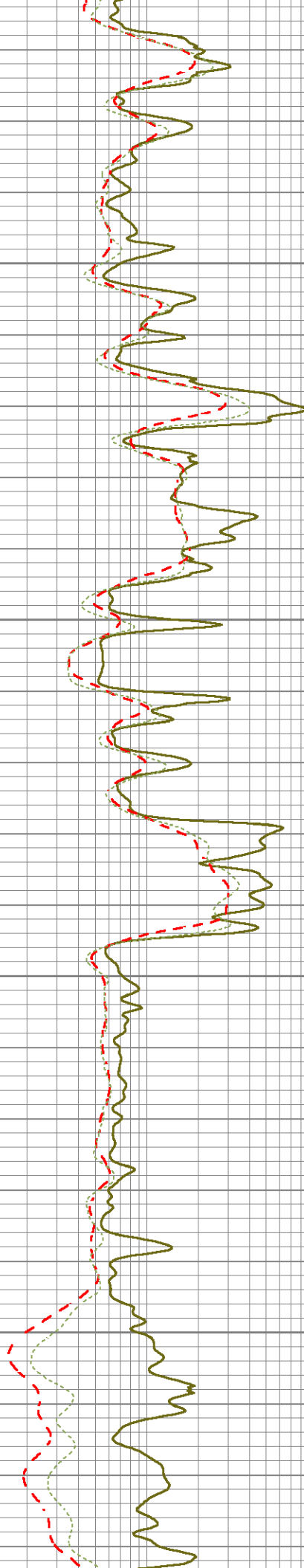
850

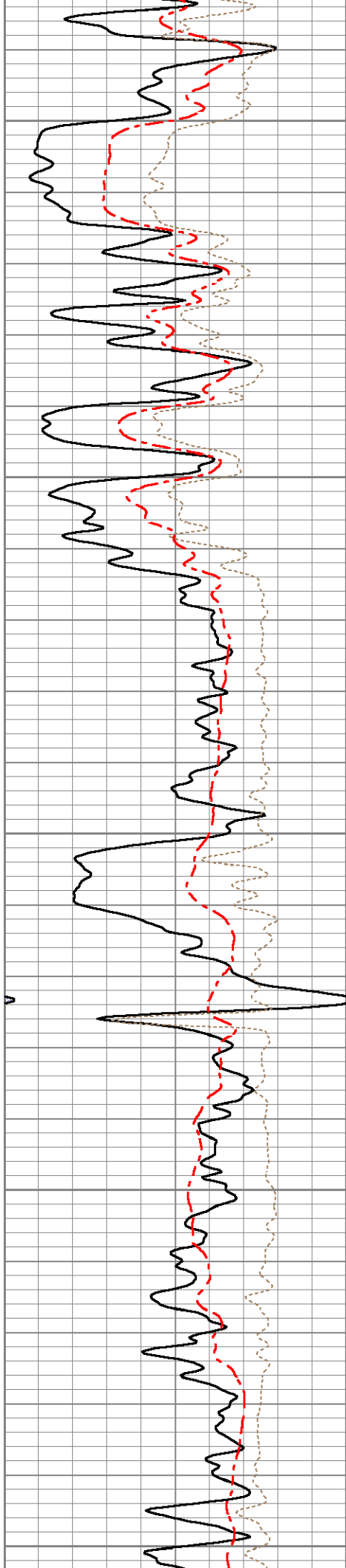
2.09

1.80

1.68

1.48





900

950

1000

1050

1100

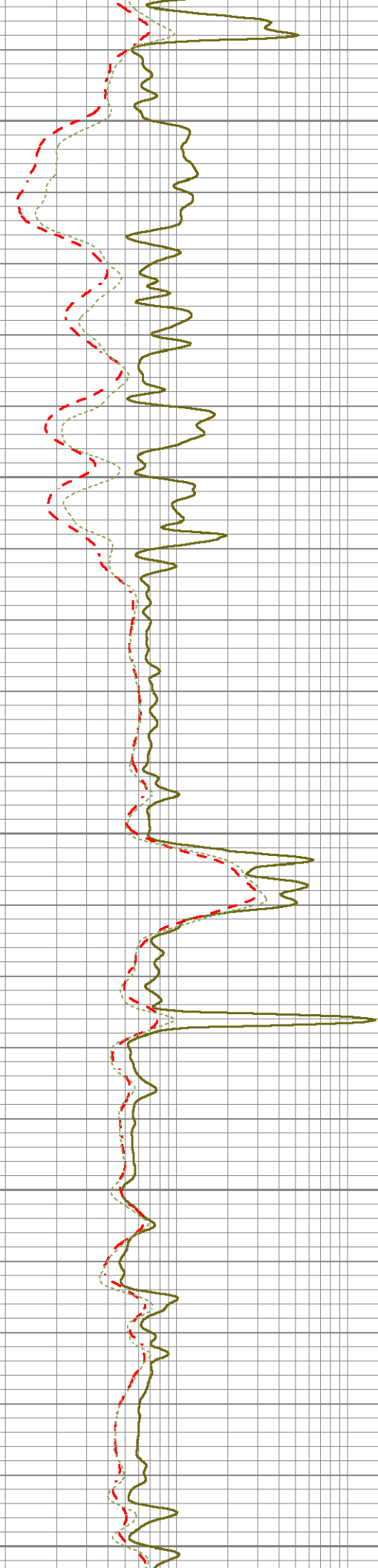
1.89

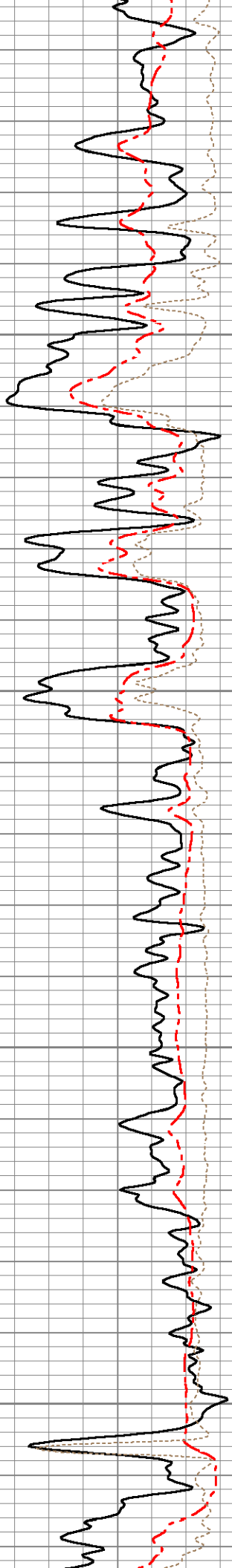
1.96

2.05

2.27

2.27





1150

1200

1250

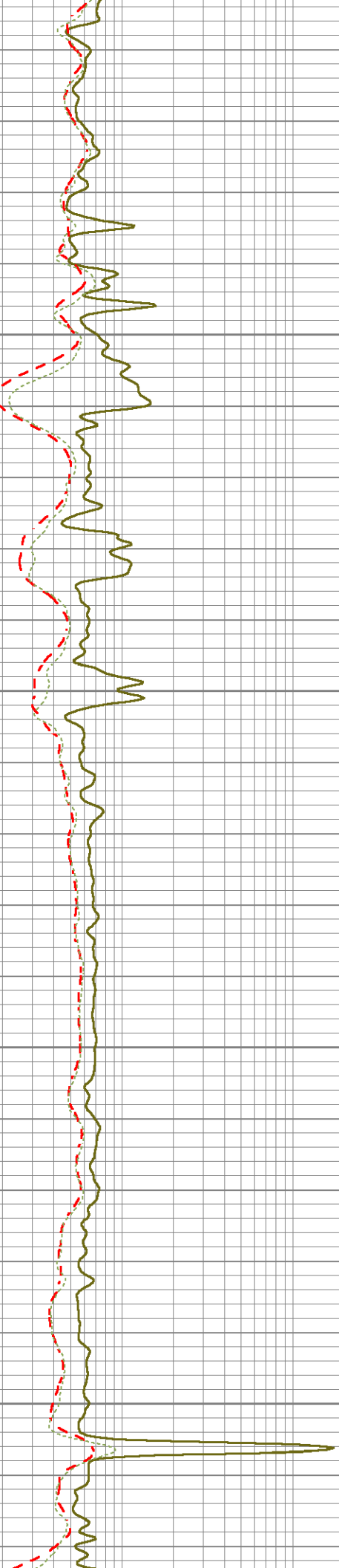
1300

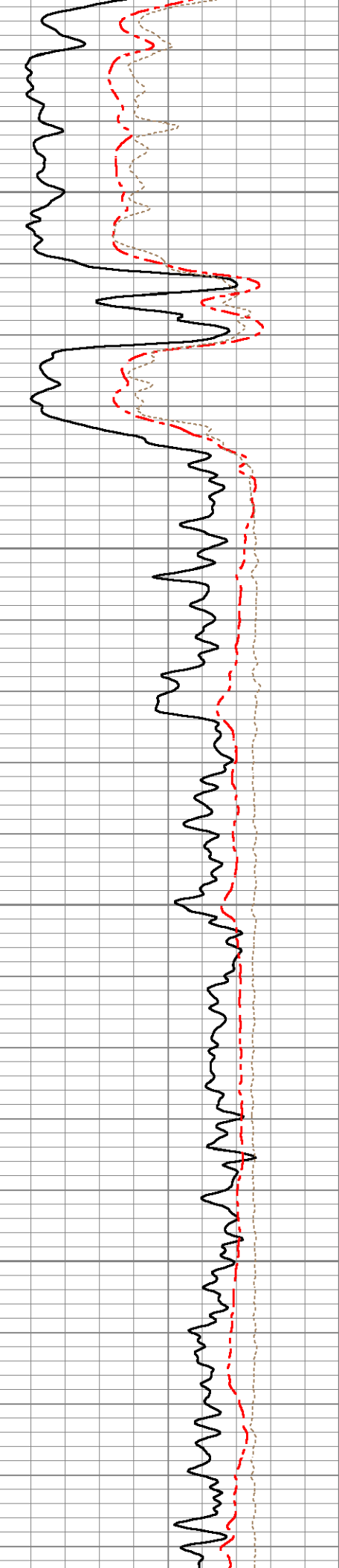
2.43

1.53

1.42

1.17



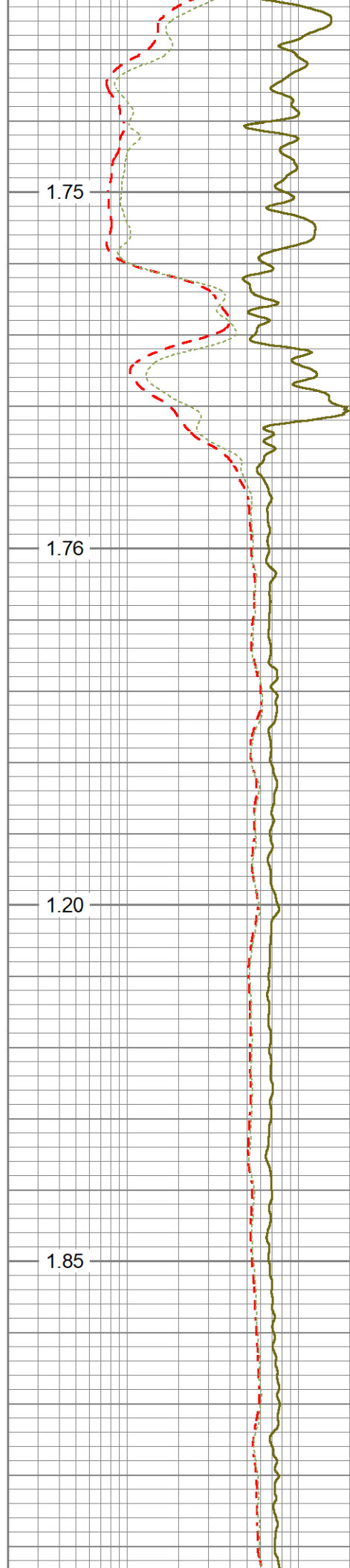


1350

1400

1450

1500

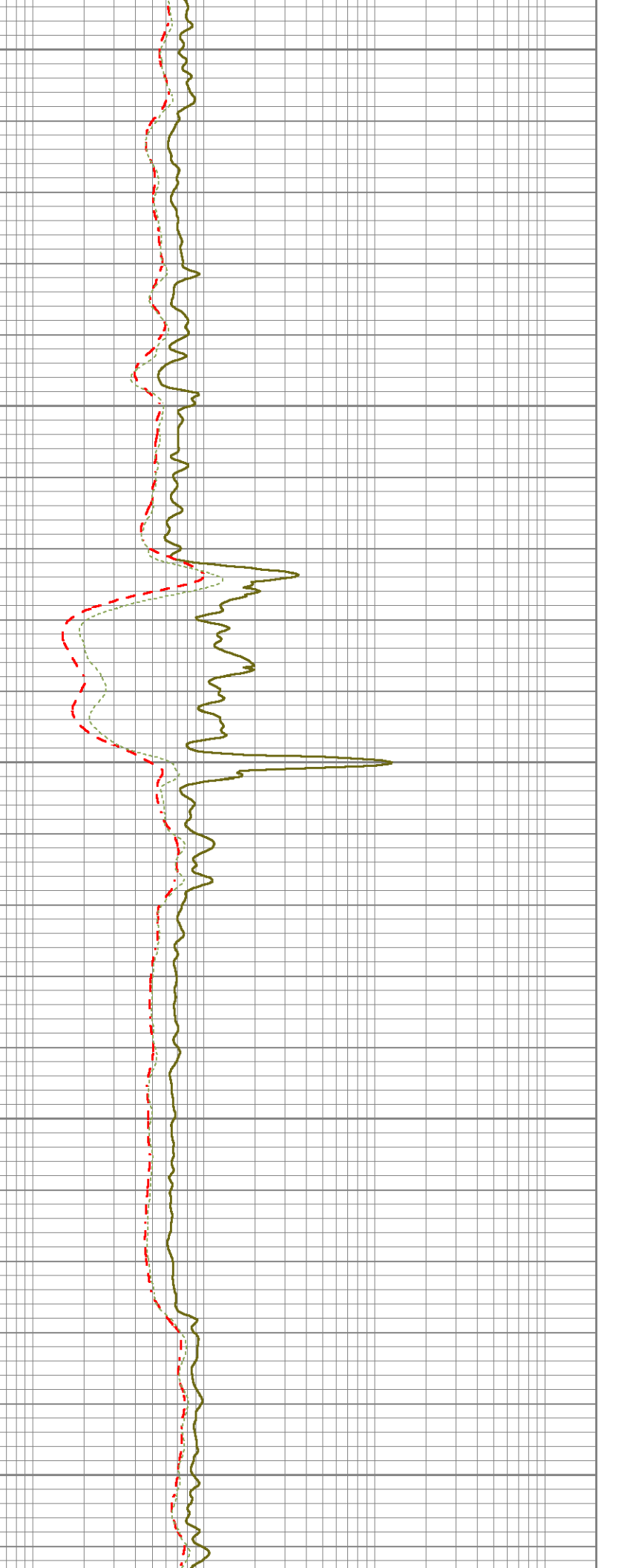
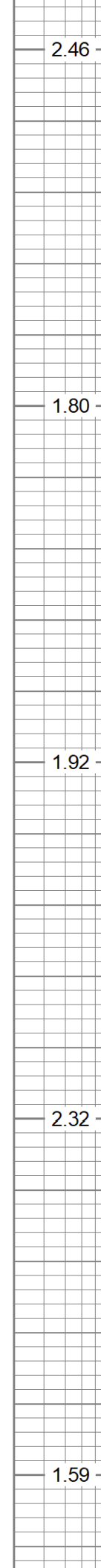
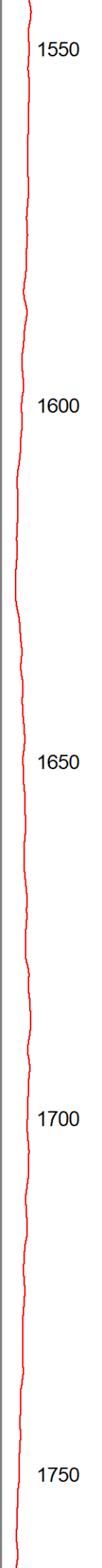
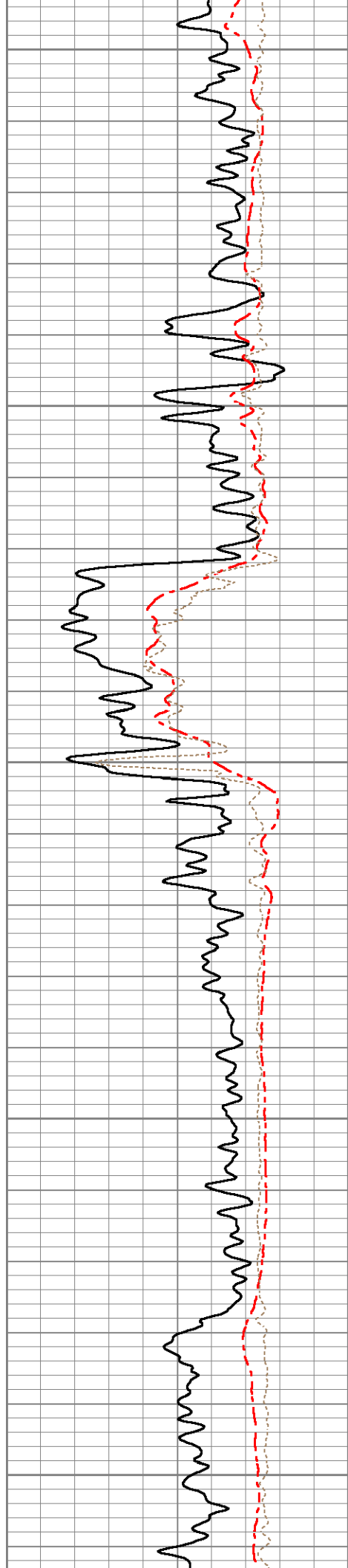


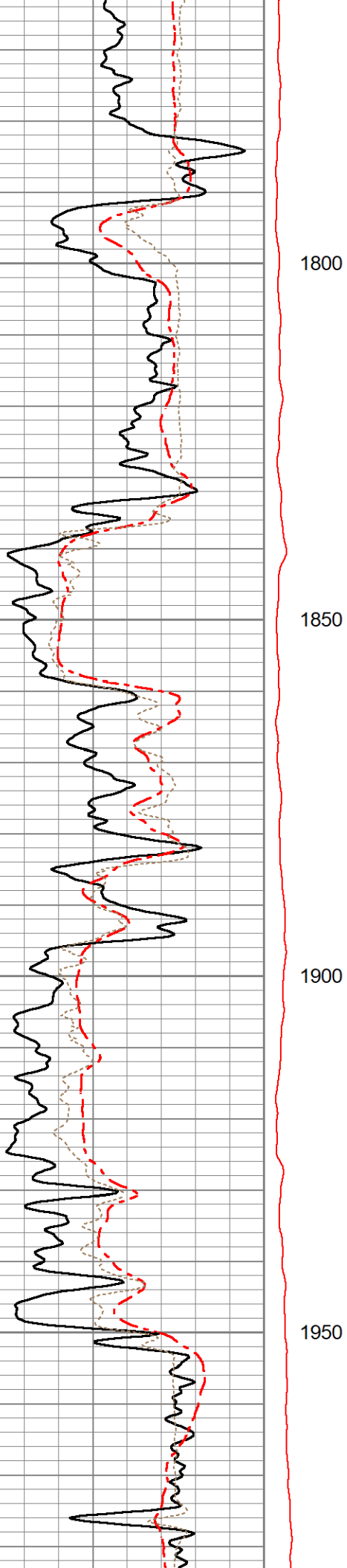
1.75

1.76

1.20

1.85





1800

1.35

1850

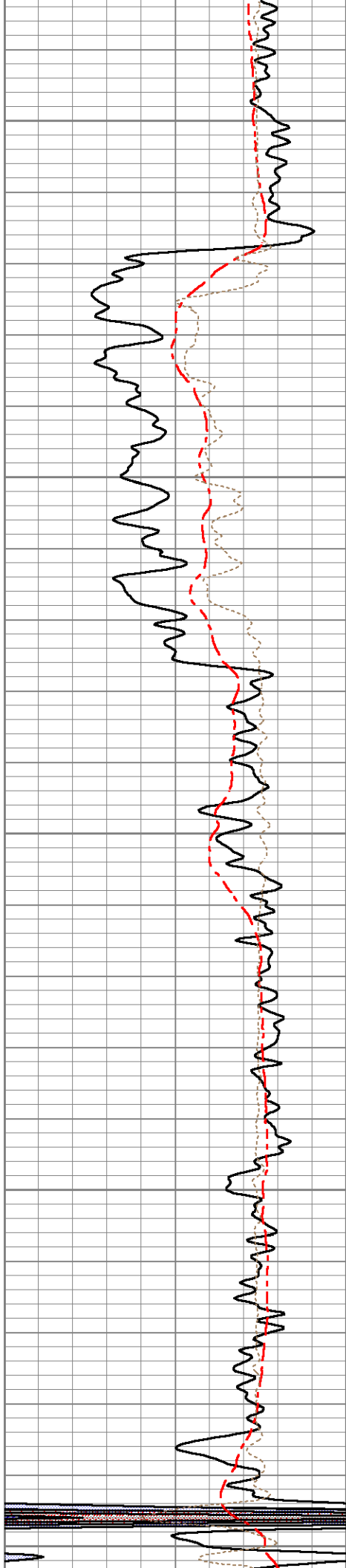
1.11

1900

1.70

1950

1.82



2000

2050

2100

2150

2200

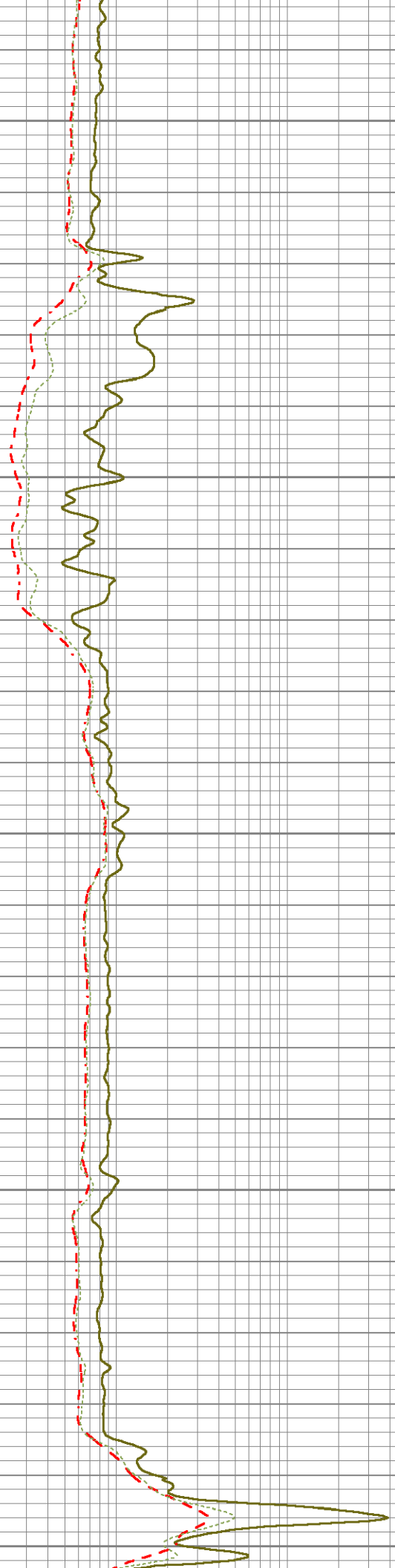
2.49

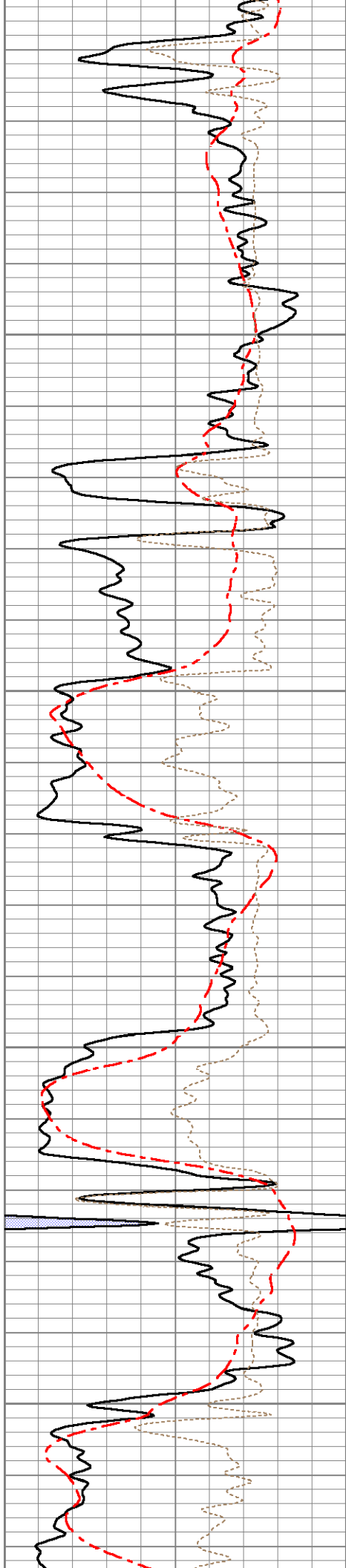
2.73

2.44

2.63

2.74





2250

2300

2350

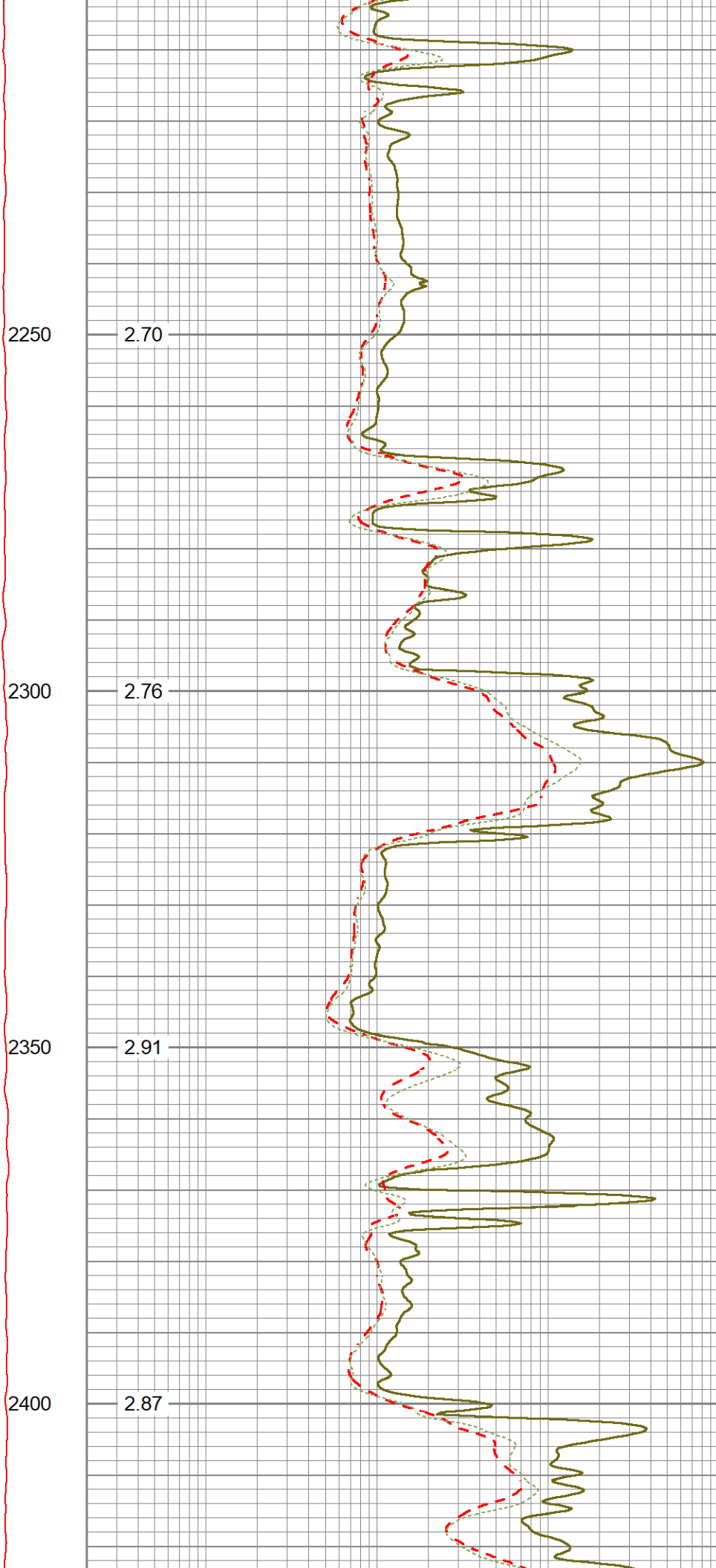
2400

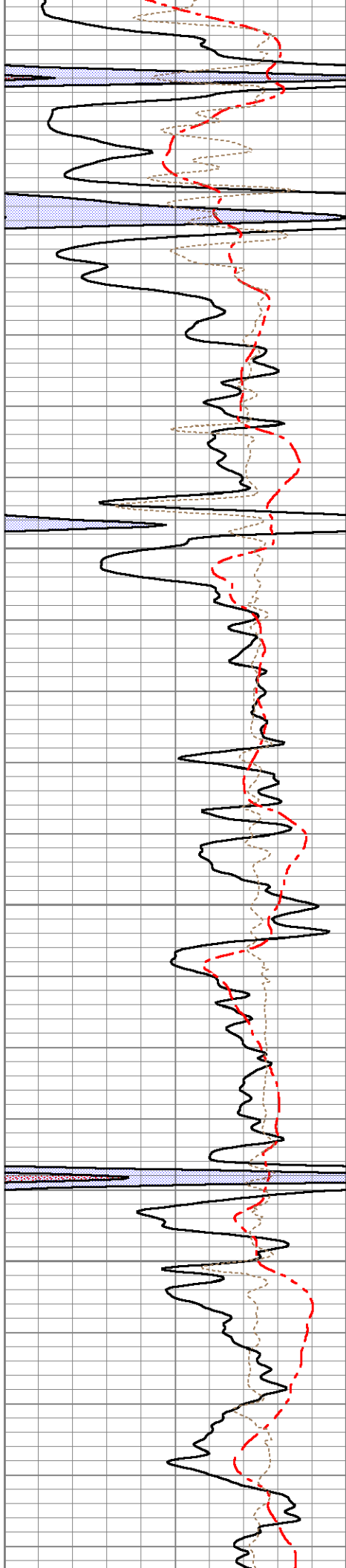
2.70

2.76

2.91

2.87





2450

2500

2550

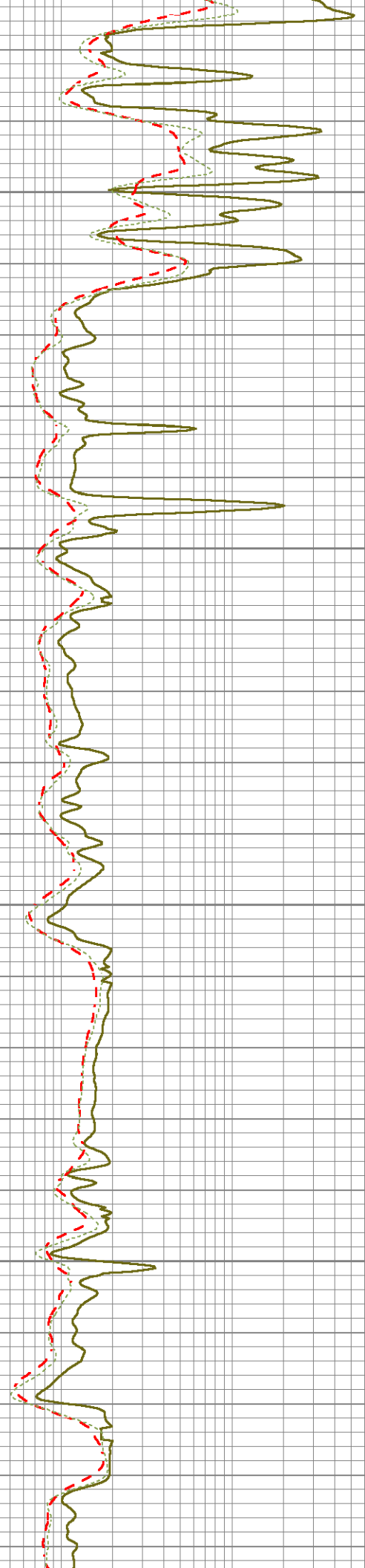
2600

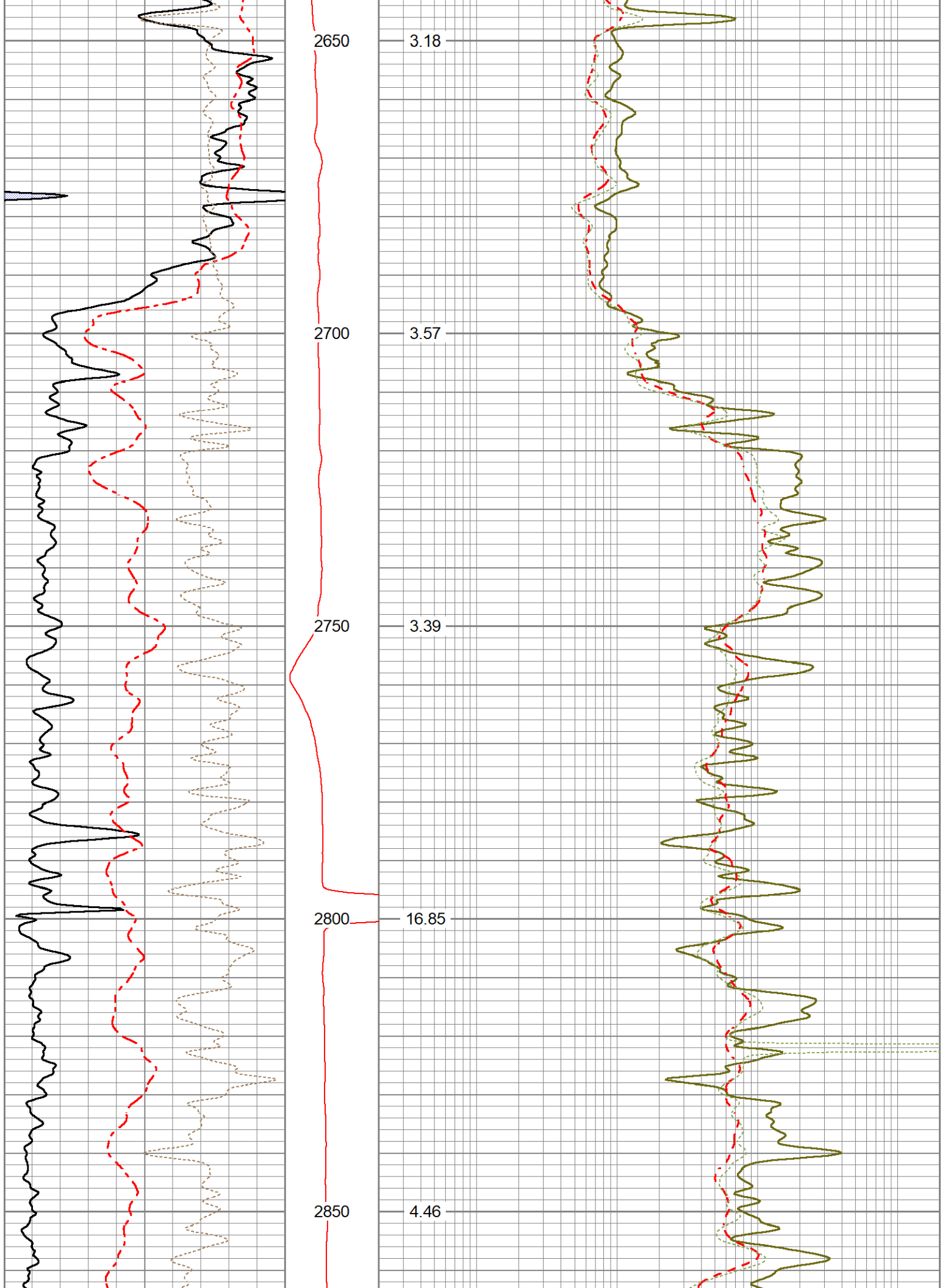
2.88

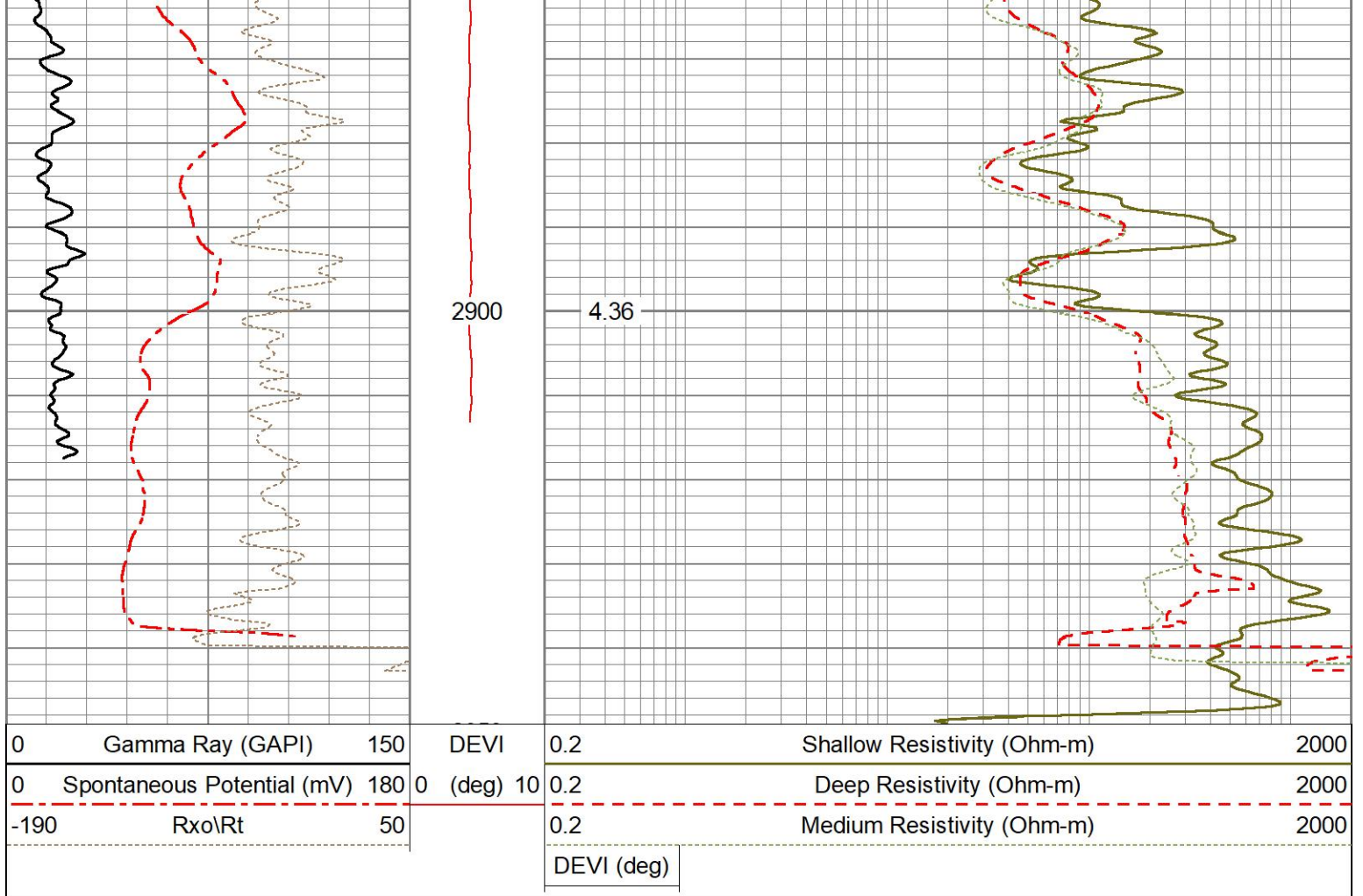
2.91

3.38

0.43







Sensor	Offset (ft)	Schematic	Description	Length (ft)	O.D. (in)	Weight (lb)	
ACCY	31.04		ADMYR_TELEMETRY-OSAGE_01 (Refurb01) Admyr Telemetry With Gr, Deviation, ADC board and Pulses Board in it.	3.69	3.25	53.00	
ACCX	31.04						
GR	29.86						
FRAMES	28.54		MICRO_DIG-Osage (01) Digital Microlog	7.21	5.13	137.00	
SSTAT	28.54						
PSTAT	28.54						
ASTAT	28.54						
MI	23.00		DIL-G (5375) Gearhart	21.33	4.00	290.00	
MN	23.00						
MCAL	22.00						
ASTAT2	21.33						
SP	10.92		RLL3	1.65			
CILD	10.92						
CILM	7.00	TR Mon	0.00				

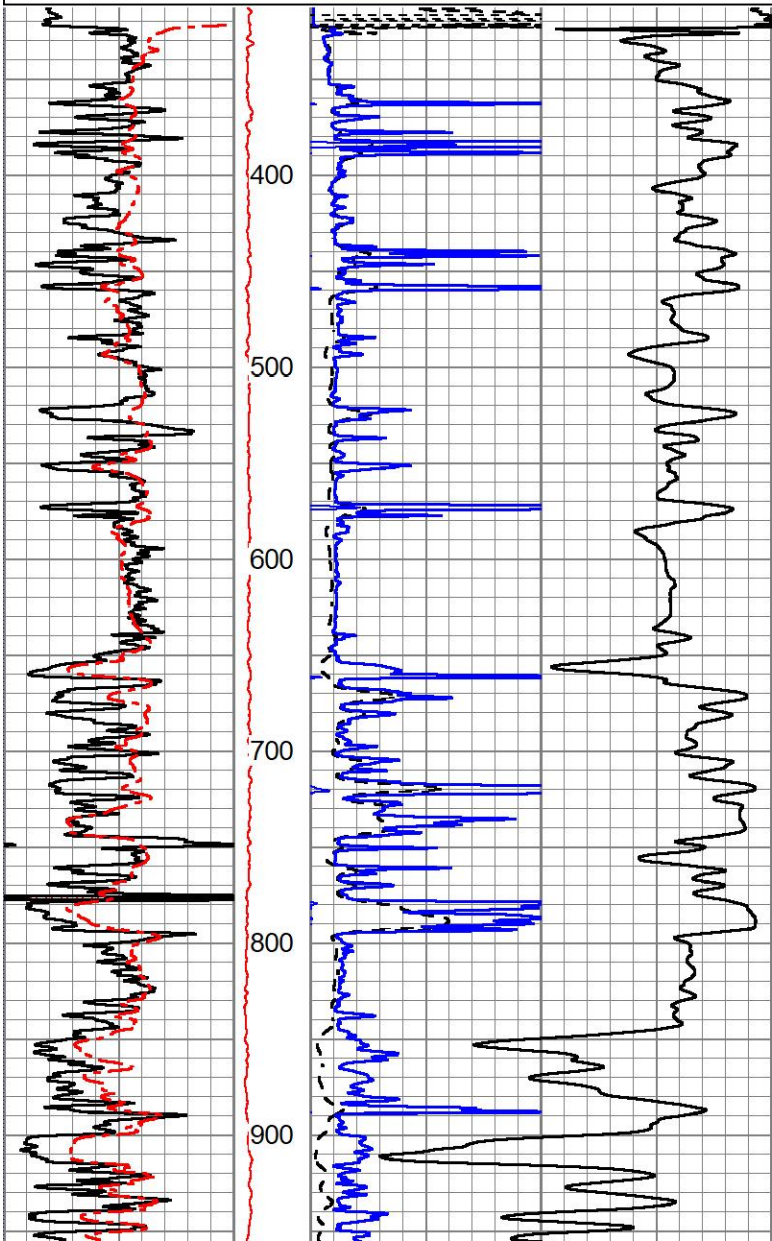
Dataset: ow2-8993 clapp oil.db: field/well/run1/pass2
 Total length: 32.23 ft
 Total weight: 480.00 lb
 O.D.: 5.13 in

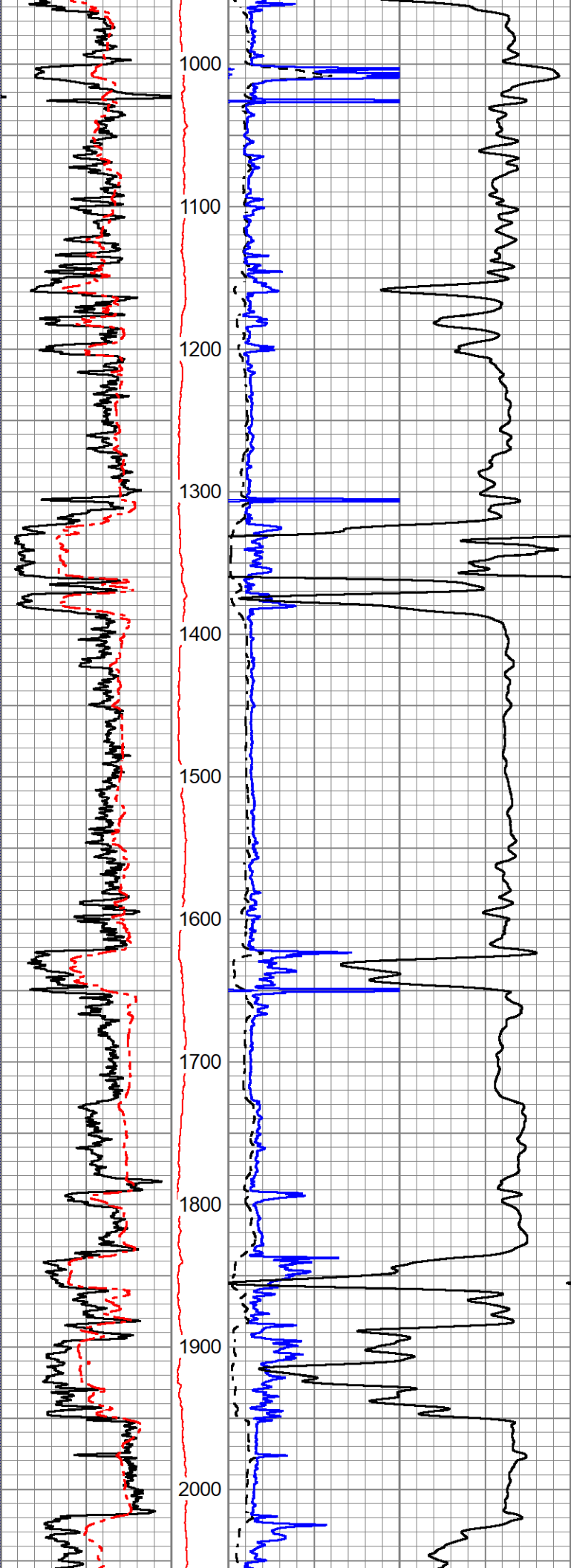


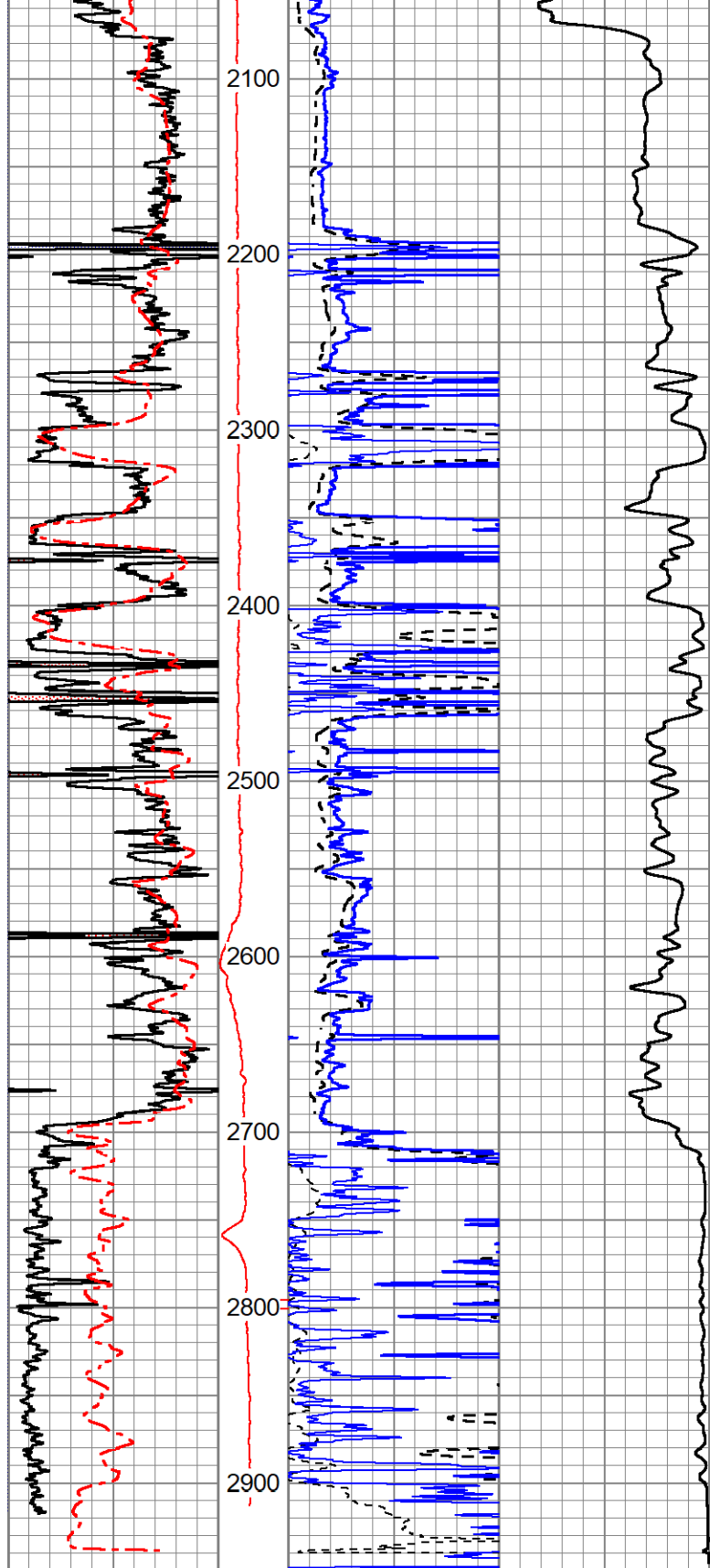
1" INDUCTION LOG

Database File ow2-8993 clapp oil.db
 Dataset Pathname pass2.4
 Presentation Format mmdil1
 Dataset Creation Tue Oct 19 00:16:53 2021
 Charted by Depth in Feet scaled 1:1200

0	GR (GAPI) 150	DEVI	1000	CILD (mmho/m)	0
0	SP (mV) 180	(deg)		RILD	
		0 10		(Ohm-m) 50	
				RLL3	
				(Ohm-m) 50	







0	GR (GAPI)150	DEVI	1000	CILD (mmho/m)	0
0	SP (mV) 180	(deg)		RILD	
0		0 10	0	(Ohm-m) 50	
				RLL3	
			0	(Ohm-m) 50	