



MICRO LOG

| | | | | |
|------------------------------|---------------------------|--|----------------|-------------------|
| Company | PALOMINO PETROLEUM | | Other Services | CDNL |
| Well | FOR A FEW DOLLARS MORE #1 | | D/L | |
| Field | WC | | Elevation | K B 2943 |
| County | NESS | | Ground Level | K B 11' AGL |
| State | KS | | Elevation | 2532' |
| Location: | 1270' FNL & 716' FWL | | SEC 22 | TWP 18S |
| API #: | 15 135 28134 | | RGE | 25W |
| Remnant Datum | KB | | Ground Level | KB |
| Log Measured From | KB | | Ground Level | KB |
| Drilling Measured From | KB | | Ground Level | KB |
| Date | 12/14/21 | | Q.L. | 2532 |
| Run Number | TWO | | | |
| Depth Logger | 4627 | | | |
| Bottom Logged Interval | 3625 | | | |
| Bottom Logged Interval | 3625 | | | |
| Casein Driller | 8 918' @ 20' | | | |
| Casein Logger | 220 | | | |
| Bit Size | 7 7/8" | | | |
| Type Fluid in Hole | Chemical | | | Chlwater@1000 ppm |
| Density / Viscosity | 9.260 | | | |
| pH / Fluid Loss | 10.0/5.8 | | | |
| Source of Sample | PH | | | |
| Run @ Mass | 1.2 @ 60deg | | | |
| Run @ Temp | 1.4 @ 60deg | | | |
| Source of Run / Rate | 1.4 @ 60deg | | | |
| Run @ BHT | 67 @ 107deg | | | |
| Calculated | 4.15 P.M. | | | |
| Time Circulation Stopped | 6:00 P.M. | | | |
| Time Logger on Station | 10:07deg | | | |
| Maximum Recorded Temperature | 1695 | | | |
| Equipment Number | Hays, KS | | | |
| Recorded By | GUS FERNANDEZ | | | |
| Witnessed By | RYAN SBB | | | |

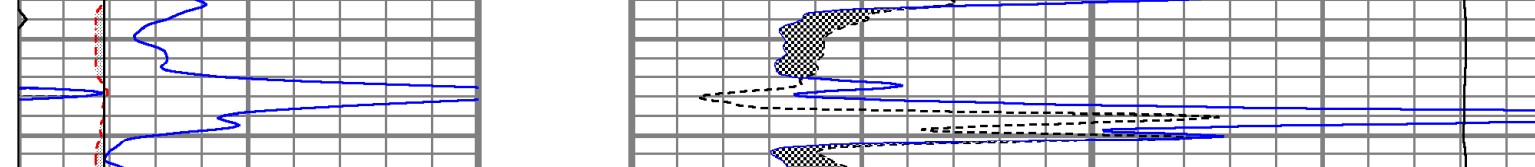
<<< Fold Here >>>

All interpretations are opinions based on inferences from electrical or other measurements and we cannot and do not guarantee the accuracy or correctness of any interpretation, and we shall not, except in the case of gross or willful negligence on our part, be liable or responsible for any loss, costs, damages, or expenses incurred or sustained by anyone resulting from any interpretation made by any of our officers, agents or employees. These interpretations are also subject to our general terms and conditions set out in our current Price Schedule.

Comments

WEST OF NESS TO J.RD. 1.5 NORTH,
WEST INTO THROUGH PASTURE

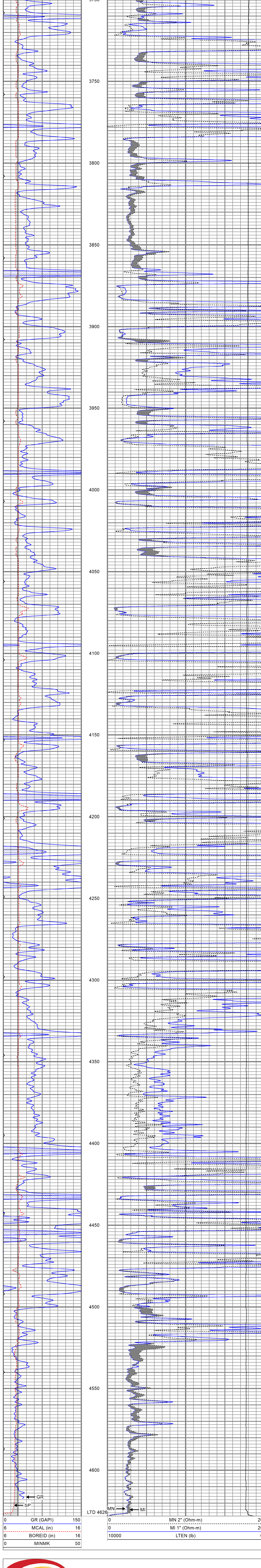
Thank You for using Gemini Wireline LLC
785-625-1182



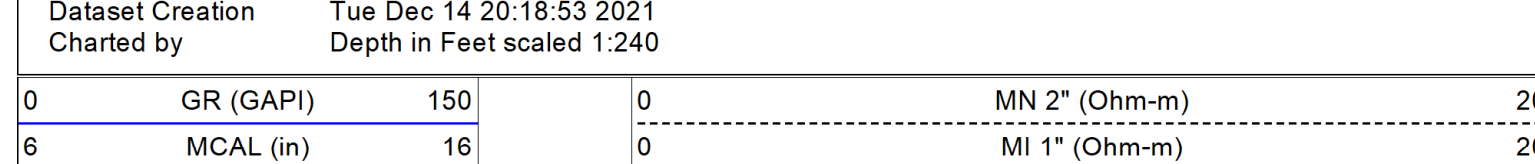
MAIN PASS

| | | |
|---------------------|-----------------------------|--|
| Database File | ppforafewdollarsmore#1oh.db | |
| Dataset Pathname | pass5 | |
| Presentation Format | kml | |
| Dataset Creation | Tue Dec 14 20:26:24 2021 | |
| Charted by | Depth in Feet scaled 1:240 | |

| | | | | | |
|---|-------------|-----|-------|---------------|----|
| 0 | GR (GAPI) | 150 | 0 | MN 2" (Ohm-m) | 20 |
| 6 | MCAL (in) | 16 | 0 | MI 1" (Ohm-m) | 20 |
| 6 | BOREID (in) | 16 | 10000 | LTEN (lb) | 0 |
| 0 | MINMK | 50 | | | |



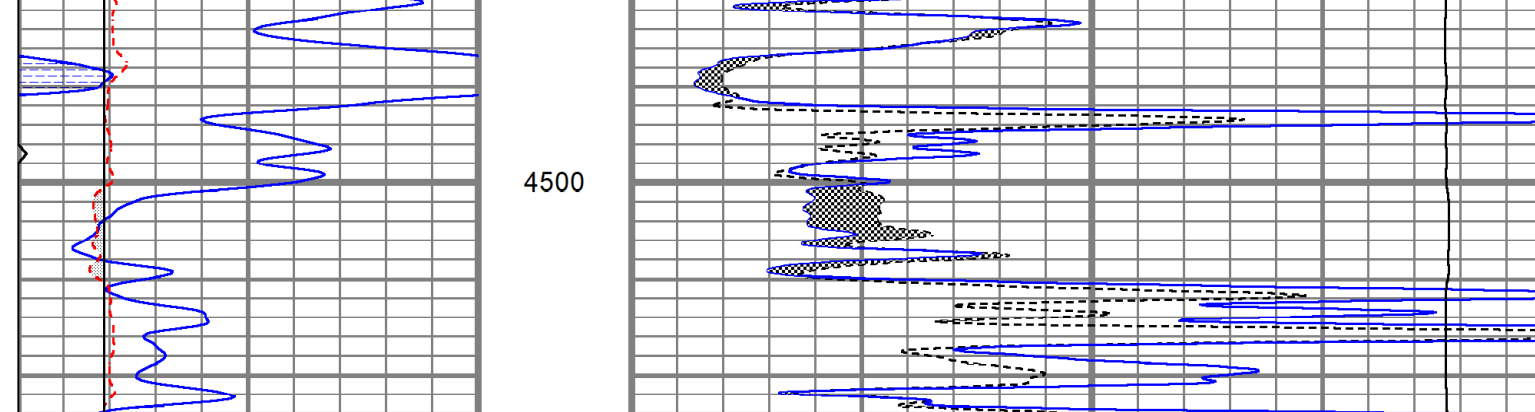
| | | | | | |
|---|-------------|-----|-------|---------------|----|
| 0 | GR (GAPI) | 150 | 0 | MN 2" (Ohm-m) | 20 |
| 6 | MCAL (in) | 16 | 0 | MI 1" (Ohm-m) | 20 |
| 6 | BOREID (in) | 16 | 10000 | LTEN (lb) | 0 |
| 0 | MINMK | 50 | | | |



REPEAT SECTION

| | | |
|---------------------|-----------------------------|--|
| Database File | ppforafewdollarsmore#1oh.db | |
| Dataset Pathname | pass4 | |
| Presentation Format | kml | |
| Dataset Creation | Tue Dec 14 20:18:53 2021 | |
| Charted by | Depth in Feet scaled 1:240 | |

| | | | | | |
|---|-------------|-----|-------|---------------|----|
| 0 | GR (GAPI) | 150 | 0 | MN 2" (Ohm-m) | 20 |
| 6 | MCAL (in) | 16 | 0 | MI 1" (Ohm-m) | 20 |
| 6 | BOREID (in) | 16 | 10000 | LTEN (lb) | 0 |
| 0 | MINMK | 50 | | | |



| | | | | | |
|---|-------------|-----|-------|---------------|----|
| 0 | GR (GAPI) | 150 | 0 | MN 2" (Ohm-m) | 20 |
| 6 | MCAL (in) | 16 | 0 | MI 1" (Ohm-m) | 20 |
| 6 | BOREID (in) | 16 | 10000 | LTEN (lb) | 0 |
| 0 | MINMK | 50 | | | |

Calibration Report

| | | |
|------------------|-----------------------------|--|
| Database File | ppforafewdollarsmore#1oh.db | |
| Dataset Pathname | pass4 | |
| Dataset Creation | Tue Dec 14 20:18:53 2021 | |

Microlog Calibration Report

| | | | | | | | | |
|---------------|------------|--------|--------------------------|---------|---------|-------|---------|--------|
| Serial-Model: | 1600-Pengo | | Tue Dec 14 20:18:25 2021 | | | | | |
| Performed: | | | | | | | | |
| Readings | | | References | Results | | | | |
| Zero | Cal | | Zero | Cal | m | b | | |
| Normal | -0.0257 | 0.4899 | V | 0.0000 | 10.0000 | Ohm-m | 19.3934 | 0.4991 |
| Inverse | -0.0154 | 0.6414 | V | 0.0000 | 10.0000 | Ohm-m | 15.2262 | 0.2345 |
| Caliper | 3.2319 | 6.4483 | V | 8.0000 | 15.0000 | in | 2.1764 | 0.9662 |

Gamma Ray Calibration Report

| | | |
|---------------------|-------------------------|----------|
| Serial Number: | 2001 | |
| Tool Model: | OH | |
| Performed: | Sat Sep 4 22:48:39 2021 | |
| Calibrator Value: | 1.0 | GAPI |
| Background Reading: | 0.0 | cps |
| Calibrator Reading: | 1.0 | cps |
| Sensitivity: | 0.8000 | GAPI/cps |