

SONIC
LOG



Company DARRAH OIL COMPANY, LLC.

Well PANTHER RANCH #1-30

Field

County CHASE State KANSAS

Location: API #: 15-017-20928-0000

596' FNL & 542' FEL

SEC 30 TWP 19S RGE 6E

Permanent Datum GROUND LEVEL Elevation 1436
Log Measured From KELLY BUSHING 9' A.G.L.
Drilling Measured From KELLY BUSHING

Other Services
CDL/CNL/PE
DIL/MEL
Elevation
K.B. 1445
D.F. 1443
G.L. 1436

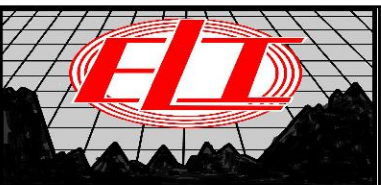
Date	9/12/21
Run Number	TWO
Depth Driller	2399
Depth Logger	2398
Bottom Logged Interval	2388
Top Log Interval	200
Casing Driller	8 5/8" @ 239
Casing Logger	239
Bit Size	7 7/8
Type Fluid in Hole	CHEMICAL MUD
Density / Viscosity	NA/47
pH / Fluid Loss	NA/8.8
Source of Sample	FLOWLINE
Rm @ Meas. Temp	1.50 @ 92F
Rmf @ Meas. Temp	1.12 @ 92F
Rmc @ Meas. Temp	1.80 @ 92F
Source of Rmf / Rmc	MEASUREMENT
Rm @ BHT	1.35 @ 102F
Time Circulation Stopped	2 HOURS
Time Logger on Bottom	////
Maximum Recorded Temperature	102F
Equipment Number	3802
Location	HAYS, KANSAS
Recorded By	JASON CAPPELLUCCI
Witnessed By	ROGER MARTIN

<<< Fold Here >>>

All interpretations are opinions based on inferences from electrical or other measurements and we cannot and do not guarantee the accuracy or correctness of any interpretation, and we shall not, except in the case of gross or willful negligence on our part, be liable or responsible for any loss, costs, damages, or expenses incurred or sustained by anyone resulting from any interpretation made by any of our officers, agents or employees. These interpretations are also subject to our general terms and conditions set out in our current Price Schedule.

Comments

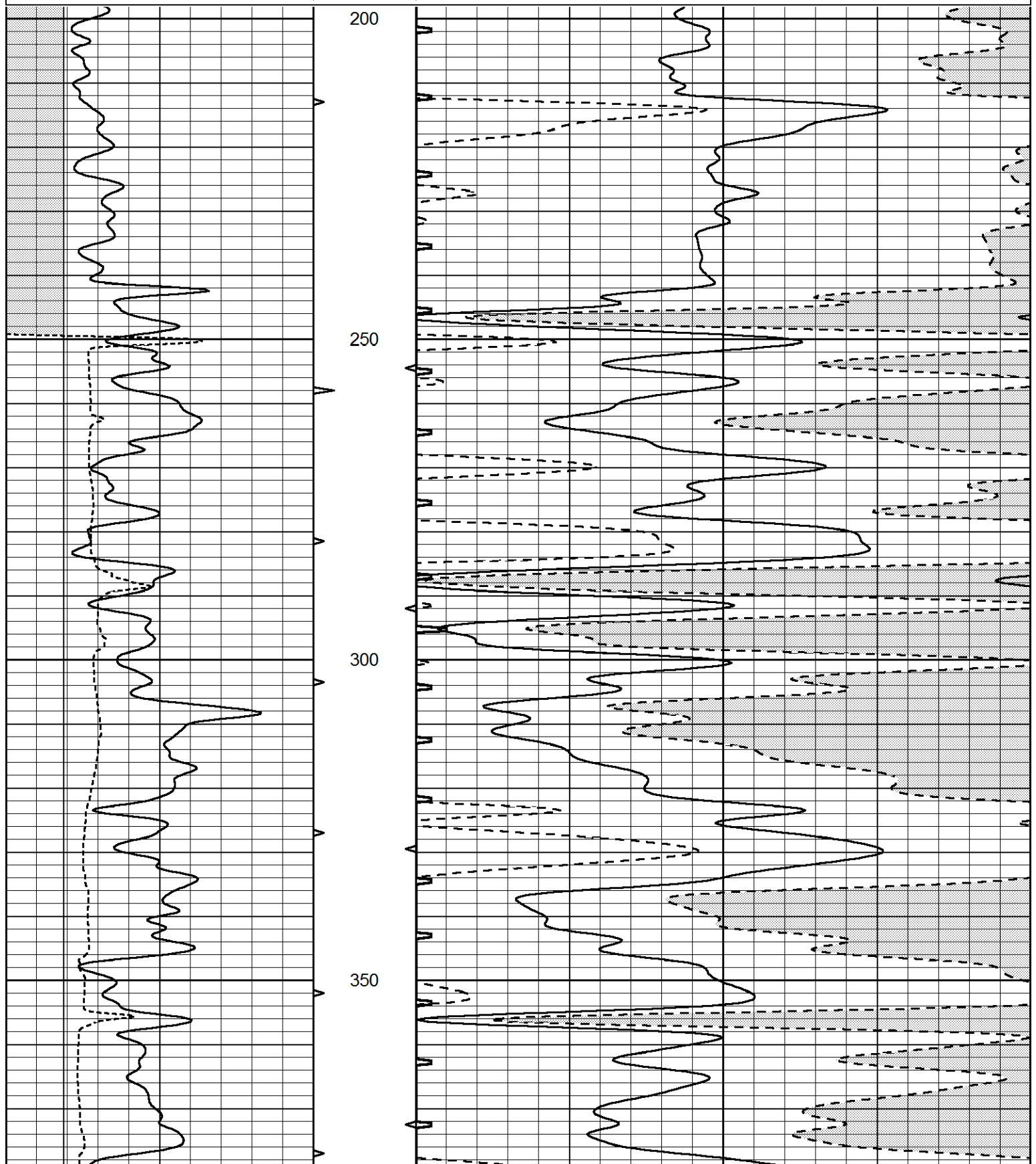
THANK YOU FOR USING ELI WIRELINE SERVICES, HAYS, KS. (785) 628-6395
DIRECTIONS
MARION, KS. - 13 EAST TO RD. C - 1 NORTH - WEST INTO

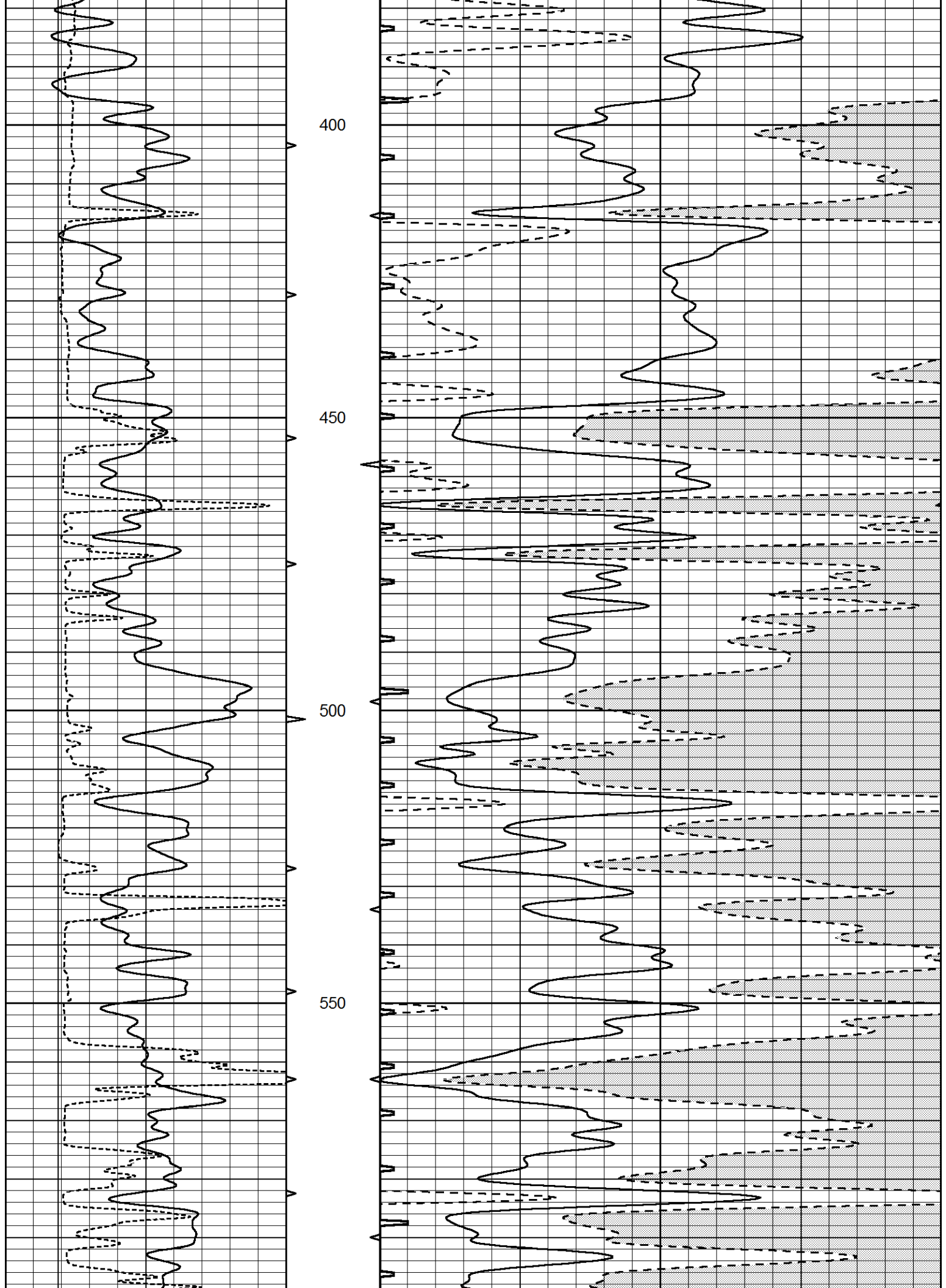


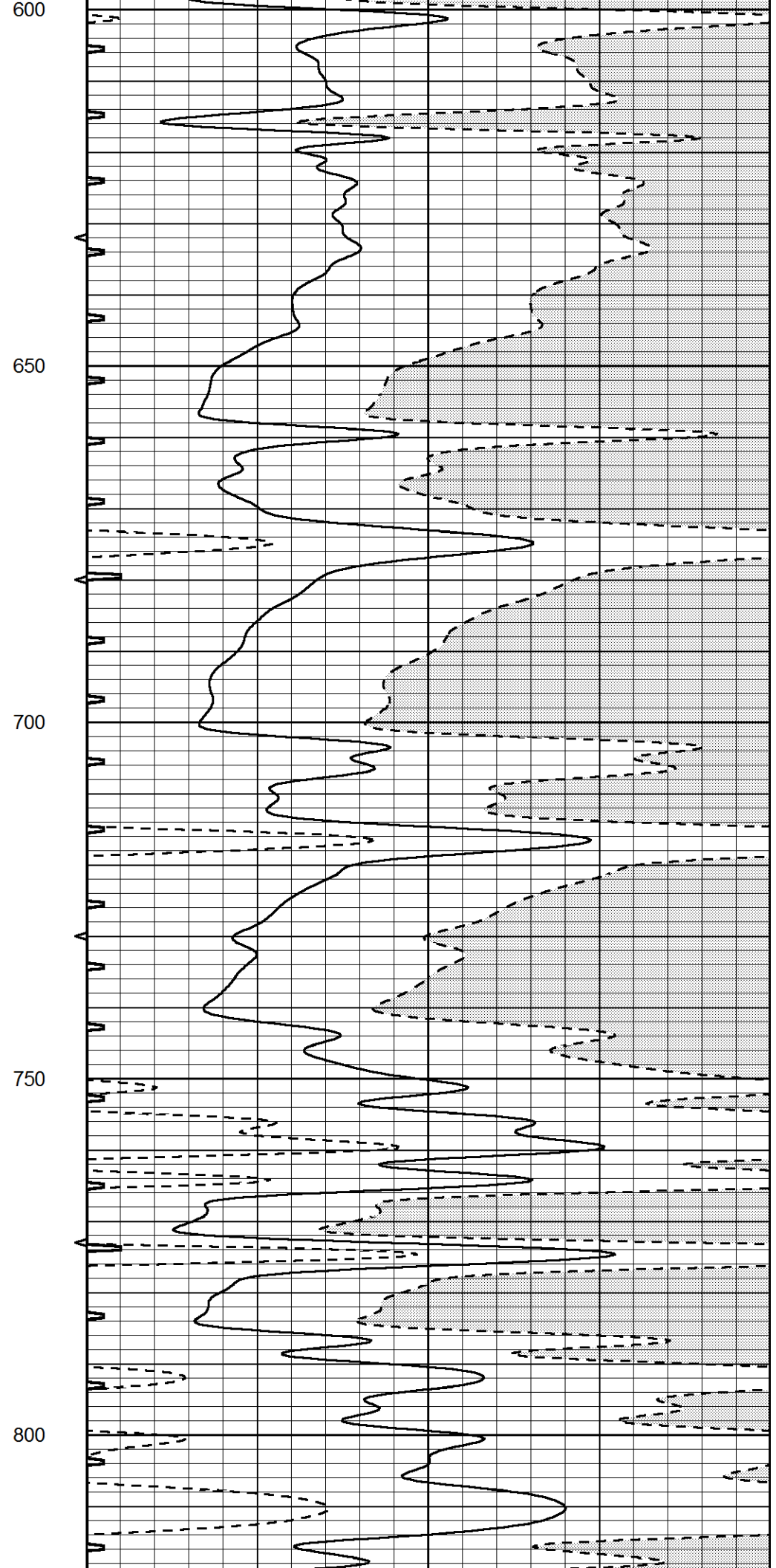
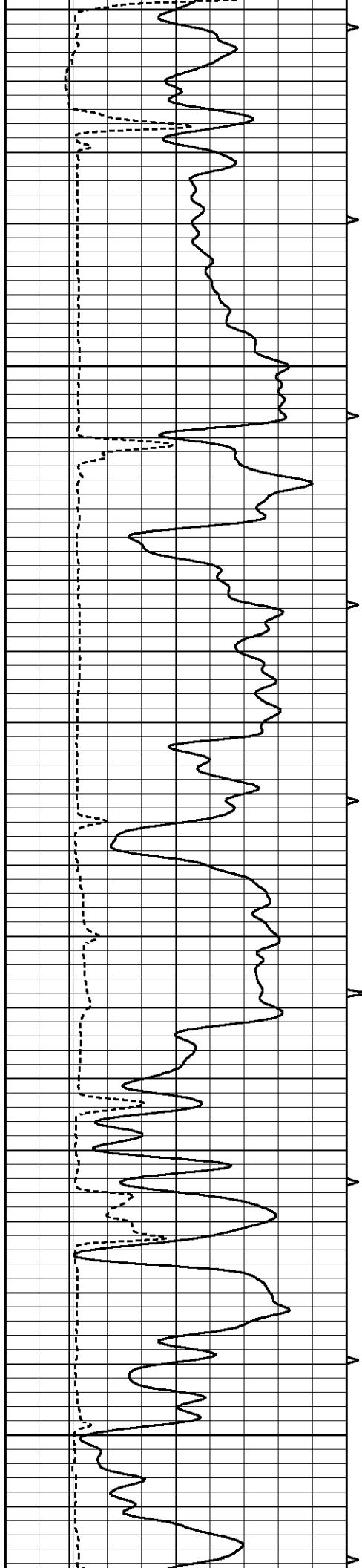
MAIN SECTION

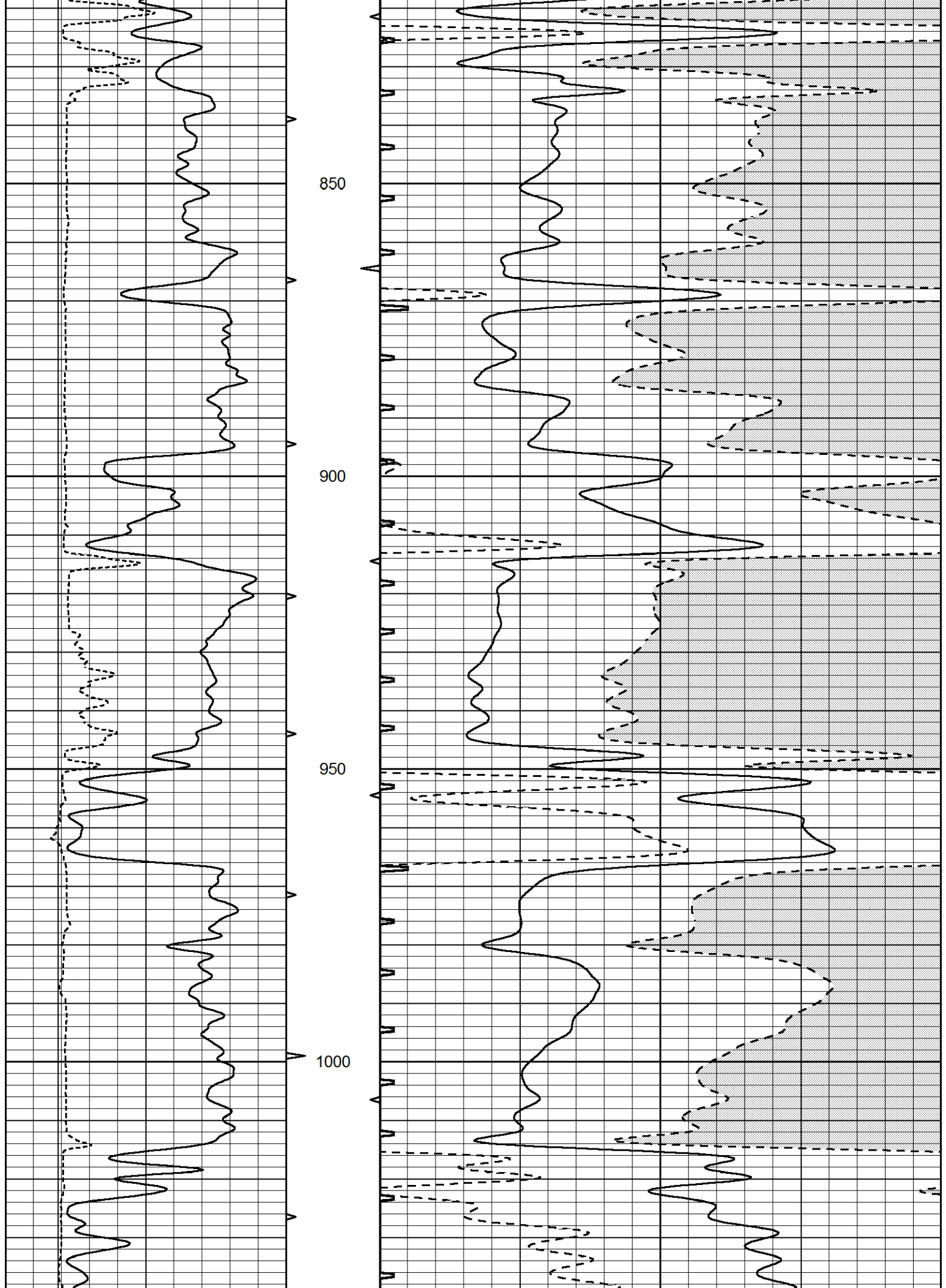
Database File 5853pe.db
 Dataset Pathname pass6.3
 Presentation Format _slt
 Dataset Creation Sun Sep 12 21:58:35 2021
 Charted by Depth in Feet scaled 1:240

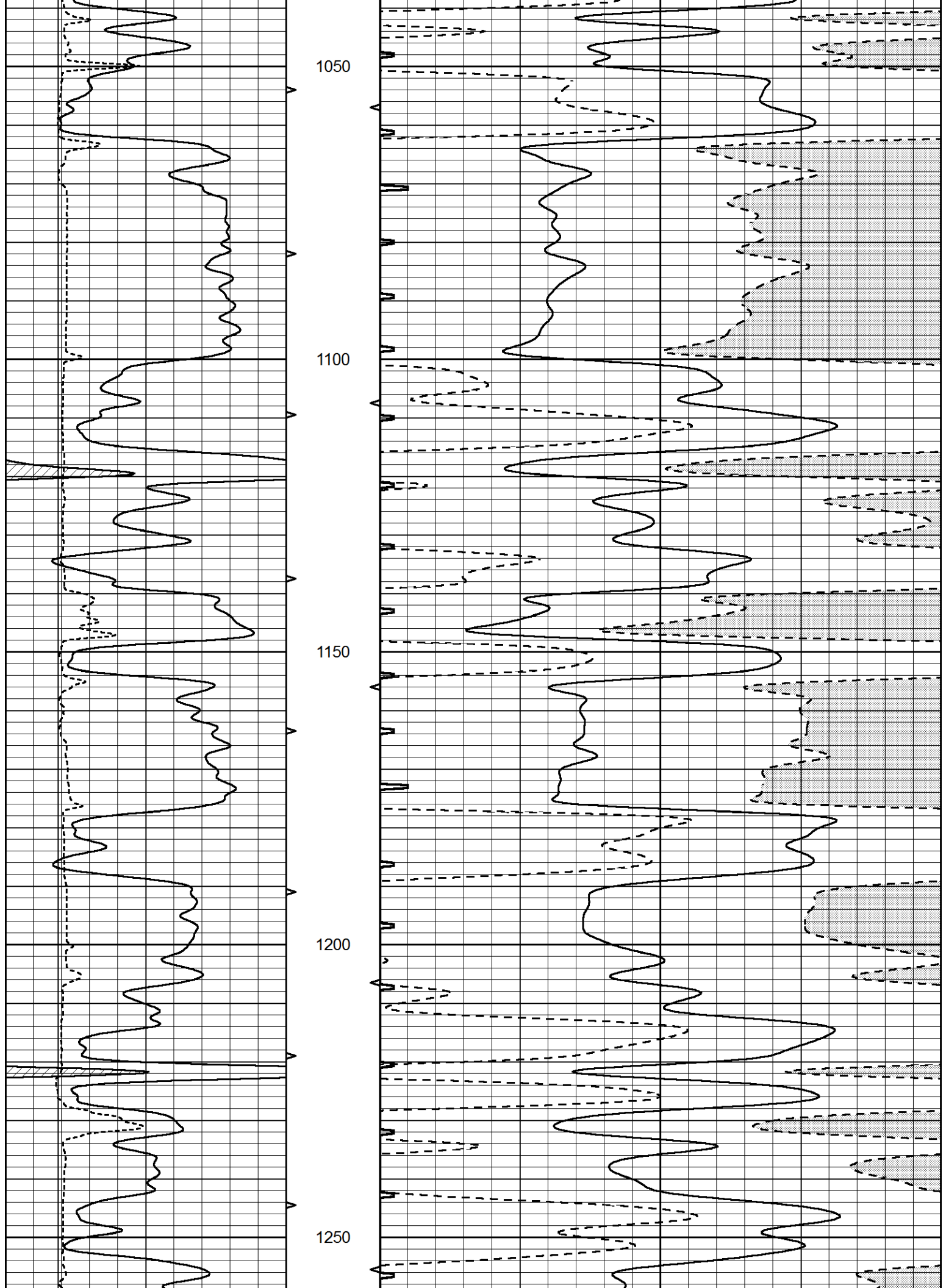
0	GAMMA RAY (GAPI)	150	ABHV	140	DELTA TIME (usec/ft)	40	
6	CALIPER (in)	16	10 (ft3)	0	30	SONIC POROSITY (pu)	-10
			TBHV	0	ITT (msec)	20	
			0 (ft3)	10			

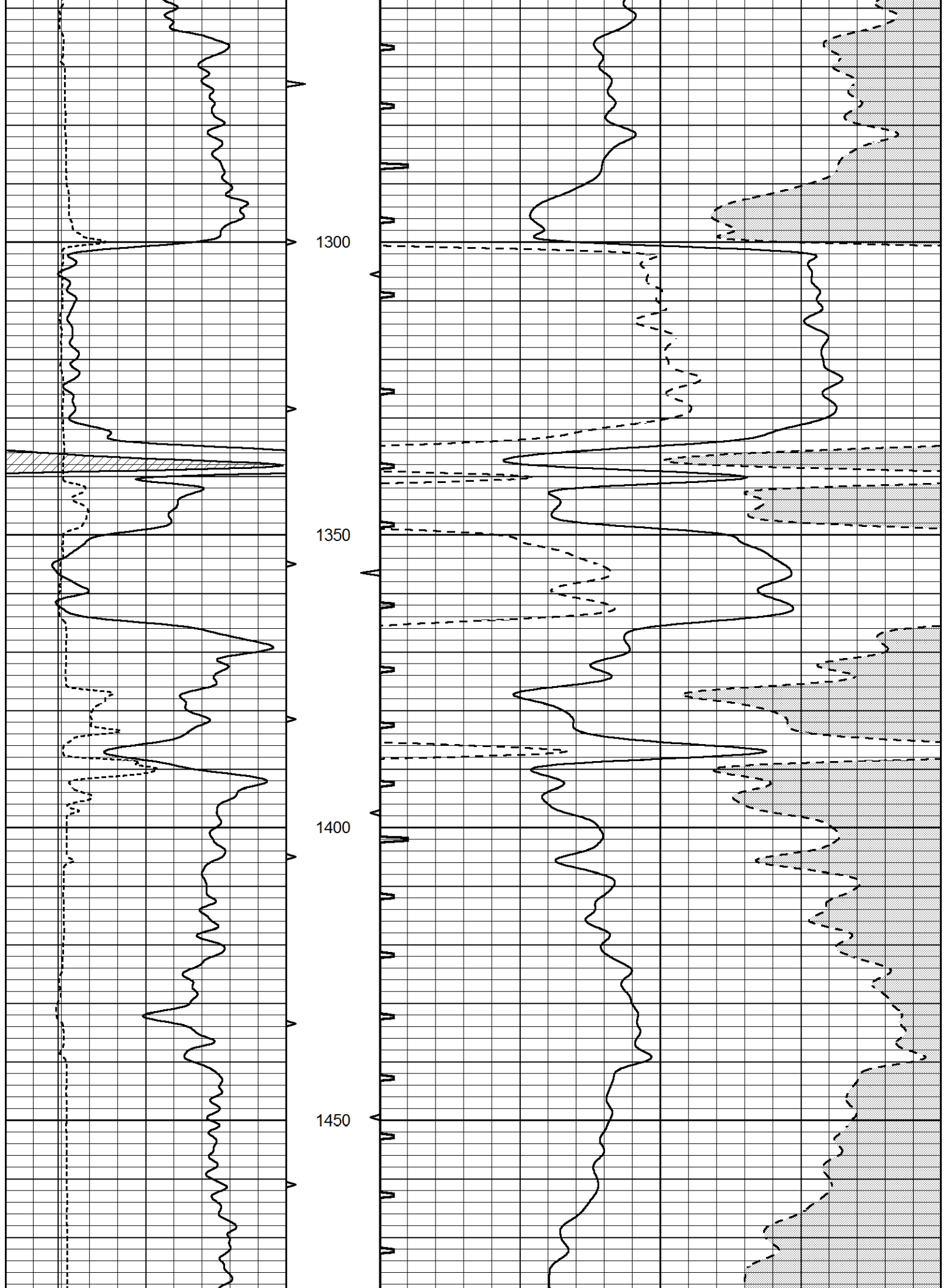


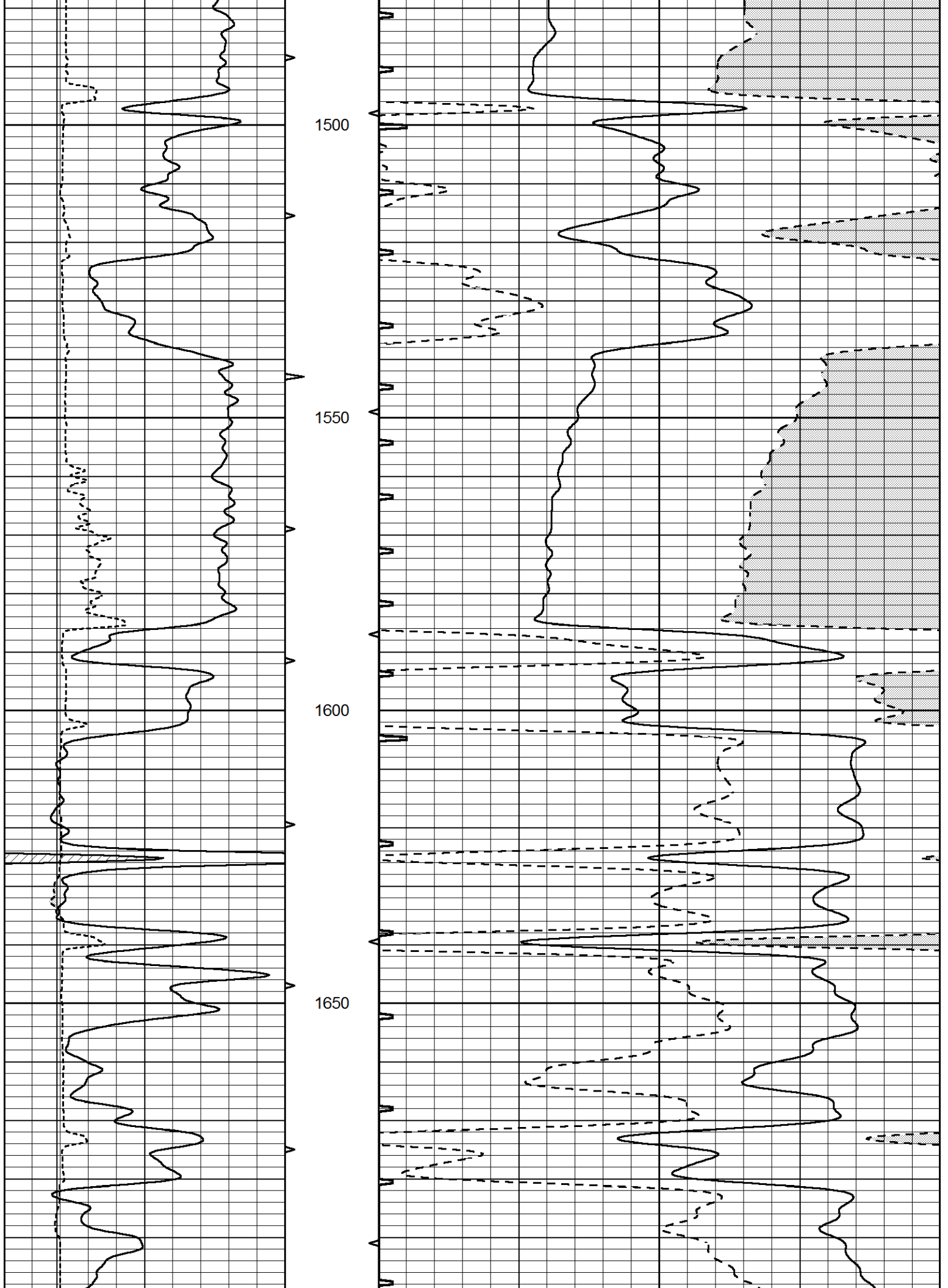


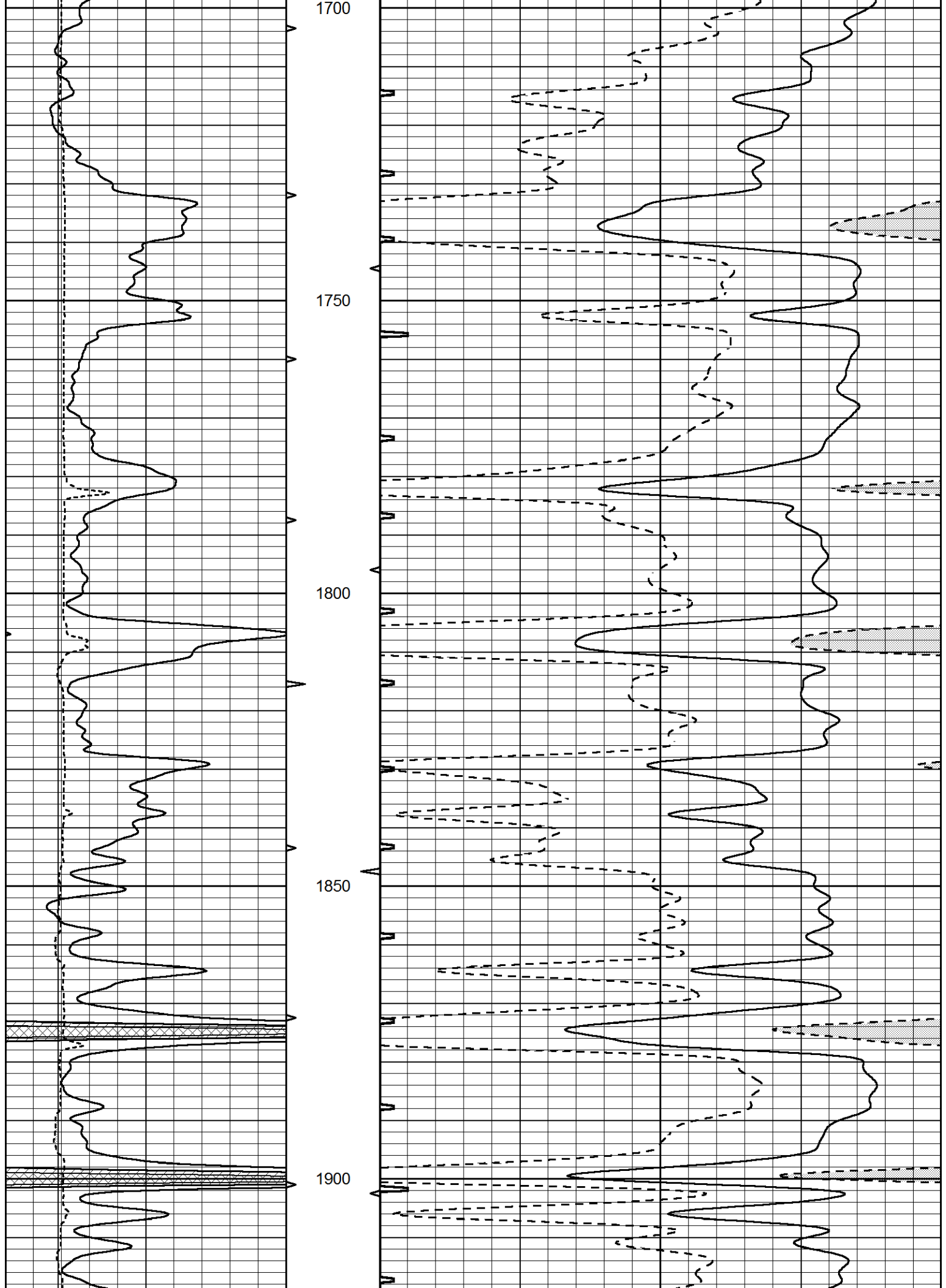




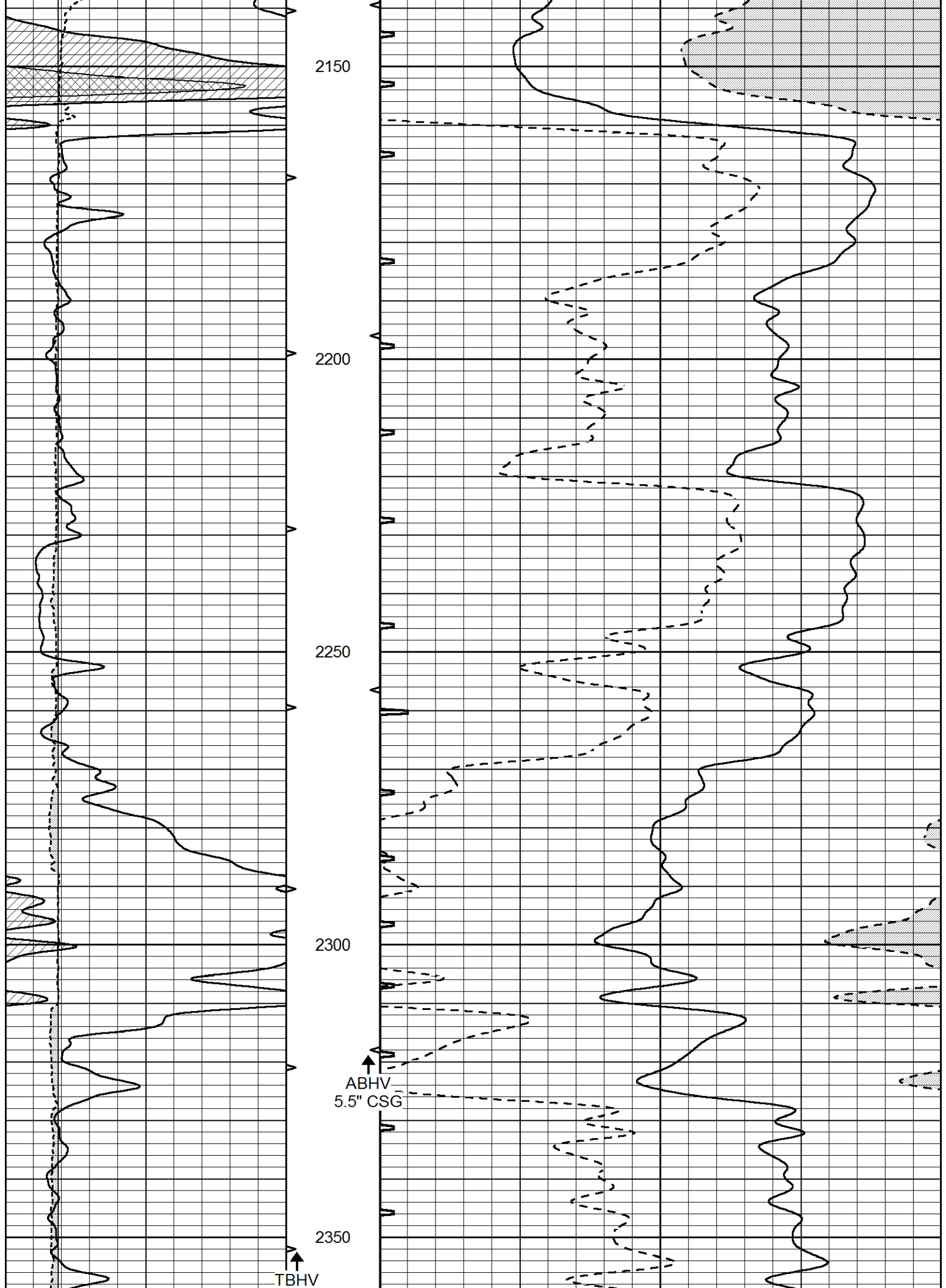


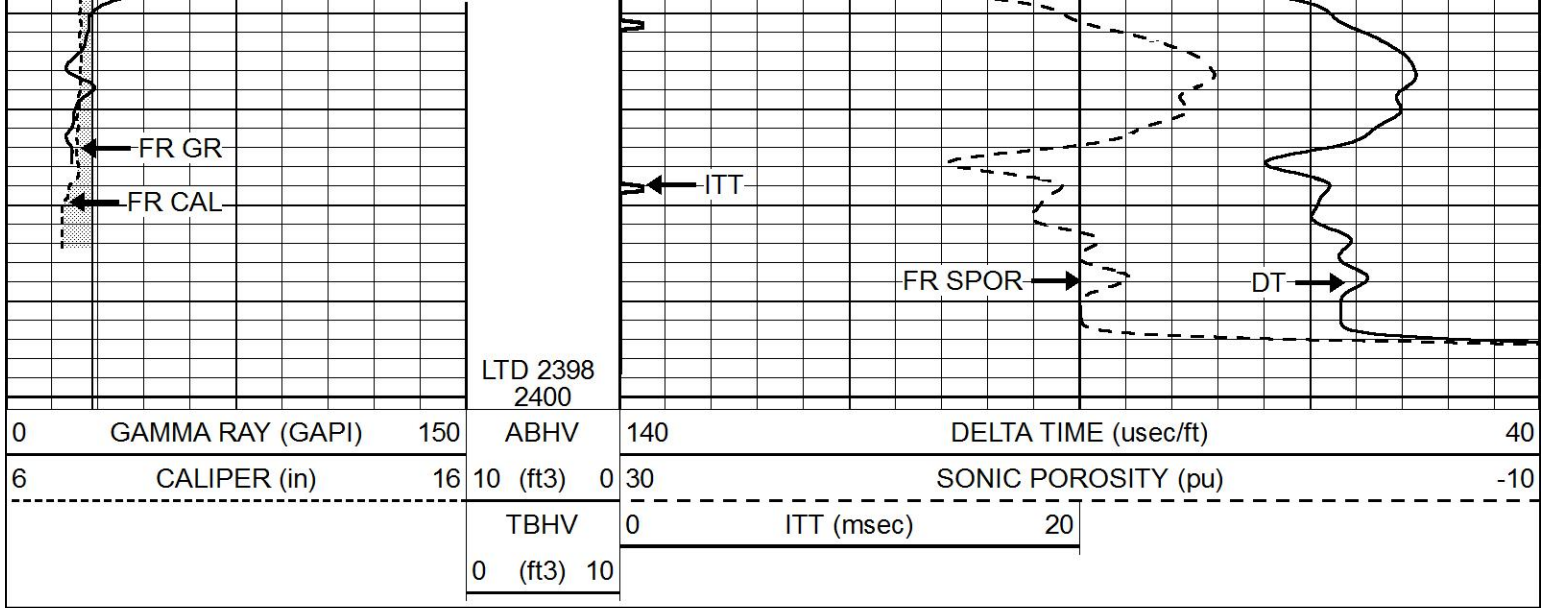








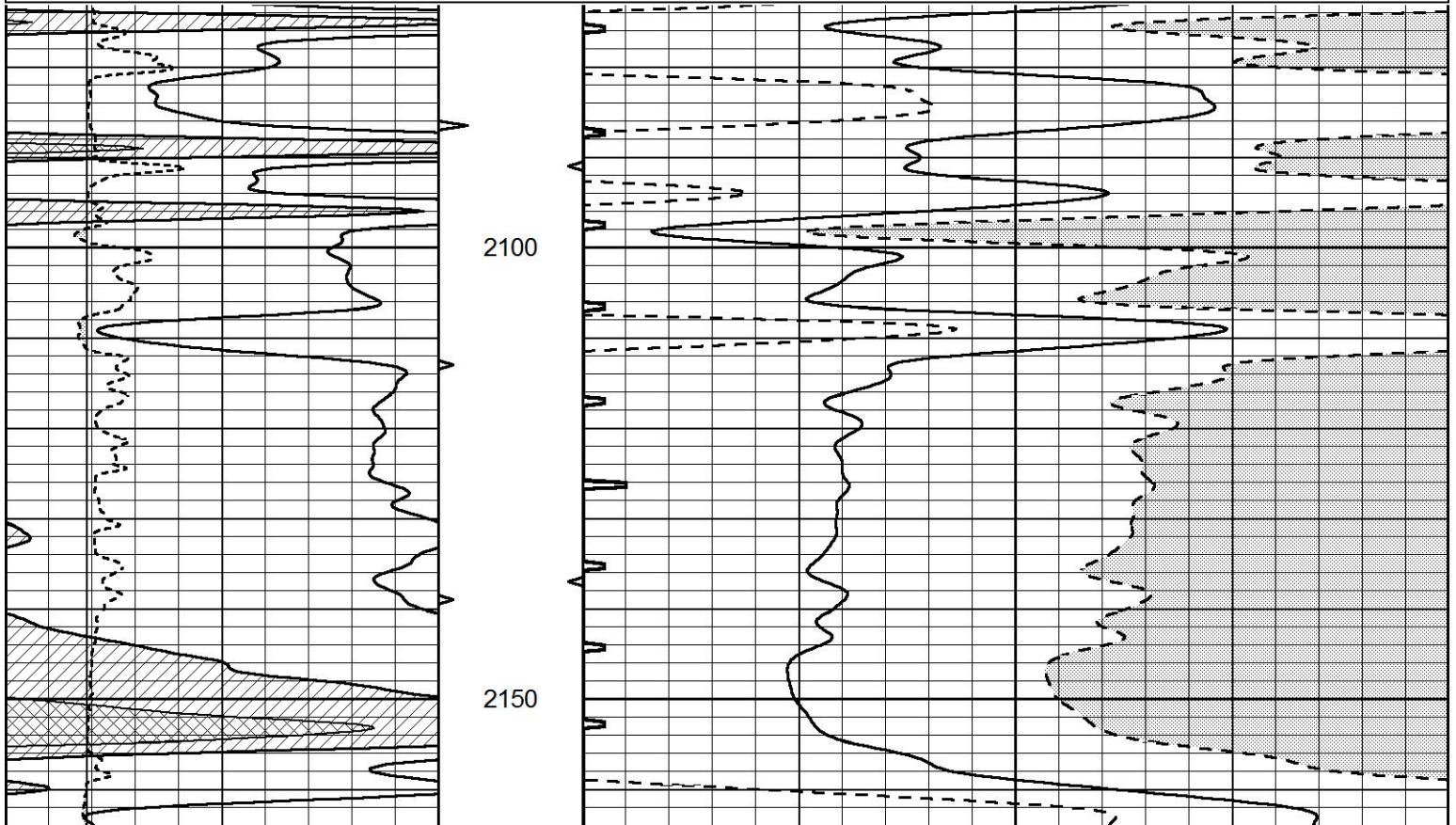


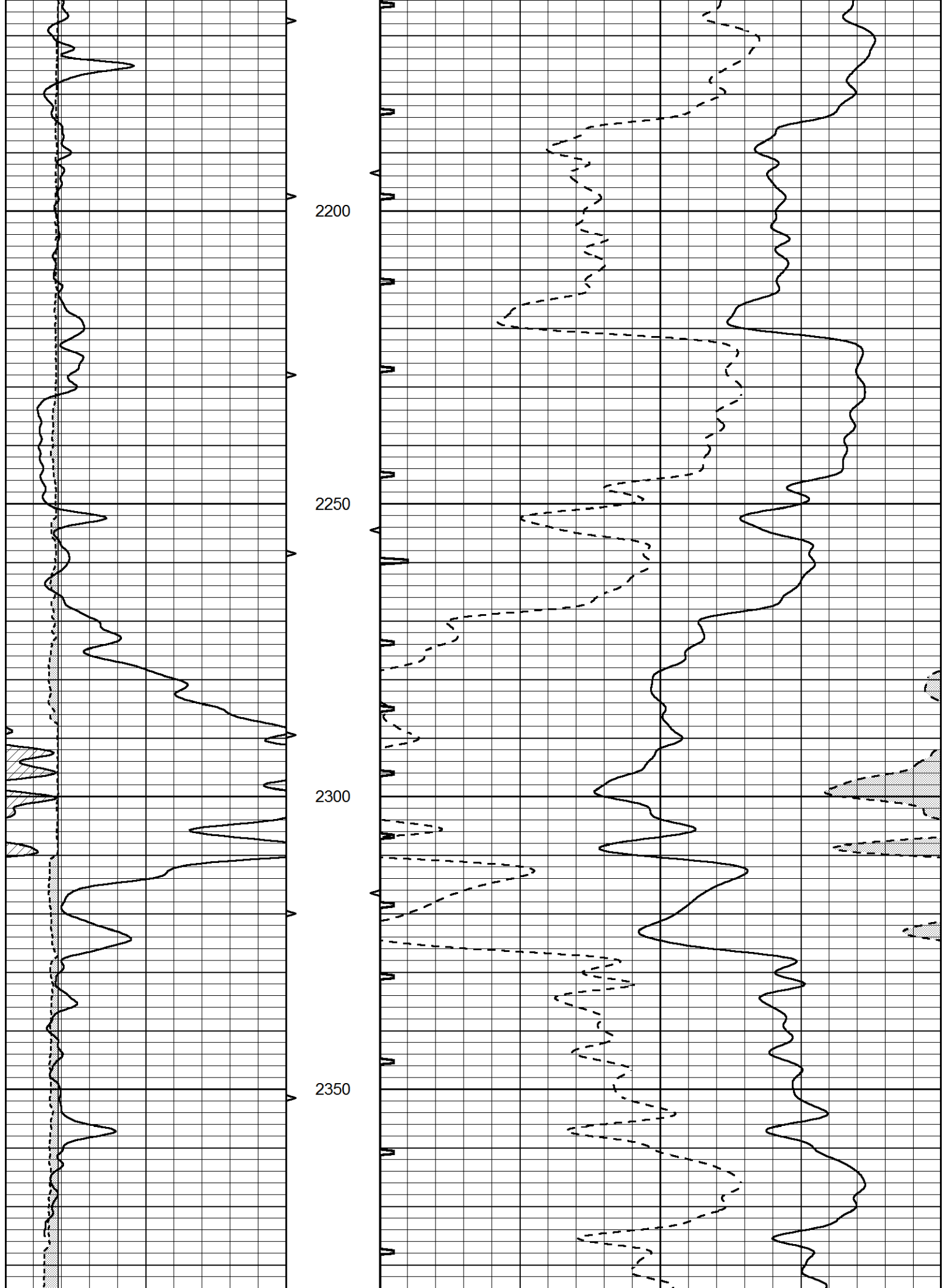


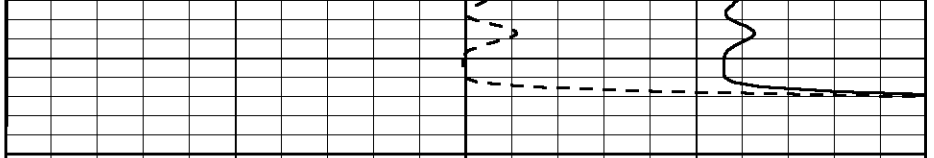
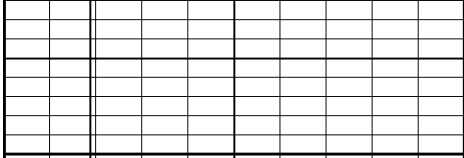
REPEAT SECTION

Database File 5853pe.db
 Dataset Pathname pass5.1
 Presentation Format _slt
 Dataset Creation Sun Sep 12 21:37:19 2021
 Charted by Depth in Feet scaled 1:240

0	GAMMA RAY (GAPI)	150	ABHV	140	DELTA TIME (usec/ft)	40
6	CALIPER (in)	16	10 (ft3) 0	30	SONIC POROSITY (pu)	-10
			TBHV	0	ITT (msec)	20
			0 (ft3) 10			







		2400			
0	GAMMA RAY (GAPI)	150	ABHV	140	DELTA TIME (usec/ft) 40
6	CALIPER (in)	16	10 (ft3) 0	30	SONIC POROSITY (pu) -10
		TBHV		0 ITT (msec) 20	
		0 (ft3) 10			