

MICRO LOG



Company DARRAH OIL COMPANY, LLC.

Well PANTHER RANCH #1-30

Field  
County CHASE State KANSAS

Location: API #: 15-017-20928-0000

596' FNL & 542' FEL

Permanent Datum GROUND LEVEL Elevation 1436

Log Measured From KELLY BUSHING 9' A.G.L

Drilling Measured From KELLY BUSHING

Other Services  
CDL/CNL/PE  
DIL/SON

Elevation

K.B. 1445

D.F. 1443

G.L. 1436

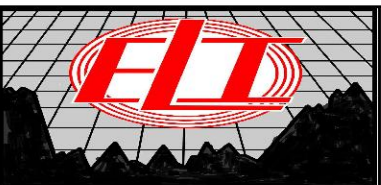
Date	9/12/21		
Run Number	TWO		
Depth Driller	2399		
Depth Logger	2398		
Bottom Logged Interval	2380		
Top Log Interval	1200	650 - 500	
Casing Driller	8 5/8" @ 239		
Casing Logger	239		
Bit Size	7 7/8		
Type Fluid in Hole	CHEMICAL MUD		
Density / Viscosity	NA/47		
pH / Fluid Loss	NA/8.8		
Source of Sample	FLOWLINE		
Rm @ Meas. Temp	1.50 @ 92F		
Rmf @ Meas. Temp	1.12 @ 92F		
Rmc @ Meas. Temp	1.80 @ 92F		
Source of Rmf / Rmc	MEASUREMENT		
Rm @ BHT	1.35 @ 102F		
Time Circulation Stopped	2 HOURS		
Time Logger on Bottom	////		
Maximum Recorded Temperature	102F		
Equipment Number	3802		
Location	HAYS, KANSAS		
Recorded By	JASON CAPPELLUCCI		
Witnessed By	ROGER MARTIN		

<<< Fold Here >>>

All interpretations are opinions based on inferences from electrical or other measurements and we cannot and do not guarantee the accuracy or correctness of any interpretation, and we shall not, except in the case of gross or willful negligence on our part, be liable or responsible for any loss, costs, damages, or expenses incurred or sustained by anyone resulting from any interpretation made by any of our officers, agents or employees. These interpretations are also subject to our general terms and conditions set out in our current Price Schedule.

Comments

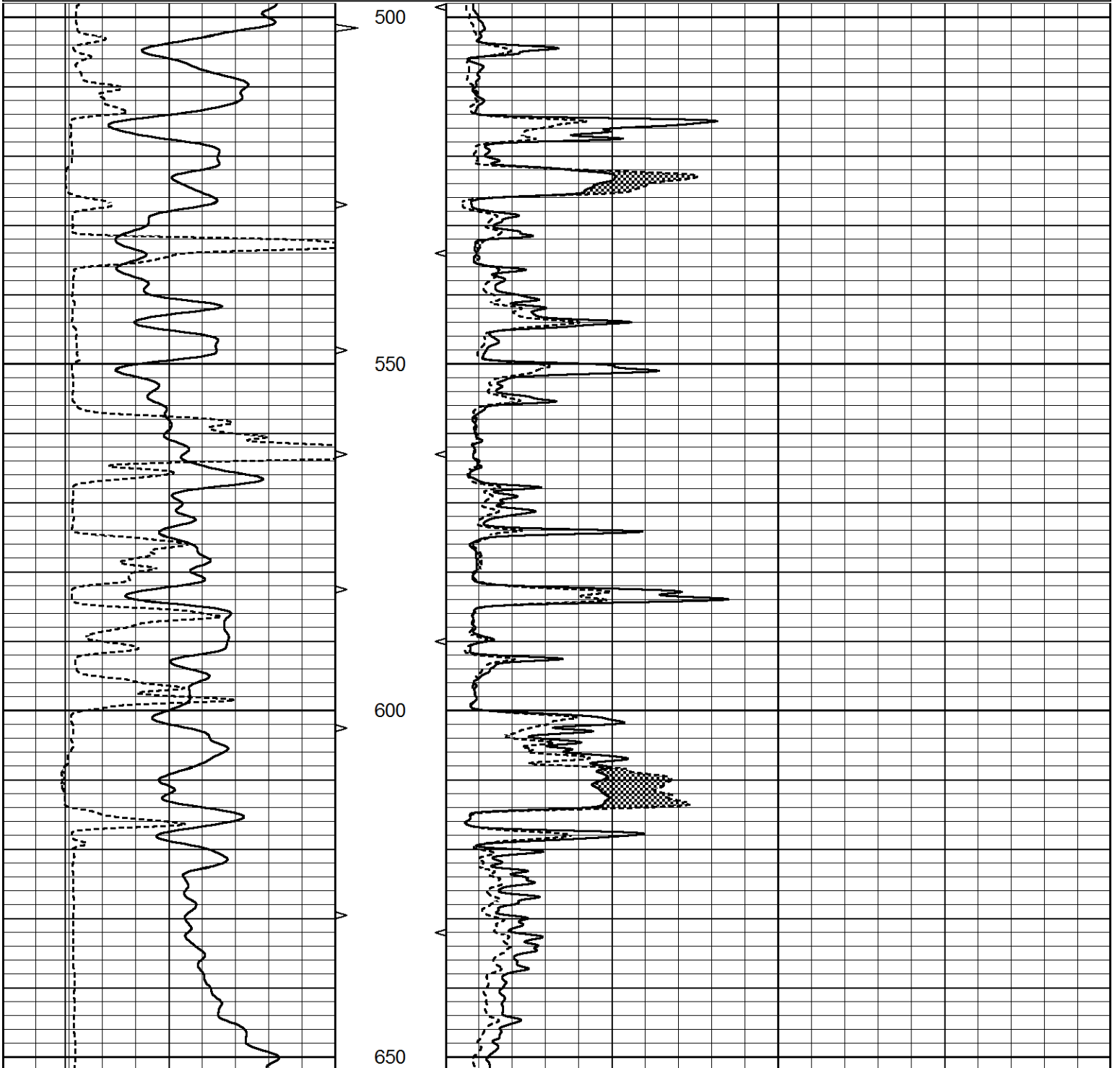
THANK YOU FOR USING ELI WIRELINE SERVICES, HAYS, KS. ( 785 ) 628-6395  
DIRECTIONS  
MARION, KS. - 13 EAST TO RD. C - 1 NORTH - WEST INTO



UPPER SECTION

Database File 5853pe.db  
 Dataset Pathname pass6.2  
 Presentation Format \_micro  
 Dataset Creation Sun Sep 12 21:45:58 2021  
 Charted by Depth in Feet scaled 1:240

0	GAMMA RAY (GAPI)	150	ABHV	0	MEL1.5 (Ohm-m)	40
6	CALIPER (in)	16	10 (ft3)	0	MEL2.0 (Ohm-m)	40
			TBHV			
			0 (ft3)	10		



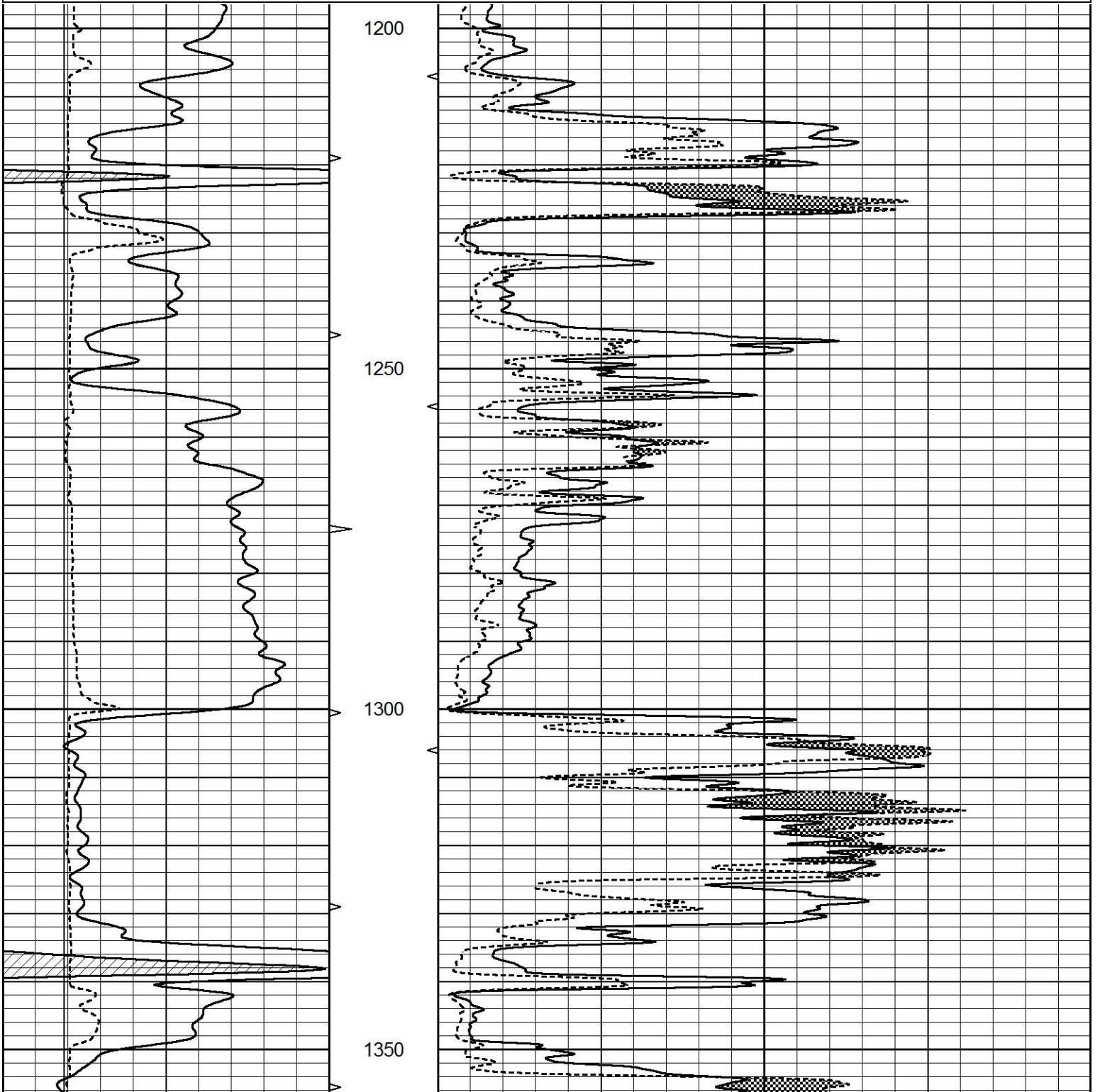
0	GAMMA RAY (GAPI)	150	ABHV	0	MEL1.5 (Ohm-m)	40
6	CALIPER (in)	16	10 (ft3)	0	MEL2.0 (Ohm-m)	40
			TBHV			
			0 (ft3)	10		

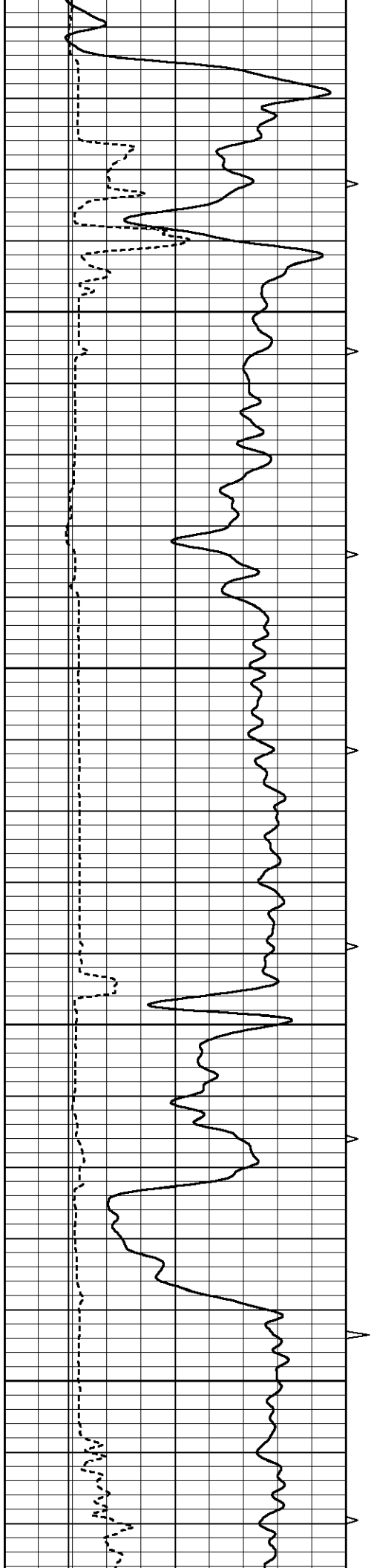


# MAIN SECTION

Database File 5853pe.db  
 Dataset Pathname pass6.1  
 Presentation Format \_micro  
 Dataset Creation Sun Sep 12 21:40:21 2021  
 Charted by Depth in Feet scaled 1:240

0	GAMMA RAY (GAPI)	150	ABHV	0	MEL1.5 (Ohm-m)	40
6	CALIPER (in)	16	10 (ft3)	0	MEL2.0 (Ohm-m)	40
			TBHV			
			0 (ft3)	10		



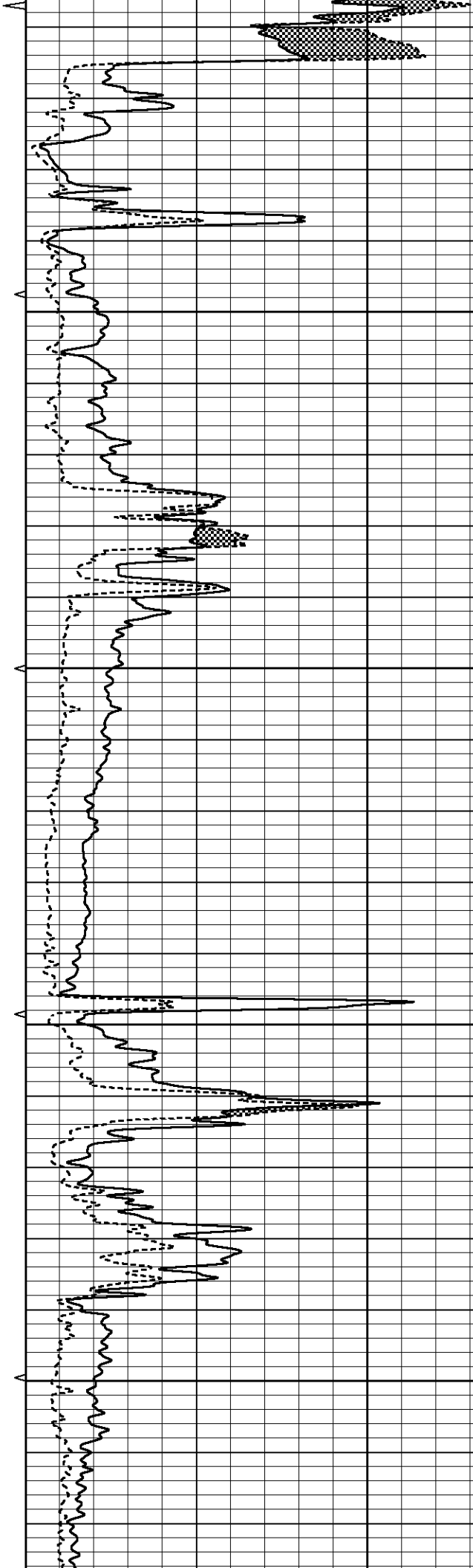


1400

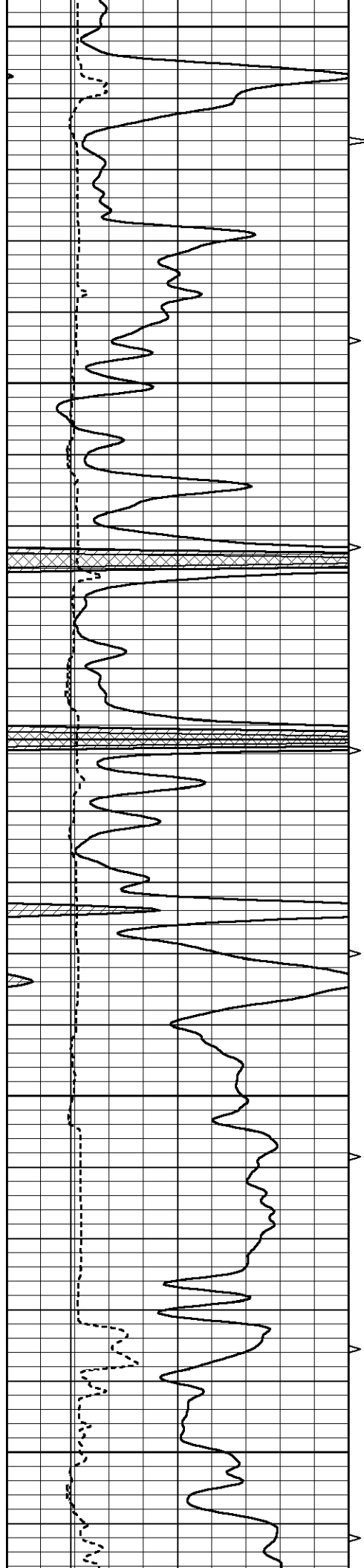
1450

1500

1550







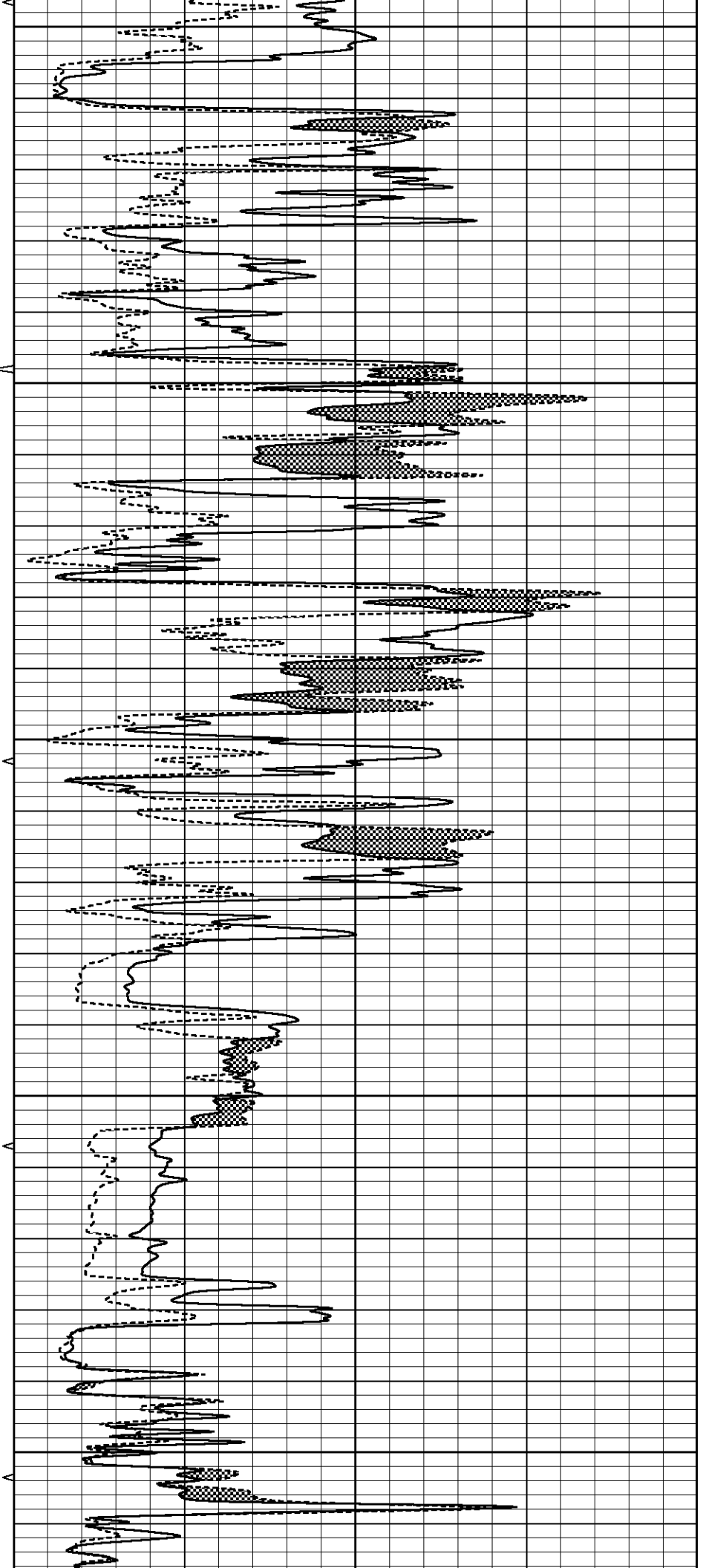
1800

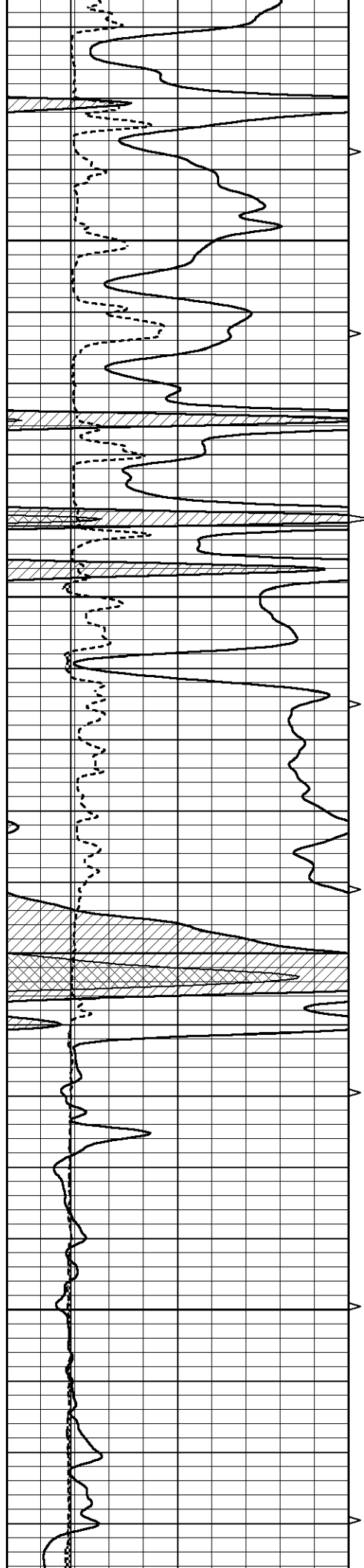
1850

1900

1950

2000



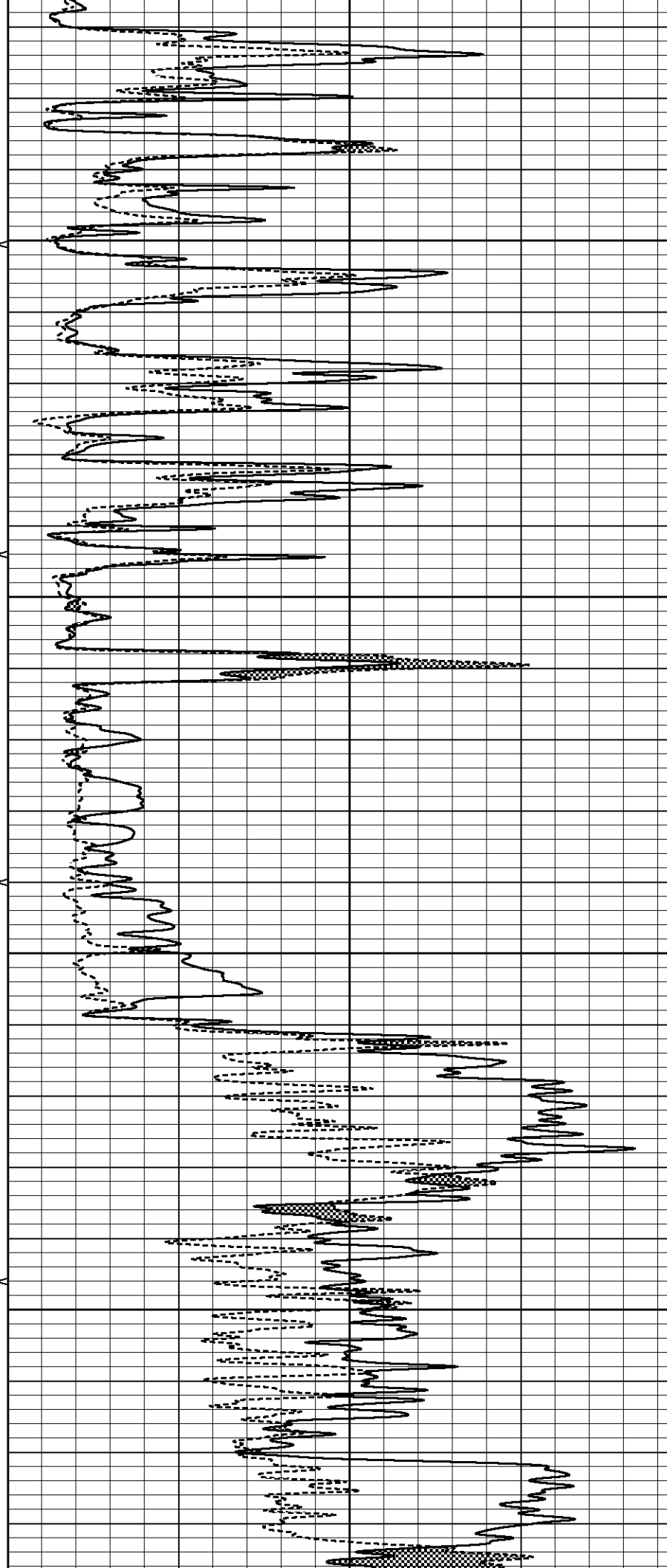


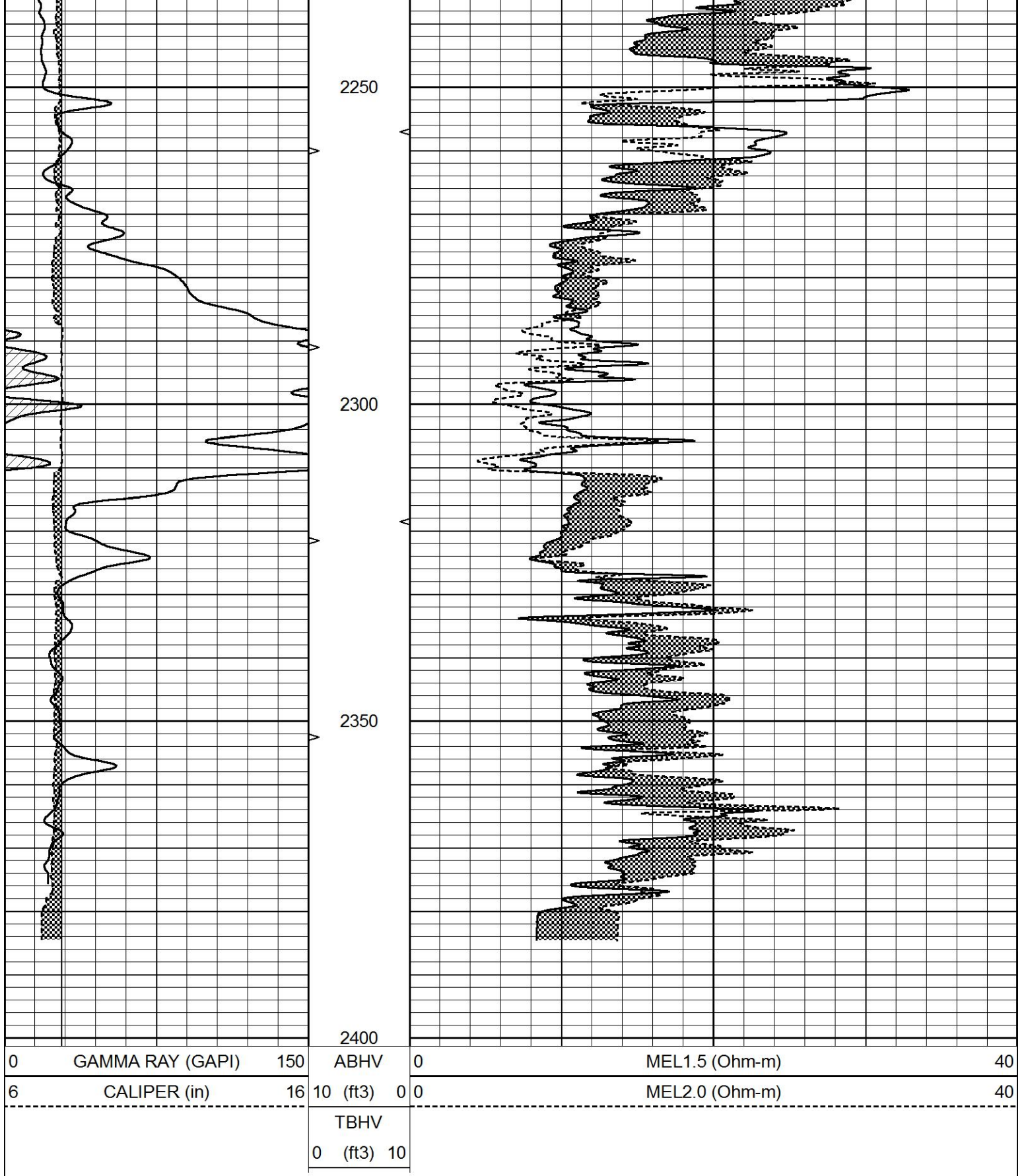
2050

2100

2150

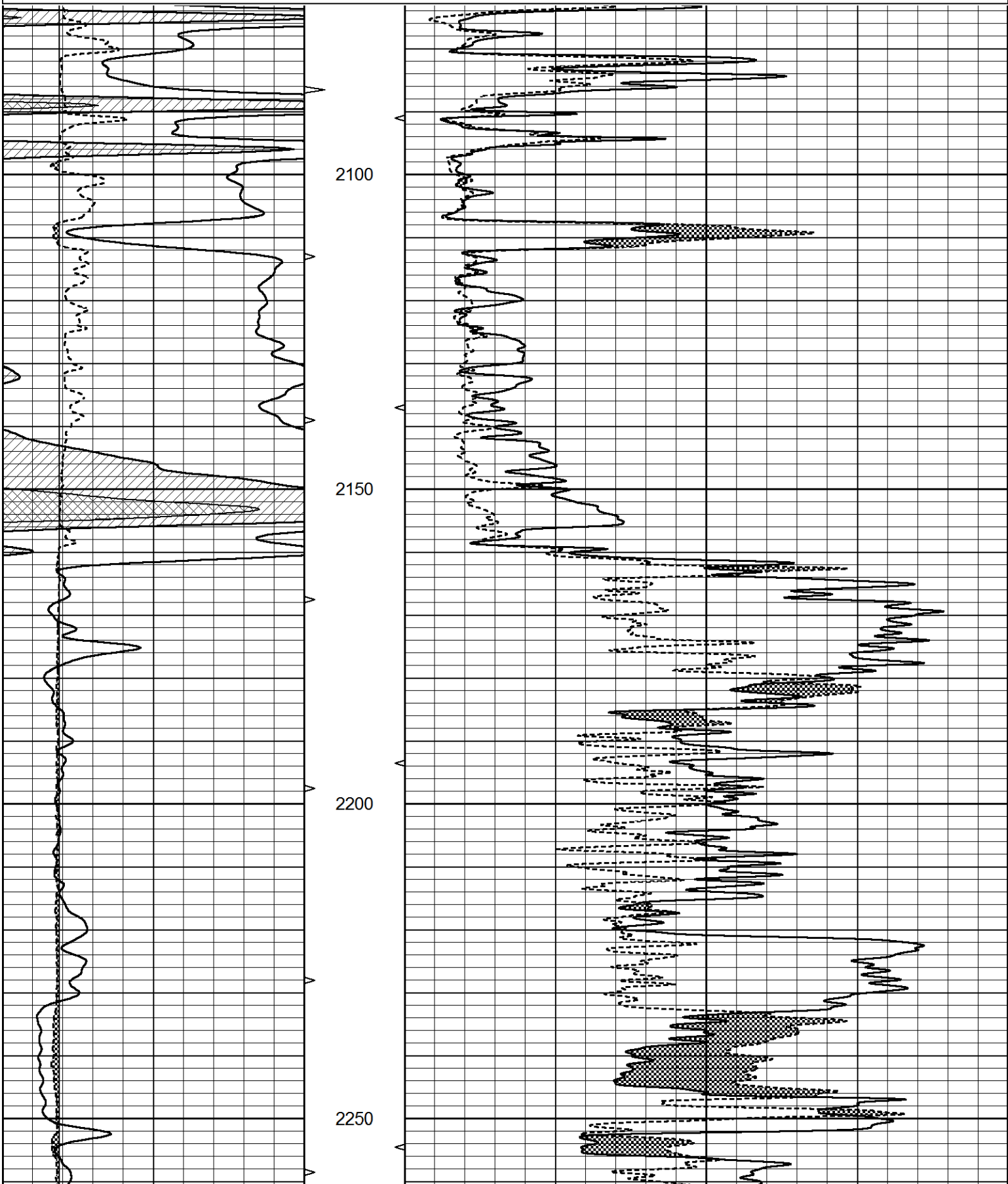
2200

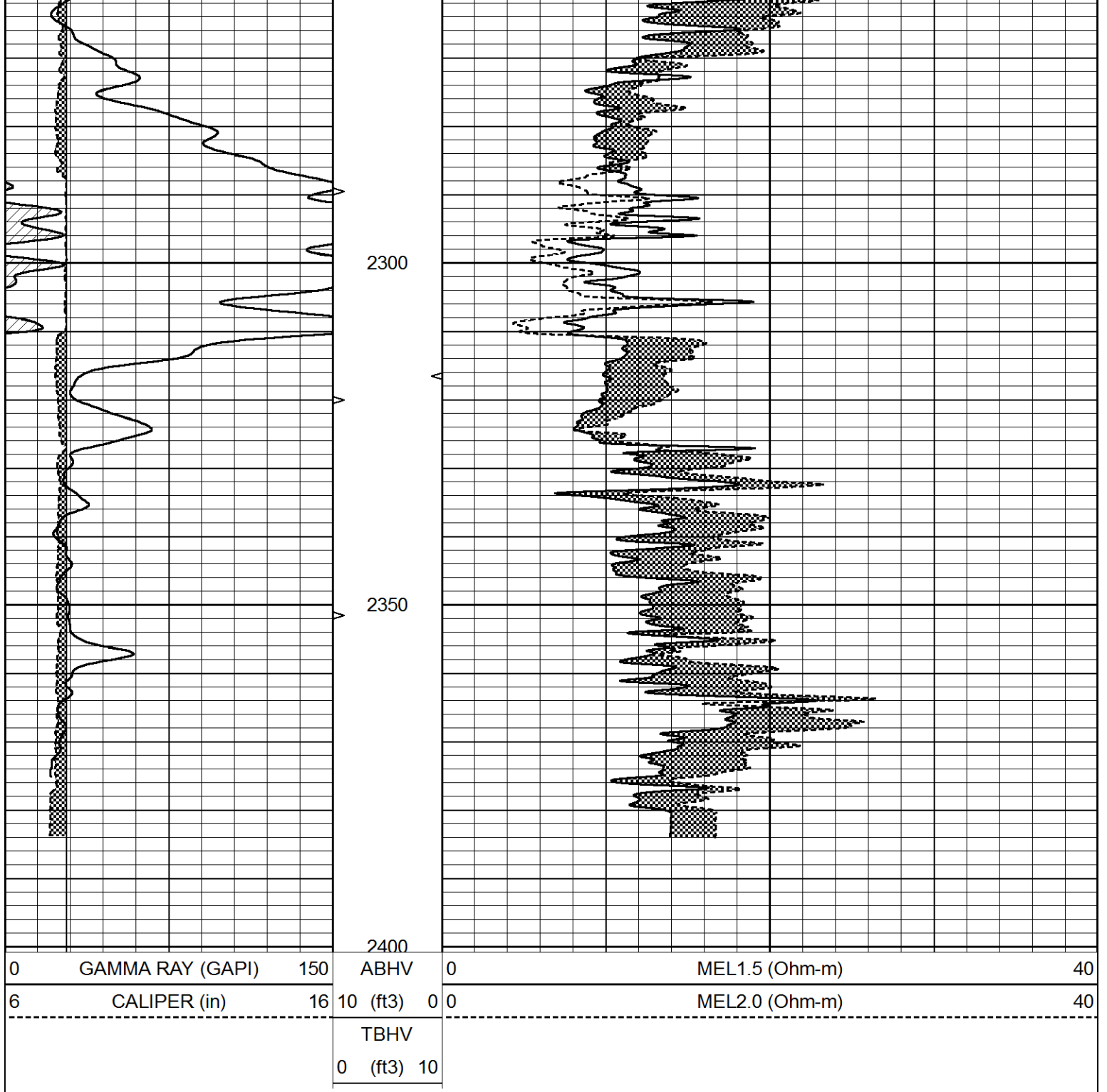




# REPEAT SECTION

0	GAMMA RAY (GAPI)	150	ABHV	0	MEL1.5 (Ohm-m)	40
6	CALIPER (in)	16	10 (ft3)	0 0	MEL2.0 (Ohm-m)	40
			TBHV			
			0 (ft3)	10		





### Calibration Report

Database File 5853pe.db  
 Dataset Pathname pass5.1  
 Dataset Creation Sun Sep 12 21:37:19 2021

### MICRO\_USR Calibration Report

Serial Number: 070910  
 Tool Model: Probel  
 Performed: Fri Aug 27 11:31:29 2021

Caliper Calibration: Gain=7.192 Offset=3.002

	Low Cal	High Cal
References	8.000	14.000
Readings	0.723	1.557

1.5" Calibration: Gain=30.000 Offset=-0.967

References	Low Cal	High Cal
Readings	0.000	20.000
	0.004	1.335

2" Calibration: Gain=50.000 Offset=-2.000

References	Low Cal	High Cal
Readings	0.000	20.000
	0.004	1.029

Microlog Calibration Report

Serial-Model: Performed:	070910-ProbeL (Not Performed)
-----------------------------	----------------------------------

	Readings			References			Results	
	Zero	Cal		Zero	Cal		m	b
Normal	0.0000	1.0000	V	0.0000	1.0000	Ohm-m	1.0000	0.0000
Inverse	0.0000	1.0000	V	0.0000	1.0000	Ohm-m	1.0000	0.0000
Caliper	0.0000	1.0000	V	0.0000	1.0000	in	1.0000	0.0000

Gamma Ray Calibration Report

Serial Number:	070558
Tool Model:	Probe1
Performed:	Fri Oct 30 21:32:56 2020

Calibrator Value:	1.0	GAPI
-------------------	-----	------

Background Reading:	0.0	cps
Calibrator Reading:	1.0	cps

Sensitivity:	0.2700	GAPI/cps
--------------	--------	----------