



DUAL
INDUCTION
LOG

Company DARRAH OIL COMPANY, LLC.

Well PANTHER RANCH #1-30

Field

County CHASE

State KANSAS

Location:

API #: 15-017-20928-0000

596' FNL & 542' FEL

SEC 30 TWP 19S RGE 6E

Permanent Datum GROUND LEVEL Elevation 1436
Log Measured From KELLY BUSHING 9' A.G.L
Drilling Measured From KELLY BUSHING

Other Services
CDL/CNL/PE
MEL/SON
Elevation
K.B. 1445
D.F. 1443
G.L. 1436

Date 9/12/21

Run Number ONE

Depth Driller 2399

Depth Logger 2398

Bottom Logged Interval 2396

Top Log Interval 00

Casing Driller 8 5/8" @ 239

Casing Logger 239

Bit Size 7 7/8

Type Fluid in Hole CHEMICAL MUD

Density / Viscosity NA/47

pH / Fluid Loss NA/8.8

Source of Sample FLOWLINE

Rm @ Meas. Temp 1.50 @ 92F

Rmf @ Meas. Temp 1.12 @ 92F

Rmc @ Meas. Temp 1.80 @ 92F

Source of Rmf / Rmc MEASUREMENT

Rm @ BHT 1.35 @ 102F

Time Circulation Stopped 2 HOURS

Time Logger on Bottom ////

Maximum Recorded Temperature 102F

Equipment Number 3802

Location HAYS, KANSAS

Recorded By JASON CAPPELLUCCI

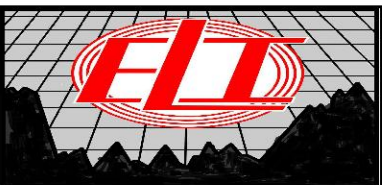
Witnessed By ROGER MARTIN

<<< Fold Here >>>

All interpretations are opinions based on inferences from electrical or other measurements and we cannot and do not guarantee the accuracy or correctness of any interpretation, and we shall not, except in the case of gross or willful negligence on our part, be liable or responsible for any loss, costs, damages, or expenses incurred or sustained by anyone resulting from any interpretation made by any of our officers, agents or employees. These interpretations are also subject to our general terms and conditions set out in our current Price Schedule.

Comments

THANK YOU FOR USING ELI WIRELINE SERVICES, HAYS, KS. (785) 628-6395
DIRECTIONS
MARION, KS. - 13 EAST TO RD. C - 1 NORTH - WEST INTO

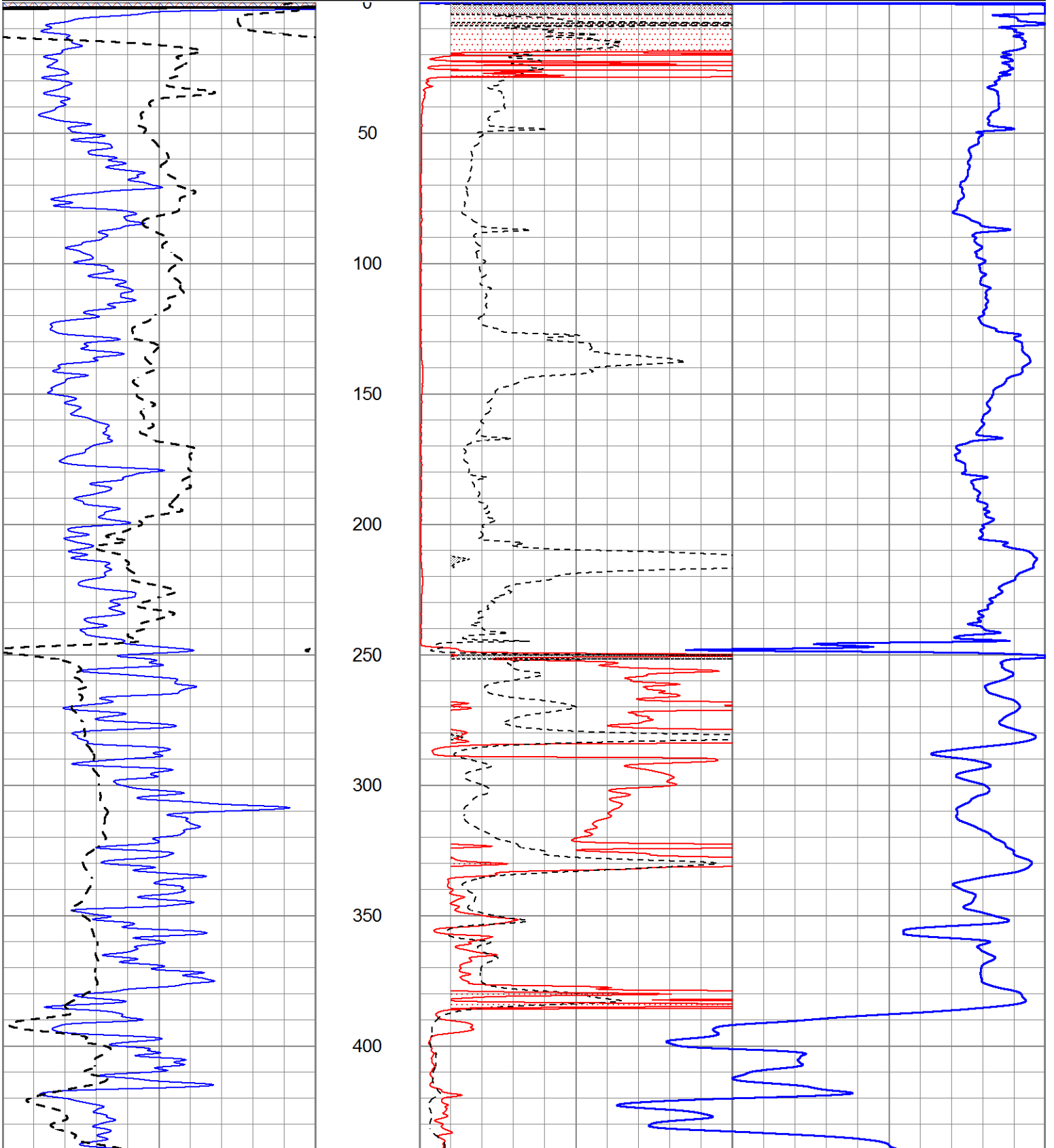


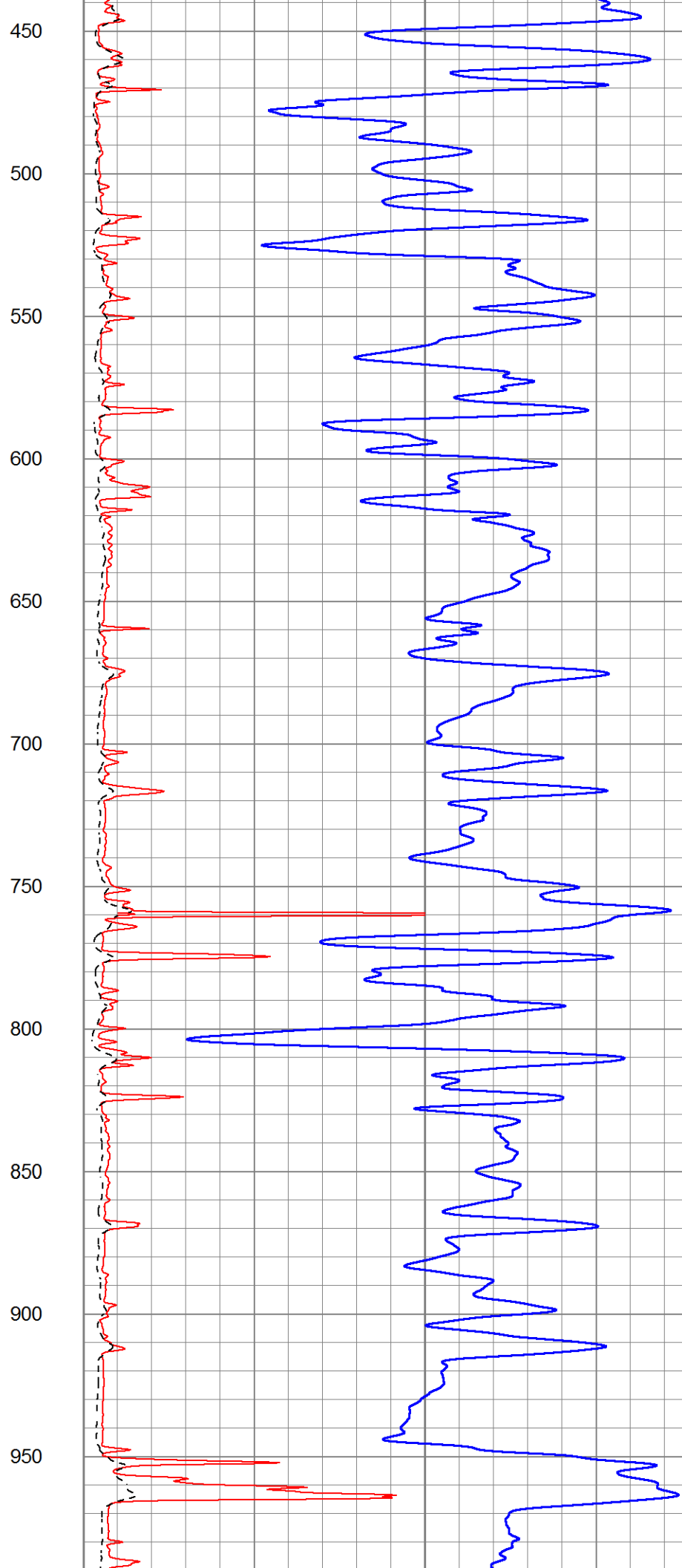
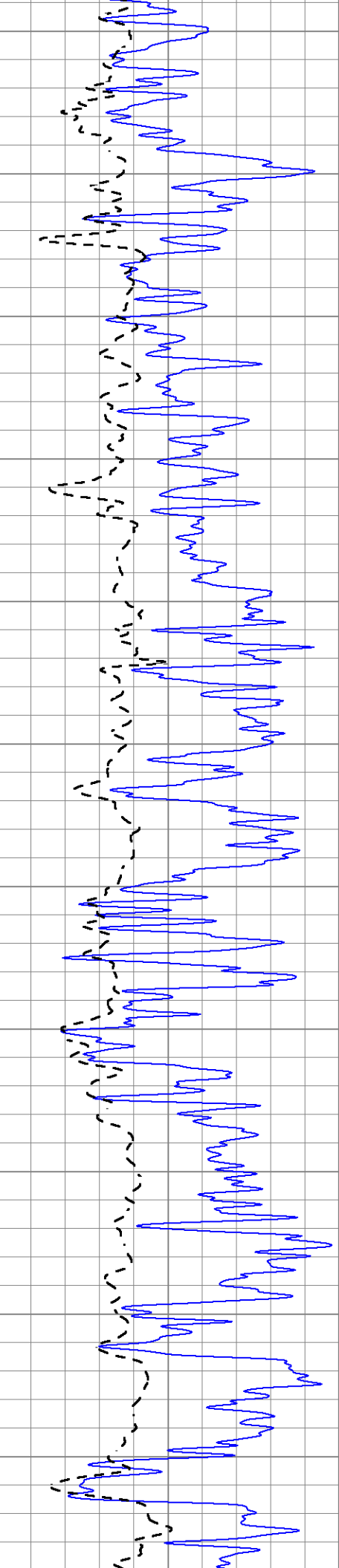
MAIN SECTION

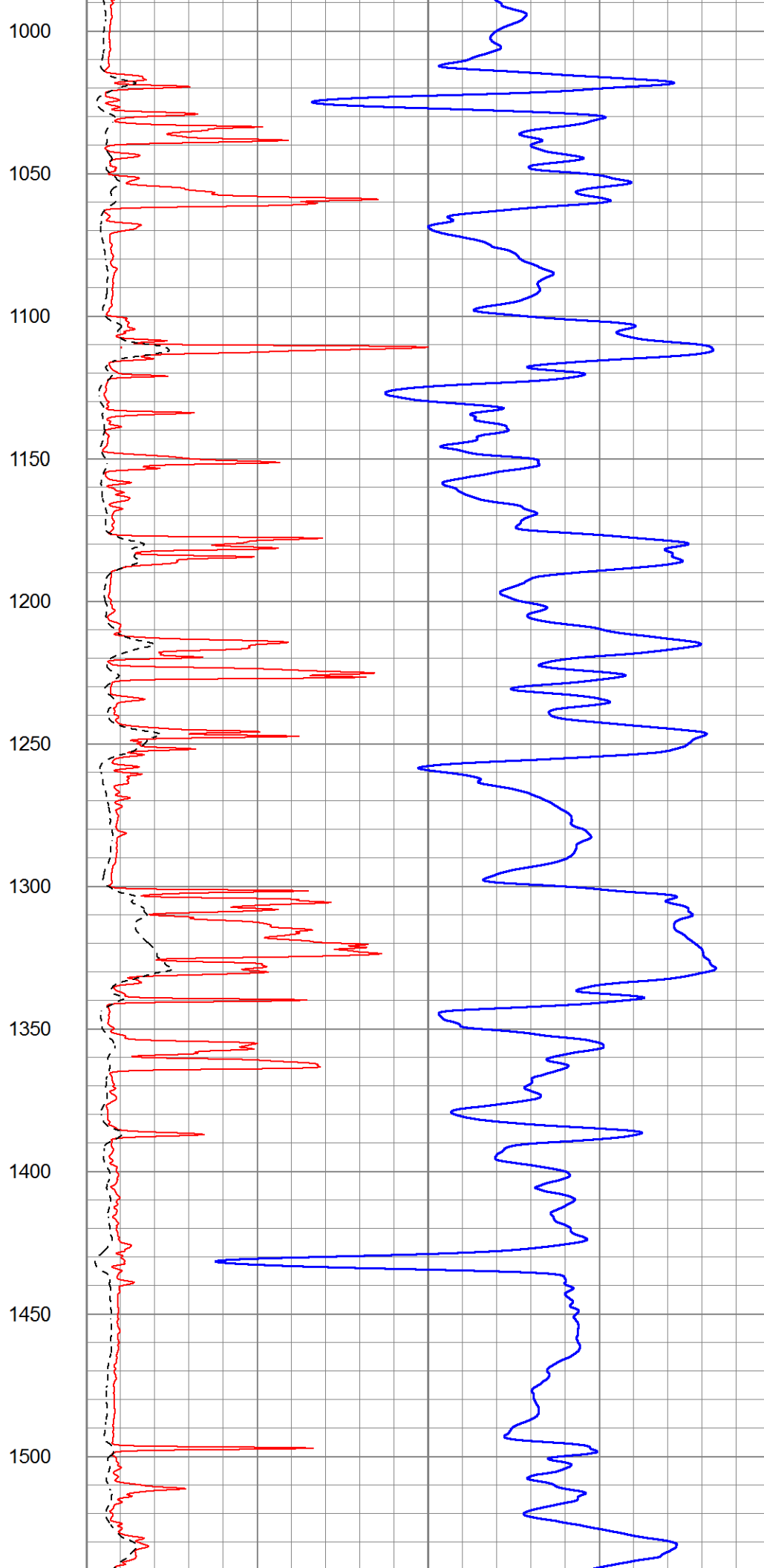
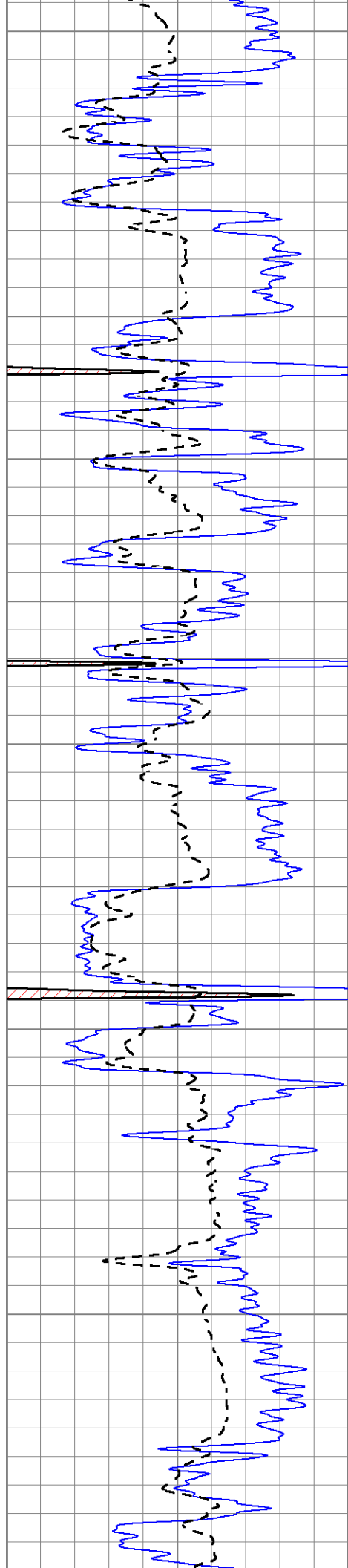
Database File 5853pe.db
 Dataset Pathname pass3.3
 Presentation Format _dil2
 Dataset Creation Sun Sep 12 20:16:41 2021
 Charted by Depth in Feet scaled 1:600

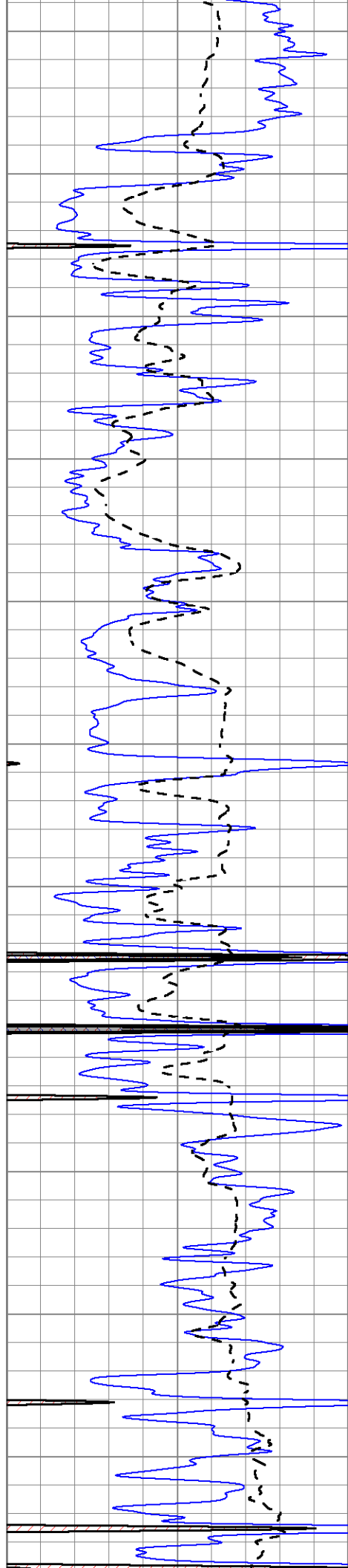
0	Gamma Ray (GAPI)	150
-100	SP (mV)	100

1000	CILD (mmho/m)	0
0	RLL3 (Ohm-m)	50
0	Deep Induction (Ohm-m)	50
50	RILD X10 (Ohm-m)	500
50	RLL3 X10 (Ohm-m)	500

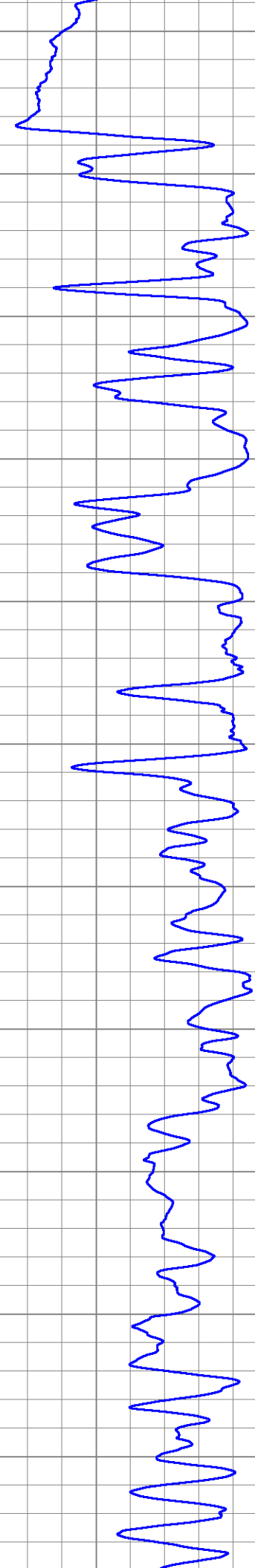
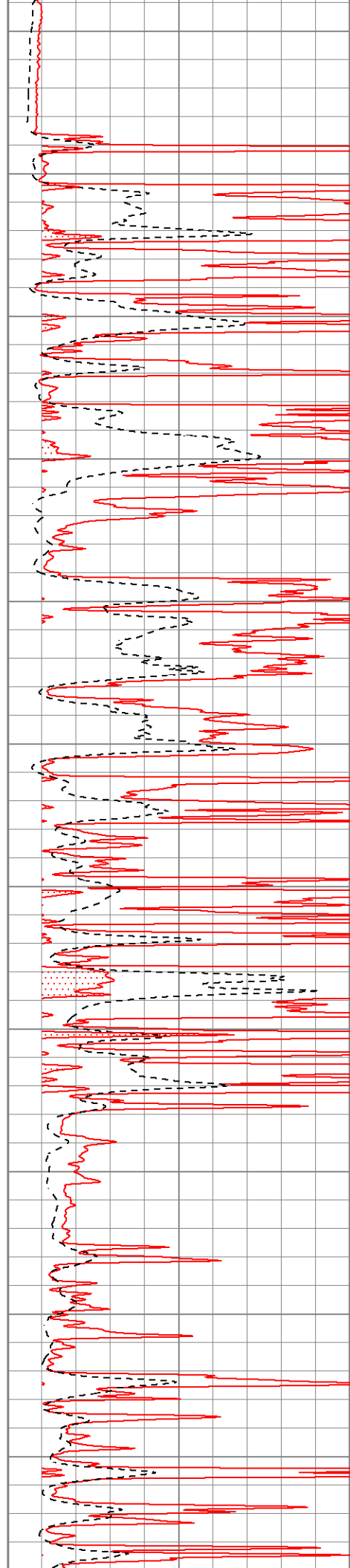


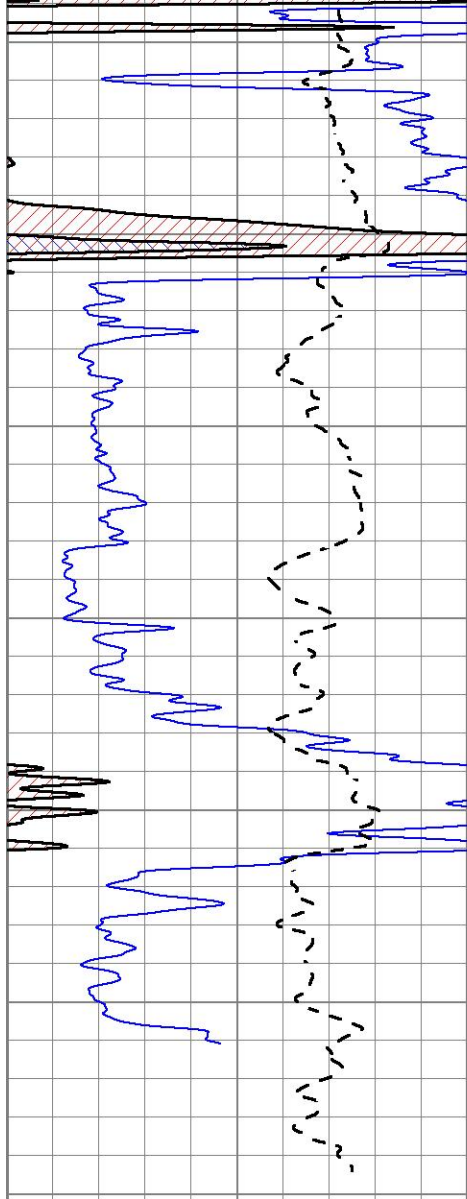




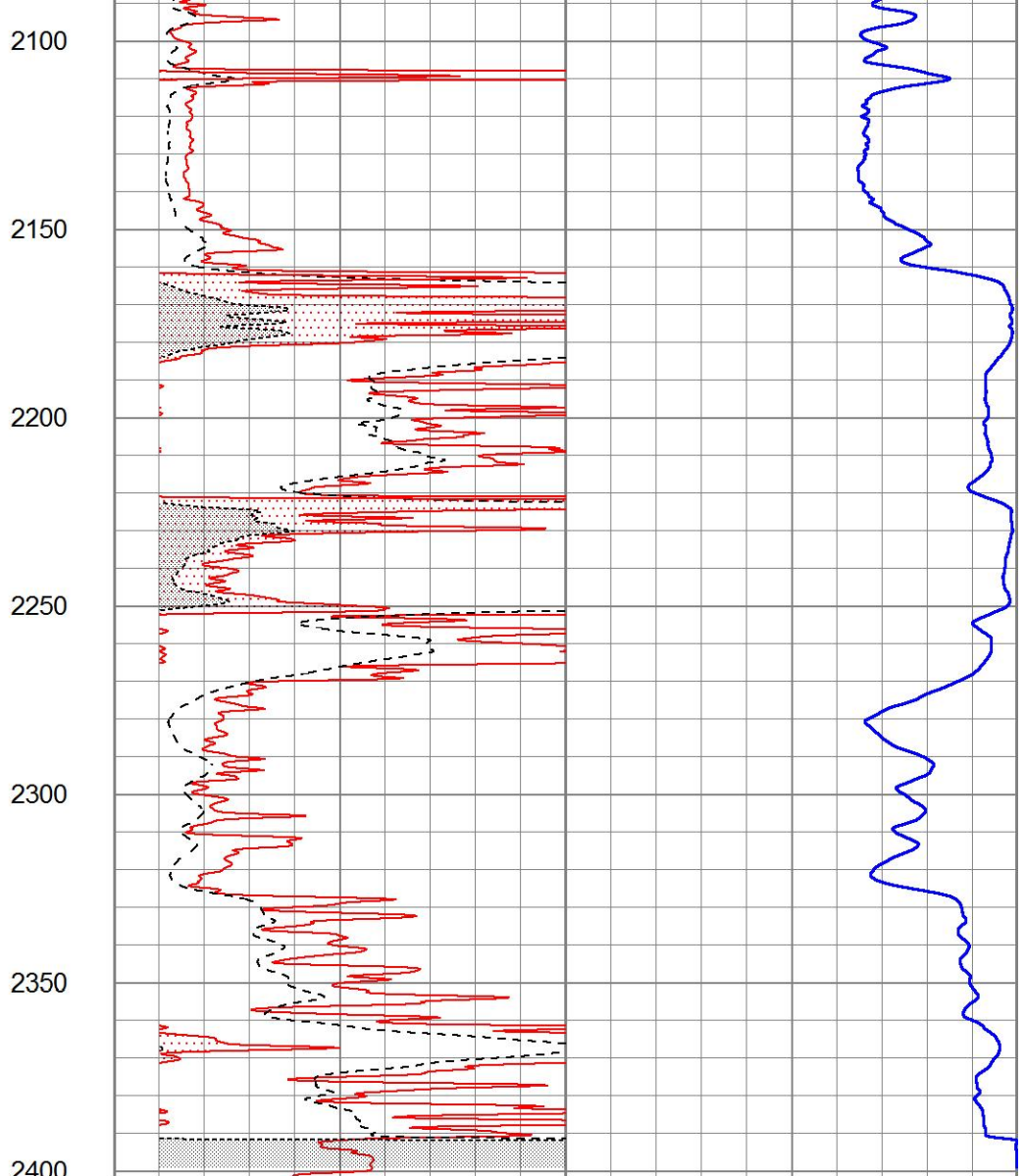


1550
1600
1650
1700
1750
1800
1850
1900
1950
2000
2050





0	Gamma Ray (GAPI)	150
-100	SP (mV)	100



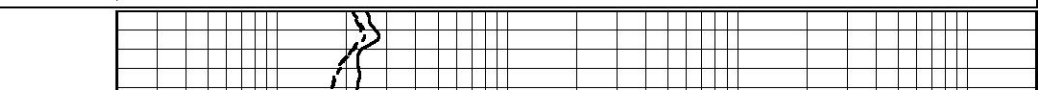
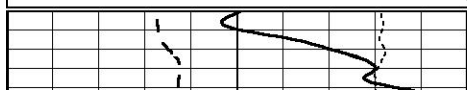
1000	CILD (mmho/m)	0
0	RLL3 (Ohm-m)	50
0	Deep Induction (Ohm-m)	50
50	RILD X10 (Ohm-m)	500
50	RLL3 X10 (Ohm-m)	500

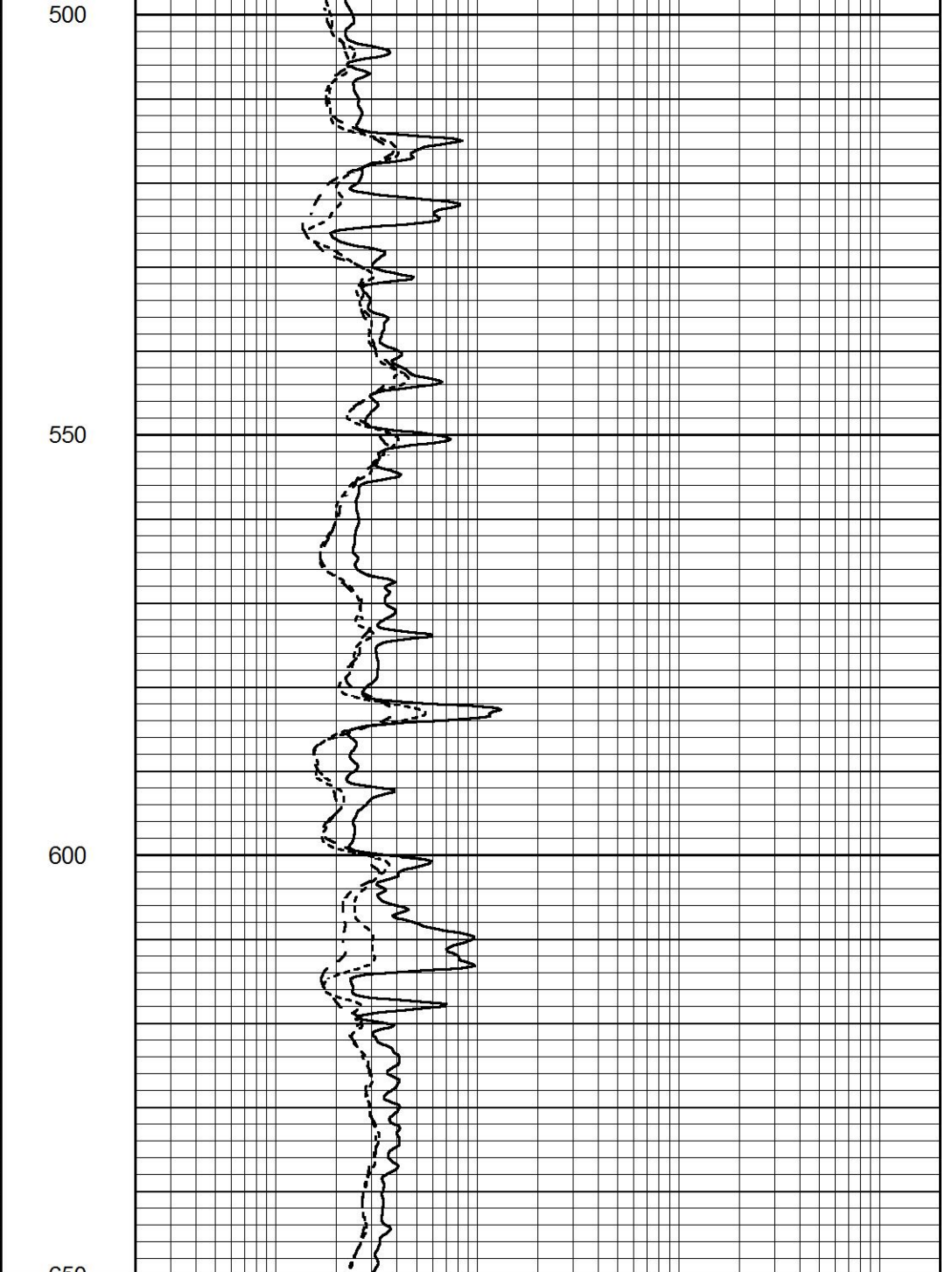
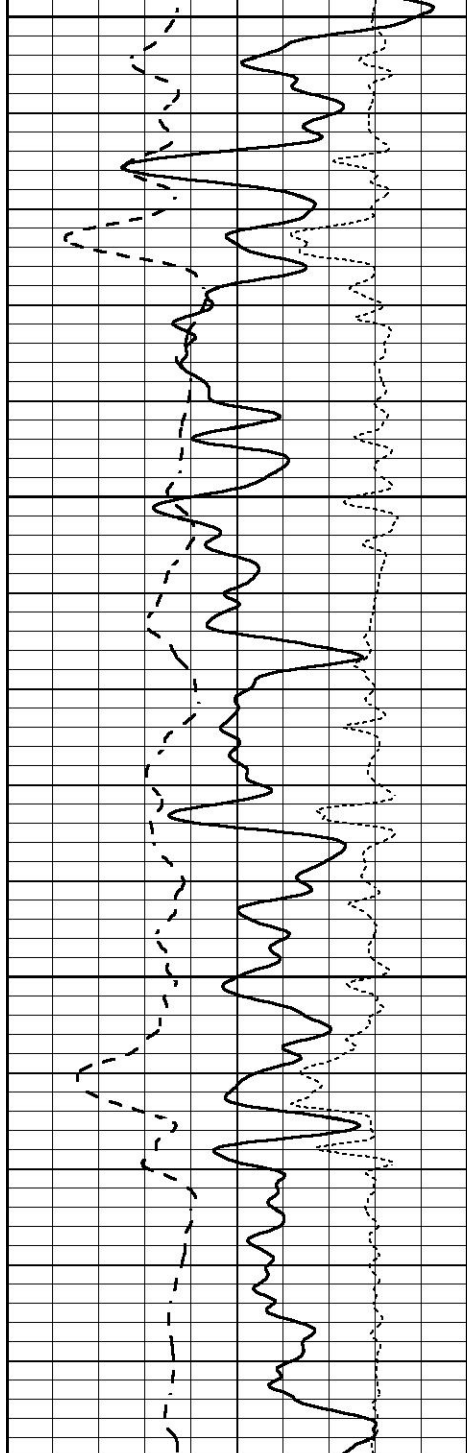


UPPER SECTION

Database File 5853pe.db
 Dataset Pathname pass3.2
 Presentation Format _dil
 Dataset Creation Sun Sep 12 19:48:08 2021
 Charted by Depth in Feet scaled 1:240

0	GAMMA RAY (GAPI)	150	0.2	SHALLOW GUARD (Ohm-m)	2000
-100	SP (mV)	100	0.2	MEDIUM INDUCTION (Ohm-m)	2000
-250	Rxo/Rt	50	0.2	DEEP INDUCTION (Ohm-m)	2000





0	GAMMA RAY (GAPI)	150
-100	SP (mV)	100
-250	Rxo/Rt	50

0.2	SHALLOW GUARD (Ohm-m)	2000
0.2	MEDIUM INDUCTION (Ohm-m)	2000
0.2	DEEP INDUCTION (Ohm-m)	2000



MAIN SECTION

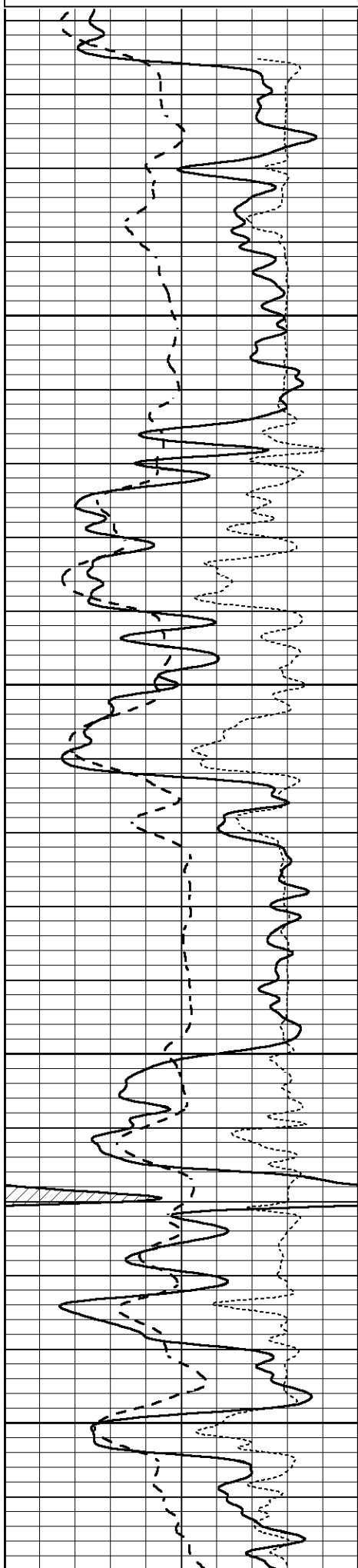
Database File 5853pe.db
 Dataset Pathname pass3.1
 Presentation Format _dil
 Dataset Creation Sun Sep 12 19:30:13 2021
 Charted by Depth in Feet scaled 1:240

0	GAMMA RAY (GAPI)	150
100	SP (mV)	100

0.2	SHALLOW GUARD (Ohm-m)	2000
0.2	MEDIUM INDUCTION (Ohm-m)	2000

100
-250 Rxo/Rt 50

0.2 MEDIUM INDUCTION (Ohm-m) 2000
0.2 DEEP INDUCTION (Ohm-m) 2000

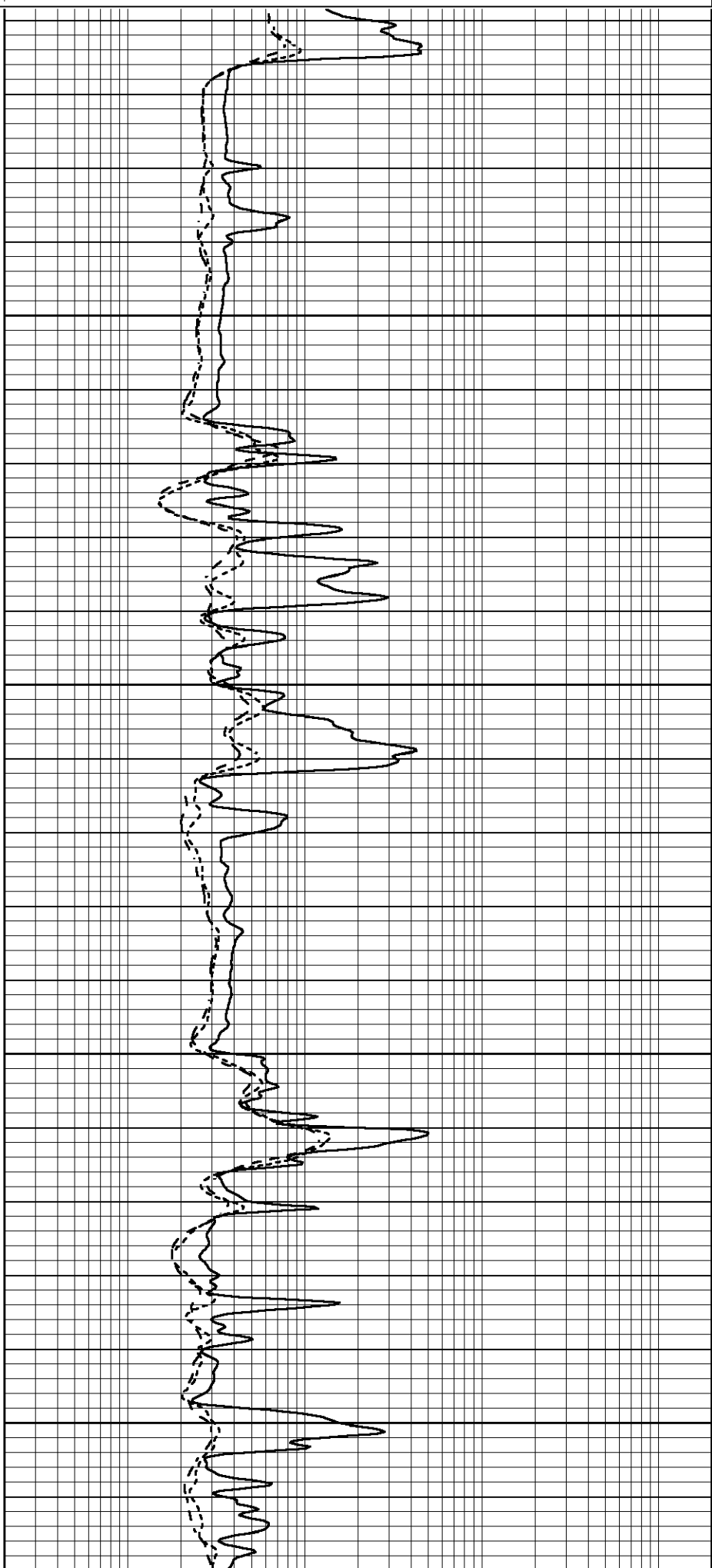


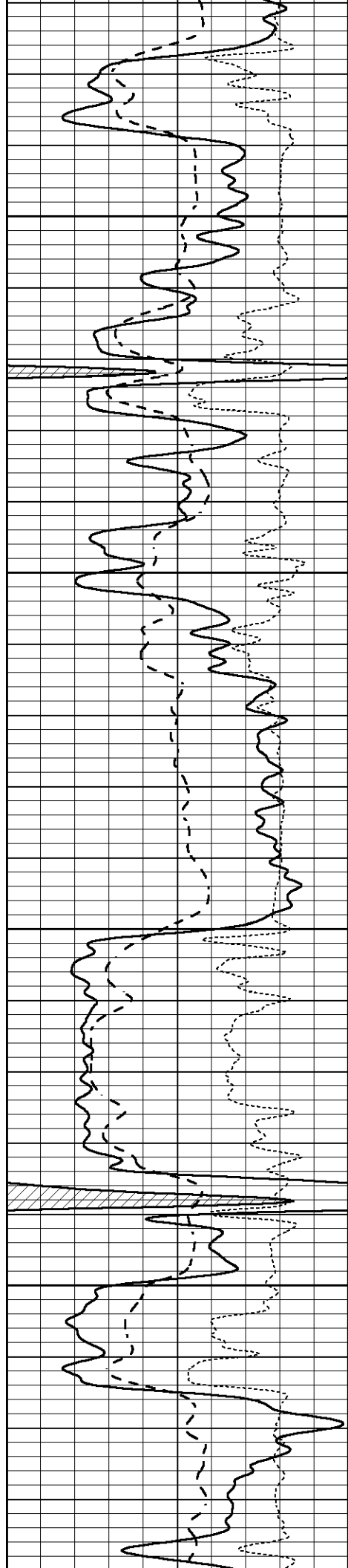
1000

1050

1100

1150



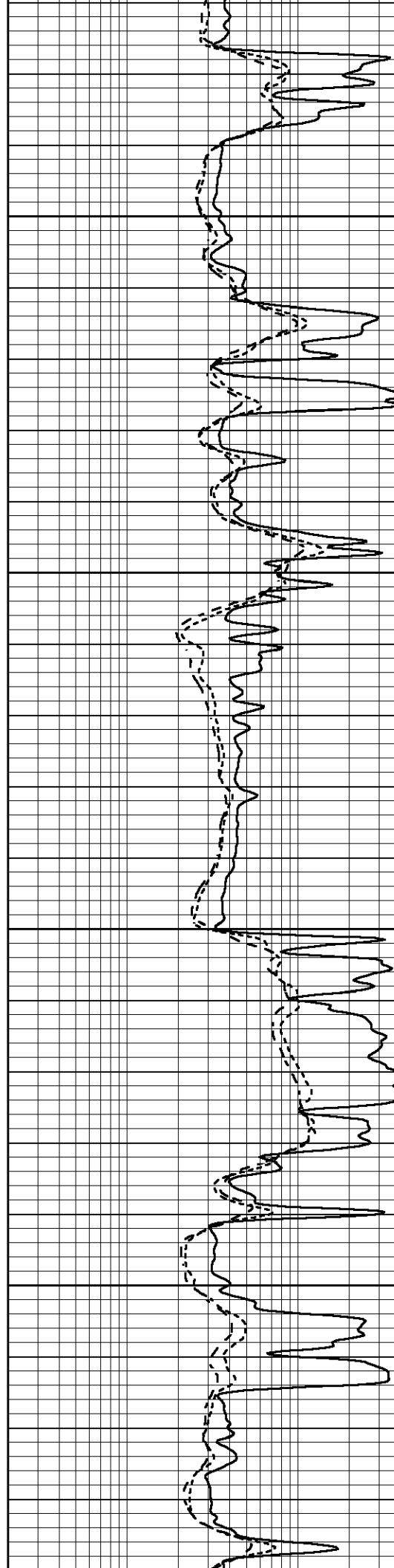


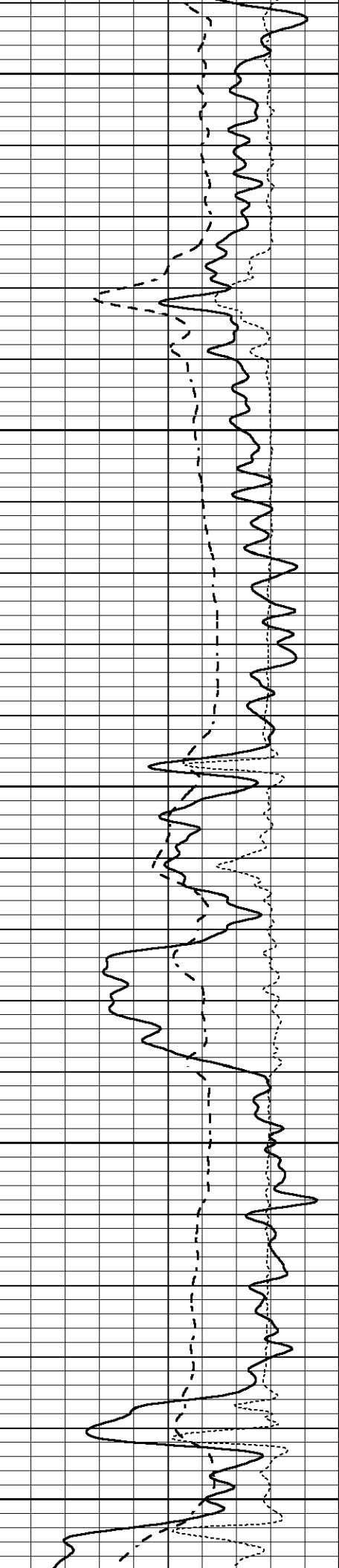
1200

1250

1300

1350





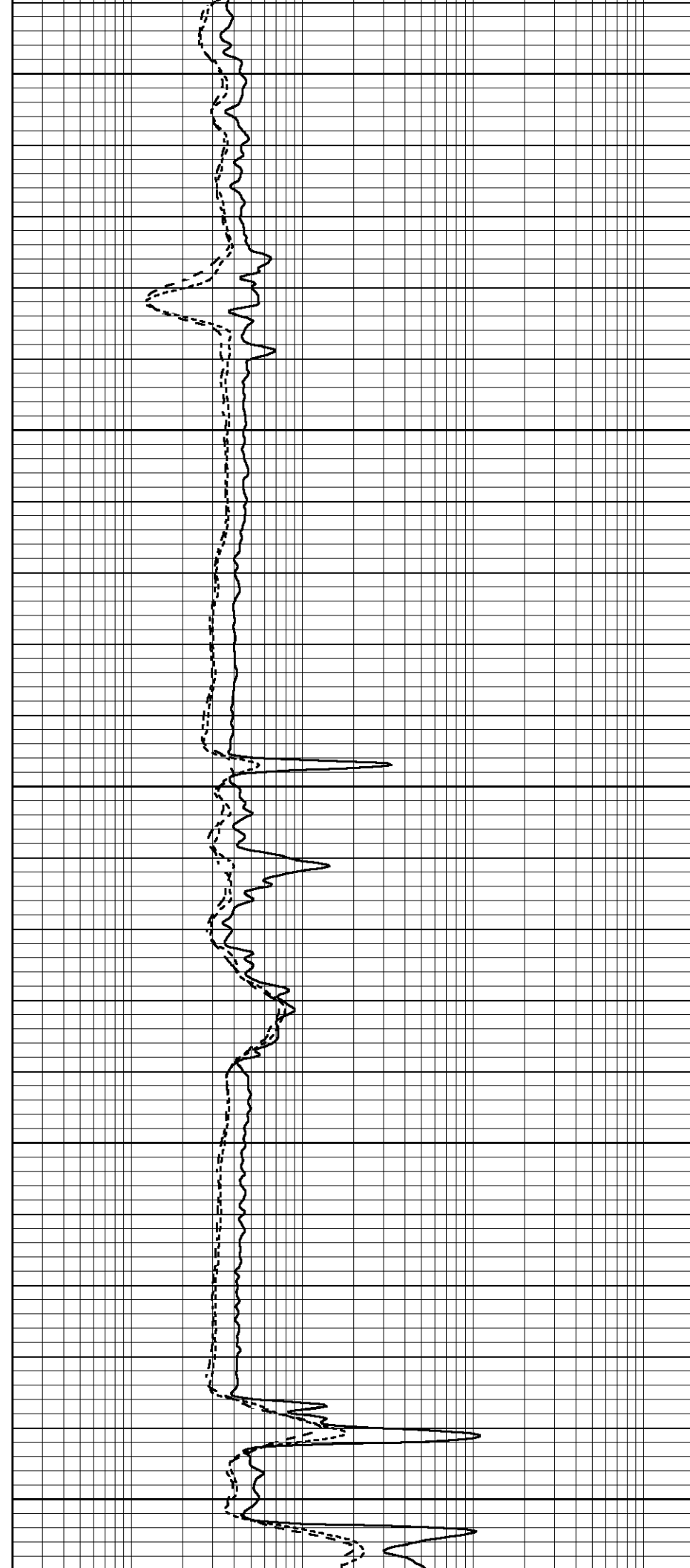
1400

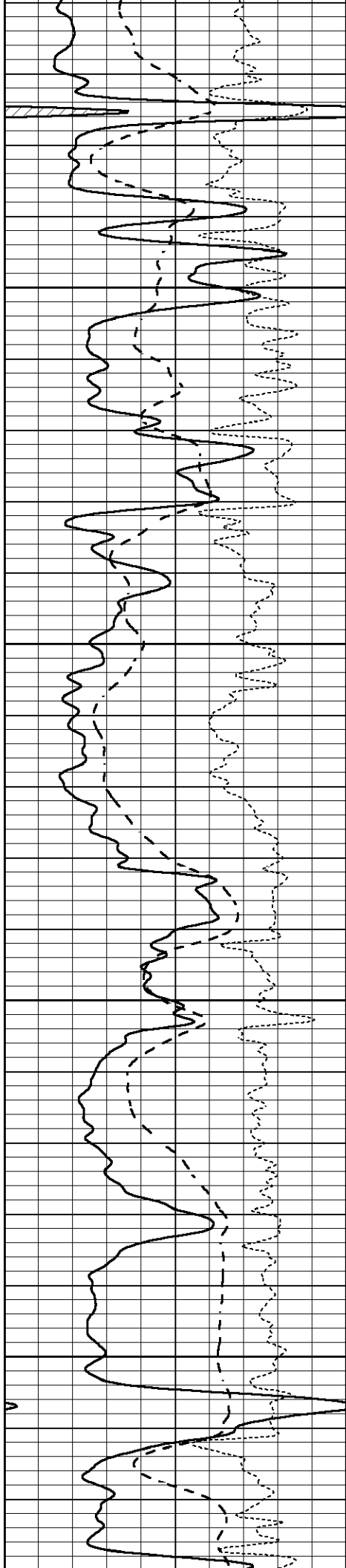
1450

1500

1550

1600



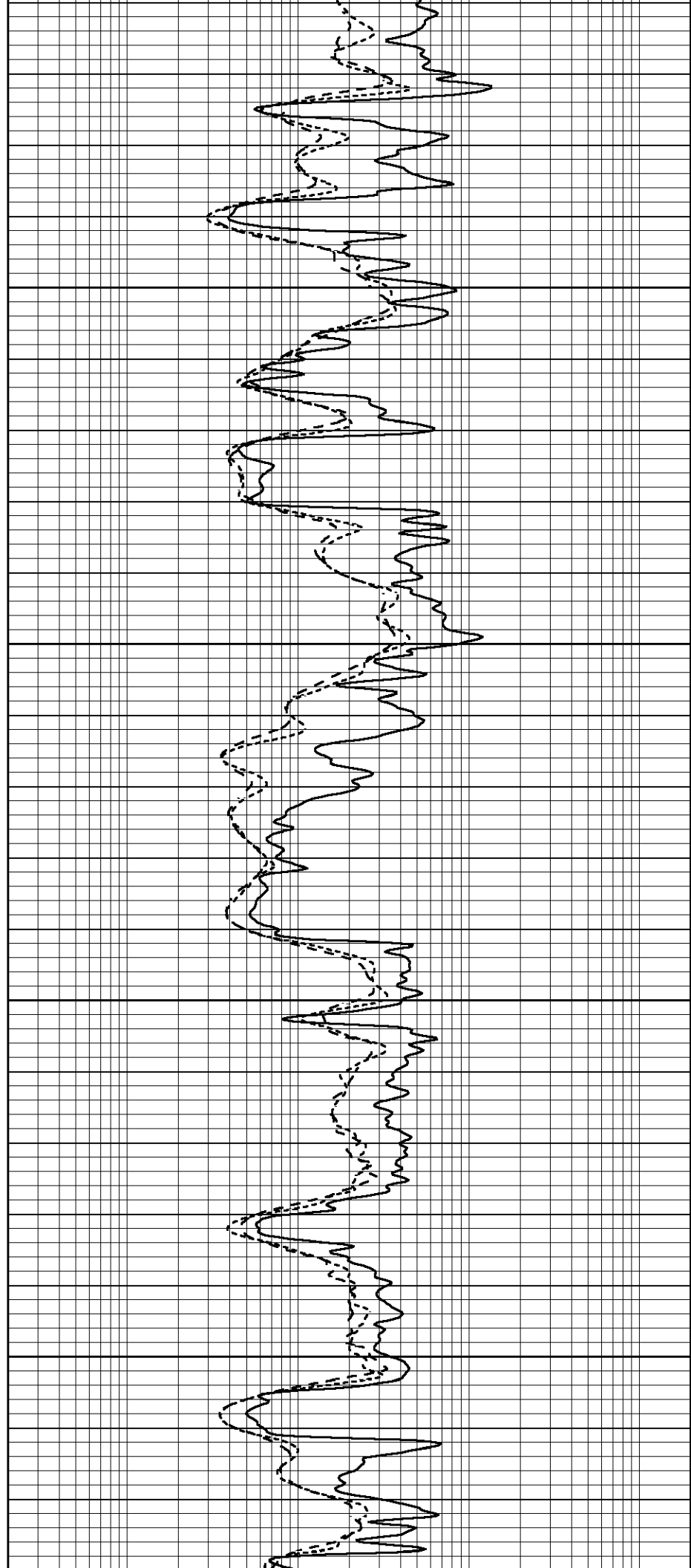


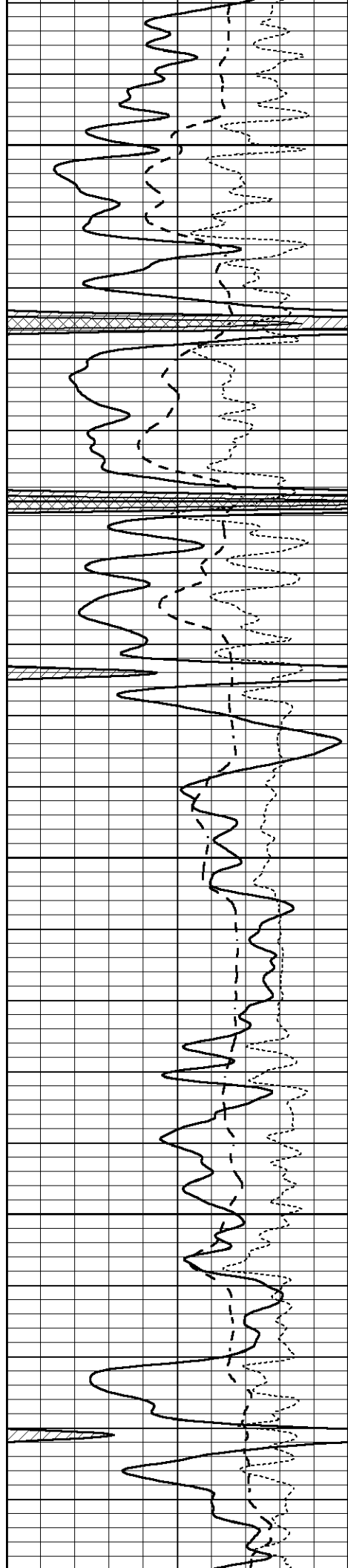
1650

1700

1750

1800





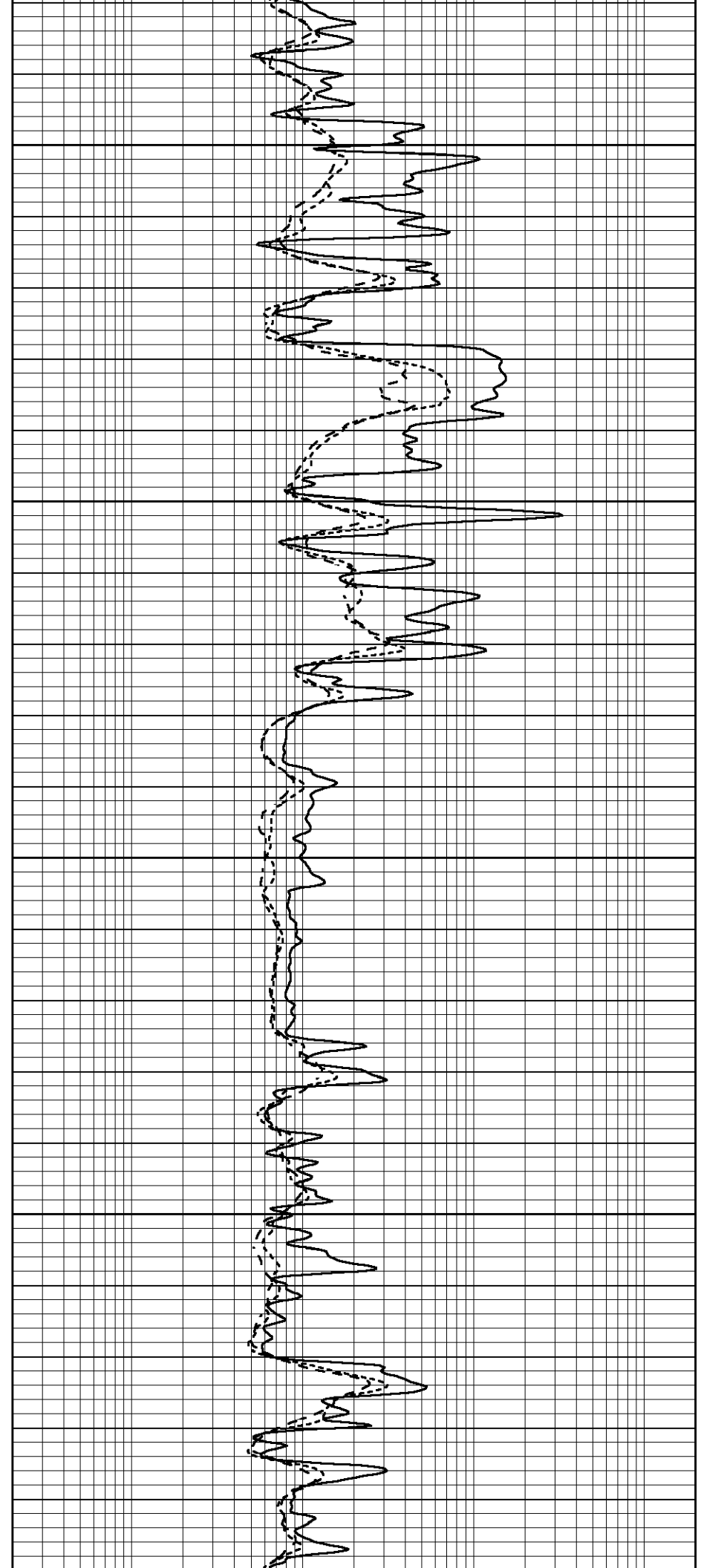
1850

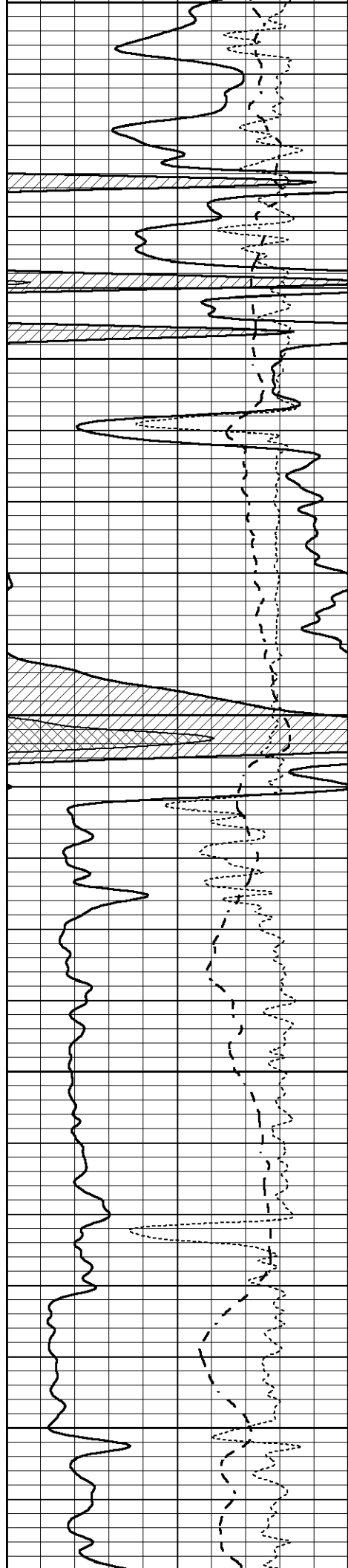
1900

1950

2000

2050





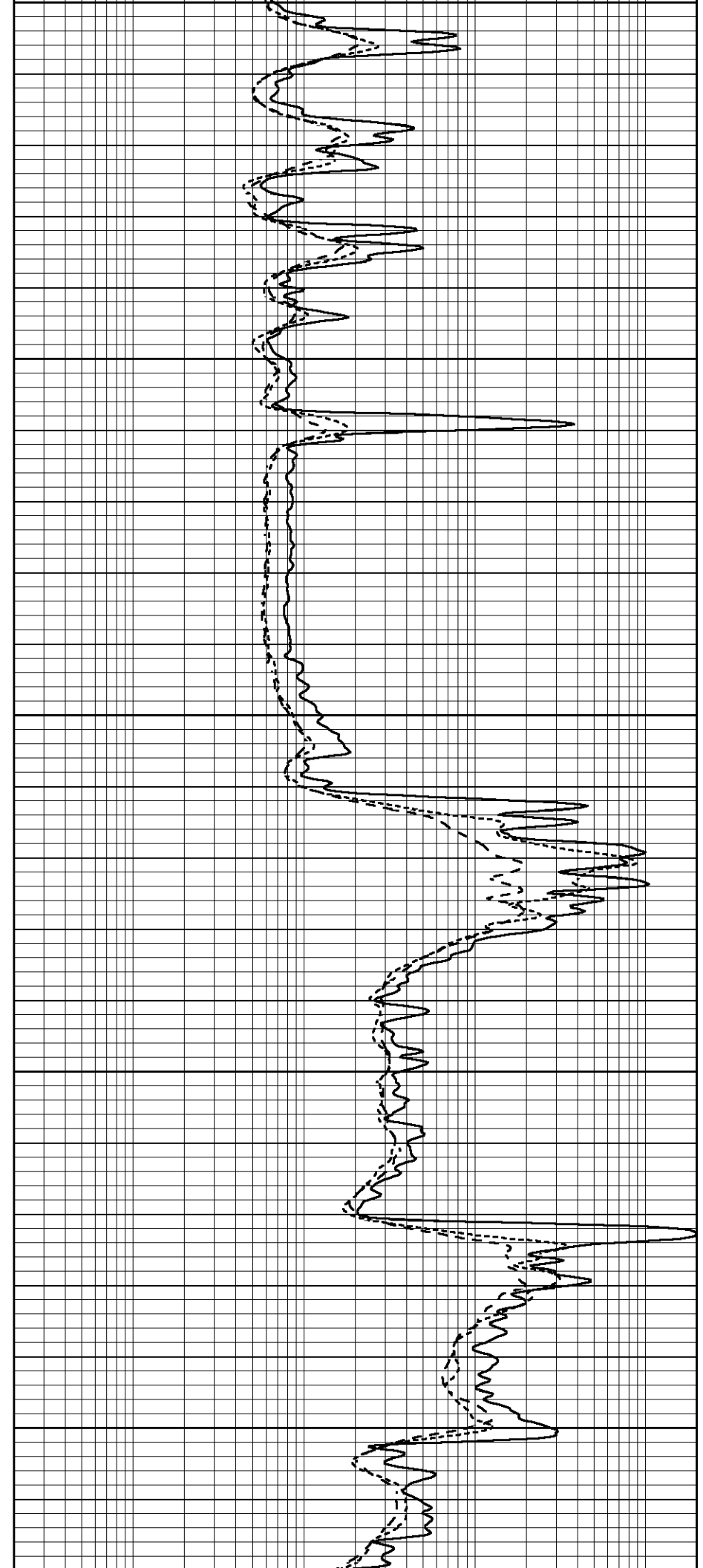
2050

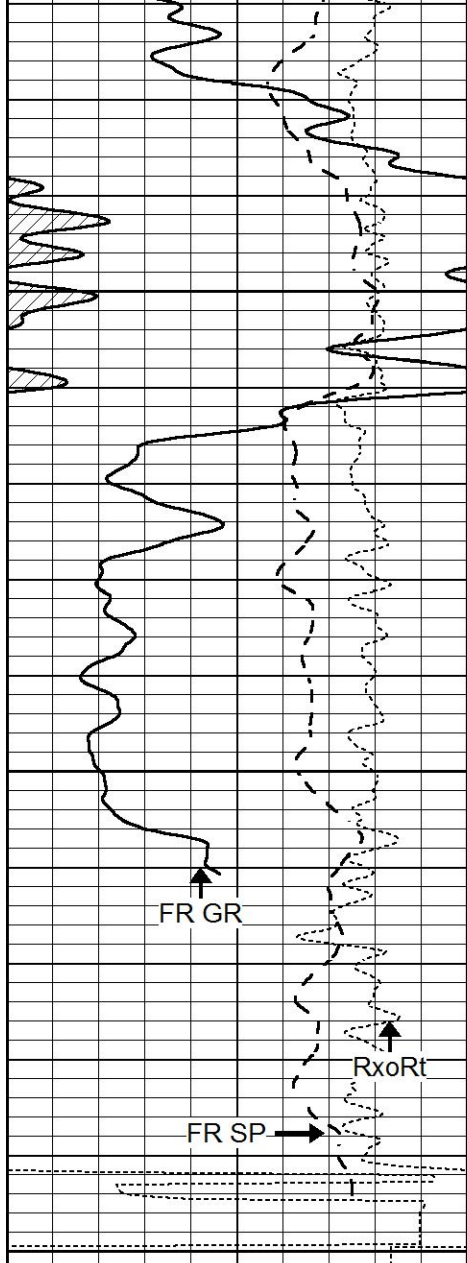
2100

2150

2200

2250





2300

2350

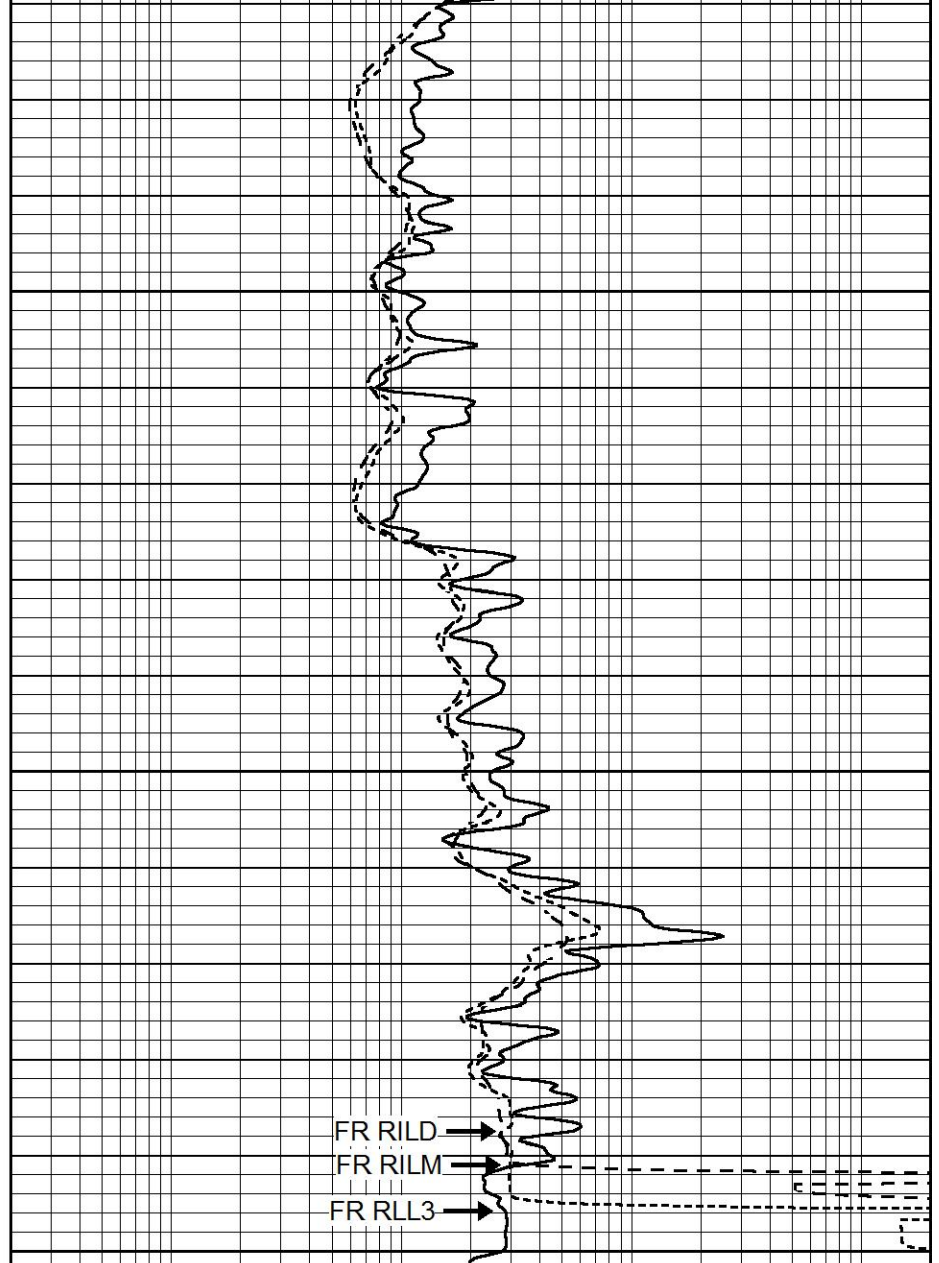
FR GR

RxoRt

FR SP

LTD 2398
2400

0	GAMMA RAY (GAPI)	150
-100	SP (mV)	100
-250	Rxo/Rt	50



FR RILD

FR RILM

FR RLL3

0.2	SHALLOW GUARD (Ohm-m)	2000
0.2	MEDIUM INDUCTION (Ohm-m)	2000
0.2	DEEP INDUCTION (Ohm-m)	2000

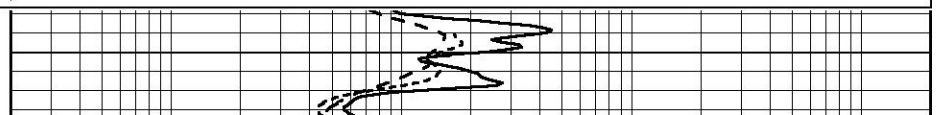


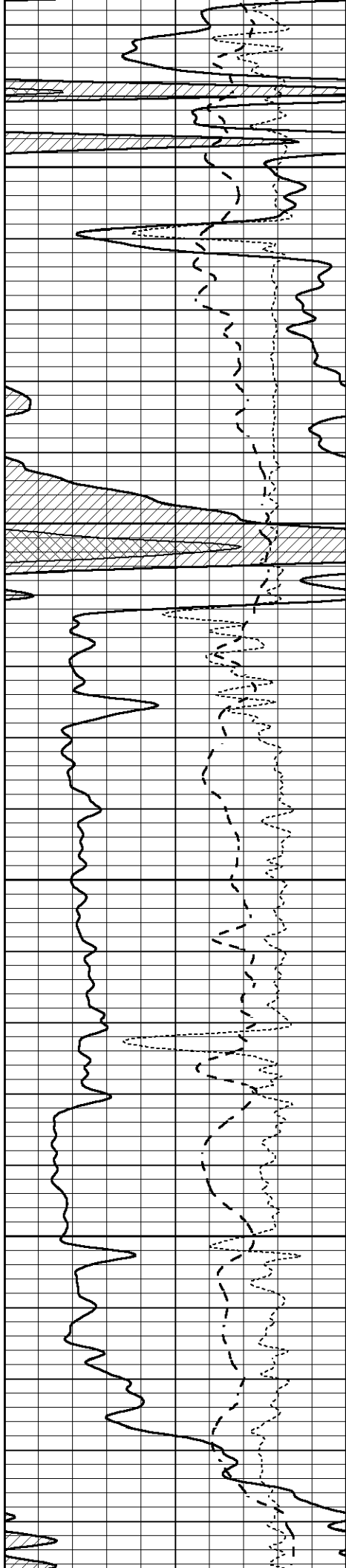
REPEAT SECTION

Database File 5853pe.db
 Dataset Pathname pass2.1
 Presentation Format _dil
 Dataset Creation Sun Sep 12 19:24:15 2021
 Charted by Depth in Feet scaled 1:240

0	GAMMA RAY (GAPI)	150
-100	SP (mV)	100
-250	Rxo/Rt	50

0.2	SHALLOW GUARD (Ohm-m)	2000
0.2	MEDIUM INDUCTION (Ohm-m)	2000
0.2	DEEP INDUCTION (Ohm-m)	2000



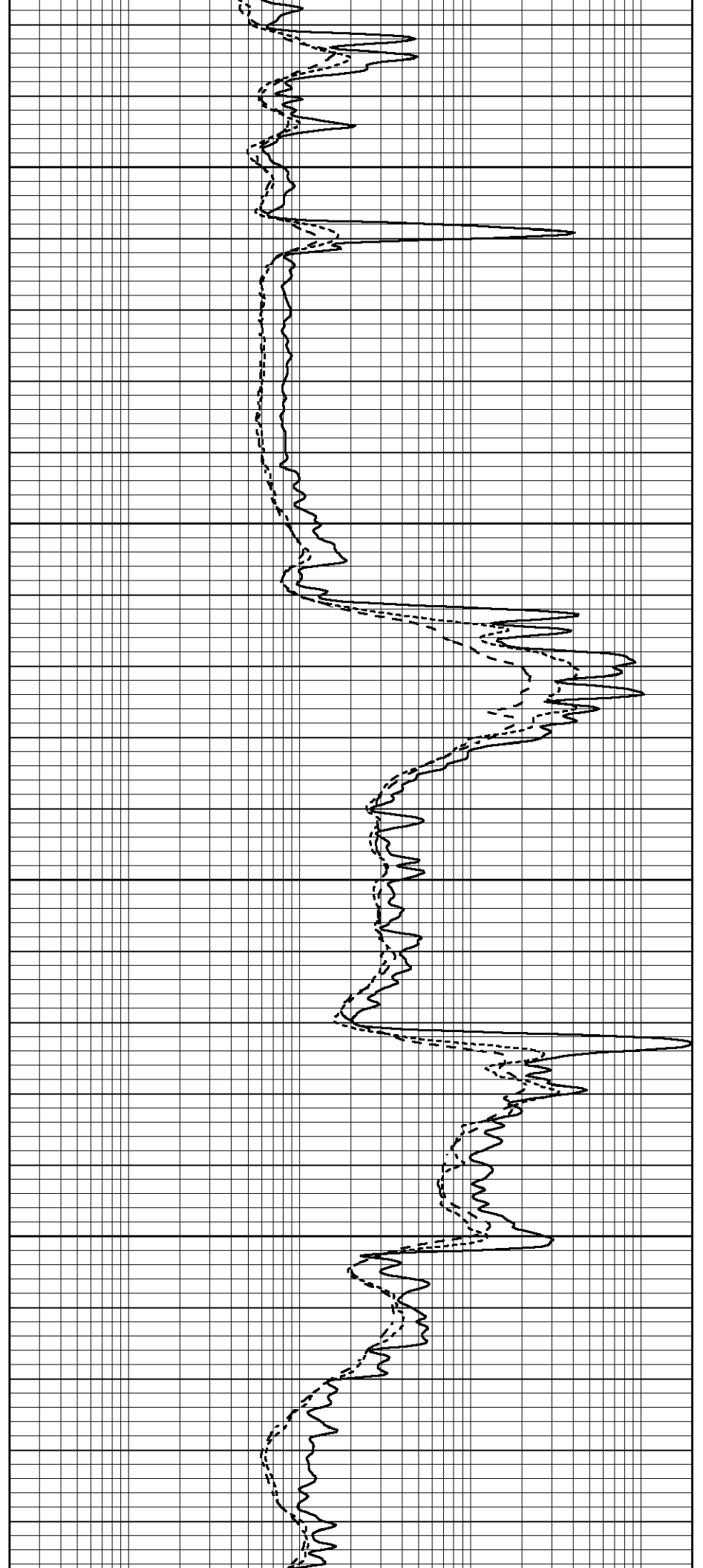


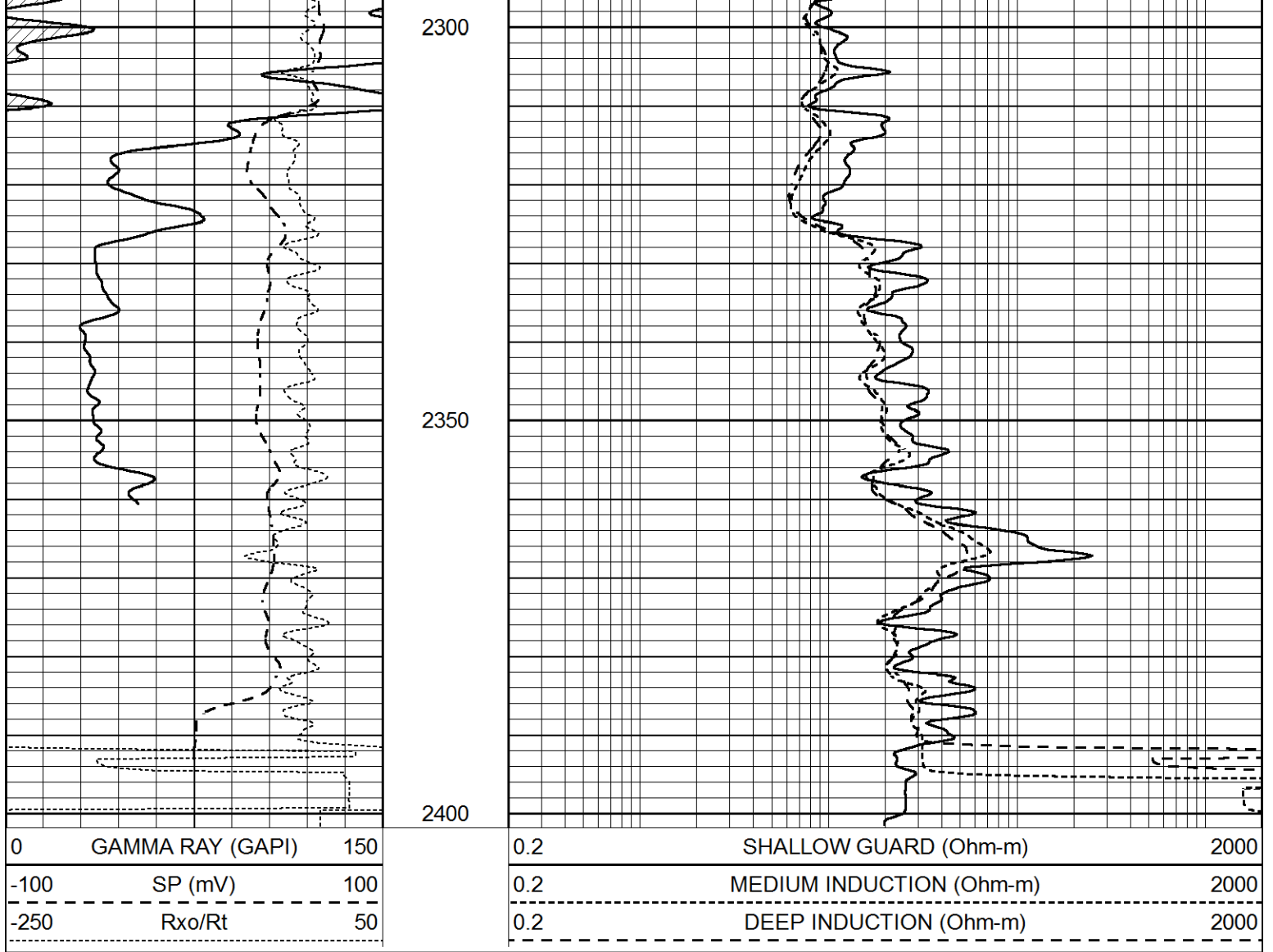
2100

2150

2200

2250





Calibration Report

Database File 5853pe.db
 Dataset Pathname pass2.1
 Dataset Creation Sun Sep 12 19:24:15 2021

Dual Induction Calibration Report

Serial-Model: FW1410-55-Probe
 Surface Cal Performed: Tue Feb 19 11:44:18 2019
 Downhole Cal Performed: Tue Feb 19 11:44:24 2019
 After Survey Verification Performed: Tue Feb 19 11:44:27 2019

Surface Calibration

Loop:	Readings			V	References			Results	
	Air	Loop			Air	Loop	mmho/m	m	b
Deep	0.011	0.656			1.000	400.000	mmho/m	618.595	-5.524
Medium	-0.000	0.731			1.000	400.000	mmho/m	545.377	1.170

Internal:	Readings			V	References			Results	
	Zero	Cal			Zero	Cal	mmho/m	m	b
Deep	0.007	0.649			0.000	400.000	mmho/m	623.784	-4.595
Medium	0.004	0.743			0.000	464.000	mmho/m	627.284	-2.251

Downhole Calibration

	Readings			V	References			Results	
	Zero	Cal			Zero	Cal	mmho/m	m'	b'

6517.8	7435.4	8.0	14.0	0.0	-12.6
--------	--------	-----	------	-----	-------

Before Survey Caliper Verification		Performed:			
	Reference	Reading			
Caliper (in)	_____	_____			

After Survey Caliper Verification		Performed:			
	Reference	Reading			
Caliper (in)	_____	_____			

Compensated Neutron Calibration Report

Serial Number:	080621PMC
Tool Model:	NABORS

PRE-SURVEY VERIFICATION				
Detector	Readings	Measured	Target	
Short Space	cps			
Long Space	cps	pu	pu	

POST-SURVEY VERIFICATION				
Detector	Readings	Measured	Target	
Short Space	cps			
Long Space	cps	pu	pu	

Gamma Ray Calibration Report

Serial Number:	7	
Tool Model:	Probe1	
Performed:	Tue Jan 19 17:50:08 2021	
Calibrator Value:	1.0	GAPI
Background Reading:	0.0	cps
Calibrator Reading:	1.0	cps
Sensitivity:	0.5300	GAPI/cps