



**COMPENSATED  
DENSITY / NEUTRON  
LOG**

Company RAYMOND OIL COMPANY, INC.

Well #12-1 SANSOM

Field WILDCAT

County NORTON

State KANSAS

Location:

API #: 15-137-20758-0000  
1089' FSL & 798' FSL  
NW - NE - SW - SW

Other Services  
DILMEL

SEC 12 TWP 4S RGE 22W

Elevation

Permanent Datum GROUND LEVEL Elevation 2247  
Log Measured From KELLY BUSHING 5' A.G.L.  
Drilling Measured From KELLY BUSHING

K.B. 2252  
D.F. 2250  
G.L. 2246

Company	RAYMOND OIL COMPANY, INC.
Well	#12-1 SANSOM
Field	WILDCAT
County	NORTON
State	KANSAS
Date	12/20/21
Run Number	ONE
Depth Driller	3843
Depth Logger	3842
Bottom Logged Interval	3818
Top Log Interval	3100
Casing Driller	8 5/8" @ 260
Casing Logger	260
Bit Size	7 7/8"
Type Fluid in Hole	CHEMICAL MUD
Density / Viscosity	9.2/46
PH / Fluid Loss	10.0/8.8
Source of Sample	FLOWLINE
Rm @ Meas. Temp	1.50 @ 65F
Rmf @ Meas. Temp	1.13 @ 65F
Rmc @ Meas. Temp	1.80 @ 65F
Source of Rmf / Rmc	MEASUREMENT
Rm @ BHT	.848 @ 115F
Time Circulation Stopped	2 HOURS
Time Logger on Bottom	3.45 A.M.
Maximum Recorded Temperature	115F
Equipment Number	922339
Location	HAYS, KANSAS
Recorded By	JEFF LUEBBERS
Witnessed By	KIM SHOEMAKER
	ROBERT TURNER

<<< Fold Here >>>

All interpretations are opinions based on inferences from electrical or other measurements and we cannot and do not guarantee the accuracy or correctness of any interpretation, and we shall not, except in the case of gross or willful negligence on our part, be liable or responsible for any loss, costs, damages, or expenses incurred or sustained by anyone resulting from any interpretation made by any of our officers, agents or employees. These interpretations are also subject to our general terms and conditions set out in our current Price Schedule.

15-137-20758-0000

Comments

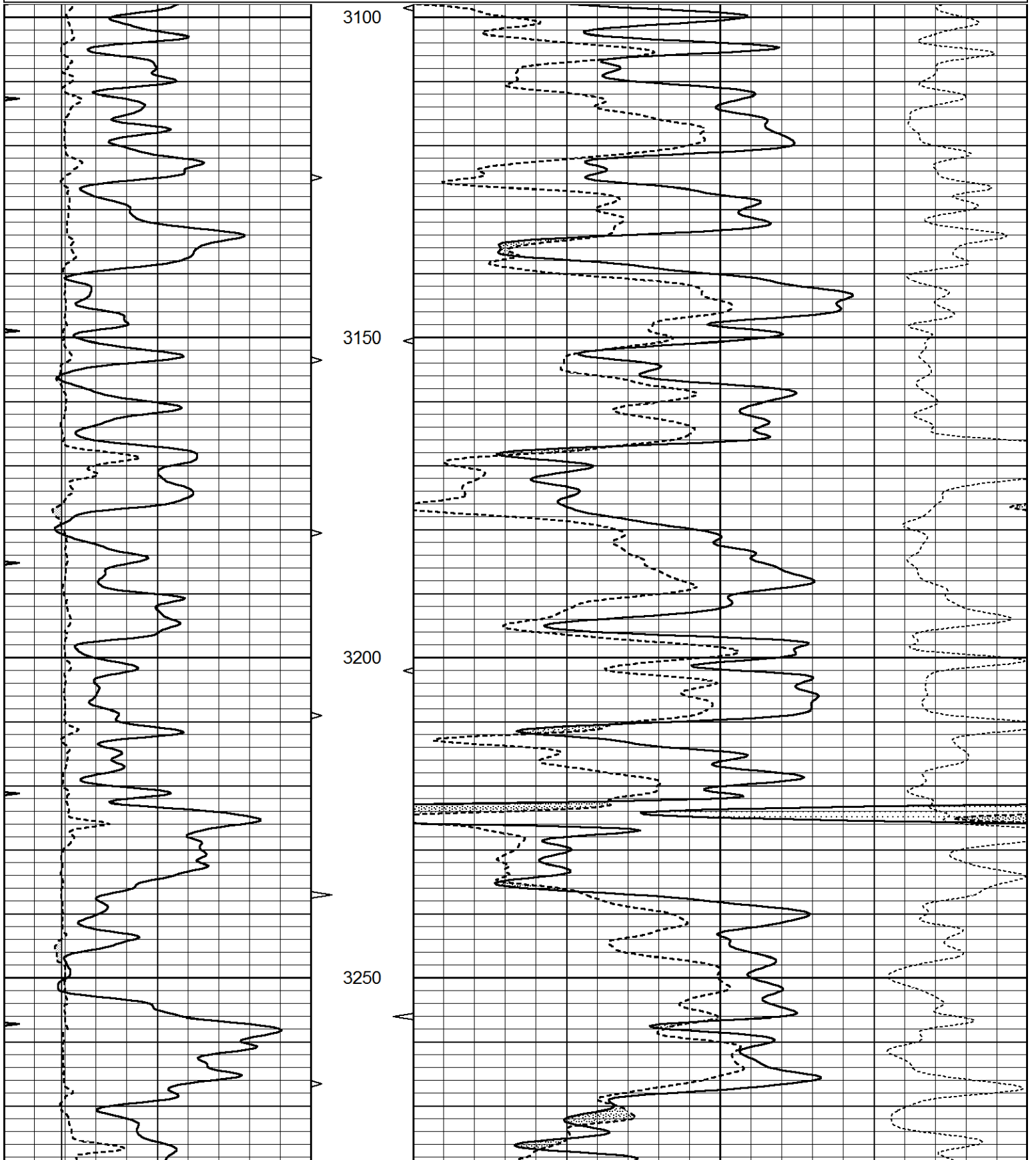
THANK YOU FOR USING ELI WIRELINE HAYS, KANSAS (785) 628-6395  
DIRECTIONS  
EDMOND, KS., 3E. ON HWY 9 TO "RD. 7", 4N. TO "RD. U", 1/4E., N. INTO

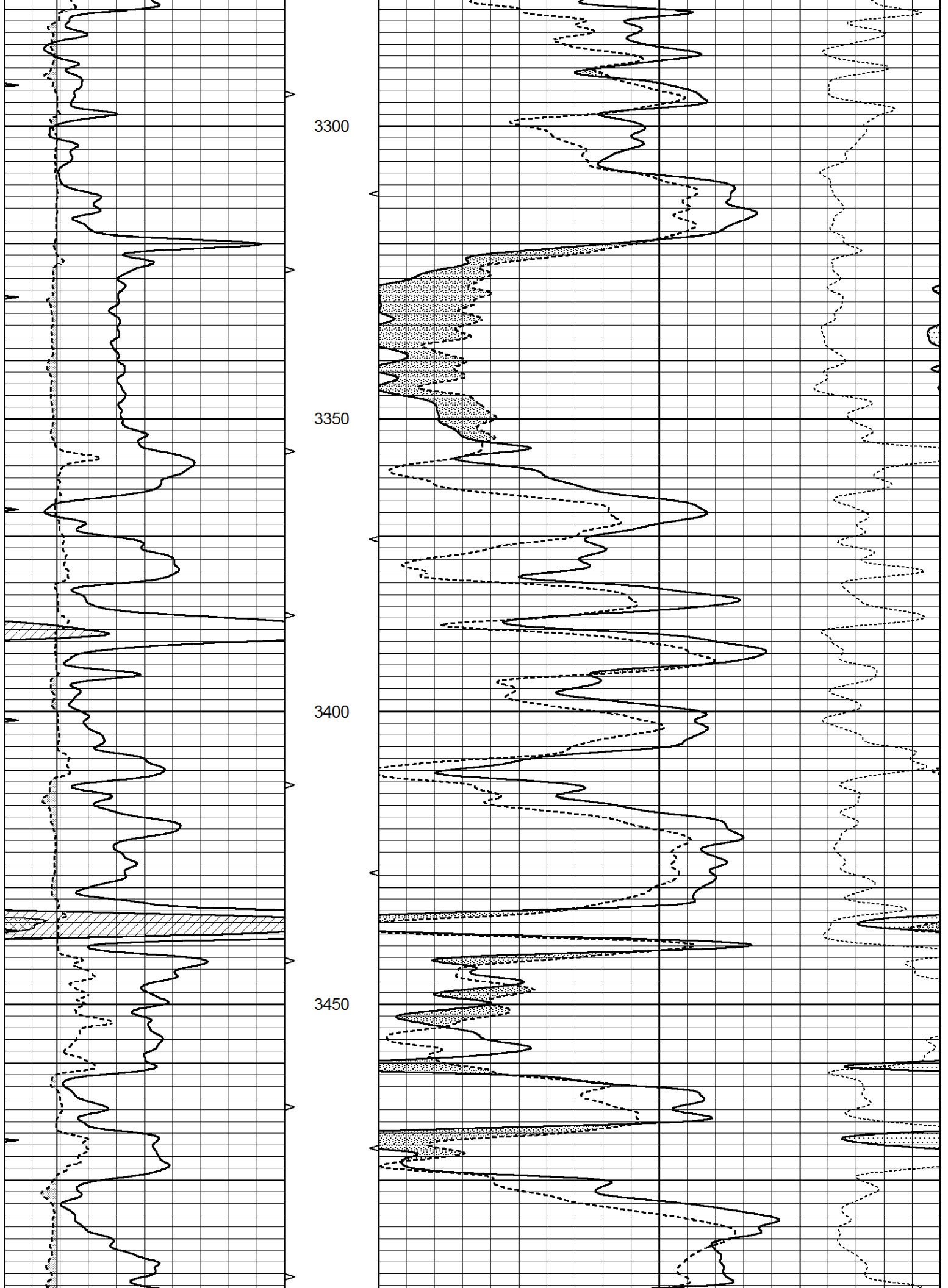


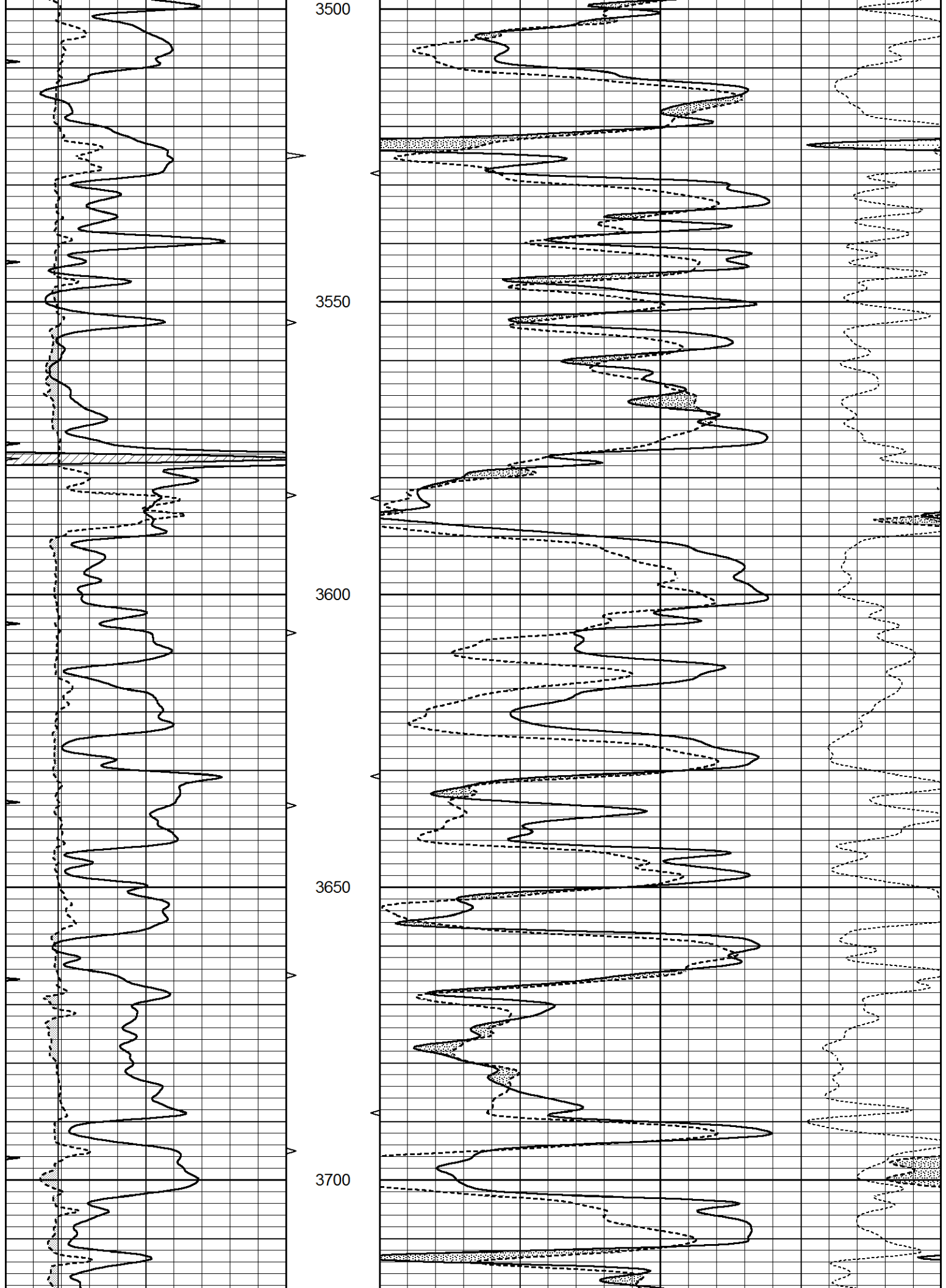
# MAIN SECTION

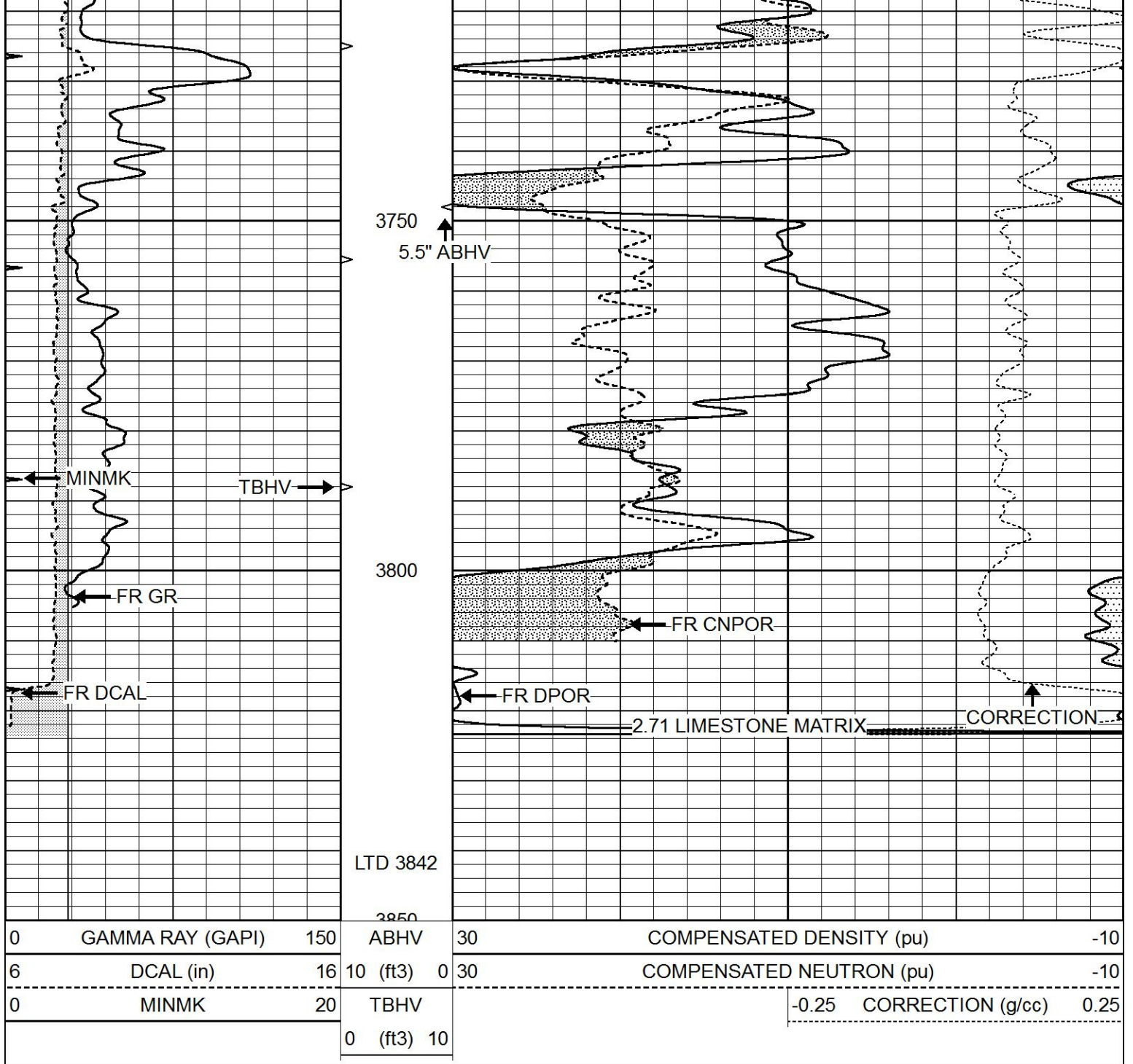
Database File 5850ddn.db  
 Dataset Pathname pass3.2M  
 Presentation Format den\_neu  
 Dataset Creation Mon Dec 20 05:34:23 2021  
 Charted by Depth in Feet scaled 1:240

0	GAMMA RAY (GAPI)	150	ABHV	30	COMPENSATED DENSITY (pu)	-10
6	DCAL (in)	16	10 (ft3)	0	COMPENSATED NEUTRON (pu)	-10
0	MINMK	20	TBHV		-0.25 CORRECTION (g/cc)	0.25
			0 (ft3)	10		





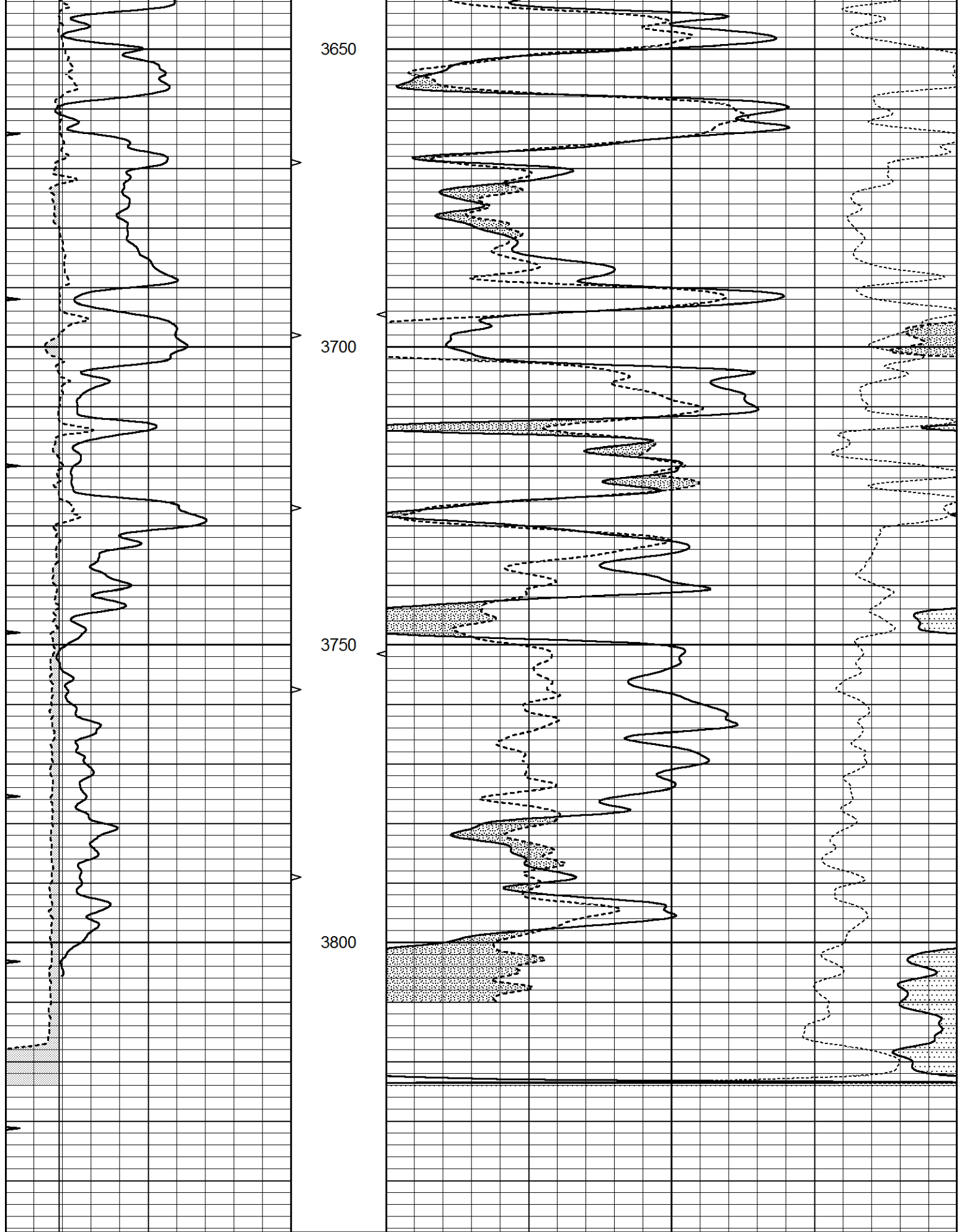




# REPEAT SECTION

Database File 5850ddn.db  
 Dataset Pathname pass2.1R  
 Presentation Format den\_neu  
 Dataset Creation Mon Dec 20 04:47:46 2021  
 Charted by Depth in Feet scaled 1:240

0	GAMMA RAY (GAPI)	150	ABHV	30	COMPENSATED DENSITY (pu)	-10
6	DCAL (in)	16	10 (ft3)	0 30	COMPENSATED NEUTRON (pu)	-10
0	MINMK	20	TBHV		-0.25 CORRECTION (g/cc)	0.25
			0 (ft3)	10		



0	GAMMA RAY (GAPI)	150	ABHV	30	COMPENSATED DENSITY (pu)	-10
6	DCAL (in)	16	10 (ft3)	0 30	COMPENSATED NEUTRON (pu)	-10
0	MINMK	20	TBHV		-0.25 CORRECTION (g/cc)	0.25

## Calibration Report

Database File 5850ddn.db  
 Dataset Pathname pass3.2M  
 Dataset Creation Mon Dec 20 05:34:23 2021

## Dual Induction Calibration Report

Serial-Model: DIL4-GEAR  
 Surface Cal Performed: Mon Dec 20 03:47:01 2021  
 Downhole Cal Performed: Tue Sep 25 17:01:29 2001  
 After Survey Verification Performed: Sat Jun 11 16:07:12 2005

## Surface Calibration

Loop:	Readings			References			Results	
	Air	Loop		Air	Loop		m	b
Deep	0.008	0.666	V	0.000	400.000	mmho/m	520.000	-10.000
Medium	-0.003	0.769	V	0.000	462.500	mmho/m	560.000	-18.000
Internal:	Zero	Cal		Zero	Cal		m	b
Deep	0.013	0.651	V	0.000	400.000	mmho/m	627.541	-8.365
Medium	0.020	0.754	V	0.000	462.500	mmho/m	630.311	-12.549

## Downhole Calibration

Internal:	Readings			References			Results	
	Zero	Cal		Zero	Cal		m	b
Deep	0.000	1.000	mmho/m	0.000	1.000	mmho/m	1.000	0.000
Medium	0.000	1.000	mmho/m	0.000	1.000	mmho/m	1.000	0.000
Shallow	2.525	0.026	V	500.000	2.000	Ohm-m	250.000	-2.000

## After Survey Verification

Internal:	Readings			Targets			Results	
	Zero	Cal		Zero	Cal		m'	b'
Deep	0.000	1.000	mmho/m	0.000	1.000	mmho/m	1.000	0.000
Medium	0.000	1.000	mmho/m	0.000	1.000	mmho/m	1.000	0.000
Shallow	0.000	0.000	Ohm-m	500.000	2.000	Ohm-m	1.000	0.000

## Litho Density Calibration Report

Serial: 004 Model: PRB

## Master Calibration

Performed Tue May 18 11:02:48 2021

	Background	Magnesium	Aluminum	Aluminum+Fe	
Window 1	1187.1	10004.0	3142.5	2810.8	cps
Window 2	1084.9	8556.6	2749.3	2502.4	cps
Window 3	923.1	5129.8	1819.8	1719.3	cps
Window 4	263.5	263.6	259.7	262.8	cps
Long Space	0.0	7471.7	1664.4	1417.5	cps
Short Space	1.5	984.9	645.6	561.2	cps
Rho		1.7100	2.5900	0.0000	g/cc
Pe		2.0000	2.7500	5.7900	

Rib Angle : 44.3 Rib Slope : 0.976 Density/Spine Ratio : 0.564  
 Spine Angle : 74.3 Spine Slope : 3.555 Spine Intercept : -15.6

Before Survey Verification

Performed Wed Dec 31 18:00:00 1969

Window 1	0.0	0.0	0.0	0.0	cps
Window 2	0.0	0.0	0.0	0.0	cps
Window 3	0.0	0.0	0.0	0.0	cps
Window 4	0.0	0.0	0.0	0.0	cps
Long Space	0.0	0.0	0.0	0.0	cps
Short Space	0.0	0.0	0.0	0.0	cps
Measured Rho		0.0000	0.0000	0.0000	g/cc
Measured Correction		0.0000	0.0000	0.0000	g/cc
Measured Pe			0.0000	0.0000	

After Survey Verification

Performed Wed Dec 31 18:00:00 1969

Window 1	0.0	0.0	0.0	0.0	cps
Window 2	0.0	0.0	0.0	0.0	cps
Window 3	0.0	0.0	0.0	0.0	cps
Window 4	0.0	0.0	0.0	0.0	cps
Long Space	0.0	0.0	0.0	0.0	cps
Short Space	0.0	0.0	0.0	0.0	cps
Measured Rho		0.0000	0.0000	0.0000	g/cc
Measured Correction		0.0000	0.0000	0.0000	g/cc
Measured Pe			0.0000	0.0000	

Compensated Neutron Calibration Report

Serial Number: 070808PMC  
Tool Model: NABORS

PRE-SURVEY VERIFICATION

Detector	Readings	Measured	Target
Short Space	cps		
Long Space	cps	pu	pu

POST-SURVEY VERIFICATION

Detector	Readings	Measured	Target
Short Space	cps		
Long Space	cps	pu	pu

Gamma Ray Calibration Report

Serial Number: 070558  
Tool Model: OPEN\_GR  
Performed: Fri Sep 03 05:25:49 2021

Calibrator Value: 1.0 GAPI

Background Reading: 0.0 cps  
Calibrator Reading: 1.0 cps

Sensitivity: 0.2800 GAPI/cps