

MICRO
LOG



Company RAYMOND OIL COMPANY, INC.
Well #12-1 SANSOM
Field WILDCAT
County NORTON State KANSAS

Location: 1089' FSL & 798' FSL
NW - NE - SW - SW
API #: 15-137-20758-0000
Permanent Datum GROUND LEVEL Elevation 2247
Log Measured From KELLY BUSHING 5' A.G.L.
Drilling Measured From KELLY BUSHING
Other Services CDL/CNL DIL
Elevation
SEC 12 TWP 4S RGE 22W
K.B. 2252
D.F. 2250
G.L. 2246

Company	RAYMOND OIL COMPANY, INC.
Well	#12-1 SANSOM
Field	WILDCAT
County	NORTON
State	KANSAS
Date	12/20/21
Run Number	TWO
Depth Driller	3843
Depth Logger	3842
Bottom Logged Interval	3840
Top Log Interval	3100
Casing Driller	8 5/8" @ 260
Casing Logger	260
Bit Size	7 7/8"
Type Fluid in Hole	CHEMICAL MUD
Density / Viscosity	9.2/46
pH / Fluid Loss	10.0/8.8
Source of Sample	FLOWLINE
Rm @ Meas. Temp	1.50 @ 65F
Rmf @ Meas. Temp	1.13 @ 65F
Rmc @ Meas. Temp	1.80 @ 65F
Source of Rmf / Rmc	MEASUREMENT
Rm @ BHT	.848 @ 115F
Time Circulation Stopped	3.5 HOURS
Time Logger on Bottom	5.30 A.M.
Maximum Recorded Temperature	115F
Equipment Number	922339
Location	HAYS, KANSAS
Recorded By	JEFF LUEBBERS
Witnessed By	KIM SHOEMAKER
	ROBERT TURNER

<<< Fold Here >>>

All interpretations are opinions based on inferences from electrical or other measurements and we cannot and do not guarantee the accuracy or correctness of any interpretation, and we shall not, except in the case of gross or willful negligence on our part, be liable or responsible for any loss, costs, damages, or expenses incurred or sustained by anyone resulting from any interpretation made by any of our officers, agents or employees. These interpretations are also subject to our general terms and conditions set out in our current Price Schedule.

15-137-20758-0000 Comments

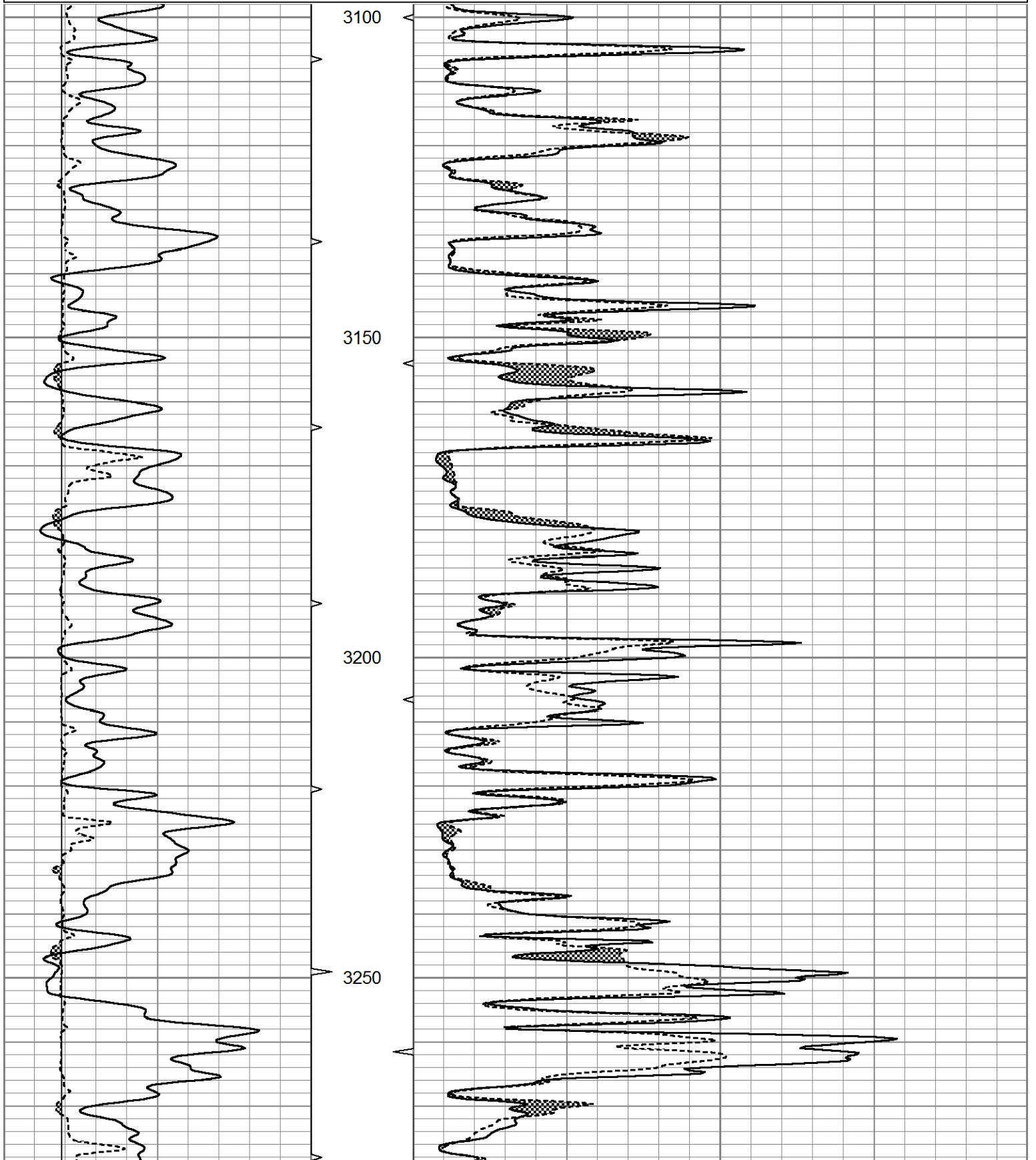
THANK YOU FOR USING ELI WIRELINE HAYS, KANSAS (785) 628-6395
DIRECTIONS
EDMOND, KS., 3E. ON HWY 9 TO "RD. 7", 4N. TO "RD. U", 1/4E., N. INTO

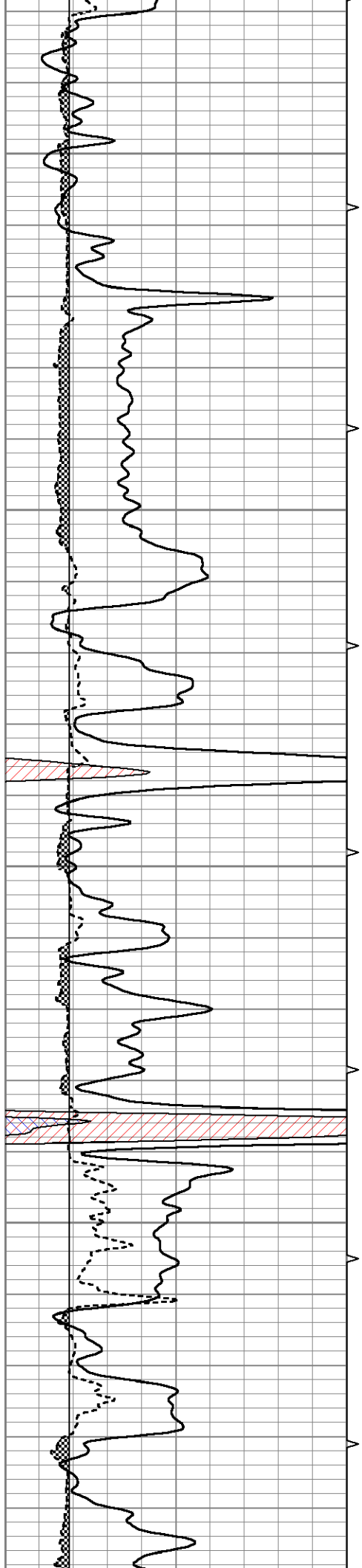


MAIN SECTION

Database File 5850ddn.db
 Dataset Pathname pass6.1
 Presentation Format micro
 Dataset Creation Mon Dec 20 06:14:18 2021
 Charted by Depth in Feet scaled 1:240

0	GR (GAPI)	150	ABHV	0	MEL20 (Ohm-m)	40
6	MELCAL (in)	16	10 (ft3)	0	MEL15 (Ohm-m)	40
			ABHV			
			0 (ft3)	10		



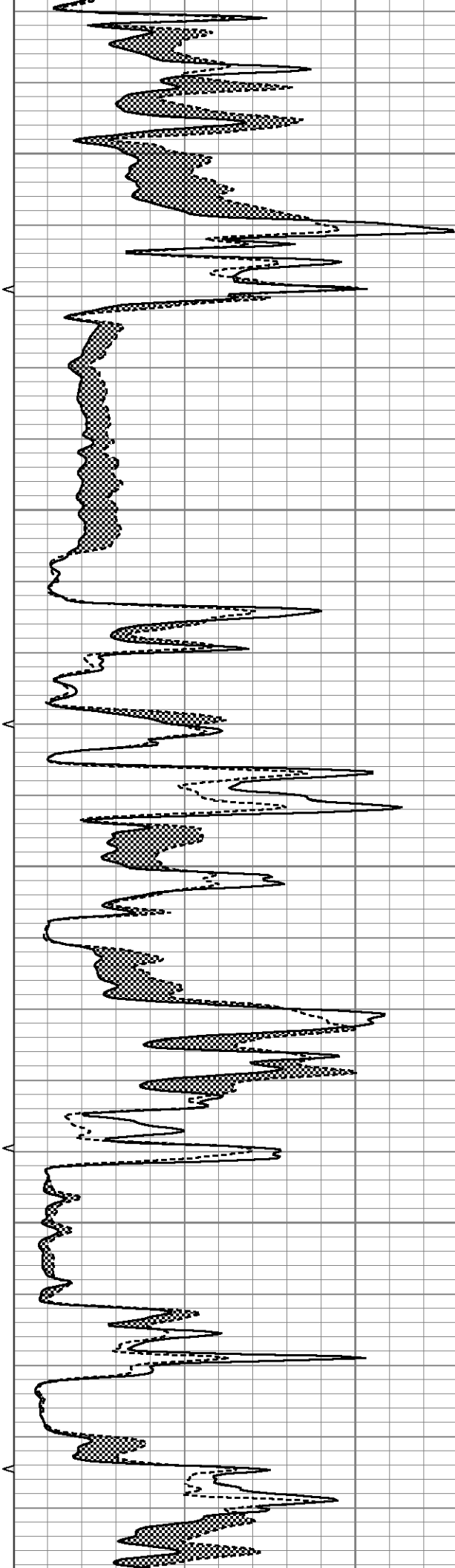


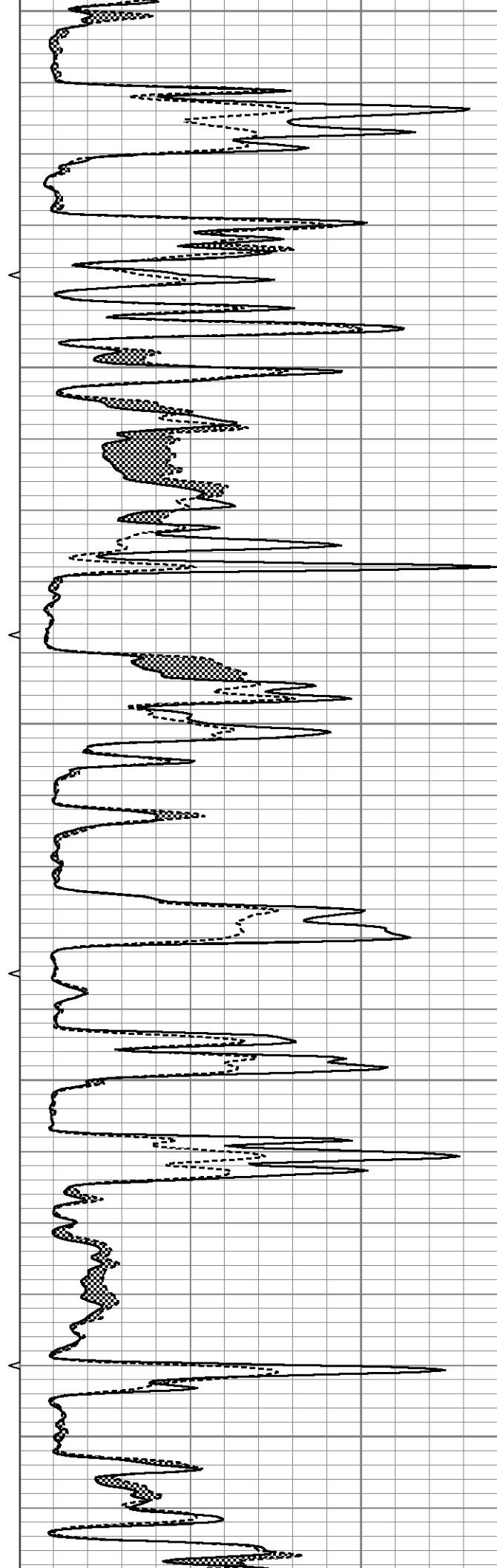
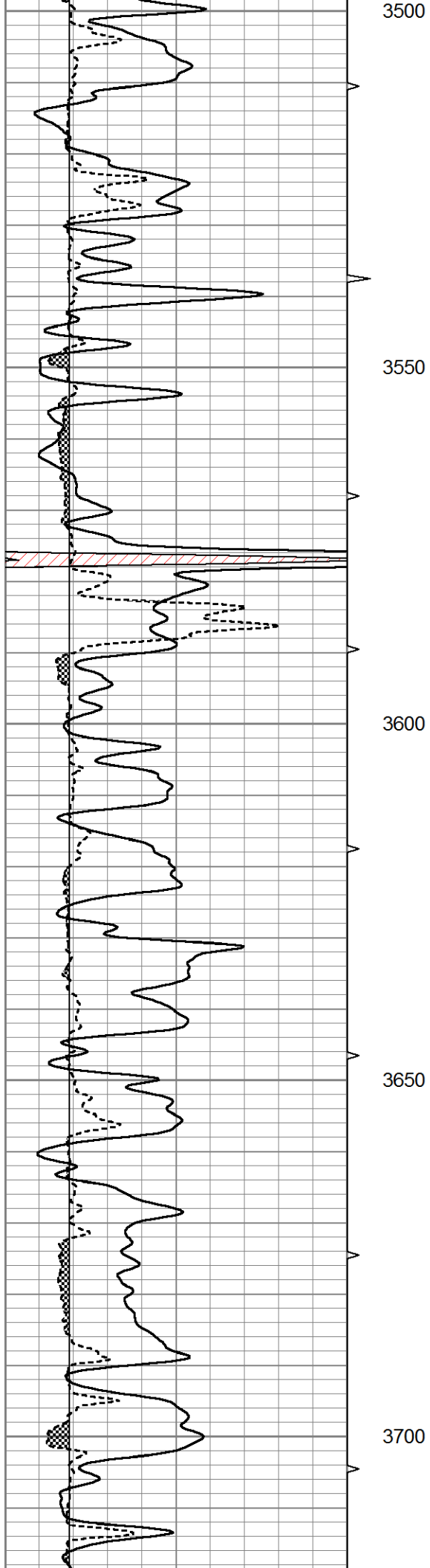
3300

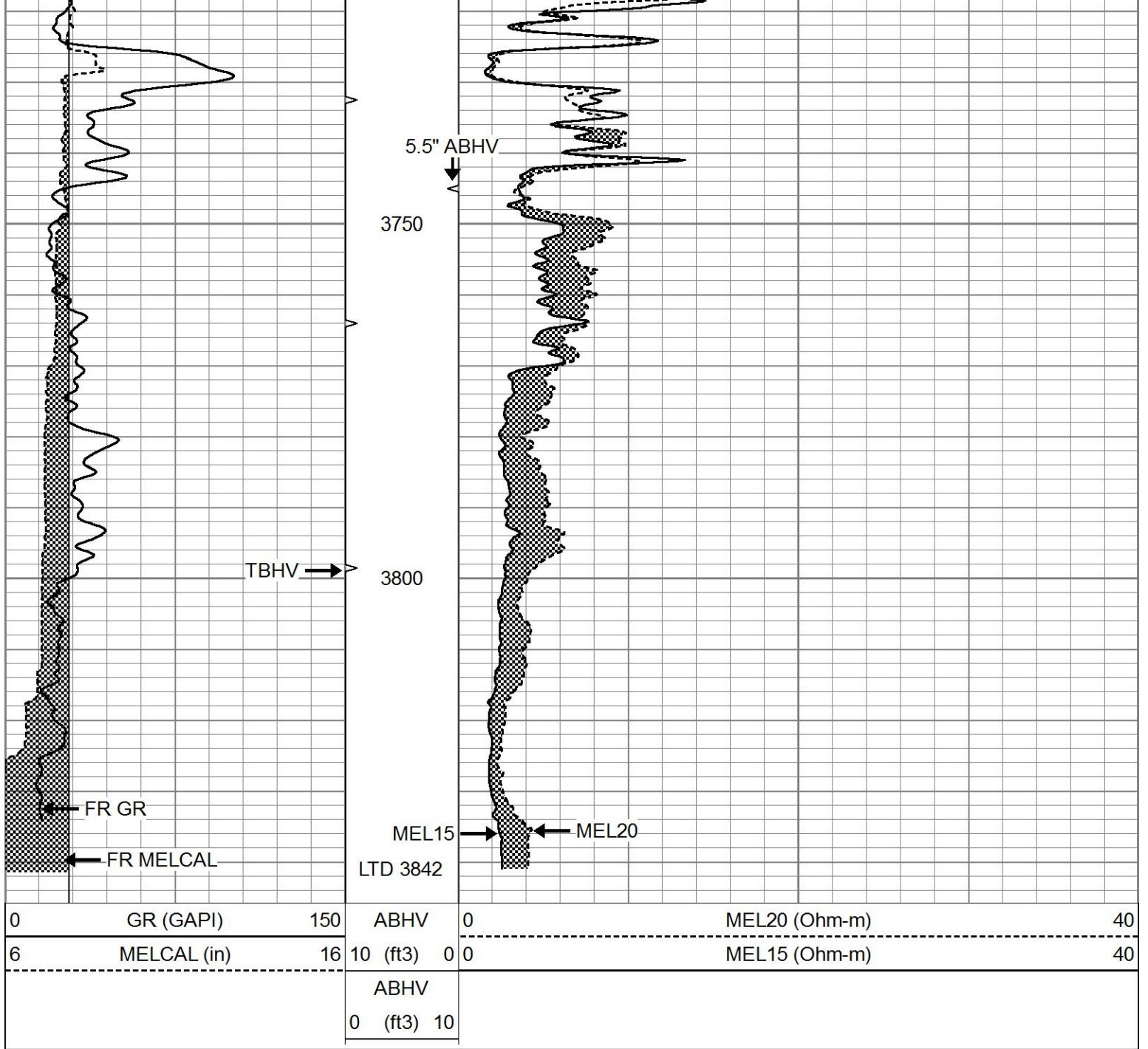
3350

3400

3450



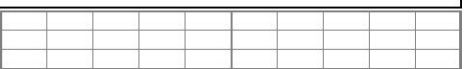
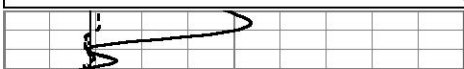


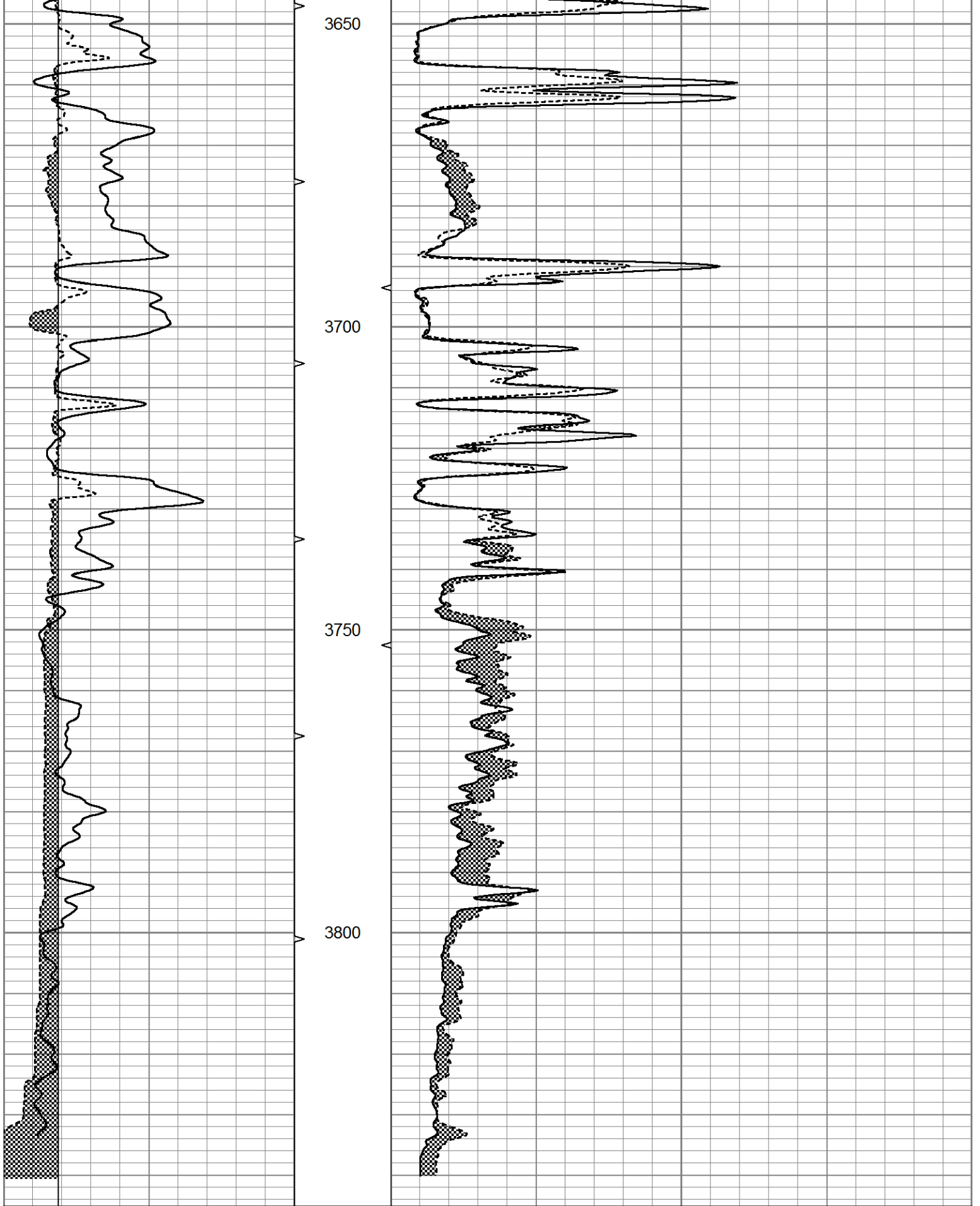


REPEAT SECTION

Database File 5850ddn.db
 Dataset Pathname pass5.2
 Presentation Format micro
 Dataset Creation Mon Dec 20 05:51:47 2021
 Charted by Depth in Feet scaled 1:240

0	GR (GAPI)	150	ABHV	0	MEL20 (Ohm-m)	40
6	MELCAL (in)	16	10 (ft3)	0	MEL15 (Ohm-m)	40
			ABHV			
			0 (ft3)	10		





0	GR (GAPI)	150	ABHV	0	MEL20 (Ohm-m)	40
6	MELCAL (in)	16	10 (ft3)	0 0	MEL15 (Ohm-m)	40
			ABHV			
			0 (ft3)	10		

Calibration Report

Database File 5850ddn.db
 Dataset Pathname pass6.1
 Dataset Creation Mon Dec 20 06:14:18 2021

MICRO Calibration Report

Serial Number: 070910
 Tool Model: ProbeN
 Performed: Sun Dec 19 07:35:04 2021

Caliper Calibration:	Gain=5.479	Offset=-0.438
	Low Cal	High Cal
References	8.000	16.000
Readings	1.540	3.000

1.5" Calibration:	Gain=18.000	Offset=0.800
	Low Cal	High Cal
References	0.000	20.000
Readings	0.000	1.216

2" Calibration:	Gain=42.000	Offset=0.000
	Low Cal	High Cal
References	0.000	20.000
Readings	0.002	1.053

Gamma Ray Calibration Report

Serial Number: 070559
 Tool Model: OPEN_GR
 Performed: Sun Dec 19 07:01:55 2021

Calibrator Value:	1.0	GAPI
Background Reading:	0.0	cps
Calibrator Reading:	1.0	cps
Sensitivity:	0.2800	GAPI/cps