



MIDWEST WIRELINE

# DUAL COMP POROSITY LOG

Company EPOC LLC  
 Well T. Wiebe #31-6  
 Field Hazlett  
 County Butler  
 State Kansas

Company EPOC LLC  
 Well T. Wiebe #31-6  
 Field Hazlett  
 County Butler State Kansas

Location: API #: 15-015-24154-00-00  
 N/2 N/2 NE SE  
 2540 FSL & 660 FEL  
 SEC 31 TWP 23S RGE 5E  
 Permanent Datum Ground Level Elevation 1470  
 Log Measured From Kelly Bushing  
 Drilling Measured From Kelly Bushing  
 Other Services  
 DIL/MEL  
 K.B. 1479  
 D.F.  
 G.L. 1470

Date	11/19/2021						
Run Number	One						
Type Log	CNL/CDL						
Depth Driller	2842						
Depth Logger	2834						
Bottom Logged Interval	2805						
Top Logged Interval	1200						
Type Fluid In Hole	Chemical						
Salinity, PPM CL	1000						
Density	9.3						
Level	Full						
Max. Rec. Temp. F	104						
Operating Rig Time	3 Hours						
Equipment -- Location	P-24 Hays						
Recorded By	T. Martin						
Witnessed By	Bill Stout						
Borehole Record							
Run No.	Bit	From	To	Size	Wgt.	From	To
One	12.25	00	237	8.625	23	00	237
Two	7.875	237	TD				
Casing Record							

<<< Fold Here >>>

All interpretations are opinions based on inferences from electrical or other measurements and Midwest Wireline Services, LLC cannot and does not guarantee the accuracy or correctness of any interpretation, and Midwest Wireline Services, LLC will not be liable or responsible for any loss, costs, damages, or expenses incurred or sustained by anyone resulting from any interpretation made by any of our officers, agents or employees.

Comments

N/A DENOTES NOT AVAILABLE OR NON-APPLICABLE.

Newton, KS, E on 150th to Purity Springs Rd,  
 2.5 S, W into

Log Measured From: Kelly Bushing 9 Ft. Above Permanent Datum

THANK YOU FOR USING MIDWEST WIRELINE LLC  
 785-625-3858

Your Midwest Wireline Crew

Engineer: T. Martin  
 Operator:  
 Operator:  
 Operator:

This Log Record Was Witnessed By

Primary Witness: Bill Stout  
 Secondary Witness: Ray Gilbert  
 Secondary Witness:  
 Secondary Witness:

Sensor	Offset (ft)	Schematic	Description	Length (ft)	O.D. (in)	Weight (lb)
GR	40.08		GR-M&W (233-M&W)	3.00	3.50	50.00
CNLSC CNSSC	37.48 36.73		CNT-M&W (207-MW)	5.50	3.50	100.00
LSD DCAL SSD	28.43 28.42 27.93		CDL-M&W (934-226)	8.50	4.00	250.00
MCAL MI MN	19.83 19.83 19.83		ML-PSIML (PSI-01) GO Micro log tools converted to Simplec electronics	7.58	4.00	65.00
RLL3F RLL3	15.80 15.80					
CILD	8.00		DIL-M&W (1987)	18.50	3.50	220.00
CILM	4.70					
SP	0.20					

Dataset: epoc\_t wiebe #31-6.db: field/well/StkMI/pass3.1  
 Total length: 43.08 ft  
 Total weight: 685.00 lb  
 O.D.: 4.00 in

# Log Variables

DatabaseC:\ProgramData\Warrior\Data\epoc\_t wiebe #31-6.db  
 Dataset field/well/StkMI/pass3.1/\_vars\_

## Top - Bottom

A	BOREID in	BOTTEMP degF	CASEOD in	CASETHCK in	FLUIDDEN g/cc	M	MATRXDEN g/cc
1	7.875	104	5.5	0	1	2	2.71
NPORSEL	PERFS	SNDERR mmho/m	SNDERRM mmho/m	SPSHIFT mV	SRFTEMP degF	SZCOR	TDEPTH ft
Limestone	0	0	0	100	50	Off	2834

## Variable Description

A : Cement Factor (a)  
 BOREID : Borehole I.D.  
 BOTTEMP : Bottom Hole Temperature  
 CASEOD : Casing O.D.  
 CASETHCK : Casing Thickness  
 FLUIDDEN : Fluid Density  
 M : Cement Exp (m)  
 MATRXDEN : Matrix Density

NPORSEL : Neutron Porosity Curve Select  
 PERFS : Perforation Flag  
 SNDERR : Deep Sonde Error Correction  
 SNDERRM : Medium Sonde Error Correction  
 SPSHIFT : S.P. Baseline Offset  
 SRFTEMP : Surface Temperature  
 SZCOR : CN Size Cor. ?  
 TDEPTH : Total Depth



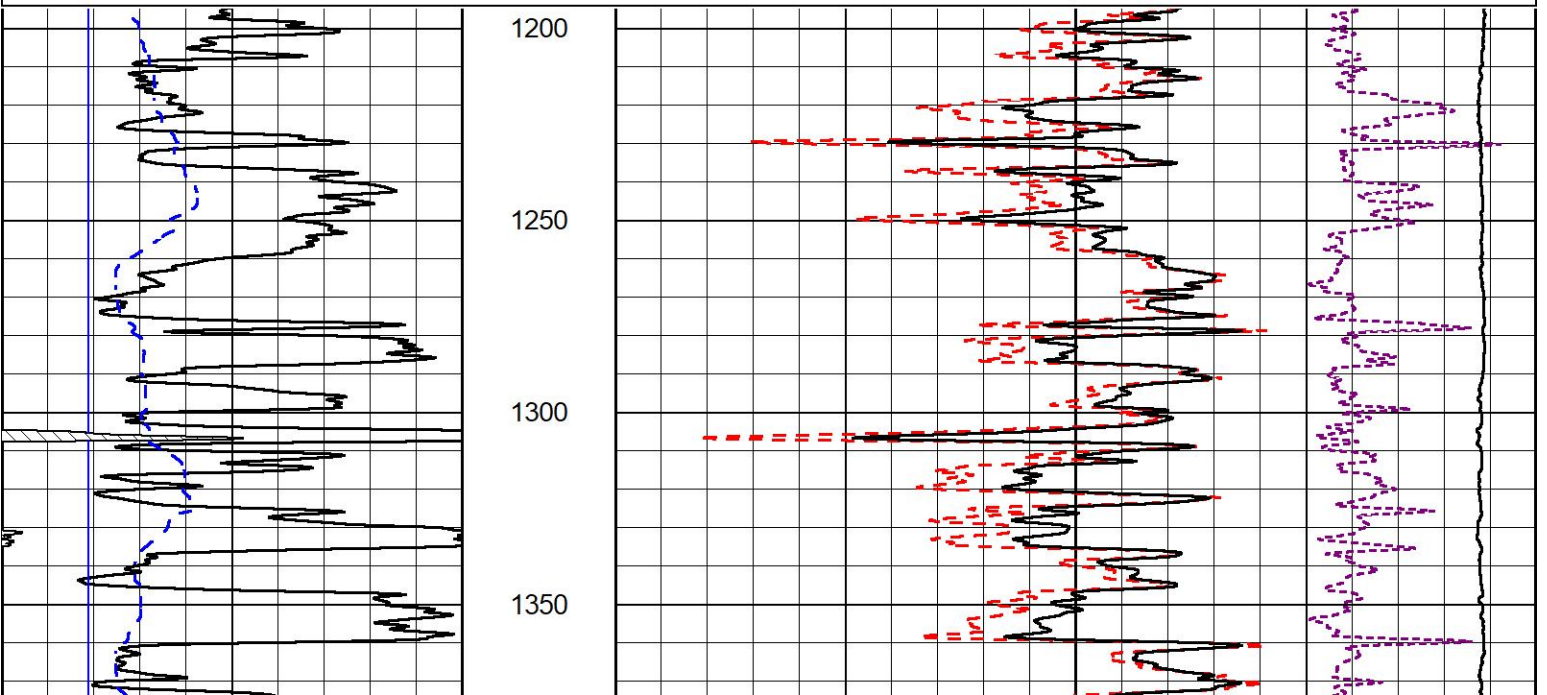
## 2" SCALE BULK DENSITY

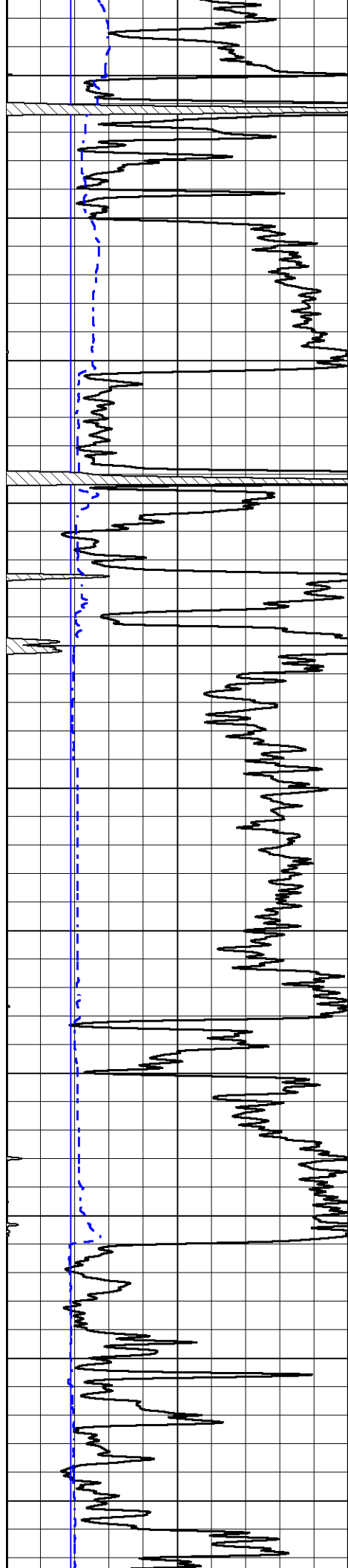
### MAIN PASS

Database File epoc\_t wiebe #31-6.db  
 Dataset Pathname StkMI/pass3.3  
 Presentation Format \_cdl  
 Dataset Creation Fri Nov 19 16:00:02 2021  
 Charted by Depth in Feet scaled 1:600

0	Gamma Ray (GAPI)	150
6	Caliper (in)	16

30	Compensated Density (pu)	-10
2	Bulk Density (g/cc)	3
15000	Line Tension (lb)	0
-0.25	Correction (g/cc)	0.25





1400

1450

1500

1550

1600

1650

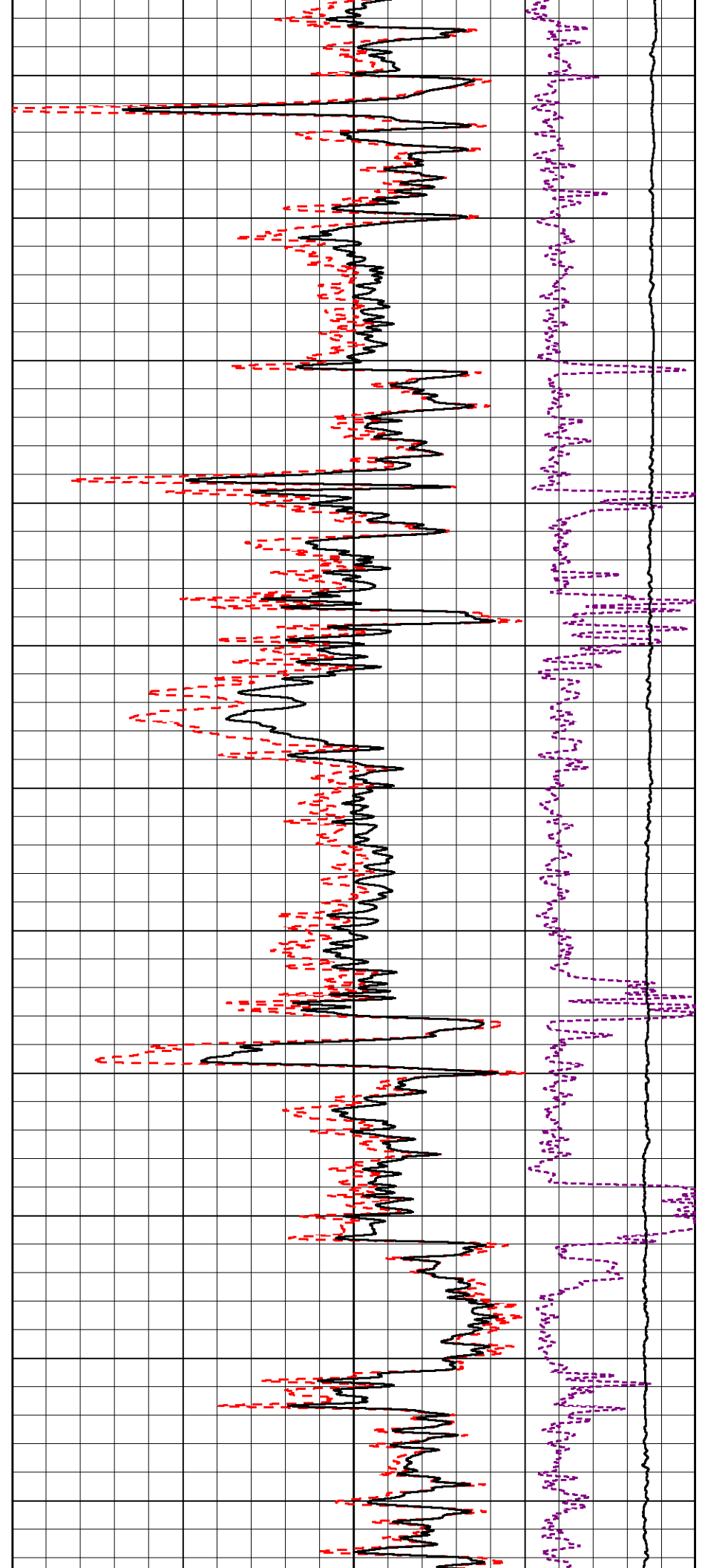
1700

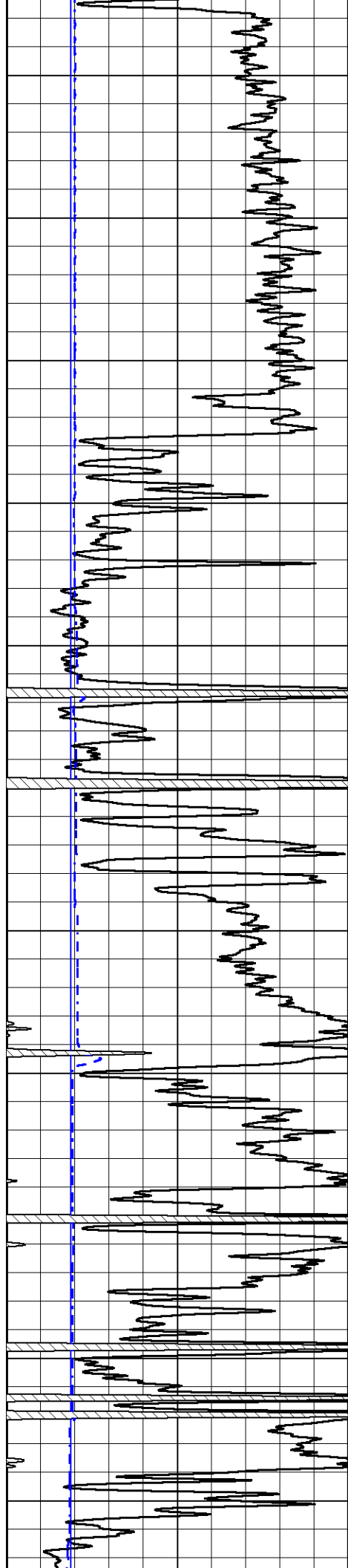
1750

1800

1850

1900





1950

2000

2050

2100

2150

2200

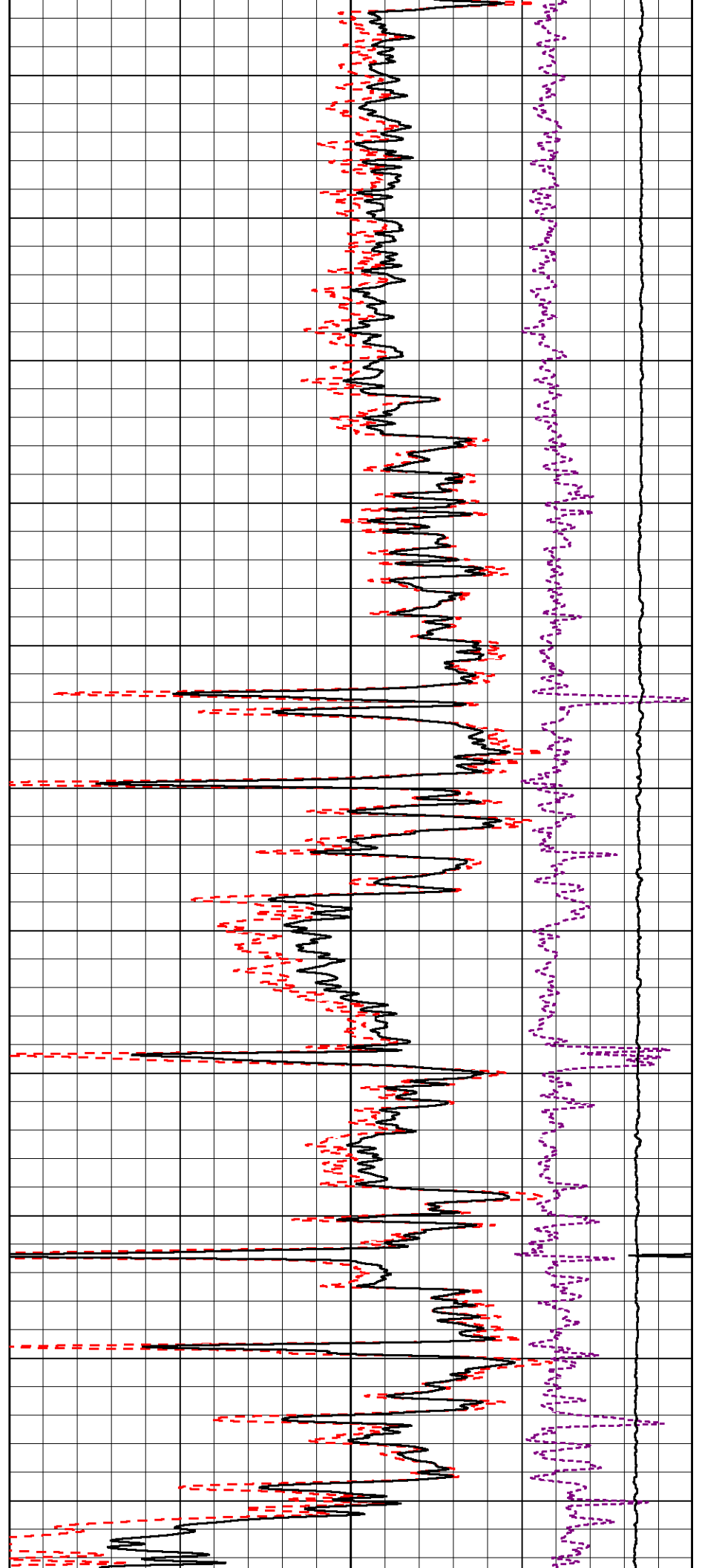
2250

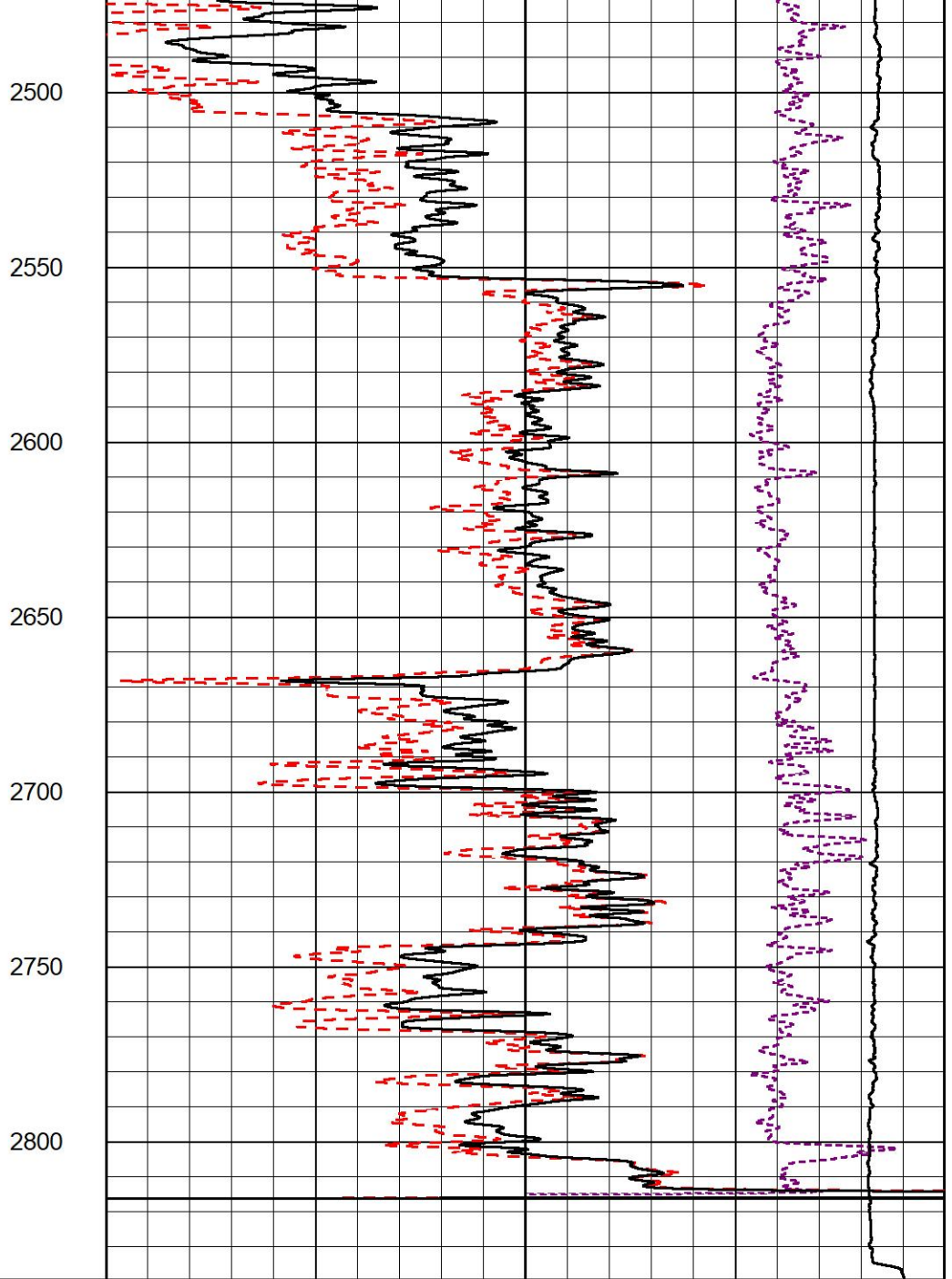
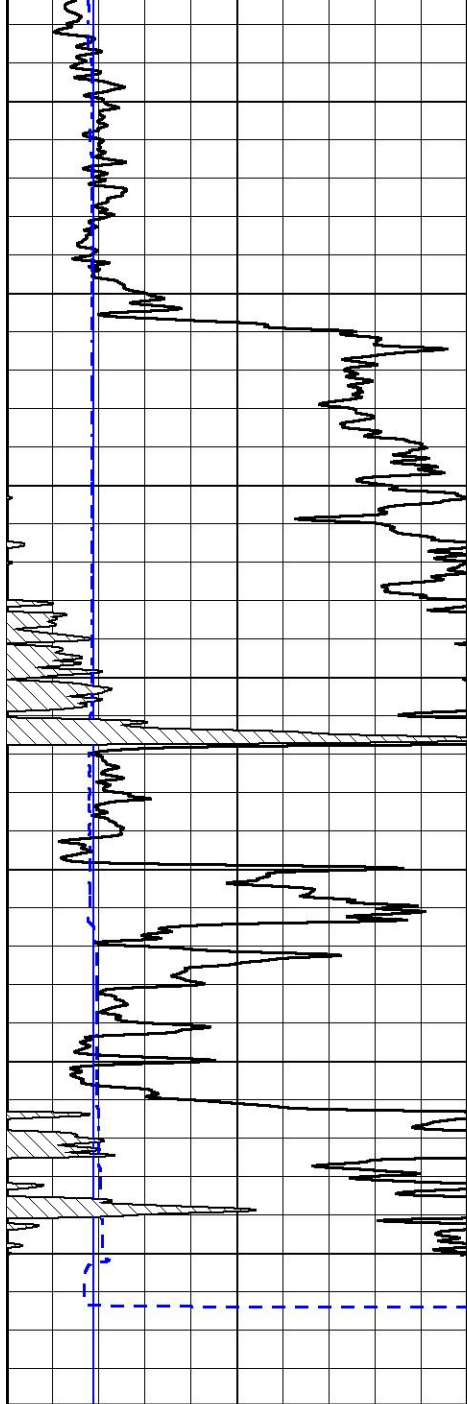
2300

2350

2400

2450





0	Gamma Ray (GAPI)	150
6	Caliper (in)	16

30	Compensated Density (pu)	-10
2	Bulk Density (g/cc)	3
15000	Line Tension (lb)	0
-0.25	Correction (g/cc)	0.25



## DETAIL SECTION

### MAIN PASS

Database File      epoc\_t wiebe #31-6.db  
 Dataset Pathname    StkMI/pass3.1  
 Presentation Format    \_CNDLS~1  
 Dataset Creation      Fri Nov 19 16:12:56 2021  
 Charted by            Depth in Feet scaled 1:240

0	Gamma Ray (GAPI)	150
6	Caliper (in)	16

30	Compensated Neutron (pu)	-10
30	Compensated Density (pu)	-10

10000

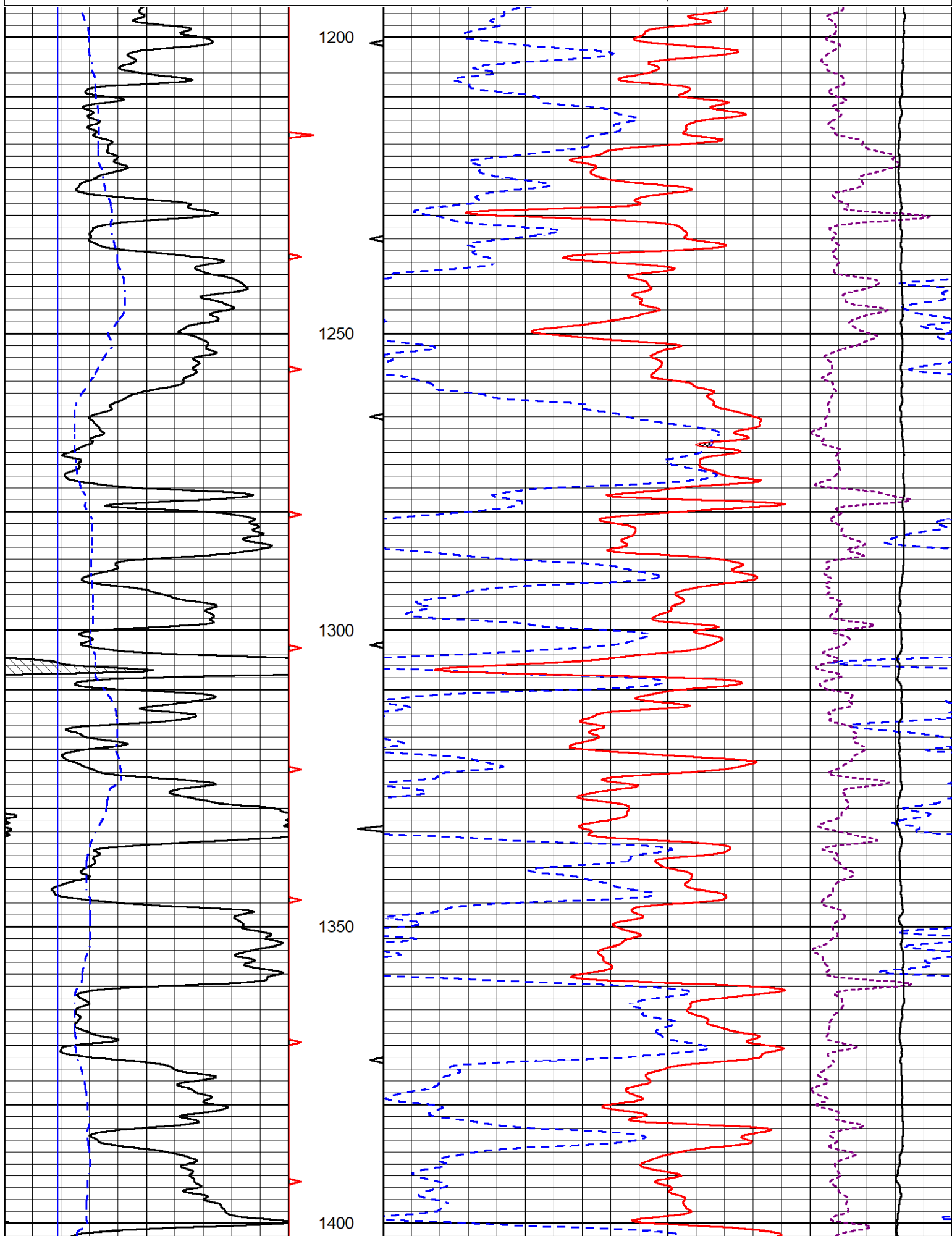
Line Tension (lb)

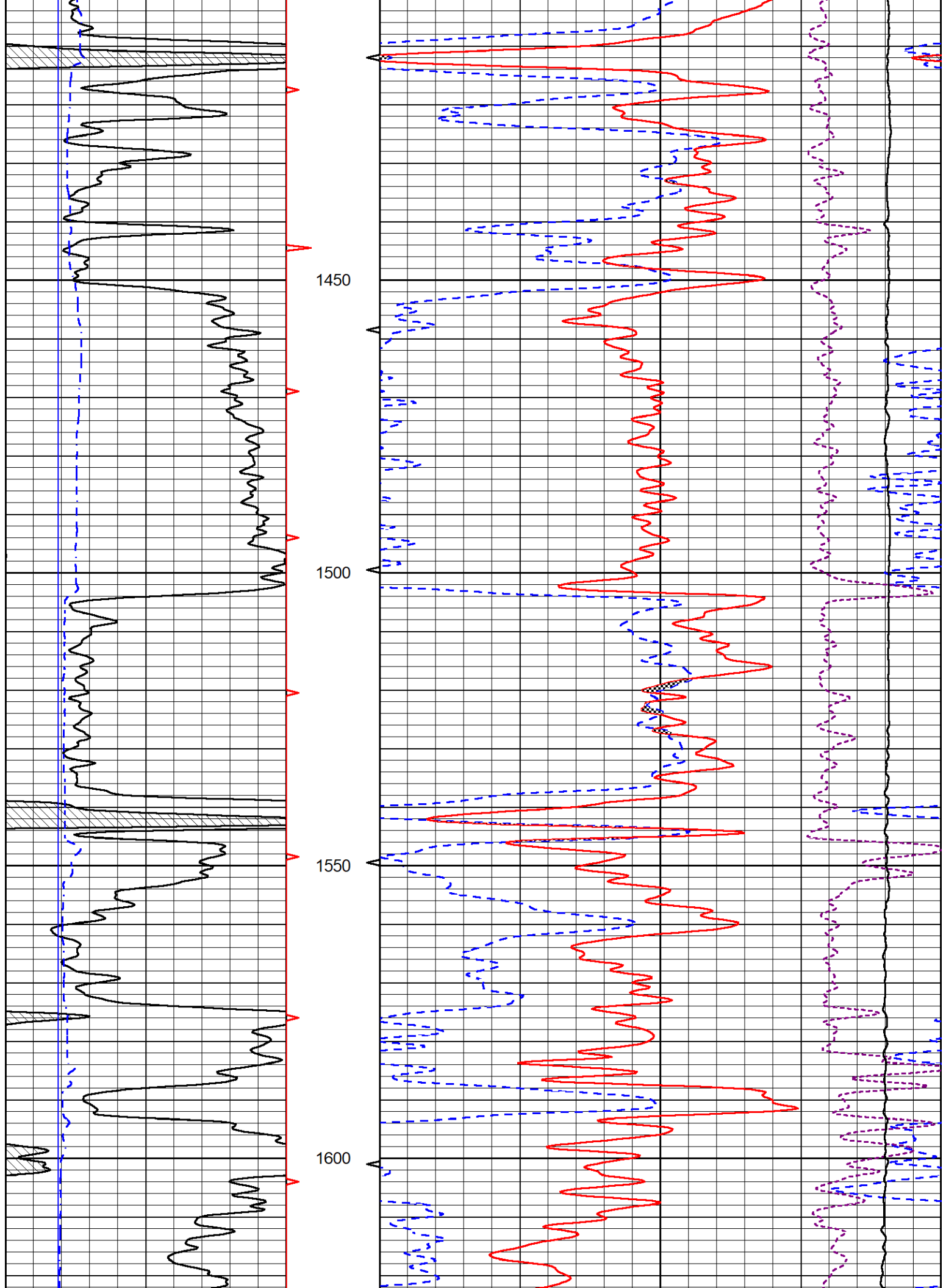
0

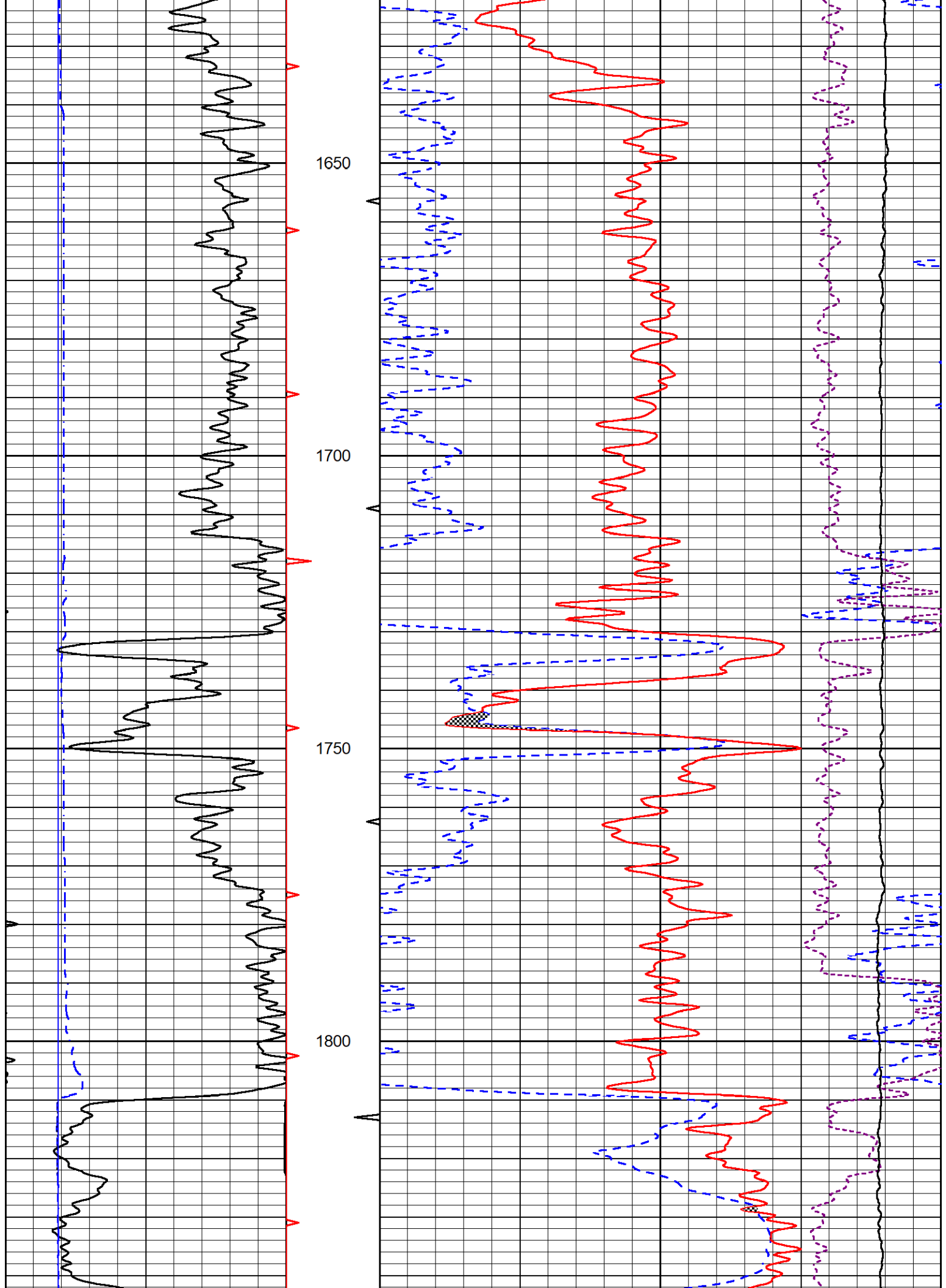
-0.25

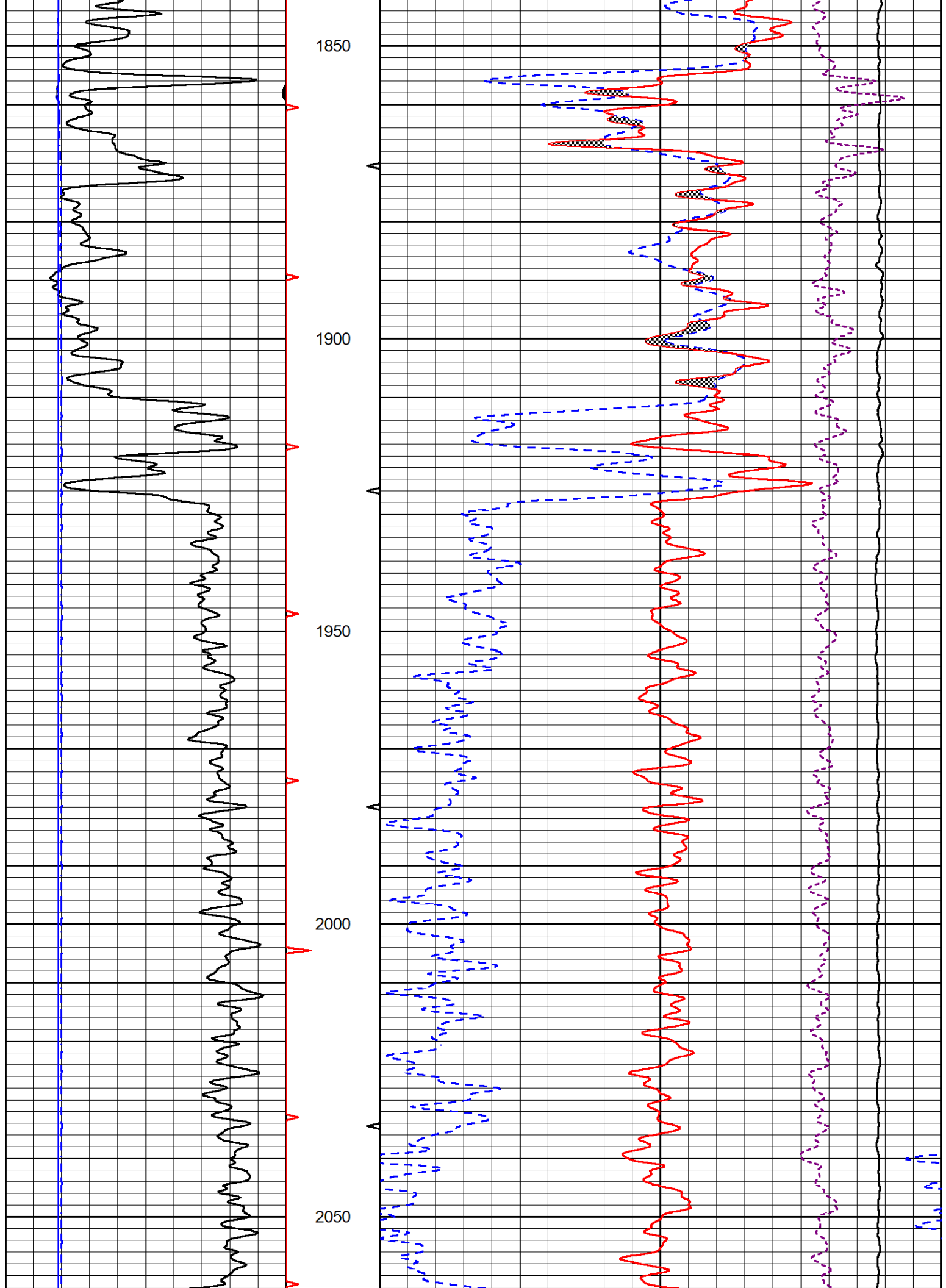
Correction (g/cc)

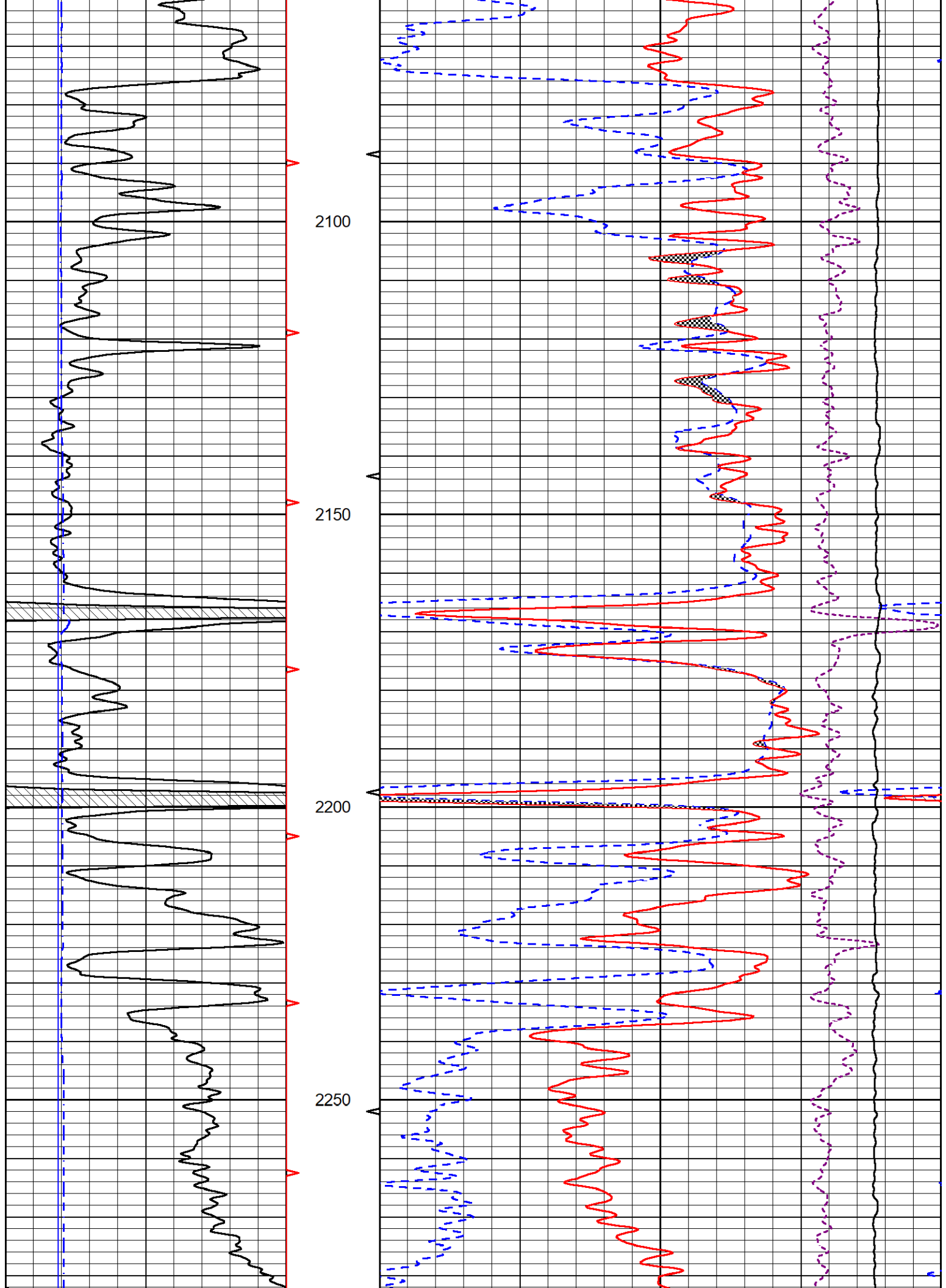
0.25

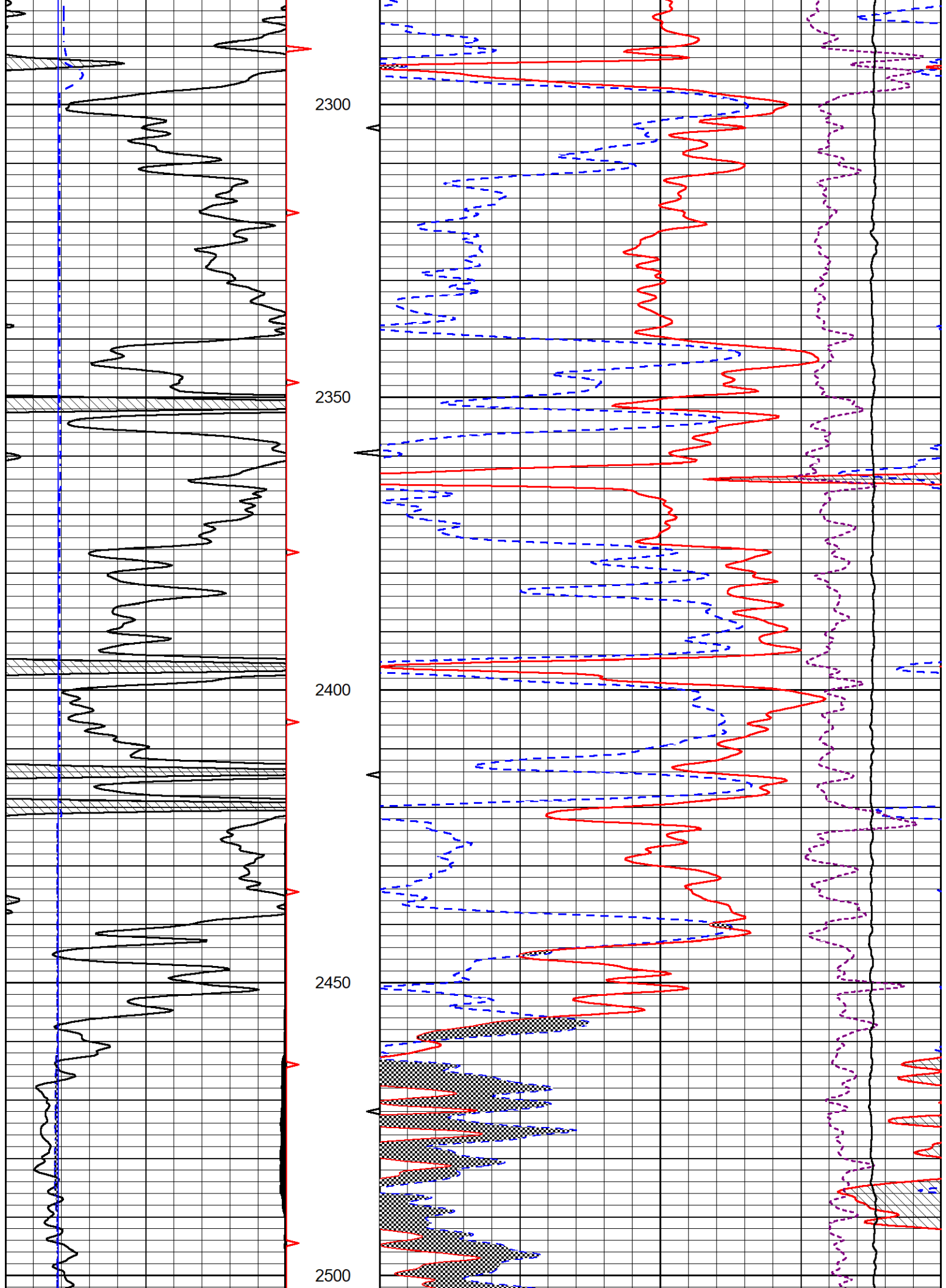


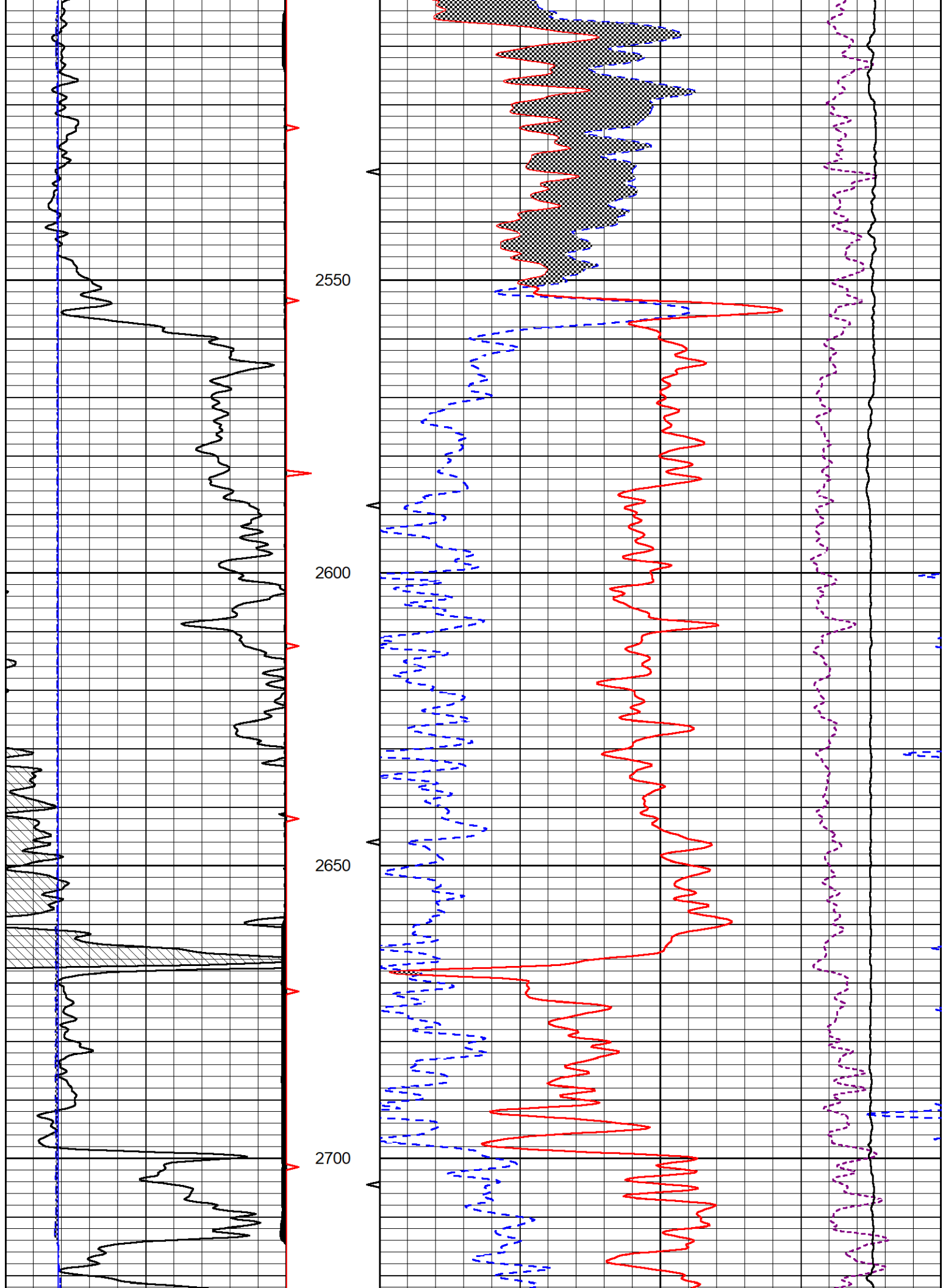


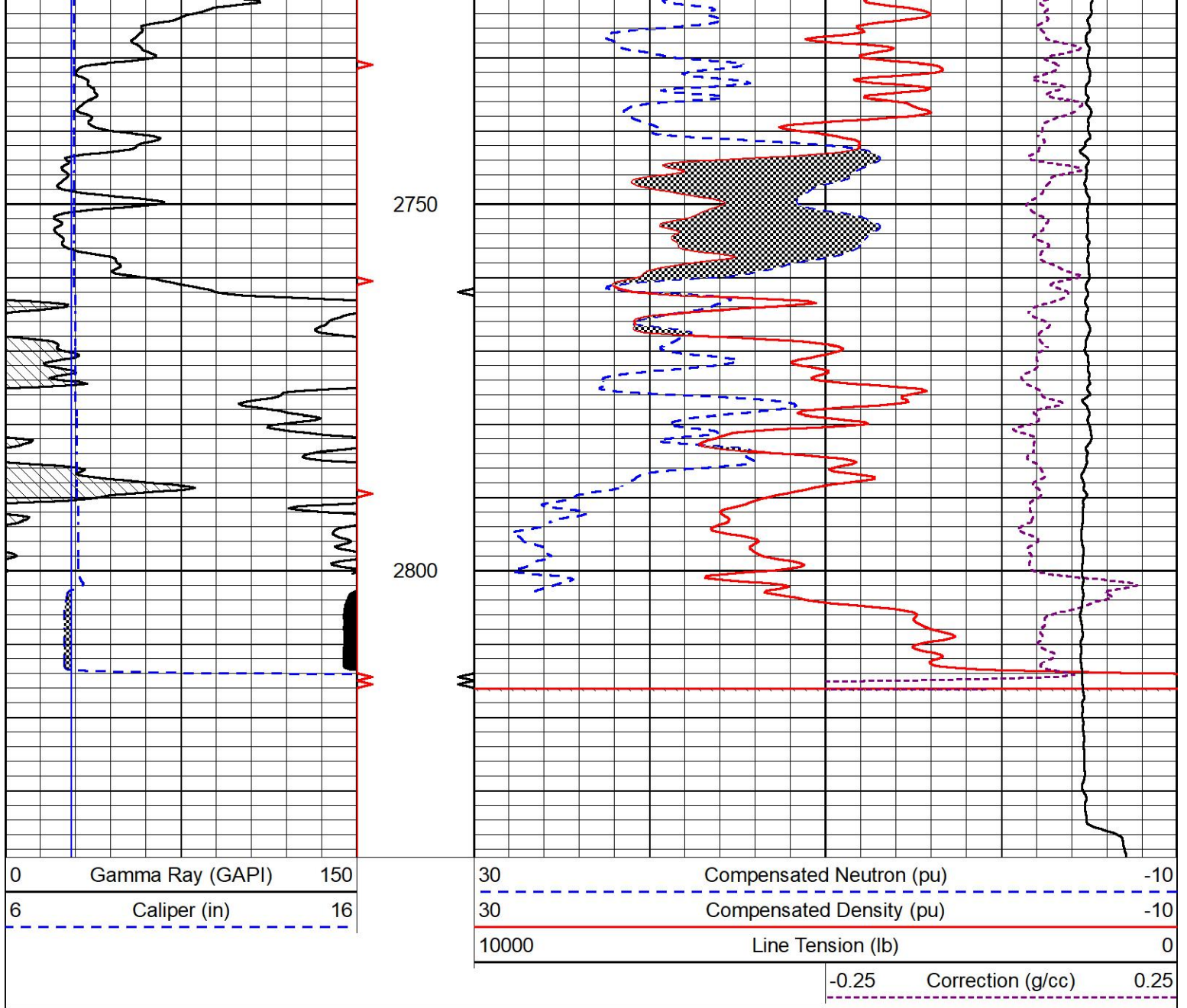








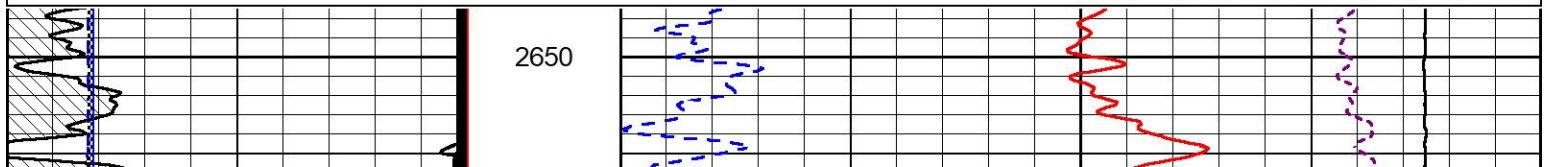
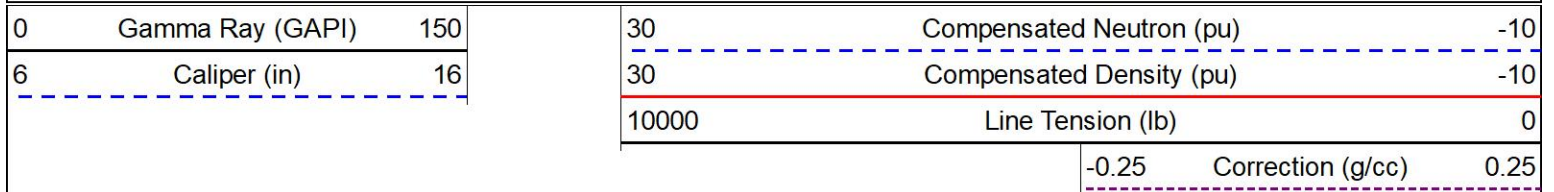


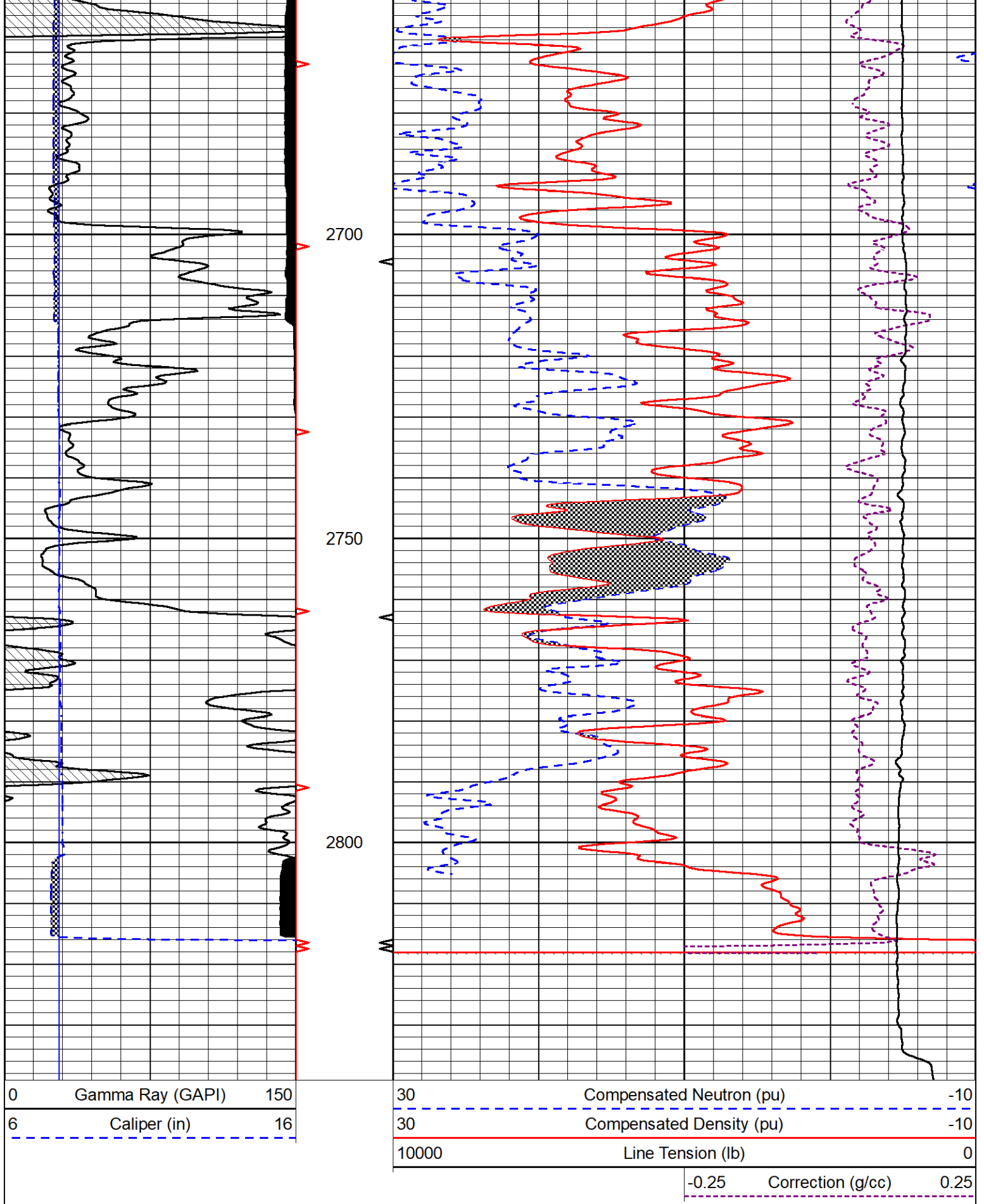


# REPEAT SECTION

## REPEAT PASS

Database File      epc\_t wiebe #31-6.db  
 Dataset Pathname    StkMI/pass2.1  
 Presentation Format    \_CNDLS~1  
 Dataset Creation      Fri Nov 19 15:48:37 2021  
 Charted by            Depth in Feet scaled 1:240





Company EPOC LLC  
 Well T. Wiebe #31-6  
 Field Hazlett



MIDWEST WIRELINE

Field

Address

County

Butler

State

Kansas