



MIDWEST WIRELINE

**DUAL COMP POROSITY
MICRO & DUAL IND LOG**

Company EPOC LLC
Well T. Wiebe #31-6
Field Hazlett
County Butler
State Kansas

Company EPOC LLC
Well T. Wiebe #31-6
Field Hazlett
County Butler State Kansas

Location: API #: 15-015-24154-00-00
N/2 N/2 NE SE
2540 FSL & 660 FEL
SEC 31 TWP 23S RGE 5E
Permanent Datum Ground Level Elevation 1470
Log Measured From Kelly Bushing
Drilling Measured From Kelly Bushing
Other Services
None
K.B. 1479
D.F.
G.L. 1470

Date	11/19/2021						
Run Number	One						
Type Log	CNL/CDL/ML/DIL						
Depth Driller	2842						
Depth Logger	2834						
Bottom Logged Interval	2833						
Top Logged Interval	1200						
Type Fluid In Hole	Chemical						
Salinity, PPM CL	1000						
Density	9.3						
Level	Full						
Max. Rec. Temp. F	104						
Operating Rig Time	3 Hours						
Equipment -- Location	P-24 Hays						
Recorded By	T. Martin						
Witnessed By	Bill Stout						
Borehole Record							
Run No.	Bit	From	To	Size	Wgt.	From	To
One	12.25	00	237	8.625	23	00	237
Two	7.875	237	TD				
Casing Record							
Witnessed By			Ray Gilbert				

<<< Fold Here >>>

All interpretations are opinions based on inferences from electrical or other measurements and Midwest Wireline LLC cannot and does not guarantee the accuracy or correctness of any interpretation, and Midwest Wireline LLC will not be liable or responsible for any loss, costs, damages, or expenses incurred or sustained by anyone resulting from any interpretation made by any of our officers, agents or employees.

Comments

N/A DENOTES NOT AVAILABLE OR NON-APPLICABLE.

Newton, KS, E on 150th to Purity Springs Rd,
2.5 S, W into

Log Measured From: Kelly Bushing 9 Ft. Above Permanent Datum

THANK YOU FOR USING MIDWEST WIRELINE LLC
785-625-3858

Your Midwest Wireline Crew

Engineer: T. Martin
Operator:
Operator:
Operator:

This Log Record Was Witnessed By

Primary Witness: Bill Stout
Secondary Witness: Ray Gilbert
Secondary Witness:
Secondary Witness:

Sensor	Offset (ft)	Schematic	Description	Length (ft)	O.D. (in)	Weight (lb)
GR	40.08		GR-M&W (233-M&W)	3.00	3.50	50.00
CNLSC CNSSC	37.48 36.73		CNT-M&W (207-MW)	5.50	3.50	100.00
LSD DCAL SSD	28.43 28.42 27.93		CDL-M&W (934-226)	8.50	4.00	250.00
MCAL MI MN	19.83 19.83 19.83		ML-PSIML (PSI-01) GO Micro log tools converted to Simplec electronics	7.58	4.00	65.00
RLL3F RLL3	15.80 15.80					
CILD	8.00		DIL-M&W (1987)	18.50	3.50	220.00
CILM	4.70					
SP	0.20					

Dataset: epoc_t wiebe #31-6.db: field/well/StkMI/pass3.1
 Total length: 43.08 ft
 Total weight: 685.00 lb
 O.D.: 4.00 in

Log Variables

DatabaseC:\ProgramData\Warrior\Data\epoc_t wiebe #31-6.db
 Dataset field/well/StkMI/pass3.1/_vars_

Top - Bottom

A	BOREID in	BOTTEMP degF	CASEOD in	CASETHCK in	FLUIDDEN g/cc	M	MATRXDEN g/cc
1	7.875	104	5.5	0	1	2	2.71
NPORSEL	PERFS	SNDERR mmho/m	SNDERRM mmho/m	SPSHIFT mV	SRFTEMP degF	SZCOR	TDEPTH ft
Limestone	0	0	0	100	50	Off	2834

Variable Description

A : Cement Factor (a)
 BOREID : Borehole I.D.
 BOTTEMP : Bottom Hole Temperature
 CASEOD : Casing O.D.
 CASETHCK : Casing Thickness
 FLUIDDEN : Fluid Density
 M : Cement Exp (m)
 MATRXDEN : Matrix Density

NPORSEL : Neutron Porosity Curve Select
 PERFS : Perforation Flag
 SNDERR : Deep Sonde Error Correction
 SNDERRM : Medium Sonde Error Correction
 SPSHIFT : S.P. Baseline Offset
 SRFTEMP : Surface Temperature
 SZCOR : CN Size Cor. ?
 TDEPTH : Total Depth

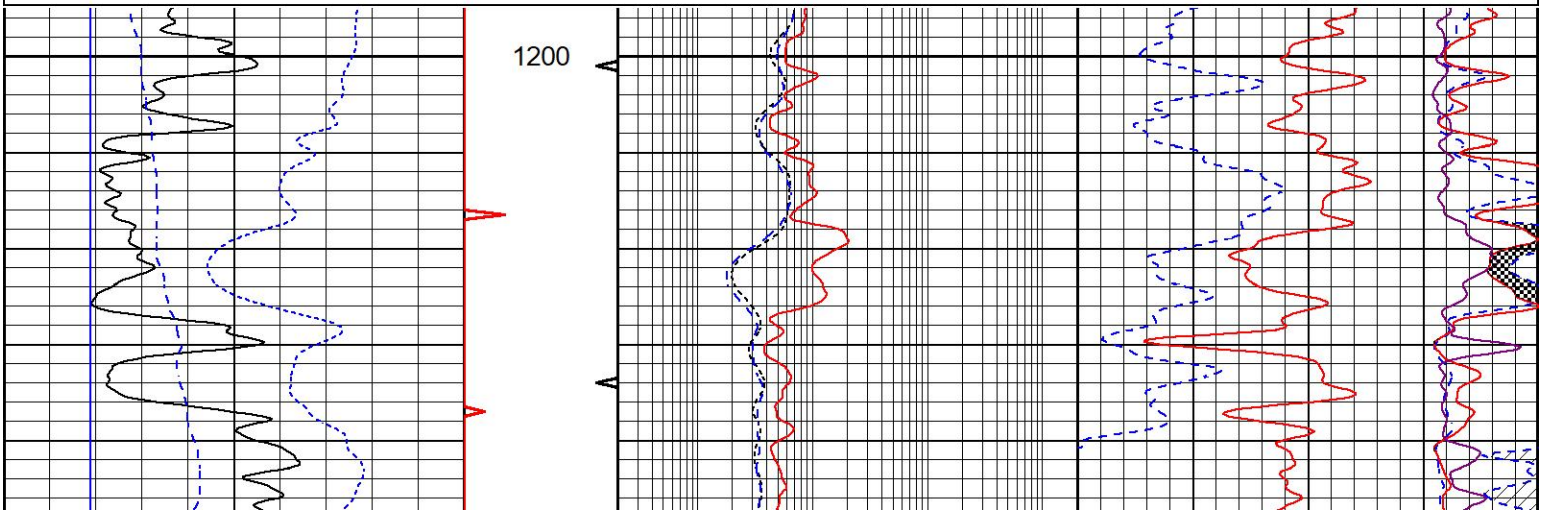


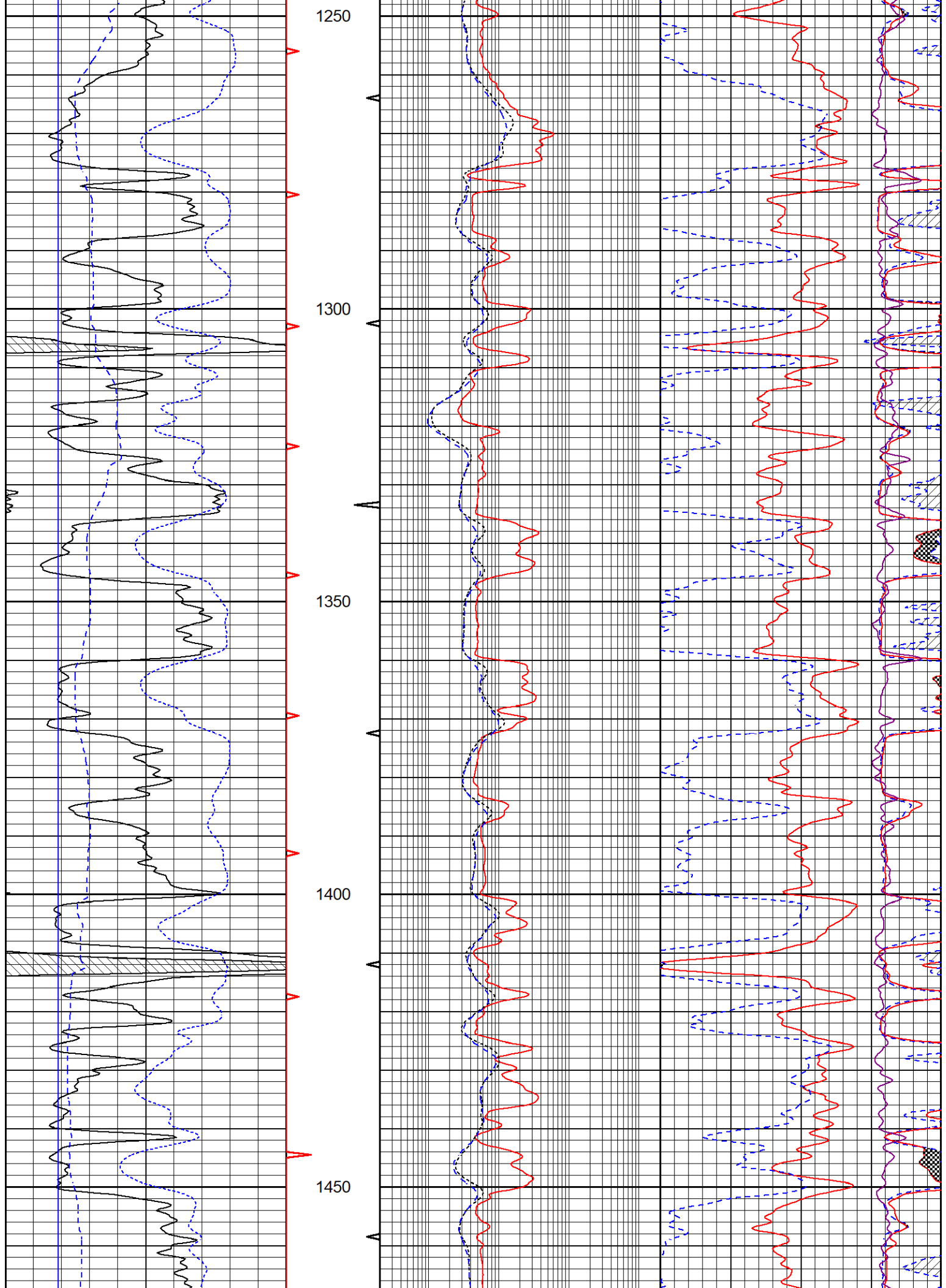
DETAIL SECTION

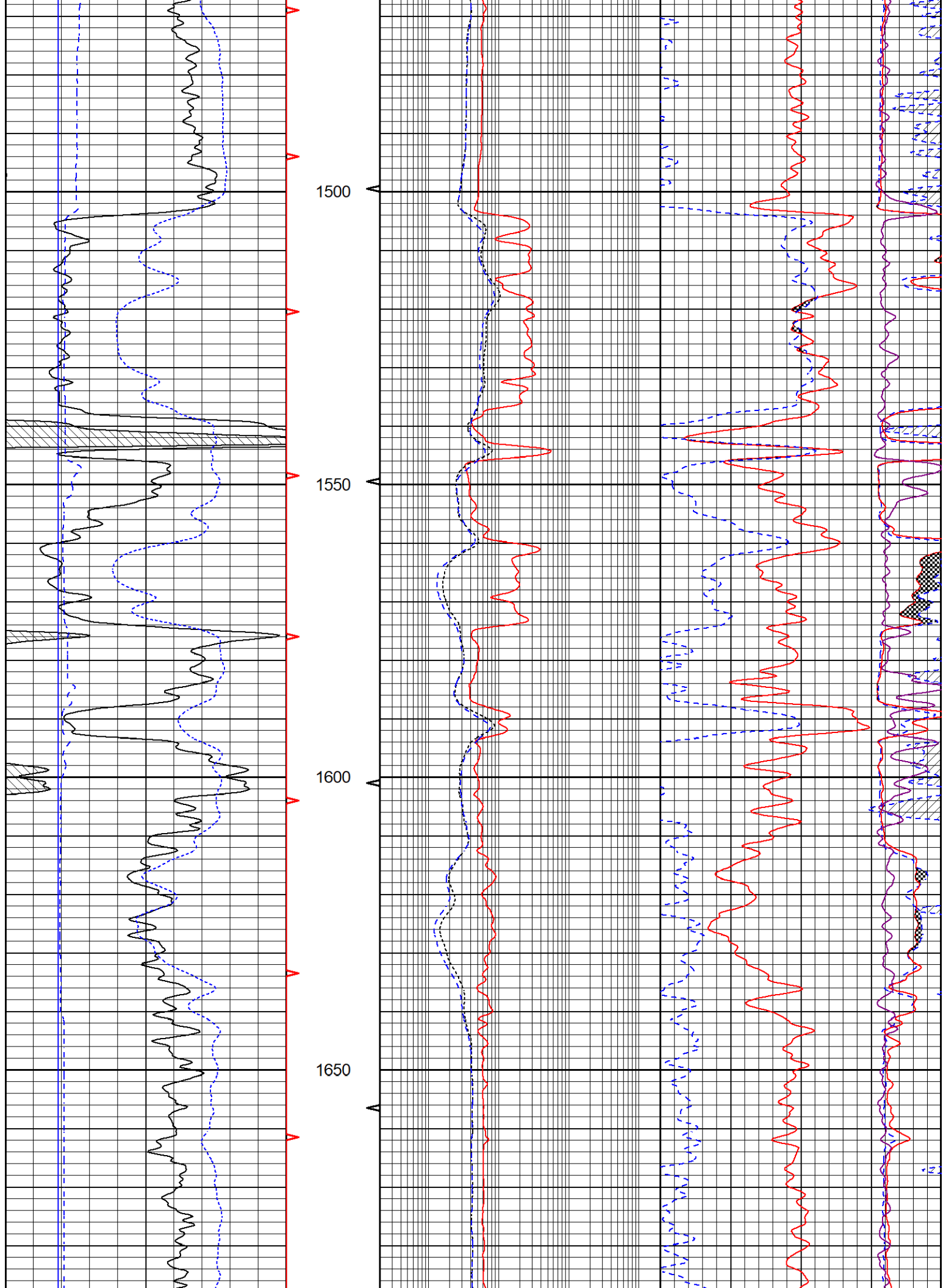
MAIN PASS

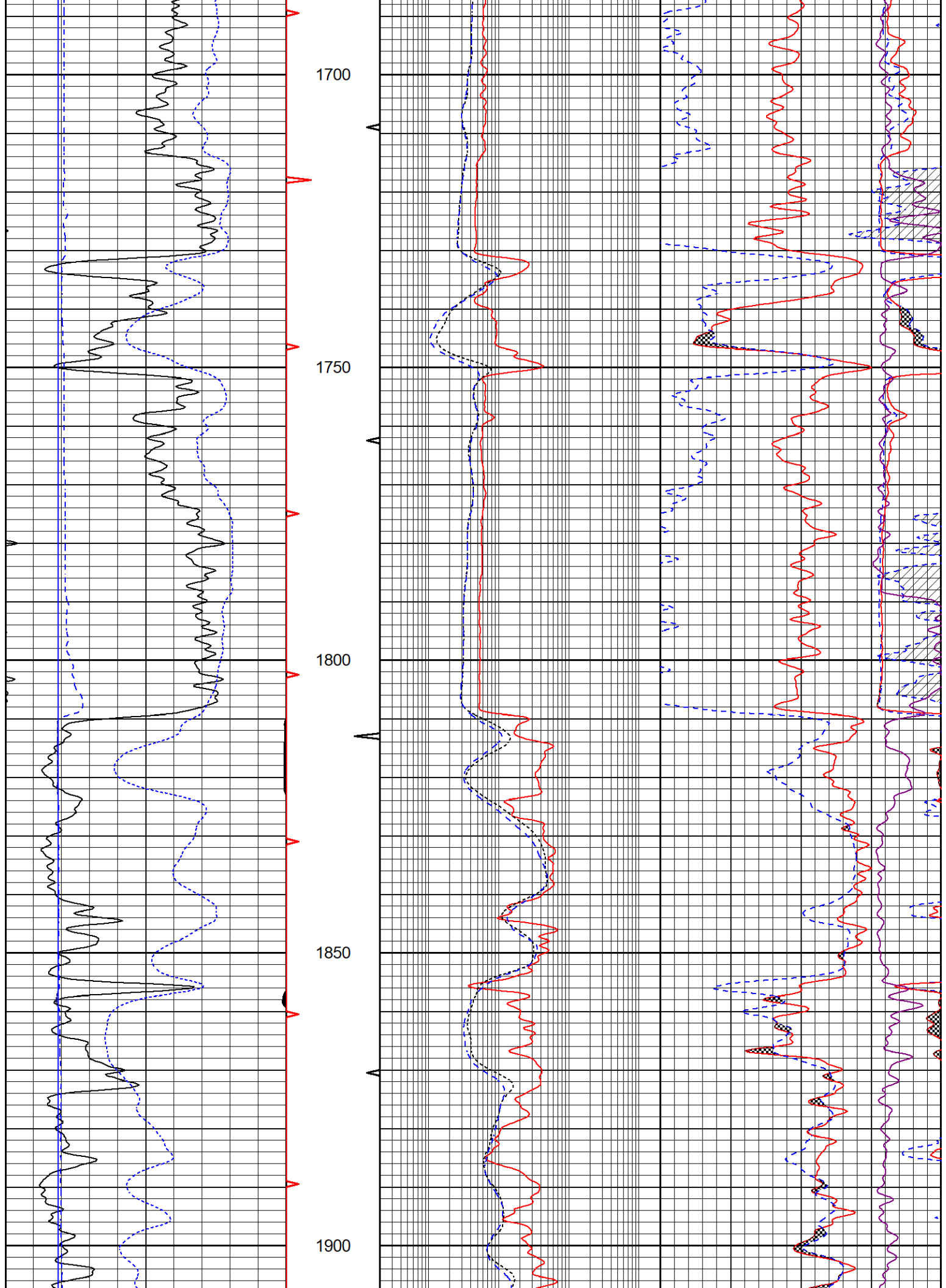
Database File epoc_t wiebe #31-6.db
 Dataset Pathname StkMI/pass3.1
 Presentation Format suemaur
 Dataset Creation Fri Nov 19 16:12:56 2021
 Charted by Depth in Feet scaled 1:240

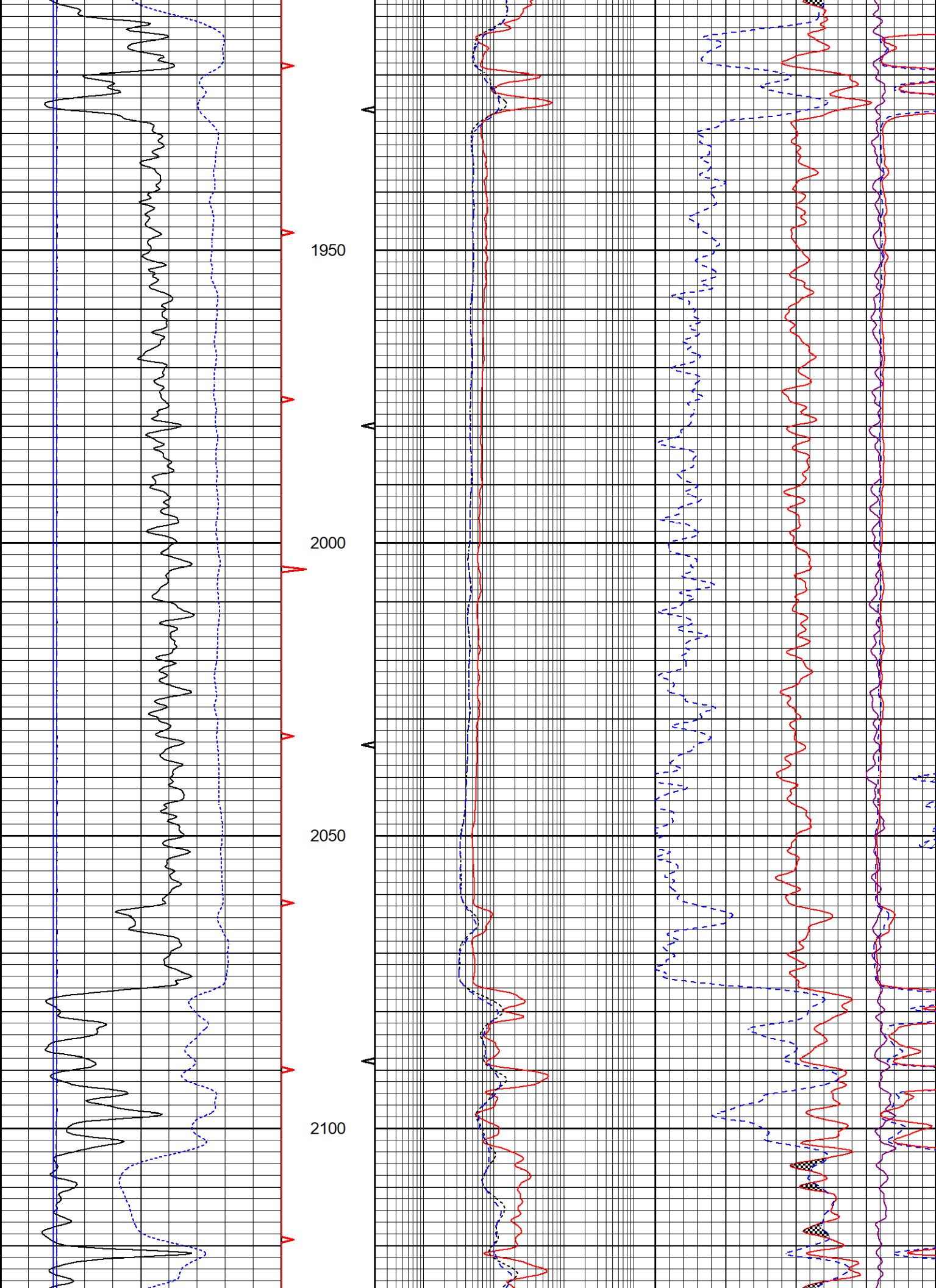
0	Gamma Ray (GAPI)	200	Shallow Resistivity	30	Compensated Density (pu)	-10
6	Caliper (in)	16	0.2 (Ohm-m)	2000	30	Compensated Neutron (pu) -10
-200	SP (mV)	0	Medium Resistivity			MN
			0.2 (Ohm-m)	2000		-20 (Ohm-m) 20
			0.2 Deep Resistivity (Ohm-m)	2000		MI
						-20 (Ohm-m) 20
						RHOC
						-0.25 (g/cc) 0.25

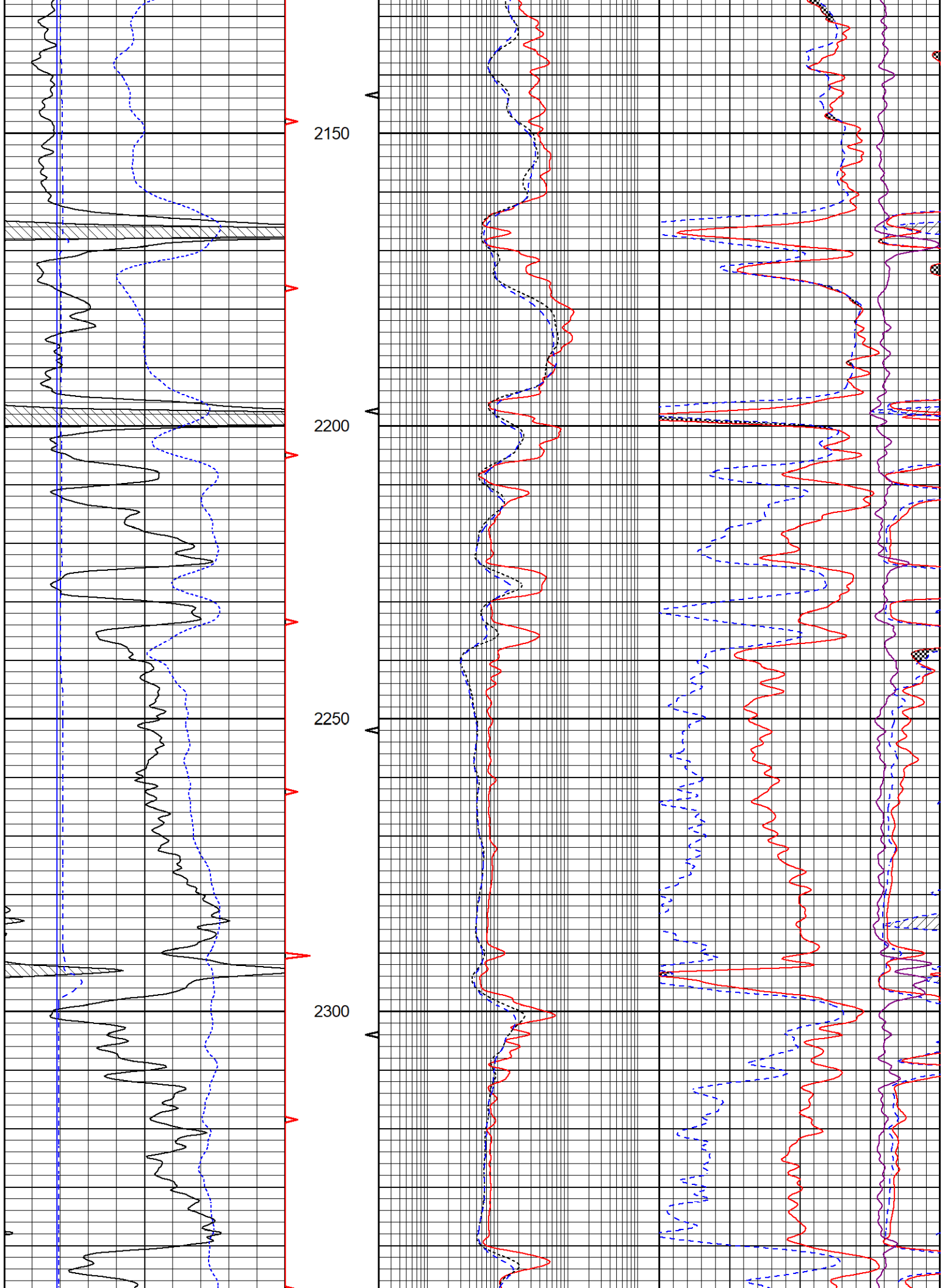


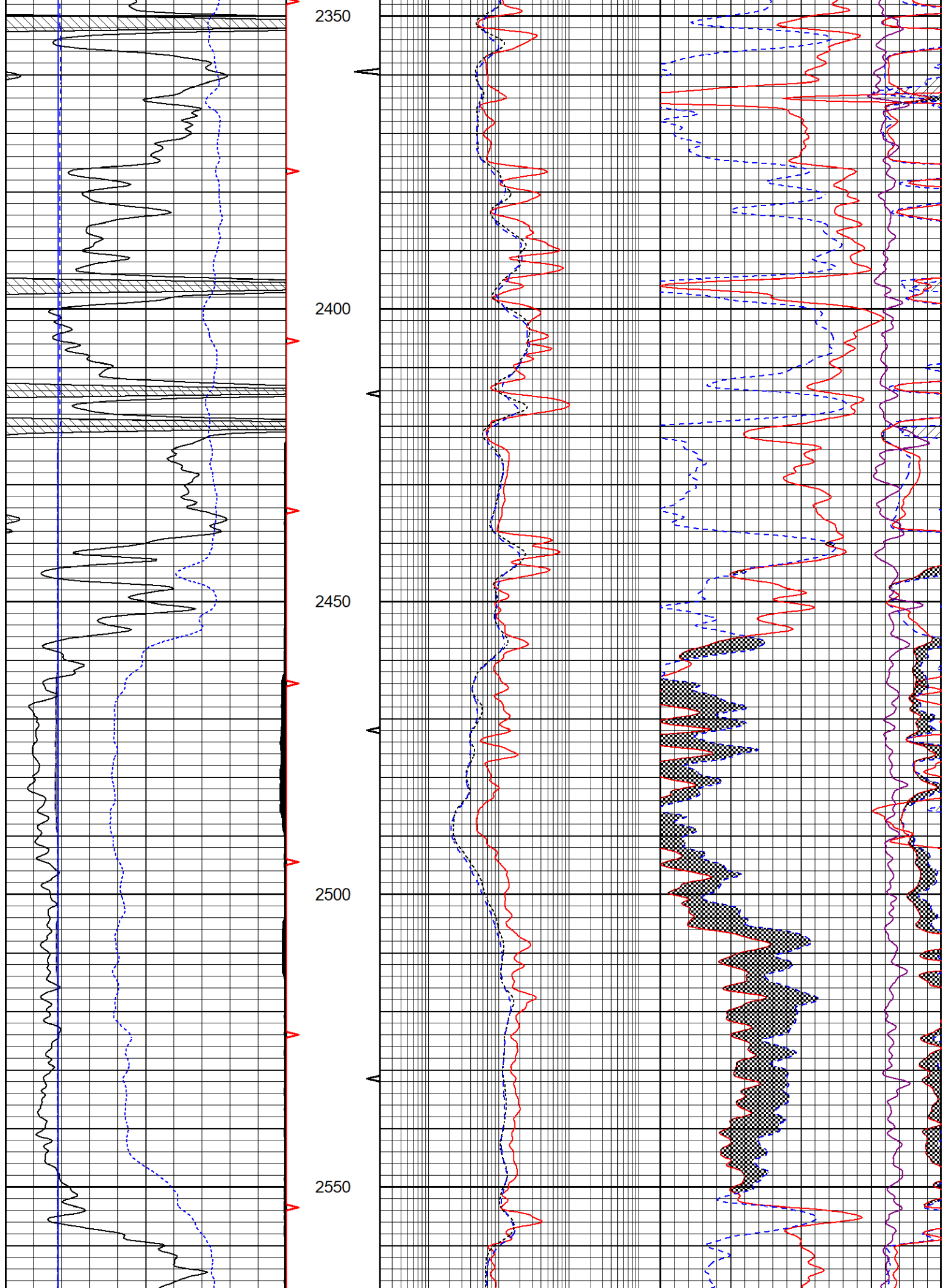


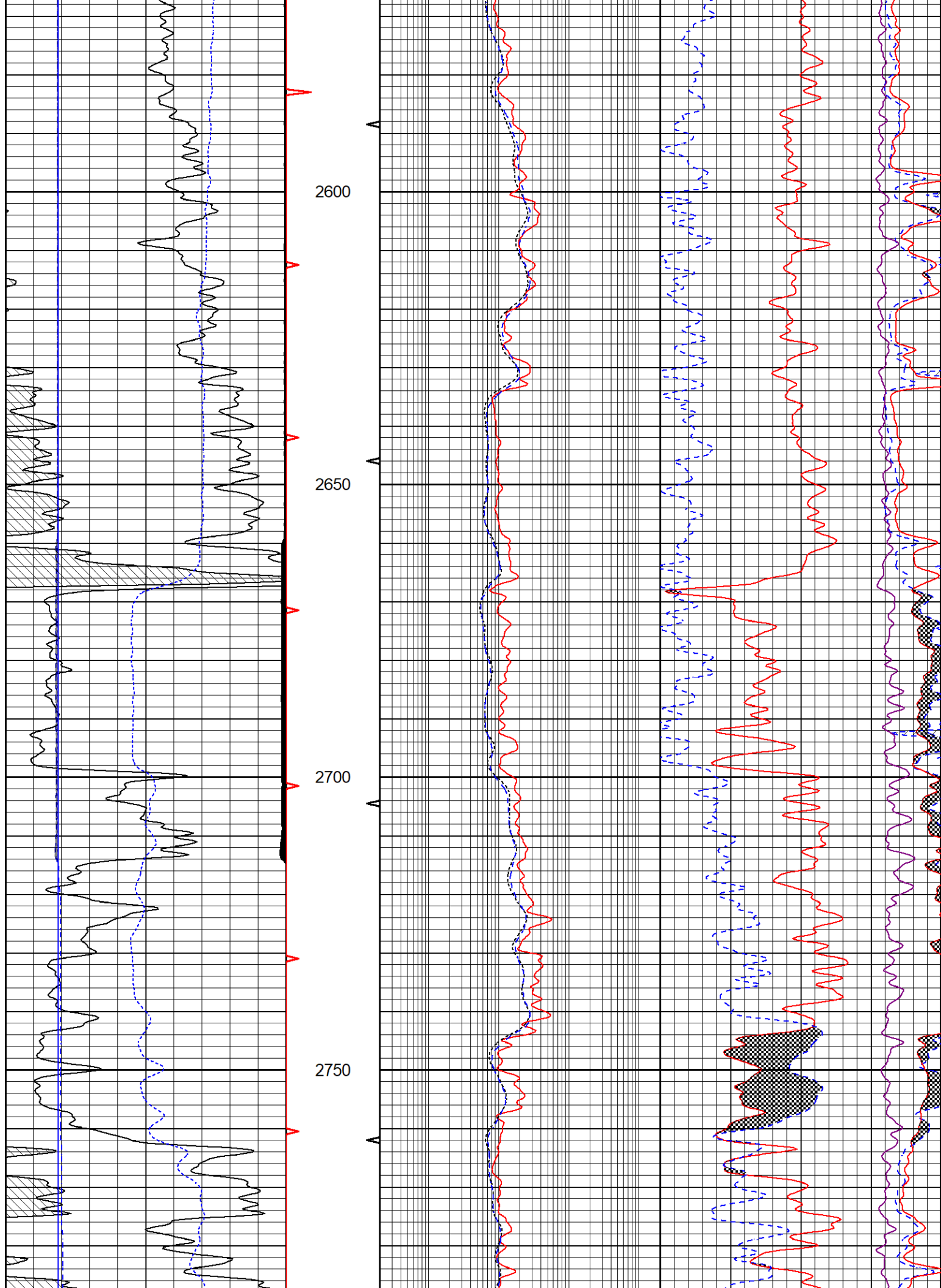


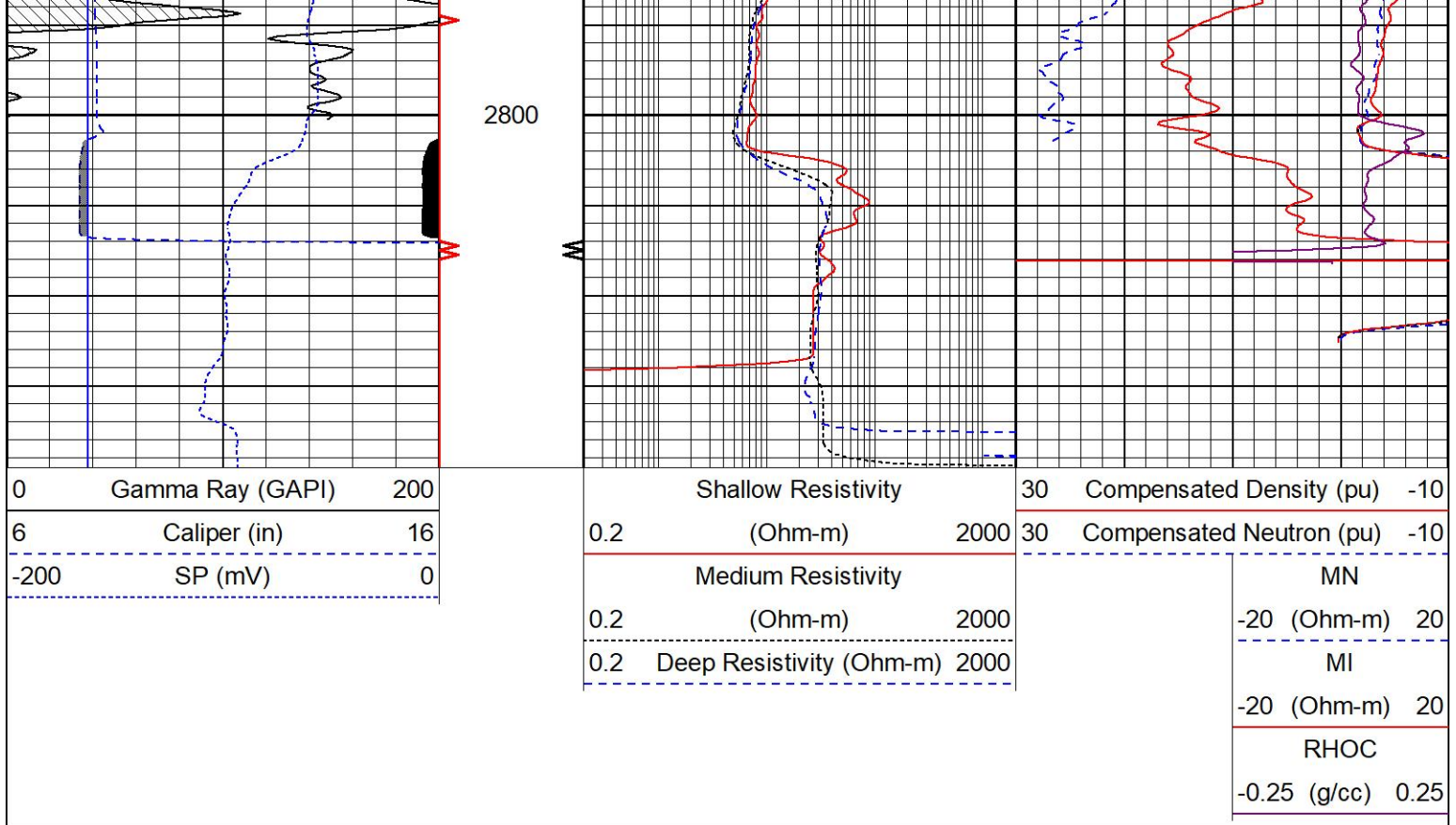








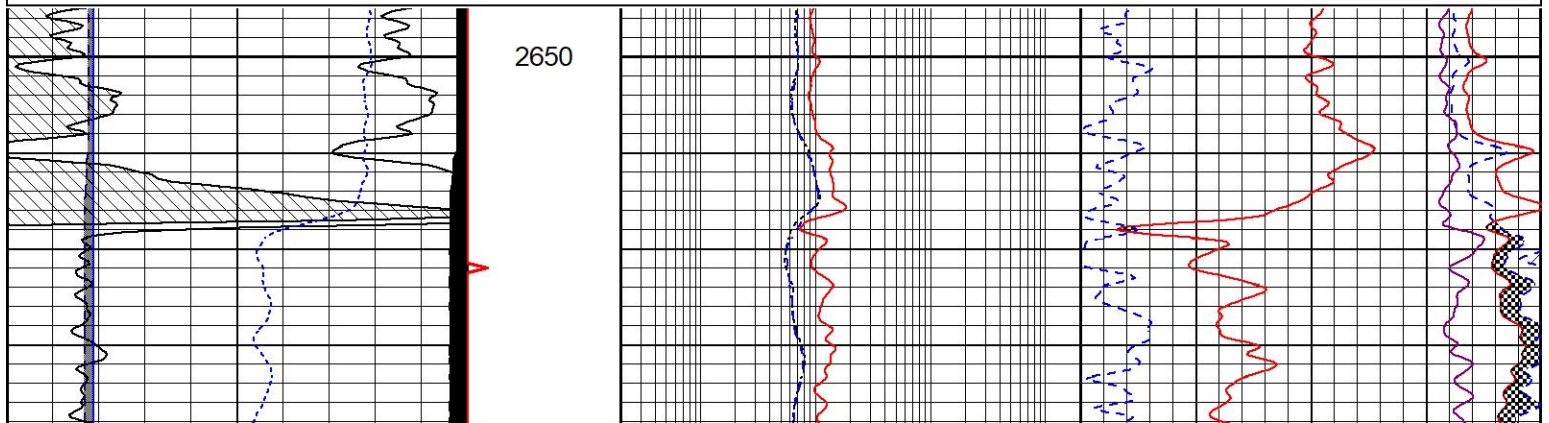
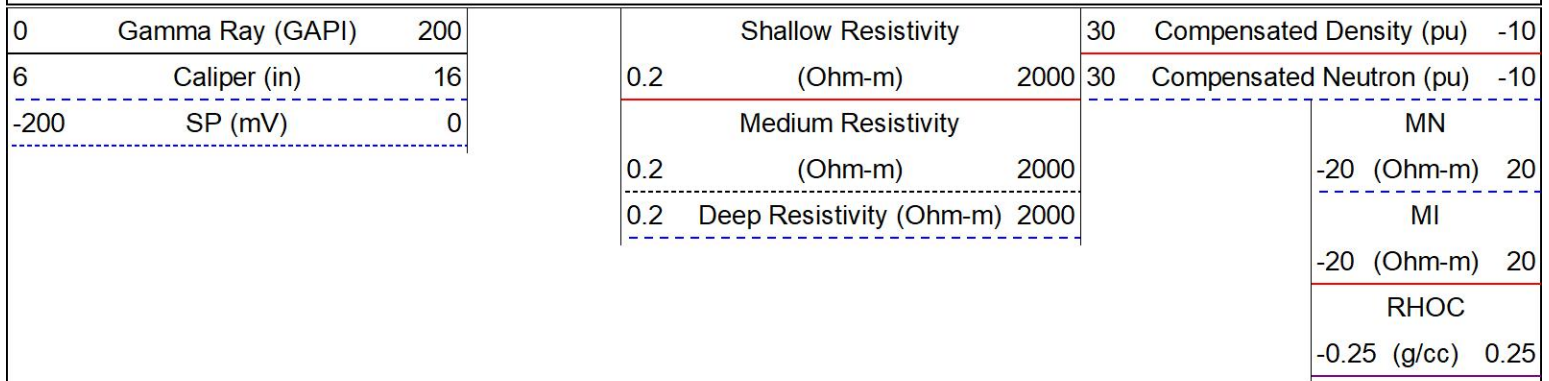


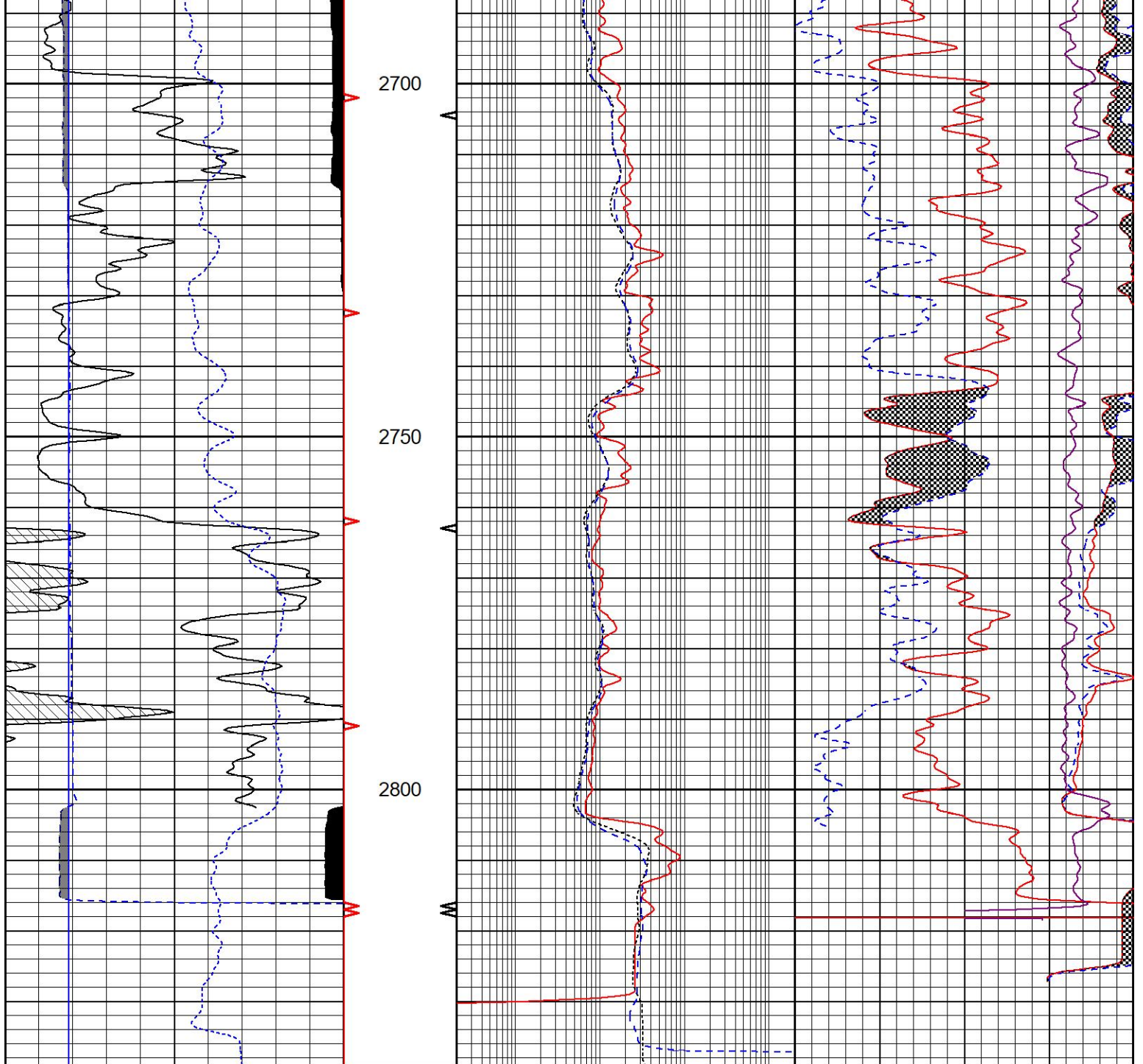


REPEAT SECTION

REPEAT PASS

Database File epoc_t wiebe #31-6.db
 Dataset Pathname StkMI/pass2.1
 Presentation Format suemaur
 Dataset Creation Fri Nov 19 15:48:37 2021
 Charted by Depth in Feet scaled 1:240





0	Gamma Ray (GAPI)	200
6	Caliper (in)	16
-200	SP (mV)	0

0.2	Shallow Resistivity (Ohm-m)	2000
0.2	Medium Resistivity (Ohm-m)	2000
0.2	Deep Resistivity (Ohm-m)	2000

30	Compensated Density (pu)	-10
30	Compensated Neutron (pu)	-10
MN		
-20	(Ohm-m)	20
MI		
-20	(Ohm-m)	20
RHOC		
-0.25	(g/cc)	0.25



Company EPOC LLC
 Well T. Wiebe #31-6
 Field Hazlett
 County Butler

