



MIDWEST WIRELINE

DUAL INDUCTION LOG

Company EPOC LLC
Well T. Wiebe #31-6
Field Hazlett
County Butler **State** Kansas

Company EPOC LLC
Well T. Wiebe #31-6
Field Hazlett
County Butler
State Kansas

Location: API #: 15-015-24154-00-00
 N/2 N/2 NE SE
 2540 FSL & 660 FEL
 SEC 31 TWP 23S RGE 5E
Permanent Datum Ground Level Elevation 1470
Log Measured From Kelly Bushing
Drilling Measured From Kelly Bushing

Other Services
 CNL/CDL
 MEL
 Elevation
 K.B. 1479
 D.F.
 G.L. 1470

Date	11/19/2021
Run Number	One
Depth Driller	2842
Depth Logger	2834
Bottom Logged Interval	2833
Top Log Interval	200
Casing Driller	8.625 @ 237
Casing Logger	
Bit Size	7.875
Type Fluid in Hole	Chemical
Salinity, ppm CL	1000
Density / Viscosity	9.3 48
pH / Fluid Loss	9.5 8.4
Source of Sample	FLOWLINE
Rm @ Meas. Temp	0.85 @ 62
Rmt @ Meas. Temp	0.64 @ 62
Rmc @ Meas. Temp	1.15 @ 62
Source of Rmf / Rmc	CHARTS
Rm @ BHT	0.50 @ 104
Operating Rig Time	3 Hours
Max Rec. Temp. F	104
Equipment Number	P-24
Location	Hays
Recorded By	T. Martin
Witnessed By	Bill Stout
	Ray Gilbert

<<< Fold Here >>>

All interpretations are opinions based on inferences from electrical or other measurements and Midwest Wireline LLC cannot and does not guarantee the accuracy or correctness of any interpretation, and Midwest Wireline LLC will not be liable or responsible for any loss, costs, damages, or expenses incurred or sustained by anyone resulting from any interpretation made by any of our officers, agents or employees.

Comments

N/A DENOTES NOT AVAILABLE OR NON-APPLICABLE.

Newton, KS, E on 150th to Purity Springs Rd,
2.5 S, W into

Log Measured From: Kelly Bushing 9 Ft. Above Permanent Datum

THANK YOU FOR USING MIDWEST WIRELINE LLC
785-625-3858

Your Midwest Wireline Crew		This Log Record Was Witnessed By	
Engineer:	T. Martin	Primary Witness:	Bill Stout
Operator:		Secondary Witness:	Ray Gilbert
Operator:		Secondary Witness:	
Operator:		Secondary Witness:	

Core	Offset (ft)	Depth	Description	Length (ft)	O.D. (in)	Weight (lb)
------	-------------	-------	-------------	-------------	-----------	-------------

Sensor	Offset (ft)	Schematic	Description	Length (ft)	O.D. (in)	Weight (lb)
GR	40.08		GR-M&W (233-M&W)	3.00	3.50	50.00
CNLSC CNSSC	37.48 36.73		CNT-M&W (207-MW)	5.50	3.50	100.00
LSD DCAL SSD	28.43 28.42 27.93		CDL-M&W (934-226)	8.50	4.00	250.00
MCAL MI MN	19.83 19.83 19.83		ML-PSIML (PSI-01) GO Micro log tools converted to Simplec electronics	7.58	4.00	65.00
RLL3F RLL3	15.80 15.80					
CILD	8.00		DIL-M&W (1987)	18.50	3.50	220.00
CILM	4.70					
SP	0.20					

Dataset: epoc_t wiebe #31-6.db: field/well/StkMI/pass3.1
 Total length: 43.08 ft
 Total weight: 685.00 lb
 O.D.: 4.00 in

Log Variables

DatabaseC:\ProgramData\Warrior\Data\epoc_t wiebe #31-6.db
 Dataset field/well/StkMI/pass3.1/_vars_

Top - Bottom

A	BOREID in	BOTTEMP degF	CASEOD in	CASETHCK in	FLUIDDEN g/cc	M	MATRXDEN g/cc
1	7.875	104	5.5	0	1	2	2.71
NPORSEL	PERFS	SNDERR mmho/m	SNDERRM mmho/m	SPSHIFT mV	SRFTEMP degF	SZCOR	TDEPTH ft
Limestone	0	0	0	100	50	Off	2834

Variable Description

A : Cement Factor (a)
 BOREID : Borehole I.D.
 BOTTEMP : Bottom Hole Temperature
 CASEOD : Casing O.D.
 CASETHCK : Casing Thickness
 FLUIDDEN : Fluid Density
 M : Cement Exp (m)
 MATRXDEN : Matrix Density

NPORSEL : Neutron Porosity Curve Select
 PERFS : Perforation Flag
 SNDERR : Deep Sonde Error Correction
 SNDERRM : Medium Sonde Error Correction
 SPSHIFT : S.P. Baseline Offset
 SRFTEMP : Surface Temperature
 SZCOR : CN Size Cor. ?
 TDEPTH : Total Depth

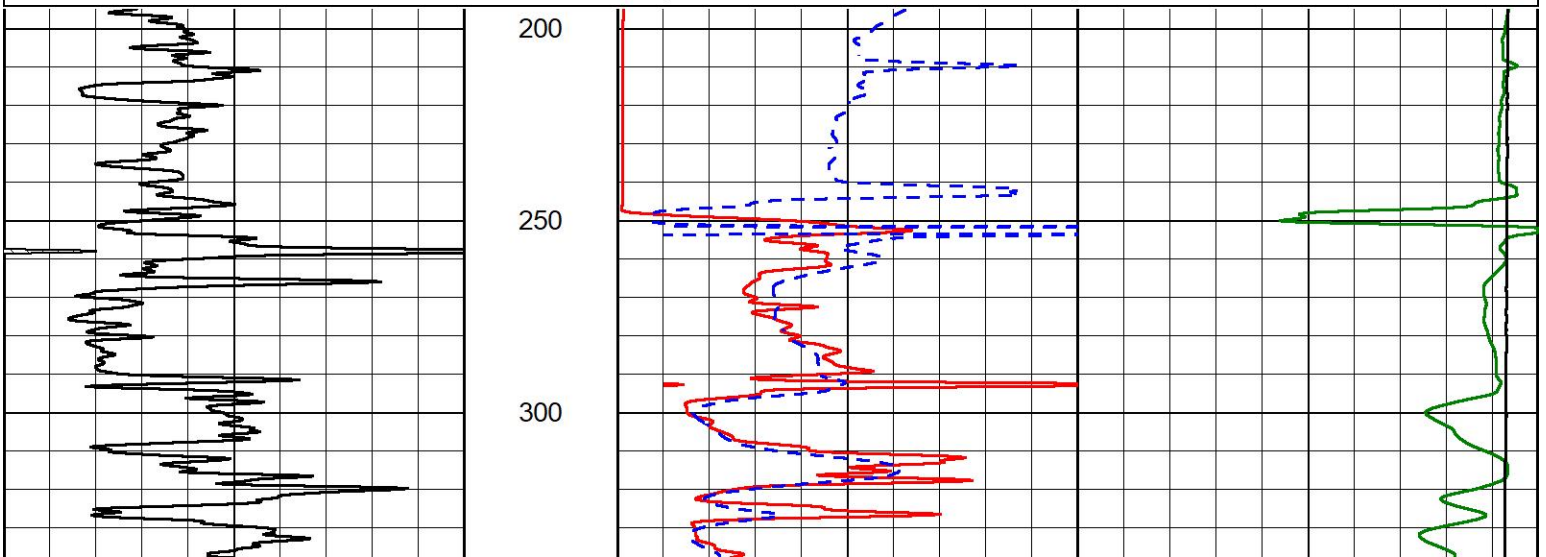


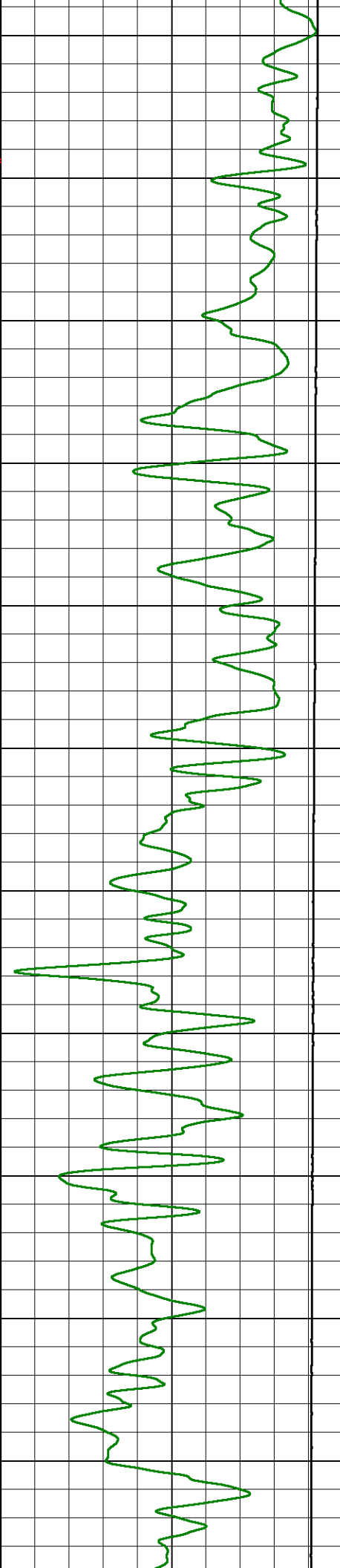
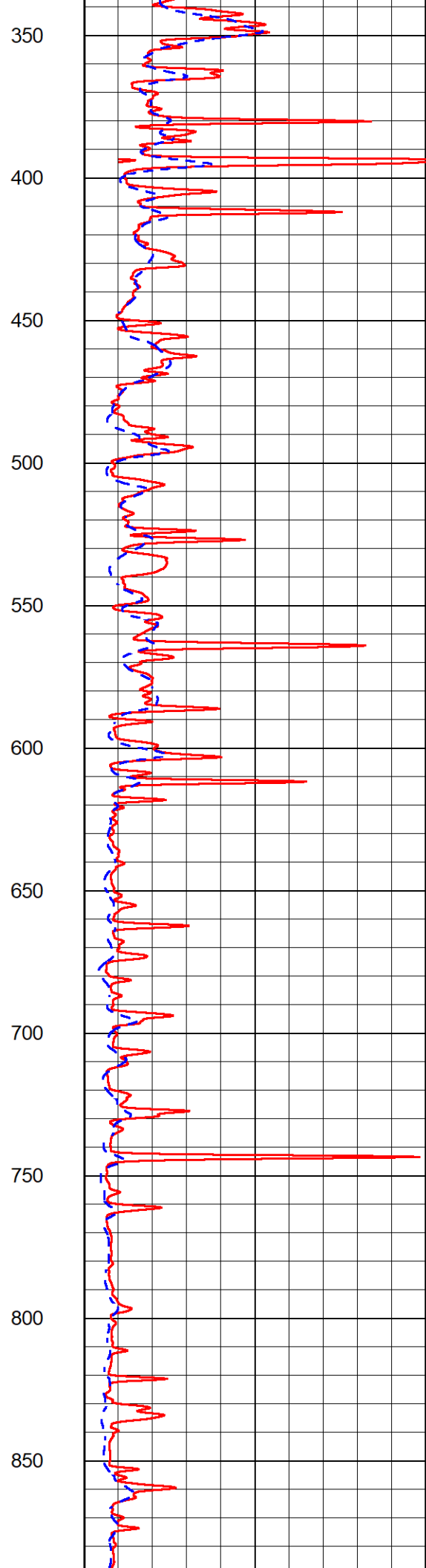
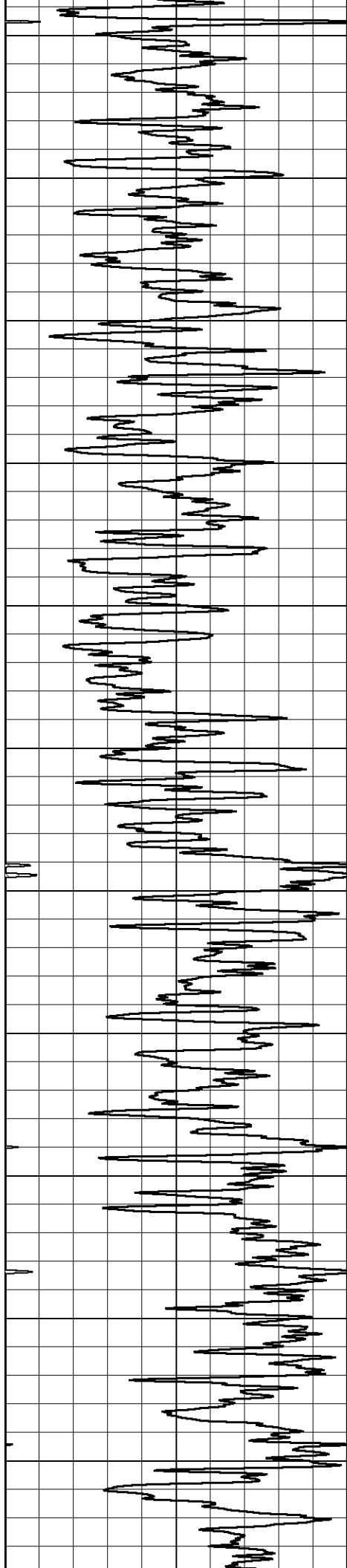
2" SCALE RESISTIVITY

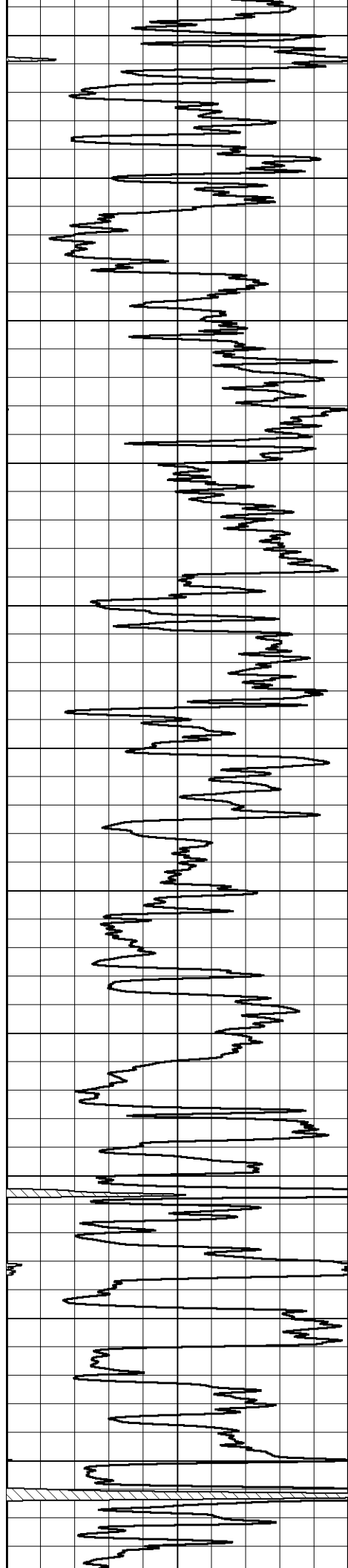
MAIN PASS

Database File epoc_t wiebe #31-6.db
 Dataset Pathname StkMI/pass3.2
 Presentation Format _dil2in
 Dataset Creation Fri Nov 19 16:12:45 2021
 Charted by Depth in Feet scaled 1:600

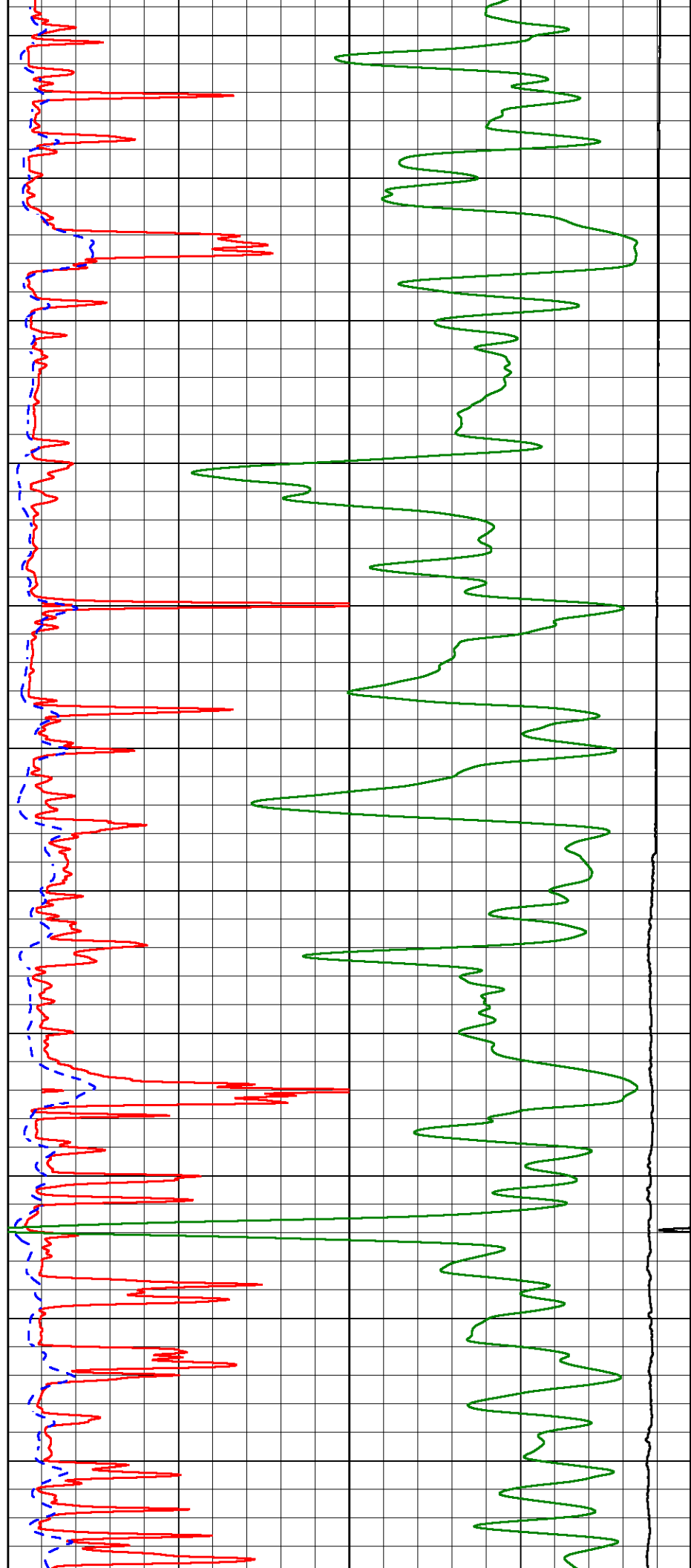
0	Gamma Ray (GAPI)	150	1000	Conductivity (mmho/m)	0
			15000	Line Tension (lb)	0
0	Shallow Resistivity (Ohm-m)	50			
0	Deep Resistivity (Ohm-m)	50			
	Shallow Resistivity				
50	(Ohm-m)	200			
50	Deep Resistivity (Ohm-m)	200			

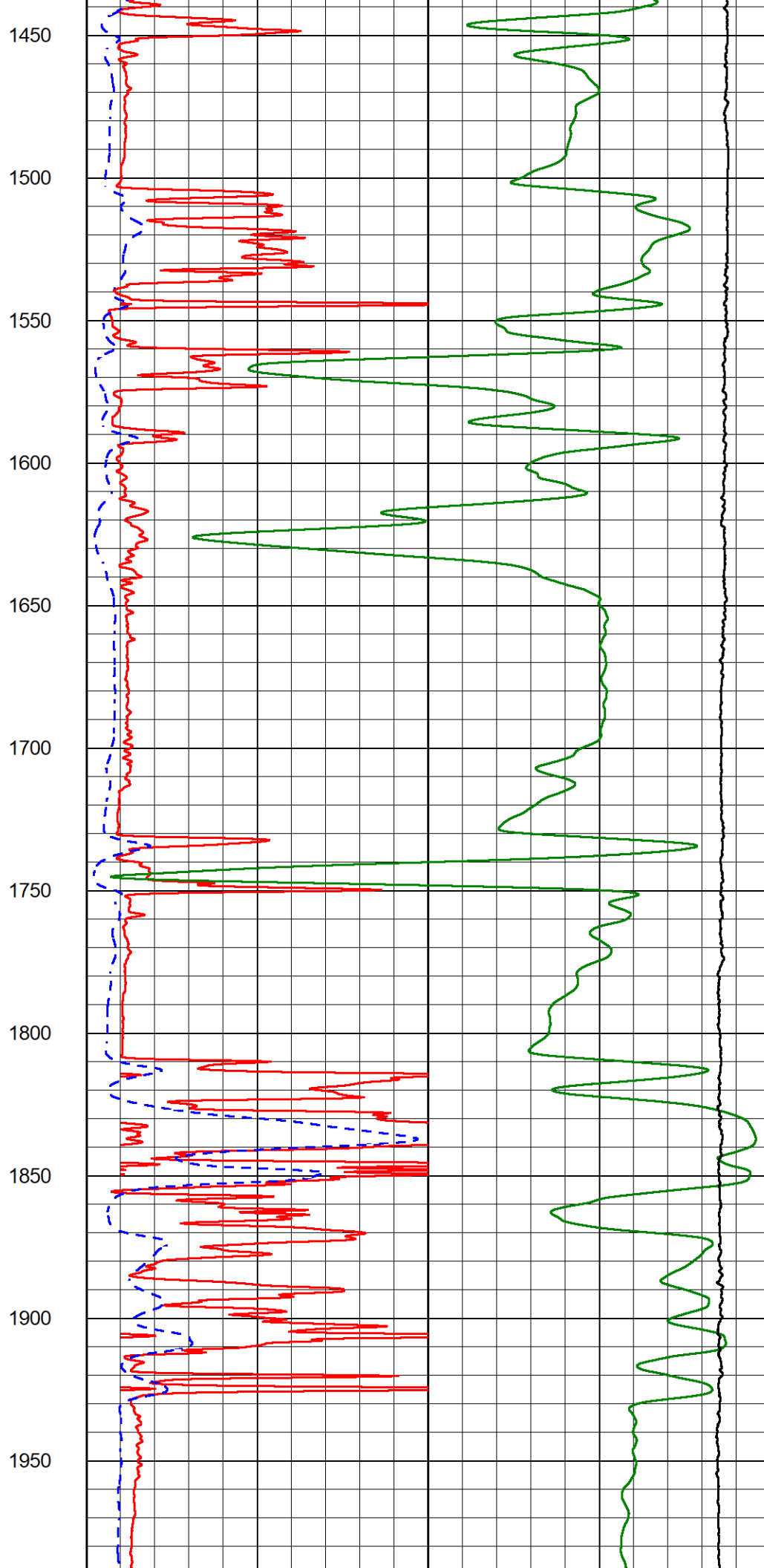
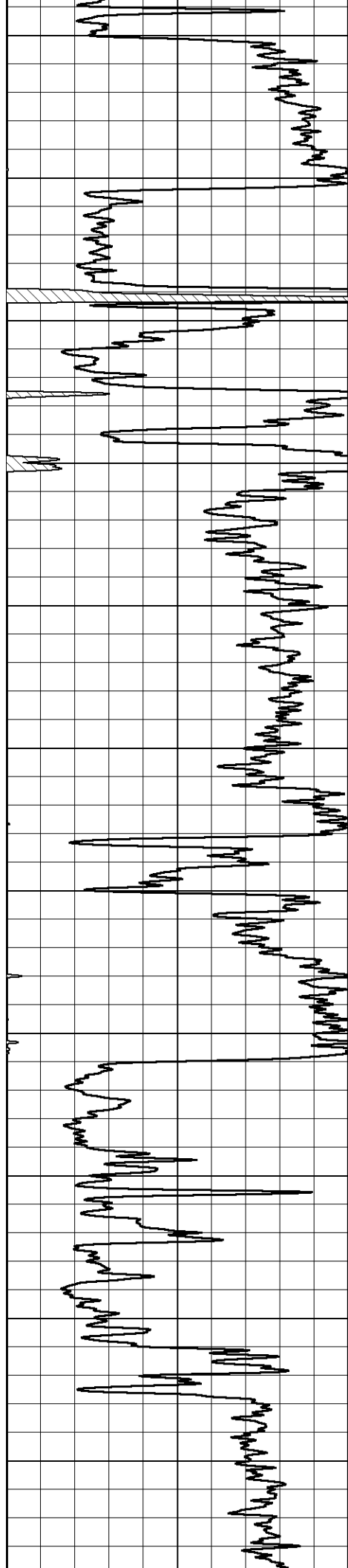


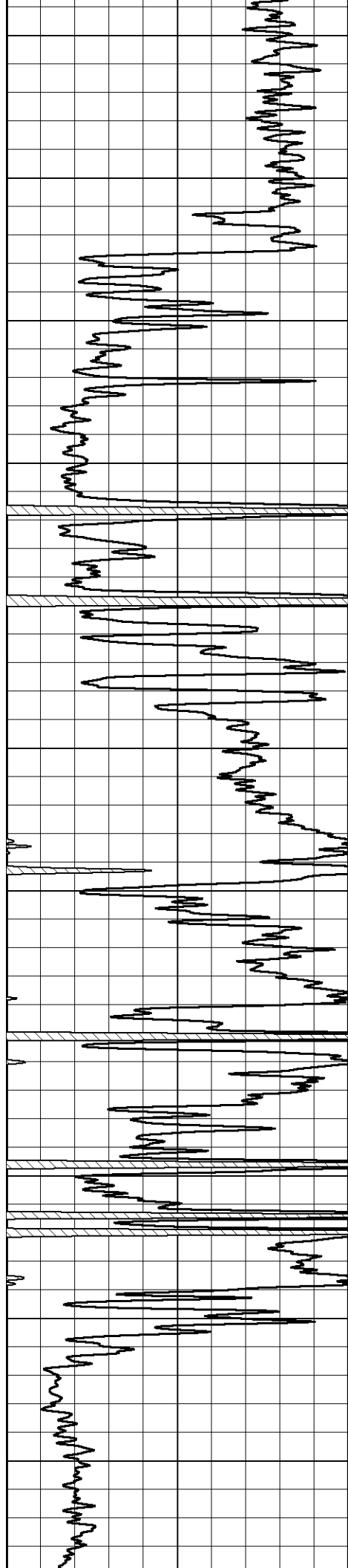




900
950
1000
1050
1100
1150
1200
1250
1300
1350
1400







2000

2050

2100

2150

2200

2250

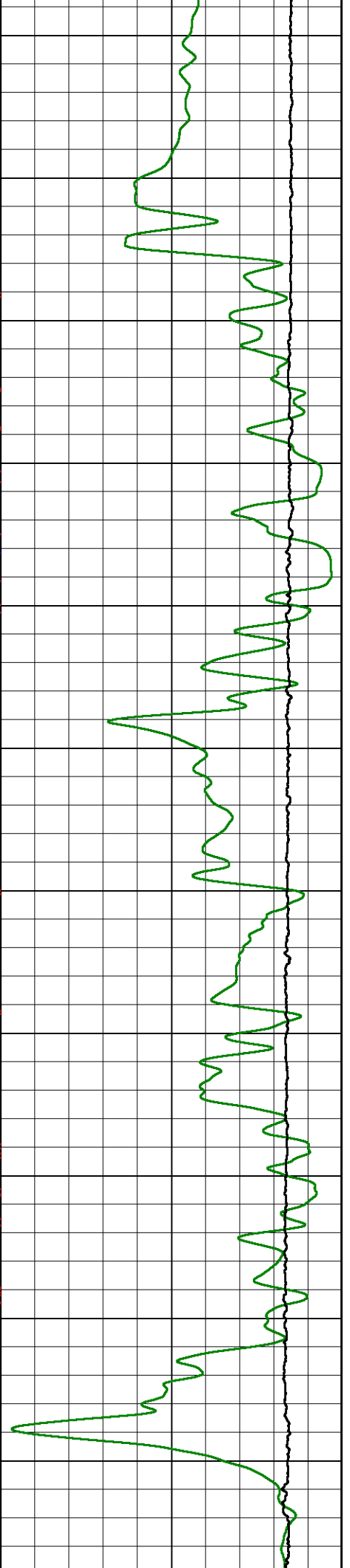
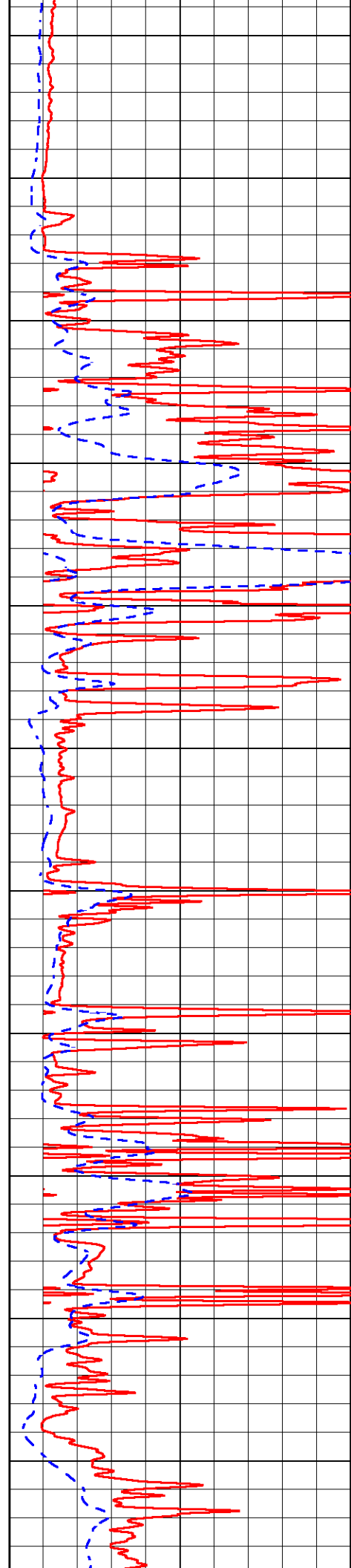
2300

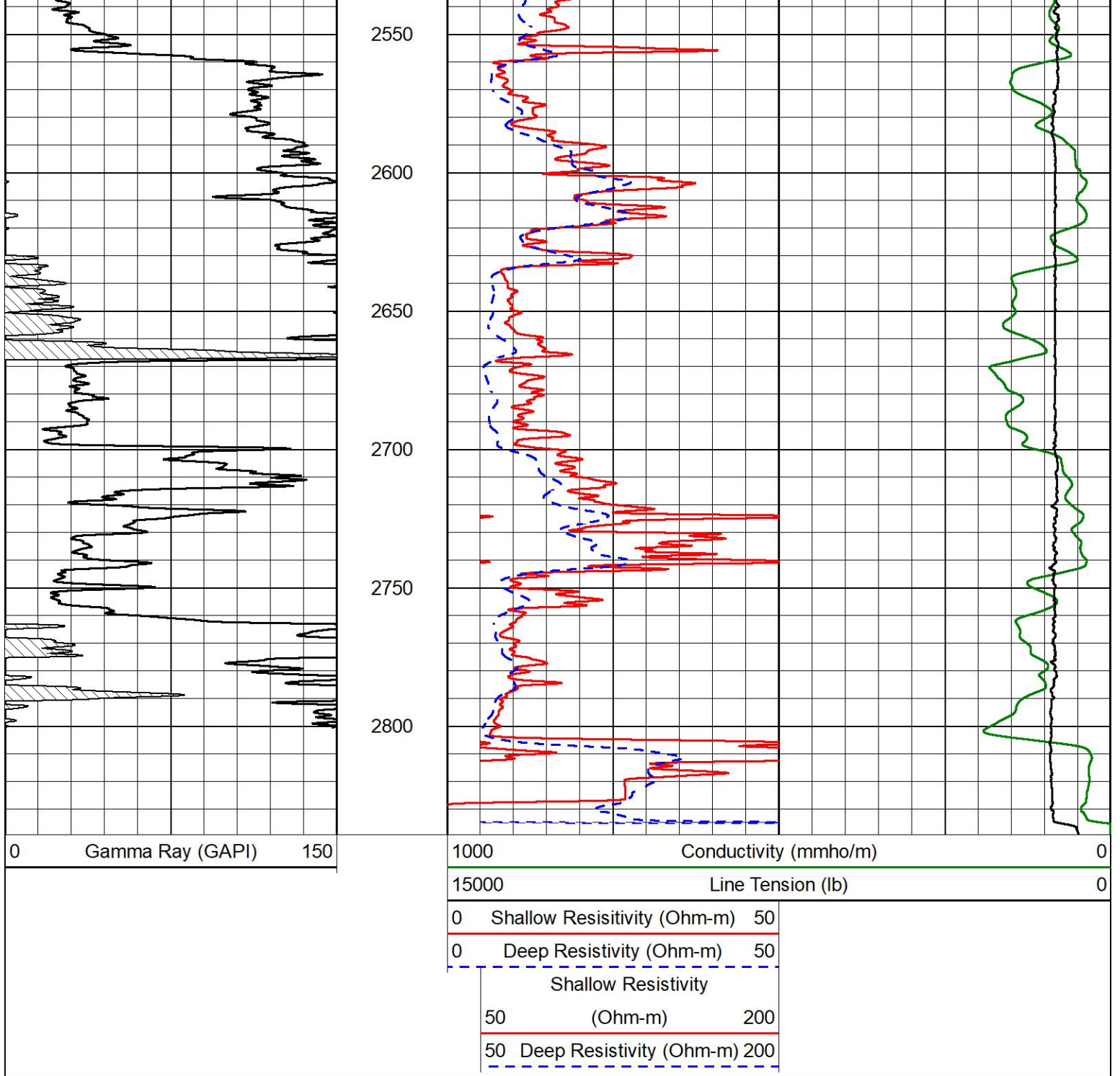
2350

2400

2450

2500

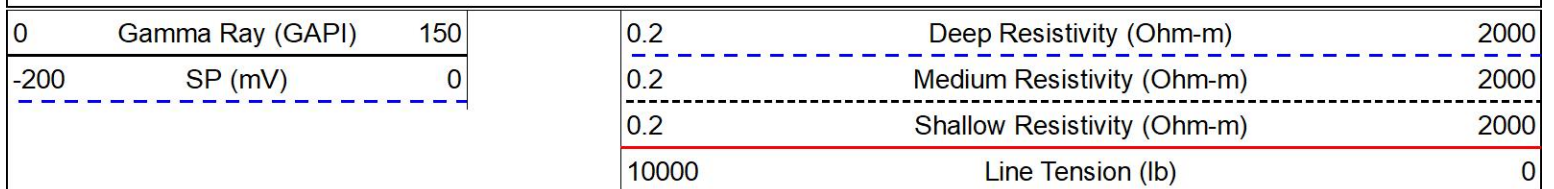


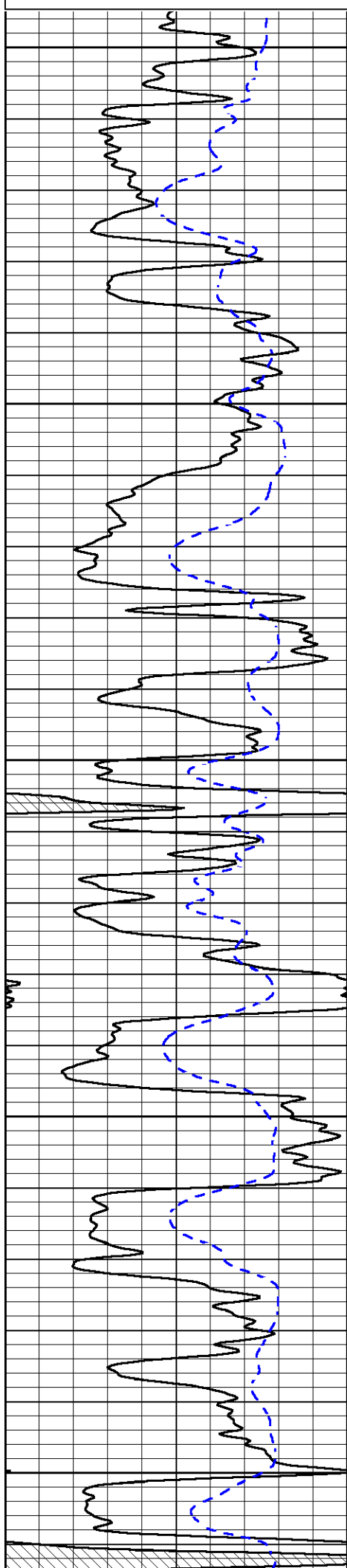


DETAIL SECTION

MAIN PASS

Database File epoc_t wiebe #31-6.db
 Dataset Pathname StkMI/pass3.1
 Presentation Format _dil
 Dataset Creation Fri Nov 19 16:12:56 2021
 Charted by Depth in Feet scaled 1:240





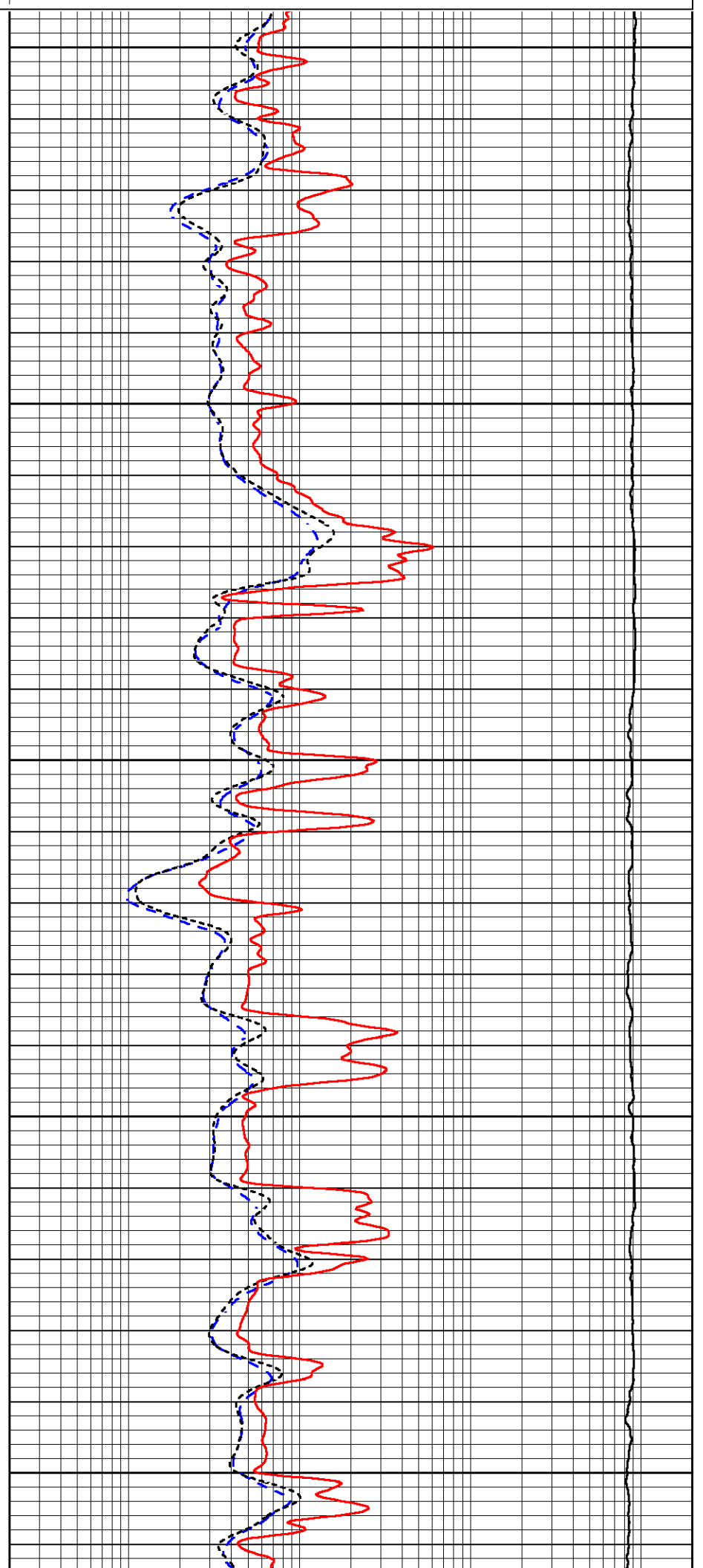
1200

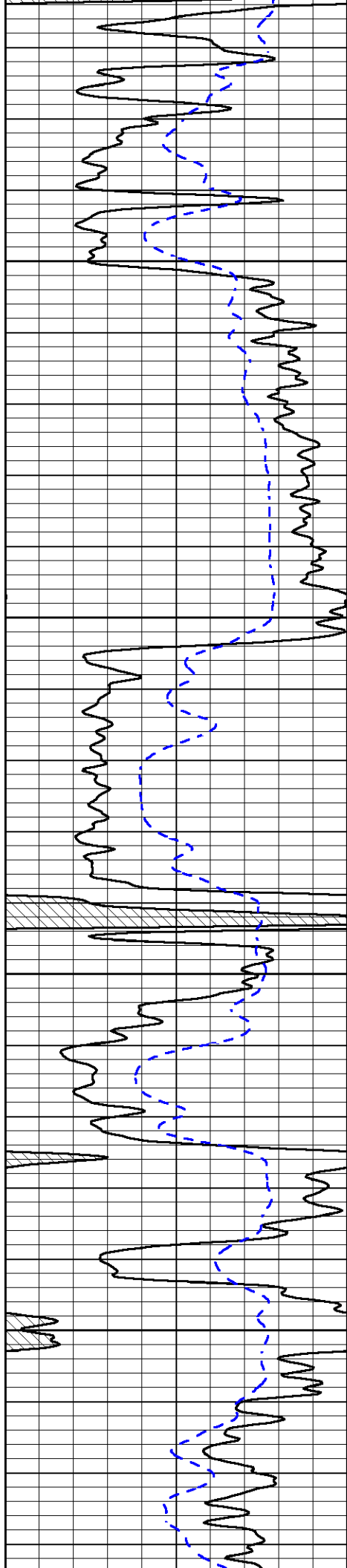
1250

1300

1350

1400



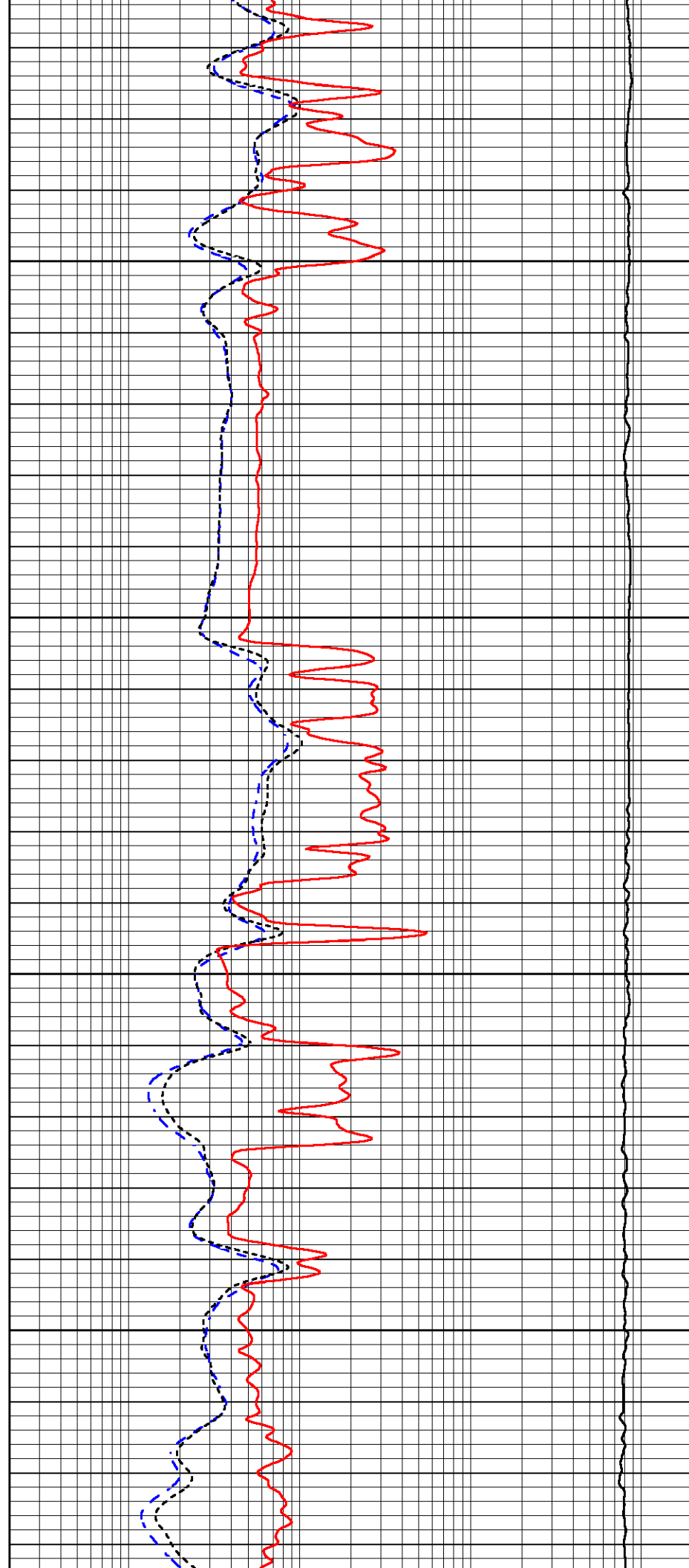


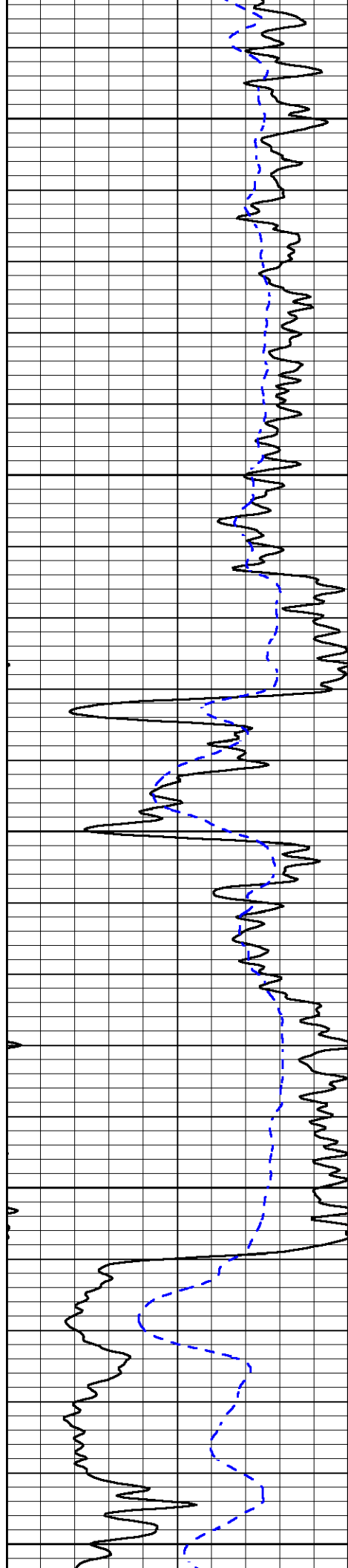
1450

1500

1550

1600





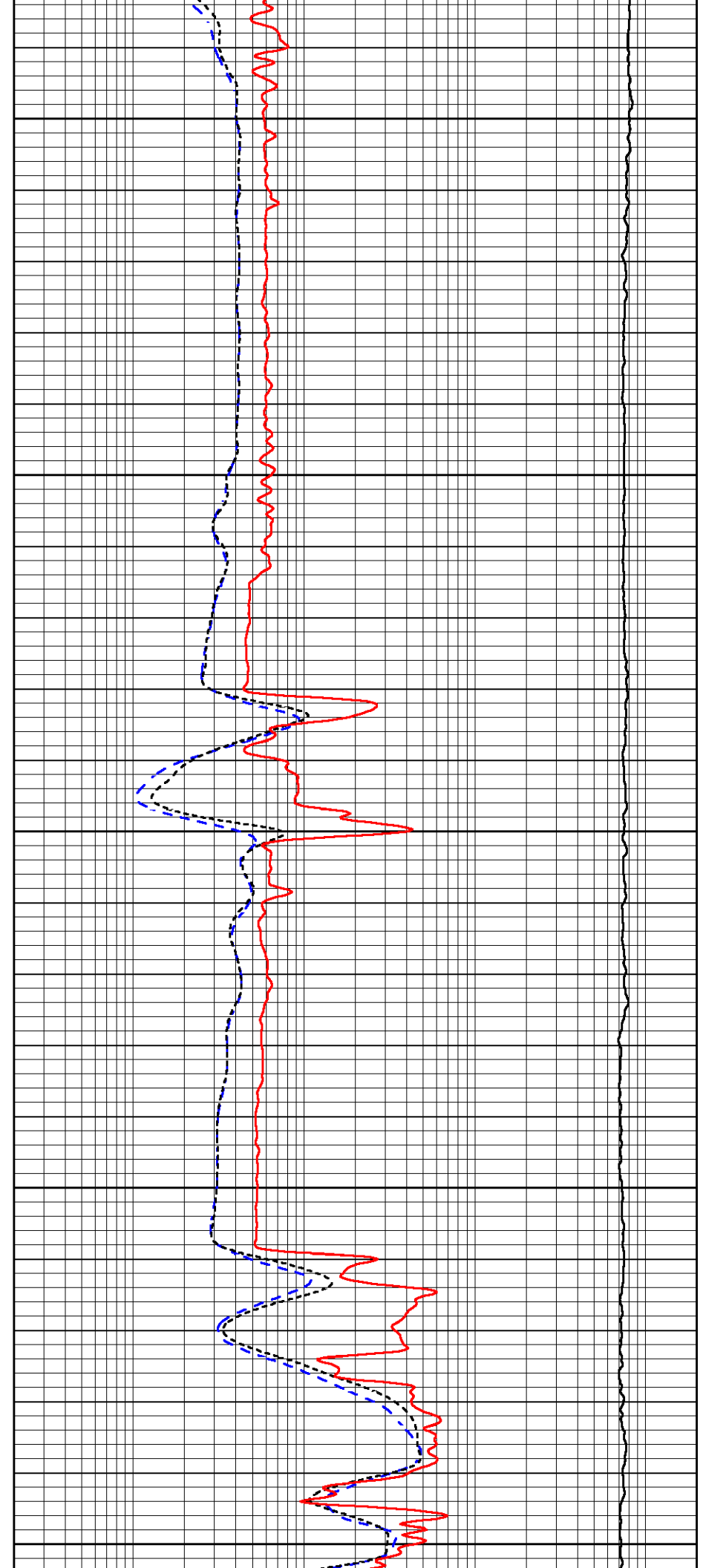
1650

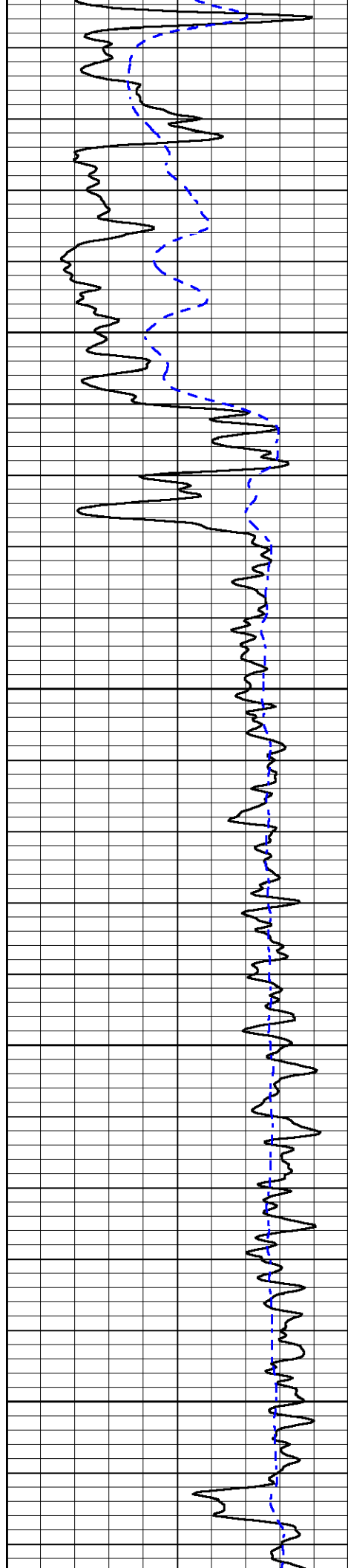
1700

1750

1800

1850



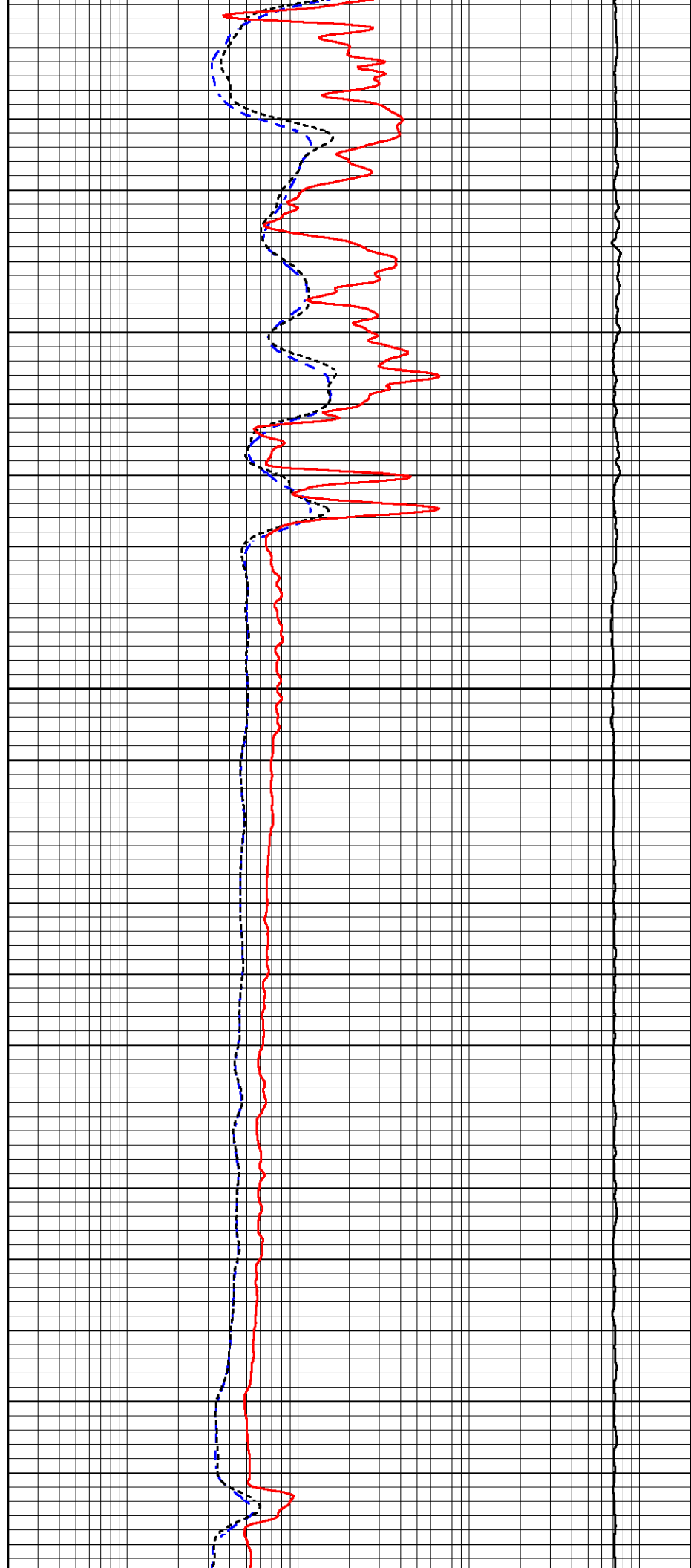


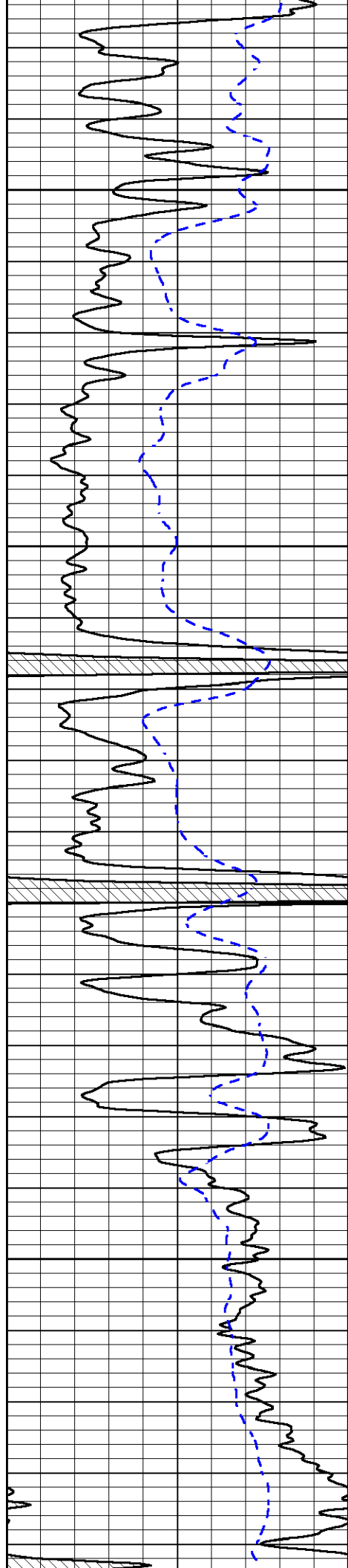
1900

1950

2000

2050



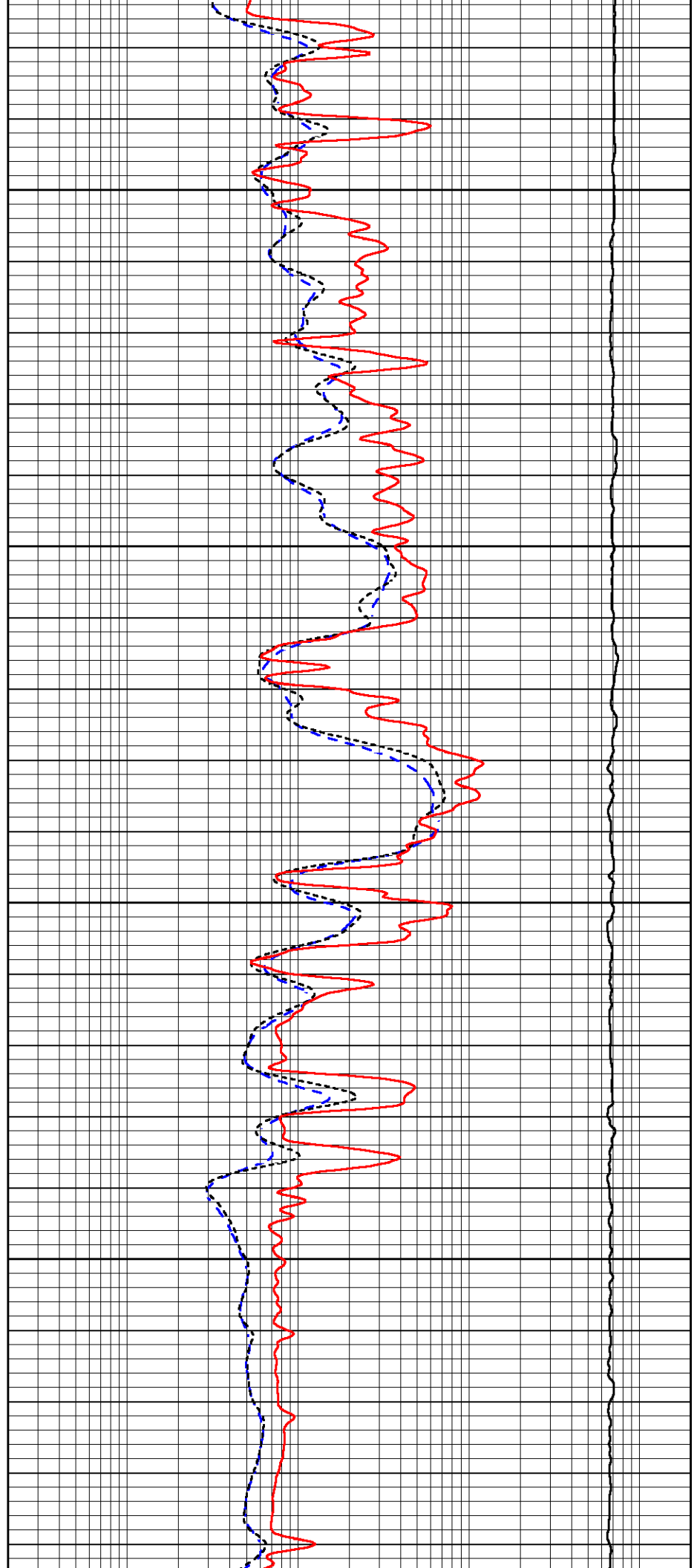


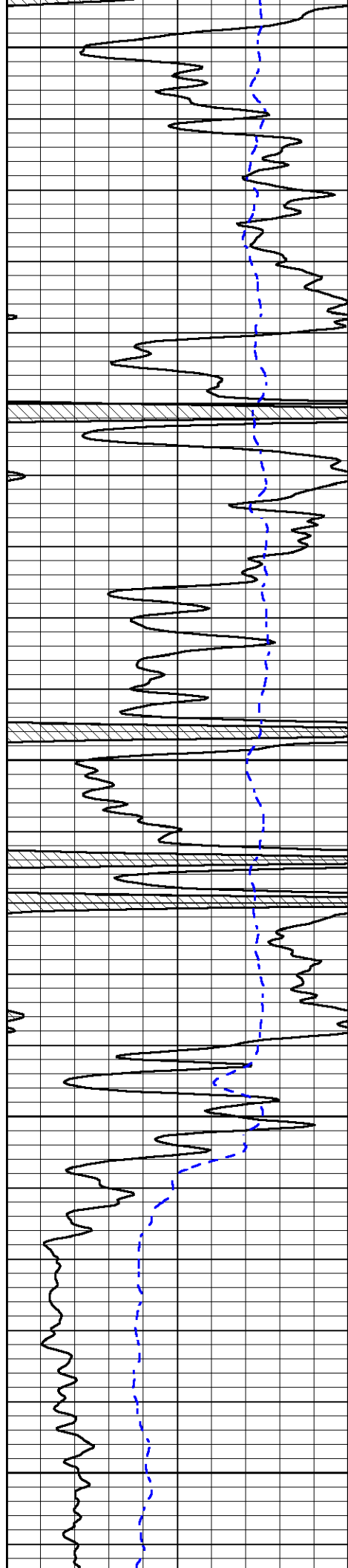
2100

2150

2200

2250





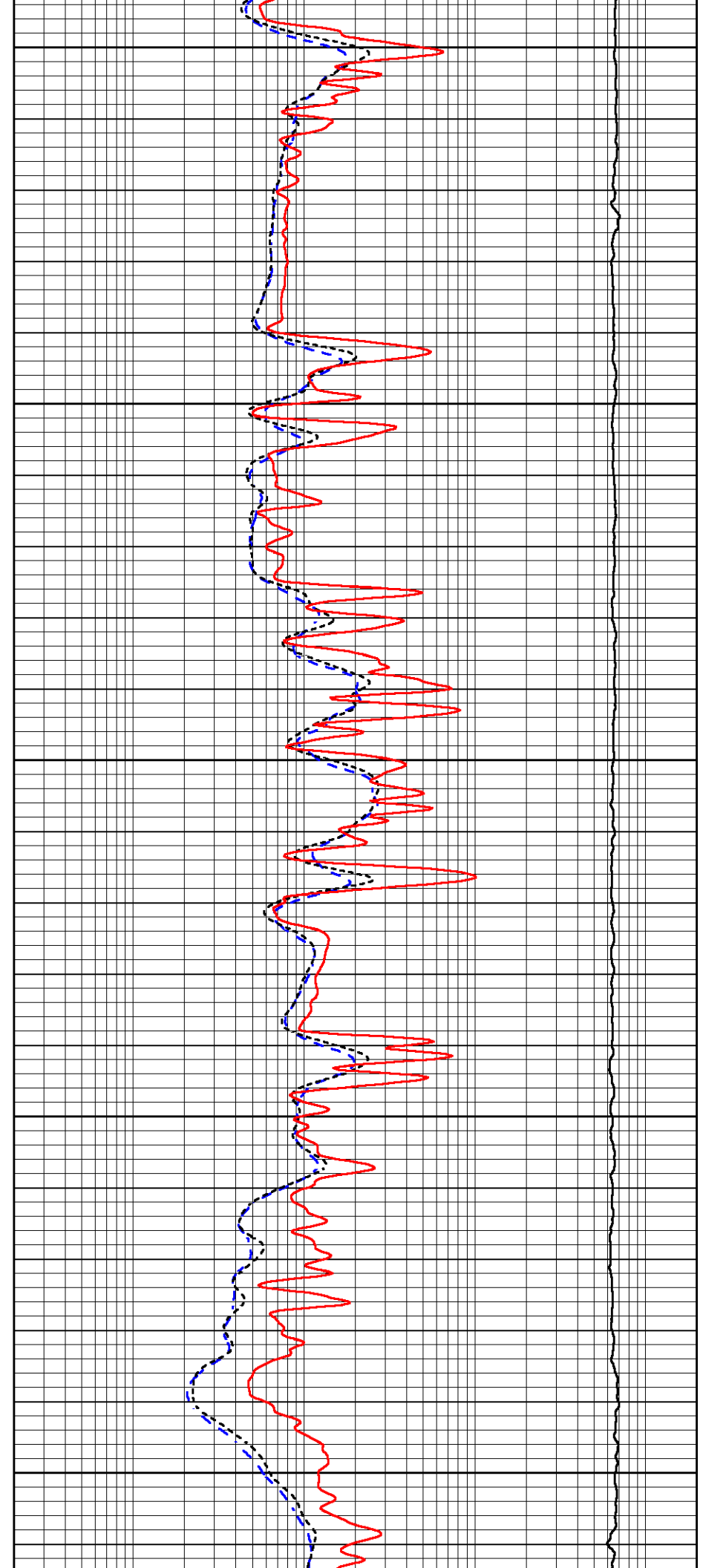
2300

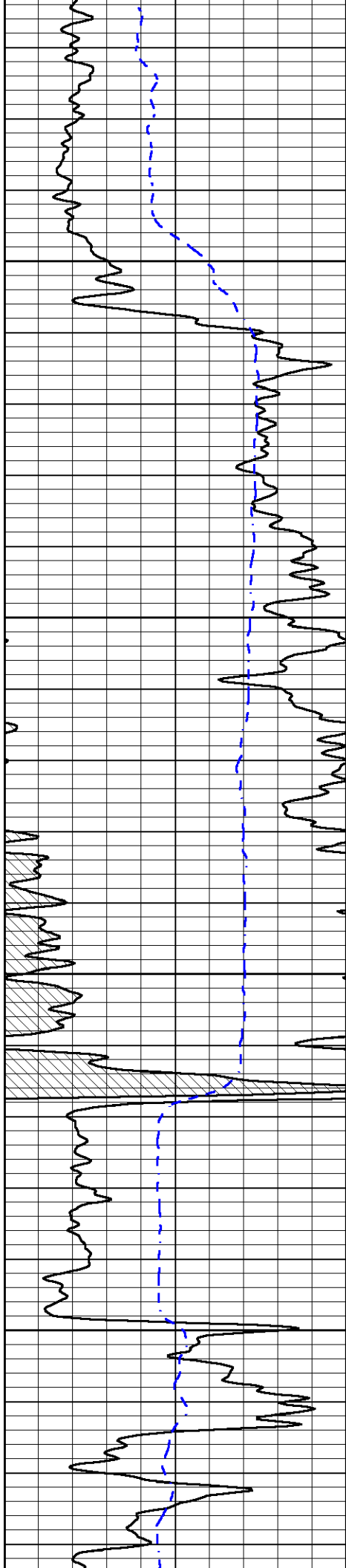
2350

2400

2450

2500



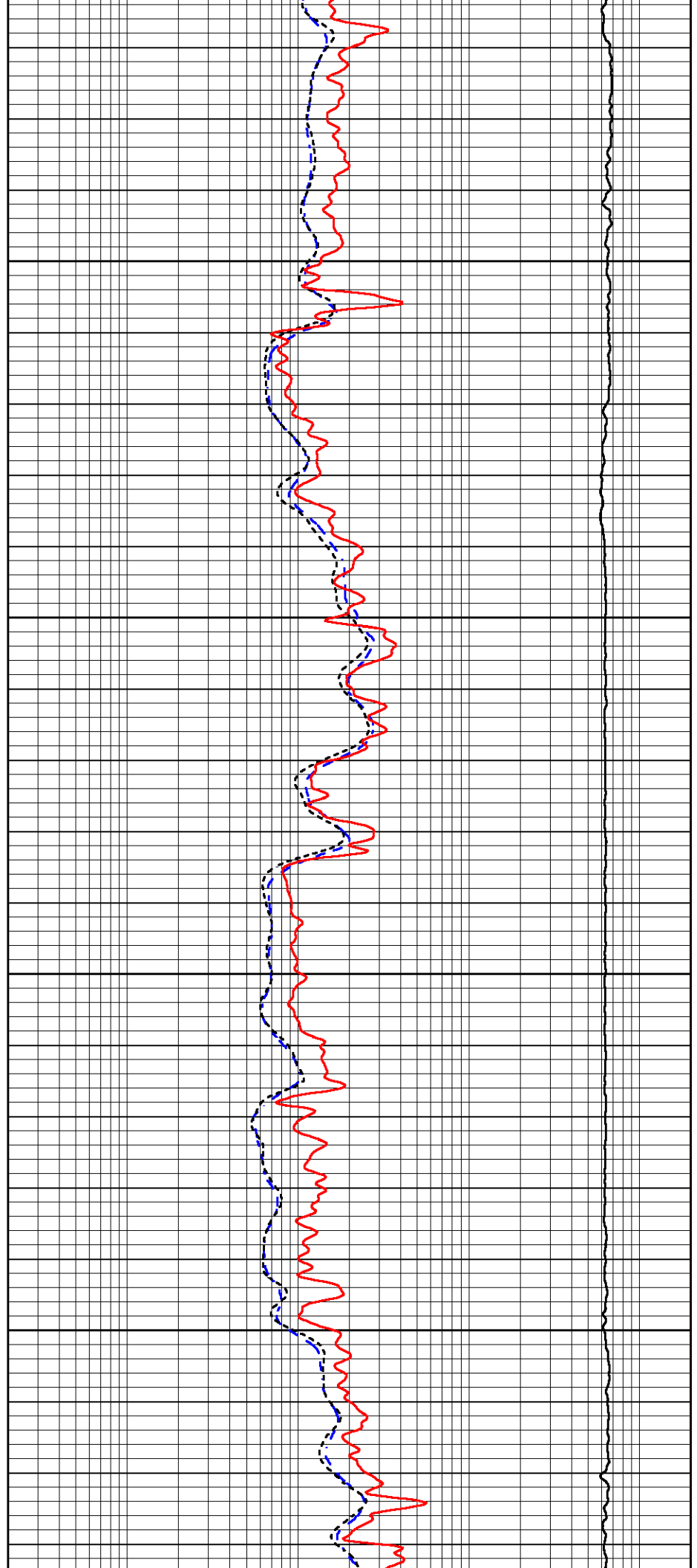


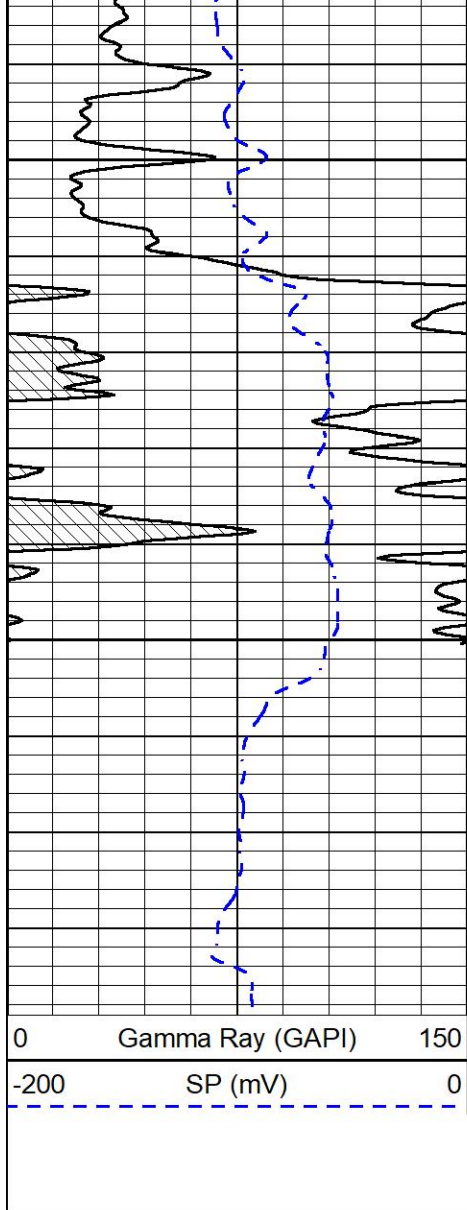
2550

2600

2650

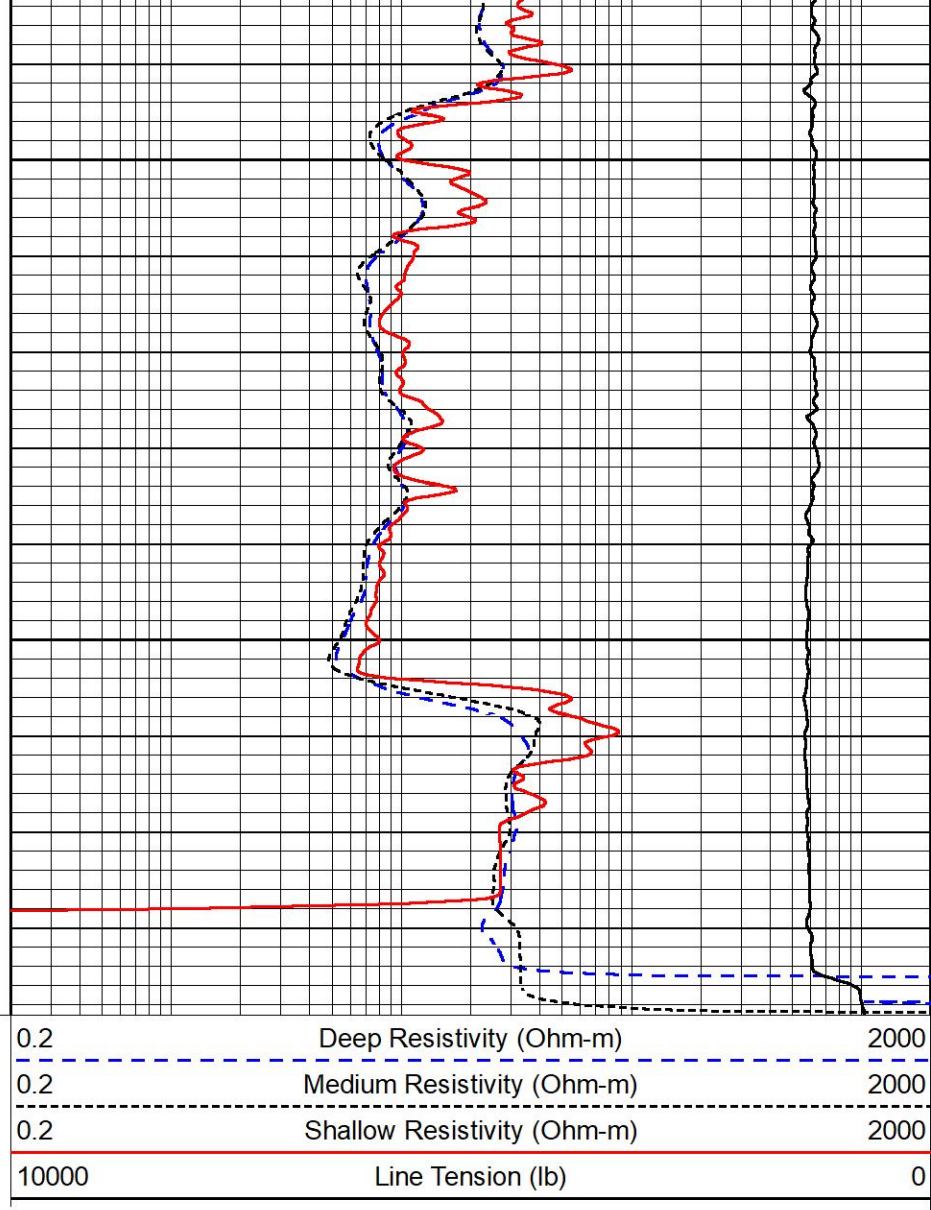
2700





2750

2800

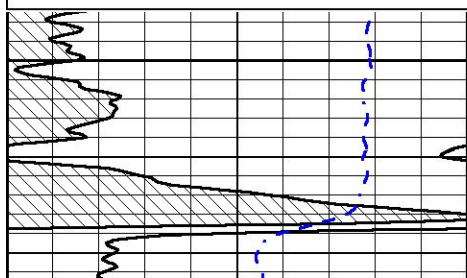
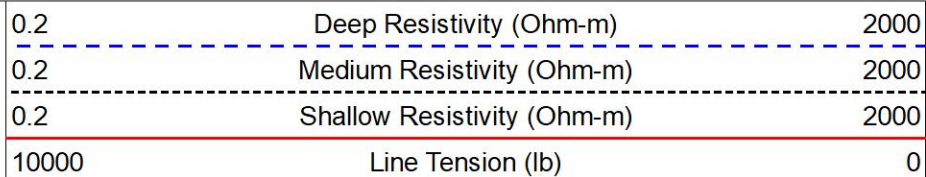
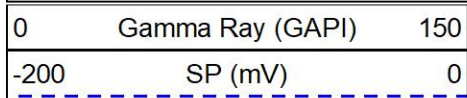


MIDWEST WIRELINE

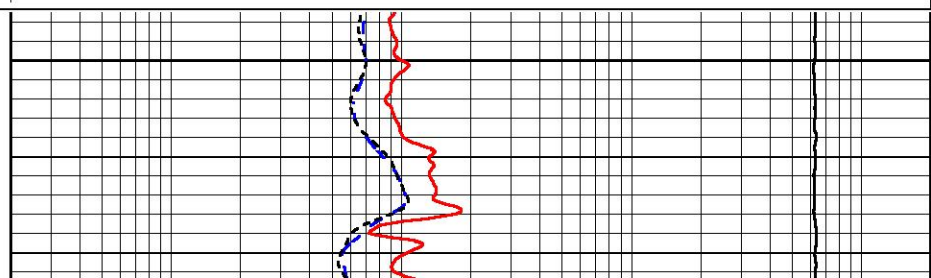
REPEAT SECTION

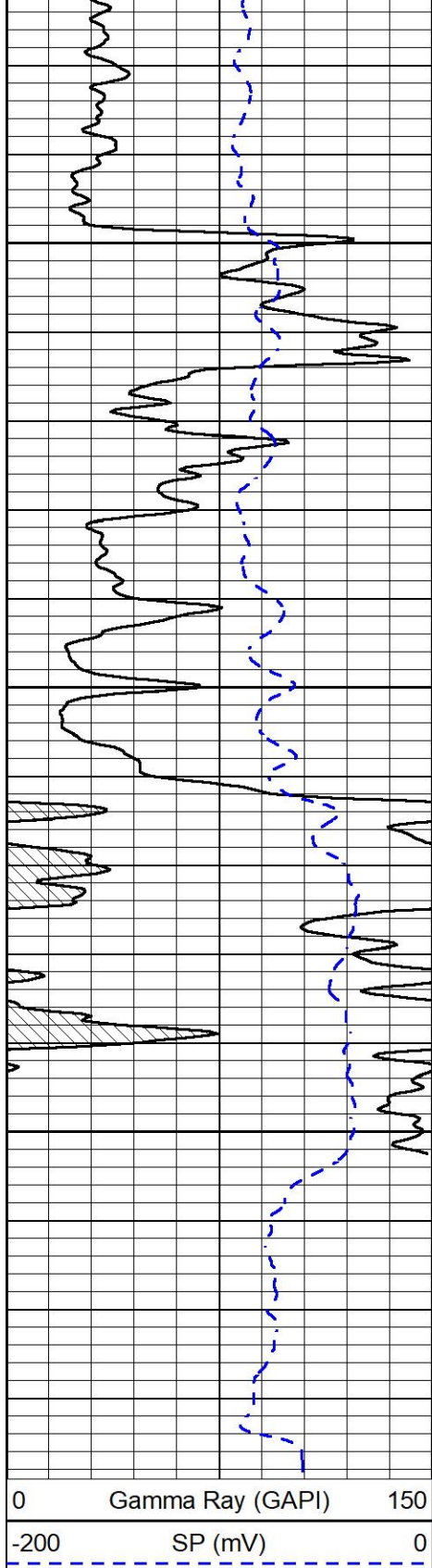
REPEAT PASS

Database File epoc_t wiebe #31-6.db
 Dataset Pathname StkMI/pass2.1
 Presentation Format _dil
 Dataset Creation Fri Nov 19 15:48:37 2021
 Charted by Depth in Feet scaled 1:240



2650

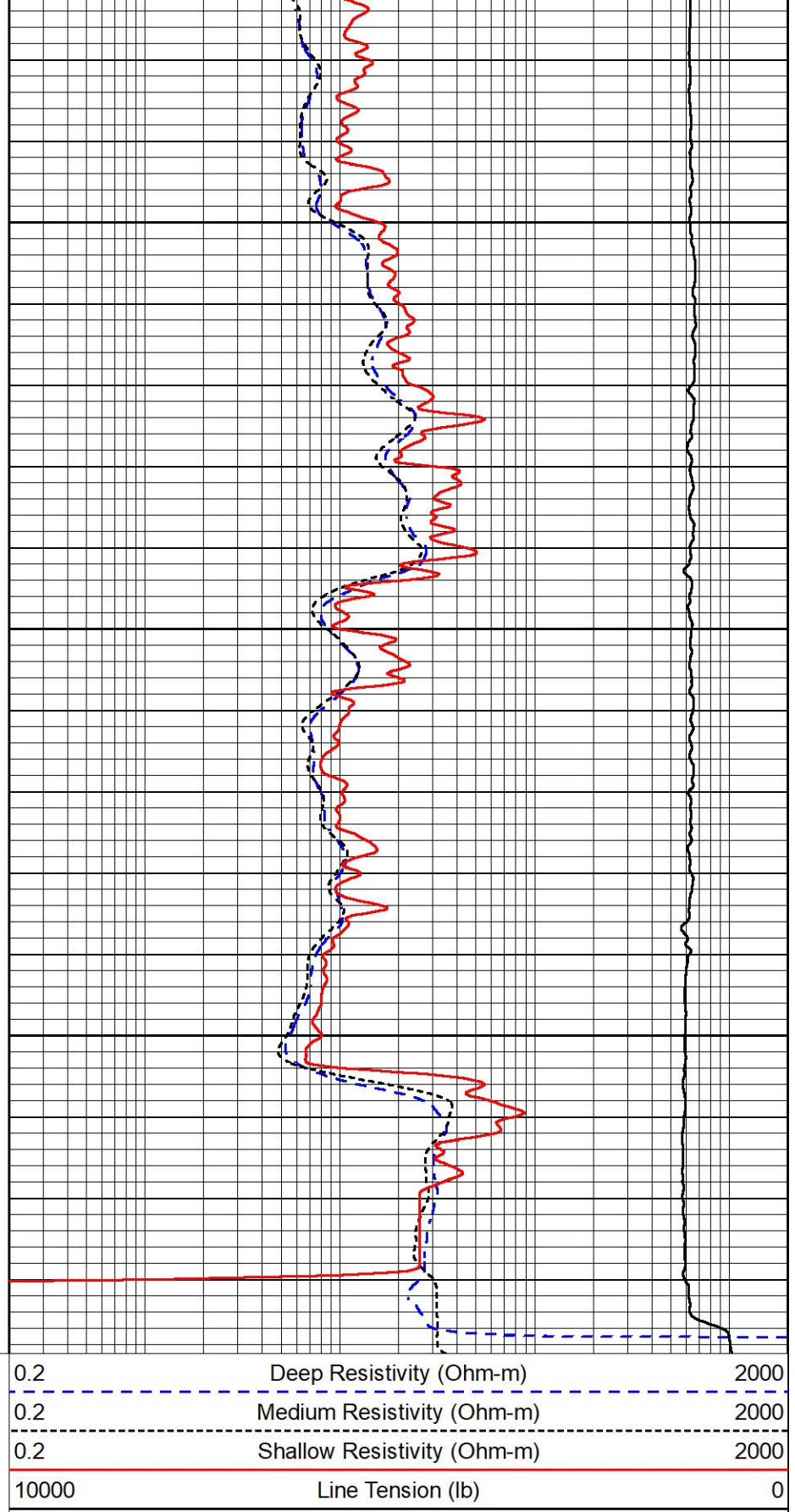




2700

2750

2800



Company EPOC LLC

Well T. Wiebe #31-6

Field Hazlett

County Butler

State Kansas

