



MIDWEST WIRELINE

# DUAL COMP POROSITY LOG

Company Talon Group, LLC  
 Well Roger 1-19  
 Field Hiney  
 County Lane State Kansas

Company Talon Group, LLC  
 Well Roger 1-19  
 Field Hiney  
 County Lane  
 State Kansas

Location: API #: 15-101-22661-00-00  
 2002 FSL 1136 FEL  
 SEC 20 TWP 19S RGE 28W  
 Permanent Datum Ground Level Elevation 2790  
 Log Measured From Kelly Bushing  
 Drilling Measured From Kelly Bushing  
 Other Services  
 DIL  
 MEL  
 Elevation  
 K.B. 2800  
 D.F.  
 G.L. 2790

Date	11/4/2021						
Run Number	One						
Type Log	CNL/CDL						
Depth Driller	4660						
Depth Logger	4658						
Bottom Logged Interval	4637						
Top Logged Interval	3700						
Type Fluid In Hole	Chemical						
Salinity, PPM CL	3500						
Density	9.5						
Level	Full						
Max. Rec. Temp. F	123						
Operating Rig Time	3.5 Hour						
Equipment -- Location	P-24 HAYS						
Recorded By	D Schmidt						
Witnessed By	Vern Schrag						
Borehole Record		Casing Record					
Run No.	Bit	From	To	Size	Wgt.	From	To
One	12.25	0	267	8.625	23	0	267
Two	7.875	267	TD				

<<< Fold Here >>>

All interpretations are opinions based on inferences from electrical or other measurements and Midwest Wireline Services, LLC cannot and does not guarantee the accuracy or correctness of any interpretation, and Midwest Wireline Services, LLC will not be liable or responsible for any loss, costs, damages, or expenses incurred or sustained by anyone resulting from any interpretation made by any of our officers, agents or employees.

Comments

N/A DENOTES NOT AVAILABLE OR NON-APPLICABLE.

Dighton  
 6 South, 1 East, 1/2 South  
 West into

Log Measured From: Kelly Bushing Ft. Above Permanent Datum

THANK YOU FOR USING MIDWEST WIRELINE LLC  
 785-625-3858

Your Midwest Wireline Crew		This Log Record Was Witnessed By	
Engineer: D Schmidt	Operator: C McLaughlin	Primary Witness: Vern Schrag	Secondary Witness:
Operator:	Operator:	Secondary Witness:	Secondary Witness:

Sensor	Offset (ft)	Schematic	Description	Length (ft)	O.D. (in)	Weight (lb)
GR	33.00		GR-M&W (233-M&W)	3.00	3.50	50.00
CNLSC CNSSC	29.90 29.15		CNT-M&W (207-MW)	5.50	3.50	100.00
LSD DCAL SSD	20.85 20.83 20.35		CDL-M&W (934-226)	8.50	4.00	250.00
RLL3F RLL3	15.80 15.80		DIL-PSI HIGH TEMP (952-828)	18.50	3.50	220.00
CILD	8.00		CILM	4.70		
SP	0.20					

Dataset: talon\_roger 1-19.db: field/well/stack/pass3.9  
 Total length: 35.50 ft  
 Total weight: 620.00 lb  
 O.D.: 4.00 in

# Log Variables

DatabaseC:\ProgramData\Warrior\Data\talon\_roger 1-19.db  
 Dataset field/well/stack/pass3.9/\_vars\_

## Top - Bottom

A	BOREID in	BOTTEMP degF	CASEOD in	CASETHCK in	FLUIDDEN g/cc	M	MATRXDEN g/cc
1	7.875	123	5.5	0	1	2	2.71
NPORSEL	PERFS	SNDERR mmho/m	SNDERRM mmho/m	SPSHIFT mV	SRFTEMP degF	SZCOR	TDEPTH ft
Limestone	0	0	0	140	55	Off	4658

## Variable Description

A : Cement Factor (a)  
 BOREID : Borehole I.D.  
 BOTTEMP : Bottom Hole Temperature  
 CASEOD : Casing O.D.  
 CASETHCK : Casing Thickness  
 FLUIDDEN : Fluid Density  
 M : Cement Exp (m)  
 MATRXDEN : Matrix Density

NPORSEL : Neutron Porosity Curve Select  
 PERFS : Perforation Flag  
 SNDERR : Deep Sonde Error Correction  
 SNDERRM : Medium Sonde Error Correction  
 SPSHIFT : S.P. Baseline Offset  
 SRFTEMP : Surface Temperature  
 SZCOR : CN Size Cor. ?  
 TDEPTH : Total Depth



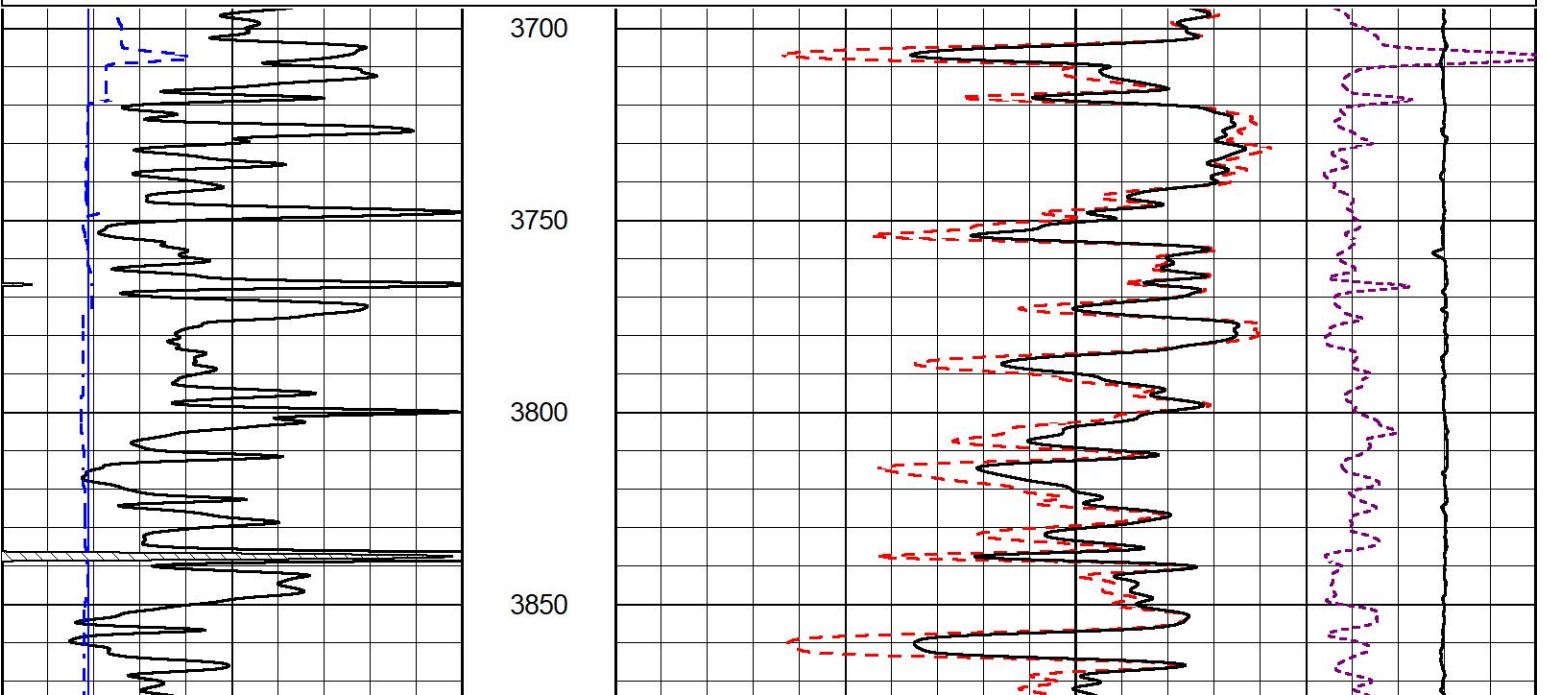
## 2" SCALE BULK DENSITY

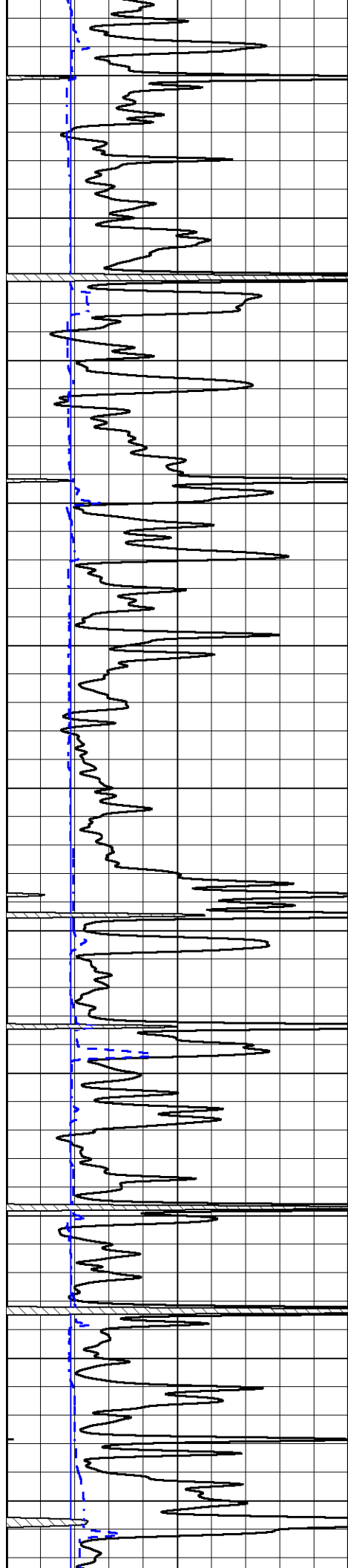
### MAIN PASS

Database File talon\_roger 1-19.db  
 Dataset Pathname stack/pass4.1  
 Presentation Format \_cdl  
 Dataset Creation Thu Nov 04 06:08:41 2021  
 Charted by Depth in Feet scaled 1:600

0	Gamma Ray (GAPI)	150
6	Caliper (in)	16

30	Compensated Density (pu)	-10
2	Bulk Density (g/cc)	3
15000	Line Tension (lb)	0
-0.25	Correction (g/cc)	0.25





3900

3950

4000

4050

4100

4150

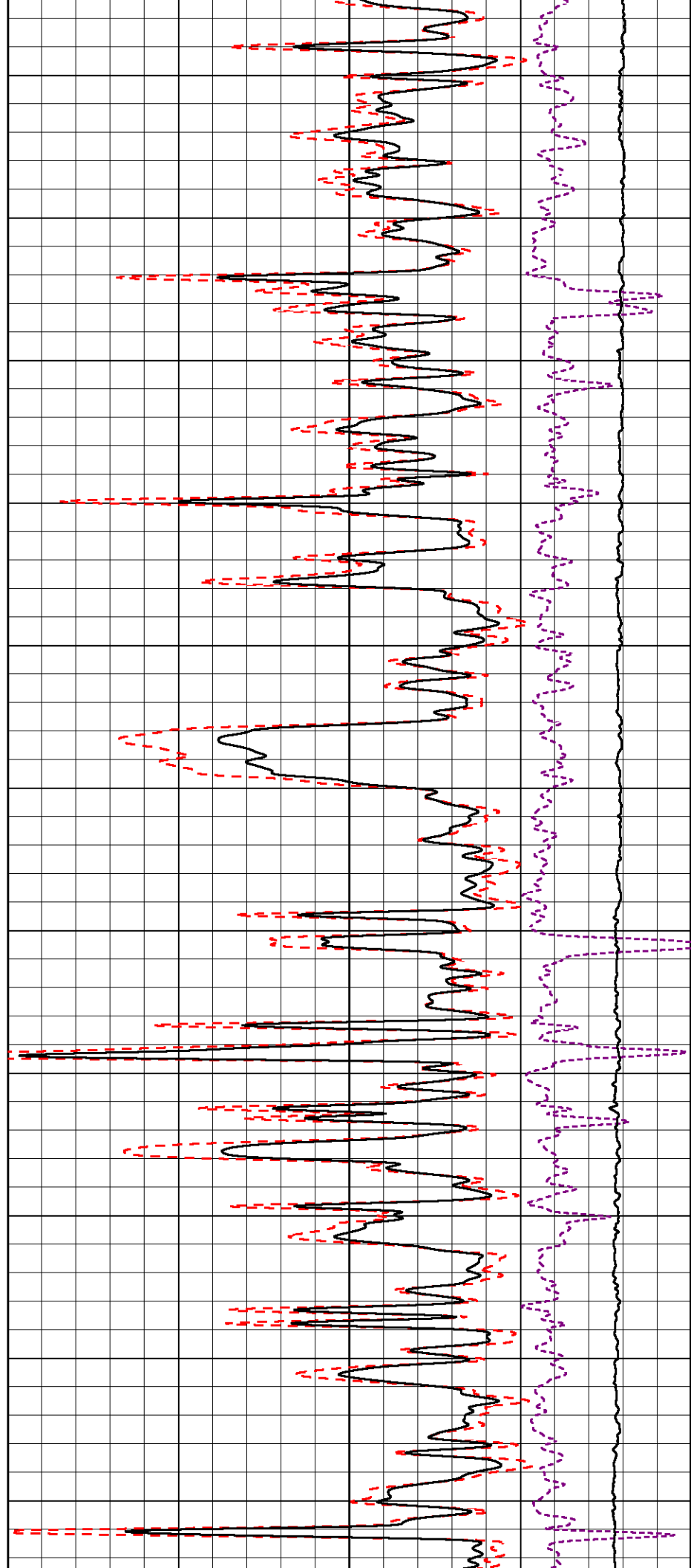
4200

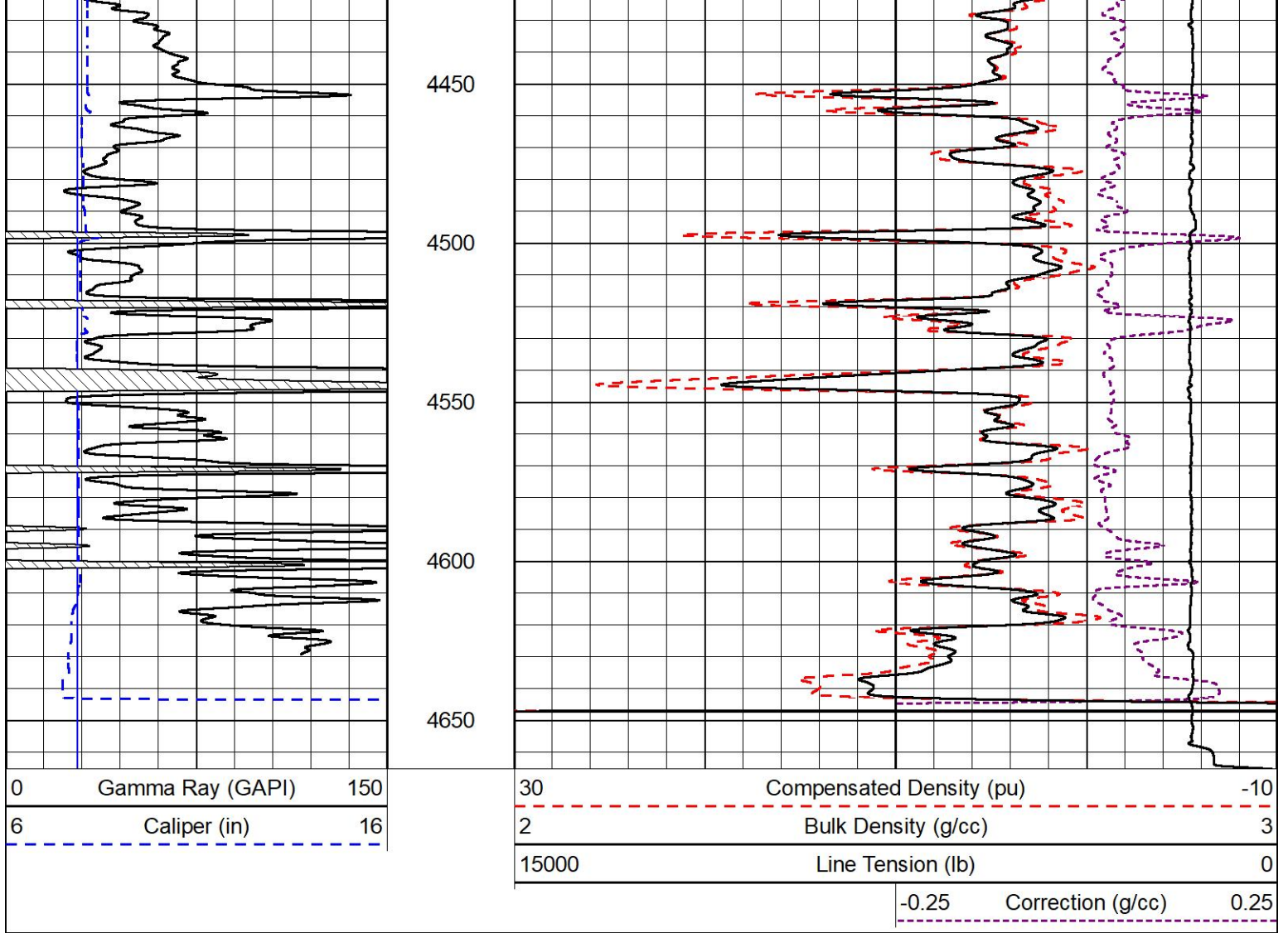
4250

4300

4350

4400

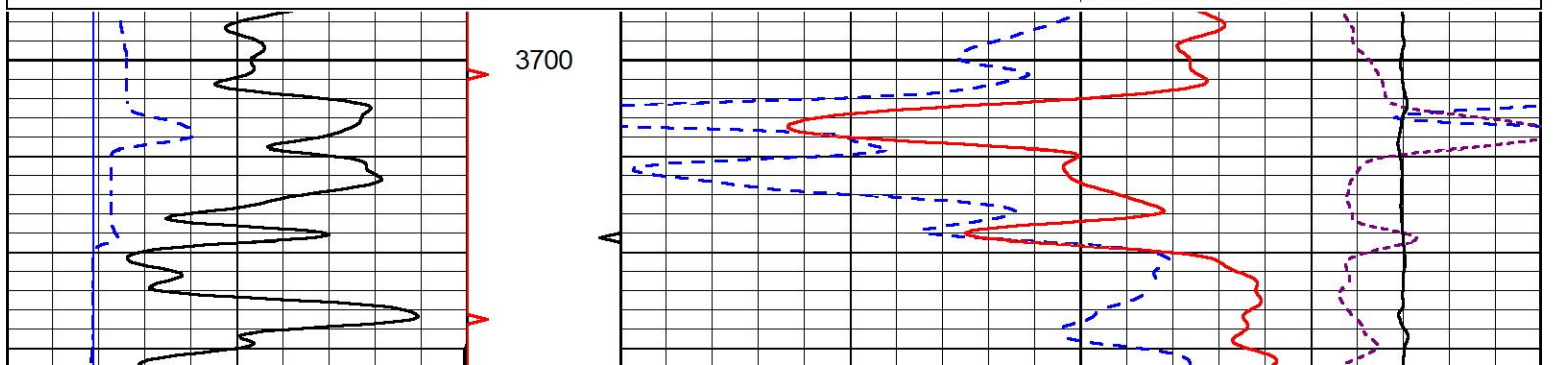
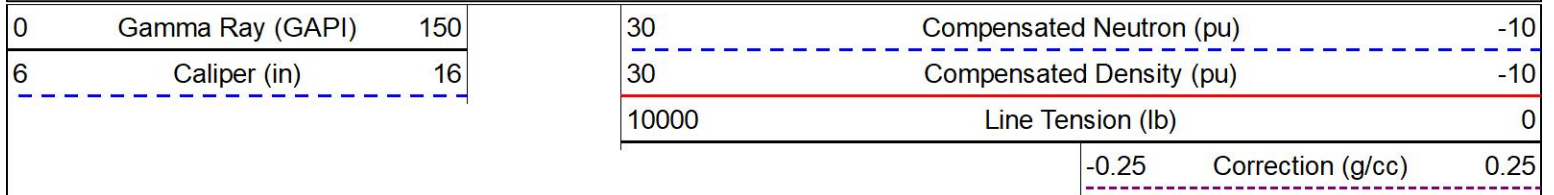


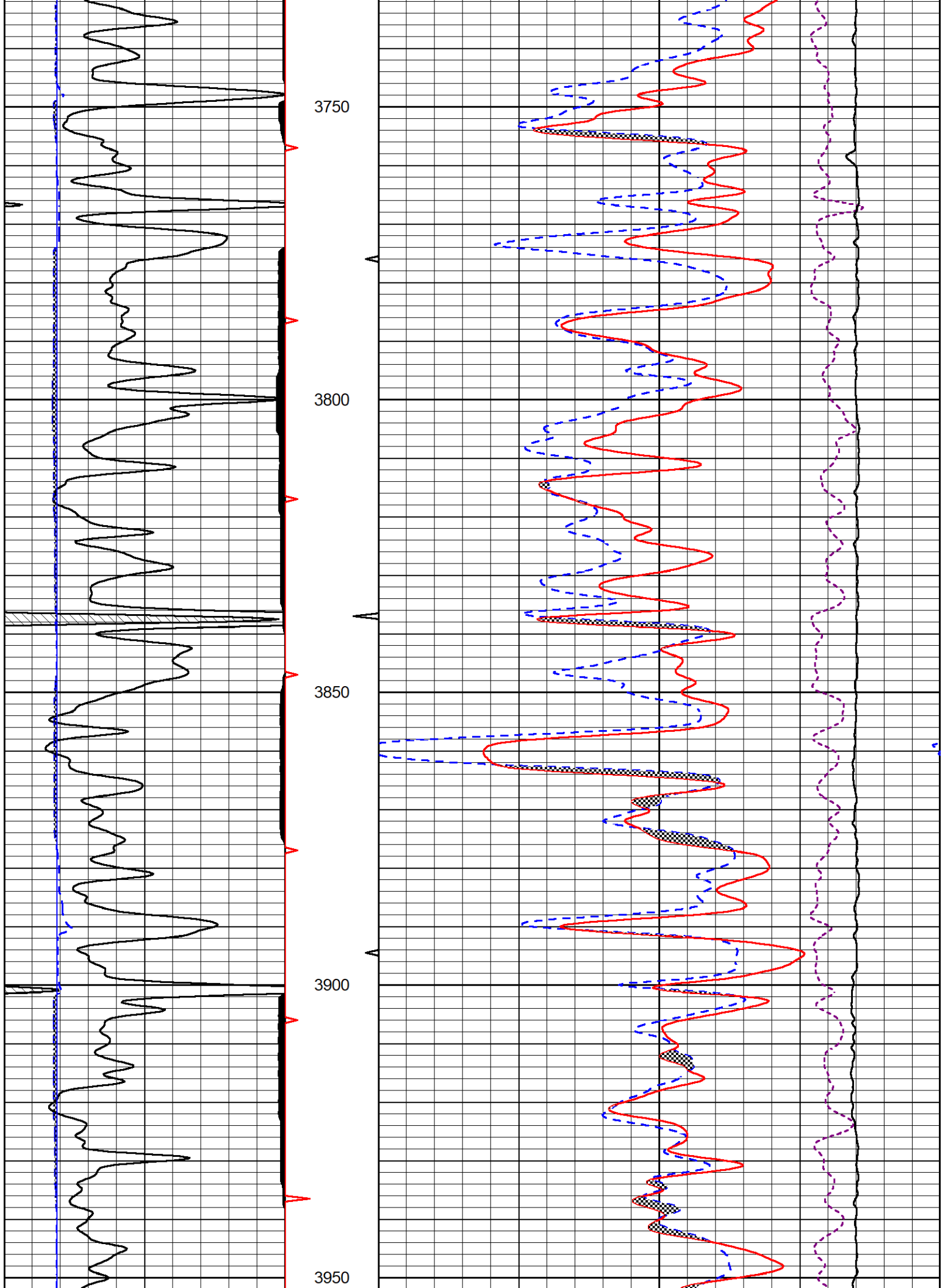


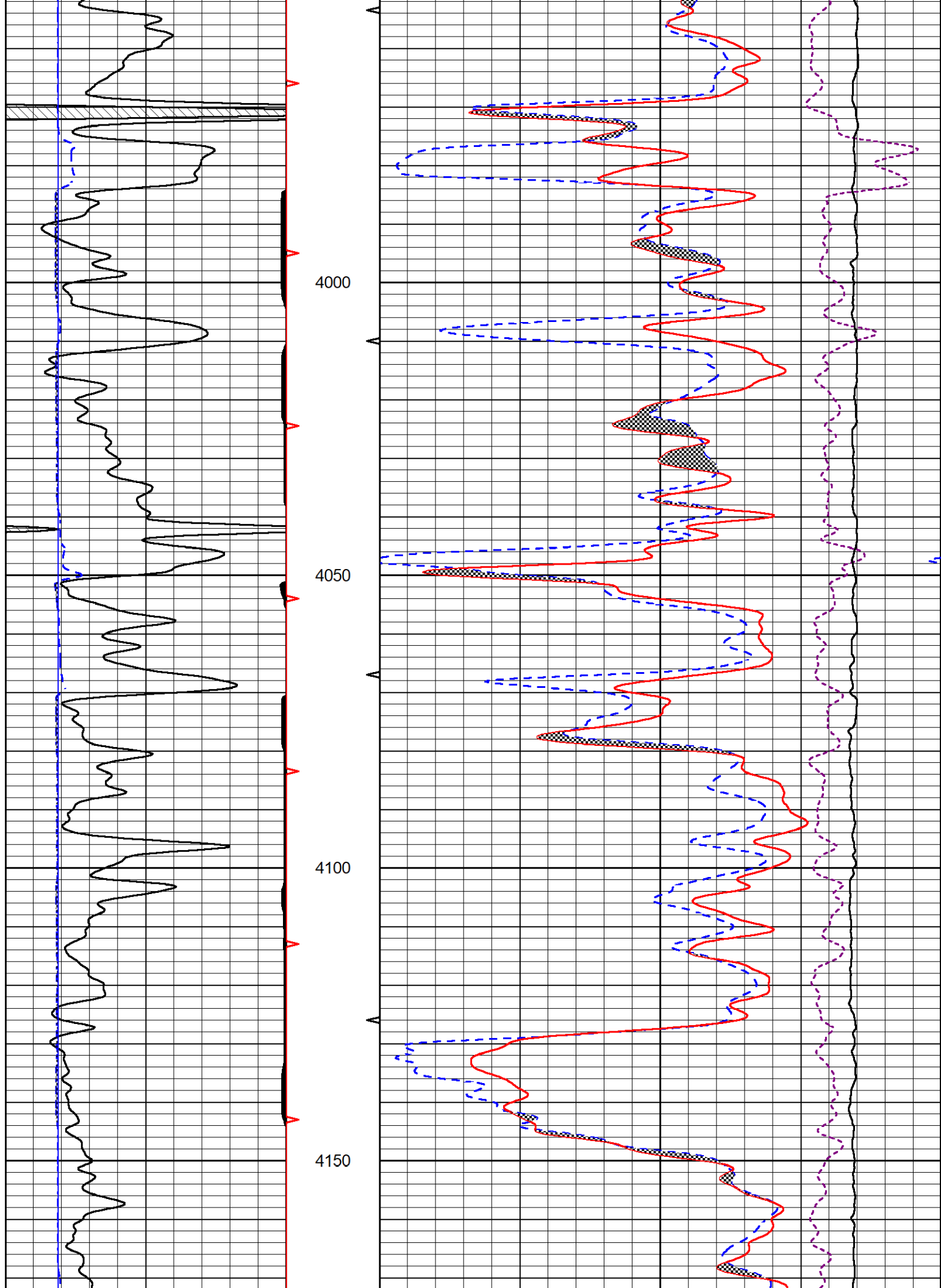
# DETAIL SECTION

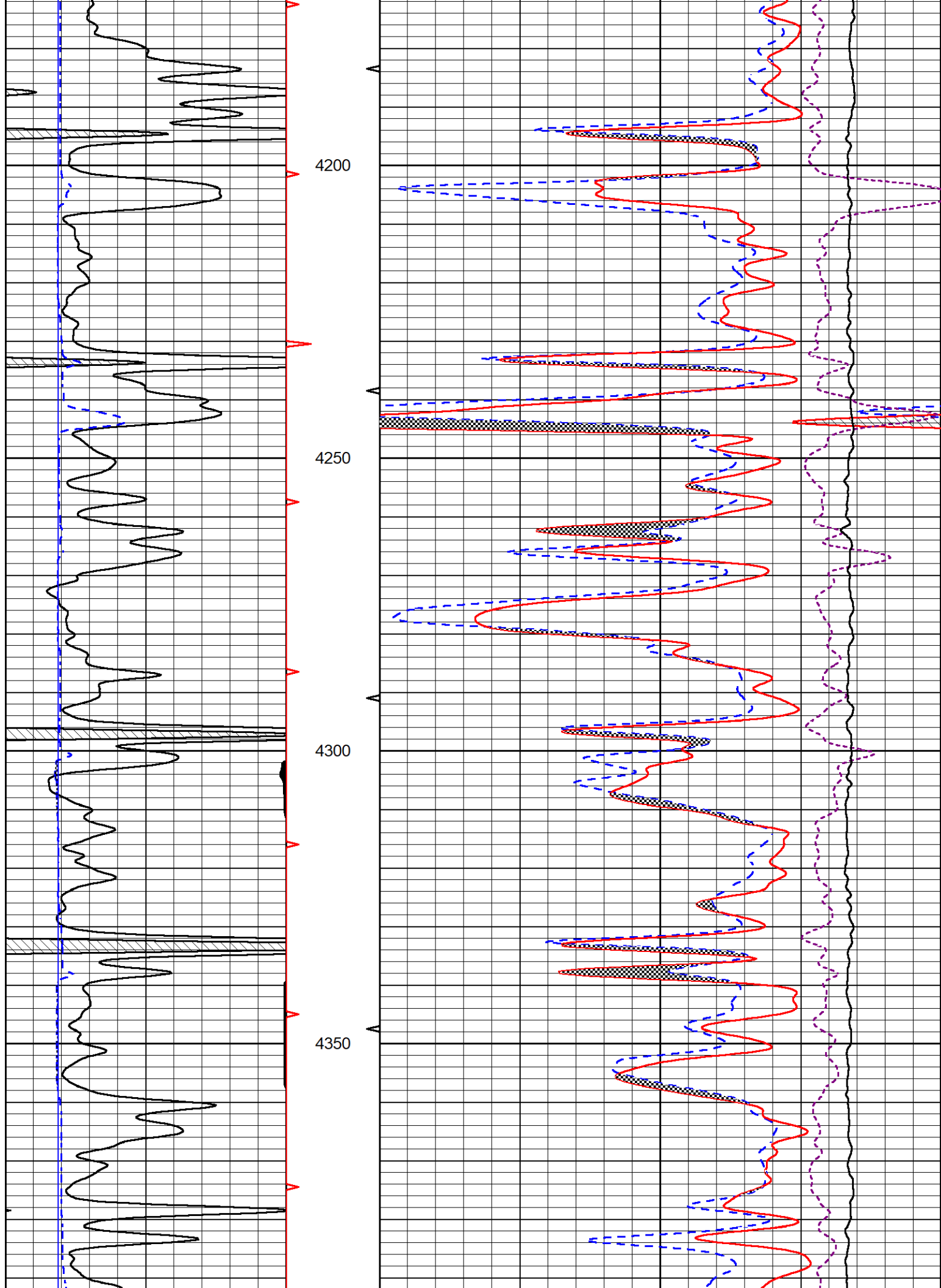
## MAIN PASS

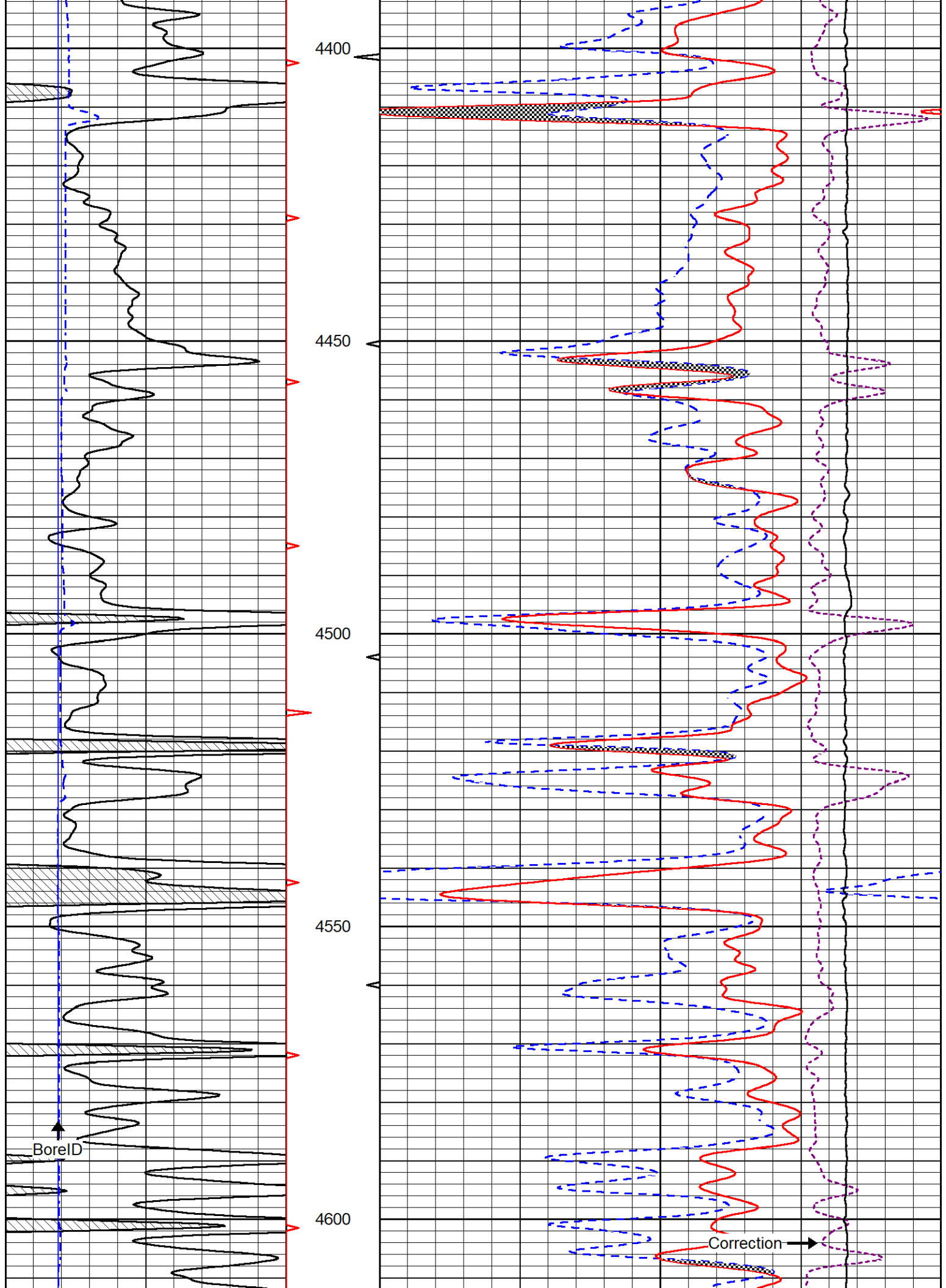
Database File talon\_roger 1-19.db  
 Dataset Pathname stack/pass3.1  
 Presentation Format \_CNDLS~1  
 Dataset Creation Thu Nov 04 05:57:49 2021  
 Charted by Depth in Feet scaled 1:240

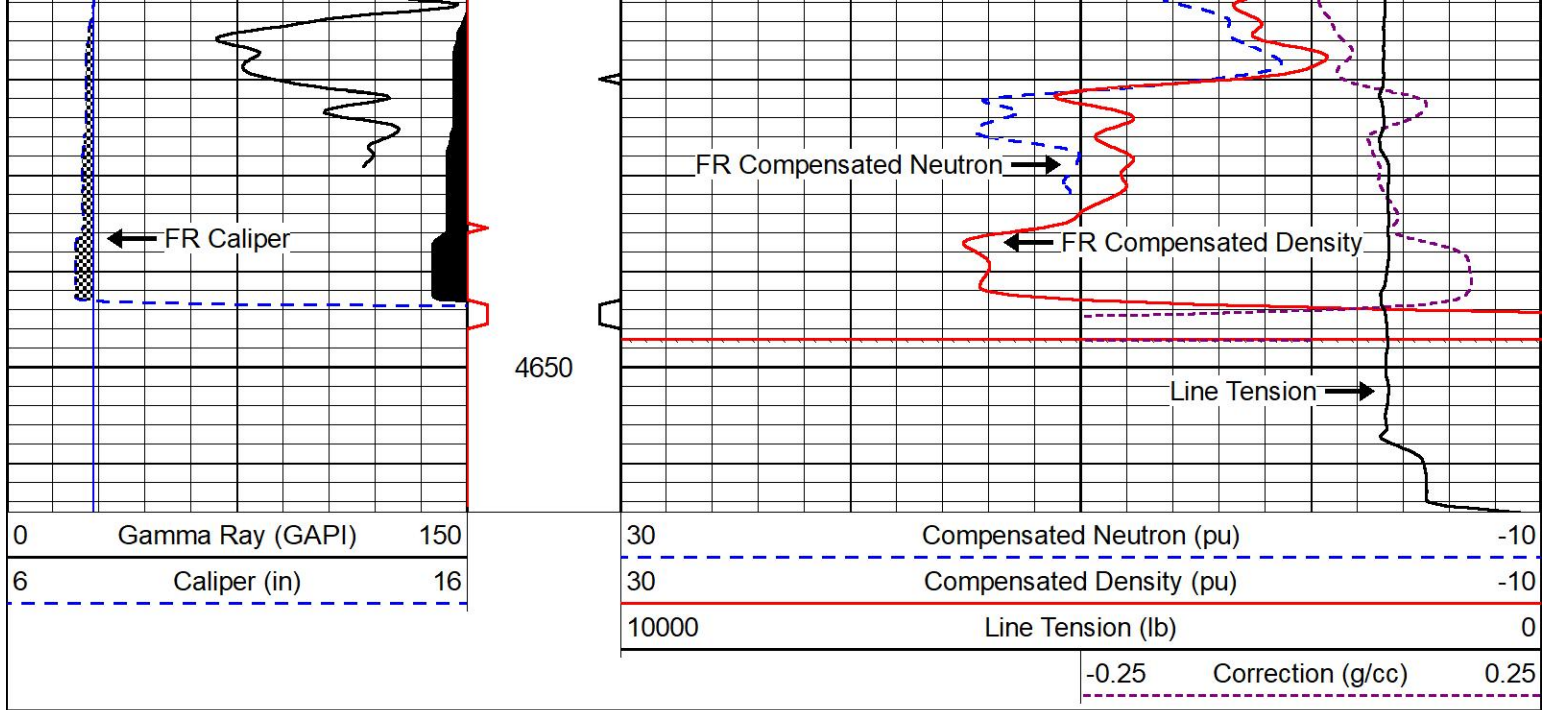










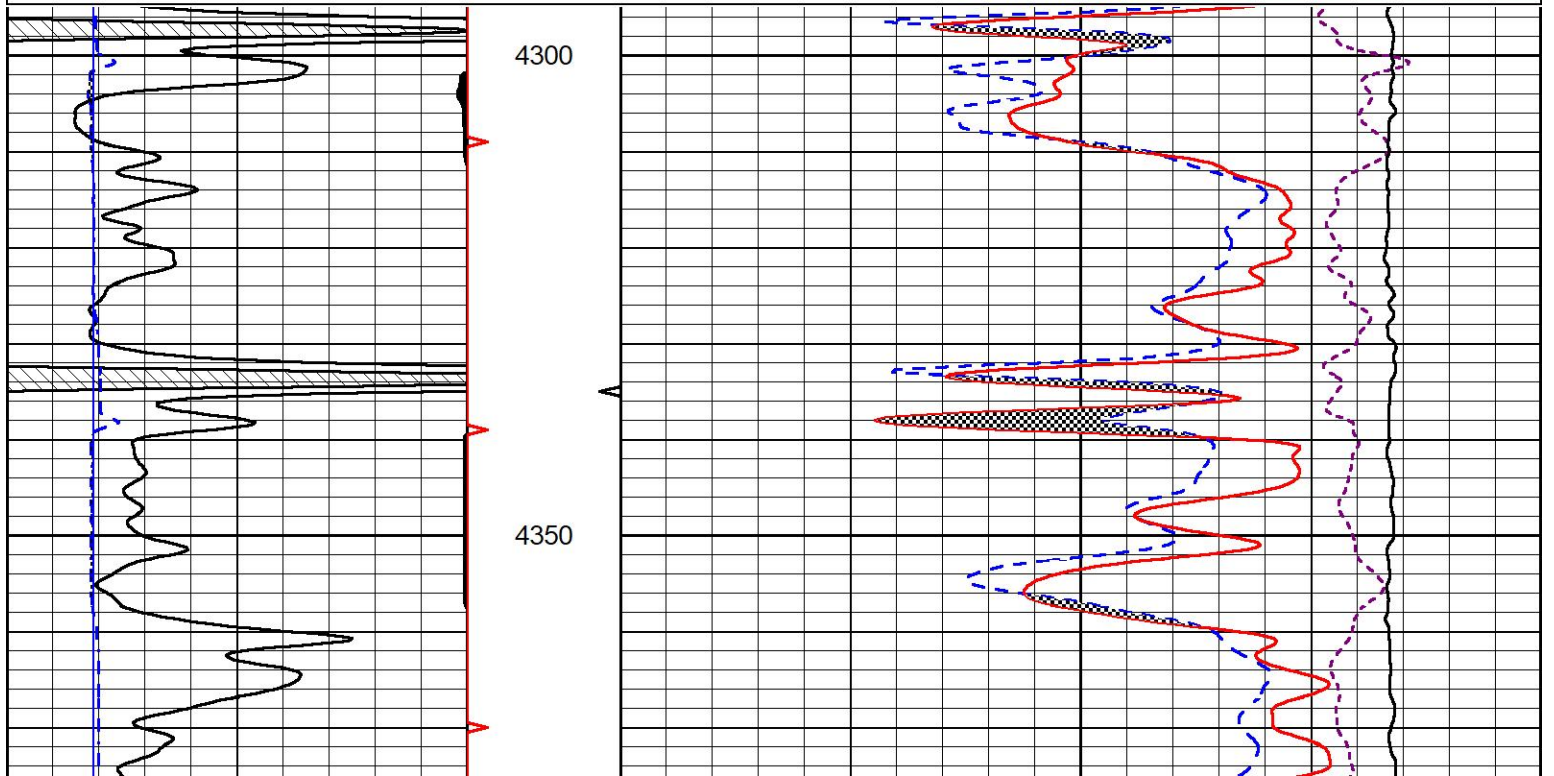
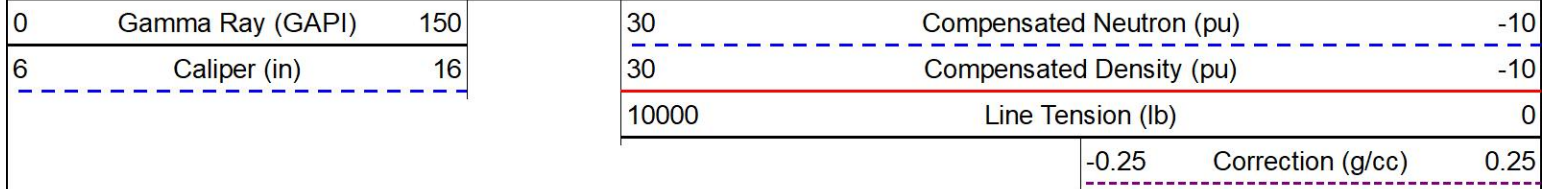


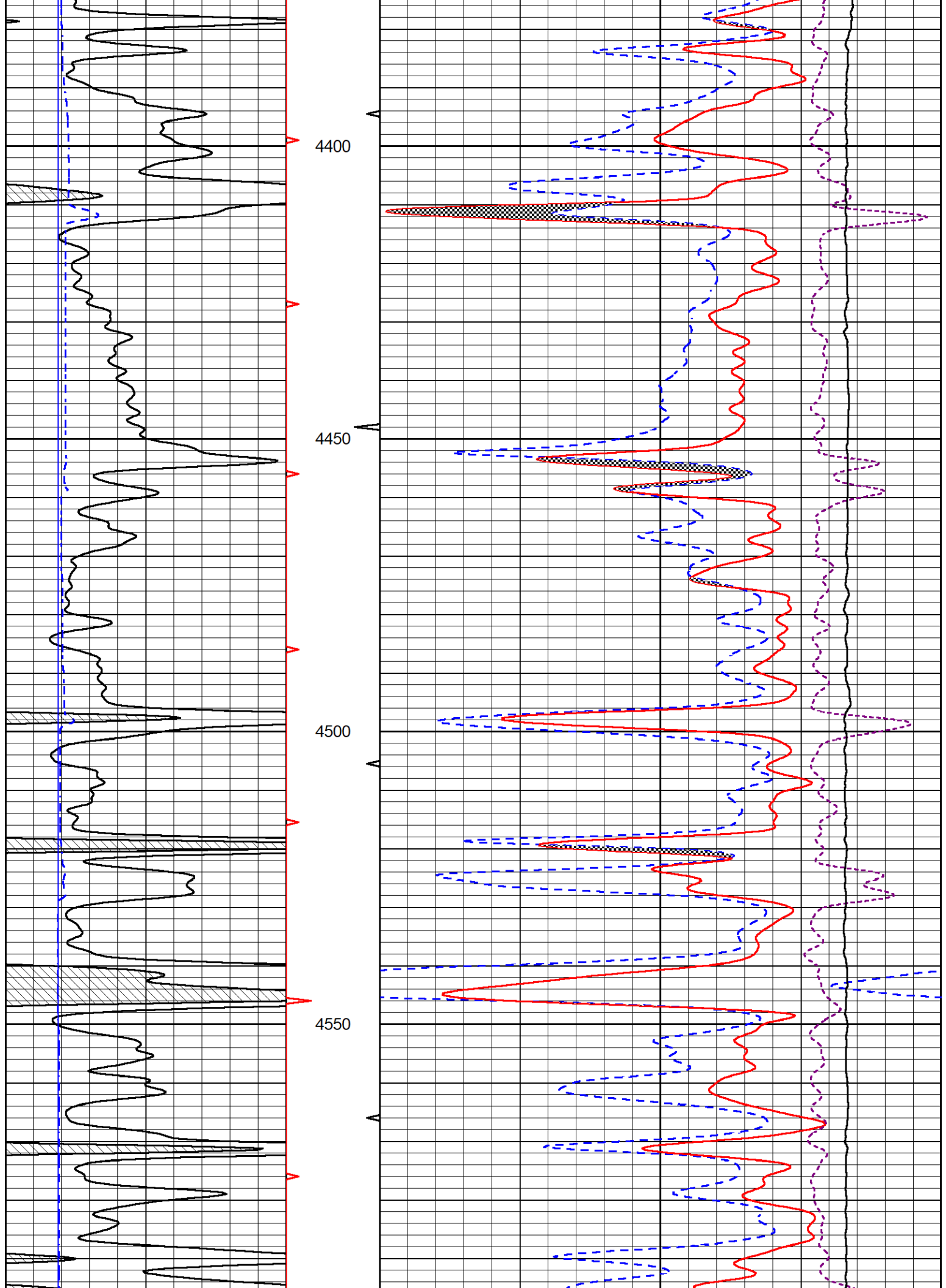
MIDWEST WIRELINE

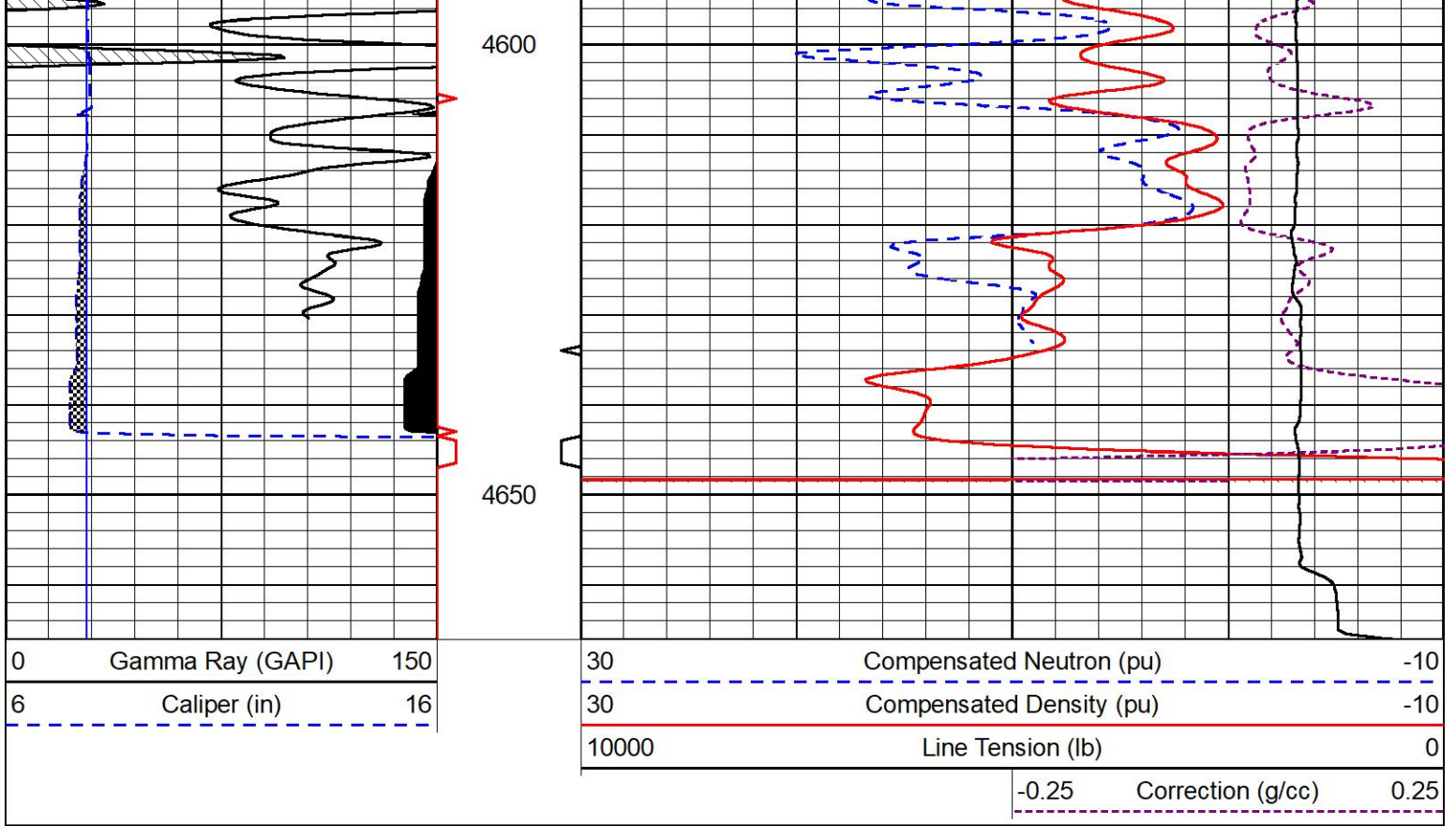
## REPEAT SECTION

### REPEAT PASS

Database File talon\_roger 1-19.db  
 Dataset Pathname stack/pass2.1  
 Presentation Format \_CNDLS~1  
 Dataset Creation Thu Nov 04 05:46:14 2021  
 Charted by Depth in Feet scaled 1:240







Company Talon Group, LLC  
 Well Roger 1-19  
 Field Hiney  
 County Lane  
 State Kansas