



MIDWEST WIRELINE

MICRORESISTIVITY LOG

Company Talon Group, LLC
 Well Roger 1-19
 Field Hiney
 County Lane State Kansas

Company Talon Group, LLC
 Well Roger 1-19
 Field Hiney
 County Lane
 State Kansas

Location: API #: 15-101-22661-00-00
 2002 FSL 1136 FEL
 SEC 20 TWP 19S RGE 28W
 Permanent Datum Ground Level Elevation 2790
 Log Measured From Kelly Bushing
 Drilling Measured From Kelly Bushing
 Other Services
 CNL CDL
 DIL
 Elevation
 K.B. 2800
 D.F.
 G.L. 2790

Date	11/4/2021
Run Number	Two
Depth Driller	4660
Depth Logger	4658
Bottom Logged Interval	4657
Top Log Interval	200
Casing Driller	8:625 @ 267
Casing Logger	262
Bit Size	7.875
Type Fluid in Hole	Chemical
Salinity, ppm CL	3500
Density / Viscosity	9.5 60
pH / Fluid Loss	11.0 8.8
Source of Sample	FLOWLINE
Rm @ Meas. Temp	.3 @ 55
Rmt @ Meas. Temp	.23 @ 55
Rmc @ Meas. Temp	.41 @ 55
Source of Rmf / Rmc	CHARTS
Rm @ BHT	.22 @ 123
Operating Rig Time	3.5 Hours
Max Rec. Temp. F	123
Equipment Number	P-24
Location	HAYS
Recorded By	D Schmidt
Witnessed By	Vern Schrag
	C McLaughlin

<<< Fold Here >>>

All interpretations are opinions based on inferences from electrical or other measurements and Midwest Wireline LLC cannot and does not guarantee the accuracy or correctness of any interpretation, and Midwest Wireline LLC will not be liable or responsible for any loss, costs, damages, or expenses incurred or sustained by anyone resulting from any interpretation made by any of our officers, agents or employees.

Comments

N/A DENOTES NOT AVAILABLE OR NON-APPLICABLE.

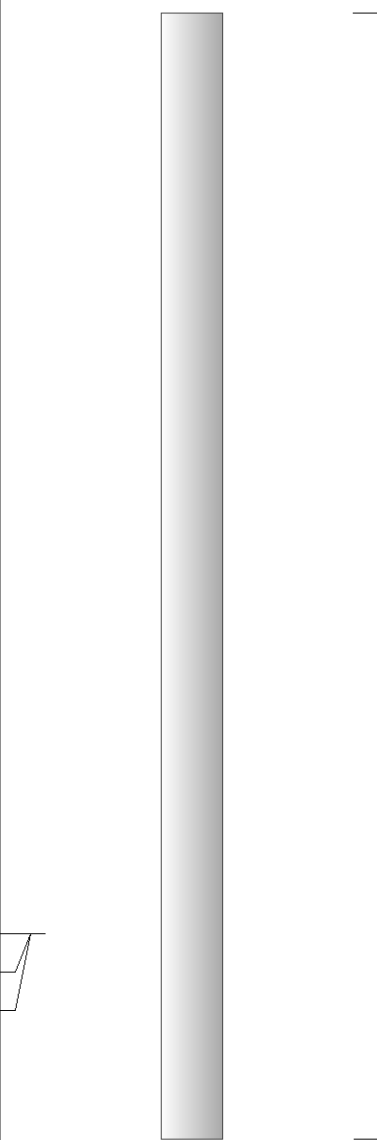
Dighton
 6 South, 1 East, 1/2 South
 West into

Log Measured From: Kelly Bushing Ft. Above Permanent Datum

THANK YOU FOR USING MIDWEST WIRELINE LLC
 785-625-3858

Your Midwest Wireline Crew		This Log Record Was Witnessed By	
Engineer: D Schmidt	Operator:	Primary Witness: Vern Schrag	Secondary Witness:
Operator:	Operator:	Secondary Witness:	Secondary Witness:
Operator:		Secondary Witness:	

Operator	Offset (ft)	Substrate	Description	Length (ft)	C.D. (in)	Weight (lb)
----------	-------------	-----------	-------------	-------------	-----------	-------------

Sensor	Offset (ft)	Schematic	Description	Length (ft)	O.D. (in)	Weight (lb)
MCAL MI MN	1.00 1.00 1.00		ML-Pengo (Pengo3)	5.50	3.50	100.00

Dataset: talon_roger 1-19.db: field/well/MEL/pass3
 Total length: 5.50 ft
 Total weight: 100.00 lb
 O.D.: 3.50 in

Log Variables

Database: C:\ProgramData\Warrior\Data\talon_roger 1-19.db
 Dataset: field/well/stack/pass3.1/_vars_

Top - Bottom

A	BOREID in	BOTTEMP degF	CASEOD in	CASETHCK in	FLUIDDEN g/cc	M	MATRXDEN g/cc
1	7.875	123	5.5	0	1	2	2.71
NPORSEL	PERFS	SNDERR mmho/m	SNDERRM mmho/m	SPSHIFT mV	SRFTEMP degF	SZCOR	TDEPTH ft
Limestone	0	0	0	140	55	Off	4658

Variable Description

A : Cement Factor (a)
 BOREID : Borehole I.D.
 BOTTEMP : Bottom Hole Temperature
 CASEOD : Casing O.D.
 CASETHCK : Casing Thickness
 FLUIDDEN : Fluid Density
 M : Cement Exp (m)
 MATRXDEN : Matrix Density

NPORSEL : Neutron Porosity Curve Select
 PERFS : Perforation Flag
 SNDERR : Deep Sonde Error Correction
 SNDERRM : Medium Sonde Error Correction
 SPSHIFT : S.P. Baseline Offset
 SRFTEMP : Surface Temperature
 SZCOR : CN Size Cor. ?
 TDEPTH : Total Depth



MIDWEST WIRELINE

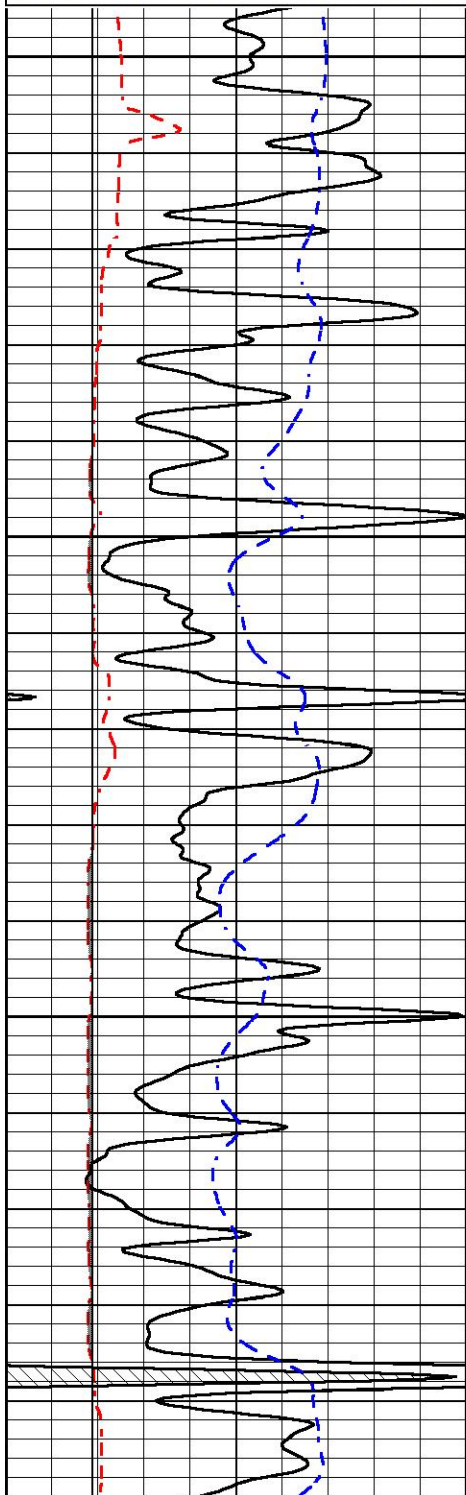
DETAIL SECTION

MAIN PASS

Database File talon_roger 1-19.db
 Dataset Pathname stack/pass3.1
 Presentation Format _micro
 Dataset Creation Thu Nov 04 05:57:49 2021
 Charted by Depth in Feet scaled 1:240

0	Gamma Ray (GAPI)	150
6	Caliper (in)	16
-200	SP (mV)	0

0	Micro Inverse 1 X 1 (Ohm-m)	40
0	Micro Normal 2" (Ohm-m)	40
10000	Line Weight (lb)	0

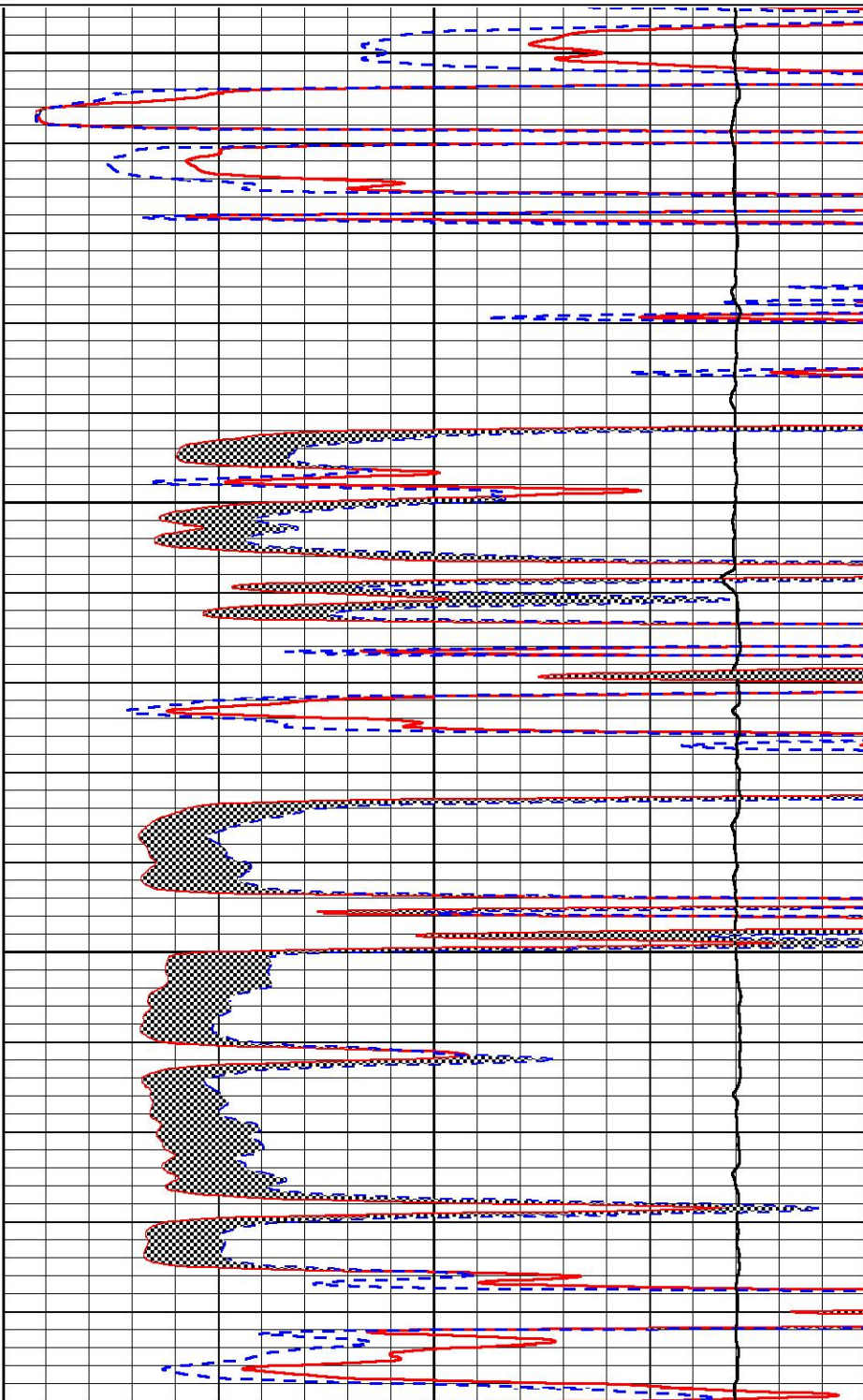


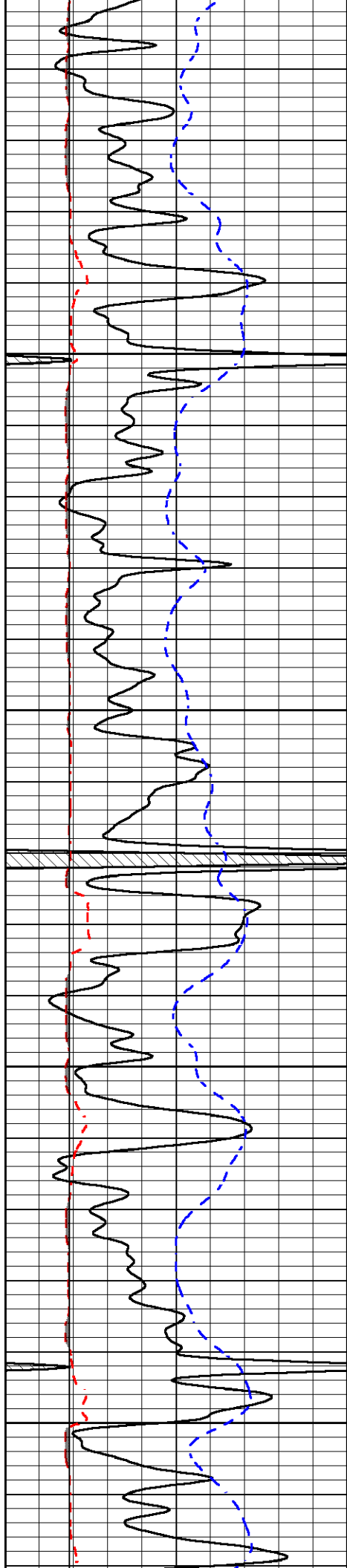
3700

3750

3800

3850





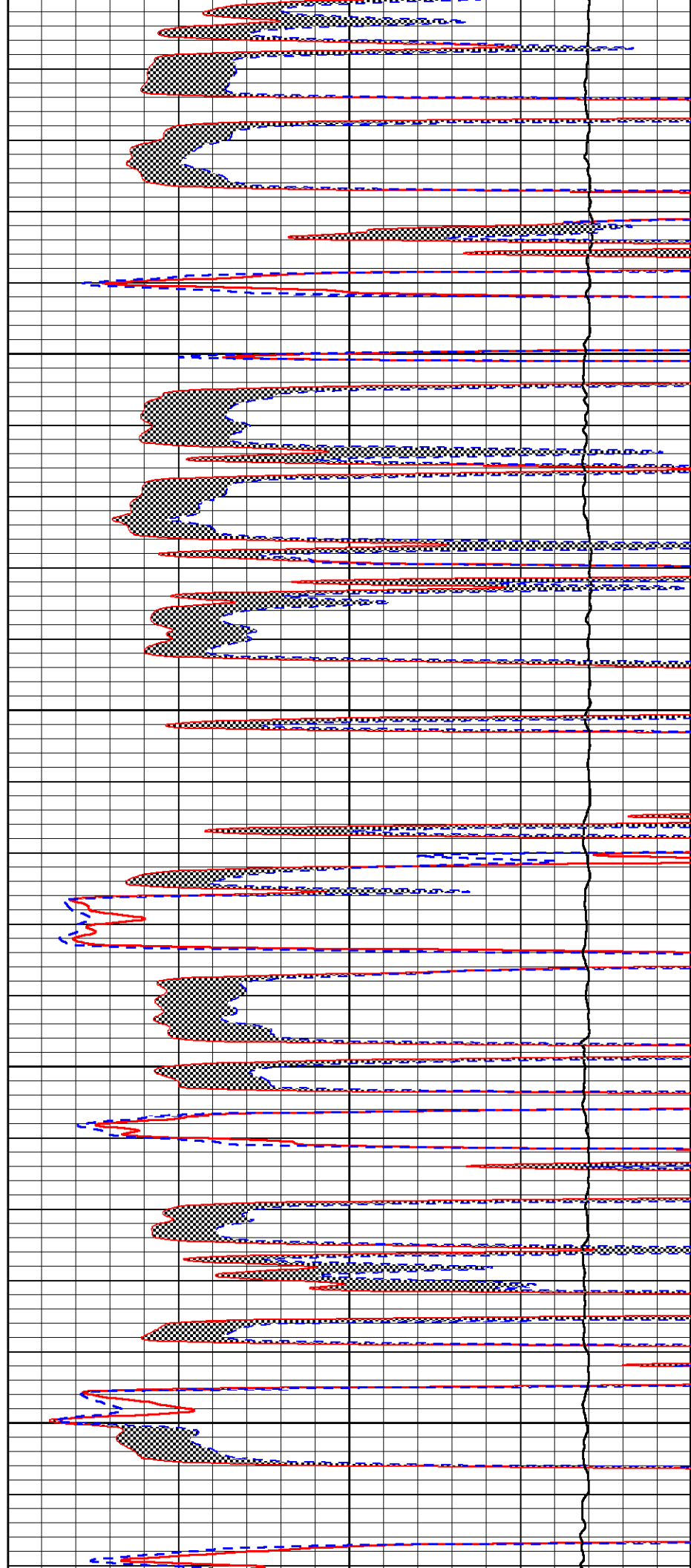
3850

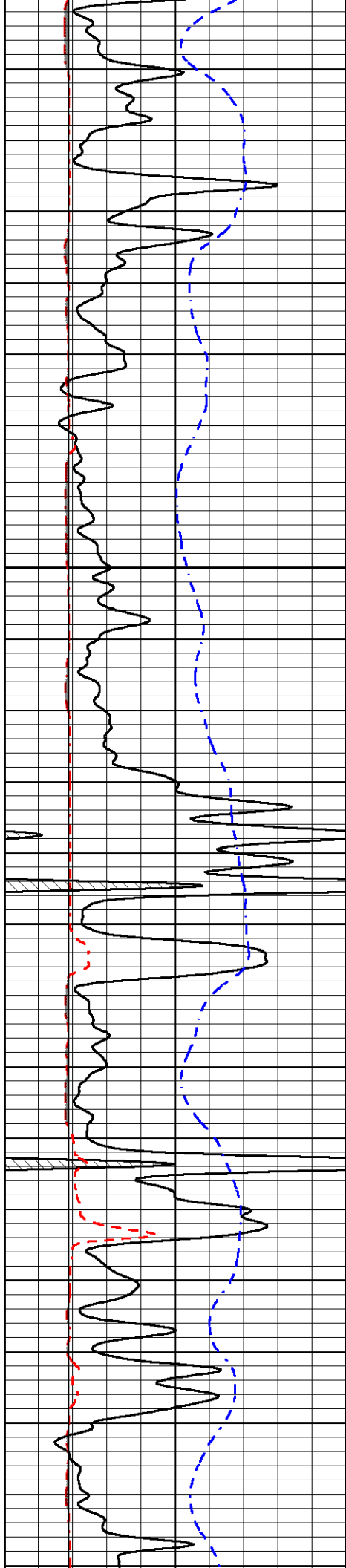
3900

3950

4000

4050



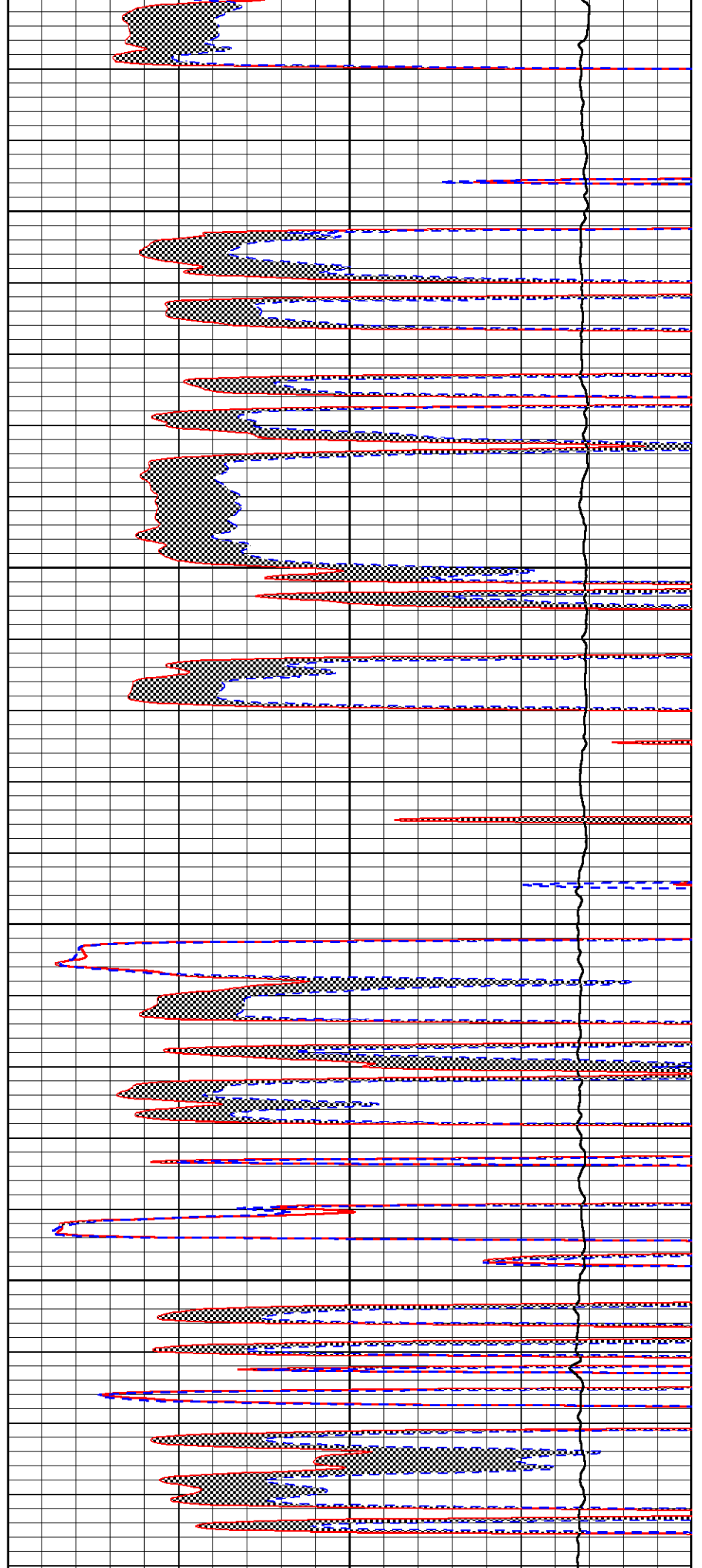


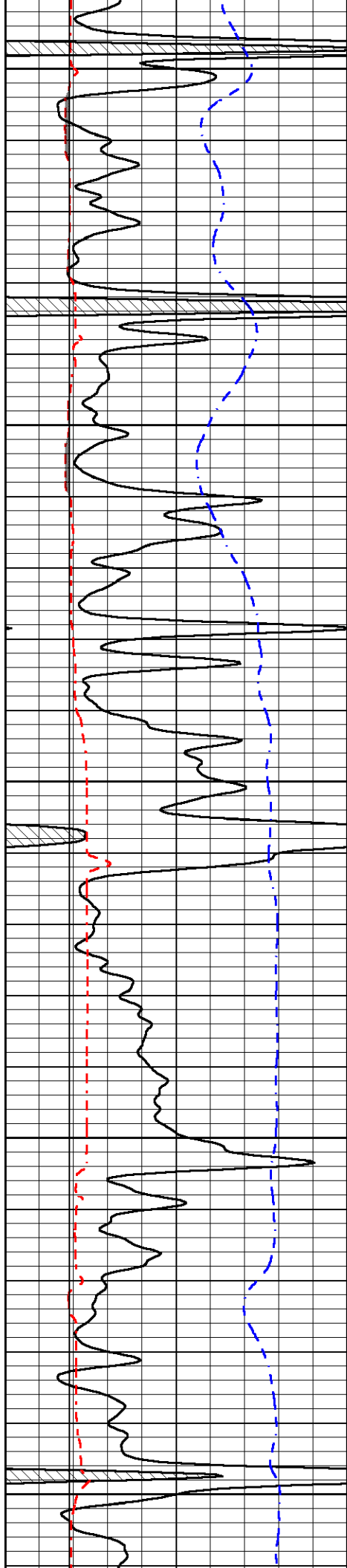
4100

4150

4200

4250





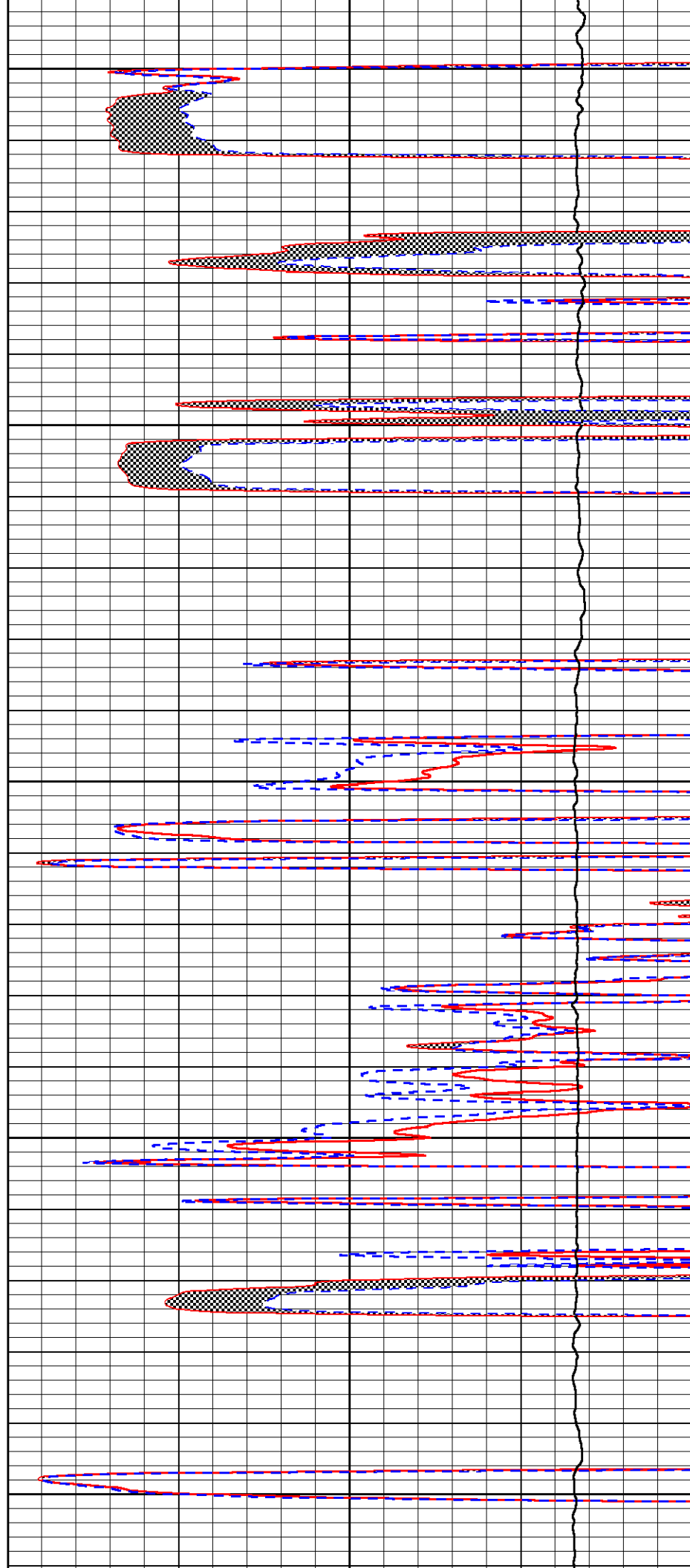
4300

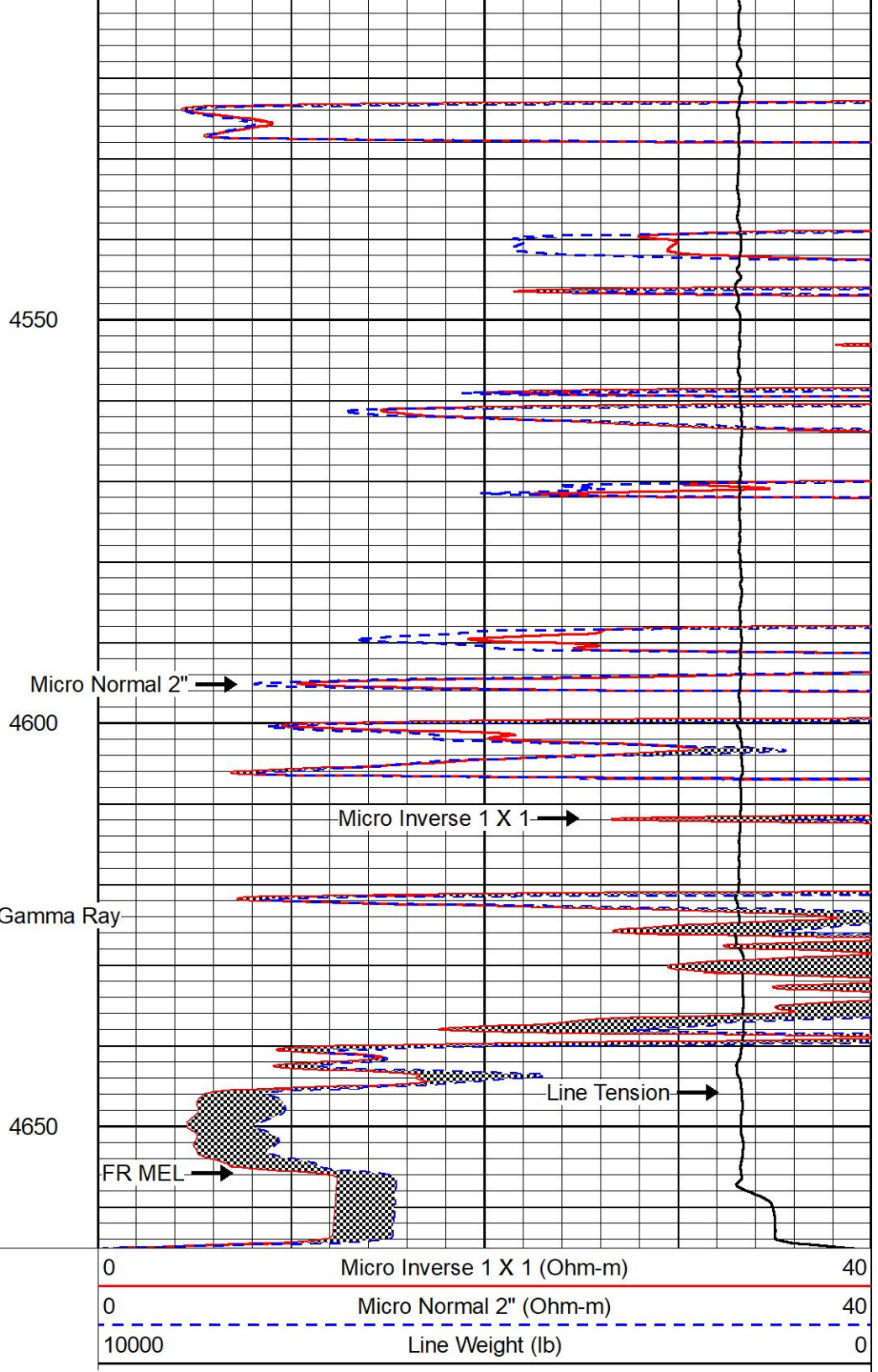
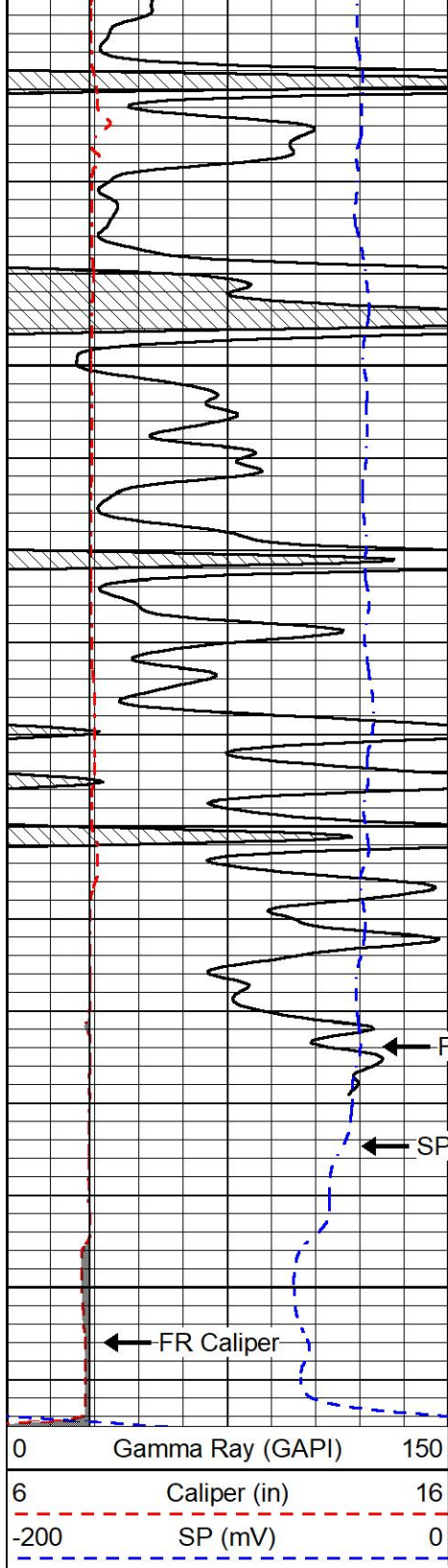
4350

4400

4450

4500

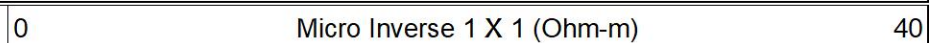




REPEAT SECTION

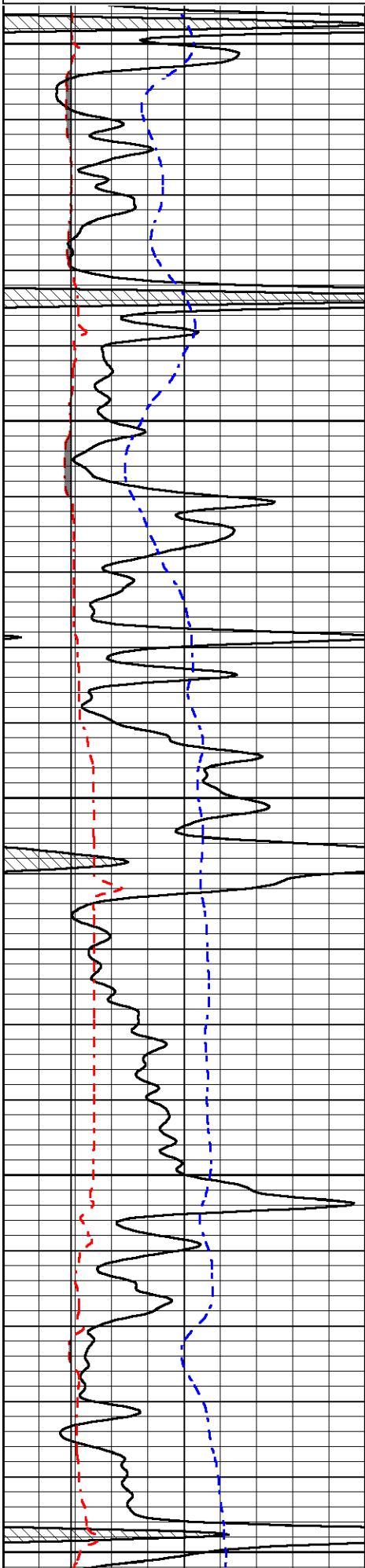
REPEAT PASS

Database File talon_roger 1-19.db
 Dataset Pathname stack/pass2.1
 Presentation Format _micro
 Dataset Creation Thu Nov 04 05:46:14 2021
 Charted by Depth in Feet scaled 1:240



6	Caliper (in)	16
-200	SP (mV)	0

0	Micro Normal 2" (Ohm-m)	40
10000	Line Weight (lb)	0



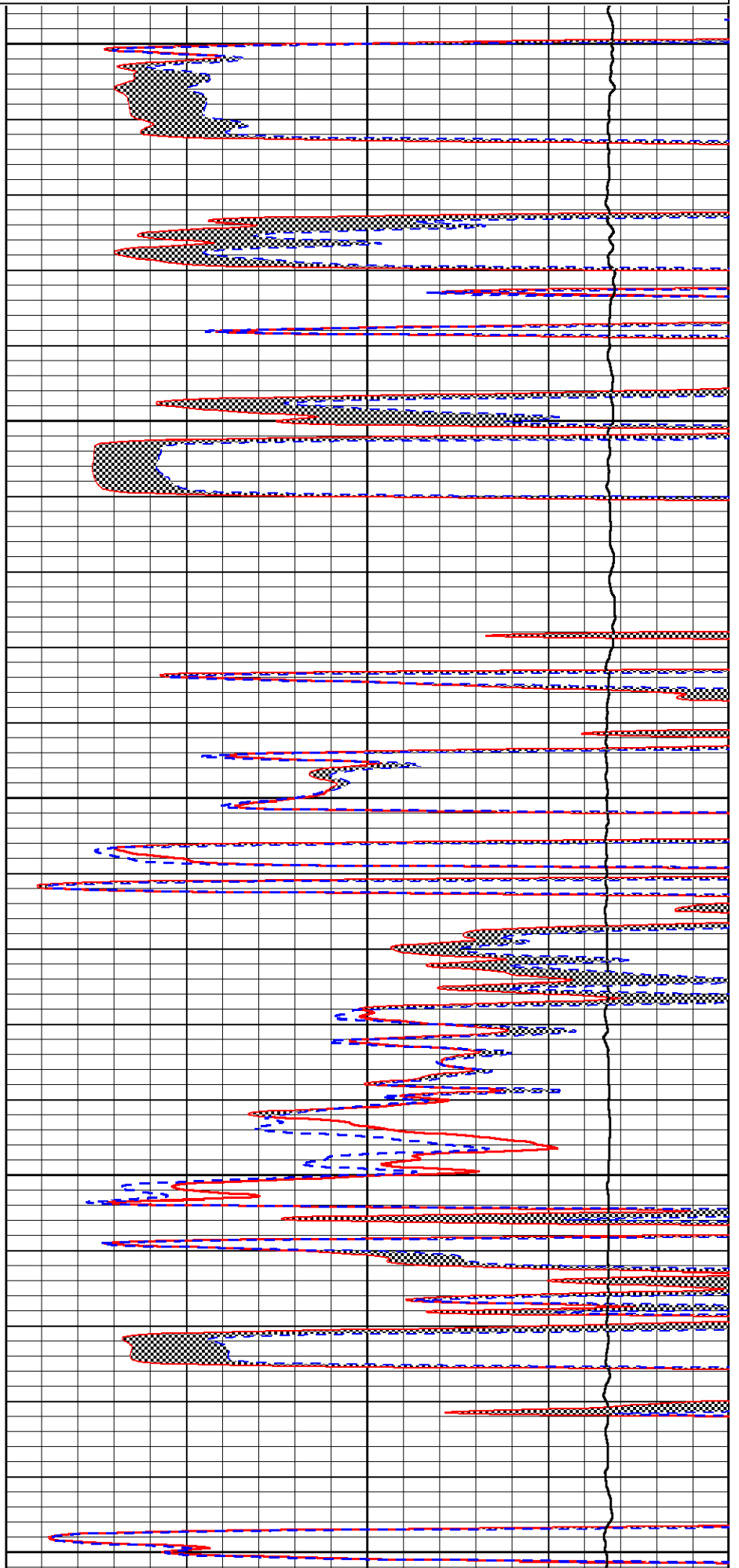
4300

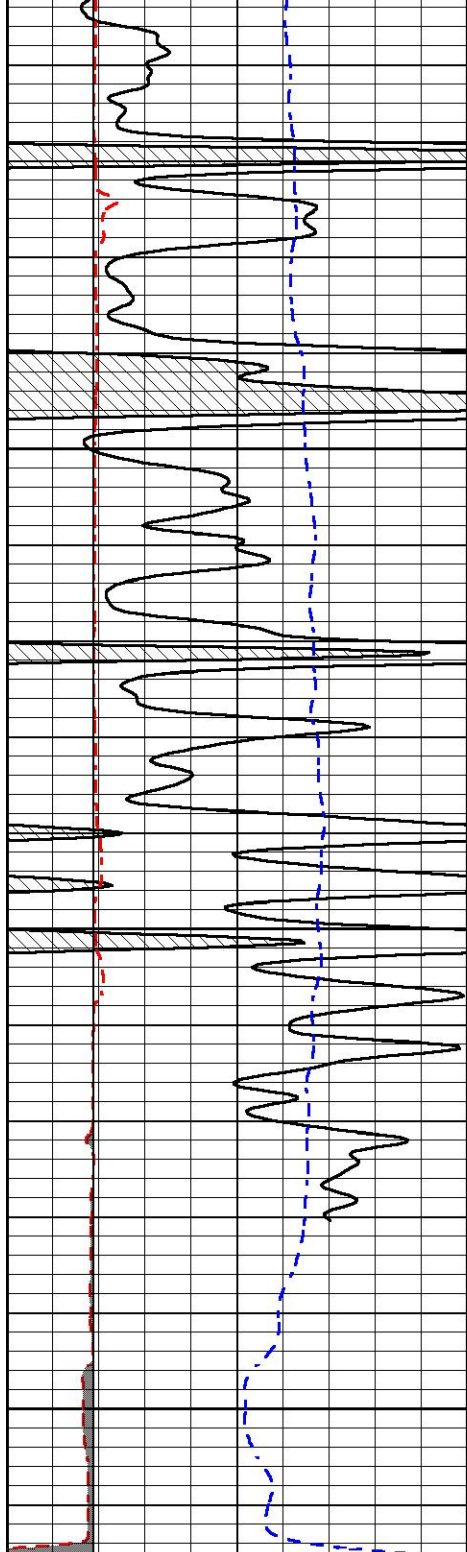
4350

4400

4450

4500



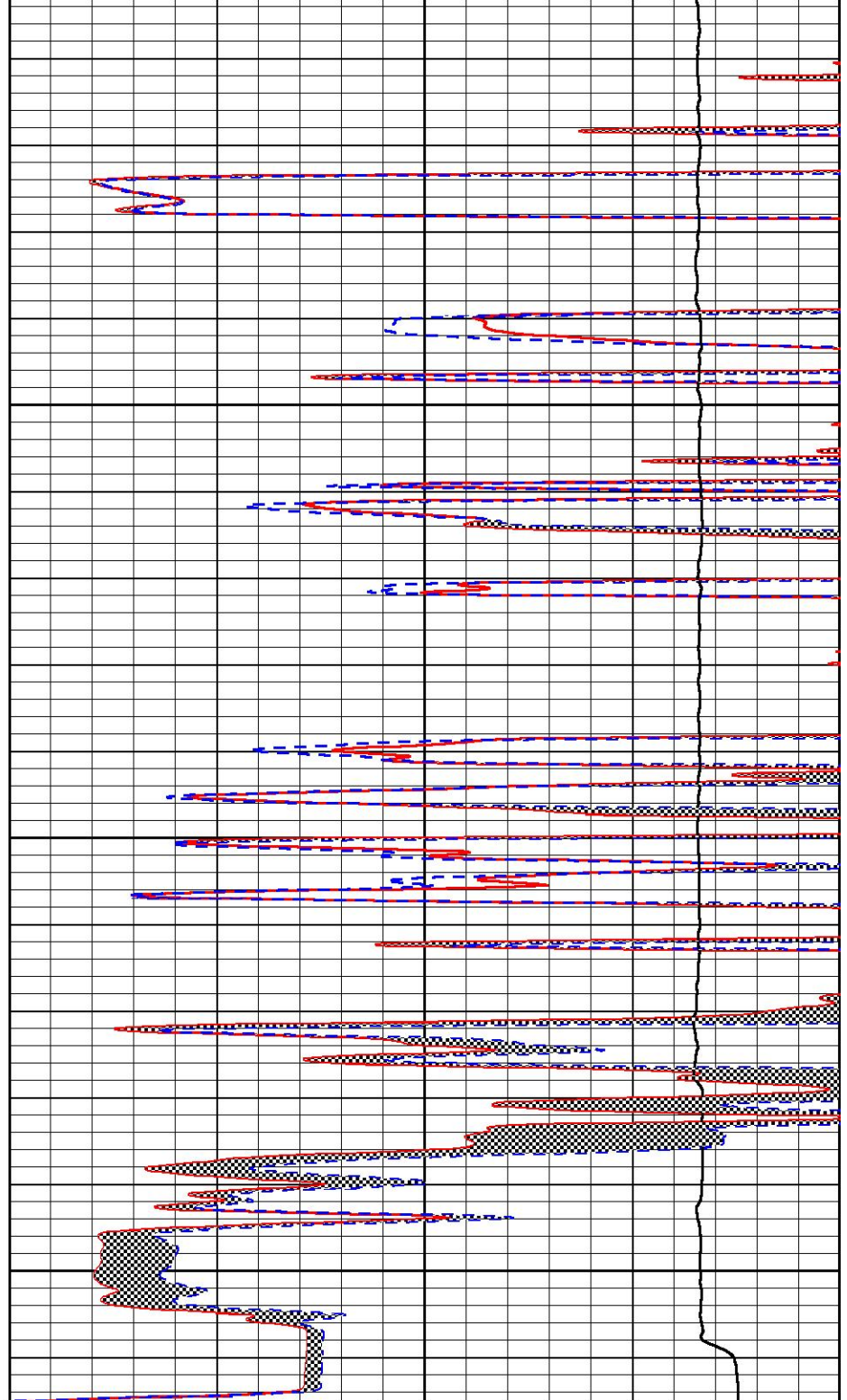


4550

4600

4650

0	Gamma Ray (GAPI)	150
6	Caliper (in)	16
-200	SP (mV)	0



0	Micro Inverse 1 X 1 (Ohm-m)	40
0	Micro Normal 2" (Ohm-m)	40
10000	Line Weight (lb)	0



Company Talon Group, LLC
 Well Roger 1-19
 Field Hiney
 County Lane
 State Kansas